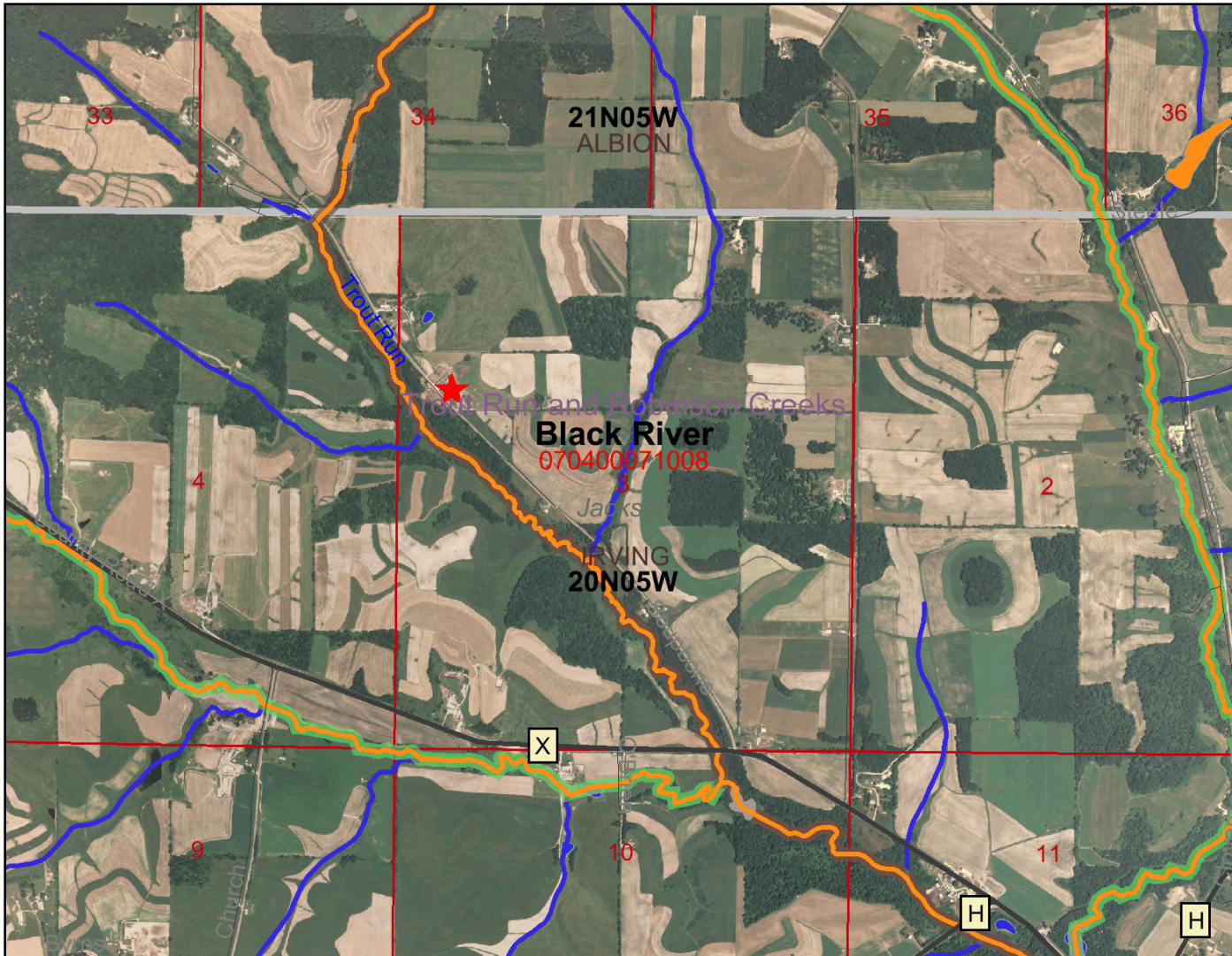


# Jackson Cnty\_Sampson Farm Barnyard Runoff Control\_Nov 12, 2008



## Legend

- Railroads
- Local Roads
- Major Highways
- Interstate
- State Highway
- U.S. Highways
- County Roads
- NR104 Lines
- Outstanding and Exceptional Waters
- Exceptional
- Outstanding
- PRF Sensitive Areas of Lakes
- ASNRI Outstanding and Exceptional Streams
- ERW
- ORW
- ERW
- ASNRI Outstanding and Exceptional Lakes
- ERW
- ORW
- ORW
- ASNRI Wild and Scenic Rivers
- ASNRI Trout Streams
- Class I Trout
- Class II Trout
- Class III Trout
- ASNRI Wild Rice Streams
- ASNRI Wild Rice Areas

0 2250 4500 6750 ft.



Scale: 1:23,728

This map is a user generated static output from an Internet mapping site and is for general reference only. Data layers that appear on this map may or may not be accurate, current, or otherwise reliable. THIS MAP IS NOT TO BE USED FOR NAVIGATION.