



Excellence through experience™

709 Gillette St., Ste 3, La Crosse, WI 54603 ♦ 1-800-552-2932 ♦ Fax (608) 781-8893 Email: rona@metcohq.com ♦ www.metcohq.com

August 15, 2018

BRRTS #: 03-27-109550

PECFA #: 54466-9102-99

Matthew Vitale
Wisconsin Department of Natural Resources
1300 W Clairemont Avenue
Eau Claire, WI 54701

Subject: Rymenam's Property – Groundwater Monitoring Report

Dear Mr. Vitale,

Enclosed is the report for the Rymenam's Property site located in Pittsville, Wisconsin. **This completes the Public Bidding Deferred workscope approved on January 20, 2017.**

Groundwater Monitoring Workscope

On December 28, 2017, METCO collected groundwater samples from six monitoring wells (MW-1R, MW-2, MW-3, MW-4, MW-5 and MW-1 Club 54) two piezometers (BPP AP-1 and PZ-1 Club 54) and one private well (W199 STH 54 PW) for Dissolved Lead, PVOC, and Naphthalene analysis. Field measurements for water level, Dissolved Oxygen, pH, ORP, specific conductance, and temperature were collected from the sampled monitoring wells.

On March 21, 2018, METCO collected groundwater samples from six monitoring wells (MW-1R, MW-2, MW-3, MW-4, MW-5 and MW-1 Club 54), two piezometers (BPP AP-1 and Club 54 PZ-1), and one private well (W199 STH 54 PW) for Dissolved Lead, PVOC, and Naphthalene analysis. Field measurements for water level, Dissolved Oxygen, pH, ORP, specific conductance, and temperature were collected from the sampled monitoring wells. However, specific conductance could not be measured for monitoring wells Club 54 MW-1, MW-1R, and MW-3 due to equipment malfunction.

On June 14, 2018, METCO collected groundwater samples from six monitoring wells (MW-1R, MW-2, MW-3, MW-4, MW-5 and MW-1 Club 54) two piezometers (BPP AP-1 and Club 54 PZ-1) and one private well (W199 STH 54 PW) for Dissolved Lead, PVOC, and Naphthalene analysis. Field measurements for water level, Dissolved Oxygen, pH, ORP, specific conductance, and temperature were collected from the sampled monitoring wells.

Waste Disposal

On December 12, 2017, DKS Transport Services, LLC, of Menomonie, Wisconsin picked-up and disposed of one drum of soil cuttings at the Advanced Disposal Seven Mile Creek Landfill in Eau Claire, Wisconsin.

Groundwater Results

Monitoring Well MW-1R: Currently shows NR140 Enforcement Standard (ES) exceedances for Benzene (15.3 ppb), Naphthalene (154 ppb), and Trimethylbenzenes (2510 ppb) as well as NR140 Preventative Action Limit (PAL) exceedances for Dissolved Lead (5.4 ppb), Ethylbenzene (291 ppb), and Xylene (1348 ppb). Based on historic groundwater results, the contaminant concentrations appear to be stable to decreasing.

Monitoring Well MW-2: Currently shows an NR140 Preventative Action Limit (PAL) exceedance for Dissolved Lead (4.3 ppb) and no detects for PVOC's or Naphthalene.

Monitoring Well MW-3: Currently shows an NR140 Enforcement Standard (ES) exceedance for Benzene (11.2 ppb) as well as NR140 Preventative Action Limit (PAL) exceedances for Naphthalene (17.8 ppb) and Trimethylbenzenes (166.2 ppb). Based on historic groundwater results, the contaminant concentrations appear to be stable to decreasing.

Monitoring Well MW-4: Currently shows NR140 Preventative Action Limit (PAL) exceedances for Dissolved Lead (2.0 ppb) and Benzene (2.76 ppb).

Monitoring Well MW-5: Currently shows an NR140 Preventative Action Limit (PAL) exceedance for Benzene (2.76 ppb).

Monitoring Well MW-1 Club 54: Currently shows NR140 Preventative Action Limit (PAL) exceedances for Benzene (4.2 ppb), Ethylbenzene (141 ppb), Naphthalene (22.4 ppb), Trimethylbenzenes (198 ppb), and Xylene (406 ppb). Based on historic groundwater results, the contaminant concentrations appear to be stable to decreasing.

Piezometer PZ-1 Club 54: Currently shows no detects for all contaminants of concern.

Piezometer BPP-AP-1: Currently shows an NR140 Preventative Action Limit (PAL) exceedance for Benzene (2.47 ppb). Based on historic groundwater results, the contaminant concentrations appear to be stable to decreasing.

Private Well W199 State Hwy 54: Currently shows no detects for all contaminants of concern.

Conclusions/Recommendations

Based on current groundwater results, METCO recommends that the Rymenam's Property site be reviewed for the possibility of "closure" for the following reasons:

- 1) The extent and degree of petroleum contamination in soil and groundwater has been defined to a practical extent.
- 2) No Direct Contact exceedances remain following the June 2017 excavation project (93.43 tons).
- 3) Groundwater contamination trends appear to be at least stable to decreasing.
- 4) Risk of vapor intrusion appears unlikely as the soil or groundwater plume does not extend beneath any buildings and no groundwater samples exceed 1,000 ppb Benzene.
- 5) The onsite potable well has shown no laboratory detections.

If the state concurs, please contact METCO to discuss closure activities and costs.

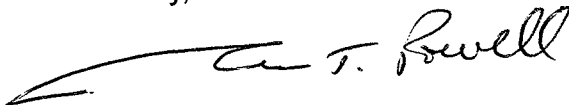
However, if the state determines that additional monitoring will be required prior to closure, please contact METCO to discuss.

Per WDNR response to this conclusion/recommendation METCO will proceed.

A Detailed Site Map, Groundwater Flow Maps (3), Groundwater Isoconcentration Map, Data Tables, Waste Disposal Documentation, and Laboratory Documents have been attached.

If you have any questions or comments please feel free to call (608-781-8879) or email at jasonp@metcohq.com.

Sincerely,



Jason T. Powell
Staff Scientist

Attachments

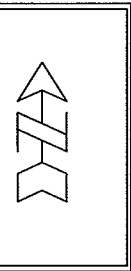
c: Kathy Brookhart – Client

DETAILED SITE MAP

RYMENAMS PROPERTY

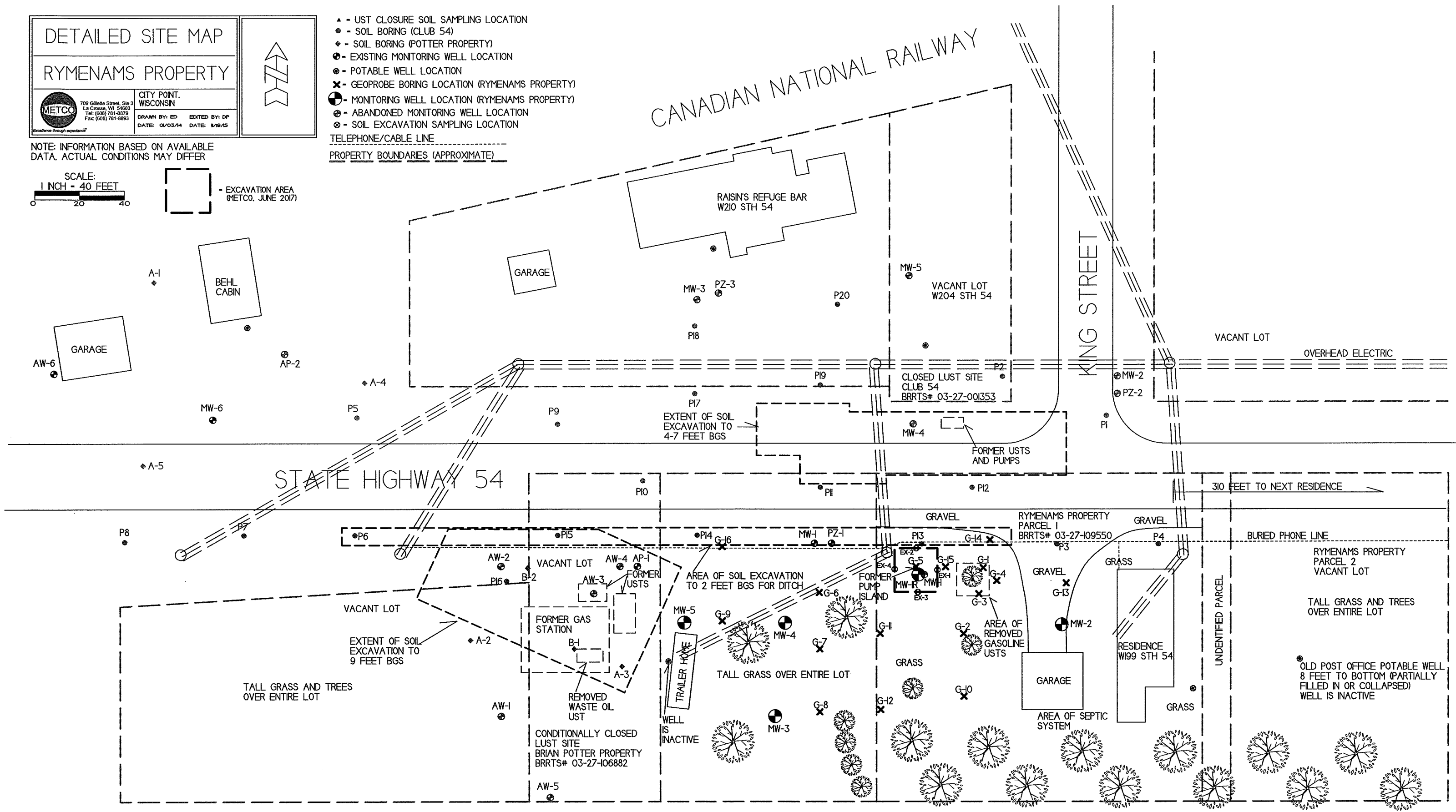
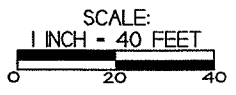
METCO
 709 Gillette Street, Ste 3
 La Crosse, WI 54603
 Tel: (608) 781-8879
 Fax: (608) 781-8883
Excellence through experience

CITY POINT, WISCONSIN
 DRAWN BY: ED EDITED BY: DP
 DATE: 01/03/14 DATE: 1/16/15




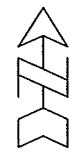
- ▲ - UST CLOSURE SOIL SAMPLING LOCATION
 - - SOIL BORING (CLUB 54)
 - ◆ - SOIL BORING (POTTER PROPERTY)
 - ⊕ - EXISTING MONITORING WELL LOCATION
 - ⊙ - POTABLE WELL LOCATION
 - ✕ - GEOPROBE BORING LOCATION (RYMENAMS PROPERTY)
 - ⊗ - MONITORING WELL LOCATION (RYMENAMS PROPERTY)
 - ⊖ - ABANDONED MONITORING WELL LOCATION
 - ⊗ - SOIL EXCAVATION SAMPLING LOCATION
- TELEPHONE/CABLE LINE
 - - - - - PROPERTY BOUNDARIES (APPROXIMATE)

NOTE: INFORMATION BASED ON AVAILABLE DATA. ACTUAL CONDITIONS MAY DIFFER



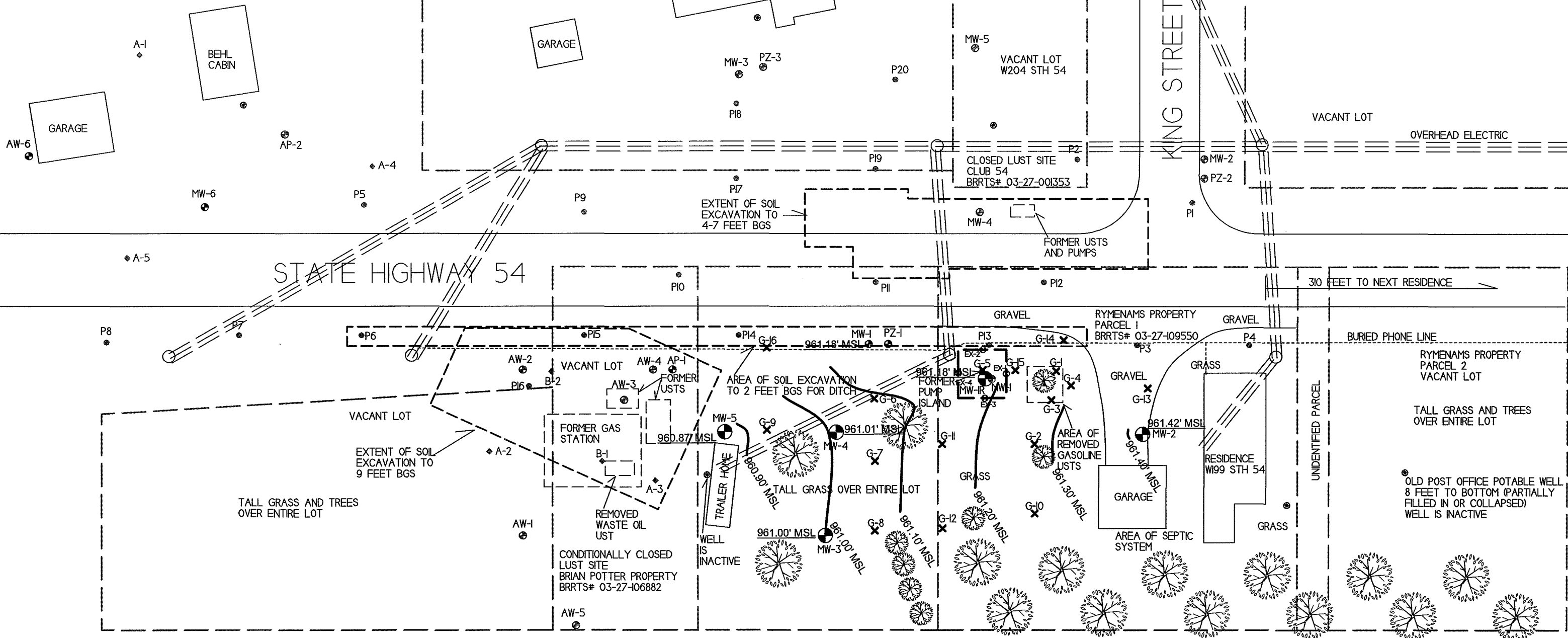
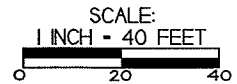
OLD POST OFFICE POTABLE WELL 8 FEET TO BOTTOM (PARTIALLY FILLED IN OR COLLAPSED) WELL IS INACTIVE

GROUNDWATER FLOW DIRECTION (12/28/2017)		
RYMENAMS PROPERTY		
 709 Gillette Street, Ste 3 La Crosse, WI 54603 Tel: (608) 781-8879 Fax: (608) 781-8883 Excellence through experience	CITY POINT, WISCONSIN	
	DRAWN BY: ED	EDITED BY: DP
	DATE: 01/03/14	DATE: 1/19/15



- ▲ - UST CLOSURE SOIL SAMPLING LOCATION
 - - SOIL BORING (CLUB 54)
 - ◆ - SOIL BORING (POTTER PROPERTY)
 - ⊕ - EXISTING MONITORING WELL LOCATION
 - ⊙ - POTABLE WELL LOCATION
 - ✕ - GEOPROBE BORING LOCATION (RYMENAMS PROPERTY)
 - ⊖ - MONITORING WELL LOCATION (RYMENAMS PROPERTY)
 - ⊕ - ABANDONED MONITORING WELL LOCATION
 - ⊗ - SOIL EXCAVATION SAMPLING LOCATION
- TELEPHONE/CABLE LINE
PROPERTY BOUNDARIES (APPROXIMATE)

NOTE: INFORMATION BASED ON AVAILABLE DATA. ACTUAL CONDITIONS MAY DIFFER



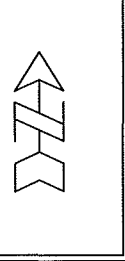
OLD POST OFFICE POTABLE WELL
8 FEET TO BOTTOM (PARTIALLY
FILLED IN OR COLLAPSED)
WELL IS INACTIVE

GROUNDWATER FLOW DIRECTION (3/21/2018)

RYMENAMS PROPERTY

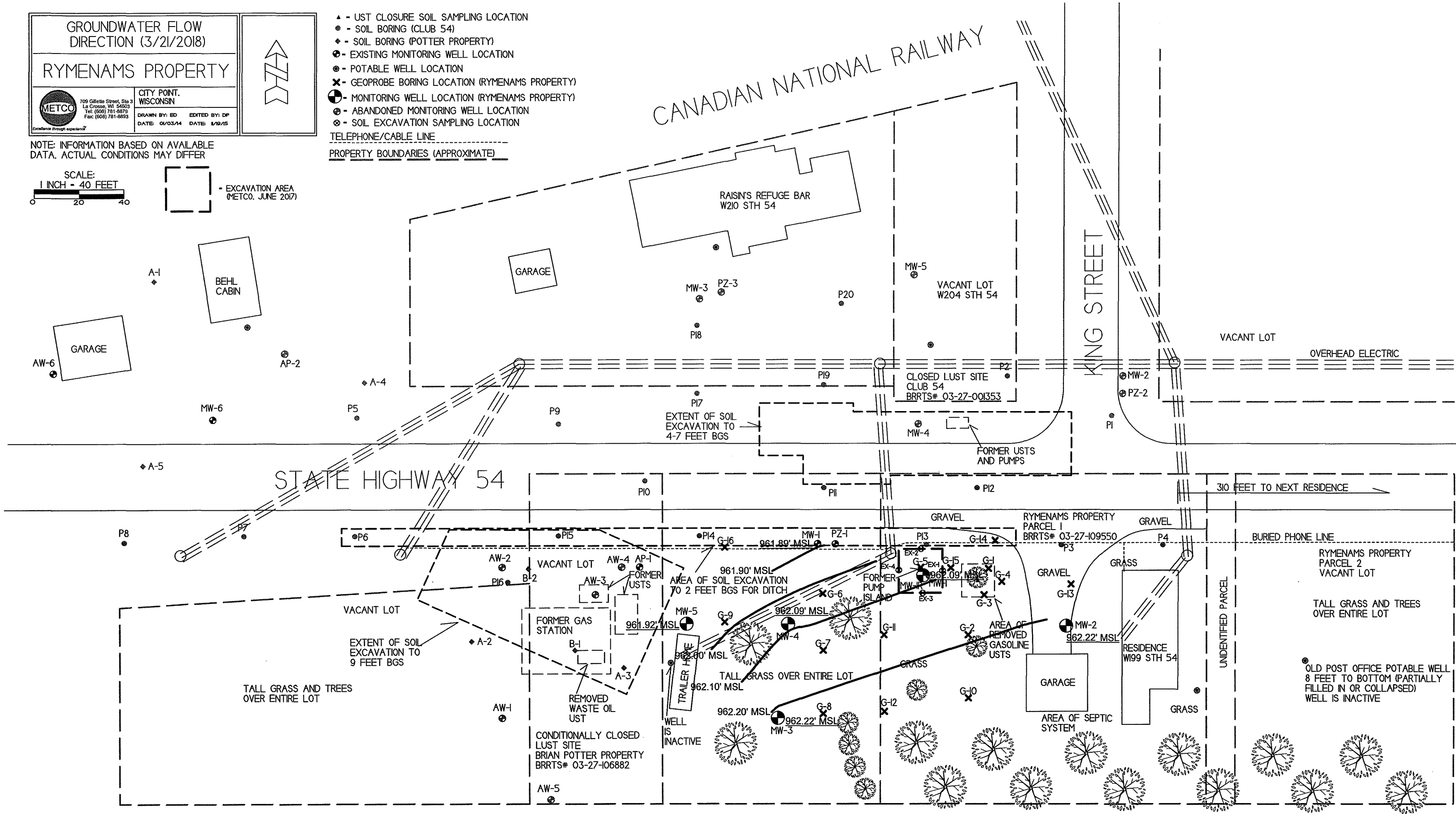
METCO
709 Gillette Street, Ste 3
La Crosse, WI 54603
Tel: (608) 781-8879
Fax: (608) 781-8893


CITY POINT, WISCONSIN
DRAWN BY: ED EDITED BY: DP
DATE: 01/03/14 DATE: 1/29/15

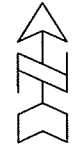


- ▲ - UST CLOSURE SOIL SAMPLING LOCATION
 - - SOIL BORING (CLUB 54)
 - ◆ - SOIL BORING (POTTER PROPERTY)
 - ⊕ - EXISTING MONITORING WELL LOCATION
 - ⊙ - POTABLE WELL LOCATION
 - ✕ - GEOPROBE BORING LOCATION (RYMENAMS PROPERTY)
 - ⊖ - MONITORING WELL LOCATION (RYMENAMS PROPERTY)
 - ⊕ - ABANDONED MONITORING WELL LOCATION
 - ⊗ - SOIL EXCAVATION SAMPLING LOCATION
- TELEPHONE/CABLE LINE
- - - PROPERTY BOUNDARIES (APPROXIMATE)

NOTE: INFORMATION BASED ON AVAILABLE DATA. ACTUAL CONDITIONS MAY DIFFER

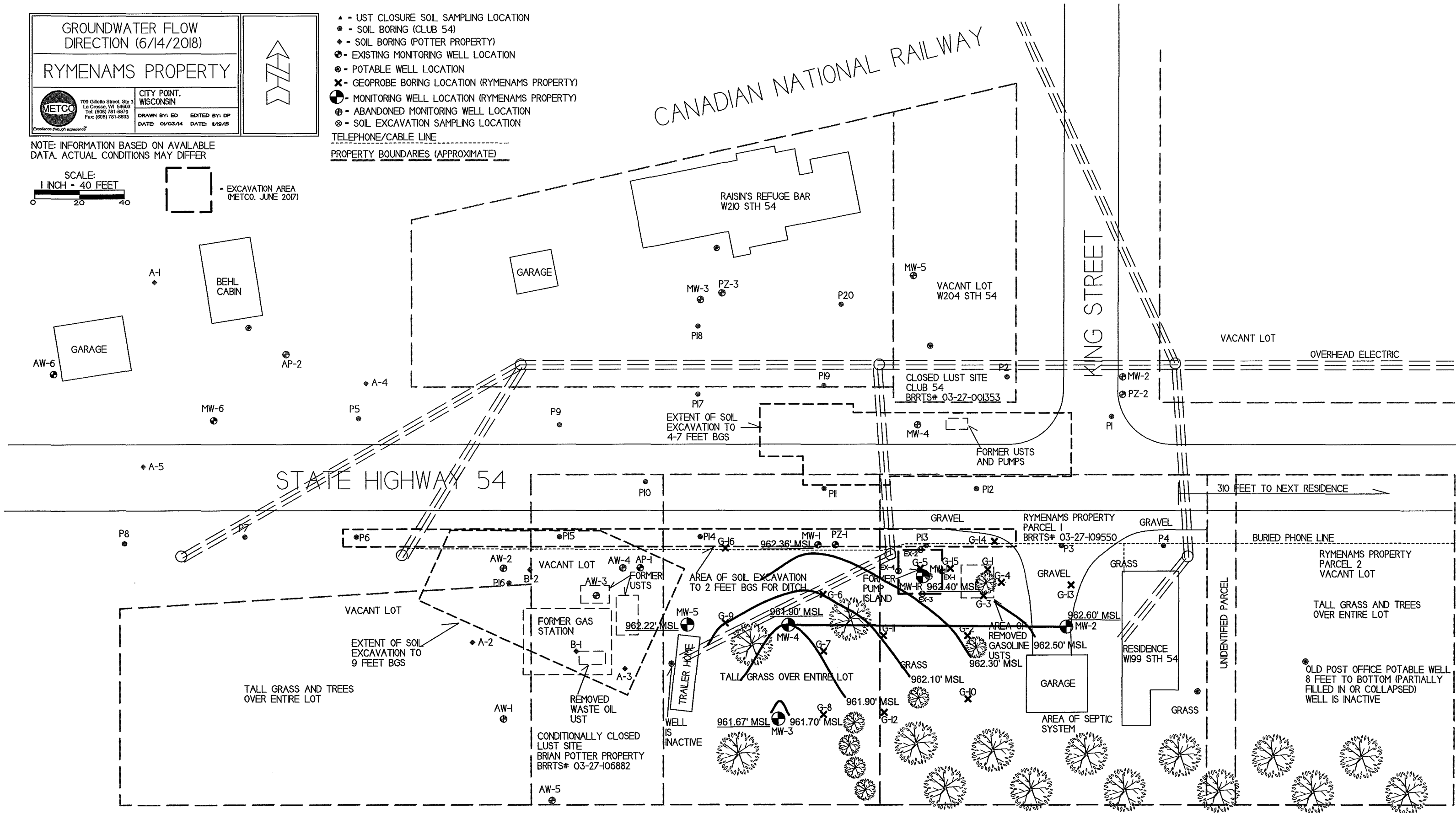


GROUNDWATER FLOW DIRECTION (6/14/2018)	
RYMENAMS PROPERTY	
 709 Gillette Street, Ste 3 La Crosse, WI 54603 Tel: (608) 781-8879 Fax: (608) 781-8853 Excellence through experience	CITY POINT, WISCONSIN
	DRAWN BY: ED EDITED BY: DP DATE: 01/03/14 DATE: 1/19/15



- ▲ - UST CLOSURE SOIL SAMPLING LOCATION
 - - SOIL BORING (CLUB 54)
 - ◆ - SOIL BORING (POTTER PROPERTY)
 - ⊙ - EXISTING MONITORING WELL LOCATION
 - ⊕ - POTABLE WELL LOCATION
 - ✕ - GEOPROBE BORING LOCATION (RYMENAMS PROPERTY)
 - ⊙ - MONITORING WELL LOCATION (RYMENAMS PROPERTY)
 - ⊕ - ABANDONED MONITORING WELL LOCATION
 - ⊙ - SOIL EXCAVATION SAMPLING LOCATION
- TELEPHONE/CABLE LINE
 - - - - - PROPERTY BOUNDARIES (APPROXIMATE)

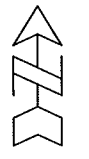
NOTE: INFORMATION BASED ON AVAILABLE DATA. ACTUAL CONDITIONS MAY DIFFER



GROUNDWATER ISOCONCENTRATION (6-14-18)
RYMENAMS PROPERTY

METCO 709 Gillette Street, Ste 3
 La Crosse, WI 54603
 Tel: (608) 781-8879
 Fax: (608) 781-8883

CITY POINT, WISCONSIN
 DRAWN BY: ED EDITED BY: DP
 DATE: 01/03/14 DATE: 1/19/15



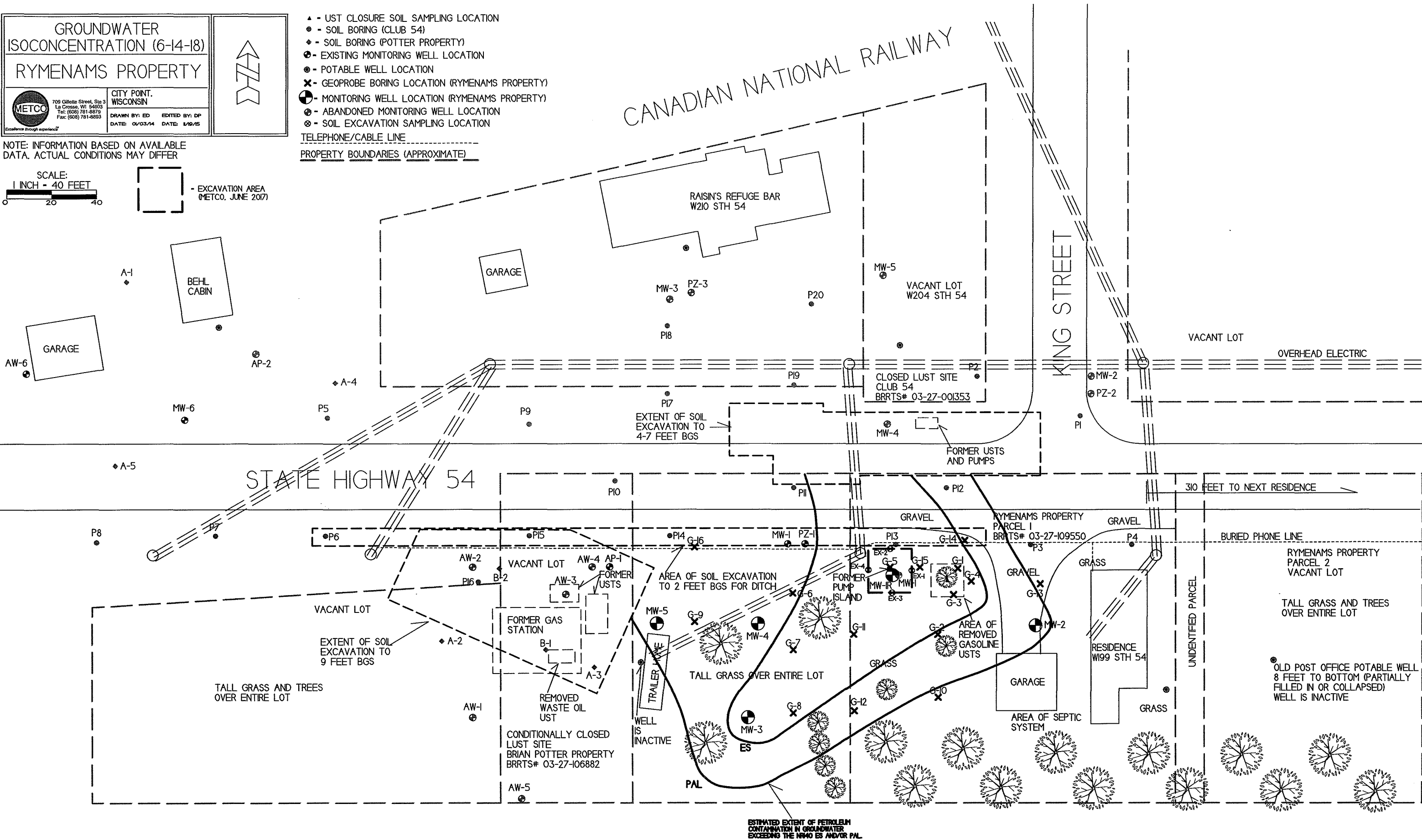
NOTE: INFORMATION BASED ON AVAILABLE DATA. ACTUAL CONDITIONS MAY DIFFER

SCALE:
 1 INCH = 40 FEET

EXCAVATION AREA
 (METCO, JUNE 2017)

- ▲ - UST CLOSURE SOIL SAMPLING LOCATION
- - SOIL BORING (CLUB 54)
- ◆ - SOIL BORING (POTTER PROPERTY)
- ⊙ - EXISTING MONITORING WELL LOCATION
- ⊖ - POTABLE WELL LOCATION
- ✕ - GEOPROBE BORING LOCATION (RYMENAMS PROPERTY)
- ⊕ - MONITORING WELL LOCATION (RYMENAMS PROPERTY)
- ⊖ - ABANDONED MONITORING WELL LOCATION
- ⊗ - SOIL EXCAVATION SAMPLING LOCATION

TELEPHONE/CABLE LINE
 PROPERTY BOUNDARIES (APPROXIMATE)



ESTIMATED EXTENT OF PETROLEUM CONTAMINATION IN GROUNDWATER EXCEEDING THE M40 ES AND/OR PAL

A.1 Groundwater Analytical Table
Rymenams Property BRRS# 03-27-109550

Well MW-1/1R MW-1R 964.22
PVC Elevation = MW-1 964.16 (feet) (MSL)

Date	Water Elevation (in feet msl)	Depth to Water (in feet)	Lead (ppb)	Benzene (ppb)	Ethyl Benzene (ppb)	MTBE (ppb)	Naphthalene (ppb)	Toluene (ppb)	Trimethylbenzenes (ppb)	Xylene (Total) (ppb)
11/03/15	962.14	2.02	28.7	<22	1340	<55	289	850	3140	8810
02/03/16	962.93	1.23	45.3	<9.2	2300	<9.8	245	1670	2680	13300
06/26/17	MW-1 ABANDONED AND REMOVED DURING EXCAVATION PROJECT									
08/29/17	MW-1 REPLACED WITH MW-1R									
09/27/17	960.79	3.43	1.3	<13.5	225	<21.5	<85	220	1600	1100
12/28/17	961.18	3.04	3.4	<11	320	<28.5	99	194	2200	1490
03/21/18	962.09	2.13	1.6	3.0	304	<2.8	56	29.7	1470	926
06/14/18	962.40	1.82	5.4	15.3	297	<28.5	154	34	2510	1348
ENFORCEMENT STANDARD ES =			15	5	700	60	100	800	480	2000
PREVENTIVE ACTION LIMIT PAL =			1.5	0.5	140	12	10	160	96	400

(ppb) = parts per billion
 ns = not sampled nm = not measured

Well MW-2
PVC Elevation = 965.15 (feet) (MSL)

Date	Water Elevation (in feet msl)	Depth to Water (in feet)	Lead (ppb)	Benzene (ppb)	Ethyl Benzene (ppb)	MTBE (ppb)	Naphthalene (ppb)	Toluene (ppb)	Trimethylbenzenes (ppb)	Xylene (Total) (ppb)
11/03/15	962.44	2.71	1.4	<0.44	<0.71	<1.1	<1.6	<0.44	<3.1	<3.1
02/03/16	963.00	2.15	<0.7	<0.46	<0.73	<0.49	<2.6	<0.39	<1.51	<2.06
09/27/17	960.93	4.22	1.5	<0.27	<0.56	<0.43	<1.7	<0.33	<1.14	<1.71
12/28/17	961.42	3.73	4.7	<0.22	<0.53	<0.57	<1.7	<0.45	<1.48	<1.58
03/21/18	962.22	2.93	<0.9	<0.22	<0.26	<0.28	<2.1	<0.19	<1.43	<0.72
06/14/18	962.60	2.55	4.3	<0.22	<0.53	<0.57	<1.7	<0.45	<1.48	<1.58
ENFORCEMENT STANDARD ES =			15	5	700	60	100	800	480	2000
PREVENTIVE ACTION LIMIT PAL =			1.5	0.5	140	12	10	160	96	400

(ppb) = parts per billion
 ns = not sampled nm = not measured

Well MW-3
PVC Elevation = 963.28 (feet) (MSL)

Date	Water Elevation (in feet msl)	Depth to Water (in feet)	Lead (ppb)	Benzene (ppb)	Ethyl Benzene (ppb)	MTBE (ppb)	Naphthalene (ppb)	Toluene (ppb)	Trimethylbenzenes (ppb)	Xylene (Total) (ppb)
11/03/15	962.03	1.25	<0.7	<0.44	<0.71	<1.1	<1.6	<0.44	<3.1	<3.1
02/03/16	962.75	0.53	0.8	1.4	6.8	<0.49	<2.6	<0.39	8.0-8.83	2.36
09/27/17	960.01	3.27	<0.9	47	119	<4.3	57	15.7	594	679
12/28/17	961.00	2.28	1.9	5.8	57	<5.7	<17	8.7	139.4	129
03/21/18	962.22	1.06	<0.9	1.22	18	<0.57	4.1	2.68	114.2	39.4
06/14/18	961.67	1.61	<0.9	11.2	25.3	<0.57	17.8	2.86	166.2	112.5
ENFORCEMENT STANDARD ES =			15	5	700	60	100	800	480	2000
PREVENTIVE ACTION LIMIT PAL =			1.5	0.5	140	12	10	160	96	400

(ppb) = parts per billion
 ns = not sampled nm = not measured

A.1 Groundwater Analytical Table
Rymenams Property BRRS# 03-27-109550

Well MW-4

PVC Elevation = 964.15 (feet) (MSL)

Date	Water Elevation (in feet msl)	Depth to Water (in feet)	Lead (ppb)	Benzene (ppb)	Ethyl Benzene (ppb)	MTBE (ppb)	Naphthalene (ppb)	Toluene (ppb)	Trimethylbenzenes (ppb)	Xylene (Total) (ppb)
11/03/15	962.09	2.06	2.5	7	86	<11	34	7.3	226	366
02/03/16	963.04	1.11	7.9	0.64	22.2	<0.49	5.7	0.55	55.5	34.8
09/27/17	960.24	3.91	3.0	4.7	68	<2.15	14.6	12.8	255.1	272
12/28/17	961.01	3.14	7.0	<1.1	10.8	<2.85	<8.5	2.55	36.2	36.6
03/21/18	962.09	2.06	0.9	3.5	127	<0.28	14.2	17.4	191	392
06/14/18	961.90	2.25	2.0	2.27	39	<0.57	9.5	8.7	74.7	122
ENFORCEMENT STANDARD ES =			15	5	700	60	100	800	480	2000
PREVENTIVE ACTION LIMIT PAL =			1.5	0.5	140	12	10	160	96	400

(ppb) = parts per billion
 ns = not sampled nm = not measured

Well MW-5

PVC Elevation = 964.34 (feet) (MSL)

Date	Water Elevation (in feet msl)	Depth to Water (in feet)	Lead (ppb)	Benzene (ppb)	Ethyl Benzene (ppb)	MTBE (ppb)	Naphthalene (ppb)	Toluene (ppb)	Trimethylbenzenes (ppb)	Xylene (Total) (ppb)
11/03/15	961.90	2.44	<0.7	1.27	<0.71	<1.1	<1.6	<0.44	<3.1	<3.1
02/03/16	962.08	2.26	1.4	<0.46	<0.73	<0.49	<2.6	<0.39	<1.51	<2.06
09/27/17	960.19	4.15	<0.9	<0.27	<0.56	<0.43	<1.7	<0.33	<1.14	<1.71
12/28/17	960.87	3.47	<0.9	<0.22	<0.53	<0.57	<1.7	<0.45	<1.48	<1.58
03/21/18	961.92	2.42	<0.9	<0.22	<0.26	<0.28	<2.1	<0.19	<1.43	<0.72
06/14/18	962.22	2.12	<0.9	2.76	1.46	<0.57	2.67	0.84	21.94	8.94
ENFORCEMENT STANDARD ES =			15	5	700	60	100	800	480	2000
PREVENTIVE ACTION LIMIT PAL =			1.5	0.5	140	12	10	160	96	400

(ppb) = parts per billion
 ns = not sampled nm = not measured

MW-1 Club 54

PVC Elevation = 964.21 (feet) (MSL)

Date	Water Elevation (in feet msl)	Depth to Water (in feet)	GRO (ppb)	Lead (ppb)	Benzene (ppb)	Ethyl Benzene (ppb)	MTBE (ppb)	Naphthalene (ppb)	Toluene (ppb)	Trimethylbenzenes (ppb)	Xylene (Total) (ppb)	Other PVOC's (ppb)
05/15/97	NM	NM	10400	<5.7	286	611	<9	113	2960	658	2522	<15 1,2-DCA
09/17/97	NM	NM	21800	NS	1080	1390	<18	108	7900	1235	6310	NS
01/08/98	NM	NM	29500	NS	1020	1340	<18	215	7500	1505	7440	NS
05/12/98	NM	NM	20100	NS	300	1330	<8.8	208	3650	1505	4755	NS
12/31/03	NM	NM	4200	0.82	72	390	6.3	NS	490	377	1030	NS
07/25/14	961.83	2.38	NS	NS	7.8	90	<2.3	<17	49	108.2	204	NS
11/03/15	962.02	2.19	NS	1.2	2.71	34	<1.1	6.1	10.5	68.9	82.5	NS
02/03/16	962.78	1.43	NS	0.9	14	205	<0.49	22	21.5	270	677	NS
09/27/17	960.63	3.58	NS	1.1	15.1	320	<4.3	41	137	305	861	NS
12/28/17	961.18	3.03	NS	1.2	<2.2	31.1	<5.7	<17	<4.5	36-39.5	38.1	NS
03/21/18	961.89	2.32	NS	0.9	0.72	5.9	<0.57	<1.7	0.45	11.15	13.7	NS
06/14/18	962.36	1.85	NS	<0.9	4.2	141	<0.57	22.4	29.5	198	406	NS
ENFORCEMENT STANDARD ES =			-	15	5	700	60	100	800	480	2000	
PREVENTIVE ACTION LIMIT PAL =			-	1.5	0.5	140	12	10	160	96	400	

(ppb) = parts per billion
 ns = not sampled nm = not measured

A.1 Groundwater Analytical Table
Rymenams Property BRRTS# 03-27-109550

Well PZ-1 Club 54
PVC Elevation =

964.01 (feet) (MSL)

Date	Water Elevation (in feet msl)	Depth to Water (in feet)	GRO (ppb)	Lead (ppb)	Benzene (ppb)	Ethyl Benzene (ppb)	MTBE (ppb)	Naphthalene (ppb)	Toluene (ppb)	Trimethylbenzenes (ppb)	Xylene (Total) (ppb)
05/01/01	NM	NM	53	NS	5.1	<0.40	<0.40	NS	<0.40	<0.80	<1.1
12/31/03	NM	NM	<50	<0.096	3.7	<0.60	<0.58	NS	<0.58	<1.18	<1.84
07/25/14	959.35	4.66	NS	NS	<0.24	<0.27	<0.26	<0.49	<0.24	<0.57	<0.94
11/03/15	959.27	4.74	NS	0.8	<0.44	<0.71	<1.1	<1.6	<0.44	<3.1	<3.1
02/03/16	959.92	4.09	NS	0.7	<0.46	<0.73	<0.49	<2.6	<0.39	<1.51	<2.06
09/27/17	958.33	5.68	NS	<0.9	<0.27	<0.56	<0.43	<1.7	<0.33	<1.14	<1.71
12/28/17	958.72	5.29	NS	<0.9	<0.22	<0.53	<0.57	<1.7	<0.45	<1.48	<1.58
03/21/18	958.99	5.02	NS	<0.9	<0.22	<0.26	0.28	<2.1	<0.19	<1.43	<0.72
06/14/18	959.69	4.32	NS	<0.9	<0.22	<0.53	<0.57	<1.7	<0.45	<1.48	<1.58
ENFORCEMENT STANDARD ES =			-	15	5	700	60	100	800	480	2000
PREVENTIVE ACTION LIMIT PAL =			-	1.5	0.5	140	12	10	160	96	400

(ppb) = parts per billion

ns = not sampled

nm = not measured

Well BPP-AP-1

PVC Elevation =

966.89 (feet) (MSL)

Date	Water Elevation (in feet msl)	Depth to Water (in feet)	GRO (ppb)	Lead (ppb)	Benzene (ppb)	Ethyl Benzene (ppb)	MTBE (ppb)	Naphthalene (ppb)	Toluene (ppb)	Trimethylbenzenes (ppb)	Xylene (Total) (ppb)	Other PVOC's (ppb)
09/17/97	NM	NM	130	NS	37	5.4	<0.20	2.2	2.7	10.3	24	3.3 1,2-DCA
07/28/00	NM	NM	150	NS	42	17	1.1	NS	0.68	<1.0	2.3	NS
10/27/00	NM	NM	120	NS	28	9	0.45	NS	0.51	<1.14	2	NS
01/22/01	NM	NM	120	NS	47	6.4	<0.40	NS	<0.40	<0.80	<1.1	NS
(Duplicate)	NM	NM	140	NS	44	6.7	<0.40	NS	<0.40	<0.80	<1.1	NS
05/01/01	NM	NM	140	NS	36	8.1	<0.40	NS	<0.40	<0.80	<1.1	NS
10/26/01	NM	NM	48	NS	26	1.1	<0.30	NS	0.31	0.35	<1.0	NS
04/06/06	NM	NM	<50	NS	14	<0.40	<0.36	NS	<0.36	<0.79	<1.10	NS
12/10/07	NM	NM	NS	NS	11	<0.40	<0.36	NS	<0.36	<0.79	<1.10	NS
07/14/08	NM	NM	NS	NS	9.2	<0.40	<0.36	NS	<0.36	<0.79	<1.10	NS
11/20/08	NM	NM	NS	NS	5.8	<0.40	<0.36	NS	<0.36	<0.79	<1.10	NS
05/13/09	NM	NM	NS	NS	5.9	<0.40	<0.36	NS	<0.36	<0.79	<1.10	NS
11/03/09	NM	NM	NS	NS	3.5	<0.40	<0.36	NS	<0.36	<0.79	<1.10	NS
06/07/10	NM	NM	NS	NS	4.4	<0.41	<0.38	NS	<0.42	<0.83	<1.25	NS
12/10/10	NM	NM	NS	NS	5.7	<2.1	<1.9	NS	<2.1	<4.2	<6.3	NS
05/26/11	NM	NM	NS	NS	4.0	<0.41	<0.38	NS	<0.42	<0.83	<1.25	NS
11/07/11	NM	NM	NS	NS	2.4	<0.41	<0.38	NS	<0.42	<0.83	<1.25	NS
11/03/15	958.34	8.55	NS	<0.7	0.55	<0.71	<1.1	<1.6	<0.44	<3.1	<3.1	NS
02/03/16	958.84	8.05	NS	<0.7	2.14	<0.73	<0.49	<2.6	<0.39	<1.51	<2.06	NS
09/27/17	957.23	9.66	NS	<0.9	1.69	<0.56	<0.43	<1.7	<0.33	<1.14	<1.71	NS
12/28/17	957.68	9.21	NS	<0.9	2.81	<0.53	<0.57	<1.7	<0.45	<1.48	<1.58	NS
03/21/18	958.32	8.57	NS	<0.9	2.88	<0.26	<0.28	<2.1	<0.19	<1.43	NS	NS
06/14/18	958.51	8.38	NS	<0.9	2.47	<0.53	<0.57	<1.7	<0.45	<1.48	<1.58	NS
ENFORCEMENT STANDARD ES =			-	15	5	700	60	100	800	480	2000	
PREVENTIVE ACTION LIMIT PAL =			-	1.5	0.5	140	12	10	160	96	400	

(ppb) = parts per billion

ns = not sampled

nm = not measured

A.1 Groundwater Analytical Table
Rymenams Property BRRS# 03-27-109550

Old Post Office Well

Date	Water Elevation (in feet msl)	Depth to Water (in feet)	Lead (ppb)	Benzene (ppb)	Ethyl Benzene (ppb)	MTBE (ppb)	Naphthalene (ppb)	Toluene (ppb)	Trimethylbenzenes (ppb)	Xylene (Total) (ppb)
07/25/14	NM	NM	NS	<0.24	<0.55	<0.23	<1.7	<0.69	<3.6	<1.32
11/03/15	NOT SAMPLED									
02/03/16	NOT SAMPLED									
09/27/17	NOT SAMPLED									
12/28/17	NOT SAMPLED									
03/21/18	NOT SAMPLED									
06/14/18	NOT SAMPLED									
ENFORCEMENT STANDARD ES =			15	5	700	60	100	800	480	2000
PREVENTIVE ACTION LIMIT PAL =			1.5	0.5	140	12	10	160	96	400

(ppb) = parts per billion

ns = not sampled nm = not measured

W199 State Hwy 54

Date	Water Elevation (in feet msl)	Depth to Water (in feet)	Lead (ppb)	Benzene (ppb)	Ethyl Benzene (ppb)	MTBE (ppb)	Naphthalene (ppb)	Toluene (ppb)	Trimethylbenzenes (ppb)	Xylene (Total) (ppb)
07/24/14	NM	NM	NS	<0.24	<0.27	<0.26	<0.49	<0.24	<0.57	<0.94
11/03/15	NM	NM	NS	<0.44	<0.71	<1.1	<1.6	<0.44	<3.1	<3.1
02/03/16	NM	NM	<0.7	<0.46	<0.73	<0.49	<2.6	<0.39	<1.51	<2.06
09/27/17	NM	NM	COULD NOT SAMPLE							
12/28/17	NM	NM	<0.9	<0.22	<0.53	<0.57	<1.7	<0.45	<1.48	<1.58
03/21/18	NM	NM	<0.9	<0.22	<0.26	<0.28	<2.1	<0.19	<1.43	<0.72
06/14/18	NM	NM	<0.9	<0.22	<0.53	<0.57	<1.7	<0.45	<1.48	<1.58
ENFORCEMENT STANDARD ES =			15	5	700	60	100	800	480	2000
PREVENTIVE ACTION LIMIT PAL =			1.5	0.5	140	12	10	160	96	400

(ppb) = parts per billion

ns = not sampled nm = not measured

A.6 Water Level Elevations
Rymenams Property BRRTS# 03-27-109550
City Point, Wisconsin

	MW-1	MW-1R	MW-2	MW-3	MW-4	MW-5	PZ-1	BPP-AP-1	MW-1 Club 54
Ground Surface (feet msl)	964.46	964.48	965.54	963.61	964.37	964.66	964.78	964.30	964.48
PVC top (feet msl)	964.16	964.22	965.15	963.28	964.15	964.34	964.01	966.89	964.21
Well Depth (feet)	7.00	7.00	7.00	7.00	7.00	7.00	17.50	20.00	7.00
Top of screen (feet msl)	962.46	962.48	963.54	961.61	962.37	962.66	952.28	949.30	962.48
Bottom of screen (feet msl)	957.46	957.48	958.54	956.61	957.37	957.66	947.28	944.30	957.48

Depth to Water From Top of PVC (feet)

07/24/14	NI	NI	NI	NI	NI	NI	4.66	NM	2.38
11/03/15	2.02	NI	2.71	1.25	2.06	2.44	4.74	8.55	2.19
02/03/16	1.23	NI	2.15	0.53	1.11	2.26	4.09	8.05	1.43
09/27/17	A	3.43	4.22	3.27	3.91	4.15	5.68	9.66	3.58
12/28/17	A	3.04	3.73	2.28	3.14	3.47	5.29	9.21	3.03
03/21/18	A	2.13	2.93	1.06	2.06	2.42	5.02	8.57	2.32
06/14/18	A	1.82	2.55	1.61	2.25	2.12	4.32	8.38	1.85

Depth to Water From Ground Surface (feet)

07/24/14	NI	NI	NI	NI	NI	NI	5.43	NM	2.65
11/03/15	2.32	NI	3.10	1.58	2.28	2.76	5.51	5.96	2.46
02/03/16	1.53	NI	2.54	0.86	1.33	2.58	4.86	5.46	1.70
09/27/17	A	3.69	4.61	3.60	4.13	4.47	6.45	7.07	3.85
12/28/17	A	3.30	4.12	2.61	3.36	3.79	6.06	6.62	3.30
03/21/18	A	2.39	3.32	1.39	2.28	2.74	5.79	5.98	2.59
06/14/18	A	2.08	2.94	1.94	2.47	2.44	5.09	5.79	2.12

Groundwater Elevation (feet msl)

07/24/14	NI	NI	NI	NI	NI	NI	959.35	NM	961.83
11/03/15	962.14	NI	962.44	962.03	962.09	961.90	959.27	958.34	962.02
02/03/16	962.93	NI	963.00	962.75	963.04	962.08	959.92	958.84	962.78
09/27/17	A	960.79	960.93	960.01	960.24	960.19	958.33	957.23	960.63
12/28/17	A	961.18	961.42	961.00	961.01	960.87	958.72	957.68	961.18
03/21/18	A	962.09	962.22	962.22	962.09	961.92	958.99	958.32	961.89
06/14/18	A	962.40	962.60	961.67	961.90	962.22	959.69	958.51	962.36

CNL = Could Not Locate

A = Abandoned and removed during soil excavation project

NI = Not Installed

NM = Not Measured

A.7 Other
Groundwater NA Indicator Results
Rymenams Property BRRTS# 03-27-109550

Well MW-1/1R

Date	Dissolved Oxygen (ppm)	pH	ORP	Temp (C)	Specific Conductance	Nitrate + Nitrite (ppm)	Total Sulfate (ppm)	Dissolved Iron (ppm)	Manganese (ppb)
11/03/15	3.51	6.38	180	12.6	298	NS	NS	NS	NS
02/03/16	4.40	6.36	72	1.2	1001	0.195	9.64	17.6	889
06/26/17	MW-1 ABANDONED AND REMOVED DURING EXCAVATION PROJECT								
08/29/17	MW-1 REPLACED WITH MW-1R								
09/27/17	0.83	7.44	37	15.6	1897	NS	NS	NS	NS
12/28/17	1.30	7.25	7	7.2	1584	NS	NS	NS	NS
03/21/18	1.87	7.01	39	1.8	Not working	NS	NS	NS	NS
06/14/18	3.56	6.95	-207.4	18.3	498	NS	NS	NS	NS
ENFORCE MENT STANDARD = ES - Bold						10	-	-	300
PREVENTIVE ACTION LIMIT = <i>PAL - Italics</i>						2	-	-	60

(ppb) = parts per billion (ppm) = parts per million
 ns = not sampled nm = not measured
 Note: Elevations are presented in feet mean sea level (msl).

Well MW-1 CLUB 54

Date	Dissolved Oxygen (ppm)	pH	ORP	Temp (C)	Specific Conductance	Nitrate + Nitrite (ppm)	Total Sulfate (ppm)	Dissolved Iron (ppm)	Manganese (ppb)
11/03/15	4.16	7.1	133	12.3	247	NS	NS	NS	NS
02/03/16	3.68	6.94	139	2.9	879	0.249	7.53	1.6	150
09/27/17	1.06	7.33	14	15.4	386	NS	NS	NS	NS
12/28/17	1.89	7.18	34	7.1	316	NS	NS	NS	NS
03/21/18	3.54	9.50	148	2.0	Not working	NS	NS	NS	NS
06/14/18	5.01	7.66	-29.4	14.98	441	NS	NS	NS	NS
ENFORCE MENT STANDARD = ES - Bold						10	-	-	300
PREVENTIVE ACTION LIMIT = <i>PAL - Italics</i>						2	-	-	60

(ppb) = parts per billion (ppm) = parts per million
 ns = not sampled nm = not measured
 Note: Elevations are presented in feet mean sea level (msl).

Well MW-2

Date	Dissolved Oxygen (ppm)	pH	ORP	Temp (C)	Specific Conductance	Nitrate + Nitrite (ppm)	Total Sulfate (ppm)	Dissolved Iron (ppm)	Manganese (ppb)
11/03/15	5.91	6.34	120	12.6	134	NS	NS	NS	NS
02/03/16	7.65	6.54	271	1.7	715	4.19	13.8	0.30	41.5
09/27/17	5.32	7.62	74	14.5	239	NS	NS	NS	NS
12/28/17	4.16	6.97	215	7.2	1023	NS	NS	NS	NS
03/21/18	4.30	6.55	128	2.2	237	NS	NS	NS	NS
06/14/18	5.43	7.53	-1.0	12.71	358	NS	NS	NS	NS
ENFORCE MENT STANDARD = ES - Bold						10	-	-	300
PREVENTIVE ACTION LIMIT = <i>PAL - Italics</i>						2	-	-	60

(ppb) = parts per billion (ppm) = parts per million
 ns = not sampled nm = not measured
 Note: Elevations are presented in feet mean sea level (msl).

A.7 Other
Groundwater NA Indicator Results
Rymenams Property BRRTS# 03-27-109550

Well MW-3

Date	Dissolved Oxygen (ppm)	pH	ORP	Temp (C)	Specific Conductance	Nitrate + Nitrite (ppm)	Total Sulfate (ppm)	Dissolved Iron (ppm)	Manganese (ppb)
11/03/15	5.66	6.43	141	11.9	423	NS	NS	NS	NS
02/03/16	4.02	6.36	121	2.7	624	<0.15	11.3	10.4	535
09/27/17	2.41	6.58	61	15.3	996	NS	NS	NS	NS
12/28/17	2.20	6.76	127	6.9	2116	NS	NS	NS	NS
03/21/18	2.40	6.94	70	2.0	Not working	NS	NS	NS	NS
06/14/18	4.57	7.76	-209.7	13.06	651	NS	NS	NS	NS
ENFORCE MENT STANDARD = ES - Bold						10	-	-	300
PREVENTIVE ACTION LIMIT = PAL - Italics						2	-	-	60

(ppb) = parts per billion (ppm) = parts per million
 ns = not sampled nm = not measured

Note: Elevations are presented in feet mean sea level (msl).

Well MW-4

Date	Dissolved Oxygen (ppm)	pH	ORP	Temp (C)	Specific Conductance	Nitrate + Nitrite (ppm)	Total Sulfate (ppm)	Dissolved Iron (ppm)	Manganese (ppb)
11/03/15	3.79	6.61	244	12.2	436	NS	NS	NS	NS
02/03/16	3.77	6.57	256	2.2	947	0.438	11.6	6.55	148
09/27/17	2.67	7.28	106	15.2	1231	NS	NS	NS	NS
12/28/17	2.58	6.62	116	7.0	610	NS	NS	NS	NS
03/21/18	4.60	6.99	120	2.2	769	NS	NS	NS	NS
06/14/18	5.71	7.90	37.8	13.05	615	NS	NS	NS	NS
ENFORCE MENT STANDARD = ES - Bold						10	-	-	300
PREVENTIVE ACTION LIMIT = PAL - Italics						2	-	-	60

(ppb) = parts per billion (ppm) = parts per million
 ns = not sampled nm = not measured

Note: Elevations are presented in feet mean sea level (msl).

Well MW-5

Date	Dissolved Oxygen (ppm)	pH	ORP	Temp (C)	Specific Conductance	Nitrate + Nitrite (ppm)	Total Sulfate (ppm)	Dissolved Iron (ppm)	Manganese (ppb)
11/03/15	4.22	6.64	129	11.8	499	NS	NS	NS	NS
02/03/16	3.59	6.54	162	2.2	372	<0.15	14.8	1.42	242
09/27/17	3.78	7.04	222	14.8	596	NS	NS	NS	NS
12/28/17	4.68	7.06	247	7.1	859	NS	NS	NS	NS
03/21/18	4.52	6.71	127	2.1	809	NS	NS	NS	NS
06/14/18	3.87	7.31	-31.4	11.75	1821	NS	NS	NS	NS
ENFORCE MENT STANDARD = ES - Bold						10	-	-	300
PREVENTIVE ACTION LIMIT = PAL - Italics						2	-	-	60

(ppb) = parts per billion (ppm) = parts per million
 ns = not sampled nm = not measured

Note: Elevations are presented in feet mean sea level (msl).

A.7 Other
Groundwater NA Indicator Results
Rymenams Property BRRTS# 03-27-109550

Well PZ-1 CLUB 54

Date	Dissolved Oxygen (ppm)	pH	ORP	Temp (C)	Specific Conductance	Nitrate + Nitrite (ppm)	Total Sulfate (ppm)	Dissolved Iron (ppm)	Manganese (ppb)
11/03/15	4.41	4.06	255	12.9	619	NS	NS	NS	NS
02/03/16	3.34	6.22	263	5.4	1002	0.360	19.1	0.25	284
09/27/17	3.29	6.76	211	14.3	846	NS	NS	NS	NS
12/28/17	5.21	6.88	229	7.4	1216	NS	NS	NS	NS
03/21/18	4.75	5.83	8	4.5	1138	NS	NS	NS	NS
06/14/18	5.01	7.66	-29.4	14.98	441	NS	NS	NS	NS
ENFORCE MENT STANDARD = ES - Bold						10	-	-	300
PREVENTIVE ACTION LIMIT = PAL - Italics						2	-	-	60

(ppb) = parts per billion (ppm) = parts per million
 ns = not sampled nm = not measured
 Note: Elevations are presented in feet mean sea level (msl).

Well BPP-AP-1

Date	Dissolved Oxygen (ppm)	pH	ORP	Temp (C)	Specific Conductance	Nitrate + Nitrite (ppm)	Total Sulfate (ppm)	Dissolved Iron (ppm)	Manganese (ppb)
11/03/15	5.54	5.14	185	12.9	399	NS	NS	NS	NS
02/03/16	2.30	5.47	71	5.2	850	0.325	16.2	28.1	528
09/27/17	2.83	7.17	188	13.5	613	NS	NS	NS	NS
12/28/17	3.63	7.21	162	7.9	1996	NS	NS	NS	NS
03/21/18	2.48	5.66	26	4.4	771	NS	NS	NS	NS
06/14/18	5.41	7.92	123.5	11.32	829	NS	NS	NS	NS
ENFORCE MENT STANDARD = ES - Bold						10	-	-	300
PREVENTIVE ACTION LIMIT = PAL - Italics						2	-	-	60

(ppb) = parts per billion (ppm) = parts per million
 ns = not sampled nm = not measured
 Note: Elevations are presented in feet mean sea level (msl).

Synergy Environmental Lab,

1990 Prospect Ct., Appleton, WI 54914 *P 920-830-2455 * F 920-733-0631

KATHY BROOKHART
KATHY BROOKHART
W199 STATE HWY 54
PITTSVILLE, WI 54466

Report Date 09-Jan-18

Project Name RYMENAM'S PROPERTY
Project #

Invoice # E34087

Lab Code 5034087A
Sample ID W199STH 54 PW
Sample Matrix Water
Sample Date 12/28/2017

	Result	Unit	LOD	LOQ	Dil	Method	Ext Date	Run Date	Analyst	Code
Inorganic										
Metals										
Lead, Dissolved	< 0.9	ug/L	0.9		3 1	7421		1/5/2018	CWT	1
Organic										
PVOC + Naphthalene										
Benzene	< 0.22	ug/l	0.22	0.69	1	GRO95/8021		1/2/2018	TCC	1
Ethylbenzene	< 0.53	ug/l	0.53	1.69	1	GRO95/8021		1/2/2018	TCC	1
Methyl tert-butyl ether (MTBE)	< 0.57	ug/l	0.57	1.82	1	GRO95/8021		1/2/2018	TCC	1
Naphthalene	< 1.7	ug/l	1.7	5.38	1	GRO95/8021		1/2/2018	TCC	1
Toluene	< 0.45	ug/l	0.45	1.45	1	GRO95/8021		1/2/2018	TCC	1
1,2,4-Trimethylbenzene	< 0.73	ug/l	0.73	2.33	1	GRO95/8021		1/2/2018	TCC	1
1,3,5-Trimethylbenzene	< 0.75	ug/l	0.75	2.39	1	GRO95/8021		1/2/2018	TCC	1
m&p-Xylene	< 1	ug/l	1	3.17	1	GRO95/8021		1/2/2018	TCC	1
o-Xylene	< 0.58	ug/l	0.58	1.84	1	GRO95/8021		1/2/2018	TCC	1

Project Name RYMENAM'S PROPERTY
 Project #

Invoice # E34087

Lab Code 5034087B
 Sample ID CLUB 54 PZ-1
 Sample Matrix Water
 Sample Date 12/28/2017

	Result	Unit	LOD	LOQ	Dil	Method	Ext Date	Run Date	Analyst	Code
Inorganic										
Metals										
Lead, Dissolved	< 0.9	ug/L	0.9		3 1	7421		1/5/2018	CWT	1
Organic										
PVOC + Naphthalene										
Benzene	< 0.22	ug/l	0.22	0.69	1	GRO95/8021		1/2/2018	TCC	1
Ethylbenzene	< 0.53	ug/l	0.53	1.69	1	GRO95/8021		1/2/2018	TCC	1
Methyl tert-butyl ether (MTBE)	< 0.57	ug/l	0.57	1.82	1	GRO95/8021		1/2/2018	TCC	1
Naphthalene	< 1.7	ug/l	1.7	5.38	1	GRO95/8021		1/2/2018	TCC	1
Toluene	< 0.45	ug/l	0.45	1.45	1	GRO95/8021		1/2/2018	TCC	1
1,2,4-Trimethylbenzene	< 0.73	ug/l	0.73	2.33	1	GRO95/8021		1/2/2018	TCC	1
1,3,5-Trimethylbenzene	< 0.75	ug/l	0.75	2.39	1	GRO95/8021		1/2/2018	TCC	1
m&p-Xylene	< 1	ug/l	1	3.17	1	GRO95/8021		1/2/2018	TCC	1
o-Xylene	< 0.58	ug/l	0.58	1.84	1	GRO95/8021		1/2/2018	TCC	1

Lab Code 5034087C
 Sample ID MW-5
 Sample Matrix Water
 Sample Date 12/28/2017

	Result	Unit	LOD	LOQ	Dil	Method	Ext Date	Run Date	Analyst	Code
Inorganic										
Metals										
Lead, Dissolved	< 0.9	ug/L	0.9		3 1	7421		1/5/2018	CWT	1
Organic										
PVOC + Naphthalene										
Benzene	< 0.22	ug/l	0.22	0.69	1	GRO95/8021		1/2/2018	TCC	1
Ethylbenzene	< 0.53	ug/l	0.53	1.69	1	GRO95/8021		1/2/2018	TCC	1
Methyl tert-butyl ether (MTBE)	< 0.57	ug/l	0.57	1.82	1	GRO95/8021		1/2/2018	TCC	1
Naphthalene	< 1.7	ug/l	1.7	5.38	1	GRO95/8021		1/2/2018	TCC	1
Toluene	< 0.45	ug/l	0.45	1.45	1	GRO95/8021		1/2/2018	TCC	1
1,2,4-Trimethylbenzene	< 0.73	ug/l	0.73	2.33	1	GRO95/8021		1/2/2018	TCC	1
1,3,5-Trimethylbenzene	< 0.75	ug/l	0.75	2.39	1	GRO95/8021		1/2/2018	TCC	1
m&p-Xylene	< 1	ug/l	1	3.17	1	GRO95/8021		1/2/2018	TCC	1
o-Xylene	< 0.58	ug/l	0.58	1.84	1	GRO95/8021		1/2/2018	TCC	1

Project Name RYMENAM'S PROPERTY
 Project #

Invoice # E34087

Lab Code 5034087D
 Sample ID MW-2
 Sample Matrix Water
 Sample Date 12/28/2017

	Result	Unit	LOD	LOQ	Dil	Method	Ext Date	Run Date	Analyst	Code
Inorganic										
Metals										
Lead, Dissolved	4.7	ug/L	0.9		3 1	7421		1/5/2018	CWT	1
Organic										
PVOC + Naphthalene										
Benzene	< 0.22	ug/l	0.22	0.69	1	GRO95/8021		1/2/2018	TCC	1
Ethylbenzene	< 0.53	ug/l	0.53	1.69	1	GRO95/8021		1/2/2018	TCC	1
Methyl tert-butyl ether (MTBE)	< 0.57	ug/l	0.57	1.82	1	GRO95/8021		1/2/2018	TCC	1
Naphthalene	< 1.7	ug/l	1.7	5.38	1	GRO95/8021		1/2/2018	TCC	1
Toluene	< 0.45	ug/l	0.45	1.45	1	GRO95/8021		1/2/2018	TCC	1
1,2,4-Trimethylbenzene	< 0.73	ug/l	0.73	2.33	1	GRO95/8021		1/2/2018	TCC	1
1,3,5-Trimethylbenzene	< 0.75	ug/l	0.75	2.39	1	GRO95/8021		1/2/2018	TCC	1
m&p-Xylene	< 1	ug/l	1	3.17	1	GRO95/8021		1/2/2018	TCC	1
o-Xylene	< 0.58	ug/l	0.58	1.84	1	GRO95/8021		1/2/2018	TCC	1

Lab Code 5034087E
 Sample ID BPP AP-1
 Sample Matrix Water
 Sample Date 12/28/2017

	Result	Unit	LOD	LOQ	Dil	Method	Ext Date	Run Date	Analyst	Code
Inorganic										
Metals										
Lead, Dissolved	< 0.9	ug/L	0.9		3 1	7421		1/5/2018	CWT	1
Organic										
PVOC + Naphthalene										
Benzene	2.81	ug/l	0.22	0.69	1	GRO95/8021		1/2/2018	TCC	1
Ethylbenzene	< 0.53	ug/l	0.53	1.69	1	GRO95/8021		1/2/2018	TCC	1
Methyl tert-butyl ether (MTBE)	< 0.57	ug/l	0.57	1.82	1	GRO95/8021		1/2/2018	TCC	1
Naphthalene	< 1.7	ug/l	1.7	5.38	1	GRO95/8021		1/2/2018	TCC	1
Toluene	< 0.45	ug/l	0.45	1.45	1	GRO95/8021		1/2/2018	TCC	1
1,2,4-Trimethylbenzene	< 0.73	ug/l	0.73	2.33	1	GRO95/8021		1/2/2018	TCC	1
1,3,5-Trimethylbenzene	< 0.75	ug/l	0.75	2.39	1	GRO95/8021		1/2/2018	TCC	1
m&p-Xylene	< 1	ug/l	1	3.17	1	GRO95/8021		1/2/2018	TCC	1
o-Xylene	< 0.58	ug/l	0.58	1.84	1	GRO95/8021		1/2/2018	TCC	1

Project Name RYMENAM'S PROPERTY
 Project #

Invoice # E34087

Lab Code 5034087F
 Sample ID MW-4
 Sample Matrix Water
 Sample Date 12/28/2017

	Result	Unit	LOD	LOQ	Dil	Method	Ext Date	Run Date	Analyst	Code
Inorganic										
Metals										
Lead, Dissolved	7.0	ug/L	0.9	3	1	7421		1/5/2018	CWT	1
Organic										
PVOC + Naphthalene										
Benzene	< 1.1	ug/l	1.1	3.45	5	GRO95/8021		1/2/2018	TCC	1
Ethylbenzene	10.8	ug/l	2.65	8.45	5	GRO95/8021		1/2/2018	TCC	1
Methyl tert-butyl ether (MTBE)	< 2.85	ug/l	2.85	9.1	5	GRO95/8021		1/2/2018	TCC	1
Naphthalene	< 8.5	ug/l	8.5	26.9	5	GRO95/8021		1/2/2018	TCC	1
Toluene	2.55 "J"	ug/l	2.25	7.25	5	GRO95/8021		1/2/2018	TCC	1
1,2,4-Trimethylbenzene	27.8	ug/l	3.65	11.65	5	GRO95/8021		1/2/2018	TCC	1
1,3,5-Trimethylbenzene	8.4 "J"	ug/l	3.75	11.95	5	GRO95/8021		1/2/2018	TCC	1
m&p-Xylene	20.9	ug/l	5	15.85	5	GRO95/8021		1/2/2018	TCC	1
o-Xylene	15.7	ug/l	2.9	9.2	5	GRO95/8021		1/2/2018	TCC	1

Lab Code 5034087G
 Sample ID MW-3
 Sample Matrix Water
 Sample Date 12/28/2017

	Result	Unit	LOD	LOQ	Dil	Method	Ext Date	Run Date	Analyst	Code
Inorganic										
Metals										
Lead, Dissolved	1.9 "J"	ug/L	0.9	3	1	7421		1/5/2018	CWT	1
Organic										
PVOC + Naphthalene										
Benzene	5.8 "J"	ug/l	2.2	6.9	10	GRO95/8021		1/2/2018	TCC	1
Ethylbenzene	57	ug/l	5.3	16.9	10	GRO95/8021		1/2/2018	TCC	1
Methyl tert-butyl ether (MTBE)	< 5.7	ug/l	5.7	18.2	10	GRO95/8021		1/2/2018	TCC	1
Naphthalene	< 17	ug/l	17	53.8	10	GRO95/8021		1/2/2018	TCC	1
Toluene	8.7 "J"	ug/l	4.5	14.5	10	GRO95/8021		1/2/2018	TCC	1
1,2,4-Trimethylbenzene	116	ug/l	7.3	23.3	10	GRO95/8021		1/2/2018	TCC	1
1,3,5-Trimethylbenzene	23.4 "J"	ug/l	7.5	23.9	10	GRO95/8021		1/2/2018	TCC	1
m&p-Xylene	97	ug/l	10	31.7	10	GRO95/8021		1/2/2018	TCC	1
o-Xylene	32	ug/l	5.8	18.4	10	GRO95/8021		1/2/2018	TCC	1

Project Name RYMENAM'S PROPERTY
 Project #

Invoice # E34087

Lab Code 5034087H
 Sample ID CLUB 54 MW-1
 Sample Matrix Water
 Sample Date 12/28/2017

	Result	Unit	LOD	LOQ	Dil	Method	Ext Date	Run Date	Analyst	Code
Inorganic										
Metals										
Lead, Dissolved	1.2 "J"	ug/L	0.9	3	1	7421		1/5/2018	CWT	1
Organic										
PVOC + Naphthalene										
Benzene	< 2.2	ug/l	2.2	6.9	10	GRO95/8021		1/2/2018	TCC	1
Ethylbenzene	31.1	ug/l	5.3	16.9	10	GRO95/8021		1/2/2018	TCC	1
Methyl tert-butyl ether (MTBE)	< 5.7	ug/l	5.7	18.2	10	GRO95/8021		1/2/2018	TCC	1
Naphthalene	< 17	ug/l	17	53.8	10	GRO95/8021		1/2/2018	TCC	1
Toluene	< 4.5	ug/l	4.5	14.5	10	GRO95/8021		1/2/2018	TCC	1
1,2,4-Trimethylbenzene	32	ug/l	7.3	23.3	10	GRO95/8021		1/2/2018	TCC	1
1,3,5-Trimethylbenzene	< 7.5	ug/l	7.5	23.9	10	GRO95/8021		1/2/2018	TCC	1
m&p-Xylene	16.1 "J"	ug/l	10	31.7	10	GRO95/8021		1/2/2018	TCC	1
o-Xylene	22	ug/l	5.8	18.4	10	GRO95/8021		1/2/2018	TCC	1

Lab Code 5034087I
 Sample ID MW-1R
 Sample Matrix Water
 Sample Date 12/28/2017

	Result	Unit	LOD	LOQ	Dil	Method	Ext Date	Run Date	Analyst	Code
Inorganic										
Metals										
Lead, Dissolved	3.4	ug/L	0.9	3	1	7421		1/5/2018	CWT	1
Organic										
PVOC + Naphthalene										
Benzene	< 11	ug/l	11	34.5	50	GRO95/8021		1/2/2018	TCC	1
Ethylbenzene	320	ug/l	26.5	84.5	50	GRO95/8021		1/2/2018	TCC	1
Methyl tert-butyl ether (MTBE)	< 28.5	ug/l	28.5	91	50	GRO95/8021		1/2/2018	TCC	1
Naphthalene	99 "J"	ug/l	85	269	50	GRO95/8021		1/2/2018	TCC	1
Toluene	194	ug/l	22.5	72.5	50	GRO95/8021		1/2/2018	TCC	1
1,2,4-Trimethylbenzene	1650	ug/l	36.5	116.5	50	GRO95/8021		1/2/2018	TCC	1
1,3,5-Trimethylbenzene	550	ug/l	37.5	119.5	50	GRO95/8021		1/2/2018	TCC	1
m&p-Xylene	1100	ug/l	50	158.5	50	GRO95/8021		1/2/2018	TCC	1
o-Xylene	390	ug/l	29	92	50	GRO95/8021		1/2/2018	TCC	1

Project Name RYMENAM'S PROPERTY
 Project #

Invoice # E34087

Lab Code 5034087J
 Sample ID TB
 Sample Matrix Water
 Sample Date 12/28/2017

	Result	Unit	LOD	LOQ	Dil	Method	Ext Date	Run Date	Analyst	Code
Organic										
PVOC + Naphthalene										
Benzene	< 0.22	ug/l	0.22	0.69	1	GRO95/8021		1/2/2018	TCC	1
Ethylbenzene	< 0.53	ug/l	0.53	1.69	1	GRO95/8021		1/2/2018	TCC	1
Methyl tert-butyl ether (MTBE)	< 0.57	ug/l	0.57	1.82	1	GRO95/8021		1/2/2018	TCC	1
Naphthalene	< 1.7	ug/l	1.7	5.38	1	GRO95/8021		1/2/2018	TCC	1
Toluene	< 0.45	ug/l	0.45	1.45	1	GRO95/8021		1/2/2018	TCC	1
1,2,4-Trimethylbenzene	< 0.73	ug/l	0.73	2.33	1	GRO95/8021		1/2/2018	TCC	1
1,3,5-Trimethylbenzene	< 0.75	ug/l	0.75	2.39	1	GRO95/8021		1/2/2018	TCC	1
m&p-Xylene	< 1	ug/l	1	3.17	1	GRO95/8021		1/2/2018	TCC	1
o-Xylene	< 0.58	ug/l	0.58	1.84	1	GRO95/8021		1/2/2018	TCC	1

"J" Flag: Analyte detected between LOD and LOQ

LOD Limit of Detection

LOQ Limit of Quantitation

Code **Comment**

1 Laboratory QC within limits.

CWT denotes sub contract lab - Certification #445126660

All solid sample results reported on a dry weight basis unless otherwise indicated. All LOD's and LOQ's are adjusted for dilutions but not dry weight. Subcontracted results are denoted by SUB in the analyst field.

Authorized Signature

Michael Ricker

Synergy

Environmental Lab, Inc.

1990 Prospect Ct. • Appleton, WI 54914
920-830-2455 • FAX 920-733-0631

Sample Handling Request

Rush Analysis Date Required _____
(Rushes accepted only with prior authorization)

Normal Turn Around

Account No.: _____ Quote No.: _____
Project #: _____
Sampler: (signature) *Jan Jan*

Project (Name / Location): *Rymean's Property / Pittsville (City Point)*

Reports To: *Kathy Brookhart* Invoice To: *Kathy Brookhart*

Company: _____ Company: *C/O METCO*

Address: *W199 State Hwy 54* Address: *709 Gillette St, Ste. 3*

City State Zip: *Pittsville, WI 54466* City State Zip: *La Crosse, WI 5*

Phone: _____ Phone: _____

FAX: _____ FAX: _____

Analysis Requested		Other Analysis												
DRO (Mod DRC Sep 95)	GRO (Mod GRO Sep 95)	LEAD (D:soil)	NITRATE/NITRITE	OIL & GREASE	PAH (EPA 8270)	PCB	PVOC (EPA 8021)	PVOC + NAPHTHALENE	SULFATE	TOTAL SUSPENDED SOLIDS	VOC DW (EPA 524.2)	VOC (EPA 8260)	8-PCRA METALS	PID/ FID
		X						X						
		X						X						
		X						X						
		X						X						
		X						X						
		X						X						
		X						X						
		X						X						
		X						X						
		X						X						

Lab ID	Sample I.D.	Collection Date	Time	Comp	Grab	Filtered Y/N	No. of Containers	Sample Type (Matrix)*	Preservation
S0210011	W199STH54 MW-1	12-29	945			Y	4	GW	HCL, HNO3
	Club 54 MW-1		905						
	MW-5		930						
	MW-2		955						
	BEP AP-1		1025						
	MW-4		1045						
	MW-3		1110						
	Club 54 MW-1		1135						
	MW-1R	✓	1200			✓	✓	✓	✓
	TB						1		HCL

Comments/Special Instructions ("Specify groundwater "GW", Drinking Water "DW", Waste Water "WW", Soil "S", Air "A", Oil, Sludge etc.)

Lab to send copy of report to METCO / Jason P. (Invoice to METCO)
** UTC rates apply*
** Agent status*

Sample Integrity - To be completed by receiving lab

Method of Shipment: _____

Temp of Temp Blank: _____

Control Seal Intact upon receipt: Yes No

Relinquished By: (sign) *Jan Jan* Time: *4:00 PM* Date: *12-29-17*

Received By: (sign) _____ Time: _____ Date: _____

Received in Laboratory By: *Christina* Time: *10:00* Date: *12/29/17*

Synergy Environmental Lab,

1990 Prospect Ct., Appleton, WI 54914 *P 920-830-2455 * F 920-733-0631

KATHY BROOKHART
KATHY BROOKHART
W199 STATE HWY 54
PITTSVILLE, WI 54466

Report Date 04-Apr-18

Project Name RYMENAM'S PROPERTY
Project #

Invoice # E34391

Lab Code 5034391A
Sample ID W199 STH 59 PW
Sample Matrix Water
Sample Date 3/21/2018

	Result	Unit	LOD	LOQ	Dil	Method	Ext Date	Run Date	Analyst	Code
Inorganic										
Metals										
Lead, Dissolved	< 0.9	ug/L	0.9		3 1	7421		3/23/2018	CWT	1
Organic										
PVOC + Naphthalene										
Benzene	< 0.22	ug/l	0.22	0.71	1	8260B		3/28/2018	CJR	1
Ethylbenzene	< 0.26	ug/l	0.26	0.83	1	8260B		3/28/2018	CJR	1
Methyl tert-butyl ether (MTBE)	< 0.28	ug/l	0.28	0.89	1	8260B		3/28/2018	CJR	1
Naphthalene	< 2.1	ug/l	2.1	6.65	1	8260B		3/28/2018	CJR	1
Toluene	< 0.19	ug/l	0.19	0.6	1	8260B		3/28/2018	CJR	1
1,2,4-Trimethylbenzene	< 0.8	ug/l	0.8	2.55	1	8260B		3/28/2018	CJR	1
1,3,5-Trimethylbenzene	< 0.63	ug/l	0.63	2	1	8260B		3/28/2018	CJR	1
m&p-Xylene	< 0.43	ug/l	0.43	1.38	1	8260B		3/28/2018	CJR	1
o-Xylene	< 0.29	ug/l	0.29	0.93	1	8260B		3/28/2018	CJR	1

Project Name RYMENAM'S PROPERTY
 Project #

Invoice # E34391

Lab Code 5034391B
 Sample ID CLUB 54 PZ-1
 Sample Matrix Water
 Sample Date 3/21/2018

	Result	Unit	LOD	LOQ	Dil	Method	Ext Date	Run Date	Analyst	Code
Inorganic										
Metals										
Lead, Dissolved	< 0.9	ug/L	0.9	3	1	7421		3/23/2018	CWT	1
Organic										
PVOC + Naphthalene										
Benzene	< 0.22	ug/l	0.22	0.71	1	8260B		3/28/2018	CJR	1
Ethylbenzene	< 0.26	ug/l	0.26	0.83	1	8260B		3/28/2018	CJR	1
Methyl tert-butyl ether (MTBE)	0.28 "J"	ug/l	0.28	0.89	1	8260B		3/28/2018	CJR	1
Naphthalene	< 2.1	ug/l	2.1	6.65	1	8260B		3/28/2018	CJR	1
Toluene	< 0.19	ug/l	0.19	0.6	1	8260B		3/28/2018	CJR	1
1,2,4-Trimethylbenzene	< 0.8	ug/l	0.8	2.55	1	8260B		3/28/2018	CJR	1
1,3,5-Trimethylbenzene	< 0.63	ug/l	0.63	2	1	8260B		3/28/2018	CJR	1
m&p-Xylene	< 0.43	ug/l	0.43	1.38	1	8260B		3/28/2018	CJR	1
o-Xylene	< 0.29	ug/l	0.29	0.93	1	8260B		3/28/2018	CJR	1

Lab Code 5034391C
 Sample ID MW-5
 Sample Matrix Water
 Sample Date 3/21/2018

	Result	Unit	LOD	LOQ	Dil	Method	Ext Date	Run Date	Analyst	Code
Inorganic										
Metals										
Lead, Dissolved	< 0.9	ug/L	0.9	3	1	7421		3/23/2018	CWT	1
Organic										
PVOC + Naphthalene										
Benzene	< 0.22	ug/l	0.22	0.71	1	8260B		3/28/2018	CJR	1
Ethylbenzene	< 0.26	ug/l	0.26	0.83	1	8260B		3/28/2018	CJR	1
Methyl tert-butyl ether (MTBE)	< 0.28	ug/l	0.28	0.89	1	8260B		3/28/2018	CJR	1
Naphthalene	< 2.1	ug/l	2.1	6.65	1	8260B		3/28/2018	CJR	1
Toluene	< 0.19	ug/l	0.19	0.6	1	8260B		3/28/2018	CJR	1
1,2,4-Trimethylbenzene	< 0.8	ug/l	0.8	2.55	1	8260B		3/28/2018	CJR	1
1,3,5-Trimethylbenzene	< 0.63	ug/l	0.63	2	1	8260B		3/28/2018	CJR	1
m&p-Xylene	< 0.43	ug/l	0.43	1.38	1	8260B		3/28/2018	CJR	1
o-Xylene	< 0.29	ug/l	0.29	0.93	1	8260B		3/28/2018	CJR	1

Project Name RYMENAM'S PROPERTY
 Project #

Invoice # E34391

Lab Code 5034391D
 Sample ID MW-2
 Sample Matrix Water
 Sample Date 3/21/2018

	Result	Unit	LOD	LOQ	Dil	Method	Ext Date	Run Date	Analyst	Code
Inorganic										
Metals										
Lead, Dissolved	< 0.9	ug/L	0.9		3	1 7421		3/23/2018	CWT	1
Organic										
PVOC + Naphthalene										
Benzene	< 0.22	ug/l	0.22	0.71	1	8260B		3/28/2018	CJR	1
Ethylbenzene	< 0.26	ug/l	0.26	0.83	1	8260B		3/28/2018	CJR	1
Methyl tert-butyl ether (MTBE)	< 0.28	ug/l	0.28	0.89	1	8260B		3/28/2018	CJR	1
Naphthalene	< 2.1	ug/l	2.1	6.65	1	8260B		3/28/2018	CJR	1
Toluene	< 0.19	ug/l	0.19	0.6	1	8260B		3/28/2018	CJR	1
1,2,4-Trimethylbenzene	< 0.8	ug/l	0.8	2.55	1	8260B		3/28/2018	CJR	1
1,3,5-Trimethylbenzene	< 0.63	ug/l	0.63	2	1	8260B		3/28/2018	CJR	1
m&p-Xylene	< 0.43	ug/l	0.43	1.38	1	8260B		3/28/2018	CJR	1
o-Xylene	< 0.29	ug/l	0.29	0.93	1	8260B		3/28/2018	CJR	1

Lab Code 5034391E
 Sample ID BPPAP-1
 Sample Matrix Water
 Sample Date 3/21/2018

	Result	Unit	LOD	LOQ	Dil	Method	Ext Date	Run Date	Analyst	Code
Inorganic										
Metals										
Lead, Dissolved	< 0.9	ug/L	0.9		3	1 7421		3/23/2018	CWT	1
Organic										
PVOC + Naphthalene										
Benzene	2.88	ug/l	0.22	0.71	1	8260B		3/28/2018	CJR	1
Ethylbenzene	< 0.26	ug/l	0.26	0.83	1	8260B		3/28/2018	CJR	1
Methyl tert-butyl ether (MTBE)	< 0.28	ug/l	0.28	0.89	1	8260B		3/28/2018	CJR	1
Naphthalene	< 2.1	ug/l	2.1	6.65	1	8260B		3/28/2018	CJR	1
Toluene	< 0.19	ug/l	0.19	0.6	1	8260B		3/28/2018	CJR	1
1,2,4-Trimethylbenzene	< 0.8	ug/l	0.8	2.55	1	8260B		3/28/2018	CJR	1
1,3,5-Trimethylbenzene	< 0.63	ug/l	0.63	2	1	8260B		3/28/2018	CJR	1
m&p-Xylene	< 0.43	ug/l	0.43	1.38	1	8260B		3/28/2018	CJR	1
o-Xylene	< 0.29	ug/l	0.29	0.93	1	8260B		3/28/2018	CJR	1

Project Name RYMENAM'S PROPERTY
 Project #

Invoice # E34391

Lab Code 5034391F
 Sample ID MW-4
 Sample Matrix Water
 Sample Date 3/21/2018

	Result	Unit	LOD	LOQ	Dil	Method	Ext Date	Run Date	Analyst	Code
Inorganic										
Metals										
Lead, Dissolved	0.9	ug/L	0.9		3 1	7421		3/23/2018	CWT	1
Organic										
PVOC + Naphthalene										
Benzene	3.5	ug/l	0.22	0.71	1	8260B		3/28/2018	CJR	1
Ethylbenzene	127	ug/l	0.26	0.83	1	8260B		3/28/2018	CJR	1
Methyl tert-butyl ether (MTBE)	< 0.28	ug/l	0.28	0.89	1	8260B		3/28/2018	CJR	1
Naphthalene	14.2	ug/l	2.1	6.65	1	8260B		3/28/2018	CJR	1
Toluene	17.4	ug/l	0.19	0.6	1	8260B		3/28/2018	CJR	1
1,2,4-Trimethylbenzene	155	ug/l	0.8	2.55	1	8260B		3/28/2018	CJR	1
1,3,5-Trimethylbenzene	36	ug/l	0.63	2	1	8260B		3/28/2018	CJR	1
m&p-Xylene	277	ug/l	0.43	1.38	1	8260B		3/28/2018	CJR	1
o-Xylene	115	ug/l	0.29	0.93	1	8260B		3/28/2018	CJR	1

Lab Code 5034391G
 Sample ID MW-3
 Sample Matrix Water
 Sample Date 3/21/2018

	Result	Unit	LOD	LOQ	Dil	Method	Ext Date	Run Date	Analyst	Code
Inorganic										
Metals										
Lead, Dissolved	< 0.9	ug/L	0.9		3 1	7421		3/23/2018	CWT	1
Organic										
PVOC + Naphthalene										
Benzene	1.22	ug/l	0.22	0.69	1	GRO95/8021		4/3/2018	CJR	1
Ethylbenzene	18	ug/l	0.53	1.69	1	GRO95/8021		4/3/2018	CJR	1
Methyl tert-butyl ether (MTBE)	< 0.57	ug/l	0.57	1.82	1	GRO95/8021		4/3/2018	CJR	1
Naphthalene	4.1 "J"	ug/l	1.7	5.38	1	GRO95/8021		4/3/2018	CJR	1
Toluene	2.68	ug/l	0.45	1.45	1	GRO95/8021		4/3/2018	CJR	1
1,2,4-Trimethylbenzene	98	ug/l	0.73	2.33	1	GRO95/8021		4/3/2018	CJR	1
1,3,5-Trimethylbenzene	16.2	ug/l	0.75	2.39	1	GRO95/8021		4/3/2018	CJR	1
m&p-Xylene	19.3	ug/l	1	3.17	1	GRO95/8021		4/3/2018	CJR	1
o-Xylene	20.1	ug/l	0.58	1.84	1	GRO95/8021		4/3/2018	CJR	1

Project Name RYMENAM'S PROPERTY
 Project #

Invoice # E34391

Lab Code 5034391H
 Sample ID CLUB 54 MW-1
 Sample Matrix Water
 Sample Date 3/21/2018

	Result	Unit	LOD	LOQ	Dil	Method	Ext Date	Run Date	Analyst	Code
Inorganic										
Metals										
Lead, Dissolved	0.9	ug/L	0.9	3	1	7421		3/23/2018	CWT	1
Organic										
PVOC + Naphthalene										
Benzene	0.72	ug/l	0.22	0.69	1	GRO95/8021		4/3/2018	CJR	1
Ethylbenzene	5.9	ug/l	0.53	1.69	1	GRO95/8021		4/3/2018	CJR	1
Methyl tert-butyl ether (MTBE)	< 0.57	ug/l	0.57	1.82	1	GRO95/8021		4/3/2018	CJR	1
Naphthalene	< 1.7	ug/l	1.7	5.38	1	GRO95/8021		4/3/2018	CJR	1
Toluene	0.45 "J"	ug/l	0.45	1.45	1	GRO95/8021		4/3/2018	CJR	1
1,2,4-Trimethylbenzene	9.8	ug/l	0.73	2.33	1	GRO95/8021		4/3/2018	CJR	1
1,3,5-Trimethylbenzene	1.35 "J"	ug/l	0.75	2.39	1	GRO95/8021		4/3/2018	CJR	1
m&p-Xylene	8.8	ug/l	1	3.17	1	GRO95/8021		4/3/2018	CJR	1
o-Xylene	4.9	ug/l	0.58	1.84	1	GRO95/8021		4/3/2018	CJR	1

Lab Code 5034391H
 Sample ID MW-1R
 Sample Matrix Water
 Sample Date 3/21/2018

	Result	Unit	LOD	LOQ	Dil	Method	Ext Date	Run Date	Analyst	Code
Inorganic										
Metals										
Lead, Dissolved	1.6	ug/L	0.9	3	1	7421		3/23/2018	CWT	1
Organic										
PVOC + Naphthalene										
Benzene	3.0 "J"	ug/l	2.2	7.1	10	8260B		3/28/2018	CJR	1
Ethylbenzene	304	ug/l	2.6	8.3	10	8260B		3/28/2018	CJR	1
Methyl tert-butyl ether (MTBE)	< 2.8	ug/l	2.8	8.9	10	8260B		3/28/2018	CJR	1
Naphthalene	56 "J"	ug/l	21	66.5	10	8260B		3/28/2018	CJR	1
Toluene	29.7	ug/l	1.9	6	10	8260B		3/28/2018	CJR	1
1,2,4-Trimethylbenzene	1080	ug/l	8	25.5	10	8260B		3/28/2018	CJR	1
1,3,5-Trimethylbenzene	390	ug/l	6.3	20	10	8260B		3/28/2018	CJR	1
m&p-Xylene	780	ug/l	4.3	13.8	10	8260B		3/28/2018	CJR	1
o-Xylene	146	ug/l	2.9	9.3	10	8260B		3/28/2018	CJR	1

Project Name RYMENAM'S PROPERTY
 Project #

Invoice # E34391

Lab Code 5034391J
 Sample ID TB
 Sample Matrix Water
 Sample Date 3/21/2018

	Result	Unit	LOD	LOQ	Dil	Method	Ext Date	Run Date	Analyst	Code
Organic										
PVOC + Naphthalene										
Benzene	< 0.22	ug/l	0.22	0.71	1	8260B		3/28/2018	CJR	1
Ethylbenzene	< 0.26	ug/l	0.26	0.83	1	8260B		3/28/2018	CJR	1
Methyl tert-butyl ether (MTBE)	< 0.28	ug/l	0.28	0.89	1	8260B		3/28/2018	CJR	1
Naphthalene	< 2.1	ug/l	2.1	6.65	1	8260B		3/28/2018	CJR	1
Toluene	< 0.19	ug/l	0.19	0.6	1	8260B		3/28/2018	CJR	1
1,2,4-Trimethylbenzene	< 0.8	ug/l	0.8	2.55	1	8260B		3/28/2018	CJR	1
1,3,5-Trimethylbenzene	< 0.63	ug/l	0.63	2	1	8260B		3/28/2018	CJR	1
m&p-Xylene	< 0.43	ug/l	0.43	1.38	1	8260B		3/28/2018	CJR	1
o-Xylene	< 0.29	ug/l	0.29	0.93	1	8260B		3/28/2018	CJR	1

"J" Flag: Analyte detected between LOD and LOQ

LOD Limit of Detection

LOQ Limit of Quantitation

Code **Comment**

1 Laboratory QC within limits.

CWT denotes sub contract lab - Certification #445126660

All solid sample results reported on a dry weight basis unless otherwise indicated. All LOD's and LOQ's are adjusted for dilutions but not dry weight. Subcontracted results are denoted by SUB in the analyst field.

Authorized Signature

Michael Ricker

CHAIN OF CUSTODY RECORD



Chain # No 3302

Page 1 of 1

Lab ID: _____
 Account No.: _____ Quote No.: _____
 Project #: _____
 Sampler: (signature) Tyler Woodke

Synergy Environmental Lab, Inc.

1990 Prospect Ct. • Appleton, WI 54914
 920-830-2455 • FAX 920-733-0631

Sample Handling Request
 Rush Analysis Date Required _____
 (Rushes accepted only with prior authorization)
 Normal Turn Around

Project (Name / Location): Rymenam's Property / Pittsville (City Point)
 Reports To: Kathy Brookhart Invoices To: Kathy Brookhart
 Company: _____ Company: 5/0 METCO
 Address: W199 State Hwy 54 Address: 709 Gillette St, Ste. 3
 City State Zip: Pittsville, WI 54466 City State Zip: La Cross, WI 54603
 Phone: _____ Phone: _____
 FAX: _____ FAX: _____

Analysis Requested											Other Analysis			
DRO (Mod DRO Sep 95)	GRO (Mod GRO Sep 95)	LEAD (Dissolved)	NITRATE/NITRITE	OIL & GREASE	PAH (EPA 8270)	PCB	PVOC (EPA 8021)	PVOC + NAPHTHALENE	SULFATE	TOTAL SUSPENDED SOLIDS	VOC DW (EPA 824-2)	VOC (EPA 8260)	8-PCRA METALS	PID/ FID

Lab ID	Sample I.D.	Collection Date	Time	Comp	Grab	Filtered Y/N	No. of Containers	Sample Type (Matrix)*	Preservation	DRO (Mod DRO Sep 95)	GRO (Mod GRO Sep 95)	LEAD (Dissolved)	NITRATE/NITRITE	OIL & GREASE	PAH (EPA 8270)	PCB	PVOC (EPA 8021)	PVOC + NAPHTHALENE	SULFATE	TOTAL SUSPENDED SOLIDS	VOC DW (EPA 824-2)	VOC (EPA 8260)	8-PCRA METALS	PID/ FID	
S3513511A	W199 STA 54 PW	3-21	11:05			Y	4	GW	HCL, HNO3			X							X						
B	Club 54 PZ-1		11:50									X							X						
C	MW-5		12:35									X							X						
D	MW-2		12:35									X							X						
E	BPP A P-1		1:05									X							X						
F	MW-4		1:25									X							X						
G	MW-3		1:45									X							X						
H	Club 54 MW		2:10									X							X						
I	MW-1R		2:25									X							X						
J	TB								HCL										X						

Comments/Special Instructions ("Specify groundwater "GW", Drinking Water "DW", Waste Water "WW", Soil "S", Air "A", Oil, Sludge etc.)
Lab to send copy of report to METCO/Jason P. (Invoice to METCO)
*U+C rates apply
*Agent Status

Sample Integrity: _____
 Method of Shipment: _____
 Temp. of Sample/Blank: _____ °C/Inlet:
 Coolant Seal Intact upon receipt: Yes No

Relinquished By: (sign) Tyler Woodke Time 8:00AM Date 3-22-18 Received By: (sign) _____ Time _____ Date _____

Received in Laboratory By: [Signature] Time: 8:00 Date: 3/23/18

Synergy Environmental Lab,

1990 Prospect Ct., Appleton, WI 54914 *P 920-830-2455 * F 920-733-0631

KATHY BROOKHART
 KATHY BROOKHART
 W199 STATE HWY 54
 PITTSVILLE, WI 54466

Report Date 26-Jun-18

Project Name RYMENAM'S PROPERTY
 Project #

Invoice # E34809

Lab Code 5034809A
 Sample ID W199 STH 54
 Sample Matrix Water
 Sample Date 6/14/2018

	Result	Unit	LOD	LOQ	Dil	Method	Ext Date	Run Date	Analyst	Code
Inorganic										
Metals										
Lead, Dissolved	< 0.9	ug/L	0.9		3 1	7421		6/19/2018	CWT	1
Organic										
PVOC + Naphthalene										
Benzene	< 0.22	ug/l	0.22	0.69	1	GRO95/8021		6/19/2018	CJR	1
Ethylbenzene	< 0.53	ug/l	0.53	1.69	1	GRO95/8021		6/19/2018	CJR	1
Methyl tert-butyl ether (MTBE)	< 0.57	ug/l	0.57	1.82	1	GRO95/8021		6/19/2018	CJR	1
Naphthalene	< 1.7	ug/l	1.7	5.38	1	GRO95/8021		6/19/2018	CJR	1
Toluene	< 0.45	ug/l	0.45	1.45	1	GRO95/8021		6/19/2018	CJR	1
1,2,4-Trimethylbenzene	< 0.73	ug/l	0.73	2.33	1	GRO95/8021		6/19/2018	CJR	1
1,3,5-Trimethylbenzene	< 0.75	ug/l	0.75	2.39	1	GRO95/8021		6/19/2018	CJR	1
m&p-Xylene	< 1	ug/l	1	3.17	1	GRO95/8021		6/19/2018	CJR	1
o-Xylene	< 0.58	ug/l	0.58	1.84	1	GRO95/8021		6/19/2018	CJR	1

Project #

Lab Code 5034809B
 Sample ID CLUB 54 PZ-1
 Sample Matrix Water
 Sample Date 6/14/2018

	Result	Unit	LOD	LOQ	Dil	Method	Ext Date	Run Date	Analyst	Code
Inorganic										
Metals										
Lead, Dissolved	< 0.9	ug/L	0.9		3	1 7421		6/19/2018	CWT	1
Organic										
PVOC + Naphthalene										
Benzene	< 0.22	ug/l	0.22	0.69	1	GRO95/8021		6/19/2018	CJR	1
Ethylbenzene	< 0.53	ug/l	0.53	1.69	1	GRO95/8021		6/19/2018	CJR	1
Methyl tert-butyl ether (MTBE)	< 0.57	ug/l	0.57	1.82	1	GRO95/8021		6/19/2018	CJR	1
Naphthalene	< 1.7	ug/l	1.7	5.38	1	GRO95/8021		6/19/2018	CJR	1
Toluene	< 0.45	ug/l	0.45	1.45	1	GRO95/8021		6/19/2018	CJR	1
1,2,4-Trimethylbenzene	< 0.73	ug/l	0.73	2.33	1	GRO95/8021		6/19/2018	CJR	1
1,3,5-Trimethylbenzene	< 0.75	ug/l	0.75	2.39	1	GRO95/8021		6/19/2018	CJR	1
m&p-Xylene	< 1	ug/l	1	3.17	1	GRO95/8021		6/19/2018	CJR	1
o-Xylene	< 0.58	ug/l	0.58	1.84	1	GRO95/8021		6/19/2018	CJR	1

Lab Code 5034809C
 Sample ID MW-5
 Sample Matrix Water
 Sample Date 6/14/2018

	Result	Unit	LOD	LOQ	Dil	Method	Ext Date	Run Date	Analyst	Code
Inorganic										
Metals										
Lead, Dissolved	< 0.9	ug/L	0.9		3	1 7421		6/19/2018	CWT	1
Organic										
PVOC + Naphthalene										
Benzene	2.76	ug/l	0.22	0.69	1	GRO95/8021		6/19/2018	CJR	1
Ethylbenzene	1.46 "J"	ug/l	0.53	1.69	1	GRO95/8021		6/19/2018	CJR	1
Methyl tert-butyl ether (MTBE)	< 0.57	ug/l	0.57	1.82	1	GRO95/8021		6/19/2018	CJR	1
Naphthalene	2.67 "J"	ug/l	1.7	5.38	1	GRO95/8021		6/19/2018	CJR	1
Toluene	0.84 "J"	ug/l	0.45	1.45	1	GRO95/8021		6/19/2018	CJR	1
1,2,4-Trimethylbenzene	20.7	ug/l	0.73	2.33	1	GRO95/8021		6/19/2018	CJR	1
1,3,5-Trimethylbenzene	1.24 "J"	ug/l	0.75	2.39	1	GRO95/8021		6/19/2018	CJR	1
m&p-Xylene	6.0	ug/l	1	3.17	1	GRO95/8021		6/19/2018	CJR	1
o-Xylene	2.94	ug/l	0.58	1.84	1	GRO95/8021		6/19/2018	CJR	1

Project #

Lab Code 5034809D
 Sample ID MW-2
 Sample Matrix Water
 Sample Date 6/14/2018

	Result	Unit	LOD	LOQ	Dil	Method	Ext Date	Run Date	Analyst	Code
Inorganic										
Metals										
Lead, Dissolved	4.3	ug/L	0.9	3	1	7421		6/19/2018	CWT	1
Organic										
PVOC + Naphthalene										
Benzene	< 0.22	ug/l	0.22	0.69	1	GRO95/8021		6/19/2018	CJR	1
Ethylbenzene	< 0.53	ug/l	0.53	1.69	1	GRO95/8021		6/19/2018	CJR	1
Methyl tert-butyl ether (MTBE)	< 0.57	ug/l	0.57	1.82	1	GRO95/8021		6/19/2018	CJR	1
Naphthalene	< 1.7	ug/l	1.7	5.38	1	GRO95/8021		6/19/2018	CJR	1
Toluene	< 0.45	ug/l	0.45	1.45	1	GRO95/8021		6/19/2018	CJR	1
1,2,4-Trimethylbenzene	< 0.73	ug/l	0.73	2.33	1	GRO95/8021		6/19/2018	CJR	1
1,3,5-Trimethylbenzene	< 0.75	ug/l	0.75	2.39	1	GRO95/8021		6/19/2018	CJR	1
m&p-Xylene	< 1	ug/l	1	3.17	1	GRO95/8021		6/19/2018	CJR	1
o-Xylene	< 0.58	ug/l	0.58	1.84	1	GRO95/8021		6/19/2018	CJR	1

Lab Code 5034809E
 Sample ID BPP AP-1
 Sample Matrix Water
 Sample Date 6/14/2018

	Result	Unit	LOD	LOQ	Dil	Method	Ext Date	Run Date	Analyst	Code
Inorganic										
Metals										
Lead, Dissolved	< 0.9	ug/L	0.9	3	1	7421		6/19/2018	CWT	1
Organic										
PVOC + Naphthalene										
Benzene	2.47	ug/l	0.22	0.69	1	GRO95/8021		6/19/2018	CJR	1
Ethylbenzene	< 0.53	ug/l	0.53	1.69	1	GRO95/8021		6/19/2018	CJR	1
Methyl tert-butyl ether (MTBE)	< 0.57	ug/l	0.57	1.82	1	GRO95/8021		6/19/2018	CJR	1
Naphthalene	< 1.7	ug/l	1.7	5.38	1	GRO95/8021		6/19/2018	CJR	1
Toluene	< 0.45	ug/l	0.45	1.45	1	GRO95/8021		6/19/2018	CJR	1
1,2,4-Trimethylbenzene	< 0.73	ug/l	0.73	2.33	1	GRO95/8021		6/19/2018	CJR	1
1,3,5-Trimethylbenzene	< 0.75	ug/l	0.75	2.39	1	GRO95/8021		6/19/2018	CJR	1
m&p-Xylene	< 1	ug/l	1	3.17	1	GRO95/8021		6/19/2018	CJR	1
o-Xylene	< 0.58	ug/l	0.58	1.84	1	GRO95/8021		6/19/2018	CJR	1

Project #

Lab Code 5034809F
 Sample ID CLUB 54 MW-1
 Sample Matrix Water
 Sample Date 6/14/2018

	Result	Unit	LOD	LOQ	Dil	Method	Ext Date	Run Date	Analyst	Code
Inorganic										
Metals										
Lead, Dissolved	< 0.9	ug/L	0.9		3 1	7421		6/19/2018	CWT	1
Organic										
PVOC + Naphthalene										
Benzene	4.2	ug/l	0.22	0.69	1	GRO95/8021		6/19/2018	CJR	1
Ethylbenzene	141	ug/l	0.53	1.69	1	GRO95/8021		6/19/2018	CJR	1
Methyl tert-butyl ether (MTBE)	< 0.57	ug/l	0.57	1.82	1	GRO95/8021		6/19/2018	CJR	1
Naphthalene	22.4	ug/l	1.7	5.38	1	GRO95/8021		6/19/2018	CJR	1
Toluene	29.5	ug/l	0.45	1.45	1	GRO95/8021		6/19/2018	CJR	1
1,2,4-Trimethylbenzene	166	ug/l	0.73	2.33	1	GRO95/8021		6/19/2018	CJR	1
1,3,5-Trimethylbenzene	32	ug/l	0.75	2.39	1	GRO95/8021		6/19/2018	CJR	1
m&p-Xylene	340	ug/l	1	3.17	1	GRO95/8021		6/19/2018	CJR	1
o-Xylene	66	ug/l	0.58	1.84	1	GRO95/8021		6/19/2018	CJR	1

Lab Code 5034809G
 Sample ID MW-4
 Sample Matrix Water
 Sample Date 6/14/2018

	Result	Unit	LOD	LOQ	Dil	Method	Ext Date	Run Date	Analyst	Code
Inorganic										
Metals										
Lead, Dissolved	2.0 "J"	ug/L	0.9		3 1	7421		6/19/2018	CWT	1
Organic										
PVOC + Naphthalene										
Benzene	2.27	ug/l	0.22	0.69	1	GRO95/8021		6/20/2018	CJR	1
Ethylbenzene	39	ug/l	0.53	1.69	1	GRO95/8021		6/20/2018	CJR	1
Methyl tert-butyl ether (MTBE)	< 0.57	ug/l	0.57	1.82	1	GRO95/8021		6/20/2018	CJR	1
Naphthalene	9.5	ug/l	1.7	5.38	1	GRO95/8021		6/20/2018	CJR	1
Toluene	8.7	ug/l	0.45	1.45	1	GRO95/8021		6/20/2018	CJR	1
1,2,4-Trimethylbenzene	65	ug/l	0.73	2.33	1	GRO95/8021		6/20/2018	CJR	1
1,3,5-Trimethylbenzene	9.7	ug/l	0.75	2.39	1	GRO95/8021		6/20/2018	CJR	1
m&p-Xylene	80	ug/l	1	3.17	1	GRO95/8021		6/20/2018	CJR	1
o-Xylene	42	ug/l	0.58	1.84	1	GRO95/8021		6/20/2018	CJR	1

Project #

Lab Code 5034809H
 Sample ID MW-3
 Sample Matrix Water
 Sample Date 6/14/2018

	Result	Unit	LOD	LOQ	Dil	Method	Ext Date	Run Date	Analyst	Code
Inorganic										
Metals										
Lead, Dissolved	< 0.9	ug/L	0.9		3	1 7421		6/19/2018	CWT	1
Organic										
PVOC + Naphthalene										
Benzene	11.2	ug/l	0.22	0.69	1	GRO95/8021		6/20/2018	CJR	1
Ethylbenzene	25.3	ug/l	0.53	1.69	1	GRO95/8021		6/20/2018	CJR	1
Methyl tert-butyl ether (MTBE)	< 0.57	ug/l	0.57	1.82	1	GRO95/8021		6/20/2018	CJR	1
Naphthalene	17.8	ug/l	1.7	5.38	1	GRO95/8021		6/20/2018	CJR	1
Toluene	2.86	ug/l	0.45	1.45	1	GRO95/8021		6/20/2018	CJR	1
1,2,4-Trimethylbenzene	152	ug/l	0.73	2.33	1	GRO95/8021		6/20/2018	CJR	1
1,3,5-Trimethylbenzene	14.2	ug/l	0.75	2.39	1	GRO95/8021		6/20/2018	CJR	1
m&p-Xylene	84	ug/l	1	3.17	1	GRO95/8021		6/20/2018	CJR	1
o-Xylene	28.5	ug/l	0.58	1.84	1	GRO95/8021		6/20/2018	CJR	1

Lab Code 5034809I
 Sample ID MW-1R
 Sample Matrix Water
 Sample Date 6/14/2018

	Result	Unit	LOD	LOQ	Dil	Method	Ext Date	Run Date	Analyst	Code
Inorganic										
Metals										
Lead, Dissolved	5.4	ug/L	0.9		3	1 7421		6/19/2018	CWT	1
Organic										
PVOC + Naphthalene										
Benzene	15.3 "J"	ug/l	11	34.5	50	GRO95/8021		6/20/2018	CJR	1
Ethylbenzene	291	ug/l	26.5	84.5	50	GRO95/8021		6/20/2018	CJR	1
Methyl tert-butyl ether (MTBE)	< 28.5	ug/l	28.5	91	50	GRO95/8021		6/20/2018	CJR	1
Naphthalene	154 "J"	ug/l	85	269	50	GRO95/8021		6/20/2018	CJR	1
Toluene	34 "J"	ug/l	22.5	72.5	50	GRO95/8021		6/20/2018	CJR	1
1,2,4-Trimethylbenzene	1950	ug/l	36.5	116.5	50	GRO95/8021		6/20/2018	CJR	1
1,3,5-Trimethylbenzene	560	ug/l	37.5	119.5	50	GRO95/8021		6/20/2018	CJR	1
m&p-Xylene	1170	ug/l	50	158.5	50	GRO95/8021		6/20/2018	CJR	1
o-Xylene	178	ug/l	29	92	50	GRO95/8021		6/20/2018	CJR	1

Project #

Lab Code 5034809J
 Sample ID TB
 Sample Matrix Water
 Sample Date 6/14/2018

	Result	Unit	LOD	LOQ	Dil	Method	Ext Date	Run Date	Analyst	Code
Organic										
PVOC + Naphthalene										
Benzene	< 0.22	ug/l	0.22	0.69	1	GRO95/8021		6/19/2018	CJR	1
Ethylbenzene	< 0.53	ug/l	0.53	1.69	1	GRO95/8021		6/19/2018	CJR	1
Methyl tert-butyl ether (MTBE)	< 0.57	ug/l	0.57	1.82	1	GRO95/8021		6/19/2018	CJR	1
Naphthalene	< 1.7	ug/l	1.7	5.38	1	GRO95/8021		6/19/2018	CJR	1
Toluene	< 0.45	ug/l	0.45	1.45	1	GRO95/8021		6/19/2018	CJR	1
1,2,4-Trimethylbenzene	< 0.73	ug/l	0.73	2.33	1	GRO95/8021		6/19/2018	CJR	1
1,3,5-Trimethylbenzene	< 0.75	ug/l	0.75	2.39	1	GRO95/8021		6/19/2018	CJR	1
m&p-Xylene	< 1	ug/l	1	3.17	1	GRO95/8021		6/19/2018	CJR	1
o-Xylene	< 0.58	ug/l	0.58	1.84	1	GRO95/8021		6/19/2018	CJR	1

"J" Flag: Analyte detected between LOD and LOQ

LOD Limit of Detection

LOQ Limit of Quantitation

Code Comment

1 Laboratory QC within limits.

CWT denotes sub contract lab - Certification #445126660

All solid sample results reported on a dry weight basis unless otherwise indicated. All LOD's and LOQ's are adjusted for dilutions but not dry weight. Subcontracted results are denoted by SUB in the analyst field.

Authorized Signature

Michael Ricker

Environmental Lab, Inc.

1990 Prospect Ct. • Appleton, WI 54914
920-830-2455 • FAX 920-733-0631

Sample Handling Request

Rush Analysis Date Required
(Rushes accepted only with prior authorization)

Normal Turn Around

Account No.: _____ Quote No.: _____
Project #: _____
Sampler: (signature) Tym Woodke

Project (Name / Location): Rymenam's Property / Pittsville, WI
Reports To: Kathy Brookhart Invoice To: Kathy Brookhart
Company: _____ Company: Co METCO
Address: W199 State Hwy 54 Address: 709 Gillette Street, Ste 3
City State Zip: Pittsville, WI 54468 City State Zip: La Crosse, WI 54603
Phone: _____ Phone: _____
FAX: _____ FAX: _____

Analysis Requested		Other Analysis	
<input checked="" type="checkbox"/>	DRO (Mod DRO Sep 95)		
<input checked="" type="checkbox"/>	GRO (Mod GRO Sep 95)		
<input checked="" type="checkbox"/>	LEAD (Dissolved)		
<input checked="" type="checkbox"/>	NITRATE/NITRITE		
<input checked="" type="checkbox"/>	OIL & GREASE		
<input checked="" type="checkbox"/>	PAH (EPA 8270)		
<input checked="" type="checkbox"/>	PCB		
<input checked="" type="checkbox"/>	PVOC (EPA 8021)		
<input checked="" type="checkbox"/>	PVOC + NAPHTHALENE		
<input checked="" type="checkbox"/>	SULFATE		
<input checked="" type="checkbox"/>	TOTAL SUSPENDED SOLIDS		
<input checked="" type="checkbox"/>	VOC-DW (EPA 524.2)		
<input checked="" type="checkbox"/>	VOC (EPA 8260)		
<input checked="" type="checkbox"/>	8-PCRA METALS		
			PID/ FID

Sample I.D.	Collection Date	Time	Comp	Grab	Filtered Y/N	No. of Containers	Sample Type (Matrix)*	Preservation
<u>W199 ST454</u>	<u>6/14/18</u>	<u>1030</u>			<u>Y</u>	<u>4</u>	<u>GW</u>	<u>HCl, HNO3</u>
<u>Club 54 P2-1</u>		<u>930</u>						
<u>MW-5</u>		<u>950</u>						
<u>MW-2</u>		<u>1010</u>						
<u>BPP AP-1</u>		<u>1045</u>						
<u>Club 54 MW</u>		<u>1105</u>						
<u>MW-4</u>		<u>1125</u>						
<u>MW-3</u>		<u>1145</u>						
<u>MW-1R</u>		<u>1210</u>			<u>N</u>	<u>1</u>		<u>HCl</u>
<u>TB</u>								

Comments/Special Instructions (*Specify groundwater "GW", Drinking Water "DW", Waste Water "WW", Soil "S", Air "A", Oil, Sludge etc.)
Lab to send copy of Report to METCO/JASON P. (Invoice to METCO)
* U+L Rates Apply
* Agent Status

Sample Integrity: To be completed by receiving lab.
Method of Shipment: CS
Temp. of Temp. Blank: 10 °C On Ice
Cooler shall remain upon receipt: Yes No

Relinquished By: (sign) Tym Woodke Time 8:00 AM Date 6/15/18
Received By: (sign) _____ Time _____ Date _____
Received in Laboratory By: Ch... Time 10:00 Date 6/16/18