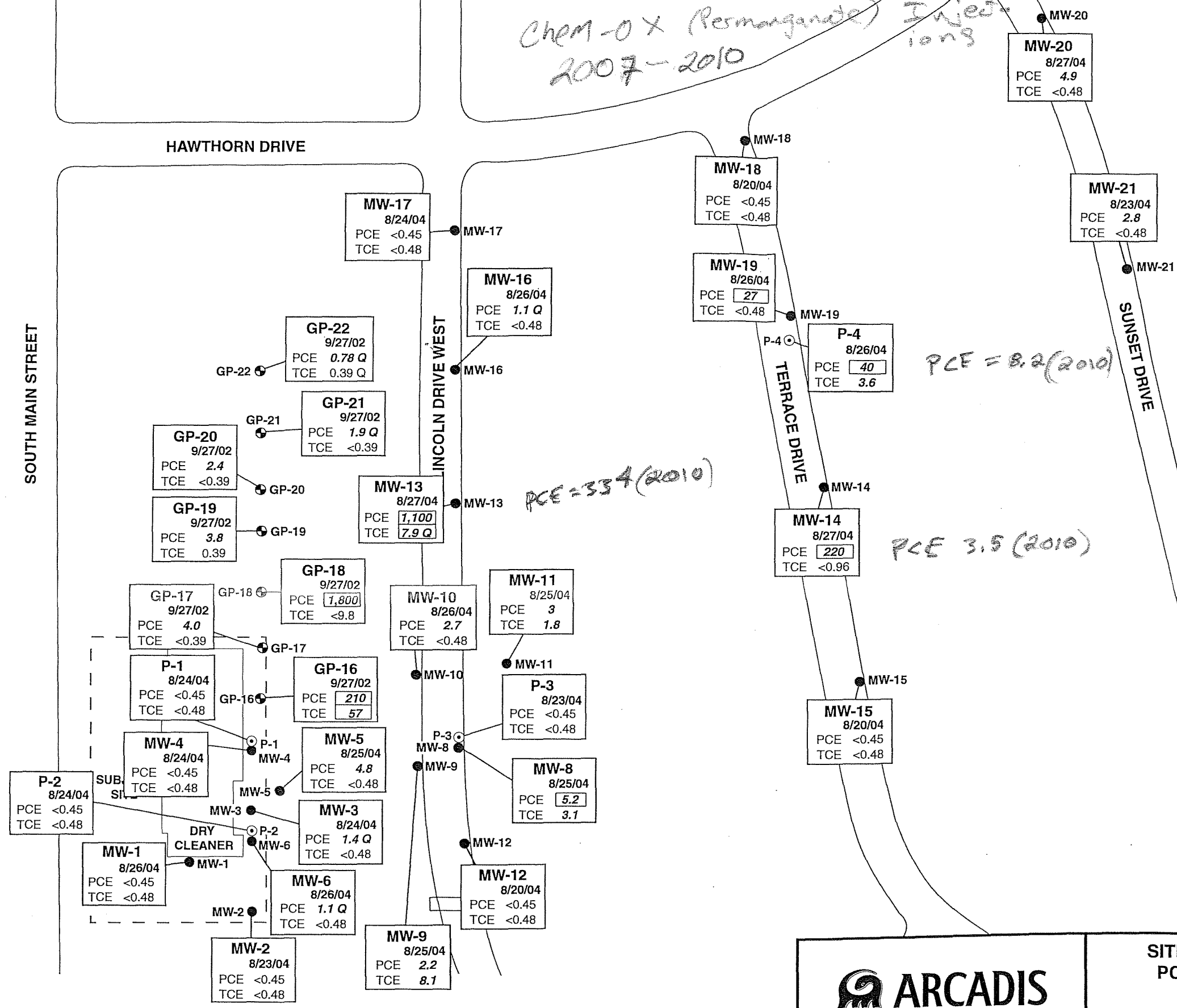
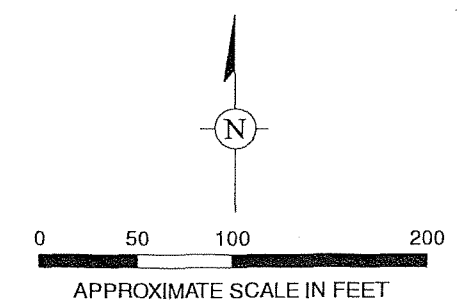


Chem-O-X (Permanganate) Injections
2007-2010

- LEGEND**
- MONITORING WELL LOCATION
 - ⊙ PIEZOMETER LOCATION
 - ⊕ SOIL BORING
 - 5 CONCENTRATION EXCEEDS PREVENTIVE ACTION LIMIT
 - 5 CONCENTRATION EXCEEDS ENFORCEMENT STANDARD
 - PCE Perchloroethene
 - TCE Trichloroethene
 - Q Concentration is between limit of quantitation and limit of detection.

All results in micrograms per liter.



PCE = 334 (2010)

PCE 3.5 (2010)

PCE = 8.2 (2010)

ARCADIS

SITE LAYOUT AND GROUNDWATER PCE AND TCE CONCENTRATIONS

DECORAH SHOPPING CENTER ANNEX
1011-1025 SOUTH MAIN STREET
WEST BEND, WISCONSIN