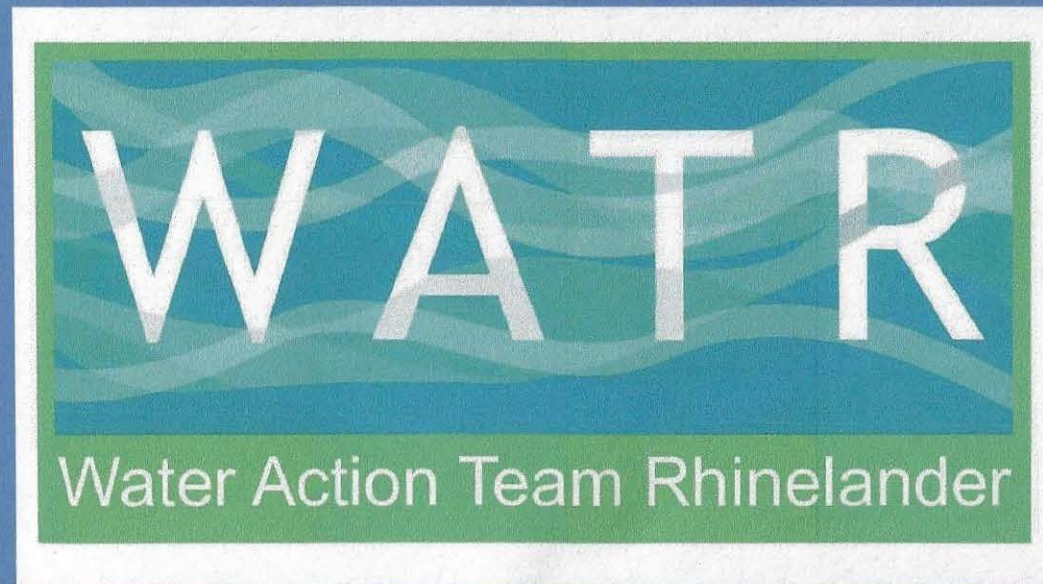
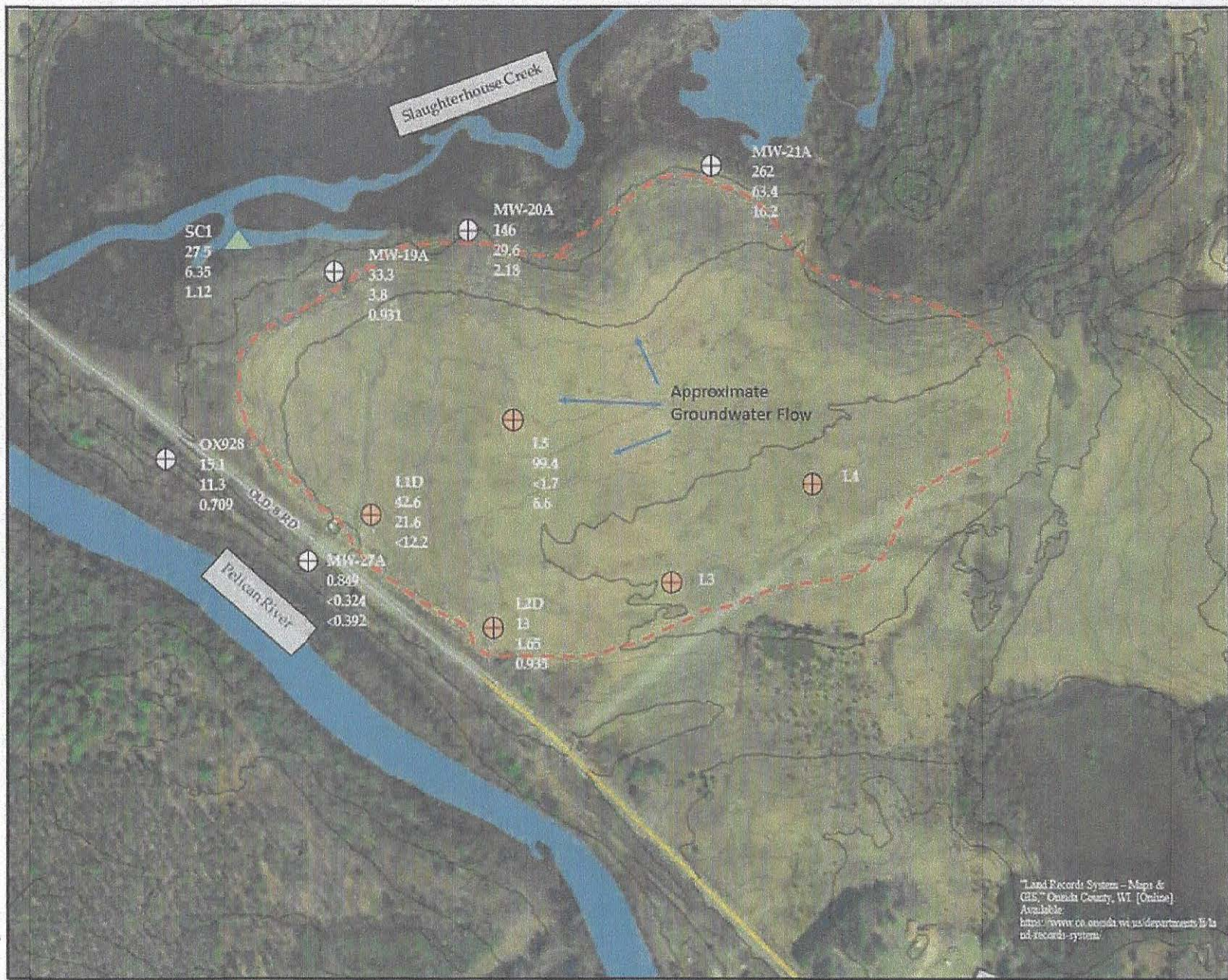


PFAS PUBLIC INFORMATION FORUM

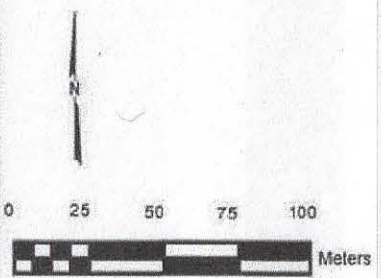
5 APRIL 201



Host: Myles Alexander
University of Wisconsin Extension, Oneida County
Community Development Educator
715-365-2759
myles.alexander@wisc.edu



- Legend**
- Approximate Limit of Waste
 - Monitoring Well
 - Leachate Well
 - Surface Sample
- Sample Location**
- PFOA (ppt)
 - PFOS (ppt)
 - PFHxS (ppt)



City of Rhinelander PFAS Sampling
Monitoring Well Sampling Results
 March 2021

Land Records System - Maps & GIS, Oneida County, WI (Online) Available: <https://www.co.oneida.wi.us/departments/land-records-system/>



Figure 3

City of Rhinelander Legacy Landfill Sample Results

Weather: 32 F, sunny, 4" of snow cover

Sample Location			OX928	OX928-DUP	MW-19A	MW-20A	MW-21A	MW-27A	
Sample Date			1/5/2021	1/5/2021	1/5/2021	1/5/2021	1/5/2021	1/5/2021	
Analyte		Units							
PFOA	20 ng/L ⁽ⁱⁱ⁾	2 ng/L ⁽ⁱⁱ⁾	ng/L	15.1	18	33.3	146	262	0.849F
PFOS	20 ng/L ⁽ⁱⁱ⁾	2 ng/L ⁽ⁱⁱ⁾	ng/L	11.3	14.3	3.8	29.6	63.4	<0.324
PFHxS	40 ng/L	4 ng/L	ng/L	0.709F	0.802F	0.931	2.18	16.2	<0.392

Analysis method is WSLH PFAS in Wet Solids

Bold = result exceeds LOQ

F next to result = Result is between LOD and LOQ

" < " = results is less than provided number; result does not exceed LOD

MW = Monitoring Well

ns = no sample

EF = Enforcement Standard (updated 11/6/2020)

Result exceeds recommended enforcement standard

Result exceeds recommended preventative action limit

PAL = Preventative Action Limit (updated 11/6/2020)

i The recommendations included in this table are reported as milligrams per

liter (mg/L), micrograms per liter (µg/L), or nanogram per liter (ng/L).

ii DHS recommends a combined enforcement standard of 20 ng/L and

combined preventative action limit of 2 ng/L for FOSA, NETFOSE, NETFOSA,

<https://www.dhs.wisconsin.gov/water/gws-cycle11.htm>

City of Rhinelander Legacy Landfill Sample Results

Weather: 32 F, sunny, 4" of snow cover									
Sample Location				OX928	OX928-DUP	MW-19A	MW-20A	MW-21A	MW-27A
Sample Date				1/5/21	1/5/21	1/5/21	1/5/21	1/5/21	1/5/21
Time of Sample		Recommended		3:15 PM	3:15 PM	4:06 PM	11:54 PM	1:56 PM	3:25 PM
Analyte	Recommended ES	PAL	Units						
PFPeA	--	--	ng/L	<0.351	6.06	5.65	<0.332	<0.335	<0.339
PFBS	450 µg/L	90 µg/L	ng/L	<0.434	0.671F	0.597F	<0.411	<0.415	<0.419
4:2 FTSA	--	--	ng/L	<0.447	<0.421	<0.420	<0.423	<0.427	<0.431
PFHxA	150 µg/L	30 µg/L	ng/L	2.87	2.99	12.7	12.5	59.2	<0.400
PFPeS	--	--	ng/L	<0.268	<0.253	0.312F	<0.254	<0.257	<0.259
HFPO-DA	300 ng/L	30 ng/L	ng/L	<0.522	<0.492	<0.491	15.9	ns	<0.504
PFHpA	--	--	ng/L	3.24	3.66	9.96	9.73	40.7	0.519F
PFHxS	40 ng/L	4 ng/L	ng/L	0.709F	0.802F	0.931	2.18	16.2	<0.392
DONA	3 µg/L	0.6 µg/L	ng/L	<0.416	<0.393	<0.392	<0.394	<0.398	<0.402
6:2 FTSA	--	--	ng/L	<0.507	<0.478	<0.477	<0.479	<0.484	<0.489
PFOA	20 ng/L ⁽ⁱⁱ⁾	2 ng/L ⁽ⁱⁱ⁾	ng/L	15.1	18	33.3	146	262	0.849F
PFHpS	--	--	ng/L	<0.396	<0.373	<0.373	0.676F	<0.378	<0.382
PFOS	20 ng/L ⁽ⁱⁱ⁾	2 ng/L ⁽ⁱⁱ⁾	ng/L	11.3	14.3	3.8	29.6	63.4	<0.324
PFNA	30 ng/L	3 ng/L	ng/L	1.62	1.7	0.457F	0.797F	0.733F	<0.412
9Cl-PF3ONS	--	--	ng/L	<0.415	<0.392	<0.391	<0.393	<0.397	<0.401
8:2 FTSA	--	--	ng/L	<0.442	<0.417	<0.416	<0.418	<0.423	<0.427
PFDA	300 ng/L	60 ng/L	ng/L	0.522F	0.525F	<0.366	<0.368	<0.372	<0.375
PFNS	--	--	ng/L	<0.495	<0.467	<0.466	<0.468	<0.473	<0.478
N-MeFOSAA	--	--	ng/L	<0.531	<0.501	0.549F	<0.502	3.49	<0.513
N-EtFOSAA	20 ng/L ⁽ⁱⁱ⁾	2 ng/L ⁽ⁱⁱ⁾	ng/L	<0.424	<0.400	1.72	4.76	97.4	<0.410
FOSA	20 ng/L ⁽ⁱⁱ⁾	2 ng/L ⁽ⁱⁱ⁾	ng/L	<4.03	<3.80	<3.79	<3.81	<3.85	<3.89
PFUnA	3 µg/L	0.6 µg/L	ng/L	<0.403	<0.380	<0.379	<0.381	<0.385	<0.389
PFDS	--	--	ng/L	<0.451	<0.425	<0.424	<0.426	0.571F	<0.435
11Cl-PF3OUdS	--	--	ng/L	<0.390	<0.368	<0.367	<0.369	<0.373	<0.376
PFDoA	500 ng/L	100 ng/L	ng/L	<0.380	<0.359	<0.358	<0.360	<0.364	<0.367
10:2 FTSA	--	--	ng/L	ns	<0.405	<0.404	<0.406	<0.410	<0.414
PFDoS	--	--	ng/L	<0.512	<0.483	<0.482	<0.485	<0.490	<0.495
PFTTrDA	--	--	ng/L	<0.397	<0.374	<0.373	<0.375	<0.379	<0.383
N-MeFOSA	--	--	ng/L	<0.796	<0.750	<0.749	ns	ns	<0.768
N-MeFOSE	--	--	ng/L	<0.401	<0.378	<0.377	<0.379	2.07	<0.387
N-EtFOSA	20 ng/L ⁽ⁱⁱ⁾	2 ng/L ⁽ⁱⁱ⁾	ng/L	<0.652	<0.614	<0.613	<0.616	11.5	<0.629
N-EtFOSE	20 ng/L ⁽ⁱⁱ⁾	2 ng/L ⁽ⁱⁱ⁾	ng/L	<0.409	<0.385	<0.384	<0.387	87.1	<0.394
PFTeDA	--	--	ng/L	<0.351	<0.331	<0.330	<0.332	<0.335	<0.339