

Beggs, Tauren R - DNR

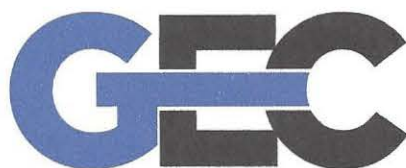
From: Brian Youngwirth <byoungwirth@generalengineering.net>
Sent: Thursday, November 17, 2016 10:25 AM
To: DuFresne, Kristin I - DNR
Cc: 'Garritt R. Bader'
Attachments: Imported Topsoil Documentation Letter.pdf; Historical Aerials.pdf; Regional and Site Topsoil Source Location Maps.pdf; Topsoil Placement and Sample Locations.pdf

Kristin, attached please find the Imported Topsoil Documentation Letter we discussed along with historical aerial photographs, topsoil source site maps, and topsoil placement and sample locations. Please let me know if you need anything additional to bring the Update Report and this additional information to the VPLE committee for review.

Thank you,

Brian Youngwirth
Environmental Project Manager | General Engineering Company
916 Silver Lake Drive | PO Box 340 | Portage, WI 53901
P 608-742-2169 | Fax 608-742-2592 | C 608-697-8010
byoungwirth@generalengineering.net
www.generalengineering.net

General Engineering Company
P.O. Box 340
916 Silver Lake Drive
Portage, WI 53901



608-742-2169 (Office)
608-742-2592 (Fax)
gcc@generalengineering.net
www.generalengineering.net

Engineers • Consultants • Inspectors

November 17, 2016

Ms. Kristin DuFresne
Wisconsin Department of Natural Resources
2984 Shawano Avenue
Green Bay, Wisconsin 54313

RE: IMPORTED TOPSOIL DOCUMENTATION LETTER

Former One Hour Martinizing, 1923 Main Street, Green Bay, Wisconsin
VPLE#: 06-05-576806
BRRS#: 02-05-217276
GEC Project Number 2-0615-231

Dear Ms. DuFresne:

In accordance with our telephone conversation on November 15, 2016, General Engineering Company (GEC) has prepared this letter to further document the source of the topsoil imported to the above-mentioned site as part of the recent construction and associated landscaping performed for the Familia Dental facility development. The testing performed to document the character of the topsoil fill is also provided within General Engineering Company's Site Investigation Update and Construction Documentation Report, dated September 26, 2016 and is summarized below.

The topsoil was imported by Mr. Dave Dellise of Duame Sand & Gravel, Inc., located in Lena, Wisconsin. In a letter dated September 19, 2016, Mr. Dellise indicated that imported topsoil was stripped from a new residential development at the intersection of Peppergrass Court and Indigo Bluff in the City of Green Bay. General Engineering reviewed historical aerial photographs of the location of the source topsoil on the Brown County Geographic Information System website. The photographs were dated 1938, 1960, 1978, 1992, 2000, 2005, 2010, and 2014 and are included as an attachment. In all of the photographs reviewed, the area of the source topsoil consisted of vacant agricultural land. A farmstead was present, approximately 300 feet south of the source topsoil location on the 1938 to 2005 aerial photographs. Peppergrass Court and Indigo Bluff appear on the 2010 and 2014 photographs, however no residential development had occurred at that time. Based on review of historical documentation, the source of the topsoil has only been utilized for agriculture. Additionally, review of the Wisconsin Department of Natural Resources RR Sites Map did not identify the source of the topsoil or the adjacent properties on the GIS Registry. Regional and Site Location Maps (3) of the topsoil source location are provided as attachments.

According to Mr. Dellise, approximately 30 loads of topsoil were transported to the Familia Dental site from the above-mentioned residential development and spread within the landscaped locations to a thickness of approximately 4 inches. The topsoil was transported to the site because there was no topsoil present on the subject site. Three soil samples (SS-1 to SS-3) were collected by GEC personnel on August 16, 2016 from imported topsoil placed within the landscaped and water detention areas. The locations of the topsoil and the sample locations are identified on the attached Figure (Topsoil Placement and Sampling Locations). The samples were submitted for laboratory analysis for the presence of volatile organic compounds (VOCs) and Resource Conservation and Recovery Act (RCRA) metals. The samples collected from SS-1 to SS-3 contained arsenic at concentrations ranging from 2.95 mg/kg to 3.43 mg/kg, which exceed their NR 720 soil to groundwater RCL but are below the WDNR established background value of 8 mg/kg. The concentrations are considered to be naturally occurring background levels. The other tested metals were either not detected or were detected at levels below their NR 720 soil standards or background levels. None of the samples contained VOCs.

Imported Topsoil Documentation Letter
Former One Hour Martinizing
VPLE#: 06-05-576806
November 17, 2016

Page 2

Please feel free to contact me at (608) 697-8010 if you have any questions regarding this correspondence.

Respectfully Submitted,

GENERAL ENGINEERING COMPANY



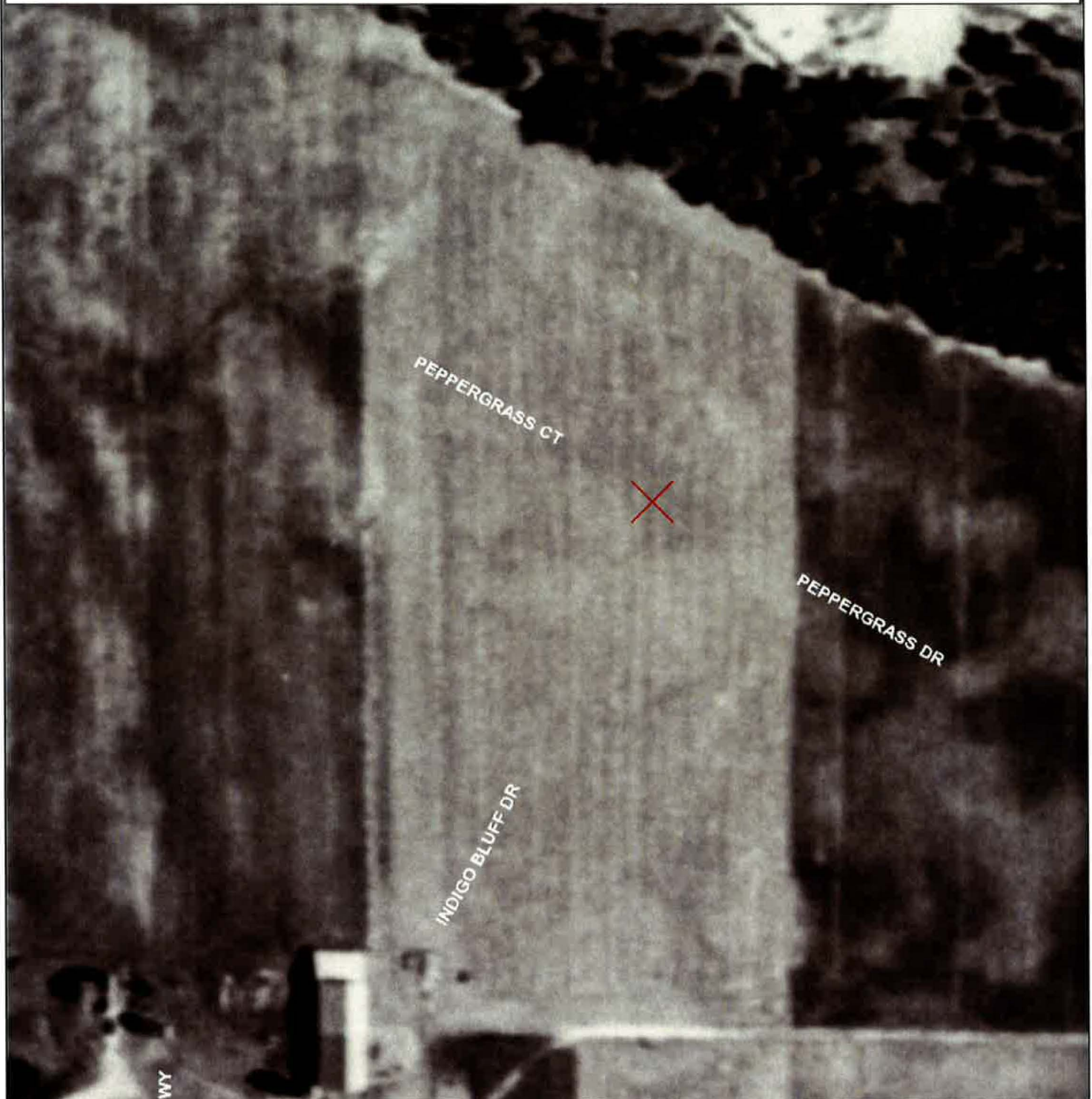
Brian Youngwirth
Environmental Project Manager

Cc: Garritt Bader

Attachments

Historical Aerial Photographs
Regional and Site Topsoil Source Location Maps (3)
Topsoil Placement and Sampling Location Figure

<Title> 1938 Aerial Photograph



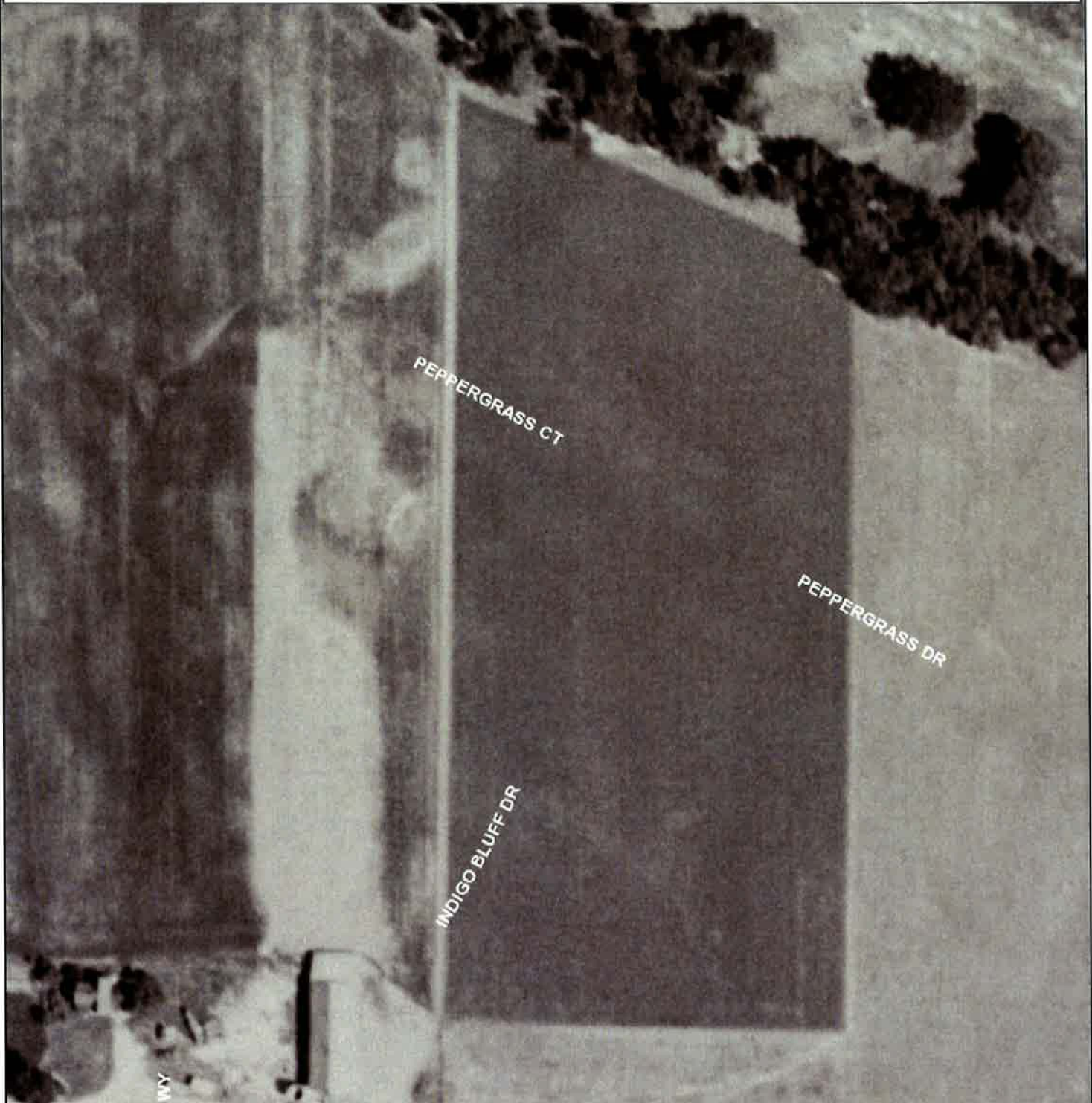
Map provided by the Brown County Planning & Land Services Department - Land Information Office (LIO)

A map key (legend) and other information about this map is available at: maps.gis.co.brown.wi.us

This map is intended for advisory purposes only. It is based on sources believed to be reliable, but Brown County distributes this information on an "As Is" basis. No warranties are implied. Boundaries shown on this map are general representations only and should not be used for legal documentation, boundary survey determinations, or other property boundary issues.

11/17/2016
Scale 1:1200

<Title> 1960 AERIAL PHOTOGRAPH



Map provided by the Brown County Planning & Land Services Department - Land Information Office (LIO)

A map key (legend) and other information about this map is available at: maps.gis.co.brown.wi.us

This map is intended for advisory purposes only. It is based on sources believed to be reliable, but Brown County distributes this information on an "As Is" basis. No warranties are implied. Boundaries shown on this map are general representations only and should not be used for legal documentation, boundary survey determinations, or other property boundary issues.

11/17/2016
Scale 1:1200

<Title> 1978 AERIAL PHOTOGRAPH



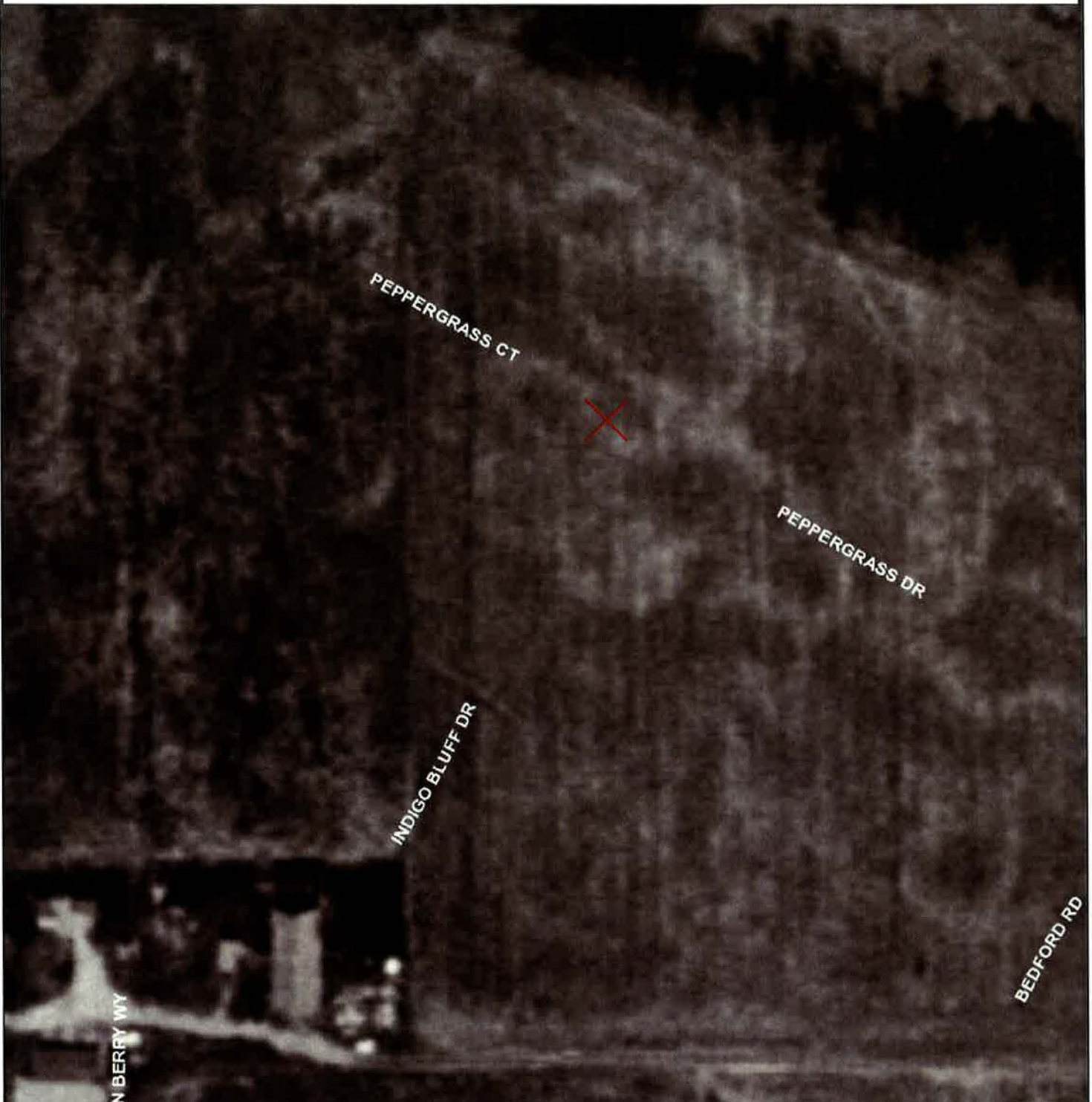
Map provided by the Brown County Planning & Land Services Department - Land Information Office (LIO)

A map key (legend) and other information about this map is available at: maps.gis.co.brown.wi.us

This map is intended for advisory purposes only. It is based on sources believed to be reliable, but Brown County distributes this information on an "As Is" basis. No warranties are implied. Boundaries shown on this map are general representations only and should not be used for legal documentation, boundary survey determinations, or other property boundary issues.

11/17/2016
Scale 1:1200

<Title> 1992 AERIAL PHOTOGRAPH



Map provided by the Brown County Planning & Land Services Department - Land Information Office (LIO)

A map key (legend) and other information about this map is available at: maps.gis.co.brown.wi.us

This map is intended for advisory purposes only. It is based on sources believed to be reliable, but Brown County distributes this information on an "As Is" basis. No warranties are implied. Boundaries shown on this map are general representations only and should not be used for legal documentation, boundary survey determinations, or other property boundary issues.

11/17/2016
Scale 1:1200

<Title> 2000 AERIAL PHOTOGRAPH



Map provided by the Brown County Planning & Land Services Department - Land Information Office (LIO)

A map key (legend) and other information about this map is available at: maps.gis.co.brown.wi.us

This map is intended for advisory purposes only. It is based on sources believed to be reliable, but Brown County distributes this information on an "As Is" basis. No warranties are implied. Boundaries shown on this map are general representations only and should not be used for legal documentation, boundary survey determinations, or other property boundary issues.

11/17/2016
Scale 1:1200

<Title> 2005 AERIAL PHOTOGRAPH



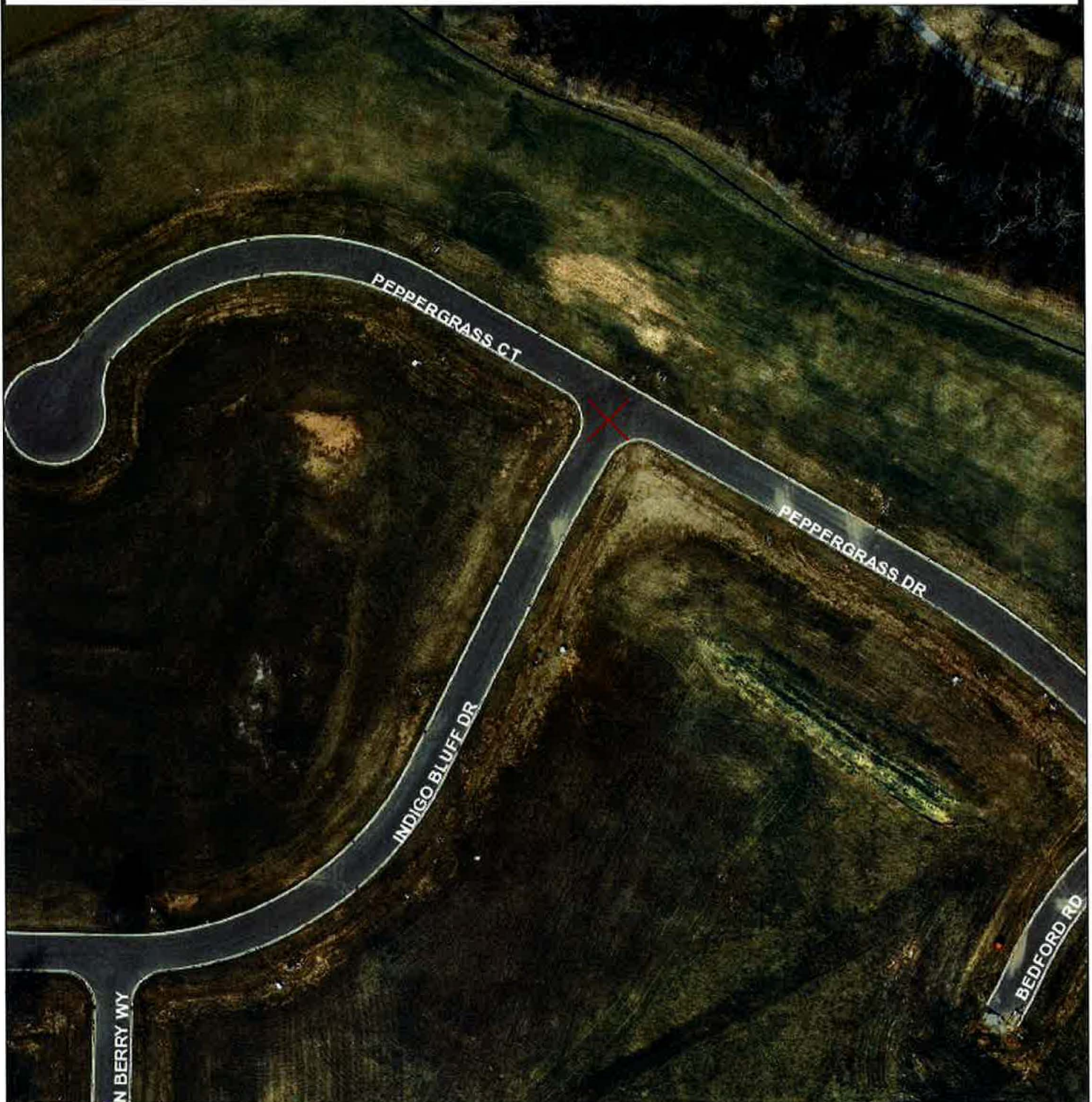
Map provided by the Brown County Planning & Land Services Department - Land Information Office (LIO)

A map key (legend) and other information about this map is available at: maps.gis.co.brown.wi.us

This map is intended for advisory purposes only. It is based on sources believed to be reliable, but Brown County distributes this information on an "As Is" basis. No warranties are implied. Boundaries shown on this map are general representations only and should not be used for legal documentation, boundary survey determinations, or other property boundary issues.

11/17/2016
Scale 1:1200

<Title>2010 AERIAL PHOTOGRAPH



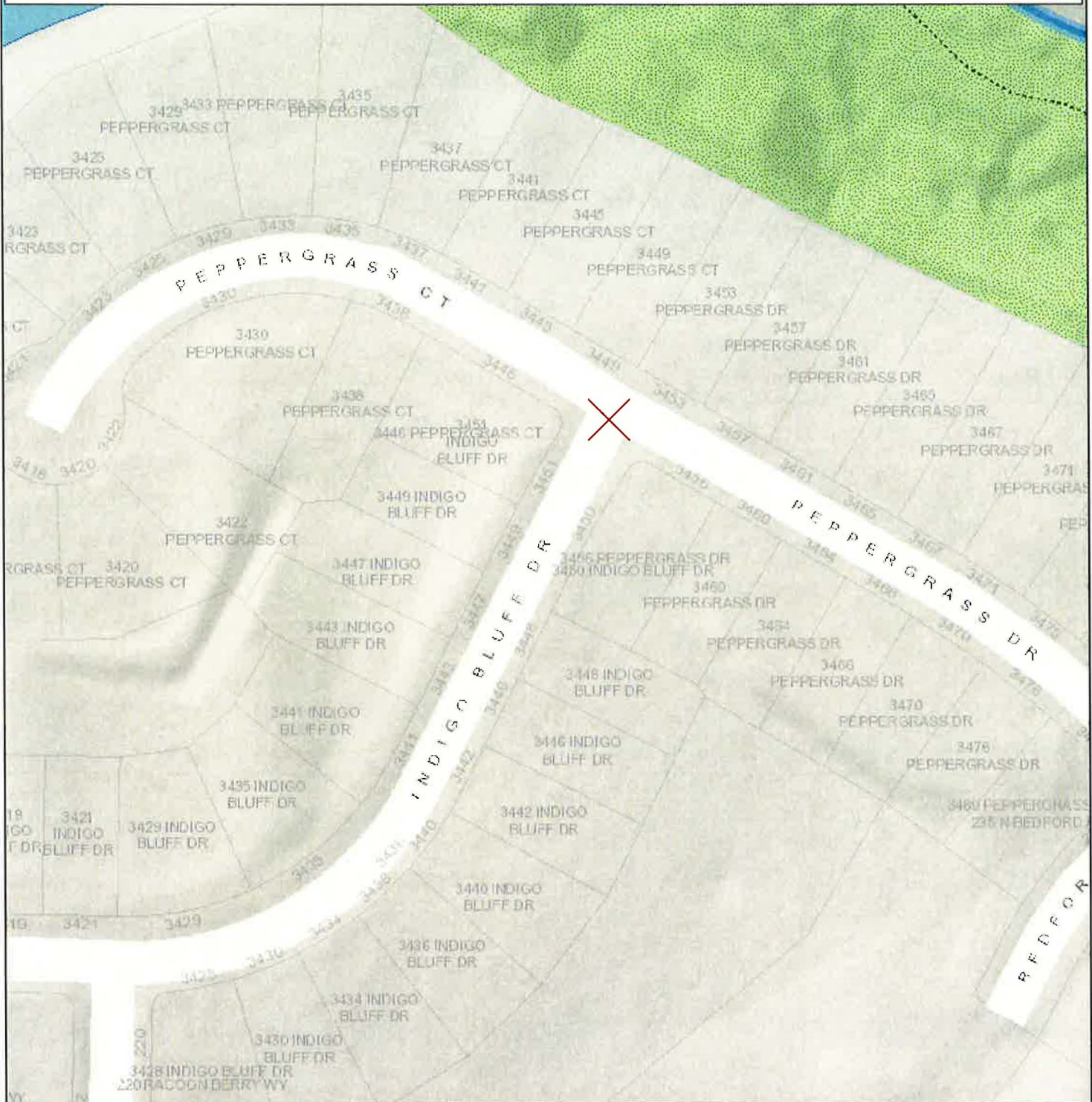
Map provided by the Brown County Planning & Land Services Department - Land Information Office (LIO)

A map key (legend) and other information about this map is available at: maps.gis.co.brown.wi.us

This map is intended for advisory purposes only. It is based on sources believed to be reliable, but Brown County distributes this information on an "As Is" basis. No warranties are implied. Boundaries shown on this map are general representations only and should not be used for legal documentation, boundary survey determinations, or other property boundary issues.

11/17/2016
Scale 1:1200

<Title>2014 AERIAL PHOTOGRAPH



Map provided by the Brown County Planning & Land Services Department - Land Information Office (LIO)

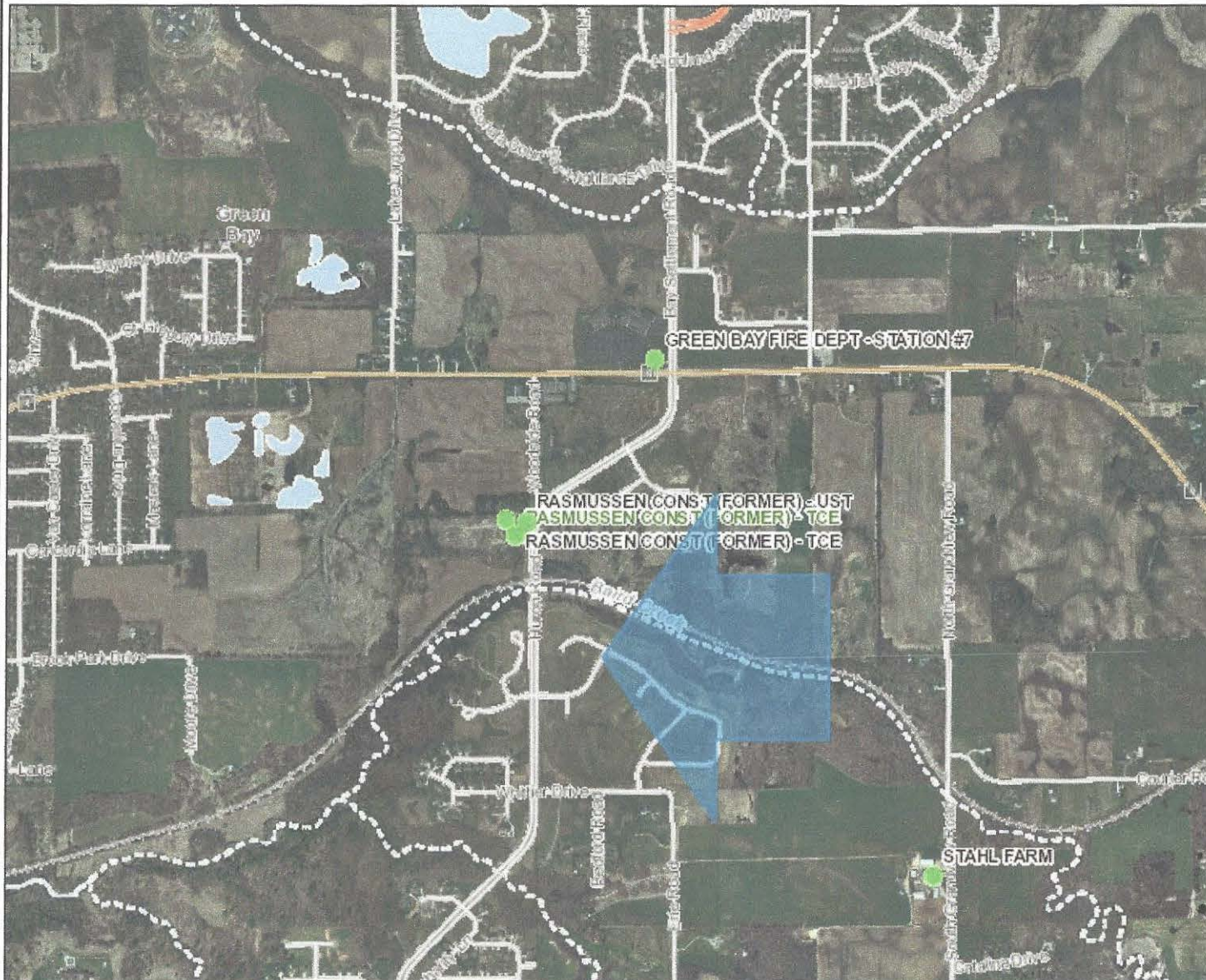
A map key (legend) and other information about this map is available at: maps.gis.co.brown.wi.us

This map is intended for advisory purposes only. It is based on sources believed to be reliable, but Brown County distributes this information on an "As Is" basis. No warranties are implied. Boundaries shown on this map are general representations only and should not be used for legal documentation, boundary survey determinations, or other property boundary issues.

11/17/2016
Scale 1:1200



Topsoil Source Location Map



Legend

- Open Site (ongoing cleanup)
- Open Site Boundary
- Closed Site (completed cleanup)
- Closed Site Boundary
- Groundwater Contamination
- Soil Contamination
- X Groundwater and Soil Contamination
- Contamination from Another Property
- D Dryclean Environmental Response Fund (DERF)
- G Green Space Grant (2004-2009)
- R Ready for Reuse
- S Site Assessment Grant (2001-2009)
- F State Funded Response
- S Sustainable Urban Development Zone (SUDZ)
- L General Liability Clarification Letters
- N Superfund NPL
- V Voluntary Party Liability Exemption
- R Rivers and Streams
- Open Water
- Municipality
- State Boundaries
- County Boundaries
- Major Roads**
- Interstate Highway
- State Highway
- US Highway

0.6 0 0.28 0.6 Miles

NAD_1983_HARN_Wisconsin_TM

© Latitude Geographics Group Ltd.

1: 17,723



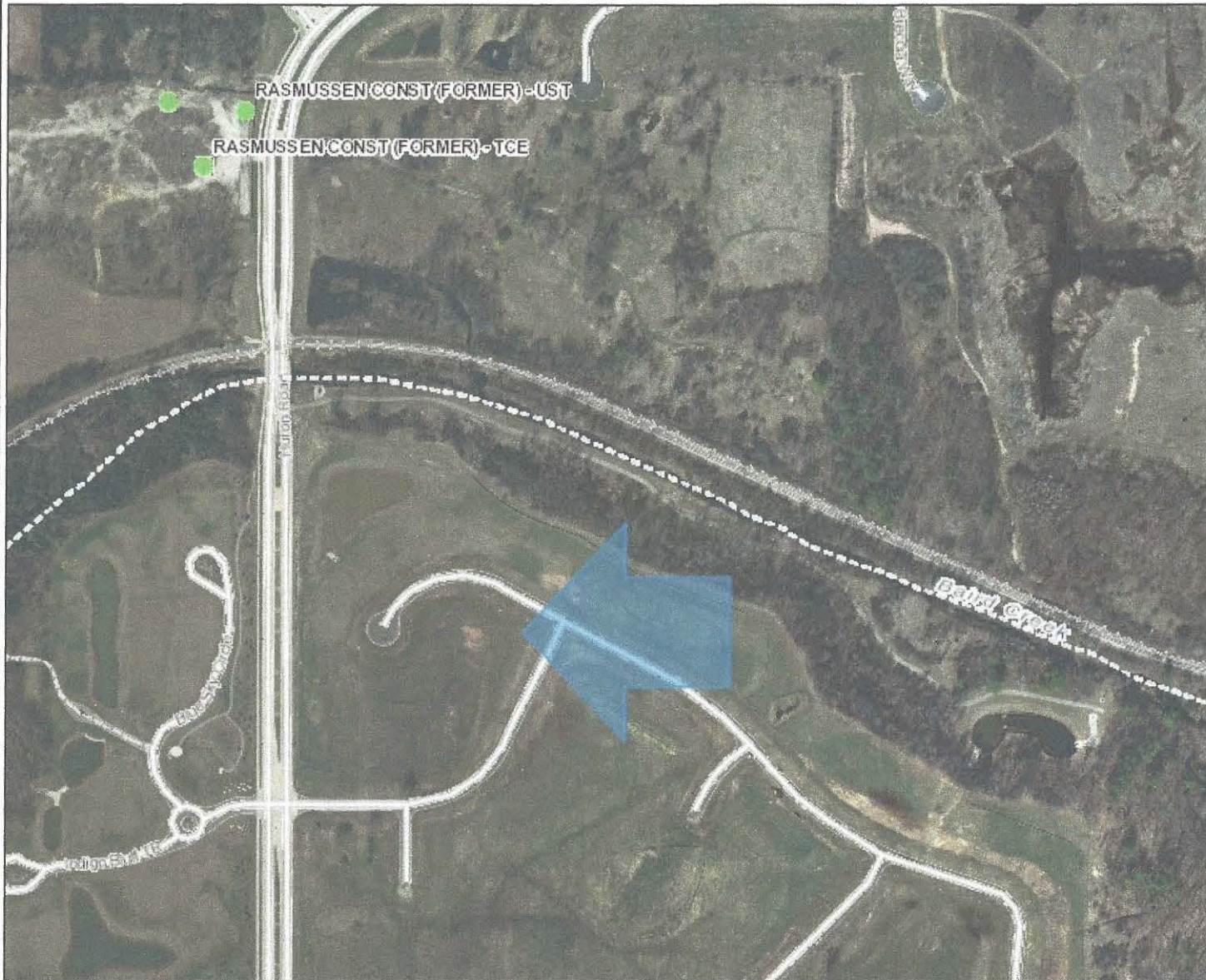
DISCLAIMER: The information shown on these maps has been obtained from various sources, and are of varying age, reliability and resolution. These maps are not intended to be used for navigation, nor are these maps an authoritative source of information about legal land ownership or public access. No warranty, expressed or implied, is made regarding accuracy, applicability for a particular use, completeness, or legality of the information depicted on this map. For more information, see the DNR Legal Notices web page: <http://dnr.wi.gov/org/legal/>

Note: Not all sites are mapped.

Notes



Topsoil Source Location Map



Legend

- Open Site (ongoing cleanup)
- Open Site Boundary
- Closed Site (completed cleanup)
- Closed Site Boundary
- Groundwater Contamination
- Soil Contamination
- Groundwater and Soil Contamination
- Contamination from Another Property
- Dryclean Environmental Response Fund (DERF)
- Green Space Grant (2004-2009)
- Ready for Reuse
- Site Assessment Grant (2001-2009)
- State Funded Response
- Sustainable Urban Development Zone (SUDZ)
- General Liability Clarification Letters
- Superfund NPL
- Voluntary Party Liability Exemption
- Rivers and Streams
- Open Water
- Municipality
- State Boundaries
- County Boundaries
- Major Roads**
 - Interstate Highway
 - State Highway
 - US Highway

0.1 0 0.07 0.1 Miles

NAD_1983_HARN_Wisconsin_TM

© Latitude Geographics Group Ltd.

1:4,431



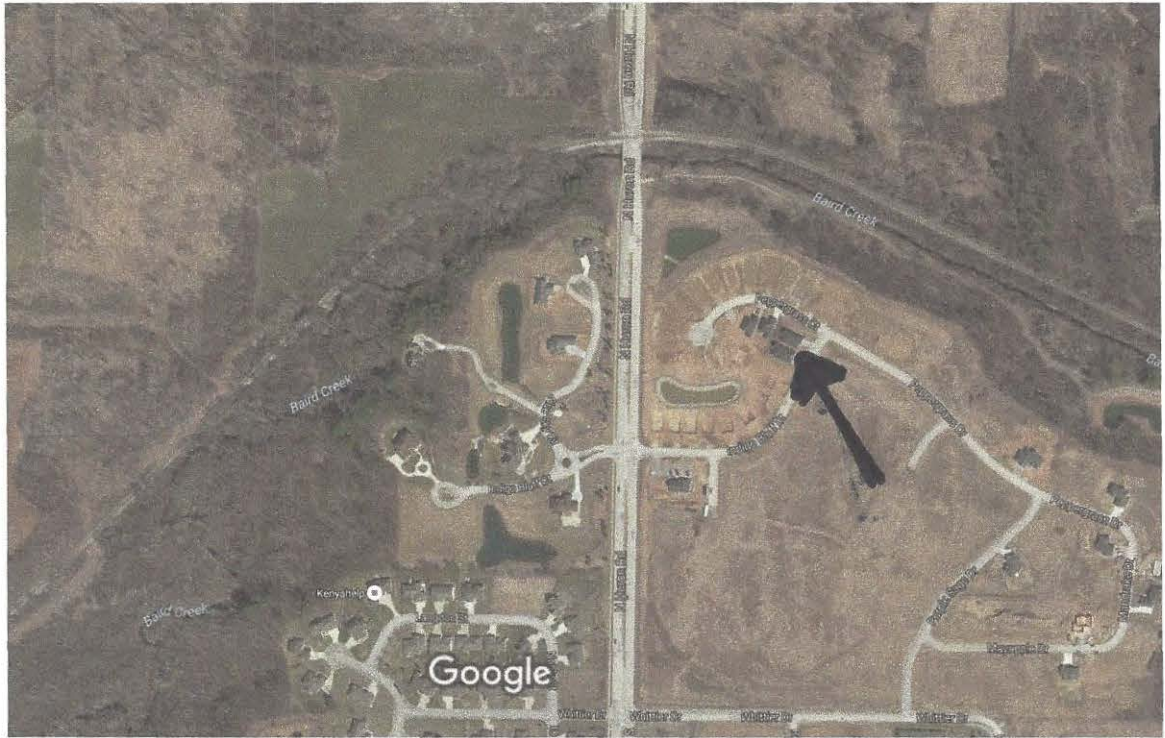
DISCLAIMER: The information shown on these maps has been obtained from various sources, and are of varying age, reliability and resolution. These maps are not intended to be used for navigation, nor are these maps an authoritative source of information about legal land ownership or public access. No warranty, expressed or implied, is made regarding accuracy, applicability for a particular use, completeness, or legality of the information depicted on this map. For more information, see the DNR Legal Notices web page: <http://dnr.wi.gov/org/legal/>

Note: Not all sites are mapped.

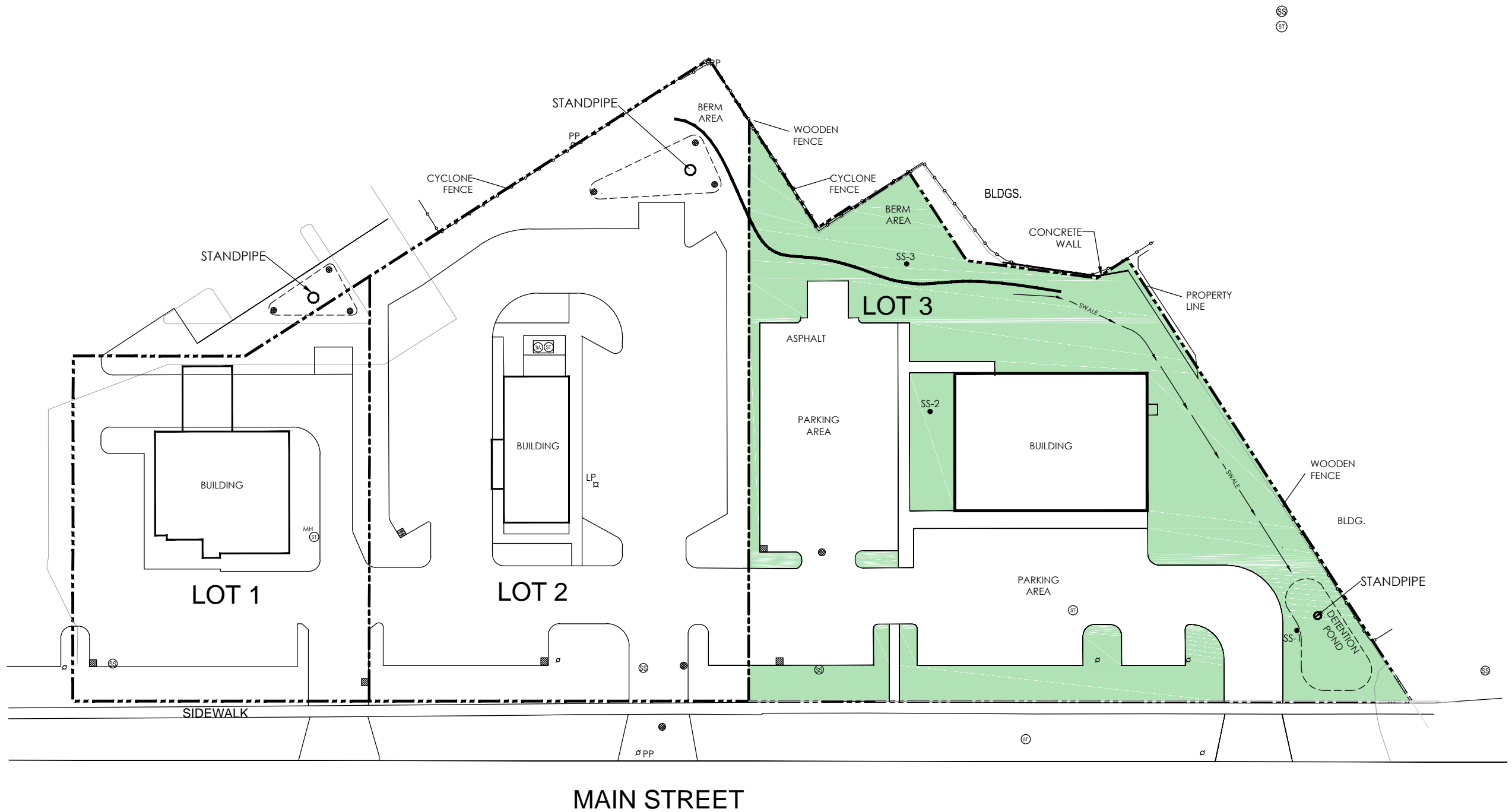
Notes



Topsoil Source



Imagery ©2016 DigitalGlobe, USDA Farm Service Agency, Map data ©2016 Google 200 ft



General Engineering Company
 P.O. Box 340 • 916 Silver Lake Dr. • Portage, WI 53901
 608-742-2169 (Office) • 608-742-2592 (Fax)
 www.generalengineering.net
This document contains confidential or proprietary information of General Engineering Company. Neither this document nor the information herein is to be reproduced, distributed, used or disclosed either in whole or in part except as specifically authorized by General Engineering Company.

TOPSOIL PLACEMENT & SAMPLING LOCATION
VLPE Site I Investigation
GB Real Estate Development, LLC
1923 Main St.
City of Green Bay
Brown County, WI

LEGEND

- SOIL SAMPLE LOCATIONS
- SOIL AREAS OF TOP SOIL PLACEMENT

0 50'
SCALE

DRAWN BY KP
 REVIEWED BY LMB
 ISSUE DATE Sept 2016
 GEC FILE NO. 2-0615-231
 SHEET NO.

FIGURE 6