



Excellence through experience™

709 Gillette St., Ste 3 ♦ La Crosse, WI 54603 ♦ 1-800-552-2932 ♦ Fax (608) 781-8893 Email: rona@metcohq.com ♦ www.metcohq.com

September 4, 2018

BRRTS #: 03-38-231379

PECFA #: 54114-7330-17

Tom Verstegen
Wisconsin Department of Natural Resources
625 E County Road Y
Oshkosh, WI 54901

Subject: Kopatz Property – Letter Report

Dear Mr. Verstegen,

Enclosed is the Letter Report for the Kopatz Property site located at W8317 County Highway P in Crivitz (Town of Beaver), Wisconsin.

Geoprobe Project Workscope

On March 29, 2018, Geiss Soil and Samples LLC, of Merrill, Wisconsin, completed one soil boring (LFS) with two soil samples collected from the soil boring for laboratory analysis. One soil sample (LFS-1) was collected at 3.5 feet bgs and was submitted for TCLP-Lead analysis. The other soil sample (LFS-2) was collected at 10 feet bgs and was submitted for TCLP-Benzene analysis.

Soil Excavation/Disposal Project Workscope

On July 8-10, 2018, DKS Construction Services, Inc. of Menomonie, Wisconsin conducted a Soil Excavation Project under the supervision and direction of METCO personnel. During the excavation project, 1,192.36 tons of petroleum-contaminated soil was excavated and hauled to the Mar-Oco Landfill in Crivitz, Wisconsin.

The excavation was conducted in the area northwest of the on-site building and included the area of the former (removed) gasoline UST and former dispenser. The excavation area consisted of two connecting rectangles, as shown on the attached Soil Excavation Map. The northern portion of the excavation area measured 42' long x 24' wide x 12' deep and the southern portion measured 30' long x 30' wide x 12' deep.

Twenty-one soil samples were collected from the sidewalls and bottom of the excavation for PVOC and Naphthalene analysis. Eight samples were collected at approximately 3 feet bgs, eight samples were collected at approximately 8 feet bgs from the sidewalls, and five bottom samples were collected at approximately 12 feet bgs. Soil sample results are presented in the attached soil analytical table.

Discussion of Soil Results

Soil Sample LFS-1: Collected at a depth of 3.5 feet bgs for landfill disposal characterization, showed 0.429 ppm Lead.

Soil Sample LFS-2: Collected at a depth of 10 feet bgs for landfill disposal characterization, showed no detects for TCLP-Benzene.

Soil Excavation sample EX-1: Collected at a depth of 3 feet bgs, showed no detects for PVOC or Naphthalene.

Soil Excavation sample EX-2: Collected at a depth of 3 feet bgs, showed no detects for PVOC or Naphthalene.

Soil Excavation sample EX-3: Collected at a depth of 12 feet bgs, showed no detects for PVOC or Naphthalene.

Soil Excavation sample EX-4: Collected at a depth of 8 feet bgs, showed detects but no NR720 exceedances for PVOC or Naphthalene.

Soil Excavation sample EX-5: Collected at a depth of 8 feet bgs, showed no detects for PVOC or Naphthalene.

Soil Excavation sample EX-6: Collected at a depth of 3 feet bgs, showed no detects for PVOC or Naphthalene.

Soil Excavation sample EX-7: Collected at a depth of 8 feet bgs, showed no detects for PVOC or Naphthalene.

Soil Excavation sample EX-8: Collected at a depth of 12 feet bgs, showed detects but no NR720 exceedances for PVOC or Naphthalene.

Soil Excavation sample EX-9: Collected at a depth of 3 feet bgs, showed no detects for PVOC or Naphthalene.

Soil Excavation sample EX-10: Collected at a depth of 8 feet bgs, showed detects but no NR720 Groundwater RCL exceedances.

Soil Excavation sample EX-11: Collected at a depth of 12 feet bgs, showed no detects for PVOC or Naphthalene.

Soil Excavation sample EX-12: Collected at a depth of 3 feet bgs, showed no detects for PVOC or Naphthalene.

Soil Excavation sample EX-13: Collected at a depth of 3 feet bgs, showed no detects for PVOC or Naphthalene.

Soil Excavation sample EX-14: Collected at a depth of 8 feet bgs, showed NR720 Groundwater RCL exceedances for Naphthalene (1.83 ppm) and Trimethylbenzenes (4.9 ppm).

Soil Excavation sample EX-15: Collected at a depth of 8 feet bgs, showed NR720 Groundwater RCL exceedances for Benzene (0.0307 ppm), Naphthalene (1.1 ppm), and Trimethylbenzenes (3.66 ppm).

Soil Excavation sample EX-16: Collected at a depth of 3 feet bgs, showed detects but no NR720 exceedances for PVOC or Naphthalene.

Soil Excavation sample EX-17: Collected at a depth of 12 feet bgs, showed an NR720 Groundwater RCL exceedance for Benzene (0.062 ppm).

Soil Excavation sample EX-18: Collected at a depth of 8 feet bgs, showed NR720 Groundwater RCL exceedances for Benzene (4.2 ppm), Ethylbenzene (29.9 ppm), Naphthalene (36 ppm), Toluene (75 ppm), Trimethylbenzenes (87.6 ppm), and Xylene (154 ppm).

Soil Excavation sample EX-19: Collected at a depth of 3 feet bgs, showed detects but no NR720 exceedances for PVOC or Naphthalene.

Soil Excavation sample EX-20: Collected at a depth of 8 feet bgs, showed detects but no NR720 exceedances for PVOC or Naphthalene.

Soil Excavation sample EX-21: Collected at a depth of 12 feet bgs, showed no detects for PVOC or Naphthalene.

Conclusions/Recommendations

A drilling project to replace monitoring wells MW-1 and MW-2 was conducted on August 27, 2018.

The 1st of 4 post-excavation groundwater monitoring events is scheduled for September 10, 2018. This will be followed by three additional quarterly rounds of post-excavation groundwater monitoring.

A Detailed Site Map, Soil Excavation Map, Soil Contamination Map, Data Tables, Waste Disposal Documents, Excavation Photos, and Laboratory Documents have been attached.

If you have any questions or comments, please feel free to call (608-781-8879) or email at jasonp@metcohq.com.

Sincerely,



Jason T. Powell
Staff Scientist

Attachments

c: Dennis Kopatz – Client

SHARED POTABLE WELL WITH W8318

W8318

W8308

W8322 COUNTY HIGHWAY P

W8318 COUNTY HIGHWAY P

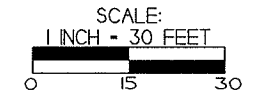
W8308 COUNTY HIGHWAY P

COUNTY HIGHWAY P

EXCAVATION AREA TO ~12 FEET BGS

ESCANABA & LAKE SUPERIOR RAILROAD

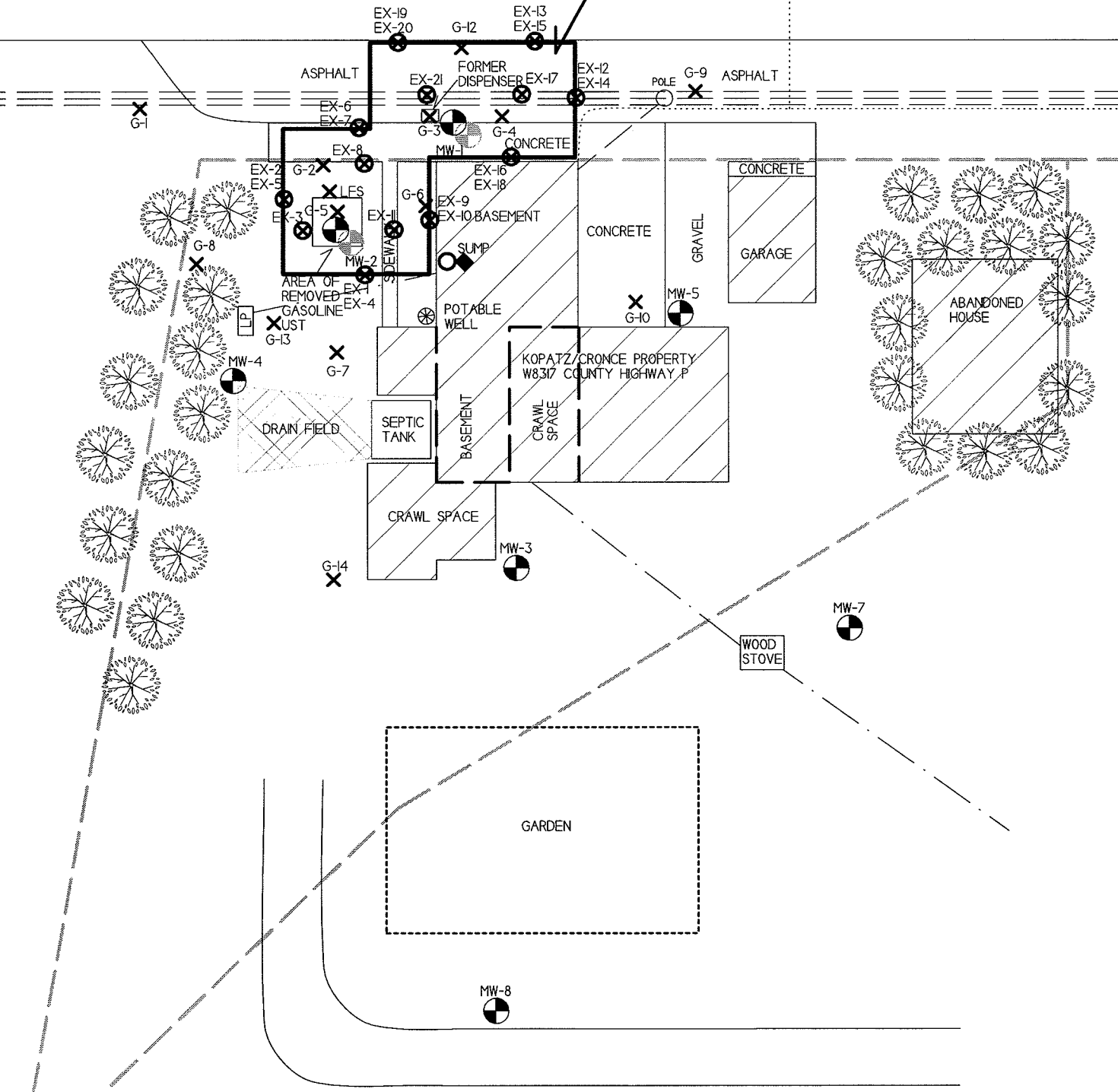
W8305 COUNTY HIGHWAY P



<p>B.I.b DETAILED SITE MAP KOPATZ/CRONCE PROPERTY</p>		
<p>709 Gillette Street, Suite 3 La Crosse, WI 54603 Tel: (608) 781-8879 Fax: (608) 781-8893</p>		
<p>METCO Excellence through experience™</p>		<p>BEAVER, WISCONSIN DRAWN BY: ED 07/13/202 UPDATED BY: ED 07/09/2013</p>

NOTE: INFORMATION BASED ON AVAILABLE DATA. ACTUAL CONDITIONS MAY DIFFER

- ◆ - INDOOR AIR SAMPLE LOCATION
- ✕ - GEOPROBE BORING LOCATION
- ⊗ - POTABLE WELL LOCATION
- ⊕ - MONITORING WELL LOCATION
- — — — — - HOT WATER LINE
- · — · — · — - GAS LINE
- - - - - - OVER-HEAD ELECTRIC LINE
- - - - - - TELEPHONE/CABLE LINE
- - - - - - PROPERTY BOUNDARY



W8305

WOOD STOVE

MW-8

MW-3

MW-7

G-14

G-7

MW-4

G-13

G-8

G-5

G-3

MW-2

G-2

G-1

G-11

G-12

G-4

G-9

G-10

G-6

G-1

G-2

G-3

G-4

G-5

G-6

G-7

G-8

G-9

G-10

G-11

G-12

G-13

G-14

MW-6

PED

MW-1

MW-2

MW-3

MW-4

MW-5

MW-6

MW-7

MW-8

MW-9

MW-10

MW-11

MW-12

MW-13

MW-14

MW-15

MW-16

MW-17

MW-18

MW-19

MW-20

MW-21

MW-22

MW-23

MW-24

MW-25

MW-26

MW-27

MW-28

MW-29

MW-30

MW-31

MW-32

MW-33

MW-34

MW-35

MW-36

MW-37

MW-38

MW-39

MW-40

MW-41

MW-42

MW-43

MW-44

MW-45

MW-46

MW-47

MW-48

MW-49

MW-50

MW-51

MW-52

MW-53

MW-54

MW-55

MW-56

MW-57

MW-58

MW-59

MW-60

MW-61

MW-62

MW-63

MW-64

MW-65

MW-66

MW-67

MW-68

MW-69

MW-70

MW-71

MW-72

MW-73

MW-74

MW-75

MW-76

MW-77

MW-78

MW-79

MW-80

MW-81

MW-82

MW-83

MW-84

MW-85

MW-86

MW-87

MW-88

MW-89

MW-90

MW-91

MW-92

MW-93

MW-94

MW-95

MW-96

MW-97

MW-98

MW-99

MW-100

MW-101

MW-102

MW-103

MW-104

MW-105

MW-106

MW-107

MW-108

MW-109

MW-110

MW-111

MW-112

MW-113

MW-114

MW-115

MW-116

MW-117

MW-118

MW-119

MW-120

MW-121

MW-122

MW-123

MW-124

MW-125

MW-126

MW-127

MW-128

MW-129

MW-130

MW-131

MW-132

MW-133

MW-134

MW-135

MW-136

MW-137

MW-138

MW-139

MW-140

MW-141

MW-142

MW-143

MW-144

MW-145

MW-146

MW-147

MW-148

MW-149

MW-150

MW-151

MW-152

MW-153

MW-154

MW-155

MW-156

MW-157

MW-158

MW-159

MW-160

MW-161

MW-162

MW-163

MW-164

MW-165

MW-166

MW-167

MW-168

MW-169

MW-170

MW-171

MW-172

MW-173

MW-174

MW-175

MW-176

MW-177

MW-178

MW-179

MW-180

MW-181

MW-182

MW-183

MW-184

MW-185

MW-186

MW-187

MW-188

MW-189

MW-190

MW-191

MW-192

MW-193

MW-194

MW-195

MW-196

MW-197

MW-198

MW-199

MW-200

MW-201

MW-202

MW-203

MW-204

MW-205

MW-206

MW-207

MW-208

MW-209

MW-210

MW-211

MW-212

MW-213

MW-214

MW-215

MW-216

MW-217

MW-218

MW-219

MW-220

MW-221

MW-222

MW-223

MW-224

MW-225

MW-226

MW-227

MW-228

MW-229

MW-230

MW-231

MW-232

MW-233

MW-234

MW-235

MW-236

MW-237

MW-238

MW-239

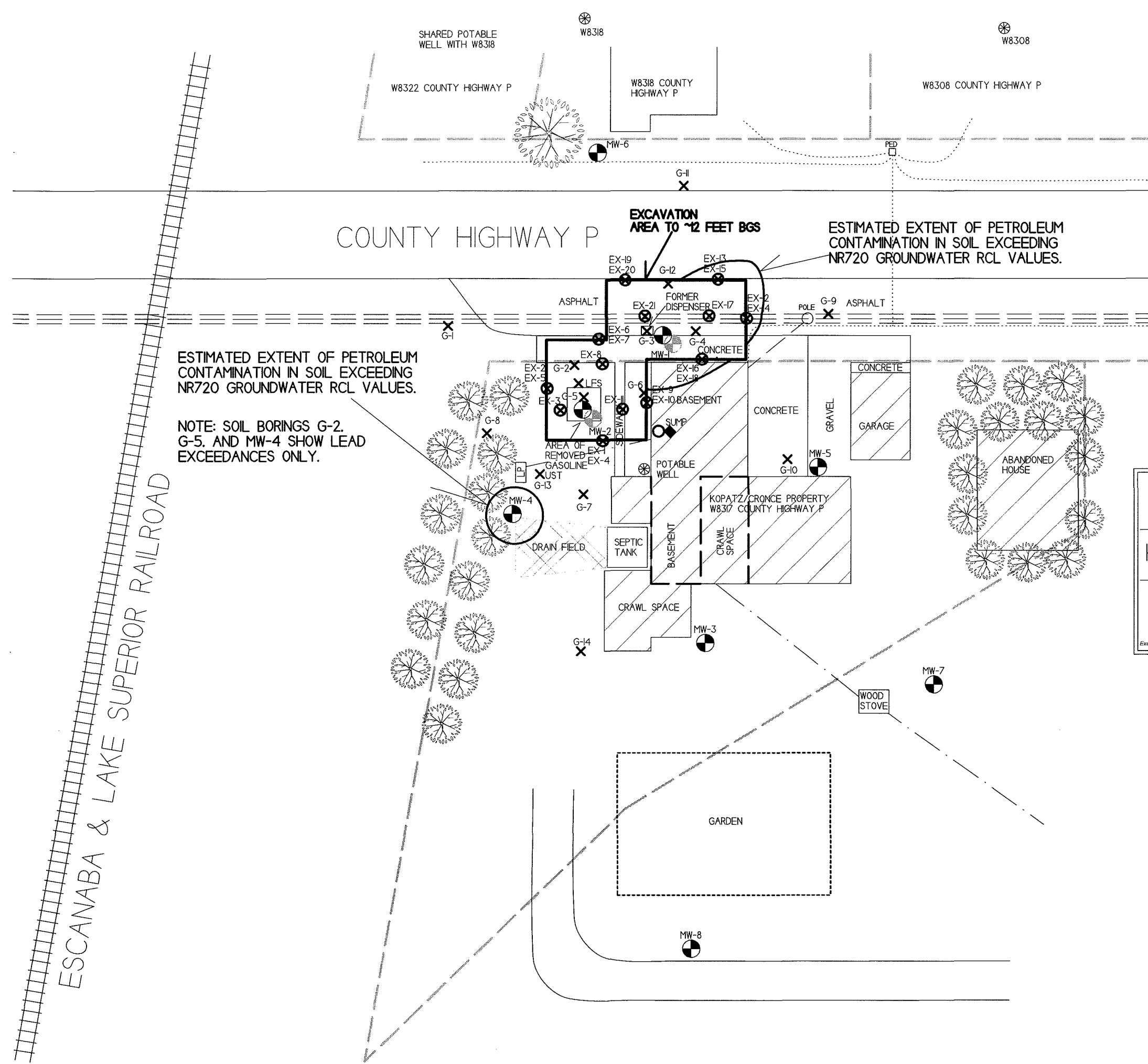
MW-240

MW-241

MW-242

MW-243

MW-244



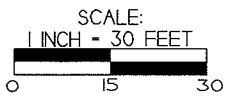
ESTIMATED EXTENT OF PETROLEUM CONTAMINATION IN SOIL EXCEEDING NR720 GROUNDWATER RCL VALUES.

NOTE: SOIL BORINGS G-2, G-5, AND MW-4 SHOW LEAD EXCEEDANCES ONLY.

EXCAVATION AREA TO ~12 FEET BGS

ESTIMATED EXTENT OF PETROLEUM CONTAMINATION IN SOIL EXCEEDING NR720 GROUNDWATER RCL VALUES.

ESCANABA & LAKE SUPERIOR RAILROAD



<h2>SOIL CONTAMINATION (POST EXCAVATION)</h2> <h3>KOPATZ/CRONCE PROPERTY</h3>		
<p>METCO 709 Gillette Street, Suite 3 La Crosse, WI 54603 Tel: (608) 781-8879 Fax: (608) 781-8893 <small>Excellence through experience.</small></p>		
<p>BEAVER, WISCONSIN</p> <p>DRAWN BY: ED 07/13/2002 UPDATED BY: ED 07/09/2003</p>		

NOTE: INFORMATION BASED ON AVAILABLE DATA. ACTUAL CONDITIONS MAY DIFFER

- ◆ - INDOOR AIR SAMPLE LOCATION
- ✕ - GEOPROBE BORING LOCATION
- ⊗ - POTABLE WELL LOCATION
- ⊕ - MONITORING WELL LOCATION
- — — — — - HOT WATER LINE
- · — · — · — - GAS LINE
- - - - - - OVERHEAD ELECTRIC LINE
- · - · - · - · - TELEPHONE/CABLE LINE
- - - - - - PROPERTY BOUNDARY

A.2. Soil Analytical Results Table
Kopatz/Cronce Property BRRTS# 03-38-231379

Sample ID	Depth (feet)	Saturation U/S	Date	PID	Lead (ppm)	DRO (ppm)	GRO (ppm)	Benzene (ppm)	Ethyl Benzene (ppm)	MTBE (ppm)	Naphthalene (ppm)	Toluene (ppm)	1,2,4-Trime-thylbenzene (ppm)	1,3,5-Trime-thylbenzene (ppm)	Xylene (Total) (ppm)	Other VOC's (ppm)	DIRECT CONTACT PVOC				
																	Exceedance Count	Hazard Index	Cumulative Cancer Risk		
G-1-1	3.5	U	04/09/13	0	1.37	NS	<10	<0.025	<0.025	<0.025	<0.025	<0.025	<0.025	<0.025	<0.075	NS	0				
G-1-2	8.0	S	04/09/13	0	NS	NS	<10	<0.025	<0.025	<0.025	<0.025	<0.025	<0.025	<0.025	<0.075	NS					
G-1-3	12.0	S	04/09/13	0	NS	NS	<10	<0.025	<0.025	<0.025	<0.025	<0.025	<0.025	<0.025	<0.075	NS					
G-2-1	3.5	U	04/09/13	0	224	NS	<10	<0.025	<0.025	<0.025	<0.025	<0.025	<0.025	<0.025	<0.075	NS	0	0.56			
G-2-2	8.0	S	04/09/13	300	NS	NS	2440	2.08	24.3	<0.250	8.9	8.5	98	40	135.7	NS					
G-2-3	12.0	S	04/09/13	20	NS	NS	<10	<0.025	0.0264	<0.025	<0.025	0.0292	0.063	0.0301	0.1381	NS					
G-3-1	3.5	U	04/09/13	0	38.4	NS	<10	<0.025	<0.025	<0.025	<0.025	<0.025	<0.025	<0.025	<0.075	NS	0				
G-3-2	8.0	U	04/09/13	200	NS	NS	3200	1.32	15.4	<0.250	15.7	18.6	199	87	287	NS					
G-4-1	3.5	U	04/09/13	0	2.54	NS	<10	<0.025	<0.025	<0.025	<0.025	<0.025	<0.025	<0.025	<0.075	NS	0				
G-4-2	8.0	U	04/09/13	350	6	NS	2490	1.17	41	<1.500	24.8	57	111	32	260	SEE VOC SPREADSHEET					
G-4-3	9.0	S	04/09/13	280	NOT SAMPLED													NS			
G-4-4	16.0	S	04/09/13	200	NS	NS	<10	<0.025	<0.025	<0.025	<0.025	<0.025	<0.025	<0.025	<0.075	NS					
G-5-1	3.5	U	04/09/13	0	180	NS	<10	<0.025	<0.025	<0.025	0.037	0.093	0.101	0.052	0.240	NS	0	0.4509	6.7E-09		
G-5-2	8.0	S	04/09/13	180	NS	NS	129	<0.250	0.259	<0.250	1.01	<0.250	2.81	2.49	3.34	NS					
G-5-3	12.0	S	04/09/13	330	NS	NS	2150	1.37	29.3	<0.250	12.4	20	68	27.8	159.1	NS					
G-6-1	3.5	U	04/09/13	0	104	NS	<10	0.064	0.038	<0.025	0.111	0.184	0.057	0.037	0.245	NS	0	0.2618	6.5E-08		
G-6-2	8.0	S	04/09/13	260	NS	NS	350	0.291	1.78	<0.250	2.96	0.271	16.7	8.6	14.98	NS					
G-6-3	12.0	S	04/09/13	320	NS	NS	1480	2.54	28.1	<0.250	18.4	68	54	22.1	147	NS					
G-7-1	3.5	U	04/09/13	0	NOT SAMPLED													NS	0		
G-7-2	8.0	S	04/09/13	0	NOT SAMPLED													NS			
G-7-3	12.0	S	04/09/13	0	NOT SAMPLED													NS			
G-8-1	3.5	U	04/09/13	0	NOT SAMPLED													NS	0		
G-8-2	8.0	S	04/09/13	0	NOT SAMPLED													NS			
G-8-3	12.0	S	04/09/13	40	NOT SAMPLED													NS			
G-9-1	3.5	U	04/09/13	0	NOT SAMPLED													NS	0		
G-9-2	8.0	U	04/09/13	0	NOT SAMPLED													NS			
G-9-3	12.0	S	04/09/13	0	NOT SAMPLED													NS			
G-10-1	3.5	U	04/09/13	0	NOT SAMPLED													NS	0		
G-10-2	8.0	U	04/09/13	100	NOT SAMPLED													NS			
G-10-3	12.0	S	04/09/13	10	NOT SAMPLED													NS			
G-11-1	3.5	U	04/09/13	0	NOT SAMPLED													NS	0		
G-11-2	8.0	S	04/09/13	0	NOT SAMPLED													NS			
G-11-3	12.0	S	04/09/13	0	NOT SAMPLED													NS			
G-12-1	3.5	U	04/09/13	0	5.35	NS	<10	<0.025	<0.025	<0.025	<0.025	<0.025	<0.025	<0.025	<0.075	NS	0				
G-12-2	8.0	U	04/09/13	20	NS	NS	<10	<0.025	<0.025	<0.025	<0.025	<0.025	<0.025	<0.025	<0.075	NS					
G-12-3	12.0	S	04/09/13	200	NS	NS	970	0.950	0.820	<0.250	2.47	2.49	5.2	11.7	9.58	NS					
G-13-1	3.5	U	04/09/13	0	NOT SAMPLED													NS	0		
G-13-2	8.0	S	04/09/13	0	NOT SAMPLED													NS			
G-13-3	12.0	S	04/09/13	0	NOT SAMPLED													NS			
G-14-1	3.5	U	04/09/13	0	NOT SAMPLED													NS	0		
G-14-2	8.0	S	04/09/13	0	NOT SAMPLED													NS			
G-14-3	12.0	S	04/09/13	0	NOT SAMPLED													NS			
Groundwater RCL					27	-	-	0.00512	1.57	0.027	0.6582	1.11	1.38		3.96	-					
Non-Industrial Direct Contact RCL					400	-	-	1.6	8.02	63.8	5.52	818	219	182	258	-		1.00E+00	1.00E-05		
Industrial Direct Contact RCL					(800)	-	-	(7.07)	(35.4)	(282)	(24.1)	(818)	(219)	(182)	(258)	-		1.00E+00	1.00E-05		
Soil Saturation Concentration (C-sat)*					-	-	-	1820*	480*	8870*	-	818*	219*	182*	258*	-					

Bold = Groundwater RCL Exceedance

Bold & Underline = Non Industrial Direct Contact RCL Exceedance

(Bold & Parentheses) = Industrial Direct Contact RCL Exceedance

Bold & Asteric * = C-sat Exceedance

Italics = Industrial Direct Contact RCL

NS = Not Sampled NM = Not Measured

(ppm) = parts per million ND = No Detects

DRO = Diesel Range Organics

GRO = Gasoline Range Organics

PID = Photoionization Detector

PVOC's = Petroleum Volatile Organic Compounds

VOC's = Volatile Organic Compounds

Note: Non-Industrial RCLs apply to this site.

U=UNSATURATED (BASED ON ALL TIME LOW WATER TABLE PER WDNR)

S=SATURATED (BASED ON ALL TIME LOW WATER TABLE PER WDNR)

A.2. Soil Analytical Results Table
 Kopatz/Cronce Property BRRS# 03-38-231379

Sample ID	Depth (feet)		Date	PID	Lead (ppm)	DRO (ppm)	GRO (ppm)	Benzene (ppm)	Ethyl Benzene (ppm)	MTBE (ppm)	Naphthalene (ppm)	Toluene (ppm)	1,2,4-Trime-thylbenzene (ppm)	1,3,5-Trime-thylbenzene (ppm)	Xylene (Total) (ppm)	Other VOC's (ppm)	DIRECT CONTACT PVOC		
																	Exeedance Count	Hazard Index	Cumulative Cancer Risk
MW-4-1	3.5	U	04/16/14	0	NOT SAMPLED											NS	0		
MW-4-2	4.5	U	04/16/14	0	40.9	NS	NS	<0.025	<0.025	<0.025	0.280	<0.025	0.078	0.119	0.047-0.097	NS			
MW-4-3	12.0	S	04/16/14	0	NOT SAMPLED											NS			
MW-5-1	3.5	U	04/16/14	0	NOT SAMPLED											NS	0		
MW-5-2	8.0	U	04/16/14	0	3.2	NS	NS	<0.025	<0.025	<0.025	<0.025	<0.025	<0.025	<0.025	<0.75	NS			
MW-5-3	12.0	S	04/16/14	0	NOT SAMPLED											NS			
MW-5-4	14.0	S	04/16/14	0	NOT SAMPLED											NS			
MW-6-1	3.5	U	04/16/14	0	NOT SAMPLED											NS	0		
MW-6-2	7.0	U	04/16/14	0	4.4	NS	NS	<0.025	<0.025	<0.025	<0.025	<0.025	<0.025	<0.025	<0.75	NS			
MW-6-3	12.0	S	04/16/14	0	NOT SAMPLED											NS			
MW-1-1	3.5	U	04/17/14	0	NOT SAMPLED											NS	0		
MW-1-2	8.0	U	04/17/14	750	NOT SAMPLED											TCLP LEAD <0.45			
MW-1-3	12.0	S	04/17/14	75	NOT SAMPLED											TCLP BENZENE <0.05			
MW-1-4	16.0	S	04/17/14	35	NS	NS	NS	0.230	0.440	<0.025	0.490	0.510	1.03	0.730	1.88	NS			
MW-1-5	20.0	S	04/17/14	220	NS	NS	NS	1.41	2.47	<0.025	2.56	4.9	6.5	2.88	13.5	NS			
MW-2-1	3.5	U	04/17/14	0	NOT SAMPLED											NS	0		
MW-2-2	8.0	S	04/17/14	1075	NOT SAMPLED											NS			
MW-2-3	12.0	S	04/17/14	40	NOT SAMPLED											NS			
MW-2-4	16.0	S	04/17/14	10	NS	NS	NS	<0.025	0.063	<0.025	0.095	0.189	0.124	0.059	0.287	NS			
MW-2-5	20.0	S	04/17/14	0	NS	NS	NS	<0.025	<0.025	<0.025	<0.025	0.081	0.044	<0.025	0.1011	NS			
MW-3-1	3.5	U	04/17/14	0	NOT SAMPLED											NS	0		
MW-3-2	8.0	S	04/17/14	0	NOT SAMPLED											NS			
MW-3-3	10.0	S	04/17/14	60	2.3	NS	NS	<0.025	0.029	<0.025	0.138	<0.025	0.036	0.083	0.61-0.91	NS			
MW-3-4	16.0	S	04/17/14	0	NOT SAMPLED											NS			
MW-7-1	3.5	U	05/18/15	0	NOT SAMPLED											NS	0		
MW-7-2	8.0	S	05/18/15	0	NOT SAMPLED											NS			
MW-7-3	12.0	S	05/18/15	0	NOT SAMPLED											NS			
MW-8-1	0-4	U	05/18/15	0	NOT SAMPLED											NS	0		
MW-8-2	4-8	S	05/18/15	0	NOT SAMPLED											NS			
MW-8-3	8-12	S	05/18/15	0	NOT SAMPLED											NS			
LFS-1	3.5	U	03/29/18	NM	NOT SAMPLED											TCLP LEAD 0.429			
LFS-2	10	S	03/29/18	NM	NOT SAMPLED											TCLP BENZENE <0.05			
Groundwater RCL					27	-	-	0.00512	1.57	0.027	0.6582	1.11	1.38	3.96	-				
Non-Industrial Direct Contact RCL					400	-	-	1.6	8.02	63.8	5.52	818	219	182	258	-		1.00E+00	1.00E-05
Industrial Direct Contact RCL					(800)	-	-	(7.07)	(35.4)	(282)	(24.1)	(818)	(219)	(182)	(258)	-		1.00E+00	1.00E-05
Soil Saturation Concentration (C-sat)*					-	-	-	1820*	480*	8870*	-	818*	219*	182*	258*	-			

Bold = Groundwater RCL Exceedance
Bold & Underline = Non Industrial Direct Contact RCL Exceedance
(Bold & Parentheses) = Industrial Direct Contact RCL Exceedance
Bold & Asteric * = C-sat Exceedance
Italics = Industrial Direct Contact RCL
 NS = Not Sampled NM = Not Measured
 (ppm) = parts per million ND = No Detects
 DRO = Diesel Range Organics
 GRO = Gasoline Range Organics
 PID = Photoionization Detector
 PVOC's = Petroleum Volatile Organic Compounds
 VOC's = Volatile Organic Compounds
Note: Non-Industrial RCLs apply to this site.

U=UNSATURATED (BASED ON ALL TIME LOW WATER TABLE PER WDNR)
 S=SATURATED (BASED ON ALL TIME LOW WATER TABLE PER WDNR)

DKS CONSTRUCTION SERVICES, INC
 2520 WILSON STREET
 MENOMONIE, WI 54751

Invoice

Date	Invoice #
7/11/2018	3479

Bill To

METCO
 Attn:Dennis Kopatz
 709 GILLETTE ST
 LACROSSE, WI 54603

P.O. No.	Terms	Project
	Net 30	

Quantity	Description	Rate	Amount
1	Mobilization	3,200.00	3,200.00 ✓
1,192.36	Excavate - Tons	3.30	3,934.79 ✓
1,192.36	Haul - Tons	20.00	23,847.20 ✓
1,192.36	Disposal - Tons	33.00	39,347.88 ✓
977.36	Fill - Tons	12.00	11,728.32 ✓
215	Rock - Tons	18.00	3,870.00 ✓
1,192.36	Backfill & Compact - Tons	2.20	2,623.19 ✓
	Jobsite: W8317 Co Hwy P, Crivitz, WI Above Work Done 7/9-7/10/2018 WI & Dunn Sales Tax	5.50%	0.00

*Soil Excavation/Disposal Project
 Reviewed 7/11/18
 OK
 [Signature]*

Phone # 715-235-2600

Total \$88,551.38 ✓

MAR-OCO LANDFILL

Detailed Gross/Tare/Net Report

Order: by Account (660) Type: Exclude Voids
For 07/09/2018

DKS Construction Services (660)

Ticket	Account	Truck	Code	Date / Time In	Date / Time Out	Gross	Tare	Net	Net Tons
37606	660		11	07/09/18 09:32:16 am	07/09/18 09:32:16 am	62,380	26,200	36,180	18.09
37607	660		11	07/09/18 09:33:30 am	07/09/18 09:46:02 am	68,340	26,920	41,420	20.71
37608	660		11	07/09/18 09:34:14 am	07/09/18 09:46:40 am	69,920	26,520	43,400	21.70
37609	660		11	07/09/18 09:41:43 am	07/09/18 09:49:15 am	81,760	29,520	52,240	26.12
37621	660		11	07/09/18 10:18:19 am	07/09/18 10:25:39 am	71,440	26,140	45,300	22.65
37633	660		11	07/09/18 10:56:55 am	07/09/18 11:11:29 am	80,440	27,360	53,080	26.54
37637	660		11	07/09/18 11:08:44 am	07/09/18 12:02:22 pm	84,880	26,660	58,220	29.11
37640	660		11	07/09/18 11:19:45 am	07/09/18 11:29:02 am	78,140	26,120	52,020	26.01
37641	660		11	07/09/18 11:20:42 am	07/09/18 11:30:31 am	78,420	29,460	48,960	24.48
37659	660		11	07/09/18 12:18:48 pm	07/09/18 12:32:33 pm	75,220	28,460	46,760	23.38
37662	660		11	07/09/18 12:27:29 pm	07/09/18 12:37:50 pm	67,280	27,440	39,840	19.92
37666	660		11	07/09/18 12:35:38 pm	07/09/18 12:45:31 pm	69,160	26,080	43,080	21.54
37667	660		11	07/09/18 12:36:22 pm	07/09/18 12:46:02 pm	71,860	26,320	45,540	22.77
37668	660		11	07/09/18 12:42:14 pm	07/09/18 12:49:15 pm	66,120	29,400	36,720	18.36
37685	660		11	07/09/18 01:48:49 pm	07/09/18 01:58:22 pm	73,020	28,380	44,640	22.32
37688	660		11	07/09/18 01:55:19 pm	07/09/18 02:05:49 pm	67,240	27,060	40,180	20.09
37691	660		11	07/09/18 02:04:45 pm	07/09/18 02:12:03 pm	64,660	26,040	38,620	19.31
37694	660		11	07/09/18 02:10:11 pm	07/09/18 02:19:39 pm	68,780	26,320	42,460	21.23
37696	660		11	07/09/18 02:17:37 pm	07/09/18 02:24:41 pm	72,000	29,300	42,700	21.35
37707	660		11	07/09/18 03:08:15 pm	07/09/18 03:16:52 pm	69,400	28,380	41,020	20.51
37708	660		11	07/09/18 03:14:11 pm	07/09/18 03:22:38 pm	73,140	27,000	46,140	23.07
37709	660		11	07/09/18 03:19:59 pm	07/09/18 03:26:50 pm	66,960	25,980	40,980	20.49
37715	660		11	07/09/18 03:29:23 pm	07/09/18 03:38:25 pm	73,300	26,220	47,080	23.54
37716	660		11	07/09/18 03:33:48 pm	07/09/18 03:40:48 pm	68,920	29,260	39,660	19.83
37719	660		11	07/09/18 04:24:11 pm	07/09/18 04:32:08 pm	72,080	28,320	43,760	21.88
37722	660		11	07/09/18 04:33:05 pm	07/09/18 04:41:12 pm	62,800	26,940	35,860	17.93
37724	660		11	07/09/18 04:40:05 pm	07/09/18 04:47:13 pm	70,860	25,920	44,940	22.47
37725	660		11	07/09/18 04:50:27 pm	07/09/18 04:58:21 pm	67,700	26,180	41,520	20.76
37726	660		11	07/09/18 04:55:21 pm	07/09/18 05:01:38 pm	72,480	29,200	43,280	21.64

DKS Construction Services (660) Totals

Loads	Units	Yards	Net	Net Tons
29	0	0.0	1,275,600	637.80

Grand Totals	Loads	Units	Yards	Net	Net Tons
	29	0	0.0	1,275,600	637.80

MAR-OCO LANDFILL

Detailed Gross/Tare/Net Report

Order: by Account (660) Type: Exclude Voids
For 07/10/2018

DKS Construction Services (660)

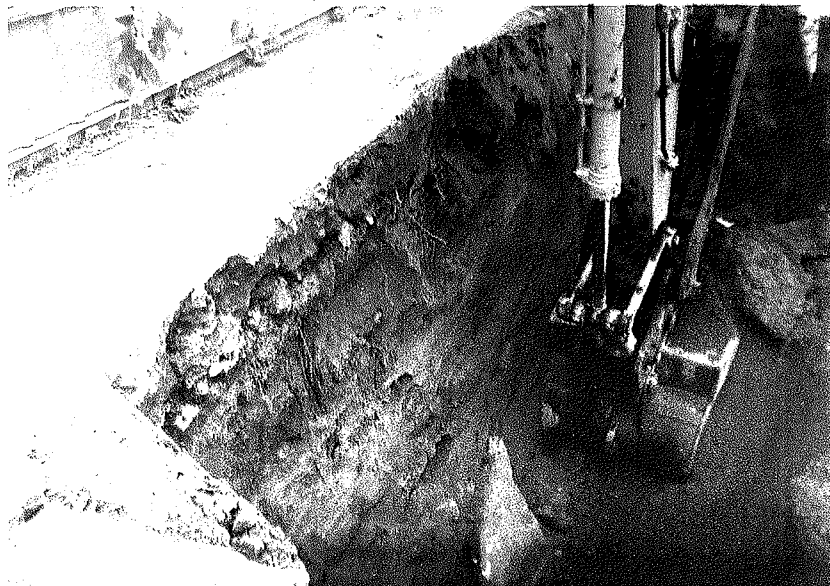
Ticket	Account	Truck	Code	Date / Time In	Date / Time Out	Gross	Tare	Net	Net Tons
37729	660		11	07/10/18 07:53:41 am	07/10/18 08:00:59 am	77,340	29,600	47,740	23.87
37732	660		11	07/10/18 07:56:13 am	07/10/18 08:00:41 am	70,580	27,280	43,300	21.65
37734	660		11	07/10/18 08:02:24 am	07/10/18 08:11:06 am	73,300	28,600	44,700	22.35
37737	660		11	07/10/18 08:07:18 am	07/10/18 08:17:58 am	66,440	26,300	40,140	20.07
37741	660		11	07/10/18 08:24:01 am	07/10/18 08:33:03 am	70,300	26,660	43,640	21.82
37755	660		11	07/10/18 09:11:38 am	07/10/18 09:19:40 am	70,220	29,520	40,700	20.35
37758	660		11	07/10/18 09:22:13 am	07/10/18 09:31:20 am	73,840	28,560	45,280	22.64
37767	660		11	07/10/18 09:37:23 am	07/10/18 09:48:19 am	67,720	26,240	41,480	20.74
37770	660		11	07/10/18 09:40:35 am	07/10/18 09:49:53 am	68,320	27,200	41,120	20.56
37772	660		11	07/10/18 09:47:17 am	07/10/18 09:57:14 am	76,040	26,640	49,400	24.70
37787	660		11	07/10/18 10:30:49 am	07/10/18 10:41:08 am	77,660	28,460	49,200	24.60
37792	660		11	07/10/18 10:54:54 am	07/10/18 11:02:19 am	74,100	29,440	44,660	22.33
37794	660		11	07/10/18 11:03:37 am	07/10/18 11:13:31 am	70,600	26,180	44,420	22.21
37797	660		11	07/10/18 11:10:11 am	07/10/18 11:18:43 am	73,220	27,160	46,060	23.03
37798	660		11	07/10/18 11:19:29 am	07/10/18 11:28:22 am	75,420	26,520	48,900	24.45
37810	660		11	07/10/18 11:52:00 am	07/10/18 12:00:48 pm	81,620	28,400	53,220	26.61
37812	660		11	07/10/18 12:06:13 pm	07/10/18 12:15:14 pm	72,540	29,420	43,120	21.56
37820	660		11	07/10/18 12:30:28 pm	07/10/18 12:41:28 pm	72,380	26,140	46,240	23.12
37821	660		11	07/10/18 12:31:28 pm	07/10/18 12:43:02 pm	71,940	27,140	44,800	22.40
37826	660		11	07/10/18 12:38:44 pm	07/10/18 12:49:10 pm	73,320	26,500	46,820	23.41
37835	660		11	07/10/18 01:09:17 pm	07/10/18 01:18:45 pm	71,660	28,360	43,300	21.65
37838	660		11	07/10/18 01:29:17 pm	07/10/18 01:37:47 pm	70,960	29,320	41,640	20.82
37842	660		11	07/10/18 01:39:59 pm	07/10/18 01:49:39 pm	71,640	26,340	45,300	22.65
37849	660		11	07/10/18 02:00:33 pm	07/10/18 02:13:38 pm	68,440	26,100	42,340	21.17
37850	660		11	07/10/18 02:04:42 pm	07/10/18 02:14:07 pm	58,680	27,080	31,600	15.80

DKS Construction Services (660) Totals

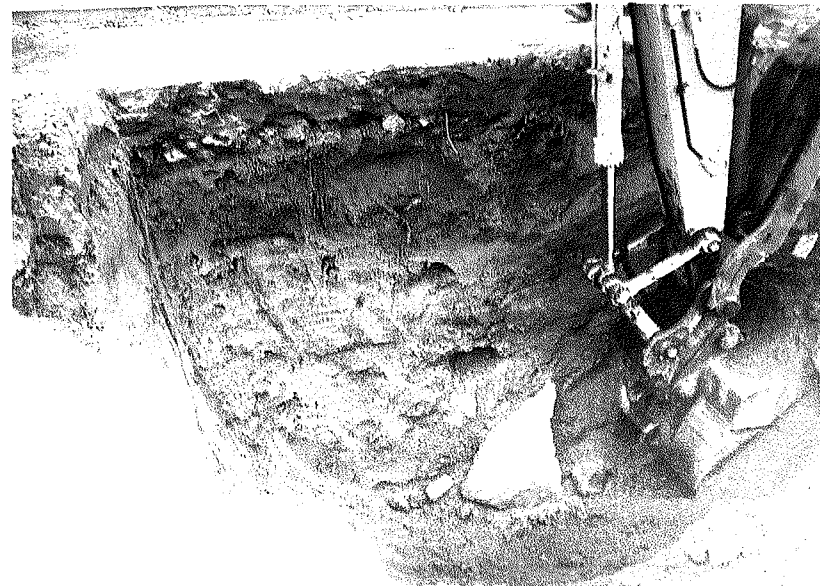
Loads	Units	Yards	Net	Net Tons
25	0	0.0	1,109,120	554.56

Grand Totals	Loads	Units	Yards	Net	Net Tons
	25	0	0.0	1,109,120	554.56

Excavation Sidewall Facing Southwest



Excavation Sidewall Facing South



Excavation Sidewall Facing West



Backfilling of Excavation Area Facing West

Post Excavation Facing West



Post Excavation Facing South



Synergy Environmental Lab,

1990 Prospect Ct., Appleton, WI 54914 *P 920-830-2455 * F 920-733-0631

DENNIS KOPATZ
 DENNIS KOPATZ
 N4510 SCHACT ROAD
 MARINETTE, WI 54143

Report Date 10-Apr-18

Project Name KOPATZ PROPERTY
 Project #

Invoice # E34428

Lab Code 5034428A
 Sample ID LFS-1
 Sample Matrix Soil
 Sample Date 3/29/2018

	Result	Unit	LOD	LOQ	Dil	Method	Ext Date	Run Date	Analyst	Code
Inorganic Metals TCLP Lead	0.429	mg/l			0.1 1	6010B		4/6/2018	ESC	1

Lab Code 5034428B
 Sample ID LFS-2
 Sample Matrix Soil
 Sample Date 3/29/2018

	Result	Unit	LOD	LOQ	Dil	Method	Ext Date	Run Date	Analyst	Code
Organic TCLP TCLP Benzene	< 0.05	mg/l	0.05		1	8260B		4/6/2018	ESC	1

"J" Flag: Analyte detected between LOD and LOQ LOD Limit of Detection LOQ Limit of Quantitation

Code Comment

1 Laboratory QC within limits.

ESC denotes sub contract lab - Certification #998093910

All solid sample results reported on a dry weight basis unless otherwise indicated. All LOD's and LOQ's are adjusted for dilutions but not dry weight. Subcontracted results are denoted by SUB in the analyst field.

Authorized Signature

Michael Ricker

CHAIN OF STUDY RECORD

Synergy

Environmental Lab, Inc.

Chain # No 3387

Page 1 of 1

Lab I.D. #
Account No. : Quote No.:
Project #:
Sampler: (signature) <i>[Signature]</i>

1990 Prospect Ct. • Appleton, WI 54914
920-830-2455 • FAX 920-733-0631

Sample Handling Request
Rush Analysis Date Required _____ (Rushes accepted only with prior authorization)
<input checked="" type="checkbox"/> Normal Turn Around

Project (Name / Location): <i>Kopatz Property</i>	
Reports To: <i>Dennis Kopatz</i>	Invoice To: <i>Dennis Kopatz</i>
Company	Company <i>C/o Metco</i>
Address <i>W8317 Cty Rd P</i>	Address
City State Zip <i>CADIZ WI 54114</i>	City State Zip
Phone	Phone
FAX <i>Copy Metco</i>	FAX

Analysis Requested												Other Analysis			
DRO (Mod DRO Sep 95)	GRO (Mod GRO Sep 95)	LEAD	NITRATE/NITRITE	OIL & GREASE	PAH (EPA 8270)	PCB	PVOC (EPA 8021)	PVOC + NAPHTHALENE	SULFATE	TOTAL SUSPENDED SOLIDS	VOC DW (EPA 524.2)	VOC (EPA 8260)	8-PCRA METALS	PID/FID	
														<i>X</i>	<i>X</i>

Lab I.D.	Sample I.D.	Collection Date Time	Comp	Grab	Filtered Y/N	No. of Containers	Sample Type (Matrix)*	Preservation
<i>603423</i>	<i>A LFS-1</i>	<i>7/21/18 10:40</i>		<i>X</i>		<i>1</i>	<i>S</i>	<i>-</i>
	<i>B LFS-2</i>	<i>7/21/18 10:40</i>		<i>X</i>		<i>2</i>	<i>S</i>	<i>-</i>

Comments/Special Instructions (*Specify groundwater "GW", Drinking Water "DW", Waste Water "WW", Soil "S", Air "A", Oil, Sludge etc.)

Sample Integrity - To be completed by receiving lab. Method of Shipment: <i>GR</i> Temp. of Temp. Blank: _____ °C On Ice: <input checked="" type="checkbox"/> Cooler seal intact upon receipt: <input checked="" type="checkbox"/> Yes <input type="checkbox"/> No	Relinquished By: (sign) _____	Time _____	Date _____	Received By: (sign) _____	Time _____	Date _____
	Received in Laboratory By: <i>[Signature]</i>			Time: <i>8:00</i>	Date: <i>3/30/18</i>	

Synergy Environmental Lab,

1990 Prospect Ct., Appleton, WI 54914 *P 920-830-2455 * F 920-733-0631

DENNIS KOPATZ
 DENNIS KOPATZ
 N4510 SCHACT ROAD
 MARINETTE, WI 54143

Report Date 25-Jul-18

Project Name KOPATZ PROPERTY
 Project #

Invoice # E34914

Lab Code 5034914A
 Sample ID EX-1
 Sample Matrix Soil
 Sample Date 7/9/2018

	Result	Unit	LOD	LOQ	Dil	Method	Ext Date	Run Date	Analyst	Code
General										
General										
Solids Percent	89.3	%			1	5021		7/12/2018	MJR	1
Organic										
PVOC + Naphthalene										
Benzene	< 0.025	mg/kg	0.0095	0.03	1	GRO95/8021		7/21/2018	CJR	1
Ethylbenzene	< 0.025	mg/kg	0.016	0.05	1	GRO95/8021		7/21/2018	CJR	1
Methyl tert-butyl ether (MTBE)	< 0.025	mg/kg	0.011	0.034	1	GRO95/8021		7/21/2018	CJR	1
Naphthalene	< 0.025	mg/kg	0.022	0.07	1	GRO95/8021		7/21/2018	CJR	1
Toluene	< 0.025	mg/kg	0.013	0.041	1	GRO95/8021		7/21/2018	CJR	1
1,2,4-Trimethylbenzene	< 0.025	mg/kg	0.019	0.06	1	GRO95/8021		7/21/2018	CJR	1
1,3,5-Trimethylbenzene	< 0.025	mg/kg	0.0096	0.031	1	GRO95/8021		7/21/2018	CJR	1
m&p-Xylene	< 0.05	mg/kg	0.013	0.042	1	GRO95/8021		7/21/2018	CJR	1
o-Xylene	< 0.025	mg/kg	0.0062	0.02	1	GRO95/8021		7/21/2018	CJR	1

Project Name KOPATZ PROPERTY
 Project #

Invoice # E34914

Lab Code 5034914B
 Sample ID EX-2
 Sample Matrix Soil
 Sample Date 7/9/2018

	Result	Unit	LOD	LOQ	Dil	Method	Ext Date	Run Date	Analyst	Code
General										
General										
Solids Percent	91.1	%			1	5021		7/12/2018	MJR	1
Organic										
PVOC + Naphthalene										
Benzene	< 0.025	mg/kg	0.0095	0.03	1	GRO95/8021		7/21/2018	CJR	1
Ethylbenzene	< 0.025	mg/kg	0.016	0.05	1	GRO95/8021		7/21/2018	CJR	1
Methyl tert-butyl ether (MTBE)	< 0.025	mg/kg	0.011	0.034	1	GRO95/8021		7/21/2018	CJR	1
Naphthalene	< 0.025	mg/kg	0.022	0.07	1	GRO95/8021		7/21/2018	CJR	1
Toluene	< 0.025	mg/kg	0.013	0.041	1	GRO95/8021		7/21/2018	CJR	1
1,2,4-Trimethylbenzene	< 0.025	mg/kg	0.019	0.06	1	GRO95/8021		7/21/2018	CJR	1
1,3,5-Trimethylbenzene	< 0.025	mg/kg	0.0096	0.031	1	GRO95/8021		7/21/2018	CJR	1
m&p-Xylene	< 0.05	mg/kg	0.013	0.042	1	GRO95/8021		7/21/2018	CJR	1
o-Xylene	< 0.025	mg/kg	0.0062	0.02	1	GRO95/8021		7/21/2018	CJR	1

Lab Code 5034914C
 Sample ID EX-3
 Sample Matrix Soil
 Sample Date 7/9/2018

	Result	Unit	LOD	LOQ	Dil	Method	Ext Date	Run Date	Analyst	Code
General										
General										
Solids Percent	90.5	%			1	5021		7/12/2018	MJR	1
Organic										
PVOC + Naphthalene										
Benzene	< 0.025	mg/kg	0.0095	0.03	1	GRO95/8021		7/21/2018	CJR	1
Ethylbenzene	< 0.025	mg/kg	0.016	0.05	1	GRO95/8021		7/21/2018	CJR	1
Methyl tert-butyl ether (MTBE)	< 0.025	mg/kg	0.011	0.034	1	GRO95/8021		7/21/2018	CJR	1
Naphthalene	< 0.025	mg/kg	0.022	0.07	1	GRO95/8021		7/21/2018	CJR	1
Toluene	< 0.025	mg/kg	0.013	0.041	1	GRO95/8021		7/21/2018	CJR	1
1,2,4-Trimethylbenzene	< 0.025	mg/kg	0.019	0.06	1	GRO95/8021		7/21/2018	CJR	1
1,3,5-Trimethylbenzene	< 0.025	mg/kg	0.0096	0.031	1	GRO95/8021		7/21/2018	CJR	1
m&p-Xylene	< 0.05	mg/kg	0.013	0.042	1	GRO95/8021		7/21/2018	CJR	1
o-Xylene	< 0.025	mg/kg	0.0062	0.02	1	GRO95/8021		7/21/2018	CJR	1

Project #

Lab Code 5034914D
 Sample ID EX-4
 Sample Matrix Soil
 Sample Date 7/9/2018

	Result	Unit	LOD	LOQ	Dil	Method	Ext Date	Run Date	Analyst	Code
General										
General										
Solids Percent	89.4	%			1	5021		7/12/2018	MJR	1
Organic										
PVOC + Naphthalene										
Benzene	< 0.025	mg/kg	0.0095	0.03	1	GRO95/8021		7/21/2018	CJR	1
Ethylbenzene	0.162	mg/kg	0.016	0.05	1	GRO95/8021		7/21/2018	CJR	1
Methyl tert-butyl ether (MTBE)	< 0.025	mg/kg	0.011	0.034	1	GRO95/8021		7/21/2018	CJR	1
Naphthalene	0.183	mg/kg	0.022	0.07	1	GRO95/8021		7/21/2018	CJR	1
Toluene	0.227	mg/kg	0.013	0.041	1	GRO95/8021		7/21/2018	CJR	1
1,2,4-Trimethylbenzene	0.57	mg/kg	0.019	0.06	1	GRO95/8021		7/21/2018	CJR	1
1,3,5-Trimethylbenzene	0.194	mg/kg	0.0096	0.031	1	GRO95/8021		7/21/2018	CJR	1
m&p-Xylene	0.74	mg/kg	0.013	0.042	1	GRO95/8021		7/21/2018	CJR	1
o-Xylene	0.212	mg/kg	0.0062	0.02	1	GRO95/8021		7/21/2018	CJR	1

Lab Code 5034914E
 Sample ID EX-5
 Sample Matrix Soil
 Sample Date 7/9/2018

	Result	Unit	LOD	LOQ	Dil	Method	Ext Date	Run Date	Analyst	Code
General										
General										
Solids Percent	89.0	%			1	5021		7/12/2018	MJR	1
Organic										
PVOC + Naphthalene										
Benzene	< 0.025	mg/kg	0.0095	0.03	1	GRO95/8021		7/21/2018	CJR	1
Ethylbenzene	< 0.025	mg/kg	0.016	0.05	1	GRO95/8021		7/21/2018	CJR	1
Methyl tert-butyl ether (MTBE)	< 0.025	mg/kg	0.011	0.034	1	GRO95/8021		7/21/2018	CJR	1
Naphthalene	< 0.025	mg/kg	0.022	0.07	1	GRO95/8021		7/21/2018	CJR	1
Toluene	< 0.025	mg/kg	0.013	0.041	1	GRO95/8021		7/21/2018	CJR	1
1,2,4-Trimethylbenzene	< 0.025	mg/kg	0.019	0.06	1	GRO95/8021		7/21/2018	CJR	1
1,3,5-Trimethylbenzene	< 0.025	mg/kg	0.0096	0.031	1	GRO95/8021		7/21/2018	CJR	1
m&p-Xylene	< 0.05	mg/kg	0.013	0.042	1	GRO95/8021		7/21/2018	CJR	1
o-Xylene	< 0.025	mg/kg	0.0062	0.02	1	GRO95/8021		7/21/2018	CJR	1

Project #

Lab Code 5034914F
 Sample ID EX-6
 Sample Matrix Soil
 Sample Date 7/9/2018

	Result	Unit	LOD	LOQ	Dil	Method	Ext Date	Run Date	Analyst	Code
General										
General										
Solids Percent	83.4	%			1	5021		7/12/2018	MJR	1
Organic										
PVOC + Naphthalene										
Benzene	< 0.025	mg/kg	0.0095	0.03	1	GRO95/8021		7/23/2018	CJR	1
Ethylbenzene	< 0.025	mg/kg	0.016	0.05	1	GRO95/8021		7/23/2018	CJR	1
Methyl tert-butyl ether (MTBE)	< 0.025	mg/kg	0.011	0.034	1	GRO95/8021		7/23/2018	CJR	1
Naphthalene	< 0.025	mg/kg	0.022	0.07	1	GRO95/8021		7/23/2018	CJR	1
Toluene	< 0.025	mg/kg	0.013	0.041	1	GRO95/8021		7/23/2018	CJR	1
1,2,4-Trimethylbenzene	< 0.025	mg/kg	0.019	0.06	1	GRO95/8021		7/23/2018	CJR	1
1,3,5-Trimethylbenzene	< 0.025	mg/kg	0.0096	0.031	1	GRO95/8021		7/23/2018	CJR	1
m&p-Xylene	< 0.05	mg/kg	0.013	0.042	1	GRO95/8021		7/23/2018	CJR	1
o-Xylene	< 0.025	mg/kg	0.0062	0.02	1	GRO95/8021		7/23/2018	CJR	1

Lab Code 5034914G
 Sample ID EX-7
 Sample Matrix Soil
 Sample Date 7/9/2018

	Result	Unit	LOD	LOQ	Dil	Method	Ext Date	Run Date	Analyst	Code
General										
General										
Solids Percent	87.5	%			1	5021		7/12/2018	MJR	1
Organic										
PVOC + Naphthalene										
Benzene	< 0.025	mg/kg	0.0095	0.03	1	GRO95/8021		7/23/2018	CJR	1
Ethylbenzene	< 0.025	mg/kg	0.016	0.05	1	GRO95/8021		7/23/2018	CJR	1
Methyl tert-butyl ether (MTBE)	< 0.025	mg/kg	0.011	0.034	1	GRO95/8021		7/23/2018	CJR	1
Naphthalene	< 0.025	mg/kg	0.022	0.07	1	GRO95/8021		7/23/2018	CJR	1
Toluene	< 0.025	mg/kg	0.013	0.041	1	GRO95/8021		7/23/2018	CJR	1
1,2,4-Trimethylbenzene	< 0.025	mg/kg	0.019	0.06	1	GRO95/8021		7/23/2018	CJR	1
1,3,5-Trimethylbenzene	< 0.025	mg/kg	0.0096	0.031	1	GRO95/8021		7/23/2018	CJR	1
m&p-Xylene	< 0.05	mg/kg	0.013	0.042	1	GRO95/8021		7/23/2018	CJR	1
o-Xylene	< 0.025	mg/kg	0.0062	0.02	1	GRO95/8021		7/23/2018	CJR	1

Project #

Lab Code 5034914H
 Sample ID EX-8
 Sample Matrix Soil
 Sample Date 7/9/2018

	Result	Unit	LOD	LOQ	Dil	Method	Ext Date	Run Date	Analyst	Code
General										
General										
Solids Percent	90.4	%			1	5021		7/12/2018	MJR	1
Organic										
PVOC + Naphthalene										
Benzene	< 0.025	mg/kg	0.0095	0.03	1	GRO95/8021		7/23/2018	CJR	1
Ethylbenzene	< 0.025	mg/kg	0.016	0.05	1	GRO95/8021		7/23/2018	CJR	1
Methyl tert-butyl ether (MTBE)	< 0.025	mg/kg	0.011	0.034	1	GRO95/8021		7/23/2018	CJR	1
Naphthalene	< 0.025	mg/kg	0.022	0.07	1	GRO95/8021		7/23/2018	CJR	1
Toluene	< 0.025	mg/kg	0.013	0.041	1	GRO95/8021		7/23/2018	CJR	1
1,2,4-Trimethylbenzene	0.106	mg/kg	0.019	0.06	1	GRO95/8021		7/23/2018	CJR	1
1,3,5-Trimethylbenzene	0.047	mg/kg	0.0096	0.031	1	GRO95/8021		7/23/2018	CJR	1
m&p-Xylene	0.077	mg/kg	0.013	0.042	1	GRO95/8021		7/23/2018	CJR	1
o-Xylene	0.0304	mg/kg	0.0062	0.02	1	GRO95/8021		7/23/2018	CJR	1

Lab Code 5034914I
 Sample ID EX-9
 Sample Matrix Soil
 Sample Date 7/9/2018

	Result	Unit	LOD	LOQ	Dil	Method	Ext Date	Run Date	Analyst	Code
General										
General										
Solids Percent	88.1	%			1	5021		7/12/2018	MJR	1
Organic										
PVOC + Naphthalene										
Benzene	< 0.025	mg/kg	0.0095	0.03	1	GRO95/8021		7/24/2018	CJR	1
Ethylbenzene	< 0.025	mg/kg	0.016	0.05	1	GRO95/8021		7/24/2018	CJR	1
Methyl tert-butyl ether (MTBE)	< 0.025	mg/kg	0.011	0.034	1	GRO95/8021		7/24/2018	CJR	1
Naphthalene	0.099	mg/kg	0.022	0.07	1	GRO95/8021		7/24/2018	CJR	1
Toluene	< 0.025	mg/kg	0.013	0.041	1	GRO95/8021		7/24/2018	CJR	1
1,2,4-Trimethylbenzene	< 0.025	mg/kg	0.019	0.06	1	GRO95/8021		7/24/2018	CJR	1
1,3,5-Trimethylbenzene	< 0.025	mg/kg	0.0096	0.031	1	GRO95/8021		7/24/2018	CJR	1
m&p-Xylene	< 0.05	mg/kg	0.013	0.042	1	GRO95/8021		7/24/2018	CJR	1
o-Xylene	< 0.025	mg/kg	0.0062	0.02	1	GRO95/8021		7/24/2018	CJR	1

Project #

Lab Code 5034914J
 Sample ID EX-10
 Sample Matrix Soil
 Sample Date 7/9/2018

	Result	Unit	LOD	LOQ	Dil	Method	Ext Date	Run Date	Analyst	Code
General										
General										
Solids Percent	89.4	%			1	5021		7/12/2018	MJR	1
Organic										
PVOC + Naphthalene										
Benzene	< 0.025	mg/kg	0.0095	0.03	1	GRO95/8021		7/24/2018	CJR	1
Ethylbenzene	< 0.025	mg/kg	0.016	0.05	1	GRO95/8021		7/24/2018	CJR	1
Methyl tert-butyl ether (MTBE)	< 0.025	mg/kg	0.011	0.034	1	GRO95/8021		7/24/2018	CJR	1
Naphthalene	0.101	mg/kg	0.022	0.07	1	GRO95/8021		7/24/2018	CJR	1
Toluene	0.0314 "J"	mg/kg	0.013	0.041	1	GRO95/8021		7/24/2018	CJR	1
1,2,4-Trimethylbenzene	0.055 "J"	mg/kg	0.019	0.06	1	GRO95/8021		7/24/2018	CJR	1
1,3,5-Trimethylbenzene	0.072	mg/kg	0.0096	0.031	1	GRO95/8021		7/24/2018	CJR	1
m&p-Xylene	< 0.05	mg/kg	0.013	0.042	1	GRO95/8021		7/24/2018	CJR	1
o-Xylene	< 0.025	mg/kg	0.0062	0.02	1	GRO95/8021		7/24/2018	CJR	1

Lab Code 5034914K
 Sample ID EX-11
 Sample Matrix Soil
 Sample Date 7/9/2018

	Result	Unit	LOD	LOQ	Dil	Method	Ext Date	Run Date	Analyst	Code
General										
General										
Solids Percent	93.9	%			1	5021		7/12/2018	MJR	1
Organic										
PVOC + Naphthalene										
Benzene	< 0.025	mg/kg	0.0095	0.03	1	GRO95/8021		7/24/2018	CJR	1
Ethylbenzene	< 0.025	mg/kg	0.016	0.05	1	GRO95/8021		7/24/2018	CJR	1
Methyl tert-butyl ether (MTBE)	< 0.025	mg/kg	0.011	0.034	1	GRO95/8021		7/24/2018	CJR	1
Naphthalene	< 0.025	mg/kg	0.022	0.07	1	GRO95/8021		7/24/2018	CJR	1
Toluene	< 0.025	mg/kg	0.013	0.041	1	GRO95/8021		7/24/2018	CJR	1
1,2,4-Trimethylbenzene	< 0.025	mg/kg	0.019	0.06	1	GRO95/8021		7/24/2018	CJR	1
1,3,5-Trimethylbenzene	< 0.025	mg/kg	0.0096	0.031	1	GRO95/8021		7/24/2018	CJR	1
m&p-Xylene	< 0.05	mg/kg	0.013	0.042	1	GRO95/8021		7/24/2018	CJR	1
o-Xylene	< 0.025	mg/kg	0.0062	0.02	1	GRO95/8021		7/24/2018	CJR	1

Project #

Lab Code 5034914L
 Sample ID EX-12
 Sample Matrix Soil
 Sample Date 7/10/2018

	Result	Unit	LOD	LOQ	Dil	Method	Ext Date	Run Date	Analyst	Code
General										
General										
Solids Percent	95.4	%			1	5021		7/12/2018	MJR	1
Organic										
PVOC + Naphthalene										
Benzene	< 0.025	mg/kg	0.0095	0.03	1	GRO95/8021		7/24/2018	CJR	1
Ethylbenzene	< 0.025	mg/kg	0.016	0.05	1	GRO95/8021		7/24/2018	CJR	1
Methyl tert-butyl ether (MTBE)	< 0.025	mg/kg	0.011	0.034	1	GRO95/8021		7/24/2018	CJR	1
Naphthalene	< 0.025	mg/kg	0.022	0.07	1	GRO95/8021		7/24/2018	CJR	1
Toluene	< 0.025	mg/kg	0.013	0.041	1	GRO95/8021		7/24/2018	CJR	1
1,2,4-Trimethylbenzene	< 0.025	mg/kg	0.019	0.06	1	GRO95/8021		7/24/2018	CJR	1
1,3,5-Trimethylbenzene	< 0.025	mg/kg	0.0096	0.031	1	GRO95/8021		7/24/2018	CJR	1
m&p-Xylene	< 0.05	mg/kg	0.013	0.042	1	GRO95/8021		7/24/2018	CJR	1
o-Xylene	< 0.025	mg/kg	0.0062	0.02	1	GRO95/8021		7/24/2018	CJR	1

Lab Code 5034914M
 Sample ID EX-13
 Sample Matrix Soil
 Sample Date 7/10/2018

	Result	Unit	LOD	LOQ	Dil	Method	Ext Date	Run Date	Analyst	Code
General										
General										
Solids Percent	95.0	%			1	5021		7/12/2018	MJR	1
Organic										
PVOC + Naphthalene										
Benzene	< 0.025	mg/kg	0.0095	0.03	1	GRO95/8021		7/24/2018	CJR	1
Ethylbenzene	< 0.025	mg/kg	0.016	0.05	1	GRO95/8021		7/24/2018	CJR	1
Methyl tert-butyl ether (MTBE)	< 0.025	mg/kg	0.011	0.034	1	GRO95/8021		7/24/2018	CJR	1
Naphthalene	< 0.025	mg/kg	0.022	0.07	1	GRO95/8021		7/24/2018	CJR	1
Toluene	< 0.025	mg/kg	0.013	0.041	1	GRO95/8021		7/24/2018	CJR	1
1,2,4-Trimethylbenzene	< 0.025	mg/kg	0.019	0.06	1	GRO95/8021		7/24/2018	CJR	1
1,3,5-Trimethylbenzene	< 0.025	mg/kg	0.0096	0.031	1	GRO95/8021		7/24/2018	CJR	1
m&p-Xylene	< 0.05	mg/kg	0.013	0.042	1	GRO95/8021		7/24/2018	CJR	1
o-Xylene	< 0.025	mg/kg	0.0062	0.02	1	GRO95/8021		7/24/2018	CJR	1

Project #

Lab Code 5034914N
 Sample ID EX-14
 Sample Matrix Soil
 Sample Date 7/10/2018

	Result	Unit	LOD	LOQ	Dil	Method	Ext Date	Run Date	Analyst	Code
General										
General										
Solids Percent	90.8	%			1	5021		7/12/2018	MJR	1
Organic										
PVOC + Naphthalene										
Benzene	< 0.25	mg/kg	0.095	0.3	10	GRO95/8021		7/24/2018	CJR	1
Ethylbenzene	0.54	mg/kg	0.16	0.5	10	GRO95/8021		7/24/2018	CJR	1
Methyl tert-butyl ether (MTBE)	< 0.25	mg/kg	0.11	0.34	10	GRO95/8021		7/24/2018	CJR	1
Naphthalene	1.83	mg/kg	0.22	0.7	10	GRO95/8021		7/24/2018	CJR	1
Toluene	0.285 "J"	mg/kg	0.13	0.41	10	GRO95/8021		7/24/2018	CJR	1
1,2,4-Trimethylbenzene	3.3	mg/kg	0.19	0.6	10	GRO95/8021		7/24/2018	CJR	1
1,3,5-Trimethylbenzene	1.6	mg/kg	0.096	0.31	10	GRO95/8021		7/24/2018	CJR	1
m&p-Xylene	1.82	mg/kg	0.13	0.42	10	GRO95/8021		7/24/2018	CJR	1
o-Xylene	0.78	mg/kg	0.062	0.2	10	GRO95/8021		7/24/2018	CJR	1

Lab Code 5034914O
 Sample ID EX-15
 Sample Matrix Soil
 Sample Date 7/10/2018

	Result	Unit	LOD	LOQ	Dil	Method	Ext Date	Run Date	Analyst	Code
General										
General										
Solids Percent	90.2	%			1	5021		7/12/2018	MJR	1
Organic										
PVOC + Naphthalene										
Benzene	0.0307	mg/kg	0.0095	0.03	1	GRO95/8021		7/24/2018	CJR	1
Ethylbenzene	0.293	mg/kg	0.016	0.05	1	GRO95/8021		7/24/2018	CJR	1
Methyl tert-butyl ether (MTBE)	< 0.025	mg/kg	0.011	0.034	1	GRO95/8021		7/24/2018	CJR	1
Naphthalene	1.1	mg/kg	0.022	0.07	1	GRO95/8021		7/24/2018	CJR	1
Toluene	0.248	mg/kg	0.013	0.041	1	GRO95/8021		7/24/2018	CJR	1
1,2,4-Trimethylbenzene	2.29	mg/kg	0.019	0.06	1	GRO95/8021		7/24/2018	CJR	1
1,3,5-Trimethylbenzene	1.37	mg/kg	0.0096	0.031	1	GRO95/8021		7/24/2018	CJR	1
m&p-Xylene	1.61	mg/kg	0.013	0.042	1	GRO95/8021		7/24/2018	CJR	1
o-Xylene	0.47	mg/kg	0.0062	0.02	1	GRO95/8021		7/24/2018	CJR	1

Project #

Lab Code 5034914P
 Sample ID EX-16
 Sample Matrix Soil
 Sample Date 7/10/2018

	Result	Unit	LOD	LOQ	Dil	Method	Ext Date	Run Date	Analyst	Code
General										
General										
Solids Percent	92.3	%			1	5021		7/12/2018	MJR	1
Organic										
PVOC + Naphthalene										
Benzene	< 0.025	mg/kg	0.0095	0.03	1	GRO95/8021		7/24/2018	CJR	1
Ethylbenzene	< 0.025	mg/kg	0.016	0.05	1	GRO95/8021		7/24/2018	CJR	1
Methyl tert-butyl ether (MTBE)	< 0.025	mg/kg	0.011	0.034	1	GRO95/8021		7/24/2018	CJR	1
Naphthalene	0.033 "J"	mg/kg	0.022	0.07	1	GRO95/8021		7/24/2018	CJR	1
Toluene	< 0.025	mg/kg	0.013	0.041	1	GRO95/8021		7/24/2018	CJR	1
1,2,4-Trimethylbenzene	0.039 "J"	mg/kg	0.019	0.06	1	GRO95/8021		7/24/2018	CJR	1
1,3,5-Trimethylbenzene	< 0.025	mg/kg	0.0096	0.031	1	GRO95/8021		7/24/2018	CJR	1
m&p-Xylene	< 0.05	mg/kg	0.013	0.042	1	GRO95/8021		7/24/2018	CJR	1
o-Xylene	< 0.025	mg/kg	0.0062	0.02	1	GRO95/8021		7/24/2018	CJR	1

Lab Code 5034914Q
 Sample ID EX-17
 Sample Matrix Soil
 Sample Date 7/10/2018

	Result	Unit	LOD	LOQ	Dil	Method	Ext Date	Run Date	Analyst	Code
General										
General										
Solids Percent	91.7	%			1	5021		7/12/2018	MJR	1
Organic										
PVOC + Naphthalene										
Benzene	0.062	mg/kg	0.0095	0.03	1	GRO95/8021		7/24/2018	CJR	1
Ethylbenzene	0.103	mg/kg	0.016	0.05	1	GRO95/8021		7/24/2018	CJR	1
Methyl tert-butyl ether (MTBE)	< 0.025	mg/kg	0.011	0.034	1	GRO95/8021		7/24/2018	CJR	1
Naphthalene	0.194	mg/kg	0.022	0.07	1	GRO95/8021		7/24/2018	CJR	1
Toluene	0.15	mg/kg	0.013	0.041	1	GRO95/8021		7/24/2018	CJR	1
1,2,4-Trimethylbenzene	0.40	mg/kg	0.019	0.06	1	GRO95/8021		7/24/2018	CJR	1
1,3,5-Trimethylbenzene	0.208	mg/kg	0.0096	0.031	1	GRO95/8021		7/24/2018	CJR	1
m&p-Xylene	0.35	mg/kg	0.013	0.042	1	GRO95/8021		7/24/2018	CJR	1
o-Xylene	0.14	mg/kg	0.0062	0.02	1	GRO95/8021		7/24/2018	CJR	1

Project #

Lab Code 5034914R
 Sample ID EX-18
 Sample Matrix Soil
 Sample Date 7/10/2018

	Result	Unit	LOD	LOQ	Dil	Method	Ext Date	Run Date	Analyst	Code
General										
General										
Solids Percent	89.9	%			1	5021		7/12/2018	MJR	1
Organic										
PVOC + Naphthalene										
Benzene	4.2	mg/kg	0.095	0.3	10	GRO95/8021		7/25/2018	CJR	1
Ethylbenzene	29.9	mg/kg	0.16	0.5	10	GRO95/8021		7/25/2018	CJR	1
Methyl tert-butyl ether (MTBE)	< 0.25	mg/kg	0.11	0.34	10	GRO95/8021		7/25/2018	CJR	1
Naphthalene	36	mg/kg	0.22	0.7	10	GRO95/8021		7/25/2018	CJR	1
Toluene	75	mg/kg	0.13	0.41	10	GRO95/8021		7/25/2018	CJR	1
1,2,4-Trimethylbenzene	59	mg/kg	0.19	0.6	10	GRO95/8021		7/25/2018	CJR	1
1,3,5-Trimethylbenzene	28.6	mg/kg	0.096	0.31	10	GRO95/8021		7/25/2018	CJR	1
m&p-Xylene	112	mg/kg	0.13	0.42	10	GRO95/8021		7/25/2018	CJR	1
o-Xylene	42	mg/kg	0.062	0.2	10	GRO95/8021		7/25/2018	CJR	1

Lab Code 5034914S
 Sample ID EX-19
 Sample Matrix Soil
 Sample Date 7/10/2018

	Result	Unit	LOD	LOQ	Dil	Method	Ext Date	Run Date	Analyst	Code
General										
General										
Solids Percent	91.6	%			1	5021		7/12/2018	MJR	1
Organic										
PVOC + Naphthalene										
Benzene	< 0.025	mg/kg	0.0095	0.03	1	GRO95/8021		7/25/2018	CJR	1
Ethylbenzene	< 0.025	mg/kg	0.016	0.05	1	GRO95/8021		7/25/2018	CJR	1
Methyl tert-butyl ether (MTBE)	< 0.025	mg/kg	0.011	0.034	1	GRO95/8021		7/25/2018	CJR	1
Naphthalene	< 0.025	mg/kg	0.022	0.07	1	GRO95/8021		7/25/2018	CJR	1
Toluene	0.063	mg/kg	0.013	0.041	1	GRO95/8021		7/25/2018	CJR	1
1,2,4-Trimethylbenzene	0.063	mg/kg	0.019	0.06	1	GRO95/8021		7/25/2018	CJR	1
1,3,5-Trimethylbenzene	0.0293 "J"	mg/kg	0.0096	0.031	1	GRO95/8021		7/25/2018	CJR	1
m&p-Xylene	0.088	mg/kg	0.013	0.042	1	GRO95/8021		7/25/2018	CJR	1
o-Xylene	0.05	mg/kg	0.0062	0.02	1	GRO95/8021		7/25/2018	CJR	1

Project #

Lab Code 5034914T
 Sample ID EX-20
 Sample Matrix Soil
 Sample Date 7/10/2018

	Result	Unit	LOD	LOQ	Dil	Method	Ext Date	Run Date	Analyst	Code
General										
General										
Solids Percent	90.2	%			1	5021		7/12/2018	MJR	1
Organic										
PVOC + Naphthalene										
Benzene	< 0.025	mg/kg	0.0095	0.03	1	GRO95/8021		7/25/2018	CJR	1
Ethylbenzene	< 0.025	mg/kg	0.016	0.05	1	GRO95/8021		7/25/2018	CJR	1
Methyl tert-butyl ether (MTBE)	< 0.025	mg/kg	0.011	0.034	1	GRO95/8021		7/25/2018	CJR	1
Naphthalene	< 0.025	mg/kg	0.022	0.07	1	GRO95/8021		7/25/2018	CJR	1
Toluene	< 0.025	mg/kg	0.013	0.041	1	GRO95/8021		7/25/2018	CJR	1
1,2,4-Trimethylbenzene	0.055 "J"	mg/kg	0.019	0.06	1	GRO95/8021		7/25/2018	CJR	1
1,3,5-Trimethylbenzene	0.034	mg/kg	0.0096	0.031	1	GRO95/8021		7/25/2018	CJR	1
m&p-Xylene	< 0.05	mg/kg	0.013	0.042	1	GRO95/8021		7/25/2018	CJR	1
o-Xylene	0.0267	mg/kg	0.0062	0.02	1	GRO95/8021		7/25/2018	CJR	1

Lab Code 5034914U
 Sample ID EX-21
 Sample Matrix Soil
 Sample Date 7/10/2018

	Result	Unit	LOD	LOQ	Dil	Method	Ext Date	Run Date	Analyst	Code
General										
General										
Solids Percent	89.9	%			1	5021		7/12/2018	MJR	1
Organic										
PVOC + Naphthalene										
Benzene	< 0.025	mg/kg	0.0095	0.03	1	GRO95/8021		7/25/2018	CJR	1
Ethylbenzene	< 0.025	mg/kg	0.016	0.05	1	GRO95/8021		7/25/2018	CJR	1
Methyl tert-butyl ether (MTBE)	< 0.025	mg/kg	0.011	0.034	1	GRO95/8021		7/25/2018	CJR	1
Naphthalene	< 0.025	mg/kg	0.022	0.07	1	GRO95/8021		7/25/2018	CJR	1
Toluene	< 0.025	mg/kg	0.013	0.041	1	GRO95/8021		7/25/2018	CJR	1
1,2,4-Trimethylbenzene	< 0.025	mg/kg	0.019	0.06	1	GRO95/8021		7/25/2018	CJR	1
1,3,5-Trimethylbenzene	< 0.025	mg/kg	0.0096	0.031	1	GRO95/8021		7/25/2018	CJR	1
m&p-Xylene	< 0.05	mg/kg	0.013	0.042	1	GRO95/8021		7/25/2018	CJR	1
o-Xylene	< 0.025	mg/kg	0.0062	0.02	1	GRO95/8021		7/25/2018	CJR	1

Project Name KOPATZ PROPERTY

Invoice # E34914

Project #

Lab Code 5034914V

Sample ID MEOH BLANK

Sample Matrix Soil

Sample Date 7/10/2018

	Result	Unit	LOD	LOQ	Dil	Method	Ext Date	Run Date	Analyst	Code
Organic										
PVOC + Naphthalene										
Benzene	< 0.025	mg/kg	0.0095	0.03	1	GRO95/8021		7/24/2018	CJR	1
Ethylbenzene	< 0.025	mg/kg	0.016	0.05	1	GRO95/8021		7/24/2018	CJR	1
Methyl tert-butyl ether (MTBE)	< 0.025	mg/kg	0.011	0.034	1	GRO95/8021		7/24/2018	CJR	1
Naphthalene	< 0.025	mg/kg	0.022	0.07	1	GRO95/8021		7/24/2018	CJR	1
Toluene	< 0.025	mg/kg	0.013	0.041	1	GRO95/8021		7/24/2018	CJR	1
1,2,4-Trimethylbenzene	< 0.025	mg/kg	0.019	0.06	1	GRO95/8021		7/24/2018	CJR	1
1,3,5-Trimethylbenzene	< 0.025	mg/kg	0.0096	0.031	1	GRO95/8021		7/24/2018	CJR	1
m&p-Xylene	< 0.05	mg/kg	0.013	0.042	1	GRO95/8021		7/24/2018	CJR	1
o-Xylene	< 0.025	mg/kg	0.0062	0.02	1	GRO95/8021		7/24/2018	CJR	1

"J" Flag: Analyte detected between LOD and LOQ

LOD Limit of Detection

LOQ Limit of Quantitation

Code	Comment
1	Laboratory QC within limits.

All solid sample results reported on a dry weight basis unless otherwise indicated. All LOD's and LOQ's are adjusted for dilutions but not dry weight. Subcontracted results are denoted by SUB in the analyst field.

Authorized Signature

Michael Ricker

