



Excellence through experience™

709 Gillette Street, Suite 3 ♦ La Crosse, WI 54603 ♦ 1-800-552-2932 ♦ Fax (608) 781-8893 Email: rona@metcohq.com ♦ www.metcohq.com

August 10, 2018

BRRTS #: 03-27-000811
PECFA #: 54635-9999-16-A

Matthew Vitale
Wisconsin Department of Natural Resources
1300 W Clairemont Avenue
Eau Claire, WI 54701

Subject: Hunters Corner Store – Groundwater Monitoring Report.

Dear Mr. Vitale,

Enclosed is the Groundwater Monitoring Report for the Hunters Corner Store site located in Hixton, Wisconsin. **This completes the workscope approved by the WDNR on 11/23/16.**

Free Product

On December 20, 2017, METCO personnel checked all site wells for the presence of free product.

On March 13, 2018, METCO personnel checked all site wells for the presence of free product.

On June 7, 2018, METCO personnel checked all site wells for the presence of free product.

Groundwater Monitoring

On December 20, 2017, METCO personnel collected groundwater samples from seven monitoring wells (MW-1R, MW-2, MW-3, MW-4, MW-5, MW-7, and MW-8) for laboratory analysis (PVOC and Naphthalene). Monitoring well MW-6 could not be located and appeared to have been destroyed. Field measurements for water level, Dissolved Oxygen, pH, ORP, temperature, and Specific Conductivity were collected from all sampled monitoring wells.

On March 13, 2018, METCO personnel collected groundwater samples from seven monitoring wells (MW-1R, MW-2, MW-3, MW-4, MW-5, MW-6, MW-7, and MW-8) for laboratory analysis (PVOC and Naphthalene). Field measurements for water level, Dissolved Oxygen, pH, ORP, temperature, and Specific Conductivity were collected from all sampled monitoring wells.

On June 7, 2018, METCO personnel collected groundwater samples from eight monitoring wells (MW-1R, MW-2, MW-3, MW-4, MW-5, MW-6, MW-7, and MW-8) for laboratory analysis (PVOC and Naphthalene). Monitoring well MW-6 was located, but its cap and flush mount cover were missing. It appears to have been damaged during some excavation work. Field measurements for water level, Dissolved Oxygen, pH, ORP, temperature, and Specific Conductivity were collected from all sampled monitoring wells.

Free Product Results

Monitoring Well MW-1R: Measurable free product levels in monitoring well MW-1R was encountered

during the sampling event in June 2018 (1.5 inch). Approximately 0.01 gallons of free product was removed from MW-1R via hand bailing.

Monitoring Well MW-3: Measurable free product levels in monitoring well MW-3 were encountered during the sampling events in December 2017 (1 inch) and June 2018 (0.75 inch). Approximately 0.02 gallons of free product was removed from MW-3 via hand bailing.

Groundwater Monitoring Results

Monitoring Well MW-1R: Currently shows NR140 Enforcement Standard (ES) exceedances for Benzene (3020 ppb), Ethylbenzene (1820 ppb), Naphthalene (380 ppb), Toluene (7700 ppb), Trimethylbenzenes (2400 ppb), and Xylenes (7510 ppb). The contaminant concentrations appear to be increasing.

Monitoring Well MW-2: Currently shows no detects for PVOC and Naphthalene.

Monitoring Well MW-3: Currently shows NR140 ES exceedances for Benzene (2330 ppb), Ethylbenzene (1900 ppb), Naphthalene (530 ppb), Toluene (2070 ppb), Trimethylbenzenes (2820 ppb), and Xylenes (8260 ppb). The contaminant concentrations appear to be increasing.

Monitoring Well MW-4: Currently shows no detects for PVOC and Naphthalene.

Monitoring Well MW-5: Currently shows no detects for PVOC and Naphthalene.

Monitoring Well MW-6: Currently shows NR140 ES exceedances for Benzene (7.0 ppb) as well as a NR140 Preventive Action limit (PAL) exceedance for Trimethylbenzene (178 ppb). The contaminant concentrations appear to be decreasing.

Monitoring Well MW-7: Currently shows no detects for PVOC and Naphthalene.

Monitoring Well MW-8: Currently shows no detects for PVOC and Naphthalene.

Investigative Waste Disposal

On December 12, 2018, DKS Transport Services, LLC of Menomonie, Wisconsin picked up and disposed of one drum of soil cuttings at the Advanced Disposal – Seven Mile Creek Landfill in Eau Claire, Wisconsin.

Conclusions

It is the recommendation of METCO that the subject property be reviewed for the possibility of closure for the following reasons: (1) The extent and degree of soil and groundwater contamination has been defined to a practical extent. (2) The majority of accessible contamination was removed and disposed of in June 2017 (683.83 tons). (3) Although a small area of soil contamination exceeding NR 720 Direct Contact RCL remains in the area of EX-12 it is beneath N. Sechlerville Road. (4) The risk of vapor intrusion appears unlikely as no building exists on the source property, and the only other building within the groundwater plume, which is the former Post Office Building, appear to have no basement. The Benzene levels are likely well below 1000 ppb, based on results from Monitoring Well MW-6 (7.0 ppb). (5) The subject property and surrounding properties are all served by municipal water supply.

The nearest municipal well exists approximately 1 mile to the north-west of the subject property. The nearest potential private potable well is in the proximity of an abandoned trailer home located approximately 700-800 feet west of the subject property. No other private potable wells are known to exist within 1,000 feet of the subject property.

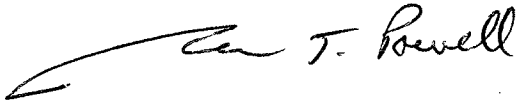
If the state concurs, please feel free to contact METCO to discuss closure activities and costs.

However, if due to the remaining free product in monitoring wells MW-1R and MW-3 the state determines that additional work is required to move this site toward closure, please contact METCO to discuss the workscope and budget.

A Detailed Site Map, Groundwater Flow Maps (3), Groundwater Iso-Concentration Map, Data Tables, Waste Disposal Documents, and Laboratory Documents have been attached.

If you have any questions or comments, please feel free to call (608-781-8879) or email at jasonp@metcohq.com.

Sincerely,


A handwritten signature in black ink that reads "Jason T. Powell". The signature is fluid and cursive, with a long horizontal stroke at the beginning.

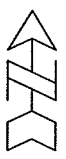
Jason T. Powell
Staff Scientist

Attachments

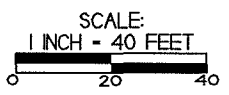
c: Stephen Doerr – Client

SITE LAYOUT MAP
HUNTERS CORNER STORE

 <small>Evidence through experience</small>	709 Gillette St. Ste 3 La Crosse, WI 54603 Tel: (608) 781-8879 Fax: (608) 781-8893	HIXTON, WISCONSIN DRAWN BY: ED & JP DATE: 08/02/2008 & 05/08/2002 REVISED BY: JJ 10/13/2015



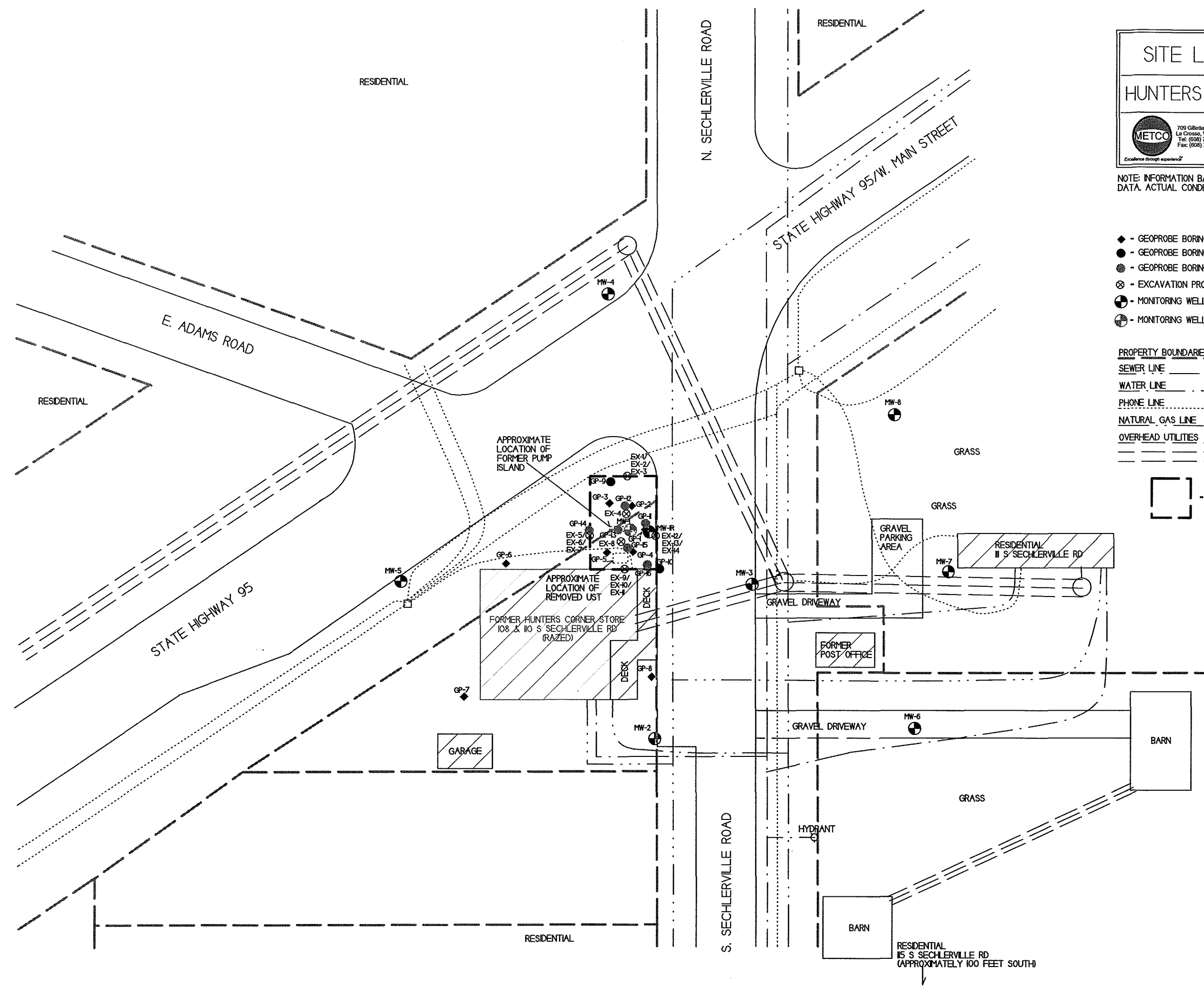
NOTE: INFORMATION BASED ON AVAILABLE DATA. ACTUAL CONDITIONS MAY DIFFER



- ◆ - GEOPROBE BORING LOCATION - AYERS & ASSOCIATES (8/1/2006)
- - GEOPROBE BORING LOCATION - METCO (8/1/2010)
- ⊙ - GEOPROBE BORING LOCATION - METCO (7/24/2014)
- ⊗ - EXCAVATION PROJECT SOIL SAMPLING LOCATION
- ⊕ - MONITORING WELL LOCATION
- ⊖ - MONITORING WELL LOCATION (ABANDONED)


- PROPERTY BOUNDARIES (APPROXIMATE)
- SEWER LINE
 - WATER LINE
 - PHONE LINE
 - NATURAL GAS LINE
 - OVERHEAD UTILITIES

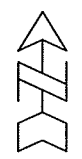
□ - EXCAVATION AREA (METCO, JUNE 2017)



**GROUNDWATER FLOW
MAP: 12/20/2017**

HUNTERS CORNER STORE

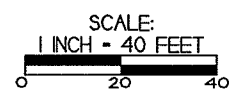
 <small>709 Gilette St. Ste 3 Lu Cross, WI 54603 Tel: (608) 781-8879 Fax: (608) 781-8893 <i>Excavate through experience!</i></small>	HIXTON, WISCONSIN <small>DRAWN BY: ED & JF DATE: 08/02/2018 & 05/08/2012 REVISED BY: MW 08/08/2018</small>
--	--



NOTE: INFORMATION BASED ON AVAILABLE DATA. ACTUAL CONDITIONS MAY DIFFER

NOTE: MW-3 WAS NOT USED FOR THE FLOW CALCULATION DUE TO FREE PRODUCT.

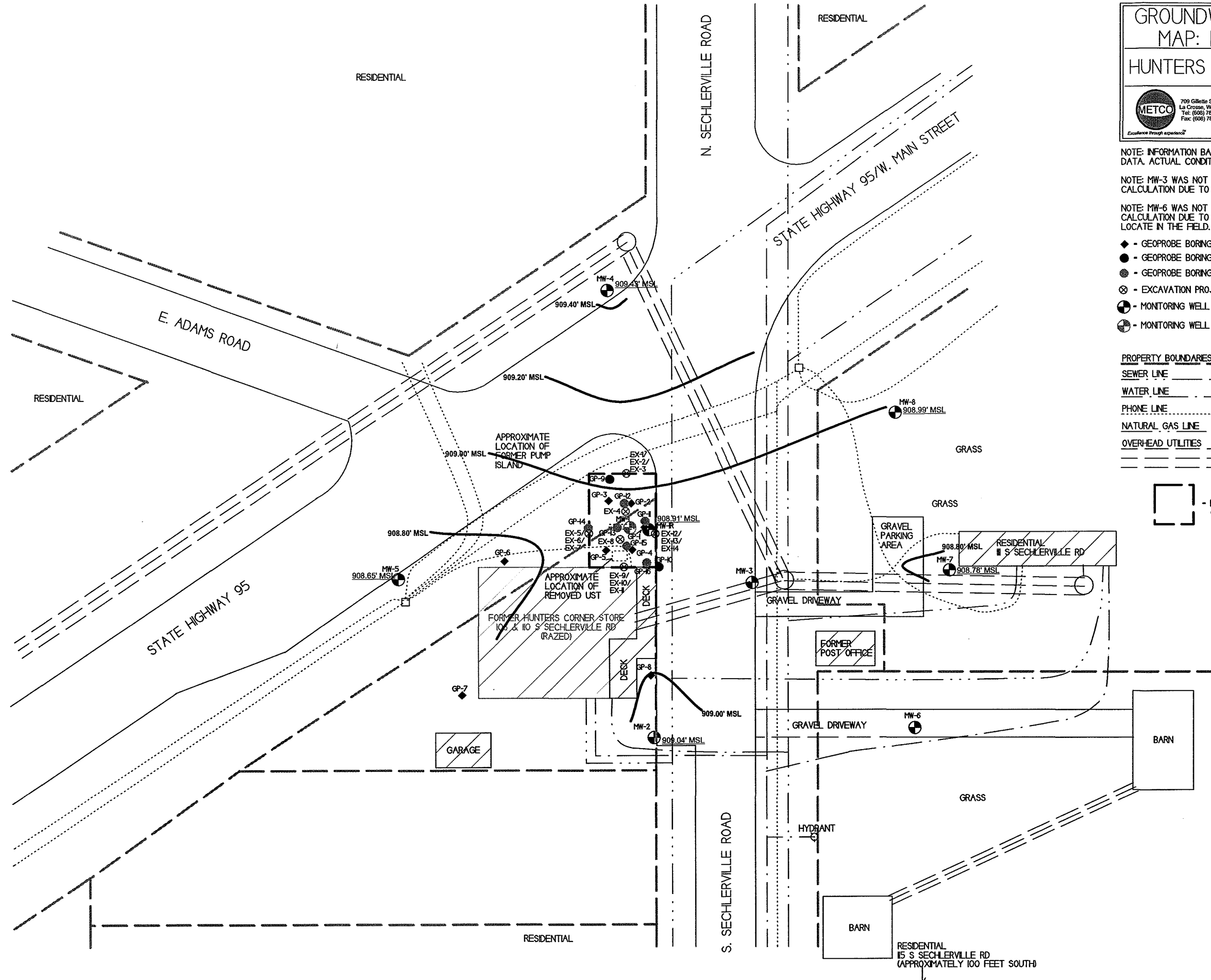
NOTE: MW-6 WAS NOT USED FOR THE FLOW CALCULATION DUE TO THE INABILITY TO LOCATE IN THE FIELD.



- ◆ - GEOPROBE BORING LOCATION - AYERS & ASSOCIATES (8/1/2006)
- - GEOPROBE BORING LOCATION - METCO (8/1/2011)
- ⊙ - GEOPROBE BORING LOCATION - METCO (7/24/2014)
- ⊗ - EXCAVATION PROJECT SOIL SAMPLING LOCATION
- ⊕ - MONITORING WELL LOCATION
- ⊖ - MONITORING WELL LOCATION (ABANDONED)

- PROPERTY BOUNDARIES (APPROXIMATE) _____
- SEWER LINE _____
- WATER LINE _____
- PHONE LINE _____
- NATURAL GAS LINE _____
- OVERHEAD UTILITIES _____

□ - EXCAVATION AREA (METCO, JUNE 2017)



RESIDENTIAL
15 S SECHLERVILLE RD
(APPROXIMATELY 100 FEET SOUTH)

**GROUNDWATER FLOW
MAP: 3/13/2018
HUNTERS CORNER STORE**

 <small>709 Gable St. Ste 3 Lafayette, WI 54603 Tel: (608) 781-8879 Fax: (608) 781-8853</small>	HIXTON, WISCONSIN <small>DRAWN BY: ED & JP DATE: 08/02/2018 & 05/08/2012 REVISED BY: MW 08/06/2018</small>

NOTE: INFORMATION BASED ON AVAILABLE DATA. ACTUAL CONDITIONS MAY DIFFER

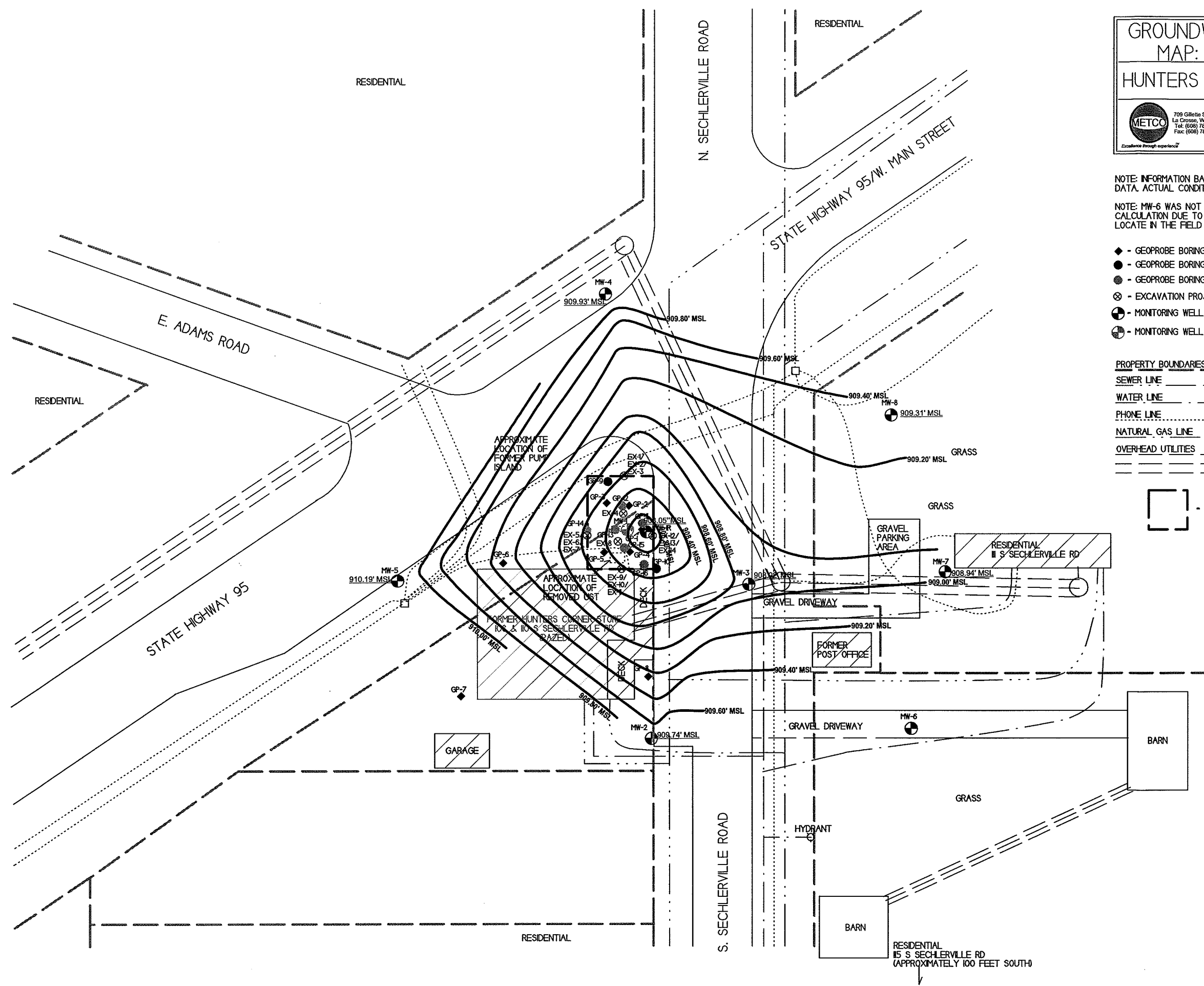
NOTE: MW-6 WAS NOT USED FOR THE FLOW CALCULATION DUE TO THE INABILITY TO LOCATE IN THE FIELD

SCALE:
1 INCH = 40 FEET

- ◆ - GEOPROBE BORING LOCATION - AYERS & ASSOCIATES (8/1/2006)
- - GEOPROBE BORING LOCATION - METCO (8/1/2018)
- ⊙ - GEOPROBE BORING LOCATION - METCO (7/24/2014)
- ⊗ - EXCAVATION PROJECT SOIL SAMPLING LOCATION
- ⊕ - MONITORING WELL LOCATION
- ⊖ - MONITORING WELL LOCATION (ABANDONED)

- PROPERTY BOUNDARIES (APPROXIMATE) _____
- SEWER LINE _____
- WATER LINE _____
- PHONE LINE _____
- NATURAL GAS LINE _____
- OVERHEAD UTILITIES _____

□ - EXCAVATION AREA (METCO, JUNE 2017)



RESIDENTIAL

RESIDENTIAL

N. SECHLERVILLE ROAD

STATE HIGHWAY 95/W. MAIN STREET

E. ADAMS ROAD

RESIDENTIAL

STATE HIGHWAY 95

APPROXIMATE LOCATION OF FORMER PUMP ISLAND

APPROXIMATE LOCATION OF REMOVED UST

FORMER HUNTERS CORNER STORE 100 & 110 S SECHLERVILLE RD

GARAGE

RESIDENTIAL

S. SECHLERVILLE ROAD

RESIDENTIAL 15 S SECHLERVILLE RD (APPROXIMATELY 100 FEET SOUTH)

GRAVEL PARKING AREA

FORMER POST OFFICE

GRAVEL DRIVEWAY

HYDRANT

BARN

RESIDENTIAL 11 S SECHLERVILLE RD

BARN

GRASS

GRASS

GRASS

MW-4
909.93' MSL

909.80' MSL

909.60' MSL

909.40' MSL

MW-8
909.31' MSL

909.20' MSL

MW-5
910.19' MSL

GP-7

910.00' MSL

909.80' MSL

MW-2
909.74' MSL

909.60' MSL

909.40' MSL

909.20' MSL

MW-7
908.94' MSL

909.00' MSL

908.05' MSL

908.00' MSL

908.00' MSL

908.00' MSL

908.00' MSL

908.00' MSL

908.00' MSL

908.00' MSL

908.00' MSL

908.00' MSL

908.00' MSL

908.00' MSL

908.00' MSL

908.00' MSL

908.00' MSL

908.00' MSL

908.00' MSL

908.00' MSL

908.00' MSL

908.00' MSL

908.00' MSL

908.00' MSL

908.00' MSL

908.00' MSL

908.00' MSL

908.00' MSL

908.00' MSL

908.00' MSL

908.00' MSL

908.00' MSL

908.00' MSL

908.00' MSL

908.00' MSL

908.00' MSL

908.00' MSL

908.00' MSL

908.00' MSL

908.00' MSL

908.00' MSL

908.00' MSL

908.00' MSL

908.00' MSL

908.00' MSL

908.00' MSL

908.00' MSL

908.00' MSL

908.00' MSL

908.00' MSL

908.00' MSL

908.00' MSL

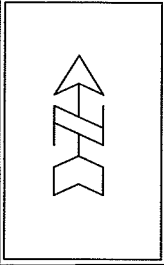
908.00' MSL

908.00' MSL

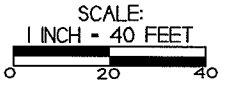
GROUNDWATER FLOW
 MAP: 6/7/2018
 HUNTERS CORNER STORE



HIXTON, WISCONSIN
 DRAWN BY: ED & J.P.
 DATE: 08/02/2014 & 05/08/2012
 REVISED BY: MW 08/06/2018



NOTE: INFORMATION BASED ON AVAILABLE DATA. ACTUAL CONDITIONS MAY DIFFER

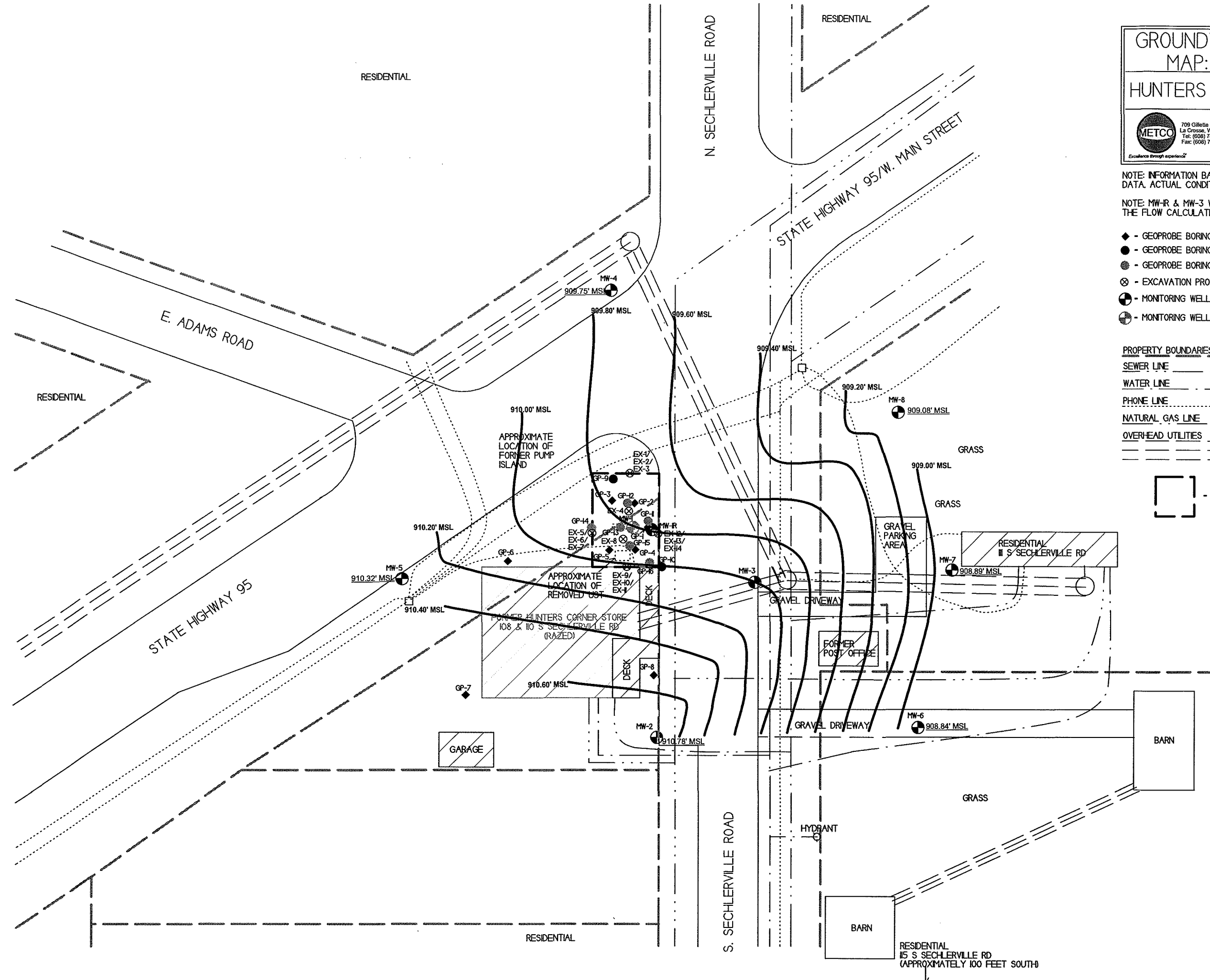


NOTE: MW-R & MW-3 WERE NOT USED FOR THE FLOW CALCULATION DUE TO FREE PRODUCT.


- ◆ - GEOPROBE BORING LOCATION - AYERS & ASSOCIATES (8/1/2006)
- - GEOPROBE BORING LOCATION - METCO (8/1/2010)
- - GEOPROBE BORING LOCATION - METCO (7/24/2014)
- ⊗ - EXCAVATION PROJECT SOIL SAMPLING LOCATION
- ⊕ - MONITORING WELL LOCATION
- ⊖ - MONITORING WELL LOCATION (ABANDONED)

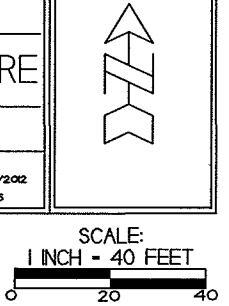
- PROPERTY BOUNDARIES (APPROXIMATE) _____
- SEWER LINE _____
- WATER LINE _____
- PHONE LINE _____
- NATURAL GAS LINE _____
- OVERHEAD UTILITIES _____

□ - EXCAVATION AREA (METCO, JUNE 2017)



RESIDENTIAL
 15 S SECHLERVILLE RD
 (APPROXIMATELY 100 FEET SOUTH)

GROUNDWATER ISOCONCENTRATION (06/07/2018)	
HUNTERS CORNER STORE	
 709 Gibraltar St. Ste 3 La Crosse, WI 54603 Tel: (608) 781-8879 Fax: (608) 781-8893	HIXTON, WISCONSIN DRAWN BY: ED & JP DATE: 08/02/2014 & 05/08/2012 REVISED BY: JJ 10/13/2015



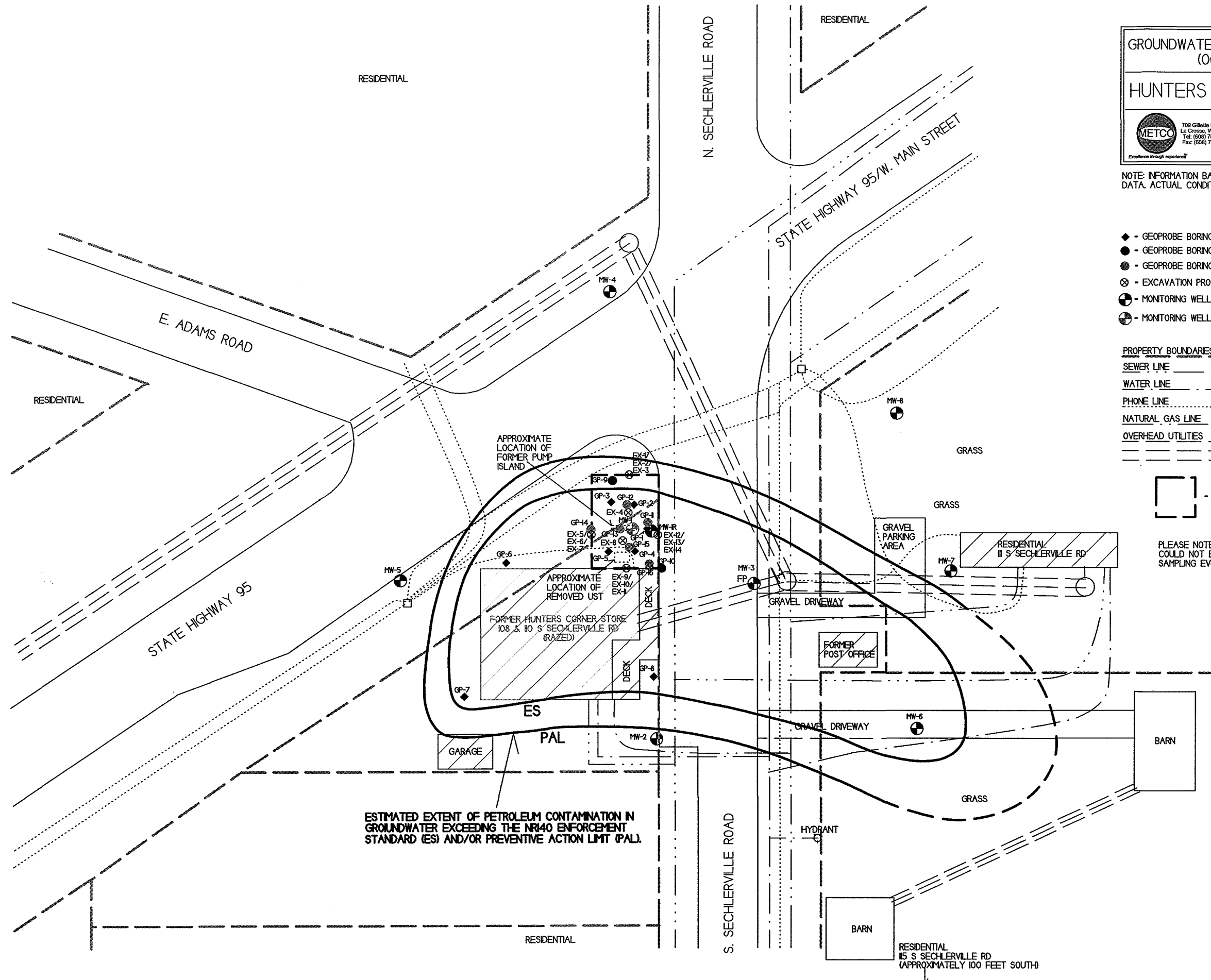
NOTE: INFORMATION BASED ON AVAILABLE DATA. ACTUAL CONDITIONS MAY DIFFER

- ◆ - GEOPROBE BORING LOCATION - AYERS & ASSOCIATES (8/1/2006)
- - GEOPROBE BORING LOCATION - METCO (8/1/2011)
- - GEOPROBE BORING LOCATION - METCO (7/24/2014)
- ⊗ - EXCAVATION PROJECT SOIL SAMPLING LOCATION
- ⊕ - MONITORING WELL LOCATION
- ⊕ - MONITORING WELL LOCATION (ABANDONED)

- PROPERTY BOUNDARIES (APPROXIMATE) _____
- SEWER LINE _____
- WATER LINE _____
- PHONE LINE _____
- NATURAL GAS LINE _____
- OVERHEAD UTILITIES _____



PLEASE NOTE: MONITORING WELL MW-6 COULD NOT BE LOCATED DURING THIS SAMPLING EVENT.



ESTIMATED EXTENT OF PETROLEUM CONTAMINATION IN GROUNDWATER EXCEEDING THE NR140 ENFORCEMENT STANDARD (ES) AND/OR PREVENTIVE ACTION LIMIT (PAL).

A.1 Groundwater Analytical Table
Hunter's Corner Store Site BRRT's# 03-27-000811

Well MW-4

PVC Elevation = 919.32 (feet) (MSL)

Date	Water Elevation (in feet msl)	Depth to Water (in feet)	Lead (ppb)	Benzene (ppb)	Ethyl Benzene (ppb)	MTBE (ppb)	Naphthalene (ppb)	Toluene (ppb)	Trimethylbenzenes (ppb)	Xylene (Total) (ppb)
09/06/11	909.24	10.08	<0.7	<0.5	<0.78	<0.8	<2.1	<0.53	<1.54	<1.9
09/03/12	908.71	10.61	<0.7	<0.5	<0.78	<0.8	<2.1	<0.53	<1.54	<1.9
03/14/13	COULD NOT LOCATE									
07/30/14	909.39	9.93	NS	<0.24	<0.55	<0.23	<1.7	<0.69	<3.6	<1.32
10/29/14	909.81	9.51	NS	<0.27	<0.82	<0.37	<1.2	<0.8	<1.69	<2.41
09/25/17	909.60	9.72	NS	<0.27	<0.56	<0.43	<1.7	<0.33	<1.14	<1.71
12/20/17	909.43	9.89	NS	<0.27	<0.56	<0.43	<1.7	<0.33	<1.14	<1.71
03/13/18	909.93	9.39	NS	<0.22	<0.26	<0.28	<2.1	<0.19	<1.43	<0.72
06/07/18	909.75	9.57	NS	<0.22	<0.53	<0.57	<1.7	<0.45	<1.48	<1.58
ENFORCEMENT STANDARD ES = Bold			15	5	700	60	100	800	480	2000
PREVENTIVE ACTION LIMIT PAL = Italics			<i>1.5</i>	<i>0.5</i>	<i>140</i>	<i>12</i>	<i>10</i>	<i>160</i>	<i>96</i>	<i>400</i>

(ppb) = parts per billion (ppm) = parts per million
 ns = not sampled nm = not measured

Note: Elevations are presented in feet mean sea level (msl).

Well MW-5

PVC Elevation = 917.85 (feet) (MSL)

Date	Water Elevation (in feet msl)	Depth to Water (in feet)	Lead (ppb)	Benzene (ppb)	Ethyl Benzene (ppb)	MTBE (ppb)	Naphthalene (ppb)	Toluene (ppb)	Trimethylbenzenes (ppb)	Xylene (Total) (ppb)
09/06/11	908.88	8.97	<0.7	<0.5	<0.78	<0.8	<2.1	<0.53	<1.54	<1.9
09/03/12	908.82	9.03	<0.7	<0.5	<0.78	<0.8	<2.1	<0.53	<1.54	<1.9
03/14/13	908.67	9.18	<0.7	<0.27	<0.82	<0.37	<1.2	<0.8	<1.69	<2.41
07/30/14	910.02	7.83	NS	0.94	<0.55	<0.23	<1.7	<0.69	<3.6	<1.32
10/29/14	910.37	7.48	NS	<0.27	<0.82	<0.37	<1.2	<0.8	<1.69	<2.41
09/25/17	908.80	9.05	NS	<0.27	<0.56	<0.43	<1.7	<0.33	<1.14	<1.71
12/20/17	908.65	9.20	NS	<0.27	<0.56	<0.43	<1.7	<0.33	<1.14	<1.71
03/13/18	910.19	7.66	NS	<0.22	<0.26	<0.28	<2.1	<0.19	<1.43	<0.72
06/07/18	910.32	7.53	NS	<0.22	<0.53	<0.57	<1.7	<0.45	<1.48	<1.58
ENFORCEMENT STANDARD ES = Bold			15	5	700	60	100	800	480	2000
PREVENTIVE ACTION LIMIT PAL = Italics			<i>1.5</i>	<i>0.5</i>	<i>140</i>	<i>12</i>	<i>10</i>	<i>160</i>	<i>96</i>	<i>400</i>

(ppb) = parts per billion (ppm) = parts per million
 ns = not sampled nm = not measured

Note: Elevations are presented in feet mean sea level (msl).

Well MW-6

PVC Elevation = 914.18 (feet) (MSL)

Date	Water Elevation (in feet msl)	Depth to Water (in feet)	Lead (ppb)	Benzene (ppb)	Ethyl Benzene (ppb)	MTBE (ppb)	Naphthalene (ppb)	Toluene (ppb)	Trimethylbenzenes (ppb)	Xylene (Total) (ppb)
09/03/12	908.31	5.87	4.1	3.8	30.6	<0.8	10.7	26.9	176	102.5
03/14/13	908.55	5.63	1.3	4.7	26.7	<0.37	11.3	27.8	157	85.4
07/30/14	908.62	5.56	NS	22.7	112	<3.7	34	66	362	360
10/29/14	908.74	5.44	NS	18.7	61	<0.37	18.6	35	228	186
09/25/17	COULD NOT LOCATE									
12/20/17	COULD NOT LOCATE									
03/13/18	COULD NOT LOCATE									
06/07/18	908.84	5.34	NS	7.0	25.8	<5.7	<17	19.4	178	144
ENFORCEMENT STANDARD ES = Bold			15	5	700	60	100	800	480	2000
PREVENTIVE ACTION LIMIT PAL = Italics			<i>1.5</i>	<i>0.5</i>	<i>140</i>	<i>12</i>	<i>10</i>	<i>160</i>	<i>96</i>	<i>400</i>

(ppb) = parts per billion (ppm) = parts per million
 ns = not sampled nm = not measured

Note: Elevations are presented in feet mean sea level (msl).

A.1 Groundwater Analytical Table
Hunter's Corner Store Site BRRT's# 03-27-000811

Well MW-7

PVC Elevation = 913.97 (feet) (MSL)

Date	Water Elevation (in feet msl)	Depth to Water (in feet)	Lead (ppb)	Benzene (ppb)	Ethyl Benzene (ppb)	MTBE (ppb)	Naphthalene (ppb)	Toluene (ppb)	Trimethylbenzenes (ppb)	Xylene (Total) (ppb)
09/03/12	908.42	5.55	<0.7	<0.5	<0.78	<0.8	<2.1	<0.53	<1.54	<1.9
03/14/13	908.69	5.28	<0.7	<0.27	<0.82	<0.37	<1.2	<0.8	<1.69	<2.41
07/30/14	908.72	5.25	NS	<0.24	<0.55	<0.23	<1.7	<0.69	<3.6	<1.32
10/29/14	908.86	5.11	NS	<0.27	<0.82	<0.37	<1.2	<0.8	<1.69	<2.41
09/25/17	908.91	5.06	NS	<0.27	<0.56	<0.43	<1.7	<0.33	<1.14	<1.71
12/20/17	908.78	5.19	NS	<0.27	<0.56	<0.43	<1.7	<0.33	<1.14	<1.71
03/13/18	908.94	5.03	NS	<0.22	<0.26	<0.28	<2.1	<0.19	<1.43	<0.72
06/07/18	908.89	5.08	NS	<0.22	<0.53	<0.57	<1.7	<0.45	<1.48	<1.58
ENFORCEMENT STANDARD ES = Bold			15	5	700	60	100	800	480	2000
PREVENTIVE ACTION LIMIT PAL = Italics			<i>1.5</i>	<i>0.5</i>	<i>140</i>	<i>12</i>	<i>10</i>	<i>160</i>	<i>96</i>	<i>400</i>

(ppb) = parts per billion (ppm) = parts per million

ns = not sampled nm = not measured

Note: Elevations are presented in feet mean sea level (msl).

Well MW-8

PVC Elevation = 914.00 (feet) (MSL)

Date	Water Elevation (in feet msl)	Depth to Water (in feet)	Lead (ppb)	Benzene (ppb)	Ethyl Benzene (ppb)	MTBE (ppb)	Naphthalene (ppb)	Toluene (ppb)	Trimethylbenzenes (ppb)	Xylene (Total) (ppb)
09/03/12	908.56	5.44	<0.7	<0.5	<0.78	<0.8	<2.1	<0.53	<1.54	<1.9
03/14/13	908.88	5.12	<0.7	<0.27	<0.82	<0.37	<1.2	<0.8	<1.69	<2.41
07/30/14	908.94	5.06	NS	<0.24	<0.55	<0.23	<1.7	<0.69	<3.6	<1.32
10/29/14	909.03	4.97	NS	<0.27	<0.82	<0.37	<1.2	<0.8	<1.69	<2.41
09/25/17	909.11	4.89	NS	<0.27	<0.56	<0.43	<1.7	<0.33	<1.14	<1.71
12/20/17	908.99	5.01	NS	<0.27	<0.56	<0.43	<1.7	<0.33	<1.14	<1.71
03/13/18	909.31	4.69	NS	<0.22	<0.26	<0.28	<2.1	<0.19	<1.43	<0.72
06/07/18	909.08	4.92	NS	<0.22	<0.53	<0.57	<1.7	<0.45	<1.48	<1.58
ENFORCEMENT STANDARD ES = Bold			15	5	700	60	100	800	480	2000
PREVENTIVE ACTION LIMIT PAL = Italics			<i>1.5</i>	<i>0.5</i>	<i>140</i>	<i>12</i>	<i>10</i>	<i>160</i>	<i>96</i>	<i>400</i>

(ppb) = parts per billion (ppm) = parts per million

ns = not sampled nm = not measured

Note: Elevations are presented in feet mean sea level (msl).

A.6 Water Level Elevations
Hunter's Corner Store Site BRRT's# 03-27-000811
Hixton, Wisconsin

	MW-1	MW-1R	MW-2	MW-3	MW-4	MW-5	MW-6	MW-7	MW-8
Ground Surface (feet msl)	917.46	917.20	915.65	916.89	919.64	918.27	NM	914.50	914.45
PVC top (feet msl)	917.27	916.76	915.41	916.66	919.32	917.85	914.18	913.97	914.00
Re-surveyed PVC top (feet msl)				916.56					
Well Depth (feet)	13.00	13.00	13.00	13.00	15.00	15.00	8.80	13.00	13.00
Top of screen (feet msl)	914.46	914.20	912.65	913.89	914.64	913.27	NM	911.50	911.45
Bottom of screen (feet msl)	904.46	904.20	902.65	903.89	904.64	903.27	NM	901.50	901.45
Depth to Water From Top of PVC (feet)									
9/6/2011	8.24	NI	6.12	7.77	10.08	8.97	NI	NI	NI
9/3/2012	8.75	NI	6.26	8.22	10.61	9.03	5.87	5.55	5.44
3/14/2013	8.68	NI	6.28	7.99	CNL	9.18	5.63	5.28	5.12
7/30/2014	8.46	NI	6.27	7.91	9.93	7.83	5.56	5.25	5.06
10/29/2014	8.32	NI	5.83	7.83	9.51	7.48	5.44	5.11	4.97
9/25/2017	A	7.69	6.27	FP	9.72	9.05	CNL	5.06	4.89
12/20/2017	A	7.85	6.37	FP	9.89	9.20	CNL	5.19	5.01
3/13/2018	A	8.71	5.67	7.74	9.39	7.66	CNL	5.03	4.69
6/7/2018	A	FP	4.63	FP	9.57	7.53	5.34	5.08	4.92
Depth to Water From Ground Surface (feet)									
9/6/2011	8.43	NI	6.36	8.00	10.40	9.39	NI	NI	NI
9/3/2012	8.94	NI	6.50	8.45	10.93	9.45	NM	6.08	5.89
3/14/2013	8.87	NI	6.52	8.22	CNL	9.60	NM	5.81	5.57
7/30/2014	8.65	NI	6.51	8.14	10.25	8.25	NM	5.78	5.51
10/29/2014	8.51	NI	6.07	8.06	9.83	7.90	NM	5.64	5.42
9/25/2017	A	8.13	6.51	FP	10.04	9.47	CNL	5.59	5.34
12/20/2017	A	8.29	6.61	FP	10.21	9.62	CNL	5.72	5.46
3/13/2018	A	9.15	5.91	7.97	9.71	8.08	CNL	5.56	5.14
6/7/2018	A	FP	4.87	FP	9.89	7.95	CNL	5.61	5.37
Groundwater Elevation (feet msl)									
9/6/2011	908.83	NI	909.14	908.78	909.24	908.88	NI	NI	NI
9/3/2012	908.32	NI	909.00	908.33	908.71	908.82	908.31	908.42	908.56
3/14/2013	908.39	NI	908.98	908.56	CNL	908.67	908.55	908.69	908.88
7/30/2014	908.61	NI	908.99	908.64	909.39	910.02	908.62	908.72	908.94
10/29/2014	908.95	NI	909.58	908.83	909.81	910.37	908.74	908.86	909.03
9/25/2017	A	909.07	909.14	FP	909.60	908.80	CNL	908.91	909.11
12/20/2017	A	908.91	909.04	FP	909.43	908.65	CNL	908.78	908.99
3/13/2018	A	908.05	909.74	908.92	909.93	910.19	CNL	908.94	909.31
6/7/2018	A	FP	910.78	FP	909.75	910.32	908.84	908.89	909.08

Note: Elevations are presented in feet mean sea level (msl).

CNL = Could Not Locate

A = Abandoned

FP = Free Product

NI = Not Installed

NM = Not Measured

A.7 Other
Groundwater NA Indicator Results
Hunter's Corner Store Site BRRT's# 03-27-000811

Well MW-1/1R

Date	Dissolved Oxygen (ppm)	pH	ORP	Temp (C)	Specific Conductance	Nitrate + Nitrite (ppm)	Total Sulfate (ppm)	Dissolved Iron (ppm)	Manganese (ppb)
09/06/11	0.64	6.73	1	17.8	1105	<0.1	<3.4	55700	6330
09/03/12	0.13	6.67	-24	16.1	2	<0.1	<8.5	45700	2750
03/14/13	1.63	6.42	67	6.5	1515	NS	NS	NS	NS
07/30/14	0.91	6.44	-83	15.2	1690	NS	NS	NS	NS
10/29/14	1.02	6.02	-12	11.9	1123	NS	NS	NS	NS
06/20/17	MW-1 WAS ABANDONED & REMOVED DURING EXCAVATION PROJECT								
08/25/17	MW-1 WAS REPLACED WITH MW-1R								
09/25/17	1.32	7.16	35	18.9	211	NS	NS	NS	NS
12/20/17	1.06	6.52	-6	8.7	1011	NS	NS	NS	NS
03/13/18	2.78	6.81	58	5.5	1555	NS	NS	NS	NS
06/07/18	0.99	6.82	-61	10.8	NM	NS	NS	NS	NS
ENFORCE MENT STANDARD = ES - Bold						10	-	-	300
PREVENTIVE ACTION LIMIT = <i>PAL - Italics</i>						2	-	-	60

(ppb) = parts per billion (ppm) = parts per million
 ns = not sampled nm = not measured
 Note: Elevations are presented in feet mean sea level (msl).

Well MW-2

Date	Dissolved Oxygen (ppm)	pH	ORP	Temp (C)	Specific Conductance	Nitrate + Nitrite (ppm)	Total Sulfate (ppm)	Dissolved Iron (ppm)	Manganese (ppb)
09/06/11	1.07	6.74	15	20.4	713	1.28	15.1	1950	190
09/03/12	0.15	6.73	69	19.9	773	3.1	10.4	180	46.1
03/14/13	2.34	6.76	337	4.8	1350	NS	NS	NS	NS
07/30/14	1.29	5.65	344	17.2	918	NS	NS	NS	NS
10/29/14	2.23	7.89	345	12.2	883	NS	NS	NS	NS
09/25/17	2.62	6.89	204	19.0	1043	NS	NS	NS	NS
12/20/17	2.69	7.24	114	8.3	1668	NS	NS	NS	NS
03/13/18	4.63	7.99	229	4.0	621	NS	NS	NS	NS
06/07/18	2.33	6.66	262	13.2	NM	NS	NS	NS	NS
ENFORCE MENT STANDARD = ES - Bold						10	-	-	300
PREVENTIVE ACTION LIMIT = <i>PAL - Italics</i>						2	-	-	60

(ppb) = parts per billion (ppm) = parts per million
 ns = not sampled nm = not measured
 Note: Elevations are presented in feet mean sea level (msl).

Well MW-3

Date	Dissolved Oxygen (ppm)	pH	ORP	Temp (C)	Specific Conductance	Nitrate + Nitrite (ppm)	Total Sulfate (ppm)	Dissolved Iron (ppm)	Manganese (ppb)
09/06/11	1.02	6.73	-127	17.6	1240	<0.1	<3.4	34800	1850
09/03/12	0.12	7.35	-57	17.6	1265	<0.1	<8.5	30500	1470
03/14/13	1.34	7.04	9	6.3	1243	NS	NS	NS	NS
07/30/14	0.95	6.17	-32	16.9	1268	NS	NS	NS	NS
10/29/14	1.68	7.23	-22	12.7	882	NS	NS	NS	NS
09/25/17	0.79	7.38	-48	19.7	172	NS	NS	NS	NS
12/20/17	0.92	7.01	-18	8.5	444	NS	NS	NS	NS
03/13/18	3.04	7.7	88	5.4	1038	NS	NS	NS	NS
06/07/18	0.84	6.94	-120	11.2	NM	NS	NS	NS	NS
ENFORCE MENT STANDARD = ES - Bold						10	-	-	300
PREVENTIVE ACTION LIMIT = <i>PAL - Italics</i>						2	-	-	60

(ppb) = parts per billion (ppm) = parts per million
 ns = not sampled nm = not measured
 Note: Elevations are presented in feet mean sea level (msl).

A.7 Other
Groundwater NA Indicator Results
Hunter's Corner Store Site BRRT's# 03-27-000811

Well MW-4

Date	Dissolved Oxygen (ppm)	pH	ORP	Temp (C)	Specific Conductance	Nitrate + Nitrite (ppm)	Total Sulfate (ppm)	Dissolved Iron (ppm)	Manganese (ppb)
09/06/11	1.20	6.74	-112	16.1	792	0.34	48.3	4830	5573
09/03/12	0.17	6.83	-20	13.8	851	<0.1	23.4	11000	726
03/14/13	COULD NOT LOCATE								
07/30/14	1.57	5.49	361	13.4	4733	NS	NS	NS	NS
10/29/14	2.95	6.11	369	12.2	479	NS	NS	NS	NS
09/25/17	4.78	6.94	276	18.8	612	NS	NS	NS	NS
12/20/17	4.62	6.98	259	8.1	1445	NS	NS	NS	NS
03/13/18	7.38	6.21	215	4.5	525	NS	NS	NS	NS
06/07/18	3.53	6.25	310	10.0	NM	NS	NS	NS	NS
ENFORCE MENT STANDARD = ES – Bold						10	-	-	300
PREVENTIVE ACTION LIMIT = <i>PAL - Italics</i>						2	-	-	60

(ppb) = parts per billion (ppm) = parts per million
 ns = not sampled nm = not measured
 Note: Elevations are presented in feet mean sea level (msl).

Well MW-5

Date	Dissolved Oxygen (ppm)	pH	ORP	Temp (C)	Specific Conductance	Nitrate + Nitrite (ppm)	Total Sulfate (ppm)	Dissolved Iron (ppm)	Manganese (ppb)
09/06/11	1.30	6.74	2	16.5	561	1.39	16.4	140	116
09/03/12	1.13	6.75	207	17.5	1020	2.3	10.7	<60	13.9
03/14/13	2.46	6.64	330	7.1	983	NS	NS	NS	NS
07/30/14	2.62	5.61	173	17.1	1094	NS	NS	NS	NS
10/29/14	3.54	6.81	352	12.4	645	NS	NS	NS	NS
09/25/17	3.07	7.28	227	18.7	1216	NS	NS	NS	NS
12/20/17	3.31	7.06	211	8.0	846	NS	NS	NS	NS
03/13/18	5.62	6.84	220	5.8	773	NS	NS	NS	NS
06/07/18	1.93	6.76	292	12.3	NM	NS	NS	NS	NS
ENFORCE MENT STANDARD = ES – Bold						10	-	-	300
PREVENTIVE ACTION LIMIT = <i>PAL - Italics</i>						2	-	-	60

(ppb) = parts per billion (ppm) = parts per million
 ns = not sampled nm = not measured
 Note: Elevations are presented in feet mean sea level (msl).

Well MW-6

Date	Dissolved Oxygen (ppm)	pH	ORP	Temp (C)	Specific Conductance	Nitrate + Nitrite (ppm)	Total Sulfate (ppm)	Dissolved Iron (ppm)	Manganese (ppb)
09/03/12	0.50	6.95	-50	14.9	0.4	<0.1	<8.5	15300	112
03/14/13	1.11	6.80	227	6.2	337	NS	NS	NS	NS
07/30/14	1.09	5.4	13	14.7	3362	NS	NS	NS	NS
10/29/14	1.85	6.15	126	11.6	312	NS	NS	NS	NS
09/25/17	COULD NOT LOCATE								
12/20/17	COULD NOT LOCATE								
03/13/18	COULD NOT LOCATE								
06/07/18	2.22	6.79	-17	12.0	NM	NS	NS	NS	NS
ENFORCE MENT STANDARD = ES – Bold						10	-	-	300
PREVENTIVE ACTION LIMIT = <i>PAL - Italics</i>						2	-	-	60

(ppb) = parts per billion (ppm) = parts per million
 ns = not sampled nm = not measured
 Note: Elevations are presented in feet mean sea level (msl).

A.7 Other
Groundwater NA Indicator Results
Hunter's Corner Store Site BRRT's# 03-27-000811

Well MW-7

Date	Dissolved Oxygen (ppm)	pH	ORP	Temp (C)	Specific Conductance	Nitrate + Nitrite (ppm)	Total Sulfate (ppm)	Dissolved Iron (ppm)	Manganese (ppb)
09/03/12	0.13	6.39	136	14.6	0.5	0.3	<8.5	1710	168
03/14/13	2.86	6.37	351	6.1	1169	NS	NS	NS	NS
07/30/14	1.93	5.99	276	14.3	1932	NS	NS	NS	NS
10/29/14	2.84	7.94	374	12.0	131	NS	NS	NS	NS
09/25/17	3.97	6.74	231	19.4	1993	NS	NS	NS	NS
12/20/17	3.88	7.16	240	7.9	1162	NS	NS	NS	NS
03/13/18	4.48	9.00	183	3.8	204	NS	NS	NS	NS
06/07/18	3.57	6.18	249	9.9	NM	NS	NS	NS	NS
ENFORCE MENT STANDARD = ES - Bold						10	-	-	300
PREVENTIVE ACTION LIMIT = <i>PAL - Italics</i>						2	-	-	60

(ppb) = parts per billion (ppm) = parts per million
 ns = not sampled nm = not measured

Note: Elevations are presented in feet mean sea level (msl).

Well MW-8

Date	Dissolved Oxygen (ppm)	pH	ORP	Temp (C)	Specific Conductance	Nitrate + Nitrite (ppm)	Total Sulfate (ppm)	Dissolved Iron (ppm)	Manganese (ppb)
09/03/12	0.09	6.92	-55	14.0	1.0	<0.1	40.3	20400	1250
03/14/13	4.28	6.77	332	5.7	672	NS	NS	NS	NS
07/30/14	1.19	6.06	127	14.1	4644	NS	NS	NS	NS
10/29/14	3.68	6.98	345	11.2	399	NS	NS	NS	NS
09/25/17	5.16	6.51	244	19.6	368	NS	NS	NS	NS
12/20/17	4.22	6.73	276	7.8	918	NS	NS	NS	NS
03/13/18	6.26	9.18	184	4.4	585	NS	NS	NS	NS
06/07/18	1.87	6.50	138	10.8	NM	NS	NS	NS	NS
ENFORCE MENT STANDARD = ES - Bold						10	-	-	300
PREVENTIVE ACTION LIMIT = <i>PAL - Italics</i>						2	-	-	60

(ppb) = parts per billion (ppm) = parts per million
 ns = not sampled nm = not measured

Note: Elevations are presented in feet mean sea level (msl).

Hunter's Corner Store – Hixton: BRRTS #03-27-000811
 Free Product Levels & Recovery -- By METCO

DATE		MW-1/1R	MW-3	GALS REC./PERIOD	TOT GALS RECOVERED
09/06/11	Inches of FP	0	0	0.00	0.00
	Gals Rec. w/ Absorbent Sock	N/A	N/A		
	Gals Rec. w/ Bailer	0	0		
09/03/12	Inches of FP	0	0	0.00	0.00
	Gals Rec. w/ Absorbent Sock	N/A	N/A		
	Gals Rec. w/ Bailer	0	0		
03/14/13	Inches of FP	0.5	0	0.01	0.01
	Gals Rec. w/ Absorbent Sock	0	N/A		
	Gals Rec. w/ Bailer	0.01	0		
07/30/14	Inches of FP	0	0.25	0.18	0.19
	Gals Rec. w/ Absorbent Sock	0.17	N/A		
	Gals Rec. w/ Bailer	0	0.01		
10/29/14	Inches of FP	0	0	0.00	0.19
	Gals Rec. w/ Absorbent Sock	N/A	N/A		
	Gals Rec. w/ Bailer	0	0		
09/25/17	Inches of FP	0	1	0.06	0.25
	Gals Rec. w/ Absorbent Sock	N/A	N/A		
	Gals Rec. w/ Bailer	0	0.06		
12/20/17	Inches of FP	0	1	0.01	0.26
	Gals Rec. w/ Absorbent Sock	N/A	N/A		
	Gals Rec. w/ Bailer	0	0.01		
03/13/18	Inches of FP	0	0	0.00	0.26
	Gals Rec. w/ Absorbent Sock	N/A	N/A		
	Gals Rec. w/ Bailer	0	0		
06/07/18	Inches of FP	1.5	0.75	0.02	0.28
	Gals Rec. w/ Absorbent Sock	N/A	N/A		
	Gals Rec. w/ Bailer	0	0		

DKS Transport Services, LLC

N7349 548th Street
Menomonie, WI 54751
715-556-2604

INVOICE

12-12 20 17

CUSTOMER

JOB NAME

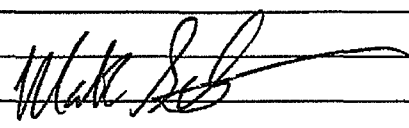
Metro 90 Stephen Doerr
709 Gillick St
La Cross WI 54603

Hunter's Cornet Store
Huxley WI

CASH CHECK # _____ **IN-HOUSE ACCOUNT**

QUANTITY		DESCRIPTION	QTY.	UNIT PRICE	AMOUNT
DATE	SHIPPED				
	1	Mobilization	1		287 70
	1	Haul soil from to Advanced Deposit - Eau Claire WI	1		108 15
				TOTAL	395 85

Thank You



Due upon receipt of invoice.
1.5% per month Service Charge (18% Annual Percentage Rate) will be added to past due accounts.

197

SIGNATURE _____

Synergy Environmental Lab,

1990 Prospect Ct., Appleton, WI 54914 *P 920-830-2455 * F 920-733-0631

STEPHEN DOERR
STEPHEN DOERR
PO BOX 339
BLAIR, WI 54616

Report Date 28-Dec-17

Project Name HUNTERS CORNER STORE
Project #

Invoice # E34072

Lab Code 5034072A
Sample ID MW-4
Sample Matrix Water
Sample Date 12/22/2017

	Result	Unit	LOD	LOQ	Dil	Method	Ext Date	Run Date	Analyst	Code
Organic										
PVOC + Naphthalene										
Benzene	< 0.27	ug/l	0.27	0.87	1	GRO95/8021	12/27/2017	12/27/2017	TCC	1
Ethylbenzene	< 0.56	ug/l	0.56	1.77	1	GRO95/8021	12/27/2017	12/27/2017	TCC	1
Methyl tert-butyl ether (MTBE)	< 0.43	ug/l	0.43	1.36	1	GRO95/8021	12/27/2017	12/27/2017	TCC	1
Naphthalene	< 1.7	ug/l	1.7	5.27	1	GRO95/8021	12/27/2017	12/27/2017	TCC	1
Toluene	< 0.33	ug/l	0.33	1.06	1	GRO95/8021	12/27/2017	12/27/2017	TCC	1
1,2,4-Trimethylbenzene	< 0.56	ug/l	0.56	1.78	1	GRO95/8021	12/27/2017	12/27/2017	TCC	1
1,3,5-Trimethylbenzene	< 0.58	ug/l	0.58	1.84	1	GRO95/8021	12/27/2017	12/27/2017	TCC	1
m&p-Xylene	< 1.1	ug/l	1.1	3.49	1	GRO95/8021	12/27/2017	12/27/2017	TCC	1
o-Xylene	< 0.61	ug/l	0.61	1.92	1	GRO95/8021	12/27/2017	12/27/2017	TCC	1

Lab Code 5034072B
Sample ID MW-8
Sample Matrix Water
Sample Date 12/22/2017

	Result	Unit	LOD	LOQ	Dil	Method	Ext Date	Run Date	Analyst	Code
Organic										
PVOC + Naphthalene										
Benzene	< 0.27	ug/l	0.27	0.87	1	GRO95/8021	12/27/2017	12/27/2017	TCC	1
Ethylbenzene	< 0.56	ug/l	0.56	1.77	1	GRO95/8021	12/27/2017	12/27/2017	TCC	1
Methyl tert-butyl ether (MTBE)	< 0.43	ug/l	0.43	1.36	1	GRO95/8021	12/27/2017	12/27/2017	TCC	1
Naphthalene	< 1.7	ug/l	1.7	5.27	1	GRO95/8021	12/27/2017	12/27/2017	TCC	1
Toluene	< 0.33	ug/l	0.33	1.06	1	GRO95/8021	12/27/2017	12/27/2017	TCC	1
1,2,4-Trimethylbenzene	< 0.56	ug/l	0.56	1.78	1	GRO95/8021	12/27/2017	12/27/2017	TCC	1
1,3,5-Trimethylbenzene	< 0.58	ug/l	0.58	1.84	1	GRO95/8021	12/27/2017	12/27/2017	TCC	1
m&p-Xylene	< 1.1	ug/l	1.1	3.49	1	GRO95/8021	12/27/2017	12/27/2017	TCC	1
o-Xylene	< 0.61	ug/l	0.61	1.92	1	GRO95/8021	12/27/2017	12/27/2017	TCC	1

Project #

Lab Code 5034072C
 Sample ID MW-7
 Sample Matrix Water
 Sample Date 12/22/2017

	Result	Unit	LOD	LOQ	Dil	Method	Ext Date	Run Date	Analyst	Code
Organic										
PVOC + Naphthalene										
Benzene	< 0.27	ug/l	0.27	0.87	1	GRO95/8021		12/27/2017	TCC	1
Ethylbenzene	< 0.56	ug/l	0.56	1.77	1	GRO95/8021		12/27/2017	TCC	1
Methyl tert-butyl ether (MTBE)	< 0.43	ug/l	0.43	1.36	1	GRO95/8021		12/27/2017	TCC	1
Naphthalene	< 1.7	ug/l	1.7	5.27	1	GRO95/8021		12/27/2017	TCC	1
Toluene	< 0.33	ug/l	0.33	1.06	1	GRO95/8021		12/27/2017	TCC	1
1,2,4-Trimethylbenzene	< 0.56	ug/l	0.56	1.78	1	GRO95/8021		12/27/2017	TCC	1
1,3,5-Trimethylbenzene	< 0.58	ug/l	0.58	1.84	1	GRO95/8021		12/27/2017	TCC	1
m&p-Xylene	< 1.1	ug/l	1.1	3.49	1	GRO95/8021		12/27/2017	TCC	1
o-Xylene	< 0.61	ug/l	0.61	1.92	1	GRO95/8021		12/27/2017	TCC	1

Lab Code 5034072D
 Sample ID MW-5
 Sample Matrix Water
 Sample Date 12/22/2017

	Result	Unit	LOD	LOQ	Dil	Method	Ext Date	Run Date	Analyst	Code
Organic										
PVOC + Naphthalene										
Benzene	< 0.27	ug/l	0.27	0.87	1	GRO95/8021		12/27/2017	TCC	1
Ethylbenzene	< 0.56	ug/l	0.56	1.77	1	GRO95/8021		12/27/2017	TCC	1
Methyl tert-butyl ether (MTBE)	< 0.43	ug/l	0.43	1.36	1	GRO95/8021		12/27/2017	TCC	1
Naphthalene	< 1.7	ug/l	1.7	5.27	1	GRO95/8021		12/27/2017	TCC	1
Toluene	< 0.33	ug/l	0.33	1.06	1	GRO95/8021		12/27/2017	TCC	1
1,2,4-Trimethylbenzene	< 0.56	ug/l	0.56	1.78	1	GRO95/8021		12/27/2017	TCC	1
1,3,5-Trimethylbenzene	< 0.58	ug/l	0.58	1.84	1	GRO95/8021		12/27/2017	TCC	1
m&p-Xylene	< 1.1	ug/l	1.1	3.49	1	GRO95/8021		12/27/2017	TCC	1
o-Xylene	< 0.61	ug/l	0.61	1.92	1	GRO95/8021		12/27/2017	TCC	1

Lab Code 5034072E
 Sample ID MW-2
 Sample Matrix Water
 Sample Date 12/22/2017

	Result	Unit	LOD	LOQ	Dil	Method	Ext Date	Run Date	Analyst	Code
Organic										
PVOC + Naphthalene										
Benzene	< 0.27	ug/l	0.27	0.87	1	GRO95/8021		12/27/2017	TCC	1
Ethylbenzene	< 0.56	ug/l	0.56	1.77	1	GRO95/8021		12/27/2017	TCC	1
Methyl tert-butyl ether (MTBE)	< 0.43	ug/l	0.43	1.36	1	GRO95/8021		12/27/2017	TCC	1
Naphthalene	< 1.7	ug/l	1.7	5.27	1	GRO95/8021		12/27/2017	TCC	1
Toluene	< 0.33	ug/l	0.33	1.06	1	GRO95/8021		12/27/2017	TCC	1
1,2,4-Trimethylbenzene	< 0.56	ug/l	0.56	1.78	1	GRO95/8021		12/27/2017	TCC	1
1,3,5-Trimethylbenzene	< 0.58	ug/l	0.58	1.84	1	GRO95/8021		12/27/2017	TCC	1
m&p-Xylene	< 1.1	ug/l	1.1	3.49	1	GRO95/8021		12/27/2017	TCC	1
o-Xylene	< 0.61	ug/l	0.61	1.92	1	GRO95/8021		12/27/2017	TCC	1

Project Name HUNTERS CORNER STORE
Project #

Invoice # E34072

Lab Code 5034072F
Sample ID MW-3
Sample Matrix Water
Sample Date 12/22/2017

	Result	Unit	LOD	LOQ	Dil	Method	Ext Date	Run Date	Analyst	Code
Organic										
PVOC + Naphthalene										
Benzene	1710	ug/l	13.5	43.5	50	GRO95/8021		12/27/2017	TCC	1
Ethylbenzene	1900	ug/l	28	88.5	50	GRO95/8021		12/27/2017	TCC	1
Methyl tert-butyl ether (MTBE)	< 21.5	ug/l	21.5	68	50	GRO95/8021		12/27/2017	TCC	1
Naphthalene	540	ug/l	85	263.5	50	GRO95/8021		12/27/2017	TCC	1
Toluene	3030	ug/l	16.5	53	50	GRO95/8021		12/27/2017	TCC	1
1,2,4-Trimethylbenzene	1820	ug/l	28	89	50	GRO95/8021		12/27/2017	TCC	1
1,3,5-Trimethylbenzene	560	ug/l	29	92	50	GRO95/8021		12/27/2017	TCC	1
m&p-Xylene	5800	ug/l	55	174.5	50	GRO95/8021		12/27/2017	TCC	1
o-Xylene	2400	ug/l	30.5	96	50	GRO95/8021		12/27/2017	TCC	1

Lab Code 5034072G
Sample ID MW-1R
Sample Matrix Water
Sample Date 12/22/2017

	Result	Unit	LOD	LOQ	Dil	Method	Ext Date	Run Date	Analyst	Code
Organic										
PVOC + Naphthalene										
Benzene	2630	ug/l	13.5	43.5	50	GRO95/8021		12/27/2017	TCC	1
Ethylbenzene	1460	ug/l	28	88.5	50	GRO95/8021		12/27/2017	TCC	1
Methyl tert-butyl ether (MTBE)	< 21.5	ug/l	21.5	68	50	GRO95/8021		12/27/2017	TCC	1
Naphthalene	380	ug/l	85	263.5	50	GRO95/8021		12/27/2017	TCC	1
Toluene	5500	ug/l	16.5	53	50	GRO95/8021		12/27/2017	TCC	1
1,2,4-Trimethylbenzene	1350	ug/l	28	89	50	GRO95/8021		12/27/2017	TCC	1
1,3,5-Trimethylbenzene	470	ug/l	29	92	50	GRO95/8021		12/27/2017	TCC	1
m&p-Xylene	4200	ug/l	55	174.5	50	GRO95/8021		12/27/2017	TCC	1
o-Xylene	1700	ug/l	30.5	96	50	GRO95/8021		12/27/2017	TCC	1

Lab Code 5034072H
Sample ID TB
Sample Matrix Water
Sample Date 12/22/2017

	Result	Unit	LOD	LOQ	Dil	Method	Ext Date	Run Date	Analyst	Code
Organic										
PVOC + Naphthalene										
Benzene	< 0.27	ug/l	0.27	0.87	1	GRO95/8021		12/27/2017	TCC	1
Ethylbenzene	< 0.56	ug/l	0.56	1.77	1	GRO95/8021		12/27/2017	TCC	1
Methyl tert-butyl ether (MTBE)	< 0.43	ug/l	0.43	1.36	1	GRO95/8021		12/27/2017	TCC	1
Naphthalene	< 1.7	ug/l	1.7	5.27	1	GRO95/8021		12/27/2017	TCC	1
Toluene	< 0.33	ug/l	0.33	1.06	1	GRO95/8021		12/27/2017	TCC	1
1,2,4-Trimethylbenzene	< 0.56	ug/l	0.56	1.78	1	GRO95/8021		12/27/2017	TCC	1
1,3,5-Trimethylbenzene	< 0.58	ug/l	0.58	1.84	1	GRO95/8021		12/27/2017	TCC	1
m&p-Xylene	< 1.1	ug/l	1.1	3.49	1	GRO95/8021		12/27/2017	TCC	1
o-Xylene	< 0.61	ug/l	0.61	1.92	1	GRO95/8021		12/27/2017	TCC	1

Project Name HUNTERS CORNER STORE
Project #

Invoice # E34072

"J" Flag: Analyte detected between LOD and LOQ

LOD Limit of Detection

LOQ Limit of Quantitation

Code ***Comment***

1 Laboratory QC within limits.

All solid sample results reported on a dry weight basis unless otherwise indicated. All LOD's and LOQ's are adjusted for dilutions but not dry weight. Subcontracted results are denoted by SUB in the analyst field.

Authorized Signature

Michael Ricker

CHAIN OF STUDY RECORD

Synergy

Environmental Lab, Inc.

Chain # No 3387

Page 1 of 1

Sample Handling Request

Rush Analysis Date Required _____
(Rushes accepted only with prior authorization)

Normal Turn Around

1990 Prospect Ct. • Appleton, WI 54914
920-830-2455 • FAX 920-733-0631

Account No. :	Quote No.:
Project #:	
Sampler: (signature) <i>Jim Jim</i>	

Project (Name / Location): <i>Hunter's Corner Store / Hixton</i>	
Reports To: <i>Stephen Doerr</i>	Invoice To: <i>Stephen Doerr</i>
Company	Company <i>C/O METCO</i>
Address <i>P.O. Box 339</i>	Address <i>709 Gillerte St, Ste. 3</i>
City State Zip <i>Blair, WI 54616</i>	City State Zip <i>La Crosse, WI 54603</i>
Phone	Phone
FAX	FAX

Analysis Requested												Other Analysis				
DRO (Mod DRO Sep 95)	GRO (Mod GRO Sep 95)	LEAD	NITRATE/NITRITE	OIL & GREASE	PAH (EPA 8270)	PCB	PVOC (EPA 8021)	PVOC + NAPHTHALENE	SULFATE	TOTAL SUSPENDED SOLIDS	VOC DW (EPA 524.2)	VOC (EPA 8260)	B-PARA METALS	PID/ FID		
								X								
								X								
								X								
								X								
								X								
								X								
								X								
								X								

Lab ID	Sample I.D.	Collection Date	Time	Comp	Grab	Filtered Y/N	No. of Containers	Sample Type (Matrix)*	Preservation
<i>E057072A</i>	<i>MW-4</i>	<i>12-20</i>	<i>835</i>				<i>3</i>	<i>GW</i>	<i>ITCL</i>
<i>B</i>	<i>MW-8</i>		<i>900</i>						
<i>S</i>	<i>MW-7</i>		<i>925</i>						
<i>D</i>	<i>MW-5</i>		<i>950</i>						
<i>E</i>	<i>MW-2</i>		<i>1055</i>						
<i>F</i>	<i>MW-3</i>		<i>1130</i>						
<i>G</i>	<i>MW-1R</i>	<i>✓</i>	<i>1150</i>				<i>✓</i>	<i>✓</i>	<i>✓</i>
<i>H</i>	<i>TB</i>						<i>✓</i>		<i>✓</i>

Comments/Special Instructions (*Specify groundwater "GW", Drinking Water "DW", Waste Water "WW", Soil "S", Air "A", Oil, Sludge etc.)

Lab to send copy of report to METCO / Jason P. (Invoice to METCO)
** ute rates apply * Agent Status*

Sample Integrity - To be completed by receiving lab Method of Shipment: <i>C</i> Temp. of Temp. Blank: _____ °C On Ice: <input checked="" type="checkbox"/> Cooler Seal Intact upon receipt: <input checked="" type="checkbox"/> Yes <input type="checkbox"/> No	Relinquished By: (sign) <i>Jim Jim</i>	Time	Date	Received By: (sign)	Time	Date
		<i>4:00 pm</i>	<i>12-20-17</i>			
	Received in Laboratory By: <i>Christina</i>	Time: <i>8:00</i>	Date: <i>12/22/17</i>			

Synergy Environmental Lab,

1990 Prospect Ct., Appleton, WI 54914 *P 920-830-2455 * F 920-733-0631

STEPHEN DOER
STEPHEN DOERR
PO BOX 339
BLAIR, WI 54616

Report Date 21-Mar-18

Project Name HUNTERS CORNER STORE
Project #

Invoice # E34350

Lab Code 5034350A...
Sample ID MW-4
Sample Matrix Water
Sample Date 3/13/2018

	Result	Unit	LOD	LOQ	Dil	Method	Ext Date	Run Date	Analyst	Code
Organic										
PVOC + Naphthalene										
Benzene	< 0.22	ug/l	0.22	0.71	1	GRO95/8021	3/19/2018	3/19/2018	CJR	1
Ethylbenzene	< 0.26	ug/l	0.26	0.83	1	GRO95/8021	3/19/2018	3/19/2018	CJR	1
Methyl tert-butyl ether (MTBE)	< 0.28	ug/l	0.28	0.89	1	GRO95/8021	3/19/2018	3/19/2018	CJR	1
Naphthalene	< 2.1	ug/l	2.1	6.65	1	GRO95/8021	3/19/2018	3/19/2018	CJR	1
Toluene	< 0.19	ug/l	0.19	0.6	1	GRO95/8021	3/19/2018	3/19/2018	CJR	1
1,2,4-Trimethylbenzene	< 0.8	ug/l	0.8	2.55	1	GRO95/8021	3/19/2018	3/19/2018	CJR	1
1,3,5-Trimethylbenzene	< 0.63	ug/l	0.63	2	1	GRO95/8021	3/19/2018	3/19/2018	CJR	1
m&p-Xylene	< 0.43	ug/l	0.43	1.38	1	GRO95/8021	3/19/2018	3/19/2018	CJR	1
o-Xylene	< 0.29	ug/l	0.29	0.93	1	GRO95/8021	3/19/2018	3/19/2018	CJR	1

Lab Code 5034350B
Sample ID MW-8
Sample Matrix Water
Sample Date 3/13/2018

	Result	Unit	LOD	LOQ	Dil	Method	Ext Date	Run Date	Analyst	Code
Organic										
PVOC + Naphthalene										
Benzene	< 0.22	ug/l	0.22	0.71	1	GRO95/8021	3/19/2018	3/19/2018	CJR	1
Ethylbenzene	< 0.26	ug/l	0.26	0.83	1	GRO95/8021	3/19/2018	3/19/2018	CJR	1
Methyl tert-butyl ether (MTBE)	< 0.28	ug/l	0.28	0.89	1	GRO95/8021	3/19/2018	3/19/2018	CJR	1
Naphthalene	< 2.1	ug/l	2.1	6.65	1	GRO95/8021	3/19/2018	3/19/2018	CJR	1
Toluene	< 0.19	ug/l	0.19	0.6	1	GRO95/8021	3/19/2018	3/19/2018	CJR	1
1,2,4-Trimethylbenzene	< 0.8	ug/l	0.8	2.55	1	GRO95/8021	3/19/2018	3/19/2018	CJR	1
1,3,5-Trimethylbenzene	< 0.63	ug/l	0.63	2	1	GRO95/8021	3/19/2018	3/19/2018	CJR	1
m&p-Xylene	< 0.43	ug/l	0.43	1.38	1	GRO95/8021	3/19/2018	3/19/2018	CJR	1
o-Xylene	< 0.29	ug/l	0.29	0.93	1	GRO95/8021	3/19/2018	3/19/2018	CJR	1

Project Name HUNTERS CORNER STORE
Project #

Invoice # E34350

Lab Code 5034350C
Sample ID MW-7
Sample Matrix Water
Sample Date 3/13/2018

	Result	Unit	LOD	LOQ	Dil	Method	Ext Date	Run Date	Analyst	Code
Organic										
PVOC + Naphthalene										
Benzene	< 0.22	ug/l	0.22	0.71	1	GRO95/8021		3/19/2018	CJR	1
Ethylbenzene	< 0.26	ug/l	0.26	0.83	1	GRO95/8021		3/19/2018	CJR	1
Methyl tert-butyl ether (MTBE)	< 0.28	ug/l	0.28	0.89	1	GRO95/8021		3/19/2018	CJR	1
Naphthalene	< 2.1	ug/l	2.1	6.65	1	GRO95/8021		3/19/2018	CJR	1
Toluene	< 0.19	ug/l	0.19	0.6	1	GRO95/8021		3/19/2018	CJR	1
1,2,4-Trimethylbenzene	< 0.8	ug/l	0.8	2.55	1	GRO95/8021		3/19/2018	CJR	1
1,3,5-Trimethylbenzene	< 0.63	ug/l	0.63	2	1	GRO95/8021		3/19/2018	CJR	1
m&p-Xylene	< 0.43	ug/l	0.43	1.38	1	GRO95/8021		3/19/2018	CJR	1
o-Xylene	< 0.29	ug/l	0.29	0.93	1	GRO95/8021		3/19/2018	CJR	1

Lab Code 5034350D
Sample ID MW-5
Sample Matrix Water
Sample Date 3/13/2018

	Result	Unit	LOD	LOQ	Dil	Method	Ext Date	Run Date	Analyst	Code
Organic										
PVOC + Naphthalene										
Benzene	< 0.22	ug/l	0.22	0.71	1	GRO95/8021		3/19/2018	CJR	1
Ethylbenzene	< 0.26	ug/l	0.26	0.83	1	GRO95/8021		3/19/2018	CJR	1
Methyl tert-butyl ether (MTBE)	< 0.28	ug/l	0.28	0.89	1	GRO95/8021		3/19/2018	CJR	1
Naphthalene	< 2.1	ug/l	2.1	6.65	1	GRO95/8021		3/19/2018	CJR	1
Toluene	< 0.19	ug/l	0.19	0.6	1	GRO95/8021		3/19/2018	CJR	1
1,2,4-Trimethylbenzene	< 0.8	ug/l	0.8	2.55	1	GRO95/8021		3/19/2018	CJR	1
1,3,5-Trimethylbenzene	< 0.63	ug/l	0.63	2	1	GRO95/8021		3/19/2018	CJR	1
m&p-Xylene	< 0.43	ug/l	0.43	1.38	1	GRO95/8021		3/19/2018	CJR	1
o-Xylene	< 0.29	ug/l	0.29	0.93	1	GRO95/8021		3/19/2018	CJR	1

Lab Code 5034350E
Sample ID MW-2
Sample Matrix Water
Sample Date 3/13/2018

	Result	Unit	LOD	LOQ	Dil	Method	Ext Date	Run Date	Analyst	Code
Organic										
PVOC + Naphthalene										
Benzene	< 0.22	ug/l	0.22	0.71	1	GRO95/8021		3/19/2018	CJR	1
Ethylbenzene	< 0.26	ug/l	0.26	0.83	1	GRO95/8021		3/19/2018	CJR	1
Methyl tert-butyl ether (MTBE)	< 0.28	ug/l	0.28	0.89	1	GRO95/8021		3/19/2018	CJR	1
Naphthalene	< 2.1	ug/l	2.1	6.65	1	GRO95/8021		3/19/2018	CJR	1
Toluene	< 0.19	ug/l	0.19	0.6	1	GRO95/8021		3/19/2018	CJR	1
1,2,4-Trimethylbenzene	< 0.8	ug/l	0.8	2.55	1	GRO95/8021		3/19/2018	CJR	1
1,3,5-Trimethylbenzene	< 0.63	ug/l	0.63	2	1	GRO95/8021		3/19/2018	CJR	1
m&p-Xylene	< 0.43	ug/l	0.43	1.38	1	GRO95/8021		3/19/2018	CJR	1
o-Xylene	< 0.29	ug/l	0.29	0.93	1	GRO95/8021		3/19/2018	CJR	1

Project Name HUNTERS CORNER STORE
 Project #

Invoice # E34350

Lab Code 5034350F
 Sample ID MW-3
 Sample Matrix Water
 Sample Date 3/13/2018

	Result	Unit	LOD	LOQ	Dil	Method	Ext Date	Run Date	Analyst	Code
Organic										
PVOC + Naphthalene										
Benzene	1800	ug/l	11	35.5	50	GRO95/8021		3/20/2018	CJR	1
Ethylbenzene	1790	ug/l	13	41.5	50	GRO95/8021		3/20/2018	CJR	1
Methyl tert-butyl ether (MTBE)	< 14	ug/l	14	44.5	50	GRO95/8021		3/20/2018	CJR	1
Naphthalene	370	ug/l	105	332.5	50	GRO95/8021		3/20/2018	CJR	1
Toluene	3500	ug/l	9.5	30	50	GRO95/8021		3/20/2018	CJR	1
1,2,4-Trimethylbenzene	1650	ug/l	40	127.5	50	GRO95/8021		3/20/2018	CJR	1
1,3,5-Trimethylbenzene	480	ug/l	31.5	100	50	GRO95/8021		3/20/2018	CJR	1
m&p-Xylene	5500	ug/l	21.5	69	50	GRO95/8021		3/20/2018	CJR	1
o-Xylene	2170	ug/l	14.5	46.5	50	GRO95/8021		3/20/2018	CJR	1

Lab Code 5034350G
 Sample ID MW-1R
 Sample Matrix Water
 Sample Date 3/13/2018

	Result	Unit	LOD	LOQ	Dil	Method	Ext Date	Run Date	Analyst	Code
Organic										
PVOC + Naphthalene										
Benzene	1640	ug/l	11	35.5	50	GRO95/8021		3/20/2018	CJR	1
Ethylbenzene	1100	ug/l	13	41.5	50	GRO95/8021		3/20/2018	CJR	1
Methyl tert-butyl ether (MTBE)	< 14	ug/l	14	44.5	50	GRO95/8021		3/20/2018	CJR	1
Naphthalene	286 "J"	ug/l	105	332.5	50	GRO95/8021		3/20/2018	CJR	1
Toluene	3900	ug/l	9.5	30	50	GRO95/8021		3/20/2018	CJR	1
1,2,4-Trimethylbenzene	1280	ug/l	40	127.5	50	GRO95/8021		3/20/2018	CJR	1
1,3,5-Trimethylbenzene	420	ug/l	31.5	100	50	GRO95/8021		3/20/2018	CJR	1
m&p-Xylene	3500	ug/l	21.5	69	50	GRO95/8021		3/20/2018	CJR	1
o-Xylene	1290	ug/l	14.5	46.5	50	GRO95/8021		3/20/2018	CJR	1

Lab Code 5034350H
 Sample ID TB
 Sample Matrix Water
 Sample Date 3/13/2018

	Result	Unit	LOD	LOQ	Dil	Method	Ext Date	Run Date	Analyst	Code
Organic										
PVOC + Naphthalene										
Benzene	< 0.22	ug/l	0.22	0.71	1	GRO95/8021		3/19/2018	CJR	1
Ethylbenzene	< 0.26	ug/l	0.26	0.83	1	GRO95/8021		3/19/2018	CJR	1
Methyl tert-butyl ether (MTBE)	< 0.28	ug/l	0.28	0.89	1	GRO95/8021		3/19/2018	CJR	1
Naphthalene	< 2.1	ug/l	2.1	6.65	1	GRO95/8021		3/19/2018	CJR	1
Toluene	< 0.19	ug/l	0.19	0.6	1	GRO95/8021		3/19/2018	CJR	1
1,2,4-Trimethylbenzene	< 0.8	ug/l	0.8	2.55	1	GRO95/8021		3/19/2018	CJR	1
1,3,5-Trimethylbenzene	< 0.63	ug/l	0.63	2	1	GRO95/8021		3/19/2018	CJR	1
m&p-Xylene	< 0.43	ug/l	0.43	1.38	1	GRO95/8021		3/19/2018	CJR	1
o-Xylene	< 0.29	ug/l	0.29	0.93	1	GRO95/8021		3/19/2018	CJR	1

Project Name HUNTERS CORNER STORE
Project #

Invoice # E34350

"J" Flag: Analyte detected between LOD and LOQ

LOD Limit of Detection

LOQ Limit of Quantitation

<i>Code</i>	<i>Comment</i>
1	Laboratory QC within limits.

All solid sample results reported on a dry weight basis unless otherwise indicated. All LOD's and LOQ's are adjusted for dilutions but not dry weight. Subcontracted results are denoted by SUB in the analyst field.

Authorized Signature

Michael Ricker

CHAIN OF CUSTODY RECORD

Synergy

Environmental Lab, Inc.

Chain # No 297

Page 1 of 1

Lab ID: #
 Account No.: _____ Quote No.: _____
 Project #:
 Sampler: (signature) *Jon Fern*

1990 Prospect Ct. • Appleton, WI 54914
 920-830-2455 • FAX 920-733-0631

Sample Handling Request
 Rush Analysis Date Required _____
 (Rushes accepted only with prior authorization)
 Normal Turn Around

Project (Name / Location): *Hunter's Corner Store / Hixton*
 Reports To: *Stephen Doers* Invoice To: *Stephen Doers*
 Company: _____ Company: *C/O METCO*
 Address: *P.O. Box 339* Address: *709 Gillette St, Ste. 3*
 City State Zip: *Blair, WI 54616* City State Zip: *La Crosse, WI 54603*
 Phone: _____ Phone: _____
 FAX: _____ FAX: _____

Analysis Requested		Other Analysis												
DRO (Mod DRO Sep 95)	GRO (Mod GRO Sep 96)	LEAD	NITRATE/NITRITE	OIL & GREASE	PAH (EPA 8270)	PCB	PVOC (EPA 8021)	PVOC + NAPHTHALENE	SULFATE	TOTAL SUSPENDED SOLIDS	VOC DW (EPA 542.2)	VOC (EPA 8260)	8-PCRA METALS	FID/ FID
								X						
								X						
								X						
								X						
								X						
								X						
								X						
								X						
								X						
								X						

Lab ID	Sample I.D.	Collection Date	Time	Comp	Grab	Filtered Y/N	No. of Containers	Sample Type (Matrix)*	Preservation
<i>S031350A</i>	<i>MW-4</i>	<i>3-13</i>	<i>920</i>				<i>3</i>	<i>GW</i>	<i>HCL</i>
<i>B</i>	<i>MW-8</i>		<i>945</i>						
<i>C</i>	<i>MW-7</i>		<i>910</i>						
<i>D</i>	<i>MW-5</i>		<i>935</i>						
<i>E</i>	<i>MW-2</i>		<i>1000</i>						
<i>F</i>	<i>MW-3</i>		<i>1025</i>						
<i>G</i>	<i>MW-1R</i>	<i>✓</i>	<i>1050</i>						
<i>H</i>	<i>TB</i>								

Comments/Special Instructions (*Specify groundwater "GW", Drinking Water "DW", Waste Water "WW", Soil "S", Air "A", Oil, Sludge etc.)
Lab to send copy of report to METCO/Jason P. (Invoice to METCO)
** UTC rates apply*
** Agent Status*

Sample Integrity: To be completed by receiving lab.
 Method of Shipment: *Co*
 Temp. of Temp. Blank: _____ °C On Ice:
 Cooler seal intact upon receipt: Yes No

Relinquished By: (sign) *Jon Fern* Time: *1:30 PM* Date: *3-13-18*
 Received By: (sign) _____ Time: _____ Date: _____
 Received in Laboratory By: *Chris Jones* Time: *2:00* Date: *3/14/18*

Synergy Environmental Lab,

1990 Prospect Ct., Appleton, WI 54914 *P 920-830-2455 * F 920-733-0631

STEPHEN DOERR
STEPHEN DOERR
PO BOX 339
BLAIR, WI 54616

Report Date 18-Jun-18

Project Name HUNTERS CORNER STORE
Project #

Invoice # E34768

Lab Code 5034768A
Sample ID MW-4
Sample Matrix Water
Sample Date 6/7/2018

	Result	Unit	LOD	LOQ	Dil	Method	Ext Date	Run Date	Analyst	Code
Organic										
PVOC + Naphthalene										
Benzene	< 0.22	ug/l	0.22	0.69	1	GRO95/8021	6/15/2018	6/15/2018	CJR	1
Ethylbenzene	< 0.53	ug/l	0.53	1.69	1	GRO95/8021	6/15/2018	6/15/2018	CJR	1
Methyl tert-butyl ether (MTBE)	< 0.57	ug/l	0.57	1.82	1	GRO95/8021	6/15/2018	6/15/2018	CJR	1
Naphthalene	< 1.7	ug/l	1.7	5.38	1	GRO95/8021	6/15/2018	6/15/2018	CJR	1
Toluene	< 0.45	ug/l	0.45	1.45	1	GRO95/8021	6/15/2018	6/15/2018	CJR	1
1,2,4-Trimethylbenzene	< 0.73	ug/l	0.73	2.33	1	GRO95/8021	6/15/2018	6/15/2018	CJR	1
1,3,5-Trimethylbenzene	< 0.75	ug/l	0.75	2.39	1	GRO95/8021	6/15/2018	6/15/2018	CJR	1
m&p-Xylene	< 1	ug/l	1	3.17	1	GRO95/8021	6/15/2018	6/15/2018	CJR	1
o-Xylene	< 0.58	ug/l	0.58	1.84	1	GRO95/8021	6/15/2018	6/15/2018	CJR	1

Lab Code 5034768B
Sample ID MW-8
Sample Matrix Water
Sample Date 6/7/2018

	Result	Unit	LOD	LOQ	Dil	Method	Ext Date	Run Date	Analyst	Code
Organic										
PVOC + Naphthalene										
Benzene	< 0.22	ug/l	0.22	0.69	1	GRO95/8021	6/15/2018	6/15/2018	CJR	1
Ethylbenzene	< 0.53	ug/l	0.53	1.69	1	GRO95/8021	6/15/2018	6/15/2018	CJR	1
Methyl tert-butyl ether (MTBE)	< 0.57	ug/l	0.57	1.82	1	GRO95/8021	6/15/2018	6/15/2018	CJR	1
Naphthalene	< 1.7	ug/l	1.7	5.38	1	GRO95/8021	6/15/2018	6/15/2018	CJR	1
Toluene	< 0.45	ug/l	0.45	1.45	1	GRO95/8021	6/15/2018	6/15/2018	CJR	1
1,2,4-Trimethylbenzene	< 0.73	ug/l	0.73	2.33	1	GRO95/8021	6/15/2018	6/15/2018	CJR	1
1,3,5-Trimethylbenzene	< 0.75	ug/l	0.75	2.39	1	GRO95/8021	6/15/2018	6/15/2018	CJR	1
m&p-Xylene	< 1	ug/l	1	3.17	1	GRO95/8021	6/15/2018	6/15/2018	CJR	1
o-Xylene	< 0.58	ug/l	0.58	1.84	1	GRO95/8021	6/15/2018	6/15/2018	CJR	1

Project Name HUNTERS CORNER STORE
Project #

Invoice # E34768

Lab Code 5034768C
Sample ID MW-7
Sample Matrix Water
Sample Date 6/7/2018

	Result	Unit	LOD	LOQ	Dil	Method	Ext Date	Run Date	Analyst	Code
Organic										
PVOC + Naphthalene										
Benzene	< 0.22	ug/l	0.22	0.69	1	GRO95/8021	6/15/2018	6/15/2018	CJR	1
Ethylbenzene	< 0.53	ug/l	0.53	1.69	1	GRO95/8021	6/15/2018	6/15/2018	CJR	1
Methyl tert-butyl ether (MTBE)	< 0.57	ug/l	0.57	1.82	1	GRO95/8021	6/15/2018	6/15/2018	CJR	1
Naphthalene	< 1.7	ug/l	1.7	5.38	1	GRO95/8021	6/15/2018	6/15/2018	CJR	1
Toluene	< 0.45	ug/l	0.45	1.45	1	GRO95/8021	6/15/2018	6/15/2018	CJR	1
1,2,4-Trimethylbenzene	< 0.73	ug/l	0.73	2.33	1	GRO95/8021	6/15/2018	6/15/2018	CJR	1
1,3,5-Trimethylbenzene	< 0.75	ug/l	0.75	2.39	1	GRO95/8021	6/15/2018	6/15/2018	CJR	1
m&p-Xylene	< 1	ug/l	1	3.17	1	GRO95/8021	6/15/2018	6/15/2018	CJR	1
o-Xylene	< 0.58	ug/l	0.58	1.84	1	GRO95/8021	6/15/2018	6/15/2018	CJR	1

Lab Code 5034768D
Sample ID MW-5
Sample Matrix Water
Sample Date 6/7/2018

	Result	Unit	LOD	LOQ	Dil	Method	Ext Date	Run Date	Analyst	Code
Organic										
PVOC + Naphthalene										
Benzene	< 0.22	ug/l	0.22	0.69	1	GRO95/8021	6/15/2018	6/15/2018	CJR	1
Ethylbenzene	< 0.53	ug/l	0.53	1.69	1	GRO95/8021	6/15/2018	6/15/2018	CJR	1
Methyl tert-butyl ether (MTBE)	< 0.57	ug/l	0.57	1.82	1	GRO95/8021	6/15/2018	6/15/2018	CJR	1
Naphthalene	< 1.7	ug/l	1.7	5.38	1	GRO95/8021	6/15/2018	6/15/2018	CJR	1
Toluene	< 0.45	ug/l	0.45	1.45	1	GRO95/8021	6/15/2018	6/15/2018	CJR	1
1,2,4-Trimethylbenzene	< 0.73	ug/l	0.73	2.33	1	GRO95/8021	6/15/2018	6/15/2018	CJR	1
1,3,5-Trimethylbenzene	< 0.75	ug/l	0.75	2.39	1	GRO95/8021	6/15/2018	6/15/2018	CJR	1
m&p-Xylene	< 1	ug/l	1	3.17	1	GRO95/8021	6/15/2018	6/15/2018	CJR	1
o-Xylene	< 0.58	ug/l	0.58	1.84	1	GRO95/8021	6/15/2018	6/15/2018	CJR	1

Lab Code 5034768E
Sample ID MW-2
Sample Matrix Water
Sample Date 6/7/2018

	Result	Unit	LOD	LOQ	Dil	Method	Ext Date	Run Date	Analyst	Code
Organic										
PVOC + Naphthalene										
Benzene	< 0.22	ug/l	0.22	0.69	1	GRO95/8021	6/15/2018	6/15/2018	CJR	1
Ethylbenzene	< 0.53	ug/l	0.53	1.69	1	GRO95/8021	6/15/2018	6/15/2018	CJR	1
Methyl tert-butyl ether (MTBE)	< 0.57	ug/l	0.57	1.82	1	GRO95/8021	6/15/2018	6/15/2018	CJR	1
Naphthalene	< 1.7	ug/l	1.7	5.38	1	GRO95/8021	6/15/2018	6/15/2018	CJR	1
Toluene	< 0.45	ug/l	0.45	1.45	1	GRO95/8021	6/15/2018	6/15/2018	CJR	1
1,2,4-Trimethylbenzene	< 0.73	ug/l	0.73	2.33	1	GRO95/8021	6/15/2018	6/15/2018	CJR	1
1,3,5-Trimethylbenzene	< 0.75	ug/l	0.75	2.39	1	GRO95/8021	6/15/2018	6/15/2018	CJR	1
m&p-Xylene	< 1	ug/l	1	3.17	1	GRO95/8021	6/15/2018	6/15/2018	CJR	1
o-Xylene	< 0.58	ug/l	0.58	1.84	1	GRO95/8021	6/15/2018	6/15/2018	CJR	1

Project Name HUNTERS CORNER STORE
 Project #

Invoice # E34768

Lab Code 5034768F
 Sample ID MW-6
 Sample Matrix Water
 Sample Date 6/7/2018

	Result	Unit	LOD	LOQ	Dil	Method	Ext Date	Run Date	Analyst	Code
Organic										
PVOC + Naphthalene										
Benzene	7.0	ug/l	2.2	6.9	10	GRO95/8021		6/16/2018	CJR	1
Ethylbenzene	25.8	ug/l	5.3	16.9	10	GRO95/8021		6/16/2018	CJR	1
Methyl tert-butyl ether (MTBE)	< 5.7	ug/l	5.7	18.2	10	GRO95/8021		6/16/2018	CJR	1
Naphthalene	< 17	ug/l	17	53.8	10	GRO95/8021		6/16/2018	CJR	1
Toluene	19.4	ug/l	4.5	14.5	10	GRO95/8021		6/16/2018	CJR	1
1,2,4-Trimethylbenzene	122	ug/l	7.3	23.3	10	GRO95/8021		6/16/2018	CJR	1
1,3,5-Trimethylbenzene	56	ug/l	7.5	23.9	10	GRO95/8021		6/16/2018	CJR	1
m&p-Xylene	107	ug/l	10	31.7	10	GRO95/8021		6/16/2018	CJR	1
o-Xylene	37	ug/l	5.8	18.4	10	GRO95/8021		6/16/2018	CJR	1

Lab Code 5034768G
 Sample ID MW-1R
 Sample Matrix Water
 Sample Date 6/7/2018

	Result	Unit	LOD	LOQ	Dil	Method	Ext Date	Run Date	Analyst	Code
Organic										
PVOC + Naphthalene										
Benzene	3020	ug/l	11	34.5	50	GRO95/8021		6/16/2018	CJR	1
Ethylbenzene	1820	ug/l	26.5	84.5	50	GRO95/8021		6/16/2018	CJR	1
Methyl tert-butyl ether (MTBE)	< 28.5	ug/l	28.5	91	50	GRO95/8021		6/16/2018	CJR	1
Naphthalene	380	ug/l	85	269	50	GRO95/8021		6/16/2018	CJR	1
Toluene	7700	ug/l	22.5	72.5	50	GRO95/8021		6/16/2018	CJR	1
1,2,4-Trimethylbenzene	1820	ug/l	36.5	116.5	50	GRO95/8021		6/16/2018	CJR	1
1,3,5-Trimethylbenzene	580	ug/l	37.5	119.5	50	GRO95/8021		6/16/2018	CJR	1
m&p-Xylene	5600	ug/l	50	158.5	50	GRO95/8021		6/16/2018	CJR	1
o-Xylene	1910	ug/l	29	92	50	GRO95/8021		6/16/2018	CJR	1

Lab Code 5034768H
 Sample ID MW-3
 Sample Matrix Water
 Sample Date 6/7/2018

	Result	Unit	LOD	LOQ	Dil	Method	Ext Date	Run Date	Analyst	Code
Organic										
PVOC + Naphthalene										
Benzene	2330	ug/l	11	34.5	50	GRO95/8021		6/16/2018	CJR	1
Ethylbenzene	1900	ug/l	26.5	84.5	50	GRO95/8021		6/16/2018	CJR	1
Methyl tert-butyl ether (MTBE)	< 28.5	ug/l	28.5	91	50	GRO95/8021		6/16/2018	CJR	1
Naphthalene	530	ug/l	85	269	50	GRO95/8021		6/16/2018	CJR	1
Toluene	2070	ug/l	22.5	72.5	50	GRO95/8021		6/16/2018	CJR	1
1,2,4-Trimethylbenzene	2170	ug/l	36.5	116.5	50	GRO95/8021		6/16/2018	CJR	1
1,3,5-Trimethylbenzene	650	ug/l	37.5	119.5	50	GRO95/8021		6/16/2018	CJR	1
m&p-Xylene	6000	ug/l	50	158.5	50	GRO95/8021		6/16/2018	CJR	1
o-Xylene	2260	ug/l	29	92	50	GRO95/8021		6/16/2018	CJR	1

Project Name HUNTERS CORNER STORE
 Project #

Invoice # E34768

Lab Code 5034768I
 Sample ID TB
 Sample Matrix Water
 Sample Date 6/7/2018

	Result	Unit	LOD	LOQ	Dil	Method	Ext Date	Run Date	Analyst	Code
Organic										
PVOC + Naphthalene										
Benzene	< 0.22	ug/l	0.22	0.69	1	GRO95/8021		6/15/2018	CJR	1
Ethylbenzene	< 0.53	ug/l	0.53	1.69	1	GRO95/8021		6/15/2018	CJR	1
Methyl tert-butyl ether (MTBE)	< 0.57	ug/l	0.57	1.82	1	GRO95/8021		6/15/2018	CJR	1
Naphthalene	< 1.7	ug/l	1.7	5.38	1	GRO95/8021		6/15/2018	CJR	1
Toluene	< 0.45	ug/l	0.45	1.45	1	GRO95/8021		6/15/2018	CJR	1
1,2,4-Trimethylbenzene	< 0.73	ug/l	0.73	2.33	1	GRO95/8021		6/15/2018	CJR	1
1,3,5-Trimethylbenzene	< 0.75	ug/l	0.75	2.39	1	GRO95/8021		6/15/2018	CJR	1
m&p-Xylene	< 1	ug/l	1	3.17	1	GRO95/8021		6/15/2018	CJR	1
o-Xylene	< 0.58	ug/l	0.58	1.84	1	GRO95/8021		6/15/2018	CJR	1

"J" Flag: Analyte detected between LOD and LOQ

LOD Limit of Detection

LOQ Limit of Quantitation

Code **Comment**

1 Laboratory QC within limits.

All solid sample results reported on a dry weight basis unless otherwise indicated. All LOD's and LOQ's are adjusted for dilutions but not dry weight. Subcontracted results are denoted by SUB in the analyst field.

Authorized Signature

Michael Ricker

Synergy

Chain # N^o 312

Page 1 of 1

Environmental Lab, Inc.

1990 Prospect Ct. • Appleton, WI 54914
920-830-2455 • FAX 920-733-0631

Sample Handling Request

Rush Analysis Date Required _____
(Rushes accepted only with prior authorization)

Normal Turn Around

Lab ID: _____
Account No.: _____ Quote No.: _____
Project #: _____
Sampler (signature): Tyla Woodke

Project (Name / Location): Hunters Corner Store (Hixton, WI)
Reports To: Stephen Doerr Invoice To: Stephen Doerr
Company: _____ Company: YO METCO
Address: P.O. Box 339 Address: 709 Gillette Street, Ste. 3
City/State/Zip: Blair, WI 54616 City/State/Zip: La Crosse, WI 54603
Phone: _____ Phone: _____
FAX: _____ FAX: _____

Analysis Requested

Other Analysis

Lab ID	Sample I.D.	Collection Date	Time	Comp	Grab	Filtered Y/N	No. of Containers	Sample Type (Matrix)*	Preservation	DRO (Mod DRO Sep 95)	GRO (Mod GRO Sep 95)	LEAD	NITRATE/NITRITE	OIL & GREASE	PAH (EPA 8270)	PCB	PVOC (EPA 8021)	PVOC + NAPHTHALENE	SULFATE	TOTAL SUSPENDED SOLIDS	VOC-DW (EPA 542.2)	VOC (EPA 8260)	8-PCRA METALS	PID/ FID
A	MW-4	6/7/18	9:50			N	3	GW	#41								X							
B	MW-3		8:15														X							
C	MW-1		9:40														X							
D	MW-5		10:05														X							
E	MW-2		10:30														X							
F	MW-6		11:10														X							
G	MW-1R		11:30														X							
H	MW-3		11:55														X							
I	TR						1										X							

Comments/Special Instructions ("Specify groundwater "GW", Drinking Water "DW", Waste Water "WW", Soil "S", Air "A", Oil, Sludge etc.)

Lab to send copy of report to METCO/Jason P. (Invoice to METCO)
* Y+C Rates Apply
* Agent Status

Sample Integrity - To be completed by receiving lab.
Method of Shipment: C
Temp. of Temp. Blank: _____ °C On Ice: ✓
Cooler reinitiated upon receipt: Yes No

Relinquished By: (sign) Tyla Woodke Time: 3:00pm Date: 6/7/18
Received By: (sign) _____ Time: _____ Date: _____
Received in Laboratory By: [Signature] Time: 8:00 Date: 6/8/18