



*Excellence through experience™*

709 Gillette St., Ste #3 ♦ La Crosse, WI 54603 ♦ 1-800-552-2932 ♦ Fax (608) 781-8893 Email: rona@metcohq.com ♦ www.metcohq.com

September 20, 2019

Tom Verstegen  
Wisconsin Department of Natural Resources  
625 East County Road Y, Suite 700  
Oshkosh, WI 54901

**Subject:** Hanson Property (Former Marinan)/Dehn's Ice Cream – Bid Deferment Request for Closure Activities.  
BRRTS #: 03-59-000861, PECFA #: 54107-9999-06-A

Dear Mr. Verstegen,

A bid deferment (using Usual & Customary schedule of charges) is being submitted for completion of the site investigation and closure at the subject property located at W3306 CTH BE in Bonduel (Hartland Township), Wisconsin. The work scope will include: [1] Closure request concurrent with the Site Investigation Report. [2] GIS Packet for the source property. [3] Professional Engineer review and certification of closure request, and [4] Well abandonment (if closure is approved). The costs are as follows:

Closure Request concurrent with SIR	\$1,287.50
GIS Packet (source property)	\$ 522.58
PE Review & Certification of Closure Request	\$1,129.60
Well Abandonment	\$ 904.90
Change Order Request	<u>\$ 393.23</u>
Total	\$4,237.81

METCO is requesting a bid deferment in the amount of \$4,237.81. Once the above work scope and costs have been approved, METCO will move forward with the closure request.

Attached are an updated site layout map, soil & groundwater data tables, and draft standardized invoice form for the above work scope as required.

Should you have any questions, comments, or recommendations please contact me at our La Crosse office (608) 781-8879 or email at [jasonp@metcohq.com](mailto:jasonp@metcohq.com).

Sincerely,

A handwritten signature in black ink that reads "Jason T. Powell". The signature is fluid and cursive, with a long horizontal stroke at the beginning.

Jason T. Powell  
Staff Scientist

Attachments

c: Garrett Borowski – Client

B.I.B. DETAILED SITE MAP  
(PROPERTY BOUNDARY)

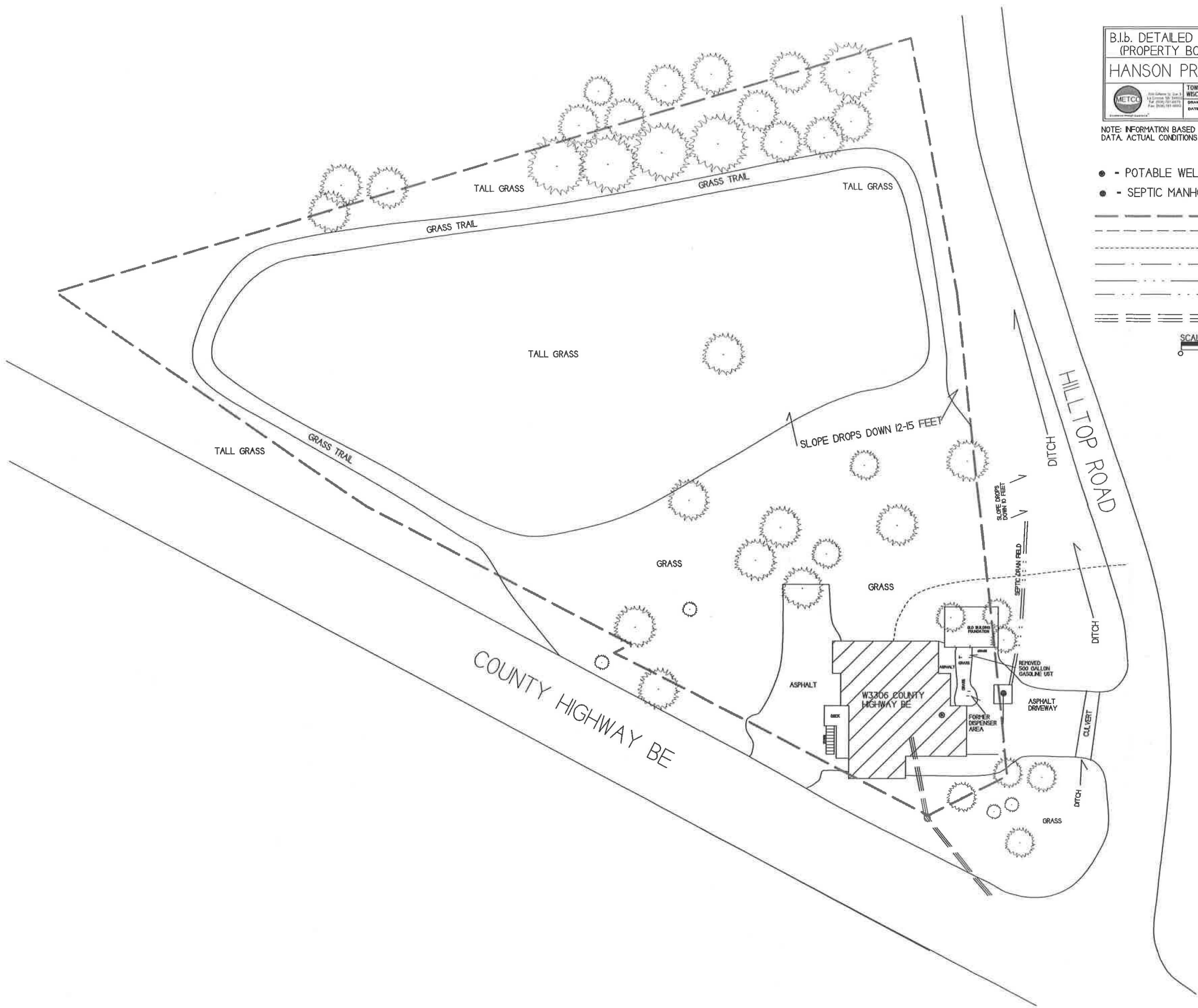
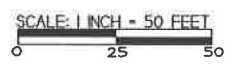
HANSON PROPERTY

TOWN OF HARTLAND,  
WISCONSIN

DATE: 02/28/2008

NOTE: INFORMATION BASED ON AVAILABLE DATA. ACTUAL CONDITIONS MAY DIFFER

- - POTABLE WELL LOCATION
- - SEPTIC MANHOLE
- — — — — - PROPERTY BOUNDARY
- - - - - - BURIED ELECTRIC LINE
- · - · - · - TELEPHONE/CABLE LINE
- - - - - - WATER LINE
- · - · - · - SANITARY SEWER LINE
- · - · - · - NATURAL GAS LINE
- ≡ ≡ ≡ ≡ - OVERHEAD ELECTRIC LINE



A.2 Soil Analytical Results Table  
Hanson Property/Dehn's Ice Cream BRRTS #03-59-000861

Sample ID	Depth (feet)	Saturation U/S	Date	PID	Lead (ppm)	DRO (ppm)	GRO (ppm)	Benzene (ppm)	Ethyl-Benzene (ppm)	MTBE (ppm)	Naphthalene (ppm)	Toluene (ppm)	1,2,4-Trime-thylbenzene (ppm)	1,3,5-Trime-thylbenzene (ppm)	Xylene (Total) (ppm)	Other VOC's (ppb)	DIRECT CONTACT			
																	Exceedance Count	Hazard Index	Cumulative Cancer Risk	
G-1-1	3.5	U	12/19/18	0.30	4.77	NS	NS	<0.025	<0.025	<0.025	<0.025	<0.025	<0.025	<0.025	<0.075	NS	0			
G-1-2	8.0	U	12/19/18	0.30	NOT SAMPLED											NS				
G-1-3	9.0	U	12/19/18	0.70	NS	NS	NS	<0.025	<0.025	<0.025	<0.025	<0.025	<0.025	<0.025	<0.075	NS				
G-2-1	3.5	U	12/19/18	1.50	<b>308</b>	NS	NS	<0.025	<0.025	<0.025	0.0291	0.068	0.05	0.043	0.153	NS	0	0.7706	5.3E-09	
G-2-2	8.0	U	12/19/18	845	9.68	NS	NS	<0.3	<b>19.9</b>	<0.5	<b>32</b>	0.36	<b>207</b>	<b>69</b>	<b>227</b>	SEE VOC SHEET				
G-2-3	12.0	U	12/19/18	183	NS	NS	NS	<0.025	<0.025	<0.025	0.167	<0.025	<0.025	0.0308	<0.075	NS				
G-2-4	16.0	S	12/19/18	0.90	NOT SAMPLED											NS				
G-2-5	20.0	S	12/19/18	NM	NS	NS	NS	<0.025	<0.025	<0.025	<0.025	<0.025	<0.025	<0.025	<0.075	NS				
G-3-1	3.5	U	12/19/18	0.40	6.41	NS	NS	<0.025	<0.025	<0.025	<0.025	<0.025	<0.025	<0.025	<0.075	NS	0			
G-3-2	8.0	U	12/19/18	0.80	NS	NS	NS	<0.025	<0.025	<0.025	<0.025	<0.025	<0.025	<0.025	<0.075	NS				
G-3-3	12.0	U	12/19/18	0.60	NOT SAMPLED											NS				
G-3-4	16.0	S	12/19/18	0.80	NS	NS	NS	<0.025	<0.025	<0.025	<0.025	<0.025	<0.025	<0.025	<0.075	NS				
G-3-5	18.0	S	12/19/18	0.50	NOT SAMPLED											NS				
G-4-1	3.5	U	12/19/18	0.30	2.08	NS	NS	<0.025	<0.025	<0.025	<0.025	<0.025	<0.025	<0.025	<0.075	NS	0			
G-4-2	8.0	U	12/19/18	0.30	NS	NS	NS	<0.025	<0.025	<0.025	<0.025	<0.025	<0.025	<0.025	<0.075	NS				
G-4-3	12.0	U	12/19/18	0.50	NOT SAMPLED											NS				
G-4-4	14.0	S	12/19/18	0.30	NS	NS	NS	<0.025	<0.025	<0.025	<0.025	<0.025	<0.025	<0.025	<0.075	NS				
G-4-5	18.0	S	12/19/18	0.20	NOT SAMPLED											NS				
G-5-1	3.5	U	12/19/18	0.30	3.97	NS	NS	<0.025	<0.025	<0.025	<0.025	<0.025	<0.025	<0.025	<0.075	NS	0			
G-5-2	8.0	U	12/19/18	0.30	NS	NS	NS	<0.025	<0.025	<0.025	<0.025	<0.025	<0.025	<0.025	<0.075	NS				
G-5-3	12.0	U	12/19/18	0.30	NOT SAMPLED											NS				
G-5-4	16.0	S	12/19/18	0.40	NS	NS	NS	<0.025	<0.025	<0.025	<0.025	<0.025	<0.025	<0.025	<0.075	NS				
G-5-5	18.0	S	12/19/18	0.60	NOT SAMPLED											NS				
G-6-1	3.5	U	12/19/18	0.30	3.80	NS	NS	<0.025	<0.025	<0.025	<0.025	<0.025	<0.025	<0.025	<0.075	NS	0			
G-6-2	8.0	U	12/19/18	0.30	NS	NS	NS	<0.025	<0.025	<0.025	<0.025	<0.025	<0.025	<0.025	<0.075	NS				
G-6-3	12.0	U	12/19/18	0.40	NOT SAMPLED											NS				
G-6-4	16.0	S	12/19/18	0.40	NS	NS	NS	<0.025	<0.025	<0.025	<0.025	<0.025	<0.025	<0.025	<0.075	NS				
G-6-5	18.0	S	12/19/18	0.40	NOT SAMPLED											NS				
G-7-1	3.5	U	12/19/18	0.30	NOT SAMPLED											NS	0			
G-7-2	8.0	U	12/19/18	0.40	NOT SAMPLED											NS				
G-7-3	10.0	U	12/19/18	0.40	NOT SAMPLED											NS				
G-8-1	3.5	U	12/19/18	0.20	NOT SAMPLED											NS	0			
G-8-2	8.0	U	12/19/18	0.30	NOT SAMPLED											NS				
G-8-3	12.0	U	12/19/18	0.30	NOT SAMPLED											NS				
G-8-4	16.0	S	12/19/18	0.30	NOT SAMPLED											NS				
G-8-5	17.0	S	12/19/18	0.30	NOT SAMPLED											NS				
G-9-1	3.5	U	12/19/18	0.30	NOT SAMPLED											NS	0			
G-9-2	8.0	U	12/19/18	0.20	NOT SAMPLED											NS				
G-9-3	12.0	U	12/19/18	0.20	NOT SAMPLED											NS				
G-9-4	16.0	S	12/19/18	0.10	NOT SAMPLED											NS				
G-9-5	18.0	S	12/19/18	0.30	NOT SAMPLED											NS				
<b>Groundwater RCL</b>					<b>27</b>	-	-	<b>0.0051</b>	<b>1.57</b>	<b>0.027</b>	<b>0.6582</b>	<b>1.1072</b>	<b>1.3787</b>		<b>3.96</b>	-				
<b>Non-Industrial Direct Contact RCL</b>					<b>400</b>	-	-	<b>1.6</b>	<b>8.02</b>	<b>63.8</b>	<b>5.52</b>	<b>818</b>	<b>219</b>	<b>182</b>	<b>260</b>	-		1.00E+00	1.00E-05	
<b>Industrial Direct Contact RCL</b>					<b>(800)</b>	-	-	<b>(7.07)</b>	<b>(35.4)</b>	<b>(282)</b>	<b>(24.1)</b>	<b>(818)</b>	<b>(219)</b>	<b>(182)</b>	<b>(260)</b>	-		1.00E+00	1.00E-05	
<b>Soil Saturation Concentration (C-sat)*</b>					-	-	-	<b>1820*</b>	<b>480*</b>	<b>8870*</b>	-	<b>818*</b>	<b>219*</b>	<b>182*</b>	<b>260*</b>	-				

**Bold = Groundwater RCL Exceedance**  
**Bold & Underline = Non Industrial Direct Contact RCL Exceedance**  
**(Bold & Parentheses) = Industrial Direct Contact RCL Exceedance**  
**Bold & Asteric \* = C-sat Exceedance**  
NS = Not Sampled  
(ppm) = parts per million  
DRO = Diesel Range Organics  
GRO = Gasoline Range Organics  
PID = Photoionization Detector  
PVOC's = Petroleum Volatile Organic Compounds  
VOC's = Volatile Organic Compounds  
**Note: Non-Industrial RCLs apply to this site.**

U=UNSATURATED (BASED ON ALL TIME LOW WATER TABLE PER WDNR)  
S=SATURATED (BASED ON ALL TIME LOW WATER TABLE PER WDNR)  
NM = Not Measured  
ND = No Detects

A.2 Soil Analytical Results Table

Hanson Property/Dehn's Ice Cream BRRTS #03-59-000861

Sample ID	Depth (feet)	Saturation U/S	Date	PID	Lead (ppm)	DRO (ppm)	GRO (ppm)	Benzene (ppm)	Ethyl-Benzene (ppm)	MTBE (ppm)	Naphthalene (ppm)	Toluene (ppm)	1,2,4-Trime-thylbenzene (ppm)	1,3,5-Trime-thylbenzene (ppm)	Xylene (Total) (ppm)	Other VOC's (ppb)	DIRECT CONTACT		
																	Exceedance Count	Hazard Index	Cumulative Cancer Risk
MW-1-1	3.5	U	03/11/19	0.00	NOT SAMPLED											NS	0		
MW-1-2	8.0	U	03/11/19	1653.0	NS	NS	2870	<2.5	31.4	<2.5	54	3.8	284*	100	262*	TCLP Lead <0.1 TCLP Benzene <0.05			
MW-1-3	12.0	S	03/11/19	13.90	NOT SAMPLED											NS			
MW-1-4	16.0	S	03/11/19	0.50	NOT SAMPLED											NS			
MW-1-5	20.0	S	03/11/19	0.50	NOT SAMPLED											NS			
MW-1-6	22.0	S	03/11/19	0.10	NS	NS	NS	<0.025	<0.025	<0.025	<0.025	<0.025	0.216	0.083	0.223	NS			
MW-2-1	3.5	U	03/11/19	0.20	NOT SAMPLED											NS	0		
MW-2-2	8.0	U	03/11/19	0.30	NOT SAMPLED											NS			
MW-2-3	12.0	S	03/11/19	0.10	NS	NS	NS	<0.025	<0.025	<0.025	<0.025	<0.025	0.0285	<0.025	0.034-0.084	NS			
MW-2-4	16.0	S	03/11/19	0.30	NOT SAMPLED											NS			
MW-3-1	3.5	U	03/11/19	0.60	NOT SAMPLED											NS	0		
MW-3-2	8.0	U	03/11/19	1.00	NS	NS	NS	<0.025	<0.025	<0.025	0.039	<0.025	0.078	0.032	0.0841	NS			
MW-3-3	12.0	S	03/11/19	0.60	NOT SAMPLED											NS			
MW-3-4	14.0	S	03/11/19	0.30	NOT SAMPLED											NS			
MW-3-5	16.0	S	03/11/19	0.30	NOT SAMPLED											NS			
MW-3-6	18.0	S	03/11/19	0.60	NOT SAMPLED											NS			
MW-4-1	3.5	U	03/12/19	0.10	NOT SAMPLED											NS	0		
MW-4-2	8.0	U	03/12/19	0.20	NOT SAMPLED											NS			
MW-4-3	12.0	S	03/12/19	0.20	NS	NS	NS	<0.025	<0.025	<0.025	<0.025	<0.025	<0.025	<0.025	0.0975	NS			
MW-4-4	16.0	S	03/12/19	0.70	NOT SAMPLED											NS			
MW-4A-1	3.5	U	05/20/19	0.50	NOT SAMPLED											NS	0		
MW-4A-2	8.0	U	05/20/19	0.60	NOT SAMPLED											NS			
MW-4A-3	12.0	S	05/20/19	0.80	NOT SAMPLED											NS			
MW-4A-4	16.0	S	05/20/19	0.50	NOT SAMPLED											NS			
MW-4A-5	20.0	S	05/20/19	0.50	NOT SAMPLED											NS			
MW-5-1	3.5	U	05/20/19	0.70	NOT SAMPLED											NS	0		
MW-5-2	8.0	U	05/20/19	8.90	NS	NS	NS	<0.025	<0.025	<0.025	<0.025	<0.025	<0.025	<0.025	<0.075	NS			
MW-5-3	12.0	S	05/20/19	9.20	NOT SAMPLED											NS			
MW-5-4	16.0	S	05/20/19	6.80	NOT SAMPLED											NS			
MW-5-5	20.0	S	05/20/19	9.60	NOT SAMPLED											NS			
MW-6-1	3.5	U	05/20/19	13.40	NOT SAMPLED											NS	0		
MW-6-2	8.0	U	05/20/19	15.00	NS	NS	NS	<0.025	<0.025	<0.025	<0.025	<0.025	<0.025	<0.025	<0.075	NS			
MW-6-3	12.0	S	05/20/19	7.80	NOT SAMPLED											NS			
MW-6-4	16.0	S	05/20/19	5.50	NOT SAMPLED											NS			
MW-6-5	20.0	S	05/20/19	10.30	NOT SAMPLED											NS			
<b>Groundwater RCL</b>					<b>27</b>	<b>-</b>	<b>-</b>	<b>0.0051</b>	<b>1.57</b>	<b>0.027</b>	<b>0.6582</b>	<b>1.1072</b>	<b>1.3787</b>		<b>3.96</b>	<b>-</b>			
<b>Non-Industrial Direct Contact RCL</b>					<b>400</b>	<b>-</b>	<b>-</b>	<b>1.6</b>	<b>8.02</b>	<b>63.8</b>	<b>5.52</b>	<b>818</b>	<b>219</b>	<b>182</b>	<b>260</b>	<b>-</b>		<b>1.00E+00</b>	<b>1.00E-05</b>
<b>Industrial Direct Contact RCL</b>					<b>(800)</b>	<b>-</b>	<b>-</b>	<b>(7.07)</b>	<b>(35.4)</b>	<b>(282)</b>	<b>(24.1)</b>	<b>(818)</b>	<b>(219)</b>	<b>(182)</b>	<b>(260)</b>	<b>-</b>		<b>1.00E+00</b>	<b>1.00E-05</b>
<b>Soil Saturation Concentration (C-sat)*</b>					<b>-</b>	<b>-</b>	<b>-</b>	<b>1820*</b>	<b>480*</b>	<b>8870*</b>	<b>-</b>	<b>818*</b>	<b>219*</b>	<b>182*</b>	<b>260*</b>	<b>-</b>			

Bold = Groundwater RCL Exceedance

Bold & Underline = Non Industrial Direct Contact RCL Exceedance

(Bold & Parentheses) = Industrial Direct Contact RCL Exceedance

Bold & Asteric \* = C-sat Exceedance

NS = Not Sampled

NM = Not Measured

(ppm) = parts per million

ND = No Detects

DRO = Diesel Range Organics

GRO = Gasoline Range Organics

PID = Photoionization Detector

PVOC's = Petroleum Volatile Organic Compounds

VOC's = Volatile Organic Compounds

Note: Non-Industrial RCLs apply to this site.

U=UNSATURATED (BASED ON ALL TIME LOW WATER TABLE PER WDNR)

S=SATURATED (BASED ON ALL TIME LOW WATER TABLE PER WDNR)

**A.1 Groundwater Analytical Table**

Hanson Property/Dehn's Ice Cream BRRS #03-59-000861

**Well MW-1**

PVC Elevation = 958.30 (feet) (MSL)

Date	Water Elevation (in feet msl)	Depth to water from top of PVC (in feet)	Lead (ppb)	Benzene (ppb)	Ethyl Benzene (ppb)	MTBE (ppb)	Naphthalene (ppb)	Toluene (ppb)	Trimethyl-benzenes (ppb)	Xylene (Total) (ppb)
06/19/19	948.61	9.69	3.6	<11	64	<14	<105	<9.5	268	976
09/09/19	944.73	13.57	<1.1	<0.32	<0.29	<0.24	<1.3	0.304	0.55-1.22	<1.22
<b>ENFORCEMENT STANDARD ES = Bold</b>			<b>15</b>	<b>5</b>	<b>700</b>	<b>60</b>	<b>100</b>	<b>800</b>	<b>480</b>	<b>2000</b>
<b>PREVENTIVE ACTION LIMIT PAL = Italics</b>			<i>1.5</i>	<i>0.5</i>	<i>140</i>	<i>12</i>	<i>10</i>	<i>160</i>	<i>96</i>	<i>400</i>

(ppb) = parts per billion (ppm) = parts per million

NS = not sampled NM = not measured

Note: Elevations are presented in feet mean sea level (msl).

**Well MW-2**

PVC Elevation = 957.79 (feet) (MSL)

Date	Water Elevation (in feet msl)	Depth to water from top of PVC (in feet)	Lead (ppb)	Benzene (ppb)	Ethyl Benzene (ppb)	MTBE (ppb)	Naphthalene (ppb)	Toluene (ppb)	Trimethyl-benzenes (ppb)	Xylene (Total) (ppb)
06/19/19	950.04	7.75	<1.1	<0.22	<0.26	<0.28	<2.1	<0.19	<1.43	<0.72
09/09/19	945.73	12.06	<1.1	<0.32	<0.29	<0.24	<1.3	<0.29	<1.13	<1.22
<b>ENFORCEMENT STANDARD ES = Bold</b>			<b>15</b>	<b>5</b>	<b>700</b>	<b>60</b>	<b>100</b>	<b>800</b>	<b>480</b>	<b>2000</b>
<b>PREVENTIVE ACTION LIMIT PAL = Italics</b>			<i>1.5</i>	<i>0.5</i>	<i>140</i>	<i>12</i>	<i>10</i>	<i>160</i>	<i>96</i>	<i>400</i>

(ppb) = parts per billion (ppm) = parts per million

NS = not sampled NM = not measured

Note: Elevations are presented in feet mean sea level (msl).

**Well MW-3**

PVC Elevation = 949.53 (feet) (MSL)

Date	Water Elevation (in feet msl)	Depth to water from top of PVC (in feet)	Lead (ppb)	Benzene (ppb)	Ethyl Benzene (ppb)	MTBE (ppb)	Naphthalene (ppb)	Toluene (ppb)	Trimethyl-benzenes (ppb)	Xylene (Total) (ppb)
06/19/19	941.79	7.74	<1.1	<0.22	<0.26	<0.28	<2.1	<0.19	<1.43	<0.72
09/09/19	938.92	10.61	<1.1	<0.32	<0.29	<0.24	<1.3	<0.29	<1.13	<1.22
<b>ENFORCEMENT STANDARD ES = Bold</b>			<b>15</b>	<b>5</b>	<b>700</b>	<b>60</b>	<b>100</b>	<b>800</b>	<b>480</b>	<b>2000</b>
<b>PREVENTIVE ACTION LIMIT PAL = Italics</b>			<i>1.5</i>	<i>0.5</i>	<i>140</i>	<i>12</i>	<i>10</i>	<i>160</i>	<i>96</i>	<i>400</i>

(ppb) = parts per billion (ppm) = parts per million

NS = not sampled NM = not measured

Note: Elevations are presented in feet mean sea level (msl).

**A.1 Groundwater Analytical Table**  
**Hanson Property/Dehn's Ice Cream BRRS #03-59-000861**

**Well MW-4A**

**PVC Elevation =** 954.91 (feet) (MSL)

Date	Water Elevation (in feet msl)	Depth to water from top of PVC (in feet)	Lead (ppb)	Benzene (ppb)	Ethyl Benzene (ppb)	MTBE (ppb)	Naphthalene (ppb)	Toluene (ppb)	Trimethyl-benzenes (ppb)	Xylene (Total) (ppb)
06/19/19	946.04	8.87	<1.1	<0.22	<0.26	<0.28	<2.1	<0.19	<1.43	<0.72
09/09/19	942.61	12.30	<1.1	<0.32	<0.29	<0.24	<1.3	<0.29	<1.13	<1.22
<b>ENFORCEMENT STANDARD ES = Bold</b>			<b>15</b>	<b>5</b>	<b>700</b>	<b>60</b>	<b>100</b>	<b>800</b>	<b>480</b>	<b>2000</b>
<b>PREVENTIVE ACTION LIMIT PAL = Italics</b>			<i>1.5</i>	<i>0.5</i>	<i>140</i>	<i>12</i>	<i>10</i>	<i>160</i>	<i>96</i>	<i>400</i>

(ppb) = parts per billion (ppm) = parts per million

NS = not sampled NM = not measured

Note: Elevations are presented in feet mean sea level (msl).

**Well MW-5**

**PVC Elevation =** 956.60 (feet) (MSL)

Date	Water Elevation (in feet msl)	Depth to water from top of PVC (in feet)	Lead (ppb)	Benzene (ppb)	Ethyl Benzene (ppb)	MTBE (ppb)	Naphthalene (ppb)	Toluene (ppb)	Trimethyl-benzenes (ppb)	Xylene (Total) (ppb)
06/19/19	948.32	8.28	<1.1	<0.22	<0.26	<0.28	<2.1	<0.19	<1.43	<0.72
09/09/19	944.52	12.08	<1.1	<0.32	<0.29	<0.24	<1.3	<0.29	<1.13	<1.22
<b>ENFORCEMENT STANDARD ES = Bold</b>			<b>15</b>	<b>5</b>	<b>700</b>	<b>60</b>	<b>100</b>	<b>800</b>	<b>480</b>	<b>2000</b>
<b>PREVENTIVE ACTION LIMIT PAL = Italics</b>			<i>1.5</i>	<i>0.5</i>	<i>140</i>	<i>12</i>	<i>10</i>	<i>160</i>	<i>96</i>	<i>400</i>

(ppb) = parts per billion (ppm) = parts per million

NS = not sampled NM = not measured

Note: Elevations are presented in feet mean sea level (msl).

**Well MW-6**

**PVC Elevation =** 959.16 (feet) (MSL)

Date	Water Elevation (in feet msl)	Depth to water from top of PVC (in feet)	Lead (ppb)	Benzene (ppb)	Ethyl Benzene (ppb)	MTBE (ppb)	Naphthalene (ppb)	Toluene (ppb)	Trimethyl-benzenes (ppb)	Xylene (Total) (ppb)
06/19/19	950.80	8.36	<1.1	<0.22	<0.26	<0.28	<2.1	<0.19	<1.43	<0.72
09/09/19	947.14	12.02	<1.1	<0.32	<0.29	<0.24	<1.3	<0.29	<1.13	<1.22
<b>ENFORCEMENT STANDARD ES = Bold</b>			<b>15</b>	<b>5</b>	<b>700</b>	<b>60</b>	<b>100</b>	<b>800</b>	<b>480</b>	<b>2000</b>
<b>PREVENTIVE ACTION LIMIT PAL = Italics</b>			<i>1.5</i>	<i>0.5</i>	<i>140</i>	<i>12</i>	<i>10</i>	<i>160</i>	<i>96</i>	<i>400</i>

(ppb) = parts per billion (ppm) = parts per million

NS = not sampled NM = not measured

Note: Elevations are presented in feet mean sea level (msl).

**Well PW - W3306**

**PVC Elevation =** 959.16 (feet) (MSL)

Date	Water Elevation (in feet msl)	Depth to water from top of PVC (in feet)	Lead (ppb)	Benzene (ppb)	Ethyl Benzene (ppb)	MTBE (ppb)	Naphthalene (ppb)	Toluene (ppb)	Trimethyl-benzenes (ppb)	Xylene (Total) (ppb)
06/19/19	NM	NM	NS	<0.22	<0.26	<0.28	<2.1	<0.19	<1.43	<0.72
09/09/19	NM	NM	NS	<0.32	<0.29	<0.24	<1.3	<0.29	<1.13	<1.22
<b>ENFORCEMENT STANDARD ES = Bold</b>			<b>15</b>	<b>5</b>	<b>700</b>	<b>60</b>	<b>100</b>	<b>800</b>	<b>480</b>	<b>2000</b>
<b>PREVENTIVE ACTION LIMIT PAL = Italics</b>			<i>1.5</i>	<i>0.5</i>	<i>140</i>	<i>12</i>	<i>10</i>	<i>160</i>	<i>96</i>	<i>400</i>

(ppb) = parts per billion (ppm) = parts per million

NS = not sampled NM = not measured

Note: Elevations are presented in feet mean sea level (msl).

**A.6 Water Level Elevations**  
**Hanson Property/Dehn's Ice Cream BRRS #03-59-000861**  
**Hartland, Wisconsin**

	<b>MW-1</b>	<b>MW-2</b>	<b>MW-3</b>	<b>MW-4A</b>	<b>MW-5</b>	<b>MW-6</b>
<b>Ground Surface (feet msl)</b>	958.64	958.03	950.09	955.47	957.15	959.78
<b>PVC top (feet msl)</b>	958.30	957.79	949.53	954.91	956.60	959.16
<b>Well Depth (feet)</b>	22.00	18.00	18.00	19.00	19.00	19.00
<b>Top of screen (feet msl)</b>	951.64	950.03	947.09	951.47	953.15	955.78
<b>Bottom of screen (feet msl)</b>	936.64	940.03	932.09	936.47	938.15	940.78
<b>Depth to Water From Top of PVC (feet)</b>						
<b>06/19/19</b>	9.69	7.75	7.74	8.87	8.28	8.36
<b>09/09/19</b>	13.57	12.06	10.61	12.30	12.08	12.02
<b>Depth to Water From Ground Surface (feet)</b>						
<b>06/19/19</b>	10.03	7.99	8.30	9.43	8.83	8.98
<b>09/09/19</b>	13.91	12.30	11.17	12.86	12.63	12.64
<b>Groundwater Elevation (feet msl)</b>						
<b>06/19/19</b>	948.61	950.04	941.79	946.04	948.32	950.80
<b>09/09/19</b>	944.73	945.73	938.92	942.61	944.52	947.14

Note: Elevations are presented in feet mean sea level (msl).



A.7 Other  
 Groundwater NA Indicator Results  
 Hanson Property/Dehn's Ice Cream BRRTS #03-59-000861

Well MW-1

Date	Dissolved Oxygen (ppm)	pH	ORP	Temp ( C)	Specific Conductance	Nitrate + Nitrite (ppm)	Total Sulfate (ppm)	Dissolved Iron (ppm)	Man-ganese (ppb)
06/19/19	3.24	5.83	-62.4	7.97	871	<0.47	50.3	0.1	253
09/09/19	1.55	7.15	283.60	12.21	1183	NS	NS	NS	NS
ENFORCEMENT STANDARD = <b>ES – Bold</b>						10	-	-	300
PREVENTIVE ACTION LIMIT = <i>PAL - Italics</i>						2	-	-	60

(ppb) = parts per billion (ppm) = parts per million

NS = not sampled NM = not measured ORP = Oxidation Reduction Potential

Note: Elevations are presented in feet mean sea level (msl).

Well MW-2

Date	Dissolved Oxygen (ppm)	pH	ORP	Temp ( C)	Specific Conductance	Nitrate + Nitrite (ppm)	Total Sulfate (ppm)	Dissolved Iron (ppm)	Man-ganese (ppb)
06/19/19	3.20	6.28	-42.6	10.84	433	<0.47	10.6	0.05	63.0
09/09/19	4.70	7.66	280.10	14.65	515	NS	NS	NS	NS
ENFORCEMENT STANDARD = <b>ES – Bold</b>						10	-	-	300
PREVENTIVE ACTION LIMIT = <i>PAL - Italics</i>						2	-	-	60

(ppb) = parts per billion (ppm) = parts per million

NS = not sampled NM = not measured ORP = Oxidation Reduction Potential

Note: Elevations are presented in feet mean sea level (msl).

Well MW-3

Date	Dissolved Oxygen (ppm)	pH	ORP	Temp ( C)	Specific Conductance	Nitrate + Nitrite (ppm)	Total Sulfate (ppm)	Dissolved Iron (ppm)	Man-ganese (ppb)
06/19/19	3.09	6.83	-47.7	11.46	852	<0.47	15.8	0.03	80.9
09/09/19	5.47	8.12	283.50	15.26	699	NS	NS	NS	NS
ENFORCEMENT STANDARD = <b>ES – Bold</b>						10	-	-	300
PREVENTIVE ACTION LIMIT = <i>PAL - Italics</i>						2	-	-	60

(ppb) = parts per billion (ppm) = parts per million

NS = not sampled NM = not measured ORP = Oxidation Reduction Potential

Note: Elevations are presented in feet mean sea level (msl).

Well MW-4A

Date	Dissolved Oxygen (ppm)	pH	ORP	Temp ( C)	Specific Conductance	Nitrate + Nitrite (ppm)	Total Sulfate (ppm)	Dissolved Iron (ppm)	Man-ganese (ppb)
06/19/19	3.34	6.20	-43.6	8.30	420	<0.47	4.60	0.03	118
09/09/19	4.18	7.74	299.30	11.08	699	NS	NS	NS	NS
ENFORCEMENT STANDARD = <b>ES – Bold</b>						10	-	-	300
PREVENTIVE ACTION LIMIT = <i>PAL - Italics</i>						2	-	-	60

(ppb) = parts per billion (ppm) = parts per million

NS = not sampled NM = not measured ORP = Oxidation Reduction Potential

Note: Elevations are presented in feet mean sea level (msl).

**A.7 Other**  
**Groundwater NA Indicator Results**  
**Hanson Property/Dehn's Ice Cream BRRTS #03-59-000861**

**Well MW-5**

Date	Dissolved Oxygen (ppm)	pH	ORP	Temp ( C)	Specific Conductance	Nitrate + Nitrite (ppm)	Total Sulfate (ppm)	Dissolved Iron (ppm)	Man-ganese (ppb)
06/19/19	3.36	6.25	-49.5	8.29	719	<0.47	26.1	0.03	75.4
09/09/19	5.75	7.70	309.40	11.08	965	NS	NS	NS	NS
ENFORCEMENT STANDARD = <b>ES – Bold</b>						<b>10</b>	-	-	<b>300</b>
PREVENTIVE ACTION LIMIT = <i>PAL - Italics</i>						<i>2</i>	-	-	<i>60</i>

(ppb) = parts per billion (ppm) = parts per million

NS = not sampled NM = not measured ORP = Oxidation Reduction Potential

Note: Elevations are presented in feet mean sea level (msl).

**Well MW-6**

Date	Dissolved Oxygen (ppm)	pH	ORP	Temp ( C)	Specific Conductance	Nitrate + Nitrite (ppm)	Total Sulfate (ppm)	Dissolved Iron (ppm)	Man-ganese (ppb)
06/19/19	3.22	6.11	-54	9.19	780	<0.47	18.6	<0.03	107
09/09/19	4.98	7.59	309.80	12.33	994	NS	NS	NS	NS
ENFORCEMENT STANDARD = <b>ES – Bold</b>						<b>10</b>	-	-	<b>300</b>
PREVENTIVE ACTION LIMIT = <i>PAL - Italics</i>						<i>2</i>	-	-	<i>60</i>

(ppb) = parts per billion (ppm) = parts per million

NS = not sampled NM = not measured ORP = Oxidation Reduction Potential

Note: Elevations are presented in feet mean sea level (msl).

# Usual and Customary Standardized Invoice #26

## July 2019 - December 2019



RR-111a

PECFA #: 54107-9999-06-A Vendor Name: \_\_\_\_\_  
 BRRTS #: 03-59-000861 Invoice #: \_\_\_\_\_  
 Site Name: Hanson Property/Dehn's Ice Cream Invoice Date: \_\_\_\_\_  
 Site Address: W3306 County Highway BE Check #: \_\_\_\_\_  
Bonduel, WI 54107

U&C Total \$ 4,237.81  
 Variance to U&C Total \$ -  
 Grand Total \$ 4,237.81

TASK	TASK DESCRIPTION	SERVICES	ACTIVITY CODE	ACTIVITY REFERENCE CODE DESCRIPTION	UNIT	MAX UNIT COST	UNITS	TOTAL MAX
5	Closure Request		CR15	Continuing Obligation Packet Submittal (For Source Property	Packet	\$ 522.58	1	\$ 522.58
5	Closure Request		CR25	Closure Request Following SIR	Submittal	\$ 1,287.50	1	\$ 1,287.50
5	Closure Request		CR30	PE review and certification of closure packet	Site	\$ 1,129.60	1	\$ 1,129.60
8	Well Abandonment	Consultant	WAB05	Coordination	Site	\$ 162.86	1	\$ 162.86
8	Well Abandonment	Consultant	WAB10	Water column < 30 ft	Ft	\$ 2.60	115	\$ 299.00
8	Well Abandonment	Consultant	WAB20	Bentonite Pellets (50lb bag - 1/4" pellet)	Bag	\$ 11.14	4	\$ 44.56
8	Well Abandonment	Consultant	WAB30	Primary Mob/Demob	Site	\$ 398.48	1	\$ 398.48
36	Change Order Request		COR05	Change Order Request (cost cap exceedance requests)	Change Order	\$ 393.23	1	\$ 393.23