



①

water
from
tank
pulled
when
Stoltz
arrived @
site
approx
2:31 pm

5/7/19

C. Stoltz



2

Water
from tank
pull
when Stoltz
arrive @
site

5/7/19

C. Stoltz



3

Water from
tank
pulled
when
Stoltz
arrived @
site

5/7/19

C. STOLTZ



4

Former
dispenser
island
area.
canopy
intact

5/7/19

C. STOLTZ



5

5/7/19

C. Stoltz

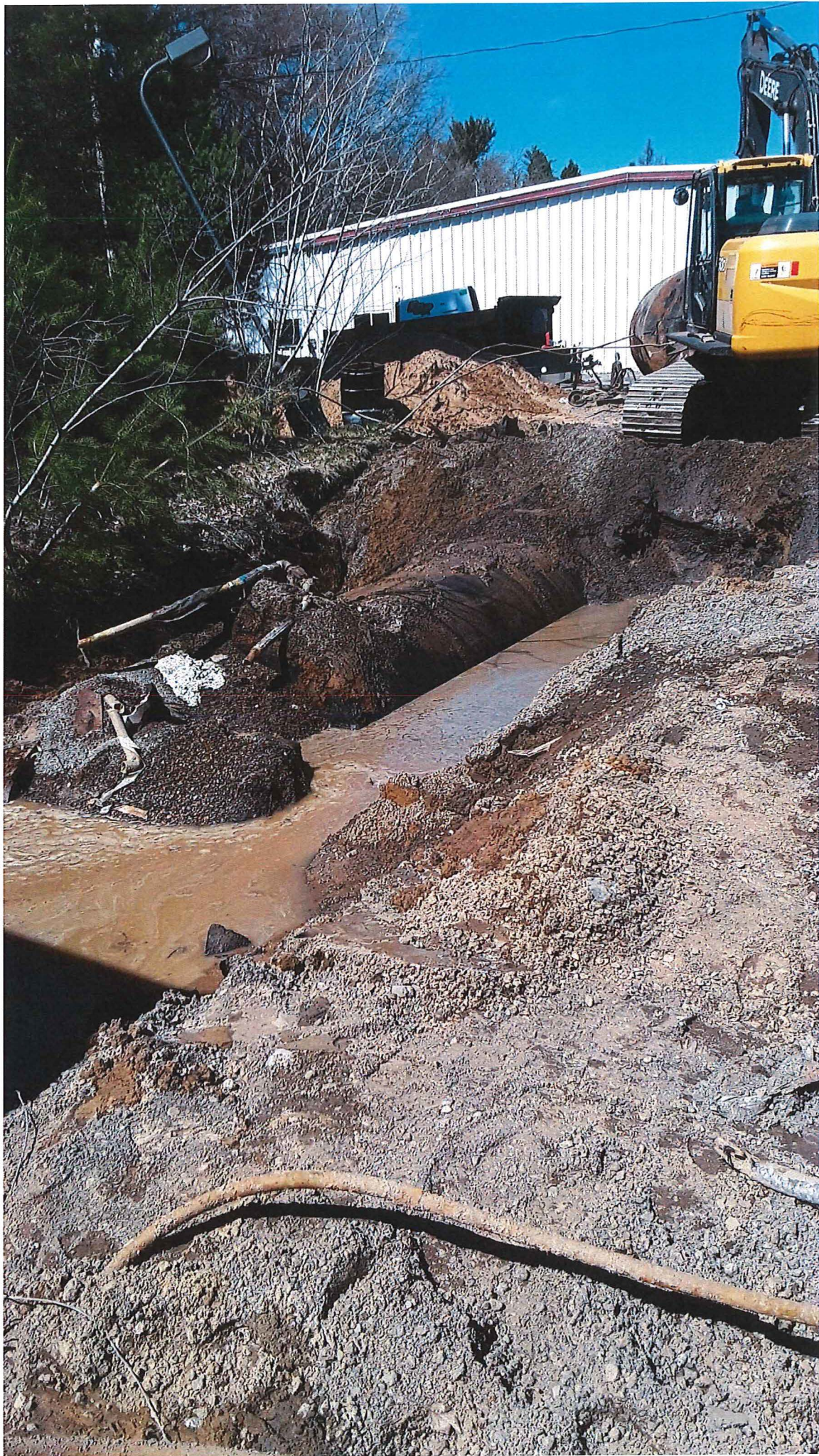


6

tank bed
next to
Bldg

5/7/19

C. Stoltz

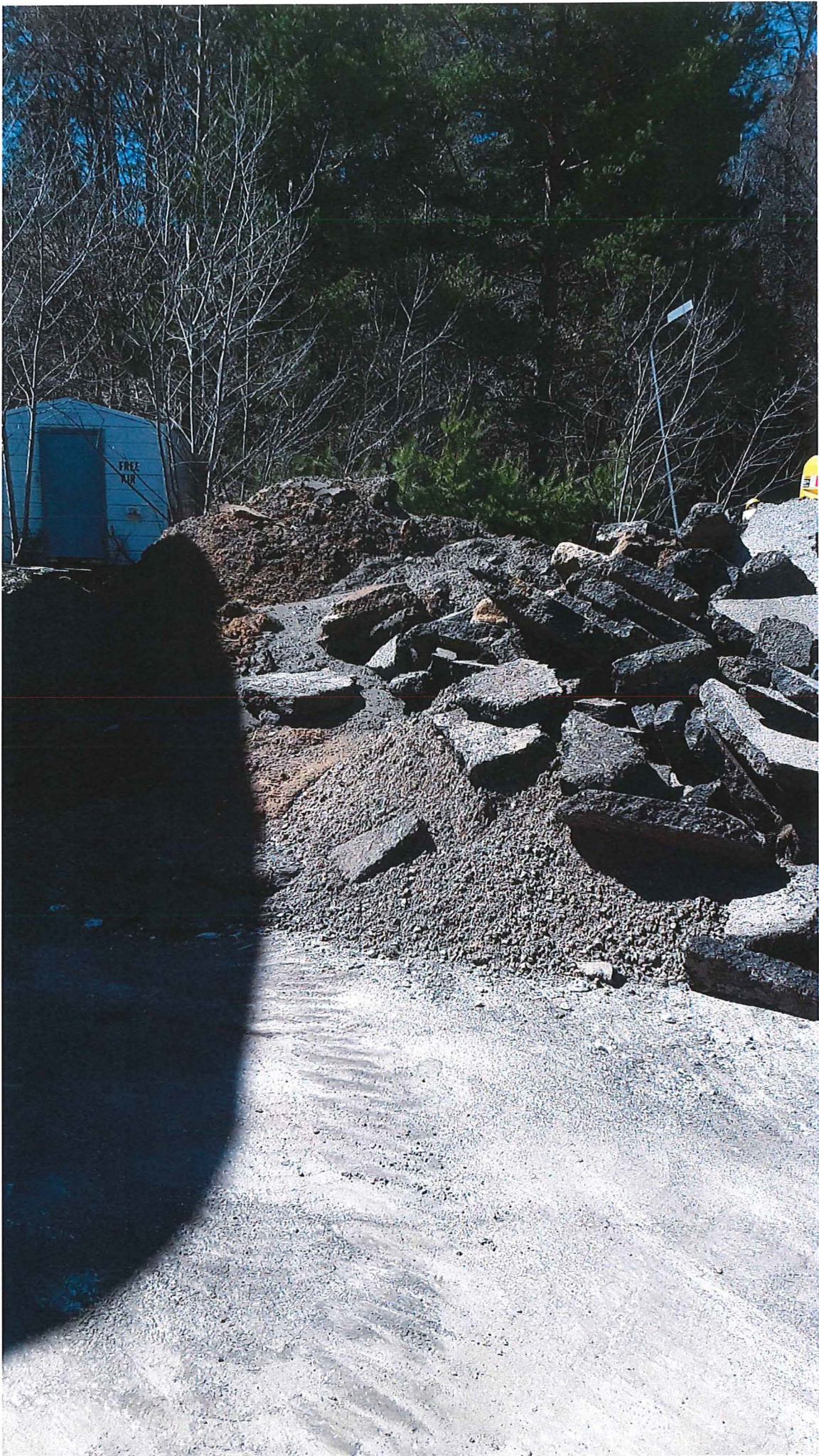


7

tank
used

5/7/19

C-Statz



3

5/7/19

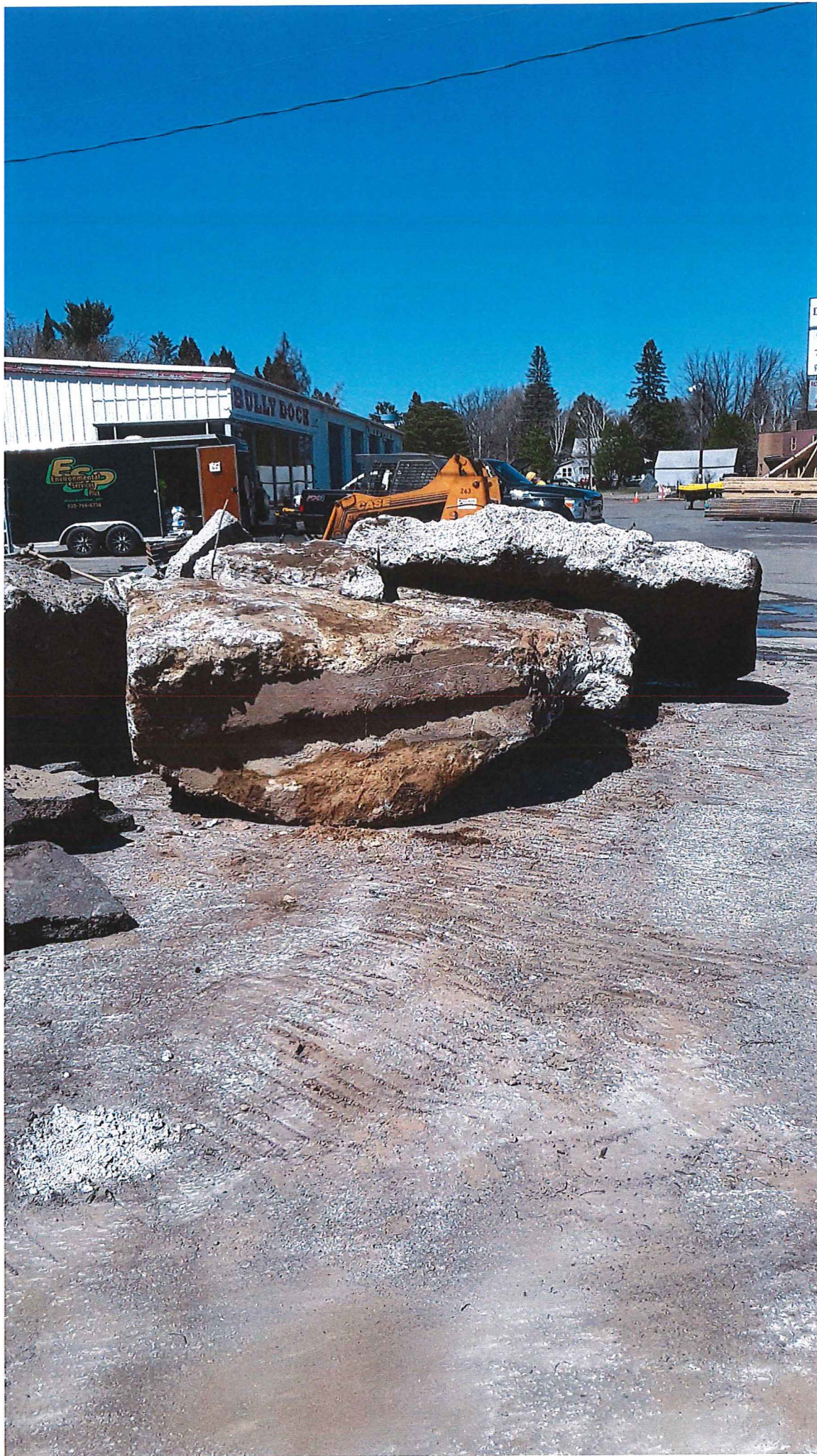
C. Stoltz



9

5/7/19

C. Stutz

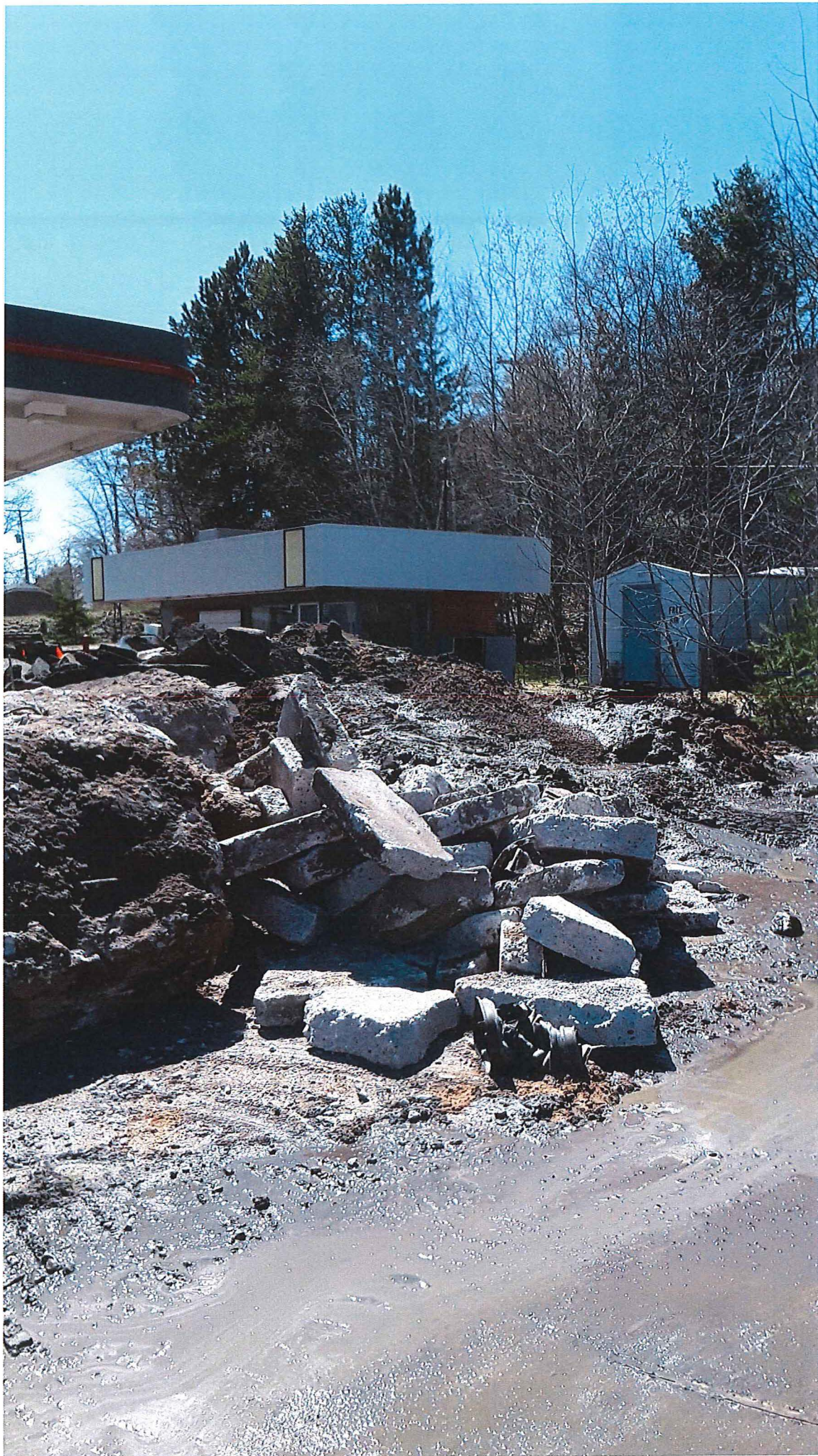


10

Concrete
that was
on top of
tanks for
ballast!

5/7/19

C. Stoltz



11

Concrete
on top of
tanks -
ballast

5/7/19

C. Stoltz



12

Eastern
Beam by
Contractor to
prevent
water run-off

5/7/19

C. STOLTZ



13

Pads
placed in
street to
absorb
run-off
water

5/7/19

C. Stoltz



14

Remaining
run-off
water

5/7/19

C. STOLTZ



15

remaining
run off
water

5/7/19

C. STOLTZ



16

Site
after
beam in
place -
driveway!
pulling
dry

5/7/19

C. Stoltz



17

Cap
mant
area
looking
west

5/7/19
C. Stoltz



18

Cap
Maint
area
West

SP119

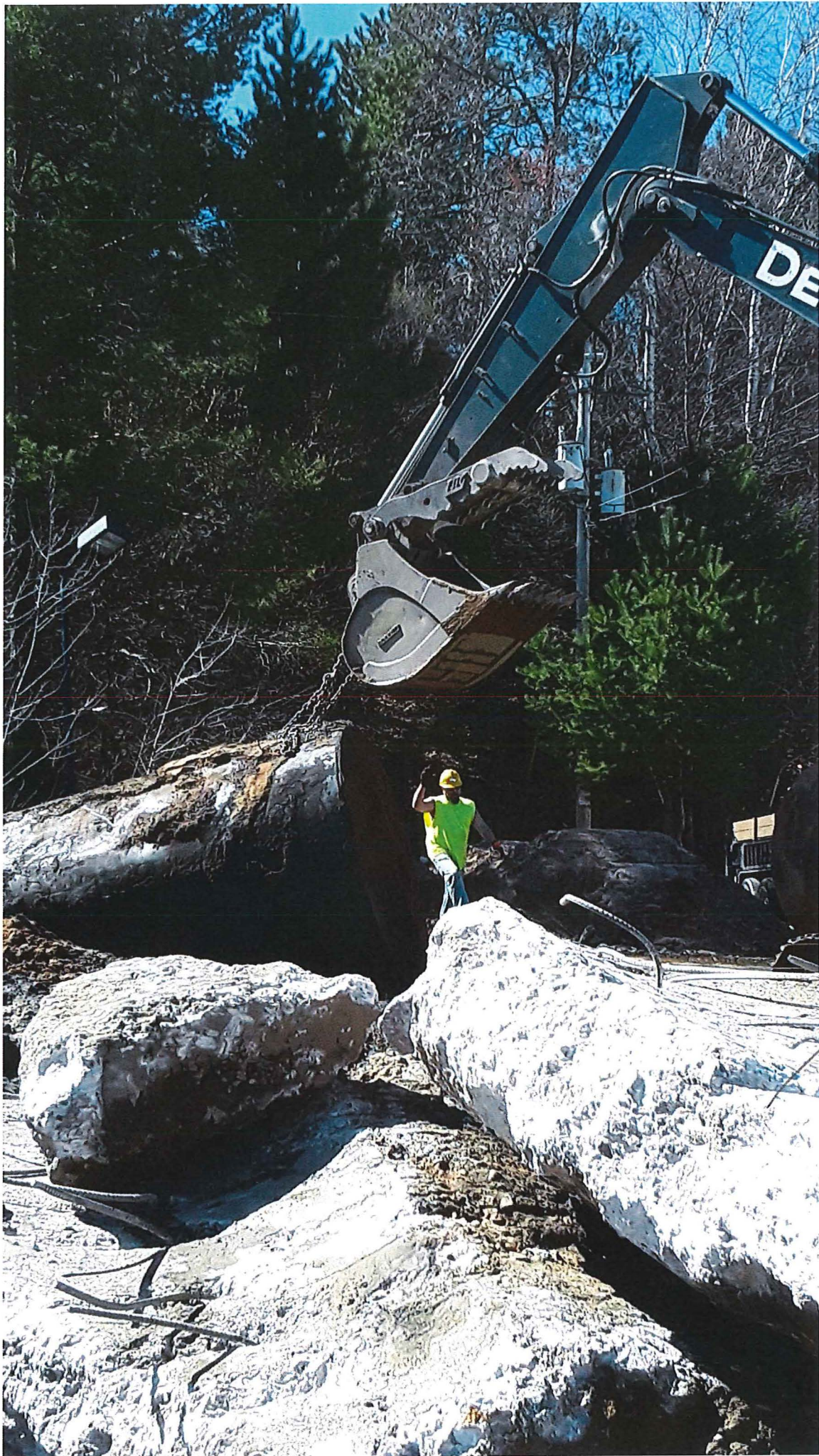
C. Stoltz



19

→ Concrete
on top
of
ranks

5/7/19
C. STOLTZ



20

Concrete
from
tanks

5/7/19

C. Stoltz



21

Concrete
on top of
walls

5/7/19

C. Stoltz



22

final
tank
removed

5/7/19

C. Stoltz