

DATE: January 11, 2001

FILE REF: 02-63-0256001

TO: Doug Joseph – WCR Eau Claire

FROM: Dave Carper - LaX

SUBJECT: Bender's Cleaners, Viroqua

**DAVE CARPER:**

**#02-63-256001** Bender's Cleaners, Viroqua, Vernon County

BEAP

**Requested – Closure with site specific letter and/or General Liability Clarification Letter**

This site was investigated as part of the City of Viroqua Municipal Water Supply Investigation funded as a BEAP, to investigate potential sources of persistent low levels of PCE (>2 ppb) in a water supply well serving the City. The site has been a PCE based dry cleaners since approximately 1960 and has been closed since 1998. A limited site investigation associated with a potential property sale discovered low levels of PCE (165 ppb) in the soil sample taken at 4-6 feet in one of five geoprobes taken at the site. Bedrock is encountered at 10-14 feet bgs, and groundwater occurs > 110 feet bgs.

The Department conducted 7 additional geoprobes at the site, with samples taken shallow (0-2 ft) and at bedrock refusal. The results indicate low levels of PCE in shallow soils at the site. Most samples ranged between ND and 0.55 ppb. The drain sample had a concentration of 18 ppb shallow and 0.051 ppb deep. Boring 4 had a shallow concentration of 260 ppb and ND deep.

The impacted municipal well is going to be abandoned this year because of it's age and low yield, a new well will be sited to replace it.



EPA RCLs

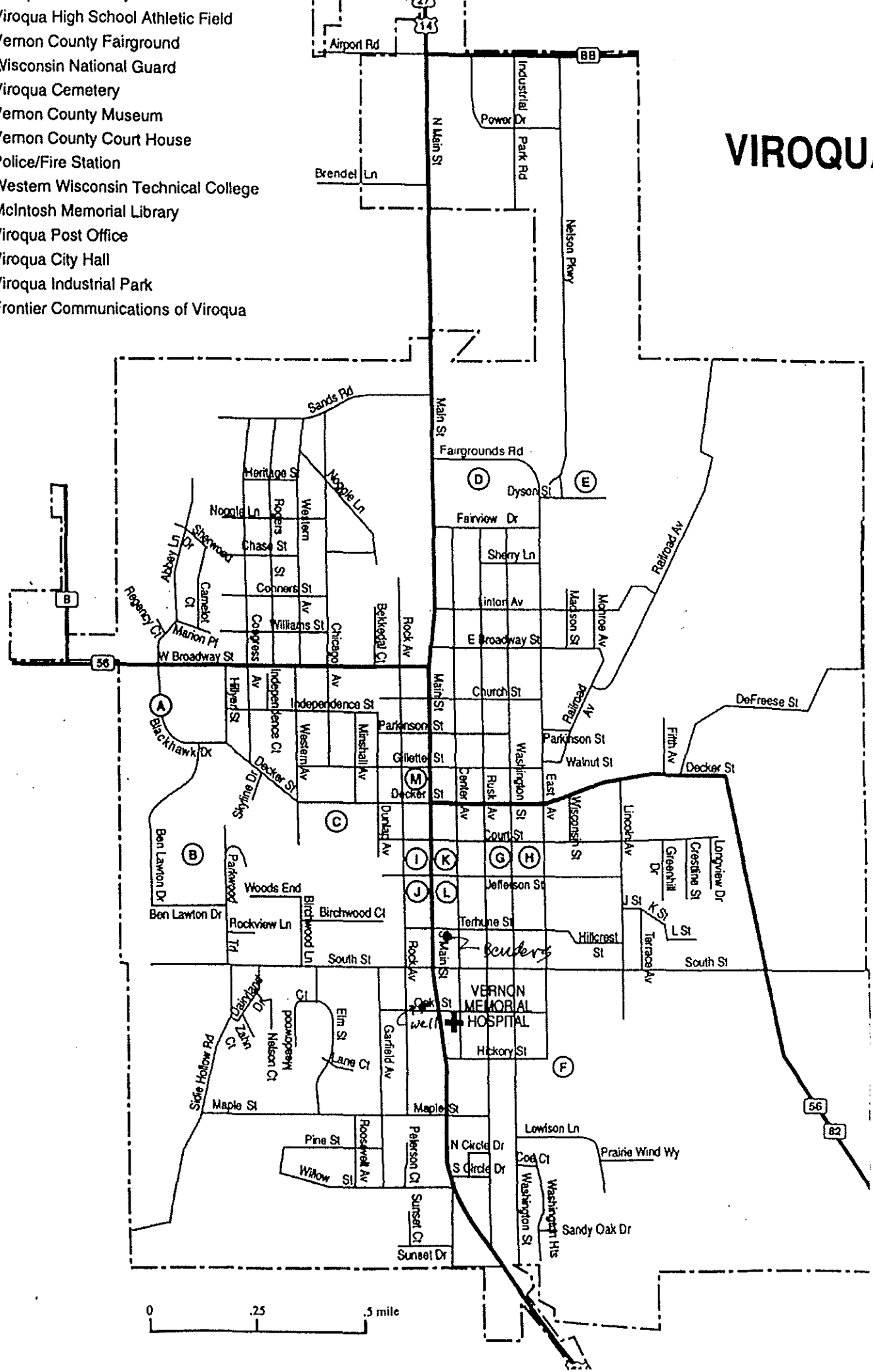
Table A-1 (continued)

Organics			Migration to ground water		
CAS No.	Compound	Ingestion (mg/kg)	Inhalation volatiles (mg/kg)	20 DAF (mg/kg)	1 DAF (mg/kg)
127-18-4	Tetrachloroethylene	12 <sup>e</sup>	11 <sup>e</sup>	0.06	0.003 <sup>f</sup>
108-88-3	Toluene	16,000 <sup>b</sup>	650 <sup>d</sup>	12	0.6
8001-35-2	Toxaphene	0.6 <sup>e</sup>	89 <sup>e</sup>	31	2
120-82-1	1,2,4-Trichlorobenzene	780 <sup>b</sup>	3,200 <sup>d</sup>	5	0.3 <sup>f</sup>
71-55-6	1,1,1-Trichloroethane	--- <sup>c</sup>	1,200 <sup>d</sup>	2	0.1
79-00-5	1,1,2-Trichloroethane	11 <sup>e</sup>	1 <sup>e</sup>	0.02	0.0009 <sup>f</sup>
79-01-6	Trichloroethylene	58 <sup>e</sup>	5 <sup>e</sup>	0.06	0.003 <sup>f</sup>
95-95-4	2,4,5-Trichlorophenol	7,800 <sup>b</sup>	--- <sup>c</sup>	270 <sup>b,i</sup>	14 <sup>b,i</sup>
88-06-2	2,4,6-Trichlorophenol	58 <sup>e</sup>	200 <sup>e</sup>	0.2 <sup>e,f,i</sup>	0.008 <sup>e,f,i</sup>
108-05-4	Vinyl acetate	78,000 <sup>b</sup>	1,000 <sup>b</sup>	170 <sup>b</sup>	8 <sup>b</sup>
75-01-4	Vinyl chloride	0.3 <sup>e</sup>	0.03 <sup>e</sup>	0.01 <sup>f</sup>	0.0007 <sup>f</sup>
108-38-3	<i>m</i> -Xylene	1.6E+05 <sup>b</sup>	420 <sup>d</sup>	210	10
95-47-6	<i>o</i> -Xylene	1.6E+05 <sup>b</sup>	410 <sup>d</sup>	190	9
106-42-3	<i>p</i> -Xylene	1.6E+05 <sup>b</sup>	460 <sup>d</sup>	200	10

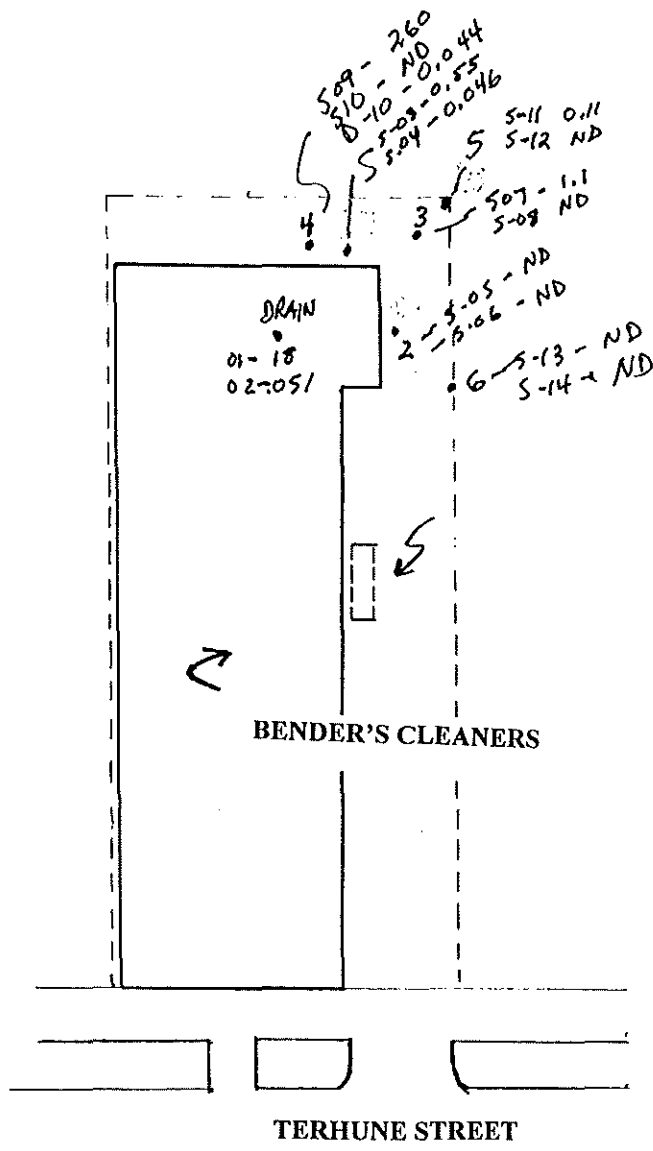
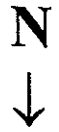
dilation attenuation factor

- C Viroqua High School Athletic Field
- D Vernon County Fairground
- E Wisconsin National Guard
- F Viroqua Cemetery
- G Vernon County Museum
- H Vernon County Court House
- I Police/Fire Station
- J Western Wisconsin Technical College
- K McIntosh Memorial Library
- L Viroqua Post Office
- M Viroqua City Hall
- N Viroqua Industrial Park
- O Frontier Communications of Viroqua

# VIROQUA

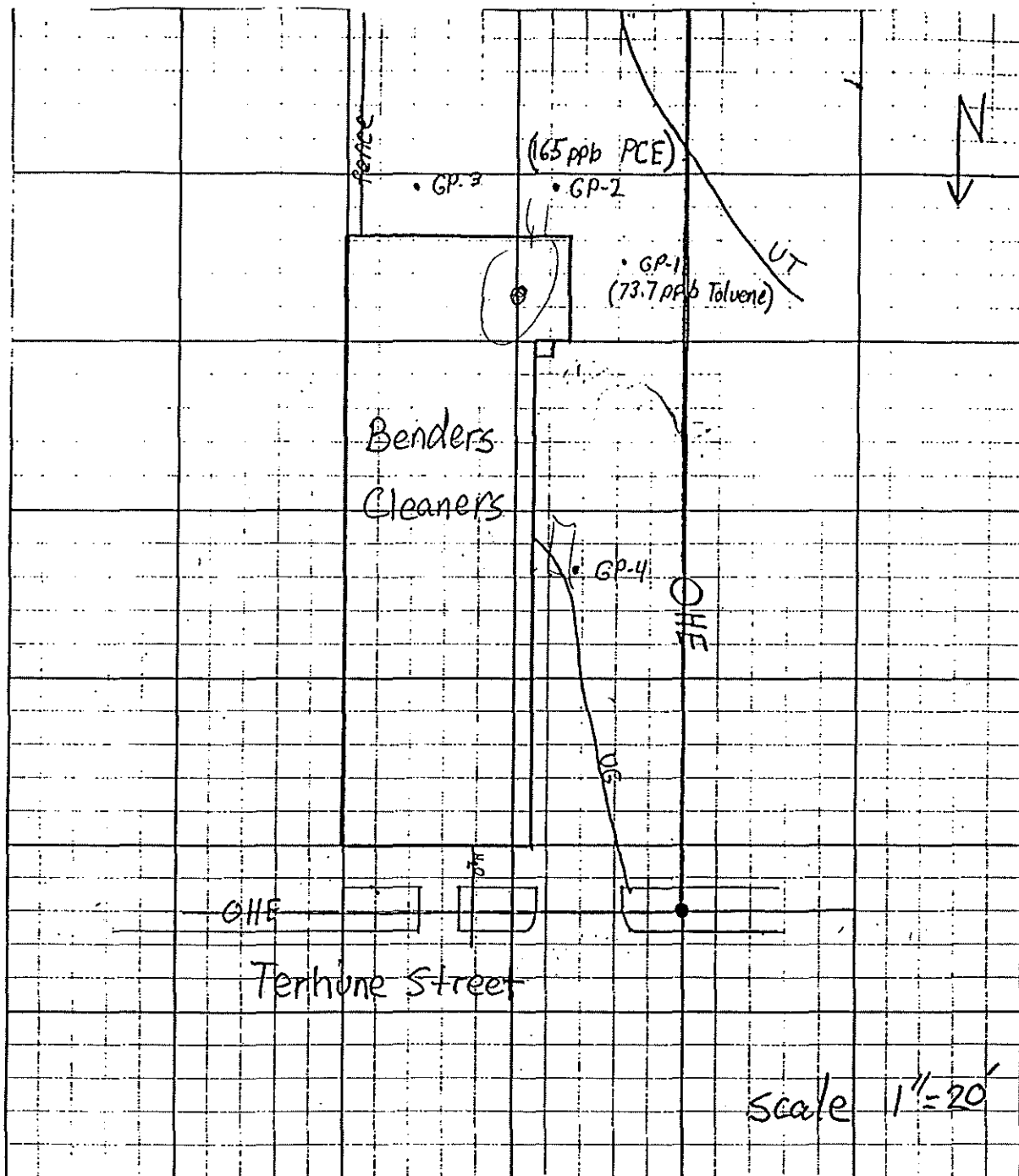


TCE  
ES 5.0 ppb  
PAC 0.5 ppb  
direct contact



**SITE LAYOUT MAP**

**FORMER BENDER'S CLEANERS  
VIROQUA, WISCONSIN**



- GP-1 8-10' refusal @ 10'
- GP-2 4-6' " " "
- 4-6' no refusal 12'
- 12-14' refusal @ 14'



**ENVIROGEN**

COST EFFECTIVE LEADERSHIP FOR A CLEANER ENVIRONMENT

FORMER BENDER'S CLEANERS  
VIROQUA, WISCONSIN

SITE PLAN VIEW

FIGURE NO.

2