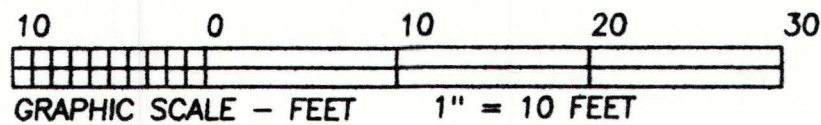
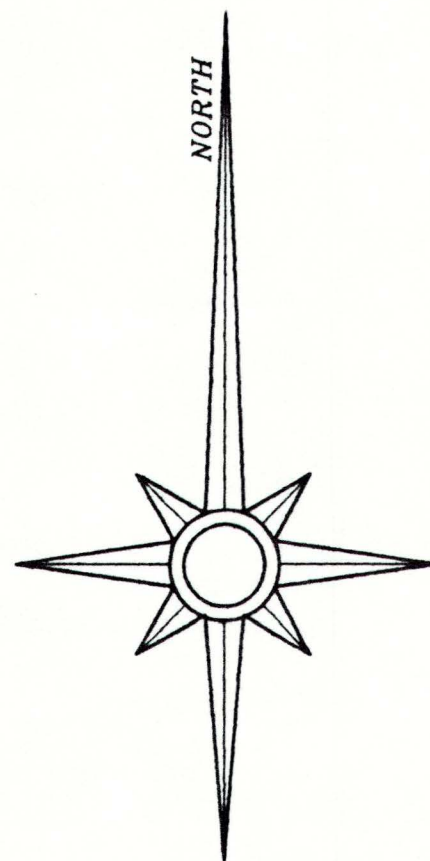
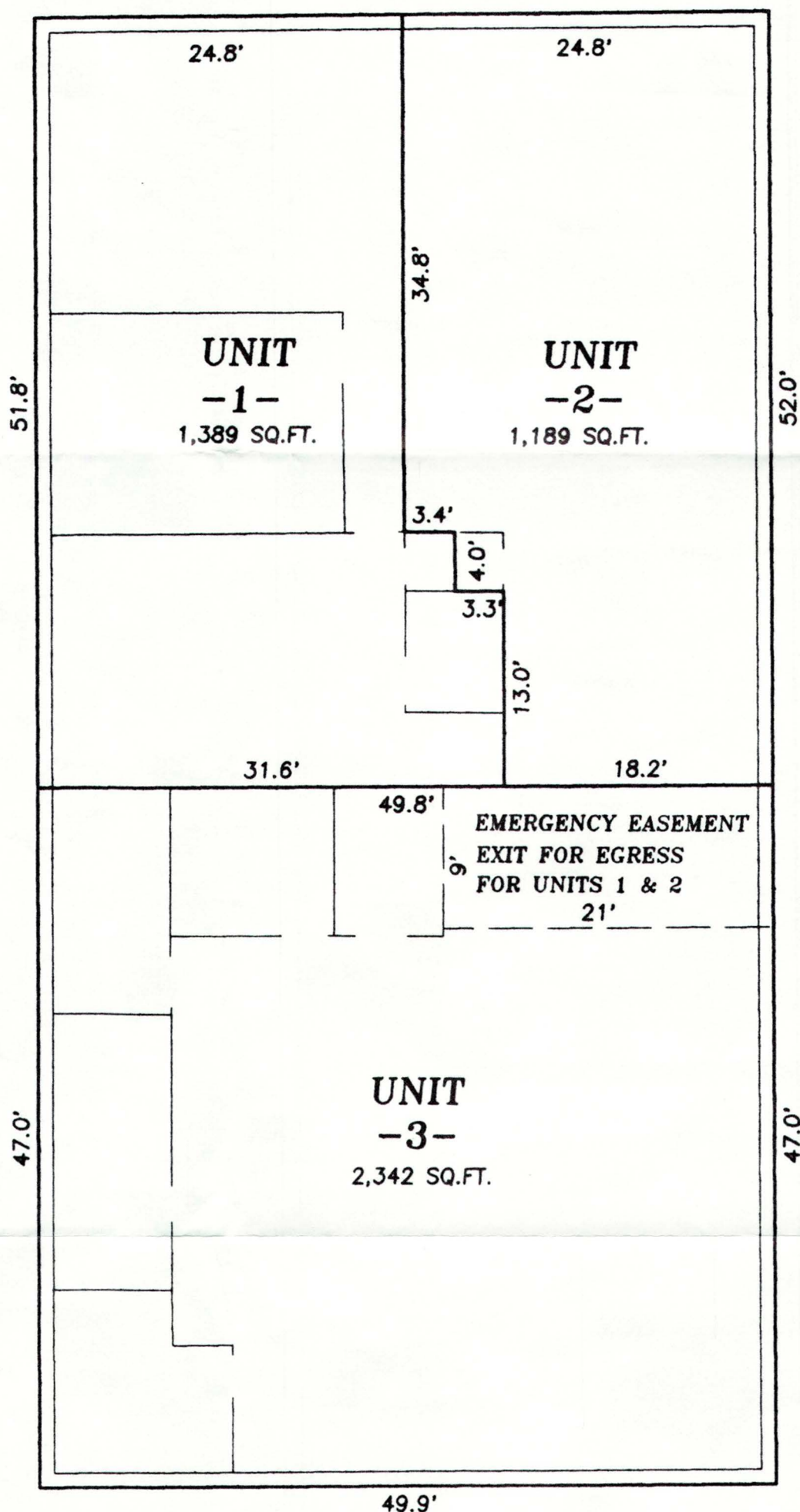
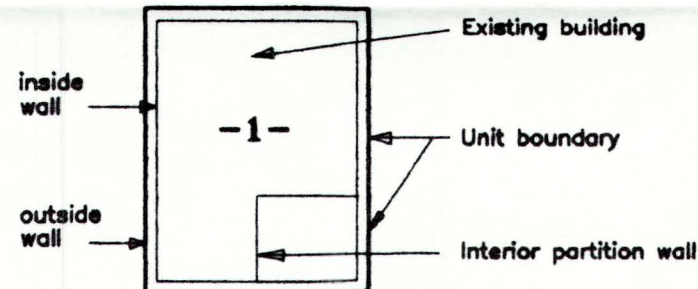


Wall Street Condominium

ALL OF LOT 5, BLOCK 8 OF THE ORIGINAL PLAT OF THE CITY OF EAGLE RIVER, SECTION 28, TOWNSHIP 40 NORTH, RANGE 10 EAST. CITY OF EAGLE RIVER, VILAS COUNTY, WISCONSIN.



LEGEND



FAVORITE SURVEYING, S.C.
Certified at Eagle River, Wisconsin,
dated this 25th day of October, 2001.

Stephen J. Favorite

Stephen J. Favorite
Registered Land Surveyor No. S-1616

#02-64-269753-B