



August 4, 2017

Richard Joslin  
Wisconsin Department of Natural Resources  
2984 Shawano Avenue  
Green Bay, WI 54313-6727

**Subject: Revised Work Scope and Change Order Request for Additional Site Investigation Activities  
Former Dutch Cleaners  
403 S. Main Street, Cedar Grove, Wisconsin  
BRRTS# 02-60-271527**

Dear Mr. Joslin:

On behalf of the responsible party (RP), Jere Ebbers, EnviroForensics, LLC (EnviroForensics) proposes to conduct additional site investigation work, which is associated with assessing the risk of vapor intrusion to the former Dutch Cleaners building and determine soil properties. This will require a change order to previously approved costs. An updated Form 4400-214D (Cost Detail Linking Spreadsheet) is attached.

In addition, EnviroForensics is requesting a variance to NR 169.13(3)(21.), and NR 169.23(3)(d)(2.) incorporated by reference. This is a variance from past rates of previous consultants as those rates are out of date and do not relate to EnviroForensics rate structure. A cost estimate with staff assignments and associated rates is attached.

EnviroForensics proposes to perform the following activities:

- Conduct two (2) paired sub-slab/indoor air sampling events, with one (1) event occurring during the winter months. Two (2) indoor air samples will be collected; one (1) in the basement, and one (1) on the first floor during each event. In addition, one sample of outside air will be collected during each event to determine background concentrations. Upon retrieving the air samples, sub-slab vapor samples will be collected within the basement of the building at the three (3) locations shown on the attached **Figure 1**;
- Collect two (2) samples of the upper silty clay soil near the location of MW-102 using a hand auger, and submit the samples to a laboratory for grain size analysis, atterberg limits, and USCS classification; and

- Continue collecting grab water samples from the basement sump to satisfy current sanitary discharge permit requirements established by the Village of Cedar Grove.

The following section describes the proposed sub-slab vapor sampling procedures in detail.

### **Indoor/background Air Sampling Procedures**

Prior to sampling, an inspection of the occupied spaces will be conducted to identify and inventory materials that could potentially contribute to indoor air conditions, unrelated to VI issues. Many common items such as commercially available cleaners and degreasers, small quantities of small engine fuel, furniture polish, cigarette smoke, etc. can affect the quality of indoor air in buildings. Suspect items identified during the inspection will be listed on a pre-sampling inspection form for later reference. A visual inspection will be conducted for cracks or other penetrations of the concrete floor (i.e. floor drains, sumps, etc.) that could be direct conduits for impacted vapors to migrate into the occupied space. The results of all pre-sampling inspection activities will be recorded on the Indoor Air Building Survey Form.

One (1) sample from the breathable space (3-5 feet above the floor) will be collected at a central location in the basement, and one (1) sample will be collected from a central location on the main (first) floor. In addition one (1) sample of outside air representing background conditions will be collected from an up-wind direction determined at the time of sampling. The samples will be collected using 6-Liter vacuum canisters, regulated to withdraw a time-integrated sample. The indoor and outdoor air samples will be collected over an 8-hour time period. Data will be assessed from the nearest fixed weather station throughout the 8-hour sampling period to gather data including: temperature, wind speed, wind direction, humidity, barometric pressure, and rainfall. Weather data and its possible affects on the sampling results will be assessed and discussed in the report. Initial and final pressure readings will be collected from the vacuum canisters and recorded on the Indoor Air Field Sampling Form (Attachment C), along with all other required information. The vacuum canisters will be individually-certified by Envision Laboratory of Indianapolis, Indiana (Envision) for QA/QC purposes.

A total of three (3) air cannisters collected during each of the two (2) sampling events will be sent to Envision under appropriate chain of custody documents to be analyzed for the dry cleaner list of chlorinated volatile organic compounds (CVOC's) according to US EPA Method TO-15. Envision is accredited through the National Environmental Accreditation Program (NELAP) for vapor sample analysis.

## **Sub-Slab Vapor Sampling Procedures**

Following indoor air sampling, Vapor Pin® sampling ports will be installed for the purpose of collecting sub-slab vapor samples.

### Sub-Slab Vapor Port Installation

A 5/8-inch hole will be drilled through the concrete slab at each sub-slab sample location using an electric hammer drill. The hole will be oversized to 1.25 inches to a depth of approximately one-half inch. The 1.25-inch hole is the correct size for accepting a small flush-mount cover that will complete the permanent installation. A vacuum cleaner will be utilized during drilling to remove concrete dust produced by the process. Vapor Pin® sampling ports, constructed with a silicon sleeve to provide a mechanical seal between the sample port and the slab, will be installed using a dead blow hammer.

### Sub-Slab Field Quality Control Methods

Sub-slab vapor ports will be purged prior to connecting the sampling canister to ensure that the entire sample is representative of sub-slab vapor conditions. To ensure that the collected sub-slab vapor samples are representative of subsurface vapor conditions, leak testing will be performed at each sample port during purging. Leak testing will be performed using the water dam method.

Immediately prior to sample collection, the integrity of the sample tubing and fittings will be tested by conducting a negative pressure test. The sample canister will be connected to the sampling port with its valve closed. A negative pressure of approximately 10-15 inches of mercury will be induced on the sampling train with a hand pump and held for approximately 60-seconds while the gauge is monitored visually. Drops in pressure during this procedure will indicate leakage within the sampling trains that will require correcting and then re-testing. The results of leak testing and pressure testing will be recorded on field sampling logs.

### Sub-Slab Vapor Sampling

The sub-slab vapor samples will be collected through dedicated Teflon-lined polyethylene tubing connected to the sampling port. In accordance with the U.S. Environmental Protection Agency (EPA) Standard Operating Procedure (SOP), approximately two (2) liters of ambient air will be purged from the tubing prior to initiating sample collection. Following purging, sub-slab vapors at each point will be drawn from the end of the tubing using a low-level photo-ionization

detector instrument and the readings will be recorded on the sample forms and laboratory canister labels. Sub-slab vapor will then be drawn into a 6-liter vacuum sample canister fitted with laboratory supplied regulators that allow a flow rate of approximately 200 ml/min.

A total of three (3) sub-slab vapor samples collected during each of the two (2) sampling events will be submitted, under appropriate chain-of-custody procedures, to Envision Laboratory of Indianapolis, Indiana for analysis of the *Dry Cleaners List* of CVOCs according to US EPA Method TO-15. The sampling ports will be left in place for future sampling and abandoned at a later date.

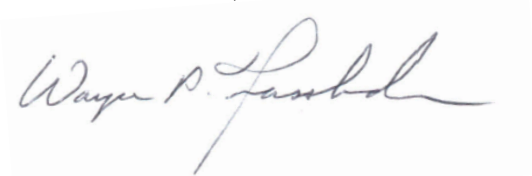
### **Data Evaluation and Reporting**

The sub-slab vapor sample results will be reported to building occupants within 10 days of receiving laboratory results as required. The report will consist of a brief letter, a map showing the sampling locations, and a table with a summary of the data and comparisons to vapor risk screening levels (VRSLs).

If you have any questions or require additional information, please do not hesitate to contact me at (414) 982-3988, or by email at [wfassbender@enviroforensics.com](mailto:wfassbender@enviroforensics.com).

Sincerely,

**EnviroForensics, LLC**

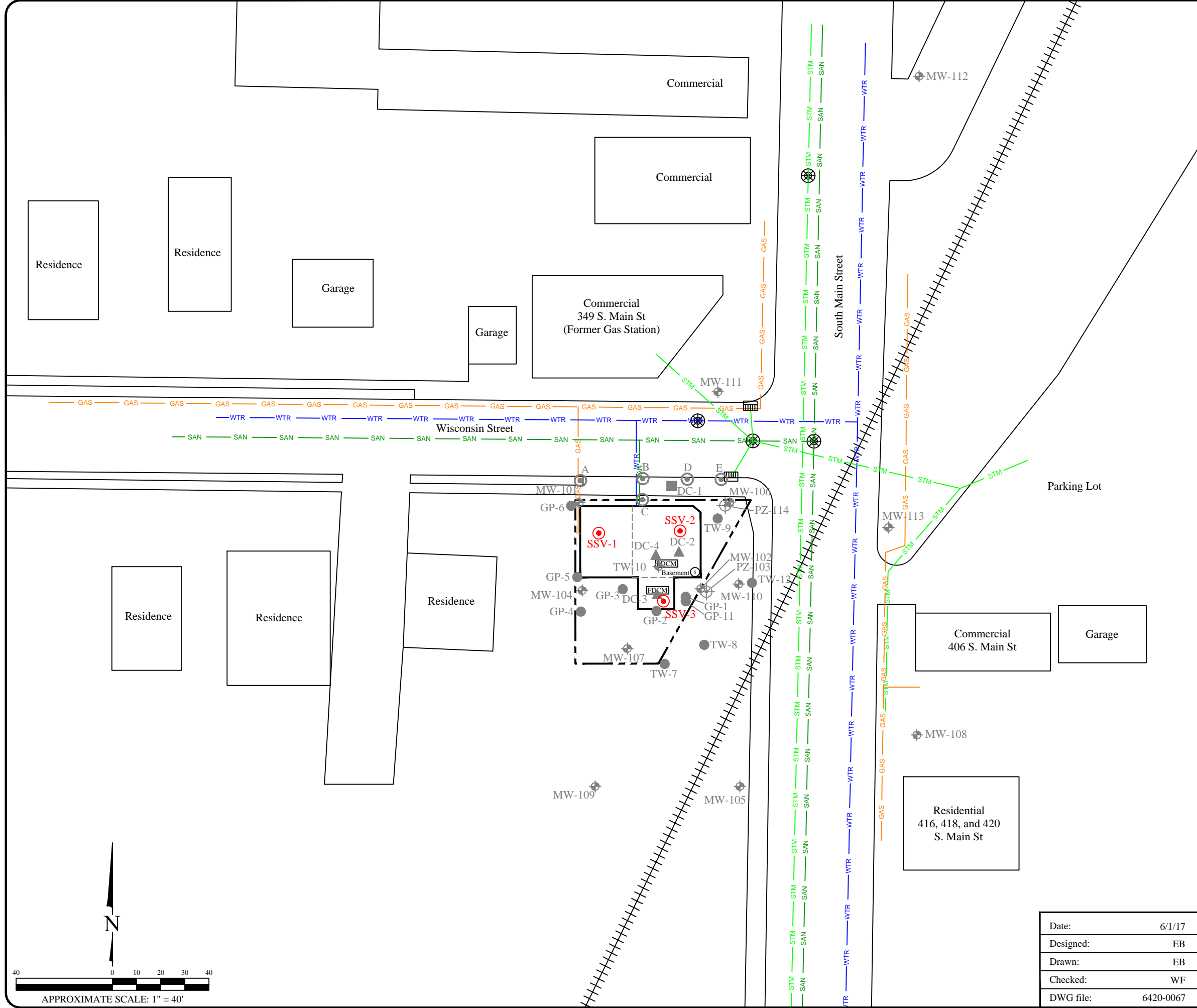
A handwritten signature in black ink that reads "Wayne P. Fassbender".

Wayne Fassbender, PG  
*Senior Project Manager*

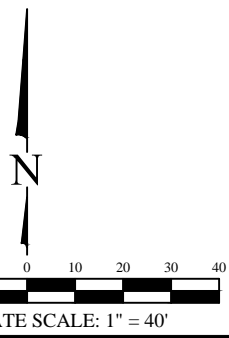
Attachments:

Figure 1- Site Map Showing the Locations of Proposed Sub-slab Vapor Samples  
Form 4400-214D  
EnviroForensics Detailed Cost Breakdown Sheets  
Hydrogeologist Certification Statement

Copy: Jere Ebbers  
Tom and Marilyn Berlin



- ### Legend
- Property boundary
  - GAS Underground gas utility line
  - WTR Underground water utility line
  - SAN Underground sanitary utility line
  - STM Underground storm utility line
  - Catch Basin
  - Manhole
  - Sump
  - FDCM Former dry cleaning machine location
  - MW-101 Monitoring well (By Others)
  - GP-1 Soil boring (By Others)
  - PZ-103 Piezometer (By Others)
  - A Soil gas sample (By Others)
  - DC-1 Outdoor air sample (By Others)
  - DC-2 Indoor air sample (By Others)
  - SSV-1 Proposed Sub-slab vapor sample



**SITE MAP SHOWING THE LOCATIONS OF PROPOSED SUB-SLAB VAPOR SAMPLES**

Former Dutch Cleaners  
403 South Main Street  
Cedar Grove, Wisconsin

Date:	6/1/17
Designed:	EB
Drawn:	EB
Checked:	WF
DWG file:	6420-0067

ENVIRONMENTAL FORENSIC INVESTIGATIONS, INC.  
825 North Capitol Avenue • Indianapolis, IN 46204  
EnviroForensics.com

Figure	1
Project	6420



**TABLE 1**  
**REVISED SITE INVESTIGATION COST ESTIMATE**  
**Former Dutch Cleaners**  
**Cedar Grove, WI**

TASK	LABOR COSTS	SUB-CONTRACTOR COSTS	DIRECT COSTS	PHASE COST
<b>Phase 1a</b>				
Work Scope Development	\$3,303	\$0	\$17	<b>\$3,320</b>
<b>Phase 1b</b>				
Site Investigation Field Work	\$3,980	\$2,874	\$1,347	<b>\$8,200</b>
<b>Phase 1c</b>				
Data Evaluation and Reporting	\$2,245	\$0	\$169	<b>\$2,414</b>
<b>Phase 1d</b>				
Project Coordination & Management	\$1,560	\$0	\$3	<b>\$1,563</b>
<b>TOTAL</b>	<b>\$11,088</b>	<b>\$2,874</b>	<b>\$1,536</b>	<b>\$15,497</b>

Project Title:  
 Project Number/Name:  
 Date:

Site Investigation  
 6420 / Former Dutch Cleaners  
 8/4/2017



Phase 1a Work Scope Development						
<b>Labor - Field</b>						
Principal	\$200.00	hr			\$0.00	Task Total
Director	\$175.00	hr			\$0.00	
Sr Project Manager	\$155.00	hr			\$0.00	
Sr Professional	\$155.00	hr			\$0.00	
Project Manager	\$130.00	hr			\$0.00	
Project Professional	\$130.00	hr			\$0.00	
Staff Professional-Office	\$120.00	hr			\$0.00	
Staff Professional-Field	\$120.00	hr			\$0.00	
Field Professional	\$95.00	hr			\$0.00	
Drafting	\$85.00	hr			\$0.00	
Admin	\$65.00	hr			\$0.00	
Compliance Specialist					\$0.00	
Vapor Intrusion Specialist					\$0.00	
Health and Safety Specialist					\$0.00	
					\$0.00	
<b>Labor - Office/Reporting</b>						
Principal	\$200.00	hr			\$0.00	Task Total
Director	\$175.00	hr	0.5		\$87.50	
Sr Project Manager	\$155.00	hr	10.0		\$1,550.00	
Sr Professional	\$155.00	hr			\$0.00	
Project Manager	\$130.00	hr	6.0		\$780.00	
Project Professional	\$130.00	hr			\$0.00	
Staff Professional-Office	\$120.00	hr	4.0		\$480.00	
Staff Professional-Field	\$120.00	hr			\$0.00	
Field Professional	\$95.00	hr			\$0.00	
Drafting	\$85.00	hr	4.0		\$340.00	
Admin	\$65.00	hr	1.0		\$65.00	
Compliance Specialist					\$0.00	
Vapor Intrusion Specialist					\$0.00	
Health and Safety Specialist			0.5		\$0.00	
		hr			\$0.00	
<b>Contractors/Consultants</b>						
Utility Locate		LS		1.00	\$0.00	Task Total
Driller		LS		1.00	\$0.00	
Surveyor		LS		1.00	\$0.00	
Waste Disposal		LS		1.00	\$0.00	
WDR Review Fee		LS		1.00	\$0.00	
Remediation		LS		1.00	\$0.00	
				1.00	\$0.00	
				1.00	\$0.00	
				1.00	\$0.00	
				1.00	\$0.00	
				1.00	\$0.00	<b>\$0.00</b>
<b>Contractor/Consultant - Laboratory</b>						
Soil VOC 8260 dry wt	\$71.93	ea		1.00	\$0.00	Task Total
Soil VOC 8260 dry wt QA/QC	\$71.93	ea		1.00	\$0.00	
GW VOC 8260	\$71.93	ea		1.00	\$0.00	
GW VOC 8260 QA/QC	\$71.93	ea		1.00	\$0.00	
Air TO-15 -- Soil Gas		ea		1.00	\$0.00	
Air TO-15 -- Sub-Slab	\$40.00	ea		1.00	\$0.00	
Air TO-15 -- Indoor Air	\$110.00	ea		1.00	\$0.00	
Air - Individual Certification	\$50.00	ea		1.00	\$0.00	
Air - Batch Certification	\$35.00	LS		1.00	\$0.00	
Trip Blank VOCs 8260	\$71.93	ea		1.00	\$0.00	
Level IV QA/QC (15%)					\$0.00	
					\$0.00	
<b>Direct Costs - Expenses</b>						
Hotel	\$120.00	day		1.00	\$0.00	Task Total
Meals	\$60.00	LS		1.00	\$0.00	
Misc Materials		LS		1.00	\$0.00	
WDR File Copy		LS		1.00	\$0.00	
					\$0.00	
					\$0.00	
					\$0.00	
					\$0.00	

	Direct Costs - Chargeable Equipment Expense	Rate (hr/unit)	# Hrs/Units	Rate (day/use)	# days/use	Subtotal
Vehicles	Field Vehicle - Full Day	\$ 20.00		\$ 130.00		
	Mileage at Federal IRS Reimbursement Rate (used only for daily use over 230 miles)	\$ 0.56				
Meters	Air Velocity Meter (per use)			\$ 25.00		
	Multi-meter Conductivity/pH/Temp/TDS			\$ 165.00		
	Dissolved Oxygen Meter			\$ 40.00		
	FID Foxboro/Sensidyne (TIP)			\$ 155.00		
	Flow Calibrator			\$ 30.00		
	PID or 580 OVM			\$ 120.00		
	Turbidity Meter			\$ 30.00		
	ppb RAE			\$ 175.00		
Pumps	ORP Meter			\$ 30.00		
	Air Pump - Low Flow (Barcad)			\$ 25.00		
	Development Pump			\$ 130.00		
	Electric Submersible Pump with Control Box (Units)			\$ 130.00		
	Low-Flow Sampling Bladder	\$ 12.00				
	Peristaltic Pump			\$ 105.00		
	Pumping Test Accessory Equipment (Flow Meters/Manifold)	\$ 100.00				
	Portable SVE Unit - 1.5 HP			\$ 155.00		
Other	Intrinsically Safe Vapor Evacuation Blower			\$ 125.00		
	Pneumatic Low-Flow Sampling Kit w/ Flow Cell and Multimeter			\$ 270.00		
	Asbestos Sampling Kit			\$ 250.00		
	Asbestos Investigation Supplies			\$ 130.00		
	Asbestos Sampling Core	\$ 2.50				
	Bailers (Disposable)	\$ 10.00				
	Bailers (Non-Disposable)			\$ 15.00		
	Core Boxes	\$ 10.00				
	Core Sampler			\$ 55.00		
	Data Logger with Transducer			\$ 155.00		
	Well Caps	\$ 30.00				
	Elec. Well Sounder (Probe)			\$ 30.00		
	Metal Detector			\$ 50.00		
	5035 Sample Kit	\$ 16.00				
	Field Book	\$ 11.00				
	Filter - Large	\$ 18.00				
	Filter - Small	\$ 9.00				
	Generator			\$ 105.00		
	Hand Auger			\$ 30.00		
	Helium QA/QC Kit			\$ 265.00		
	Helium QA/QC Accessories	\$ 20.00				
	Oil/Water Interface Probe			\$ 105.00		
	Padlocks	\$ 15.00				
	Steam Cleaner			\$ 130.00		
	Transducer (ea)			\$ 40.00		
	Coring Machine			\$ 200.00		
	Rotary Hammer Drill			\$ 170.00		
	Hand Drill			\$ 75.00		
	Tubing (Bonded) - Polyethylene (Teflon): 1/4" OD X 3/8" C	\$ 1.50				
	Tubing (Bonded) - Polyethylene (Teflon): 1/4" OD X 1/4" C	\$ 1.20				
	Tubing (Bonded) - Polyethylene (Teflon): 1/16" OD X 1/4"	\$ 1.25				
	Tubing (Bonded) - Polyethylene: 1/4" OD X 3/8" OD (per f	\$ 1.10				
	Tubing - Polyethylene: 1/4" OD (per foot)	\$ 0.60				
	Tubing - Polyethylene: 1/2" OD (per foot)	\$ 0.85				
	Tubing - Tygon: 3/8" STD (per foot)	\$ 4.45				
	Tubing - Silicone: 3/8" STD (per foot)	\$ 4.50				
	PFA Tubing - 1/2-inch ID	\$ 5.00				
	55-Gallon Drum	\$ 55.00				
	Temporary Sampling Port	\$ 25.00				
	Vapor Pin Sub-Slab Sampling Port	\$ 75.00				
	Sub-Slab Cover (Stainless Steel)	\$ 40.00				
	Well Cover 8X12"	\$ 105.00				
Measuring Wheel			\$ 15.00			
Camera			\$ 25.00			
1L Tedlar Bag	\$ 20.00					
Radon Sample Kit	\$ 30.00					
HAZMAT Exemption Shipper	\$ 40.00					
Manometers	\$ 105.00					
Westlaw	\$ 105.00					
CAD/drafting/graphics	\$ 90.00					
Safety	Cones, Baracades & Traffic Signs			\$ 10.00		
	Gloves (Chemical Resistant)	\$ 10.00				
	Level "B": Level "C1" plus SCBA			\$ 210.00		
	Level "C1": Level "C2" plus Polycoat Suit			\$ 85.00		
	Level "C2": Level "D" plus Respirator			\$ 40.00		
	Standby SCBA			\$ 130.00		
Routine Field and Safety Equipment			\$ 130.00			
Production	1 Inch Binder	\$ 9.00				
	2 Inch Binder	\$ 12.00				
	3 Inch Binder	\$ 15.00				
	4 Inch Binder	\$ 22.00				
	Binder Tabs (Set of 8)	\$ 5.00				
	Color Copies	\$ 0.40	6			\$ 2.40
	B/W Copies	\$ 0.25				
Document - Format/Sending	\$ 15.00	1			\$ 15.00	
Report CD Copy	\$ 5.00					
						\$17.40
<b>PHASE TOTAL</b>						<b>\$3,319.90</b>



Project Title:  
 Project Number/Name:  
 Date:

Site Investigation  
 6420 / Former Dutch Cleaners  
 8/4/2017



Phase 1b Site Investigation Field Work						
Labor - Field	Price	Unit	# Units		Subtotal	Task Total
Principal	\$200.00	hr			\$0.00	
Director	\$175.00	hr			\$0.00	
Sr Project Manager	\$155.00	hr			\$0.00	
Sr Professional	\$155.00	hr			\$0.00	
Project Manager	\$130.00	hr			\$0.00	
Project Professional	\$130.00	hr			\$0.00	
Staff Professional-Office	\$120.00	hr			\$0.00	
Staff Professional-Field	\$120.00	hr			\$0.00	
Field Professional	\$95.00	hr	30.0		\$2,850.00	
Drafting	\$85.00	hr			\$0.00	
Admin	\$65.00	hr			\$0.00	
Compliance Specialist					\$0.00	
Vapor Intrusion Specialist					\$0.00	
Health and Safety Specialist					\$0.00	
		hr			\$0.00	
					\$2,850.00	\$2,850.00

Labor - Office/Reporting	Price	Unit	# Units		Subtotal	Task Total
Principal	\$200.00	hr			\$0.00	
Director	\$175.00	hr			\$0.00	
Sr Project Manager	\$155.00	hr	2.0		\$310.00	
Sr Professional	\$155.00	hr			\$0.00	
Project Manager	\$130.00	hr	1.0		\$130.00	
Project Professional	\$130.00	hr			\$0.00	
Staff Professional-Office	\$120.00	hr	1.0		\$120.00	
Staff Professional-Field	\$120.00	hr			\$0.00	
Field Professional	\$95.00	hr	6.0		\$570.00	
Drafting	\$85.00	hr			\$0.00	
Admin	\$65.00	hr			\$0.00	
Compliance Specialist					\$0.00	
Vapor Intrusion Specialist					\$0.00	
Health and Safety Specialist					\$0.00	
		hr			\$0.00	
					\$1,130.00	\$1,130.00

Contractors/Consultants	Price	Unit	# Units	Markup	Subtotal	Task Total
Utility Locate		LS		1.00	\$0.00	
Driller		LS		1.00	\$0.00	
Surveyor		LS		1.00	\$0.00	
Waste Disposal		LS		1.00	\$0.00	
WDNR Review Fee		LS		1.00	\$0.00	
Remediation		LS		1.00	\$0.00	
				1.00	\$0.00	
				1.00	\$0.00	
				1.00	\$0.00	
					\$0.00	\$0.00

Contractor/Consultant - Laboratory	Price	Unit	# Units	Markup	Subtotal	Task Total
Soil VOC 8260 dry wt	\$71.93	ea		1.00	\$0.00	
Soil VOC 8260 dry wt QA/QC	\$71.93	ea		1.00	\$0.00	
GW VOC 8260	\$71.93	ea	1.0	1.00	\$71.93	
GW VOC 8260 QA/QC	\$71.93	ea		1.00	\$0.00	
Air TO-15 -- Soil Gas		ea		1.00	\$0.00	
Air TO-15 -- Sub-Slab	\$180.00	ea	6.0	1.00	\$1,080.00	
Air TO-15 -- Indoor Air	\$180.00	ea	6.0	1.00	\$1,080.00	
Air - Individual Certification	\$50.00	ea	6.0	1.00	\$300.00	
Air - Batch Certification	\$50.00	LS	2.0	1.00	\$100.00	
Trip Blank VOCs 8260	\$71.93	ea	1.0	1.00	\$71.93	
Atterberg Limits	\$75.00	ea	1.0	1.00	\$75.00	
Grain Size and Sieve Analysis	\$95.00	ea	1.0	1.00	\$95.00	
					\$2,873.86	\$2,873.86

Direct Costs - Expenses	Price	Unit	# Units	Markup	Subtotal	Task Total
Hotel	\$120.00	day		1.00	\$0.00	
Meals	\$60.00	LS		1.00	\$0.00	
Misc Materials		LS		1.00	\$0.00	
Equipment Rental		LS		1.00	\$0.00	
					\$0.00	
					\$0.00	
					\$0.00	
					\$0.00	
					\$0.00	
					\$0.00	\$0.00

	Direct Costs - Chargeable Equipment Expense	Rate (hr/unit)	# Hrs/Units	Rate (day/use)	# days/use	Subtotal
Vehicles	Field Vehicle - Full Day	\$ 20.00		\$ 130.00	\$ 2.00	\$ 260.00
	Mileage at Federal IRS Reimbursement Rate (used only for daily use over 230 miles)	\$ 0.56				
Meters	Air Velocity Meter (per use)			\$ 25.00		
	Multi-meter Conductivity/pH/Temp/TDS			\$ 165.00		
	Dissolved Oxygen Meter			\$ 40.00		
	FID Foxboro/Sensidyne (TIP)			\$ 155.00		
	Flow Calibrator			\$ 30.00		
	PID or 580 OVM			\$ 120.00	\$ 1.00	\$ 120.00
	Turbidity Meter			\$ 30.00		
	ppb RAE			\$ 175.00		
Pumps	ORP Meter			\$ 30.00		
	Air Pump - Low Flow (Barcad)			\$ 25.00		
	Development Pump			\$ 130.00		
	Electric Submersible Pump with Control Box (Units)			\$ 130.00		
	Low-Flow Sampling Bladder	\$ 12.00				
	Peristaltic Pump			\$ 105.00	\$ 2.00	\$ 210.00
	Pumping Test Accessory Equipment (Flow Meters/Manifold)	\$ 100.00				
	Portable SVE Unit - 1.5 HP			\$ 155.00		
Other	Intrinsically Safe Vapor Evacuation Blower			\$ 125.00		
	Pneumatic Low-Flow Sampling Kit w/ Flow Cell and Multimeter			\$ 270.00		
	Asbestos Sampling Kit			\$ 250.00		
	Asbestos Investigation Supplies			\$ 130.00		
	Asbestos Sampling Core	\$ 2.50				
	Bailers (Disposable)	\$ 10.00				
	Bailers (Non-Disposable)			\$ 15.00		
	Core Boxes	\$ 10.00				
	Core Sampler			\$ 55.00		
	Data Logger with Transducer			\$ 155.00		
	Well Caps	\$ 30.00				
	Elec. Well Sounder (Probe)			\$ 30.00		
	Metal Detector			\$ 50.00		
	5035 Sample Kit	\$ 16.00				
	Field Book	\$ 11.00				
	Filter - Large	\$ 18.00				
	Filter - Small	\$ 9.00				
	Generator			\$ 105.00		
	Hand Auger			\$ 30.00	\$ 1.00	\$ 30.00
	Helium QA/QC Kit			\$ 265.00		
	Helium QA/QC Accessories	\$ 20.00				
	Oil/Water Interface Probe			\$ 105.00		
	Padlocks	\$ 15.00				
	Steam Cleaner			\$ 130.00		
	Transducer (ea)			\$ 40.00		
	Coring Machine			\$ 200.00		
	Rotary Hammer Drill			\$ 170.00	\$ 0.50	\$ 85.00
	Hand Drill			\$ 75.00		
	Tubing (Bonded) - Polyethylene (Teflon): 1/4" OD X 3/8" O	\$ 1.50				
	Tubing (Bonded) - Polyethylene (Teflon): 1/4" OD X 1/4" O	\$ 1.20				
	Tubing (Bonded) - Polyethylene (Teflon): 1/16" OD X 1/4"	\$ 1.25				
	Tubing (Bonded) - Polyethylene: 1/4" OD X 3/8" OD (per f	\$ 1.10				
	Tubing - Polyethylene: 1/4" OD (per foot)	\$ 0.60				
	Tubing - Polyethylene: 1/2" OD (per foot)	\$ 0.85				
	Tubing - Tygon: 3/8" STD (per foot)	\$ 4.45				
	Tubing - Silicone: 3/8" STD (per foot)	\$ 4.50	\$ 3.00			\$ 13.50
PFA Tubing - 1/2-inch ID	\$ 5.00					
55-Gallon Drum	\$ 55.00					
Temporary Sampling Port	\$ 25.00					
Vapor Pin Sub-Slab Sampling Port	\$ 75.00	\$ 3.00			\$ 225.00	
Sub-Slab Cover (Stainless Steel)	\$ 40.00	\$ 3.00			\$ 120.00	
Well Cover 8X12"	\$ 105.00					
Measuring Wheel			\$ 15.00	\$ 1.00	\$ 15.00	
Camera			\$ 25.00			
1L Tedlar Bag	\$ 20.00					
Radon Sample Kit	\$ 30.00					
HAZMAT Exemption Shipper	\$ 40.00					
Manometers	\$ 105.00					
Westlaw	\$ 105.00					
CAD/drafting/graphics	\$ 90.00					
Safety	Cones, Baracades & Traffic Signs			\$ 10.00		
	Gloves (Chemical Resistant)	\$ 10.00				
	Level "B": Level "C1" plus SCBA			\$ 210.00		
	Level "C1": Level "C2" plus Polycoat Suit			\$ 85.00		
	Level "C2": Level "D" plus Respirator			\$ 40.00		
	Standby SCBA			\$ 130.00		
Routine Field and Safety Equipment			\$ 130.00	\$ 2.00	\$ 260.00	
Production	1 Inch Binder	\$ 9.00				
	2 Inch Binder	\$ 12.00				
	3 Inch Binder	\$ 15.00				
	4 Inch Binder	\$ 22.00				
	Binder Tabs (Set of 8)	\$ 5.00				
	Color Copies	\$ 0.40	20			\$ 8.00
	B/W Copies	\$ 0.25				
	Document - Format/Sending	\$ 15.00				
Report CD Copy	\$ 5.00					
						\$1,346.50
<b>PHASE TOTAL</b>						<b>\$8,200.36</b>



	Direct Costs - Chargeable Equipment Expense	Rate (hr/unit)	# Hrs/Units	Rate (day/use)	# days/use	Subtotal
Vehicles	Field Vehicle - Full Day	\$ 20.00		\$ 130.00		
	Mileage at Federal IRS Reimbursement Rate (used only for daily use over 230 miles)	\$ 0.560				
Meters	Air Velocity Meter (per use)			\$ 25.00		
	Multi-meter Conductivity/pH/Temp/TDS			\$ 165.00		
	Dissolved Oxygen Meter			\$ 40.00		
	FID Foxboro/Sensidyne (TIP)			\$ 155.00		
	Flow Calibrator			\$ 30.00		
	PID or 580 OVM			\$ 120.00		
	Turbidity Meter			\$ 30.00		
	ppb RAE			\$ 175.00		
Pumps	ORP Meter			\$ 30.00		
	Air Pump - Low Flow (Barcad)			\$ 25.00		
	Development Pump			\$ 130.00		
	Electric Submersible Pump with Control Box (Units)			\$ 130.00		
	Low-Flow Sampling Bladder	\$ 12.00				
	Peristaltic Pump			\$ 105.00		
	Pumping Test Accessory Equipment (Flow Meters/Manifold)	\$ 100.00				
	Portable SVE Unit - 1.5 HP			\$ 155.00		
Other	Intrinsically Safe Vapor Evacuation Blower			\$ 155.00		
	Pneumatic Low-Flow Sampling Kit w/ Flow Cell and Multimeter			\$ 270.00		
	Asbestos Sampling Kit			\$ 250.00		
	Asbestos Investigation Supplies			\$ 130.00		
	Asbestos Sampling Core	\$ 2.50				
	Bailers (Disposable)	\$ 10.00				
	Bailers (Non-Disposable)			\$ 15.00		
	Core Boxes	\$ 10.00				
	Core Sampler			\$ 55.00		
	Data Logger with Transducer			\$ 155.00		
	Well Caps	\$ 30.00				
	Elec. Well Sounder (Probe)			\$ 30.00		
	Metal Detector			\$ 50.00		
	5035 Sample Kit	\$ 16.00				
	Field Book	\$ 11.00				
	Filter - Large	\$ 18.00				
	Filter - Small	\$ 9.00				
	Generator			\$ 105.00		
	Hand Auger			\$ 30.00		
	Helium QA/QC Kit			\$ 265.00		
	Helium QA/QC Accessories	\$ 20.00				
	Oil/Water Interface Probe			\$ 105.00		
	Padlocks	\$ 15.00				
	Steam Cleaner			\$ 130.00		
	Transducer (ea)			\$ 40.00		
	Coring Machine			\$ 200.00		
	Rotary Hammer Drill			\$ 170.00		
	Hand Drill			\$ 75.00		
	Tubing (Bonded) - Polyethylene (Teflon): 1/4" OD X 3/8" O	\$ 1.50				
	Tubing (Bonded) - Polyethylene (Teflon): 1/4" OD X 1/4" O	\$ 1.20				
	Tubing (Bonded) - Polyethylene (Teflon): 1/16" OD X 1/4"	\$ 1.25				
	Tubing (Bonded) - Polyethylene: 1/4" OD X 3/8" OD (per f	\$ 1.10				
	Tubing - Polyethylene: 1/4" OD (per foot)	\$ 0.60				
	Tubing - Polyethylene: 1/2" OD (per foot)	\$ 0.85				
	Tubing - Tygon: 3/8" STD (per foot)	\$ 4.45				
	Tubing - Silicone: 3/8" STD (per foot)	\$ 4.50				
	PFA Tubing - 1/2-inch ID	\$ 5.00				
	55-Gallon Drum	\$ 55.00				
	Temporary Sampling Port	\$ 25.00				
	Soil Gas Sampling Port	\$ 75.00				
Sub-Slab Cover (Stainless Steel)	\$ 40.00					
Well Cover 8X12"	\$ 105.00					
Measuring Wheel			\$ 15.00			
Camera			\$ 25.00			
1L Tedlar Bag	\$ 20.00					
Radon Sampling Kit	\$ 30.00					
HAZMAT Exemption Shipper	\$ 40.00					
Manometers	\$ 105.00					
Westlaw	\$ 105.00					
CAD/drafting/graphics	\$ 90.00					
Safety	Cones, Baracades & Traffic Signs			\$ 10.00		
	Gloves (Chemical Resistant)	\$ 10.00				
	Level "B": Level "C1" plus SCBA			\$ 210.00		
	Level "C1": Level "C2" plus Polycoat Suit			\$ 85.00		
	Level "C2": Level "D" plus Respirator			\$ 40.00		
	Standby SCBA			\$ 130.00		
Routine Field and Safety Equipment			\$ 130.00		\$ 130.00	
Production	1 Inch Binder	\$ 9.00				
	2 Inch Binder	\$ 12.00				
	3 Inch Binder	\$ 15.00				
	4 Inch Binder	\$ 22.00				
	Binder Tabs (Set of 8)	\$ 5.00				
	Color Copies	\$ 0.40	60			\$ 24.00
	B/W Copies	\$ 0.25				
	Document - Format/Sending	\$ 15.00	1			\$ 15.00
Report CD Copy	\$ 5.00					
						\$ 169.00
<b>PHASE TOTAL</b>						<b>\$ 2,414.00</b>



	Direct Costs - Chargeable Equipment Expense	Rate (hr/unit)	# Hrs/Units	Rate (day/use)	# days/use	Subtotal
Vehicles	Field Vehicle - Full Day	\$ 20.00		\$ 130.00		
	Mileage at Federal IRS Reimbursement Rate (used only for daily use over 230 miles)	\$ 0.560				
Meters	Air Velocity Meter (per use)			\$ 25.00		
	Multi-meter Conductivity/pH/Temp/TDS			\$ 165.00		
	Dissolved Oxygen Meter			\$ 40.00		
	FID Foxboro/Sensidyne (TIP)			\$ 155.00		
	Flow Calibrator			\$ 30.00		
	PID or 580 OVM			\$ 120.00		
	Turbidity Meter			\$ 30.00		
	ppb RAE			\$ 175.00		
Pumps	ORP Meter			\$ 30.00		
	Air Pump - Low Flow (Barcad)			\$ 25.00		
	Development Pump			\$ 130.00		
	Electric Submersible Pump with Control Box (Units)			\$ 130.00		
	Low-Flow Sampling Bladder	\$ 12.00				
	Peristaltic Pump			\$ 105.00		
	Pumping Test Accessory Equipment (Flow Meters/Manifold)	\$ 100.00				
	Portable SVE Unit - 1.5 HP			\$ 155.00		
Other	Intrinsically Safe Vapor Evacuation Blower			\$ 155.00		
	Pneumatic Low-Flow Sampling Kit w/ Flow Cell and Multimeter			\$ 270.00		
	Asbestos Sampling Kit			\$ 250.00		
	Asbestos Investigation Supplies			\$ 130.00		
	Asbestos Sampling Core	\$ 2.50				
	Bailers (Disposable)	\$ 10.00				
	Bailers (Non-Disposable)			\$ 15.00		
	Core Boxes	\$ 10.00				
	Core Sampler			\$ 55.00		
	Data Logger with Transducer			\$ 155.00		
	Well Caps	\$ 30.00				
	Elec. Well Sounder (Probe)			\$ 30.00		
	Metal Detector			\$ 50.00		
	5035 Sample Kit	\$ 16.00				
	Field Book	\$ 11.00				
	Filter - Large	\$ 18.00				
	Filter - Small	\$ 9.00				
	Generator			\$ 105.00		
	Hand Auger			\$ 30.00		
	Helium QA/QC Kit			\$ 265.00		
	Helium QA/QC Accessories	\$ 20.00				
	Oil/Water Interface Probe			\$ 105.00		
	Padlocks	\$ 15.00				
	Steam Cleaner			\$ 130.00		
	Transducer (ea)			\$ 40.00		
	Coring Machine			\$ 200.00		
	Rotary Hammer Drill			\$ 170.00		
	Hand Drill			\$ 75.00		
	Tubing (Bonded) - Polyethylene (Teflon): 1/4" OD X 3/8" O	\$ 1.50				
	Tubing (Bonded) - Polyethylene (Teflon): 1/4" OD X 1/4" O	\$ 1.20				
	Tubing (Bonded) - Polyethylene (Teflon): 1/16" OD X 1/4"	\$ 1.25				
	Tubing (Bonded) - Polyethylene: 1/4" OD X 3/8" OD (per f	\$ 1.10				
	Tubing - Polyethylene: 1/4" OD (per foot)	\$ 0.60				
	Tubing - Polyethylene: 1/2" OD (per foot)	\$ 0.85				
Tubing - Tygon: 3/8" STD (per foot)	\$ 4.45					
Tubing - Silicone: 3/8" STD (per foot)	\$ 4.50					
PFA Tubing - 1/2-inch ID	\$ 5.00					
55-Gallon Drum	\$ 55.00					
Temporary Sampling Port	\$ 25.00					
Soil Gas Sampling Port	\$ 75.00					
Sub-Slab Cover (Stainless Steel)	\$ 40.00					
Well Cover 8X12"	\$ 105.00					
Measuring Wheel			\$ 15.00			
Camera			\$ 25.00			
1L Tedlar Bag	\$ 20.00					
Radon Sampling Kit	\$ 30.00					
HAZMAT Exemption Shipper	\$ 40.00					
Manometers	\$ 105.00					
Westlaw	\$ 105.00					
CAD/drafting/graphics	\$ 90.00					
Safety	Cones, Baracades & Traffic Signs			\$ 10.00		
	Gloves (Chemical Resistant)	\$ 10.00				
	Level "B": Level "C1" plus SCBA			\$ 210.00		
	Level "C1": Level "C2" plus Polycoat Suit			\$ 85.00		
	Level "C2": Level "D" plus Respirator			\$ 40.00		
	Standby SCBA			\$ 130.00		
Production	Routine Field and Safety Equipment			\$ 130.00		
	1 Inch Binder	\$ 9.00				
	2 Inch Binder	\$ 12.00				
	3 Inch Binder	\$ 15.00				
	4 Inch Binder	\$ 22.00				
	Binder Tabs (Set of 8)	\$ 5.00				
	Color Copies	\$ 0.40	8			\$ 3.20
	B/W Copies	\$ 0.25				
	Document - Format/Sending	\$ 15.00				
	Report CD Copy	\$ 5.00				
						\$ 3.20
<b>PHASE TOTAL</b>						<b>\$ 1,563.20</b>

Site Name: Dutch Cleaners  
 BRRTS #: 02-60-271527  
 Type of Action: Site Investigation / Interim RA

TASKS	BUDGET																		Total Invoiced Costs
	Original Bid plus CO Approved Amount	Change Order Interim RA, Jan 2012	Change Order Addl SI 1/30/2014	Change Order Additional SI July 2017	Total Approved Budget	Previous Claims (If applicable)	Remaining	Pace, 1540006640, June 29, 2015	FG, June 30, 2015, 66484	Pace, 1540010863, Oct 2, 2015	Pace, 1540014616, Dec 24, 2015	Pace, 1640017512, Mar 23, 2016	Pace 1640021719, June 28, 2016	FG, July 31, 2016, 72108	Pace 1640025368, Sept 21, 2016	Pace 1640029870, Dec 27, 2016	FG, Dec 31, 2016, 74858	FG, April 24, 2017	
Bid / Budgeted Description																			
<b>Consultant and Contractor Costs</b>																			
<b>Initial Discovery by Arcadis</b>						\$ 10,099.92													
Task 1: Work Plan	\$ 530.00				\$ 530.00	\$ 470.00	\$ 60.00												
Task 2: Site Investigation: 5 NR 141 Wells, 1 Piezometer, 4 Geoprobe/Temp Wells plus 2B Indoor air and sump eval and 2C Addl 3 wells	\$ 8,652.00		\$ 2,825.00		\$ 11,477.00	\$ 11,816.75	\$ (339.75)												
Task 3: Quarterly Groundwater Monitoring With Geochem plus 3B Addl GW monitor	\$ 3,196.00		\$ 2,671.00		\$ 5,867.00	\$ 7,418.75	\$ (1,551.75)												
Task 4: Investigative Waste Disposal 6 Wells + 2 Addl Wells Plus 4B Addl Inv West Disposal from 3 wells	\$ 725.00		\$ -		\$ 725.00	\$ 432.50	\$ 292.50												
Task 5: Data Evaluation and Interpretation plus 5B Addl Data from Well Install, vapor, Sump eval, and quarterly samples	\$ 6,290.00		\$ 1,645.00		\$ 7,935.00	\$ 7,947.50	\$ (12.50)												
Task 6: Report Preparation (SI / RAO) plus 6B Addl SI Report	\$ 4,520.00		\$ 4,065.00		\$ 8,585.00	\$ 10,138.95	\$ (1,553.95)												
Task 7: Project Management (access to Main Street ROW, bidding, etc.) plus 7B Addl PM	\$ 2,790.00		\$ 1,280.00		\$ 4,070.00	\$ 4,031.25	\$ 38.75												
Task A: Sump Connection and Initial Quarter Monitoring / Report		\$ 1,743.60			\$ 1,743.60	\$ 1,736.75	\$ 6.85												
Task B: Quarterly Monitoring, Report, Treatment (one year - 4 events)		\$ 11,315.20			\$ 11,315.20	\$ 4,183.34	\$ 5,566.86	\$ 715.00					\$ 292.50			\$ 227.50	\$ 330.00	\$ 1,565.00	
Task C: Groundwater Sampling (14 wells plus sump)		\$ 1,626.00			\$ 1,626.00	\$ 1,606.75	\$ 19.25												
Task D: Data Evaluation and Interpretation		\$ 1,630.00			\$ 1,630.00	\$ 1,616.25	\$ 13.75												
Task E: Closure Report and GIS Preparation		\$ 5,710.00	\$ (5,710.00)		\$ -	\$ -	\$ -												
Task F: Well Abandonment 14 wells		\$ 1,655.00	\$ (1,655.00)		\$ -	\$ -	\$ -												
Phase 1a: Work Scope Development				\$ 3,320.00	\$ 3,320.00		\$ 3,320.00												
Phase 1b: Site Investigation Field Work				\$ 5,327.00	\$ 5,327.00		\$ 5,327.00												
Phase 1c: Data Evaluation and Reporting				\$ 2,414.00	\$ 2,414.00		\$ 2,414.00												
Phase 1d: Project Coordination & Management				\$ 1,563.00	\$ 1,563.00		\$ 1,563.00												
<b>Consultant Cost Total</b>	<b>\$ 26,703.00</b>	<b>\$ 23,679.80</b>	<b>\$ 5,121.00</b>	<b>\$ 12,624.00</b>	<b>\$ 68,127.80</b>	<b>\$ 51,398.79</b>	<b>\$ 15,164.01</b>	<b>\$ -</b>	<b>\$ 715.00</b>	<b>\$ -</b>	<b>\$ -</b>	<b>\$ -</b>	<b>\$ -</b>	<b>\$ 292.50</b>	<b>\$ -</b>	<b>\$ -</b>	<b>\$ 227.50</b>	<b>\$ 330.00</b>	<b>\$ 1,565.00</b>
<b>Sub-Contractor Costs</b>																			
Task 2: Site Investigation: 5 NR 141 Wells, 1 Piezometer, 4 Geoprobe/Temp Wells plus 2B Indoor air and sump eval and 2C Addl 3 wells	\$ 15,190.00		\$ 2,830.00		\$ 18,020.00	\$ 17,735.70	\$ 284.30												
Task 3: Quarterly Groundwater Monitoring With Geochem plus 3B Addl GW monitor	\$ 2,730.00		\$ 2,125.00		\$ 4,855.00	\$ 4,174.00	\$ 681.00												
Task 4: Investigative Waste Disposal 6 Wells + 2 Addl Wells Plus 4B Addl Inv West Disposal from 3 wells	\$ 1,415.00				\$ 1,415.00	\$ 1,037.25	\$ 377.75												
Task A: Sump Connection and Initial Quarter Monitoring / Report		\$ 65.00			\$ 65.00	\$ 50.00	\$ 15.00												
Task B: Quarterly Monitoring, Report, Treatment (one year - 4 events)		\$ 2,080.00			\$ 2,080.00	\$ 352.00	\$ 1,328.00	\$ 50.00	\$ 50.00	\$ 50.00	\$ 50.00	\$ 50.00	\$ 50.00	\$ 50.00	\$ 50.00		\$ 50.00	\$ 400.00	
Task C: Groundwater Sampling (14 wells plus sump)		\$ 1,610.00			\$ 1,610.00	\$ 785.00	\$ 825.00												
Phase 1b: Site Investigation Field Work				\$ 2,874.00	\$ 2,874.00		\$ 2,874.00												
<b>Sub-Contractor Cost Total</b>	<b>\$ 19,335.00</b>	<b>\$ 3,755.00</b>	<b>\$ 4,955.00</b>	<b>\$ 2,874.00</b>	<b>\$ 30,919.00</b>	<b>\$ 24,133.95</b>	<b>\$ 6,385.05</b>	<b>\$ 50.00</b>	<b>\$ -</b>	<b>\$ 50.00</b>	<b>\$ 50.00</b>	<b>\$ 50.00</b>	<b>\$ 50.00</b>	<b>\$ -</b>	<b>\$ 50.00</b>	<b>\$ 50.00</b>	<b>\$ -</b>	<b>\$ 50.00</b>	<b>\$ 400.00</b>
<b>DERF ELIGIBLE SUB-TOTALS</b>	<b>\$ 46,038.00</b>	<b>\$ 27,434.80</b>	<b>\$ 10,076.00</b>	<b>\$ 15,498.00</b>	<b>\$ 99,046.80</b>	<b>\$ 75,532.74</b>	<b>\$ 21,549.06</b>	<b>\$ 50.00</b>	<b>\$ 715.00</b>	<b>\$ 50.00</b>	<b>\$ 50.00</b>	<b>\$ 50.00</b>	<b>\$ 50.00</b>	<b>\$ 292.50</b>	<b>\$ 50.00</b>	<b>\$ 50.00</b>	<b>\$ 227.50</b>	<b>\$ 380.00</b>	<b>\$ 1,965.00</b>
<b>Non-DERF Eligible Expenses</b>																			
Excess Bill Rate by \$10 per hour																			\$ -
<b>Non-DERF Cost Total</b>																			\$ -
<b>INVOICE GRAND TOTAL</b>						<b>\$ 75,532.74</b>		<b>\$ 50.00</b>	<b>\$ 715.00</b>	<b>\$ 50.00</b>	<b>\$ 50.00</b>	<b>\$ 50.00</b>	<b>\$ 50.00</b>	<b>\$ 292.50</b>	<b>\$ 50.00</b>	<b>\$ 50.00</b>	<b>\$ 227.50</b>	<b>\$ 380.00</b>	<b>\$ 1,965.00</b>

Check Numbers

Site Name: Dutch Cleaners  
 BRRTS #: 02-60-271527  
 Type of Action: Site Investigation / Interim RA

Dry Cleaner Environmental Response Program  
 Reimbursement Cost Detail Linking Spreadsheet Form 4400-214D (R 08/12)

TASKS	BUDGET						DERF COST BREAKOUT (this claim)								Budget Remaining Use (-) to indicate cost over-run	% Task Complete, Remarks
	Original Bid plus CO Approved Amount	Change Order Interim RA, Jan 2012	Change Order Addl SI 1/30/2014	Change Order Additional SI July 2017	Total Approved Budget	Previous Claims (If applicable)	A Soil Invn	B Soil Remn	C GW Invn	D GW Remn	E Air/Vapor Invn	F Air/Vapor Remn	G Lab & Other Analysis	H Misc Costs		
<b>Consultant and Contractor Costs</b>																
<b>Initial Discovery by Arcadis</b>						\$ 10,099.92										
Task 1: Work Plan	\$ 530.00				\$ 530.00	\$ 470.00										\$ 60.00 100%
Task 2: Site Investigation: 5 NR 141 Wells, 1 Piezometer, 4 Geoprobe/Temp Wells plus 2B Indoor air and sump eval and 2C Addl 3 wells	\$ 8,652.00		\$ 2,825.00		\$ 11,477.00	\$ 11,816.75										\$ (339.75) 100%
Task 3: Quarterly Groundwater Monitoring With Geochem plus 3B Addl GW monitor	\$ 3,196.00		\$ 2,671.00		\$ 5,867.00	\$ 7,418.75										\$ (1,551.75) 100%
Task 4: Investigative Waste Disposal 6 Wells + 2 Addl Wells Plus 4B Addl Inv West Disposal from 3 wells	\$ 725.00		\$ -		\$ 725.00	\$ 432.50										\$ 292.50 100%
Task 5: Data Evaluation and Interpretation plus 5B Addl Data from Well Install, vapor, Sump eval, and quarterly samples	\$ 6,290.00		\$ 1,645.00		\$ 7,935.00	\$ 7,947.50										\$ (12.50) 100%
Task 6: Report Preparation (SI / RAO) plus 6B Addl SI Report	\$ 4,520.00		\$ 4,065.00		\$ 8,585.00	\$ 10,138.95										\$ (1,553.95) 100%
Task 7: Project Management (access to Main Street ROW, bidding, etc.) plus 7B Addl PM	\$ 2,790.00		\$ 1,280.00		\$ 4,070.00	\$ 4,031.25										\$ 38.75 100%
Task A: Sump Connection and Initial Quarter Monitoring / Report		\$ 1,743.60			\$ 1,743.60	\$ 1,736.75										\$ 6.85 100%
Task B: Quarterly Monitoring, Report, Treatment (one year - 4 events)		\$ 11,315.20			\$ 11,315.20	\$ 4,183.34				\$ 1,565.00						\$ 5,566.86 100%
Task C: Groundwater Sampling (14 wells plus sump)		\$ 1,626.00			\$ 1,626.00	\$ 1,606.75										\$ 19.25 100%
Task D: Data Evaluation and Interpretation		\$ 1,630.00			\$ 1,630.00	\$ 1,616.25										\$ 13.75 100%
Task E: Closure Report and GIS Preparation		\$ 5,710.00	\$ (5,710.00)		\$ -	\$ -										\$ - 0%
Task F: Well Abandonment 14 wells		\$ 1,655.00	\$ (1,655.00)		\$ -	\$ -										\$ - 0%
Phase 1a: Work Scope Development				\$ 3,320.00	\$ 3,320.00											
Phase 1b: Site Investigation Field Work				\$ 5,327.00	\$ 5,327.00											
Phase 1c: Data Evaluation and Reporting				\$ 2,414.00	\$ 2,414.00											
Phase 1d: Project Coordination & Management				\$ 1,563.00	\$ 1,563.00											
<b>Consultant Cost Total</b>	<b>\$ 26,703.00</b>	<b>\$ 23,679.80</b>	<b>\$ 5,121.00</b>	<b>\$ 12,624.00</b>	<b>\$ 68,127.80</b>	<b>\$ 51,398.79</b>										\$ - \$ 2,540.01
<b>Sub-Contractor Costs</b>																
Task 2: Site Investigation: 5 NR 141 Wells, 1 Piezometer, 4 Geoprobe/Temp Wells plus 2B Indoor air and sump eval and 2C Addl 3 wells	\$ 15,190.00		\$ 2,830.00		\$ 18,020.00	\$ 17,735.70										\$ 284.30 100%
Task 3: Quarterly Groundwater Monitoring With Geochem plus 3B Addl GW monitor	\$ 2,730.00		\$ 2,125.00		\$ 4,855.00	\$ 4,174.00										\$ 681.00 100%
Task 4: Investigative Waste Disposal 6 Wells + 2 Addl Wells Plus 4B Addl Inv West Disposal from 3 wells	\$ 1,415.00				\$ 1,415.00	\$ 1,037.25										\$ 377.75 100%
Task A: Sump Connection and Initial Quarter Monitoring / Report		\$ 65.00			\$ 65.00	\$ 50.00										\$ 15.00 100%
Task B: Quarterly Monitoring, Report, Treatment (one year - 4 events)		\$ 2,080.00			\$ 2,080.00	\$ 352.00							\$ 400.00			\$ 1,328.00 100%
Task C: Groundwater Sampling (14 wells plus sump)		\$ 1,610.00			\$ 1,610.00	\$ 785.00										\$ 825.00 50%
Phase 1b: Site Investigation Field Work				\$ 2,874.00	\$ 2,874.00											
<b>Sub-Contractor Cost Total</b>	<b>\$ 19,335.00</b>	<b>\$ 3,755.00</b>	<b>\$ 4,955.00</b>	<b>\$ 2,874.00</b>	<b>\$ 30,919.00</b>	<b>\$ 24,133.95</b>										\$ 3,511.05
<b>DERF ELIGIBLE SUB-TOTALS</b>	<b>\$ 46,038.00</b>	<b>\$ 27,434.80</b>	<b>\$ 10,076.00</b>	<b>\$ 15,498.00</b>	<b>\$ 99,046.80</b>	<b>\$ 75,532.74</b>	<b>\$ -</b>	<b>\$ -</b>	<b>\$ -</b>	<b>\$ 1,565.00</b>	<b>\$ -</b>	<b>\$ -</b>	<b>\$ 400.00</b>	<b>\$ -</b>	<b>\$ 6,051.06</b>	
<b>Non-DERF Eligible Expenses</b>																
Excess Bill Rate by \$10 per hour																
<b>Non-DERF Cost Total</b>																
<b>INVOICE GRAND TOTAL</b>						<b>\$ 75,532.74</b>										

Total DERF Eligible Costs This Claim \$ 1,965.00

Check Numbers