



Excellence through experience™

RECEIVED
12-10-14

709 Gillette St., Ste 3, La Crosse, WI 54603 ♦ 1-800-552-2932 ♦ Fax (608) 781-8893 Email: rona@metcohq.com ♦ www.metcohq.com

December 4, 2014

BRRTS #: 03-23-001503
PECFA #: 53522-9999-03-A

Will Myers
Wisconsin Department of Natural Resources
3911 Fish Hatchery Road
Fitchburg, WI, 53711

Subject: Browntown Oil Station – Annual Groundwater Monitoring Report

Dear Mr. Myers,

Enclosed is the Annual Groundwater Monitoring Report for the Browntown Oil Station site located in Browntown, Wisconsin. **This completes the four additional rounds of groundwater monitoring approved November 26, 2013.**

Groundwater Sampling

On January 14, 2014, METCO personnel collected groundwater samples from the six site monitoring wells (MW-1 through MW-6) for laboratory analysis (PVOC and Naphthalene). Water level, Dissolved Oxygen, pH, ORP, Temperature, and Specific Conductivity measurements were also collected from all site monitoring wells.

On April 17, 2014, METCO personnel collected groundwater samples from the six site monitoring wells (MW-1 through MW-6) for laboratory analysis (PVOC and Naphthalene). Water level, Dissolved Oxygen, pH, ORP, Temperature, and Specific Conductivity measurements were collected from all site monitoring wells during the sampling event.

On July 15, 2014, METCO personnel collected groundwater samples from the six site monitoring wells (MW-1 through MW-6) for laboratory analysis (PVOC, Naphthalene, and Lead (MW-2 only)). Water level, Dissolved Oxygen, pH, ORP, Temperature, and Specific Conductivity measurements were collected from all site monitoring wells during the sampling event.

On October 15, 2014, METCO personnel collected groundwater samples from the six site monitoring wells (MW-1 through MW-6) for laboratory analysis (PVOC, Naphthalene, and Lead (MW-2 only)). Water level, Dissolved Oxygen, pH, ORP, Temperature, and Specific Conductivity measurements were collected from all site monitoring wells during the sampling event.

Discussion of Results

Monitoring well MW-1 continues to show no NR140 ES or PAL exceedances.

Monitoring well MW-2 shows NR140 PAL exceedances for Benzene (0.72 ppb) and Naphthalene (12.2 ppb).

Monitoring well MW-3 continues to show no detects for any contaminants of concern.

Monitoring well MW-4 continues to show no detects for any contaminants of concern.

Monitoring well MW-5 shows no exceedances for the most recent round of groundwater sampling (October 2014), but did show a NR140 PAL exceedance for Benzene (1.28 ppb) during the July 2014 sampling round.

Monitoring well MW-6 continues to show no detects for any contaminants of concern.

Based on the on-site monitoring wells, the depth to groundwater has ranged from 0.82 to 7.03 feet bgs depending on well location and time of year. The local groundwater flow has been generally towards the east-northeast based on water level measurements collected during the six rounds of groundwater sampling.

Conclusion/Recommendations

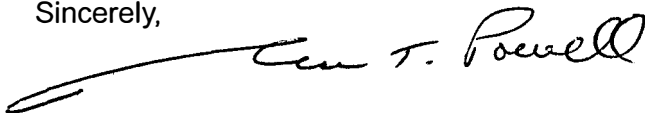
Based on the results of the current investigation, METCO recommends that the site be reviewed for the possibility of "closure" for the following reasons: 1) The groundwater contaminant plume has been defined to a reasonable extent. 2) Free product has never been encountered at this site. 3) There have been no ES exceedances in groundwater during the last four rounds of sampling. 4) The nearest municipal well lies 4,000 feet to the southeast of the source area. 5) Based on current results, it does not appear that this release is impacting Skinner Creek, which is located 120 feet to the east of the source area. If the state concurs, please contact METCO to discuss closure activities.

However, it should be noted that due to the changes in the NR720 Soil Standards, one NR720 Direct Contact exceedance exists at Geoprobe boring G-4-1 (12.5 ppm Naphthalene at 3.5 feet bgs) that will need to be addressed via soil excavation or cap maintenance plan (gravel/concrete).

A Detailed Site Map, Groundwater Contour Maps, Groundwater Contamination Map, Data Tables, and Laboratory Documents have been attached.

If you have any questions or comments please feel free to call (608-781-8879) or email at jasonp@metcohq.com.

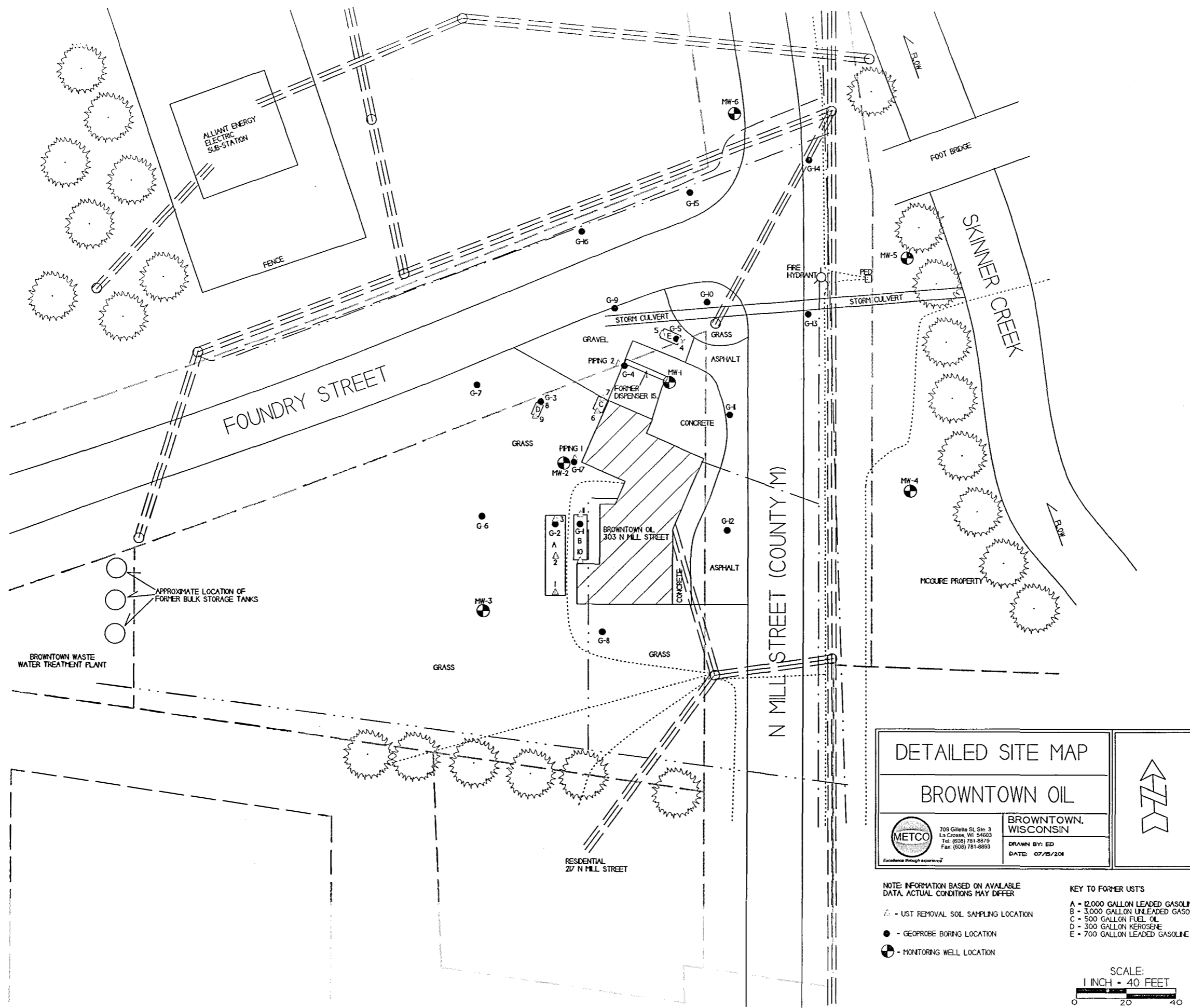
Sincerely,



Jason T. Powell
Staff Scientist

Attachments

c: Jon Sigafus – Client



ALLIANT ENERGY
ELECTRIC
SUB-STATION

FOUNDRY STREET

FOOT BRIDGE

SKINNER CREEK

N MILL STREET (COUNTY M)

BROWNTOWN OIL
303 N. MILL STREET

BROWNTOWN WASTE
WATER TREATMENT PLANT

APPROXIMATE LOCATION OF
FORMER BULK STORAGE TANKS

RESIDENTIAL
27' N MILL STREET

<h3>DETAILED SITE MAP</h3> <h3>BROWNTOWN OIL</h3>		
<p>709 Gillette St. Ste. 3 La Crosse, WI 54603 Tel: (608) 781-8879 Fax: (608) 781-8893 <small>Evidence through experience</small></p>	<p>BROWNTOWN, WISCONSIN</p> <p>DRAWN BY: ED DATE: 07/15/2014</p>	

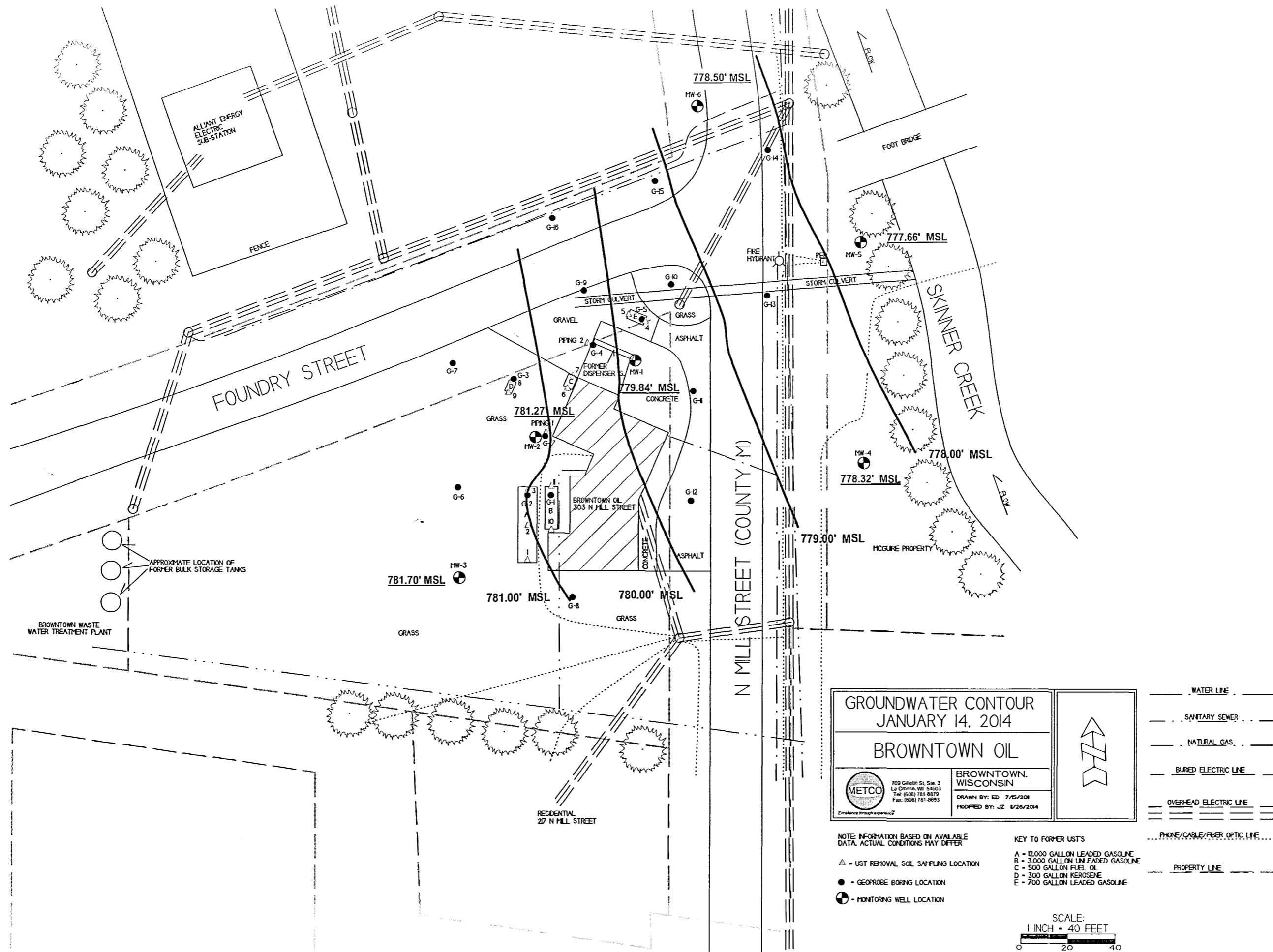
NOTE: INFORMATION BASED ON AVAILABLE DATA. ACTUAL CONDITIONS MAY DIFFER

- ▲ - UST REMOVAL SOIL SAMPLING LOCATION
- - GEOPROBE BORING LOCATION
- ⊙ - MONITORING WELL LOCATION

- KEY TO FORMER USTS
- A - 12,000 GALLON LEADED GASOLINE
 - B - 3,000 GALLON UNLEADED GASOLINE
 - C - 500 GALLON FUEL OIL
 - D - 300 GALLON KEROSENE
 - E - 700 GALLON LEADED GASOLINE

- WATER LINE —
- SANITARY SEWER —
- NATURAL GAS —
- BURIED ELECTRIC LINE —
- OVERHEAD ELECTRIC LINE —
- PHONE/CABLE/FIBER OPTIC LINE —
- PROPERTY LINE —

SCALE:
1 INCH = 40 FEET



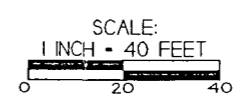
GROUNDWATER CONTOUR JANUARY 14, 2014	
BROWNTOWN OIL	
709 Gillette St. Ste. 3 L3 Cross St. WI 54603 Tel: (608) 781-8879 Fax: (608) 781-8893 <small>Excellence through experience</small>	BROWNTOWN, WISCONSIN DRAWN BY: ED 7/5/2011 MODIFIED BY: JZ 1/26/2014

NOTE: INFORMATION BASED ON AVAILABLE DATA. ACTUAL CONDITIONS MAY DIFFER

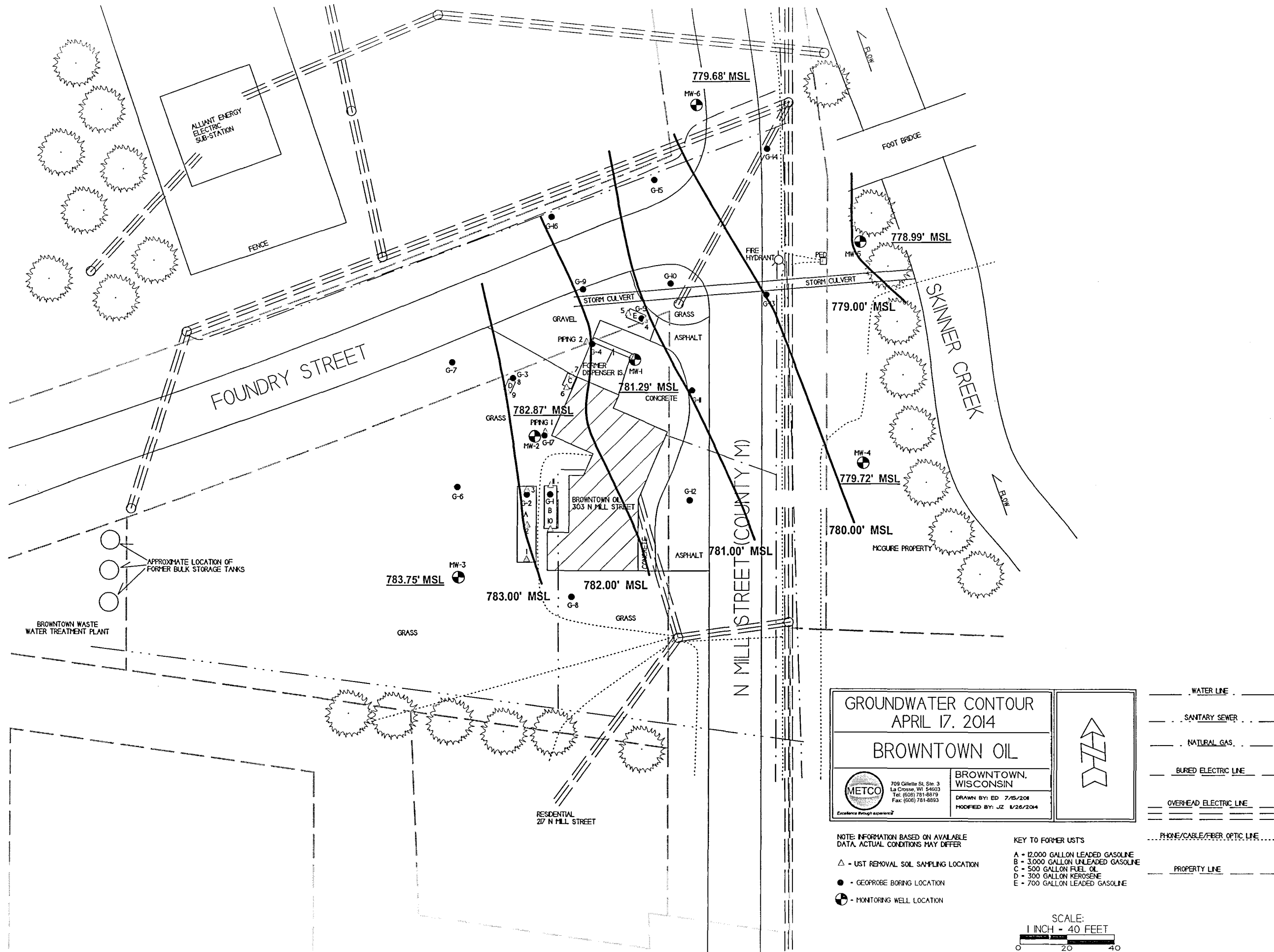
- ▲ - UST REMOVAL SOIL SAMPLING LOCATION
- - GEOPROBE BORING LOCATION
- ⊕ - MONITORING WELL LOCATION

KEY TO FORMER USTS

- A - 12,000 GALLON LEADED GASOLINE
- B - 3,000 GALLON UNLEADED GASOLINE
- C - 500 GALLON FUEL OIL
- D - 300 GALLON KEROSENE
- E - 700 GALLON LEADED GASOLINE



- WATER LINE —
- SANITARY SEWER ---
- NATURAL GAS ---
- BURIED ELECTRIC LINE ---
- OVERHEAD ELECTRIC LINE ---
- PHONE/CABLE/FIBER OPTIC LINE ---
- PROPERTY LINE ---



ALLIANT ENERGY
ELECTRIC
SUB-STATION

FOUNDRY STREET

FOOT BRIDGE

SKINNER CREEK

N MILL STREET (COUNTY M)

BROWNTOWN WASTE
WATER TREATMENT PLANT

APPROXIMATE LOCATION OF
FORMER BULK STORAGE TANKS

BROWNTOWN OIL
303 N MILL STREET

RESIDENTIAL
27' N MILL STREET

GROUNDWATER CONTOUR APRIL 17, 2014	
BROWNTOWN OIL	
<p>709 Gillette St. Ste. 3 La Crosse, WI 54603 Tel: (608) 781-8879 Fax: (608) 781-8893 <i>Excellence through experience</i></p>	<p>BROWNTOWN, WISCONSIN</p> <p>DRAWN BY: ED 7/15/2014 MODIFIED BY: JZ 1/26/2014</p>

NOTE: INFORMATION BASED ON AVAILABLE
DATA. ACTUAL CONDITIONS MAY DIFFER

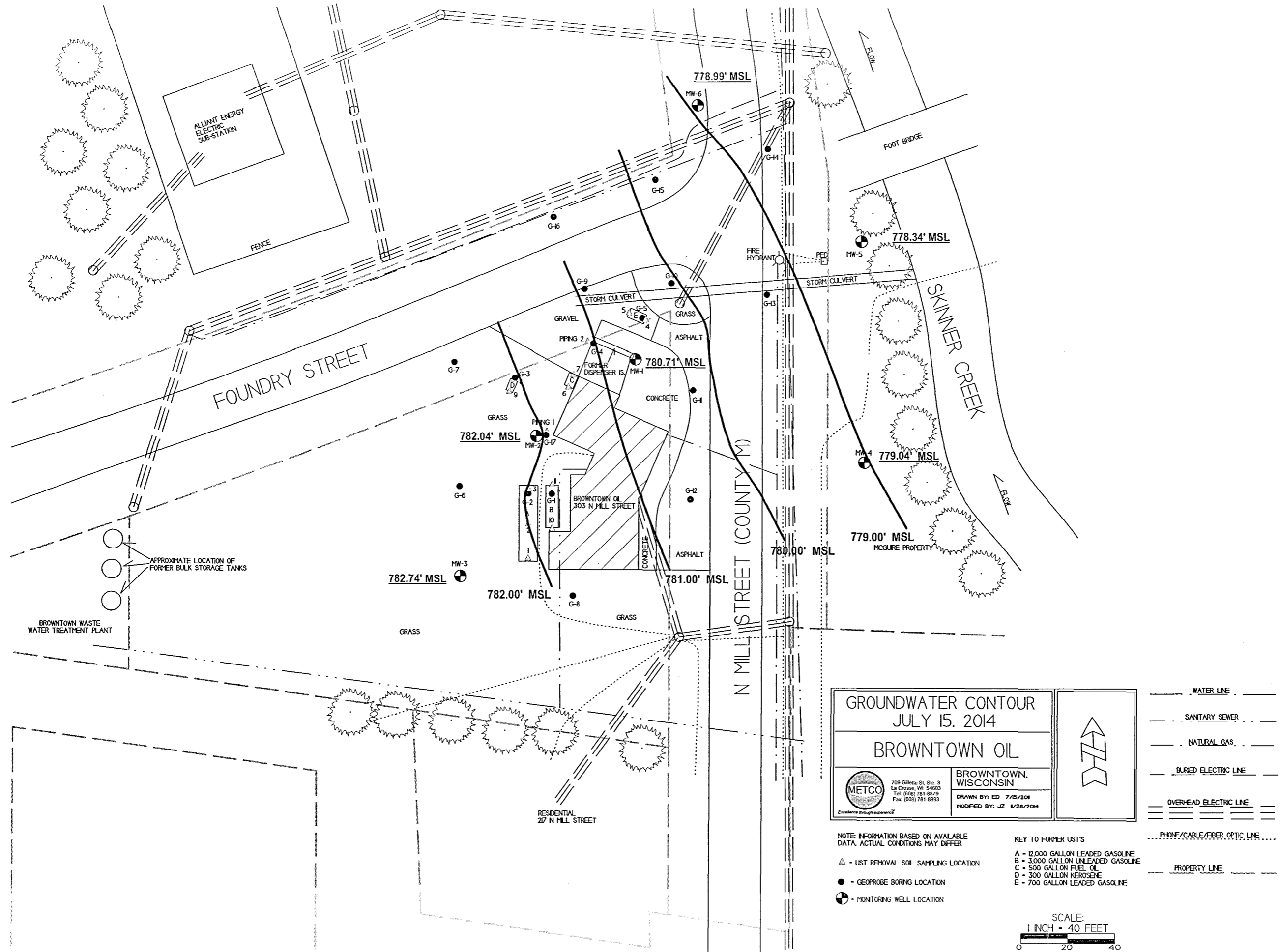
- △ - UST REMOVAL SOIL SAMPLING LOCATION
- - GEOPROBE BORING LOCATION
- ⊕ - MONITORING WELL LOCATION

KEY TO FORMER USTs

- A - 12,000 GALLON LEADED GASOLINE
- B - 3,000 GALLON UNLEADED GASOLINE
- C - 500 GALLON FUEL OIL
- D - 300 GALLON KEROSENE
- E - 700 GALLON LEADED GASOLINE


SCALE:
1 INCH = 40 FEET

- WATER LINE —
- - - - - SANITARY SEWER - - - - -
- NATURAL GAS —
- BURIED ELECTRIC LINE —
- OVERHEAD ELECTRIC LINE —
- PHONE/CABLE/FIBER OPTIC LINE —
- PROPERTY LINE —



GROUNDWATER CONTOUR
JULY 15, 2014

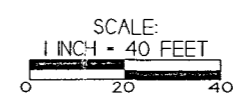
BROWNTOWN OIL

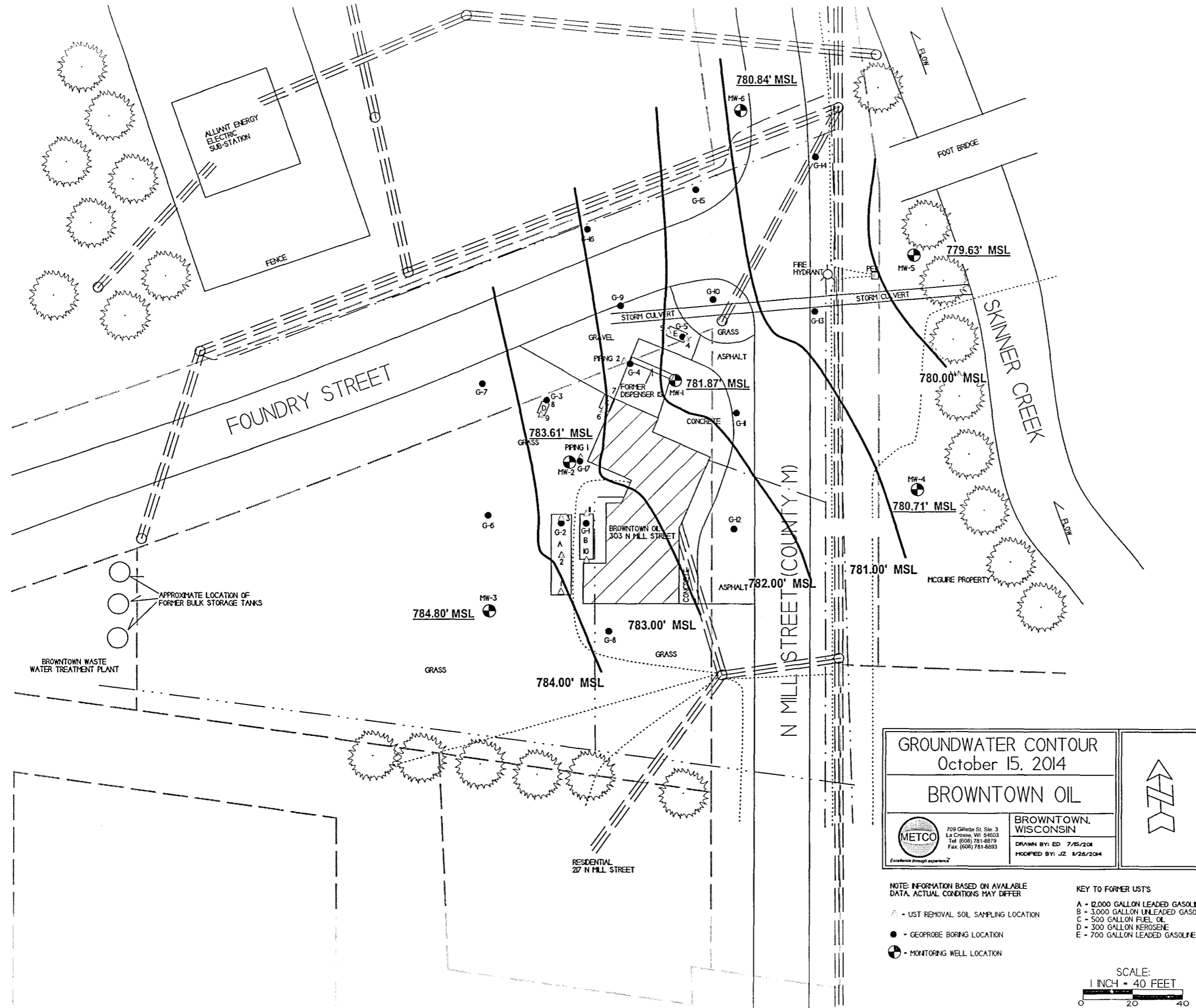
 <small>709 Gillette St. Ste. 3 La Crosse, WI 54603 Tel: (608) 781-8879 Fax: (608) 781-8893 <i>Excellence through experience</i></small>	BROWNTOWN, WISCONSIN
	<small>DRAWN BY: ED 7/15/2014 MODIFIED BY: JZ 1/26/2014</small>

- NOTE: INFORMATION BASED ON AVAILABLE DATA. ACTUAL CONDITIONS MAY DIFFER
- ▲ - UST REMOVAL SOIL SAMPLING LOCATION
 - - GEOPROBE BORING LOCATION
 - ⊕ - MONITORING WELL LOCATION

- KEY TO FORMER UST'S
- A - 12,000 GALLON LEADED GASOLINE
 - B - 3,000 GALLON UNLEADED GASOLINE
 - C - 500 GALLON FUEL OIL
 - D - 300 GALLON KEROSENE
 - E - 700 GALLON LEADED GASOLINE

- WATER LINE —
- SANITARY SEWER —
- NATURAL GAS —
- BURIED ELECTRIC LINE —
- OVERHEAD ELECTRIC LINE —
- PHONE/CABLE/FIBER OPTIC LINE —
- PROPERTY LINE —

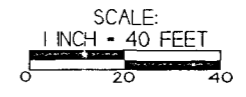


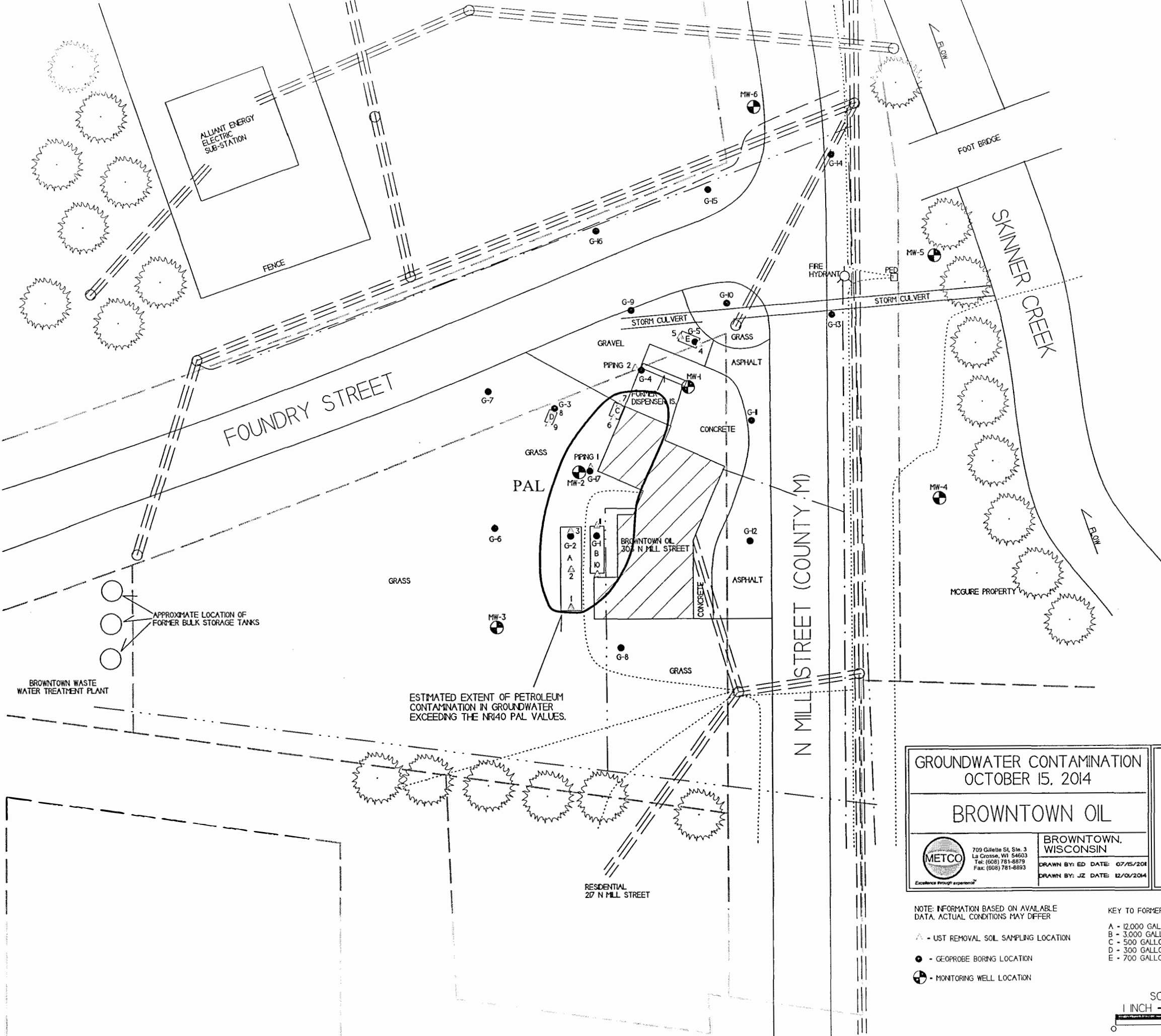


GROUNDWATER CONTOUR October 15, 2014	
BROWNTOWN OIL	
	BROWNTOWN WISCONSIN <small>709 Collette St. Ste. 3 La Crosse, WI 54603 Tel: (608) 781-8879 Fax: (608) 781-8893</small>
<small>Existence through experience</small>	<small>DRAWN BY: ED 7/15/2014 MODIFIED BY: JZ 1/26/2014</small>

- NOTE: INFORMATION BASED ON AVAILABLE DATA. ACTUAL CONDITIONS MAY DIFFER
- ▲ - UST REMOVAL SOIL SAMPLING LOCATION
 - - GEOPROBE BORING LOCATION
 - ⊙ - MONITORING WELL LOCATION
- KEY TO FORMER USTS
- A - 12,000 GALLON LEADED GASOLINE
 - B - 3,000 GALLON UNLEADED GASOLINE
 - C - 500 GALLON FUEL OIL
 - D - 300 GALLON KEROSENE
 - E - 700 GALLON LEADED GASOLINE

- WATER LINE —
- - - SANITARY SEWER - - -
- NATURAL GAS —
- BURIED ELECTRIC LINE —
- OVERHEAD ELECTRIC LINE —
- ... PHONE/CABLE/FIBER OPTIC LINE ...
- PROPERTY LINE —





ALLIANT ENERGY
ELECTRIC
SUB-STATION

FOUNDRY STREET

FOOT BRIDGE

SKINNER CREEK

N MILL STREET (COUNTY M)

RESIDENTIAL
217 N MILL STREET

ESTIMATED EXTENT OF PETROLEUM
CONTAMINATION IN GROUNDWATER
EXCEEDING THE NR140 PAL VALUES.

APPROXIMATE LOCATION OF
FORMER BULK STORAGE TANKS

BROWNTOWN WASTE
WATER TREATMENT PLANT

GROUNDWATER CONTAMINATION
OCTOBER 15, 2014

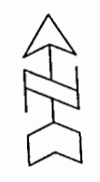
BROWNTOWN OIL



709 Gillette St, Ste. 3
La Crosse, WI 54603
Tel: (608) 781-8879
Fax: (608) 781-8893

BROWNTOWN,
WISCONSIN

DRAWN BY: ED DATE: 07/15/2014
DRAWN BY: JZ DATE: 12/01/2014



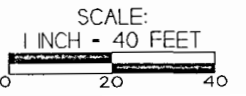
NOTE: INFORMATION BASED ON AVAILABLE
DATA. ACTUAL CONDITIONS MAY DIFFER

- ▲ - UST REMOVAL SOIL SAMPLING LOCATION
- - GEOPROBE BORING LOCATION
- ⊙ - MONITORING WELL LOCATION

- KEY TO FORMER USTS
- A - 12,000 GALLON LEADED GASOLINE
 - B - 3,000 GALLON UNLEADED GASOLINE
 - C - 500 GALLON FUEL OIL
 - D - 300 GALLON KEROSENE
 - E - 700 GALLON LEADED GASOLINE

- WATER LINE
- SANITARY SEWER
- NATURAL GAS
- BURIED ELECTRIC LINE
- OVERHEAD ELECTRIC LINE
- PHONE/CABLE/FIBER OPTIC LINE

PROPERTY LINE



A.1 Groundwater Analytical Table
 Browntown Oil BRRTS# 03-23-001503

Well MW-1

PVC Elevation = 784.49 (feet) (MSL)

Date	Water Elevation (in feet msl)	Depth to Water (in feet)	Lead (ppb)	Benzene (ppb)	Ethyl Benzene (ppb)	MTBE (ppb)	Naphthalene (ppb)	Toluene (ppb)	Trimethyl-benzenes (ppb)	Xylene (Total) (ppb)
09/26/12	778.99	5.50	<0.7	<0.74	16.7	<0.8	17.6	17	124.6	129
03/20/13	781.12	3.37	<0.7	3.2	17.5	<0.37	18.4	17.3	116.4	<2.41
01/14/14	779.84	4.65	NS	<0.27	<0.82	<0.37	<1.2	<0.8	<1.69	<2.41
04/17/14	781.29	3.20	NS	<0.27	<0.82	<0.37	<1.2	<0.8	1.29-2.15	<2.41
07/15/14	780.71	3.78	NS	<0.27	<0.82	<0.37	<1.2	<0.8	<1.69	<2.41
10/15/14	781.87	2.62	NS	<0.27	<0.82	<0.37	<1.2	<0.8	<1.69	<2.41
ENFORCEMENT STANDARD ES = Bold			15	5	700	60	100	800	480	2000
PREVENTIVE ACTION LIMIT PAL = Italics			1.5	0.5	140	12	10	160	96	400

(ppb) = parts per billion (ppm) = parts per million

ns = not sampled nm = not measured

Note: Elevations are presented in feet mean sea level (msl).

Well MW-2

PVC Elevation = 784.44 (feet) (MSL)

Date	Water Elevation (in feet msl)	Depth to Water (in feet)	Lead (ppb)	Benzene (ppb)	Ethyl Benzene (ppb)	MTBE (ppb)	Naphthalene (ppb)	Toluene (ppb)	Trimethyl-benzenes (ppb)	Xylene (Total) (ppb)
09/26/12	779.82	4.62	<0.7	1.16	33	<0.8	16.1	3.6	176	63.4
03/20/13	782.63	1.81	20.8	1.52	1.79	<0.37	141	<0.8	60.3	56
01/14/14	781.27	3.17	NS	1.14	<0.82	<0.37	3.3	<0.8	31.6	24.5
04/17/14	782.87	1.57	NS	0.84	0.97	<0.37	2.98	<0.8	29.4	16.8
07/15/14	782.04	2.40	<0.7	1.88	<0.82	<0.37	<1.2	<0.8	<1.69	<2.41
10/15/14	783.61	0.83	<0.7	0.72	3.5	<0.37	12.2	<0.8	90.9	65.1
ENFORCEMENT STANDARD ES = Bold			15	5	700	60	100	800	480	2000
PREVENTIVE ACTION LIMIT PAL = Italics			1.5	0.5	140	12	10	160	96	400

(ppb) = parts per billion (ppm) = parts per million

ns = not sampled nm = not measured

Note: Elevations are presented in feet mean sea level (msl).

Well MW-3

PVC Elevation = 785.62 (feet) (MSL)

Date	Water Elevation (in feet msl)	Depth to Water (in feet)	Lead (ppb)	Benzene (ppb)	Ethyl Benzene (ppb)	MTBE (ppb)	Naphthalene (ppb)	Toluene (ppb)	Trimethyl-benzenes (ppb)	Xylene (Total) (ppb)
09/26/12	780.21	5.41	<0.7	<0.5	<0.78	<0.8	<2.1	<0.53	<1.54	<1.9
03/20/13	783.14	2.48	<0.7	<0.27	<0.82	<0.37	<1.2	<0.8	<1.69	<2.41
01/14/14	781.70	3.92	NS	<0.27	<0.82	<0.37	<1.2	<0.8	<1.69	<2.41
04/17/14	783.75	1.87	NS	<0.27	<0.82	<0.37	<1.2	<0.8	<1.69	<2.41
07/15/14	782.74	2.88	NS	<0.27	<0.82	<0.37	<1.2	<0.8	<1.69	<2.41
10/15/14	784.80	0.82	NS	<0.27	<0.82	<0.37	<1.2	<0.8	<1.69	<2.41
ENFORCEMENT STANDARD ES = Bold			15	5	700	60	100	800	480	2000
PREVENTIVE ACTION LIMIT PAL = Italics			1.5	0.5	140	12	10	160	96	400

(ppb) = parts per billion (ppm) = parts per million

ns = not sampled nm = not measured

Note: Elevations are presented in feet mean sea level (msl).

A.1 Groundwater Analytical Table
Browntown Oil BRRS# 03-23-001503

Well MW-4

PVC Elevation = 784.70 (feet) (MSL)

Date	Water Elevation (in feet msl)	Depth to Water (in feet)	Lead (ppb)	Benzene (ppb)	Ethyl Benzene (ppb)	MTBE (ppb)	Naphthalene (ppb)	Toluene (ppb)	Trimethylbenzenes (ppb)	Xylene (Total) (ppb)
09/26/12	777.67	7.03	<0.7	<0.5	<0.78	<0.8	<2.1	<0.53	<1.54	<1.9
03/20/13	779.28	5.42	<0.7	<0.27	<0.82	<0.37	<1.2	<0.8	<1.69	<2.41
01/14/14	778.32	6.38	NS	<0.27	<0.82	<0.37	<1.2	<0.8	<1.69	<2.41
04/17/14	779.72	4.98	NS	<0.27	<0.82	<0.37	<1.2	<0.8	<1.69	<2.41
07/15/14	779.04	5.66	NS	<0.27	<0.82	<0.37	<1.2	<0.8	<1.69	<2.41
10/15/14	780.71	3.99	NS	<0.24	<0.55	<0.23	<1.7	<0.69	<3.6	<1.32
ENFORCEMENT STANDARD ES = Bold			15	5	700	60	100	800	480	2000
PREVENTIVE ACTION LIMIT PAL = Italics			1.5	0.5	140	12	10	160	96	400

(ppb) = parts per billion (ppm) = parts per million

ns = not sampled nm = not measured

Note: Elevations are presented in feet mean sea level (msl).

Well MW-5

PVC Elevation = 783.61 (feet) (MSL)

Date	Water Elevation (in feet msl)	Depth to Water (in feet)	Lead (ppb)	Benzene (ppb)	Ethyl Benzene (ppb)	MTBE (ppb)	Naphthalene (ppb)	Toluene (ppb)	Trimethylbenzenes (ppb)	Xylene (Total) (ppb)
09/26/12	776.99	6.62	<0.7	<0.5	2.06	<0.8	<2.1	<0.53	18.74	5.66
03/20/13	778.74	4.87	<0.7	<0.27	<0.82	<0.37	<1.2	<0.8	1.63-2.49	<2.41
01/14/14	777.66	5.95	NS	<0.27	<0.82	<0.37	<1.2	<0.8	<1.69	<2.41
04/17/14	778.99	4.62	NS	<0.27	<0.82	<0.37	<1.2	<0.8	<1.69	<2.41
07/15/14	778.34	5.27	NS	1.28	7.7	<0.37	1.78	2.74	39-39.86	12.2
10/15/14	779.63	3.98	NS	<0.27	<0.82	<0.37	<1.2	<0.8	<1.69	<2.41
ENFORCEMENT STANDARD ES = Bold			15	5	700	60	100	800	480	2000
PREVENTIVE ACTION LIMIT PAL = Italics			1.5	0.5	140	12	10	160	96	400

(ppb) = parts per billion (ppm) = parts per million

ns = not sampled nm = not measured

Note: Elevations are presented in feet mean sea level (msl).

Well MW-6

PVC Elevation = 783.92 (feet) (MSL)

Date	Water Elevation (in feet msl)	Depth to Water (in feet)	Lead (ppb)	Benzene (ppb)	Ethyl Benzene (ppb)	MTBE (ppb)	Naphthalene (ppb)	Toluene (ppb)	Trimethylbenzenes (ppb)	Xylene (Total) (ppb)
09/26/12	777.57	6.35	<0.7	<0.5	<0.78	<0.8	<2.1	<0.53	<1.54	<1.9
03/20/13	779.53	4.39	<0.7	<0.27	<0.82	<0.37	<1.2	<0.8	<1.69	<2.41
01/14/14	778.50	5.42	NS	<0.27	<0.82	<0.37	<1.2	<0.8	<1.69	<2.41
04/17/14	779.68	4.24	NS	<0.27	<0.82	<0.37	<1.2	<0.8	<1.69	<2.41
07/15/14	778.99	4.93	NS	<0.27	<0.82	<0.37	<1.2	<0.8	<1.69	<2.41
10/15/14	780.84	3.08	NS	<0.24	<0.55	<0.23	<1.7	<0.69	<3.6	<1.32
ENFORCEMENT STANDARD ES = Bold			15	5	700	60	100	800	480	2000
PREVENTIVE ACTION LIMIT PAL = Italics			1.5	0.5	140	12	10	160	96	400

(ppb) = parts per billion (ppm) = parts per million

ns = not sampled nm = not measured

Note: Elevations are presented in feet mean sea level (msl).

A.8 Other
Groundwater NA Indicator Results
Browntown Oil BRRTS# 03-23-001503

Monitoring Well MW-1

Date	Dissolved Oxygen (ppm)	pH	ORP	Temp (C)	Specific Conductance	Nitrate + Nitrite (ppm)	Total Sulfate (ppm)	Dissolved Iron (ppm)	Manganese (ppm)
09/26/12	2.35	7.11	146.00	18.90	1684.00	3.12	24.8	<60	310
03/20/13	2.49	6.53	117.00	2.80	1298.00	NS	NS	NS	NS
01/14/14	3.13	6.61	109.00	6.90	819.00	NS	NS	NS	NS
04/17/14	3.11	6.68	300.00	3.80	1731.00	NS	NS	NS	NS
07/15/14	2.17	6.87	247.00	17.60	1551.00	NS	NS	NS	NS
10/15/14	2.16	6.17	262.00	14.40	917.00	NS	NS	NS	NS
ENFORCEMENT STANDARD = ES - Bold						10	-	-	300
PREVENTIVE ACTION LIMIT = PAL - Italics						2	-	-	60

(ppb) = parts per billion (ppm) = parts per million
 ns = not sampled nm = not measured
 Note: Elevations are presented in feet mean sea level (msl).

Monitoring Well MW-2

Date	Dissolved Oxygen (ppm)	pH	ORP	Temp (C)	Specific Conductance	Nitrate + Nitrite (ppm)	Total Sulfate (ppm)	Dissolved Iron (ppm)	Manganese (ppm)
09/26/12	0.98	7.17	9.00	19.30	1107.00	0.18	30.2	3020	840
03/20/13	1.71	6.50	156.00	2.80	448.50	NS	NS	NS	NS
01/14/14	3.69	6.95	79.00	5.50	713.00	NS	NS	NS	NS
04/17/14	1.68	7.05	227.00	5.80	550.00	NS	NS	NS	NS
07/15/14	0.89	7.04	3.00	18.30	621.00	NS	NS	NS	NS
10/15/14	2.10	5.86	246.00	13.30	347.00	NS	NS	NS	NS
ENFORCEMENT STANDARD = ES - Bold						10	-	-	300
PREVENTIVE ACTION LIMIT = PAL - Italics						2	-	-	60

(ppb) = parts per billion (ppm) = parts per million
 ns = not sampled nm = not measured
 Note: Elevations are presented in feet mean sea level (msl).

Monitoring Well MW-3

Date	Dissolved Oxygen (ppm)	pH	ORP	Temp (C)	Specific Conductance	Nitrate + Nitrite (ppm)	Total Sulfate (ppm)	Dissolved Iron (ppm)	Manganese (ppm)
09/26/12	2.44	6.55	279.00	16.60	1528.00	1.74	36.8	360	176
03/20/13	5.61	6.55	147.00	2.08	708.00	NS	NS	NS	NS
01/14/14	4.13	7.10	241.00	5.50	981.00	NS	NS	NS	NS
04/17/14	4.48	7.41	216.00	7.00	403.00	NS	NS	NS	NS
07/15/14	1.30	6.98	277.00	19.10	508.00	NS	NS	NS	NS
10/15/14	3.95	6.46	279.00	13.00	514.00	NS	NS	NS	NS
ENFORCEMENT STANDARD = ES - Bold						10	-	-	300
PREVENTIVE ACTION LIMIT = PAL - Italics						2	-	-	60

(ppb) = parts per billion (ppm) = parts per million
 ns = not sampled nm = not measured
 Note: Elevations are presented in feet mean sea level (msl).

A.8 Other
 Groundwater NA Indicator Results
 Browntown Oil BRRTS# 03-23-001503

Monitoring Well MW-4

Date	Dissolved Oxygen (ppm)	pH	ORP	Temp (C)	Specific Conductance	Nitrate + Nitrite (ppm)	Total Sulfate (ppm)	Dissolved Iron (ppm)	Manganese (ppm)
09/26/12	0.22	7.17	170.00	16.60	3156.00	2.42	50.1	<60	248
03/20/13	0.71	6.81	108.00	5.90	2497.00	NS	NS	NS	NS
01/14/14	1.61	6.72	209.00	7.40	2610.00	NS	NS	NS	NS
04/17/14	1.64	6.79	106.00	6.90	2027.00	NS	NS	NS	NS
07/15/14	1.40	6.73	259.00	17.60	2295.00	NS	NS	NS	NS
10/15/14	3.95	6.12	312.00	13.80	1227.00	NS	NS	NS	NS
ENFORCE MENT STANDARD = ES – Bold						10	-	-	300
PREVENTIVE ACTION LIMIT = PAL - Italics						2	-	-	60

(ppb) = parts per billion (ppm) = parts per million
 ns = not sampled nm = not measured
 Note: Elevations are presented in feet mean sea level (msl).

Well MW-5

Date	Dissolved Oxygen (ppm)	pH	ORP	Temp (C)	Specific Conductance	Nitrate + Nitrite (ppm)	Total Sulfate (ppm)	Dissolved Iron (ppm)	Manganese (ppm)
09/26/12	1.90	6.41	161.00	17.00	2326.00	<0.1	17.6	650	<0.7
03/20/13	1.53	6.58	139.00	4.20	3006.00	NS	NS	NS	NS
01/14/14	3.85	6.87	180.00	4.70	2811.00	NS	NS	NS	NS
04/17/14	2.02	7.19	69.00	5.70	2836.00	NS	NS	NS	NS
07/15/14	1.09	6.42	-1.00	16.50	4084.00	NS	NS	NS	NS
10/15/14	1.62	6.32	39.00	13.60	2161.00	NS	NS	NS	NS
ENFORCE MENT STANDARD = ES – Bold						10	-	-	300
PREVENTIVE ACTION LIMIT = PAL - Italics						2	-	-	60

(ppb) = parts per billion (ppm) = parts per million
 ns = not sampled nm = not measured
 Note: Elevations are presented in feet mean sea level (msl).

Monitoring Well MW-6

Date	Dissolved Oxygen (ppm)	pH	ORP	Temp (C)	Specific Conductance	Nitrate + Nitrite (ppm)	Total Sulfate (ppm)	Dissolved Iron (ppm)	Manganese (ppm)
09/26/12	0.12	7.15	226.00	18.20	1032.00	0.99	44.5	<60	526
03/20/13	5.84	6.78	325.00	3.90	1182.00	NS	NS	NS	NS
01/14/14	2.49	6.26	238.00	5.80	1130.00	NS	NS	NS	NS
04/17/14	7.60	6.58	223.00	7.00	609.00	NS	NS	NS	NS
07/15/14	1.51	6.58	276.00	19.50	473.00	NS	NS	NS	NS
10/15/14	3.36	7.88	292.00	14.10	396.00	NS	NS	NS	NS
ENFORCE MENT STANDARD = ES – Bold						10	-	-	300
PREVENTIVE ACTION LIMIT = PAL - Italics						2	-	-	60

(ppb) = parts per billion (ppm) = parts per million
 ns = not sampled nm = not measured
 Note: Elevations are presented in feet mean sea level (msl).

A.7 Water Level Elevations
Browntown Oil BRRTS# 03-23-001503
Browntown, Wisconsin

<i>pvc top (ft)</i>	MW-1	MW-2	MW-3	MW-4	MW-5	MW-6
	784.49	784.44	785.62	784.70	783.61	783.92

<i>Date</i>						
09/26/12	778.99	779.82	780.21	777.67	776.99	777.57
03/20/13	781.12	782.63	783.14	779.28	778.74	779.53
01/14/14	779.84	781.27	781.70	778.32	777.66	778.50
04/17/14	781.29	782.87	783.75	779.72	778.99	779.68
07/15/14	780.71	782.04	782.74	779.04	778.34	778.99
10/15/14	781.87	783.61	784.80	780.71	779.63	780.84

Note: Elevations are presented in feet mean sea level (msl).

CNL = Could Not Locate

NI = Not Installed

NM = Not Measured

Synergy Environmental Lab,

1990 Prospect Ct., Appleton, WI 54914 *P 920-830-2455 * F 920-733-0631

JOHN SIGAFUS
JOHN SIGAFUS
PO BOX 187
BROWNTOWN, WI 53522

Report Date 24-Jan-14

Project Name BROWNTOWN OIL - BROWNTOWN
Project #

Invoice # E26416

Lab Code 5026416A
Sample ID MW-6
Sample Matrix water
Sample Date 1/14/2014

	Result	Unit	LOD	LOQ	Dil	Method	Ext Date	Run Date	Analyst	Code
Organic										
PVOC + Naphthalene										
Benzene	< 0.27	ug/l	0.27	0.85	1	GRO95/8021		1/20/2014	CJR	1
Ethylbenzene	< 0.82	ug/l	0.82	2.6	1	GRO95/8021		1/20/2014	CJR	1
Methyl tert-butyl ether (MTBE)	< 0.37	ug/l	0.37	1.2	1	GRO95/8021		1/20/2014	CJR	1
Naphthalene	< 1.2	ug/l	1.2	3.8	1	GRO95/8021		1/20/2014	CJR	1
Toluene	< 0.8	ug/l	0.8	2.6	1	GRO95/8021		1/20/2014	CJR	1
1,2,4-Trimethylbenzene	< 0.83	ug/l	0.83	2.6	1	GRO95/8021		1/20/2014	CJR	1
1,3,5-Trimethylbenzene	< 0.86	ug/l	0.86	2.7	1	GRO95/8021		1/20/2014	CJR	1
m&p-Xylene	< 1.6	ug/l	1.6	5.2	1	GRO95/8021		1/20/2014	CJR	1
o-Xylene	< 0.81	ug/l	0.81	2.6	1	GRO95/8021		1/20/2014	CJR	1

Lab Code 5026416B
Sample ID MW-4
Sample Matrix water
Sample Date 1/14/2014

	Result	Unit	LOD	LOQ	Dil	Method	Ext Date	Run Date	Analyst	Code
Organic										
PVOC + Naphthalene										
Benzene	< 0.27	ug/l	0.27	0.85	1	GRO95/8021		1/20/2014	CJR	1
Ethylbenzene	< 0.82	ug/l	0.82	2.6	1	GRO95/8021		1/20/2014	CJR	1
Methyl tert-butyl ether (MTBE)	< 0.37	ug/l	0.37	1.2	1	GRO95/8021		1/20/2014	CJR	1
Naphthalene	< 1.2	ug/l	1.2	3.8	1	GRO95/8021		1/20/2014	CJR	1
Toluene	< 0.8	ug/l	0.8	2.6	1	GRO95/8021		1/20/2014	CJR	1
1,2,4-Trimethylbenzene	< 0.83	ug/l	0.83	2.6	1	GRO95/8021		1/20/2014	CJR	1
1,3,5-Trimethylbenzene	< 0.86	ug/l	0.86	2.7	1	GRO95/8021		1/20/2014	CJR	1
m&p-Xylene	< 1.6	ug/l	1.6	5.2	1	GRO95/8021		1/20/2014	CJR	1
o-Xylene	< 0.81	ug/l	0.81	2.6	1	GRO95/8021		1/20/2014	CJR	1

Project #

Lab Code 5026416C
 Sample ID MW-3
 Sample Matrix water
 Sample Date 1/14/2014

	Result	Unit	LOD	LOQ	Dil	Method	Ext Date	Run Date	Analyst	Code
Organic										
PVOC + Naphthalene										
Benzene	< 0.27	ug/l	0.27	0.85	1	GRO95/8021		1/20/2014	CJR	1
Ethylbenzene	< 0.82	ug/l	0.82	2.6	1	GRO95/8021		1/20/2014	CJR	1
Methyl tert-butyl ether (MTBE)	< 0.37	ug/l	0.37	1.2	1	GRO95/8021		1/20/2014	CJR	1
Naphthalene	< 1.2	ug/l	1.2	3.8	1	GRO95/8021		1/20/2014	CJR	1
Toluene	< 0.8	ug/l	0.8	2.6	1	GRO95/8021		1/20/2014	CJR	1
1,2,4-Trimethylbenzene	< 0.83	ug/l	0.83	2.6	1	GRO95/8021		1/20/2014	CJR	1
1,3,5-Trimethylbenzene	< 0.86	ug/l	0.86	2.7	1	GRO95/8021		1/20/2014	CJR	1
m&p-Xylene	< 1.6	ug/l	1.6	5.2	1	GRO95/8021		1/20/2014	CJR	1
o-Xylene	< 0.81	ug/l	0.81	2.6	1	GRO95/8021		1/20/2014	CJR	1

Lab Code 5026416D
 Sample ID MW-5
 Sample Matrix water
 Sample Date 1/14/2014

	Result	Unit	LOD	LOQ	Dil	Method	Ext Date	Run Date	Analyst	Code
Organic										
PVOC + Naphthalene										
Benzene	< 0.27	ug/l	0.27	0.85	1	GRO95/8021		1/20/2014	CJR	1
Ethylbenzene	< 0.82	ug/l	0.82	2.6	1	GRO95/8021		1/20/2014	CJR	1
Methyl tert-butyl ether (MTBE)	< 0.37	ug/l	0.37	1.2	1	GRO95/8021		1/20/2014	CJR	1
Naphthalene	< 1.2	ug/l	1.2	3.8	1	GRO95/8021		1/20/2014	CJR	1
Toluene	< 0.8	ug/l	0.8	2.6	1	GRO95/8021		1/20/2014	CJR	1
1,2,4-Trimethylbenzene	< 0.83	ug/l	0.83	2.6	1	GRO95/8021		1/20/2014	CJR	1
1,3,5-Trimethylbenzene	< 0.86	ug/l	0.86	2.7	1	GRO95/8021		1/20/2014	CJR	1
m&p-Xylene	< 1.6	ug/l	1.6	5.2	1	GRO95/8021		1/20/2014	CJR	1
o-Xylene	< 0.81	ug/l	0.81	2.6	1	GRO95/8021		1/20/2014	CJR	1

Lab Code 5026416E
 Sample ID MW-1
 Sample Matrix water
 Sample Date 1/14/2014

	Result	Unit	LOD	LOQ	Dil	Method	Ext Date	Run Date	Analyst	Code
Organic										
PVOC + Naphthalene										
Benzene	< 0.27	ug/l	0.27	0.85	1	GRO95/8021		1/20/2014	CJR	1
Ethylbenzene	< 0.82	ug/l	0.82	2.6	1	GRO95/8021		1/20/2014	CJR	1
Methyl tert-butyl ether (MTBE)	< 0.37	ug/l	0.37	1.2	1	GRO95/8021		1/20/2014	CJR	1
Naphthalene	< 1.2	ug/l	1.2	3.8	1	GRO95/8021		1/20/2014	CJR	1
Toluene	< 0.8	ug/l	0.8	2.6	1	GRO95/8021		1/20/2014	CJR	1
1,2,4-Trimethylbenzene	< 0.83	ug/l	0.83	2.6	1	GRO95/8021		1/20/2014	CJR	1
1,3,5-Trimethylbenzene	< 0.86	ug/l	0.86	2.7	1	GRO95/8021		1/20/2014	CJR	1
m&p-Xylene	< 1.6	ug/l	1.6	5.2	1	GRO95/8021		1/20/2014	CJR	1
o-Xylene	< 0.81	ug/l	0.81	2.6	1	GRO95/8021		1/20/2014	CJR	1

Project Name BROWNTOWN OIL - BROWNTOWN
 Project #

Invoice # E26416

Lab Code 5026416F
 Sample ID MW-2
 Sample Matrix water
 Sample Date 1/14/2014

	Result	Unit	LOD	LOQ	Dil	Method	Ext Date	Run Date	Analyst	Code
Organic										
PVOC + Naphthalene										
Benzene	1.14	ug/l	0.27	0.85	1	GRO95/8021		1/20/2014	CJR	1
Ethylbenzene	< 0.82	ug/l	0.82	2.6	1	GRO95/8021		1/20/2014	CJR	1
Methyl tert-butyl ether (MTBE)	< 0.37	ug/l	0.37	1.2	1	GRO95/8021		1/20/2014	CJR	1
Naphthalene	3.3 "J"	ug/l	1.2	3.8	1	GRO95/8021		1/20/2014	CJR	1
Toluene	< 0.8	ug/l	0.8	2.6	1	GRO95/8021		1/20/2014	CJR	1
1,2,4-Trimethylbenzene	21.4	ug/l	0.83	2.6	1	GRO95/8021		1/20/2014	CJR	1
1,3,5-Trimethylbenzene	10.2	ug/l	0.86	2.7	1	GRO95/8021		1/20/2014	CJR	1
m&p-Xylene	15.1	ug/l	1.6	5.2	1	GRO95/8021		1/20/2014	CJR	1
o-Xylene	9.4	ug/l	0.81	2.6	1	GRO95/8021		1/20/2014	CJR	1

Lab Code 5026416G
 Sample ID TB
 Sample Matrix water
 Sample Date 1/14/2014

	Result	Unit	LOD	LOQ	Dil	Method	Ext Date	Run Date	Analyst	Code
Organic										
PVOC + Naphthalene										
Benzene	< 0.27	ug/l	0.27	0.85	1	GRO95/8021		1/20/2014	CJR	1
Ethylbenzene	< 0.82	ug/l	0.82	2.6	1	GRO95/8021		1/20/2014	CJR	1
Methyl tert-butyl ether (MTBE)	< 0.37	ug/l	0.37	1.2	1	GRO95/8021		1/20/2014	CJR	1
Naphthalene	< 1.2	ug/l	1.2	3.8	1	GRO95/8021		1/20/2014	CJR	1
Toluene	< 0.8	ug/l	0.8	2.6	1	GRO95/8021		1/20/2014	CJR	1
1,2,4-Trimethylbenzene	< 0.83	ug/l	0.83	2.6	1	GRO95/8021		1/20/2014	CJR	1
1,3,5-Trimethylbenzene	< 0.86	ug/l	0.86	2.7	1	GRO95/8021		1/20/2014	CJR	1
m&p-Xylene	< 1.6	ug/l	1.6	5.2	1	GRO95/8021		1/20/2014	CJR	1
o-Xylene	< 0.81	ug/l	0.81	2.6	1	GRO95/8021		1/20/2014	CJR	1

"J" Flag: Analyte detected between LOD and LOQ

LOD Limit of Detection

LOQ Limit of Quantitation

Code	Comment
1	Laboratory QC within limits.

All solid sample results reported on a dry weight basis unless otherwise indicated. All LOD's and LOQ's are adjusted for dilutions but not dry weight. Subcontracted results are denoted by SUB in the analyst field.

Authorized Signature *Michael Ricker*

Synergy Environmental Lab,

1990 Prospect Ct., Appleton, WI 54914 *P 920-830-2455 * F 920-733-0631

JOHN SIGAFUS
JOHN SIGAFUS
PO BOX 187
BROWNTOWN, WI 53522

Report Date 25-Apr-14

Project Name BROWNTOWN OIL STATION
Project #

Invoice # E26855

Lab Code 5026855A
Sample ID MW-6
Sample Matrix Water
Sample Date 4/17/2014

	Result	Unit	LOD	LOQ	Dil	Method	Ext Date	Run Date	Analyst	Code
Organic										
PVOC + Naphthalene										
Benzene	< 0.27	ug/l	0.27	0.85	1	GRO95/8021	4/24/2014	4/24/2014	CJR	1
Ethylbenzene	< 0.82	ug/l	0.82	2.6	1	GRO95/8021	4/24/2014	4/24/2014	CJR	1
Methyl tert-butyl ether (MTBE)	< 0.37	ug/l	0.37	1.2	1	GRO95/8021	4/24/2014	4/24/2014	CJR	1
Naphthalene	< 1.2	ug/l	1.2	3.8	1	GRO95/8021	4/24/2014	4/24/2014	CJR	1
Toluene	< 0.8	ug/l	0.8	2.6	1	GRO95/8021	4/24/2014	4/24/2014	CJR	1
1,2,4-Trimethylbenzene	< 0.83	ug/l	0.83	2.6	1	GRO95/8021	4/24/2014	4/24/2014	CJR	1
1,3,5-Trimethylbenzene	< 0.86	ug/l	0.86	2.7	1	GRO95/8021	4/24/2014	4/24/2014	CJR	1
m&p-Xylene	< 1.6	ug/l	1.6	5.2	1	GRO95/8021	4/24/2014	4/24/2014	CJR	1
o-Xylene	< 0.81	ug/l	0.81	2.6	1	GRO95/8021	4/24/2014	4/24/2014	CJR	1

Lab Code 5026855B
Sample ID MW-4
Sample Matrix Water
Sample Date 4/17/2014

	Result	Unit	LOD	LOQ	Dil	Method	Ext Date	Run Date	Analyst	Code
Organic										
PVOC + Naphthalene										
Benzene	< 0.27	ug/l	0.27	0.85	1	GRO95/8021	4/24/2014	4/24/2014	CJR	1
Ethylbenzene	< 0.82	ug/l	0.82	2.6	1	GRO95/8021	4/24/2014	4/24/2014	CJR	1
Methyl tert-butyl ether (MTBE)	< 0.37	ug/l	0.37	1.2	1	GRO95/8021	4/24/2014	4/24/2014	CJR	1
Naphthalene	< 1.2	ug/l	1.2	3.8	1	GRO95/8021	4/24/2014	4/24/2014	CJR	1
Toluene	< 0.8	ug/l	0.8	2.6	1	GRO95/8021	4/24/2014	4/24/2014	CJR	1
1,2,4-Trimethylbenzene	< 0.83	ug/l	0.83	2.6	1	GRO95/8021	4/24/2014	4/24/2014	CJR	1
1,3,5-Trimethylbenzene	< 0.86	ug/l	0.86	2.7	1	GRO95/8021	4/24/2014	4/24/2014	CJR	1
m&p-Xylene	< 1.6	ug/l	1.6	5.2	1	GRO95/8021	4/24/2014	4/24/2014	CJR	1
o-Xylene	< 0.81	ug/l	0.81	2.6	1	GRO95/8021	4/24/2014	4/24/2014	CJR	1

Project #

Lab Code 5026855C
 Sample ID MW-3
 Sample Matrix Water
 Sample Date 4/17/2014

	Result	Unit	LOD	LOQ	Dil	Method	Ext Date	Run Date	Analyst	Code
Organic										
PVOC + Naphthalene										
Benzene	< 0.27	ug/l	0.27	0.85	1	GRO95/8021		4/24/2014	CJR	1
Ethylbenzene	< 0.82	ug/l	0.82	2.6	1	GRO95/8021		4/24/2014	CJR	1
Methyl tert-butyl ether (MTBE)	< 0.37	ug/l	0.37	1.2	1	GRO95/8021		4/24/2014	CJR	1
Naphthalene	< 1.2	ug/l	1.2	3.8	1	GRO95/8021		4/24/2014	CJR	1
Toluene	< 0.8	ug/l	0.8	2.6	1	GRO95/8021		4/24/2014	CJR	1
1,2,4-Trimethylbenzene	< 0.83	ug/l	0.83	2.6	1	GRO95/8021		4/24/2014	CJR	1
1,3,5-Trimethylbenzene	< 0.86	ug/l	0.86	2.7	1	GRO95/8021		4/24/2014	CJR	1
m&p-Xylene	< 1.6	ug/l	1.6	5.2	1	GRO95/8021		4/24/2014	CJR	1
o-Xylene	< 0.81	ug/l	0.81	2.6	1	GRO95/8021		4/24/2014	CJR	1

Lab Code 5026855D
 Sample ID MW-5
 Sample Matrix Water
 Sample Date 4/17/2014

	Result	Unit	LOD	LOQ	Dil	Method	Ext Date	Run Date	Analyst	Code
Organic										
PVOC + Naphthalene										
Benzene	< 0.27	ug/l	0.27	0.85	1	GRO95/8021		4/24/2014	CJR	1
Ethylbenzene	< 0.82	ug/l	0.82	2.6	1	GRO95/8021		4/24/2014	CJR	1
Methyl tert-butyl ether (MTBE)	< 0.37	ug/l	0.37	1.2	1	GRO95/8021		4/24/2014	CJR	1
Naphthalene	< 1.2	ug/l	1.2	3.8	1	GRO95/8021		4/24/2014	CJR	1
Toluene	< 0.8	ug/l	0.8	2.6	1	GRO95/8021		4/24/2014	CJR	1
1,2,4-Trimethylbenzene	< 0.83	ug/l	0.83	2.6	1	GRO95/8021		4/24/2014	CJR	1
1,3,5-Trimethylbenzene	< 0.86	ug/l	0.86	2.7	1	GRO95/8021		4/24/2014	CJR	1
m&p-Xylene	< 1.6	ug/l	1.6	5.2	1	GRO95/8021		4/24/2014	CJR	1
o-Xylene	< 0.81	ug/l	0.81	2.6	1	GRO95/8021		4/24/2014	CJR	1

Lab Code 5026855E
 Sample ID MW-1
 Sample Matrix Water
 Sample Date 4/17/2014

	Result	Unit	LOD	LOQ	Dil	Method	Ext Date	Run Date	Analyst	Code
Organic										
PVOC + Naphthalene										
Benzene	< 0.27	ug/l	0.27	0.85	1	GRO95/8021		4/24/2014	CJR	1
Ethylbenzene	< 0.82	ug/l	0.82	2.6	1	GRO95/8021		4/24/2014	CJR	1
Methyl tert-butyl ether (MTBE)	< 0.37	ug/l	0.37	1.2	1	GRO95/8021		4/24/2014	CJR	1
Naphthalene	< 1.2	ug/l	1.2	3.8	1	GRO95/8021		4/24/2014	CJR	1
Toluene	< 0.8	ug/l	0.8	2.6	1	GRO95/8021		4/24/2014	CJR	1
1,2,4-Trimethylbenzene	1.29 "J"	ug/l	0.83	2.6	1	GRO95/8021		4/24/2014	CJR	1
1,3,5-Trimethylbenzene	< 0.86	ug/l	0.86	2.7	1	GRO95/8021		4/24/2014	CJR	1
m&p-Xylene	< 1.6	ug/l	1.6	5.2	1	GRO95/8021		4/24/2014	CJR	1
o-Xylene	< 0.81	ug/l	0.81	2.6	1	GRO95/8021		4/24/2014	CJR	1

Project #

Lab Code 5026855F
 Sample ID MW-2
 Sample Matrix Water
 Sample Date 4/17/2014

	Result	Unit	LOD	LOQ	Dil	Method	Ext Date	Run Date	Analyst	Code
Organic										
PVOC + Naphthalene										
Benzene	0.84 "J"	ug/l	0.27	0.85	1	GRO95/8021		4/24/2014	CJR	1
Ethylbenzene	0.97 "J"	ug/l	0.82	2.6	1	GRO95/8021		4/24/2014	CJR	1
Methyl tert-butyl ether (MTBE)	< 0.37	ug/l	0.37	1.2	1	GRO95/8021		4/24/2014	CJR	1
Naphthalene	2.98 "J"	ug/l	1.2	3.8	1	GRO95/8021		4/24/2014	CJR	1
Toluene	< 0.8	ug/l	0.8	2.6	1	GRO95/8021		4/24/2014	CJR	1
1,2,4-Trimethylbenzene	18.6	ug/l	0.83	2.6	1	GRO95/8021		4/24/2014	CJR	1
1,3,5-Trimethylbenzene	10.8	ug/l	0.86	2.7	1	GRO95/8021		4/24/2014	CJR	1
m&p-Xylene	7.2	ug/l	1.6	5.2	1	GRO95/8021		4/24/2014	CJR	1
o-Xylene	9.6	ug/l	0.81	2.6	1	GRO95/8021		4/24/2014	CJR	1

Lab Code 5026855G
 Sample ID TB
 Sample Matrix Water
 Sample Date 4/17/2014

	Result	Unit	LOD	LOQ	Dil	Method	Ext Date	Run Date	Analyst	Code
Organic										
PVOC + Naphthalene										
Benzene	< 0.27	ug/l	0.27	0.85	1	GRO95/8021		4/24/2014	CJR	1
Ethylbenzene	< 0.82	ug/l	0.82	2.6	1	GRO95/8021		4/24/2014	CJR	1
Methyl tert-butyl ether (MTBE)	< 0.37	ug/l	0.37	1.2	1	GRO95/8021		4/24/2014	CJR	1
Naphthalene	< 1.2	ug/l	1.2	3.8	1	GRO95/8021		4/24/2014	CJR	1
Toluene	< 0.8	ug/l	0.8	2.6	1	GRO95/8021		4/24/2014	CJR	1
1,2,4-Trimethylbenzene	< 0.83	ug/l	0.83	2.6	1	GRO95/8021		4/24/2014	CJR	1
1,3,5-Trimethylbenzene	< 0.86	ug/l	0.86	2.7	1	GRO95/8021		4/24/2014	CJR	1
m&p-Xylene	< 1.6	ug/l	1.6	5.2	1	GRO95/8021		4/24/2014	CJR	1
o-Xylene	< 0.81	ug/l	0.81	2.6	1	GRO95/8021		4/24/2014	CJR	1

"J" Flag: Analyte detected between LOD and LOQ

LOD Limit of Detection

LOQ Limit of Quantitation

Code Comment

1 Laboratory QC within limits.

All solid sample results reported on a dry weight basis unless otherwise indicated. All LOD's and LOQ's are adjusted for dilutions but not dry weight. Subcontracted results are denoted by SUB in the analyst field.

Authorized Signature

Michael Ricker

Environmental Lab, Inc.

1990 Prospect Ct. • Appleton, WI 54914
920-830-2455 • FAX 920-733-0631

Sample Handling Request

Rush Analysis Date Required _____
(Rushes accepted only with prior authorization)

Normal Turn Around

Lab I.D. #	
Account No.:	Quote No.:
Project #:	
Sampler: (signature) <i>[Signature]</i>	

Project (Name / Location): <i>Brownstown Oil Station - Brownstown</i>	
Reports To: <i>John Sigafus</i>	Invoice To: <i>John Sigafus c/o METCO</i>
Company:	Company: <i>METCO</i>
Address: <i>P.O. Box 187</i>	Address: <i>709 Gillette St, Ste. 3</i>
City State Zip: <i>Brownstown, WI 53522</i>	City State Zip: <i>La Crosse, WI 54603</i>
Phone:	Phone:
FAX:	FAX:

Analysis Requested										Other Analysis														
Lab I.D.	Sample I.D.	Collection Date	Time	Comp	Grab	Filtered Y/N	No. of Containers	Sample Type (Matrix)*	Preservation	DRO (Mod DRO Sep 95)	GRO (Mod GRO Sep 95)	LEAD	NITRATE/NITRITE	OIL & GREASE	PAH (EPA 8270)	PVOC (EPA 8021)	PVOC + NAPHTHALENE	SULFATE	TOTAL SUSPENDED SOLIDS	VOC DW (EPA 542.2)	VOC (EPA 8260)	6-PCRA METALS	PID/ FID	
S026855A	MW-6	4-17	1015				3	GW	HCL									X						
B	MW-4	↓	1040				↓	↓	↓									X						
C	MW-3	↓	1110				↓	↓	↓									X						
D	MW-5	↓	1135				↓	↓	↓									X						
E	MW-1	↓	1225				↓	↓	↓									X						
F	MW-2	↓	1230				↓	↓	↓									X						
G	TB						1											X						

Comments/Special Instructions (*Specify groundwater "GW", Drinking Water "DW", Waste Water "WW", Soil "S", Air "A", Oil, Sludge etc.)

Lab to send copy of report to METCO/ Jason P. (invoice to METCO)
*let c Rates Apply * Agent Status*

Sample Integrity - To be completed by receiving lab. Method of Shipment: <i>Durban</i> Temp. of Temp. Blank _____ °C On Ice: <i>X</i> Cooler seal intact upon receipt: <i>X</i> Yes _____ No	Relinquished By: (sign) <i>[Signature]</i>	Time: <i>10:10</i>	Date: <i>4/18/14</i>	Received By: (sign) _____	Time: _____	Date: _____
	Received in Laboratory By: <i>[Signature]</i>	Time: <i>8:00</i>	Date: <i>4/21/14</i>			

Synergy Environmental Lab,

1990 Prospect Ct., Appleton, WI 54914 *P 920-830-2455 * F 920-733-0631

JOHN SIGAFUS
JOHN SIGAFUS
PO BOX 187
BROWNTOWN, WI 53522

Report Date 24-Jul-14

Project Name BROWNTOWN OIL
Project #

Invoice # E27348

Lab Code 5027348A
Sample ID MW-6
Sample Matrix Water
Sample Date 7/15/2014

	Result	Unit	LOD	LOQ	Dil	Method	Ext Date	Run Date	Analyst	Code
Organic										
PVOC + Naphthalene										
Benzene	< 0.27	ug/l	0.27	0.85	1	GRO95/8021	7/23/2014	7/23/2014	CJR	1
Ethylbenzene	< 0.82	ug/l	0.82	2.6	1	GRO95/8021	7/23/2014	7/23/2014	CJR	1
Methyl tert-butyl ether (MTBE)	< 0.37	ug/l	0.37	1.2	1	GRO95/8021	7/23/2014	7/23/2014	CJR	1
Naphthalene	< 1.2	ug/l	1.2	3.8	1	GRO95/8021	7/23/2014	7/23/2014	CJR	1
Toluene	< 0.8	ug/l	0.8	2.6	1	GRO95/8021	7/23/2014	7/23/2014	CJR	1
1,2,4-Trimethylbenzene	< 0.83	ug/l	0.83	2.6	1	GRO95/8021	7/23/2014	7/23/2014	CJR	1
1,3,5-Trimethylbenzene	< 0.86	ug/l	0.86	2.7	1	GRO95/8021	7/23/2014	7/23/2014	CJR	1
m&p-Xylene	< 1.6	ug/l	1.6	5.2	1	GRO95/8021	7/23/2014	7/23/2014	CJR	1
o-Xylene	< 0.81	ug/l	0.81	2.6	1	GRO95/8021	7/23/2014	7/23/2014	CJR	1

Lab Code 5027348B
Sample ID MW-4
Sample Matrix Water
Sample Date 7/15/2014

	Result	Unit	LOD	LOQ	Dil	Method	Ext Date	Run Date	Analyst	Code
Organic										
PVOC + Naphthalene										
Benzene	< 0.27	ug/l	0.27	0.85	1	GRO95/8021	7/23/2014	7/23/2014	CJR	1
Ethylbenzene	< 0.82	ug/l	0.82	2.6	1	GRO95/8021	7/23/2014	7/23/2014	CJR	1
Methyl tert-butyl ether (MTBE)	< 0.37	ug/l	0.37	1.2	1	GRO95/8021	7/23/2014	7/23/2014	CJR	1
Naphthalene	< 1.2	ug/l	1.2	3.8	1	GRO95/8021	7/23/2014	7/23/2014	CJR	1
Toluene	< 0.8	ug/l	0.8	2.6	1	GRO95/8021	7/23/2014	7/23/2014	CJR	1
1,2,4-Trimethylbenzene	< 0.83	ug/l	0.83	2.6	1	GRO95/8021	7/23/2014	7/23/2014	CJR	1
1,3,5-Trimethylbenzene	< 0.86	ug/l	0.86	2.7	1	GRO95/8021	7/23/2014	7/23/2014	CJR	1
m&p-Xylene	< 1.6	ug/l	1.6	5.2	1	GRO95/8021	7/23/2014	7/23/2014	CJR	1
o-Xylene	< 0.81	ug/l	0.81	2.6	1	GRO95/8021	7/23/2014	7/23/2014	CJR	1

Project

Lab Code 5027348C
 Sample ID MW-3
 Sample Matrix Water
 Sample Date 7/15/2014

	Result	Unit	LOD	LOQ	Dil	Method	Ext Date	Run Date	Analyst	Code
Organic										
PVOC + Naphthalene										
Benzene	< 0.27	ug/l	0.27	0.85	1	GRO95/8021		7/23/2014	CJR	1
Ethylbenzene	< 0.82	ug/l	0.82	2.6	1	GRO95/8021		7/23/2014	CJR	1
Methyl tert-butyl ether (MTBE)	< 0.37	ug/l	0.37	1.2	1	GRO95/8021		7/23/2014	CJR	1
Naphthalene	< 1.2	ug/l	1.2	3.8	1	GRO95/8021		7/23/2014	CJR	1
Toluene	< 0.8	ug/l	0.8	2.6	1	GRO95/8021		7/23/2014	CJR	1
1,2,4-Trimethylbenzene	< 0.83	ug/l	0.83	2.6	1	GRO95/8021		7/23/2014	CJR	1
1,3,5-Trimethylbenzene	< 0.86	ug/l	0.86	2.7	1	GRO95/8021		7/23/2014	CJR	1
m&p-Xylene	< 1.6	ug/l	1.6	5.2	1	GRO95/8021		7/23/2014	CJR	1
o-Xylene	< 0.81	ug/l	0.81	2.6	1	GRO95/8021		7/23/2014	CJR	1

Lab Code 5027348D
 Sample ID MW-5
 Sample Matrix Water
 Sample Date 7/15/2014

	Result	Unit	LOD	LOQ	Dil	Method	Ext Date	Run Date	Analyst	Code
Organic										
PVOC + Naphthalene										
Benzene	1.28	ug/l	0.27	0.85	1	GRO95/8021		7/23/2014	CJR	1
Ethylbenzene	7.7	ug/l	0.82	2.6	1	GRO95/8021		7/23/2014	CJR	1
Methyl tert-butyl ether (MTBE)	< 0.37	ug/l	0.37	1.2	1	GRO95/8021		7/23/2014	CJR	1
Naphthalene	1.78 "J"	ug/l	1.2	3.8	1	GRO95/8021		7/23/2014	CJR	1
Toluene	2.74	ug/l	0.8	2.6	1	GRO95/8021		7/23/2014	CJR	1
1,2,4-Trimethylbenzene	39	ug/l	0.83	2.6	1	GRO95/8021		7/23/2014	CJR	1
1,3,5-Trimethylbenzene	< 0.86	ug/l	0.86	2.7	1	GRO95/8021		7/23/2014	CJR	1
m&p-Xylene	7.7	ug/l	1.6	5.2	1	GRO95/8021		7/23/2014	CJR	1
o-Xylene	4.5	ug/l	0.81	2.6	1	GRO95/8021		7/23/2014	CJR	1

Lab Code 5027348E
 Sample ID MW-1
 Sample Matrix Water
 Sample Date 7/15/2014

	Result	Unit	LOD	LOQ	Dil	Method	Ext Date	Run Date	Analyst	Code
Organic										
PVOC + Naphthalene										
Benzene	< 0.27	ug/l	0.27	0.85	1	GRO95/8021		7/23/2014	CJR	1
Ethylbenzene	< 0.82	ug/l	0.82	2.6	1	GRO95/8021		7/23/2014	CJR	1
Methyl tert-butyl ether (MTBE)	< 0.37	ug/l	0.37	1.2	1	GRO95/8021		7/23/2014	CJR	1
Naphthalene	< 1.2	ug/l	1.2	3.8	1	GRO95/8021		7/23/2014	CJR	1
Toluene	< 0.8	ug/l	0.8	2.6	1	GRO95/8021		7/23/2014	CJR	1
1,2,4-Trimethylbenzene	< 0.83	ug/l	0.83	2.6	1	GRO95/8021		7/23/2014	CJR	1
1,3,5-Trimethylbenzene	< 0.86	ug/l	0.86	2.7	1	GRO95/8021		7/23/2014	CJR	1
m&p-Xylene	< 1.6	ug/l	1.6	5.2	1	GRO95/8021		7/23/2014	CJR	1
o-Xylene	< 0.81	ug/l	0.81	2.6	1	GRO95/8021		7/23/2014	CJR	1

Project #

Lab Code 5027348F
 Sample ID MW-2
 Sample Matrix Water
 Sample Date 7/15/2014

	Result	Unit	LOD	LOQ	Dil	Method	Ext Date	Run Date	Analyst	Code
Inorganic										
Metals										
Lead, Dissolved	< 0.7	ug/L	0.7	2.5	1	7421		7/22/2014	CWT	1
Organic										
PVOC + Naphthalene										
Benzene	1.88	ug/l	0.27	0.85	1	GRO95/8021		7/23/2014	CJR	1
Ethylbenzene	< 0.82	ug/l	0.82	2.6	1	GRO95/8021		7/23/2014	CJR	1
Methyl tert-butyl ether (MTBE)	< 0.37	ug/l	0.37	1.2	1	GRO95/8021		7/23/2014	CJR	1
Naphthalene	< 1.2	ug/l	1.2	3.8	1	GRO95/8021		7/23/2014	CJR	1
Toluene	< 0.8	ug/l	0.8	2.6	1	GRO95/8021		7/23/2014	CJR	1
1,2,4-Trimethylbenzene	< 0.83	ug/l	0.83	2.6	1	GRO95/8021		7/23/2014	CJR	1
1,3,5-Trimethylbenzene	< 0.86	ug/l	0.86	2.7	1	GRO95/8021		7/23/2014	CJR	1
m&p-Xylene	< 1.6	ug/l	1.6	5.2	1	GRO95/8021		7/23/2014	CJR	1
o-Xylene	< 0.81	ug/l	0.81	2.6	1	GRO95/8021		7/23/2014	CJR	1

Lab Code 5027348G
 Sample ID TB
 Sample Matrix Water
 Sample Date 7/15/2014

	Result	Unit	LOD	LOQ	Dil	Method	Ext Date	Run Date	Analyst	Code
Organic										
PVOC + Naphthalene										
Benzene	< 0.27	ug/l	0.27	0.85	1	GRO95/8021		7/23/2014	CJR	1
Ethylbenzene	< 0.82	ug/l	0.82	2.6	1	GRO95/8021		7/23/2014	CJR	1
Methyl tert-butyl ether (MTBE)	< 0.37	ug/l	0.37	1.2	1	GRO95/8021		7/23/2014	CJR	1
Naphthalene	< 1.2	ug/l	1.2	3.8	1	GRO95/8021		7/23/2014	CJR	1
Toluene	< 0.8	ug/l	0.8	2.6	1	GRO95/8021		7/23/2014	CJR	1
1,2,4-Trimethylbenzene	< 0.83	ug/l	0.83	2.6	1	GRO95/8021		7/23/2014	CJR	1
1,3,5-Trimethylbenzene	< 0.86	ug/l	0.86	2.7	1	GRO95/8021		7/23/2014	CJR	1
m&p-Xylene	< 1.6	ug/l	1.6	5.2	1	GRO95/8021		7/23/2014	CJR	1
o-Xylene	< 0.81	ug/l	0.81	2.6	1	GRO95/8021		7/23/2014	CJR	1

"J" Flag: Analyte detected between LOD and LOQ

LOD Limit of Detection

LOQ Limit of Quantitation

Code **Comment**

1 Laboratory QC within limits.

CWT denotes sub contract lab - Certification #445126660

All solid sample results reported on a dry weight basis unless otherwise indicated. All LOD's and LOQ's are adjusted for dilutions but not dry weight. Subcontracted results are denoted by SUB in the analyst field.

Authorized Signature

Michael Ricker

Synergy Environmental Lab,

1990 Prospect Ct., Appleton, WI 54914 *P 920-830-2455 * F 920-733-0631

JOHN SIGAFUS
 JOHN SIGAFUS
 PO BOX 187
 BROWNTOWN, WI 53522

Report Date 23-Oct-14

Project Name BROWNTOWN OIL STATION
 Project #

Invoice # E27898

Lab Code 5027898A
 Sample ID MW-6
 Sample Matrix Water
 Sample Date 10/15/2014

	Result	Unit	LOD	LOQ	Dil	Method	Ext Date	Run Date	Analyst	Code
Organic										
PVOC + Naphthalene										
Benzene	< 0.24	ug/l	0.24	0.77	1	8260B		10/20/2014	CJR	1
Ethylbenzene	< 0.55	ug/l	0.55	1.7	1	8260B		10/20/2014	CJR	1
Methyl tert-butyl ether (MTBE)	< 0.23	ug/l	0.23	0.74	1	8260B		10/20/2014	CJR	1
Naphthalene	< 1.7	ug/l	1.7	5.5	1	8260B		10/20/2014	CJR	1
Toluene	< 0.69	ug/l	0.69	2.2	1	8260B		10/20/2014	CJR	1
1,2,4-Trimethylbenzene	< 2.2	ug/l	2.2	6.9	1	8260B		10/20/2014	CJR	1
1,3,5-Trimethylbenzene	< 1.4	ug/l	1.4	4.5	1	8260B		10/20/2014	CJR	1
m&p-Xylene	< 0.69	ug/l	0.69	2.2	1	8260B		10/20/2014	CJR	1
o-Xylene	< 0.63	ug/l	0.63	2	1	8260B		10/20/2014	CJR	1

Lab Code 5027898B
 Sample ID MW-4
 Sample Matrix Water
 Sample Date 10/15/2014

	Result	Unit	LOD	LOQ	Dil	Method	Ext Date	Run Date	Analyst	Code
Organic										
PVOC + Naphthalene										
Benzene	< 0.24	ug/l	0.24	0.77	1	8260B		10/20/2014	CJR	1
Ethylbenzene	< 0.55	ug/l	0.55	1.7	1	8260B		10/20/2014	CJR	1
Methyl tert-butyl ether (MTBE)	< 0.23	ug/l	0.23	0.74	1	8260B		10/20/2014	CJR	1
Naphthalene	< 1.7	ug/l	1.7	5.5	1	8260B		10/20/2014	CJR	1
Toluene	< 0.69	ug/l	0.69	2.2	1	8260B		10/20/2014	CJR	1
1,2,4-Trimethylbenzene	< 2.2	ug/l	2.2	6.9	1	8260B		10/20/2014	CJR	1
1,3,5-Trimethylbenzene	< 1.4	ug/l	1.4	4.5	1	8260B		10/20/2014	CJR	1
m&p-Xylene	< 0.69	ug/l	0.69	2.2	1	8260B		10/20/2014	CJR	1
o-Xylene	< 0.63	ug/l	0.63	2	1	8260B		10/20/2014	CJR	1

Project #

Lab Code 5027898C
 Sample ID MW-3
 Sample Matrix Water
 Sample Date 10/15/2014

	Result	Unit	LOD	LOQ	Dil	Method	Ext Date	Run Date	Analyst	Code
Organic										
PVOC + Naphthalene										
Benzene	< 0.27	ug/l	0.27	0.85	1	GRO95/8021		10/21/2014	CJR	1
Ethylbenzene	< 0.82	ug/l	0.82	2.6	1	GRO95/8021		10/21/2014	CJR	1
Methyl tert-butyl ether (MTBE)	< 0.37	ug/l	0.37	1.2	1	GRO95/8021		10/21/2014	CJR	1
Naphthalene	< 1.2	ug/l	1.2	3.8	1	GRO95/8021		10/21/2014	CJR	1
Toluene	< 0.8	ug/l	0.8	2.6	1	GRO95/8021		10/21/2014	CJR	1
1,2,4-Trimethylbenzene	< 0.83	ug/l	0.83	2.6	1	GRO95/8021		10/21/2014	CJR	1
1,3,5-Trimethylbenzene	< 0.86	ug/l	0.86	2.7	1	GRO95/8021		10/21/2014	CJR	1
m&p-Xylene	< 1.6	ug/l	1.6	5.2	1	GRO95/8021		10/21/2014	CJR	1
o-Xylene	< 0.81	ug/l	0.81	2.6	1	GRO95/8021		10/21/2014	CJR	1

Lab Code 5027898D
 Sample ID MW-5
 Sample Matrix Water
 Sample Date 10/15/2014

	Result	Unit	LOD	LOQ	Dil	Method	Ext Date	Run Date	Analyst	Code
Organic										
PVOC + Naphthalene										
Benzene	< 0.27	ug/l	0.27	0.85	1	GRO95/8021		10/21/2014	CJR	1
Ethylbenzene	< 0.82	ug/l	0.82	2.6	1	GRO95/8021		10/21/2014	CJR	1
Methyl tert-butyl ether (MTBE)	< 0.37	ug/l	0.37	1.2	1	GRO95/8021		10/21/2014	CJR	1
Naphthalene	< 1.2	ug/l	1.2	3.8	1	GRO95/8021		10/21/2014	CJR	1
Toluene	< 0.8	ug/l	0.8	2.6	1	GRO95/8021		10/21/2014	CJR	1
1,2,4-Trimethylbenzene	< 0.83	ug/l	0.83	2.6	1	GRO95/8021		10/21/2014	CJR	1
1,3,5-Trimethylbenzene	< 0.86	ug/l	0.86	2.7	1	GRO95/8021		10/21/2014	CJR	1
m&p-Xylene	< 1.6	ug/l	1.6	5.2	1	GRO95/8021		10/21/2014	CJR	1
o-Xylene	< 0.81	ug/l	0.81	2.6	1	GRO95/8021		10/21/2014	CJR	1

Lab Code 5027898E
 Sample ID MW-1
 Sample Matrix Water
 Sample Date 10/15/2014

	Result	Unit	LOD	LOQ	Dil	Method	Ext Date	Run Date	Analyst	Code
Organic										
PVOC + Naphthalene										
Benzene	< 0.27	ug/l	0.27	0.85	1	GRO95/8021		10/21/2014	CJR	1
Ethylbenzene	< 0.82	ug/l	0.82	2.6	1	GRO95/8021		10/21/2014	CJR	1
Methyl tert-butyl ether (MTBE)	< 0.37	ug/l	0.37	1.2	1	GRO95/8021		10/21/2014	CJR	1
Naphthalene	< 1.2	ug/l	1.2	3.8	1	GRO95/8021		10/21/2014	CJR	1
Toluene	< 0.8	ug/l	0.8	2.6	1	GRO95/8021		10/21/2014	CJR	1
1,2,4-Trimethylbenzene	< 0.83	ug/l	0.83	2.6	1	GRO95/8021		10/21/2014	CJR	1
1,3,5-Trimethylbenzene	< 0.86	ug/l	0.86	2.7	1	GRO95/8021		10/21/2014	CJR	1
m&p-Xylene	< 1.6	ug/l	1.6	5.2	1	GRO95/8021		10/21/2014	CJR	1
o-Xylene	< 0.81	ug/l	0.81	2.6	1	GRO95/8021		10/21/2014	CJR	1

Project #

Lab Code 5027898F
 Sample ID MW-2
 Sample Matrix Water
 Sample Date 10/15/2014

	Result	Unit	LOD	LOQ	Dil	Method	Ext Date	Run Date	Analyst	Code
Inorganic										
Metals										
Lead, Dissolved	< 0.7	ug/l	0.7	2.5	1	SW846 7421		10/22/2014	CWT	1
Organic										
PVOC + Naphthalene										
Benzene	0.72 "J"	ug/l	0.27	0.85	1	GRO95/8021		10/21/2014	CJR	1
Ethylbenzene	3.5	ug/l	0.82	2.6	1	GRO95/8021		10/21/2014	CJR	1
Methyl tert-butyl ether (MTBE)	< 0.37	ug/l	0.37	1.2	1	GRO95/8021		10/21/2014	CJR	1
Naphthalene	12.2	ug/l	1.2	3.8	1	GRO95/8021		10/21/2014	CJR	1
Toluene	< 0.8	ug/l	0.8	2.6	1	GRO95/8021		10/21/2014	CJR	1
1,2,4-Trimethylbenzene	63	ug/l	0.83	2.6	1	GRO95/8021		10/21/2014	CJR	1
1,3,5-Trimethylbenzene	27.9	ug/l	0.86	2.7	1	GRO95/8021		10/21/2014	CJR	1
m&p-Xylene	38	ug/l	1.6	5.2	1	GRO95/8021		10/21/2014	CJR	1
o-Xylene	27.1	ug/l	0.81	2.6	1	GRO95/8021		10/21/2014	CJR	1

Lab Code 5027898G
 Sample ID TB
 Sample Matrix Water
 Sample Date 10/15/2014

	Result	Unit	LOD	LOQ	Dil	Method	Ext Date	Run Date	Analyst	Code
Organic										
PVOC + Naphthalene										
Benzene	< 0.27	ug/l	0.27	0.85	1	GRO95/8021		10/21/2014	CJR	1
Ethylbenzene	< 0.82	ug/l	0.82	2.6	1	GRO95/8021		10/21/2014	CJR	1
Methyl tert-butyl ether (MTBE)	< 0.37	ug/l	0.37	1.2	1	GRO95/8021		10/21/2014	CJR	1
Naphthalene	< 1.2	ug/l	1.2	3.8	1	GRO95/8021		10/21/2014	CJR	1
Toluene	< 0.8	ug/l	0.8	2.6	1	GRO95/8021		10/21/2014	CJR	1
1,2,4-Trimethylbenzene	< 0.83	ug/l	0.83	2.6	1	GRO95/8021		10/21/2014	CJR	1
1,3,5-Trimethylbenzene	< 0.86	ug/l	0.86	2.7	1	GRO95/8021		10/21/2014	CJR	1
m&p-Xylene	< 1.6	ug/l	1.6	5.2	1	GRO95/8021		10/21/2014	CJR	1
o-Xylene	< 0.81	ug/l	0.81	2.6	1	GRO95/8021		10/21/2014	CJR	1

"J" Flag: Analyte detected between LOD and LOQ

LOD Limit of Detection

LOQ Limit of Quantitation

Code	Comment
1	Laboratory QC within limits.

CWT denotes sub contract lab - Certification #445126660

All solid sample results reported on a dry weight basis unless otherwise indicated. All LOD's and LOQ's are adjusted for dilutions but not dry weight. Subcontracted results are denoted by SUB in the analyst field.

Authorized Signature

Michael Ricker

