

Hnat, John J - DNR

From: United Engineering Tim Anderson <tauec@sbcglobal.net>
Sent: Tuesday, March 12, 2019 10:17 AM
To: Hnat, John J - DNR
Subject: Sub-Slab Vapor Analytical Results - Former CDC - 10003 W. Carmen Avenue
Attachments: 06004 - Figure - Vapor Sample Location Map.pdf; Analytical Report - Vapor - 2019.02.25.pdf; New Vapor.pdf

J,

Please find the attached sub-slab vapor analytical results for the former CDC. Please ignore the incorrect project number and name on the PACE analytical report. We have asked PACE to reissue the report with the correct name and number. I will forward you a change order request to perform the Pressure Field Extension (PFE) testing and mapping of the property.

Tim Anderson

Timothy J. Anderson, P.E.
Principal

FID 241 170 270

UNITED ENGINEERING CONSULTANTS, INC
16237 W. Ryerson Road, New Berlin, WI 53151
Office (262)785-1447 - Fax (262)706-4400

Table
VOC Analysis - Sub-Slab Vapor
Former Colony Dry Cleaners
10003 W. Carmen Avenue
Milwaukee, Wisconsin 53225
February 25, 2019

Sample Identification	VP-1	VP-2	VP-3	VP-4	VP-5	Residential	Small Commercial
Sample Type	SS	SS	SS	SS	SS	Sub-Slab VRSL	Sub-Slab VRSL
Sample Date	2/25/2019	2/25/2019	2/25/2019	2/25/2019	2/25/2019		
Sample Duration (Hours)	0.5	0.5	0.5	0.5	0.5		
Location	Former Dry Cleaning Room	Warehouse	Former Equipment Room	Office	Warehouse		
Volatile Organic Compounds (VOC) (Method: TO-15)							
Acetone	192	94.5	60.0	127	155	1066667	4666667
Benzene	14.9	13.4	31.3	6.5	8.8	120	530
Chloroethane	<0.48	<0.46	<0.44	<0.47	<0.48	-	-
Cyclohexane	21.4	<0.62	47.0	<0.63	14	210000	866667
1,2-Dichlorobenzene	<0.91	<0.87	<0.85	<0.89	<0.91	7000	29333
1,3-Dichlorobenzene	<1.1	<1.0	<0.99	<1.0	<1.1	-	-
1,4-Dichlorobenzene	<1.8	<1.8	<1.7	<1.8	<1.8	87	367
Dichlorodifluoromethane	1.7J	2.5	2.4	2.3	2.2	3300	15000
1,1-Dichloroethane	<0.41	<0.39	<0.38	<0.40	3.7	600	2600
1,2-Dichloroethane	<0.27	<0.26	<0.26	<0.27	<0.27	37	160
1,1-Dichloroethene	5.0	<0.48	<0.47	<0.49	<0.50	7000	29000
cis-1,2-Dichloroethene	33100	9000	87.2	2.2C8	3020	-	-
trans-1,2-Dichloroethene	2980	814	3.2	<0.51	202	-	-
Ethyl acetate	<0.35	<0.33	<0.32	<0.34	<0.35	2433	10333
Ethylbenzene	4.4	4.1	4.9	3.7	3.3	370	1600
4-Ethyltoluene	<1.0	<1.0	<0.97	<1.0	<1.0	-	-
n-Heptane	29.8	39.5	71.1	10.3	15.5	14000	60000
n-Hexane	62.4	68.6	124	17.3	32.2	24333	103333
Methylene Chloride	<1.7	2.0J	9.0	12.6	3.4J	21000	87000
Styrene	<0.63	<0.60	<0.59	<0.62	7.9	33333	146667
1,1,2,2-Tetrachloroethane	<0.53	<0.51	<0.50	<0.52	<0.53	16	70
Tetrachloroethene	41.0	795	436	110000	936	1400	6000
Toluene	25.6	24.5	42.4	23.1	67.5	173333	733333
1,1,1-Trichloroethane	<0.57	<0.54	<0.53	<0.55	<0.57	170000	730000
1,1,2-Trichloroethane	<0.46	<0.44	<0.43	<0.45	<0.46	7	29
Trichloroethene	386	6990	202	22.3	530	70	290
Trichlorofluoromethane	<0.67	<0.64	1.2J	0.92J	1.4J	-	-
1,2,4-Trimethylbenzene	2.7	<0.79	<0.77	3.5	2.0	2100	8700
1,3,5-Trimethylbenzene	<0.73	<0.70	<0.68	<0.71	<0.73	2100	8700
Vinyl chloride	13.7	<0.22	<0.22	<0.23	<0.23	57	930
m&p-Xylene	8.0	8.2	8.5	7.5	8.1	3300	15000
o-Xylene	2.9	2.7	3.0	2.4	2.7	3300	15000

Notes: All results expressed as µg/m³
VRSL Vapor Risk Screening Level (November 2017 Version)
Residential Sub-slab VRSL exceedances in underline (AF=0.03)
Small Commercial Sub-slab VRSL exceedances in bold (AF=0.03)
- Sub-slab VRSL not established for this compound
J Analyte detected below limit of quantitation
6 Liter Summa Canister
Water Dam Method: Pass
Communication testing not performed
All analysis completed by Pace Analytical Services
Tracer gas was not present in any samples

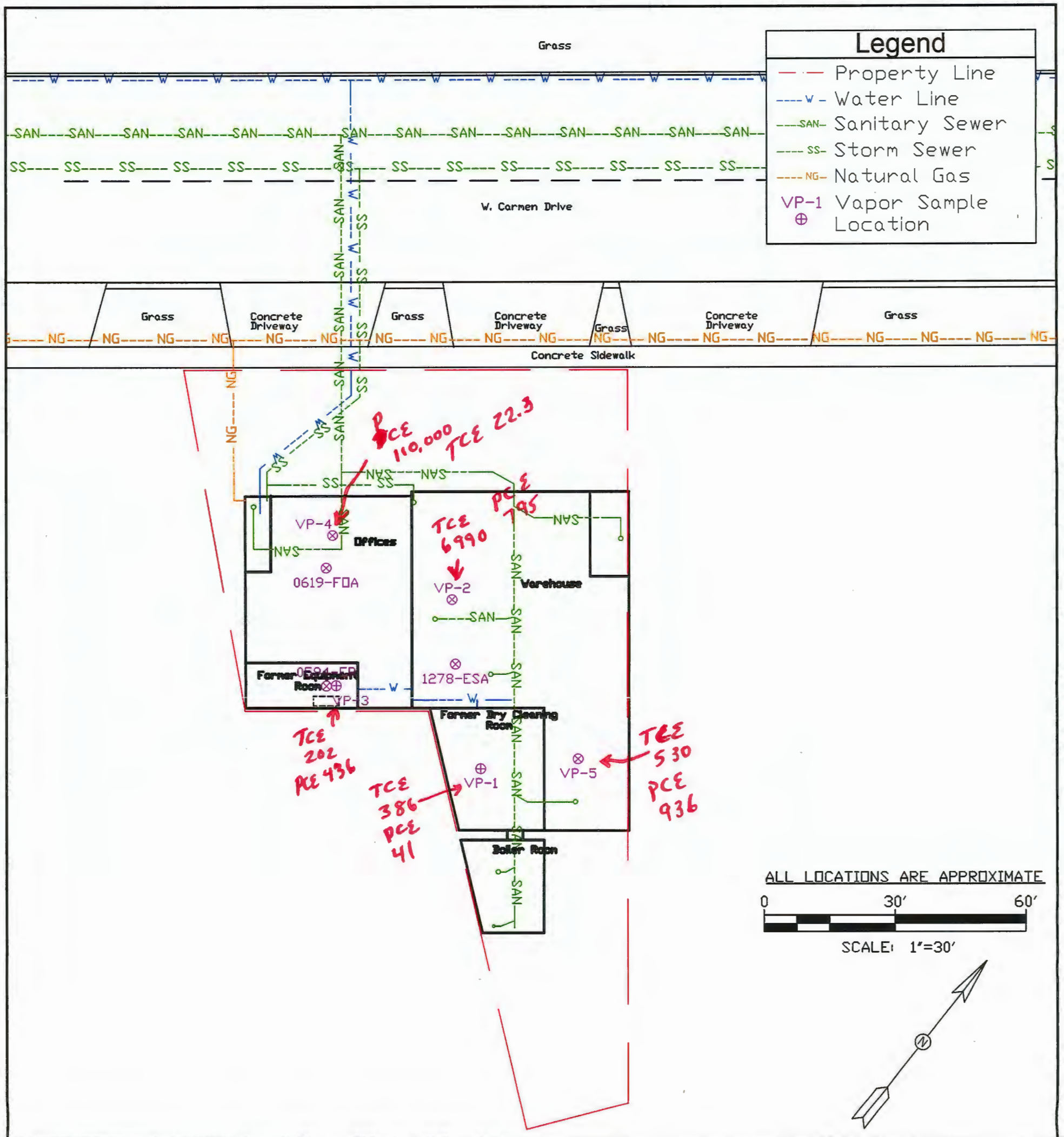


Figure: Sub-Slab Vapor Sample Location Map

United Engineering Consultants, Inc.

16237 W. Ryerson Road
New Berlin, WI 53151

Tel. (262) 785-1447
Fax (262) 706-4400

#06004

DRAWN BY: NJA

DATE: 03/05/2019

Phase II Environmental Site Assessment
Former Colony Dry Cleaners
10003 W. Carmen Avenue
Milwaukee, WI 53225