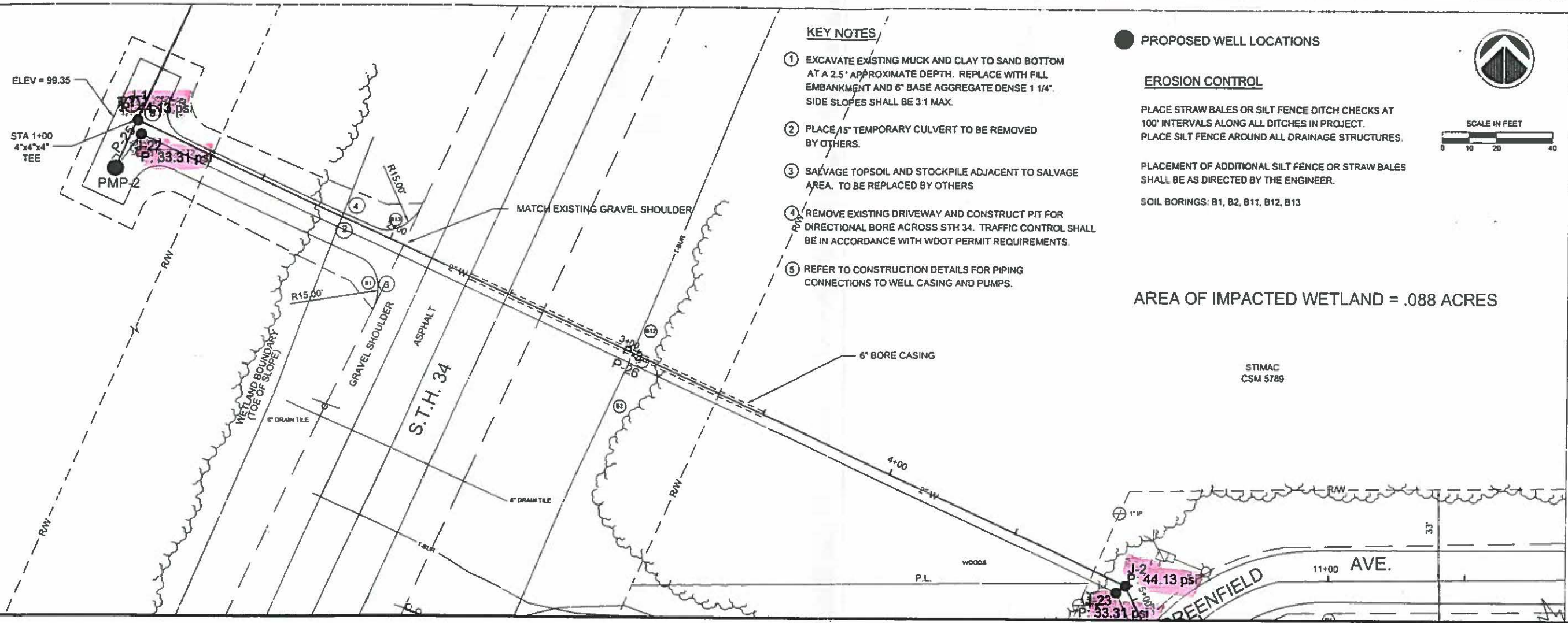


**From:** Randy Murdock <randy@tectomah.com>  
**Sent:** Thursday, October 22, 2020 10:57 AM  
**To:** Schrank, Jayson S - DNR  
**Subject:** Rudolph Foodtree  
**Attachments:** Scanned from a Xerox Multifunction Printer.pdf; Scanned from a Xerox Multifunction Printer.pdf; Scanned from a Xerox Multifunction Printer.pdf; Scanned from a Xerox Multifunction Printer.pdf; Scanned from a Xerox Multifunction Printer.pdf; Scanned from a Xerox Multifunction Printer.pdf; Scanned from a Xerox Multifunction Printer.pdf

**Follow Up Flag:** Follow up  
**Flag Status:** Flagged

Let me know if you cant read any of it

Randy



**KEY NOTES**

- ① EXCAVATE EXISTING MUCK AND CLAY TO SAND BOTTOM AT A 2.5' APPROXIMATE DEPTH. REPLACE WITH FILL EMBANKMENT AND 6" BASE AGGREGATE DENSE 1 1/4". SIDE SLOPES SHALL BE 3:1 MAX.
- ② PLACE 15" TEMPORARY CULVERT TO BE REMOVED BY OTHERS.
- ③ SALVAGE TOPSOIL AND STOCKPILE ADJACENT TO SALVAGE AREA. TO BE REPLACED BY OTHERS
- ④ REMOVE EXISTING DRIVEWAY AND CONSTRUCT PIT FOR DIRECTIONAL BORE ACROSS STH 34. TRAFFIC CONTROL SHALL BE IN ACCORDANCE WITH WDOT PERMIT REQUIREMENTS.
- ⑤ REFER TO CONSTRUCTION DETAILS FOR PIPING CONNECTIONS TO WELL CASING AND PUMPS.

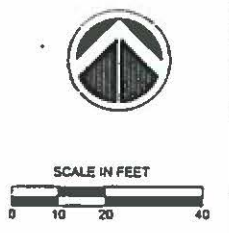
**PROPOSED WELL LOCATIONS**

**EROSION CONTROL**

PLACE STRAW BALES OR SILT FENCE DITCH CHECKS AT 100' INTERVALS ALONG ALL DITCHES IN PROJECT.  
 PLACE SILT FENCE AROUND ALL DRAINAGE STRUCTURES.

PLACEMENT OF ADDITIONAL SILT FENCE OR STRAW BALES SHALL BE AS DIRECTED BY THE ENGINEER.

SOIL BORINGS: B1, B2, B11, B12, B13



AREA OF IMPACTED WETLAND = .088 ACRES

5707 SCHOFIELD AVENUE  
 WESTON, WISCONSIN  
 54476

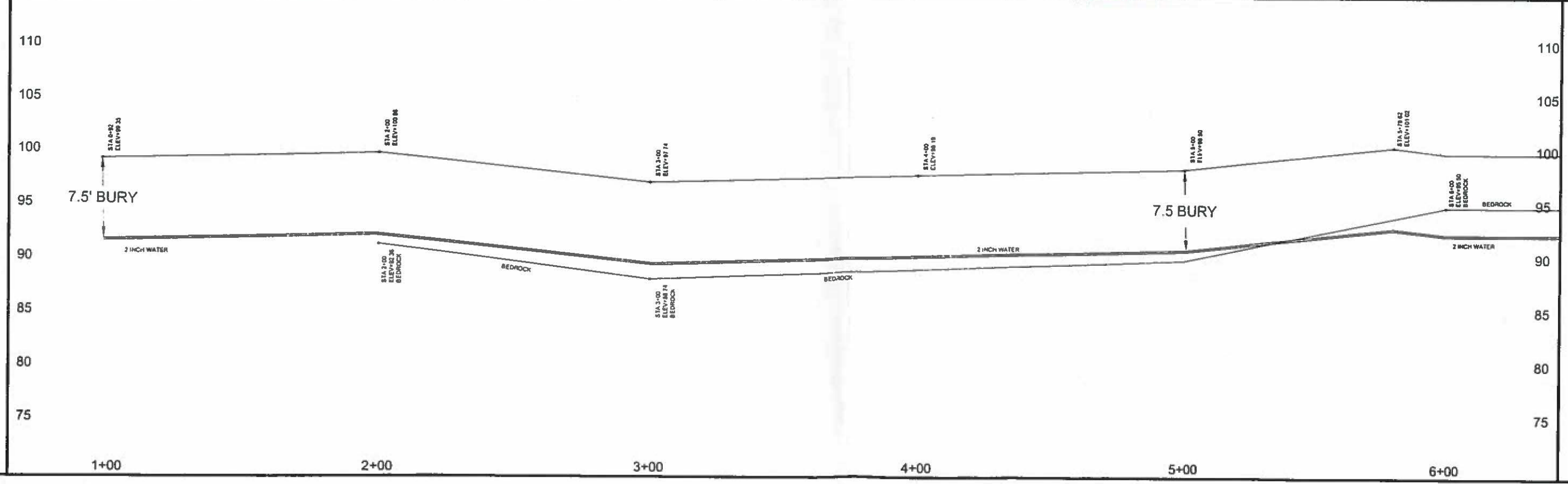
PHONE: (715) 358-9400  
 FAX: (715) 355-4199

general@cwengineers.com  
 http://www.cwengineers.com

PROJECT:

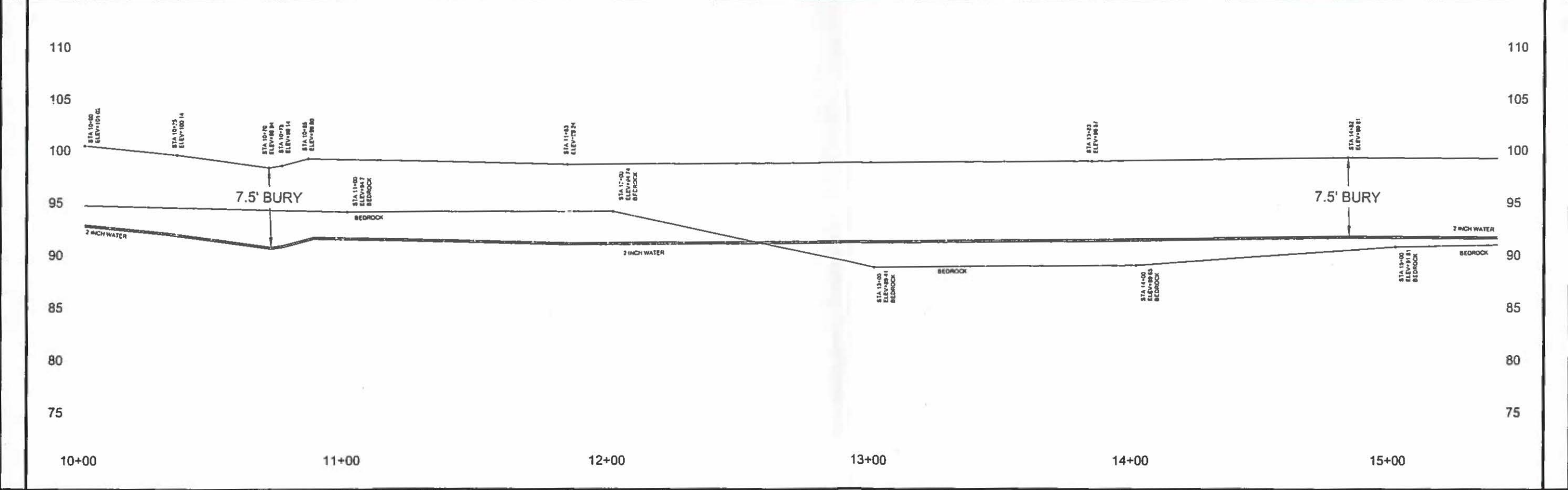
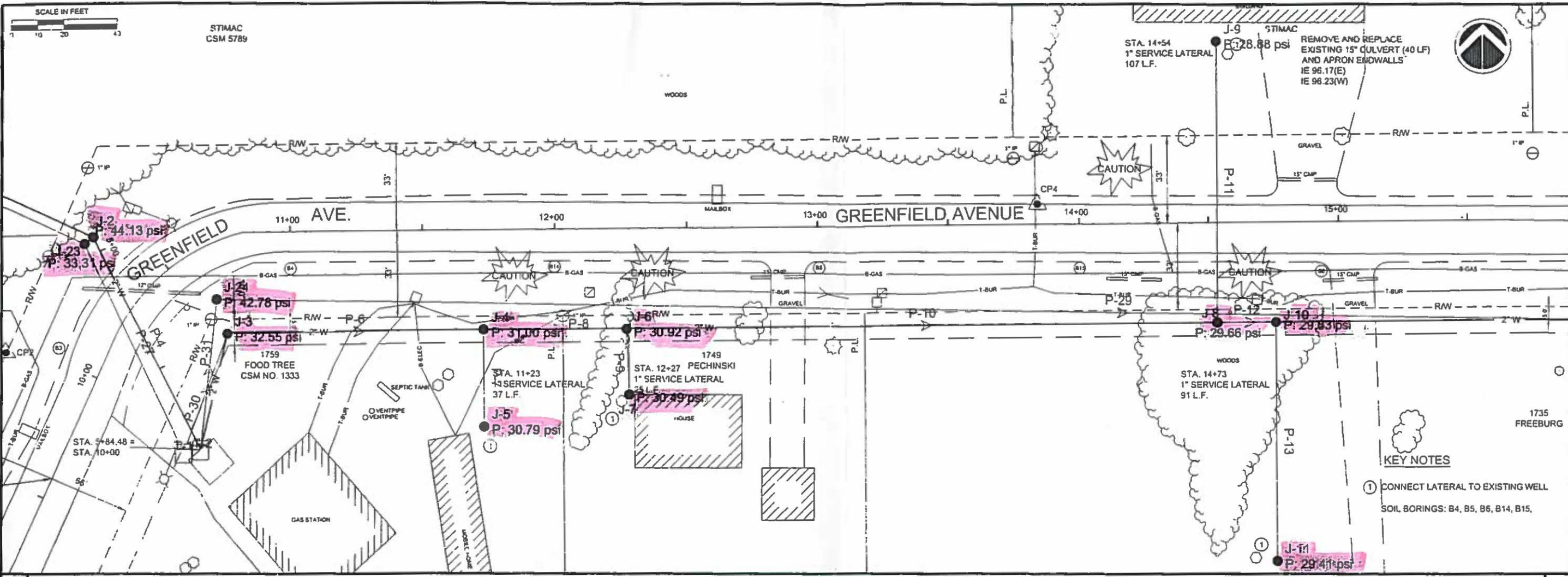
**GREENFIELD AVENUE  
 NON-COMMUNITY WATER SUPPLY  
 IMPROVEMENT PROJECT**

TOWN OF RUDOLPH, WOOD COUNTY, WI



REVISIONS:

DRAWN BY:	R.L.A.
CHECKED BY:	D.J.G.
APPROVED BY:	J.E.H.
DATE:	09-26-05
SHEET:	4 OF 7



STIMAC  
CSM 5789



5707 SCHOFIELD AVENUE  
WESTON, WISCONSIN  
54476  
PHONE: (715) 359-9400  
FAX: (715) 355-4199  
general@cwengineers.com  
http://www.cwengineers.com

PROJECT:  
GREENFIELD AVENUE  
NON-COMMUNITY WATER SUPPLY  
IMPROVEMENT PROJECT  
TOWN OF RUDOLPH, WOOD COUNTY, WI

REVISIONS:  
  
DRAWN BY:  
R.L.A.  
CHECKED BY:  
D.J.G.  
APPROVED BY:  
J.E.H.  
DATE:  
09-26-05  
SHEET:  
5 OF 7

KEY NOTES  
① CONNECT LATERAL TO EXISTING WELL  
SOIL BORINGS: B4, B5, B6, B14, B15.

STA. 14+54  
1" SERVICE LATERAL  
107 L.F.  
J-9 STIMAC  
P: 28.88 psi  
REMOVE AND REPLACE  
EXISTING 15" CULVERT (40 LF)  
AND APRON ENDWALLS  
IE 96.17(E)  
IE 96.23(W)

CAUTION

CAUTION

CAUTION

J-11  
P: 29.41 psi

11+00 AVE.

13+00 GREENFIELD AVENUE

1735 FREEBURG

1759  
FOOD TREE  
CSM NO. 1333

1749  
PECHINSKI  
1" SERVICE LATERAL  
35 L.F.

STA. 14+73  
1" SERVICE LATERAL  
91 L.F.

110  
105  
100  
95  
90  
85  
80  
75  
10+00

110  
105  
100  
95  
90  
85  
80  
75  
15+00

7.5' BURY

7.5' BURY

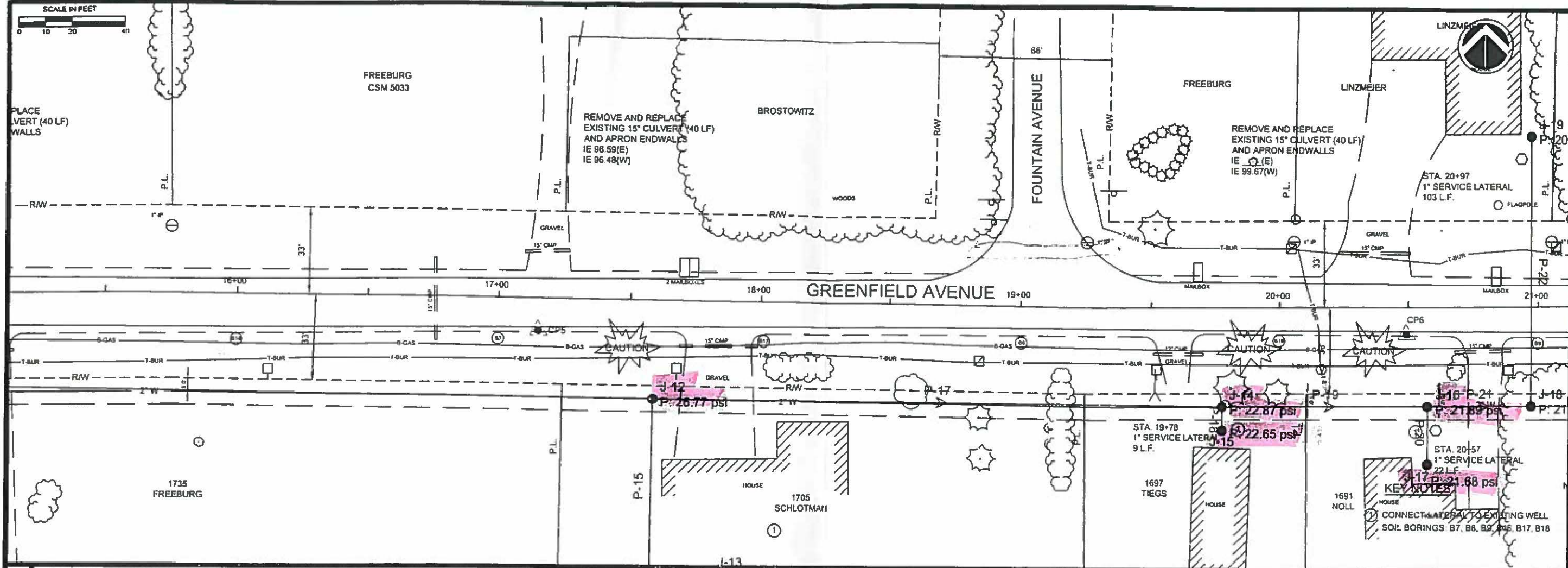
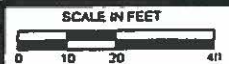
11+00

12+00

13+00

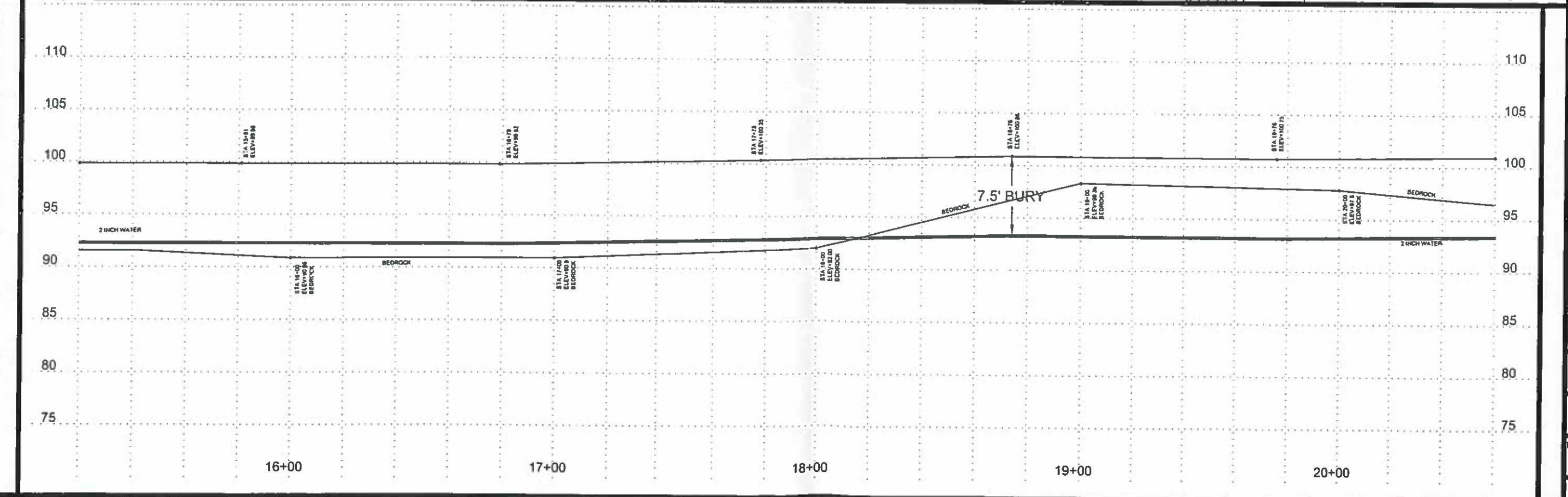
14+00

15+00



5707 SCHOFIELD AVENUE  
WESTON, WISCONSIN  
54476  
PHONE: (715) 359-9400  
FAX: (715) 355-4199  
general@cwengineers.com  
http://www.cwengineers.com

PROJECT:  
**GREENFIELD AVENUE  
NON-COMMUNITY WATER SUPPLY  
IMPROVEMENT PROJECT**  
TOWN OF RUDOLPH, WOOD COUNTY, WI



REVISIONS

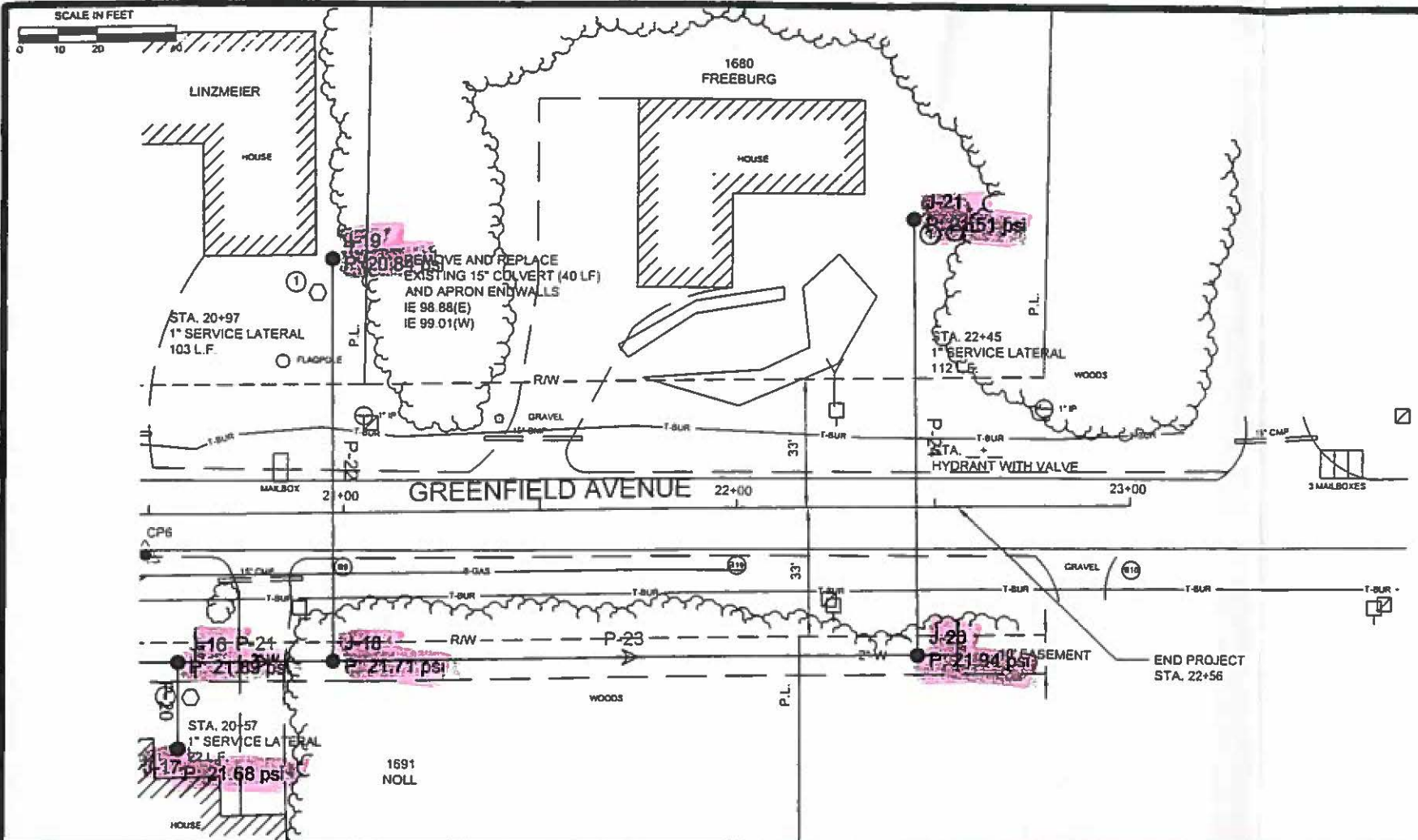
DRAWN BY:  
R.L.A.

CHECKED BY:  
D.J.G.

APPROVED BY:  
J.E.H.

DATE:  
09-26-05

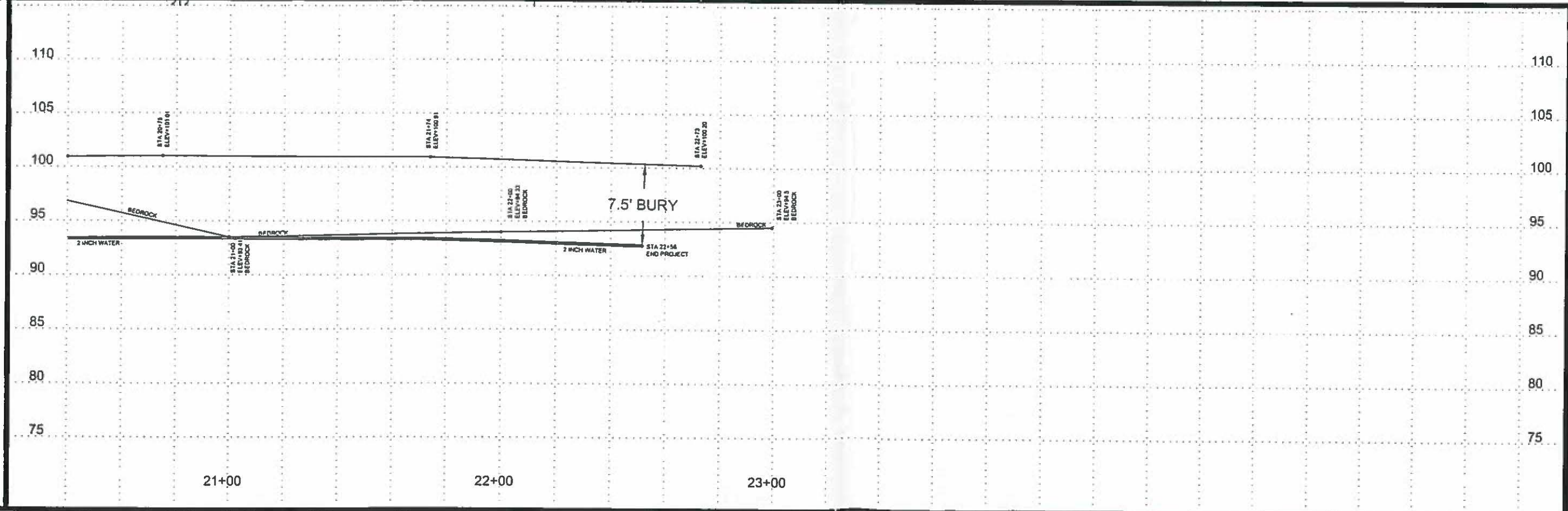
SHEET:  
6 OF 7



**KEY NOTES**

① CONNECT LATERAL TO EXISTING WELL

SOIL BORINGS: B9, B10, B19



5707 SCHOFIELD AVENUE  
WESTON, WISCONSIN  
54476

PHONE: (715) 359-9400  
FAX: (715) 355-4199

general@cwengineers.com  
http://www.cwengineers.com

PROJECT:

**GREENFIELD AVENUE  
NON-COMMUNITY WATER SUPPLY  
IMPROVEMENT PROJECT**

TOWN OF RUDOLPH, WOOD COUNTY, WI

REVISIONS:

DRAWN BY:  
R.L.A.

CHECKED BY:  
D.J.G.

APPROVED BY:  
J.E.H.

DATE:  
09-26-05

SHEET:  
7 OF 7



**Engineers • Architects • Scientists • Surveyors**

5707 Schofield Avenue  
P.O. Box 107  
Weston, WI 54476-0107  
www.cwengineers.com

Tel 715.359.9400  
Fax 715.355.4199  
Toll-free 800.261.5707  
general@cwengineers.com

August 2, 2006

Wisconsin Department of Commerce  
Safety and Buildings Division  
141 NW Barstow Street  
Waukesha WI 53188-3789

Subject: Greenfield Avenue Non-Community Water Supply Improvement Project  
Rudolph, Wisconsin  
CWEA Project # 3511-0400

Dear Department of Commerce:

Enclosed for your review are the following documents for the above-referenced project:

**Plumbing**

- Application for Plumbing Review
- Pressure Computations for Hydro-pneumatic Tank
- Plans depicting the WaterCad modeling pressures of the water system

**Site Erosion Control**

- Storm Water Management and Erosion Control Plan
- Operation and Maintenance Plan
- Greenfield Avenue Non-Community Water Supply Improvement Project Plans and Details

Also attached is check 29473 made payable to the Department of Commerce in the amount of \$325 as required for review of the plumbing and site erosion plans.

If you have any questions, please feel free to contact me at (800) 261-5707 or (715) 359-9400 or via e-mail at [borchardt@cwengineers.com](mailto:borchardt@cwengineers.com).

Sincerely,  
Central Wisconsin Engineers & Architects, Inc.

Dan Borchardt, E.I.T.  
Staff Engineer

enclosures

# **Plumbing Review and Calculations**

## **Greenfield Avenue Non-Community Water Supply Improvement Project**

Town of Rudolph  
Wood County, Wisconsin  
CWEA Project: 3511 04 00  
June 2006

Prepared By: Dan Borchardt, E.I.T.  
Reviewed By: Dave Grutzik, P.E.



DESIGN BASIS: WATER DISTRIBUTION SYSTEM TO 9 RESIDENTIAL HOUSES. 2 WELLS ARE ABLE TO PUMP 6 GPM AND 1 GPM. THE PUMPHOUSE WILL HAVE 2 PRESSURE TANKS, 2 WATER SOFTENERS AND 2 SETS OF PIPING COMING FROM THE WELL TO SERVE 5 AND 4 RESIDENTS RESPECTIVELY. PRESSURE REQUIRED IN HYDRO PNEUMATIC TANKS = 10 GPM

### WATER SUPPLY FIXTURE UNITS (WSFU) SUMMARY

WISCONSIN ADMINISTRATIVE CODE DEPARTMENT OF COMMERCE  
TABLE 82.40-1

- ASSUME EACH HOUSE HAS 15 (WSFU'S)

$$(15 \text{ WSFU'S}) (4 \text{ HOUSES}) = 60 \text{ WSFU'S}$$

$$(15 \text{ WSFU'S}) (5 \text{ HOUSES}) = 75 \text{ WSFU'S}$$

MAX VELOCITY = 8 FT/S  
ALLOWED

### WATER MAIN SIZE CALCULATIONS

TABLE 82.40-3

$$60 \text{ WSFU'S} = 32 \text{ GPM}$$

$$\frac{32 \text{ GPM}}{448.831} = 0.071 \text{ CFS}$$

$$\frac{36.56 \text{ GPM}}{448.831} = 0.081 \text{ CFS}$$

$$75 \text{ WSFU'S} = 36.56 \text{ GPM}$$

$$1 \text{ CFS} = 448.831 \text{ GPM}$$

### MAIN

$$2'' \text{ COPPER TUBE} = \text{AREA} = 0.0218 \text{ ft}^2$$

$$A = \pi r^2 \quad \pi \left(\frac{1}{2}\right)^2$$

$$\text{VELOCITY} = \frac{0.071 \frac{\text{ft}^3}{\text{s}}}{0.0218 \text{ ft}^2} = 3.26 \text{ ft/sec} < 8 \frac{\text{ft}}{\text{s}} \text{ OK}$$

$$\text{VELOCITY} = \frac{0.081 \frac{\text{ft}^3}{\text{s}}}{0.0218 \text{ ft}^2} = 3.73 \frac{\text{ft}}{\text{sec}} < 8 \frac{\text{ft}}{\text{s}} \text{ OK}$$

### SEGMENT 1 (MAIN TO RESIDENT)

$$15 \text{ WSFU} = 11 \text{ GPM} = 0.0245 \text{ CFS}$$

$$1'' \text{ COPPER TUBE} = \text{AREA} = 0.0055 \text{ ft}^2$$

$$\text{VELOCITY} = \frac{0.0245}{0.0055} = 4.45 \frac{\text{ft}}{\text{sec}} < 8 \frac{\text{ft}}{\text{s}} \text{ OK}$$

### PIPE SUMMARY

MAIN 2" COPPER TUBE - TYPE L  
SEGMENT 1 1" COPPER TUBE - TYPE L  
SEGMENT 2 " "  
SEGMENT 3 " "  
SEGMENT 4 " "  
SEGMENT 5 " "



SYSTEM DESIGN

USE GRAPH 82.40 (7)-3 FOR FRICTION LOSS (WISCONSIN ADMINISTRATIVE CODE)

PRESSURE REQUIREMENT AT FARTHEST POINT IN EACH SEGMENT TANK (psi)

	AUTOCAD LENGTH (ft)	PIPE DIAMETER	FRICTION LOSS (psi)
MAIN = 75 WSFU's = 36.5 GPM	744	2"	$= \frac{744}{100} (4.3) = 12.28$
SEGMENT 1 = 15 WSFU's = 11 GPM	71	1"	$= \frac{71}{100} (4.3) = 3.05$
SEGMENT 2 = 15 WSFU's = 11 GPM	61	1"	$= \frac{61}{100} (4.3) = 2.63$
SEGMENT 3 = 15 WSFU's = 11 GPM	50	1"	$= \frac{50}{100} (4.3) = 2.15$
SEGMENT 4 = 15 WSFU's = 11 GPM	142	1"	$= \frac{142}{100} (4.3) = 6.11$

CRITICAL FRICTION LOSS = MAIN + SEGMENT 5 = 12.28 + 6.11 = 18.39 psi

- CALCULATE ABOVE GROUND HEAD (AGH)

ELEVATION DIFFERENCE = 99 (END OF MAIN 1) - 101 (PUMP HOUSE) = -2

FRICTION = 18.39 psi (2.31) = 42.48

MINIMUM PRESSURE = 20 psi (2.31) = 46.2 ft (2.31 Ft OF WATER = 1psi)

AT THE END OF THE LINE CODE 82.40 Pg 58-4 AGH = 88.68 ft

PRESSURE REQUIREMENT AT FARTHEST POINT IN EACH SEGMENT TANK

	AUTOCAD LENGTH (ft)	PIPE DIAMETER	FRICTION LOSS (psi)
MAIN = 60 WSFU's = 32 GPM	1238	2"	$\frac{1238}{100} (1.25) = 15.48$
SEGMENT 1 = 15 WSFU's = 11 GPM	88	1"	$\frac{88}{100} (4.3) = 3.78$
SEGMENT 2 = 15 WSFU's = 11 GPM	64	1"	$\frac{64}{100} (4.3) = 2.75$
SEGMENT 3 = 15 WSFU's = 11 GPM	39	1"	$\frac{39}{100} (4.3) = 1.68$
SEGMENT 4 = 15 WSFU's = 11 GPM	65	1"	$\frac{65}{100} (4.3) = 2.80$

CRITICAL FRICTION LOSS = MAIN + SEGMENT 4 = 15.48 + 2.78 = 18.26

- CALCULATE ABOVE GROUND HEAD (AGH)

ELEVATION DIFFERENCE = 100 (END OF MAIN 2) - 100 = -1

FRICTION = 18.26 psi (2.31) = 42.19 ft

MINIMUM PRESSURE = 20 psi (2.31) = 46.2 ft

AGH = 90.69 ft

SYSTEM DESIGN SUMMARY

- CAPACITY = 32 GPM

AGH @ PUMP HOUSE TANK 1 = 89 = 39 psi

AGH @ PUMP HOUSE TANK 2 = 91 = 40 psi

MODEL RESULTS	TANK 1	TANK 2
	80 ft = 35 psi	101 ft = 44 psi

PRESSURE TANK DESIGN

WELL PUMP CAPACITY WELL 1 = 16 GPM  
 WELL PUMP CAPACITY WELL 2 = 6 GPM

SYSTEM WATER DEMAND = 32 GPM AND 36.5 GPM

## TANK CAPACITY

SYSTEM DEMAND - PUMP CAPACITY  $\times$  5 MINUTE RUNCYCLE  $\times$  4 ( $\frac{1}{4}$  TANK CAPACITY)

$$\text{TANK 1 CAPACITY} = (32 \text{ GPM} - 1) (5) (4) = 620 \text{ GALLONS}$$

MODEL CAPACITY  $\approx$  623 GALLONS

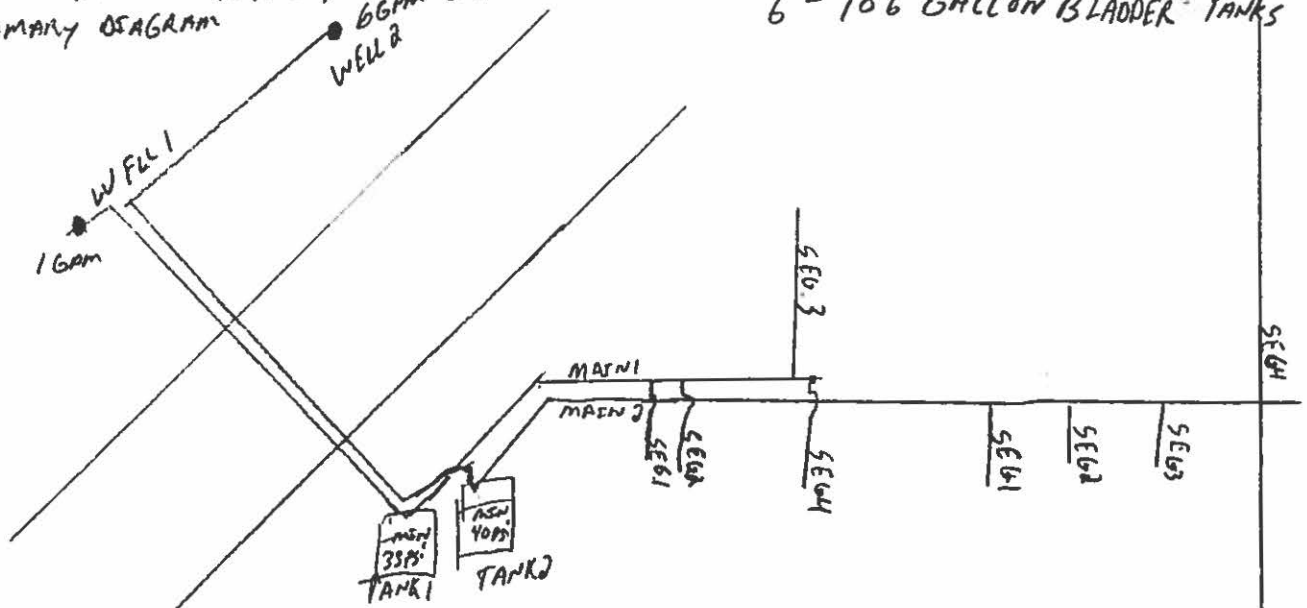
6 - 106 GALLON BLADDER TANKS

$$\text{TANK 2 CAPACITY} = (36.5 \text{ GPM} - 6) (5) (4) = 610 \text{ GALLONS}$$

MODEL CAPACITY = 611 GALLONS

6 - 106 GALLON BLADDER TANKS

SUMMARY DIAGRAM



PLEASE VIEW THE ATTACH PLANS FOR A COMPUTER MODELED  
 WATER ANALYSIS AND SPOT PRESSURES THROUGHOUT  
 THE SYSTEM HIGH LIGHTED IN PINK

Unofficial Text (See Printed Volume). Current through date and Register shown on Title Page.

valve or valves shall equal or exceed the energy input rating in BTU per hour of the water heater. No shut off valve or other restricting device may be installed between the water heater or storage tank and the combination temperature and pressure relief valve.

Note: The temperature steam rating of a combination temperature and pressure relief valve is commonly referred to as the AGA temperature steam rating.

2. All pressurized non-storage type water heaters shall be provided with a pressure relief valve installed at the hot water outlet with no shut off valve between the heater and the relief valve.

3. Temperature and pressure relief valves shall be installed so that the sensing element of the valve extends into the heater or tank and monitors the temperature in the top 6" of the heater or tank.

4. A vacuum relief valve shall be installed in each water heater and hot water storage tank which, when measured from the bottom of the heater or tank, is located more than 20 feet above any faucet or outlet served by the heater or tank.

5. Every relief valve which is designed to discharge water or steam shall be connected to a discharge pipe.

a. The discharge pipe and fittings shall be made of a material acceptable for water distribution piping in accordance with s. Comm 84.30 (4) (e) 1.

b. The discharge pipe and fittings shall have a diameter not less than the diameter of the relief valve outlet.

c. The discharge pipe may not be trapped.

d. No valve may be installed in the discharge pipe.

e. The discharge pipe shall be installed to drain by gravity flow to a floor served by a floor drain or to a receptor in accordance with s. Comm 82.33 (8). The outlet of the discharge pipe shall terminate within 6" over the floor or receptor, but not less than a distance equal to twice the diameter of the outlet pipe. The outlet of the discharge pipe may not be threaded.

f. The discharge pipe for a water heater shall terminate within the same room or enclosure within which the water heater or hot water storage tank is located.

(c) *Controls.* 1. All hot water supply systems shall be equipped with automatic temperature controls capable of adjustments from the lowest to the highest acceptable temperature settings for the intended use.

2. A separate means shall be provided to terminate the energy supplied to each water heater and each hot water circulation system.

(6) **LOAD FACTORS FOR WATER SUPPLY SYSTEMS.** (a) *Intermittent flow fixtures.* The load factor for intermittent flow fixtures on water supply piping shall be computed in terms of water supply fixture units as specified in Tables 82.40-1 and 82.40-2 for the corresponding fixture and use. Water supply fixture units may be converted to gallons per minute in accordance with Table 82.40-3.

Table 82.40-1  
WATER SUPPLY FIXTURE UNITS FOR  
NONPUBLIC USE FIXTURES

Type of Fixture <sup>a</sup>	Water Supply Fixture Units (wsfu)		
	Hot	Cold	Total
Automatic Clothes Washer	1.0	1.0	1.5
Bar Sink	0.5	0.5	1.0
Bathtub, with or without Shower Head	1.5	1.5	2.0
Bidet	1.0	1.0	1.5
Dishwashing Machine	1.0		1.0
Glass Filler		0.5	0.5
Hose Bibb:			
1/2" diameter		3.0	3.0
3/4" diameter		4.0	4.0
Kitchen Sink	1.0	1.0	1.5
Laundry Tray, 1 or 2 Compartment	1.0	1.0	1.5
Lavatory	0.5	0.5	1.0
Mobile Home	—	15	15
Shower, Per Head	1.0	1.0	1.5
Water Closet, Flushometer Type		6.0	6.0
Water Closet, Gravity Type Flush Tank		2.0	2.0
<b>Bathroom Groups:</b>			
Bathtub, Lavatory and Water Closet-FM <sup>b</sup>	2.0	7.5	8.0
Bathtub, Lavatory and Water Closet-FT <sup>c</sup>	2.0	3.5	4.0
Shower Stall, Lavatory and Water Closet-FM	1.5	7.0	7.5
Shower Stall, Lavatory and Water Closet-FT	1.5	3.0	3.5

<sup>a</sup> For fixtures not listed, factors may be assumed by comparing the fixture to a listed fixture which uses water in similar quantities and at similar rates.

<sup>b</sup> FM means flushometer type.

<sup>c</sup> FT means flush tank type.

(b) *Continuous flow devices.* The load factor for equipment which demands a continuous flow of water shall be computed on the basis of anticipated flow rate in terms of gallons per minute.

(7) **SIZING OF WATER SUPPLY PIPING.** The sizing of the water supply system shall be based on the empirical method and limitations outlined in this subsection or on a detailed engineering analysis acceptable to the department.

(a) *Methodology.* The determination of minimum pipe sizes shall take into account the pressure losses which occur throughout the entire water supply system and the flow velocities within the water distribution system. Calculations for sizing a water distribution system shall include:

1. The load factor in water supply fixture units or gallons per minute on the piping;

2. The minimum pressure available from the water main or pressure tank;

3. The pressure loss due to the differences in elevation from the:

a. Water main or pressure tank to the building control valve; and

b. Building control valve to the controlling plumbing fixture;

Unofficial Text (See Printed Volume). Current through date and Register shown on Title Page.

Table 82.40-2  
WATER SUPPLY FIXTURE UNITS FOR  
PUBLIC USE FIXTURES

Type of Fixture <sup>a</sup>	Water Supply Fixture Units (wsfu)		
	Hot	Cold	Total
Automatic Clothes Washer, Individual	2.0	2.0	3.0
Automatic Clothes Washer, Large Capacity	b	b	b
Autopsy Table	2.0	2.0	3.0
Bathub, With or Without Shower Head	2.0	2.0	3.0
Coffeemaker		0.5	0.5
Dishwasher, Commercial	b	b	b
Drink Dispenser		0.5	0.5
Drinking Fountain		0.25	0.25
Glass Filler		0.5	0.5
Health Care Fixtures:			
Clinic sink	2.0	7.0	7.0
Exam/treatment sink	0.5	0.5	1.0
Service sink	2.0	2.0	3.0
Sitz bath	1.5	1.5	2.0
Surgeon washup	1.5	1.5	2.0
Hose Bibb:			
1/2" diameter		3.0	3.0
3/4" diameter		4.0	4.0
Icemaker		0.5	0.5
Lavatory	0.5	0.5	1.0
Shower, Per Head	2.0	2.0	3.0
Sinks:			
Bar and Fountain	1.5	1.5	2.0
Barber and Shampoo	1.5	1.5	2.0
Cup		0.5	0.5
Flushing Rim		7.0	7.0
Kitchen and Food Preparation per faucet	2.0	2.0	3.0
Laboratory	1.0	1.0	1.5
Urinal:			
Syphon Jet		4.0	4.0
Washdown		2.0	2.0
Wall Hydrant, Hot and Cold Mix:			
1/2" diameter	2.0	2.0	3.0
3/4" diameter	3.0	3.0	4.0
Wash Fountain:			
Semicircular	1.5	1.5	2.0
Circular	2.0	2.0	3.0
Water Closet:			
Flushometer		6.5	6.5
Gravity Type Flush Tank		3.0	3.0

<sup>a</sup> For fixtures not listed, factors may be assumed by comparing the fixture to a listed fixture which uses water in similar quantities and at similar rates.

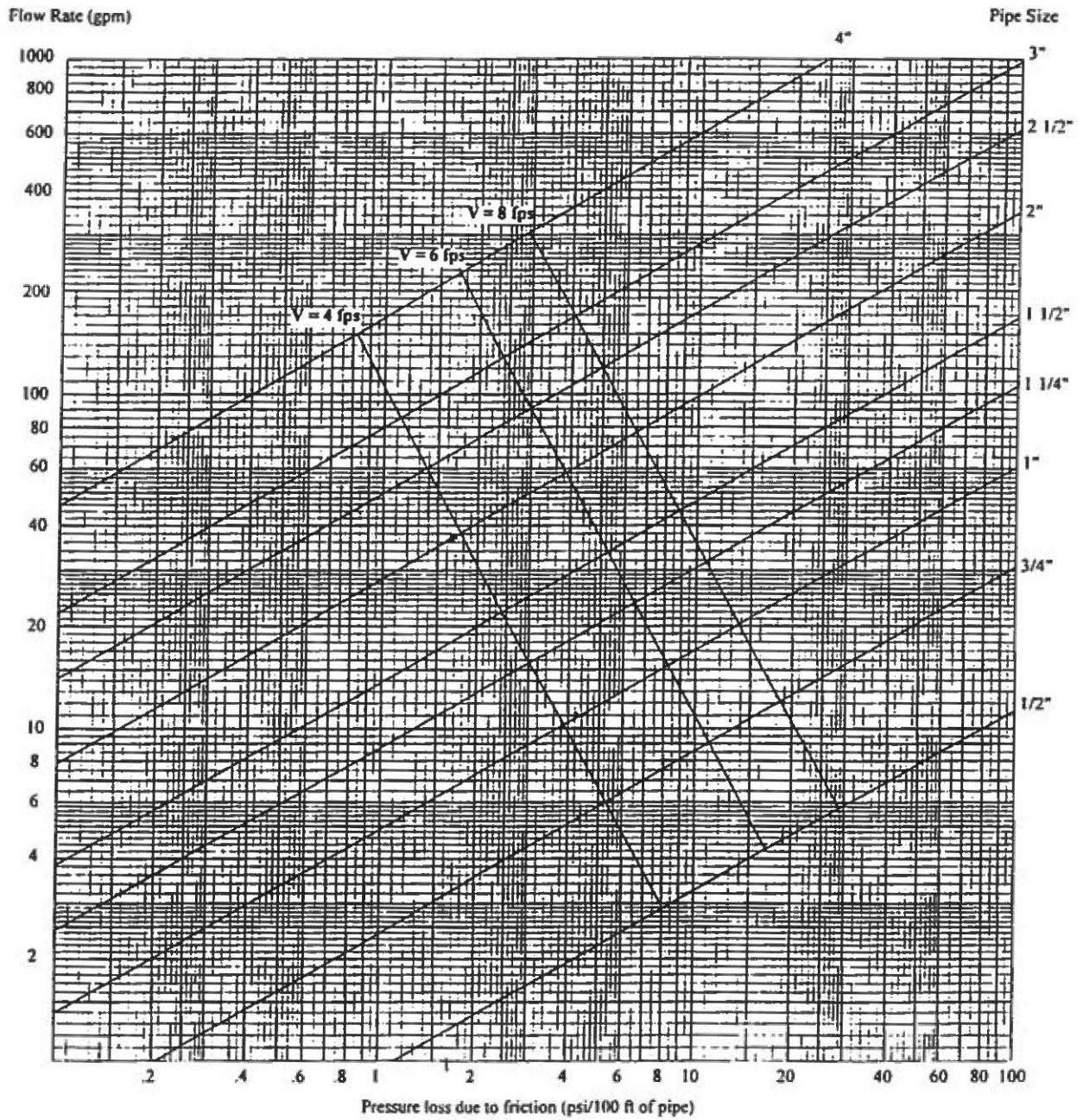
<sup>b</sup> Load factors in gallons per minute, gpm, based on manufacturer's requirements.

Table 82.40-3  
CONVERSION OF WATER SUPPLY FIXTURE UNITS  
TO GALLONS PER MINUTE

Water Supply Fixture Units	Gallons per Minute	
	Predominately Flushometer Type Water Closets or Syphon Jet Urinals	Predominately Flush Tank Type Water Closets or Washdown Urinals
1	—	1
2	—	2
3	—	3
4	10	4
5	15	4.5
6	18	5
7	21	6
8	24	6.5
9	26	7
10	27	8
20	35	14
30	40	20
40	46	24
50	51	28
60	54	32
70	58	35
80	62	38
90	65	41
100	68	42
120	73	48
140	78	53
160	83	57
180	87	61
200	92	65
250	101	75
300	110	85
400	126	105
500	142	125
600	157	143
700	170	161
800	183	178
900	197	195
1000	208	208
1250	240	240
1500	267	267
1750	294	294
2000	321	321
2250	348	348
2500	375	375
2750	402	402
3000	432	432
4000	525	525
5000	593	593

Note: Values not specified in the table may be calculated by interpolation.

Graph A-82.40 (7)-3  
Pressure losses due to flow friction  
Material: Copper Tube-Type L, ASTM B88





**Engineers • Architects • Scientists • Surveyors**

5707 Schofield Avenue  
P.O. Box 107  
Weston, WI 54476-0107  
www.cwengineers.com

Tel 715.359.9400  
Fax 715.355.4199  
Toll-free 800.261.5707  
general@cwengineers.com

August 9, 2006

Ms. Carol L. Kobza  
2898 Lone Pine Road  
Wisconsin Rapids, WI 54495

**Re: Rudolph Water Supply Improvement Project**  
Food Tree – Rudolph, WI  
CWEA Project # 3511-0400

**Subject: Agreement to Install Water Service Laterals**

Dear Ms. Kobza:

Attached is the *Access Agreement* regarding the installation of the new lateral water line to your property in Rudolph. The new water supply will be connected to the existing piping system and then tested to ensure that the water quality conforms to the state standards. Construction work on your lateral water line is expected to take place in late August or early September. Unless directed otherwise by the Wisconsin Department of Natural Resources, the existing water supply wells will be properly abandoned.

**Please review, sign and date the attached *Access Agreement*, and return one signed copy to me in the envelope provided.**

If you have any questions, please feel free to contact me at (800) 261-5707 or (715) 359-9400. Thank you for your time in this matter, it is greatly appreciated.

Sincerely,  
Central Wisconsin Engineers & Architects, Inc.

Cindy L. Zelenka  
Environmental Specialist

Enclosures: Site Layout Map  
*Access Agreement* for New Lateral Water Lines

## ACCESS AGREEMENT

The parties enter into the following agreement this 9th day of August, 2006.

### RECITALS:

1. Carol L. Kobza (hereafter referred to as "OWNER") is the owner of real estate located at 1697 Greenfield Ave., Town of Rudolph, Wisconsin (the "Property").
2. Inderbans Brar, owner of The Food Tree, has offered to install a lateral connection on the Property to connect the OWNER's residence to the replacement drinking water system pipeline along Greenfield Avenue, Town of Rudolph, and Owner has accepted this offer.
3. Mr. Brar has retained Central Wisconsin Engineers and Architects, Inc. ("CWEA") to design and oversee the construction of the replacement drinking water system.
4. CWEA and its CONTRACTORS require access to the Property to install a lateral connection to the replacement drinking water system. The lateral will connect the replacement drinking system to the OWNER's preexisting plumbing at the location of the OWNER's prior drinking water well.

### AGREEMENT

Therefore, the parties agree as follows:

5. Access and Purposes. OWNER hereby permits CWEA and its CONTRACTORS, its employees, duly authorized representatives, agents and subcontractors, to enter upon and have rights of ingress and egress over and access at reasonable times to the Property for the following purposes:
  - To enter the Property with the necessary equipment via the existing driveway.
  - To set up appropriate staging and storage areas on the Property.
  - To perform excavations necessary to install the lateral.
  - To perform dewatering activities necessary to perform the work.
  - To install and maintain erosion control measures.
  - To perform all necessary property restoration activities after the lateral connection is complete.
  - To close out the OWNER's prior drinking water well as required by DNR.

6. Term. The term of this Agreement will commence upon execution of this Agreement and continue until restoration activities are complete.

7. Insurance and Bonds. CWEA and all subcontractors shall maintain, at minimum, insurance coverages as specified in the *Standard General Conditions of the Construction Contract*, prepared by the Engineers Joint Contract Documents Committee (EJCDC), which has been approved by The Associated General Contractors of America. CWEA also requires submittal of Performance and Payment Bonds from the awarded contractor.

8. Standard of Care. CWEA agrees to use its best efforts to minimize the damage caused to the property and to restore the OWNER's property to its original condition.

9. Applicable Law. This Agreement shall be construed in accordance with the laws of the state of Wisconsin.

IN WITNESS WHEREOF, the parties have executed this Access Agreement as of the day, month and year first above written.

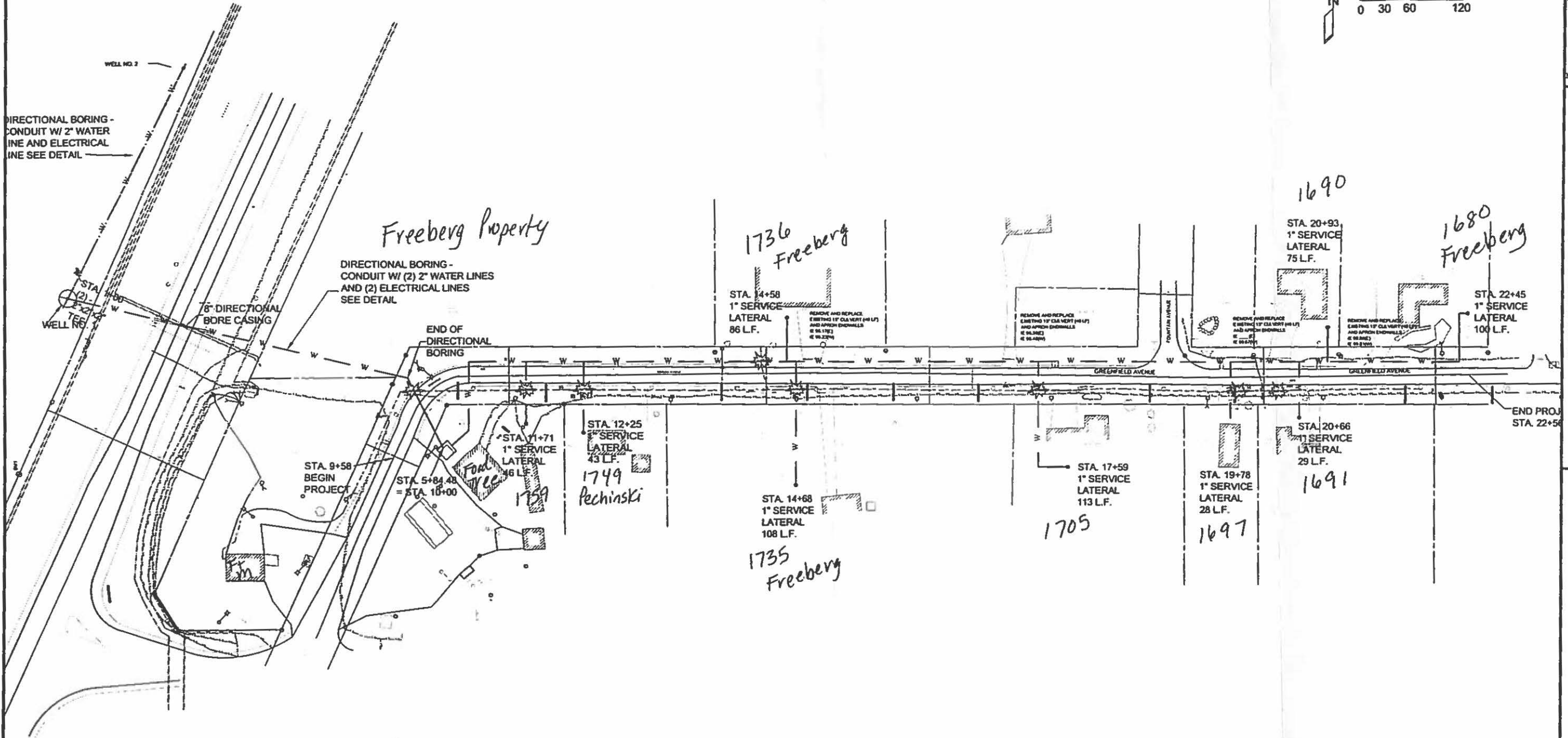
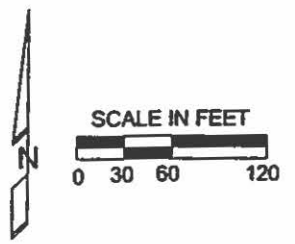
**CENTRAL WISCONSIN ENGINEERS AND ARCHITECTS, INC.:**

By: Dave Gutzwill / CLZ  
Title: Project Engineer

**OWNER:**

By: \_\_\_\_\_  
\_\_\_\_\_

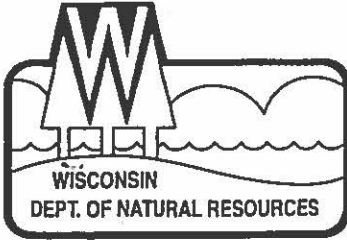




**LEGEND**

———	PROPERTY LINE
— UE — UE —	UNDERGROUND ELECTRIC
— UFO — UFO —	UNDERGROUND FIBER OPTIC
— UT — UT — UT — UT —	UNDERGROUND PHONE
— UG — UG —	UNDERGROUND GAS
— W —	WATERMAIN

DATE PLOTTED: 07/11/05 3:17:20 PM



State of Wisconsin \ DEPARTMENT OF NATURAL RESOURCES

Jim Doyle, Governor  
Scott Hassett, Secretary

Place Holder DNR Address Line 1  
473 Griffith Street  
Wisconsin Rapids, Wisconsin 54494  
Telephone 715-421-7815  
FAX 715-421-7830

September 28, 2005

Inderbans Brar  
1809 Savannah Way  
Waunakee, WI 53597

**RECEIVED**  
**SEP 29 2005**

IP-WC-2005-72-0595CW  
Corps # 2005-2106-CKK

Dear Mr. Brar:

The Department of Natural Resources has evaluated your request for water quality certification pursuant to Section 401 of the federal Clean Water Act and Chapter NR 299, Wisconsin Administrative Code to construct a fill pad for a well site. This project affects 0.088 acres of wetlands.

Our records indicate your project is located in the SW¼, S20, T23N, R6E, Town of Rudolph, Wood County.

Your application is complete, and the Department has determined that this activity complies with the conditions of the Corps general permit and state water quality certification. One of the conditions of this permit is that you shall allow Department personnel reasonable entry and access to the site to inspect the discharge for compliance with certification and applicable laws. All fill material associated with the Water Quality Certification Permit (IP-WC-2004-72-0337CW) issued in 2004 shall be removed and deposited on an upland location.

You are responsible for obtaining any permit or approval that may be required for your project by local zoning ordinances or by the U.S. Army Corps of Engineers before starting your project.

You should also obtain any required wetland, grading or similar permits from your local Zoning office prior to commencing this project.

No further information is required of you before you begin your project. Please keep this letter as a confirmation of your contact with us.

Sincerely,

Terence M. Kafka  
Water Management Specialist

- cc: Mr. Chris Knotts, U.S. Army Corps of Engineers
- Mr. Eric Brach, DNR Water Supply
- Mr. Tom Hvizdak, DNR Hydrogeologist
- Mr. Marvin Krzykowski, Wood County Zoning Administrator
- Mr. Dave Grutzik, CWE, 5707 Schofield Ave., Weston, WI 54476





Engineers · Architects · Scientists · Surveyors

5707 Schofield Avenue  
P.O. Box 107  
Weston, WI 54476-0107  
www.cwengineers.com

Tel 715.359.9400  
Fax 715.355.4199  
Toll-free 800.261.5707  
general@cwengineers.com

# Transmittal Letter

TO: WI DNR  
\_\_\_\_\_  
\_\_\_\_\_  
\_\_\_\_\_

Date:	9/2/2005	Job #	35110400
Attention:	AMY		
Re:	FOOD TREE WCS		

- |  |   |                                  |   |
|--|---|----------------------------------|---|
| <input type="checkbox"/> Attached      | <input type="checkbox"/> Separate Cover | <input type="checkbox"/> Plans   | <input checked="" type="checkbox"/> Other |
| <input type="checkbox"/> Shop Drawings | <input type="checkbox"/> Prints         | <input type="checkbox"/> Samples |   |
| <input type="checkbox"/> Letter        | <input type="checkbox"/> Change Order   | <input type="checkbox"/> Spec.   |   |

Copies	Date	Item	Description
1		COPY	WCS
1		CK	#28339

The above items are transmitted for your action as noted:

- |   |   |  |   |
|---|---|--|---|
| <input type="checkbox"/> For Approval             | <input type="checkbox"/> For Review and Comment | <input type="checkbox"/> Copies for Approval | <input type="checkbox"/> Submit           |
| <input type="checkbox"/> For Your Use             | <input type="checkbox"/> Approved as Submitted  | <input type="checkbox"/> As Requested        | <input checked="" type="checkbox"/> Other |
| <input type="checkbox"/> Returned for Corrections | <input type="checkbox"/> Approved as Noted      | <input type="checkbox"/> Resubmit            |   |

Remarks:

Enclosed please find items listed above. As always, if there are any questions or concerns, please contact me.

Sincerely

Dave Grutzik

Copy to:

Signed:  
David J Grutzik, P.E.

**CENTRAL WISCONSIN ENGINEERS  
& ARCHITECTS, INC.**

5707 SCHOFIELD AVE.  
WESTON, WI 54476  
715-359-9400

RIVER VALLEY STATE BANK  
ROTHSCHILD, WI 54474  
79-1174-759

28339

28339

Exactly Five hundred and no / 100 Dollars

DATE	AMOUNT
9/2/2005	\$500.00

to the  
order  
of

WI DNR WEST CENTRAL REGION HDQRS  
1300 W. CLAIREMONT AVE., BOX 4001  
EAU CLAIRE WI 54702-4001

VOID AFTER 60 DAYS

*[Handwritten Signature]*  
*[Handwritten Signature]*

⑈0 28339⑈ ⑆075911742⑆

121 940⑈

Details on back.  
Security Features Included.

**CENTRAL WISCONSIN ENGINEERS & ARCHITECTS, INC.**

28339

WI DNR WEST CENTRAL REGION HDQRS

Check Number: 28339

Date: 9/2/2005

Check Amt: \$500.00

Tran #	Invoice	Type	Date	Reference
23209	23209	Invoice	08/31/05	PROJECT #35110400

Balance \$500.00

Discount \$0.00

Pay Amount \$500.00

## INFORMATIONAL REQUIREMENTS FOR PRACTICABLE ALTERNATIVES ANALYSIS

All of the questions must be answered in detail and supported with documentation (attach additional sheets if needed).

### I Background/Description of Project

#### A. Describe the purpose and need for the project

This project will construct one low capacity water well on the affected site. The well will create an alternate water supply for 8 residential home affected by contaminated groundwater.

Source of contamination has been identified as a leaking fuel tank from the Food Tree Convenience Store.

#### B. Is your project an expansion of existing work or is it new construction? Explain.

This project is part of an ongoing environmental investigation since the discovery of the contaminated water in 1990. The site was selected by owners representatives and DNR personnel as being the logical location for an alternate water supply. The proposed site is upgradient of the contamination site.

#### C. When did you start to develop a plan for your project?

Development of construction plans began in the spring of 2004. The preliminary construction plans re a result of ongoing environmental investigation since 1990.

#### D. Explain why the project must be located in or adjacent to wetlands.

An alternate water supply must be located up gradient of the ground water contamination source. All areas up gradient of the contamination site have been identified as wetlands.

### II Alternatives (your analysis should address the following questions).

#### A. How could you redesign or reduce your project to avoid the wetland, and still meet your basic project purpose?

In lieu of installing alternate water supply wells, the project area could be served with municipal water from the City of Wisconsin Rapids. A watermain extension to the Wisconsin Rapids City limits would be required.

B. Other sites

1. What geographical area(s) was searched for alternative sites?

Areas up gradient of the contaminate source.

2. Were other sites considered?

Yes, a site south of CTH P was a possible site. Site also classified as a wetland.

3. Have you sold any lands in recent years that are located within the vicinity of the project? If so, why were they unsuitable for the project?

No

- C. For each of the alternatives you identified, explain why you eliminated the alternative from consideration (include cost comparisons, logistical, technological, and any other reasons).

Alternative A was eliminated based on high construction cost and public resistance to annexing into the City of Wisconsin Rapids.

Alternative B was eliminated based on high construction cost and potential impacts of wetlands located in surrounding areas.

- D. What are the consequences of not building the project? (include social and economic consequences):

The consequences of not building the project are continued hardships placed on private residents due to contaminated drinking water. The health of the affected residents will be improved by providing a safe alternative water supply.

If you have chosen an alternative that would result in wetland impacts:

- E. Summarize why your alternative was selected.

The project site was selected based on the fact that it is up gradient to the source of contamination. All property up gradient and adjacent to the project site contain wetlands.

- F. Explain what you plan to do to minimize adverse effects on the wetlands during your project (e.g. erosion control, best management practices, setbacks, etc.).

Adverse effects of the wetlands will be minimized by constructing only the well and associated piping. The building required for the pressure tank will be located east of STH 34 and will not adversely affect any wetland.

PLEASE COMPLETE BOTH PAGES 1 & 2 OF THIS APPLICATION. PRINT OR TYPE. The Department requires use of this form for any application filed pursuant to Chapter 30, Wis. Stats. The Department will not consider your application unless you complete and submit this application form. Personally identifiable information on this form will not be used for any other purpose, but it must be made available to requesters under Wisconsin's open records law [s. 19.31-19.39, Wis. Stats.].

1. Applicant(Individual or corporate name) <b>INERBANS BRAR</b>		Agent/Contractor(firm name) <b>CENTRAL WISCONSIN ENGINEERS</b>	
Address <b>1809 SAVANNAH WAY</b>		Address <b>5707 SCHOFIELD AVENUE</b>	
City, State, Zip Code <b>WAUNAKEE WI 53597</b>	Fire Number	City, State, Zip Code <b>WESTON WI 54476</b>	
Telephone No. (Include area code) <b>680.635.7139</b>	Tax Parcel Number	Telephone No. (Include area code) <b>715.359.9400</b>	

3. If applicant is not owner of the property where the proposed activity will be conducted, provide name and address of owner and include letter of authorization from owner. Owner must be the applicant or co-applicant for structure, diversion and stream realignment activities.

Owner's Name <b>INDERBANS BRAR</b>	Address <b>1809 SAVANNAH WAY</b>	City, State, Zip Code <b>WAUNAKEE WI 53597</b>
---------------------------------------	-------------------------------------	---

4. Is the applicant a business?  Yes  No  
 If YES, is the permit or approval you are applying for necessary for you to conduct this business in the State of Wisconsin?  
 Yes  No  
 If YES, please explain why (attach additional sheets if necessary):

5. Project Location **STH 34, NW quadrant at the intersection of**  
 Address **CTH P**  
 Village/City/Town **TOWN OF RUDOLPH**  
 Fire Number \_\_\_\_\_ Tax Parcel Number \_\_\_\_\_  
 Waterway **N/A**  
 County \_\_\_\_\_  
 Govt. Lot \_\_\_\_\_ OR **SW 1/4, SW 1/4**, of Section **20**,  
 Township **23** North, Range **6** (East) (West)

6. Adjoining Riparian (Neighboring Waterfront Property Owner) Information

Name of Riparian #1 <b>Christine &amp; James Bushmaker</b>	Address <b>5641 STH 34</b>	City, State, Zip Code <b>Rudolph WI 54475</b>
Name of Riparian #2	Address	City, State, Zip Code

7. Project Information (Attach additional sheets if necessary)

(a) Describe proposed activity (include how this project will be constructed) **Construction of one low capacity water well. Construction will include installation of a gravel access drive.**

(b) Purpose, need and intended use of project **Construction of the low capacity well will create an alternate water supply for residential homes affected by contaminated ground water**

(c) I have applied for or received permits from the following agencies: (Check all that apply)  
 Municipal  County  Wis. DNR  Corps of Engineers

(d) Date activity will begin if permit is issued **Sept 1, 2005**; be completed: **October 1, 2005**

(e) Is any portion of the requested project now complete?  Yes  No  
 If yes, identify the completed portion on the enclosed drawings and indicate here the date activity was completed:

I hereby certify that the information contained herein is true and accurate. I also certify that I am entitled to apply for a permit, or that I am the duly authorized representative or agent of an applicant who is entitled to apply for a permit. Any inaccurate information submitted may result in permit revocation, the imposition of a forfeiture(s) and requirement of restoration.

Signature of Applicant(s) or Duly Authorized Agent	Date Signed <b>August 24, 2005</b>
--	---------------------------------------

<b>LEAVE BLANK FOR RECEIVING AGENCY USE ONLY</b>		
Corps of Engineers Process No.	Wisconsin DNR File No.	
Received By	Date Received	Date Application Was Complete

<p>Location Sketch (Indicate scale)                  Show route to project site; include nearest main road and crossroad.</p> <p>N                  1" = _____ ft.</p> <p>Fire Number _____</p>	<p>Drawings of proposed activity                  should be prepared in accordance                  with sample drawing.                  Proposed Materials</p>
---	--

Project Plans (Include top view and typical cross sections. Clearly identify features and dimensions or indicate scale.)  
 Use additional sheets if necessary.

<p>Top View</p>	<p>N                  1" = _____ ft.</p>
-----------------	--

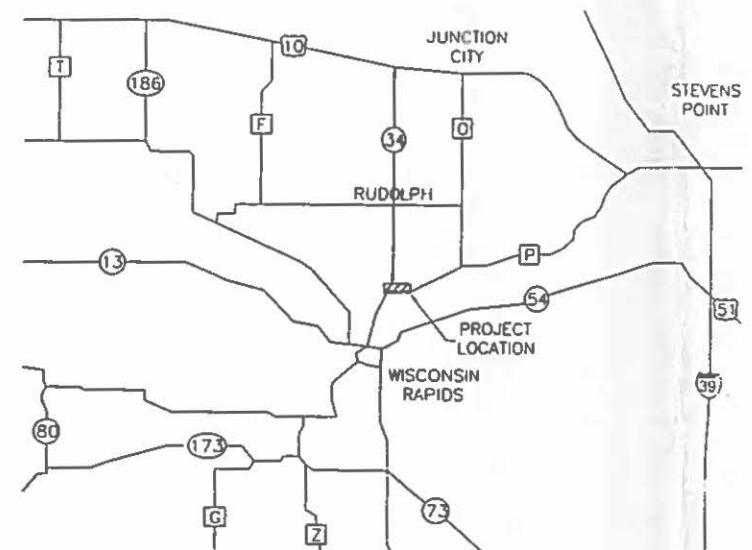
<p>Cross Section</p>	
----------------------	--



# GREENFIELD AVENUE

## NON-COMMUNITY WATER SUPPLY IMPROVEMENT PROJECT TOWN OF RUDOLPH, WOOD COUNTY, WI

**WEA**  
CENTRAL  
WISCONSIN  
ENGINEERS &  
ARCHITECTS  
5707 SCHOFIELD AVENUE  
WESTON, WISCONSIN  
54476  
PHONE: (715) 359-9400  
FAX: (715) 355-4199  
general@cwengineers.com  
http://www.cwengineers.com



### INDEX:

TITLE SHEET	_____	1 OF 9
GENERAL NOTES, LEGEND, AND DETAIL SHEET	_____	2-4 OF 9
PLAN AND PROFILE SHEETS	_____	5-10 OF 9

PROJECT:  
GREENFIELD AVENUE  
NON-COMMUNITY WATER SUPPLY  
IMPROVEMENT PROJECT  
TOWN OF RUDOLPH, WOOD COUNTY, WI

REVISIONS:

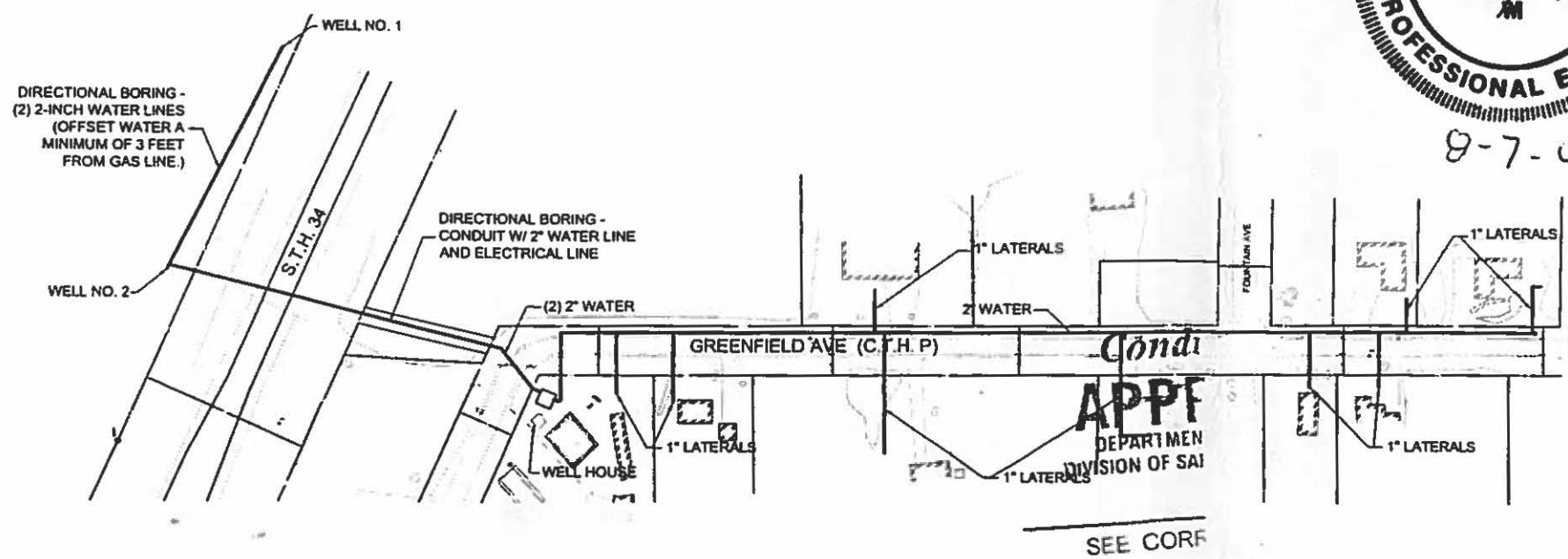


8-7-06



CENTRAL WISCONSIN ENGINEERS  
AND ARCHITECTS

5707 SCHOFIELD AVENUE  
WESTON, WI 54476



DRAWN BY:  
DRF  
CHECKED BY:  
D.J.G.  
APPROVED BY:  
D.J.G.  
DATE:  
07-19-06  
SHEET:  
1 OF 9

## GENERAL NOTES

- 1- NO TREES (AND/OR SHRUBS) SHALL BE REMOVED WITHOUT APPROVAL OF THE ENGINEER.
- 2- DISTURBED AREAS WITHIN PROJECT LIMITS ARE TO BE RESTORED WITH 4" MIN. SALVAGED SCREENED TOPSOIL, SEED, FERTILIZER, AND MULCH OR EROSION MAT AS DIRECTED BY THE ENGINEER. DISTURBED AREAS SHALL BE RESTORED TO A BETTER/OR EQUAL CONDITION THAT EXISTED PRIOR TO CONSTRUCTION.
- 3- ALL EXISTING UTILITIES ARE SHOWN BASED ON FIELD DATA AND INFORMATION RECEIVED FROM THE RESPECTIVE UTILITY. IT IS THE CONTRACTORS RESPONSIBILITY TO VERIFY ALL EXISTING UTILITIES PRIOR TO ANY EXCAVATION. CONTRACTOR SHALL BE RESPONSIBLE FOR RESOLVING ALL UTILITY CONFLICTS.
- 4- ALL EXISTING PAVEMENT TO BE SAWCUT PRIOR TO REPLACEMENT. STREETS REPLACED WITH 6" C.A.B.C. AND MIN. 2" H.M.A.
- 5- THE CONTRACTOR SHALL BE RESPONSIBLE FOR ALL EROSION CONTROL MEASURES TAKEN TO PREVENT SOIL FROM LEAVING THE PROJECT SITE, PER WDNR BEST MANAGEMENT PRACTICES. EROSION CONTROL DEVICES SHALL BE IN PLACE PRIOR TO CONSTRUCTION. EROSION CONTROL DEVICES SHOWN ON THE PLAN ARE FOR GUIDANCE AND MAY NEED TO BE REVISED IN THE FIELD. THE CONTRACTOR SHALL BE RESPONSIBLE FOR CLEAN-UP OF SEDIMENTATION DUE TO THE CONSTRUCTION. CONTRACTOR SHALL MAINTAIN AND INSPECT EROSION CONTROL ON A WEEKLY BASIS.
- 6- THE LATERAL LOCATIONS INDICATED ON THE PLAN ARE ESTIMATED. EXACT LOCATIONS SHALL BE DETERMINED IN THE FIELD.
- 7- ACCESS FOR LOCAL RESIDENTS AND BUSINESSES MUST BE PROVIDED AT ALL TIMES DURING CONSTRUCTION.
- 8- CONTRACTOR SHALL DEVELOP AND PROVIDE TRAFFIC CONTROL PLAN FOR CONSTRUCTION OPERATIONS. PLAN SHALL BE REVIEWED AND APPROVED BY ENGINEER.
- 9- ALL EXISTING DRIVEWAYS TO BE REPLACED IN KIND.
- 10- CONTRACTOR IS RESPONSIBLE FOR ALL TRAFFIC CONTROL DEVICES.

### WATER SCHEDULE

- 1 CONNECT TO EXISTING WELL
- 2 2-INCH WATER LINE AND ELECTRICAL CONDUIT.
- 3 2" INSULATED WATER LINE AND ELECTRICAL CONDUIT IN 8" DIRECTIONAL BORE CASING.
- 4 (2) 2" INSULATED WATER LINES AND ELECTRICAL CONDUIT IN 12" DIRECTIONAL BORE CASING.
- 5 (2) 2" WATER LINES AND ELECTRICAL CONDUIT.
- 6 90° BEND
- 7 45° BEND
- 8 22.5° BEND
- 9 ABANDON EXISTING WELL
- 10 2"x2"x1" TEE
- 11 FLUSH VALVE
- 12 4' X 8' X 4" INSULATION
- 13 SILT FENCE
- 14 EROSION BAILS
- 15 REPLACE PAVEMENT IN KIND
- 16 REMOVE AND REPLACE EXISTING CULVERT
- 17 ADD APRON ENDWALL
- 18 (2) 2" WATER LINE
- 19 2" WATER LINE

## UTILITIES

CHARTER COMMUNICATIONS  
321 8TH SOUTH STREET  
WISCONSIN RAPIDS, WI 54494  
PHONE: 1-800-581-0081

ALLIENT ENERGY  
1-800-862-6261

WE ENERGIES  
1921 8TH SOUTH STREET  
WISCONSIN RAPIDS, WI 54494  
PHONE: (715) 421-7227  
LISA MAYNE  
NATURAL GAS

WOOD COUNTY  
TELEVISION CO.  
440 E GRAND AVE  
WISCONSIN RAPIDS, WI  
54494  
PHONE: (715) 421-8111



Toll Free (800) 242-8511  
Milwaukee Area (414) 258-1181  
Hearing Impaired TDD (800) 542-2289  
[www.DiggersHotline.com](http://www.DiggersHotline.com)

### MAPPING & UTILITIES

THE BASE MAPPING AND UTILITIES SHOWN ON THIS PLAN, ARE IN PART, COMPILED FROM INFORMATION FURNISHED BY OTHERS. CENTRAL WISCONSIN ENGINEERS & ARCHITECTS, INC. WILL NOT BE RESPONSIBLE FOR ERRORS OR OMISSIONS WHICH HAVE BEEN INCORPORATED INTO THIS DOCUMENT AS A RESULT. ALL UTILITIES SHALL BE FIELD LOCATED PRIOR TO EXCAVATION.

### HORIZONTAL & VERTICAL CONTROL

THE HORIZONTAL & VERTICAL CONTROL FOR THIS SURVEY IS BASED ON A LOCAL ASSUMED DATUM AND IS NOT REFERENCED TO ANY CITY, COUNTY, OR STATE CONTROL.

### STANDARD ABBREVIATIONS

AGG.	AGGREGATE
BIT.	BITUMINOUS
B.M.	BENCH MARK
C.	CENTER LINE
C.O.	CLEAN OUT
CONC.	CONCRETE
CLR.	CLEAR, CLEARANCE
CMU	CONCRETE MASONRY UNIT
CPM	CUBIC FEET PER MINUTE
DIA.	DIAMETER
ELEV.	ELEVATION
EXC.	EXCAVATION
FPS	FEET PER SECOND
FTG	FOOTING
FDN	FOUNDATION
GPM	GALLONS PER MINUTE
GA	GAUGE
GR	GRAVEL
GRD	GROUND
HYD.	HYDRANT
INL.	INLET
INV	INVERT
I.P.	IRON PIPE, PIN
JT	JOINT
JCT	JUNCTION
LIN.FT.	LINEAR FOOT (FEET)
M	METER
M.H.	MANHOLE
ML	MATCH LINE
MATL	MATERIAL
MAX	MAXIMUM
MIN	MINIMUM
NAT.	NATURAL
NO.	NUMBER
N.C.	NOT IN CONTRACT
O.C.	OUTSIDE CENTER
O.D.	OUTSIDE DIAMETER
PAVT	PAVEMENT
PERF.	PERFORATED
PROP.	PROPOSED
P.V.C.	POLYVINYL CHLORIDE
P.S.I.	POUNDS PER SQUARE INCH
PL	PROPERTY LINE
R	RADIUS
REINF.	REINFORCEMENT, REINFORCING
REQD.	REQUIRED
RS	REINFORCING STEEL
R.W.	RETAINING WALL
RD	ROAD
SALV	SALVAGED
SAN	SANITARY SEWER
SCH.	SCHEDULE
SEC	SECTION
SW	SIDEWALK
SPCG	SPACING
SPEC'S	SPECIFICATIONS
SQ.FT.	SQUARE FOOT (FEET)
SQ.YD.	SQUARE YARD (YARDS)
STD	STANDARD
STR	STRUCTURE, STRUCTURAL
SURF	SURFACE
TEL	TELEPHONE
TOW	TOP OF WALL
TYP	TYPICAL
VERT	VERTICAL
VOL.	VOLUME
W	WITH
WV	WATER VALVE
WWF	WELDED WIRE FABRIC
YD	YARD (YARDS)

### LEGEND

#### PROPOSED FEATURES

—	PROPOSED WATERMAIN
—	HYDRANT
—	WATER VALVE
—	CURB STOP
□	DITCH BALE CHECK

#### EXISTING FEATURES

—	EXISTING ROAD
—	WATER LINE
—	SANITARY SEWER LINE
—	STORM SEWER LINE
—	UTILITY POLE WITH GUY WIRE
—	WELL
—	MAN HOLE
—	LIGHT POLE & STANDARD
—	TELEPHONE JUNCTION BOX
—	ELECTRIC BOX
—	OVERHEAD ELECTRIC
—	BURIED TELEPHONE
—	BURIED ELECTRIC
—	GAS LINE
—	UNDERGROUND FIBEROPTIC
—	FENCE
—	CONTOUR LINE
—	EDGE OF EX. ASPH PAVT
—	EXISTING RIGHT OF WAY
—	SOIL BORING
—	DECIDUOUS TREE
—	EVERGREEN TREE
—	3/4" REBAR FOUND
—	SCRIBED X
—	IRON PIPE
—	IRON BAR W/CAP FOUND
—	3/4" REBAR SET
—	RAILROAD SPIKE
—	SET 1-1/4" x 18" IRON PIPE
—	CP6
—	CONTROL POINT

### CONTROL POINT DATA

CP 1  
3/4" REBAR WITH CAP ON WEST  
PROPERTY LINE ON BANK PROPERTY  
N=468,026.50  
E=733,060.93  
ELEV = 100.00

CP 2  
IRON PIPE WITH CAP LOCATED AT  
NORTHEAST PROPERTY CORNER STA. 10+00  
N=468,072.89  
E=733,284.81  
ELEV = 99.11

CP 4  
3/4" REBAR WITH CAP LOCATED  
NEAR EAST PROPERTY LINE STA. 13+93  
N=468,129.11  
E=733,676.60  
ELEV = 99.38

CP 5  
3/4" REBAR WITH CAP LOCATED  
RIGHT SHOULDER AT STA. 17+15  
N=468,109.11  
E=734,007.51  
ELEV = 99.58

CP 6  
3/4" REBAR WITH CAP LOCATED  
RIGHT SHOULDER AT STA. 20+50  
N=468,109.82  
E=734,341.92  
ELEV = 100.69



CENTRAL  
WISCONSIN  
ENGINEERS &  
ARCHITECTS

5707 SCHOFIELD AVENUE  
WESTON, WISCONSIN  
54476

PHONE: (715) 359-9400  
FAX: (715) 355-4199

general@cwengineers.com  
<http://www.cwengineers.com>

PROJECT:

GREENFIELD AVENUE  
NON-COMMUNITY WATER SUPPLY  
IMPROVEMENT PROJECT  
TOWN OF RUDOLPH, WOOD COUNTY, WI

REVISIONS:

GENERAL NOTES/LEGEND

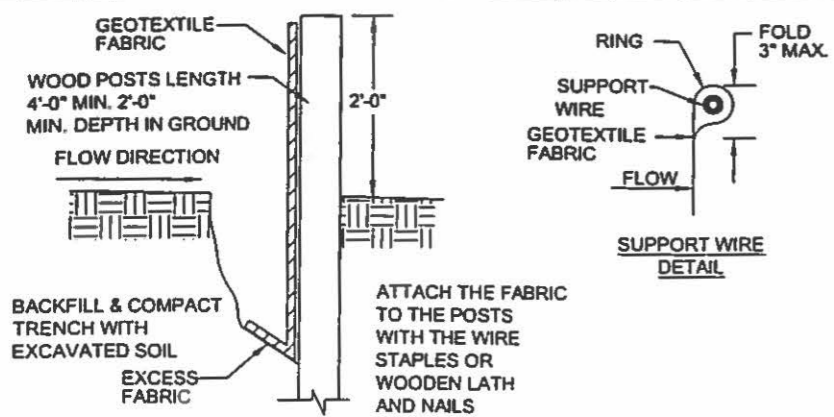
DRAWN BY:  
DRF

CHECKED BY:  
D.J.G.

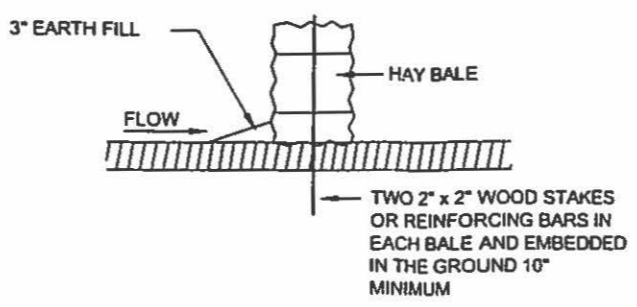
APPROVED BY:  
D.J.G.

DATE:  
07-19-06

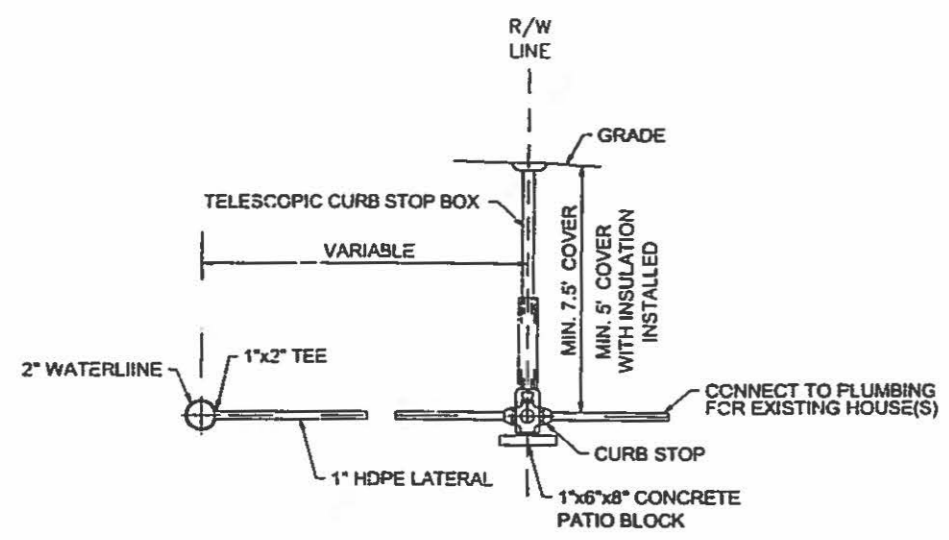
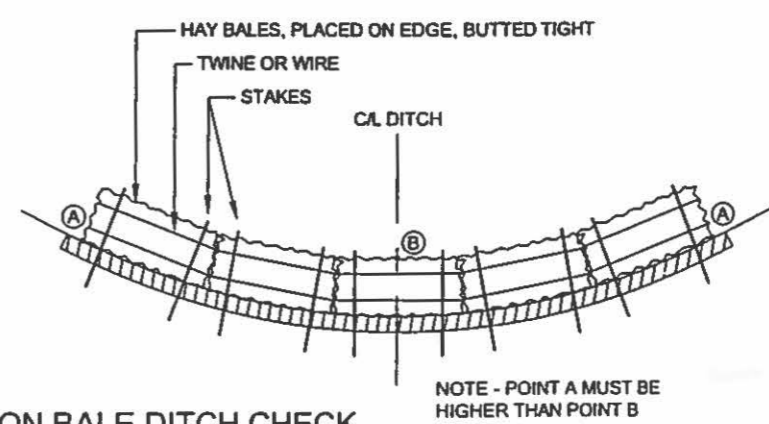
SHEET:  
2 OF 9



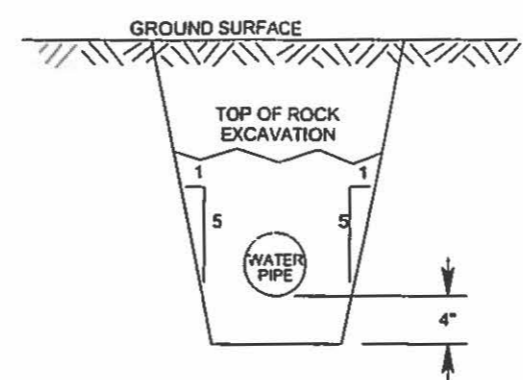
1 SILT FENCE



2 EROSION BALE DITCH CHECK

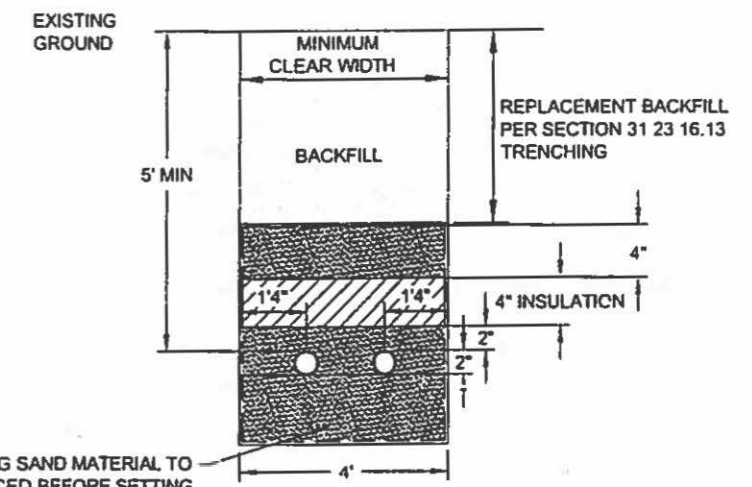


3 TYPICAL WATER SERVICE CONNECTION



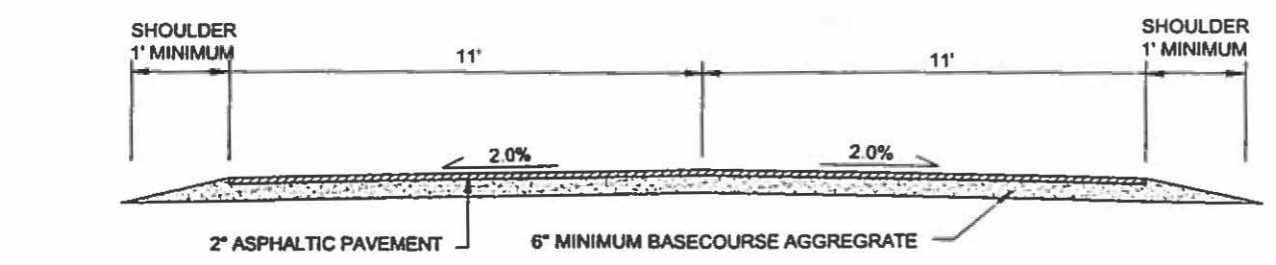
ROCK EXCAVATION TRENCH CROSS-SECTION

NOTE:  
THE TRENCH WIDTH IS TO BE TAKEN AS THE HORIZONTAL DISTANCE AT THE OUTSIDE TOP OF THE PIPE.  
THE MAXIMUM ALLOWABLE WIDTH SHALL BE:  
3.0' WIDER THAN THE OUTSIDE DIAMETER FOR 36" OR LARGER PIPE.  
2.0' WIDER THAN THE OUTSIDE DIAMETER FOR PIPES LESS THAN 36" DIAMETER.

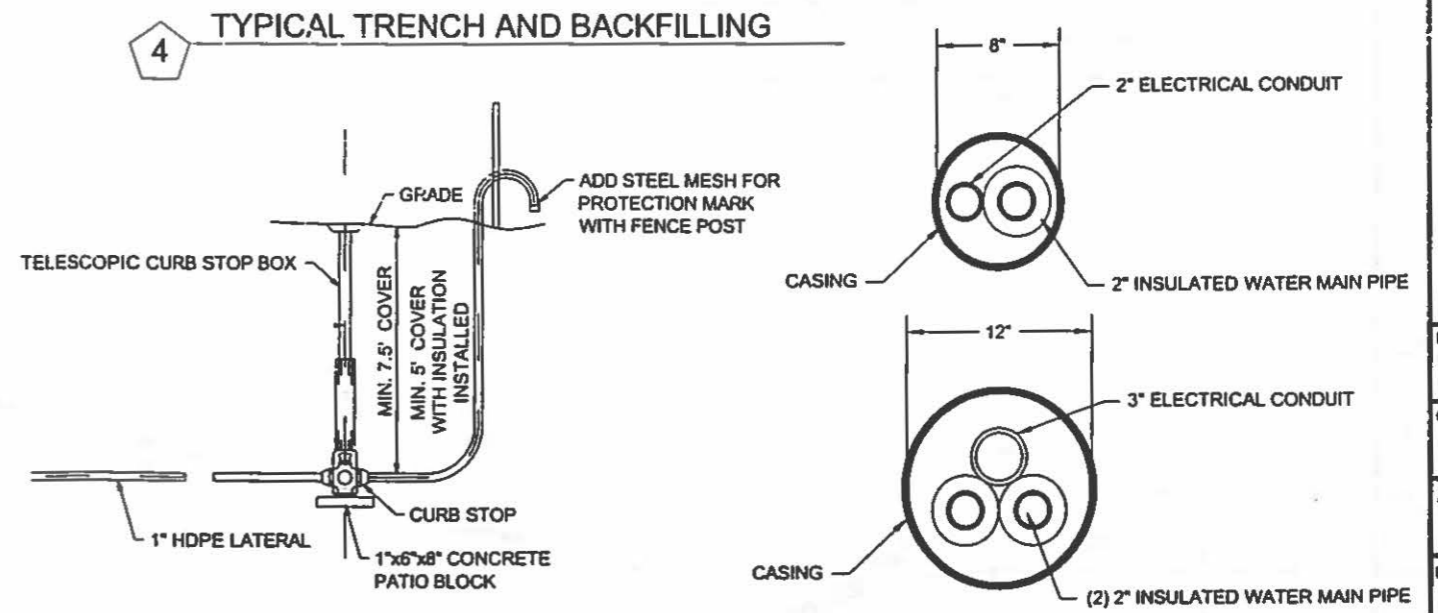


BEDDING SAND MATERIAL TO BE PLACED BEFORE SETTING PIPE. 4" MIN. UNDER BARREL, 4" MIN. UNDER BELL.

CLASS "B" PIPE BEDDING  
(WHEN APPROVED BY THE ENGINEER)  
(IN WRITING)

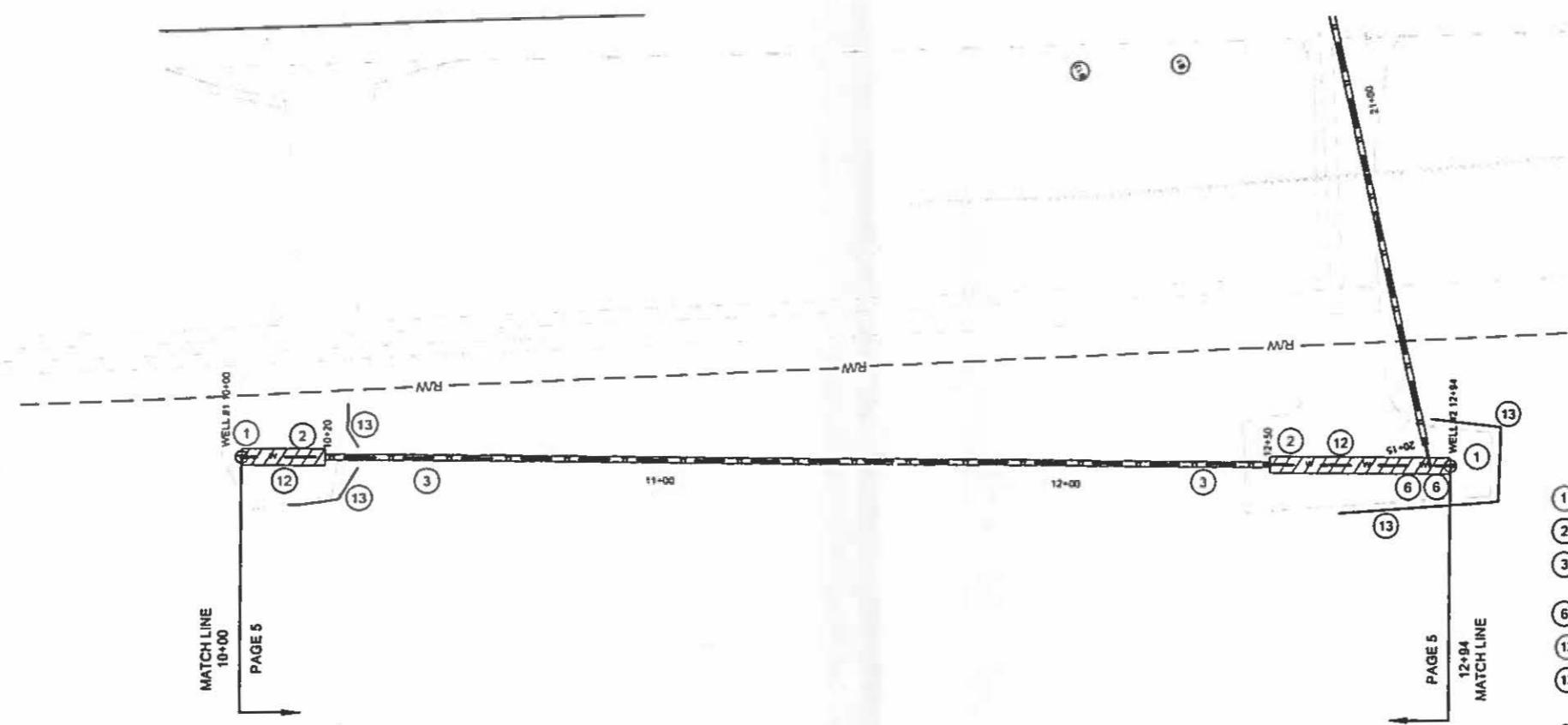
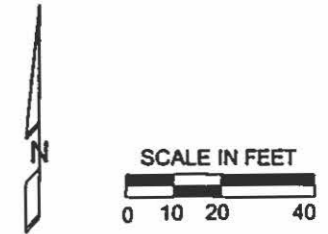


5 TYPICAL STREET SECTION



6 FLUSH VALVE DETAIL

7 DIRECTIONAL BORE DETAIL

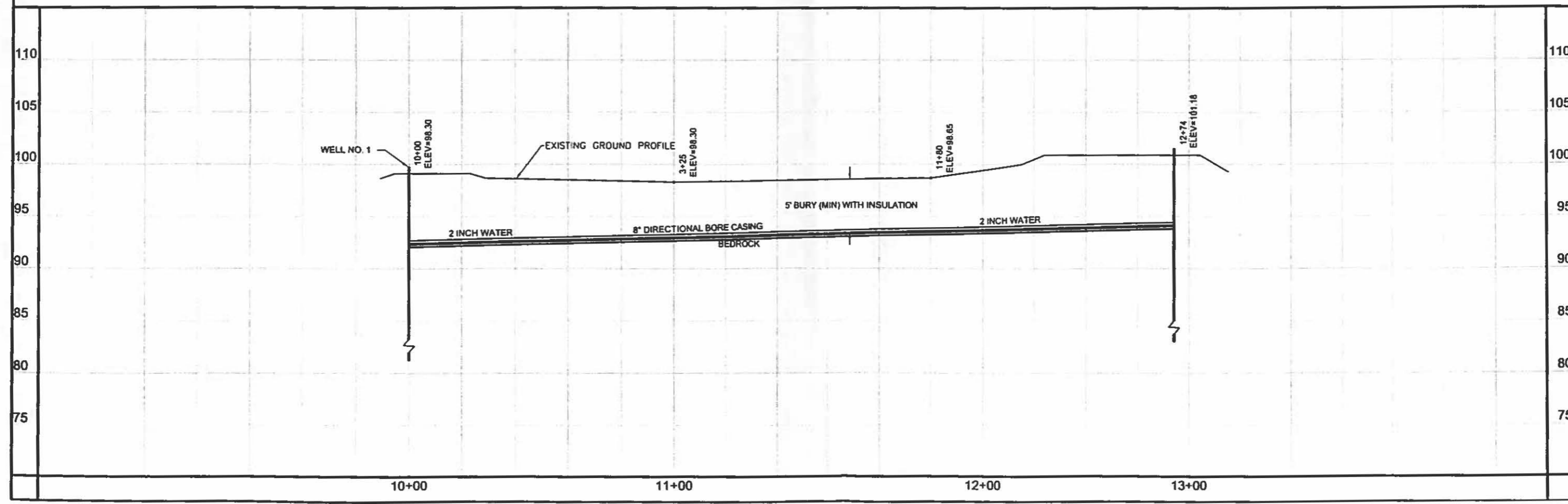


**WATER SCHEDULE**

① CONNECT TO EXISTING WELL	2 EACH
② 2-INCH WATER LINE AND ELECTRICAL CONDUIT	64 L.F.
③ 2" INSULATED WATER LINE AND ELECTRICAL CONDUIT IN 8" DIRECTIONAL BORE CASING	230 L.F.
⑥ 90° BEND	2 EACH
⑫ 4' X 8' X 4" INSULATION	64 L.F.
⑬ SILT FENCE	105 L.F.

SOIL BORINGS: B1, B2, B11, B12, B13

PROJECT:  
**GREENFIELD AVENUE  
 NON-COMMUNITY WATER SUPPLY  
 IMPROVEMENT PROJECT**  
 TOWN OF RUDOLPH, WOOD COUNTY, WI



REVISIONS:

**PLAN AND PROFILE**

DRAWN BY:  
 DRF

CHECKED BY:  
 D.J.G.

APPROVED BY:  
 D.J.G.

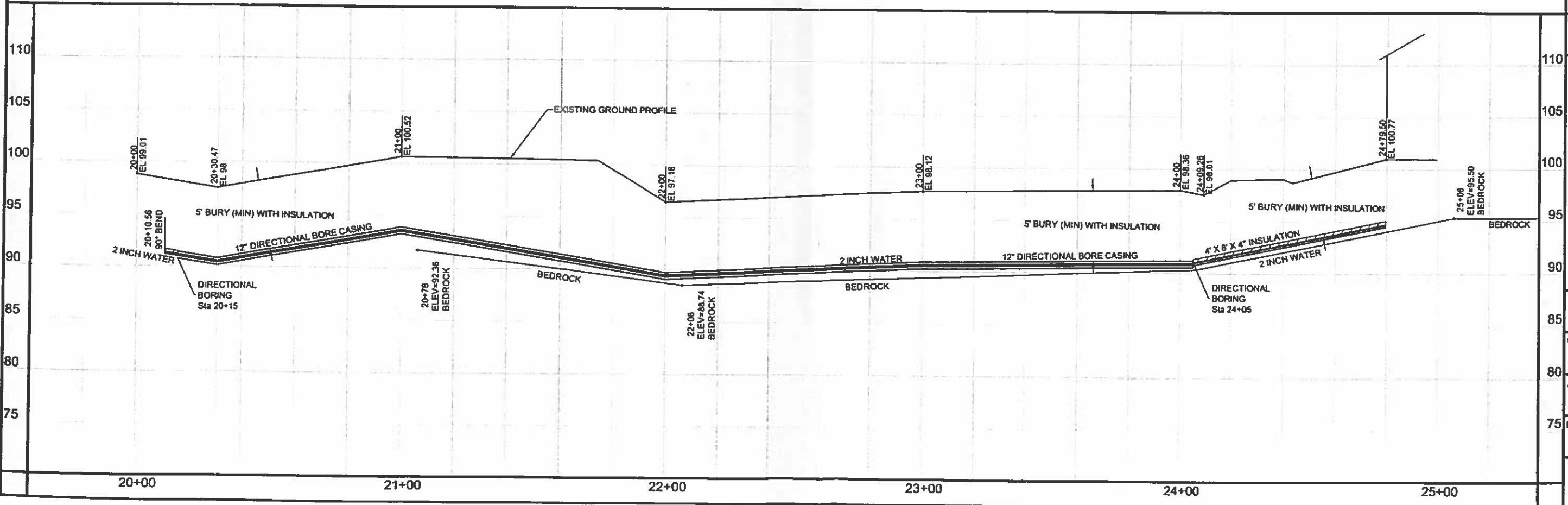
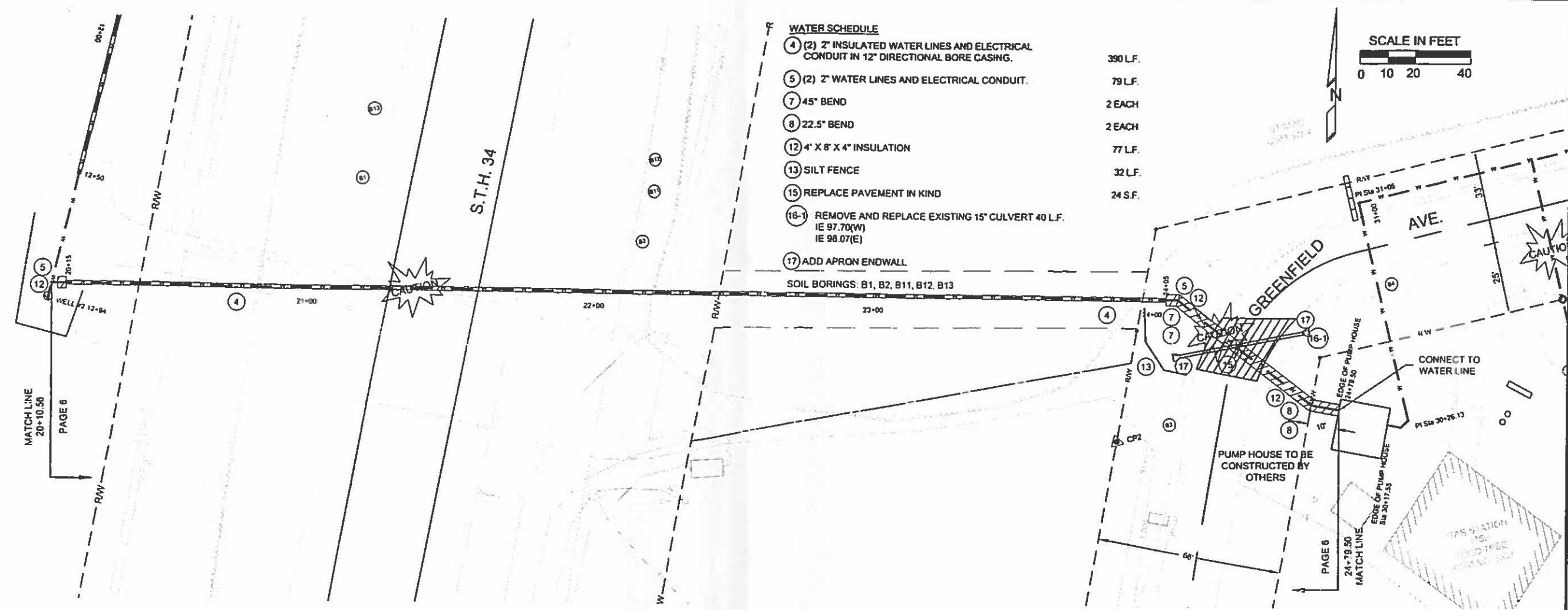
DATE:  
 07-19-06

SHEET:  
 5 OF 9



- WATER SCHEDULE**
- ④ (2) 2" INSULATED WATER LINES AND ELECTRICAL CONDUIT IN 12" DIRECTIONAL BORE CASING. 390 L.F.
  - ⑤ (2) 2" WATER LINES AND ELECTRICAL CONDUIT. 79 L.F.
  - ⑦ 45° BEND 2 EACH
  - ⑧ 22.5° BEND 2 EACH
  - ⑫ 4" X 8" X 4" INSULATION 77 L.F.
  - ⑬ SILT FENCE 32 L.F.
  - ⑮ REPLACE PAVEMENT IN KIND 24 S.F.
  - ⑯-1 REMOVE AND REPLACE EXISTING 15" CULVERT 40 L.F.  
 IE 97.70(W)  
 IE 98.07(E)
  - ⑰ ADD APRON ENDWALL

SOIL BORINGS: B1, B2, B11, B12, B13



REVISIONS:

**PLAN AND PROFILE**

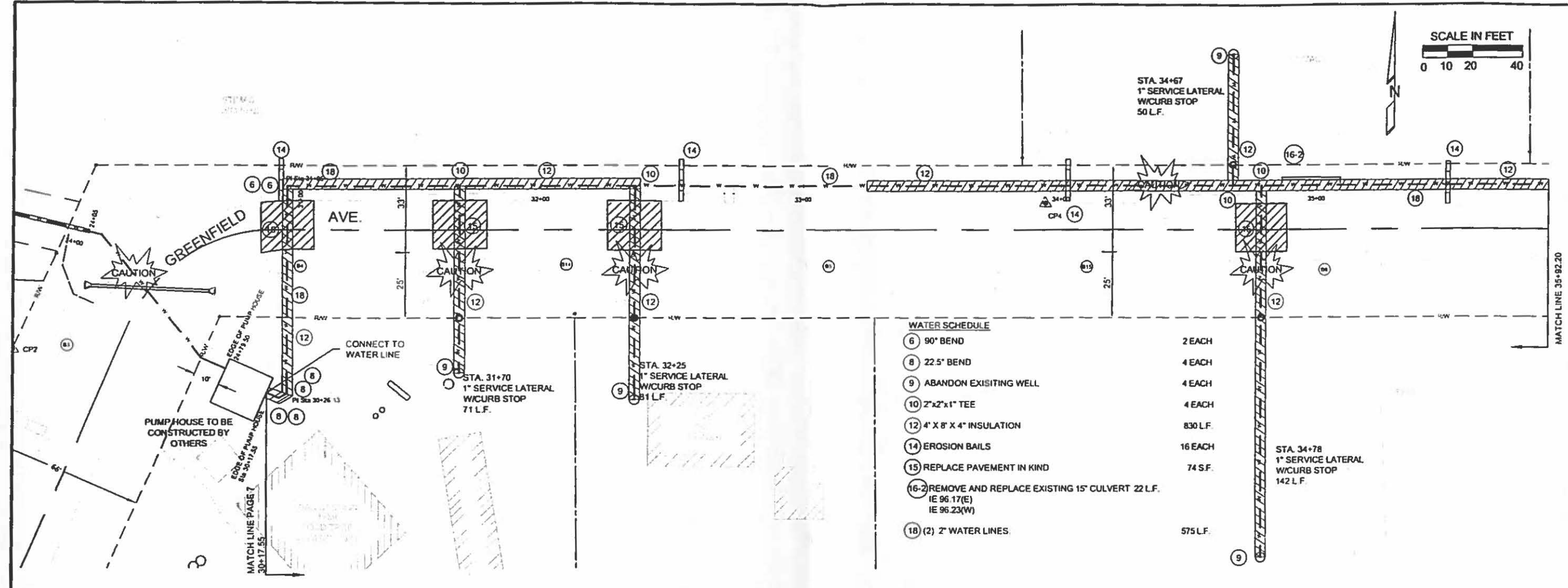
DRAWN BY:  
 DRF

CHECKED BY:  
 D.J.G.

APPROVED BY:  
 D.J.G.

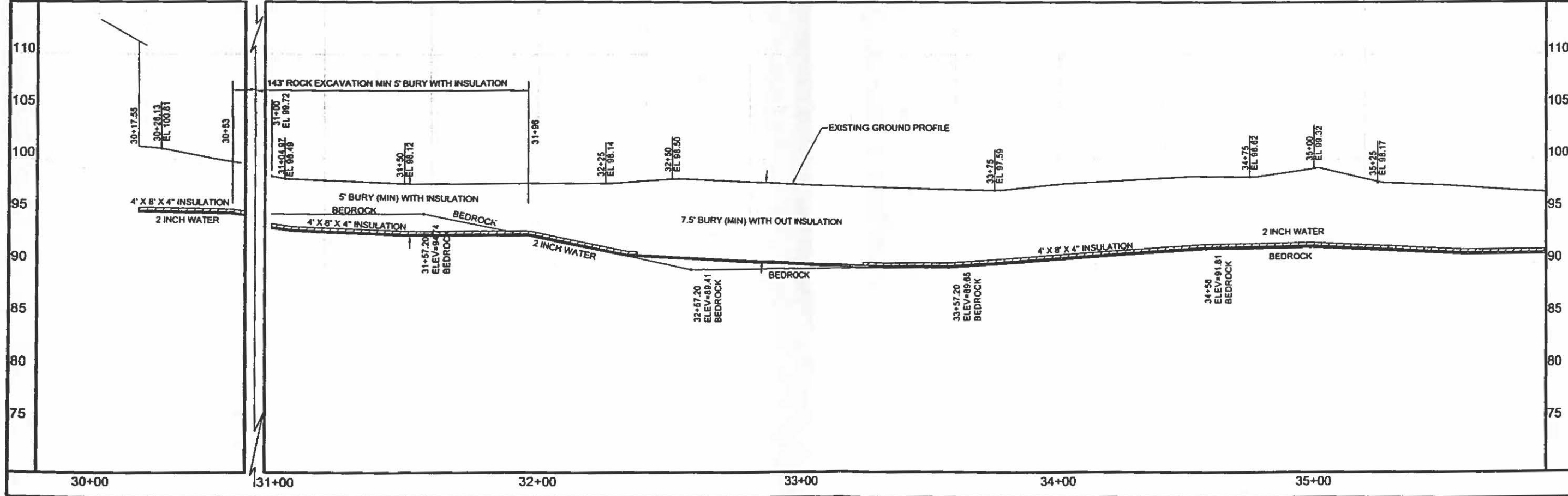
DATE:  
 07-19-06

SHEET:  
 6 OF 9



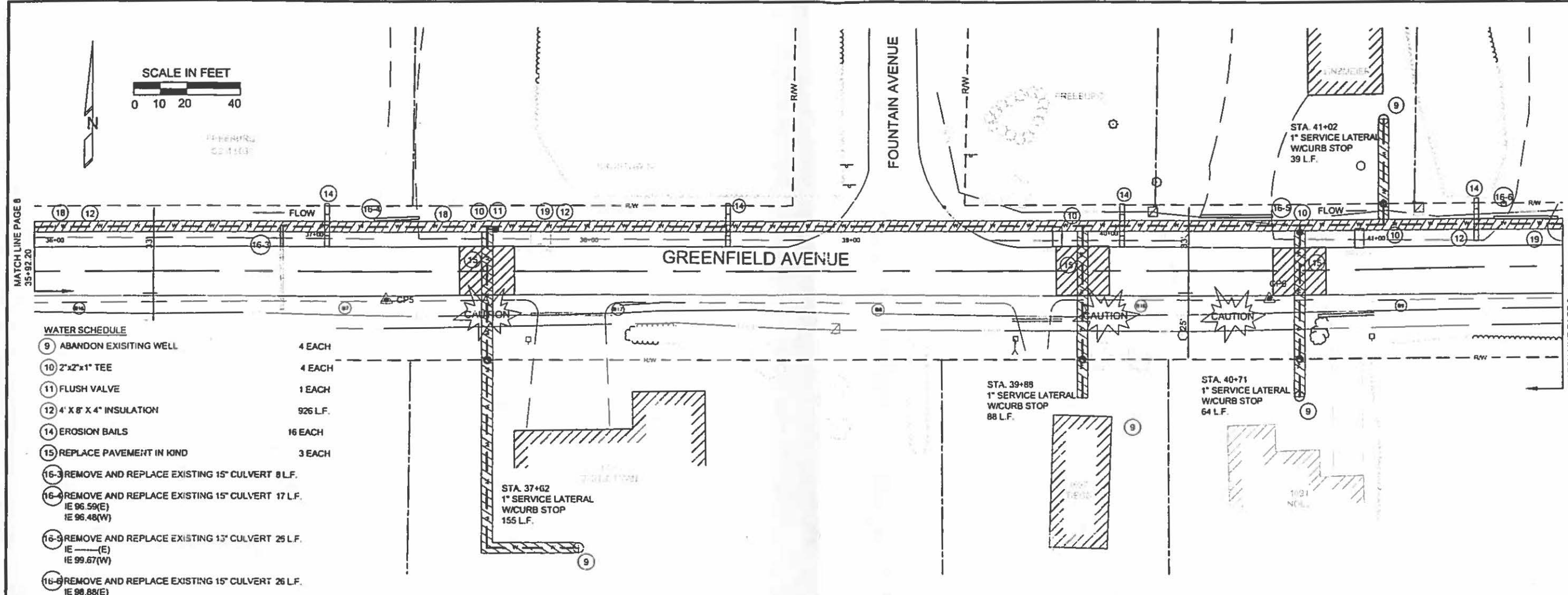
**WATER SCHEDULE**

6	90° BEND	2 EACH
8	22.5° BEND	4 EACH
9	ABANDON EXISTING WELL	4 EACH
10	2"x2"x1" TEE	4 EACH
12	4' X 8' X 4" INSULATION	830 L.F.
14	EROSION BAILS	16 EACH
15	REPLACE PAVEMENT IN KIND	74 S.F.
16-2	REMOVE AND REPLACE EXISTING 15' CULVERT 1E 96.17(E) 1E 96.23(W)	22 L.F.
18	(2) 2" WATER LINES	575 L.F.



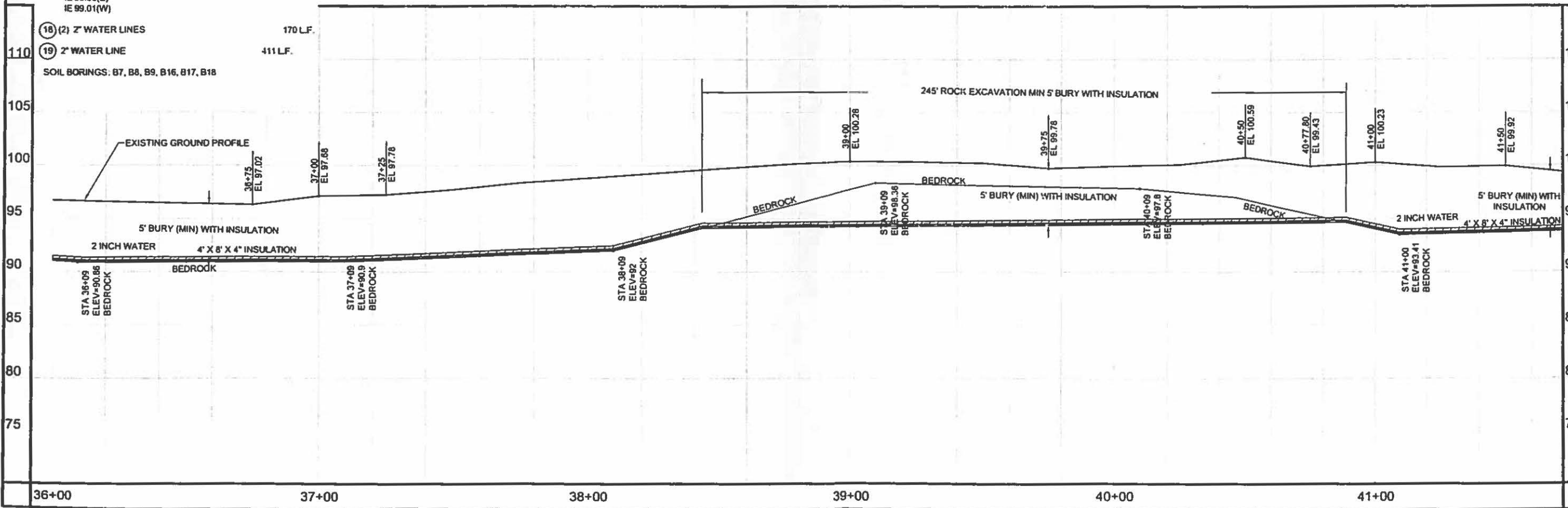
REVISIONS:

DRAWN BY:	DRF
CHECKED BY:	D.J.G.
APPROVED BY:	D.J.G.
DATE:	07-19-06
SHEET:	7 OF 9



- WATER SCHEDULE**
- 9 ABANDON EXISTING WELL 4 EACH
  - 10 2"x2"x1" TEE 4 EACH
  - 11 FLUSH VALVE 1 EACH
  - 12 4' X 8' X 4" INSULATION 926 L.F.
  - 14 EROSION BAILS 16 EACH
  - 15 REPLACE PAVEMENT IN KIND 3 EACH
  - 16-3 REMOVE AND REPLACE EXISTING 15" CULVERT 8 L.F.
  - 16-4 REMOVE AND REPLACE EXISTING 15" CULVERT 17 L.F.  
 IE 96.59(E)  
 IE 96.48(W)
  - 16-5 REMOVE AND REPLACE EXISTING 13" CULVERT 25 L.F.  
 IE (E)  
 IE 99.67(W)
  - 16-6 REMOVE AND REPLACE EXISTING 15" CULVERT 26 L.F.  
 IE 98.88(E)  
 IE 99.01(W)

- 18 (2) 2" WATER LINES 170 L.F.
  - 19 2" WATER LINE 411 L.F.
- SOIL BORINGS: B7, B8, B9, B16, B17, B18



REVISIONS:

**PLAN AND PROFILE**

DRAWN BY: DRF

CHECKED BY: D.J.G.

APPROVED BY: D.J.G.

DATE: 07-19-06

SHEET: 8 OF 9



**CENTRAL  
WISCONSIN  
ENGINEERS &  
ARCHITECTS**

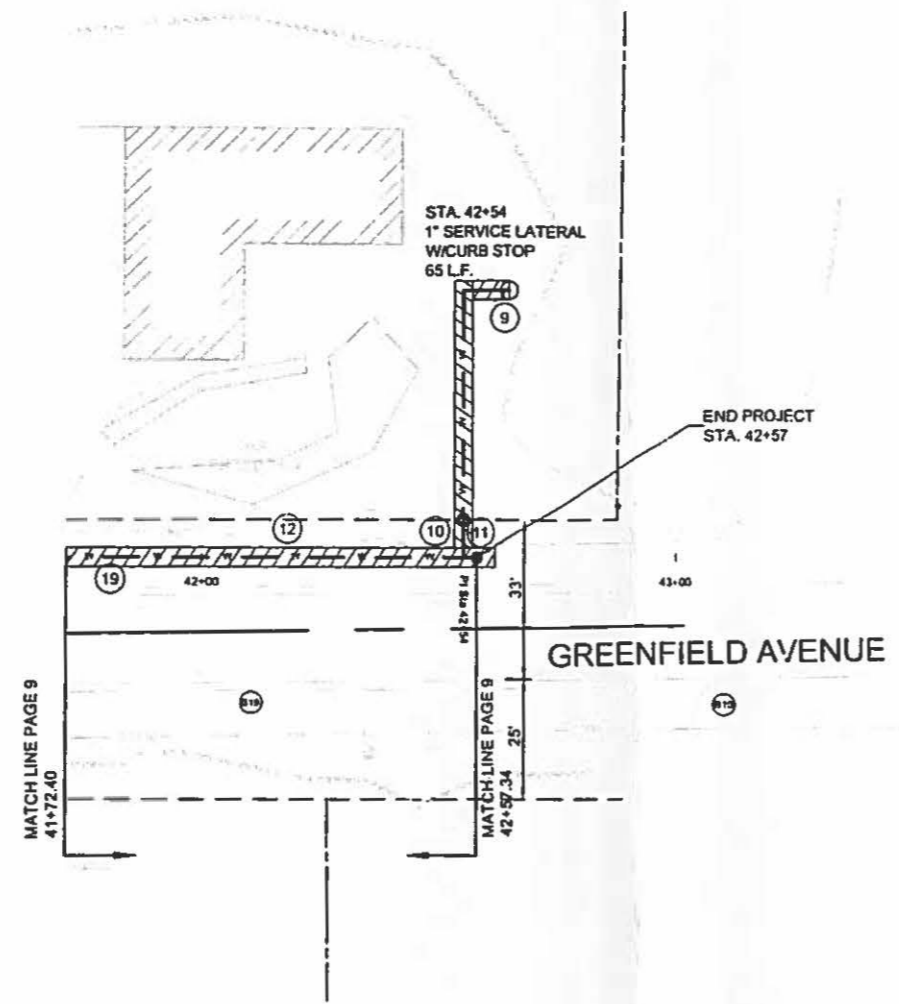
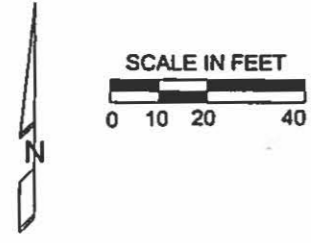
5707 SCHOFIELD AVENUE  
WESTON, WISCONSIN  
54476

PHONE: (715) 356-9400  
FAX: (715) 355-4199

general@cwengineers.com  
http://www.cwengineers.com

PROJECT:

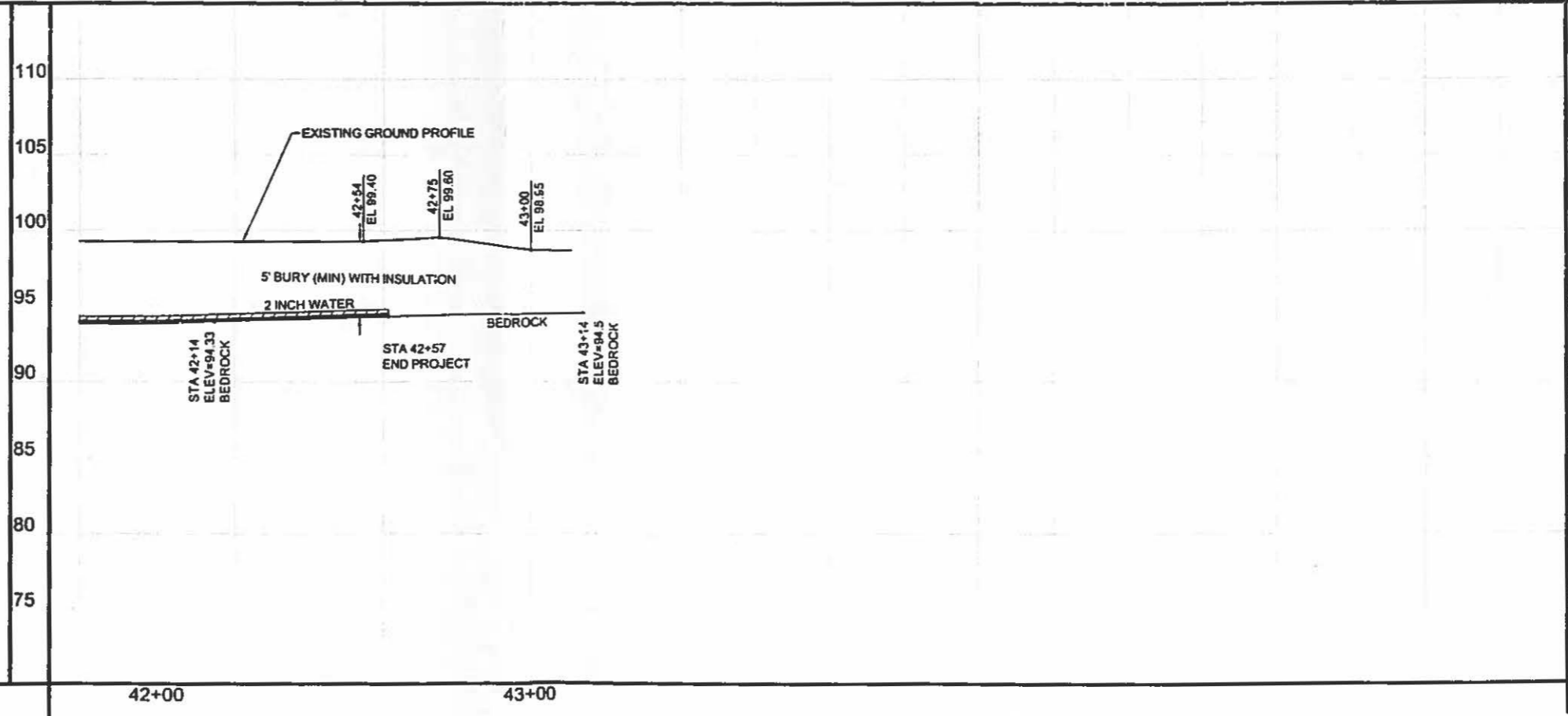
**GREENFIELD AVENUE  
NON-COMMUNITY WATER SUPPLY  
IMPROVEMENT PROJECT  
TOWN OF RUDOLPH, WOOD COUNTY, WI**



**WATER SCHEDULE**

9	ABANDON EXISTING WELL	1 EACH
10	2"x2"x1" TEE	1 EACH
11	FLUSH VALVE	1 EACH
12	4' X 8' X 4" INSULATION	154 L.F.
19	2-INCH WATER LINE	85 L.F.

SOIL BORINGS: B9, B10, B19



REVISIONS:

**PLAN AND PROFILE**

DRAWN BY:  
DRF

CHECKED BY:  
D.J.G.

APPROVED BY:  
D.J.G.

DATE:  
07-19-06

SHEET:  
9 OF 9





**Engineers • Architects • Scientists • Surveyors**

5707 Schofield Avenue  
P.O. Box 107  
Weston, WI 54476-0107  
www.cwengineers.com

Tel 715.359.9400  
Fax 715.355.4199  
Toll-free 800.261.5707  
general@cwengineers.com

---

July 17, 2006

Mr. David Linzmeier  
1690 Greenfield Avenue  
Wisconsin Rapids, WI 54495

Re:           **The Food Tree Well Replacement Project**  
                  Rudolph, Wisconsin  
                  CWEA Project # 3511-0400

Dear Mr. Linzmeier:

This letter is to bring you up to date on the development of the alternative clean water system for homeowners who were impacted by a prior release of petroleum substances from the Food Tree gas station. As a result of the settlement of the lawsuit between a number of those homeowners and Mr. and Mrs. Inderbans Brar, an agreement was reached to provide for two alternative upgradient wells and to provide clean water to your home.

In accordance with the *Settlement Agreement and Release* document filed March 31, 2005, it is understood that you have previously granted consent for the engineer, in this case i.e., Central Wisconsin Engineers & Architects, Inc. (CWEA), to install a lateral water line to your home from the main water line, which will be installed along Greenfield Avenue. The new lateral line will be installed in the approximate location of your existing water supply well. The old drinking water well will be properly abandoned, as required by the Wisconsin Department of Natural Resources (WDNR). The new water supply will be connected to the existing piping system and then tested to ensure that the water quality conforms to the state standards.

Construction work on your lateral water line is expected to take place in approximately mid to late August. We are requesting that each homeowner please notify us so that we can be sure that everyone has received this notification letter and to provide us with a daytime telephone number where he or she can be reached should there be a delay in the construction process or in the event that other issues arise.

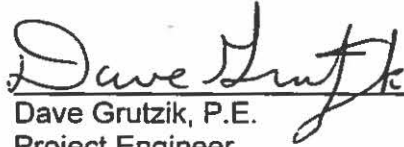
***Therefore, please contact Cindy Zelenka at Central Wisconsin Engineers & Architects, Inc. in one of the following manners with your daytime telephone numbers and with any questions you may have:***

Address:       Central Wisconsin Engineers & Architects, Inc.  
                  5707 Schofield Avenue, P.O. Box 107  
                  Weston, WI 54476-0107

Phone:         (800) 261-5707 or (715) 359-9400  
Fax:            (715) 355-4199  
E-mail:        czelenka@cwengineers.com

Sincerely,

**Central Wisconsin Engineers & Architects, Inc.**

  
\_\_\_\_\_  
Dave Grutzik, P.E.  
Project Engineer

  
\_\_\_\_\_  
Cindy L. Zelenka  
Environmental Specialist

cc: Mr. Eric Brach, Water Supply Specialist, WDNR, 473 Griffith Avenue, Wisconsin Rapids,  
WI 54494-7859  
Mr. Thomas Hvizdak, Remediation and Redevelopment, WDNR, 473 Griffith Avenue,  
Wisconsin Rapids, WI 54494-7859  
Mr. Thomas Riewe, WDNR, P.O. Box 7921, Madison, WI 53707-7921  
Ms. Barb Ingram, WDNR, P.O. Box 7921, Madison, WI 53707-7921  
Mr. Inderbans Brar, 1809 Savannah Way, Waunakee, WI 53597



**Engineers • Architects • Scientists • Surveyors**

5707 Schofield Avenue  
P.O. Box 107  
Weston, WI 54476-0107  
www.cwengineers.com

Tel 715.359.9400  
Fax 715.355.4199  
Toll-free 800.261.5707  
general@cwengineers.com

July 17, 2006

Mr. Mahendra Batia  
1759 Greenfield Avenue  
Wisconsin Rapids, WI 54495

**Re: The Food Tree Well Replacement Project**  
Rudolph, Wisconsin  
CWEA Project # 3511-0400

Dear Mr. Batia:

This letter is to bring you up to date on the development of the alternative clean water system for homeowners who were impacted by a prior release of petroleum substances from the Food Tree gas station. As a result of the settlement of the lawsuit between a number of those homeowners and Mr. and Mrs. Inderbans Brar, an agreement was reached to provide for two alternative upgradient wells and to provide clean water to your home.

In accordance with the *Settlement Agreement and Release* document filed March 31, 2005, it is understood that you have previously granted consent for the engineer, in this case i.e., Central Wisconsin Engineers & Architects, Inc. (CWEA), to install a lateral water line to your home from the main water line, which will be installed along Greenfield Avenue. The new lateral line will be installed in the approximate location of your existing water supply well. The old drinking water well will be properly abandoned, as required by the Wisconsin Department of Natural Resources (WDNR). The new water supply will be connected to the existing piping system and then tested to ensure that the water quality conforms to the state standards.

Construction work on your lateral water line is expected to take place in approximately mid to late August. We are requesting that each homeowner please notify us so that we can be sure that everyone has received this notification letter and to provide us with a daytime telephone number where he or she can be reached should there be a delay in the construction process or in the event that other issues arise.

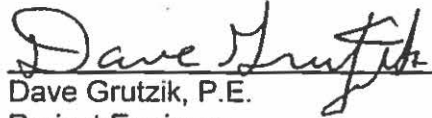
***Therefore, please contact Cindy Zelenka at Central Wisconsin Engineers & Architects, Inc. in one of the following manners with your daytime telephone numbers and with any questions you may have:***

**Address:** Central Wisconsin Engineers & Architects, Inc.  
5707 Schofield Avenue, P.O. Box 107  
Weston, WI 54476-0107

**Phone:** (800) 261-5707 or (715) 359-9400  
**Fax:** (715) 355-4199  
**E-mail:** czelenka@cwengineers.com

Sincerely,

**Central Wisconsin Engineers & Architects, Inc.**

  
\_\_\_\_\_  
Dave Grutzik, P.E.  
Project Engineer

  
\_\_\_\_\_  
Cindy L. Zelenka  
Environmental Specialist

cc: Mr. Eric Brach, Water Supply Specialist, WDNR, 473 Griffith Avenue, Wisconsin Rapids,  
WI 54494-7859  
Mr. Thomas Hvizdak, Remediation and Redevelopment, WDNR, 473 Griffith Avenue,  
Wisconsin Rapids, WI 54494-7859  
Mr. Thomas Riewe, WDNR, P.O. Box 7921, Madison, WI 53707-7921  
Ms. Barb Ingram, WDNR, P.O. Box 7921, Madison, WI 53707-7921  
Mr. Inderbans Brar, 1809 Savannah Way, Waunakee, WI 53597



**Engineers • Architects • Scientists • Surveyors**

5707 Schofield Avenue  
P.O. Box 107  
Weston, WI 54476-0107  
www.cwengineers.com

Tel 715.359.9400  
Fax 715.355.4199  
Toll-free 800.261.5707  
general@cwengineers.com

July 17, 2006

Mr. James Pechinski  
1749 Greenfield Avenue  
Wisconsin Rapids, WI 54495

**Re: The Food Tree Well Replacement Project**  
Rudolph, Wisconsin  
CWEA Project # 3511-0400

Dear Mr. Pechinski:

This letter is to bring you up to date on the development of the alternative clean water system for homeowners who were impacted by a prior release of petroleum substances from the Food Tree gas station. As a result of the settlement of the lawsuit between a number of those homeowners and Mr. and Mrs. Inderbans Brar, an agreement was reached to provide for two alternative upgradient wells and to provide clean water to your home.

In accordance with the *Settlement Agreement and Release* document filed March 31, 2005, it is understood that you have previously granted consent for the engineer, in this case i.e., Central Wisconsin Engineers & Architects, Inc. (CWEA), to install a lateral water line to your home from the main water line, which will be installed along Greenfield Avenue. The new lateral line will be installed in the approximate location of your existing water supply well. The old drinking water well will be properly abandoned, as required by the Wisconsin Department of Natural Resources (WDNR). The new water supply will be connected to the existing piping system and then tested to ensure that the water quality conforms to the state standards.

Construction work on your lateral water line is expected to take place in approximately mid to late August. We are requesting that each homeowner please notify us so that we can be sure that everyone has received this notification letter and to provide us with a daytime telephone number where he or she can be reached should there be a delay in the construction process or in the event that other issues arise.

***Therefore, please contact Cindy Zelenka at Central Wisconsin Engineers & Architects, Inc. in one of the following manners with your daytime telephone numbers and with any questions you may have:***

**Address:** Central Wisconsin Engineers & Architects, Inc.  
5707 Schofield Avenue, P.O. Box 107  
Weston, WI 54476-0107

**Phone:** (800) 261-5707 or (715) 359-9400  
**Fax:** (715) 355-4199  
**E-mail:** czelenka@cwengineers.com

Sincerely,

**Central Wisconsin Engineers & Architects, Inc.**



Dave Grutzik, P.E.  
Project Engineer



Cindy L. Zelenka  
Environmental Specialist

cc: Mr. Eric Brach, Water Supply Specialist, WDNR, 473 Griffith Avenue, Wisconsin Rapids,  
WI 54494-7859  
Mr. Thomas Hvizdak, Remediation and Redevelopment, WDNR, 473 Griffith Avenue,  
Wisconsin Rapids, WI 54494-7859  
Mr. Thomas Riewe, WDNR, P.O. Box 7921, Madison, WI 53707-7921  
Ms. Barb Ingram, WDNR, P.O. Box 7921, Madison, WI 53707-7921  
Mr. Inderbans Brar, 1809 Savannah Way, Waunakee, WI 53597



**Engineers • Architects • Scientists • Surveyors**

5707 Schofield Avenue  
P.O. Box 107  
Weston, WI 54476-0107  
www.cwengineers.com

Tel 715.359.9400  
Fax 715.355.4199  
Toll-free 800.261.5707  
general@cwengineers.com

---

July 17, 2006

Mr. Robert Noll  
1691 Greenfield Avenue  
Wisconsin Rapids, WI 54495

Re:           **The Food Tree Well Replacement Project**  
                  Rudolph, Wisconsin  
                  CWEA Project # 3511-0400

Dear Mr. Noll:

This letter is to bring you up to date on the development of the alternative clean water system for homeowners who were impacted by a prior release of petroleum substances from the Food Tree gas station. As a result of the settlement of the lawsuit between a number of those homeowners and Mr. and Mrs. Inderbans Brar, an agreement was reached to provide for two alternative upgradient wells and to provide clean water to your home.

In accordance with the *Settlement Agreement and Release* document filed March 31, 2005, it is understood that you have previously granted consent for the engineer, in this case i.e., Central Wisconsin Engineers & Architects, Inc. (CWEA), to install a lateral water line to your home from the main water line, which will be installed along Greenfield Avenue. The new lateral line will be installed in the approximate location of your existing water supply well. The old drinking water well will be properly abandoned, as required by the Wisconsin Department of Natural Resources (WDNR). The new water supply will be connected to the existing piping system and then tested to ensure that the water quality conforms to the state standards.

Construction work on your lateral water line is expected to take place in approximately mid to late August. We are requesting that each homeowner please notify us so that we can be sure that everyone has received this notification letter and to provide us with a daytime telephone number where he or she can be reached should there be a delay in the construction process or in the event that other issues arise.

***Therefore, please contact Cindy Zelenka at Central Wisconsin Engineers & Architects, Inc. in one of the following manners with your daytime telephone numbers and with any questions you may have:***

Address:       Central Wisconsin Engineers & Architects, Inc.  
                  5707 Schofield Avenue, P.O. Box 107  
                  Weston, WI 54476-0107

Phone:         (800) 261-5707 or (715) 359-9400  
Fax:            (715) 355-4199  
E-mail:        czelenka@cwengineers.com

Sincerely,

**Central Wisconsin Engineers & Architects, Inc.**

  
\_\_\_\_\_  
Dave Grutzik, P.E.  
Project Engineer

  
\_\_\_\_\_  
Cindy L. Zelenka  
Environmental Specialist

cc: Mr. Eric Brach, Water Supply Specialist, WDNR, 473 Griffith Avenue, Wisconsin Rapids,  
WI 54494-7859  
Mr. Thomas Hvizdak, Remediation and Redevelopment, WDNR, 473 Griffith Avenue,  
Wisconsin Rapids, WI 54494-7859  
Mr. Thomas Riewe, WDNR, P.O. Box 7921, Madison, WI 53707-7921  
Ms. Barb Ingram, WDNR, P.O. Box 7921, Madison, WI 53707-7921  
Mr. Inderbans Brar, 1809 Savannah Way, Waunakee, WI 53597





**Engineers • Architects • Scientists • Surveyors**

5707 Schofield Avenue  
P.O. Box 107  
Weston, WI 54476-0107  
www.cwengineers.com

Tel 715.359.9400  
Fax 715.355.4199  
Toll-free 800.261.5707  
general@cwengineers.com

---

July 17, 2006

Ms. Dawn Schlotman  
1705 Greenfield Avenue  
Wisconsin Rapids, WI 54495

**Re: The Food Tree Well Replacement Project**  
Rudolph, Wisconsin  
CWEA Project # 3511-0400

Dear Ms. Schlotman:

This letter is to bring you up to date on the development of the alternative clean water system for homeowners who were impacted by a prior release of petroleum substances from the Food Tree gas station. As a result of the settlement of the lawsuit between a number of those homeowners and Mr. and Mrs. Inderbans Brar, an agreement was reached to provide for two alternative upgradient wells and to provide clean water to your home.

In accordance with the *Settlement Agreement and Release* document filed March 31, 2005, it is understood that you have previously granted consent for the engineer, in this case i.e., Central Wisconsin Engineers & Architects, Inc. (CWEA), to install a lateral water line to your home from the main water line, which will be installed along Greenfield Avenue. The new lateral line will be installed in the approximate location of your existing water supply well. The old drinking water well will be properly abandoned, as required by the Wisconsin Department of Natural Resources (WDNR). The new water supply will be connected to the existing piping system and then tested to ensure that the water quality conforms to the state standards.

Construction work on your lateral water line is expected to take place in approximately mid to late August. We are requesting that each homeowner please notify us so that we can be sure that everyone has received this notification letter and to provide us with a daytime telephone number where he or she can be reached should there be a delay in the construction process or in the event that other issues arise.

***Therefore, please contact Cindy Zelenka at Central Wisconsin Engineers & Architects, Inc. in one of the following manners with your daytime telephone numbers and with any questions you may have:***

**Address:** Central Wisconsin Engineers & Architects, Inc.  
5707 Schofield Avenue, P.O. Box 107  
Weston, WI 54476-0107

**Phone:** (800) 261-5707 or (715) 359-9400  
**Fax:** (715) 355-4199  
**E-mail:** czelenka@cwengineers.com

Sincerely,

**Central Wisconsin Engineers & Architects, Inc.**

  
\_\_\_\_\_  
Dave Grutzik, P.E.  
Project Engineer

  
\_\_\_\_\_  
Cindy L. Zelenka  
Environmental Specialist

cc: Mr. Eric Brach, Water Supply Specialist, WDNR, 473 Griffith Avenue, Wisconsin Rapids,  
WI 54494-7859  
Mr. Thomas Hvizdak, Remediation and Redevelopment, WDNR, 473 Griffith Avenue,  
Wisconsin Rapids, WI 54494-7859  
Mr. Thomas Riewe, WDNR, P.O. Box 7921, Madison, WI 53707-7921  
Ms. Barb Ingram, WDNR, P.O. Box 7921, Madison, WI 53707-7921  
Mr. Inderbans Brar, 1809 Savannah Way, Waunakee, WI 53597

## ACCESS AGREEMENT

The parties enter into the following agreement this 21<sup>st</sup> day of July, 2006.

### RECITALS:

1. John and Lorilea Freeberg (hereafter referred to as "OWNER") are the owners of real estate located at 1680 Greenfield Ave., 1735 Greenfield Ave., and 1736 Greenfield Ave., Town of Rudolph, Wisconsin (the "Property").
2. Inderbans Brar, owner of The Food Tree, has offered to install a lateral connection on the Property to connect the OWNER's residence to the replacement drinking water system pipeline along Greenfield Avenue, Town of Rudolph, and Owner has accepted this offer.
3. Mr. Brar has retained Central Wisconsin Engineers and Architects, Inc. ("CWEA") to design and oversee the construction of the replacement drinking water system.
4. CWEA and its CONTRACTORS require access to the Property to install a lateral connection to the replacement drinking water system. The lateral will connect the replacement drinking system to the OWNER's preexisting plumbing at the location of the OWNER's prior drinking water well.

### AGREEMENT

Therefore, the parties agree as follows:

5. Access and Purposes. OWNER hereby permits CWEA and its CONTRACTORS, its employees, duly authorized representatives, agents and subcontractors, to enter upon and have rights of ingress and egress over and access at reasonable times to the Property for the following purposes:
  - To enter the Property with the necessary equipment via the existing driveway.
  - To set up appropriate staging and storage areas on the Property.
  - To perform excavations necessary to install the lateral.
  - To perform dewatering activities necessary to perform the work.
  - To install and maintain erosion control measures.
  - To perform all necessary property restoration activities after the lateral connection is complete.
  - To close out the OWNER's prior drinking water well as required by DNR.

6. Term. The term of this Agreement will commence upon execution of this Agreement and continue until restoration activities are complete.

7. Insurance and Bonds. CWEA and all subcontractors shall maintain, at minimum, insurance coverages as specified in the *Standard General Conditions of the Construction Contract*, prepared by the Engineers Joint Contract Documents Committee (EJCDC), which has been approved by The Associated General Contractors of America. CWEA also requires submittal of Performance and Payment Bonds from the awarded contractor.

8. Standard of Care. CWEA agrees to use its best efforts to minimize the damage caused to the property and to restore the OWNER's property to its original condition.

9. Applicable Law. This Agreement shall be construed in accordance with the laws of the state of Wisconsin.

IN WITNESS WHEREOF, the parties have executed this Access Agreement as of the day, month and year first above written.

**CENTRAL WISCONSIN ENGINEERS AND ARCHITECTS, INC.:**

By: Dave Gutzik /CLZ  
Title: Project Engineer

**OWNER:**

By: John Inaleag  
Lisa Freeberg