

Rec'd 1-6-15

KPRG and Associates, Inc.

TRANSMITTAL LETTER

January 5, 2015

Mr. David Volkert
Wisconsin Department of Natural Resources
141 NW Barstow Street, Room 180
Waukesha, WI 53212

Re: Soil Vapor Sampling Data
Former Bask Dry Cleaners – Waukesha, WI
BRRTS# 02-68-297669, FID# 268188800

Dear Mr. Volkert:

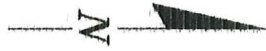
Per Wisconsin Department of Natural Resources (WDNR) requirements under NR 716.14, attached is a copy of the sample location map and the lab package for the first/second round of soil vapor sampling from probes installed as part of the vapor intrusion study for the above referenced site. Also included as Attachment 1 is a copy of the various data submittals that were sent to each property owner. If there are any questions, please contact me at 262-781-0475 or Mr. Brian Riordan of Westbrook Shopping Center at 305-607-6624.

Sincerely,
KPRG and Associates, Inc.



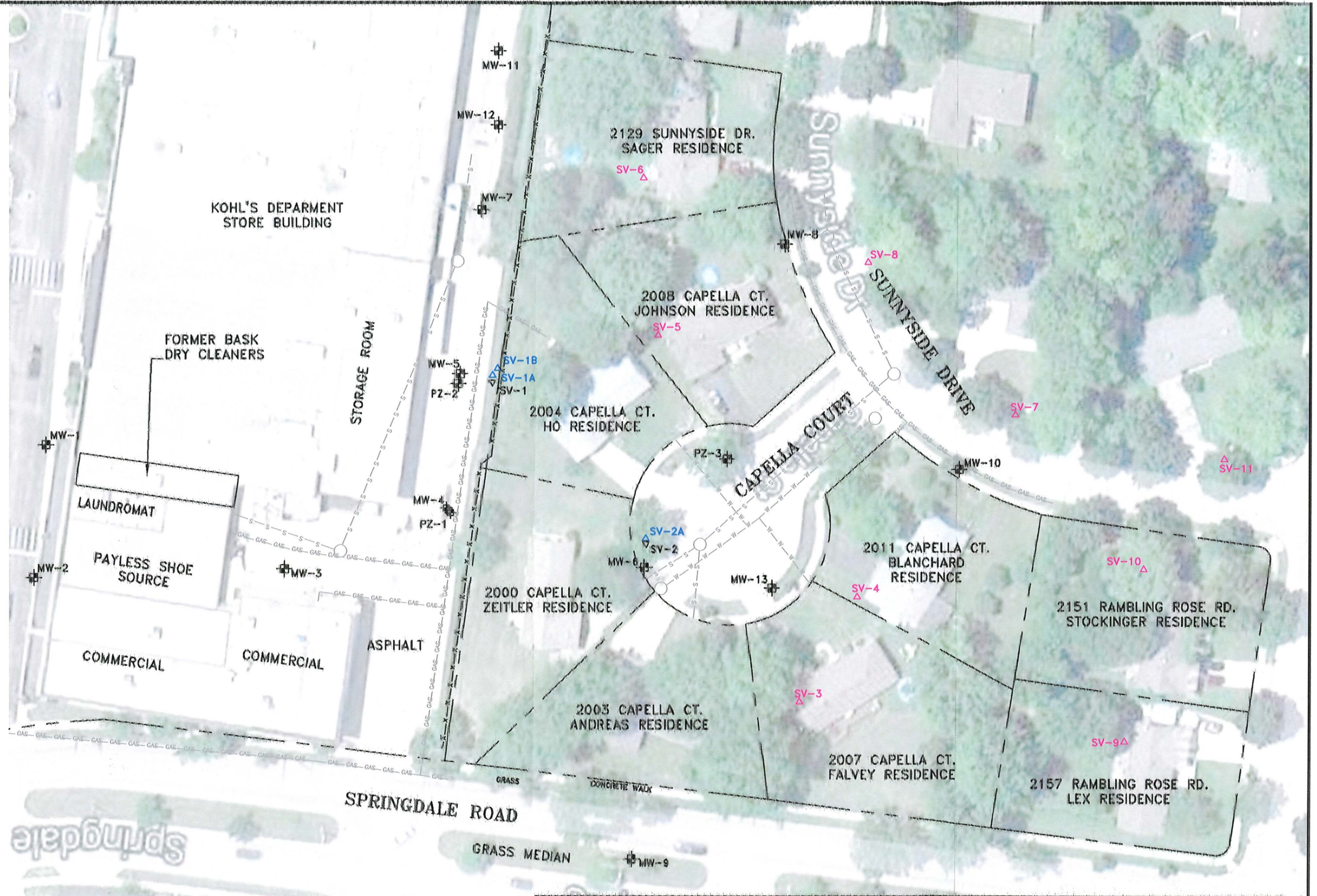
Richard R. Gnat, P.G.
Principal

cc: Brian Riordan, Westbrook Shopping Center
Greg Butts, Westbrook Shopping Center



LEGEND

- MW-12 MONITORING WELL, PIEZOMETER LOCATION
- SV-1 TEMPORARY SOIL VAPOR PROBE (2005), ABANDONED
- SV-1A SOIL VAPOR PROBE INSTALLED IN 2012
- SV-3 SOIL VAPOR PROBE LOCATIONS INSTALLED IN 2014



0 60'
 APPROXIMATE SCALE

ENVIRONMENTAL CONSULTATION & REMEDIATION		ADDITIONAL SOIL VAPOR PROBES LOCATIONS	
K P R G		WESTBROOK SHOPPING CENTER WAUKESHA, WISCONSIN	
KPRG and Associates, Inc.		Scale: 1" = 60'	Date: January 5, 2015
1465 West Lisbon Road, Suite 28 Brookfield, Wisconsin 53005 Telephone 262-781-0475 Facsimile 262-781-0178		KPRG Project No. 10009	FIGURE 1
914 Plaza Drive, Suite 106 Westmont, Illinois 60559 Telephone 630-325-1300 Facsimile 630-325-1593			



12065 Lebanon Rd.
Mt. Juliet, TN 37122
(615) 758-5858
1-800-767-5859
Fax (615) 758-5859

Tax I.D. 62-0814289

Est. 1970

Patrick Allenstein, P.G.
KPRG and Associates, Inc.
14665 West Lisbon Road, Suite 2B
Brookfield, WI 53005

Report Summary

Monday December 29, 2014

Report Number: L740309

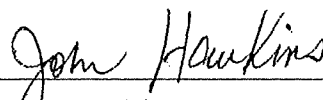
Samples Received: 12/20/14

Client Project: 10009

Description: Bask Dry Cleaners

The analytical results in this report are based upon information supplied by you, the client, and are for your exclusive use. If you have any questions regarding this data package, please do not hesitate to call.

Entire Report Reviewed By:



John Hawkins , ESC Representative

Laboratory Certification Numbers

A2LA - 1461-01, AIHA - 100789, AL - 40660, CA - 01157CA, CT - PH-0197,
FL - E87487, GA - 923, IN - C-TN-01, KY - 90010, KYUST - 0016,
NC - ENV375/DW21704/BIO041, ND - R-140. NJ - TN002, NJ NELAP - TN002,
SC - 84004, TN - 2006, VA - 460132, WV - 233, AZ - 0612,
MN - 047-999-395, NY - 11742, WI - 998093910, NV - TN000032011-1,
TX - T104704245-11-3, OK - 9915, PA - 68-02979, IA Lab #364, EPA - TN002

Accreditation is only applicable to the test methods specified on each scope of accreditation held by ESC Lab Sciences.

This report may not be reproduced, except in full, without written approval from ESC Lab Sciences. Where applicable, sampling conducted by ESC is performed per guidance provided in laboratory standard operating procedures: 060302, 060303, and 060304.



YOUR LAB OF CHOICE

12065 Lebanon Rd.
Mt. Juliet, TN 37122
(615) 758-5858
1-800-767-5859
Fax (615) 758-5859

Tax I.D. 62-0814289

Est. 1970

REPORT OF ANALYSIS

December 29, 2014

Patrick Allenstein, P.G.
KPRG and Associates, Inc.
14665 West Lisbon Road, Suite 2B
Brookfield, WI 53005

ESC Sample # : L740309-01

Date Received : December 20, 2014
Description : Bask Dry Cleaners

Site ID : WAUKESHA, WI

Sample ID : SV-1B

Project # : 10009

Collected By : Josh Davenport
Collection Date : 12/18/14 14:18

Parameter	Cas#	Mol Wght	RDL1	RDL2	ppbv	ug/m3	Method	Date	Dil.
Volatile Organics									
Chloroethane	75-00-3	64.5	0.200	0.530	< 0.20	< 0.53	TO-15	12/27/14	1
1,2-Dichloroethane	107-06-2	99	0.200	0.810	< 0.20	< 0.81	TO-15	12/27/14	1
1,1-Dichloroethane	75-34-3	98	0.200	0.800	< 0.20	< 0.80	TO-15	12/27/14	1
1,1-Dichloroethene	75-35-4	96.9	0.200	0.790	< 0.20	< 0.79	TO-15	12/27/14	1
cis-1,2-Dichloroethene	156-59-2	96.9	0.200	0.790	< 0.20	< 0.79	TO-15	12/27/14	1
trans-1,2-Dichloroethene	156-60-5	96.9	0.200	0.790	< 0.20	< 0.79	TO-15	12/27/14	1
Tetrachloroethylene	127-18-4	166	2.00	14.0	89.	600	TO-15	12/28/14	10
1,1,1-Trichloroethane	71-55-6	133	0.200	1.10	< 0.20	< 1.1	TO-15	12/27/14	1
1,1,2-Trichloroethane	79-00-5	133	0.200	1.10	< 0.20	< 1.1	TO-15	12/27/14	1
Trichloroethylene	79-01-6	131	0.200	1.10	< 0.20	< 1.1	TO-15	12/27/14	1
Vinyl chloride	75-01-4	62.5	0.200	0.510	< 0.20	< 0.51	TO-15	12/27/14	1
1,4-Bromofluorobenzene	460-00-4				102	% Rec.	TO-15	12/27/14	1

RDL1 = ppbv , RDL2 = ug/m3

Note:

Units are based on (STP) - Standard Temperature and Pressure

The reported analytical results relate only to the sample submitted.

This report shall not be reproduced, except in full, without the written approval from ESC.

Reported: 12/29/14 09:53 Printed: 12/29/14 11:13



YOUR LAB OF CHOICE

12065 Lebanon Rd.
 Mt. Juliet, TN 37122
 (615) 758-5858
 1-800-767-5859
 Fax (615) 758-5859

Tax I.D. 62-0814289

Est. 1970

REPORT OF ANALYSIS

December 29, 2014

Patrick Allenstein, P.G.
 KPRG and Associates, Inc.
 14665 West Lisbon Road, Suite 2B
 Brookfield, WI 53005

ESC Sample # : L740309-02

Date Received : December 20, 2014
 Description : Bask Dry Cleaners

Site ID : WAUKESHA, WI

Sample ID : SV-2A

Project # : 10009

Collected By : Josh Davenport
 Collection Date : 12/18/14 11:50

Parameter	Cas#	Mol Wght	RDL1	RDL2	ppbv	ug/m3	Method	Date	Dil.
Volatile Organics									
Chloroethane	75-00-3	64.5	0.200	0.530	< 0.20	< 0.53	TO-15	12/27/14	1
1,2-Dichloroethane	107-06-2	99	0.200	0.810	< 0.20	< 0.81	TO-15	12/27/14	1
1,1-Dichloroethane	75-34-3	98	0.200	0.800	< 0.20	< 0.80	TO-15	12/27/14	1
1,1-Dichloroethene	75-35-4	96.9	0.200	0.790	< 0.20	< 0.79	TO-15	12/27/14	1
cis-1,2-Dichloroethene	156-59-2	96.9	0.200	0.790	< 0.20	< 0.79	TO-15	12/27/14	1
trans-1,2-Dichloroethene	156-60-5	96.9	0.200	0.790	< 0.20	< 0.79	TO-15	12/27/14	1
Tetrachloroethylene	127-18-4	166	2.00	14.0	58.	390	TO-15	12/28/14	10
1,1,1-Trichloroethane	71-55-6	133	0.200	1.10	< 0.20	< 1.1	TO-15	12/27/14	1
1,1,2-Trichloroethane	79-00-5	133	0.200	1.10	< 0.20	< 1.1	TO-15	12/27/14	1
Trichloroethylene	79-01-6	131	0.200	1.10	5.4	29.	TO-15	12/27/14	1
Vinyl chloride	75-01-4	62.5	0.200	0.510	< 0.20	< 0.51	TO-15	12/27/14	1
1,4-Bromofluorobenzene	460-00-4				99	% Rec.	TO-15	12/27/14	1

RDL1 = ppbv , RDL2 = ug/m3

Note:

Units are based on (STP) - Standard Temperature and Pressure

The reported analytical results relate only to the sample submitted.

This report shall not be reproduced, except in full, without the written approval from ESC.

Reported: 12/29/14 09:53 Printed: 12/29/14 11:13



YOUR LAB OF CHOICE

12065 Lebanon Rd.
Mt. Juliet, TN 37122
(615) 758-5858
1-800-767-5859
Fax (615) 758-5859

Tax I.D. 62-0814289

Est. 1970

REPORT OF ANALYSIS

December 29, 2014

Patrick Allenstein, P.G.
KPRG and Associates, Inc.
14665 West Lisbon Road, Suite 2B
Brookfield, WI 53005

ESC Sample # : L740309-03

Date Received : December 20, 2014
Description : Bask Dry Cleaners

Site ID : WAUKESHA, WI

Sample ID : SV-3

Project # : 10009

Collected By : Josh Davenport
Collection Date : 12/18/14 12:11

Table with 10 columns: Parameter, Cas#, Mol Wght, RDL1, RDL2, ppbv, ug/m3, Method, Date, Dil. Rows include Volatile Organics, Chloroethane, 1,2-Dichloroethane, 1,1-Dichloroethane, 1,1-Dichloroethene, cis-1,2-Dichloroethene, trans-1,2-Dichloroethene, Tetrachloroethylene, 1,1,1-Trichloroethane, 1,1,2-Trichloroethane, Trichloroethylene, Vinyl chloride, 1,4-Bromofluorobenzene.

RDL1 = ppbv , RDL2 = ug/m3

Note:

Units are based on (STP) - Standard Temperature and Pressure

The reported analytical results relate only to the sample submitted.

This report shall not be reproduced, except in full, without the written approval from ESC.

Reported: 12/29/14 09:53 Printed: 12/29/14 11:13



YOUR LAB OF CHOICE

12065 Lebanon Rd.
Mt. Juliet, TN 37122
(615) 758-5858
1-800-767-5859
Fax (615) 758-5859

Tax I.D. 62-0814289

Est. 1970

REPORT OF ANALYSIS

December 29, 2014

Patrick Allenstein, P.G.
KPRG and Associates, Inc.
14665 West Lisbon Road, Suite 2B
Brookfield, WI 53005

ESC Sample # : L740309-04

Date Received : December 20, 2014
Description : Bask Dry Cleaners
Sample ID : SV-4
Collected By : Josh Davenport
Collection Date : 12/18/14 13:45

Site ID : WAUKESHA, WI

Project # : 10009

Parameter	Cas#	Mol Wght	RDL1	RDL2	ppbv	ug/m3	Method	Date	Dil.
Volatile Organics									
Chloroethane	75-00-3	64.5	0.200	0.530	< 0.20	< 0.53	TO-15	12/27/14	1
1,2-Dichloroethane	107-06-2	99	0.200	0.810	< 0.20	< 0.81	TO-15	12/27/14	1
1,1-Dichloroethane	75-34-3	98	0.200	0.800	< 0.20	< 0.80	TO-15	12/27/14	1
1,1-Dichloroethene	75-35-4	96.9	0.200	0.790	< 0.20	< 0.79	TO-15	12/27/14	1
cis-1,2-Dichloroethene	156-59-2	96.9	0.200	0.790	2.9	11.	TO-15	12/27/14	1
trans-1,2-Dichloroethene	156-60-5	96.9	0.200	0.790	2.6	10.	TO-15	12/27/14	1
Tetrachloroethylene	127-18-4	166	4.00	27.0	160	1100	TO-15	12/28/14	20
1,1,1-Trichloroethane	71-55-6	133	0.200	1.10	< 0.20	< 1.1	TO-15	12/27/14	1
1,1,2-Trichloroethane	79-00-5	133	0.200	1.10	< 0.20	< 1.1	TO-15	12/27/14	1
Trichloroethylene	79-01-6	131	0.200	1.10	29.	160	TO-15	12/27/14	1
Vinyl chloride	75-01-4	62.5	0.200	0.510	< 0.20	< 0.51	TO-15	12/27/14	1
1,4-Bromofluorobenzene	460-00-4				103	% Rec.	TO-15	12/27/14	1

RDL1 = ppbv , RDL2 = ug/m3

Note:

Units are based on (STP) - Standard Temperature and Pressure

The reported analytical results relate only to the sample submitted.

This report shall not be reproduced, except in full, without the written approval from ESC.

Reported: 12/29/14 09:53 Printed: 12/29/14 11:13



YOUR LAB OF CHOICE

12065 Lebanon Rd.
 Mt. Juliet, TN 37122
 (615) 758-5858
 1-800-767-5859
 Fax (615) 758-5859

Tax I.D. 62-0814289

Est. 1970

REPORT OF ANALYSIS

December 29, 2014

Patrick Allenstein, P.G.
 KPRG and Associates, Inc.
 14665 West Lisbon Road, Suite 2B
 Brookfield, WI 53005

ESC Sample # : L740309-05

Date Received : December 20, 2014
 Description : Bask Dry Cleaners

Site ID : WAUKESHA, WI

Sample ID : SV-5

Project # : 10009

Collected By : Josh Davenport
 Collection Date : 12/18/14 12:01

Parameter	Cas#	Mol Wght	RDL1	RDL2	ppbv	ug/m3	Method	Date	Dil.
Volatile Organics									
Chloroethane	75-00-3	64.5	0.200	0.530	< 0.20	< 0.53	TO-15	12/27/14	1
1,2-Dichloroethane	107-06-2	99	0.200	0.810	< 0.20	< 0.81	TO-15	12/27/14	1
1,1-Dichloroethane	75-34-3	98	0.200	0.800	< 0.20	< 0.80	TO-15	12/27/14	1
1,1-Dichloroethene	75-35-4	96.9	0.200	0.790	< 0.20	< 0.79	TO-15	12/27/14	1
cis-1,2-Dichloroethene	156-59-2	96.9	0.200	0.790	< 0.20	< 0.79	TO-15	12/27/14	1
trans-1,2-Dichloroethene	156-60-5	96.9	0.200	0.790	< 0.20	< 0.79	TO-15	12/27/14	1
Tetrachloroethylene	127-18-4	166	0.200	1.40	< 0.20	< 1.4	TO-15	12/27/14	1
1,1,1-Trichloroethane	71-55-6	133	0.200	1.10	< 0.20	< 1.1	TO-15	12/27/14	1
1,1,2-Trichloroethane	79-00-5	133	0.200	1.10	< 0.20	< 1.1	TO-15	12/27/14	1
Trichloroethylene	79-01-6	131	0.200	1.10	< 0.20	< 1.1	TO-15	12/27/14	1
Vinyl chloride	75-01-4	62.5	0.200	0.510	< 0.20	< 0.51	TO-15	12/27/14	1
1,4-Bromofluorobenzene	460-00-4				100	% Rec.	TO-15	12/27/14	1

RDL1 = ppbv , RDL2 = ug/m3

Note:

Units are based on (STP) - Standard Temperature and Pressure

The reported analytical results relate only to the sample submitted.

This report shall not be reproduced, except in full, without the written approval from ESC.

Reported: 12/29/14 09:53 Printed: 12/29/14 11:13



YOUR LAB OF CHOICE

12065 Lebanon Rd.
Mt. Juliet, TN 37122
(615) 758-5858
1-800-767-5859
Fax (615) 758-5859

Tax I.D. 62-0814289

Est. 1970

REPORT OF ANALYSIS

December 29, 2014

Patrick Allenstein, P.G.
KPRG and Associates, Inc.
14665 West Lisbon Road, Suite 2B
Brookfield, WI 53005

ESC Sample # : L740309-06

Date Received : December 20, 2014
Description : Bask Dry Cleaners
Sample ID : SV-6
Collected By : Josh Davenport
Collection Date : 12/18/14 14:27

Site ID : WAUKESHA, WI

Project # : 10009

Parameter	Cas#	Mol Wght	RDL1	RDL2	ppbv	ug/m3	Method	Date	Dil.
Volatile Organics									
Chloroethane	75-00-3	64.5	0.200	0.530	< 0.20	< 0.53	TO-15	12/27/14	1
1,2-Dichloroethane	107-06-2	99	0.200	0.810	< 0.20	< 0.81	TO-15	12/27/14	1
1,1-Dichloroethane	75-34-3	98	0.200	0.800	< 0.20	< 0.80	TO-15	12/27/14	1
1,1-Dichloroethene	75-35-4	96.9	0.200	0.790	< 0.20	< 0.79	TO-15	12/27/14	1
cis-1,2-Dichloroethene	156-59-2	96.9	0.200	0.790	< 0.20	< 0.79	TO-15	12/27/14	1
trans-1,2-Dichloroethene	156-60-5	96.9	0.200	0.790	< 0.20	< 0.79	TO-15	12/27/14	1
Tetrachloroethylene	127-18-4	166	0.200	1.40	0.22	1.5	TO-15	12/27/14	1
1,1,1-Trichloroethane	71-55-6	133	0.200	1.10	< 0.20	< 1.1	TO-15	12/27/14	1
1,1,2-Trichloroethane	79-00-5	133	0.200	1.10	< 0.20	< 1.1	TO-15	12/27/14	1
Trichloroethylene	79-01-6	131	0.200	1.10	< 0.20	< 1.1	TO-15	12/27/14	1
Vinyl chloride	75-01-4	62.5	0.200	0.510	< 0.20	< 0.51	TO-15	12/27/14	1
1,4-Bromofluorobenzene	460-00-4				102	% Rec.	TO-15	12/27/14	1

RDL1 = ppbv , RDL2 = ug/m3

Note:

Units are based on (STP) - Standard Temperature and Pressure

The reported analytical results relate only to the sample submitted.

This report shall not be reproduced, except in full, without the written approval from ESC.

Reported: 12/29/14 09:53 Printed: 12/29/14 11:13



YOUR LAB OF CHOICE

12065 Lebanon Rd.
Mt. Juliet, TN 37122
(615) 758-5858
1-800-767-5859
Fax (615) 758-5859

Tax I.D. 62-0814289

Est. 1970

REPORT OF ANALYSIS

December 29, 2014

Patrick Allenstein, P.G.
KPRG and Associates, Inc.
14665 West Lisbon Road, Suite 2B
Brookfield, WI 53005

ESC Sample # : L740309-07

Date Received : December 20, 2014
Description : Bask Dry Cleaners

Site ID : WAUKESHA, WI

Sample ID : SV-7

Project # : 10009

Collected By : Josh Davenport
Collection Date : 12/18/14 12:34

Parameter	Cas#	Mol Wght	RDL1	RDL2	ppbv	ug/m3	Method	Date	Dil.
Volatile Organics									
Chloroethane	75-00-3	64.5	0.200	0.530	< 0.20	< 0.53	TO-15	12/27/14	1
1,2-Dichloroethane	107-06-2	99	0.200	0.810	< 0.20	< 0.81	TO-15	12/27/14	1
1,1-Dichloroethane	75-34-3	98	0.200	0.800	< 0.20	< 0.80	TO-15	12/27/14	1
1,1-Dichloroethene	75-35-4	96.9	0.200	0.790	< 0.20	< 0.79	TO-15	12/27/14	1
cis-1,2-Dichloroethene	156-59-2	96.9	0.200	0.790	< 0.20	< 0.79	TO-15	12/27/14	1
trans-1,2-Dichloroethene	156-60-5	96.9	0.200	0.790	< 0.20	< 0.79	TO-15	12/27/14	1
Tetrachloroethylene	127-18-4	166	0.200	1.40	16.	110	TO-15	12/27/14	1
1,1,1-Trichloroethane	71-55-6	133	0.200	1.10	0.39	2.1	TO-15	12/27/14	1
1,1,2-Trichloroethane	79-00-5	133	0.200	1.10	< 0.20	< 1.1	TO-15	12/27/14	1
Trichloroethylene	79-01-6	131	0.200	1.10	5.1	27.	TO-15	12/27/14	1
Vinyl chloride	75-01-4	62.5	0.200	0.510	< 0.20	< 0.51	TO-15	12/27/14	1
1,4-Bromofluorobenzene	460-00-4				99.4	% Rec.	TO-15	12/27/14	1

RDL1 = ppbv , RDL2 = ug/m3

Note:

Units are based on (STP) - Standard Temperature and Pressure

The reported analytical results relate only to the sample submitted.

This report shall not be reproduced, except in full, without the written approval from ESC.

Reported: 12/29/14 09:53 Printed: 12/29/14 11:13



YOUR LAB OF CHOICE

12065 Lebanon Rd.
 Mt. Juliet, TN 37122
 (615) 758-5858
 1-800-767-5859
 Fax (615) 758-5859

Tax I.D. 62-0814289

Est. 1970

REPORT OF ANALYSIS

December 29, 2014

Patrick Allenstein, P.G.
 KPRG and Associates, Inc.
 14665 West Lisbon Road, Suite 2B
 Brookfield, WI 53005

ESC Sample # : L740309-08

Date Received : December 20, 2014
 Description : Bask Dry Cleaners

Site ID : WAUKESHA, WI

Sample ID : SV-8

Project # : 10009

Collected By : Josh Davenport
 Collection Date : 12/18/14 12:28

Parameter	Cas#	Mol Wght	RDL1	RDL2	ppbv	ug/m3	Method	Date	Dil.
Volatile Organics									
Chloroethane	75-00-3	64.5	0.200	0.530	< 0.20	< 0.53	TO-15	12/27/14	1
1,2-Dichloroethane	107-06-2	99	0.200	0.810	< 0.20	< 0.81	TO-15	12/27/14	1
1,1-Dichloroethane	75-34-3	98	0.200	0.800	< 0.20	< 0.80	TO-15	12/27/14	1
1,1-Dichloroethene	75-35-4	96.9	0.200	0.790	< 0.20	< 0.79	TO-15	12/27/14	1
cis-1,2-Dichloroethene	156-59-2	96.9	0.200	0.790	< 0.20	< 0.79	TO-15	12/27/14	1
trans-1,2-Dichloroethene	156-60-5	96.9	0.200	0.790	< 0.20	< 0.79	TO-15	12/27/14	1
Tetrachloroethylene	127-18-4	166	0.200	1.40	< 0.20	< 1.4	TO-15	12/27/14	1
1,1,1-Trichloroethane	71-55-6	133	0.200	1.10	< 0.20	< 1.1	TO-15	12/27/14	1
1,1,2-Trichloroethane	79-00-5	133	0.200	1.10	< 0.20	< 1.1	TO-15	12/27/14	1
Trichloroethylene	79-01-6	131	0.200	1.10	< 0.20	< 1.1	TO-15	12/27/14	1
Vinyl chloride	75-01-4	62.5	0.200	0.510	< 0.20	< 0.51	TO-15	12/27/14	1
1,4-Bromofluorobenzene	460-00-4				100	% Rec.	TO-15	12/27/14	1

RDL1 = ppbv , RDL2 = ug/m3

Note:

Units are based on (STP) - Standard Temperature and Pressure

The reported analytical results relate only to the sample submitted.

This report shall not be reproduced, except in full, without the written approval from ESC.

Reported: 12/29/14 09:53 Printed: 12/29/14 11:13



YOUR LAB OF CHOICE

12065 Lebanon Rd.
 Mt. Juliet, TN 37122
 (615) 758-5858
 1-800-767-5859
 Fax (615) 758-5859

Tax I.D. 62-0814289
 Est. 1970

REPORT OF ANALYSIS

December 29, 2014

Patrick Allenstein, P.G.
 KPRG and Associates, Inc.
 14665 West Lisbon Road, Suite 2B
 Brookfield, WI 53005

ESC Sample # : L740309-09

Date Received : December 20, 2014
 Description : Bask Dry Cleaners

Site ID : WAUKESHA, WI

Sample ID : SV-9

Project # : 10009

Collected By : Josh Davenport
 Collection Date : 12/18/14 15:01

Parameter	Cas#	Mol Wght	RDL1	RDL2	ppbv	ug/m3	Method	Date	Dil.
Volatile Organics									
Chloroethane	75-00-3	64.5	1.60	4.20	< 1.6	< 4.2	TO-15	12/27/14	8
1,2-Dichloroethane	107-06-2	99	1.60	6.50	< 1.6	< 6.5	TO-15	12/27/14	8
1,1-Dichloroethane	75-34-3	98	1.60	6.40	< 1.6	< 6.4	TO-15	12/27/14	8
1,1-Dichloroethene	75-35-4	96.9	1.60	6.30	< 1.6	< 6.3	TO-15	12/27/14	8
cis-1,2-Dichloroethene	156-59-2	96.9	1.60	6.30	45.	180	TO-15	12/27/14	8
trans-1,2-Dichloroethene	156-60-5	96.9	1.60	6.30	< 1.6	< 6.3	TO-15	12/27/14	8
Tetrachloroethylene	127-18-4	166	16.0	110.	730	5000	TO-15	12/28/14	80
1,1,1-Trichloroethane	71-55-6	133	1.60	8.70	< 1.6	< 8.7	TO-15	12/27/14	8
1,1,2-Trichloroethane	79-00-5	133	1.60	8.70	< 1.6	< 8.7	TO-15	12/27/14	8
Trichloroethylene	79-01-6	131	1.60	8.60	17.	91.	TO-15	12/27/14	8
Vinyl chloride	75-01-4	62.5	1.60	4.10	< 1.6	< 4.1	TO-15	12/27/14	8
1,4-Bromofluorobenzene	460-00-4				103	% Rec.	TO-15	12/27/14	1

RDL1 = ppbv , RDL2 = ug/m3

Note:

Units are based on (STP) - Standard Temperature and Pressure

The reported analytical results relate only to the sample submitted.

This report shall not be reproduced, except in full, without the written approval from ESC.

Reported: 12/29/14 09:53 Printed: 12/29/14 11:13



YOUR LAB OF CHOICE

12065 Lebanon Rd.
 Mt. Juliet, TN 37122
 (615) 758-5858
 1-800-767-5859
 Fax (615) 758-5859

Tax I.D. 62-0814289

Est. 1970

REPORT OF ANALYSIS

December 29, 2014

Patrick Allenstein, P.G.
 KPRG and Associates, Inc.
 14665 West Lisbon Road, Suite 2B
 Brookfield, WI 53005

ESC Sample # : L740309-10

Date Received : December 20, 2014
 Description : Bask Dry Cleaners

Site ID : WAUKESHA, WI

Sample ID : SV-10

Project # : 10009

Collected By : Josh Davenport
 Collection Date : 12/18/14 14:57

Parameter	Cas#	Mol Wght	RDL1	RDL2	ppbv	ug/m3	Method	Date	Dil.
Volatile Organics									
Chloroethane	75-00-3	64.5	0.200	0.530	< 0.20	< 0.53	TO-15	12/27/14	1
1,2-Dichloroethane	107-06-2	99	0.200	0.810	< 0.20	< 0.81	TO-15	12/27/14	1
1,1-Dichloroethane	75-34-3	98	0.200	0.800	< 0.20	< 0.80	TO-15	12/27/14	1
1,1-Dichloroethene	75-35-4	96.9	0.200	0.790	< 0.20	< 0.79	TO-15	12/27/14	1
cis-1,2-Dichloroethene	156-59-2	96.9	0.200	0.790	1.6	6.3	TO-15	12/27/14	1
trans-1,2-Dichloroethene	156-60-5	96.9	0.200	0.790	0.32	1.3	TO-15	12/27/14	1
Tetrachloroethylene	127-18-4	166	2.00	14.0	110	750	TO-15	12/28/14	10
1,1,1-Trichloroethane	71-55-6	133	0.200	1.10	< 0.20	< 1.1	TO-15	12/27/14	1
1,1,2-Trichloroethane	79-00-5	133	0.200	1.10	< 0.20	< 1.1	TO-15	12/27/14	1
Trichloroethylene	79-01-6	131	0.200	1.10	6.2	33.	TO-15	12/27/14	1
Vinyl chloride	75-01-4	62.5	0.200	0.510	< 0.20	< 0.51	TO-15	12/27/14	1
1,4-Bromofluorobenzene	460-00-4				106	% Rec.	TO-15	12/27/14	1

RDL1 = ppbv , RDL2 = ug/m3

Note:

Units are based on (STP) - Standard Temperature and Pressure

The reported analytical results relate only to the sample submitted.

This report shall not be reproduced, except in full, without the written approval from ESC.

Reported: 12/29/14 09:53 Printed: 12/29/14 11:13



YOUR LAB OF CHOICE

12065 Lebanon Rd.
Mt. Juliet, TN 37122
(615) 758-5858
1-800-767-5859
Fax (615) 758-5859

Tax I.D. 62-0814289

Est. 1970

REPORT OF ANALYSIS

December 29, 2014

Patrick Allenstein, P.G.
KPRG and Associates, Inc.
14665 West Lisbon Road, Suite 2B
Brookfield, WI 53005

ESC Sample # : L740309-11

Date Received : December 20, 2014
Description : Bask Dry Cleaners

Site ID : WAUKESHA, WI

Sample ID : SV-11

Project # : 10009

Collected By : Josh Davenport
Collection Date : 12/18/14 14:48

Parameter	Cas#	Mol Wght	RDL1	RDL2	ppbv	ug/m3	Method	Date	Dil.
Volatile Organics									
Chloroethane	75-00-3	64.5	0.200	0.530	< 0.20	< 0.53	TO-15	12/27/14	1
1,2-Dichloroethane	107-06-2	99	0.200	0.810	< 0.20	< 0.81	TO-15	12/27/14	1
1,1-Dichloroethane	75-34-3	98	0.200	0.800	< 0.20	< 0.80	TO-15	12/27/14	1
1,1-Dichloroethene	75-35-4	96.9	0.200	0.790	< 0.20	< 0.79	TO-15	12/27/14	1
cis-1,2-Dichloroethene	156-59-2	96.9	0.200	0.790	< 0.20	< 0.79	TO-15	12/27/14	1
trans-1,2-Dichloroethene	156-60-5	96.9	0.200	0.790	< 0.20	< 0.79	TO-15	12/27/14	1
Tetrachloroethylene	127-18-4	166	0.200	1.40	0.47	3.2	TO-15	12/27/14	1
1,1,1-Trichloroethane	71-55-6	133	0.200	1.10	< 0.20	< 1.1	TO-15	12/27/14	1
1,1,2-Trichloroethane	79-00-5	133	0.200	1.10	< 0.20	< 1.1	TO-15	12/27/14	1
Trichloroethylene	79-01-6	131	0.200	1.10	< 0.20	< 1.1	TO-15	12/27/14	1
Vinyl chloride	75-01-4	62.5	0.200	0.510	< 0.20	< 0.51	TO-15	12/27/14	1
1,4-Bromofluorobenzene	460-00-4				101	% Rec.	TO-15	12/27/14	1

RDL1 = ppbv , RDL2 = ug/m3

Note:

Units are based on (STP) - Standard Temperature and Pressure

The reported analytical results relate only to the sample submitted.

This report shall not be reproduced, except in full, without the written approval from ESC.

Reported: 12/29/14 09:53 Printed: 12/29/14 11:13

Summary of Remarks For Samples Printed
12/29/14 at 11:13:52

TSR Signing Reports: 341

Sample: L740309-01 Account: KRPGBWI Received: 12/20/14 09:00 Due Date: 12/29/14 00:00 RPT Date: 12/29/14 09:53
Sample: L740309-02 Account: KRPGBWI Received: 12/20/14 09:00 Due Date: 12/29/14 00:00 RPT Date: 12/29/14 09:53
Sample: L740309-03 Account: KRPGBWI Received: 12/20/14 09:00 Due Date: 12/29/14 00:00 RPT Date: 12/29/14 09:53
Sample: L740309-04 Account: KRPGBWI Received: 12/20/14 09:00 Due Date: 12/29/14 00:00 RPT Date: 12/29/14 09:53
Sample: L740309-05 Account: KRPGBWI Received: 12/20/14 09:00 Due Date: 12/29/14 00:00 RPT Date: 12/29/14 09:53
Sample: L740309-06 Account: KRPGBWI Received: 12/20/14 09:00 Due Date: 12/29/14 00:00 RPT Date: 12/29/14 09:53
Sample: L740309-07 Account: KRPGBWI Received: 12/20/14 09:00 Due Date: 12/29/14 00:00 RPT Date: 12/29/14 09:53
Sample: L740309-08 Account: KRPGBWI Received: 12/20/14 09:00 Due Date: 12/29/14 00:00 RPT Date: 12/29/14 09:53
Sample: L740309-09 Account: KRPGBWI Received: 12/20/14 09:00 Due Date: 12/29/14 00:00 RPT Date: 12/29/14 09:53
Sample: L740309-10 Account: KRPGBWI Received: 12/20/14 09:00 Due Date: 12/29/14 00:00 RPT Date: 12/29/14 09:53
Sample: L740309-11 Account: KRPGBWI Received: 12/20/14 09:00 Due Date: 12/29/14 00:00 RPT Date: 12/29/14 09:53

KPRG and Associates, Inc.
 14665 West Lisbon Road, Suite 2B
 Brookfield, WI 53005

Billing Information:
 Attn: Accounts Payable
 414 Plaza Dr., Ste. 106
 Westmont, IL 60559

Report for:
Patrick Allenstein, P.G.

Email To: patricka@KPRGinc.com

Project
 Description: **Bask Dry Cleaners**

City/State
 Collected: **WAUKESHA, WI**

Phone: **262-781-0475**
 Fax:

Client Project #
10009

Lab Project #
KRPGBW1-12-12-14

Collected by (print):
JOSH DIVENPORT

Site/Facility ID #
WAUKESHA, WI

P.O. #

Collected by (signature):
[Signature]
 Immediately
 Packed on ice **N X Y**

Rush? (Lab MUST Be Notified)
 ___ Same Day 200%
 ___ Next Day 100%
 ___ Two Day 50%
 ___ Three Day 25%

Date Results Needed
11/2/15
 Email? ___ No **X** Yes
 FAX? ___ No ___ Yes

Analysis / Container / Preservative	
TO-15 Summa, CWC ONLY	

Chain of Custody Page 1 of 2

YOUR LAB OF CHOICE

12065 Lebanon Rd
 Mount Juliet, TN 37122
 Phone: 615-758-5858
 Phone: 800-767-5858
 Fax: 615-758-5859

L# **L740309**
K136
 Acctnum: **KRPGBW1**
 Template: **T99112**
 Prelogin: **P493506**
 TSR: **341 - John Hawkins**
 PB: **12-16-14 [Signature]**

Shipped Via: **FedEX Ground**

Sample ID	Comp/Grab	Matrix *	Depth	Date	Time	Cntrs	Analysis / Container / Preservative										Retn./Contaminant	Sample # (Lab only)								
SV-18	1hr	Air		12/18/14	14:18	1	X																		#1417	-01
SV-2A		Air			11:50	1	X																			-02
SV-3		Air			12:11	1	X																			-03
SV-4		Air			13:45	1	X																			-04
SV-5		Air			12:01	1	X																			-05
SV-6		Air			14:27	1	X																			-06
SV-7		Air			12:34	1	X																			-07
SV-8		Air			12:28	1	X																			-08
SV-9		Air			15:01	1	X																			-09
SV-10		Air			14:57	1	X																			-10

* Matrix: SS - Soil GW - Groundwater WW - WasteWater DW - Drinking Water OT - Other

Remarks: **ANALYZE CWCs ONLY**

Relinquished by: (Signature) <i>[Signature]</i>	Date: 12/19/14	Time: 16:00	Received by: (Signature) FEDEX	Samples returned via: <input type="checkbox"/> UPS <input checked="" type="checkbox"/> FedEx <input type="checkbox"/> Courier <input type="checkbox"/>
Relinquished by: (Signature) <i>[Signature]</i>	Date:	Time:	Received by: (Signature)	Temp: °C AMD 11/11/c
Relinquished by: (Signature) <i>[Signature]</i>	Date:	Time:	Received for lab by: (Signature) <i>[Signature]</i>	Date: 12-20-14 Time: 09:00

Hold #

Condition: (lab use only)
5W?

COC Seal Intact: Y N NA

pH Checked: NCF:

KPRG and Associates, Inc.

14665 West Lisbon Road, Suite 2B
Brookfield, WI 53005

Billing information:

Attn: Accounts Payable
414 Plaza Dr., Ste. 106
Westmont, IL 60559

Report to:
Patrick Allenstein, P.G.

Email To: patricka@KPRGinc.com

Project
Description: **Bask Dry Cleaners**

City/State
Collected: **WAUKESHA, WI**

Phone: **262-781-0475**

Client Project #

Lab Project #
KRPGBW-12-12-14

Fax:

10009

Collected by (print):

Site/Facility ID #
WAUKESHA, WI

P.O. #

Collected by (signature):

Rush? (Lab MUST Be Notified)

Date Results Needed

Immediately
Packed on Ice N **X** Y

___ Same Day 200%
___ Next Day 100%
___ Two Day 50%
___ Three Day 25%

Email? ___ No **X** Yes


FAX? **X** No ___ Yes

No.
of
Cntrs

Sample ID	Comp/Grab	Matrix *	Depth	Date	Time	No. of Cntrs	Analysis / Container / Preservative
SU-11	1HR	Air	—	12/18/14	14:48	1	X

TO 15 Summa, CIOC ONLY

Chain of Custody Page **2** of **2**



L.A.B S.C.I.E.N.C.E.S

YOUR LAB OF CHOICE

12065 Lebanon Rd
Mount Juliet, TN 37122
Phone: 615-758-5858
Phone: 800-767-5858
Fax: 615-758-5859



L# **L740309**

Table #

Acctnum: **KRPGBW**

Template: **T99112**

Prelogin: **P493506**

TSR: **341 - John Hawkins**

PB: **12-10-14**

Shipped Via: **FedEX Ground**

Rem./Contaminant Sample # (lab only)

* Matrix: SS - Soil GW - Groundwater WW - WasteWater DW - Drinking Water OT - Other

Remarks: **ANALYZE CIOCS ONLY**

pH _____ Temp _____

Flow _____ Other _____

Relinquished by: (Signature) <i>[Signature]</i>	Date: 12/19/14	Time: 16:00	Received by: (Signature) FEDEX	Samples returned via: <input type="checkbox"/> UPS <input checked="" type="checkbox"/> FedEx <input type="checkbox"/> Courier <input type="checkbox"/> _____	Hold #
Relinquished by: (Signature) <i>[Signature]</i>	Date:	Time:	Received by: (Signature)	Temp: _____ °C Bottles Received: Amb 11/11/14	Condition: (lab use only) CO JWS
Relinquished by: (Signature) <i>[Signature]</i>	Date:	Time:	Received for lab by: (Signature) [Signature]	Date: _____ Time: _____	COC Seal intact: ___ Y ___ N ___ NA pH Checked: _____ NCP: _____

ATTACHMENT 1
Data Notification Submittals



ENVIRONMENTAL CONSULTATION & REMEDIATION

KPRG and Associates, Inc.

TRANSMITTAL LETTER

January 5, 2015

Mr. Timothy Falvey
2007 Capella Court
Waukesha, WI 53186

Re: Soil Vapor Sampling Data

Dear Mr. Falvey:

Per our Access Agreement and Wisconsin Department of Natural Resources (WDNR) requirements under NR 716.14, attached is a copy of the second round of soil vapor sampling data from the vapor probe located on your property. As you know, we will be doing additional sampling on a quarterly basis to verify current data and we will provide the additional data as it is received. If there are any questions, please contact Mr. David Volkert of WDNR at 262-574-2166, Mr. Brian Riordan of Westbrook Shopping Center at 305-607-6624, or me at 262-781-0475.

Sincerely,
KPRG and Associates, Inc.

Richard R. Gnat, P.G.
Principal

cc: Brian Riordan, Westbrook Shopping Center
Greg Butts, Westbrook Shopping Center
David Volkert, WDNR

Table 1 - Summary of Soil Vapor Data for Detected Chlorinated Compounds Only - 2007 Capella Court

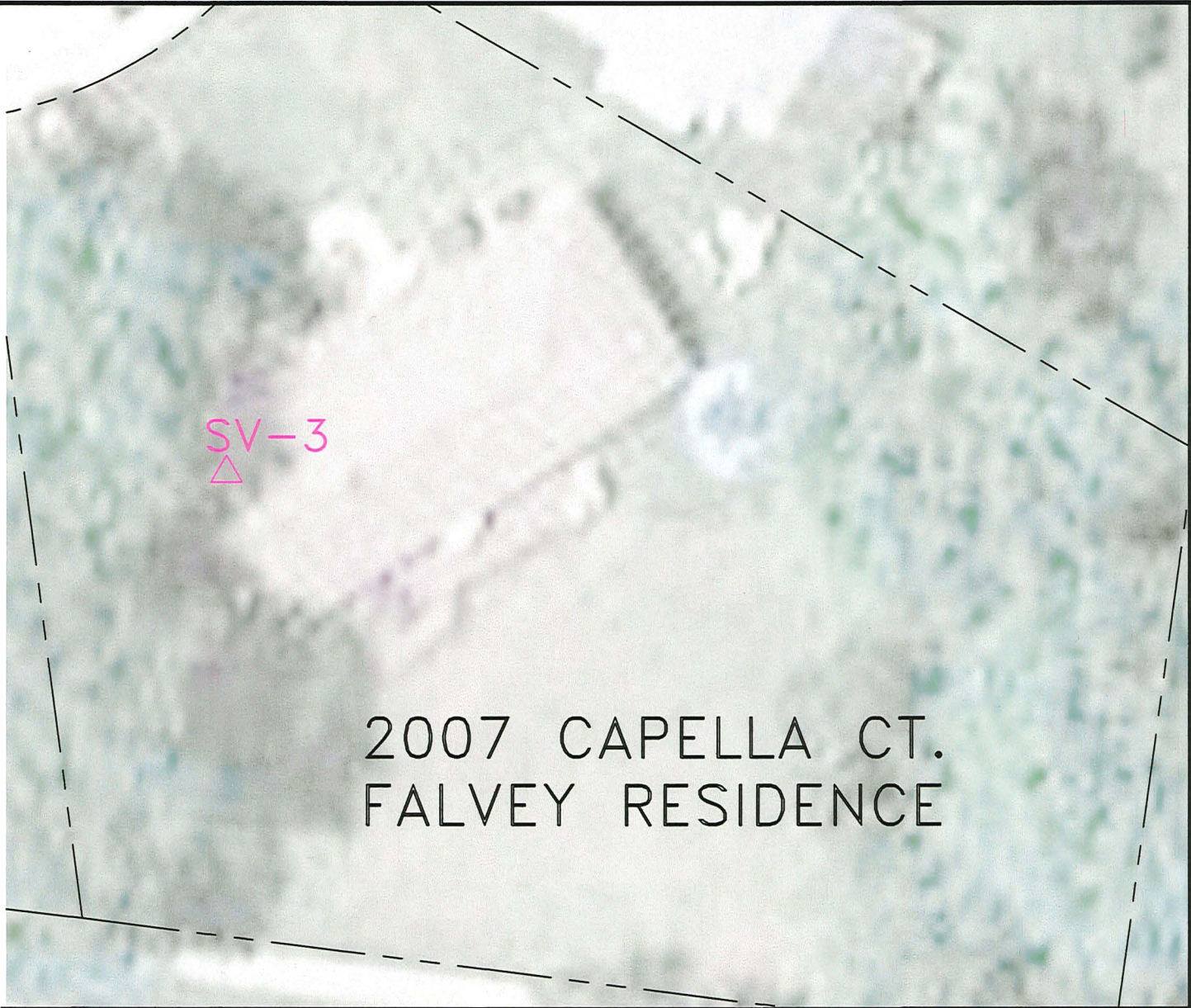
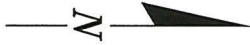
Sample Name		WDNR Residential VRSL		SV-3	
Parameter	Date	Sub-Slab	Deep Soil	09/30/14	12/27/14
1,1-Dichloroethene		2,100	21,000	<3.2	<0.79
cis-1,2-Dichloroethene		NC	NC	<3.2	<0.79
trans-1,2-Dichloroethene		NC	NC	<3.2	<0.79
Methylene Chloride		6,300	63,000	<2.8	NA
Tetrachloroethene		420	4,200	7,500	3,500
Trichloroethene		21	210	120	35

Notes : All values in ug/m³.

VRSL - Vapor Risk Screening Level

NC - Not Calculated

BOLD - Result exceeds the Deep Soil VRSL



LEGEND

SV-3  SOIL VAPOR PROBE LOCATION INSTALLED IN 2014

2007 CAPELLA CT.
FALVEY RESIDENCE

0  20'
APPROXIMATE SCALE

ENVIRONMENTAL CONSULTATION & REMEDIATION

K P R G

KPRG and Associates, Inc.

14665 West Lisbon Road, Suite 2B Brookfield, Wisconsin 53005 Telephone 262-781-0475 Facsimile 262-781-0478

414 Plaza Drive, Suite 106 Westmont, Illinois 60559 Telephone 630-325-1300 Facsimile 630-325-1593

SOIL VAPOR PROBE LOCATION

2007 CAPELLA COURT
WAUKESHA, WISCONSIN

Scale: 1" = 20'

Date: October 15, 2014

KPRG Project No. 10009

FIGURE 1



ENVIRONMENTAL CONSULTATION & REMEDIATION

KPRG and Associates, Inc.

TRANSMITTAL LETTER

January 5, 2015

Mr. Jeff Blanchard
2011 Capella Court
Waukesha, WI 53186

Re: Soil Vapor Sampling Data

Dear Mr. Blanchard:

Per our Access Agreement and Wisconsin Department of Natural Resources (WDNR) requirements under NR 716.14, attached is a copy of the second round of soil vapor sampling data from the vapor probe located on your property. As you know, we will be doing additional sampling on a quarterly basis to verify current data and we will provide the additional data as it is received. If there are any questions, please contact Mr. David Volkert of WDNR at 262-574-2166, Mr. Brian Riordan of Westbrook Shopping Center at 305-607-6624, or me at 262-781-0475.

Sincerely,
KPRG and Associates, Inc.

Richard R. Gnat, P.G.
Principal

cc: Brian Riordan, Westbrook Shopping Center
Greg Butts, Westbrook Shopping Center
David Volkert, WDNR

Table 1 - Summary of Soil Vapor Data for Detected Chlorinated Compounds Only - 2011 Capella Court

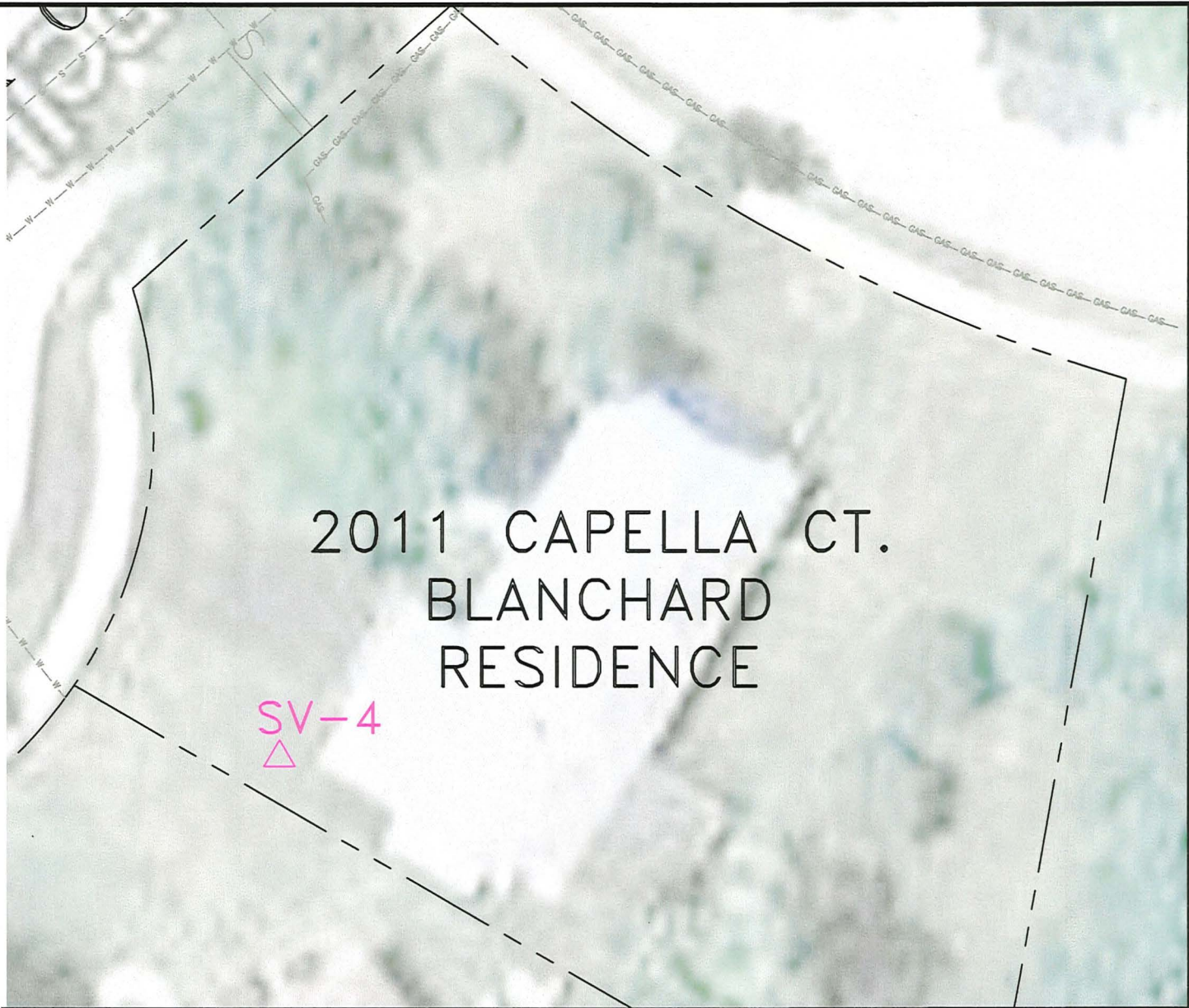
Sample Name		WDNR Residential VRSL		SV-4	
Parameter	Date	Sub-Slab	Deep Soil	09/30/14	12/27/14
1,1-Dichloroethene		2,100	21,000	<40	<0.79
cis-1,2-Dichloroethene		NC	NC	270	11
trans-1,2-Dichloroethene		NC	NC	310	10
Methylene Chloride		6,300	63,000	59	NA
Tetrachloroethene		420	4,200	81,000	1,100
Trichloroethene		21	210	6,400	160

Notes : All values in ug/m³.

VRSL - Vapor Risk Screening Level

NC - Not Calculated

BOLD - Result exceeds the Deep Soil VRSL



LEGEND

SV-4 ▲ SOIL VAPOR PROBE
LOCATION INSTALLED
IN 2014

SV-4
▲

0  20'
APPROXIMATE SCALE

ENVIRONMENTAL CONSULTATION & REMEDIATION

K P R G

KPRG and Associates, inc.

14665 West Lisbon Road, Suite 2B Brookfield, Wisconsin 53005 Telephone 262-781-0475 Facsimile 262-781-0478

414 Plaza Drive, Suite 106 Westmont, Illinois 60559 Telephone 630-325-1300 Facsimile 630-325-1593

SOIL VAPOR PROBE LOCATION

2011 CAPELLA COURT
WAUKESHA, WISCONSIN

Scale: 1" = 20'

Date: October 15, 2014

KPRG Project No. 10009

FIGURE 1



ENVIRONMENTAL CONSULTATION & REMEDIATION

KPRG and Associates, Inc.

TRANSMITTAL LETTER

January 5, 2015

Mr. Dan Johnson
2008 Capella Court
Waukesha, WI 53186

Re: Soil Vapor Sampling Data

Dear Mr. Johnson:

Per our Access Agreement and Wisconsin Department of Natural Resources (WDNR) requirements under NR 716.14, attached is a copy of the second round of soil vapor sampling data from the vapor probe located on your property. As you know, we will be doing additional sampling on a quarterly basis to verify current data and we will provide the additional data as it is received. If there are any questions, please contact Mr. David Volkert of WDNR at 262-574-2166, Mr. Brian Riordan of Westbrook Shopping Center at 305-607-6624, or me at 262-781-0475.

Sincerely,
KPRG and Associates, Inc.

A handwritten signature in cursive script that reads "Richard R. Gnat".

Richard R. Gnat, P.G.
Principal

cc: Brian Riordan, Westbrook Shopping Center
Greg Butts, Westbrook Shopping Center
David Volkert, WDNR

Table 1 - Summary of Soil Vapor Data for Detected Chlorinated Compounds Only - 2008 Capella Court

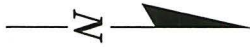
Sample Name		WDNR Residential VRSL		SV-5	
Parameter	Date	Sub-Slab	Deep Soil	09/30/14	12/27/14
1,1-Dichloroethene		2,100	21,000	3.3	<0.79
cis-1,2-Dichloroethene		NC	NC	<0.79	<0.79
trans-1,2-Dichloroethene		NC	NC	<0.79	<0.79
Methylene Chloride		6,300	63,000	0.94	NA
Tetrachloroethene		420	4,200	4.5	<1.4
Trichloroethene		21	210	<1.1	<1.1

Notes : All values in ug/m³.

VRSL - Vapor Risk Screening Level

NC - Not Calculated

BOLD - Result exceeds the Deep Soil VRSL



LEGEND

SV-5  SOIL VAPOR PROBE
LOCATION INSTALLED
IN 2014

2008 CAPELLA CT.
JOHNSON RESIDENCE

SV-5


ENVIRONMENTAL CONSULTATION & REMEDIATION

K P R G

KPRG and Associates, inc.

14665 West Lisbon Road, Suite 2B Brookfield, Wisconsin 53005 Telephone 262-781-0475 Facsimile 262-781-0478

414 Plaza Drive, Suite 106 Westmont, Illinois 60559 Telephone 630-325-1300 Facsimile 630-325-1593

SOIL VAPOR PROBE LOCATION

2008 CAPELLA COURT
WAUKESHA, WISCONSIN

Scale: 1" = 20'

Date: October 15, 2014

KPRG Project No. 10009

FIGURE 1

0  20'
APPROXIMATE SCALE



ENVIRONMENTAL CONSULTATION & REMEDIATION

KPRG and Associates, Inc.

TRANSMITTAL LETTER

January 5, 2015

Ms. June Sager
2129 Sunnyside Drive
Waukesha, WI 53186

Re: Soil Vapor Sampling Data

Dear Ms. Sager:

Per our Access Agreement and Wisconsin Department of Natural Resources (WDNR) requirements under NR 716.14, attached is a copy of the second round of soil vapor sampling data from the vapor probe located on your property. As you know, we will be doing additional sampling on a quarterly basis to verify current data and we will provide the additional data as it is received. If there are any questions, please contact Mr. David Volkert of WDNR at 262-574-2166, Mr. Brian Riordan of Westbrook Shopping Center at 305-607-6624, or me at 262-781-0475.

Sincerely,
KPRG and Associates, Inc.

Richard R. Gnat, P.G.
Principal

cc: Brian Riordan, Westbrook Shopping Center
Greg Butts, Westbrook Shopping Center
David Volkert, WDNR

Table 1 - Summary of Soil Vapor Data for Detected Chlorinated Compounds Only - 2129 Sunnyside Drive

Sample Name		WDNR Residential VRSL		SV-6	
Parameter	Date	Sub-Slab	Deep Soil	09/30/14	12/27/14
1,1-Dichloroethene		2,100	21,000	1.3	<0.79
cis-1,2-Dichloroethene		NC	NC	<0.79	<0.79
trans-1,2-Dichloroethene		NC	NC	<0.79	<0.79
Methylene Chloride		6,300	63,000	0.8	NA
Tetrachloroethene		420	4,200	8.8	1.5
Trichloroethene		21	210	<1.1	<1.1

Notes : All values in ug/m³.

VRSL - Vapor Risk Screening Level

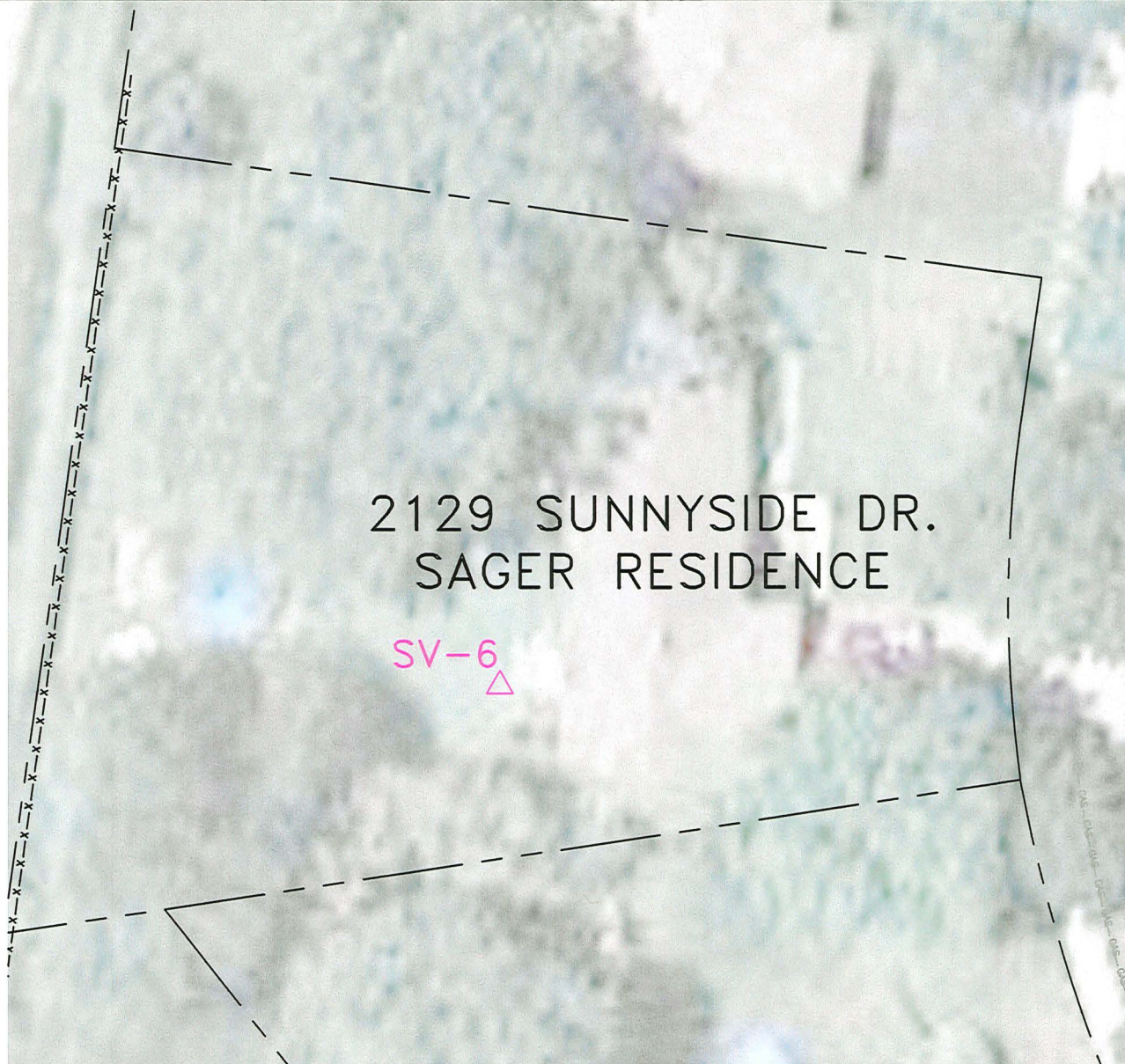
NC - Not Calculated

BOLD - Result exceeds the Deep Soil VRSL



LEGEND

SV-6  SOIL VAPOR PROBE LOCATION
INSTALLED IN 2014



0  25'
APPROXIMATE SCALE

ENVIRONMENTAL CONSULTATION & REMEDIATION		SOIL VAPOR PROBE LOCATION	
K P R G KPRG and Associates, inc.		2129 SUNNYSIDE DRIVE WAUKESHA, WISCONSIN	
14665 West Lisbon Road, Suite 28 Brookfield, Wisconsin 53005 Telephone 262-781-0475 Facsimile 262-781-0478		Scale: 1" = 25'	Date: October 15, 2014
414 Plaza Drive, Suite 106 Westmont, Illinois 60559 Telephone 630-325-1300 Facsimile 630-325-1593		KPRG Project No. 10009	FIGURE 1

\\c:\projects\workbook_shipping_center\soil_vapor_probes.asi-bulk.dwg



ENVIRONMENTAL CONSULTATION & REMEDIATION

KPRG and Associates, Inc.

TRANSMITTAL LETTER

January 5, 2015

Mr. Kenneth Lex
2157 Rambling Rose Road
Waukesha, WI 53186

Re: Soil Vapor Sampling Data

Dear Mr. Lex:

Per our Access Agreement and Wisconsin Department of Natural Resources (WDNR) requirements under NR 716.14, attached is a copy of the first round of soil vapor sampling data from the vapor probe located on your property. As you know, we will be doing additional sampling on a quarterly basis to verify current data and we will provide the additional data as it is received. If there are any questions, please contact Mr. David Volkert of WDNR at 262-574-2166, Mr. Brian Riordan of Westbrook Shopping Center at 305-607-6624, or me at 262-781-0475.

Sincerely,
KPRG and Associates, Inc.

Richard R. Gnat, P.G.
Principal

cc: Brian Riordan, Westbrook Shopping Center
Greg Butts, Westbrook Shopping Center
David Volkert, WDNR

Table 1 - Summary of Soil Vapor Data for Detected Chlorinated Compounds Only - 2157 Rambling Rose Road

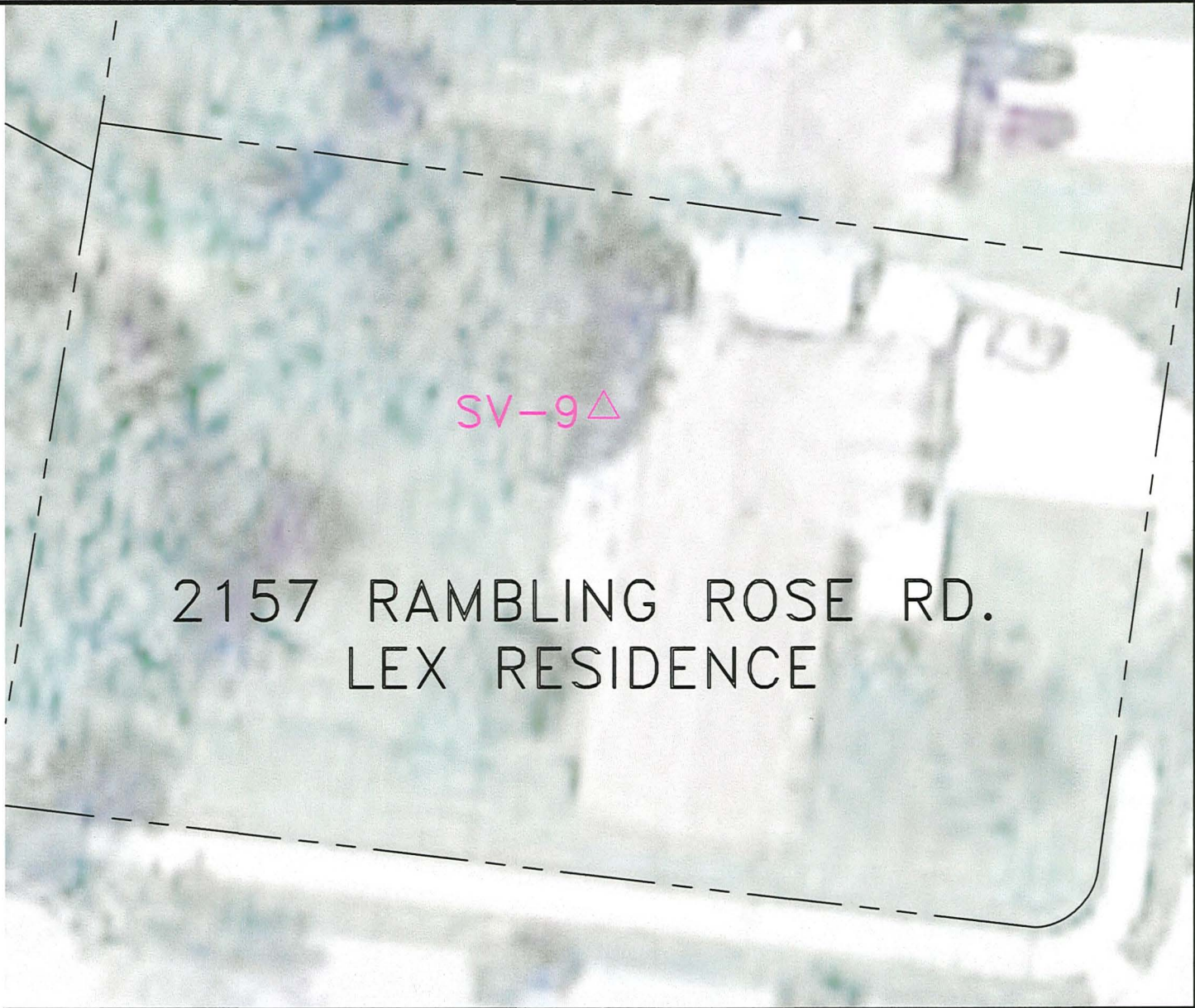
Sample Name		WDNR Residential VRSL		SV-9
Parameter	Date	Sub-Slab	Deep Soil	12/27/14
1,1-Dichloroethene		2,100	21,000	<6.3
cis-1,2-Dichloroethene		NC	NC	180
trans-1,2-Dichloroethene		NC	NC	<6.3
Methylene Chloride		6,300	63,000	NA
Tetrachloroethene		420	4,200	5,000
Trichloroethene		21	210	91

Notes : All values in ug/m³.

VRSL - Vapor Risk Screening Level

NC - Not Calculated

BOLD - Result exceeds the Deep Soil VRSL



LEGEND

SV-9  SOIL VAPOR PROBE
LOCATION INSTALLED
IN 2014

2157 RAMBLING ROSE RD.
LEX RESIDENCE

0  20'
APPROXIMATE SCALE

ENVIRONMENTAL CONSULTATION & REMEDIATION

K P R G

KPRG and Associates, inc.

14665 West Lisbon Road, Suite 2B Brookfield, Wisconsin 53005 Telephone 262-781-0475 Facsimile 262-781-0478

414 Plaza Drive, Suite 106 Westmont, Illinois 60559 Telephone 630-325-1300 Facsimile 630-325-1593

SOIL VAPOR PROBE LOCATION

2157 RAMBLING ROSE ROAD
WAUKESHA, WISCONSIN

Scale: 1" = 20'

Date: January 5, 2015

KPRG Project No. 10009

FIGURE 1



ENVIRONMENTAL CONSULTATION & REMEDIATION

KPRG and Associates, Inc.

TRANSMITTAL LETTER

January 5, 2015

Mr. Michael Stockinger
2151 Rambling Rose Road
Waukesha, WI 53186

Re: Soil Vapor Sampling Data

Dear Mr. Stockinger:

Per our Access Agreement and Wisconsin Department of Natural Resources (WDNR) requirements under NR 716.14, attached is a copy of the first round of soil vapor sampling data from the vapor probe located on your property. As you know, we will be doing additional sampling on a quarterly basis to verify current data and we will provide the additional data as it is received. If there are any questions, please contact Mr. David Volkert of WDNR at 262-574-2166, Mr. Brian Riordan of Westbrook Shopping Center at 305-607-6624, or me at 262-781-0475.

Sincerely,
KPRG and Associates, Inc.

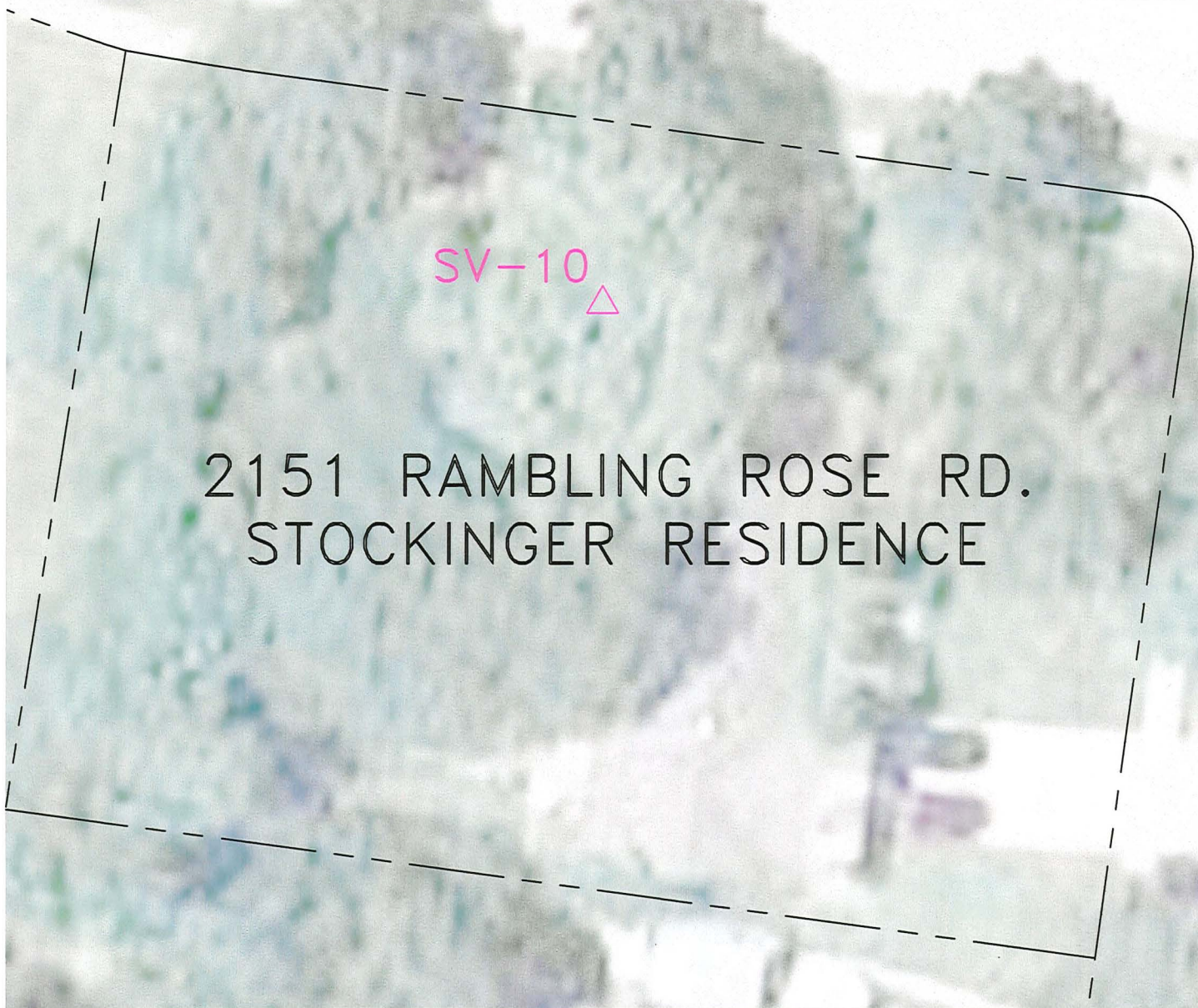
Richard R. Gnat, P.G.
Principal

cc: Brian Riordan, Westbrook Shopping Center
Greg Butts, Westbrook Shopping Center
David Volkert, WDNR

Table 1 - Summary of Soil Vapor Data for Detected Chlorinated Compounds Only - 2151 Rambling Rose Road

Sample Name		WDNR Residential VRSL		SV-10
Parameter	Date	Sub-Slab	Deep Soil	12/27/14
1,1-Dichloroethene		2,100	21,000	<0.79
cis-1,2-Dichloroethene		NC	NC	6.3
trans-1,2-Dichloroethene		NC	NC	1.3
Methylene Chloride		6,300	63,000	NA
Tetrachloroethene		420	4,200	750
Trichloroethene		21	210	33


Notes : All values in ug/m³.
 VRSL - Vapor Risk Screening Level
 NC - Not Calculated
BOLD - Result exceeds the Deep Soil VRSL




SV-10 

2151 RAMBLING ROSE RD.
STOCKINGER RESIDENCE

LEGEND

SV-10  SOIL VAPOR PROBE
LOCATION INSTALLED
IN 2014



ENVIRONMENTAL CONSULTATION & REMEDIATION		SOIL VAPOR PROBE LOCATION	
 K P R G KPRG and Associates, inc.		2151 RAMBLING ROSE ROAD WAUKESHA, WISCONSIN	
		Scale: 1" = 20'	Date: January 5, 2015
14665 West Lisbon Road, Suite 2B Brookfield, Wisconsin 53005 Telephone 262-781-0475 Facsimile 262-781-0478		KPRG Project No. 10009	
414 Plaza Drive, Suite 106 Westmont, Illinois 60559 Telephone 630-325-1300 Facsimile 630-325-1593		FIGURE 1	

D:\Projects\Westmont\Shopping Center\Soil Vapor Probes\SV-10\1-5-15.dwg



ENVIRONMENTAL CONSULTATION & REMEDIATION

KPRG and Associates, Inc.

TRANSMITTAL LETTER

January 5, 2015

Mr. Paul Day
City of Waukesha
Engineering Department
130 Delafield Street
Waukesha, WI 53188

Re: Soil Vapor Sampling Data

Dear Mr. Day:

Per Wisconsin Department of Natural Resources (WDNR) requirements under NR 716.14, attached is a copy of the first/second round of soil vapor sampling data from the vapor probes located on your property. We will be doing additional sampling on a quarterly basis to verify current data and we will provide the additional data as it is received. If there are any questions, please contact Mr. David Volkert of WDNR at 262-574-2166, Mr. Brian Riordan of Westbrook Shopping Center at 305-607-6624, or me at 262-781-0475.

Sincerely,
KPRG and Associates, Inc.

Richard R. Gnat, P.G.
Principal

cc: Brian Riordan, Westbrook Shopping Center
Greg Butts, Westbrook Shopping Center
David Volkert, WDNR

Table 1 - Summary of Soil Vapor Data for Detected Chlorinated Compounds Only
 City of Waukesha Right-of-Way Near Sunnyside Drive and Capella Court

Sample Name		WDNR Residential VRSL		SV-7		SV-8		SV-11
Parameter	Date	Sub-Slab	Deep Soil	09/30/14	12/27/14	09/30/14	12/27/14	12/27/14
1,1-Dichloroethene		2,100	21,000	<20	<0.79	<7.9	<0.79	<0.79
cis-1,2-Dichloroethene		NC	NC	<20	<0.79	<7.9	<0.79	<0.79
trans-1,2-Dichloroethene		NC	NC	<20	<0.79	<7.9	<0.79	<0.79
Methylene Chloride		6,300	63,000	<17	NA	<6.9	NA	NA
Tetrachloroethene		420	4,200	750	110	<14	<1.4	3.2
Trichloroethene		21	210	140	27	<11	<1.1	<1.1

Notes : All values in ug/m³.
 VRSL - Vapor Risk Screening Level
 NC - Not Calculated
BOLD - Result exceeds the Deep Soil VRSL



LEGEND

SV-7 Δ SOIL VAPOR PROBE
LOCATIONS INSTALLED
IN 2014



0 50'
APPROXIMATE SCALE

ENVIRONMENTAL CONSULTATION & REMEDIATION

K P R G

KPRG and Associates, inc.

14665 West Lisbon Road, Suite 28 Brookfield, Wisconsin 53005 Telephone 262-781-0475 Facsimile 262-781-0478

414 Plaza Drive, Suite 106 Westmont, Illinois 60559 Telephone 630-325-1300 Facsimile 630-325-1593

RIGHT-OF-WAY SOIL VAPOR PROBE LOCATION

SUNNYSIDE DRIVE RIGHT-OF-WAY
WAUKESHA, WISCONSIN

Scale: 1" = 50'

Date: January 5, 2015

KPRG Project No. 10009

FIGURE 1