

K P R G

ENVIRONMENTAL CONSULTATION & REMEDIATION

KPRG and Associates, Inc.

STATUS REPORT

May 27, 2021

Mr. J. Gregory Moll, P.G.
Wisconsin Department of Natural Resources
2300 N. Dr. Martin Luther King Drive
Milwaukee, WI 53212

VIA E-mail and FedEx

KPRG Project 10009

Re: Status Report May 2021
Former Bask Dry Cleaners – Waukesha, WI
BRRTS# 02-68-297669, FID# 268188800

Dear Mr. Moll:

KPRG and Associates, Inc. (KPRG), completed a full round of groundwater sampling for the above referenced site. The wells were sampled on during the week of April 19th, 2021 and analyzed for chlorinated volatile organic compounds (CVOCs).

A monitoring well location map is provided on Figure 1 and a groundwater flow map is provided on Figure 2. Table 1 provides a summary of the groundwater elevation data and Table 2 provides a summary of the CVOC data. A copy of the analytical data package is included in Attachment 1. An updated isoconcentration contour map for tetrachloroethene (PCE) and trichloroethene (TCE) is provided on Figure 3.

A review of the data indicates that the extent of impacts has been defined.

If there are any questions, please contact me at 262-781-0475.

Sincerely,
KPRG and Associates, Inc.



for

Patrick Allenstein, P.G.
Senior Geologist

cc: Mr. Greg Butts, former Bask Dry Cleaners
Mr. Donald Gallo, Axley Brynelson, LLP

FIGURES



LEGEND

MW-12 EXISTING MONITORING WELL, PIEZOMETER LOCATION

MW-1 ABANDONED MONITORING WELL, PIEZOMETER LOCATION

ENVIRONMENTAL CONSULTATION & REMEDIATION

K P R G

KPRG and Associates, Inc.

14665 West Lisbon Road, Suite 1A Brookfield, Wisconsin 53005 Telephone 262-781-0475 Facsimile 262-781-0478

414 Plaza Drive, Suite 106 Westmont, Illinois 60559 Telephone 630-325-1300 Facsimile 630-325-1593

MONITORING WELLS LOCATION MAP

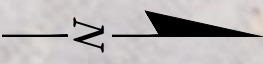
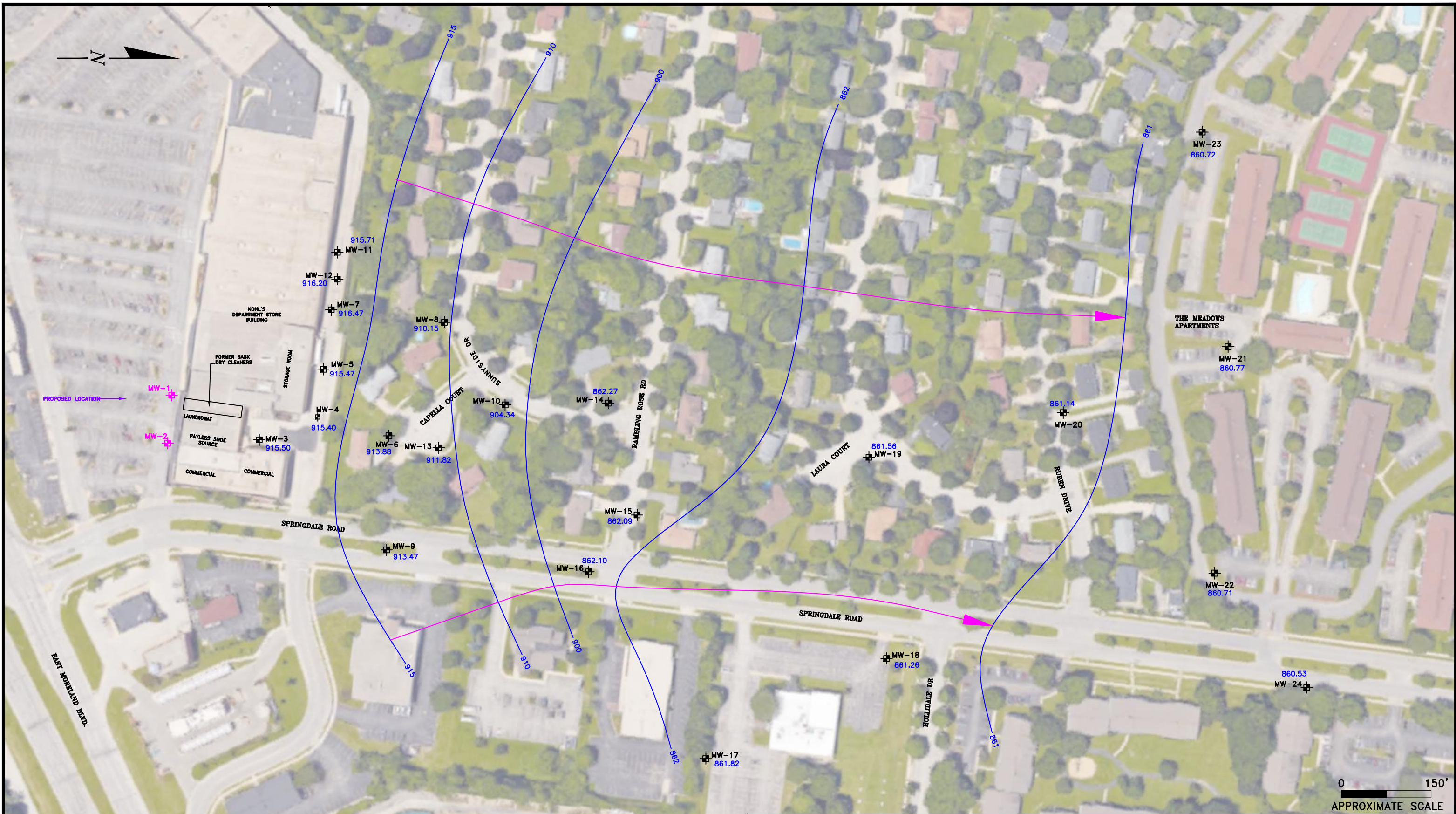
WESTBROOK SHOPPING CENTER
WAUKESHA, WISCONSIN

Scale: 1" = 130'

Date: January 26, 2021

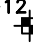

KPRG Project No. 10009



FIGURE 1



0 150'
APPROXIMATE SCALE

LEGEND

- MW-12  EXISTING MONITORING WELL, PIEZOMETER LOCATION
- MW-2  ABANDONED LOCATION

-  GROUNDWATER CONTOUR
-  GROUNDWATER FLOW DIRECTION

ENVIRONMENTAL CONSULTATION & REMEDIATION

K P R G

KPRG and Associates, inc.

14665 West Lisbon Road, Suite 1A Brookfield, Wisconsin 53005 Telephone 262-781-0475 Facsimile 262-781-0478

414 Plaza Drive, Suite 106 Westmont, Illinois 60559 Telephone 630-325-1300 Facsimile 630-325-1593

GROUNDWATER CONTOUR MAP APRIL 2021

**WESTBROOK SHOPPING CENTER
WAUKESHA, WISCONSIN**

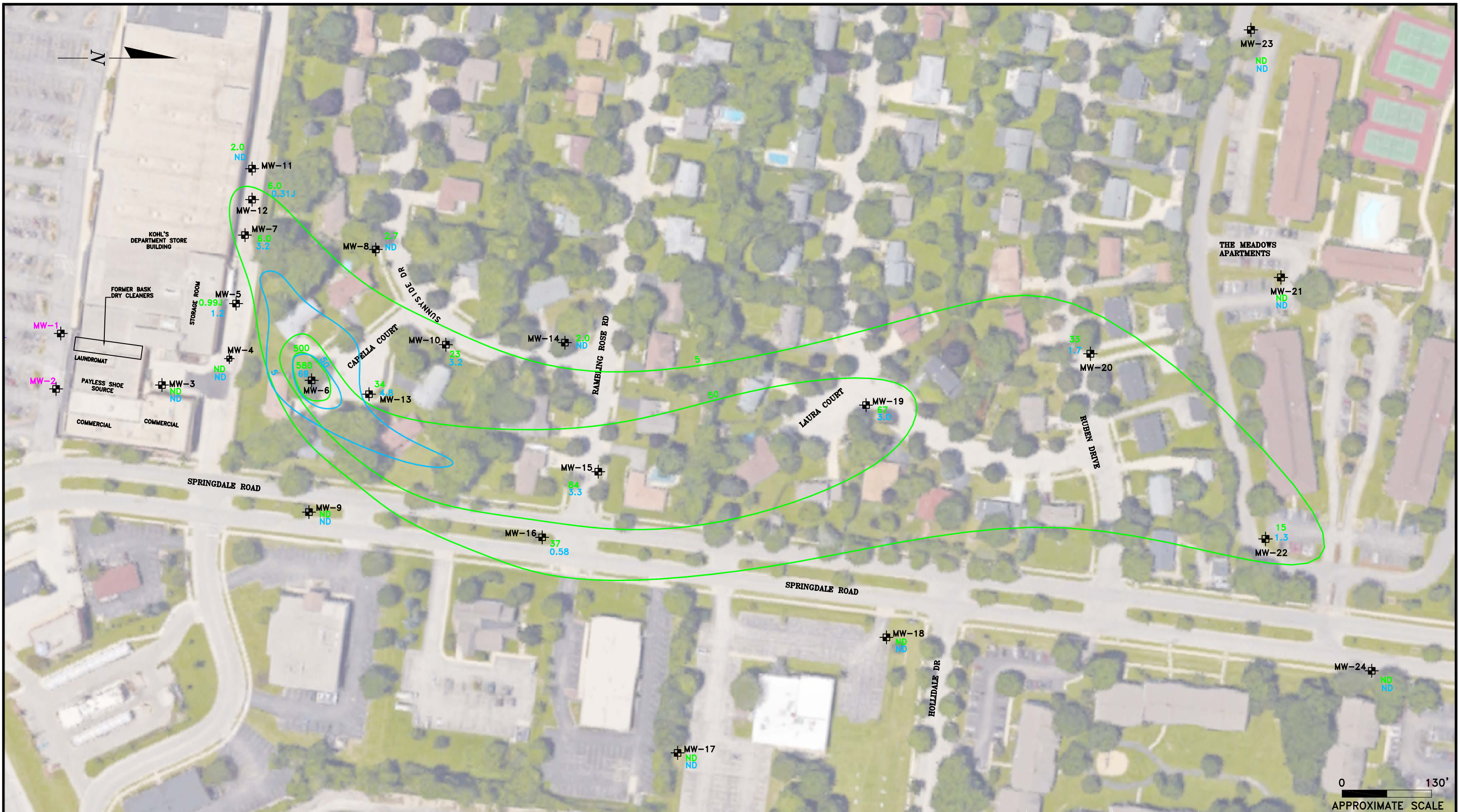
Scale: 1" = 150'

Date: May 26, 2021

KPRG Project No. 10009

FIGURE 2

S:\projects\westbrook shopping center\arc\arc\mxd\gw_2021.mxd



LEGEND

MW-12 EXISTING MONITORING WELL, PIEZOMETER LOCATION
 MW-2 ABANDONED MONITORING WELL LOCATION

5 TCE CONCENTRATION CONTOUR
 5 PCE CONCENTRATION CONTOUR

TCE ENFORCEMENT STANDARD = 5 µg/L
 PCE ENFORCEMENT STANDARD = 5 µg/L

ENVIRONMENTAL CONSULTATION & REMEDIATION

K P R G

KPRG and Associates, Inc.

14665 West Lisbon Road, Suite 1A Brookfield, Wisconsin 53005 Telephone 262-781-0475 Facsimile 262-781-0478

414 Plaza Drive, Suite 106 Westmont, Illinois 60559 Telephone 630-325-1300 Facsimile 630-325-1593

EXTENT OF GROUNDWATER IMPACTS
 APRIL 2021

WESTBROOK SHOPPING CENTER
 WAUKESHA, WISCONSIN

Scale: 1" = 130'

Date: May 27, 2021

KPRG Project No. 10009

FIGURE 3

0 130'
 APPROXIMATE SCALE

\projects\westbrook-shopping-center\anal\extent_of_gw.dwg

TABLES

Table 1. Groundwater Elevation Table - Former Bask Dry Cleaners, Westbrook Shopping Center, Waukesha, WI

DATE	USGS Datum Elevations		10/22/2014		6/30/2015		6/1/2016		9/20/2016		5/22/2017		6/23/2017		9/29/2017	
	WELL	Ground	Top of Casing	Depth to Water	Water Elev	Depth to Water	Water Elev	Depth to Water	Water Elev	Depth to Water	Water Elev	Depth to Water	Water Elev	Depth to Water	Water Elev	Depth to Water
MW-1	941.64	941.34	26.29	914.96	27.13	914.12	26.42	914.92	26.61	914.73	25.29	916.05	25.09	916.25	NM	NM
MW-2	942.41	942.15	27.04	915.03	27.91	914.16	27.14	915.01	27.30	914.85	26.16	915.99	26.00	916.15	NM	NM
MW-3	937.79	937.48	23.12	914.20	23.50	913.82	23.13	914.35	23.35	914.13	22.96	914.52	22.01	915.47	NM	NM
MW-4	932.33	932.09	17.90	913.99	DRY	DRY	17.94	914.15	18.34	913.75	16.70	915.39	16.81	915.28	NM	NM
MW-5	934.42	934.19	20.02	914.06	20.68	913.40	19.93	914.26	20.15	914.04	18.65	915.54	18.71	915.48	NM	NM
MW-6	925.93	925.78	13.35	912.30	13.99	911.66	13.14	912.64	13.59	912.19	11.65	914.13	12.05	913.73	NM	NM
MW-7	935.95	935.90	20.56	915.02	21.27	914.31	20.56	915.34	20.66	915.24	19.54	916.36	19.45	916.45	NM	NM
MW-8	923.36	923.05	13.84	909.08	14.09	908.83	14.61	908.44	13.75	909.30	12.43	910.62	12.91	910.14	NM	NM
MW-9	919.56	919.44	7.11	912.12	8.21	911.02	7.30	912.14	7.70	911.74	5.74	913.70	5.96	913.48	NM	NM
MW-10	918.24	917.99	14.86	903.02	15.15	902.73	13.82	904.17	15.29	902.70	11.68	906.31	12.66	905.33	NM	NM
MW-11	935.89	935.81	21.21	NS	22.00	NS	21.22	914.59	21.38	914.43	19.93	915.88	19.92	915.89	NM	NM
MW-12	935.52	935.15	19.65	NS	20.69	NS	19.95	915.20	20.05	915.10	19.03	916.12	18.81	916.34	NM	NM
MW-13	922.85	922.36	11.72	NS	11.72	NS	11.42	910.94	11.05	911.31	10.39	911.97	10.84	911.52	NM	NM
MW-14	908.43	908.25	NI	NI	NI	NI	47.69	860.56	47.98	860.27	45.69	862.56	45.21	863.04	NM	NM
MW-15	903.79	903.57	NI	NI	NI	NI	43.14	860.43	43.44	860.13	41.15	862.42	40.66	862.91	NM	NM
MW-16	903.88	903.61	NI	NI	NI	NI	43.15	860.46	43.44	860.17	21.17	862.44	40.68	862.93	NM	NM
MW-17	894.74	894.24	NI	NI	NI	NI	NI	NI	NI	NI	32.06	862.18	31.61	862.63	31.85	862.39
MW-18	898.15	898.48	NI	NI	NI	NI	NI	NI	NI	NI	36.43	862.05	35.99	862.49	36.35	862.13
MW-19	894.84	895.38	NI	NI	NI	NI	NI	NI	NI	NI	30.96	864.42	32.41	862.97	32.69	862.69
MW-20	890.20	890.44	NI	NI	NI	NI	NI	NI	NI	NI	N	N	NI	NI	NI	NI
MW-21	893.52	893.13	NI	NI	NI	NI	NI	NI	NI	NI	N	N	NI	NI	NI	NI
MW-22	893.45	893.21	NI	NI	NI	NI	NI	NI	NI	NI	N	N	NI	NI	NI	NI
MW-23	887.88	887.53	NI	NI	NI	NI	NI	NI	NI	NI	N	N	NI	NI	NI	NI
PZ-1	932.34	933.97	39.95	891.87	40.38	891.44	40.14	893.83	39.21	894.76	40.00	893.97	39.82	894.15	NM	NM
PZ-2	934.27	932.02	DRY	DRY	DRY	DRY	DRY	DRY	DRY	DRY	DRY	DRY	DRY	DRY	NM	NM
PZ-3	NS	923.13	DRY	DRY	DRY	DRY	DRY	DRY	DRY	DRY	DRY	DRY	DRY	DRY	NM	NM

DATE	USGS Datum Elevations		7/16/2018		9/21/2018		12/19/2018		3/19/2019		3/12/2020		4/19/2021	
	WELL	Ground	Top of Casing	Depth to Water	Water Elev	Depth to Water	Water Elev	Depth to Water	Water Elev	Depth to Water	Water Elev	Depth to Water	Water Elev	Depth to Water
MW-1	941.74	941.34	25.41	915.93	NM	NM	NM	NM	NM	NM	NM	NM	NM	NM
MW-2	942.45	942.15	NM	NM	NM	NM	NM	NM	NM	NM	NM	NM	NM	NM
MW-3	937.87	937.48	22.42	915.06	NM	NM	NM	NM	NM	NM	21.19	916.29	21.98	915.50
MW-4	932.59	932.09	17.23	914.86	NM	NM	NM	NM	NM	NM	15.73	916.36	16.60	915.49
MW-5	934.53	934.19	19.21	914.98	NM	NM	NM	NM	NM	NM	17.89	916.30	18.72	915.47
MW-6	926.08	925.78	12.42	913.36	NM	NM	NM	NM	NM	NM	11.02	914.76	11.90	913.88
MW-7	936.12	935.90	19.94	915.96	NM	NM	NM	NM	NM	NM	18.53	917.37	19.43	916.47
MW-8	923.47	923.05	13.25	909.80	NM	NM	NM	NM	NM	NM	12.12	910.93	12.90	910.15
MW-9	919.63	919.44	6.58	912.86	NM	NM	NM	NM	NM	NM	4.93	914.51	5.97	913.47
MW-10	918.30	917.99	13.49	904.50	NM	NM	NM	NM	NM	NM	12.30	905.69	13.65	904.34
MW-11	935.89	935.69	20.32	915.37	NM	NM	NM	NM	NM	NM	19.01	916.68	19.98	915.71
MW-12	935.52	935.15	19.28	915.87	NM	NM	NM	NM	NM	NM	18.11	917.04	18.95	916.20
MW-13	922.85	922.36	10.96	911.40	NM	NM	NM	NM	NM	NM	9.94	912.42	10.54	911.82
MW-14	908.43	908.25	46.34	861.91	NM	NM	NM	NM	NM	NM	44.23	864.02	45.98	862.27
MW-15	903.79	903.57	41.84	861.73	NM	NM	NM	NM	NM	NM	39.77	863.80	41.48	862.09
MW-16	903.88	903.61	41.83	861.78	NM	NM	NM	NM	NM	NM	39.80	863.81	41.51	862.10
MW-17	894.74	894.24	32.68	861.56	NM	NM	NM	NM	NM	NM	30.77	863.47	32.42	861.82
MW-18	898.48	898.15	37.20	860.95	NM	NM	NM	NM	NM	NM	35.27	862.88	36.89	861.26
MW-19	895.38	894.84	33.59	861.25	32.91	861.93	NM	NM	NM	NM	31.62	863.22	33.28	861.56
MW-20	890.44	890.20	29.43	860.77	28.64	861.56	28.17	862.03	28.25	861.95	27.45	862.75	29.06	861.14
MW-21	893.52	893.13	NI	NI	NI	NI	31.44	861.69	31.53	861.60	30.78	862.35	32.36	860.77
MW-22	893.45	893.21	NI	NI	NI	NI	NI	NI	NM	NM	31.01	862.20	32.50	860.71
MW-23	887.88	887.53	NI	NI	NI	NI	NI	NI	NM	NM	25.08	862.45	26.81	860.72
MW-24	894.03	893.73	NI	NI	NI	NI	NI	NI	NM	NM	NI	NI	33.20	860.53
PZ-1	934.42	933.97	40.24	893.73	NM	NM	NM	NM	NM	NM	NM	NM	NM	NM
PZ-2	932.59	932.02	DRY	DRY	NM	NM	NM	NM	NM	NM	NM	NM	NM	NM
PZ-3	923.57	923.13	DRY	DRY	NM	NM	NM	NM	NM	NM	NM	NM	NM	NM

Notes: All elevation data in feet above mean sea level. NI - Not Installed NS- Not Surveyed
 All depth to water data in feet below top of casing. N/A- Not Measured DRY- Well was dry

ATTACHMENT 1
ANALYTICAL DATA PACKAGE

ANALYTICAL REPORT

Eurofins TestAmerica, Chicago
2417 Bond Street
University Park, IL 60484
Tel: (708)534-5200

Laboratory Job ID: 500-198099-1

Client Project/Site: Former Bask Dry Cleaners - 10009

For:

KPRG and Associates, Inc.
14665 West Lisbon Road,
Suite 1A
Brookfield, Wisconsin 53005

Attn: Mr. Rich Gnat



Authorized for release by:
5/6/2021 9:43:53 AM

Sandie Fredrick, Project Manager II
(920)261-1660
sandra.fredrick@eurofinset.com

LINKS

Review your project
results through
TotalAccess

Have a Question?



Visit us at:

www.eurofinsus.com/Env

The test results in this report meet all 2003 NELAC, 2009 TNI, and 2016 TNI requirements for accredited parameters, exceptions are noted in this report. This report may not be reproduced except in full, and with written approval from the laboratory. For questions please contact the Project Manager at the e-mail address or telephone number listed on this page.

This report has been electronically signed and authorized by the signatory. Electronic signature is intended to be the legally binding equivalent of a traditionally handwritten signature.

Results relate only to the items tested and the sample(s) as received by the laboratory.



Table of Contents

Cover Page	1
Table of Contents	2
Case Narrative	3
Detection Summary	4
Method Summary	7
Sample Summary	8
Client Sample Results	9
Definitions	35
QC Association	36
Surrogate Summary	37
QC Sample Results	38
Chronicle	42
Certification Summary	46
Chain of Custody	47
Receipt Checklists	50

Case Narrative

Client: KPRG and Associates, Inc.
Project/Site: Former Bask Dry Cleaners - 10009

Job ID: 500-198099-1

Job ID: 500-198099-1

Laboratory: Eurofins TestAmerica, Chicago

Narrative

Job Narrative 500-198099-1

Comments

No additional comments.

Receipt

The samples were received on 4/23/2021 9:30 AM. Unless otherwise noted below, the samples arrived in good condition, and where required, properly preserved and on ice. The temperature of the cooler at receipt was 1.2° C.

GC/MS VOA

Method 8260B: The following sample was diluted to bring the concentration of target analytes within the calibration range: MW-6 (500-198099-9). Elevated reporting limits (RLs) are provided.

Method 8260B: The matrix spike duplicate (MSD) for the following sample was analyzed outside the 12 hour tune window. No further action was taken. DUP-2 (500-198099-25)

No additional analytical or quality issues were noted, other than those described above or in the Definitions/Glossary page.



Detection Summary

Client: KPRG and Associates, Inc.
Project/Site: Former Bask Dry Cleaners - 10009

Job ID: 500-198099-1

Client Sample ID: MW-3

Lab Sample ID: 500-198099-1

No Detections.

Client Sample ID: MW-4

Lab Sample ID: 500-198099-2

No Detections.

Client Sample ID: MW-5

Lab Sample ID: 500-198099-3

Analyte	Result	Qualifier	RL	MDL	Unit	Dil Fac	D	Method	Prep Type
cis-1,2-Dichloroethene	1.9		1.0	0.41	ug/L	1		8260B	Total/NA
Tetrachloroethene	0.99	J	1.0	0.37	ug/L	1		8260B	Total/NA
trans-1,2-Dichloroethene	3.8		1.0	0.35	ug/L	1		8260B	Total/NA
Trichloroethene	1.2		0.50	0.16	ug/L	1		8260B	Total/NA

Client Sample ID: MW-7

Lab Sample ID: 500-198099-4

Analyte	Result	Qualifier	RL	MDL	Unit	Dil Fac	D	Method	Prep Type
Tetrachloroethene	6.0		1.0	0.37	ug/L	1		8260B	Total/NA
Trichloroethene	3.2		0.50	0.16	ug/L	1		8260B	Total/NA

Client Sample ID: MW-12

Lab Sample ID: 500-198099-5

Analyte	Result	Qualifier	RL	MDL	Unit	Dil Fac	D	Method	Prep Type
cis-1,2-Dichloroethene	0.93	J	1.0	0.41	ug/L	1		8260B	Total/NA
Tetrachloroethene	6.0		1.0	0.37	ug/L	1		8260B	Total/NA
Trichloroethene	0.31	J	0.50	0.16	ug/L	1		8260B	Total/NA

Client Sample ID: MW-11

Lab Sample ID: 500-198099-6

Analyte	Result	Qualifier	RL	MDL	Unit	Dil Fac	D	Method	Prep Type
Tetrachloroethene	2.0		1.0	0.37	ug/L	1		8260B	Total/NA

Client Sample ID: MW-9

Lab Sample ID: 500-198099-7

No Detections.

Client Sample ID: MW-16

Lab Sample ID: 500-198099-8

Analyte	Result	Qualifier	RL	MDL	Unit	Dil Fac	D	Method	Prep Type
Tetrachloroethene	37		1.0	0.37	ug/L	1		8260B	Total/NA
Trichloroethene	0.58		0.50	0.16	ug/L	1		8260B	Total/NA

Client Sample ID: MW-6

Lab Sample ID: 500-198099-9

Analyte	Result	Qualifier	RL	MDL	Unit	Dil Fac	D	Method	Prep Type
1,1-Dichloroethene	0.41	J	1.0	0.39	ug/L	1		8260B	Total/NA
trans-1,2-Dichloroethene	9.0		1.0	0.35	ug/L	1		8260B	Total/NA
Trichloroethene	69		0.50	0.16	ug/L	1		8260B	Total/NA
Vinyl chloride	9.8		1.0	0.20	ug/L	1		8260B	Total/NA
cis-1,2-Dichloroethene - DL	550		10	4.1	ug/L	10		8260B	Total/NA
Tetrachloroethene - DL	580		10	3.7	ug/L	10		8260B	Total/NA

Client Sample ID: MW-13

Lab Sample ID: 500-198099-10

Analyte	Result	Qualifier	RL	MDL	Unit	Dil Fac	D	Method	Prep Type
cis-1,2-Dichloroethene	51		1.0	0.41	ug/L	1		8260B	Total/NA
Tetrachloroethene	34		1.0	0.37	ug/L	1		8260B	Total/NA

This Detection Summary does not include radiochemical test results.

Eurofins TestAmerica, Chicago

Detection Summary

Client: KPRG and Associates, Inc.
Project/Site: Former Bask Dry Cleaners - 10009

Job ID: 500-198099-1

Client Sample ID: MW-13 (Continued)

Lab Sample ID: 500-198099-10

Analyte	Result	Qualifier	RL	MDL	Unit	Dil Fac	D	Method	Prep Type
trans-1,2-Dichloroethene	1.6		1.0	0.35	ug/L	1		8260B	Total/NA
Trichloroethene	4.8		0.50	0.16	ug/L	1		8260B	Total/NA
Vinyl chloride	0.92	J	1.0	0.20	ug/L	1		8260B	Total/NA

Client Sample ID: MW-8

Lab Sample ID: 500-198099-11

Analyte	Result	Qualifier	RL	MDL	Unit	Dil Fac	D	Method	Prep Type
Tetrachloroethene	2.7		1.0	0.37	ug/L	1		8260B	Total/NA

Client Sample ID: MW-10

Lab Sample ID: 500-198099-12

Analyte	Result	Qualifier	RL	MDL	Unit	Dil Fac	D	Method	Prep Type
cis-1,2-Dichloroethene	88		1.0	0.41	ug/L	1		8260B	Total/NA
Tetrachloroethene	23		1.0	0.37	ug/L	1		8260B	Total/NA
trans-1,2-Dichloroethene	0.59	J	1.0	0.35	ug/L	1		8260B	Total/NA
Trichloroethene	3.2		0.50	0.16	ug/L	1		8260B	Total/NA
Vinyl chloride	0.39	J	1.0	0.20	ug/L	1		8260B	Total/NA

Client Sample ID: MW-17

Lab Sample ID: 500-198099-13

No Detections.

Client Sample ID: MW-14

Lab Sample ID: 500-198099-14

Analyte	Result	Qualifier	RL	MDL	Unit	Dil Fac	D	Method	Prep Type
Tetrachloroethene	2.0		1.0	0.37	ug/L	1		8260B	Total/NA

Client Sample ID: MW-18

Lab Sample ID: 500-198099-15

No Detections.

Client Sample ID: MW-15

Lab Sample ID: 500-198099-16

Analyte	Result	Qualifier	RL	MDL	Unit	Dil Fac	D	Method	Prep Type
cis-1,2-Dichloroethene	3.9		1.0	0.41	ug/L	1		8260B	Total/NA
Tetrachloroethene	84		1.0	0.37	ug/L	1		8260B	Total/NA
Trichloroethene	3.3		0.50	0.16	ug/L	1		8260B	Total/NA

Client Sample ID: MW-19

Lab Sample ID: 500-198099-17

Analyte	Result	Qualifier	RL	MDL	Unit	Dil Fac	D	Method	Prep Type
cis-1,2-Dichloroethene	9.5		1.0	0.41	ug/L	1		8260B	Total/NA
Tetrachloroethene	67		1.0	0.37	ug/L	1		8260B	Total/NA
Trichloroethene	3.0		0.50	0.16	ug/L	1		8260B	Total/NA

Client Sample ID: MW-22

Lab Sample ID: 500-198099-18

Analyte	Result	Qualifier	RL	MDL	Unit	Dil Fac	D	Method	Prep Type
cis-1,2-Dichloroethene	3.0		1.0	0.41	ug/L	1		8260B	Total/NA
Tetrachloroethene	15		1.0	0.37	ug/L	1		8260B	Total/NA
Trichloroethene	1.3		0.50	0.16	ug/L	1		8260B	Total/NA

Client Sample ID: MW-21

Lab Sample ID: 500-198099-19

No Detections.

This Detection Summary does not include radiochemical test results.

Eurofins TestAmerica, Chicago

Detection Summary

Client: KPRG and Associates, Inc.
Project/Site: Former Bask Dry Cleaners - 10009

Job ID: 500-198099-1

Client Sample ID: PZ-1

Lab Sample ID: 500-198099-20

No Detections.

Client Sample ID: MW-23

Lab Sample ID: 500-198099-21

No Detections.

Client Sample ID: MW-20

Lab Sample ID: 500-198099-22

Analyte	Result	Qualifier	RL	MDL	Unit	Dil Fac	D	Method	Prep Type
cis-1,2-Dichloroethene	5.8		1.0	0.41	ug/L	1		8260B	Total/NA
Tetrachloroethene	33		1.0	0.37	ug/L	1		8260B	Total/NA
Trichloroethene	1.7		0.50	0.16	ug/L	1		8260B	Total/NA

Client Sample ID: MW-24

Lab Sample ID: 500-198099-23

No Detections.

Client Sample ID: DUP-1

Lab Sample ID: 500-198099-24

Analyte	Result	Qualifier	RL	MDL	Unit	Dil Fac	D	Method	Prep Type
cis-1,2-Dichloroethene	0.83	J	1.0	0.41	ug/L	1		8260B	Total/NA
Tetrachloroethene	6.2		1.0	0.37	ug/L	1		8260B	Total/NA
Trichloroethene	0.35	J	0.50	0.16	ug/L	1		8260B	Total/NA

Client Sample ID: DUP-2

Lab Sample ID: 500-198099-25

Analyte	Result	Qualifier	RL	MDL	Unit	Dil Fac	D	Method	Prep Type
cis-1,2-Dichloroethene	4.3		1.0	0.41	ug/L	1		8260B	Total/NA
Tetrachloroethene	88		1.0	0.37	ug/L	1		8260B	Total/NA
Trichloroethene	3.5		0.50	0.16	ug/L	1		8260B	Total/NA

Client Sample ID: Trip Blank

Lab Sample ID: 500-198099-26

No Detections.

This Detection Summary does not include radiochemical test results.

Eurofins TestAmerica, Chicago

Method Summary

Client: KPRG and Associates, Inc.
Project/Site: Former Bask Dry Cleaners - 10009

Job ID: 500-198099-1

Method	Method Description	Protocol	Laboratory
8260B	Volatile Organic Compounds (GC/MS)	SW846	TAL CHI
5030B	Purge and Trap	SW846	TAL CHI

Protocol References:

SW846 = "Test Methods For Evaluating Solid Waste, Physical/Chemical Methods", Third Edition, November 1986 And Its Updates.

Laboratory References:

TAL CHI = Eurofins TestAmerica, Chicago, 2417 Bond Street, University Park, IL 60484, TEL (708)534-5200



Sample Summary

Client: KPRG and Associates, Inc.
Project/Site: Former Bask Dry Cleaners - 10009

Job ID: 500-198099-1

Lab Sample ID	Client Sample ID	Matrix	Collected	Received	Asset ID
500-198099-1	MW-3	Water	04/19/21 13:25	04/23/21 09:30	
500-198099-2	MW-4	Water	04/19/21 14:15	04/23/21 09:30	
500-198099-3	MW-5	Water	04/19/21 14:50	04/23/21 09:30	
500-198099-4	MW-7	Water	04/19/21 15:30	04/23/21 09:30	
500-198099-5	MW-12	Water	04/19/21 16:02	04/23/21 09:30	
500-198099-6	MW-11	Water	04/20/21 11:00	04/23/21 09:30	
500-198099-7	MW-9	Water	04/20/21 11:51	04/23/21 09:30	
500-198099-8	MW-16	Water	04/20/21 12:13	04/23/21 09:30	
500-198099-9	MW-6	Water	04/20/21 12:41	04/23/21 09:30	
500-198099-10	MW-13	Water	04/20/21 13:00	04/23/21 09:30	
500-198099-11	MW-8	Water	04/20/21 13:51	04/23/21 09:30	
500-198099-12	MW-10	Water	04/20/21 14:45	04/23/21 09:30	
500-198099-13	MW-17	Water	04/20/21 15:31	04/23/21 09:30	
500-198099-14	MW-14	Water	04/20/21 16:10	04/23/21 09:30	
500-198099-15	MW-18	Water	04/21/21 09:20	04/23/21 09:30	
500-198099-16	MW-15	Water	04/21/21 09:58	04/23/21 09:30	
500-198099-17	MW-19	Water	04/21/21 10:36	04/23/21 09:30	
500-198099-18	MW-22	Water	04/21/21 12:18	04/23/21 09:30	
500-198099-19	MW-21	Water	04/21/21 13:10	04/23/21 09:30	
500-198099-20	PZ-1	Water	04/21/21 15:45	04/23/21 09:30	
500-198099-21	MW-23	Water	04/22/21 09:45	04/23/21 09:30	
500-198099-22	MW-20	Water	04/22/21 10:20	04/23/21 09:30	
500-198099-23	MW-24	Water	04/22/21 10:56	04/23/21 09:30	
500-198099-24	DUP-1	Water	04/19/21 00:00	04/23/21 09:30	
500-198099-25	DUP-2	Water	04/21/21 00:00	04/23/21 09:30	
500-198099-26	Trip Blank	Water	04/19/21 00:00	04/23/21 09:30	

Client Sample Results

Client: KPRG and Associates, Inc.
 Project/Site: Former Bask Dry Cleaners - 10009

Job ID: 500-198099-1

Client Sample ID: MW-3

Lab Sample ID: 500-198099-1

Date Collected: 04/19/21 13:25

Matrix: Water

Date Received: 04/23/21 09:30

Method: 8260B - Volatile Organic Compounds (GC/MS)

Analyte	Result	Qualifier	RL	MDL	Unit	D	Prepared	Analyzed	Dil Fac
Carbon tetrachloride	<0.38		1.0	0.38	ug/L			04/30/21 18:18	1
Chloroethane	<0.51		1.0	0.51	ug/L			04/30/21 18:18	1
Chloroform	<0.37		2.0	0.37	ug/L			04/30/21 18:18	1
Chloromethane	<0.32		1.0	0.32	ug/L			04/30/21 18:18	1
cis-1,2-Dichloroethene	<0.41		1.0	0.41	ug/L			04/30/21 18:18	1
1,1-Dichloroethane	<0.41		1.0	0.41	ug/L			04/30/21 18:18	1
1,2-Dichloroethane	<0.39		1.0	0.39	ug/L			04/30/21 18:18	1
1,1-Dichloroethene	<0.39		1.0	0.39	ug/L			04/30/21 18:18	1
Methylene Chloride	<1.6		5.0	1.6	ug/L			04/30/21 18:18	1
Tetrachloroethene	<0.37		1.0	0.37	ug/L			04/30/21 18:18	1
trans-1,2-Dichloroethene	<0.35		1.0	0.35	ug/L			04/30/21 18:18	1
1,1,1-Trichloroethane	<0.38		1.0	0.38	ug/L			04/30/21 18:18	1
1,1,2-Trichloroethane	<0.35		1.0	0.35	ug/L			04/30/21 18:18	1
Trichloroethene	<0.16		0.50	0.16	ug/L			04/30/21 18:18	1
Vinyl chloride	<0.20		1.0	0.20	ug/L			04/30/21 18:18	1
Surrogate	%Recovery	Qualifier	Limits				Prepared	Analyzed	Dil Fac
4-Bromofluorobenzene (Surr)	91		72 - 124					04/30/21 18:18	1
Dibromofluoromethane	108		75 - 120					04/30/21 18:18	1
1,2-Dichloroethane-d4 (Surr)	98		75 - 126					04/30/21 18:18	1
Toluene-d8 (Surr)	97		75 - 120					04/30/21 18:18	1

Client Sample Results

Client: KPRG and Associates, Inc.
 Project/Site: Former Bask Dry Cleaners - 10009

Job ID: 500-198099-1

Client Sample ID: MW-4

Lab Sample ID: 500-198099-2

Date Collected: 04/19/21 14:15

Matrix: Water

Date Received: 04/23/21 09:30

Method: 8260B - Volatile Organic Compounds (GC/MS)

Analyte	Result	Qualifier	RL	MDL	Unit	D	Prepared	Analyzed	Dil Fac
Carbon tetrachloride	<0.38		1.0	0.38	ug/L			04/30/21 18:47	1
Chloroethane	<0.51		1.0	0.51	ug/L			04/30/21 18:47	1
Chloroform	<0.37		2.0	0.37	ug/L			04/30/21 18:47	1
Chloromethane	<0.32		1.0	0.32	ug/L			04/30/21 18:47	1
cis-1,2-Dichloroethene	<0.41		1.0	0.41	ug/L			04/30/21 18:47	1
1,1-Dichloroethane	<0.41		1.0	0.41	ug/L			04/30/21 18:47	1
1,2-Dichloroethane	<0.39		1.0	0.39	ug/L			04/30/21 18:47	1
1,1-Dichloroethene	<0.39		1.0	0.39	ug/L			04/30/21 18:47	1
Methylene Chloride	<1.6		5.0	1.6	ug/L			04/30/21 18:47	1
Tetrachloroethene	<0.37		1.0	0.37	ug/L			04/30/21 18:47	1
trans-1,2-Dichloroethene	<0.35		1.0	0.35	ug/L			04/30/21 18:47	1
1,1,1-Trichloroethane	<0.38		1.0	0.38	ug/L			04/30/21 18:47	1
1,1,2-Trichloroethane	<0.35		1.0	0.35	ug/L			04/30/21 18:47	1
Trichloroethene	<0.16		0.50	0.16	ug/L			04/30/21 18:47	1
Vinyl chloride	<0.20		1.0	0.20	ug/L			04/30/21 18:47	1

Surrogate	%Recovery	Qualifier	Limits	Prepared	Analyzed	Dil Fac
4-Bromofluorobenzene (Surr)	90		72 - 124		04/30/21 18:47	1
Dibromofluoromethane	109		75 - 120		04/30/21 18:47	1
1,2-Dichloroethane-d4 (Surr)	99		75 - 126		04/30/21 18:47	1
Toluene-d8 (Surr)	98		75 - 120		04/30/21 18:47	1

Client Sample Results

Client: KPRG and Associates, Inc.
 Project/Site: Former Bask Dry Cleaners - 10009

Job ID: 500-198099-1

Client Sample ID: MW-5

Lab Sample ID: 500-198099-3

Date Collected: 04/19/21 14:50

Matrix: Water

Date Received: 04/23/21 09:30

Method: 8260B - Volatile Organic Compounds (GC/MS)

Analyte	Result	Qualifier	RL	MDL	Unit	D	Prepared	Analyzed	Dil Fac
Carbon tetrachloride	<0.38		1.0	0.38	ug/L			04/30/21 19:15	1
Chloroethane	<0.51		1.0	0.51	ug/L			04/30/21 19:15	1
Chloroform	<0.37		2.0	0.37	ug/L			04/30/21 19:15	1
Chloromethane	<0.32		1.0	0.32	ug/L			04/30/21 19:15	1
cis-1,2-Dichloroethene	1.9		1.0	0.41	ug/L			04/30/21 19:15	1
1,1-Dichloroethane	<0.41		1.0	0.41	ug/L			04/30/21 19:15	1
1,2-Dichloroethane	<0.39		1.0	0.39	ug/L			04/30/21 19:15	1
1,1-Dichloroethene	<0.39		1.0	0.39	ug/L			04/30/21 19:15	1
Methylene Chloride	<1.6		5.0	1.6	ug/L			04/30/21 19:15	1
Tetrachloroethene	0.99	J	1.0	0.37	ug/L			04/30/21 19:15	1
trans-1,2-Dichloroethene	3.8		1.0	0.35	ug/L			04/30/21 19:15	1
1,1,1-Trichloroethane	<0.38		1.0	0.38	ug/L			04/30/21 19:15	1
1,1,2-Trichloroethane	<0.35		1.0	0.35	ug/L			04/30/21 19:15	1
Trichloroethene	1.2		0.50	0.16	ug/L			04/30/21 19:15	1
Vinyl chloride	<0.20		1.0	0.20	ug/L			04/30/21 19:15	1
Surrogate	%Recovery	Qualifier	Limits				Prepared	Analyzed	Dil Fac
4-Bromofluorobenzene (Surr)	89		72 - 124					04/30/21 19:15	1
Dibromofluoromethane	111		75 - 120					04/30/21 19:15	1
1,2-Dichloroethane-d4 (Surr)	101		75 - 126					04/30/21 19:15	1
Toluene-d8 (Surr)	97		75 - 120					04/30/21 19:15	1

Client Sample Results

Client: KPRG and Associates, Inc.
 Project/Site: Former Bask Dry Cleaners - 10009

Job ID: 500-198099-1

Client Sample ID: MW-7
Date Collected: 04/19/21 15:30
Date Received: 04/23/21 09:30

Lab Sample ID: 500-198099-4
Matrix: Water

Method: 8260B - Volatile Organic Compounds (GC/MS)

Analyte	Result	Qualifier	RL	MDL	Unit	D	Prepared	Analyzed	Dil Fac
Carbon tetrachloride	<0.38		1.0	0.38	ug/L			04/30/21 19:44	1
Chloroethane	<0.51		1.0	0.51	ug/L			04/30/21 19:44	1
Chloroform	<0.37		2.0	0.37	ug/L			04/30/21 19:44	1
Chloromethane	<0.32		1.0	0.32	ug/L			04/30/21 19:44	1
cis-1,2-Dichloroethene	<0.41		1.0	0.41	ug/L			04/30/21 19:44	1
1,1-Dichloroethane	<0.41		1.0	0.41	ug/L			04/30/21 19:44	1
1,2-Dichloroethane	<0.39		1.0	0.39	ug/L			04/30/21 19:44	1
1,1-Dichloroethene	<0.39		1.0	0.39	ug/L			04/30/21 19:44	1
Methylene Chloride	<1.6		5.0	1.6	ug/L			04/30/21 19:44	1
Tetrachloroethene	6.0		1.0	0.37	ug/L			04/30/21 19:44	1
trans-1,2-Dichloroethene	<0.35		1.0	0.35	ug/L			04/30/21 19:44	1
1,1,1-Trichloroethane	<0.38		1.0	0.38	ug/L			04/30/21 19:44	1
1,1,2-Trichloroethane	<0.35		1.0	0.35	ug/L			04/30/21 19:44	1
Trichloroethene	3.2		0.50	0.16	ug/L			04/30/21 19:44	1
Vinyl chloride	<0.20		1.0	0.20	ug/L			04/30/21 19:44	1
Surrogate	%Recovery	Qualifier	Limits				Prepared	Analyzed	Dil Fac
4-Bromofluorobenzene (Surr)	89		72 - 124					04/30/21 19:44	1
Dibromofluoromethane	109		75 - 120					04/30/21 19:44	1
1,2-Dichloroethane-d4 (Surr)	99		75 - 126					04/30/21 19:44	1
Toluene-d8 (Surr)	97		75 - 120					04/30/21 19:44	1

Client Sample Results

Client: KPRG and Associates, Inc.
 Project/Site: Former Bask Dry Cleaners - 10009

Job ID: 500-198099-1

Client Sample ID: MW-12

Lab Sample ID: 500-198099-5

Date Collected: 04/19/21 16:02

Matrix: Water

Date Received: 04/23/21 09:30

Method: 8260B - Volatile Organic Compounds (GC/MS)

Analyte	Result	Qualifier	RL	MDL	Unit	D	Prepared	Analyzed	Dil Fac
Carbon tetrachloride	<0.38		1.0	0.38	ug/L			04/30/21 20:12	1
Chloroethane	<0.51		1.0	0.51	ug/L			04/30/21 20:12	1
Chloroform	<0.37		2.0	0.37	ug/L			04/30/21 20:12	1
Chloromethane	<0.32		1.0	0.32	ug/L			04/30/21 20:12	1
cis-1,2-Dichloroethene	0.93	J	1.0	0.41	ug/L			04/30/21 20:12	1
1,1-Dichloroethane	<0.41		1.0	0.41	ug/L			04/30/21 20:12	1
1,2-Dichloroethane	<0.39		1.0	0.39	ug/L			04/30/21 20:12	1
1,1-Dichloroethene	<0.39		1.0	0.39	ug/L			04/30/21 20:12	1
Methylene Chloride	<1.6		5.0	1.6	ug/L			04/30/21 20:12	1
Tetrachloroethene	6.0		1.0	0.37	ug/L			04/30/21 20:12	1
trans-1,2-Dichloroethene	<0.35		1.0	0.35	ug/L			04/30/21 20:12	1
1,1,1-Trichloroethane	<0.38		1.0	0.38	ug/L			04/30/21 20:12	1
1,1,2-Trichloroethane	<0.35		1.0	0.35	ug/L			04/30/21 20:12	1
Trichloroethene	0.31	J	0.50	0.16	ug/L			04/30/21 20:12	1
Vinyl chloride	<0.20		1.0	0.20	ug/L			04/30/21 20:12	1
Surrogate	%Recovery	Qualifier	Limits				Prepared	Analyzed	Dil Fac
4-Bromofluorobenzene (Surr)	90		72 - 124					04/30/21 20:12	1
Dibromofluoromethane	108		75 - 120					04/30/21 20:12	1
1,2-Dichloroethane-d4 (Surr)	99		75 - 126					04/30/21 20:12	1
Toluene-d8 (Surr)	98		75 - 120					04/30/21 20:12	1

Client Sample Results

Client: KPRG and Associates, Inc.
 Project/Site: Former Bask Dry Cleaners - 10009

Job ID: 500-198099-1

Client Sample ID: MW-11

Lab Sample ID: 500-198099-6

Date Collected: 04/20/21 11:00

Matrix: Water

Date Received: 04/23/21 09:30

Method: 8260B - Volatile Organic Compounds (GC/MS)

Analyte	Result	Qualifier	RL	MDL	Unit	D	Prepared	Analyzed	Dil Fac
Carbon tetrachloride	<0.38		1.0	0.38	ug/L			05/04/21 11:37	1
Chloroethane	<0.51		1.0	0.51	ug/L			05/04/21 11:37	1
Chloroform	<0.37		2.0	0.37	ug/L			05/04/21 11:37	1
Chloromethane	<0.32		1.0	0.32	ug/L			05/04/21 11:37	1
cis-1,2-Dichloroethene	<0.41		1.0	0.41	ug/L			05/04/21 11:37	1
1,1-Dichloroethane	<0.41		1.0	0.41	ug/L			05/04/21 11:37	1
1,2-Dichloroethane	<0.39		1.0	0.39	ug/L			05/04/21 11:37	1
1,1-Dichloroethene	<0.39		1.0	0.39	ug/L			05/04/21 11:37	1
Methylene Chloride	<1.6		5.0	1.6	ug/L			05/04/21 11:37	1
Tetrachloroethene	2.0		1.0	0.37	ug/L			05/04/21 11:37	1
trans-1,2-Dichloroethene	<0.35		1.0	0.35	ug/L			05/04/21 11:37	1
1,1,1-Trichloroethane	<0.38		1.0	0.38	ug/L			05/04/21 11:37	1
1,1,2-Trichloroethane	<0.35		1.0	0.35	ug/L			05/04/21 11:37	1
Trichloroethene	<0.16		0.50	0.16	ug/L			05/04/21 11:37	1
Vinyl chloride	<0.20		1.0	0.20	ug/L			05/04/21 11:37	1
Surrogate	%Recovery	Qualifier	Limits				Prepared	Analyzed	Dil Fac
4-Bromofluorobenzene (Surr)	88		72 - 124					05/04/21 11:37	1
Dibromofluoromethane	108		75 - 120					05/04/21 11:37	1
1,2-Dichloroethane-d4 (Surr)	95		75 - 126					05/04/21 11:37	1
Toluene-d8 (Surr)	97		75 - 120					05/04/21 11:37	1

Client Sample Results

Client: KPRG and Associates, Inc.
 Project/Site: Former Bask Dry Cleaners - 10009

Job ID: 500-198099-1

Client Sample ID: MW-9

Lab Sample ID: 500-198099-7

Date Collected: 04/20/21 11:51

Matrix: Water

Date Received: 04/23/21 09:30

Method: 8260B - Volatile Organic Compounds (GC/MS)

Analyte	Result	Qualifier	RL	MDL	Unit	D	Prepared	Analyzed	Dil Fac
Carbon tetrachloride	<0.38		1.0	0.38	ug/L			05/04/21 12:05	1
Chloroethane	<0.51		1.0	0.51	ug/L			05/04/21 12:05	1
Chloroform	<0.37		2.0	0.37	ug/L			05/04/21 12:05	1
Chloromethane	<0.32		1.0	0.32	ug/L			05/04/21 12:05	1
cis-1,2-Dichloroethene	<0.41		1.0	0.41	ug/L			05/04/21 12:05	1
1,1-Dichloroethane	<0.41		1.0	0.41	ug/L			05/04/21 12:05	1
1,2-Dichloroethane	<0.39		1.0	0.39	ug/L			05/04/21 12:05	1
1,1-Dichloroethene	<0.39		1.0	0.39	ug/L			05/04/21 12:05	1
Methylene Chloride	<1.6		5.0	1.6	ug/L			05/04/21 12:05	1
Tetrachloroethene	<0.37		1.0	0.37	ug/L			05/04/21 12:05	1
trans-1,2-Dichloroethene	<0.35		1.0	0.35	ug/L			05/04/21 12:05	1
1,1,1-Trichloroethane	<0.38		1.0	0.38	ug/L			05/04/21 12:05	1
1,1,2-Trichloroethane	<0.35		1.0	0.35	ug/L			05/04/21 12:05	1
Trichloroethene	<0.16		0.50	0.16	ug/L			05/04/21 12:05	1
Vinyl chloride	<0.20		1.0	0.20	ug/L			05/04/21 12:05	1
Surrogate	%Recovery	Qualifier	Limits				Prepared	Analyzed	Dil Fac
4-Bromofluorobenzene (Surr)	88		72 - 124					05/04/21 12:05	1
Dibromofluoromethane	108		75 - 120					05/04/21 12:05	1
1,2-Dichloroethane-d4 (Surr)	97		75 - 126					05/04/21 12:05	1
Toluene-d8 (Surr)	97		75 - 120					05/04/21 12:05	1

Client Sample Results

Client: KPRG and Associates, Inc.
 Project/Site: Former Bask Dry Cleaners - 10009

Job ID: 500-198099-1

Client Sample ID: MW-16
Date Collected: 04/20/21 12:13
Date Received: 04/23/21 09:30

Lab Sample ID: 500-198099-8
Matrix: Water

Method: 8260B - Volatile Organic Compounds (GC/MS)

Analyte	Result	Qualifier	RL	MDL	Unit	D	Prepared	Analyzed	Dil Fac
Carbon tetrachloride	<0.38		1.0	0.38	ug/L			05/04/21 12:34	1
Chloroethane	<0.51		1.0	0.51	ug/L			05/04/21 12:34	1
Chloroform	<0.37		2.0	0.37	ug/L			05/04/21 12:34	1
Chloromethane	<0.32		1.0	0.32	ug/L			05/04/21 12:34	1
cis-1,2-Dichloroethene	<0.41		1.0	0.41	ug/L			05/04/21 12:34	1
1,1-Dichloroethane	<0.41		1.0	0.41	ug/L			05/04/21 12:34	1
1,2-Dichloroethane	<0.39		1.0	0.39	ug/L			05/04/21 12:34	1
1,1-Dichloroethene	<0.39		1.0	0.39	ug/L			05/04/21 12:34	1
Methylene Chloride	<1.6		5.0	1.6	ug/L			05/04/21 12:34	1
Tetrachloroethene	37		1.0	0.37	ug/L			05/04/21 12:34	1
trans-1,2-Dichloroethene	<0.35		1.0	0.35	ug/L			05/04/21 12:34	1
1,1,1-Trichloroethane	<0.38		1.0	0.38	ug/L			05/04/21 12:34	1
1,1,2-Trichloroethane	<0.35		1.0	0.35	ug/L			05/04/21 12:34	1
Trichloroethene	0.58		0.50	0.16	ug/L			05/04/21 12:34	1
Vinyl chloride	<0.20		1.0	0.20	ug/L			05/04/21 12:34	1

Surrogate	%Recovery	Qualifier	Limits	Prepared	Analyzed	Dil Fac
4-Bromofluorobenzene (Surr)	90		72 - 124		05/04/21 12:34	1
Dibromofluoromethane	109		75 - 120		05/04/21 12:34	1
1,2-Dichloroethane-d4 (Surr)	99		75 - 126		05/04/21 12:34	1
Toluene-d8 (Surr)	96		75 - 120		05/04/21 12:34	1

Client Sample Results

Client: KPRG and Associates, Inc.
 Project/Site: Former Bask Dry Cleaners - 10009

Job ID: 500-198099-1

Client Sample ID: MW-6

Lab Sample ID: 500-198099-9

Date Collected: 04/20/21 12:41

Matrix: Water

Date Received: 04/23/21 09:30

Method: 8260B - Volatile Organic Compounds (GC/MS)

Analyte	Result	Qualifier	RL	MDL	Unit	D	Prepared	Analyzed	Dil Fac
Carbon tetrachloride	<0.38		1.0	0.38	ug/L			05/04/21 13:02	1
Chloroethane	<0.51		1.0	0.51	ug/L			05/04/21 13:02	1
Chloroform	<0.37		2.0	0.37	ug/L			05/04/21 13:02	1
Chloromethane	<0.32		1.0	0.32	ug/L			05/04/21 13:02	1
1,1-Dichloroethane	<0.41		1.0	0.41	ug/L			05/04/21 13:02	1
1,2-Dichloroethane	<0.39		1.0	0.39	ug/L			05/04/21 13:02	1
1,1-Dichloroethene	0.41	J	1.0	0.39	ug/L			05/04/21 13:02	1
Methylene Chloride	<1.6		5.0	1.6	ug/L			05/04/21 13:02	1
trans-1,2-Dichloroethene	9.0		1.0	0.35	ug/L			05/04/21 13:02	1
1,1,1-Trichloroethane	<0.38		1.0	0.38	ug/L			05/04/21 13:02	1
1,1,2-Trichloroethane	<0.35		1.0	0.35	ug/L			05/04/21 13:02	1
Trichloroethene	69		0.50	0.16	ug/L			05/04/21 13:02	1
Vinyl chloride	9.8		1.0	0.20	ug/L			05/04/21 13:02	1

Surrogate	%Recovery	Qualifier	Limits	Prepared	Analyzed	Dil Fac
4-Bromofluorobenzene (Surr)	89		72 - 124		05/04/21 13:02	1
Dibromofluoromethane	104		75 - 120		05/04/21 13:02	1
1,2-Dichloroethane-d4 (Surr)	96		75 - 126		05/04/21 13:02	1
Toluene-d8 (Surr)	97		75 - 120		05/04/21 13:02	1

Method: 8260B - Volatile Organic Compounds (GC/MS) - DL

Analyte	Result	Qualifier	RL	MDL	Unit	D	Prepared	Analyzed	Dil Fac
cis-1,2-Dichloroethene	550		10	4.1	ug/L			05/04/21 13:30	10
Tetrachloroethene	580		10	3.7	ug/L			05/04/21 13:30	10

Surrogate	%Recovery	Qualifier	Limits	Prepared	Analyzed	Dil Fac
4-Bromofluorobenzene (Surr)	88		72 - 124		05/04/21 13:30	10
Dibromofluoromethane	108		75 - 120		05/04/21 13:30	10
1,2-Dichloroethane-d4 (Surr)	97		75 - 126		05/04/21 13:30	10
Toluene-d8 (Surr)	96		75 - 120		05/04/21 13:30	10

Client Sample Results

Client: KPRG and Associates, Inc.
 Project/Site: Former Bask Dry Cleaners - 10009

Job ID: 500-198099-1

Client Sample ID: MW-13
Date Collected: 04/20/21 13:00
Date Received: 04/23/21 09:30

Lab Sample ID: 500-198099-10
Matrix: Water

Method: 8260B - Volatile Organic Compounds (GC/MS)

Analyte	Result	Qualifier	RL	MDL	Unit	D	Prepared	Analyzed	Dil Fac
Carbon tetrachloride	<0.38		1.0	0.38	ug/L			05/04/21 13:58	1
Chloroethane	<0.51		1.0	0.51	ug/L			05/04/21 13:58	1
Chloroform	<0.37		2.0	0.37	ug/L			05/04/21 13:58	1
Chloromethane	<0.32		1.0	0.32	ug/L			05/04/21 13:58	1
cis-1,2-Dichloroethene	51		1.0	0.41	ug/L			05/04/21 13:58	1
1,1-Dichloroethane	<0.41		1.0	0.41	ug/L			05/04/21 13:58	1
1,2-Dichloroethane	<0.39		1.0	0.39	ug/L			05/04/21 13:58	1
1,1-Dichloroethene	<0.39		1.0	0.39	ug/L			05/04/21 13:58	1
Methylene Chloride	<1.6		5.0	1.6	ug/L			05/04/21 13:58	1
Tetrachloroethene	34		1.0	0.37	ug/L			05/04/21 13:58	1
trans-1,2-Dichloroethene	1.6		1.0	0.35	ug/L			05/04/21 13:58	1
1,1,1-Trichloroethane	<0.38		1.0	0.38	ug/L			05/04/21 13:58	1
1,1,2-Trichloroethane	<0.35		1.0	0.35	ug/L			05/04/21 13:58	1
Trichloroethene	4.8		0.50	0.16	ug/L			05/04/21 13:58	1
Vinyl chloride	0.92 J		1.0	0.20	ug/L			05/04/21 13:58	1

Surrogate	%Recovery	Qualifier	Limits	Prepared	Analyzed	Dil Fac
4-Bromofluorobenzene (Surr)	89		72 - 124		05/04/21 13:58	1
Dibromofluoromethane	110		75 - 120		05/04/21 13:58	1
1,2-Dichloroethane-d4 (Surr)	99		75 - 126		05/04/21 13:58	1
Toluene-d8 (Surr)	96		75 - 120		05/04/21 13:58	1

Client Sample Results

Client: KPRG and Associates, Inc.
 Project/Site: Former Bask Dry Cleaners - 10009

Job ID: 500-198099-1

Client Sample ID: MW-8

Lab Sample ID: 500-198099-11

Date Collected: 04/20/21 13:51

Matrix: Water

Date Received: 04/23/21 09:30

Method: 8260B - Volatile Organic Compounds (GC/MS)

Analyte	Result	Qualifier	RL	MDL	Unit	D	Prepared	Analyzed	Dil Fac
Carbon tetrachloride	<0.38		1.0	0.38	ug/L			05/04/21 14:27	1
Chloroethane	<0.51		1.0	0.51	ug/L			05/04/21 14:27	1
Chloroform	<0.37		2.0	0.37	ug/L			05/04/21 14:27	1
Chloromethane	<0.32		1.0	0.32	ug/L			05/04/21 14:27	1
cis-1,2-Dichloroethene	<0.41		1.0	0.41	ug/L			05/04/21 14:27	1
1,1-Dichloroethane	<0.41		1.0	0.41	ug/L			05/04/21 14:27	1
1,2-Dichloroethane	<0.39		1.0	0.39	ug/L			05/04/21 14:27	1
1,1-Dichloroethene	<0.39		1.0	0.39	ug/L			05/04/21 14:27	1
Methylene Chloride	<1.6		5.0	1.6	ug/L			05/04/21 14:27	1
Tetrachloroethene	2.7		1.0	0.37	ug/L			05/04/21 14:27	1
trans-1,2-Dichloroethene	<0.35		1.0	0.35	ug/L			05/04/21 14:27	1
1,1,1-Trichloroethane	<0.38		1.0	0.38	ug/L			05/04/21 14:27	1
1,1,2-Trichloroethane	<0.35		1.0	0.35	ug/L			05/04/21 14:27	1
Trichloroethene	<0.16		0.50	0.16	ug/L			05/04/21 14:27	1
Vinyl chloride	<0.20		1.0	0.20	ug/L			05/04/21 14:27	1
Surrogate	%Recovery	Qualifier	Limits				Prepared	Analyzed	Dil Fac
4-Bromofluorobenzene (Surr)	90		72 - 124					05/04/21 14:27	1
Dibromofluoromethane	110		75 - 120					05/04/21 14:27	1
1,2-Dichloroethane-d4 (Surr)	100		75 - 126					05/04/21 14:27	1
Toluene-d8 (Surr)	96		75 - 120					05/04/21 14:27	1

Client Sample Results

Client: KPRG and Associates, Inc.
 Project/Site: Former Bask Dry Cleaners - 10009

Job ID: 500-198099-1

Client Sample ID: MW-10

Lab Sample ID: 500-198099-12

Date Collected: 04/20/21 14:45

Matrix: Water

Date Received: 04/23/21 09:30

Method: 8260B - Volatile Organic Compounds (GC/MS)

Analyte	Result	Qualifier	RL	MDL	Unit	D	Prepared	Analyzed	Dil Fac
Carbon tetrachloride	<0.38		1.0	0.38	ug/L			05/04/21 14:56	1
Chloroethane	<0.51		1.0	0.51	ug/L			05/04/21 14:56	1
Chloroform	<0.37		2.0	0.37	ug/L			05/04/21 14:56	1
Chloromethane	<0.32		1.0	0.32	ug/L			05/04/21 14:56	1
cis-1,2-Dichloroethene	88		1.0	0.41	ug/L			05/04/21 14:56	1
1,1-Dichloroethane	<0.41		1.0	0.41	ug/L			05/04/21 14:56	1
1,2-Dichloroethane	<0.39		1.0	0.39	ug/L			05/04/21 14:56	1
1,1-Dichloroethene	<0.39		1.0	0.39	ug/L			05/04/21 14:56	1
Methylene Chloride	<1.6		5.0	1.6	ug/L			05/04/21 14:56	1
Tetrachloroethene	23		1.0	0.37	ug/L			05/04/21 14:56	1
trans-1,2-Dichloroethene	0.59 J		1.0	0.35	ug/L			05/04/21 14:56	1
1,1,1-Trichloroethane	<0.38		1.0	0.38	ug/L			05/04/21 14:56	1
1,1,2-Trichloroethane	<0.35		1.0	0.35	ug/L			05/04/21 14:56	1
Trichloroethene	3.2		0.50	0.16	ug/L			05/04/21 14:56	1
Vinyl chloride	0.39 J		1.0	0.20	ug/L			05/04/21 14:56	1
Surrogate	%Recovery	Qualifier	Limits				Prepared	Analyzed	Dil Fac
4-Bromofluorobenzene (Surr)	88		72 - 124					05/04/21 14:56	1
Dibromofluoromethane	108		75 - 120					05/04/21 14:56	1
1,2-Dichloroethane-d4 (Surr)	98		75 - 126					05/04/21 14:56	1
Toluene-d8 (Surr)	96		75 - 120					05/04/21 14:56	1

Client Sample Results

Client: KPRG and Associates, Inc.
 Project/Site: Former Bask Dry Cleaners - 10009

Job ID: 500-198099-1

Client Sample ID: MW-17

Lab Sample ID: 500-198099-13

Date Collected: 04/20/21 15:31

Matrix: Water

Date Received: 04/23/21 09:30

Method: 8260B - Volatile Organic Compounds (GC/MS)

Analyte	Result	Qualifier	RL	MDL	Unit	D	Prepared	Analyzed	Dil Fac
Carbon tetrachloride	<0.38		1.0	0.38	ug/L			05/04/21 15:24	1
Chloroethane	<0.51		1.0	0.51	ug/L			05/04/21 15:24	1
Chloroform	<0.37		2.0	0.37	ug/L			05/04/21 15:24	1
Chloromethane	<0.32		1.0	0.32	ug/L			05/04/21 15:24	1
cis-1,2-Dichloroethene	<0.41		1.0	0.41	ug/L			05/04/21 15:24	1
1,1-Dichloroethane	<0.41		1.0	0.41	ug/L			05/04/21 15:24	1
1,2-Dichloroethane	<0.39		1.0	0.39	ug/L			05/04/21 15:24	1
1,1-Dichloroethene	<0.39		1.0	0.39	ug/L			05/04/21 15:24	1
Methylene Chloride	<1.6		5.0	1.6	ug/L			05/04/21 15:24	1
Tetrachloroethene	<0.37		1.0	0.37	ug/L			05/04/21 15:24	1
trans-1,2-Dichloroethene	<0.35		1.0	0.35	ug/L			05/04/21 15:24	1
1,1,1-Trichloroethane	<0.38		1.0	0.38	ug/L			05/04/21 15:24	1
1,1,2-Trichloroethane	<0.35		1.0	0.35	ug/L			05/04/21 15:24	1
Trichloroethene	<0.16		0.50	0.16	ug/L			05/04/21 15:24	1
Vinyl chloride	<0.20		1.0	0.20	ug/L			05/04/21 15:24	1

Surrogate	%Recovery	Qualifier	Limits	Prepared	Analyzed	Dil Fac
4-Bromofluorobenzene (Surr)	90		72 - 124		05/04/21 15:24	1
Dibromofluoromethane	110		75 - 120		05/04/21 15:24	1
1,2-Dichloroethane-d4 (Surr)	101		75 - 126		05/04/21 15:24	1
Toluene-d8 (Surr)	96		75 - 120		05/04/21 15:24	1

Client Sample Results

Client: KPRG and Associates, Inc.
 Project/Site: Former Bask Dry Cleaners - 10009

Job ID: 500-198099-1

Client Sample ID: MW-14

Lab Sample ID: 500-198099-14

Date Collected: 04/20/21 16:10

Matrix: Water

Date Received: 04/23/21 09:30

Method: 8260B - Volatile Organic Compounds (GC/MS)

Analyte	Result	Qualifier	RL	MDL	Unit	D	Prepared	Analyzed	Dil Fac
Carbon tetrachloride	<0.38		1.0	0.38	ug/L			05/04/21 15:53	1
Chloroethane	<0.51		1.0	0.51	ug/L			05/04/21 15:53	1
Chloroform	<0.37		2.0	0.37	ug/L			05/04/21 15:53	1
Chloromethane	<0.32		1.0	0.32	ug/L			05/04/21 15:53	1
cis-1,2-Dichloroethene	<0.41		1.0	0.41	ug/L			05/04/21 15:53	1
1,1-Dichloroethane	<0.41		1.0	0.41	ug/L			05/04/21 15:53	1
1,2-Dichloroethane	<0.39		1.0	0.39	ug/L			05/04/21 15:53	1
1,1-Dichloroethene	<0.39		1.0	0.39	ug/L			05/04/21 15:53	1
Methylene Chloride	<1.6		5.0	1.6	ug/L			05/04/21 15:53	1
Tetrachloroethene	2.0		1.0	0.37	ug/L			05/04/21 15:53	1
trans-1,2-Dichloroethene	<0.35		1.0	0.35	ug/L			05/04/21 15:53	1
1,1,1-Trichloroethane	<0.38		1.0	0.38	ug/L			05/04/21 15:53	1
1,1,2-Trichloroethane	<0.35		1.0	0.35	ug/L			05/04/21 15:53	1
Trichloroethene	<0.16		0.50	0.16	ug/L			05/04/21 15:53	1
Vinyl chloride	<0.20		1.0	0.20	ug/L			05/04/21 15:53	1
Surrogate	%Recovery	Qualifier	Limits				Prepared	Analyzed	Dil Fac
4-Bromofluorobenzene (Surr)	90		72 - 124					05/04/21 15:53	1
Dibromofluoromethane	110		75 - 120					05/04/21 15:53	1
1,2-Dichloroethane-d4 (Surr)	102		75 - 126					05/04/21 15:53	1
Toluene-d8 (Surr)	97		75 - 120					05/04/21 15:53	1

Client Sample Results

Client: KPRG and Associates, Inc.
 Project/Site: Former Bask Dry Cleaners - 10009

Job ID: 500-198099-1

Client Sample ID: MW-18

Lab Sample ID: 500-198099-15

Date Collected: 04/21/21 09:20

Matrix: Water

Date Received: 04/23/21 09:30

Method: 8260B - Volatile Organic Compounds (GC/MS)

Analyte	Result	Qualifier	RL	MDL	Unit	D	Prepared	Analyzed	Dil Fac
Carbon tetrachloride	<0.38		1.0	0.38	ug/L			05/04/21 16:21	1
Chloroethane	<0.51		1.0	0.51	ug/L			05/04/21 16:21	1
Chloroform	<0.37		2.0	0.37	ug/L			05/04/21 16:21	1
Chloromethane	<0.32		1.0	0.32	ug/L			05/04/21 16:21	1
cis-1,2-Dichloroethene	<0.41		1.0	0.41	ug/L			05/04/21 16:21	1
1,1-Dichloroethane	<0.41		1.0	0.41	ug/L			05/04/21 16:21	1
1,2-Dichloroethane	<0.39		1.0	0.39	ug/L			05/04/21 16:21	1
1,1-Dichloroethene	<0.39		1.0	0.39	ug/L			05/04/21 16:21	1
Methylene Chloride	<1.6		5.0	1.6	ug/L			05/04/21 16:21	1
Tetrachloroethene	<0.37		1.0	0.37	ug/L			05/04/21 16:21	1
trans-1,2-Dichloroethene	<0.35		1.0	0.35	ug/L			05/04/21 16:21	1
1,1,1-Trichloroethane	<0.38		1.0	0.38	ug/L			05/04/21 16:21	1
1,1,2-Trichloroethane	<0.35		1.0	0.35	ug/L			05/04/21 16:21	1
Trichloroethene	<0.16		0.50	0.16	ug/L			05/04/21 16:21	1
Vinyl chloride	<0.20		1.0	0.20	ug/L			05/04/21 16:21	1
Surrogate	%Recovery	Qualifier	Limits				Prepared	Analyzed	Dil Fac
4-Bromofluorobenzene (Surr)	90		72 - 124					05/04/21 16:21	1
Dibromofluoromethane	109		75 - 120					05/04/21 16:21	1
1,2-Dichloroethane-d4 (Surr)	98		75 - 126					05/04/21 16:21	1
Toluene-d8 (Surr)	98		75 - 120					05/04/21 16:21	1

Client Sample Results

Client: KPRG and Associates, Inc.
 Project/Site: Former Bask Dry Cleaners - 10009

Job ID: 500-198099-1

Client Sample ID: MW-15

Lab Sample ID: 500-198099-16

Date Collected: 04/21/21 09:58

Matrix: Water

Date Received: 04/23/21 09:30

Method: 8260B - Volatile Organic Compounds (GC/MS)

Analyte	Result	Qualifier	RL	MDL	Unit	D	Prepared	Analyzed	Dil Fac
Carbon tetrachloride	<0.38		1.0	0.38	ug/L			05/04/21 16:49	1
Chloroethane	<0.51		1.0	0.51	ug/L			05/04/21 16:49	1
Chloroform	<0.37		2.0	0.37	ug/L			05/04/21 16:49	1
Chloromethane	<0.32		1.0	0.32	ug/L			05/04/21 16:49	1
cis-1,2-Dichloroethene	3.9		1.0	0.41	ug/L			05/04/21 16:49	1
1,1-Dichloroethane	<0.41		1.0	0.41	ug/L			05/04/21 16:49	1
1,2-Dichloroethane	<0.39		1.0	0.39	ug/L			05/04/21 16:49	1
1,1-Dichloroethene	<0.39		1.0	0.39	ug/L			05/04/21 16:49	1
Methylene Chloride	<1.6		5.0	1.6	ug/L			05/04/21 16:49	1
Tetrachloroethene	84		1.0	0.37	ug/L			05/04/21 16:49	1
trans-1,2-Dichloroethene	<0.35		1.0	0.35	ug/L			05/04/21 16:49	1
1,1,1-Trichloroethane	<0.38		1.0	0.38	ug/L			05/04/21 16:49	1
1,1,2-Trichloroethane	<0.35		1.0	0.35	ug/L			05/04/21 16:49	1
Trichloroethene	3.3		0.50	0.16	ug/L			05/04/21 16:49	1
Vinyl chloride	<0.20		1.0	0.20	ug/L			05/04/21 16:49	1

Surrogate	%Recovery	Qualifier	Limits	Prepared	Analyzed	Dil Fac
4-Bromofluorobenzene (Surr)	89		72 - 124		05/04/21 16:49	1
Dibromofluoromethane	109		75 - 120		05/04/21 16:49	1
1,2-Dichloroethane-d4 (Surr)	99		75 - 126		05/04/21 16:49	1
Toluene-d8 (Surr)	95		75 - 120		05/04/21 16:49	1

Client Sample Results

Client: KPRG and Associates, Inc.
 Project/Site: Former Bask Dry Cleaners - 10009

Job ID: 500-198099-1

Client Sample ID: MW-19

Lab Sample ID: 500-198099-17

Date Collected: 04/21/21 10:36

Matrix: Water

Date Received: 04/23/21 09:30

Method: 8260B - Volatile Organic Compounds (GC/MS)

Analyte	Result	Qualifier	RL	MDL	Unit	D	Prepared	Analyzed	Dil Fac
Carbon tetrachloride	<0.38		1.0	0.38	ug/L			05/04/21 17:18	1
Chloroethane	<0.51		1.0	0.51	ug/L			05/04/21 17:18	1
Chloroform	<0.37		2.0	0.37	ug/L			05/04/21 17:18	1
Chloromethane	<0.32		1.0	0.32	ug/L			05/04/21 17:18	1
cis-1,2-Dichloroethene	9.5		1.0	0.41	ug/L			05/04/21 17:18	1
1,1-Dichloroethane	<0.41		1.0	0.41	ug/L			05/04/21 17:18	1
1,2-Dichloroethane	<0.39		1.0	0.39	ug/L			05/04/21 17:18	1
1,1-Dichloroethene	<0.39		1.0	0.39	ug/L			05/04/21 17:18	1
Methylene Chloride	<1.6		5.0	1.6	ug/L			05/04/21 17:18	1
Tetrachloroethene	67		1.0	0.37	ug/L			05/04/21 17:18	1
trans-1,2-Dichloroethene	<0.35		1.0	0.35	ug/L			05/04/21 17:18	1
1,1,1-Trichloroethane	<0.38		1.0	0.38	ug/L			05/04/21 17:18	1
1,1,2-Trichloroethane	<0.35		1.0	0.35	ug/L			05/04/21 17:18	1
Trichloroethene	3.0		0.50	0.16	ug/L			05/04/21 17:18	1
Vinyl chloride	<0.20		1.0	0.20	ug/L			05/04/21 17:18	1
Surrogate	%Recovery	Qualifier	Limits				Prepared	Analyzed	Dil Fac
4-Bromofluorobenzene (Surr)	90		72 - 124					05/04/21 17:18	1
Dibromofluoromethane	110		75 - 120					05/04/21 17:18	1
1,2-Dichloroethane-d4 (Surr)	99		75 - 126					05/04/21 17:18	1
Toluene-d8 (Surr)	96		75 - 120					05/04/21 17:18	1

Client Sample Results

Client: KPRG and Associates, Inc.
 Project/Site: Former Bask Dry Cleaners - 10009

Job ID: 500-198099-1

Client Sample ID: MW-22

Lab Sample ID: 500-198099-18

Date Collected: 04/21/21 12:18

Matrix: Water

Date Received: 04/23/21 09:30

Method: 8260B - Volatile Organic Compounds (GC/MS)

Analyte	Result	Qualifier	RL	MDL	Unit	D	Prepared	Analyzed	Dil Fac
Carbon tetrachloride	<0.38		1.0	0.38	ug/L			05/04/21 17:46	1
Chloroethane	<0.51		1.0	0.51	ug/L			05/04/21 17:46	1
Chloroform	<0.37		2.0	0.37	ug/L			05/04/21 17:46	1
Chloromethane	<0.32		1.0	0.32	ug/L			05/04/21 17:46	1
cis-1,2-Dichloroethene	3.0		1.0	0.41	ug/L			05/04/21 17:46	1
1,1-Dichloroethane	<0.41		1.0	0.41	ug/L			05/04/21 17:46	1
1,2-Dichloroethane	<0.39		1.0	0.39	ug/L			05/04/21 17:46	1
1,1-Dichloroethene	<0.39		1.0	0.39	ug/L			05/04/21 17:46	1
Methylene Chloride	<1.6		5.0	1.6	ug/L			05/04/21 17:46	1
Tetrachloroethene	15		1.0	0.37	ug/L			05/04/21 17:46	1
trans-1,2-Dichloroethene	<0.35		1.0	0.35	ug/L			05/04/21 17:46	1
1,1,1-Trichloroethane	<0.38		1.0	0.38	ug/L			05/04/21 17:46	1
1,1,2-Trichloroethane	<0.35		1.0	0.35	ug/L			05/04/21 17:46	1
Trichloroethene	1.3		0.50	0.16	ug/L			05/04/21 17:46	1
Vinyl chloride	<0.20		1.0	0.20	ug/L			05/04/21 17:46	1
Surrogate	%Recovery	Qualifier	Limits				Prepared	Analyzed	Dil Fac
4-Bromofluorobenzene (Surr)	90		72 - 124					05/04/21 17:46	1
Dibromofluoromethane	108		75 - 120					05/04/21 17:46	1
1,2-Dichloroethane-d4 (Surr)	100		75 - 126					05/04/21 17:46	1
Toluene-d8 (Surr)	96		75 - 120					05/04/21 17:46	1

Client Sample Results

Client: KPRG and Associates, Inc.
 Project/Site: Former Bask Dry Cleaners - 10009

Job ID: 500-198099-1

Client Sample ID: MW-21

Lab Sample ID: 500-198099-19

Date Collected: 04/21/21 13:10

Matrix: Water

Date Received: 04/23/21 09:30

Method: 8260B - Volatile Organic Compounds (GC/MS)

Analyte	Result	Qualifier	RL	MDL	Unit	D	Prepared	Analyzed	Dil Fac
Carbon tetrachloride	<0.38		1.0	0.38	ug/L			05/04/21 18:15	1
Chloroethane	<0.51		1.0	0.51	ug/L			05/04/21 18:15	1
Chloroform	<0.37		2.0	0.37	ug/L			05/04/21 18:15	1
Chloromethane	<0.32		1.0	0.32	ug/L			05/04/21 18:15	1
cis-1,2-Dichloroethene	<0.41		1.0	0.41	ug/L			05/04/21 18:15	1
1,1-Dichloroethane	<0.41		1.0	0.41	ug/L			05/04/21 18:15	1
1,2-Dichloroethane	<0.39		1.0	0.39	ug/L			05/04/21 18:15	1
1,1-Dichloroethene	<0.39		1.0	0.39	ug/L			05/04/21 18:15	1
Methylene Chloride	<1.6		5.0	1.6	ug/L			05/04/21 18:15	1
Tetrachloroethene	<0.37		1.0	0.37	ug/L			05/04/21 18:15	1
trans-1,2-Dichloroethene	<0.35		1.0	0.35	ug/L			05/04/21 18:15	1
1,1,1-Trichloroethane	<0.38		1.0	0.38	ug/L			05/04/21 18:15	1
1,1,2-Trichloroethane	<0.35		1.0	0.35	ug/L			05/04/21 18:15	1
Trichloroethene	<0.16		0.50	0.16	ug/L			05/04/21 18:15	1
Vinyl chloride	<0.20		1.0	0.20	ug/L			05/04/21 18:15	1
Surrogate	%Recovery	Qualifier	Limits				Prepared	Analyzed	Dil Fac
4-Bromofluorobenzene (Surr)	90		72 - 124					05/04/21 18:15	1
Dibromofluoromethane	111		75 - 120					05/04/21 18:15	1
1,2-Dichloroethane-d4 (Surr)	101		75 - 126					05/04/21 18:15	1
Toluene-d8 (Surr)	97		75 - 120					05/04/21 18:15	1

Client Sample Results

Client: KPRG and Associates, Inc.
 Project/Site: Former Bask Dry Cleaners - 10009

Job ID: 500-198099-1

Client Sample ID: PZ-1

Lab Sample ID: 500-198099-20

Date Collected: 04/21/21 15:45

Matrix: Water

Date Received: 04/23/21 09:30

Method: 8260B - Volatile Organic Compounds (GC/MS)

Analyte	Result	Qualifier	RL	MDL	Unit	D	Prepared	Analyzed	Dil Fac
Carbon tetrachloride	<0.38		1.0	0.38	ug/L			05/04/21 18:43	1
Chloroethane	<0.51		1.0	0.51	ug/L			05/04/21 18:43	1
Chloroform	<0.37		2.0	0.37	ug/L			05/04/21 18:43	1
Chloromethane	<0.32		1.0	0.32	ug/L			05/04/21 18:43	1
cis-1,2-Dichloroethene	<0.41		1.0	0.41	ug/L			05/04/21 18:43	1
1,1-Dichloroethane	<0.41		1.0	0.41	ug/L			05/04/21 18:43	1
1,2-Dichloroethane	<0.39		1.0	0.39	ug/L			05/04/21 18:43	1
1,1-Dichloroethene	<0.39		1.0	0.39	ug/L			05/04/21 18:43	1
Methylene Chloride	<1.6		5.0	1.6	ug/L			05/04/21 18:43	1
Tetrachloroethene	<0.37		1.0	0.37	ug/L			05/04/21 18:43	1
trans-1,2-Dichloroethene	<0.35		1.0	0.35	ug/L			05/04/21 18:43	1
1,1,1-Trichloroethane	<0.38		1.0	0.38	ug/L			05/04/21 18:43	1
1,1,2-Trichloroethane	<0.35		1.0	0.35	ug/L			05/04/21 18:43	1
Trichloroethene	<0.16		0.50	0.16	ug/L			05/04/21 18:43	1
Vinyl chloride	<0.20		1.0	0.20	ug/L			05/04/21 18:43	1
Surrogate	%Recovery	Qualifier	Limits				Prepared	Analyzed	Dil Fac
4-Bromofluorobenzene (Surr)	91		72 - 124					05/04/21 18:43	1
Dibromofluoromethane	110		75 - 120					05/04/21 18:43	1
1,2-Dichloroethane-d4 (Surr)	101		75 - 126					05/04/21 18:43	1
Toluene-d8 (Surr)	96		75 - 120					05/04/21 18:43	1

Client Sample Results

Client: KPRG and Associates, Inc.
 Project/Site: Former Bask Dry Cleaners - 10009

Job ID: 500-198099-1

Client Sample ID: MW-23
Date Collected: 04/22/21 09:45
Date Received: 04/23/21 09:30

Lab Sample ID: 500-198099-21
Matrix: Water

Method: 8260B - Volatile Organic Compounds (GC/MS)

Analyte	Result	Qualifier	RL	MDL	Unit	D	Prepared	Analyzed	Dil Fac
Carbon tetrachloride	<0.38		1.0	0.38	ug/L			05/04/21 19:12	1
Chloroethane	<0.51		1.0	0.51	ug/L			05/04/21 19:12	1
Chloroform	<0.37		2.0	0.37	ug/L			05/04/21 19:12	1
Chloromethane	<0.32		1.0	0.32	ug/L			05/04/21 19:12	1
cis-1,2-Dichloroethene	<0.41		1.0	0.41	ug/L			05/04/21 19:12	1
1,1-Dichloroethane	<0.41		1.0	0.41	ug/L			05/04/21 19:12	1
1,2-Dichloroethane	<0.39		1.0	0.39	ug/L			05/04/21 19:12	1
1,1-Dichloroethene	<0.39		1.0	0.39	ug/L			05/04/21 19:12	1
Methylene Chloride	<1.6		5.0	1.6	ug/L			05/04/21 19:12	1
Tetrachloroethene	<0.37		1.0	0.37	ug/L			05/04/21 19:12	1
trans-1,2-Dichloroethene	<0.35		1.0	0.35	ug/L			05/04/21 19:12	1
1,1,1-Trichloroethane	<0.38		1.0	0.38	ug/L			05/04/21 19:12	1
1,1,2-Trichloroethane	<0.35		1.0	0.35	ug/L			05/04/21 19:12	1
Trichloroethene	<0.16		0.50	0.16	ug/L			05/04/21 19:12	1
Vinyl chloride	<0.20		1.0	0.20	ug/L			05/04/21 19:12	1

Surrogate	%Recovery	Qualifier	Limits	Prepared	Analyzed	Dil Fac
4-Bromofluorobenzene (Surr)	90		72 - 124		05/04/21 19:12	1
Dibromofluoromethane	111		75 - 120		05/04/21 19:12	1
1,2-Dichloroethane-d4 (Surr)	100		75 - 126		05/04/21 19:12	1
Toluene-d8 (Surr)	96		75 - 120		05/04/21 19:12	1

Client Sample Results

Client: KPRG and Associates, Inc.
 Project/Site: Former Bask Dry Cleaners - 10009

Job ID: 500-198099-1

Client Sample ID: MW-20

Lab Sample ID: 500-198099-22

Date Collected: 04/22/21 10:20

Matrix: Water

Date Received: 04/23/21 09:30

Method: 8260B - Volatile Organic Compounds (GC/MS)

Analyte	Result	Qualifier	RL	MDL	Unit	D	Prepared	Analyzed	Dil Fac
Carbon tetrachloride	<0.38		1.0	0.38	ug/L			05/05/21 14:14	1
Chloroethane	<0.51		1.0	0.51	ug/L			05/05/21 14:14	1
Chloroform	<0.37		2.0	0.37	ug/L			05/05/21 14:14	1
Chloromethane	<0.32		1.0	0.32	ug/L			05/05/21 14:14	1
cis-1,2-Dichloroethene	5.8		1.0	0.41	ug/L			05/05/21 14:14	1
1,1-Dichloroethane	<0.41		1.0	0.41	ug/L			05/05/21 14:14	1
1,2-Dichloroethane	<0.39		1.0	0.39	ug/L			05/05/21 14:14	1
1,1-Dichloroethene	<0.39		1.0	0.39	ug/L			05/05/21 14:14	1
Methylene Chloride	<1.6		5.0	1.6	ug/L			05/05/21 14:14	1
Tetrachloroethene	33		1.0	0.37	ug/L			05/05/21 14:14	1
trans-1,2-Dichloroethene	<0.35		1.0	0.35	ug/L			05/05/21 14:14	1
1,1,1-Trichloroethane	<0.38		1.0	0.38	ug/L			05/05/21 14:14	1
1,1,2-Trichloroethane	<0.35		1.0	0.35	ug/L			05/05/21 14:14	1
Trichloroethene	1.7		0.50	0.16	ug/L			05/05/21 14:14	1
Vinyl chloride	<0.20		1.0	0.20	ug/L			05/05/21 14:14	1
Surrogate	%Recovery	Qualifier	Limits				Prepared	Analyzed	Dil Fac
4-Bromofluorobenzene (Surr)	89		72 - 124					05/05/21 14:14	1
Dibromofluoromethane	108		75 - 120					05/05/21 14:14	1
1,2-Dichloroethane-d4 (Surr)	97		75 - 126					05/05/21 14:14	1
Toluene-d8 (Surr)	97		75 - 120					05/05/21 14:14	1

Client Sample Results

Client: KPRG and Associates, Inc.
 Project/Site: Former Bask Dry Cleaners - 10009

Job ID: 500-198099-1

Client Sample ID: MW-24

Lab Sample ID: 500-198099-23

Date Collected: 04/22/21 10:56

Matrix: Water

Date Received: 04/23/21 09:30

Method: 8260B - Volatile Organic Compounds (GC/MS)

Analyte	Result	Qualifier	RL	MDL	Unit	D	Prepared	Analyzed	Dil Fac
Carbon tetrachloride	<0.38		1.0	0.38	ug/L			05/05/21 14:42	1
Chloroethane	<0.51		1.0	0.51	ug/L			05/05/21 14:42	1
Chloroform	<0.37		2.0	0.37	ug/L			05/05/21 14:42	1
Chloromethane	<0.32		1.0	0.32	ug/L			05/05/21 14:42	1
cis-1,2-Dichloroethene	<0.41		1.0	0.41	ug/L			05/05/21 14:42	1
1,1-Dichloroethane	<0.41		1.0	0.41	ug/L			05/05/21 14:42	1
1,2-Dichloroethane	<0.39		1.0	0.39	ug/L			05/05/21 14:42	1
1,1-Dichloroethene	<0.39		1.0	0.39	ug/L			05/05/21 14:42	1
Methylene Chloride	<1.6		5.0	1.6	ug/L			05/05/21 14:42	1
Tetrachloroethene	<0.37		1.0	0.37	ug/L			05/05/21 14:42	1
trans-1,2-Dichloroethene	<0.35		1.0	0.35	ug/L			05/05/21 14:42	1
1,1,1-Trichloroethane	<0.38		1.0	0.38	ug/L			05/05/21 14:42	1
1,1,2-Trichloroethane	<0.35		1.0	0.35	ug/L			05/05/21 14:42	1
Trichloroethene	<0.16		0.50	0.16	ug/L			05/05/21 14:42	1
Vinyl chloride	<0.20		1.0	0.20	ug/L			05/05/21 14:42	1
Surrogate	%Recovery	Qualifier	Limits				Prepared	Analyzed	Dil Fac
4-Bromofluorobenzene (Surr)	89		72 - 124					05/05/21 14:42	1
Dibromofluoromethane	109		75 - 120					05/05/21 14:42	1
1,2-Dichloroethane-d4 (Surr)	100		75 - 126					05/05/21 14:42	1
Toluene-d8 (Surr)	97		75 - 120					05/05/21 14:42	1

Client Sample Results

Client: KPRG and Associates, Inc.
 Project/Site: Former Bask Dry Cleaners - 10009

Job ID: 500-198099-1

Client Sample ID: DUP-1

Lab Sample ID: 500-198099-24

Date Collected: 04/19/21 00:00

Matrix: Water

Date Received: 04/23/21 09:30

Method: 8260B - Volatile Organic Compounds (GC/MS)

Analyte	Result	Qualifier	RL	MDL	Unit	D	Prepared	Analyzed	Dil Fac
Carbon tetrachloride	<0.38		1.0	0.38	ug/L			04/30/21 20:41	1
Chloroethane	<0.51		1.0	0.51	ug/L			04/30/21 20:41	1
Chloroform	<0.37		2.0	0.37	ug/L			04/30/21 20:41	1
Chloromethane	<0.32		1.0	0.32	ug/L			04/30/21 20:41	1
cis-1,2-Dichloroethene	0.83	J	1.0	0.41	ug/L			04/30/21 20:41	1
1,1-Dichloroethane	<0.41		1.0	0.41	ug/L			04/30/21 20:41	1
1,2-Dichloroethane	<0.39		1.0	0.39	ug/L			04/30/21 20:41	1
1,1-Dichloroethene	<0.39		1.0	0.39	ug/L			04/30/21 20:41	1
Methylene Chloride	<1.6		5.0	1.6	ug/L			04/30/21 20:41	1
Tetrachloroethene	6.2		1.0	0.37	ug/L			04/30/21 20:41	1
trans-1,2-Dichloroethene	<0.35		1.0	0.35	ug/L			04/30/21 20:41	1
1,1,1-Trichloroethane	<0.38		1.0	0.38	ug/L			04/30/21 20:41	1
1,1,2-Trichloroethane	<0.35		1.0	0.35	ug/L			04/30/21 20:41	1
Trichloroethene	0.35	J	0.50	0.16	ug/L			04/30/21 20:41	1
Vinyl chloride	<0.20		1.0	0.20	ug/L			04/30/21 20:41	1
Surrogate	%Recovery	Qualifier	Limits				Prepared	Analyzed	Dil Fac
4-Bromofluorobenzene (Surr)	91		72 - 124					04/30/21 20:41	1
Dibromofluoromethane	107		75 - 120					04/30/21 20:41	1
1,2-Dichloroethane-d4 (Surr)	99		75 - 126					04/30/21 20:41	1
Toluene-d8 (Surr)	99		75 - 120					04/30/21 20:41	1

Client Sample Results

Client: KPRG and Associates, Inc.
 Project/Site: Former Bask Dry Cleaners - 10009

Job ID: 500-198099-1

Client Sample ID: DUP-2

Lab Sample ID: 500-198099-25

Date Collected: 04/21/21 00:00

Matrix: Water

Date Received: 04/23/21 09:30

Method: 8260B - Volatile Organic Compounds (GC/MS)

Analyte	Result	Qualifier	RL	MDL	Unit	D	Prepared	Analyzed	Dil Fac
Carbon tetrachloride	<0.38		1.0	0.38	ug/L			05/04/21 19:40	1
Chloroethane	<0.51		1.0	0.51	ug/L			05/04/21 19:40	1
Chloroform	<0.37		2.0	0.37	ug/L			05/04/21 19:40	1
Chloromethane	<0.32		1.0	0.32	ug/L			05/04/21 19:40	1
cis-1,2-Dichloroethene	4.3		1.0	0.41	ug/L			05/04/21 19:40	1
1,1-Dichloroethane	<0.41		1.0	0.41	ug/L			05/04/21 19:40	1
1,2-Dichloroethane	<0.39		1.0	0.39	ug/L			05/04/21 19:40	1
1,1-Dichloroethene	<0.39		1.0	0.39	ug/L			05/04/21 19:40	1
Methylene Chloride	<1.6		5.0	1.6	ug/L			05/04/21 19:40	1
Tetrachloroethene	88		1.0	0.37	ug/L			05/04/21 19:40	1
trans-1,2-Dichloroethene	<0.35		1.0	0.35	ug/L			05/04/21 19:40	1
1,1,1-Trichloroethane	<0.38		1.0	0.38	ug/L			05/04/21 19:40	1
1,1,2-Trichloroethane	<0.35		1.0	0.35	ug/L			05/04/21 19:40	1
Trichloroethene	3.5		0.50	0.16	ug/L			05/04/21 19:40	1
Vinyl chloride	<0.20		1.0	0.20	ug/L			05/04/21 19:40	1
Surrogate	%Recovery	Qualifier	Limits				Prepared	Analyzed	Dil Fac
4-Bromofluorobenzene (Surr)	93		72 - 124					05/04/21 19:40	1
Dibromofluoromethane	110		75 - 120					05/04/21 19:40	1
1,2-Dichloroethane-d4 (Surr)	100		75 - 126					05/04/21 19:40	1
Toluene-d8 (Surr)	97		75 - 120					05/04/21 19:40	1

Client Sample Results

Client: KPRG and Associates, Inc.
 Project/Site: Former Bask Dry Cleaners - 10009

Job ID: 500-198099-1

Client Sample ID: Trip Blank

Lab Sample ID: 500-198099-26

Date Collected: 04/19/21 00:00

Matrix: Water

Date Received: 04/23/21 09:30

Method: 8260B - Volatile Organic Compounds (GC/MS)

Analyte	Result	Qualifier	RL	MDL	Unit	D	Prepared	Analyzed	Dil Fac
Carbon tetrachloride	<0.38		1.0	0.38	ug/L			04/30/21 21:09	1
Chloroethane	<0.51		1.0	0.51	ug/L			04/30/21 21:09	1
Chloroform	<0.37		2.0	0.37	ug/L			04/30/21 21:09	1
Chloromethane	<0.32		1.0	0.32	ug/L			04/30/21 21:09	1
cis-1,2-Dichloroethene	<0.41		1.0	0.41	ug/L			04/30/21 21:09	1
1,1-Dichloroethane	<0.41		1.0	0.41	ug/L			04/30/21 21:09	1
1,2-Dichloroethane	<0.39		1.0	0.39	ug/L			04/30/21 21:09	1
1,1-Dichloroethene	<0.39		1.0	0.39	ug/L			04/30/21 21:09	1
Methylene Chloride	<1.6		5.0	1.6	ug/L			04/30/21 21:09	1
Tetrachloroethene	<0.37		1.0	0.37	ug/L			04/30/21 21:09	1
trans-1,2-Dichloroethene	<0.35		1.0	0.35	ug/L			04/30/21 21:09	1
1,1,1-Trichloroethane	<0.38		1.0	0.38	ug/L			04/30/21 21:09	1
1,1,2-Trichloroethane	<0.35		1.0	0.35	ug/L			04/30/21 21:09	1
Trichloroethene	<0.16		0.50	0.16	ug/L			04/30/21 21:09	1
Vinyl chloride	<0.20		1.0	0.20	ug/L			04/30/21 21:09	1
Surrogate	%Recovery	Qualifier	Limits				Prepared	Analyzed	Dil Fac
4-Bromofluorobenzene (Surr)	93		72 - 124					04/30/21 21:09	1
Dibromofluoromethane	109		75 - 120					04/30/21 21:09	1
1,2-Dichloroethane-d4 (Surr)	100		75 - 126					04/30/21 21:09	1
Toluene-d8 (Surr)	98		75 - 120					04/30/21 21:09	1

Definitions/Glossary

Client: KPRG and Associates, Inc.
Project/Site: Former Bask Dry Cleaners - 10009

Job ID: 500-198099-1

Qualifiers

GC/MS VOA

Qualifier	Qualifier Description
J	Result is less than the RL but greater than or equal to the MDL and the concentration is an approximate value.

Glossary

Abbreviation	These commonly used abbreviations may or may not be present in this report.
α	Listed under the "D" column to designate that the result is reported on a dry weight basis
%R	Percent Recovery
CFL	Contains Free Liquid
CFU	Colony Forming Unit
CNF	Contains No Free Liquid
DER	Duplicate Error Ratio (normalized absolute difference)
Dil Fac	Dilution Factor
DL	Detection Limit (DoD/DOE)
DL, RA, RE, IN	Indicates a Dilution, Re-analysis, Re-extraction, or additional Initial metals/anion analysis of the sample
DLC	Decision Level Concentration (Radiochemistry)
EDL	Estimated Detection Limit (Dioxin)
LOD	Limit of Detection (DoD/DOE)
LOQ	Limit of Quantitation (DoD/DOE)
MCL	EPA recommended "Maximum Contaminant Level"
MDA	Minimum Detectable Activity (Radiochemistry)
MDC	Minimum Detectable Concentration (Radiochemistry)
MDL	Method Detection Limit
ML	Minimum Level (Dioxin)
MPN	Most Probable Number
MQL	Method Quantitation Limit
NC	Not Calculated
ND	Not Detected at the reporting limit (or MDL or EDL if shown)
NEG	Negative / Absent
POS	Positive / Present
PQL	Practical Quantitation Limit
PRES	Presumptive
QC	Quality Control
RER	Relative Error Ratio (Radiochemistry)
RL	Reporting Limit or Requested Limit (Radiochemistry)
RPD	Relative Percent Difference, a measure of the relative difference between two points
TEF	Toxicity Equivalent Factor (Dioxin)
TEQ	Toxicity Equivalent Quotient (Dioxin)
TNTC	Too Numerous To Count

QC Association Summary

Client: KPRG and Associates, Inc.
Project/Site: Former Bask Dry Cleaners - 10009

Job ID: 500-198099-1

GC/MS VOA

Analysis Batch: 596086

Lab Sample ID	Client Sample ID	Prep Type	Matrix	Method	Prep Batch
500-198099-1	MW-3	Total/NA	Water	8260B	
500-198099-2	MW-4	Total/NA	Water	8260B	
500-198099-3	MW-5	Total/NA	Water	8260B	
500-198099-4	MW-7	Total/NA	Water	8260B	
500-198099-5	MW-12	Total/NA	Water	8260B	
500-198099-24	DUP-1	Total/NA	Water	8260B	
500-198099-26	Trip Blank	Total/NA	Water	8260B	
MB 500-596086/6	Method Blank	Total/NA	Water	8260B	
LCS 500-596086/4	Lab Control Sample	Total/NA	Water	8260B	

Analysis Batch: 596580

Lab Sample ID	Client Sample ID	Prep Type	Matrix	Method	Prep Batch
500-198099-6	MW-11	Total/NA	Water	8260B	
500-198099-7	MW-9	Total/NA	Water	8260B	
500-198099-8	MW-16	Total/NA	Water	8260B	
500-198099-9	MW-6	Total/NA	Water	8260B	
500-198099-9 - DL	MW-6	Total/NA	Water	8260B	
500-198099-10	MW-13	Total/NA	Water	8260B	
500-198099-11	MW-8	Total/NA	Water	8260B	
500-198099-12	MW-10	Total/NA	Water	8260B	
500-198099-13	MW-17	Total/NA	Water	8260B	
500-198099-14	MW-14	Total/NA	Water	8260B	
500-198099-15	MW-18	Total/NA	Water	8260B	
500-198099-16	MW-15	Total/NA	Water	8260B	
500-198099-17	MW-19	Total/NA	Water	8260B	
500-198099-18	MW-22	Total/NA	Water	8260B	
500-198099-19	MW-21	Total/NA	Water	8260B	
500-198099-20	PZ-1	Total/NA	Water	8260B	
500-198099-21	MW-23	Total/NA	Water	8260B	
500-198099-25	DUP-2	Total/NA	Water	8260B	
MB 500-596580/6	Method Blank	Total/NA	Water	8260B	
LCS 500-596580/4	Lab Control Sample	Total/NA	Water	8260B	
500-198099-25 MS	DUP-2	Total/NA	Water	8260B	
500-198099-25 MSD	DUP-2	Total/NA	Water	8260B	

Analysis Batch: 596859

Lab Sample ID	Client Sample ID	Prep Type	Matrix	Method	Prep Batch
500-198099-22	MW-20	Total/NA	Water	8260B	
500-198099-23	MW-24	Total/NA	Water	8260B	
MB 500-596859/7	Method Blank	Total/NA	Water	8260B	
LCS 500-596859/5	Lab Control Sample	Total/NA	Water	8260B	

Surrogate Summary

Client: KPRG and Associates, Inc.
 Project/Site: Former Bask Dry Cleaners - 10009

Job ID: 500-198099-1

Method: 8260B - Volatile Organic Compounds (GC/MS)

Matrix: Water

Prep Type: Total/NA

Percent Surrogate Recovery (Acceptance Limits)

Lab Sample ID	Client Sample ID	Percent Surrogate Recovery (Acceptance Limits)			
		BFB (72-124)	DBFM (75-120)	DCA (75-126)	TOL (75-120)
500-198099-1	MW-3	91	108	98	97
500-198099-2	MW-4	90	109	99	98
500-198099-3	MW-5	89	111	101	97
500-198099-4	MW-7	89	109	99	97
500-198099-5	MW-12	90	108	99	98
500-198099-6	MW-11	88	108	95	97
500-198099-7	MW-9	88	108	97	97
500-198099-8	MW-16	90	109	99	96
500-198099-9	MW-6	89	104	96	97
500-198099-9 - DL	MW-6	88	108	97	96
500-198099-10	MW-13	89	110	99	96
500-198099-11	MW-8	90	110	100	96
500-198099-12	MW-10	88	108	98	96
500-198099-13	MW-17	90	110	101	96
500-198099-14	MW-14	90	110	102	97
500-198099-15	MW-18	90	109	98	98
500-198099-16	MW-15	89	109	99	95
500-198099-17	MW-19	90	110	99	96
500-198099-18	MW-22	90	108	100	96
500-198099-19	MW-21	90	111	101	97
500-198099-20	PZ-1	91	110	101	96
500-198099-21	MW-23	90	111	100	96
500-198099-22	MW-20	89	108	97	97
500-198099-23	MW-24	89	109	100	97
500-198099-24	DUP-1	91	107	99	99
500-198099-25	DUP-2	93	110	100	97
500-198099-25 MS	DUP-2	87	104	95	98
500-198099-25 MSD	DUP-2	88	104	95	98
500-198099-26	Trip Blank	93	109	100	98
LCS 500-596086/4	Lab Control Sample	87	103	93	99
LCS 500-596580/4	Lab Control Sample	86	104	94	98
LCS 500-596859/5	Lab Control Sample	87	101	91	100
MB 500-596086/6	Method Blank	91	105	94	98
MB 500-596580/6	Method Blank	89	108	97	97
MB 500-596859/7	Method Blank	90	108	97	97

Surrogate Legend

- BFB = 4-Bromofluorobenzene (Surr)
- DBFM = Dibromofluoromethane
- DCA = 1,2-Dichloroethane-d4 (Surr)
- TOL = Toluene-d8 (Surr)

QC Sample Results

Client: KPRG and Associates, Inc.
 Project/Site: Former Bask Dry Cleaners - 10009

Job ID: 500-198099-1

Method: 8260B - Volatile Organic Compounds (GC/MS)

Lab Sample ID: MB 500-596086/6
Matrix: Water
Analysis Batch: 596086

Client Sample ID: Method Blank
Prep Type: Total/NA

Analyte	MB	MB	RL	MDL	Unit	D	Prepared	Analyzed	Dil Fac
	Result	Qualifier							
Carbon tetrachloride	<0.38		1.0	0.38	ug/L			04/30/21 13:35	1
Chloroethane	<0.51		1.0	0.51	ug/L			04/30/21 13:35	1
Chloroform	<0.37		2.0	0.37	ug/L			04/30/21 13:35	1
Chloromethane	<0.32		1.0	0.32	ug/L			04/30/21 13:35	1
cis-1,2-Dichloroethene	<0.41		1.0	0.41	ug/L			04/30/21 13:35	1
1,1-Dichloroethane	<0.41		1.0	0.41	ug/L			04/30/21 13:35	1
1,2-Dichloroethane	<0.39		1.0	0.39	ug/L			04/30/21 13:35	1
1,1-Dichloroethene	<0.39		1.0	0.39	ug/L			04/30/21 13:35	1
Methylene Chloride	<1.6		5.0	1.6	ug/L			04/30/21 13:35	1
Tetrachloroethene	<0.37		1.0	0.37	ug/L			04/30/21 13:35	1
trans-1,2-Dichloroethene	<0.35		1.0	0.35	ug/L			04/30/21 13:35	1
1,1,1-Trichloroethane	<0.38		1.0	0.38	ug/L			04/30/21 13:35	1
1,1,2-Trichloroethane	<0.35		1.0	0.35	ug/L			04/30/21 13:35	1
Trichloroethene	<0.16		0.50	0.16	ug/L			04/30/21 13:35	1
Vinyl chloride	<0.20		1.0	0.20	ug/L			04/30/21 13:35	1

Surrogate	MB	MB	Limits	Prepared	Analyzed	Dil Fac
	%Recovery	Qualifier				
4-Bromofluorobenzene (Surr)	91		72 - 124		04/30/21 13:35	1
Dibromofluoromethane	105		75 - 120		04/30/21 13:35	1
1,2-Dichloroethane-d4 (Surr)	94		75 - 126		04/30/21 13:35	1
Toluene-d8 (Surr)	98		75 - 120		04/30/21 13:35	1

Lab Sample ID: LCS 500-596086/4
Matrix: Water
Analysis Batch: 596086

Client Sample ID: Lab Control Sample
Prep Type: Total/NA

Analyte	Spike Added	LCS Result	LCS Qualifier	Unit	D	%Rec	%Rec. Limits
Chloroethane	50.0	47.3		ug/L		95	48 - 136
Chloroform	50.0	45.8		ug/L		92	70 - 120
Chloromethane	50.0	30.5		ug/L		61	56 - 152
cis-1,2-Dichloroethene	50.0	48.9		ug/L		98	70 - 125
1,1-Dichloroethane	50.0	46.0		ug/L		92	70 - 125
1,2-Dichloroethane	50.0	43.5		ug/L		87	68 - 127
1,1-Dichloroethene	50.0	50.2		ug/L		100	67 - 122
Methylene Chloride	50.0	46.5		ug/L		93	69 - 125
Tetrachloroethene	50.0	49.5		ug/L		99	70 - 128
trans-1,2-Dichloroethene	50.0	50.1		ug/L		100	70 - 125
1,1,1-Trichloroethane	50.0	47.4		ug/L		95	70 - 125
1,1,2-Trichloroethane	50.0	46.2		ug/L		92	71 - 130
Trichloroethene	50.0	52.5		ug/L		105	70 - 125
Vinyl chloride	50.0	40.4		ug/L		81	64 - 126

Surrogate	LCS	LCS	Limits
	%Recovery	Qualifier	
4-Bromofluorobenzene (Surr)	87		72 - 124
Dibromofluoromethane	103		75 - 120
1,2-Dichloroethane-d4 (Surr)	93		75 - 126
Toluene-d8 (Surr)	99		75 - 120

Eurofins TestAmerica, Chicago

QC Sample Results

Client: KPRG and Associates, Inc.
 Project/Site: Former Bask Dry Cleaners - 10009

Job ID: 500-198099-1

Method: 8260B - Volatile Organic Compounds (GC/MS)

Lab Sample ID: MB 500-596580/6
Matrix: Water
Analysis Batch: 596580

Client Sample ID: Method Blank
Prep Type: Total/NA

Analyte	MB	MB	RL	MDL	Unit	D	Prepared	Analyzed	Dil Fac
	Result	Qualifier							
Carbon tetrachloride	<0.38		1.0	0.38	ug/L			05/04/21 11:07	1
Chloroethane	<0.51		1.0	0.51	ug/L			05/04/21 11:07	1
Chloroform	<0.37		2.0	0.37	ug/L			05/04/21 11:07	1
Chloromethane	<0.32		1.0	0.32	ug/L			05/04/21 11:07	1
cis-1,2-Dichloroethene	<0.41		1.0	0.41	ug/L			05/04/21 11:07	1
1,1-Dichloroethane	<0.41		1.0	0.41	ug/L			05/04/21 11:07	1
1,2-Dichloroethane	<0.39		1.0	0.39	ug/L			05/04/21 11:07	1
1,1-Dichloroethene	<0.39		1.0	0.39	ug/L			05/04/21 11:07	1
Methylene Chloride	<1.6		5.0	1.6	ug/L			05/04/21 11:07	1
Tetrachloroethene	<0.37		1.0	0.37	ug/L			05/04/21 11:07	1
trans-1,2-Dichloroethene	<0.35		1.0	0.35	ug/L			05/04/21 11:07	1
1,1,1-Trichloroethane	<0.38		1.0	0.38	ug/L			05/04/21 11:07	1
1,1,2-Trichloroethane	<0.35		1.0	0.35	ug/L			05/04/21 11:07	1
Trichloroethene	<0.16		0.50	0.16	ug/L			05/04/21 11:07	1
Vinyl chloride	<0.20		1.0	0.20	ug/L			05/04/21 11:07	1

Surrogate	MB	MB	Limits	Prepared	Analyzed	Dil Fac
	%Recovery	Qualifier				
4-Bromofluorobenzene (Surr)	89		72 - 124		05/04/21 11:07	1
Dibromofluoromethane	108		75 - 120		05/04/21 11:07	1
1,2-Dichloroethane-d4 (Surr)	97		75 - 126		05/04/21 11:07	1
Toluene-d8 (Surr)	97		75 - 120		05/04/21 11:07	1

Lab Sample ID: LCS 500-596580/4
Matrix: Water
Analysis Batch: 596580

Client Sample ID: Lab Control Sample
Prep Type: Total/NA

Analyte	Spike Added	LCS Result	LCS Qualifier	Unit	D	%Rec	%Rec. Limits
Chloroethane	50.0	49.5		ug/L		99	48 - 136
Chloroform	50.0	48.3		ug/L		97	70 - 120
Chloromethane	50.0	41.3		ug/L		83	56 - 152
cis-1,2-Dichloroethene	50.0	51.1		ug/L		102	70 - 125
1,1-Dichloroethane	50.0	48.7		ug/L		97	70 - 125
1,2-Dichloroethane	50.0	46.2		ug/L		92	68 - 127
1,1-Dichloroethene	50.0	52.6		ug/L		105	67 - 122
Methylene Chloride	50.0	49.5		ug/L		99	69 - 125
Tetrachloroethene	50.0	52.0		ug/L		104	70 - 128
trans-1,2-Dichloroethene	50.0	52.4		ug/L		105	70 - 125
1,1,1-Trichloroethane	50.0	49.7		ug/L		99	70 - 125
1,1,2-Trichloroethane	50.0	49.3		ug/L		99	71 - 130
Trichloroethene	50.0	55.7		ug/L		111	70 - 125
Vinyl chloride	50.0	46.3		ug/L		93	64 - 126

Surrogate	LCS	LCS	Limits
	%Recovery	Qualifier	
4-Bromofluorobenzene (Surr)	86		72 - 124
Dibromofluoromethane	104		75 - 120
1,2-Dichloroethane-d4 (Surr)	94		75 - 126
Toluene-d8 (Surr)	98		75 - 120

Eurofins TestAmerica, Chicago

QC Sample Results

Client: KPRG and Associates, Inc.
 Project/Site: Former Bask Dry Cleaners - 10009

Job ID: 500-198099-1

Method: 8260B - Volatile Organic Compounds (GC/MS)

Lab Sample ID: 500-198099-25 MS

Matrix: Water

Analysis Batch: 596580

Client Sample ID: DUP-2

Prep Type: Total/NA

Analyte	Sample Result	Sample Qualifier	Spike Added	MS Result	MS Qualifier	Unit	D	%Rec	%Rec. Limits
Carbon tetrachloride	<0.38		50.0	50.5		ug/L		101	59 - 133
Chloroethane	<0.51		50.0	47.4		ug/L		95	48 - 136
Chloroform	<0.37		50.0	47.3		ug/L		95	70 - 120
Chloromethane	<0.32		50.0	39.1		ug/L		78	56 - 152
cis-1,2-Dichloroethene	4.3		50.0	54.1		ug/L		100	70 - 125
1,1-Dichloroethane	<0.41		50.0	47.3		ug/L		95	70 - 125
1,2-Dichloroethane	<0.39		50.0	46.1		ug/L		92	68 - 127
1,1-Dichloroethene	<0.39		50.0	50.6		ug/L		101	67 - 122
Methylene Chloride	<1.6		50.0	49.3		ug/L		99	69 - 125
Tetrachloroethene	88		50.0	139		ug/L		101	70 - 128
trans-1,2-Dichloroethene	<0.35		50.0	50.5		ug/L		101	70 - 125
1,1,1-Trichloroethane	<0.38		50.0	47.6		ug/L		95	70 - 125
1,1,2-Trichloroethane	<0.35		50.0	49.8		ug/L		100	71 - 130
Trichloroethene	3.5		50.0	56.7		ug/L		106	70 - 125
Vinyl chloride	<0.20		50.0	43.7		ug/L		87	64 - 126

Surrogate	MS %Recovery	MS Qualifier	MS Limits
4-Bromofluorobenzene (Surr)	87		72 - 124
Dibromofluoromethane	104		75 - 120
1,2-Dichloroethane-d4 (Surr)	95		75 - 126
Toluene-d8 (Surr)	98		75 - 120

Lab Sample ID: 500-198099-25 MSD

Matrix: Water

Analysis Batch: 596580

Client Sample ID: DUP-2

Prep Type: Total/NA

Analyte	Sample Result	Sample Qualifier	Spike Added	MSD Result	MSD Qualifier	Unit	D	%Rec	%Rec. Limits	RPD	RPD Limit
Carbon tetrachloride	<0.38		50.0	50.2		ug/L		100	59 - 133	1	20
Chloroethane	<0.51		50.0	48.3		ug/L		97	48 - 136	2	20
Chloroform	<0.37		50.0	46.4		ug/L		93	70 - 120	2	20
Chloromethane	<0.32		50.0	39.1		ug/L		78	56 - 152	0	20
cis-1,2-Dichloroethene	4.3		50.0	53.5		ug/L		98	70 - 125	1	20
1,1-Dichloroethane	<0.41		50.0	46.8		ug/L		94	70 - 125	1	20
1,2-Dichloroethane	<0.39		50.0	45.0		ug/L		90	68 - 127	2	20
1,1-Dichloroethene	<0.39		50.0	50.1		ug/L		100	67 - 122	1	20
Methylene Chloride	<1.6		50.0	48.0		ug/L		96	69 - 125	3	20
Tetrachloroethene	88		50.0	139		ug/L		102	70 - 128	0	20
trans-1,2-Dichloroethene	<0.35		50.0	49.9		ug/L		100	70 - 125	1	20
1,1,1-Trichloroethane	<0.38		50.0	47.6		ug/L		95	70 - 125	0	20
1,1,2-Trichloroethane	<0.35		50.0	48.0		ug/L		96	71 - 130	4	20
Trichloroethene	3.5		50.0	56.7		ug/L		106	70 - 125	0	20
Vinyl chloride	<0.20		50.0	45.6		ug/L		91	64 - 126	4	20

Surrogate	MSD %Recovery	MSD Qualifier	MSD Limits
4-Bromofluorobenzene (Surr)	88		72 - 124
Dibromofluoromethane	104		75 - 120
1,2-Dichloroethane-d4 (Surr)	95		75 - 126
Toluene-d8 (Surr)	98		75 - 120

Eurofins TestAmerica, Chicago

QC Sample Results

Client: KPRG and Associates, Inc.
 Project/Site: Former Bask Dry Cleaners - 10009

Job ID: 500-198099-1

Method: 8260B - Volatile Organic Compounds (GC/MS)

Lab Sample ID: MB 500-596859/7
Matrix: Water
Analysis Batch: 596859

Client Sample ID: Method Blank
Prep Type: Total/NA

Analyte	MB	MB	RL	MDL	Unit	D	Prepared	Analyzed	Dil Fac
	Result	Qualifier							
Carbon tetrachloride	<0.38		1.0	0.38	ug/L			05/05/21 12:20	1
Chloroethane	<0.51		1.0	0.51	ug/L			05/05/21 12:20	1
Chloroform	<0.37		2.0	0.37	ug/L			05/05/21 12:20	1
Chloromethane	<0.32		1.0	0.32	ug/L			05/05/21 12:20	1
cis-1,2-Dichloroethene	<0.41		1.0	0.41	ug/L			05/05/21 12:20	1
1,1-Dichloroethane	<0.41		1.0	0.41	ug/L			05/05/21 12:20	1
1,2-Dichloroethane	<0.39		1.0	0.39	ug/L			05/05/21 12:20	1
1,1-Dichloroethene	<0.39		1.0	0.39	ug/L			05/05/21 12:20	1
Methylene Chloride	<1.6		5.0	1.6	ug/L			05/05/21 12:20	1
Tetrachloroethene	<0.37		1.0	0.37	ug/L			05/05/21 12:20	1
trans-1,2-Dichloroethene	<0.35		1.0	0.35	ug/L			05/05/21 12:20	1
1,1,1-Trichloroethane	<0.38		1.0	0.38	ug/L			05/05/21 12:20	1
1,1,2-Trichloroethane	<0.35		1.0	0.35	ug/L			05/05/21 12:20	1
Trichloroethene	<0.16		0.50	0.16	ug/L			05/05/21 12:20	1
Vinyl chloride	<0.20		1.0	0.20	ug/L			05/05/21 12:20	1

Surrogate	MB	MB	Limits	Prepared	Analyzed	Dil Fac
	%Recovery	Qualifier				
4-Bromofluorobenzene (Surr)	90		72 - 124		05/05/21 12:20	1
Dibromofluoromethane	108		75 - 120		05/05/21 12:20	1
1,2-Dichloroethane-d4 (Surr)	97		75 - 126		05/05/21 12:20	1
Toluene-d8 (Surr)	97		75 - 120		05/05/21 12:20	1

Lab Sample ID: LCS 500-596859/5
Matrix: Water
Analysis Batch: 596859

Client Sample ID: Lab Control Sample
Prep Type: Total/NA

Analyte	Spike Added	LCS Result	LCS Qualifier	Unit	D	%Rec	%Rec. Limits
Chloroethane	50.0	45.2		ug/L		90	48 - 136
Chloroform	50.0	45.4		ug/L		91	70 - 120
Chloromethane	50.0	32.1		ug/L		64	56 - 152
cis-1,2-Dichloroethene	50.0	48.0		ug/L		96	70 - 125
1,1-Dichloroethane	50.0	45.6		ug/L		91	70 - 125
1,2-Dichloroethane	50.0	43.1		ug/L		86	68 - 127
1,1-Dichloroethene	50.0	48.4		ug/L		97	67 - 122
Methylene Chloride	50.0	45.4		ug/L		91	69 - 125
Tetrachloroethene	50.0	51.3		ug/L		103	70 - 128
trans-1,2-Dichloroethene	50.0	48.8		ug/L		98	70 - 125
1,1,1-Trichloroethane	50.0	47.2		ug/L		94	70 - 125
1,1,2-Trichloroethane	50.0	48.1		ug/L		96	71 - 130
Trichloroethene	50.0	52.9		ug/L		106	70 - 125
Vinyl chloride	50.0	41.6		ug/L		83	64 - 126

Surrogate	LCS	LCS	Limits
	%Recovery	Qualifier	
4-Bromofluorobenzene (Surr)	87		72 - 124
Dibromofluoromethane	101		75 - 120
1,2-Dichloroethane-d4 (Surr)	91		75 - 126
Toluene-d8 (Surr)	100		75 - 120

Euofins TestAmerica, Chicago

Lab Chronicle

Client: KPRG and Associates, Inc.
Project/Site: Former Bask Dry Cleaners - 10009

Job ID: 500-198099-1

Client Sample ID: MW-3
Date Collected: 04/19/21 13:25
Date Received: 04/23/21 09:30

Lab Sample ID: 500-198099-1
Matrix: Water

Prep Type	Batch Type	Batch Method	Run	Dilution Factor	Batch Number	Prepared or Analyzed	Analyst	Lab
Total/NA	Analysis	8260B		1	596086	04/30/21 18:18	PMF	TAL CHI

Client Sample ID: MW-4
Date Collected: 04/19/21 14:15
Date Received: 04/23/21 09:30

Lab Sample ID: 500-198099-2
Matrix: Water

Prep Type	Batch Type	Batch Method	Run	Dilution Factor	Batch Number	Prepared or Analyzed	Analyst	Lab
Total/NA	Analysis	8260B		1	596086	04/30/21 18:47	PMF	TAL CHI

Client Sample ID: MW-5
Date Collected: 04/19/21 14:50
Date Received: 04/23/21 09:30

Lab Sample ID: 500-198099-3
Matrix: Water

Prep Type	Batch Type	Batch Method	Run	Dilution Factor	Batch Number	Prepared or Analyzed	Analyst	Lab
Total/NA	Analysis	8260B		1	596086	04/30/21 19:15	PMF	TAL CHI

Client Sample ID: MW-7
Date Collected: 04/19/21 15:30
Date Received: 04/23/21 09:30

Lab Sample ID: 500-198099-4
Matrix: Water

Prep Type	Batch Type	Batch Method	Run	Dilution Factor	Batch Number	Prepared or Analyzed	Analyst	Lab
Total/NA	Analysis	8260B		1	596086	04/30/21 19:44	PMF	TAL CHI

Client Sample ID: MW-12
Date Collected: 04/19/21 16:02
Date Received: 04/23/21 09:30

Lab Sample ID: 500-198099-5
Matrix: Water

Prep Type	Batch Type	Batch Method	Run	Dilution Factor	Batch Number	Prepared or Analyzed	Analyst	Lab
Total/NA	Analysis	8260B		1	596086	04/30/21 20:12	PMF	TAL CHI

Client Sample ID: MW-11
Date Collected: 04/20/21 11:00
Date Received: 04/23/21 09:30

Lab Sample ID: 500-198099-6
Matrix: Water

Prep Type	Batch Type	Batch Method	Run	Dilution Factor	Batch Number	Prepared or Analyzed	Analyst	Lab
Total/NA	Analysis	8260B		1	596580	05/04/21 11:37	PMF	TAL CHI

Client Sample ID: MW-9
Date Collected: 04/20/21 11:51
Date Received: 04/23/21 09:30

Lab Sample ID: 500-198099-7
Matrix: Water

Prep Type	Batch Type	Batch Method	Run	Dilution Factor	Batch Number	Prepared or Analyzed	Analyst	Lab
Total/NA	Analysis	8260B		1	596580	05/04/21 12:05	PMF	TAL CHI

Lab Chronicle

Client: KPRG and Associates, Inc.
Project/Site: Former Bask Dry Cleaners - 10009

Job ID: 500-198099-1

Client Sample ID: MW-16
Date Collected: 04/20/21 12:13
Date Received: 04/23/21 09:30

Lab Sample ID: 500-198099-8
Matrix: Water

Prep Type	Batch Type	Batch Method	Run	Dilution Factor	Batch Number	Prepared or Analyzed	Analyst	Lab
Total/NA	Analysis	8260B		1	596580	05/04/21 12:34	PMF	TAL CHI

Client Sample ID: MW-6
Date Collected: 04/20/21 12:41
Date Received: 04/23/21 09:30

Lab Sample ID: 500-198099-9
Matrix: Water

Prep Type	Batch Type	Batch Method	Run	Dilution Factor	Batch Number	Prepared or Analyzed	Analyst	Lab
Total/NA	Analysis	8260B		1	596580	05/04/21 13:02	PMF	TAL CHI
Total/NA	Analysis	8260B	DL	10	596580	05/04/21 13:30	PMF	TAL CHI

Client Sample ID: MW-13
Date Collected: 04/20/21 13:00
Date Received: 04/23/21 09:30

Lab Sample ID: 500-198099-10
Matrix: Water

Prep Type	Batch Type	Batch Method	Run	Dilution Factor	Batch Number	Prepared or Analyzed	Analyst	Lab
Total/NA	Analysis	8260B		1	596580	05/04/21 13:58	PMF	TAL CHI

Client Sample ID: MW-8
Date Collected: 04/20/21 13:51
Date Received: 04/23/21 09:30

Lab Sample ID: 500-198099-11
Matrix: Water

Prep Type	Batch Type	Batch Method	Run	Dilution Factor	Batch Number	Prepared or Analyzed	Analyst	Lab
Total/NA	Analysis	8260B		1	596580	05/04/21 14:27	PMF	TAL CHI

Client Sample ID: MW-10
Date Collected: 04/20/21 14:45
Date Received: 04/23/21 09:30

Lab Sample ID: 500-198099-12
Matrix: Water

Prep Type	Batch Type	Batch Method	Run	Dilution Factor	Batch Number	Prepared or Analyzed	Analyst	Lab
Total/NA	Analysis	8260B		1	596580	05/04/21 14:56	PMF	TAL CHI

Client Sample ID: MW-17
Date Collected: 04/20/21 15:31
Date Received: 04/23/21 09:30

Lab Sample ID: 500-198099-13
Matrix: Water

Prep Type	Batch Type	Batch Method	Run	Dilution Factor	Batch Number	Prepared or Analyzed	Analyst	Lab
Total/NA	Analysis	8260B		1	596580	05/04/21 15:24	PMF	TAL CHI

Client Sample ID: MW-14
Date Collected: 04/20/21 16:10
Date Received: 04/23/21 09:30

Lab Sample ID: 500-198099-14
Matrix: Water

Prep Type	Batch Type	Batch Method	Run	Dilution Factor	Batch Number	Prepared or Analyzed	Analyst	Lab
Total/NA	Analysis	8260B		1	596580	05/04/21 15:53	PMF	TAL CHI

Lab Chronicle

Client: KPRG and Associates, Inc.
Project/Site: Former Bask Dry Cleaners - 10009

Job ID: 500-198099-1

Client Sample ID: MW-18
Date Collected: 04/21/21 09:20
Date Received: 04/23/21 09:30

Lab Sample ID: 500-198099-15
Matrix: Water

Prep Type	Batch Type	Batch Method	Run	Dilution Factor	Batch Number	Prepared or Analyzed	Analyst	Lab
Total/NA	Analysis	8260B		1	596580	05/04/21 16:21	PMF	TAL CHI

Client Sample ID: MW-15
Date Collected: 04/21/21 09:58
Date Received: 04/23/21 09:30

Lab Sample ID: 500-198099-16
Matrix: Water

Prep Type	Batch Type	Batch Method	Run	Dilution Factor	Batch Number	Prepared or Analyzed	Analyst	Lab
Total/NA	Analysis	8260B		1	596580	05/04/21 16:49	PMF	TAL CHI

Client Sample ID: MW-19
Date Collected: 04/21/21 10:36
Date Received: 04/23/21 09:30

Lab Sample ID: 500-198099-17
Matrix: Water

Prep Type	Batch Type	Batch Method	Run	Dilution Factor	Batch Number	Prepared or Analyzed	Analyst	Lab
Total/NA	Analysis	8260B		1	596580	05/04/21 17:18	PMF	TAL CHI

Client Sample ID: MW-22
Date Collected: 04/21/21 12:18
Date Received: 04/23/21 09:30

Lab Sample ID: 500-198099-18
Matrix: Water

Prep Type	Batch Type	Batch Method	Run	Dilution Factor	Batch Number	Prepared or Analyzed	Analyst	Lab
Total/NA	Analysis	8260B		1	596580	05/04/21 17:46	PMF	TAL CHI

Client Sample ID: MW-21
Date Collected: 04/21/21 13:10
Date Received: 04/23/21 09:30

Lab Sample ID: 500-198099-19
Matrix: Water

Prep Type	Batch Type	Batch Method	Run	Dilution Factor	Batch Number	Prepared or Analyzed	Analyst	Lab
Total/NA	Analysis	8260B		1	596580	05/04/21 18:15	PMF	TAL CHI

Client Sample ID: PZ-1
Date Collected: 04/21/21 15:45
Date Received: 04/23/21 09:30

Lab Sample ID: 500-198099-20
Matrix: Water

Prep Type	Batch Type	Batch Method	Run	Dilution Factor	Batch Number	Prepared or Analyzed	Analyst	Lab
Total/NA	Analysis	8260B		1	596580	05/04/21 18:43	PMF	TAL CHI

Client Sample ID: MW-23
Date Collected: 04/22/21 09:45
Date Received: 04/23/21 09:30

Lab Sample ID: 500-198099-21
Matrix: Water

Prep Type	Batch Type	Batch Method	Run	Dilution Factor	Batch Number	Prepared or Analyzed	Analyst	Lab
Total/NA	Analysis	8260B		1	596580	05/04/21 19:12	PMF	TAL CHI

Lab Chronicle

Client: KPRG and Associates, Inc.
Project/Site: Former Bask Dry Cleaners - 10009

Job ID: 500-198099-1

Client Sample ID: MW-20

Date Collected: 04/22/21 10:20

Date Received: 04/23/21 09:30

Lab Sample ID: 500-198099-22

Matrix: Water

Prep Type	Batch Type	Batch Method	Run	Dilution Factor	Batch Number	Prepared or Analyzed	Analyst	Lab
Total/NA	Analysis	8260B		1	596859	05/05/21 14:14	PMF	TAL CHI

Client Sample ID: MW-24

Date Collected: 04/22/21 10:56

Date Received: 04/23/21 09:30

Lab Sample ID: 500-198099-23

Matrix: Water

Prep Type	Batch Type	Batch Method	Run	Dilution Factor	Batch Number	Prepared or Analyzed	Analyst	Lab
Total/NA	Analysis	8260B		1	596859	05/05/21 14:42	PMF	TAL CHI

Client Sample ID: DUP-1

Date Collected: 04/19/21 00:00

Date Received: 04/23/21 09:30

Lab Sample ID: 500-198099-24

Matrix: Water

Prep Type	Batch Type	Batch Method	Run	Dilution Factor	Batch Number	Prepared or Analyzed	Analyst	Lab
Total/NA	Analysis	8260B		1	596086	04/30/21 20:41	PMF	TAL CHI

Client Sample ID: DUP-2

Date Collected: 04/21/21 00:00

Date Received: 04/23/21 09:30

Lab Sample ID: 500-198099-25

Matrix: Water

Prep Type	Batch Type	Batch Method	Run	Dilution Factor	Batch Number	Prepared or Analyzed	Analyst	Lab
Total/NA	Analysis	8260B		1	596580	05/04/21 19:40	PMF	TAL CHI

Client Sample ID: Trip Blank

Date Collected: 04/19/21 00:00

Date Received: 04/23/21 09:30

Lab Sample ID: 500-198099-26

Matrix: Water

Prep Type	Batch Type	Batch Method	Run	Dilution Factor	Batch Number	Prepared or Analyzed	Analyst	Lab
Total/NA	Analysis	8260B		1	596086	04/30/21 21:09	PMF	TAL CHI

Laboratory References:

TAL CHI = Eurofins TestAmerica, Chicago, 2417 Bond Street, University Park, IL 60484, TEL (708)534-5200

Accreditation/Certification Summary

Client: KPRG and Associates, Inc.
Project/Site: Former Bask Dry Cleaners - 10009

Job ID: 500-198099-1

Laboratory: Eurofins TestAmerica, Chicago

The accreditations/certifications listed below are applicable to this report.

Authority	Program	Identification Number	Expiration Date
Wisconsin	State	999580010	08-31-21

1

2

3

4

5

6

7

8

9

10

11

12

13

14

15

Login Sample Receipt Checklist

Client: KPRG and Associates, Inc.

Job Number: 500-198099-1

Login Number: 198099

List Source: Eurofins TestAmerica, Chicago

List Number: 1

Creator: Scott, Sherri L

Question	Answer	Comment
Radioactivity wasn't checked or is \leq background as measured by a survey meter.	True	
The cooler's custody seal, if present, is intact.	True	
Sample custody seals, if present, are intact.	True	
The cooler or samples do not appear to have been compromised or tampered with.	True	
Samples were received on ice.	True	
Cooler Temperature is acceptable.	True	
Cooler Temperature is recorded.	True	1.2
COC is present.	True	
COC is filled out in ink and legible.	True	
COC is filled out with all pertinent information.	True	
Is the Field Sampler's name present on COC?	True	
There are no discrepancies between the containers received and the COC.	True	
Samples are received within Holding Time (excluding tests with immediate HTs)	True	
Sample containers have legible labels.	True	
Containers are not broken or leaking.	True	
Sample collection date/times are provided.	True	
Appropriate sample containers are used.	True	
Sample bottles are completely filled.	True	
Sample Preservation Verified.	True	
There is sufficient vol. for all requested analyses, incl. any requested MS/MSDs	True	
Containers requiring zero headspace have no headspace or bubble is <math><6\text{mm}</math> (1/4").	True	
Multiphasic samples are not present.	True	
Samples do not require splitting or compositing.	True	
Residual Chlorine Checked.	N/A	

