

K P R G

ENVIRONMENTAL CONSULTATION & REMEDIATION

KPRG and Associates, Inc.

DATA TRANSMITTAL

September 29, 2023

Mr. J. Gregory Moll, P.G.
Wisconsin Department of Natural Resources
2300 N. Dr. Martin Luther King Drive
Milwaukee, WI 53212

VIA E-mail and FedEx

KPRG Project 10009

Re: Data Transmittal September 2023
Former Bask Dry Cleaners – Waukesha, WI
BRRTS# 02-68-297669, FID# 268188800

Dear Mr. Moll:

KPRG and Associates, Inc. (KPRG), completed a complete round of groundwater sampling for the above referenced site following a polishing injection event during the week of July 5, 2022. An Injection Summary Report, dated September 13, 2022, was submitted to you under separate cover. Wells MW-3 through MW-24, and PZ-1 were sampled during the week of September 5th, 2023 and analyzed for chlorinated volatile organic compounds (CVOCs).

A monitoring well location map is provided on Figure 1 and a groundwater flow map is provided on Figure 2. Table 1 provides a summary of the groundwater elevation data and Table 2 provides a summary of the CVOC data. A copy of the analytical data package is included in Attachment 1.

If there are any questions, please contact me at 262-781-0475.

Sincerely,
KPRG and Associates, Inc.



Patrick Allenstein, P.G.
Senior Geologist



Kaelyn Sperle
Project Geologist

cc: Mr. Nicholas Boerke, former Bask Dry Cleaners

FIGURES



LEGEND

MW-12 EXISTING MONITORING WELL, PIEZOMETER LOCATION

MW-1 ABANDONED MONITORING WELL, PIEZOMETER LOCATION

ENVIRONMENTAL CONSULTATION & REMEDIATION

K P R G

KPRG and Associates, Inc.

14665 West Lisbon Road, Suite 1A Brookfield, Wisconsin 53005 Telephone 262-781-0475 Facsimile 262-781-0478

414 Plaza Drive, Suite 106 Westmont, Illinois 60559 Telephone 630-325-1300 Facsimile 630-325-1593

MONITORING WELLS LOCATION MAP

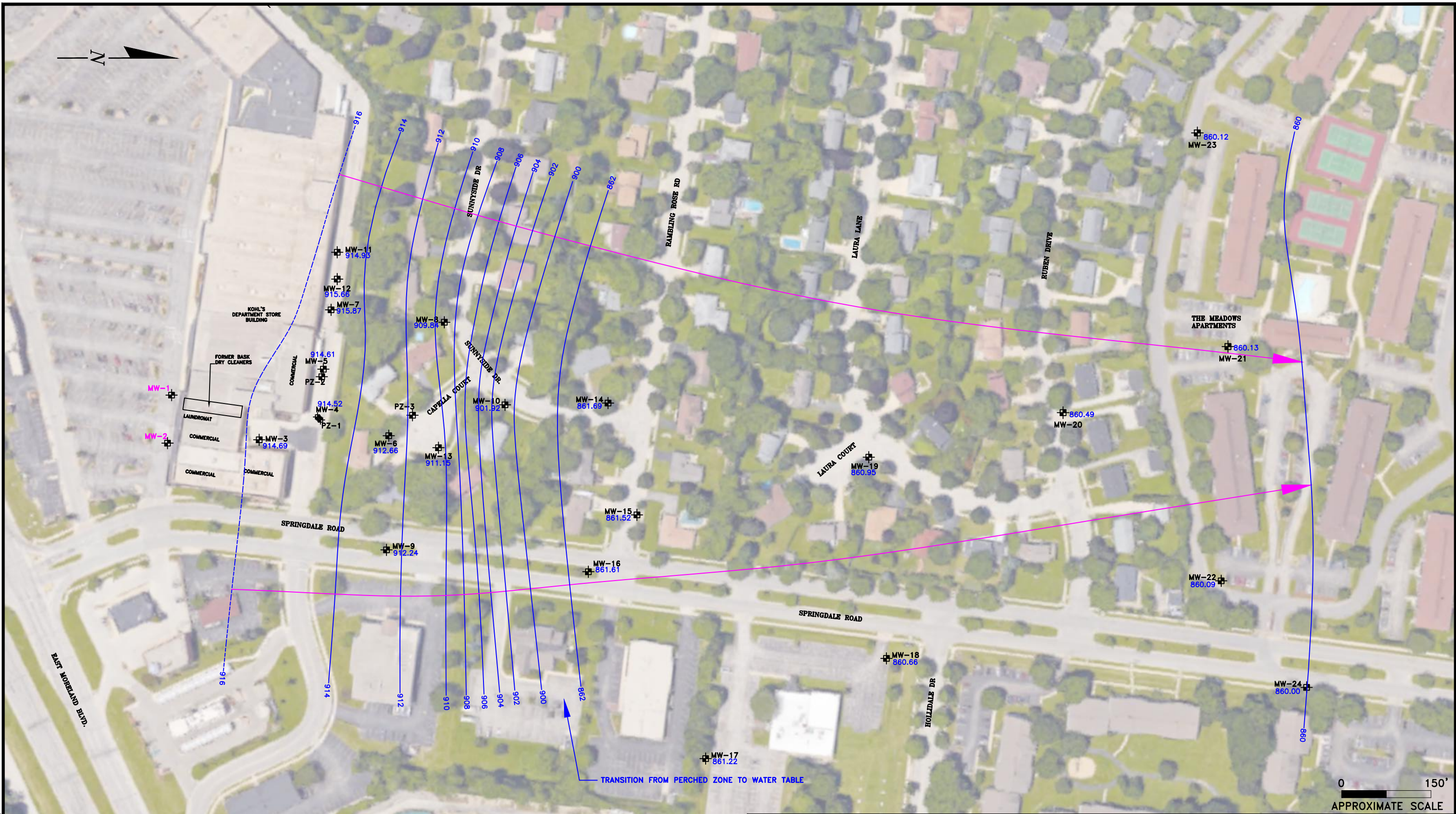
WESTBROOK SHOPPING CENTER
WAUKESHA, WISCONSIN

Scale: 1" = 130'



Date: January 26, 2021



KPRG Project No. 10009

FIGURE 1



LEGEND

- MW-12  EXISTING MONITORING WELL, PIEZOMETER LOCATION
- MW-2  ABANDONED LOCATION

- 914  GROUNDWATER CONTOUR
-  GROUNDWATER FLOW DIRECTION

ENVIRONMENTAL CONSULTATION & REMEDIATION

K P R G

KPRG and Associates, inc.

14665 West Lisbon Road, Suite 1A Brookfield, Wisconsin 53005 Telephone 262-781-0475 Facsimile 262-781-0478

414 Plaza Drive, Suite 106 Westmont, Illinois 60559 Telephone 630-325-1300 Facsimile 630-325-1593

GROUNDWATER CONTOUR MAP SEPTEMBER 2023

WESTBROOK SHOPPING CENTER
WAUKESHA, WISCONSIN

Scale: 1" = 150'

Date: September 27, 2023

KPRG Project No. 10009

FIGURE 2

TABLES

Table 1. Water Level Elevation Table - Former Bask Dry Cleaners, Westbrook Shopping Center, Waukesha, WI

DATE	USGS Datum Elevations		10/22/2014		6/30/2015		6/1/2016		9/20/2016		5/22/2017		6/23/2017		9/29/2017		7/16/2018		9/21/2018		12/19/2018		3/19/2019	
	WELL	Ground	Top of Casing	Depth to Water	Water Elev	Depth to Water	Water Elev	Depth to Water	Water Elev	Depth to Water	Water Elev	Depth to Water	Water Elev	Depth to Water	Water Elev	Depth to Water	Water Elev	Depth to Water	Water Elev	Depth to Water	Water Elev	Depth to Water	Water Elev	Depth to Water
MW-1	941.64	941.34	26.29	914.96	27.13	914.12	26.42	914.92	26.61	914.73	25.29	916.05	25.09	916.25	NM	NM	25.41	915.93	NM	NM	NM	NM	NM	NM
MW-2	942.41	942.15	27.04	915.03	27.91	914.16	27.14	915.01	27.30	914.85	26.16	915.99	26.00	916.15	NM	NM	NM	NM	NM	NM	NM	NM	NM	NM
MW-3	937.79	937.48	23.12	914.20	23.50	913.82	23.13	914.35	23.35	914.13	22.96	914.52	22.01	915.47	NM	NM	22.42	915.06	NM	NM	NM	NM	NM	NM
MW-4	932.33	932.09	17.90	913.99	DRY	DRY	17.94	914.15	18.34	913.75	16.70	915.39	16.81	915.28	NM	NM	17.23	914.86	NM	NM	NM	NM	NM	NM
MW-5	934.42	934.19	20.02	914.06	20.68	913.40	19.93	914.26	20.15	914.04	18.65	915.54	18.71	915.48	NM	NM	19.21	914.98	NM	NM	NM	NM	NM	NM
MW-6	925.93	925.78	13.35	912.30	13.99	911.66	13.14	912.64	13.59	912.19	11.65	914.13	12.05	913.73	NM	NM	12.42	913.36	NM	NM	NM	NM	NM	NM
MW-7	935.95	935.90	20.56	915.02	21.27	914.31	20.56	915.34	20.66	915.24	19.54	916.36	19.45	916.45	NM	NM	19.94	915.96	NM	NM	NM	NM	NM	NM
MW-8	923.36	923.05	13.84	909.08	14.09	908.83	14.61	908.44	13.75	909.30	12.43	910.62	12.91	910.14	NM	NM	13.25	909.80	NM	NM	NM	NM	NM	NM
MW-9	919.56	919.44	7.11	912.12	8.21	911.02	7.30	912.14	7.70	911.74	5.74	913.70	5.96	913.48	NM	NM	6.58	912.86	NM	NM	NM	NM	NM	NM
MW-10	918.24	917.99	14.86	903.02	15.15	902.73	13.82	904.17	15.29	902.70	11.68	906.31	12.66	905.33	NM	NM	13.49	904.50	NM	NM	NM	NM	NM	NM
MW-11	935.89	935.81	21.21	NS	22.00	NS	21.22	914.59	21.38	914.43	19.93	915.88	19.92	915.89	NM	NM	20.32	915.49	NM	NM	NM	NM	NM	NM
MW-12	935.52	935.15	19.65	NS	20.69	NS	19.95	915.20	20.05	915.10	19.03	916.12	18.81	916.34	NM	NM	19.28	915.87	NM	NM	NM	NM	NM	NM
MW-13	922.85	922.36	11.72	NS	11.72	NS	11.42	910.94	11.05	911.31	10.39	911.97	10.84	911.52	NM	NM	10.96	911.40	NM	NM	NM	NM	NM	NM
MW-14	908.43	908.25	NI	NI	NI	NI	47.69	860.56	47.98	860.27	45.69	862.56	45.21	863.04	NM	NM	46.34	861.91	NM	NM	NM	NM	NM	NM
MW-15	903.79	903.57	NI	NI	NI	NI	43.14	860.43	43.44	860.13	41.15	862.42	40.66	862.91	NM	NM	41.84	861.73	NM	NM	NM	NM	NM	NM
MW-16	903.88	903.61	NI	NI	NI	NI	43.15	860.46	43.44	860.17	21.17	882.44	40.68	862.93	NM	NM	41.83	861.78	NM	NM	NM	NM	NM	NM
MW-17	894.74	894.24	NI	NI	NI	NI	NI	NI	NI	NI	32.06	862.18	31.61	862.63	31.85	862.39	32.68	861.56	NM	NM	NM	NM	NM	NM
MW-18	898.15	898.48	NI	NI	NI	NI	NI	NI	NI	NI	36.43	862.05	35.99	862.49	36.35	862.13	37.20	861.28	NM	NM	NM	NM	NM	NM
MW-19	894.84	895.38	NI	NI	NI	NI	NI	NI	NI	NI	30.96	864.42	32.41	862.97	32.69	862.69	33.59	861.79	32.91	862.47	NM	NM	NM	NM
MW-20	890.20	890.44	NI	NI	NI	NI	NI	NI	NI	NI	N	N	NI	NI	NI	NI	28.43	861.01	28.64	861.80	28.17	862.27	28.25	862.19
MW-21	893.52	893.13	NI	NI	NI	NI	NI	NI	NI	NI	N	N	NI	NI	NI	NI	NI	NI	NI	NI	31.44	861.69	31.53	861.60
MW-22	893.45	893.21	NI	NI	NI	NI	NI	NI	NI	NI	N	N	NI	NI	NI	NI	NI	NI	NI	NI	NI	NI	NM	NM
MW-23	887.88	887.53	NI	NI	NI	NI	NI	NI	NI	NI	N	N	NI	NI	NI	NI	NI	NI	NI	NI	NI	NI	NM	NM
PZ-1	932.34	932.97	39.95	891.87	40.38	891.44	40.14	893.83	39.21	894.76	40.00	893.97	39.82	894.15	NM	NM	40.24	893.73	NM	NM	NM	NM	NM	NM
PZ-2	934.27	933.02	DRY	DRY	DRY	DRY	DRY	DRY	DRY	DRY	DRY	DRY	DRY	DRY	NM	NM	DRY	DRY	NM	NM	NM	NM	NM	NM
PZ-3	NS	923.13	DRY	DRY	DRY	DRY	DRY	DRY	DRY	DRY	DRY	DRY	DRY	DRY	NM	NM	DRY	DRY	NM	NM	NM	NM	NM	NM

DATE	USGS Datum Elevations		3/12/2020		4/19/2021		10/10/2022		2/6/2023		5/31/2023		9/1/2023	
	WELL	Ground	Top of Casing	Depth to Water	Water Elev	Depth to Water	Water Elev	Depth to Water	Water Elev	Depth to Water	Water Elev	Depth to Water	Water Elev	Depth to Water
MW-1	941.74	941.34	NM	NM	NM	NM	NM	NM	NM	NM	NM	NM	NM	NM
MW-2	942.45	942.15	NM	NM	NM	NM	NM	NM	NM	NM	NM	NM	NM	NM
MW-3	937.87	937.48	21.19	916.29	21.98	915.50	23.45	914.03	23.20	914.28	22.05	915.43	22.79	914.69
MW-4	932.59	932.09	15.73	916.36	16.60	915.49	19.27	912.82	15.72	916.37	17.39	914.70	17.57	914.52
MW-5	934.53	934.19	17.89	916.30	18.72	915.47	20.22	913.97	20.02	914.17	18.86	915.33	19.58	914.61
MW-6	926.08	925.78	11.02	914.76	11.90	913.88	13.32	912.46	14.30	911.48	12.23	913.55	13.12	912.66
MW-7	936.12	935.90	18.53	917.37	19.43	916.47	20.94	914.96	20.76	915.14	19.54	916.36	20.03	915.87
MW-8	923.47	923.05	12.12	910.93	12.90	910.15	10.95	912.10	13.91	909.14	13.21	909.84	14.05	909.00
MW-9	919.63	919.44	4.93	914.51	5.97	913.47	7.60	911.84	7.49	911.95	6.30	913.14	7.20	912.24
MW-10	918.30	917.99	12.30	905.69	13.65	904.34	15.80	902.19	15.93	902.06	13.85	904.14	16.07	901.92
MW-11	935.89	935.69	19.01	916.68	19.98	915.71	21.42	914.27	21.23	914.46	20.09	915.60	20.76	914.93
MW-12	935.52	935.15	18.11	917.04	18.95	916.20	20.38	914.77	20.20	914.95	18.99	916.16	19.49	915.66
MW-13	922.85	922.36	9.94	912.42	10.54	911.82	11.35	911.01	11.26	911.10	10.39	911.97	11.21	911.15
MW-14	908.43	908.25	44.23	864.02	45.98	862.27	47.45	860.80	29.20	879.05	45.48	862.77	46.56	861.69
MW-15	903.79	903.57	39.77	863.80	41.48	862.09	42.88	860.69	43.00	860.57	40.95	862.62	42.05	861.52
MW-16	903.88	903.61	39.80	863.81	41.51	862.10	42.90	860.71	42.96	860.65	40.96	862.65	42.00	861.61
MW-17	894.74	894.24	30.77	863.47	32.42	861.82	33.75	860.49	33.96	860.28	31.88	862.36	33.02	861.22
MW-18	898.48	898.15	35.27	862.88	36.89	861.26	38.10	860.05	38.33	859.82	36.30	861.85	37.49	860.66
MW-19	895.38	894.84	31.62	863.22	33.28	861.56	34.58	860.26	35.76	859.08	32.68	862.16	33.89	860.95
MW-20	890.44	890.20	27.45	862.75	29.06	861.14	30.22	859.98	30.42	859.78	28.42	861.78	29.71	860.49
MW-21	893.52	893.13	30.78	862.35	32.36	860.77	33.45	859.68	33.72	859.41	31.68	861.45	33.00	860.13
MW-22	893.45	893.21	31.01	862.20	32.50	860.71	33.57	859.64	33.85	859.36	31.91	861.30	33.12	860.09
MW-23	887.88	887.53	25.08	862.45	26.81	860.72	27.89	859.64	28.11	859.42	25.98	861.55	27.41	860.12
MW-24	894.03	893.73	NI	NI	33.20	860.53	34.28	859.45	34.48	859.25	32.80	860.93	33.73	860.00
PZ-1	934.42	933.97	NM	NM	NM	NM	NM	NM	NM	NM	NM	NM	40.09	893.88
PZ-2	932.59	932.02	NM	NM	NM	NM	NM	NM	NM	NM	NM	NM	NM	NM
PZ-3	923.57	923.13	NM	NM	NM	NM	NM	NM	NM	NM	NM	NM	NM	NM

Notes: All USGS Datum Elevations in feet above mean sea level. NI - Not Installed
 All depth to water data in feet below top of casing. NM - Not Measured
 Wells resurveyed for the 6/1/16 sampling. NS - Not Surveyed
 DRY - Well was dry

Table 2. Summary of Groundwater Analytical Results - former Bask Dry Cleaners

Sample Parameter	Date	WDR NR 140 Standards		MW-1															
		PAL	ES	06/19/08	08/20/09	12/07/09	03/10/10	06/04/10	12/16/10	06/22/11	06/18/12	01/18/13	10/22/14	06/30/15	06/01/16	09/20/16	05/22/17	04/19/21	
cis-1,2-Dichloroethene	7.0	70	<0.83	<0.50	<0.50	<0.50	<0.50	<0.50	<0.50	<0.50	<0.12	<0.12	<0.12	<0.12	<0.41	<0.41	<0.41		
trans-1,2-Dichloroethene	20	100	<0.89	<0.50	<0.50	<0.50	<0.50	<0.50	<0.50	<0.25	<0.25	<0.25	<0.25	<0.35	<0.35	<0.35			
Tetrachloroethene	0.5	5.0	<0.45	<0.50	<0.50	<0.50	<0.50	<0.50	<0.50	<0.17	<0.17	<0.17	<0.17	<0.37	<0.37	<0.37			
Trichloroethene	0.5	5.0	<0.48	<0.20	<0.20	<0.20	<0.20	<0.20	<0.20	<0.19	<0.19	<0.19	<0.19	<0.16	<0.16	<0.16			
Vinyl Chloride	0.02	0.2	U	<0.20	<0.20	<0.20	<0.20	<0.20	<0.20	<0.10	<0.10	<0.10	<0.10	<0.20	<0.20	<0.20			
Dissolved Oxygen (mg/l)	NE	NE	U	4.99	3.76	4.55	5.01	5.27	6.04	5.18	5.13	4.38	6.15	6.97	5.55	5.61			
Oxidation-Reduction Potential	NE	NE	U	37.2	285.0	273.0	287.2	49.9	267.9	212.8	87.7	181.9	201.3	77.8	150.5	224.1			

Well Abandoned

Sample Parameter	Date	WDR NR 140 Standards		MW-3															
		PAL	ES	06/19/08	08/21/09	12/07/09	03/10/10	06/04/10	12/16/10	06/22/11	06/18/12	01/18/13	10/22/14	06/30/15	06/02/16	09/22/16	05/24/17	04/19/21	09/06/23
cis-1,2-Dichloroethene	7.0	70	<0.83	<0.50	<0.50	<0.50	<0.50	<0.50	<0.50	<0.12	<0.12	<0.12	<0.12	<0.41	<0.41	<0.41	<0.41	<0.41	<0.41
trans-1,2-Dichloroethene	20	100	<0.89	<0.50	<0.50	<0.50	<0.50	<0.50	<0.50	<0.25	<0.25	<0.25	<0.25	<0.35	<0.35	<0.35	<0.35	<0.35	<0.35
Tetrachloroethene	0.5	5.0	<0.45	<0.50	<0.50	<0.50	<0.50	<0.50	<0.50	0.77 J	1.6	<0.17	<0.17	<0.37	0.53	<0.37	<0.37	<0.37	<0.37
Trichloroethene	0.5	5.0	<0.48	<0.20	<0.20	<0.20	<0.20	<0.20	<0.20	<0.19	<0.19	<0.19	<0.19	<0.16	<0.16	<0.16	<0.16	<0.16	<0.16
Vinyl Chloride	0.02	0.2	U	<0.20	<0.20	<0.20	<0.20	<0.20	<0.20	<0.10	<0.10	<0.10	<0.10	<0.20	<0.20	<0.20	<0.20	<0.20	<0.20
Dissolved Oxygen (mg/l)	NE	NE	U	0.10	0.75	0.02	0.03	0.30	0.13	0.02	0.07	0.12	0.50	1.37	0.13	0.14	1.35	3.07	
Oxidation-Reduction Potential	NE	NE	U	-130.0	97.7	-162.5	54.2	-34.1	33.6	142.3	73.4	43.7	54.7	256.4	147.8	101.3	151.8	36.8	

Sample Parameter	Date	WDR NR 140 Standards		MW-4																		
		PAL	ES	06/19/08	08/21/09	12/07/09	03/10/10	06/04/10	12/16/10	06/22/11	06/21/12	01/18/13	10/23/14	06/30/15	06/01/16	09/23/16	05/25/17	04/19/21	10/11/22	02/10/23	06/02/23	09/06/23
cis-1,2-Dichloroethene	7.0	70	<0.83	<0.50	<0.50	<0.50	<0.50	<0.50	<0.50	<0.50	NS	NS	<0.12	NS	<0.41	<0.41	<0.41	<0.41	<0.41	<0.41	<0.41	<0.41
trans-1,2-Dichloroethene	20	100	<0.89	<0.50	<0.50	<0.50	<0.50	<0.50	<0.50	NS	NS	<0.25	NS	<0.35	<0.35	<0.35	<0.35	<0.35	<0.35	<0.35	<0.35	<0.35
Tetrachloroethene	0.5	5.0	217	<0.50	3.2	3.2	0.69 J	<0.50	1.8 J	NS	NS	1.4	NS	<0.37	0.88	<0.37	<0.37	<0.37	<0.41	<0.37	<0.37	<0.37
Trichloroethene	0.5	5.0	<0.48	<0.20	<0.20	<0.20	<0.20	<0.20	<0.20	NS	NS	<0.19	NS	<0.16	<0.16	<0.16	<0.16	<0.16	<0.32	<0.16	<0.16	<0.16
Vinyl Chloride	0.02	0.2	U	<0.20	<0.20	<0.20	<0.20	<0.20	<0.20	NS	NS	<0.10	NS	<0.20	<0.20	<0.20	<0.20	<0.20	<0.20	<0.17	<0.20	<0.20
Dissolved Oxygen (mg/l)	NE	NE	U	2.75	1.31	5.20	1.10	1.67	NM	NS	NS	1.66	NS	3.64	5.21	1.97	3.05	5.37	6.97	5.76	4.77	
Oxidation-Reduction Potential	NE	NE	U	-82.0	209.0	-1.7	143.5	-4.6	NM	NS	NS	78.4	NS	240.0	49.6	193.2	118.7	10.8	119.2	66.2	56.7	

Sample Parameter	Date	WDR NR 140 Standards		MW-5																				
		PAL	ES	06/19/08	08/21/09	12/07/09	03/18/10	06/04/10	12/17/10	06/22/11	06/21/12	01/18/13	10/22/14	07/01/15	06/02/16	09/23/16	05/24/17	07/18/18	03/13/20	04/19/21	10/11/22	02/08/23	06/01/23	09/06/23
cis-1,2-Dichloroethene	7.0	70	54.6	<4.0	3.6 J	170	17	1,500	1,300	470	370	100	39	7.2	7.2	49	14	0.66	1.9	2.5	<0.41	6.5	5.0	0.70 J
trans-1,2-Dichloroethene	20	100	<17.8	<4.0	<2.0	<0.20	<1.0	15	18 J	5.0	3.2	2.1	2.8	3.9	1.6	5.3	4.1	6.7	3.8	1.9	1.7	1.6	3.0	
Tetrachloroethene	0.5	5.0	1,840	180	180	660	96	200	46	2.3	3.6	1.3	0.64	8.4	5.3	<0.37	<0.37	<0.37	0.99 J	<0.41	<0.37	<0.37	<0.37	
Trichloroethene	0.5	5.0	16.7	<1.6	2.9	49	6.6	38	60	1.1	1.7	0.26	4.3	1.4	6.2	2.4	4.7	0.73	1.2	2.0	2.4	3.7	1.5	
Vinyl Chloride	0.02	0.2	U	<1.6	<0.80	<0.40	<0.40	12	9.0 J	7.3	2.5	0.89	8.9	1.1	1.2	8.5	3.4	<0.20	<0.20	0.91 J	<0.20	<0.20	0.33 J	
Dissolved Oxygen (mg/l)	NE	NE	U	3.18	0.66	NM	5.03	1.77	0.15	0.43	0.16	0.16	0.73	0.86	0.09	0.18	0.56	2.33	1.94	0.52	5.29	2.67	1.67	
Oxidation-Reduction Potential	NE	NE	U	30.0	-158.0	NM	-27.8	-13.7	-116.1	-71.4	-50.7	-56.9	-73.6	-96.7	-88.2	-66.1	-76.8	-86.2	-60.8	-246.1	72.6	-137.3	-106.9	

Sample Parameter	Date	WDR NR 140 Standards		MW-6																			
		PAL	ES	06/19/08	08/21/09	12/07/09	03/10/10	06/04/10	12/17/10	06/22/11	06/21/12	01/18/13	10/22/14	06/30/15	06/03/16	09/22/16	05/25/17	07/19/18	03/13/20	04/20/21	10/11/22	02/08/23	06/02/23
cis-1,2-Dichloroethene	7.0	70	44.5	NS	21 J	26 J	26 J	3,400	1,900	240	82	190	35	19	76	61	210	1,400	550	45.4	26	17	130
trans-1,2-Dichloroethene	20	100	<4.4	NS	<4.0	<4.0	37	50	11	3.9	9.2	1.6	1.0	3.5	2.4	9.7	20	9.0	2.7	<0.35	0.92 J	3.1	
Tetrachloroethene	0.5	5.0	653	NS	1,700	1,400	500	430	400	320	260	220	140	70	96	99	230	430	580	195	170	150	180
Trichloroethene	0.5	5.0	8.9	NS	8.4 J	690	640	450	230	160	57	69	22	6.5	13	17	44	69	69	13.6	9.4	13	25
Vinyl Chloride	0.02	0.2	U	NS	<8.0	<6.4	<3.2	<2.0	<4.0	<0.10	<0.10	<0.10	<0.10	<0.20	<0.20	<0.20	<0.20	0.64	23	9.8	<0.17	<0.20	<0.20
Dissolved Oxygen (mg/l)	NE	NE	U	NS	2.43	0.64	1.20	0.33	0.46	0.77	3.74	0.08	0.94	1.93	0.24	0.40	1.24	2.16	2.24	5.54	7.63	5.28	5.73
Oxidation-Reduction Potential	NE	NE	U	NS	-46.7	-171.2	-117.8	-30.7	13.1	-18.1	75.2	92.2	78.5	100.3	81.8	110.8	79.6	60.7	145.4	84.7	93.6	64.6	39.6

Sample Parameter	Date	WDR NR 140 Standards		MW-7																				
		PAL	ES	06/19/08	08/21/09	12/07/09	03/10/10	06/04/10	12/17/10	06/22/11	06/21/12	01/18/13	10/22/14	06/30/15	06/02/16	09/23/16	05/24/17	07/18/18	03/13/20	04/19/21	10/11/22	02/07/23	06/01/23	09/06/23
cis-1,2-Dichloroethene	7.0	70	2.5	0.86 J	<0.50	<0.50	<0.50	0.62 J	<0.50	4.3	3.4	1.3	<0.12	<0.41	0.84	<0.41	<0.41	<0.41	<0.41	<0.41	4.10	<0.41	0.81 J	0.43 J
trans-1,2-Dichloroethene	20	100	<0.89	<0.50	<0.50	<0.50	<0.50	<0.50	<0.50	<0.25	<0.25	<0.25	<0.25	<0.35	<0.35	<0.35	<0.35	<0.35	<0.35	<0.35	<0.35	<0.35	<0.35	<0.35
Tetrachloroethene	0.5	5.0	48.5	22	30	35	30	34	29	1.7	1.2	<0.17	<0.17	1.5	2.1	9.0	<0.37	16	6.0	<0.41	<0.37	0.53 J	<0.37	
Trichloroethene	0.5	5.0	4.7	3.2	1.9	1.4	2.0	11	2.8	18	10	6.0	2.3	2.2	7.8	4.8	2.4	1.6	3.2					

Table 2 (cont'd). Summary of Groundwater Analytical Results - former Bask Dry Cleaners

Sample Parameter Date	WDNR NR 140 Standards		MW-19								MW-20					MW-21					
	PAL	ES	05/23/17	09/29/17	07/18/18	09/21/18	03/13/20	04/21/21	09/05/23	07/18/18	09/21/18	12/19/18	03/19/19	03/13/20	04/22/21	09/05/23	12/19/18	03/19/19	03/12/20	04/21/21	09/05/23
cis-1,2-Dichloroethene	7.0	70	12	15	16	15	12	9.5	8.6	7.8	6.3	3.7	4.5	3.4	5.8	5.9	0.69	<0.41	<0.41	<0.41	<0.41
trans-1,2-Dichloroethene	20	100	<0.35	<0.35	<0.35	<0.35	<0.35	<0.35	<0.35	<0.35	<0.35	<0.35	<0.35	<0.35	<0.35	<0.35	<0.35	<0.35	<0.35	<0.35	<0.35
Tetrachloroethene	0.5	5.0	48	55	82	80	88	87	20	39	38	37	36	38	33	22	0.72	<0.37	<0.37	<0.37	<0.37
Trichloroethene	0.5	5.0	2.0	2.6	5.2	4.9	3.8	3.0	1.6	1.9	2.0	1.8	1.8	1.3	1.7	0.86	0.5	10	0.61	<0.16	<0.16
Vinyl Chloride	0.02	0.2	<0.20	<0.20	<0.20	<0.20	<0.20	<0.20	<0.20	<0.20	<0.20	<0.20	<0.20	<0.20	<0.20	<0.20	<0.20	<0.20	<0.20	<0.20	<0.20
Dissolved Oxygen (mg/l)	NE	NE	7.75	6.52	6.82	6.94	3.54	8.36	8.36	7.80	7.75	6.71	6.53	3.99	8.01	8.39	0.92	6.94	1.85	6.49	7.41
Oxidation-Reduction Potential	NE	NE	186.6	196.5	50.0	98.8	146.3	156.8	121.7	9.8	106.2	78.9	108.8	104.0	147.8	125.2	-197.8	120.1	-60.4	168.2	129.0

Sample Parameter Date	WDNR NR 140 Standards		MW-22				MW-23				MW-24			
	PAL	ES	03/12/20	06/10/20	04/21/21	09/05/23	03/12/20	06/10/20	04/22/21	09/05/23	12/02/20	04/22/21	09/05/23	
cis-1,2-Dichloroethene	7.0	70	1.9	2.3	3.0	<0.41	<0.41	<0.27	<0.41	<0.41	<0.41	<0.41	<0.41	
trans-1,2-Dichloroethene	20	100	<0.35	<0.46	<0.35	<0.35	<0.35	<0.46	<0.35	<0.35	<0.35	<0.35	<0.35	
Tetrachloroethene	0.5	5.0	7.3	7.4	15	4.0	<0.37	<0.33	<0.37	<0.37	<0.37	<0.37	<0.37	
Trichloroethene	0.5	5.0	0.31	0.49 J	1.3	<0.16	<0.16	<0.26	<0.16	<0.16	<0.16	<0.16	<0.16	
Vinyl Chloride	0.02	0.2	<0.20	<0.17	<0.20	<0.20	<0.20	<0.17	<0.20	<0.20	<0.20	<0.20	<0.20	
Dissolved Oxygen (mg/l)	NE	NE	2.17	5.31	6.62	5.29	1.50	6.10	3.33	4.20	1.31	0.56	7.13	
Oxidation-Reduction Potential	NE	NE	64.8	74.6	180.2	135.2	-518.8	63.0	157.2	103.6	-22.2	-94.4	116.0	

Sample Parameter Date	WDNR NR 140 Standards		PZ-1															
	PAL	ES	06/19/08	08/21/09	12/07/09	03/10/10	06/04/10	12/16/10	06/22/11	06/21/12	01/18/13	10/22/14	07/01/15	06/01/16	09/23/16	05/24/17	09/06/23	
cis-1,2-Dichloroethene	7.0	70	0.97	<0.50	<0.50	<0.50	<0.50	<0.50	<0.50	<0.12	<0.12	<0.12	<0.12	<0.41	<0.41	<0.41	<0.41	
trans-1,2-Dichloroethene	20	100	<0.89	<0.50	<0.50	<0.50	<0.50	<0.50	<0.50	<0.25	<0.25	<0.25	<0.25	<0.35	<0.35	<0.35	<0.35	
Tetrachloroethene	0.5	5.0	0.54	<0.50	<0.50	<0.50	<0.50	1.4 J	<0.50	<0.17	1.6	<0.17	<0.17	<0.37	<0.37	<0.37	<0.37	
Trichloroethene	0.5	5.0	<0.48	<0.20	<0.20	<0.20	<0.20	<0.20	<0.20	<0.19	<0.19	<0.19	<0.19	<0.16	<0.16	<0.16	<0.16	
Vinyl Chloride	0.02	0.2	U	<0.20	<0.20	<0.20	<0.20	<0.20	<0.20	<0.10	<0.10	<0.10	<0.10	<0.20	<0.20	<0.20	<0.20	
Dissolved Oxygen (mg/l)	NE	NE	U	4.31	1.82	5.64	1.45	0.71	1.12	4.33	4.64	2.80	2.43	4.68	4.14	2.21	3.66	
Oxidation-Reduction Potential	NE	NE	U	-69.9	183	-76.8	71.8	-11.3	5.83	101	43.4	117.2	54.0	260.4	78.5	91.6	40.7	

Notes: All values are in µg/l unless otherwise noted.
 PAL - Preventative Action Limit
 ES - Enforcement Standard
 NE - Standard Not Established

NS - Not Sampled
 NM - Not Measured
 U - Pre Injection Data (unknown)
 Pre Polishing Injection

BOLD - Result exceeds the PAL
BOLD - Result exceeds the ES

ET - Endpoint timeout caused by matrix interference.
 J - Estimated value. Result between method detection limit and limit of quantification.
 M - The MS and/or MSD were outside control limits.
 pH - The pH was outside range and the sample was adjusted.

ATTACHMENT 1
ANALYTICAL DATA PACKAGE

ANALYTICAL REPORT

PREPARED FOR

Attn: Mr. Rich Gnat
KPRG and Associates, Inc.
14665 West Lisbon Road,
Suite 1A
Brookfield, Wisconsin 53005

Generated 9/15/2023 1:14:38 PM

JOB DESCRIPTION

Former Bask Dry Cleaners #10009

JOB NUMBER

500-239224-1

Eurofins Chicago

Job Notes

The test results in this report meet all NELAP requirements for parameters for which accreditation is required or available. Any exceptions to the NELAP requirements are noted in this report. Pursuant to NELAP, this report may not be reproduced, except in full, without the written approval of the laboratory. This report is confidential and is intended for the sole use of Eurofins Environment Testing North Central, LLC and its client. All questions regarding this report should be directed to the Eurofins Environment Testing North Central, LLC Project Manager who has signed this report.

Results relate only to the items tested and the sample(s) as received by the laboratory. The results, detection limits (LOD) and Quantitation Limits (LOQ) have been adjusted for sample dilutions and/or solids content.

The test results in this report relate only to the samples as received by the laboratory and will meet all requirements of the methodology, with any exceptions noted. This report shall not be reproduced except in full, without the express written approval of the laboratory. All questions should be directed to the Eurofins Chicago Project Manager.

Authorization



Generated
9/15/2023 1:14:38 PM

Authorized for release by
Robin Kintz, Project Manager II
Robin.Kintz@et.eurofinsus.com
Designee for
Diana Mockler, Project Manager I
Diana.Mockler@et.eurofinsus.com
(219)252-7570



Table of Contents

Cover Page	1
Table of Contents	3
Case Narrative	4
Method Summary	5
Sample Summary	6
Client Sample Results	7
Definitions	32
QC Association	33
Surrogate Summary	34
QC Sample Results	35
Chain of Custody	38
Receipt Checklists	41
Chronicle	42
Certification Summary	46

Case Narrative

Client: KPRG and Associates, Inc.
Project/Site: Former Bask Dry Cleaners #10009

Job ID: 500-239224-1

Job ID: 500-239224-1

Laboratory: Eurofins Chicago

Narrative

**Job Narrative
500-239224-1**

Receipt

The samples were received on 9/8/2023 9:45 AM. Unless otherwise noted below, the samples arrived in good condition, and where required, properly preserved and on ice. The temperature of the cooler at receipt was 2.0° C.

GC/MS VOA

Method 8260D: The continuing calibration verification (CCV) associated with batch 500-732186 recovered above the upper control limit for Chloroethane. The samples associated with this CCV were non-detects for the affected analytes; therefore, the data have been reported.

No additional analytical or quality issues were noted, other than those described above or in the Definitions/Glossary page.

- 1
- 2
- 3
- 4
- 5
- 6
- 7
- 8
- 9
- 10
- 11
- 12
- 13
- 14

Method Summary

Client: KPRG and Associates, Inc.
Project/Site: Former Bask Dry Cleaners #10009

Job ID: 500-239224-1

Method	Method Description	Protocol	Laboratory
8260D	Volatile Organic Compounds by GC/MS	SW846	EET CHI
5030B	Purge and Trap	SW846	EET CHI

Protocol References:

SW846 = "Test Methods For Evaluating Solid Waste, Physical/Chemical Methods", Third Edition, November 1986 And Its Updates.

Laboratory References:

EET CHI = Eurofins Chicago, 2417 Bond Street, University Park, IL 60484, TEL (708)534-5200



Sample Summary

Client: KPRG and Associates, Inc.
Project/Site: Former Bask Dry Cleaners #10009

Job ID: 500-239224-1

Lab Sample ID	Client Sample ID	Matrix	Collected	Received
500-239224-1	MW-21	Water	09/05/23 09:37	09/08/23 09:45
500-239224-2	MW-23	Water	09/05/23 10:09	09/08/23 09:45
500-239224-3	MW-22	Water	09/05/23 10:45	09/08/23 09:45
500-239224-4	MW-20	Water	09/05/23 11:21	09/08/23 09:45
500-239224-5	MW-19	Water	09/05/23 11:54	09/08/23 09:45
500-239224-6	MW-15	Water	09/05/23 12:31	09/08/23 09:45
500-239224-7	MW-17	Water	09/05/23 13:13	09/08/23 09:45
500-239224-8	MW-18	Water	09/05/23 13:51	09/08/23 09:45
500-239224-9	MW-24	Water	09/05/23 14:22	09/08/23 09:45
500-239224-10	MW-14	Water	09/05/23 14:57	09/08/23 09:45
500-239224-11	MW-10	Water	09/05/23 15:42	09/08/23 09:45
500-239224-12	MW-13	Water	09/06/23 09:29	09/08/23 09:45
500-239224-13	MW-8	Water	09/06/23 10:03	09/08/23 09:45
500-239224-14	MW-3	Water	09/06/23 10:38	09/08/23 09:45
500-239224-15	MW-5	Water	09/06/23 11:15	09/08/23 09:45
500-239224-16	MW-7	Water	09/06/23 11:49	09/08/23 09:45
500-239224-17	MW-12	Water	09/06/23 12:35	09/08/23 09:45
500-239224-18	MW-11	Water	09/06/23 13:04	09/08/23 09:45
500-239224-19	MW-9	Water	09/06/23 13:39	09/08/23 09:45
500-239224-20	MW-16	Water	09/06/23 14:13	09/08/23 09:45
500-239224-21	PZ-1	Water	09/06/23 14:56	09/08/23 09:45
500-239224-22	MW-4	Water	09/06/23 15:12	09/08/23 09:45
500-239224-23	MW-6	Water	09/06/23 15:30	09/08/23 09:45
500-239224-24	Duplicate 1	Water	09/06/23 00:00	09/08/23 09:45
500-239224-25	Trip Blank	Water	09/05/23 00:00	09/08/23 09:45

Client Sample Results

Client: KPRG and Associates, Inc.
 Project/Site: Former Bask Dry Cleaners #10009

Job ID: 500-239224-1

Client Sample ID: MW-21

Lab Sample ID: 500-239224-1

Date Collected: 09/05/23 09:37

Matrix: Water

Date Received: 09/08/23 09:45

Method: SW846 8260D - Volatile Organic Compounds by GC/MS

Analyte	Result	Qualifier	RL	MDL	Unit	D	Prepared	Analyzed	Dil Fac
Carbon tetrachloride	<0.38		1.0	0.38	ug/L			09/14/23 01:22	1
Chloroethane	<0.51		1.0	0.51	ug/L			09/14/23 01:22	1
Chloroform	<0.37		2.0	0.37	ug/L			09/14/23 01:22	1
Chloromethane	<0.32		5.0	0.32	ug/L			09/14/23 01:22	1
cis-1,2-Dichloroethene	<0.41		1.0	0.41	ug/L			09/14/23 01:22	1
1,1-Dichloroethane	<0.41		1.0	0.41	ug/L			09/14/23 01:22	1
1,2-Dichloroethane	<0.39		1.0	0.39	ug/L			09/14/23 01:22	1
1,1-Dichloroethene	<0.39		1.0	0.39	ug/L			09/14/23 01:22	1
Methylene Chloride	<1.6		5.0	1.6	ug/L			09/14/23 01:22	1
Tetrachloroethene	<0.37		1.0	0.37	ug/L			09/14/23 01:22	1
trans-1,2-Dichloroethene	<0.35		1.0	0.35	ug/L			09/14/23 01:22	1
1,1,1-Trichloroethane	<0.38		1.0	0.38	ug/L			09/14/23 01:22	1
1,1,2-Trichloroethane	<0.35		1.0	0.35	ug/L			09/14/23 01:22	1
Trichloroethene	<0.16		0.50	0.16	ug/L			09/14/23 01:22	1
Vinyl chloride	<0.20		1.0	0.20	ug/L			09/14/23 01:22	1
Surrogate	%Recovery	Qualifier	Limits				Prepared	Analyzed	Dil Fac
4-Bromofluorobenzene (Surr)	110		72 - 124					09/14/23 01:22	1
Dibromofluoromethane	100		75 - 120					09/14/23 01:22	1
1,2-Dichloroethane-d4 (Surr)	92		75 - 126					09/14/23 01:22	1
Toluene-d8 (Surr)	92		75 - 120					09/14/23 01:22	1

Client Sample Results

Client: KPRG and Associates, Inc.
 Project/Site: Former Bask Dry Cleaners #10009

Job ID: 500-239224-1

Client Sample ID: MW-23

Lab Sample ID: 500-239224-2

Date Collected: 09/05/23 10:09

Matrix: Water

Date Received: 09/08/23 09:45

Method: SW846 8260D - Volatile Organic Compounds by GC/MS

Analyte	Result	Qualifier	RL	MDL	Unit	D	Prepared	Analyzed	Dil Fac
Carbon tetrachloride	<0.38		1.0	0.38	ug/L			09/14/23 01:46	1
Chloroethane	<0.51		1.0	0.51	ug/L			09/14/23 01:46	1
Chloroform	<0.37		2.0	0.37	ug/L			09/14/23 01:46	1
Chloromethane	<0.32		5.0	0.32	ug/L			09/14/23 01:46	1
cis-1,2-Dichloroethene	<0.41		1.0	0.41	ug/L			09/14/23 01:46	1
1,1-Dichloroethane	<0.41		1.0	0.41	ug/L			09/14/23 01:46	1
1,2-Dichloroethane	<0.39		1.0	0.39	ug/L			09/14/23 01:46	1
1,1-Dichloroethene	<0.39		1.0	0.39	ug/L			09/14/23 01:46	1
Methylene Chloride	<1.6		5.0	1.6	ug/L			09/14/23 01:46	1
Tetrachloroethene	<0.37		1.0	0.37	ug/L			09/14/23 01:46	1
trans-1,2-Dichloroethene	<0.35		1.0	0.35	ug/L			09/14/23 01:46	1
1,1,1-Trichloroethane	<0.38		1.0	0.38	ug/L			09/14/23 01:46	1
1,1,2-Trichloroethane	<0.35		1.0	0.35	ug/L			09/14/23 01:46	1
Trichloroethene	<0.16		0.50	0.16	ug/L			09/14/23 01:46	1
Vinyl chloride	<0.20		1.0	0.20	ug/L			09/14/23 01:46	1
Surrogate	%Recovery	Qualifier	Limits				Prepared	Analyzed	Dil Fac
4-Bromofluorobenzene (Surr)	112		72 - 124					09/14/23 01:46	1
Dibromofluoromethane	101		75 - 120					09/14/23 01:46	1
1,2-Dichloroethane-d4 (Surr)	97		75 - 126					09/14/23 01:46	1
Toluene-d8 (Surr)	93		75 - 120					09/14/23 01:46	1

Client Sample Results

Client: KPRG and Associates, Inc.
 Project/Site: Former Bask Dry Cleaners #10009

Job ID: 500-239224-1

Client Sample ID: MW-22

Lab Sample ID: 500-239224-3

Date Collected: 09/05/23 10:45

Matrix: Water

Date Received: 09/08/23 09:45

Method: SW846 8260D - Volatile Organic Compounds by GC/MS

Analyte	Result	Qualifier	RL	MDL	Unit	D	Prepared	Analyzed	Dil Fac
Carbon tetrachloride	<0.38		1.0	0.38	ug/L			09/14/23 02:10	1
Chloroethane	<0.51		1.0	0.51	ug/L			09/14/23 02:10	1
Chloroform	<0.37		2.0	0.37	ug/L			09/14/23 02:10	1
Chloromethane	<0.32		5.0	0.32	ug/L			09/14/23 02:10	1
cis-1,2-Dichloroethene	<0.41		1.0	0.41	ug/L			09/14/23 02:10	1
1,1-Dichloroethane	<0.41		1.0	0.41	ug/L			09/14/23 02:10	1
1,2-Dichloroethane	<0.39		1.0	0.39	ug/L			09/14/23 02:10	1
1,1-Dichloroethene	<0.39		1.0	0.39	ug/L			09/14/23 02:10	1
Methylene Chloride	<1.6		5.0	1.6	ug/L			09/14/23 02:10	1
Tetrachloroethene	4.0		1.0	0.37	ug/L			09/14/23 02:10	1
trans-1,2-Dichloroethene	<0.35		1.0	0.35	ug/L			09/14/23 02:10	1
1,1,1-Trichloroethane	<0.38		1.0	0.38	ug/L			09/14/23 02:10	1
1,1,2-Trichloroethane	<0.35		1.0	0.35	ug/L			09/14/23 02:10	1
Trichloroethene	<0.16		0.50	0.16	ug/L			09/14/23 02:10	1
Vinyl chloride	<0.20		1.0	0.20	ug/L			09/14/23 02:10	1
Surrogate	%Recovery	Qualifier	Limits				Prepared	Analyzed	Dil Fac
4-Bromofluorobenzene (Surr)	111		72 - 124					09/14/23 02:10	1
Dibromofluoromethane	101		75 - 120					09/14/23 02:10	1
1,2-Dichloroethane-d4 (Surr)	97		75 - 126					09/14/23 02:10	1
Toluene-d8 (Surr)	91		75 - 120					09/14/23 02:10	1

Client Sample Results

Client: KPRG and Associates, Inc.
 Project/Site: Former Bask Dry Cleaners #10009

Job ID: 500-239224-1

Client Sample ID: MW-20

Lab Sample ID: 500-239224-4

Date Collected: 09/05/23 11:21

Matrix: Water

Date Received: 09/08/23 09:45

Method: SW846 8260D - Volatile Organic Compounds by GC/MS

Analyte	Result	Qualifier	RL	MDL	Unit	D	Prepared	Analyzed	Dil Fac
Carbon tetrachloride	<0.38		1.0	0.38	ug/L			09/14/23 02:34	1
Chloroethane	<0.51		1.0	0.51	ug/L			09/14/23 02:34	1
Chloroform	<0.37		2.0	0.37	ug/L			09/14/23 02:34	1
Chloromethane	<0.32		5.0	0.32	ug/L			09/14/23 02:34	1
cis-1,2-Dichloroethene	5.9		1.0	0.41	ug/L			09/14/23 02:34	1
1,1-Dichloroethane	<0.41		1.0	0.41	ug/L			09/14/23 02:34	1
1,2-Dichloroethane	<0.39		1.0	0.39	ug/L			09/14/23 02:34	1
1,1-Dichloroethene	<0.39		1.0	0.39	ug/L			09/14/23 02:34	1
Methylene Chloride	<1.6		5.0	1.6	ug/L			09/14/23 02:34	1
Tetrachloroethene	22		1.0	0.37	ug/L			09/14/23 02:34	1
trans-1,2-Dichloroethene	<0.35		1.0	0.35	ug/L			09/14/23 02:34	1
1,1,1-Trichloroethane	<0.38		1.0	0.38	ug/L			09/14/23 02:34	1
1,1,2-Trichloroethane	<0.35		1.0	0.35	ug/L			09/14/23 02:34	1
Trichloroethene	0.86		0.50	0.16	ug/L			09/14/23 02:34	1
Vinyl chloride	<0.20		1.0	0.20	ug/L			09/14/23 02:34	1
Surrogate	%Recovery	Qualifier	Limits				Prepared	Analyzed	Dil Fac
4-Bromofluorobenzene (Surr)	114		72 - 124					09/14/23 02:34	1
Dibromofluoromethane	101		75 - 120					09/14/23 02:34	1
1,2-Dichloroethane-d4 (Surr)	97		75 - 126					09/14/23 02:34	1
Toluene-d8 (Surr)	92		75 - 120					09/14/23 02:34	1

Client Sample Results

Client: KPRG and Associates, Inc.
 Project/Site: Former Bask Dry Cleaners #10009

Job ID: 500-239224-1

Client Sample ID: MW-19
Date Collected: 09/05/23 11:54
Date Received: 09/08/23 09:45

Lab Sample ID: 500-239224-5
Matrix: Water

Method: SW846 8260D - Volatile Organic Compounds by GC/MS

Analyte	Result	Qualifier	RL	MDL	Unit	D	Prepared	Analyzed	Dil Fac
Carbon tetrachloride	<0.38		1.0	0.38	ug/L			09/14/23 02:59	1
Chloroethane	<0.51		1.0	0.51	ug/L			09/14/23 02:59	1
Chloroform	<0.37		2.0	0.37	ug/L			09/14/23 02:59	1
Chloromethane	<0.32		5.0	0.32	ug/L			09/14/23 02:59	1
cis-1,2-Dichloroethene	8.6		1.0	0.41	ug/L			09/14/23 02:59	1
1,1-Dichloroethane	<0.41		1.0	0.41	ug/L			09/14/23 02:59	1
1,2-Dichloroethane	<0.39		1.0	0.39	ug/L			09/14/23 02:59	1
1,1-Dichloroethene	<0.39		1.0	0.39	ug/L			09/14/23 02:59	1
Methylene Chloride	<1.6		5.0	1.6	ug/L			09/14/23 02:59	1
Tetrachloroethene	20		1.0	0.37	ug/L			09/14/23 02:59	1
trans-1,2-Dichloroethene	<0.35		1.0	0.35	ug/L			09/14/23 02:59	1
1,1,1-Trichloroethane	<0.38		1.0	0.38	ug/L			09/14/23 02:59	1
1,1,2-Trichloroethane	<0.35		1.0	0.35	ug/L			09/14/23 02:59	1
Trichloroethene	1.6		0.50	0.16	ug/L			09/14/23 02:59	1
Vinyl chloride	<0.20		1.0	0.20	ug/L			09/14/23 02:59	1
Surrogate	%Recovery	Qualifier	Limits				Prepared	Analyzed	Dil Fac
4-Bromofluorobenzene (Surr)	113		72 - 124					09/14/23 02:59	1
Dibromofluoromethane	101		75 - 120					09/14/23 02:59	1
1,2-Dichloroethane-d4 (Surr)	97		75 - 126					09/14/23 02:59	1
Toluene-d8 (Surr)	92		75 - 120					09/14/23 02:59	1

Client Sample Results

Client: KPRG and Associates, Inc.
 Project/Site: Former Bask Dry Cleaners #10009

Job ID: 500-239224-1

Client Sample ID: MW-15

Lab Sample ID: 500-239224-6

Date Collected: 09/05/23 12:31

Matrix: Water

Date Received: 09/08/23 09:45

Method: SW846 8260D - Volatile Organic Compounds by GC/MS

Analyte	Result	Qualifier	RL	MDL	Unit	D	Prepared	Analyzed	Dil Fac
Carbon tetrachloride	<0.38		1.0	0.38	ug/L			09/14/23 03:23	1
Chloroethane	<0.51		1.0	0.51	ug/L			09/14/23 03:23	1
Chloroform	<0.37		2.0	0.37	ug/L			09/14/23 03:23	1
Chloromethane	<0.32		5.0	0.32	ug/L			09/14/23 03:23	1
cis-1,2-Dichloroethene	3.9		1.0	0.41	ug/L			09/14/23 03:23	1
1,1-Dichloroethane	<0.41		1.0	0.41	ug/L			09/14/23 03:23	1
1,2-Dichloroethane	<0.39		1.0	0.39	ug/L			09/14/23 03:23	1
1,1-Dichloroethene	<0.39		1.0	0.39	ug/L			09/14/23 03:23	1
Methylene Chloride	<1.6		5.0	1.6	ug/L			09/14/23 03:23	1
Tetrachloroethene	50		1.0	0.37	ug/L			09/14/23 03:23	1
trans-1,2-Dichloroethene	<0.35		1.0	0.35	ug/L			09/14/23 03:23	1
1,1,1-Trichloroethane	<0.38		1.0	0.38	ug/L			09/14/23 03:23	1
1,1,2-Trichloroethane	<0.35		1.0	0.35	ug/L			09/14/23 03:23	1
Trichloroethene	3.2		0.50	0.16	ug/L			09/14/23 03:23	1
Vinyl chloride	<0.20		1.0	0.20	ug/L			09/14/23 03:23	1

Surrogate	%Recovery	Qualifier	Limits	Prepared	Analyzed	Dil Fac
4-Bromofluorobenzene (Surr)	115		72 - 124		09/14/23 03:23	1
Dibromofluoromethane	100		75 - 120		09/14/23 03:23	1
1,2-Dichloroethane-d4 (Surr)	97		75 - 126		09/14/23 03:23	1
Toluene-d8 (Surr)	92		75 - 120		09/14/23 03:23	1

Client Sample Results

Client: KPRG and Associates, Inc.
 Project/Site: Former Bask Dry Cleaners #10009

Job ID: 500-239224-1

Client Sample ID: MW-17

Lab Sample ID: 500-239224-7

Date Collected: 09/05/23 13:13

Matrix: Water

Date Received: 09/08/23 09:45

Method: SW846 8260D - Volatile Organic Compounds by GC/MS

Analyte	Result	Qualifier	RL	MDL	Unit	D	Prepared	Analyzed	Dil Fac
Carbon tetrachloride	<0.38		1.0	0.38	ug/L			09/14/23 11:53	1
Chloroethane	<0.51		1.0	0.51	ug/L			09/14/23 11:53	1
Chloroform	<0.37		2.0	0.37	ug/L			09/14/23 11:53	1
Chloromethane	<0.32		5.0	0.32	ug/L			09/14/23 11:53	1
cis-1,2-Dichloroethene	<0.41		1.0	0.41	ug/L			09/14/23 11:53	1
1,1-Dichloroethane	<0.41		1.0	0.41	ug/L			09/14/23 11:53	1
1,2-Dichloroethane	<0.39		1.0	0.39	ug/L			09/14/23 11:53	1
1,1-Dichloroethene	<0.39		1.0	0.39	ug/L			09/14/23 11:53	1
Methylene Chloride	<1.6		5.0	1.6	ug/L			09/14/23 11:53	1
Tetrachloroethene	<0.37		1.0	0.37	ug/L			09/14/23 11:53	1
trans-1,2-Dichloroethene	<0.35		1.0	0.35	ug/L			09/14/23 11:53	1
1,1,1-Trichloroethane	<0.38		1.0	0.38	ug/L			09/14/23 11:53	1
1,1,2-Trichloroethane	<0.35		1.0	0.35	ug/L			09/14/23 11:53	1
Trichloroethene	<0.16		0.50	0.16	ug/L			09/14/23 11:53	1
Vinyl chloride	<0.20		1.0	0.20	ug/L			09/14/23 11:53	1
Surrogate	%Recovery	Qualifier	Limits				Prepared	Analyzed	Dil Fac
4-Bromofluorobenzene (Surr)	111		72 - 124					09/14/23 11:53	1
Dibromofluoromethane	104		75 - 120					09/14/23 11:53	1
1,2-Dichloroethane-d4 (Surr)	99		75 - 126					09/14/23 11:53	1
Toluene-d8 (Surr)	90		75 - 120					09/14/23 11:53	1

Client Sample Results

Client: KPRG and Associates, Inc.
 Project/Site: Former Bask Dry Cleaners #10009

Job ID: 500-239224-1

Client Sample ID: MW-18

Lab Sample ID: 500-239224-8

Date Collected: 09/05/23 13:51

Matrix: Water

Date Received: 09/08/23 09:45

Method: SW846 8260D - Volatile Organic Compounds by GC/MS

Analyte	Result	Qualifier	RL	MDL	Unit	D	Prepared	Analyzed	Dil Fac
Carbon tetrachloride	<0.38		1.0	0.38	ug/L			09/14/23 12:17	1
Chloroethane	<0.51		1.0	0.51	ug/L			09/14/23 12:17	1
Chloroform	<0.37		2.0	0.37	ug/L			09/14/23 12:17	1
Chloromethane	<0.32		5.0	0.32	ug/L			09/14/23 12:17	1
cis-1,2-Dichloroethene	<0.41		1.0	0.41	ug/L			09/14/23 12:17	1
1,1-Dichloroethane	<0.41		1.0	0.41	ug/L			09/14/23 12:17	1
1,2-Dichloroethane	<0.39		1.0	0.39	ug/L			09/14/23 12:17	1
1,1-Dichloroethene	<0.39		1.0	0.39	ug/L			09/14/23 12:17	1
Methylene Chloride	<1.6		5.0	1.6	ug/L			09/14/23 12:17	1
Tetrachloroethene	<0.37		1.0	0.37	ug/L			09/14/23 12:17	1
trans-1,2-Dichloroethene	<0.35		1.0	0.35	ug/L			09/14/23 12:17	1
1,1,1-Trichloroethane	<0.38		1.0	0.38	ug/L			09/14/23 12:17	1
1,1,2-Trichloroethane	<0.35		1.0	0.35	ug/L			09/14/23 12:17	1
Trichloroethene	<0.16		0.50	0.16	ug/L			09/14/23 12:17	1
Vinyl chloride	<0.20		1.0	0.20	ug/L			09/14/23 12:17	1
Surrogate	%Recovery	Qualifier	Limits				Prepared	Analyzed	Dil Fac
4-Bromofluorobenzene (Surr)	110		72 - 124					09/14/23 12:17	1
Dibromofluoromethane	101		75 - 120					09/14/23 12:17	1
1,2-Dichloroethane-d4 (Surr)	98		75 - 126					09/14/23 12:17	1
Toluene-d8 (Surr)	92		75 - 120					09/14/23 12:17	1

Client Sample Results

Client: KPRG and Associates, Inc.
 Project/Site: Former Bask Dry Cleaners #10009

Job ID: 500-239224-1

Client Sample ID: MW-24

Lab Sample ID: 500-239224-9

Date Collected: 09/05/23 14:22

Matrix: Water

Date Received: 09/08/23 09:45

Method: SW846 8260D - Volatile Organic Compounds by GC/MS

Analyte	Result	Qualifier	RL	MDL	Unit	D	Prepared	Analyzed	Dil Fac
Carbon tetrachloride	<0.38		1.0	0.38	ug/L			09/14/23 03:48	1
Chloroethane	<0.51		1.0	0.51	ug/L			09/14/23 03:48	1
Chloroform	<0.37		2.0	0.37	ug/L			09/14/23 03:48	1
Chloromethane	<0.32		5.0	0.32	ug/L			09/14/23 03:48	1
cis-1,2-Dichloroethene	<0.41		1.0	0.41	ug/L			09/14/23 03:48	1
1,1-Dichloroethane	<0.41		1.0	0.41	ug/L			09/14/23 03:48	1
1,2-Dichloroethane	<0.39		1.0	0.39	ug/L			09/14/23 03:48	1
1,1-Dichloroethene	<0.39		1.0	0.39	ug/L			09/14/23 03:48	1
Methylene Chloride	<1.6		5.0	1.6	ug/L			09/14/23 03:48	1
Tetrachloroethene	<0.37		1.0	0.37	ug/L			09/14/23 03:48	1
trans-1,2-Dichloroethene	<0.35		1.0	0.35	ug/L			09/14/23 03:48	1
1,1,1-Trichloroethane	<0.38		1.0	0.38	ug/L			09/14/23 03:48	1
1,1,2-Trichloroethane	<0.35		1.0	0.35	ug/L			09/14/23 03:48	1
Trichloroethene	<0.16		0.50	0.16	ug/L			09/14/23 03:48	1
Vinyl chloride	<0.20		1.0	0.20	ug/L			09/14/23 03:48	1
Surrogate	%Recovery	Qualifier	Limits				Prepared	Analyzed	Dil Fac
4-Bromofluorobenzene (Surr)	116		72 - 124					09/14/23 03:48	1
Dibromofluoromethane	102		75 - 120					09/14/23 03:48	1
1,2-Dichloroethane-d4 (Surr)	98		75 - 126					09/14/23 03:48	1
Toluene-d8 (Surr)	92		75 - 120					09/14/23 03:48	1

Client Sample Results

Client: KPRG and Associates, Inc.
 Project/Site: Former Bask Dry Cleaners #10009

Job ID: 500-239224-1

Client Sample ID: MW-14

Lab Sample ID: 500-239224-10

Date Collected: 09/05/23 14:57

Matrix: Water

Date Received: 09/08/23 09:45

Method: SW846 8260D - Volatile Organic Compounds by GC/MS

Analyte	Result	Qualifier	RL	MDL	Unit	D	Prepared	Analyzed	Dil Fac
Carbon tetrachloride	<0.38		1.0	0.38	ug/L			09/14/23 04:12	1
Chloroethane	<0.51		1.0	0.51	ug/L			09/14/23 04:12	1
Chloroform	<0.37		2.0	0.37	ug/L			09/14/23 04:12	1
Chloromethane	<0.32		5.0	0.32	ug/L			09/14/23 04:12	1
cis-1,2-Dichloroethene	<0.41		1.0	0.41	ug/L			09/14/23 04:12	1
1,1-Dichloroethane	<0.41		1.0	0.41	ug/L			09/14/23 04:12	1
1,2-Dichloroethane	<0.39		1.0	0.39	ug/L			09/14/23 04:12	1
1,1-Dichloroethene	<0.39		1.0	0.39	ug/L			09/14/23 04:12	1
Methylene Chloride	<1.6		5.0	1.6	ug/L			09/14/23 04:12	1
Tetrachloroethene	1.0		1.0	0.37	ug/L			09/14/23 04:12	1
trans-1,2-Dichloroethene	<0.35		1.0	0.35	ug/L			09/14/23 04:12	1
1,1,1-Trichloroethane	<0.38		1.0	0.38	ug/L			09/14/23 04:12	1
1,1,2-Trichloroethane	<0.35		1.0	0.35	ug/L			09/14/23 04:12	1
Trichloroethene	<0.16		0.50	0.16	ug/L			09/14/23 04:12	1
Vinyl chloride	<0.20		1.0	0.20	ug/L			09/14/23 04:12	1
Surrogate	%Recovery	Qualifier	Limits				Prepared	Analyzed	Dil Fac
4-Bromofluorobenzene (Surr)	110		72 - 124					09/14/23 04:12	1
Dibromofluoromethane	102		75 - 120					09/14/23 04:12	1
1,2-Dichloroethane-d4 (Surr)	97		75 - 126					09/14/23 04:12	1
Toluene-d8 (Surr)	91		75 - 120					09/14/23 04:12	1

Client Sample Results

Client: KPRG and Associates, Inc.
 Project/Site: Former Bask Dry Cleaners #10009

Job ID: 500-239224-1

Client Sample ID: MW-10

Lab Sample ID: 500-239224-11

Date Collected: 09/05/23 15:42

Matrix: Water

Date Received: 09/08/23 09:45

Method: SW846 8260D - Volatile Organic Compounds by GC/MS

Analyte	Result	Qualifier	RL	MDL	Unit	D	Prepared	Analyzed	Dil Fac
Carbon tetrachloride	<0.38		1.0	0.38	ug/L			09/14/23 04:36	1
Chloroethane	<0.51		1.0	0.51	ug/L			09/14/23 04:36	1
Chloroform	<0.37		2.0	0.37	ug/L			09/14/23 04:36	1
Chloromethane	<0.32		5.0	0.32	ug/L			09/14/23 04:36	1
cis-1,2-Dichloroethene	3.9		1.0	0.41	ug/L			09/14/23 04:36	1
1,1-Dichloroethane	<0.41		1.0	0.41	ug/L			09/14/23 04:36	1
1,2-Dichloroethane	<0.39		1.0	0.39	ug/L			09/14/23 04:36	1
1,1-Dichloroethene	<0.39		1.0	0.39	ug/L			09/14/23 04:36	1
Methylene Chloride	<1.6		5.0	1.6	ug/L			09/14/23 04:36	1
Tetrachloroethene	8.4		1.0	0.37	ug/L			09/14/23 04:36	1
trans-1,2-Dichloroethene	<0.35		1.0	0.35	ug/L			09/14/23 04:36	1
1,1,1-Trichloroethane	<0.38		1.0	0.38	ug/L			09/14/23 04:36	1
1,1,2-Trichloroethane	<0.35		1.0	0.35	ug/L			09/14/23 04:36	1
Trichloroethene	1.8		0.50	0.16	ug/L			09/14/23 04:36	1
Vinyl chloride	<0.20		1.0	0.20	ug/L			09/14/23 04:36	1

Surrogate	%Recovery	Qualifier	Limits	Prepared	Analyzed	Dil Fac
4-Bromofluorobenzene (Surr)	113		72 - 124		09/14/23 04:36	1
Dibromofluoromethane	103		75 - 120		09/14/23 04:36	1
1,2-Dichloroethane-d4 (Surr)	96		75 - 126		09/14/23 04:36	1
Toluene-d8 (Surr)	92		75 - 120		09/14/23 04:36	1

Client Sample Results

Client: KPRG and Associates, Inc.
 Project/Site: Former Bask Dry Cleaners #10009

Job ID: 500-239224-1

Client Sample ID: MW-13

Lab Sample ID: 500-239224-12

Date Collected: 09/06/23 09:29

Matrix: Water

Date Received: 09/08/23 09:45

Method: SW846 8260D - Volatile Organic Compounds by GC/MS

Analyte	Result	Qualifier	RL	MDL	Unit	D	Prepared	Analyzed	Dil Fac
Carbon tetrachloride	<0.38		1.0	0.38	ug/L			09/14/23 05:00	1
Chloroethane	<0.51		1.0	0.51	ug/L			09/14/23 05:00	1
Chloroform	<0.37		2.0	0.37	ug/L			09/14/23 05:00	1
Chloromethane	<0.32		5.0	0.32	ug/L			09/14/23 05:00	1
cis-1,2-Dichloroethene	7.3		1.0	0.41	ug/L			09/14/23 05:00	1
1,1-Dichloroethane	<0.41		1.0	0.41	ug/L			09/14/23 05:00	1
1,2-Dichloroethane	<0.39		1.0	0.39	ug/L			09/14/23 05:00	1
1,1-Dichloroethene	<0.39		1.0	0.39	ug/L			09/14/23 05:00	1
Methylene Chloride	<1.6		5.0	1.6	ug/L			09/14/23 05:00	1
Tetrachloroethene	<0.37		1.0	0.37	ug/L			09/14/23 05:00	1
trans-1,2-Dichloroethene	0.82 J		1.0	0.35	ug/L			09/14/23 05:00	1
1,1,1-Trichloroethane	<0.38		1.0	0.38	ug/L			09/14/23 05:00	1
1,1,2-Trichloroethane	<0.35		1.0	0.35	ug/L			09/14/23 05:00	1
Trichloroethene	<0.16		0.50	0.16	ug/L			09/14/23 05:00	1
Vinyl chloride	<0.20		1.0	0.20	ug/L			09/14/23 05:00	1
Surrogate	%Recovery	Qualifier	Limits				Prepared	Analyzed	Dil Fac
4-Bromofluorobenzene (Surr)	111		72 - 124					09/14/23 05:00	1
Dibromofluoromethane	105		75 - 120					09/14/23 05:00	1
1,2-Dichloroethane-d4 (Surr)	100		75 - 126					09/14/23 05:00	1
Toluene-d8 (Surr)	91		75 - 120					09/14/23 05:00	1

Client Sample Results

Client: KPRG and Associates, Inc.
 Project/Site: Former Bask Dry Cleaners #10009

Job ID: 500-239224-1

Client Sample ID: MW-8

Lab Sample ID: 500-239224-13

Date Collected: 09/06/23 10:03

Matrix: Water

Date Received: 09/08/23 09:45

Method: SW846 8260D - Volatile Organic Compounds by GC/MS

Analyte	Result	Qualifier	RL	MDL	Unit	D	Prepared	Analyzed	Dil Fac
Carbon tetrachloride	<0.38		1.0	0.38	ug/L			09/14/23 12:42	1
Chloroethane	<0.51		1.0	0.51	ug/L			09/14/23 12:42	1
Chloroform	<0.37		2.0	0.37	ug/L			09/14/23 12:42	1
Chloromethane	<0.32		5.0	0.32	ug/L			09/14/23 12:42	1
cis-1,2-Dichloroethene	<0.41		1.0	0.41	ug/L			09/14/23 12:42	1
1,1-Dichloroethane	<0.41		1.0	0.41	ug/L			09/14/23 12:42	1
1,2-Dichloroethane	<0.39		1.0	0.39	ug/L			09/14/23 12:42	1
1,1-Dichloroethene	<0.39		1.0	0.39	ug/L			09/14/23 12:42	1
Methylene Chloride	<1.6		5.0	1.6	ug/L			09/14/23 12:42	1
Tetrachloroethene	3.6		1.0	0.37	ug/L			09/14/23 12:42	1
trans-1,2-Dichloroethene	<0.35		1.0	0.35	ug/L			09/14/23 12:42	1
1,1,1-Trichloroethane	<0.38		1.0	0.38	ug/L			09/14/23 12:42	1
1,1,2-Trichloroethane	<0.35		1.0	0.35	ug/L			09/14/23 12:42	1
Trichloroethene	0.23 J		0.50	0.16	ug/L			09/14/23 12:42	1
Vinyl chloride	<0.20		1.0	0.20	ug/L			09/14/23 12:42	1
Surrogate	%Recovery	Qualifier	Limits				Prepared	Analyzed	Dil Fac
4-Bromofluorobenzene (Surr)	111		72 - 124					09/14/23 12:42	1
Dibromofluoromethane	105		75 - 120					09/14/23 12:42	1
1,2-Dichloroethane-d4 (Surr)	99		75 - 126					09/14/23 12:42	1
Toluene-d8 (Surr)	91		75 - 120					09/14/23 12:42	1

Client Sample Results

Client: KPRG and Associates, Inc.
 Project/Site: Former Bask Dry Cleaners #10009

Job ID: 500-239224-1

Client Sample ID: MW-3

Lab Sample ID: 500-239224-14

Date Collected: 09/06/23 10:38

Matrix: Water

Date Received: 09/08/23 09:45

Method: SW846 8260D - Volatile Organic Compounds by GC/MS

Analyte	Result	Qualifier	RL	MDL	Unit	D	Prepared	Analyzed	Dil Fac
Carbon tetrachloride	<0.38		1.0	0.38	ug/L			09/14/23 13:06	1
Chloroethane	<0.51		1.0	0.51	ug/L			09/14/23 13:06	1
Chloroform	<0.37		2.0	0.37	ug/L			09/14/23 13:06	1
Chloromethane	<0.32		5.0	0.32	ug/L			09/14/23 13:06	1
cis-1,2-Dichloroethene	<0.41		1.0	0.41	ug/L			09/14/23 13:06	1
1,1-Dichloroethane	<0.41		1.0	0.41	ug/L			09/14/23 13:06	1
1,2-Dichloroethane	<0.39		1.0	0.39	ug/L			09/14/23 13:06	1
1,1-Dichloroethene	<0.39		1.0	0.39	ug/L			09/14/23 13:06	1
Methylene Chloride	<1.6		5.0	1.6	ug/L			09/14/23 13:06	1
Tetrachloroethene	<0.37		1.0	0.37	ug/L			09/14/23 13:06	1
trans-1,2-Dichloroethene	<0.35		1.0	0.35	ug/L			09/14/23 13:06	1
1,1,1-Trichloroethane	<0.38		1.0	0.38	ug/L			09/14/23 13:06	1
1,1,2-Trichloroethane	<0.35		1.0	0.35	ug/L			09/14/23 13:06	1
Trichloroethene	<0.16		0.50	0.16	ug/L			09/14/23 13:06	1
Vinyl chloride	<0.20		1.0	0.20	ug/L			09/14/23 13:06	1
Surrogate	%Recovery	Qualifier	Limits				Prepared	Analyzed	Dil Fac
4-Bromofluorobenzene (Surr)	110		72 - 124					09/14/23 13:06	1
Dibromofluoromethane	105		75 - 120					09/14/23 13:06	1
1,2-Dichloroethane-d4 (Surr)	100		75 - 126					09/14/23 13:06	1
Toluene-d8 (Surr)	92		75 - 120					09/14/23 13:06	1

Client Sample Results

Client: KPRG and Associates, Inc.
 Project/Site: Former Bask Dry Cleaners #10009

Job ID: 500-239224-1

Client Sample ID: MW-5

Lab Sample ID: 500-239224-15

Date Collected: 09/06/23 11:15

Matrix: Water

Date Received: 09/08/23 09:45

Method: SW846 8260D - Volatile Organic Compounds by GC/MS

Analyte	Result	Qualifier	RL	MDL	Unit	D	Prepared	Analyzed	Dil Fac
Carbon tetrachloride	<0.38		1.0	0.38	ug/L			09/14/23 13:30	1
Chloroethane	<0.51		1.0	0.51	ug/L			09/14/23 13:30	1
Chloroform	<0.37		2.0	0.37	ug/L			09/14/23 13:30	1
Chloromethane	<0.32		5.0	0.32	ug/L			09/14/23 13:30	1
cis-1,2-Dichloroethene	0.70	J	1.0	0.41	ug/L			09/14/23 13:30	1
1,1-Dichloroethane	<0.41		1.0	0.41	ug/L			09/14/23 13:30	1
1,2-Dichloroethane	<0.39		1.0	0.39	ug/L			09/14/23 13:30	1
1,1-Dichloroethene	<0.39		1.0	0.39	ug/L			09/14/23 13:30	1
Methylene Chloride	<1.6		5.0	1.6	ug/L			09/14/23 13:30	1
Tetrachloroethene	<0.37		1.0	0.37	ug/L			09/14/23 13:30	1
trans-1,2-Dichloroethene	3.0		1.0	0.35	ug/L			09/14/23 13:30	1
1,1,1-Trichloroethane	<0.38		1.0	0.38	ug/L			09/14/23 13:30	1
1,1,2-Trichloroethane	<0.35		1.0	0.35	ug/L			09/14/23 13:30	1
Trichloroethene	1.5		0.50	0.16	ug/L			09/14/23 13:30	1
Vinyl chloride	0.33	J	1.0	0.20	ug/L			09/14/23 13:30	1
Surrogate	%Recovery	Qualifier	Limits				Prepared	Analyzed	Dil Fac
4-Bromofluorobenzene (Surr)	104		72 - 124					09/14/23 13:30	1
Dibromofluoromethane	103		75 - 120					09/14/23 13:30	1
1,2-Dichloroethane-d4 (Surr)	98		75 - 126					09/14/23 13:30	1
Toluene-d8 (Surr)	92		75 - 120					09/14/23 13:30	1

Client Sample Results

Client: KPRG and Associates, Inc.
 Project/Site: Former Bask Dry Cleaners #10009

Job ID: 500-239224-1

Client Sample ID: MW-7

Lab Sample ID: 500-239224-16

Date Collected: 09/06/23 11:49

Matrix: Water

Date Received: 09/08/23 09:45

Method: SW846 8260D - Volatile Organic Compounds by GC/MS

Analyte	Result	Qualifier	RL	MDL	Unit	D	Prepared	Analyzed	Dil Fac
Carbon tetrachloride	<0.38		1.0	0.38	ug/L			09/14/23 13:55	1
Chloroethane	<0.51		1.0	0.51	ug/L			09/14/23 13:55	1
Chloroform	<0.37		2.0	0.37	ug/L			09/14/23 13:55	1
Chloromethane	<0.32		5.0	0.32	ug/L			09/14/23 13:55	1
cis-1,2-Dichloroethene	0.43	J	1.0	0.41	ug/L			09/14/23 13:55	1
1,1-Dichloroethane	<0.41		1.0	0.41	ug/L			09/14/23 13:55	1
1,2-Dichloroethane	<0.39		1.0	0.39	ug/L			09/14/23 13:55	1
1,1-Dichloroethene	<0.39		1.0	0.39	ug/L			09/14/23 13:55	1
Methylene Chloride	<1.6		5.0	1.6	ug/L			09/14/23 13:55	1
Tetrachloroethene	<0.37		1.0	0.37	ug/L			09/14/23 13:55	1
trans-1,2-Dichloroethene	<0.35		1.0	0.35	ug/L			09/14/23 13:55	1
1,1,1-Trichloroethane	<0.38		1.0	0.38	ug/L			09/14/23 13:55	1
1,1,2-Trichloroethane	<0.35		1.0	0.35	ug/L			09/14/23 13:55	1
Trichloroethene	2.6		0.50	0.16	ug/L			09/14/23 13:55	1
Vinyl chloride	0.26	J	1.0	0.20	ug/L			09/14/23 13:55	1
Surrogate	%Recovery	Qualifier	Limits				Prepared	Analyzed	Dil Fac
4-Bromofluorobenzene (Surr)	108		72 - 124					09/14/23 13:55	1
Dibromofluoromethane	104		75 - 120					09/14/23 13:55	1
1,2-Dichloroethane-d4 (Surr)	99		75 - 126					09/14/23 13:55	1
Toluene-d8 (Surr)	90		75 - 120					09/14/23 13:55	1

Client Sample Results

Client: KPRG and Associates, Inc.
 Project/Site: Former Bask Dry Cleaners #10009

Job ID: 500-239224-1

Client Sample ID: MW-12

Lab Sample ID: 500-239224-17

Date Collected: 09/06/23 12:35

Matrix: Water

Date Received: 09/08/23 09:45

Method: SW846 8260D - Volatile Organic Compounds by GC/MS

Analyte	Result	Qualifier	RL	MDL	Unit	D	Prepared	Analyzed	Dil Fac
Carbon tetrachloride	<0.38		1.0	0.38	ug/L			09/14/23 14:19	1
Chloroethane	<0.51		1.0	0.51	ug/L			09/14/23 14:19	1
Chloroform	<0.37		2.0	0.37	ug/L			09/14/23 14:19	1
Chloromethane	<0.32		5.0	0.32	ug/L			09/14/23 14:19	1
cis-1,2-Dichloroethene	1.5		1.0	0.41	ug/L			09/14/23 14:19	1
1,1-Dichloroethane	<0.41		1.0	0.41	ug/L			09/14/23 14:19	1
1,2-Dichloroethane	<0.39		1.0	0.39	ug/L			09/14/23 14:19	1
1,1-Dichloroethene	<0.39		1.0	0.39	ug/L			09/14/23 14:19	1
Methylene Chloride	<1.6		5.0	1.6	ug/L			09/14/23 14:19	1
Tetrachloroethene	5.3		1.0	0.37	ug/L			09/14/23 14:19	1
trans-1,2-Dichloroethene	<0.35		1.0	0.35	ug/L			09/14/23 14:19	1
1,1,1-Trichloroethane	<0.38		1.0	0.38	ug/L			09/14/23 14:19	1
1,1,2-Trichloroethane	<0.35		1.0	0.35	ug/L			09/14/23 14:19	1
Trichloroethene	0.65		0.50	0.16	ug/L			09/14/23 14:19	1
Vinyl chloride	<0.20		1.0	0.20	ug/L			09/14/23 14:19	1
Surrogate	%Recovery	Qualifier	Limits				Prepared	Analyzed	Dil Fac
4-Bromofluorobenzene (Surr)	109		72 - 124					09/14/23 14:19	1
Dibromofluoromethane	104		75 - 120					09/14/23 14:19	1
1,2-Dichloroethane-d4 (Surr)	97		75 - 126					09/14/23 14:19	1
Toluene-d8 (Surr)	90		75 - 120					09/14/23 14:19	1

Client Sample Results

Client: KPRG and Associates, Inc.
 Project/Site: Former Bask Dry Cleaners #10009

Job ID: 500-239224-1

Client Sample ID: MW-11

Lab Sample ID: 500-239224-18

Date Collected: 09/06/23 13:04

Matrix: Water

Date Received: 09/08/23 09:45

Method: SW846 8260D - Volatile Organic Compounds by GC/MS

Analyte	Result	Qualifier	RL	MDL	Unit	D	Prepared	Analyzed	Dil Fac
Carbon tetrachloride	<0.38		1.0	0.38	ug/L			09/14/23 14:43	1
Chloroethane	<0.51		1.0	0.51	ug/L			09/14/23 14:43	1
Chloroform	<0.37		2.0	0.37	ug/L			09/14/23 14:43	1
Chloromethane	<0.32		5.0	0.32	ug/L			09/14/23 14:43	1
cis-1,2-Dichloroethene	<0.41		1.0	0.41	ug/L			09/14/23 14:43	1
1,1-Dichloroethane	<0.41		1.0	0.41	ug/L			09/14/23 14:43	1
1,2-Dichloroethane	<0.39		1.0	0.39	ug/L			09/14/23 14:43	1
1,1-Dichloroethene	<0.39		1.0	0.39	ug/L			09/14/23 14:43	1
Methylene Chloride	<1.6		5.0	1.6	ug/L			09/14/23 14:43	1
Tetrachloroethene	<0.37		1.0	0.37	ug/L			09/14/23 14:43	1
trans-1,2-Dichloroethene	<0.35		1.0	0.35	ug/L			09/14/23 14:43	1
1,1,1-Trichloroethane	<0.38		1.0	0.38	ug/L			09/14/23 14:43	1
1,1,2-Trichloroethane	<0.35		1.0	0.35	ug/L			09/14/23 14:43	1
Trichloroethene	<0.16		0.50	0.16	ug/L			09/14/23 14:43	1
Vinyl chloride	<0.20		1.0	0.20	ug/L			09/14/23 14:43	1
Surrogate	%Recovery	Qualifier	Limits				Prepared	Analyzed	Dil Fac
4-Bromofluorobenzene (Surr)	113		72 - 124					09/14/23 14:43	1
Dibromofluoromethane	102		75 - 120					09/14/23 14:43	1
1,2-Dichloroethane-d4 (Surr)	97		75 - 126					09/14/23 14:43	1
Toluene-d8 (Surr)	92		75 - 120					09/14/23 14:43	1

Client Sample Results

Client: KPRG and Associates, Inc.
 Project/Site: Former Bask Dry Cleaners #10009

Job ID: 500-239224-1

Client Sample ID: MW-9

Lab Sample ID: 500-239224-19

Date Collected: 09/06/23 13:39

Matrix: Water

Date Received: 09/08/23 09:45

Method: SW846 8260D - Volatile Organic Compounds by GC/MS

Analyte	Result	Qualifier	RL	MDL	Unit	D	Prepared	Analyzed	Dil Fac
Carbon tetrachloride	<0.38		1.0	0.38	ug/L			09/14/23 15:07	1
Chloroethane	<0.51		1.0	0.51	ug/L			09/14/23 15:07	1
Chloroform	<0.37		2.0	0.37	ug/L			09/14/23 15:07	1
Chloromethane	<0.32		5.0	0.32	ug/L			09/14/23 15:07	1
cis-1,2-Dichloroethene	<0.41		1.0	0.41	ug/L			09/14/23 15:07	1
1,1-Dichloroethane	<0.41		1.0	0.41	ug/L			09/14/23 15:07	1
1,2-Dichloroethane	<0.39		1.0	0.39	ug/L			09/14/23 15:07	1
1,1-Dichloroethene	<0.39		1.0	0.39	ug/L			09/14/23 15:07	1
Methylene Chloride	<1.6		5.0	1.6	ug/L			09/14/23 15:07	1
Tetrachloroethene	<0.37		1.0	0.37	ug/L			09/14/23 15:07	1
trans-1,2-Dichloroethene	<0.35		1.0	0.35	ug/L			09/14/23 15:07	1
1,1,1-Trichloroethane	<0.38		1.0	0.38	ug/L			09/14/23 15:07	1
1,1,2-Trichloroethane	<0.35		1.0	0.35	ug/L			09/14/23 15:07	1
Trichloroethene	<0.16		0.50	0.16	ug/L			09/14/23 15:07	1
Vinyl chloride	<0.20		1.0	0.20	ug/L			09/14/23 15:07	1
Surrogate	%Recovery	Qualifier	Limits				Prepared	Analyzed	Dil Fac
4-Bromofluorobenzene (Surr)	109		72 - 124					09/14/23 15:07	1
Dibromofluoromethane	103		75 - 120					09/14/23 15:07	1
1,2-Dichloroethane-d4 (Surr)	97		75 - 126					09/14/23 15:07	1
Toluene-d8 (Surr)	91		75 - 120					09/14/23 15:07	1

Client Sample Results

Client: KPRG and Associates, Inc.
 Project/Site: Former Bask Dry Cleaners #10009

Job ID: 500-239224-1

Client Sample ID: MW-16

Lab Sample ID: 500-239224-20

Date Collected: 09/06/23 14:13

Matrix: Water

Date Received: 09/08/23 09:45

Method: SW846 8260D - Volatile Organic Compounds by GC/MS

Analyte	Result	Qualifier	RL	MDL	Unit	D	Prepared	Analyzed	Dil Fac
Carbon tetrachloride	<0.38		1.0	0.38	ug/L			09/14/23 15:31	1
Chloroethane	<0.51		1.0	0.51	ug/L			09/14/23 15:31	1
Chloroform	<0.37		2.0	0.37	ug/L			09/14/23 15:31	1
Chloromethane	<0.32		5.0	0.32	ug/L			09/14/23 15:31	1
cis-1,2-Dichloroethene	<0.41		1.0	0.41	ug/L			09/14/23 15:31	1
1,1-Dichloroethane	<0.41		1.0	0.41	ug/L			09/14/23 15:31	1
1,2-Dichloroethane	<0.39		1.0	0.39	ug/L			09/14/23 15:31	1
1,1-Dichloroethene	<0.39		1.0	0.39	ug/L			09/14/23 15:31	1
Methylene Chloride	<1.6		5.0	1.6	ug/L			09/14/23 15:31	1
Tetrachloroethene	14		1.0	0.37	ug/L			09/14/23 15:31	1
trans-1,2-Dichloroethene	<0.35		1.0	0.35	ug/L			09/14/23 15:31	1
1,1,1-Trichloroethane	<0.38		1.0	0.38	ug/L			09/14/23 15:31	1
1,1,2-Trichloroethane	<0.35		1.0	0.35	ug/L			09/14/23 15:31	1
Trichloroethene	0.34 J		0.50	0.16	ug/L			09/14/23 15:31	1
Vinyl chloride	<0.20		1.0	0.20	ug/L			09/14/23 15:31	1
Surrogate	%Recovery	Qualifier	Limits				Prepared	Analyzed	Dil Fac
4-Bromofluorobenzene (Surr)	111		72 - 124					09/14/23 15:31	1
Dibromofluoromethane	104		75 - 120					09/14/23 15:31	1
1,2-Dichloroethane-d4 (Surr)	98		75 - 126					09/14/23 15:31	1
Toluene-d8 (Surr)	91		75 - 120					09/14/23 15:31	1

Client Sample Results

Client: KPRG and Associates, Inc.
 Project/Site: Former Bask Dry Cleaners #10009

Job ID: 500-239224-1

Client Sample ID: PZ-1

Lab Sample ID: 500-239224-21

Date Collected: 09/06/23 14:56

Matrix: Water

Date Received: 09/08/23 09:45

Method: SW846 8260D - Volatile Organic Compounds by GC/MS

Analyte	Result	Qualifier	RL	MDL	Unit	D	Prepared	Analyzed	Dil Fac
Carbon tetrachloride	<0.38		1.0	0.38	ug/L			09/14/23 15:55	1
Chloroethane	<0.51		1.0	0.51	ug/L			09/14/23 15:55	1
Chloroform	<0.37		2.0	0.37	ug/L			09/14/23 15:55	1
Chloromethane	<0.32		5.0	0.32	ug/L			09/14/23 15:55	1
cis-1,2-Dichloroethene	<0.41		1.0	0.41	ug/L			09/14/23 15:55	1
1,1-Dichloroethane	<0.41		1.0	0.41	ug/L			09/14/23 15:55	1
1,2-Dichloroethane	<0.39		1.0	0.39	ug/L			09/14/23 15:55	1
1,1-Dichloroethene	<0.39		1.0	0.39	ug/L			09/14/23 15:55	1
Methylene Chloride	<1.6		5.0	1.6	ug/L			09/14/23 15:55	1
Tetrachloroethene	<0.37		1.0	0.37	ug/L			09/14/23 15:55	1
trans-1,2-Dichloroethene	<0.35		1.0	0.35	ug/L			09/14/23 15:55	1
1,1,1-Trichloroethane	<0.38		1.0	0.38	ug/L			09/14/23 15:55	1
1,1,2-Trichloroethane	<0.35		1.0	0.35	ug/L			09/14/23 15:55	1
Trichloroethene	<0.16		0.50	0.16	ug/L			09/14/23 15:55	1
Vinyl chloride	<0.20		1.0	0.20	ug/L			09/14/23 15:55	1
Surrogate	%Recovery	Qualifier	Limits				Prepared	Analyzed	Dil Fac
4-Bromofluorobenzene (Surr)	111		72 - 124					09/14/23 15:55	1
Dibromofluoromethane	106		75 - 120					09/14/23 15:55	1
1,2-Dichloroethane-d4 (Surr)	99		75 - 126					09/14/23 15:55	1
Toluene-d8 (Surr)	89		75 - 120					09/14/23 15:55	1

Client Sample Results

Client: KPRG and Associates, Inc.
 Project/Site: Former Bask Dry Cleaners #10009

Job ID: 500-239224-1

Client Sample ID: MW-4

Lab Sample ID: 500-239224-22

Date Collected: 09/06/23 15:12

Matrix: Water

Date Received: 09/08/23 09:45

Method: SW846 8260D - Volatile Organic Compounds by GC/MS

Analyte	Result	Qualifier	RL	MDL	Unit	D	Prepared	Analyzed	Dil Fac
Carbon tetrachloride	<0.38		1.0	0.38	ug/L			09/14/23 16:19	1
Chloroethane	<0.51		1.0	0.51	ug/L			09/14/23 16:19	1
Chloroform	<0.37		2.0	0.37	ug/L			09/14/23 16:19	1
Chloromethane	<0.32		5.0	0.32	ug/L			09/14/23 16:19	1
cis-1,2-Dichloroethene	<0.41		1.0	0.41	ug/L			09/14/23 16:19	1
1,1-Dichloroethane	<0.41		1.0	0.41	ug/L			09/14/23 16:19	1
1,2-Dichloroethane	<0.39		1.0	0.39	ug/L			09/14/23 16:19	1
1,1-Dichloroethene	<0.39		1.0	0.39	ug/L			09/14/23 16:19	1
Methylene Chloride	<1.6		5.0	1.6	ug/L			09/14/23 16:19	1
Tetrachloroethene	<0.37		1.0	0.37	ug/L			09/14/23 16:19	1
trans-1,2-Dichloroethene	<0.35		1.0	0.35	ug/L			09/14/23 16:19	1
1,1,1-Trichloroethane	<0.38		1.0	0.38	ug/L			09/14/23 16:19	1
1,1,2-Trichloroethane	<0.35		1.0	0.35	ug/L			09/14/23 16:19	1
Trichloroethene	<0.16		0.50	0.16	ug/L			09/14/23 16:19	1
Vinyl chloride	<0.20		1.0	0.20	ug/L			09/14/23 16:19	1
Surrogate	%Recovery	Qualifier	Limits				Prepared	Analyzed	Dil Fac
4-Bromofluorobenzene (Surr)	113		72 - 124					09/14/23 16:19	1
Dibromofluoromethane	106		75 - 120					09/14/23 16:19	1
1,2-Dichloroethane-d4 (Surr)	98		75 - 126					09/14/23 16:19	1
Toluene-d8 (Surr)	90		75 - 120					09/14/23 16:19	1

Client Sample Results

Client: KPRG and Associates, Inc.
 Project/Site: Former Bask Dry Cleaners #10009

Job ID: 500-239224-1

Client Sample ID: MW-6

Lab Sample ID: 500-239224-23

Date Collected: 09/06/23 15:30

Matrix: Water

Date Received: 09/08/23 09:45

Method: SW846 8260D - Volatile Organic Compounds by GC/MS

Analyte	Result	Qualifier	RL	MDL	Unit	D	Prepared	Analyzed	Dil Fac
Carbon tetrachloride	<0.38		1.0	0.38	ug/L			09/14/23 16:44	1
Chloroethane	<0.51		1.0	0.51	ug/L			09/14/23 16:44	1
Chloroform	<0.37		2.0	0.37	ug/L			09/14/23 16:44	1
Chloromethane	<0.32		5.0	0.32	ug/L			09/14/23 16:44	1
cis-1,2-Dichloroethene	130		1.0	0.41	ug/L			09/14/23 16:44	1
1,1-Dichloroethane	<0.41		1.0	0.41	ug/L			09/14/23 16:44	1
1,2-Dichloroethane	<0.39		1.0	0.39	ug/L			09/14/23 16:44	1
1,1-Dichloroethene	<0.39		1.0	0.39	ug/L			09/14/23 16:44	1
Methylene Chloride	<1.6		5.0	1.6	ug/L			09/14/23 16:44	1
Tetrachloroethene	180		1.0	0.37	ug/L			09/14/23 16:44	1
trans-1,2-Dichloroethene	3.1		1.0	0.35	ug/L			09/14/23 16:44	1
1,1,1-Trichloroethane	<0.38		1.0	0.38	ug/L			09/14/23 16:44	1
1,1,2-Trichloroethane	<0.35		1.0	0.35	ug/L			09/14/23 16:44	1
Trichloroethene	25		0.50	0.16	ug/L			09/14/23 16:44	1
Vinyl chloride	5.6		1.0	0.20	ug/L			09/14/23 16:44	1
Surrogate	%Recovery	Qualifier	Limits				Prepared	Analyzed	Dil Fac
4-Bromofluorobenzene (Surr)	112		72 - 124					09/14/23 16:44	1
Dibromofluoromethane	103		75 - 120					09/14/23 16:44	1
1,2-Dichloroethane-d4 (Surr)	96		75 - 126					09/14/23 16:44	1
Toluene-d8 (Surr)	89		75 - 120					09/14/23 16:44	1

Client Sample Results

Client: KPRG and Associates, Inc.
 Project/Site: Former Bask Dry Cleaners #10009

Job ID: 500-239224-1

Client Sample ID: Duplicate 1

Lab Sample ID: 500-239224-24

Date Collected: 09/06/23 00:00

Matrix: Water

Date Received: 09/08/23 09:45

Method: SW846 8260D - Volatile Organic Compounds by GC/MS

Analyte	Result	Qualifier	RL	MDL	Unit	D	Prepared	Analyzed	Dil Fac
Carbon tetrachloride	<0.38		1.0	0.38	ug/L			09/14/23 17:08	1
Chloroethane	<0.51		1.0	0.51	ug/L			09/14/23 17:08	1
Chloroform	<0.37		2.0	0.37	ug/L			09/14/23 17:08	1
Chloromethane	<0.32		5.0	0.32	ug/L			09/14/23 17:08	1
cis-1,2-Dichloroethene	<0.41		1.0	0.41	ug/L			09/14/23 17:08	1
1,1-Dichloroethane	<0.41		1.0	0.41	ug/L			09/14/23 17:08	1
1,2-Dichloroethane	<0.39		1.0	0.39	ug/L			09/14/23 17:08	1
1,1-Dichloroethene	<0.39		1.0	0.39	ug/L			09/14/23 17:08	1
Methylene Chloride	<1.6		5.0	1.6	ug/L			09/14/23 17:08	1
Tetrachloroethene	<0.37		1.0	0.37	ug/L			09/14/23 17:08	1
trans-1,2-Dichloroethene	<0.35		1.0	0.35	ug/L			09/14/23 17:08	1
1,1,1-Trichloroethane	<0.38		1.0	0.38	ug/L			09/14/23 17:08	1
1,1,2-Trichloroethane	<0.35		1.0	0.35	ug/L			09/14/23 17:08	1
Trichloroethene	<0.16		0.50	0.16	ug/L			09/14/23 17:08	1
Vinyl chloride	<0.20		1.0	0.20	ug/L			09/14/23 17:08	1
Surrogate	%Recovery	Qualifier	Limits				Prepared	Analyzed	Dil Fac
4-Bromofluorobenzene (Surr)	111		72 - 124					09/14/23 17:08	1
Dibromofluoromethane	106		75 - 120					09/14/23 17:08	1
1,2-Dichloroethane-d4 (Surr)	100		75 - 126					09/14/23 17:08	1
Toluene-d8 (Surr)	91		75 - 120					09/14/23 17:08	1

Client Sample Results

Client: KPRG and Associates, Inc.
 Project/Site: Former Bask Dry Cleaners #10009

Job ID: 500-239224-1

Client Sample ID: Trip Blank

Lab Sample ID: 500-239224-25

Date Collected: 09/05/23 00:00

Matrix: Water

Date Received: 09/08/23 09:45

Method: SW846 8260D - Volatile Organic Compounds by GC/MS

Analyte	Result	Qualifier	RL	MDL	Unit	D	Prepared	Analyzed	Dil Fac
Carbon tetrachloride	<0.38		1.0	0.38	ug/L			09/14/23 00:56	1
Chloroethane	<0.51		1.0	0.51	ug/L			09/14/23 00:56	1
Chloroform	<0.37		2.0	0.37	ug/L			09/14/23 00:56	1
Chloromethane	<0.32		5.0	0.32	ug/L			09/14/23 00:56	1
cis-1,2-Dichloroethene	<0.41		1.0	0.41	ug/L			09/14/23 00:56	1
1,1-Dichloroethane	<0.41		1.0	0.41	ug/L			09/14/23 00:56	1
1,2-Dichloroethane	<0.39		1.0	0.39	ug/L			09/14/23 00:56	1
1,1-Dichloroethene	<0.39		1.0	0.39	ug/L			09/14/23 00:56	1
Methylene Chloride	<1.6		5.0	1.6	ug/L			09/14/23 00:56	1
Tetrachloroethene	<0.37		1.0	0.37	ug/L			09/14/23 00:56	1
trans-1,2-Dichloroethene	<0.35		1.0	0.35	ug/L			09/14/23 00:56	1
1,1,1-Trichloroethane	<0.38		1.0	0.38	ug/L			09/14/23 00:56	1
1,1,2-Trichloroethane	<0.35		1.0	0.35	ug/L			09/14/23 00:56	1
Trichloroethene	<0.16		0.50	0.16	ug/L			09/14/23 00:56	1
Vinyl chloride	<0.20		1.0	0.20	ug/L			09/14/23 00:56	1

Surrogate	%Recovery	Qualifier	Limits	Prepared	Analyzed	Dil Fac
4-Bromofluorobenzene (Surr)	110		72 - 124		09/14/23 00:56	1
Dibromofluoromethane	100		75 - 120		09/14/23 00:56	1
1,2-Dichloroethane-d4 (Surr)	92		75 - 126		09/14/23 00:56	1
Toluene-d8 (Surr)	93		75 - 120		09/14/23 00:56	1

Definitions/Glossary

Client: KPRG and Associates, Inc.
Project/Site: Former Bask Dry Cleaners #10009

Job ID: 500-239224-1

Qualifiers

GC/MS VOA

Qualifier	Qualifier Description
J	Result is less than the RL but greater than or equal to the MDL and the concentration is an approximate value.

Glossary

Abbreviation	These commonly used abbreviations may or may not be present in this report.
α	Listed under the "D" column to designate that the result is reported on a dry weight basis
%R	Percent Recovery
CFL	Contains Free Liquid
CFU	Colony Forming Unit
CNF	Contains No Free Liquid
DER	Duplicate Error Ratio (normalized absolute difference)
Dil Fac	Dilution Factor
DL	Detection Limit (DoD/DOE)
DL, RA, RE, IN	Indicates a Dilution, Re-analysis, Re-extraction, or additional Initial metals/anion analysis of the sample
DLC	Decision Level Concentration (Radiochemistry)
EDL	Estimated Detection Limit (Dioxin)
LOD	Limit of Detection (DoD/DOE)
LOQ	Limit of Quantitation (DoD/DOE)
MCL	EPA recommended "Maximum Contaminant Level"
MDA	Minimum Detectable Activity (Radiochemistry)
MDC	Minimum Detectable Concentration (Radiochemistry)
MDL	Method Detection Limit
ML	Minimum Level (Dioxin)
MPN	Most Probable Number
MQL	Method Quantitation Limit
NC	Not Calculated
ND	Not Detected at the reporting limit (or MDL or EDL if shown)
NEG	Negative / Absent
POS	Positive / Present
PQL	Practical Quantitation Limit
PRES	Presumptive
QC	Quality Control
RER	Relative Error Ratio (Radiochemistry)
RL	Reporting Limit or Requested Limit (Radiochemistry)
RPD	Relative Percent Difference, a measure of the relative difference between two points
TEF	Toxicity Equivalent Factor (Dioxin)
TEQ	Toxicity Equivalent Quotient (Dioxin)
TNTC	Too Numerous To Count

QC Association Summary

Client: KPRG and Associates, Inc.
 Project/Site: Former Bask Dry Cleaners #10009

Job ID: 500-239224-1

GC/MS VOA

Analysis Batch: 732186

Lab Sample ID	Client Sample ID	Prep Type	Matrix	Method	Prep Batch
500-239224-1	MW-21	Total/NA	Water	8260D	
500-239224-2	MW-23	Total/NA	Water	8260D	
500-239224-3	MW-22	Total/NA	Water	8260D	
500-239224-4	MW-20	Total/NA	Water	8260D	
500-239224-5	MW-19	Total/NA	Water	8260D	
500-239224-6	MW-15	Total/NA	Water	8260D	
500-239224-9	MW-24	Total/NA	Water	8260D	
500-239224-10	MW-14	Total/NA	Water	8260D	
500-239224-11	MW-10	Total/NA	Water	8260D	
500-239224-12	MW-13	Total/NA	Water	8260D	
500-239224-25	Trip Blank	Total/NA	Water	8260D	
MB 500-732186/6	Method Blank	Total/NA	Water	8260D	
LCS 500-732186/4	Lab Control Sample	Total/NA	Water	8260D	
500-239224-1 MS	MW-21	Total/NA	Water	8260D	
500-239224-1 MSD	MW-21	Total/NA	Water	8260D	

Analysis Batch: 732217

Lab Sample ID	Client Sample ID	Prep Type	Matrix	Method	Prep Batch
500-239224-7	MW-17	Total/NA	Water	8260D	
500-239224-8	MW-18	Total/NA	Water	8260D	
500-239224-13	MW-8	Total/NA	Water	8260D	
500-239224-14	MW-3	Total/NA	Water	8260D	
500-239224-15	MW-5	Total/NA	Water	8260D	
500-239224-16	MW-7	Total/NA	Water	8260D	
500-239224-17	MW-12	Total/NA	Water	8260D	
500-239224-18	MW-11	Total/NA	Water	8260D	
500-239224-19	MW-9	Total/NA	Water	8260D	
500-239224-20	MW-16	Total/NA	Water	8260D	
500-239224-21	PZ-1	Total/NA	Water	8260D	
500-239224-22	MW-4	Total/NA	Water	8260D	
500-239224-23	MW-6	Total/NA	Water	8260D	
500-239224-24	Duplicate 1	Total/NA	Water	8260D	
MB 500-732217/6	Method Blank	Total/NA	Water	8260D	
LCS 500-732217/4	Lab Control Sample	Total/NA	Water	8260D	

Surrogate Summary

Client: KPRG and Associates, Inc.
 Project/Site: Former Bask Dry Cleaners #10009

Job ID: 500-239224-1

Method: 8260D - Volatile Organic Compounds by GC/MS

Matrix: Water

Prep Type: Total/NA

Lab Sample ID	Client Sample ID	Percent Surrogate Recovery (Acceptance Limits)			
		BFB (72-124)	DBFM (75-120)	DCA (75-126)	TOL (75-120)
500-239224-1	MW-21	110	100	92	92
500-239224-1 MS	MW-21	108	98	92	94
500-239224-1 MSD	MW-21	110	99	92	92
500-239224-2	MW-23	112	101	97	93
500-239224-3	MW-22	111	101	97	91
500-239224-4	MW-20	114	101	97	92
500-239224-5	MW-19	113	101	97	92
500-239224-6	MW-15	115	100	97	92
500-239224-7	MW-17	111	104	99	90
500-239224-8	MW-18	110	101	98	92
500-239224-9	MW-24	116	102	98	92
500-239224-10	MW-14	110	102	97	91
500-239224-11	MW-10	113	103	96	92
500-239224-12	MW-13	111	105	100	91
500-239224-13	MW-8	111	105	99	91
500-239224-14	MW-3	110	105	100	92
500-239224-15	MW-5	104	103	98	92
500-239224-16	MW-7	108	104	99	90
500-239224-17	MW-12	109	104	97	90
500-239224-18	MW-11	113	102	97	92
500-239224-19	MW-9	109	103	97	91
500-239224-20	MW-16	111	104	98	91
500-239224-21	PZ-1	111	106	99	89
500-239224-22	MW-4	113	106	98	90
500-239224-23	MW-6	112	103	96	89
500-239224-24	Duplicate 1	111	106	100	91
500-239224-25	Trip Blank	110	100	92	93
LCS 500-732186/4	Lab Control Sample	109	95	92	94
LCS 500-732217/4	Lab Control Sample	106	96	93	94
MB 500-732186/6	Method Blank	114	103	98	92
MB 500-732217/6	Method Blank	111	101	97	91

Surrogate Legend

BFB = 4-Bromofluorobenzene (Surr)
 DBFM = Dibromofluoromethane
 DCA = 1,2-Dichloroethane-d4 (Surr)
 TOL = Toluene-d8 (Surr)

QC Sample Results

Client: KPRG and Associates, Inc.
 Project/Site: Former Bask Dry Cleaners #10009

Job ID: 500-239224-1

Method: 8260D - Volatile Organic Compounds by GC/MS

Lab Sample ID: MB 500-732186/6
Matrix: Water
Analysis Batch: 732186

Client Sample ID: Method Blank
Prep Type: Total/NA

Analyte	MB	MB	RL	MDL	Unit	D	Prepared	Analyzed	Dil Fac
	Result	Qualifier							
Carbon tetrachloride	<0.38		1.0	0.38	ug/L			09/13/23 22:29	1
Chloroethane	<0.51		1.0	0.51	ug/L			09/13/23 22:29	1
Chloroform	<0.37		2.0	0.37	ug/L			09/13/23 22:29	1
Chloromethane	<0.32		5.0	0.32	ug/L			09/13/23 22:29	1
cis-1,2-Dichloroethene	<0.41		1.0	0.41	ug/L			09/13/23 22:29	1
1,1-Dichloroethane	<0.41		1.0	0.41	ug/L			09/13/23 22:29	1
1,2-Dichloroethane	<0.39		1.0	0.39	ug/L			09/13/23 22:29	1
1,1-Dichloroethene	<0.39		1.0	0.39	ug/L			09/13/23 22:29	1
Methylene Chloride	<1.6		5.0	1.6	ug/L			09/13/23 22:29	1
Tetrachloroethene	<0.37		1.0	0.37	ug/L			09/13/23 22:29	1
trans-1,2-Dichloroethene	<0.35		1.0	0.35	ug/L			09/13/23 22:29	1
1,1,1-Trichloroethane	<0.38		1.0	0.38	ug/L			09/13/23 22:29	1
1,1,2-Trichloroethane	<0.35		1.0	0.35	ug/L			09/13/23 22:29	1
Trichloroethene	<0.16		0.50	0.16	ug/L			09/13/23 22:29	1
Vinyl chloride	<0.20		1.0	0.20	ug/L			09/13/23 22:29	1

Surrogate	MB	MB	Limits	Prepared	Analyzed	Dil Fac
	%Recovery	Qualifier				
4-Bromofluorobenzene (Surr)	114		72 - 124		09/13/23 22:29	1
Dibromofluoromethane	103		75 - 120		09/13/23 22:29	1
1,2-Dichloroethane-d4 (Surr)	98		75 - 126		09/13/23 22:29	1
Toluene-d8 (Surr)	92		75 - 120		09/13/23 22:29	1

Lab Sample ID: LCS 500-732186/4
Matrix: Water
Analysis Batch: 732186

Client Sample ID: Lab Control Sample
Prep Type: Total/NA

Analyte	Spike Added	LCS Result	LCS Qualifier	Unit	D	%Rec	%Rec Limits
Chloroethane	50.0	65.9		ug/L		132	48 - 136
Chloroform	50.0	47.9		ug/L		96	70 - 120
Chloromethane	50.0	60.8		ug/L		122	56 - 152
cis-1,2-Dichloroethene	50.0	49.8		ug/L		100	70 - 125
1,1-Dichloroethane	50.0	51.4		ug/L		103	70 - 125
1,2-Dichloroethane	50.0	49.4		ug/L		99	68 - 127
1,1-Dichloroethene	50.0	49.4		ug/L		99	67 - 122
Methylene Chloride	50.0	48.9		ug/L		98	69 - 125
Tetrachloroethene	50.0	45.9		ug/L		92	70 - 128
trans-1,2-Dichloroethene	50.0	50.7		ug/L		101	70 - 125
1,1,1-Trichloroethane	50.0	49.6		ug/L		99	70 - 125
1,1,2-Trichloroethane	50.0	50.0		ug/L		100	71 - 130
Trichloroethene	50.0	49.3		ug/L		99	70 - 125
Vinyl chloride	50.0	61.8		ug/L		124	64 - 126

Surrogate	LCS	LCS	Limits
	%Recovery	Qualifier	
4-Bromofluorobenzene (Surr)	109		72 - 124
Dibromofluoromethane	95		75 - 120
1,2-Dichloroethane-d4 (Surr)	92		75 - 126
Toluene-d8 (Surr)	94		75 - 120

Eurofins Chicago

QC Sample Results

Client: KPRG and Associates, Inc.
 Project/Site: Former Bask Dry Cleaners #10009

Job ID: 500-239224-1

Method: 8260D - Volatile Organic Compounds by GC/MS

Lab Sample ID: 500-239224-1 MS
Matrix: Water
Analysis Batch: 732186

Client Sample ID: MW-21
Prep Type: Total/NA

Analyte	Sample	Sample	Spike	MS	MS	Unit	D	%Rec	%Rec	Limits
	Result	Qualifier	Added	Result	Qualifier					
Carbon tetrachloride	<0.38		50.0	49.6		ug/L		99	59 - 133	
Chloroethane	<0.51		50.0	55.2		ug/L		110	48 - 136	
Chloroform	<0.37		50.0	43.8		ug/L		88	70 - 120	
Chloromethane	<0.32		50.0	51.0		ug/L		102	56 - 152	
cis-1,2-Dichloroethene	<0.41		50.0	45.3		ug/L		91	70 - 125	
1,1-Dichloroethane	<0.41		50.0	46.8		ug/L		94	70 - 125	
1,2-Dichloroethane	<0.39		50.0	44.0		ug/L		88	68 - 127	
1,1-Dichloroethene	<0.39		50.0	44.8		ug/L		90	67 - 122	
Methylene Chloride	<1.6		50.0	45.0		ug/L		90	69 - 125	
Tetrachloroethene	<0.37		50.0	40.7		ug/L		81	70 - 128	
trans-1,2-Dichloroethene	<0.35		50.0	45.8		ug/L		92	70 - 125	
1,1,1-Trichloroethane	<0.38		50.0	44.5		ug/L		89	70 - 125	
1,1,2-Trichloroethane	<0.35		50.0	45.2		ug/L		90	71 - 130	
Trichloroethene	<0.16		50.0	43.7		ug/L		87	70 - 125	
Vinyl chloride	<0.20		50.0	45.9		ug/L		92	64 - 126	
		MS MS								
Surrogate	%Recovery	Qualifier	Limits							
4-Bromofluorobenzene (Surr)	108		72 - 124							
Dibromofluoromethane	98		75 - 120							
1,2-Dichloroethane-d4 (Surr)	92		75 - 126							
Toluene-d8 (Surr)	94		75 - 120							

Lab Sample ID: 500-239224-1 MSD
Matrix: Water
Analysis Batch: 732186

Client Sample ID: MW-21
Prep Type: Total/NA

Analyte	Sample	Sample	Spike	MSD	MSD	Unit	D	%Rec	%Rec	Limits	RPD	RPD
	Result	Qualifier	Added	Result	Qualifier							
Carbon tetrachloride	<0.38		50.0	56.3		ug/L		113	59 - 133	13	20	
Chloroethane	<0.51		50.0	61.7		ug/L		123	48 - 136	11	20	
Chloroform	<0.37		50.0	49.6		ug/L		99	70 - 120	13	20	
Chloromethane	<0.32		50.0	56.9		ug/L		114	56 - 152	11	20	
cis-1,2-Dichloroethene	<0.41		50.0	51.5		ug/L		103	70 - 125	13	20	
1,1-Dichloroethane	<0.41		50.0	52.9		ug/L		106	70 - 125	12	20	
1,2-Dichloroethane	<0.39		50.0	49.6		ug/L		99	68 - 127	12	20	
1,1-Dichloroethene	<0.39		50.0	50.2		ug/L		100	67 - 122	11	20	
Methylene Chloride	<1.6		50.0	52.2		ug/L		104	69 - 125	15	20	
Tetrachloroethene	<0.37		50.0	44.8		ug/L		90	70 - 128	10	20	
trans-1,2-Dichloroethene	<0.35		50.0	51.7		ug/L		103	70 - 125	12	20	
1,1,1-Trichloroethane	<0.38		50.0	50.0		ug/L		100	70 - 125	12	20	
1,1,2-Trichloroethane	<0.35		50.0	50.4		ug/L		101	71 - 130	11	20	
Trichloroethene	<0.16		50.0	49.5		ug/L		99	70 - 125	13	20	
Vinyl chloride	<0.20		50.0	54.8		ug/L		110	64 - 126	18	20	
		MSD MSD										
Surrogate	%Recovery	Qualifier	Limits									
4-Bromofluorobenzene (Surr)	110		72 - 124									
Dibromofluoromethane	99		75 - 120									
1,2-Dichloroethane-d4 (Surr)	92		75 - 126									
Toluene-d8 (Surr)	92		75 - 120									

Eurofins Chicago

QC Sample Results

Client: KPRG and Associates, Inc.
 Project/Site: Former Bask Dry Cleaners #10009

Job ID: 500-239224-1

Method: 8260D - Volatile Organic Compounds by GC/MS

Lab Sample ID: MB 500-732217/6
Matrix: Water
Analysis Batch: 732217

Client Sample ID: Method Blank
Prep Type: Total/NA

Analyte	MB	MB	RL	MDL	Unit	D	Prepared	Analyzed	Dil Fac
	Result	Qualifier							
Carbon tetrachloride	<0.38		1.0	0.38	ug/L			09/14/23 10:17	1
Chloroethane	<0.51		1.0	0.51	ug/L			09/14/23 10:17	1
Chloroform	<0.37		2.0	0.37	ug/L			09/14/23 10:17	1
Chloromethane	<0.32		5.0	0.32	ug/L			09/14/23 10:17	1
cis-1,2-Dichloroethene	<0.41		1.0	0.41	ug/L			09/14/23 10:17	1
1,1-Dichloroethane	<0.41		1.0	0.41	ug/L			09/14/23 10:17	1
1,2-Dichloroethane	<0.39		1.0	0.39	ug/L			09/14/23 10:17	1
1,1-Dichloroethene	<0.39		1.0	0.39	ug/L			09/14/23 10:17	1
Methylene Chloride	<1.6		5.0	1.6	ug/L			09/14/23 10:17	1
Tetrachloroethene	<0.37		1.0	0.37	ug/L			09/14/23 10:17	1
trans-1,2-Dichloroethene	<0.35		1.0	0.35	ug/L			09/14/23 10:17	1
1,1,1-Trichloroethane	<0.38		1.0	0.38	ug/L			09/14/23 10:17	1
1,1,2-Trichloroethane	<0.35		1.0	0.35	ug/L			09/14/23 10:17	1
Trichloroethene	<0.16		0.50	0.16	ug/L			09/14/23 10:17	1
Vinyl chloride	<0.20		1.0	0.20	ug/L			09/14/23 10:17	1

Surrogate	MB	MB	Limits	Prepared	Analyzed	Dil Fac
	%Recovery	Qualifier				
4-Bromofluorobenzene (Surr)	111		72 - 124		09/14/23 10:17	1
Dibromofluoromethane	101		75 - 120		09/14/23 10:17	1
1,2-Dichloroethane-d4 (Surr)	97		75 - 126		09/14/23 10:17	1
Toluene-d8 (Surr)	91		75 - 120		09/14/23 10:17	1

Lab Sample ID: LCS 500-732217/4
Matrix: Water
Analysis Batch: 732217

Client Sample ID: Lab Control Sample
Prep Type: Total/NA

Analyte	Spike Added	LCS	LCS	Unit	D	%Rec	%Rec Limits
		Result	Qualifier				
Carbon tetrachloride	50.0	50.9		ug/L		102	59 - 133
Chloroethane	50.0	58.5		ug/L		117	48 - 136
Chloroform	50.0	44.8		ug/L		90	70 - 120
Chloromethane	50.0	55.9		ug/L		112	56 - 152
cis-1,2-Dichloroethene	50.0	46.7		ug/L		93	70 - 125
1,1-Dichloroethane	50.0	48.2		ug/L		96	70 - 125
1,2-Dichloroethane	50.0	46.3		ug/L		93	68 - 127
1,1-Dichloroethene	50.0	44.7		ug/L		89	67 - 122
Methylene Chloride	50.0	45.6		ug/L		91	69 - 125
Tetrachloroethene	50.0	43.1		ug/L		86	70 - 128
trans-1,2-Dichloroethene	50.0	47.0		ug/L		94	70 - 125
1,1,1-Trichloroethane	50.0	45.8		ug/L		92	70 - 125
1,1,2-Trichloroethane	50.0	45.6		ug/L		91	71 - 130
Trichloroethene	50.0	45.9		ug/L		92	70 - 125
Vinyl chloride	50.0	53.5		ug/L		107	64 - 126

Surrogate	LCS	LCS	Limits
	%Recovery	Qualifier	
4-Bromofluorobenzene (Surr)	106		72 - 124
Dibromofluoromethane	96		75 - 120
1,2-Dichloroethane-d4 (Surr)	93		75 - 126
Toluene-d8 (Surr)	94		75 - 120

Eurofins Chicago

Eurofins Chicago

2417 Bond Street
University Park IL 60484
Phone 708-534-5200 Fax 708-534 5211

Chain of Custody Record

MKE 232

eurofins

Client Information		Sampler Kaelyn Sperle		Lab PM Mockler Diana J		Carrier Tracking No(s)		COC No. 500-115662-47544 1	
Client Contact Mr Rich Gnat		Phone 262-278-1621		E-Mail Diana.Mockler@et.eurofins.us.com		State of origin WI		Page Page 1 of 3	
Company KPRG and Associates Inc		Address 14665 West Lisbon Road Suite 1A		City Brookfield		State Zip WI 53005		Phone 262 781-0475(Tel)	
Email richardg@kprginc.com		Project Name KPRG Former Bask Dry Cleaners 10009		Site		Analysis Requested		Job # 500-239224	
Due Date Requested Standard		TAT Requested (days) Standard		Compliance Project: <input type="checkbox"/> Yes <input type="checkbox"/> No		PO #		Purchase Order not required	
500-239224 COC		WV #		Project # 50006629		SSOW#		Preservation Codes	
Sample Identification		Sample Date	Sample Time	Sample Type (C=comp, G=grab)	Matrix (W=water, S=solid, O=waste/soil, BT=Tissue, A-Air)	Field Filtered Sample (Yes or No)	Perform MS/MSD (Yes or No)	Total Number of Containers	
								Special Instructions/Note	
1	MW-21	9/5/23	0937	G	Water	X	X	3	
2	MW-23	9/5/23	1009		Water				
3	MW-22	9/5/23	1045		Water				
4	MW-20	9/5/23	1121		Water				
5	MW-19	9/5/23	1154		Water				
6	MW-15	9/5/23	1231		Water				
7	MW-17	9/5/23	1313		Water				
8	MW-18	9/5/23	1351		Water				
9	MW-24	9/5/23	1422		Water				
10	MW-14	9/5/23	1457		Water				
11	MW-10	9/5/23	1542		Water				
Possible Hazard Identification					Sample Disposal (A fee may be assessed if samples are retained longer than 1 month)				
<input checked="" type="checkbox"/> Non-Hazard <input type="checkbox"/> Flammable <input type="checkbox"/> Skin Irritant <input type="checkbox"/> Poison B <input type="checkbox"/> Unknown <input type="checkbox"/> Radiological					<input type="checkbox"/> Return To Client <input checked="" type="checkbox"/> Disposal By Lab <input type="checkbox"/> Archive For _____ Months				
Deliverable Requested I II III IV Other (specify)					Special Instructions/QC Requirements.				
Empty Kit Relinquished by		Date		Time		Method of Shipment			
Relinquished by <i>Kaelyn Sperle</i>		Date/Time 9/7/23/1149		Company KPRG		Received by <i>DAER</i>		Date/Time 9/7/23 11:49	
Relinquished by <i>Rich</i>		Date/Time 9-7-23 1700		Company Eurofins		Received by <i>Rich</i>		Date/Time 9/8/23 0945	
Relinquished by		Date/Time		Company		Received by		Date/Time	
Custody Seals Intact <input type="checkbox"/> Yes <input type="checkbox"/> No		Custody Seal No		Cooler Temperature(s) and Other Remarks 3.1 → 2.0					

Eurofins Chicago

2417 Bond Street
University Park IL 60484
Phone 708-534-5200 Fax 708-534-5211

Chain of Custody Record

MKE 232 eurofins

Client Information			Sampler Kaelyn Sperle		Lab PM Mockler Diana J		Carrier Tracking No(s)		COC No 500-115662-47544 2													
Client Contact Mr Rich Gnat			Phone 262-278-1621		E Mail Diana.Mockler@et.eurofinsus.com		State of Origin WI		Page Page 2 of 3													
Company KPRG and Associates Inc			PW#ID		Analysis Requested					Job # 500-239224												
Address 14665 West Lisbon Road Suite 1A			Due Date Requested Standard		Field Filtered Sample (Yes or No) Perform MS/MSD (Yes or No) CVOCs					Preservation Codes												
City Brookfield			TAT Requested (days) Standard							Preservation Codes												
State Zip WI 53005			Compliance Project. <input type="checkbox"/> Yes <input type="checkbox"/> No							Preservation Codes												
Phone 262-781-0475(Tel)			PO # Purchase Order not required							Preservation Codes												
Email rchargd@kprginc.com			"VO #"							Preservation Codes												
Project Name KPRG Former Bask Dry Cleaners 10009			Project # 50006629							Preservation Codes												
Site			SSOW#		Total Number of Containers		A HCL M Hexane B NaOH N None C Zn Acetate O AsNaO2 D Nitric Acid P Na2O4S E NaHSO4 Q Na2SO3 F MeOH R Na2S2O3 G Amchlor S H2SO4 H Ascorbic Acid T T6P Dodecahydrate I Ice U Acetone J DI Water V MCAA K EDTA W pH 4-5 L EDA Y Tizma Z other (specify) Other															
Sample Identification			Sample Date		Sample Time						Sample Type (C=Comp, G=grab)		Matrix (W=water, S=solid, O=waste/oil, BT=Tissue, A=Air)		Field Filtered Sample (Yes or No)		Perform MS/MSD (Yes or No)		Total Number of Containers		Special Instructions/Note	
12 MW-13			9/6/23		0929						G		Water		N N X		A		3			
13 MW-8			9/6/23		1003								Water									
14 MW-3			9/6/23		1038								Water									
15 MW-5			9/6/23		1115								Water									
16 MW-7			9/6/23		1149								Water									
17 MW-12			9/6/23		1235								Water									
18 MW-11			9/6/23		1304								Water									
19 MW-9			9/6/23		1339								Water									
20 MW-16			9/6/23		1413				Water													
21 PZ-1			9/6/23		1456				Water													
22 MW-4			9/6/23		1512				Water													
Possible Hazard Identification					Sample Disposal (A fee may be assessed if samples are retained longer than 1 month)																	
<input checked="" type="checkbox"/> Non-Hazard <input type="checkbox"/> Flammable <input type="checkbox"/> Skin Irritant <input type="checkbox"/> Poison B <input type="checkbox"/> Unknown <input type="checkbox"/> Radiological					<input type="checkbox"/> Return To Client <input checked="" type="checkbox"/> Disposal By Lab <input type="checkbox"/> Archive For _____ Months																	
Deliverable Requested I II III IV Other (specify)					Special Instructions/QC Requirements																	
Empty Kit Relinquished by			Date		Time		Method of Shipment															
Relinquished by <i>Kaelyn Sperle</i>			Date/Time 9/7/23/1149		Company KPRG		Received by ER		Date/Time 9/7/23 1150		Company Eurofins											
Relinquished by <i>[Signature]</i>			Date/Time 9-7-23 1700		Company Eurofins		Received by <i>[Signature]</i>		Date/Time 9/9/23 0945		Company Eurofins											
Relinquished by			Date/Time		Company		Received by		Date/Time		Company											
Custody Seals Intact <input type="checkbox"/> Yes <input type="checkbox"/> No		Custody Seal No		Cooler Temperature(s) °C and Other Remarks																		

Login Sample Receipt Checklist

Client: KPRG and Associates, Inc.

Job Number: 500-239224-1

Login Number: 239224

List Number: 1

Creator: Scott, Sherri L

List Source: Eurofins Chicago

Question	Answer	Comment
Radioactivity wasn't checked or is </= background as measured by a survey meter.	True	
The cooler's custody seal, if present, is intact.	True	
Sample custody seals, if present, are intact.	True	
The cooler or samples do not appear to have been compromised or tampered with.	True	
Samples were received on ice.	True	
Cooler Temperature is acceptable.	True	
Cooler Temperature is recorded.	True	2.0
COC is present.	True	
COC is filled out in ink and legible.	True	
COC is filled out with all pertinent information.	True	
Is the Field Sampler's name present on COC?	True	
There are no discrepancies between the containers received and the COC.	True	
Samples are received within Holding Time (excluding tests with immediate HTs)	True	
Sample containers have legible labels.	True	
Containers are not broken or leaking.	True	
Sample collection date/times are provided.	True	
Appropriate sample containers are used.	True	
Sample bottles are completely filled.	True	
Sample Preservation Verified.	True	
There is sufficient vol. for all requested analyses, incl. any requested MS/MSDs	True	
Containers requiring zero headspace have no headspace or bubble is <6mm (1/4").	True	
Multiphasic samples are not present.	True	
Samples do not require splitting or compositing.	True	
Residual Chlorine Checked.	N/A	

Lab Chronicle

Client: KPRG and Associates, Inc.
Project/Site: Former Bask Dry Cleaners #10009

Job ID: 500-239224-1

Client Sample ID: MW-21

Date Collected: 09/05/23 09:37

Date Received: 09/08/23 09:45

Lab Sample ID: 500-239224-1

Matrix: Water

Prep Type	Batch Type	Batch Method	Run	Dilution Factor	Batch Number	Analyst	Lab	Prepared or Analyzed
Total/NA	Analysis	8260D		1	732186	EA	EET CHI	09/14/23 01:22

Client Sample ID: MW-23

Date Collected: 09/05/23 10:09

Date Received: 09/08/23 09:45

Lab Sample ID: 500-239224-2

Matrix: Water

Prep Type	Batch Type	Batch Method	Run	Dilution Factor	Batch Number	Analyst	Lab	Prepared or Analyzed
Total/NA	Analysis	8260D		1	732186	EA	EET CHI	09/14/23 01:46

Client Sample ID: MW-22

Date Collected: 09/05/23 10:45

Date Received: 09/08/23 09:45

Lab Sample ID: 500-239224-3

Matrix: Water

Prep Type	Batch Type	Batch Method	Run	Dilution Factor	Batch Number	Analyst	Lab	Prepared or Analyzed
Total/NA	Analysis	8260D		1	732186	EA	EET CHI	09/14/23 02:10

Client Sample ID: MW-20

Date Collected: 09/05/23 11:21

Date Received: 09/08/23 09:45

Lab Sample ID: 500-239224-4

Matrix: Water

Prep Type	Batch Type	Batch Method	Run	Dilution Factor	Batch Number	Analyst	Lab	Prepared or Analyzed
Total/NA	Analysis	8260D		1	732186	EA	EET CHI	09/14/23 02:34

Client Sample ID: MW-19

Date Collected: 09/05/23 11:54

Date Received: 09/08/23 09:45

Lab Sample ID: 500-239224-5

Matrix: Water

Prep Type	Batch Type	Batch Method	Run	Dilution Factor	Batch Number	Analyst	Lab	Prepared or Analyzed
Total/NA	Analysis	8260D		1	732186	EA	EET CHI	09/14/23 02:59

Client Sample ID: MW-15

Date Collected: 09/05/23 12:31

Date Received: 09/08/23 09:45

Lab Sample ID: 500-239224-6

Matrix: Water

Prep Type	Batch Type	Batch Method	Run	Dilution Factor	Batch Number	Analyst	Lab	Prepared or Analyzed
Total/NA	Analysis	8260D		1	732186	EA	EET CHI	09/14/23 03:23

Client Sample ID: MW-17

Date Collected: 09/05/23 13:13

Date Received: 09/08/23 09:45

Lab Sample ID: 500-239224-7

Matrix: Water

Prep Type	Batch Type	Batch Method	Run	Dilution Factor	Batch Number	Analyst	Lab	Prepared or Analyzed
Total/NA	Analysis	8260D		1	732217	W1T	EET CHI	09/14/23 11:53

Eurofins Chicago

Lab Chronicle

Client: KPRG and Associates, Inc.
Project/Site: Former Bask Dry Cleaners #10009

Job ID: 500-239224-1

Client Sample ID: MW-18

Date Collected: 09/05/23 13:51

Date Received: 09/08/23 09:45

Lab Sample ID: 500-239224-8

Matrix: Water

Prep Type	Batch Type	Batch Method	Run	Dilution Factor	Batch Number	Analyst	Lab	Prepared or Analyzed
Total/NA	Analysis	8260D		1	732217	W1T	EET CHI	09/14/23 12:17

Client Sample ID: MW-24

Date Collected: 09/05/23 14:22

Date Received: 09/08/23 09:45

Lab Sample ID: 500-239224-9

Matrix: Water

Prep Type	Batch Type	Batch Method	Run	Dilution Factor	Batch Number	Analyst	Lab	Prepared or Analyzed
Total/NA	Analysis	8260D		1	732186	EA	EET CHI	09/14/23 03:48

Client Sample ID: MW-14

Date Collected: 09/05/23 14:57

Date Received: 09/08/23 09:45

Lab Sample ID: 500-239224-10

Matrix: Water

Prep Type	Batch Type	Batch Method	Run	Dilution Factor	Batch Number	Analyst	Lab	Prepared or Analyzed
Total/NA	Analysis	8260D		1	732186	EA	EET CHI	09/14/23 04:12

Client Sample ID: MW-10

Date Collected: 09/05/23 15:42

Date Received: 09/08/23 09:45

Lab Sample ID: 500-239224-11

Matrix: Water

Prep Type	Batch Type	Batch Method	Run	Dilution Factor	Batch Number	Analyst	Lab	Prepared or Analyzed
Total/NA	Analysis	8260D		1	732186	EA	EET CHI	09/14/23 04:36

Client Sample ID: MW-13

Date Collected: 09/06/23 09:29

Date Received: 09/08/23 09:45

Lab Sample ID: 500-239224-12

Matrix: Water

Prep Type	Batch Type	Batch Method	Run	Dilution Factor	Batch Number	Analyst	Lab	Prepared or Analyzed
Total/NA	Analysis	8260D		1	732186	EA	EET CHI	09/14/23 05:00

Client Sample ID: MW-8

Date Collected: 09/06/23 10:03

Date Received: 09/08/23 09:45

Lab Sample ID: 500-239224-13

Matrix: Water

Prep Type	Batch Type	Batch Method	Run	Dilution Factor	Batch Number	Analyst	Lab	Prepared or Analyzed
Total/NA	Analysis	8260D		1	732217	W1T	EET CHI	09/14/23 12:42

Client Sample ID: MW-3

Date Collected: 09/06/23 10:38

Date Received: 09/08/23 09:45

Lab Sample ID: 500-239224-14

Matrix: Water

Prep Type	Batch Type	Batch Method	Run	Dilution Factor	Batch Number	Analyst	Lab	Prepared or Analyzed
Total/NA	Analysis	8260D		1	732217	W1T	EET CHI	09/14/23 13:06

Lab Chronicle

Client: KPRG and Associates, Inc.
Project/Site: Former Bask Dry Cleaners #10009

Job ID: 500-239224-1

Client Sample ID: MW-5
Date Collected: 09/06/23 11:15
Date Received: 09/08/23 09:45

Lab Sample ID: 500-239224-15
Matrix: Water

Prep Type	Batch Type	Batch Method	Run	Dilution Factor	Batch Number	Analyst	Lab	Prepared or Analyzed
Total/NA	Analysis	8260D		1	732217	W1T	EET CHI	09/14/23 13:30

Client Sample ID: MW-7
Date Collected: 09/06/23 11:49
Date Received: 09/08/23 09:45

Lab Sample ID: 500-239224-16
Matrix: Water

Prep Type	Batch Type	Batch Method	Run	Dilution Factor	Batch Number	Analyst	Lab	Prepared or Analyzed
Total/NA	Analysis	8260D		1	732217	W1T	EET CHI	09/14/23 13:55

Client Sample ID: MW-12
Date Collected: 09/06/23 12:35
Date Received: 09/08/23 09:45

Lab Sample ID: 500-239224-17
Matrix: Water

Prep Type	Batch Type	Batch Method	Run	Dilution Factor	Batch Number	Analyst	Lab	Prepared or Analyzed
Total/NA	Analysis	8260D		1	732217	W1T	EET CHI	09/14/23 14:19

Client Sample ID: MW-11
Date Collected: 09/06/23 13:04
Date Received: 09/08/23 09:45

Lab Sample ID: 500-239224-18
Matrix: Water

Prep Type	Batch Type	Batch Method	Run	Dilution Factor	Batch Number	Analyst	Lab	Prepared or Analyzed
Total/NA	Analysis	8260D		1	732217	W1T	EET CHI	09/14/23 14:43

Client Sample ID: MW-9
Date Collected: 09/06/23 13:39
Date Received: 09/08/23 09:45

Lab Sample ID: 500-239224-19
Matrix: Water

Prep Type	Batch Type	Batch Method	Run	Dilution Factor	Batch Number	Analyst	Lab	Prepared or Analyzed
Total/NA	Analysis	8260D		1	732217	W1T	EET CHI	09/14/23 15:07

Client Sample ID: MW-16
Date Collected: 09/06/23 14:13
Date Received: 09/08/23 09:45

Lab Sample ID: 500-239224-20
Matrix: Water

Prep Type	Batch Type	Batch Method	Run	Dilution Factor	Batch Number	Analyst	Lab	Prepared or Analyzed
Total/NA	Analysis	8260D		1	732217	W1T	EET CHI	09/14/23 15:31

Client Sample ID: PZ-1
Date Collected: 09/06/23 14:56
Date Received: 09/08/23 09:45

Lab Sample ID: 500-239224-21
Matrix: Water

Prep Type	Batch Type	Batch Method	Run	Dilution Factor	Batch Number	Analyst	Lab	Prepared or Analyzed
Total/NA	Analysis	8260D		1	732217	W1T	EET CHI	09/14/23 15:55

Lab Chronicle

Client: KPRG and Associates, Inc.
Project/Site: Former Bask Dry Cleaners #10009

Job ID: 500-239224-1

Client Sample ID: MW-4

Date Collected: 09/06/23 15:12

Date Received: 09/08/23 09:45

Lab Sample ID: 500-239224-22

Matrix: Water

Prep Type	Batch Type	Batch Method	Run	Dilution Factor	Batch Number	Analyst	Lab	Prepared or Analyzed
Total/NA	Analysis	8260D		1	732217	W1T	EET CHI	09/14/23 16:19

Client Sample ID: MW-6

Date Collected: 09/06/23 15:30

Date Received: 09/08/23 09:45

Lab Sample ID: 500-239224-23

Matrix: Water

Prep Type	Batch Type	Batch Method	Run	Dilution Factor	Batch Number	Analyst	Lab	Prepared or Analyzed
Total/NA	Analysis	8260D		1	732217	W1T	EET CHI	09/14/23 16:44

Client Sample ID: Duplicate 1

Date Collected: 09/06/23 00:00

Date Received: 09/08/23 09:45

Lab Sample ID: 500-239224-24

Matrix: Water

Prep Type	Batch Type	Batch Method	Run	Dilution Factor	Batch Number	Analyst	Lab	Prepared or Analyzed
Total/NA	Analysis	8260D		1	732217	W1T	EET CHI	09/14/23 17:08

Client Sample ID: Trip Blank

Date Collected: 09/05/23 00:00

Date Received: 09/08/23 09:45

Lab Sample ID: 500-239224-25

Matrix: Water

Prep Type	Batch Type	Batch Method	Run	Dilution Factor	Batch Number	Analyst	Lab	Prepared or Analyzed
Total/NA	Analysis	8260D		1	732186	EA	EET CHI	09/14/23 00:56

Laboratory References:

EET CHI = Eurofins Chicago, 2417 Bond Street, University Park, IL 60484, TEL (708)534-5200

Accreditation/Certification Summary

Client: KPRG and Associates, Inc.
Project/Site: Former Bask Dry Cleaners #10009

Job ID: 500-239224-1

Laboratory: Eurofins Chicago

The accreditations/certifications listed below are applicable to this report.

Authority	Program	Identification Number	Expiration Date
Wisconsin	State	999580010	08-31-23 *

- 1
- 2
- 3
- 4
- 5
- 6
- 7
- 8
- 9
- 10
- 11
- 12
- 13
- 14

* Accreditation/Certification renewal pending - accreditation/certification considered valid.