



ENVIRONMENTAL CONSULTATION & REMEDIATION

KPRG and Associates, Inc.

**GROUNDWATER DATA TRANSMITTAL**

July 9, 2024

Ms. Hera Hulsey  
Wisconsin Department of Natural Resources  
1027 W St. Paul Ave  
Milwaukee, WI 53233

VIA E-MAIL

KPRG Project No. 27823

Re: Groundwater Data Transmittal  
Former Fabricare - 323 W. Sunset Drive, Waukesha, WI  
BRRTS # 02-68-305374

Dear Ms. Hulsey:

The groundwater sampling discussed in the approved work plan was completed in May 2024 by KPRG and Associates, Inc. (KPRG). The most recent and historic groundwater elevations are summarized in Table 1 and the analytical data from the sampling event are summarized in Table 2. A site map showing all the well locations and the wells sampled highlighted on Figure 1. A groundwater flow map and TCE isoconcentration map are also provided on Figures 2 and 3, respectively. The analytical data package is provided in the Attachment.

Not all of the wells at the site were sampled this round. The wells sampled was the subset in the approved work plan and the addition of wells MW-2 and PZ-1 in the DNR's work plan response letter.

If there are any questions, please contact Josh Davenport or Patrick Allenstein of KPRG at 262-781-0475.

Sincerely,  
KPRG and Associates, Inc.

Joshua Davenport, P.E.  
Senior Engineer

cc: Davis Idrizi

## **FIGURES**



ENVIRONMENTAL CONSULTATION & REMEDIATION

**K P R G**

KPRG and Associates, inc.

14665 West Lisbon Road, Suite 2B Brookfield, Wisconsin 53005 Telephone 262-781-0475 Facsimile 262-781-0478

414 Plaza Drive, Suite 106 Westmont, Illinois 60559 Telephone 630-325-1300 Facsimile 630-325-1593

**PROPOSED MONITORING WELLS TO BE SAMPLED**

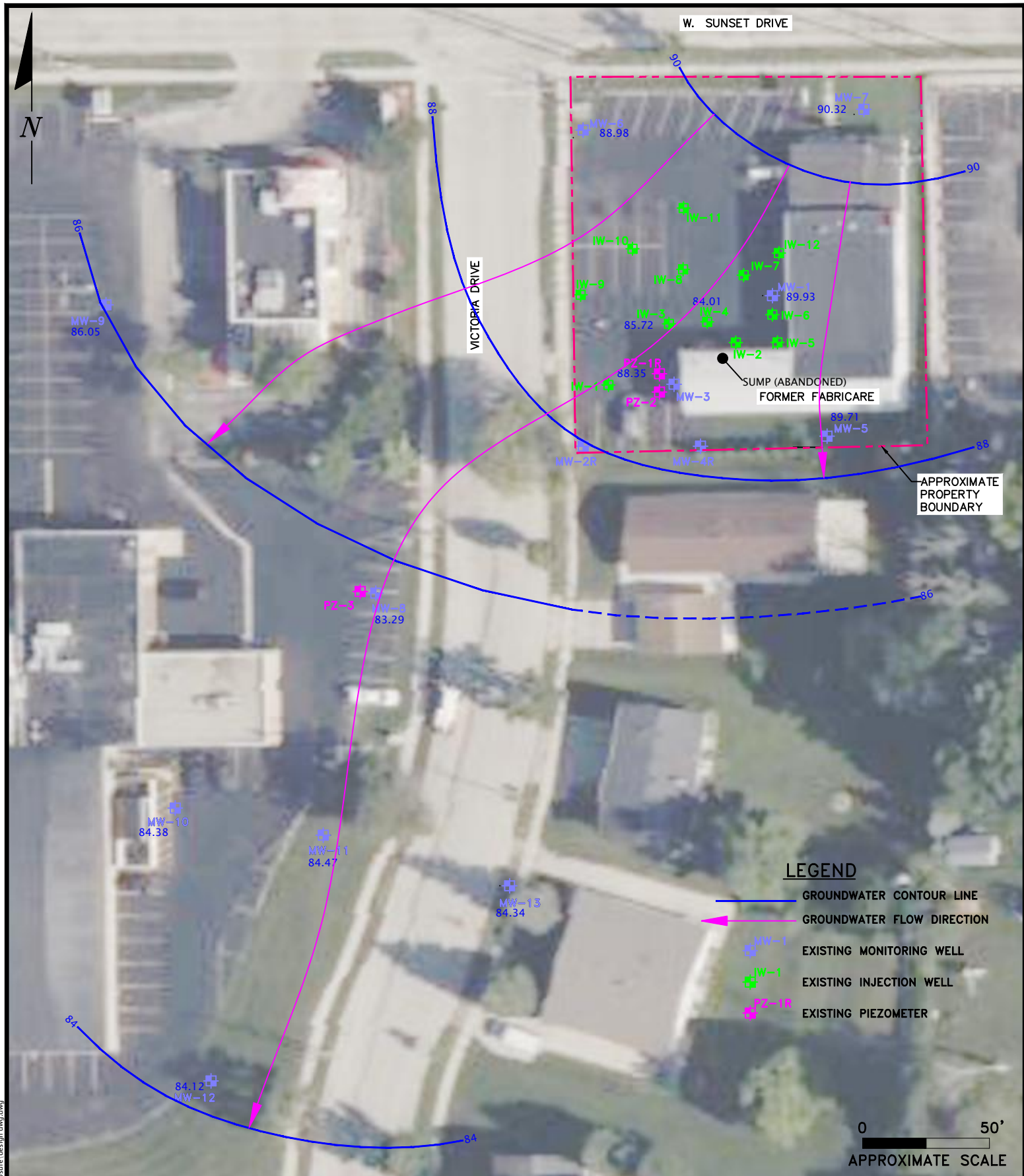
**323 W. SUNSET DR/FORMER FABRICARE  
WAUKESHA, WISCONSIN**

Scale: 1" = 50'

Date: December 2, 2023

KPRG Project No. 27823

FIGURE 1



ENVIRONMENTAL CONSULTATION & REMEDIATION

**K P R G**

KPRG and Associates, inc.

14665 West Lisbon Road, Suite 2B Brookfield, Wisconsin 53005 Telephone 262-781-0475 Facsimile 262-781-0478

414 Plaza Drive, Suite 106 Westmont, Illinois 60559 Telephone 630-325-1300 Facsimile 630-325-1593

**GROUNDWATER CONTOUR MAP 5/13/24**

**323 W. SUNSET DR/FORMER FABRICARE  
WAUKESHA, WISCONSIN**

Scale: 1" = 50'

Date: May 29, 2024

KPRG Project No. 27823

FIGURE 2

T:\projects\midwest\_generation\ash\_pond2\_closure\design.dwg.dwg



ENVIRONMENTAL CONSULTATION & REMEDIATION

**K P R G**

KPRG and Associates, inc.

14665 West Lisbon Road, Suite 1A Brookfield, Wisconsin 53005 Telephone 262-781-0475

414 Plaza Drive, Suite 106 Westmont, Illinois 60559 Telephone 630-325-1300

**GROUNDWATER PCE ISOCONCENTRATION MAP**

**323 W. SUNSET DR/FORMER FABRICARE  
WAUKESHA, WISCONSIN**

Scale: 1" = 50'

Date: May 28, 2024

KPRG Project No. 27823

FIGURE 3

## **TABLES**

Table 1 - Groundwater Elevations  
Former Fabricare - 323 W. Sunset Drive, Waukesha, WI

Well ID	Date	Total Well Depth (Depth to Bottom) (ft from TOC)	Ground Surface Elevation (from local datum)	Top of Casing Elevation (from local datum)	Depth to Water Below Ground (from ground surface)	Depth to Groundwater below TOC (ft below TOC)	Groundwater Elevation (from local datum)
MW-1	4/23/2003	18.71	100.01	99.81	13.99	13.79	86.02
	7/29/2003	18.71	100.01	99.81	13.61	13.41	86.40
	11/20/2003	18.71	100.01	99.81	14.22	14.02	85.79
	6/7/2005	18.71	100.01	99.86	NM	13.40	86.46
	7/26/2005	18.71	100.01	99.86	NM	13.65	86.21
	8/23/2005	18.71	100.01	99.86	NM	13.98	85.88
	9/6/2005	18.71	100.01	99.86	NM	14.17	85.69
	10/18/2005	18.71	100.01	99.86	NM	14.29	85.57
	11/1/2005	18.71	100.01	99.86	NM	14.50	85.36
	4/18/2006	18.71	100.01	99.86	NM	11.92	87.94
	5/2/2006	18.71	100.01	99.86	NM	12.25	87.61
	6/27/2006	18.71	100.01	99.86	NM	12.46	87.40
	12/19/2006	18.71	100.01	99.86	NM	12.65	87.21
	6/21/2007	18.71	100.01	99.86	NM	11.82	88.04
	12/10/2007	18.71	100.01	99.86	NM	13.40	86.46
	3/11/2009	18.71	100.01	99.86	NM	11.02	88.84
	10/16/2009	18.71	100.01	99.86	NM	13.17	86.69
	6/3/2010	18.71	100.01	99.86	NM	11.73	88.13
	12/3/2010	18.71	100.01	99.86	NM	13.30	86.56
	10/2/2023	17.53	100.01	99.86	NM	11.76	88.1
5/13/2024	17.53	100.01	99.86	NM	9.93	89.93	
MW-2/MW-2R	4/23/2003	18.30	99.19	98.98	15.8	15.59	83.39
	7/29/2003	18.30	99.19	98.98	15.48	15.27	83.71
	8/26/2003	18.30	99.19	98.98	16.1	15.89	83.09
	11/20/2003	18.30	99.19	98.98	16.29	16.08	82.90
	6/7/2005	18.30	99.19	98.95	NM	14.89	84.06
	7/26/2005	18.30	99.19	98.95	NM	15.47	83.48
	8/9/2005	18.30	99.19	98.95	NM	15.56	83.39
	8/23/2005	18.30	99.19	98.95	NM	15.69	83.26
	9/6/2005	18.30	99.19	98.95	NM	15.81	83.14
	10/18/2005	18.30	99.19	98.95	NM	16.01	82.94
	11/1/2005	18.30	99.19	98.95	NM	16.19	82.76
	4/18/2006	18.30	99.19	98.95	NM	13.61	85.34
	5/2/2006	18.30	99.19	98.95	NM	13.80	85.15
	6/27/2006	18.30	99.19	98.95	NM	13.76	85.19
	12/19/2006	18.30	99.19	98.95	NM	13.47	85.48
	6/21/2007	18.30	99.19	98.95	NM	12.40	86.55
	12/10/2007	18.30	99.19	98.95	NM	14.02	84.93
	3/11/2009	18.30	99.19	98.95	NM	12.78	86.17
	10/16/2009	18.30	99.19	98.95	NM	13.40	85.55
	6/3/2010	18.30	99.19	98.95	NM	12.47	86.48
12/3/2010	18.30	99.19	98.95	NM	13.59	85.36	
5/13/2024	18.30	99.19	98.95	NM	13.59	85.36	
MW-3	4/23/2003	18.26	99.8	99.8	14.2	14.20	85.60
	7/29/2003	18.26	99.8	99.8	13.83	13.83	85.97
	11/20/2003	18.26	99.8	99.8	14.52	14.52	85.28
	6/7/2005	18.26	99.8	99.8	NM	13.65	86.15
	7/26/2005	18.26	99.8	99.8	NM	14.04	85.76
	8/23/2005	18.26	99.8	99.8	NM	14.32	85.48
	9/6/2005	18.26	99.8	99.8	NM	14.45	85.35
	10/18/2005	18.26	99.8	99.8	NM	14.61	85.19
	11/1/2005	18.26	99.8	99.8	NM	14.91	84.89
	4/18/2006	18.26	99.8	99.8	NM	12.20	87.60
	5/2/2006	18.26	99.8	99.8	NM	12.57	87.23
	6/27/2006	18.26	99.8	99.8	NM	12.77	87.03
	12/19/2006	18.26	99.8	99.8	NM	13.03	86.77
	6/21/2007	18.26	99.8	99.8	NM	12.02	87.78
	12/10/2007	18.26	99.8	99.8	NM	13.65	86.15
	3/11/2009	18.26	99.8	99.8	NM	11.06	88.74
	10/16/2009	18.26	99.8	99.8	NM	13.02	86.78
	6/3/2010	18.26	99.8	99.8	NM	12.05	87.75
12/3/2010	18.26	99.8	99.8	NM	13.53	86.27	

MW-4/MW-4R	4/23/2003	18.14	100.21	100.04	14.5	14.33	85.71
	7/29/2003	18.14	100.21	100.04	14.17	14.00	86.04
	11/20/2003	18.14	100.21	100.04	14.78	14.61	85.43
	6/7/2005	18.14	100.21	100.01	NM	13.79	86.22
	7/26/2005	18.14	100.21	100.01	NM	14.15	85.86
	8/9/2005	18.14	100.21	100.01	NM	14.31	85.70
	8/23/2005	18.14	100.21	100.01	NM	14.42	85.59
	9/6/2005	18.14	100.21	100.01	NM	14.57	85.44
	9/20/2005	18.14	100.21	100.01	NM	14.74	85.27
	10/4/2005	18.14	100.21	100.01	NM	14.28	85.73
	10/18/2005	18.14	100.21	100.01	NM	14.72	85.29
	11/1/2005	18.14	100.21	100.01	NM	14.93	85.08
	4/18/2006	18.14	100.21	100.01	NM	12.25	87.76
	5/2/2006	18.14	100.21	100.01	NM	12.54	87.47
	6/27/2006	18.14	100.21	100.01	NM	12.75	87.26
	12/19/2006	18.14	100.21	100.01	NM	12.95	87.06
	6/21/2007	18.14	100.21	100.01	NM	12.06	87.95
	12/10/2007	18.14	100.21	100.01	NM	13.70	86.31
	3/11/2009	18.14	100.21	100.01	NM	10.99	89.02
	10/16/2009	18.14	100.21	100.01	NM	13.20	86.81
6/3/2010	18.14	100.21	100.01	NM	12.02	87.99	
12/3/2010	18.14	100.21	100.01	NM	13.49	86.52	
5/13/2024	18.14	100.21	100.01	NM	10.72	89.29	
MW-5	7/29/2003	19.59	100.41	100.15	14.37	14.11	86.04
	11/20/2003	19.59	100.41	100.15	15.02	14.76	85.39
	6/7/2005	19.59	100.41	100.17	NM	13.82	86.35
	7/26/2005	19.59	100.41	100.17	NM	14.22	85.95
	8/9/2005	19.59	100.41	100.17	NM	14.38	85.79
	8/23/2005	19.59	100.41	100.17	NM	14.50	85.67
	9/6/2005	19.59	100.41	100.17	NM	14.64	85.53
	10/4/2005	19.59	100.41	100.17	NM	14.37	85.80
	10/18/2005	19.59	100.41	100.17	NM	14.79	85.38
	11/1/2005	19.59	100.41	100.17	NM	15.05	85.12
	4/18/2006	19.59	100.41	100.17	NM	12.31	87.86
	5/2/2006	19.59	100.41	100.17	NM	12.57	87.60
	6/27/2006	19.59	100.41	100.17	NM	12.78	87.39
	12/19/2006	19.59	100.41	100.17	NM	12.98	87.19
	6/21/2007	19.59	100.41	100.17	NM	12.10	88.07
	12/10/2007	19.59	100.41	100.17	NM	13.78	86.39
	10/15/2009	19.59	100.41	100.17	NM	13.23	86.94
6/3/2010	19.59	100.41	100.17	NM	12.01	88.16	
10/2/2023	19.13	100.41	100.17	NM	12.62	87.55	
5/13/2024	19.13	100.41	100.17	NM	10.46	89.71	
MW-6	7/29/2003	19.18	98.33	98.04	12.67	12.38	85.66
	11/20/2003	19.18	98.33	98.04	12.86	12.57	85.47
	6/7/2005	19.18	98.33	98.01	NM	13.06	84.95
	7/26/2005	19.18	98.33	98.01	NM	12.13	85.88
	8/9/2005	19.18	98.33	98.01	NM	12.55	85.46
	8/23/2005	19.18	98.33	98.01	NM	12.49	85.52
	9/6/2005	19.18	98.33	98.01	NM	12.74	85.27
	9/20/2005	19.18	98.33	98.01	NM	12.80	85.21
	10/4/2005	19.18	98.33	98.01	NM	12.21	85.80
	10/18/2005	19.18	98.33	98.01	NM	12.89	85.12
	11/1/2005	19.18	98.33	98.01	NM	13.13	84.88
	4/18/2006	19.18	98.33	98.01	NM	11.09	86.92
	5/2/2006	19.18	98.33	98.01	NM	11.14	86.87
	6/27/2006	19.18	98.33	98.01	NM	11.26	86.75
	12/19/2006	19.18	98.33	98.01	NM	11.48	86.53
	6/21/2007	19.18	98.33	98.01	NM	10.68	87.33
	12/10/2007	19.18	98.33	98.01	NM	12.03	85.98
	10/15/2009	19.18	98.33	98.01	NM	11.60	86.41
	6/3/2010	19.18	98.33	98.01	NM	10.60	87.41
12/3/2010	19.18	98.33	98.01	NM	11.84	86.17	
10/2/2023	19.09	98.33	98.01	NM	11.01	87	
5/13/2024	19.09	98.33	98.01	NM	9.03	88.98	



MW-7	7/29/2003	18.91	99.79	99.56	12.00	11.77	87.79
	11/20/2003	18.91	99.79	99.56	11.58	11.35	88.21
	6/7/2005	18.91	99.79	99.55	NM	12.95	86.60
	7/26/2005	18.91	99.79	99.55	NM	10.93	88.62
	8/9/2005	18.91	99.79	99.55	NM	11.97	87.58
	8/23/2005	18.91	99.79	99.55	NM	11.65	87.90
	9/6/2005	18.91	99.79	99.55	NM	12.19	87.36
	9/20/2005	18.91	99.79	99.55	NM	12.02	87.53
	10/4/2005	18.91	99.79	99.55	NM	11.44	88.11
	10/18/2005	18.91	99.79	99.55	NM	12.32	87.23
	11/1/2005	18.91	99.79	99.55	NM	12.53	87.02
	4/18/2006	18.91	99.79	99.55	NM	10.36	89.19
	5/2/2006	18.91	99.79	99.55	NM	10.28	89.27
	6/27/2006	18.91	99.79	99.55	NM	10.82	88.73
	12/19/2006	18.91	99.79	99.55	NM	10.84	88.71
	6/21/2007	18.91	99.79	99.55	NM	10.50	89.05
	12/10/2007	18.91	99.79	99.55	NM	11.62	87.93
	10/15/2009	18.91	99.79	99.55	NM	11.41	88.14
	6/3/2010	18.91	99.79	99.55	NM	9.32	90.23
	12/3/2010	18.91	99.79	99.55	NM	11.42	88.13
10/2/2023	19.35	99.79	99.55	NM	10.44	89.11	
5/13/2024	19.35	99.79	99.55	NM	9.23	90.32	
MW-8	7/29/2003	19.75	99.71	99.49	18.08	17.86	81.63
	8/26/2003	19.75	99.71	99.49	18.41	18.19	81.30
	11/20/2003	19.75	99.71	99.49	18.83	18.61	80.88
	6/7/2005	19.75	99.71	99.53	NM	17.71	81.82
	12/19/2006	19.75	99.71	99.53	NM	17.00	82.53
	6/21/2007	19.75	99.71	99.53	NM	15.30	84.23
	12/11/2007	19.75	99.71	99.53	NM	16.40	83.13
	3/11/2009	19.75	99.71	99.53	NM	15.06	84.47
	6/3/2010	19.75	99.71	99.53	NM	15.20	84.33
	12/3/2010	19.75	99.71	99.53	NM	15.60	83.93
	5/13/2024	19.75	99.71	97.78	NM	14.49	83.29
MW-9	7/29/2003	19.46	97.87	97.61	15.26	15.00	82.61
	11/20/2003	19.46	97.87	97.61	15.94	15.68	81.93
	6/7/2005	19.46	97.87	97.61	NM	12.44	85.17
	6/27/2006	19.46	97.87	97.61	NM	13.37	84.24
	12/19/2006	19.46	97.87	97.61	NM	13.87	83.74
	6/21/2007	19.46	97.87	97.61	NM	12.50	85.11
	12/11/2007	19.46	97.87	97.61	NM	13.61	84.00
	10/15/2009	19.46	97.87	97.61	NM	13.03	84.58
	6/3/2010	19.46	97.87	97.61	NM	12.51	85.10
	12/3/2010	19.46	97.87	97.61	NM	13.15	84.46
	5/13/2024	19.46	97.87	97.61	NM	11.56	86.05
MW-10	8/26/2003	20.39	101.1	100.74	20.02	19.66	81.08
	11/20/2003	20.39	101.1	100.74	20.45	20.09	80.65
	6/7/2005	20.39	101.1	100.74	NM	18.92	81.82
	6/27/2006	20.39	101.1	100.74	NM	18.48	82.26
	12/19/2006	20.39	101.1	100.74	NM	18.45	82.29
	6/21/2007	20.39	101.1	100.74	NM	16.75	83.99
	12/11/2007	20.39	101.1	100.74	NM	17.80	82.94
	10/15/2009	20.39	101.1	100.74	NM	17.12	83.62
	6/3/2010	20.39	101.1	100.74	NM	16.92	83.82
	12/3/2010	20.39	101.1	100.74	NM	17.13	83.61
	10/2/2023	20.25	101.1	100.74	NM	18.22	82.52
5/13/2024	20.25	101.1	100.74	NM	16.36	84.38	
MW-11	8/26/2003	23.95	101.49	101.27	20.46	20.24	81.03
	11/20/2003	23.95	101.49	101.27	20.97	20.75	80.52
	6/7/2005	23.95	101.49	101.27	NM	19.51	81.76
	12/19/2006	23.95	101.49	101.27	NM	19.07	82.20
	6/21/2007	23.95	101.49	101.27	NM	17.30	83.97
	12/11/2007	23.95	101.49	101.27	NM	18.36	82.91
	10/15/2009	23.95	101.49	101.27	NM	17.65	83.62
	6/3/2010	23.95	101.49	101.27	NM	17.46	83.81
	12/3/2010	23.95	101.49	101.27	NM	17.65	83.62
10/2/2023	23.80	101.49	101.27	NM	18.70	82.57	
5/13/2024	23.80	101.49	101.27	NM	16.80	84.47	

MW-12	11/20/2003	26.81	103.34	103.03	23.10	22.79	80.24
	6/7/2005	26.81	103.34	103.02	NM	21.56	81.46
	6/27/2006	26.81	103.34	103.02	NM	21.19	81.83
	12/19/2006	26.81	103.34	103.02	NM	21.13	81.89
	6/21/2007	26.81	103.34	103.02	NM	19.36	83.66
	12/11/2007	26.81	103.34	103.02	NM	20.40	82.62
	10/15/2009	26.81	103.34	103.02	NM	19.70	83.32
	6/3/2010	26.81	103.34	103.02	NM	19.53	83.49
	12/3/2010	26.81	103.34	103.02	NM	19.64	83.38
	10/2/2023	26.61	103.34	103.02	NM	20.84	82.18
5/13/2024	26.61	103.34	103.02	NM	18.9	84.12	
MW-13	11/20/2003	24.86	102.87	102.47	22.12	22.52	79.95
	6/27/2006	24.86	102.87	102.47	NM	20.86	81.61
	12/19/2006	24.86	102.87	102.47	NM	20.47	82.00
	6/21/2007	24.86	102.87	102.47	NM	20.45	82.02
	10/15/2009	24.86	102.87	102.47	NM	18.95	83.52
	6/3/2010	24.86	102.87	102.47	NM	18.78	83.69
	12/3/2010	24.86	102.87	102.47	NM	18.92	83.55
	10/2/2023	24.52	102.87	102.47	NM	20.09	82.38
5/13/2024	24.52	102.87	102.47	NM	18.13	84.34	
PZ-1R	8/26/2003	33.28	99.79	99.49	15.12	14.82	84.67
	11/20/2003	33.28	99.79	99.49	15.37	15.07	84.42
	6/7/2005	33.28	99.79	99.49	NM	13.99	85.50
	9/6/2005	33.28	99.79	99.49	NM	14.44	85.05
	9/20/2005	33.28	99.79	99.49	NM	14.83	84.66
	10/4/2005	33.28	99.79	99.49	NM	14.67	84.82
	10/18/2005	33.28	99.79	99.49	NM	14.82	84.67
	11/1/2005	33.28	99.79	99.49	NM	15.11	84.38
	12/19/2006	33.28	99.79	99.49	NM	13.39	86.10
	6/21/2007	33.28	99.79	99.49	NM	12.33	87.16
	12/10/2007	33.28	99.79	99.49	NM	13.55	85.94
	3/11/2009	33.28	99.79	99.49	NM	12.19	87.30
	10/15/2009	33.28	99.79	99.49	NM	12.50	86.99
	6/3/2010	33.28	99.79	99.49	NM	12.31	87.18
	12/3/2010	33.28	99.79	99.49	NM	13.16	86.33
10/2/2023	33.65	99.79	99.49	NM	12.78	86.71	
5/13/2024	33.65	99.79	99.49	NM	11.14	88.35	
PZ-2	6/7/2005	51.00	NM	99.25	NM	13.61	85.64
	9/6/2005	51.00	NM	99.25	NM	14.70	84.55
	9/20/2005	51.00	NM	99.25	NM	14.39	84.86
	10/4/2005	51.00	NM	99.25	NM	14.32	84.93
	10/18/2005	51.00	NM	99.25	NM	14.52	84.73
	11/1/2005	51.00	NM	99.25	NM	14.77	84.48
	12/19/2006	51.00	NM	99.25	NM	12.92	86.33
	6/21/2007	51.00	NM	99.25	NM	11.91	87.34
10/2/2023	39.92	NM	99.25	NM	11.99	87.26	
PZ-3	6/7/2005	33.00	NM	99.23	NM	17.06	82.17
	12/19/2006	33.00	NM	99.23	NM	16.59	82.64
	6/21/2007	33.00	NM	99.23	NM	14.92	84.31
	12/11/2007	33.00	NM	99.23	NM	16.01	83.22
	10/15/2009	33.00	NM	99.23	NM	15.35	83.88
	6/3/2010	33.00	NM	99.23	NM	15.08	84.15
	10/2/2023	33.33	NM	99.23	NM	16.27	82.96
IW-1	6/7/2005	17.95	NM	98.8	NM	12.87	85.93
	7/12/2005	17.95	NM	98.8	NM	13.32	85.48
	7/26/2005	17.95	NM	98.8	NM	13.30	85.50
	8/23/2005	17.95	NM	98.8	NM	13.55	85.25
	9/6/2005	17.95	NM	98.8	NM	13.68	85.12
	9/20/2005	17.95	NM	98.8	NM	13.84	84.96
	10/4/2005	17.95	NM	98.8	NM	13.46	85.34
	10/18/2005	17.95	NM	98.8	NM	13.85	84.95
	11/1/2005	17.93	NM	98.8	NM	14.12	84.68
	4/18/2006	17.93	NM	98.8	NM	11.67	87.13
	5/2/2006	17.93	NM	98.8	NM	11.99	86.81
	12/19/2006	17.93	NM	98.8	NM	12.41	86.39
	6/21/2007	17.93	NM	98.8	NM	11.33	87.47
	12/10/2007	17.93	NM	98.8	NM	12.95	85.85
	3/11/2009	17.93	NM	98.8	NM	10.70	88.10
	10/15/2009	17.93	NM	98.8	NM	12.46	86.34
	6/3/2010	17.93	NM	98.8	NM	11.41	87.39
12/3/2010	17.93	NM	98.8	NM	12.81	85.99	
10/2/2023	17.81	NM	98.8	NM	12.12	86.68	

IW-2	6/7/2005	17.95	NM	98.84	NM	12.66	86.18
	7/12/2005	17.95	NM	98.84	NM	13.09	85.75
	7/26/2005	17.95	NM	98.84	NM	13.02	85.82
	8/23/2005	17.95	NM	98.84	NM	13.27	85.57
	9/6/2005	17.95	NM	98.84	NM	13.42	85.42
	9/20/2005	17.95	NM	98.84	NM	13.59	85.25
	10/4/2005	17.95	NM	98.84	NM	13.15	85.69
	10/18/2005	17.95	NM	98.84	NM	13.60	85.24
	11/1/2005	17.93	NM	98.84	NM	13.86	84.98
	4/18/2006	17.93	NM	98.84	NM	11.46	87.38
	5/2/2006	17.93	NM	98.84	NM	11.76	87.08
	6/27/2006	17.93	NM	98.84	NM	11.90	86.94
	12/19/2006	17.93	NM	98.84	NM	12.19	86.65
	6/21/2007	17.93	NM	98.84	NM	11.24	87.60
	12/10/2007	17.93	NM	98.84	NM	12.86	85.98
	3/11/2009	17.93	NM	98.84	NM	10.52	88.32
	10/16/2009	17.93	NM	98.84	NM	12.41	86.43
	6/4/2010	17.93	NM	98.84	NM	11.35	87.49
12/3/2010	17.93	NM	98.84	NM	12.80	86.04	
IW-3	6/7/2005	17.80	NM	99.35	NM	13.07	86.28
	7/12/2005	17.80	NM	99.35	NM	13.51	85.84
	7/26/2005	17.80	NM	99.35	NM	13.41	85.94
	8/23/2005	17.80	NM	99.35	NM	13.72	85.63
	9/6/2005	17.80	NM	99.35	NM	13.87	85.48
	9/20/2005	17.80	NM	99.35	NM	14.04	85.31
	10/4/2005	17.80	NM	99.35	NM	13.58	85.77
	10/18/2005	17.80	NM	99.35	NM	14.03	85.32
	11/1/2005	17.55	NM	99.35	NM	14.29	85.06
	4/18/2006	17.55	NM	99.35	NM	11.75	87.60
	5/2/2006	17.55	NM	99.35	NM	12.07	87.28
	6/27/2006	17.55	NM	99.35	NM	12.23	87.12
	12/19/2006	17.55	NM	99.35	NM	12.43	86.92
	6/21/2007	17.55	NM	99.35	NM	11.56	87.79
	12/10/2007	17.55	NM	99.35	NM	13.22	86.13
	3/11/2009	17.55	NM	99.35	NM	10.96	88.39
	10/16/2009	17.55	NM	99.35	NM	12.72	86.63
	6/4/2010	17.55	NM	99.35	NM	11.58	87.77
12/3/2010	17.55	NM	99.35	NM	13.07	86.28	
5/13/2024	17.55	NM	95.60	NM	9.88	85.72	
IW-4	6/7/2005	17.95	NM	99.47	NM	13.14	86.33
	7/12/2005	17.95	NM	99.47	NM	13.58	85.89
	7/26/2005	17.95	NM	99.47	NM	13.43	86.04
	9/6/2005	17.95	NM	99.47	NM	13.94	85.53
	9/20/2005	17.95	NM	99.47	NM	14.10	85.37
	10/4/2005	17.95	NM	99.47	NM	13.64	85.83
	10/18/2005	17.95	NM	99.47	NM	14.10	85.37
	11/1/2005	17.45	NM	99.47	NM	14.36	85.11
	4/18/2006	17.45	NM	99.47	NM	11.87	87.60
	5/2/2006	17.45	NM	99.47	NM	12.15	87.32
	6/27/2006	17.45	NM	99.47	NM	12.34	87.13
	12/19/2006	17.45	NM	99.47	NM	12.56	86.91
	6/21/2007	17.45	NM	99.47	NM	11.68	87.79
	12/10/2007	17.45	NM	99.47	NM	13.55	85.92
	10/16/2009	17.45	NM	99.47	NM	12.83	86.64
	6/4/2010	17.45	NM	99.47	NM	11.65	87.82
	12/3/2010	17.45	NM	99.47	NM	13.21	86.26
	10/2/2023	17.77	NM	99.47	NM	12.52	86.95
5/13/2024	17.77	NM	94.22	NM	10.21	84.01	
IW-5	6/7/2005	17.55	NM	99.90	NM	13.55	86.35
	7/12/2005	17.55	NM	99.90	NM	13.99	85.91
	8/9/2005	17.55	NM	99.90	NM	14.09	85.81
	9/6/2005	17.55	NM	99.90	NM	14.35	85.55
	9/20/2005	17.55	NM	99.90	NM	14.52	85.38
	10/4/2005	17.55	NM	99.90	NM	14.07	85.83
	10/18/2005	17.55	NM	99.90	NM	14.52	85.38
	11/1/2005	17.55	NM	99.90	NM	14.77	85.13
	4/18/2006	17.55	NM	99.90	NM	12.07	87.83
	5/2/2006	17.55	NM	99.90	NM	12.36	87.54
	6/27/2006	17.55	NM	99.90	NM	12.55	87.35
	12/19/2006	17.55	NM	99.90	NM	12.72	87.18
	6/21/2007	17.55	NM	99.90	NM	11.87	88.03
	12/10/2007	17.55	NM	99.90	NM	13.54	86.36
	10/16/2009	17.55	NM	99.90	NM	13.04	86.86
	6/4/2010	17.55	NM	99.90	NM	11.78	88.12
	12/3/2010	17.55	NM	99.90	NM	13.55	86.35
	10/2/2023	17.46	NM	99.90	NM	11.46	88.44

IW-6	6/7/2005	17.95	NM	99.49	NM	13.06	86.43
	7/12/2005	17.95	NM	99.49	NM	13.48	86.01
	7/26/2005	17.95	NM	99.49	NM	13.38	86.11
	8/23/2005	17.95	NM	99.49	NM	13.69	85.80
	9/6/2005	17.95	NM	99.49	NM	13.85	85.64
	9/20/2005	17.95	NM	99.49	NM	14.02	85.47
	10/4/2005	17.95	NM	99.49	NM	13.52	85.97
	10/18/2005	17.95	NM	99.49	NM	14.01	85.48
	11/1/2005	17.94	NM	99.49	NM	14.28	85.21
	4/18/2006	17.94	NM	99.49	NM	11.62	87.87
	5/2/2006	17.94	NM	99.49	NM	11.94	87.55
	12/19/2006	17.94	NM	99.49	NM	12.29	87.20
	6/21/2007	17.94	NM	99.49	NM	11.45	88.04
	12/10/2007	17.94	NM	99.49	NM	NM	NM
	10/16/2009	17.94	NM	99.49	NM	12.58	86.91
	6/4/2010	17.94	NM	99.49	NM	11.37	88.12
	12/3/2010	17.94	NM	99.49	NM	12.80	86.69
10/2/2023	17.85	NM	99.49	NM	11.90	87.59	
IW-7	6/7/2005	17.95	NM	99.39	NM	12.95	86.44
	7/12/2005	17.95	NM	99.39	NM	13.38	86.01
	7/26/2005	17.95	NM	99.39	NM	13.23	86.16
	9/6/2005	17.95	NM	99.39	NM	13.73	85.66
	9/20/2005	17.95	NM	99.39	NM	13.89	85.50
	10/4/2005	17.95	NM	99.39	NM	13.39	86.00
	10/18/2005	17.95	NM	99.39	NM	13.88	85.51
	11/1/2005	17.93	NM	99.39	NM	14.14	85.25
	4/18/2005	17.93	NM	99.39	NM	11.54	87.85
	5/2/2006	17.93	NM	99.39	NM	11.87	87.52
	12/19/2006	17.93	NM	99.39	NM	12.24	87.15
	6/21/2007	17.93	NM	99.39	NM	11.40	87.99
	12/10/2007	17.93	NM	99.39	NM	13.00	86.39
	3/11/2009	17.93	NM	99.39	NM	10.54	88.85
	10/16/2009	17.93	NM	99.39	NM	12.50	86.89
6/4/2010	17.93	NM	99.39	NM	11.28	88.11	
12/3/2010	17.93	NM	99.39	NM	12.78	86.61	
IW-8	6/7/2005	17.95	NM	99.86	NM	12.60	87.26
	7/12/2005	17.95	NM	99.86	NM	13.03	86.83
	7/26/2005	17.95	NM	99.86	NM	12.95	86.91
	9/6/2005	17.95	NM	99.86	NM	13.38	86.48
	9/20/2005	17.95	NM	99.86	NM	13.54	86.32
	10/4/2005	17.95	NM	99.86	NM	13.08	86.78
	10/18/2005	17.95	NM	99.86	NM	13.54	86.32
	11/1/2005	17.93	NM	99.86	NM	13.80	86.06
	4/18/2006	17.93	NM	99.86	NM	11.10	88.76
	5/2/2006	17.93	NM	99.86	NM	11.48	88.38
	12/19/2006	17.93	NM	99.86	NM	12.05	87.81
	6/21/2007	17.93	NM	99.86	NM	11.14	88.72
	12/10/2007	17.93	NM	99.86	NM	12.75	87.11
	3/11/2009	17.93	NM	99.86	NM	11.04	88.82
	10/16/2009	17.93	NM	99.86	NM	12.31	87.55
	6/4/2010	17.93	NM	99.86	NM	11.21	88.65
12/3/2010	17.93	NM	99.86	NM	12.66	87.20	
10/2/2023	17.62	NM	99.86	NM	11.74	88.12	
IW-9	6/7/2005	17.95	NM	98.17	NM	12.44	85.73
	7/12/2005	17.95	NM	98.17	NM	12.90	85.27
	7/26/2005	17.95	NM	98.17	NM	12.88	85.29
	8/9/2005	17.95	NM	98.17	NM	12.98	85.19
	8/23/2005	17.95	NM	98.17	NM	13.05	85.12
	9/6/2005	17.95	NM	98.17	NM	13.17	85.00
	9/20/2005	17.95	NM	98.17	NM	13.32	84.85
	10/4/2005	17.95	NM	98.17	NM	12.96	85.21
	10/18/2005	17.95	NM	98.17	NM	13.32	84.85
	11/1/2005	17.93	NM	98.17	NM	13.58	84.59
	4/18/2006	17.93	NM	98.17	NM	11.23	86.94
	5/2/2006	17.93	NM	98.17	NM	11.60	86.57
	6/27/2006	17.93	NM	98.17	NM	11.70	86.47
	12/19/2006	17.93	NM	98.17	NM	12.03	86.14
	6/21/2007	17.93	NM	98.17	NM	10.94	87.23
	12/10/2007	17.93	NM	98.17	NM	12.52	85.65
	3/11/2009	17.93	NM	98.17	NM	11.15	87.02
	10/16/2009	17.93	NM	98.17	NM	12.16	86.01
6/4/2010	17.93	NM	98.17	NM	11.15	87.02	
12/3/2010	17.93	NM	98.17	NM	12.53	85.64	

IW-10	6/7/2005	17.95	NM	98.37	NM	12.52	85.85
	7/12/2005	17.95	NM	98.37	NM	12.97	85.40
	7/26/2005	17.95	NM	98.37	NM	12.87	85.50
	8/9/2005	17.95	NM	98.37	NM	12.90	85.47
	9/6/2005	17.95	NM	98.37	NM	13.10	85.27
	9/20/2005	17.95	NM	98.37	NM	13.25	85.12
	10/4/2005	17.95	NM	98.37	NM	12.85	85.52
	10/18/2005	17.95	NM	98.37	NM	13.20	85.17
	11/1/2005	17.95	NM	98.37	NM	13.49	84.88
	4/18/2006	17.95	NM	98.37	NM	11.15	87.22
	5/2/2006	17.95	NM	98.37	NM	11.55	86.82
	12/19/2006	17.95	NM	98.37	NM	12.07	86.30
	6/21/2007	17.95	NM	98.37	NM	11.07	87.30
	12/10/2007	17.95	NM	98.37	NM	12.68	85.69
	3/11/2009	17.95	NM	98.37	NM	11.10	87.27
	10/16/2009	17.95	NM	98.37	NM	12.05	86.32
	6/4/2010	17.95	NM	98.37	NM	10.99	87.38
	12/3/2010	17.95	NM	98.37	NM	12.45	85.92
10/2/2023	17.00	NM	98.37	NM	11.9	86.47	
IW-11	6/7/2005	17.95	NM	98.67	NM	12.36	86.31
	7/12/2005	17.95	NM	98.67	NM	12.79	85.88
	7/26/2005	17.95	NM	98.67	NM	12.63	86.04
	8/9/2005	17.95	NM	98.67	NM	12.83	85.84
	8/23/2005	17.95	NM	98.67	NM	12.92	85.75
	9/6/2005	17.95	NM	98.67	NM	13.11	85.56
	9/20/2005	17.95	NM	98.67	NM	13.25	85.42
	10/4/2005	17.95	NM	98.67	NM	12.76	85.91
	10/18/2005	17.95	NM	98.67	NM	13.26	85.41
	11/1/2005	17.95	NM	98.67	NM	13.58	85.09
	4/18/2006	17.95	NM	98.67	NM	11.00	87.67
	5/2/2006	17.95	NM	98.67	NM	11.32	87.35
	12/19/2006	17.95	NM	98.67	NM	11.80	86.87
	6/21/2007	17.95	NM	98.67	NM	10.98	87.69
	12/10/2007	17.95	NM	98.67	NM	12.50	86.17
	10/16/2009	17.95	NM	98.67	NM	12.15	86.52
	6/4/2010	17.95	NM	98.67	NM	11.06	87.61
	12/3/2010	17.95	NM	98.67	NM	12.47	86.20
10/2/2023	17.72	NM	98.67	NM	11.56	87.11	
IW-12	6/7/2005	13.65	NM	100.05	NM	12.63	87.42
	7/12/2005	13.65	NM	100.05	NM	13.03	87.02
	7/26/2005	13.65	NM	100.05	NM	12.83	87.22
	8/9/2005	13.65	NM	100.05	NM	13.03	87.02
	8/23/2005	13.65	NM	100.05	NM	13.15	86.90
	9/6/2005	13.65	NM	100.05	NM	13.33	86.72
	9/20/2005	13.65	NM	100.05	NM	13.43	86.62
	10/4/2005	13.65	NM	100.05	NM	12.71	87.34
	10/18/2005	13.65	NM	100.05	NM	13.41	86.64
	11/1/2005	13.61	NM	100.05	NM	13.58	86.47
	4/18/2006	13.61	NM	100.05	NM	11.13	88.92
	5/2/2006	13.61	NM	100.05	NM	11.63	88.42
	12/19/2006	13.61	NM	100.05	NM	11.97	88.08
	12/10/2007	13.61	NM	100.05	NM	12.70	87.35
	10/16/2009	13.61	NM	100.05	NM	12.30	87.75
	6/4/2010	13.61	NM	100.05	NM	11.18	88.87
	12/3/2010	13.61	NM	100.05	NM	12.25	87.80
	10/2/2023	13.61	NM	100.05	NM	11.30	88.75

- discrepancies between tables, some updated such as TOC elevation, others are likely table errors  
also includes values that are way different that KPRG took in 2023

Table 2 - Groundwater Analytical Results

Parameter	Well No. Date	WDNR NR 140 Standards		MW-12	MW-11	MW-10	MW-8	MW-13	MW-7	PZ-1R	MW-2R	MW-4R	IW-3	IW-4	MW-1	MW-5	DUPLICATE
		PAL	ES	5/13/2024	5/13/2024	5/13/2024	5/13/2024	5/13/2024	5/14/2024	5/14/2024	5/14/2024	5/14/2024	5/14/2024	5/14/2024	5/14/2024	5/14/2024	5/14/2024
1,1,1-Trichloroethane		40	200	<0.30	<0.30	<0.30	<0.30	<0.30	<0.30	<0.30	<0.30	<0.30	<0.30	<0.30	<0.30	<0.30	<0.30
1,1,2-Trichloroethane		0.5	5	<0.34	<0.34	<0.34	<0.34	<0.34	<0.34	<0.34	<0.34	<0.34	<0.34	<0.34	<0.34	<0.34	<0.34
1,1-Dichloroethane		85	850	<0.30	<0.30	<0.30	<0.30	<0.30	<0.30	<0.30	<0.30	<0.30	<0.30	<0.30	<0.30	<0.30	<0.30
1,1-Dichloroethene		0.7	7	<0.58	<0.58	<0.58	<0.58	<0.58	<0.58	<0.58	<0.58	<0.58	<0.58	<0.58	<0.58	<0.58	<0.58
1,2-Dichloroethane		0.5	5	<0.29	<0.29	<0.29	<0.29	<0.29	<0.29	<0.29	<0.29	<0.29	<0.29	<0.29	<0.29	<0.29	<0.29
Tetrachloroethene		0.5	5	<0.41	<b>14.8</b>	<0.41	<0.41	<u>0.64</u> J	<0.41	<b>59.6</b>	<b>126.0</b>	<b>7.0</b>	<b>27.5</b>	<b>62.6</b>	<b>127.0</b>	<0.41	<b>56.0</b>
Trichloroethene		0.5	5	<0.32	<0.32	<0.32	<0.32	<0.32	<0.32	<u>0.80</u> J	<0.32	<0.32	<0.32	<0.32	<0.32	<0.32	<u>0.80</u> J
Vinyl chloride		0.02	0.2	<0.17	<0.17	<0.17	<0.17	<0.17	<0.17	<0.17	<0.17	<0.17	<0.17	<0.17	<0.17	<0.17	<0.17
cis-1,2-Dichloroethene		7	70	<0.47	<0.47	<0.47	<0.47	<0.47	<0.47	<0.47	<0.47	<0.47	<0.47	<0.47	<0.47	<0.47	<0.47
trans-1,2-Dichloroethene		20	100	<0.53	<0.53	<0.53	<0.53	<0.53	<0.53	<0.53	<0.53	<0.53	<0.53	<0.53	<0.53	<0.53	<0.53

Notes: Results are in ug/L

PAL- Preventative Action Limit

ES- Enforcement Standard

Underlined- Results exceeds PAL

**Bold**- Results exceeds ES

(R)- Resample Event

J- Estimated concentration between the Limits of Detection and Qualification.

**ATTACHMENT**  
**Data Package**



May 23, 2024

Rich Gnat  
KPRG AND ASSOCIATES, INC.  
14665 W. Lisbon Road  
Suite 1A  
Brookfield, WI 53005

RE: Project: 27823 FMR FABRICARE  
Pace Project No.: 40278294

Dear Rich Gnat:

Enclosed are the analytical results for sample(s) received by the laboratory on May 15, 2024. The results relate only to the samples included in this report. Results reported herein conform to the applicable TNI/NELAC Standards and the laboratory's Quality Manual, where applicable, unless otherwise noted in the body of the report.

The test results provided in this final report were generated by each of the following laboratories within the Pace Network:

- Pace Analytical Services - Green Bay

If you have any questions concerning this report, please feel free to contact me.

Sincerely,

Dan Milewsky  
dan.milewsky@pacelabs.com  
(920)469-2436  
Project Manager

Enclosures

cc: Patrick Allenstein, KPRG and Associates, Inc.  
Jack Misner, KPRG AND ASSOCIATES, INC.  
Kaelyn Sperle, KPRG and Associates, Inc.



## REPORT OF LABORATORY ANALYSIS

This report shall not be reproduced, except in full,  
without the written consent of Pace Analytical Services, LLC.





## CERTIFICATIONS

Project: 27823 FMR FABRICARE

Pace Project No.: 40278294

---

### **Pace Analytical Services Green Bay**

1241 Bellevue Street, Green Bay, WI 54302

Florida/NELAP Certification #: E87948

Illinois Certification #: 200050

Kentucky UST Certification #: 82

Louisiana Certification #: 04168

Minnesota Certification #: 055-999-334

New York Certification #: 12064

North Dakota Certification #: R-150

South Carolina Certification #: 83006001

Texas Certification #: T104704529-21-8

Virginia VELAP Certification ID: 11873

Wisconsin Certification #: 405132750

Wisconsin DATCP Certification #: 105-444

USDA Soil Permit #: P330-21-00008

Federal Fish & Wildlife Permit #: 51774A

---

## REPORT OF LABORATORY ANALYSIS

This report shall not be reproduced, except in full,  
without the written consent of Pace Analytical Services, LLC.



### SAMPLE SUMMARY

Project: 27823 FMR FABRICARE

Pace Project No.: 40278294

Lab ID	Sample ID	Matrix	Date Collected	Date Received
40278294001	MW-12	Water	05/13/24 12:05	05/15/24 08:40
40278294002	MW-10	Water	05/13/24 12:52	05/15/24 08:40
40278294003	MW-11	Water	05/13/24 13:30	05/15/24 08:40
40278294004	MW-8	Water	05/13/24 14:40	05/15/24 08:40
40278294005	MW-13	Water	05/13/24 15:06	05/15/24 08:40
40278294006	MW-7	Water	05/14/24 09:15	05/15/24 08:40
40278294007	PZ-1R	Water	05/14/24 09:59	05/15/24 08:40
40278294008	MW-2R	Water	05/14/24 10:30	05/15/24 08:40
40278294009	MW-4R	Water	05/14/24 10:59	05/15/24 08:40
40278294010	IW-3	Water	05/14/24 11:31	05/15/24 08:40
40278294011	IW-4	Water	05/14/24 12:14	05/15/24 08:40
40278294012	MW-1	Water	05/14/24 12:41	05/15/24 08:40
40278294013	MW-5	Water	05/14/24 13:14	05/15/24 08:40
40278294014	DUPLICATE	Water	05/14/24 00:00	05/15/24 08:40
40278294015	TRIP BLANK	Water	05/14/24 00:00	05/15/24 08:40

### REPORT OF LABORATORY ANALYSIS

This report shall not be reproduced, except in full,  
without the written consent of Pace Analytical Services, LLC.



### SAMPLE ANALYTE COUNT

Project: 27823 FMR FABRICARE

Pace Project No.: 40278294

Lab ID	Sample ID	Method	Analysts	Analytes Reported	Laboratory
40278294001	MW-12	EPA 8260	NB	13	PASI-G
40278294002	MW-10	EPA 8260	NB	13	PASI-G
40278294003	MW-11	EPA 8260	NB	13	PASI-G
40278294004	MW-8	EPA 8260	NB	13	PASI-G
40278294005	MW-13	EPA 8260	NB	13	PASI-G
40278294006	MW-7	EPA 8260	NB	13	PASI-G
40278294007	PZ-1R	EPA 8260	NB	13	PASI-G
40278294008	MW-2R	EPA 8260	NB	13	PASI-G
40278294009	MW-4R	EPA 8260	NB	13	PASI-G
40278294010	IW-3	EPA 8260	CXJ	13	PASI-G
40278294011	IW-4	EPA 8260	CXJ	13	PASI-G
40278294012	MW-1	EPA 8260	CXJ	13	PASI-G
40278294013	MW-5	EPA 8260	NB	13	PASI-G
40278294014	DUPLICATE	EPA 8260	CXJ	13	PASI-G
40278294015	TRIP BLANK	EPA 8260	NB	13	PASI-G

PASI-G = Pace Analytical Services - Green Bay

### REPORT OF LABORATORY ANALYSIS

This report shall not be reproduced, except in full,  
without the written consent of Pace Analytical Services, LLC.



### SUMMARY OF DETECTION

Project: 27823 FMR FABRICARE

Pace Project No.: 40278294

Lab Sample ID Method	Client Sample ID Parameters	Result	Units	Report Limit	Analyzed	Qualifiers
<b>40278294003</b>	<b>MW-11</b>					
EPA 8260	Tetrachloroethene	14.8	ug/L	1.0	05/16/24 23:06	
<b>40278294005</b>	<b>MW-13</b>					
EPA 8260	Tetrachloroethene	0.64J	ug/L	1.0	05/16/24 23:45	
<b>40278294007</b>	<b>PZ-1R</b>					
EPA 8260	Tetrachloroethene	59.6	ug/L	1.0	05/17/24 00:24	
EPA 8260	Trichloroethene	0.80J	ug/L	1.0	05/17/24 00:24	
<b>40278294008</b>	<b>MW-2R</b>					
EPA 8260	Tetrachloroethene	126	ug/L	1.0	05/17/24 00:44	
<b>40278294009</b>	<b>MW-4R</b>					
EPA 8260	Tetrachloroethene	7.0	ug/L	1.0	05/17/24 01:03	
<b>40278294010</b>	<b>IW-3</b>					
EPA 8260	Tetrachloroethene	27.5	ug/L	1.0	05/21/24 10:56	
<b>40278294011</b>	<b>IW-4</b>					
EPA 8260	Tetrachloroethene	62.6	ug/L	1.0	05/21/24 11:14	
<b>40278294012</b>	<b>MW-1</b>					
EPA 8260	Tetrachloroethene	127	ug/L	1.0	05/21/24 16:31	
<b>40278294014</b>	<b>DUPLICATE</b>					
EPA 8260	Tetrachloroethene	56.0	ug/L	1.0	05/21/24 11:32	
EPA 8260	Trichloroethene	0.80J	ug/L	1.0	05/21/24 11:32	

### REPORT OF LABORATORY ANALYSIS

This report shall not be reproduced, except in full,  
without the written consent of Pace Analytical Services, LLC.



### ANALYTICAL RESULTS

Project: 27823 FMR FABRICARE

Pace Project No.: 40278294

Sample: MW-12 Lab ID: 40278294001 Collected: 05/13/24 12:05 Received: 05/15/24 08:40 Matrix: Water

Parameters	Results	Units	LOQ	LOD	DF	Prepared	Analyzed	CAS No.	Qual
<b>8260 MSV</b>									
Analytical Method: EPA 8260									
Pace Analytical Services - Green Bay									
1,1,1-Trichloroethane	<0.30	ug/L	1.0	0.30	1		05/16/24 22:27	71-55-6	
1,1,2-Trichloroethane	<0.34	ug/L	1.0	0.34	1		05/16/24 22:27	79-00-5	
1,1-Dichloroethane	<0.30	ug/L	1.0	0.30	1		05/16/24 22:27	75-34-3	
1,1-Dichloroethene	<0.58	ug/L	1.0	0.58	1		05/16/24 22:27	75-35-4	
1,2-Dichloroethane	<0.29	ug/L	1.0	0.29	1		05/16/24 22:27	107-06-2	
Tetrachloroethene	<0.41	ug/L	1.0	0.41	1		05/16/24 22:27	127-18-4	
Trichloroethene	<0.32	ug/L	1.0	0.32	1		05/16/24 22:27	79-01-6	
Vinyl chloride	<0.17	ug/L	1.0	0.17	1		05/16/24 22:27	75-01-4	
cis-1,2-Dichloroethene	<0.47	ug/L	1.0	0.47	1		05/16/24 22:27	156-59-2	
trans-1,2-Dichloroethene	<0.53	ug/L	1.0	0.53	1		05/16/24 22:27	156-60-5	
<b>Surrogates</b>									
4-Bromofluorobenzene (S)	95	%	70-130		1		05/16/24 22:27	460-00-4	
1,2-Dichlorobenzene-d4 (S)	101	%	70-130		1		05/16/24 22:27	2199-69-1	
Toluene-d8 (S)	101	%	70-130		1		05/16/24 22:27	2037-26-5	

### REPORT OF LABORATORY ANALYSIS

This report shall not be reproduced, except in full, without the written consent of Pace Analytical Services, LLC.



### ANALYTICAL RESULTS

Project: 27823 FMR FABRICARE

Pace Project No.: 40278294

Sample: MW-10 Lab ID: 40278294002 Collected: 05/13/24 12:52 Received: 05/15/24 08:40 Matrix: Water

Parameters	Results	Units	LOQ	LOD	DF	Prepared	Analyzed	CAS No.	Qual
<b>8260 MSV</b>									
Analytical Method: EPA 8260									
Pace Analytical Services - Green Bay									
1,1,1-Trichloroethane	<0.30	ug/L	1.0	0.30	1		05/16/24 22:47	71-55-6	
1,1,2-Trichloroethane	<0.34	ug/L	1.0	0.34	1		05/16/24 22:47	79-00-5	
1,1-Dichloroethane	<0.30	ug/L	1.0	0.30	1		05/16/24 22:47	75-34-3	
1,1-Dichloroethene	<0.58	ug/L	1.0	0.58	1		05/16/24 22:47	75-35-4	
1,2-Dichloroethane	<0.29	ug/L	1.0	0.29	1		05/16/24 22:47	107-06-2	
Tetrachloroethene	<0.41	ug/L	1.0	0.41	1		05/16/24 22:47	127-18-4	
Trichloroethene	<0.32	ug/L	1.0	0.32	1		05/16/24 22:47	79-01-6	
Vinyl chloride	<0.17	ug/L	1.0	0.17	1		05/16/24 22:47	75-01-4	
cis-1,2-Dichloroethene	<0.47	ug/L	1.0	0.47	1		05/16/24 22:47	156-59-2	
trans-1,2-Dichloroethene	<0.53	ug/L	1.0	0.53	1		05/16/24 22:47	156-60-5	
<b>Surrogates</b>									
4-Bromofluorobenzene (S)	95	%	70-130		1		05/16/24 22:47	460-00-4	
1,2-Dichlorobenzene-d4 (S)	100	%	70-130		1		05/16/24 22:47	2199-69-1	
Toluene-d8 (S)	101	%	70-130		1		05/16/24 22:47	2037-26-5	

### REPORT OF LABORATORY ANALYSIS

This report shall not be reproduced, except in full, without the written consent of Pace Analytical Services, LLC.



### ANALYTICAL RESULTS

Project: 27823 FMR FABRICARE

Pace Project No.: 40278294

Sample: MW-11 Lab ID: 40278294003 Collected: 05/13/24 13:30 Received: 05/15/24 08:40 Matrix: Water

Parameters	Results	Units	LOQ	LOD	DF	Prepared	Analyzed	CAS No.	Qual
<b>8260 MSV</b>									
Analytical Method: EPA 8260									
Pace Analytical Services - Green Bay									
1,1,1-Trichloroethane	<0.30	ug/L	1.0	0.30	1		05/16/24 23:06	71-55-6	
1,1,2-Trichloroethane	<0.34	ug/L	1.0	0.34	1		05/16/24 23:06	79-00-5	
1,1-Dichloroethane	<0.30	ug/L	1.0	0.30	1		05/16/24 23:06	75-34-3	
1,1-Dichloroethene	<0.58	ug/L	1.0	0.58	1		05/16/24 23:06	75-35-4	
1,2-Dichloroethane	<0.29	ug/L	1.0	0.29	1		05/16/24 23:06	107-06-2	
Tetrachloroethene	14.8	ug/L	1.0	0.41	1		05/16/24 23:06	127-18-4	
Trichloroethene	<0.32	ug/L	1.0	0.32	1		05/16/24 23:06	79-01-6	
Vinyl chloride	<0.17	ug/L	1.0	0.17	1		05/16/24 23:06	75-01-4	
cis-1,2-Dichloroethene	<0.47	ug/L	1.0	0.47	1		05/16/24 23:06	156-59-2	
trans-1,2-Dichloroethene	<0.53	ug/L	1.0	0.53	1		05/16/24 23:06	156-60-5	
<b>Surrogates</b>									
4-Bromofluorobenzene (S)	95	%	70-130		1		05/16/24 23:06	460-00-4	
1,2-Dichlorobenzene-d4 (S)	99	%	70-130		1		05/16/24 23:06	2199-69-1	
Toluene-d8 (S)	101	%	70-130		1		05/16/24 23:06	2037-26-5	

### REPORT OF LABORATORY ANALYSIS

This report shall not be reproduced, except in full, without the written consent of Pace Analytical Services, LLC.



### ANALYTICAL RESULTS

Project: 27823 FMR FABRICARE

Pace Project No.: 40278294

Sample: MW-8 Lab ID: 40278294004 Collected: 05/13/24 14:40 Received: 05/15/24 08:40 Matrix: Water

Parameters	Results	Units	LOQ	LOD	DF	Prepared	Analyzed	CAS No.	Qual
<b>8260 MSV</b>									
Analytical Method: EPA 8260									
Pace Analytical Services - Green Bay									
1,1,1-Trichloroethane	<0.30	ug/L	1.0	0.30	1		05/16/24 23:26	71-55-6	
1,1,2-Trichloroethane	<0.34	ug/L	1.0	0.34	1		05/16/24 23:26	79-00-5	
1,1-Dichloroethane	<0.30	ug/L	1.0	0.30	1		05/16/24 23:26	75-34-3	
1,1-Dichloroethene	<0.58	ug/L	1.0	0.58	1		05/16/24 23:26	75-35-4	
1,2-Dichloroethane	<0.29	ug/L	1.0	0.29	1		05/16/24 23:26	107-06-2	
Tetrachloroethene	<0.41	ug/L	1.0	0.41	1		05/16/24 23:26	127-18-4	
Trichloroethene	<0.32	ug/L	1.0	0.32	1		05/16/24 23:26	79-01-6	
Vinyl chloride	<0.17	ug/L	1.0	0.17	1		05/16/24 23:26	75-01-4	
cis-1,2-Dichloroethene	<0.47	ug/L	1.0	0.47	1		05/16/24 23:26	156-59-2	
trans-1,2-Dichloroethene	<0.53	ug/L	1.0	0.53	1		05/16/24 23:26	156-60-5	
<b>Surrogates</b>									
4-Bromofluorobenzene (S)	95	%	70-130		1		05/16/24 23:26	460-00-4	
1,2-Dichlorobenzene-d4 (S)	100	%	70-130		1		05/16/24 23:26	2199-69-1	
Toluene-d8 (S)	102	%	70-130		1		05/16/24 23:26	2037-26-5	

### REPORT OF LABORATORY ANALYSIS

This report shall not be reproduced, except in full, without the written consent of Pace Analytical Services, LLC.





### ANALYTICAL RESULTS

Project: 27823 FMR FABRICARE

Pace Project No.: 40278294

Sample: MW-13 Lab ID: 40278294005 Collected: 05/13/24 15:06 Received: 05/15/24 08:40 Matrix: Water

Parameters	Results	Units	LOQ	LOD	DF	Prepared	Analyzed	CAS No.	Qual
<b>8260 MSV</b>									
Analytical Method: EPA 8260									
Pace Analytical Services - Green Bay									
1,1,1-Trichloroethane	<0.30	ug/L	1.0	0.30	1		05/16/24 23:45	71-55-6	
1,1,2-Trichloroethane	<0.34	ug/L	1.0	0.34	1		05/16/24 23:45	79-00-5	
1,1-Dichloroethane	<0.30	ug/L	1.0	0.30	1		05/16/24 23:45	75-34-3	
1,1-Dichloroethene	<0.58	ug/L	1.0	0.58	1		05/16/24 23:45	75-35-4	
1,2-Dichloroethane	<0.29	ug/L	1.0	0.29	1		05/16/24 23:45	107-06-2	
Tetrachloroethene	0.64J	ug/L	1.0	0.41	1		05/16/24 23:45	127-18-4	
Trichloroethene	<0.32	ug/L	1.0	0.32	1		05/16/24 23:45	79-01-6	
Vinyl chloride	<0.17	ug/L	1.0	0.17	1		05/16/24 23:45	75-01-4	
cis-1,2-Dichloroethene	<0.47	ug/L	1.0	0.47	1		05/16/24 23:45	156-59-2	
trans-1,2-Dichloroethene	<0.53	ug/L	1.0	0.53	1		05/16/24 23:45	156-60-5	
<b>Surrogates</b>									
4-Bromofluorobenzene (S)	96	%	70-130		1		05/16/24 23:45	460-00-4	
1,2-Dichlorobenzene-d4 (S)	98	%	70-130		1		05/16/24 23:45	2199-69-1	
Toluene-d8 (S)	101	%	70-130		1		05/16/24 23:45	2037-26-5	

### REPORT OF LABORATORY ANALYSIS

This report shall not be reproduced, except in full, without the written consent of Pace Analytical Services, LLC.



### ANALYTICAL RESULTS

Project: 27823 FMR FABRICARE

Pace Project No.: 40278294

Sample: MW-7 Lab ID: 40278294006 Collected: 05/14/24 09:15 Received: 05/15/24 08:40 Matrix: Water

Parameters	Results	Units	LOQ	LOD	DF	Prepared	Analyzed	CAS No.	Qual
<b>8260 MSV</b>									
Analytical Method: EPA 8260									
Pace Analytical Services - Green Bay									
1,1,1-Trichloroethane	<0.30	ug/L	1.0	0.30	1		05/17/24 00:05	71-55-6	
1,1,2-Trichloroethane	<0.34	ug/L	1.0	0.34	1		05/17/24 00:05	79-00-5	
1,1-Dichloroethane	<0.30	ug/L	1.0	0.30	1		05/17/24 00:05	75-34-3	
1,1-Dichloroethene	<0.58	ug/L	1.0	0.58	1		05/17/24 00:05	75-35-4	
1,2-Dichloroethane	<0.29	ug/L	1.0	0.29	1		05/17/24 00:05	107-06-2	
Tetrachloroethene	<0.41	ug/L	1.0	0.41	1		05/17/24 00:05	127-18-4	
Trichloroethene	<0.32	ug/L	1.0	0.32	1		05/17/24 00:05	79-01-6	
Vinyl chloride	<0.17	ug/L	1.0	0.17	1		05/17/24 00:05	75-01-4	
cis-1,2-Dichloroethene	<0.47	ug/L	1.0	0.47	1		05/17/24 00:05	156-59-2	
trans-1,2-Dichloroethene	<0.53	ug/L	1.0	0.53	1		05/17/24 00:05	156-60-5	
<b>Surrogates</b>									
4-Bromofluorobenzene (S)	95	%	70-130		1		05/17/24 00:05	460-00-4	
1,2-Dichlorobenzene-d4 (S)	98	%	70-130		1		05/17/24 00:05	2199-69-1	
Toluene-d8 (S)	101	%	70-130		1		05/17/24 00:05	2037-26-5	

### REPORT OF LABORATORY ANALYSIS

This report shall not be reproduced, except in full, without the written consent of Pace Analytical Services, LLC.



### ANALYTICAL RESULTS

Project: 27823 FMR FABRICARE

Pace Project No.: 40278294

Sample: PZ-1R Lab ID: 40278294007 Collected: 05/14/24 09:59 Received: 05/15/24 08:40 Matrix: Water

Parameters	Results	Units	LOQ	LOD	DF	Prepared	Analyzed	CAS No.	Qual
<b>8260 MSV</b>									
Analytical Method: EPA 8260									
Pace Analytical Services - Green Bay									
1,1,1-Trichloroethane	<0.30	ug/L	1.0	0.30	1		05/17/24 00:24	71-55-6	
1,1,2-Trichloroethane	<0.34	ug/L	1.0	0.34	1		05/17/24 00:24	79-00-5	
1,1-Dichloroethane	<0.30	ug/L	1.0	0.30	1		05/17/24 00:24	75-34-3	
1,1-Dichloroethene	<0.58	ug/L	1.0	0.58	1		05/17/24 00:24	75-35-4	
1,2-Dichloroethane	<0.29	ug/L	1.0	0.29	1		05/17/24 00:24	107-06-2	
Tetrachloroethene	59.6	ug/L	1.0	0.41	1		05/17/24 00:24	127-18-4	
Trichloroethene	0.80J	ug/L	1.0	0.32	1		05/17/24 00:24	79-01-6	
Vinyl chloride	<0.17	ug/L	1.0	0.17	1		05/17/24 00:24	75-01-4	
cis-1,2-Dichloroethene	<0.47	ug/L	1.0	0.47	1		05/17/24 00:24	156-59-2	
trans-1,2-Dichloroethene	<0.53	ug/L	1.0	0.53	1		05/17/24 00:24	156-60-5	
<b>Surrogates</b>									
4-Bromofluorobenzene (S)	97	%	70-130		1		05/17/24 00:24	460-00-4	
1,2-Dichlorobenzene-d4 (S)	99	%	70-130		1		05/17/24 00:24	2199-69-1	
Toluene-d8 (S)	100	%	70-130		1		05/17/24 00:24	2037-26-5	

### REPORT OF LABORATORY ANALYSIS

This report shall not be reproduced, except in full,  
without the written consent of Pace Analytical Services, LLC.



### ANALYTICAL RESULTS

Project: 27823 FMR FABRICARE

Pace Project No.: 40278294

Sample: MW-2R Lab ID: 40278294008 Collected: 05/14/24 10:30 Received: 05/15/24 08:40 Matrix: Water

Parameters	Results	Units	LOQ	LOD	DF	Prepared	Analyzed	CAS No.	Qual
<b>8260 MSV</b>									
Analytical Method: EPA 8260									
Pace Analytical Services - Green Bay									
1,1,1-Trichloroethane	<0.30	ug/L	1.0	0.30	1		05/17/24 00:44	71-55-6	
1,1,2-Trichloroethane	<0.34	ug/L	1.0	0.34	1		05/17/24 00:44	79-00-5	
1,1-Dichloroethane	<0.30	ug/L	1.0	0.30	1		05/17/24 00:44	75-34-3	
1,1-Dichloroethene	<0.58	ug/L	1.0	0.58	1		05/17/24 00:44	75-35-4	
1,2-Dichloroethane	<0.29	ug/L	1.0	0.29	1		05/17/24 00:44	107-06-2	
Tetrachloroethene	126	ug/L	1.0	0.41	1		05/17/24 00:44	127-18-4	
Trichloroethene	<0.32	ug/L	1.0	0.32	1		05/17/24 00:44	79-01-6	
Vinyl chloride	<0.17	ug/L	1.0	0.17	1		05/17/24 00:44	75-01-4	
cis-1,2-Dichloroethene	<0.47	ug/L	1.0	0.47	1		05/17/24 00:44	156-59-2	
trans-1,2-Dichloroethene	<0.53	ug/L	1.0	0.53	1		05/17/24 00:44	156-60-5	
<b>Surrogates</b>									
4-Bromofluorobenzene (S)	96	%	70-130		1		05/17/24 00:44	460-00-4	
1,2-Dichlorobenzene-d4 (S)	100	%	70-130		1		05/17/24 00:44	2199-69-1	
Toluene-d8 (S)	102	%	70-130		1		05/17/24 00:44	2037-26-5	

### REPORT OF LABORATORY ANALYSIS

This report shall not be reproduced, except in full, without the written consent of Pace Analytical Services, LLC.



### ANALYTICAL RESULTS

Project: 27823 FMR FABRICARE

Pace Project No.: 40278294

Sample: MW-4R Lab ID: 40278294009 Collected: 05/14/24 10:59 Received: 05/15/24 08:40 Matrix: Water

Parameters	Results	Units	LOQ	LOD	DF	Prepared	Analyzed	CAS No.	Qual
<b>8260 MSV</b>									
Analytical Method: EPA 8260									
Pace Analytical Services - Green Bay									
1,1,1-Trichloroethane	<0.30	ug/L	1.0	0.30	1		05/17/24 01:03	71-55-6	
1,1,2-Trichloroethane	<0.34	ug/L	1.0	0.34	1		05/17/24 01:03	79-00-5	
1,1-Dichloroethane	<0.30	ug/L	1.0	0.30	1		05/17/24 01:03	75-34-3	
1,1-Dichloroethene	<0.58	ug/L	1.0	0.58	1		05/17/24 01:03	75-35-4	
1,2-Dichloroethane	<0.29	ug/L	1.0	0.29	1		05/17/24 01:03	107-06-2	
Tetrachloroethene	7.0	ug/L	1.0	0.41	1		05/17/24 01:03	127-18-4	
Trichloroethene	<0.32	ug/L	1.0	0.32	1		05/17/24 01:03	79-01-6	
Vinyl chloride	<0.17	ug/L	1.0	0.17	1		05/17/24 01:03	75-01-4	
cis-1,2-Dichloroethene	<0.47	ug/L	1.0	0.47	1		05/17/24 01:03	156-59-2	
trans-1,2-Dichloroethene	<0.53	ug/L	1.0	0.53	1		05/17/24 01:03	156-60-5	
<b>Surrogates</b>									
4-Bromofluorobenzene (S)	96	%	70-130		1		05/17/24 01:03	460-00-4	
1,2-Dichlorobenzene-d4 (S)	100	%	70-130		1		05/17/24 01:03	2199-69-1	
Toluene-d8 (S)	101	%	70-130		1		05/17/24 01:03	2037-26-5	

### REPORT OF LABORATORY ANALYSIS

This report shall not be reproduced, except in full, without the written consent of Pace Analytical Services, LLC.



### ANALYTICAL RESULTS

Project: 27823 FMR FABRICARE

Pace Project No.: 40278294

Sample: IW-3 Lab ID: 40278294010 Collected: 05/14/24 11:31 Received: 05/15/24 08:40 Matrix: Water

Parameters	Results	Units	LOQ	LOD	DF	Prepared	Analyzed	CAS No.	Qual
<b>8260 MSV</b>									
Analytical Method: EPA 8260									
Pace Analytical Services - Green Bay									
1,1,1-Trichloroethane	<0.30	ug/L	1.0	0.30	1		05/21/24 10:56	71-55-6	
1,1,2-Trichloroethane	<0.34	ug/L	1.0	0.34	1		05/21/24 10:56	79-00-5	
1,1-Dichloroethane	<0.30	ug/L	1.0	0.30	1		05/21/24 10:56	75-34-3	
1,1-Dichloroethene	<0.58	ug/L	1.0	0.58	1		05/21/24 10:56	75-35-4	
1,2-Dichloroethane	<0.29	ug/L	1.0	0.29	1		05/21/24 10:56	107-06-2	
Tetrachloroethene	27.5	ug/L	1.0	0.41	1		05/21/24 10:56	127-18-4	
Trichloroethene	<0.32	ug/L	1.0	0.32	1		05/21/24 10:56	79-01-6	
Vinyl chloride	<0.17	ug/L	1.0	0.17	1		05/21/24 10:56	75-01-4	
cis-1,2-Dichloroethene	<0.47	ug/L	1.0	0.47	1		05/21/24 10:56	156-59-2	
trans-1,2-Dichloroethene	<0.53	ug/L	1.0	0.53	1		05/21/24 10:56	156-60-5	
<b>Surrogates</b>									
4-Bromofluorobenzene (S)	108	%	70-130		1		05/21/24 10:56	460-00-4	
1,2-Dichlorobenzene-d4 (S)	97	%	70-130		1		05/21/24 10:56	2199-69-1	
Toluene-d8 (S)	105	%	70-130		1		05/21/24 10:56	2037-26-5	

### REPORT OF LABORATORY ANALYSIS

This report shall not be reproduced, except in full, without the written consent of Pace Analytical Services, LLC.



### ANALYTICAL RESULTS

Project: 27823 FMR FABRICARE

Pace Project No.: 40278294

Sample: IW-4 Lab ID: 40278294011 Collected: 05/14/24 12:14 Received: 05/15/24 08:40 Matrix: Water

Parameters	Results	Units	LOQ	LOD	DF	Prepared	Analyzed	CAS No.	Qual
<b>8260 MSV</b>									
Analytical Method: EPA 8260									
Pace Analytical Services - Green Bay									
1,1,1-Trichloroethane	<0.30	ug/L	1.0	0.30	1		05/21/24 11:14	71-55-6	
1,1,2-Trichloroethane	<0.34	ug/L	1.0	0.34	1		05/21/24 11:14	79-00-5	
1,1-Dichloroethane	<0.30	ug/L	1.0	0.30	1		05/21/24 11:14	75-34-3	
1,1-Dichloroethene	<0.58	ug/L	1.0	0.58	1		05/21/24 11:14	75-35-4	
1,2-Dichloroethane	<0.29	ug/L	1.0	0.29	1		05/21/24 11:14	107-06-2	
Tetrachloroethene	62.6	ug/L	1.0	0.41	1		05/21/24 11:14	127-18-4	
Trichloroethene	<0.32	ug/L	1.0	0.32	1		05/21/24 11:14	79-01-6	
Vinyl chloride	<0.17	ug/L	1.0	0.17	1		05/21/24 11:14	75-01-4	
cis-1,2-Dichloroethene	<0.47	ug/L	1.0	0.47	1		05/21/24 11:14	156-59-2	
trans-1,2-Dichloroethene	<0.53	ug/L	1.0	0.53	1		05/21/24 11:14	156-60-5	
<b>Surrogates</b>									
4-Bromofluorobenzene (S)	109	%	70-130		1		05/21/24 11:14	460-00-4	
1,2-Dichlorobenzene-d4 (S)	99	%	70-130		1		05/21/24 11:14	2199-69-1	
Toluene-d8 (S)	106	%	70-130		1		05/21/24 11:14	2037-26-5	

### REPORT OF LABORATORY ANALYSIS

This report shall not be reproduced, except in full, without the written consent of Pace Analytical Services, LLC.



### ANALYTICAL RESULTS

Project: 27823 FMR FABRICARE

Pace Project No.: 40278294

Sample: MW-1 Lab ID: 40278294012 Collected: 05/14/24 12:41 Received: 05/15/24 08:40 Matrix: Water

Parameters	Results	Units	LOQ	LOD	DF	Prepared	Analyzed	CAS No.	Qual
<b>8260 MSV</b>									
Analytical Method: EPA 8260									
Pace Analytical Services - Green Bay									
1,1,1-Trichloroethane	<0.30	ug/L	1.0	0.30	1		05/21/24 16:31	71-55-6	
1,1,2-Trichloroethane	<0.34	ug/L	1.0	0.34	1		05/21/24 16:31	79-00-5	
1,1-Dichloroethane	<0.30	ug/L	1.0	0.30	1		05/21/24 16:31	75-34-3	
1,1-Dichloroethene	<0.58	ug/L	1.0	0.58	1		05/21/24 16:31	75-35-4	
1,2-Dichloroethane	<0.29	ug/L	1.0	0.29	1		05/21/24 16:31	107-06-2	
Tetrachloroethene	127	ug/L	1.0	0.41	1		05/21/24 16:31	127-18-4	
Trichloroethene	<0.32	ug/L	1.0	0.32	1		05/21/24 16:31	79-01-6	
Vinyl chloride	<0.17	ug/L	1.0	0.17	1		05/21/24 16:31	75-01-4	
cis-1,2-Dichloroethene	<0.47	ug/L	1.0	0.47	1		05/21/24 16:31	156-59-2	
trans-1,2-Dichloroethene	<0.53	ug/L	1.0	0.53	1		05/21/24 16:31	156-60-5	
<b>Surrogates</b>									
4-Bromofluorobenzene (S)	109	%	70-130		1		05/21/24 16:31	460-00-4	
1,2-Dichlorobenzene-d4 (S)	97	%	70-130		1		05/21/24 16:31	2199-69-1	
Toluene-d8 (S)	107	%	70-130		1		05/21/24 16:31	2037-26-5	

### REPORT OF LABORATORY ANALYSIS

This report shall not be reproduced, except in full, without the written consent of Pace Analytical Services, LLC.





### ANALYTICAL RESULTS

Project: 27823 FMR FABRICARE

Pace Project No.: 40278294

Sample: MW-5 Lab ID: 40278294013 Collected: 05/14/24 13:14 Received: 05/15/24 08:40 Matrix: Water

Parameters	Results	Units	LOQ	LOD	DF	Prepared	Analyzed	CAS No.	Qual
<b>8260 MSV</b>									
Analytical Method: EPA 8260									
Pace Analytical Services - Green Bay									
1,1,1-Trichloroethane	<0.30	ug/L	1.0	0.30	1		05/16/24 21:28	71-55-6	
1,1,2-Trichloroethane	<0.34	ug/L	1.0	0.34	1		05/16/24 21:28	79-00-5	
1,1-Dichloroethane	<0.30	ug/L	1.0	0.30	1		05/16/24 21:28	75-34-3	
1,1-Dichloroethene	<0.58	ug/L	1.0	0.58	1		05/16/24 21:28	75-35-4	
1,2-Dichloroethane	<0.29	ug/L	1.0	0.29	1		05/16/24 21:28	107-06-2	
Tetrachloroethene	<0.41	ug/L	1.0	0.41	1		05/16/24 21:28	127-18-4	
Trichloroethene	<0.32	ug/L	1.0	0.32	1		05/16/24 21:28	79-01-6	
Vinyl chloride	<0.17	ug/L	1.0	0.17	1		05/16/24 21:28	75-01-4	
cis-1,2-Dichloroethene	<0.47	ug/L	1.0	0.47	1		05/16/24 21:28	156-59-2	
trans-1,2-Dichloroethene	<0.53	ug/L	1.0	0.53	1		05/16/24 21:28	156-60-5	
<b>Surrogates</b>									
4-Bromofluorobenzene (S)	95	%	70-130		1		05/16/24 21:28	460-00-4	
1,2-Dichlorobenzene-d4 (S)	99	%	70-130		1		05/16/24 21:28	2199-69-1	
Toluene-d8 (S)	100	%	70-130		1		05/16/24 21:28	2037-26-5	

### REPORT OF LABORATORY ANALYSIS

This report shall not be reproduced, except in full, without the written consent of Pace Analytical Services, LLC.



### ANALYTICAL RESULTS

Project: 27823 FMR FABRICARE

Pace Project No.: 40278294

Sample: DUPLICATE Lab ID: 40278294014 Collected: 05/14/24 00:00 Received: 05/15/24 08:40 Matrix: Water

Parameters	Results	Units	LOQ	LOD	DF	Prepared	Analyzed	CAS No.	Qual
<b>8260 MSV</b>									
Analytical Method: EPA 8260									
Pace Analytical Services - Green Bay									
1,1,1-Trichloroethane	<0.30	ug/L	1.0	0.30	1		05/21/24 11:32	71-55-6	
1,1,2-Trichloroethane	<0.34	ug/L	1.0	0.34	1		05/21/24 11:32	79-00-5	
1,1-Dichloroethane	<0.30	ug/L	1.0	0.30	1		05/21/24 11:32	75-34-3	
1,1-Dichloroethene	<0.58	ug/L	1.0	0.58	1		05/21/24 11:32	75-35-4	
1,2-Dichloroethane	<0.29	ug/L	1.0	0.29	1		05/21/24 11:32	107-06-2	
Tetrachloroethene	56.0	ug/L	1.0	0.41	1		05/21/24 11:32	127-18-4	
Trichloroethene	0.80J	ug/L	1.0	0.32	1		05/21/24 11:32	79-01-6	
Vinyl chloride	<0.17	ug/L	1.0	0.17	1		05/21/24 11:32	75-01-4	
cis-1,2-Dichloroethene	<0.47	ug/L	1.0	0.47	1		05/21/24 11:32	156-59-2	
trans-1,2-Dichloroethene	<0.53	ug/L	1.0	0.53	1		05/21/24 11:32	156-60-5	
<b>Surrogates</b>									
4-Bromofluorobenzene (S)	109	%	70-130		1		05/21/24 11:32	460-00-4	
1,2-Dichlorobenzene-d4 (S)	98	%	70-130		1		05/21/24 11:32	2199-69-1	
Toluene-d8 (S)	105	%	70-130		1		05/21/24 11:32	2037-26-5	

### REPORT OF LABORATORY ANALYSIS

This report shall not be reproduced, except in full, without the written consent of Pace Analytical Services, LLC.



### ANALYTICAL RESULTS

Project: 27823 FMR FABRICARE

Pace Project No.: 40278294

Sample: TRIP BLANK Lab ID: 40278294015 Collected: 05/14/24 00:00 Received: 05/15/24 08:40 Matrix: Water

Parameters	Results	Units	LOQ	LOD	DF	Prepared	Analyzed	CAS No.	Qual
<b>8260 MSV</b>									
Analytical Method: EPA 8260									
Pace Analytical Services - Green Bay									
1,1,1-Trichloroethane	<0.30	ug/L	1.0	0.30	1		05/16/24 20:10	71-55-6	
1,1,2-Trichloroethane	<0.34	ug/L	1.0	0.34	1		05/16/24 20:10	79-00-5	
1,1-Dichloroethane	<0.30	ug/L	1.0	0.30	1		05/16/24 20:10	75-34-3	
1,1-Dichloroethene	<0.58	ug/L	1.0	0.58	1		05/16/24 20:10	75-35-4	
1,2-Dichloroethane	<0.29	ug/L	1.0	0.29	1		05/16/24 20:10	107-06-2	
Tetrachloroethene	<0.41	ug/L	1.0	0.41	1		05/16/24 20:10	127-18-4	
Trichloroethene	<0.32	ug/L	1.0	0.32	1		05/16/24 20:10	79-01-6	
Vinyl chloride	<0.17	ug/L	1.0	0.17	1		05/16/24 20:10	75-01-4	
cis-1,2-Dichloroethene	<0.47	ug/L	1.0	0.47	1		05/16/24 20:10	156-59-2	
trans-1,2-Dichloroethene	<0.53	ug/L	1.0	0.53	1		05/16/24 20:10	156-60-5	
<b>Surrogates</b>									
4-Bromofluorobenzene (S)	97	%	70-130		1		05/16/24 20:10	460-00-4	HS
1,2-Dichlorobenzene-d4 (S)	100	%	70-130		1		05/16/24 20:10	2199-69-1	
Toluene-d8 (S)	100	%	70-130		1		05/16/24 20:10	2037-26-5	

### REPORT OF LABORATORY ANALYSIS

This report shall not be reproduced, except in full, without the written consent of Pace Analytical Services, LLC.



**QUALITY CONTROL DATA**

Project: 27823 FMR FABRICARE

Pace Project No.: 40278294

QC Batch:	474556	Analysis Method:	EPA 8260
QC Batch Method:	EPA 8260	Analysis Description:	8260 MSV
		Laboratory:	Pace Analytical Services - Green Bay
Associated Lab Samples:	40278294001, 40278294002, 40278294003, 40278294004, 40278294005, 40278294006, 40278294007, 40278294008, 40278294009, 40278294013, 40278294015		

METHOD BLANK: 2717375 Matrix: Water  
 Associated Lab Samples: 40278294001, 40278294002, 40278294003, 40278294004, 40278294005, 40278294006, 40278294007, 40278294008, 40278294009, 40278294013, 40278294015

Parameter	Units	Blank Result	Reporting Limit	Analyzed	Qualifiers
1,1,1-Trichloroethane	ug/L	<0.30	1.0	05/16/24 14:39	
1,1,2-Trichloroethane	ug/L	<0.34	1.0	05/16/24 14:39	
1,1-Dichloroethane	ug/L	<0.30	1.0	05/16/24 14:39	
1,1-Dichloroethene	ug/L	<0.58	1.0	05/16/24 14:39	
1,2-Dichloroethane	ug/L	<0.29	1.0	05/16/24 14:39	
cis-1,2-Dichloroethene	ug/L	<0.47	1.0	05/16/24 14:39	
Tetrachloroethene	ug/L	<0.41	1.0	05/16/24 14:39	
trans-1,2-Dichloroethene	ug/L	<0.53	1.0	05/16/24 14:39	
Trichloroethene	ug/L	<0.32	1.0	05/16/24 14:39	
Vinyl chloride	ug/L	<0.17	1.0	05/16/24 14:39	
1,2-Dichlorobenzene-d4 (S)	%	99	70-130	05/16/24 14:39	
4-Bromofluorobenzene (S)	%	96	70-130	05/16/24 14:39	
Toluene-d8 (S)	%	100	70-130	05/16/24 14:39	

LABORATORY CONTROL SAMPLE: 2717376

Parameter	Units	Spike Conc.	LCS Result	LCS % Rec	% Rec Limits	Qualifiers
1,1,1-Trichloroethane	ug/L	50	49.4	99	70-132	
1,1,2-Trichloroethane	ug/L	50	49.2	98	70-130	
1,1-Dichloroethane	ug/L	50	49.0	98	70-130	
1,1-Dichloroethene	ug/L	50	46.8	94	73-140	
1,2-Dichloroethane	ug/L	50	52.1	104	70-130	
cis-1,2-Dichloroethene	ug/L	50	47.3	95	70-130	
Tetrachloroethene	ug/L	50	50.4	101	70-130	
trans-1,2-Dichloroethene	ug/L	50	46.3	93	70-131	
Trichloroethene	ug/L	50	50.0	100	70-130	
Vinyl chloride	ug/L	50	47.4	95	51-145	
1,2-Dichlorobenzene-d4 (S)	%			100	70-130	
4-Bromofluorobenzene (S)	%			96	70-130	
Toluene-d8 (S)	%			99	70-130	

MATRIX SPIKE & MATRIX SPIKE DUPLICATE: 2718215 2718216

Parameter	Units	MS		MSD		MS Result	MSD Result	MS % Rec	MSD % Rec	% Rec Limits	RPD	Max RPD	Qual
		40278153009	Spike Conc.	Spike Conc.	MS Result								
1,1,1-Trichloroethane	ug/L	<0.30	50	50	50.7	51.9	101	104	70-132	2	20		

Results presented on this page are in the units indicated by the "Units" column except where an alternate unit is presented to the right of the result.

**REPORT OF LABORATORY ANALYSIS**

This report shall not be reproduced, except in full, without the written consent of Pace Analytical Services, LLC.



**QUALITY CONTROL DATA**

Project: 27823 FMR FABRICARE

Pace Project No.: 40278294

Parameter	Units	2718215		2718216		MS Result	MSD Result	MS % Rec	MSD % Rec	% Rec Limits	RPD	Max RPD	Qual
		40278153009 Result	MS Spike Conc.	MSD Spike Conc.	MS Result								
1,1,2-Trichloroethane	ug/L	<0.34	50	50	48.2	48.8	96	98	70-130	1	20		
1,1-Dichloroethane	ug/L	<0.30	50	50	48.7	50.4	97	101	70-131	3	20		
1,1-Dichloroethene	ug/L	<0.58	50	50	47.8	49.3	96	99	69-146	3	20		
1,2-Dichloroethane	ug/L	<0.29	50	50	50.5	51.8	101	104	70-130	3	20		
cis-1,2-Dichloroethene	ug/L	1.2	50	50	47.8	49.5	93	97	70-130	4	20		
Tetrachloroethene	ug/L	<0.41	50	50	52.2	52.2	104	104	70-131	0	20		
trans-1,2-Dichloroethene	ug/L	<0.53	50	50	46.8	48.2	94	96	70-135	3	20		
Trichloroethene	ug/L	<0.32	50	50	49.2	51.4	98	103	70-130	4	20		
Vinyl chloride	ug/L	<0.17	50	50	48.0	49.2	96	98	45-147	2	20		
1,2-Dichlorobenzene-d4 (S)	%						99	99	70-130				
4-Bromofluorobenzene (S)	%						98	96	70-130				
Toluene-d8 (S)	%						100	101	70-130				

Results presented on this page are in the units indicated by the "Units" column except where an alternate unit is presented to the right of the result.

**REPORT OF LABORATORY ANALYSIS**

This report shall not be reproduced, except in full,  
without the written consent of Pace Analytical Services, LLC.



**QUALITY CONTROL DATA**

Project: 27823 FMR FABRICARE

Pace Project No.: 40278294

QC Batch:	474749	Analysis Method:	EPA 8260
QC Batch Method:	EPA 8260	Analysis Description:	8260 MSV
		Laboratory:	Pace Analytical Services - Green Bay

Associated Lab Samples: 40278294010, 40278294011, 40278294012, 40278294014

METHOD BLANK: 2719216 Matrix: Water

Associated Lab Samples: 40278294010, 40278294011, 40278294012, 40278294014

Parameter	Units	Blank Result	Reporting Limit	Analyzed	Qualifiers
1,1,1-Trichloroethane	ug/L	<0.30	1.0	05/21/24 08:15	
1,1,2-Trichloroethane	ug/L	<0.34	1.0	05/21/24 08:15	
1,1-Dichloroethane	ug/L	<0.30	1.0	05/21/24 08:15	
1,1-Dichloroethene	ug/L	<0.58	1.0	05/21/24 08:15	
1,2-Dichloroethane	ug/L	<0.29	1.0	05/21/24 08:15	
cis-1,2-Dichloroethene	ug/L	<0.47	1.0	05/21/24 08:15	
Tetrachloroethene	ug/L	<0.41	1.0	05/21/24 08:15	
trans-1,2-Dichloroethene	ug/L	<0.53	1.0	05/21/24 08:15	
Trichloroethene	ug/L	<0.32	1.0	05/21/24 08:15	
Vinyl chloride	ug/L	<0.17	1.0	05/21/24 08:15	
1,2-Dichlorobenzene-d4 (S)	%	99	70-130	05/21/24 08:15	
4-Bromofluorobenzene (S)	%	108	70-130	05/21/24 08:15	
Toluene-d8 (S)	%	104	70-130	05/21/24 08:15	

LABORATORY CONTROL SAMPLE: 2719217

Parameter	Units	Spike Conc.	LCS Result	LCS % Rec	% Rec Limits	Qualifiers
1,1,1-Trichloroethane	ug/L	50	53.4	107	70-132	
1,1,2-Trichloroethane	ug/L	50	50.7	101	70-130	
1,1-Dichloroethane	ug/L	50	50.4	101	70-130	
1,1-Dichloroethene	ug/L	50	48.5	97	73-140	
1,2-Dichloroethane	ug/L	50	53.8	108	70-130	
cis-1,2-Dichloroethene	ug/L	50	48.4	97	70-130	
Tetrachloroethene	ug/L	50	48.8	98	70-130	
trans-1,2-Dichloroethene	ug/L	50	52.6	105	70-131	
Trichloroethene	ug/L	50	51.6	103	70-130	
Vinyl chloride	ug/L	50	50.4	101	51-145	
1,2-Dichlorobenzene-d4 (S)	%			100	70-130	
4-Bromofluorobenzene (S)	%			107	70-130	
Toluene-d8 (S)	%			102	70-130	

MATRIX SPIKE & MATRIX SPIKE DUPLICATE: 2719697 2719698

Parameter	Units	MS		MSD		MS Result	MSD Result	MS % Rec	MSD % Rec	% Rec Limits	RPD	Max RPD	Qual
		40278331015 Result	Spike Conc.	Spike Conc.	Conc.								
1,1,1-Trichloroethane	ug/L	<0.30	50	50	50.3	51.0	101	102	70-132	1	20		
1,1,2-Trichloroethane	ug/L	<0.34	50	50	48.0	50.0	96	100	70-130	4	20		

Results presented on this page are in the units indicated by the "Units" column except where an alternate unit is presented to the right of the result.

**REPORT OF LABORATORY ANALYSIS**

This report shall not be reproduced, except in full, without the written consent of Pace Analytical Services, LLC.



**QUALITY CONTROL DATA**

Project: 27823 FMR FABRICARE

Pace Project No.: 40278294

Parameter	Units	40278331015		2719697		2719698		% Rec	% Rec	% Rec	Limits	RPD	Max RPD	Qual
		Result	MS Spike Conc.	MSD Spike Conc.	MS Result	MSD Result	MS % Rec							
1,1-Dichloroethane	ug/L	<0.30	50	50	48.4	49.1	97	98	70-131	1	20			
1,1-Dichloroethene	ug/L	<0.58	50	50	45.2	46.2	90	92	69-146	2	20			
1,2-Dichloroethane	ug/L	<0.29	50	50	50.3	51.5	101	103	70-130	2	20			
cis-1,2-Dichloroethene	ug/L	1.3	50	50	47.4	47.9	92	93	70-130	1	20			
Tetrachloroethene	ug/L	<0.41	50	50	48.4	49.4	97	99	70-131	2	20			
trans-1,2-Dichloroethene	ug/L	<0.53	50	50	50.1	51.2	100	102	70-135	2	20			
Trichloroethene	ug/L	0.65J	50	50	48.4	48.7	95	96	70-130	1	20			
Vinyl chloride	ug/L	<0.17	50	50	48.3	47.6	97	95	45-147	2	20			
1,2-Dichlorobenzene-d4 (S)	%						97	100	70-130					
4-Bromofluorobenzene (S)	%						109	109	70-130					
Toluene-d8 (S)	%						104	105	70-130					

Results presented on this page are in the units indicated by the "Units" column except where an alternate unit is presented to the right of the result.

**REPORT OF LABORATORY ANALYSIS**

This report shall not be reproduced, except in full, without the written consent of Pace Analytical Services, LLC.



## QUALIFIERS

Project: 27823 FMR FABRICARE

Pace Project No.: 40278294

---

### DEFINITIONS

DF - Dilution Factor, if reported, represents the factor applied to the reported data due to dilution of the sample aliquot.

ND - Not Detected at or above LOD.

J - The reported result is an estimated value.

LOD - Limit of Detection adjusted for dilution factor, percent moisture, initial weight and final volume.

LOQ - Limit of Quantitation adjusted for dilution factor, percent moisture, initial weight and final volume.

DL - Adjusted Method Detection Limit.

S - Surrogate

1,2-Diphenylhydrazine decomposes to and cannot be separated from Azobenzene using Method 8270. The result for each analyte is a combined concentration.

Consistent with EPA guidelines, unrounded data are displayed and have been used to calculate % recovery and RPD values.

LCS(D) - Laboratory Control Sample (Duplicate)

MS(D) - Matrix Spike (Duplicate)

DUP - Sample Duplicate

RPD - Relative Percent Difference

NC - Not Calculable.

SG - Silica Gel - Clean-Up

U - Analyte was not detected and is reported as less than the LOD or as defined by the customer.

N-Nitrosodiphenylamine decomposes and cannot be separated from Diphenylamine using Method 8270. The result reported for each analyte is a combined concentration.

Pace Analytical is TNI accredited. Contact your Pace PM for the current list of accredited analytes.

TNI - The NELAC Institute.

### ANALYTE QUALIFIERS

HS Results are from sample aliquot taken from VOA vial with headspace (air bubble greater than 6 mm diameter).

## REPORT OF LABORATORY ANALYSIS

This report shall not be reproduced, except in full,  
without the written consent of Pace Analytical Services, LLC.





### QUALITY CONTROL DATA CROSS REFERENCE TABLE

Project: 27823 FMR FABRICARE

Pace Project No.: 40278294

Lab ID	Sample ID	QC Batch Method	QC Batch	Analytical Method	Analytical Batch
40278294001	MW-12	EPA 8260	474556		
40278294002	MW-10	EPA 8260	474556		
40278294003	MW-11	EPA 8260	474556		
40278294004	MW-8	EPA 8260	474556		
40278294005	MW-13	EPA 8260	474556		
40278294006	MW-7	EPA 8260	474556		
40278294007	PZ-1R	EPA 8260	474556		
40278294008	MW-2R	EPA 8260	474556		
40278294009	MW-4R	EPA 8260	474556		
40278294010	IW-3	EPA 8260	474749		
40278294011	IW-4	EPA 8260	474749		
40278294012	MW-1	EPA 8260	474749		
40278294013	MW-5	EPA 8260	474556		
40278294014	DUPLICATE	EPA 8260	474749		
40278294015	TRIP BLANK	EPA 8260	474556		

### REPORT OF LABORATORY ANALYSIS

This report shall not be reproduced, except in full, without the written consent of Pace Analytical Services, LLC.



Pace® Location Requested (City/State):  
Pace Analytical Green Bay  
1241 Bellevue Street, Suite 9  
Green Bay, WI 54302

### CHAIN-OF-CUSTODY Analytical Request Document

Chain-of-Custody is a LEGAL DOCUMENT - Complete all relevant fields

LAB USE ONLY- Affix Workorder/Login Label Here



40278294

Scan QR Code for instructions

Company Name: KPRG AND ASSOCIATES, INC.	Contact/Report To: Rich Gnat
Street Address: 14665 W. Lisbon Road, Suite 1A Brookfield, WI 53005	Phone #: 262-781-0475
	E-Mail: richardg@kprginc.com
	Cc E-Mail:
Customer Project #	Invoice To: AP-Attn Kelly
Project Name: 27823 FMR FABRICARE	Invoice E-Mail: admindesk@kprginc.com
Site Collection Info/Facility ID (as applicable):	Purchase Order # (if applicable):
	Quote #:

Specify Container Size **	**Container Size: (1) 1L, (2) 500mL, (3) 250mL, (4) 125mL, (5) 100mL, (6) 40mL vial, (7) EnCore, (8) TerraCore, (9) 90mL, (10) Other
Identify Container Preservative Type***	*** Preservative Types (1) None, (2) HNO3, (3) H2SO4, (4) HCl, (5) NaOH, (6) Zn Acetate, (7) NaHSO4, (8) Sod Thiosulfate, (9) Ascorbic Acid, (10) MeOH, (11) Other
Analysis Requested	

Time Zone Collected: [ ] AK [ ] PT [ ] MT [X] CT [ ] ET	County / State origin of sample(s): Wisconsin
Data Deliverables: [ ] Level II [ ] Level III [ ] Level IV [ ] EQUIS [ ] Other	Regulatory Program (DW, RCRA, etc.) as applicable: Reportable [ ] Yes [ ] No
	Rush (Pre-approval required): [ ] Same Day [ ] 1 Day [ ] 2 Day [ ] 3 Day [ ] Other
	DW PWSID # or WW Permit # as applicable:
Date Results Requested: Standard	Field Filtered (if applicable): [ ] Yes [X] No
	Analysis:

\* Matrix Codes (Insert in Matrix box below): Drinking Water (DW), Ground Water (GW), Waste Water (WW), Product (P), Soil/Solid (SS), Oil (OL), Wipe (WP), Tissue (TS), Bioassay (B), Vapor (V), Surface Water (SW), Sediment (SED), Sludge (SL), Caulk (CK), Leachate (LL), Biosolid (BS), Other (OT)

Customer Sample ID	Matrix *	Comp / Grab	Composite Start		Collected or Composite End		# Cont.	Res. Chlorine Results	Units	8260 CVOC	Sample Comment
			Date	Time	Date	Time					
MW-12	GW	G			5/13/24	1205	3			X	001
MW-10					5/13/24	1252					002
MW-11					5/13/24	1330					003
MW-8					5/13/24	1440					004
MW-13					5/13/24	1506					005
MW-7					5/14/24	0915					006
PZ-1R					5/14/24	0959					007
MW-2R					5/14/24	1030					008
MW-4R					5/14/24	1059					009
IW-3					5/14/24	1131					010

Additional Instructions from Pace*:	Collected By: (Printed Name) Kaelyn Sperle Signature: Kaelyn Sperle
-------------------------------------	--

Customer Remarks / Special Conditions / Possible Hazards:	# Copiers: 1	Thermometer ID: 137	Correction Factor (°C): 0.0	Obs. Temp (°C): 0.0	Corrected Temp (°C): 0.0	On Ice: Y
---	--------------	---------------------	-----------------------------	---------------------	--------------------------	-----------

Relinquished by/Company (Signature): Kaelyn Sperle/KPRG	Date/Time: 5/14/24/1500	Received by/Company (Signature): CS Logistics	Date/Time: 5/14/24/1500	Tracking Number:
Relinquished by/Company (Signature): CS Logistics	Date/Time: 05/15/24 0840	Received by/Company (Signature): Susan Klyne Pau	Date/Time: 05/15/24 0840	Delivered by: [ ] In-Person [ ] Courier
Relinquished by/Company (Signature):	Date/Time:	Received by/Company (Signature):	Date/Time:	[ ] FedEx [ ] UPS [ ] Other
Relinquished by/Company (Signature):	Date/Time:	Received by/Company (Signature):	Date/Time:	Page: 1 of 2

Pace® Location Requested (City/State):  
Pace Analytical Green Bay  
1241 Bellevue Street, Suite 9  
Green Bay, WI 54302

### CHAIN-OF-CUSTODY Analytical Request Document

Chain-of-Custody is a LEGAL DOCUMENT - Complete all relevant fields

Company Name: KPRG AND ASSOCIATES, INC.	Contact/Report To: Rich Gnat
Street Address: 14665 W. Lisbon Road, Suite 1A Brookfield, WI 53005	Phone #: 262-781-0475
	E-Mail: richardg@kprginc.com
	Cc E-Mail:
Customer Project #:	
Project Name: 27823 FMR FABRICARE	Invoice To: AP-Attn Kelly
	Invoice E-Mail: admindesk@kprginc.com
Site Collection Info/Facility ID (as applicable):	Purchase Order # (if applicable):
	Quote #:

LAB USE ONLY - Affix Workorder/Login Label Here

40278294

Scan QR Code for instructions

Time Zone Collected: [ ] AK [ ] PT [ ] MT  CT [ ] ET

Data Deliverables: [ ] Level II [ ] Level III [ ] Level IV [ ] EQUIS [ ] Other

Regulatory Program (DW, RCRA, etc.) as applicable: Reportable [ ] Yes [ ] No

Rush (Pre-approval required): [ ] Same Day [ ] 1 Day [ ] 2 Day [ ] 3 Day [ ] Other

Date Results Requested: **Standard**

Field Filtered (if applicable): [ ] Yes  No

Specify Container Size \*\*

Identify Container Preservative Type\*\*\*

Analysis Requested

\* Matrix Codes (Insert in Matrix box below): Drinking Water (DW), Ground Water (GW), Waste Water (WW), Product (P), Soil/Solid (SS), Oil (OL), Wipe (WP), Tissue (TS), Bioassay (B), Vapor (V), Surface Water (SW), Sediment (SED), Sludge (SL), Caulk (CK), Leachate (LL), Biosolid (BS), Other (OT)

Customer Sample ID	Matrix *	Comp / Grab	Composite Start		Collected or Composite End		# Cont.	Res. Chlorine		8260 CVOC
			Date	Time	Date	Time		Results	Units	
IW-4	GW	G			5/14/24	1214	3			X
MW-1					5/14/24	1241				
MW-5					5/14/24	1314				
Duplicate	GW	G			5/14/24	-				
Temp blank										
trip blank										X

Proj. Mgr: **Dan Milewsky**

AcctNum / Client ID:

Table #:

Profile / Template: **463**

Prelog / Bottle Ord. ID: **EZ 3091096**

Sample Comment

Preservation non-conformance identified for sample.

Additional Instructions from Pace\*:

Collected By: (Printed Name) **Kaelyn Sperte**

Signature: *Kaelyn Sperte*

Customer Remarks / Special Conditions / Possible Hazards:

# Coolers: 1 Thermometer ID: 137 Correction Factor (°C): 00 Obs. Temp (°C): 00 Corrected Temp. (°C): 0.0 On Ice:

Relinquished by/Company: (Signature) <i>Kaelyn Sperte/KPRG</i>	Date/Time: 5/14/24/1500	Received by/Company: (Signature) <i>CS Logistics</i>	Date/Time: 5/14/24/1500
Relinquished by/Company: (Signature) <i>CS Logistics</i>	Date/Time: 05/15/24 0840	Received by/Company: (Signature) <i>Susan Klyne</i>	Date/Time: 05/15/24 0840
Relinquished by/Company: (Signature)	Date/Time:	Received by/Company: (Signature)	Date/Time:

Tracking Number:

Delivered by: [ ] In-Person [ ] Courier

[ ] FedEx [ ] UPS [ ] Other

Page: 2 of 2



Sample Condition Upon Receipt Form (SCUR)

Project #:

Client Name: KPRG

WO#: 40278294

Courier:  CS Logistics  Fed Ex  Speedee  UPS  Walco  
 Client  Pace Other: \_\_\_\_\_



Tracking #: \_\_\_\_\_

Custody Seal on Cooler/Box Present:  yes  no Seals intact:  yes  no

Custody Seal on Samples Present:  yes  no Seals intact:  yes  no

Packing Material:  Bubble Wrap  Bubble Bags  None  Other

Thermometer Used SR - 13.7 Type of Ice: Wet Blue Dry None  Meltwater Only

Cooler Temperature Uncorr. 0.0 / Corr. 0.0

Temp Blank Present:  yes  no Biological Tissue is Frozen:  yes  no

Person examining contents:  
 Date: 05/15/24 / Initials: SEW

Temp should be above freezing to 6°C.  
 Biota Samples may be received at ≤ 0°C if shipped on Dry Ice.

Labeled By Initials: MLA

Chain of Custody Present:	<input checked="" type="checkbox"/> Yes <input type="checkbox"/> No <input type="checkbox"/> N/A	1.
Chain of Custody Filled Out:	<input checked="" type="checkbox"/> Yes <input type="checkbox"/> No <input type="checkbox"/> N/A	2.
Chain of Custody Relinquished:	<input checked="" type="checkbox"/> Yes <input type="checkbox"/> No <input type="checkbox"/> N/A	3.
Sampler Name & Signature on COC:	<input checked="" type="checkbox"/> Yes <input type="checkbox"/> No <input type="checkbox"/> N/A	4.
Samples Arrived within Hold Time:	<input checked="" type="checkbox"/> Yes <input type="checkbox"/> No	5.
- DI VOA Samples frozen upon receipt	<input type="checkbox"/> Yes <input type="checkbox"/> No	Date/Time:
Short Hold Time Analysis (<72hr):	<input type="checkbox"/> Yes <input checked="" type="checkbox"/> No	6.
Rush Turn Around Time Requested:	<input type="checkbox"/> Yes <input checked="" type="checkbox"/> No	7.
Sufficient Volume:		8.
For Analysis: <input checked="" type="checkbox"/> Yes <input type="checkbox"/> No MS/MSD: <input type="checkbox"/> Yes <input checked="" type="checkbox"/> No <input type="checkbox"/> N/A		
Correct Containers Used:	<input checked="" type="checkbox"/> Yes <input type="checkbox"/> No	9.
Correct Type: <u>Pace Green Bay</u> Pace IR, Non-Pace		
Containers Intact:	<input checked="" type="checkbox"/> Yes <input type="checkbox"/> No	10.
Filtered volume received for Dissolved tests	<input type="checkbox"/> Yes <input type="checkbox"/> No <input checked="" type="checkbox"/> N/A	11.
Sample Labels match COC:	<input checked="" type="checkbox"/> Yes <input type="checkbox"/> No <input type="checkbox"/> N/A	12.
-Includes date/time/ID/Analysis Matrix: <u>W</u>		
Trip Blank Present:	<input checked="" type="checkbox"/> Yes <input type="checkbox"/> No <input type="checkbox"/> N/A	13.
Trip Blank Custody Seals Present	<input checked="" type="checkbox"/> Yes <input type="checkbox"/> No <input type="checkbox"/> N/A	
Pace Trip Blank Lot # (if purchased): <u>517</u>		

Client Notification/ Resolution: \_\_\_\_\_ If checked, see attached form for additional comments

Person Contacted: \_\_\_\_\_ Date/Time: \_\_\_\_\_

Comments/ Resolution: \_\_\_\_\_

PM Review is documented electronically in LIMs. By releasing the project, the PM acknowledges they have reviewed the sample logir