



April 28, 2017

Ms. Jennifer Borski
Wisconsin Department of Natural Resources
625 East County Road Y, STE 700
Oshkosh, Wisconsin 54901-9731

**RE: Results of Groundwater Sampling for VOC's
Appleton Wire (Former)
908 N. Lawe Street
Appleton, Wisconsin 54911
WDNR BRRTS #: 02-45-000015**

Dear Ms. Borski:

Per your request, select groundwater samples were collected and analyzed for total volatile organic compounds (VOC's) on April 5, 2017. The samples were collected by John Stoeger of Stoeger & Associates, LLC during his routine 2nd quarter groundwater sampling for chromium. John collected the samples using dedicated submersible pumps and the samples were preserved in the field using hydrochloric acid. The samples were analyzed by Pace Analytical Laboratories located in Green Bay, Wisconsin, according to EPA Method 8260.

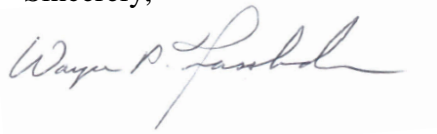
I have attached Figure 1 showing the locations of groundwater samples collected for VOC analysis and the detected VOC's at each sample location. I have also attached the laboratory results report. Note that the laboratory report contains the results of chromium analysis, as well. A semi-annual report of groundwater sampling and remedial system operation, maintenance, and monitoring will be submitted to you in late June or early July under separate cover.

As can be seen on Figure 1 and in the laboratory report, several chlorinated volatile organic compounds were detected at low concentrations. Tetrachloroethene (PCE) was detected in MW-19 at a concentration just exceeding the NR 140 groundwater enforcement standard.

Due to these detections, and per your request, additional soil and groundwater samples will be collected for total VOC analysis inside the warehouse area during the upcoming planned site investigations to be performed in May and June of this year.

If you have any questions regarding the contents of this letter report, please feel free to contact me at (414) 982-3988 or wfassbender@enviroforensics.com.

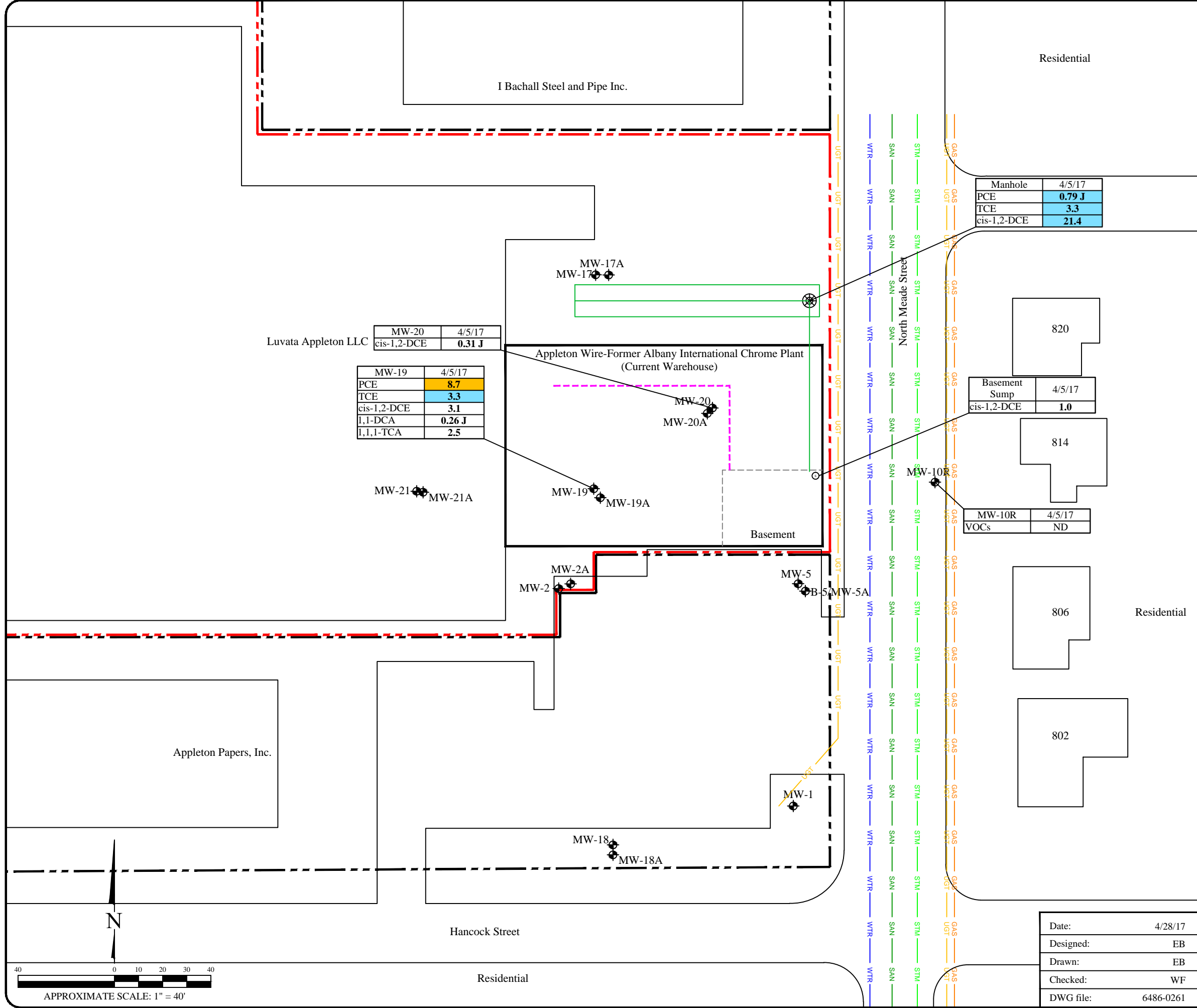
Sincerely,

A handwritten signature in black ink that reads "Wayne P. Fassbender".

Wayne P. Fassbender, P.G., PMP
Senior Project Manager

Attachments: Figure 1
Pace Analytical Laboratory Report

cc (via email): JP Hammerton, Albany International
Joseph Gaug, Albany International



Manhole	4/5/17
PCE	0.79 J
TCE	3.3
cis-1,2-DCE	21.4

MW-20	4/5/17
cis-1,2-DCE	0.31 J

MW-19	4/5/17
PCE	8.7
TCE	3.3
cis-1,2-DCE	3.1
1,1-DCA	0.26 J
1,1,1-TCA	2.5

Basement Sump	4/5/17
cis-1,2-DCE	1.0

MW-10R	4/5/17
VOCs	ND

Legend

- Property boundary
- GAS Underground gas utility line
- WTR Underground water utility line
- SAN Underground sanitary utility line
- UGT Fiber optics line
- STM Underground storm utility line
- Pipe chase
- French drain and associated piping
- Basement sump
- French drain manhole

Analyte	Public Health Preventive Action Limit	Public Health Enforcement Standard
PCE	0.5	5
TCE	0.5	5
cis-1,2-DCE	7	70
trans-1,2-DCE	20	100
1,1-DCA	85	850
1,1,1-TCA	40	200

- Note:
- Bolded and orange shaded values exceed the Public Health Enforcement Standard
 - Bolded and blue shaded values exceed the Public Health Preventive Action Limit
 - Bolded values are above detection limits
 - J = Analyte concentration less than laboratory detection limits
 - Samples analyzed using EPA SW-846 Method 8260
 - All results reported in units of micrograms per liter (µg/L)
 - PCE = Tetrachloroethene
 - TCE = Trichloroethene
 - cis-1,2-DCE = cis-1,2-Dichloroethene
 - trans-1,2-DCE = trans-1,2-Dichloroethene
 - 1,1-DCA = 1,1-Dichloroethane
 - 1,1,1-TCA = 1,1,1-Trichloroethane
 - VOCs = Volatile Organic Compounds
 - ND = Not detected above laboratory detection limits

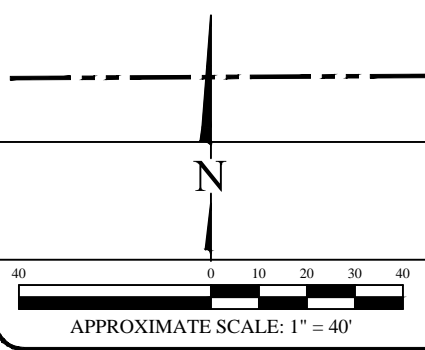
DETECTED VOCs IN SELECT GROUNDWATER SAMPLES

Albany International - Luvata Site
908 North Lawe Street
Appleton, Wisconsin

Date:	4/28/17
Designed:	EB
Drawn:	EB
Checked:	WF
DWG file:	6486-0261

ENVIRONMENTAL FORENSIC INVESTIGATIONS, INC.
825 North Capitol Avenue • Indianapolis, IN 46204
EnviroForensics.com

Figure	1
Project	6486



April 14, 2017

Wayne Fassbender
Enviroforensics
N16 W23390 Stone Ridge Drive
Suite G
Waukesha, WI 53188

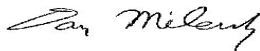
RE: Project: 17-100 ALBANY FMR CHROME PLANT
Pace Project No.: 40147765

Dear Wayne Fassbender:

Enclosed are the analytical results for sample(s) received by the laboratory on April 05, 2017. The results relate only to the samples included in this report. Results reported herein conform to the most current, applicable TNI/NELAC standards and the laboratory's Quality Assurance Manual, where applicable, unless otherwise noted in the body of the report.

If you have any questions concerning this report, please feel free to contact me.

Sincerely,



Dan Milewsky
dan.milewsky@pacelabs.com
(920)469-2436
Project Manager

Enclosures



REPORT OF LABORATORY ANALYSIS

This report shall not be reproduced, except in full,
without the written consent of Pace Analytical Services, LLC.

CERTIFICATIONS

Project: 17-100 ALBANY FMR CHROME PLANT

Pace Project No.: 40147765

Green Bay Certification IDs

1241 Bellevue Street, Green Bay, WI 54302

Florida/NELAP Certification #: E87948

Illinois Certification #: 200050

Kentucky UST Certification #: 82

Louisiana Certification #: 04168

Minnesota Certification #: 055-999-334

New York Certification #: 12064

North Dakota Certification #: R-150

Virginia VELAP ID: 460263

South Carolina Certification #: 83006001

Texas Certification #: T104704529-14-1

Wisconsin Certification #: 405132750

Wisconsin DATCP Certification #: 105-444

USDA Soil Permit #: P330-16-00157

Federal Fish & Wildlife Permit #: LE51774A-0

REPORT OF LABORATORY ANALYSIS

This report shall not be reproduced, except in full,
without the written consent of Pace Analytical Services, LLC.

SAMPLE SUMMARY

Project: 17-100 ALBANY FMR CHROME PLANT

Pace Project No.: 40147765

Lab ID	Sample ID	Matrix	Date Collected	Date Received
40147765001	MW-01	Water	04/05/17 11:00	04/05/17 13:15
40147765002	MW-02	Water	04/05/17 11:00	04/05/17 13:15
40147765003	MW-02A	Water	04/05/17 11:00	04/05/17 13:15
40147765004	MW-05	Water	04/05/17 11:00	04/05/17 13:15
40147765005	MW-05A	Water	04/05/17 11:00	04/05/17 13:15
40147765006	MW-10R	Water	04/05/17 11:00	04/05/17 13:15
40147765007	MW-17	Water	04/05/17 11:00	04/05/17 13:15
40147765008	MW-17A	Water	04/05/17 11:00	04/05/17 13:15
40147765009	MW-18	Water	04/05/17 11:00	04/05/17 13:15
40147765010	MW-18A	Water	04/05/17 11:00	04/05/17 13:15
40147765011	MW-19	Water	04/05/17 11:00	04/05/17 13:15
40147765012	MW-19A	Water	04/05/17 11:00	04/05/17 13:15
40147765013	MW-20	Water	04/05/17 11:00	04/05/17 13:15
40147765014	MW-20A	Water	04/05/17 11:00	04/05/17 13:15
40147765015	MW-21	Water	04/05/17 11:00	04/05/17 13:15
40147765016	MW-21A	Water	04/05/17 11:00	04/05/17 13:15
40147765017	BLIND DUPLICATE	Water	04/05/17 11:00	04/05/17 13:15
40147765018	TRIP BLANK	Water	04/05/17 11:00	04/05/17 13:15
40147765019	MANHOLE	Water	04/05/17 11:00	04/05/17 13:15
40147765020	SUMP	Water	04/05/17 11:00	04/05/17 13:15
40147765021	OUTFALL 001	Water	04/05/17 11:00	04/05/17 13:15
40147765022	CANISTER A	Water	04/05/17 11:00	04/05/17 13:15

REPORT OF LABORATORY ANALYSIS

This report shall not be reproduced, except in full,
without the written consent of Pace Analytical Services, LLC.

SAMPLE ANALYTE COUNT

Project: 17-100 ALBANY FMR CHROME PLANT

Pace Project No.: 40147765

Lab ID	Sample ID	Method	Analysts	Analytes Reported	Laboratory
40147765001	MW-01	EPA 6010	DLB	1	PASI-G
		SM 3500-Cr B (Online)	DEY	1	PASI-G
40147765002	MW-02	EPA 6010	DLB	1	PASI-G
		SM 3500-Cr B (Online)	DEY	1	PASI-G
40147765003	MW-02A	EPA 6010	DLB	1	PASI-G
		SM 3500-Cr B (Online)	DEY	1	PASI-G
40147765004	MW-05	EPA 6010	DLB	1	PASI-G
		SM 3500-Cr B (Online)	DEY	1	PASI-G
40147765005	MW-05A	EPA 6010	DLB	1	PASI-G
		SM 3500-Cr B (Online)	DEY	1	PASI-G
40147765006	MW-10R	EPA 6010	DLB	1	PASI-G
		EPA 8260	HNW	64	PASI-G
		SM 3500-Cr B (Online)	DEY	1	PASI-G
40147765007	MW-17	EPA 6010	DLB	1	PASI-G
		SM 3500-Cr B (Online)	DEY	1	PASI-G
40147765008	MW-17A	EPA 6010	DLB	1	PASI-G
		SM 3500-Cr B (Online)	DEY	1	PASI-G
40147765009	MW-18	EPA 6010	DLB	1	PASI-G
		SM 3500-Cr B (Online)	DEY	1	PASI-G
40147765010	MW-18A	EPA 6010	DLB	1	PASI-G
		SM 3500-Cr B (Online)	DEY	1	PASI-G
40147765011	MW-19	EPA 6010	DLB	1	PASI-G
		EPA 8260	HNW	64	PASI-G
		SM 3500-Cr B (Online)	DEY	1	PASI-G
40147765012	MW-19A	EPA 6010	DLB	1	PASI-G
		SM 3500-Cr B (Online)	DEY	1	PASI-G
40147765013	MW-20	EPA 6010	DLB	1	PASI-G
		EPA 8260	HNW	64	PASI-G
		SM 3500-Cr B (Online)	DEY	1	PASI-G
40147765014	MW-20A	EPA 6010	DLB	1	PASI-G
		SM 3500-Cr B (Online)	DEY	1	PASI-G
40147765015	MW-21	EPA 6010	DLB	1	PASI-G
		SM 3500-Cr B (Online)	DEY	1	PASI-G
40147765016	MW-21A	EPA 6010	DLB	1	PASI-G
		SM 3500-Cr B (Online)	DEY	1	PASI-G
40147765017	BLIND DUPLICATE	EPA 6010	DLB	1	PASI-G
		SM 3500-Cr B (Online)	DEY	1	PASI-G

REPORT OF LABORATORY ANALYSIS

This report shall not be reproduced, except in full,
without the written consent of Pace Analytical Services, LLC.

SAMPLE ANALYTE COUNT

Project: 17-100 ALBANY FMR CHROME PLANT

Pace Project No.: 40147765

Lab ID	Sample ID	Method	Analysts	Analytes Reported	Laboratory
40147765018	TRIP BLANK	EPA 8260	HNW	64	PASI-G
40147765019	MANHOLE	EPA 6010	DLB	1	PASI-G
		EPA 8260	HNW	64	PASI-G
		SM 3500-Cr B (Online)	DEY	1	PASI-G
40147765020	SUMP	EPA 6010	DLB	1	PASI-G
		EPA 8260	HNW	64	PASI-G
		SM 3500-Cr B (Online)	DEY	1	PASI-G
40147765021	OUTFALL 001	EPA 6010	DLB	8	PASI-G
		EPA 7470	AJT	1	PASI-G
		SM 3500-Cr B (Online)	DEY	1	PASI-G
		EPA 335.4	DAW	1	PASI-G
40147765022	CANISTER A	EPA 6010	DLB	1	PASI-G

REPORT OF LABORATORY ANALYSIS

This report shall not be reproduced, except in full,
without the written consent of Pace Analytical Services, LLC.

SUMMARY OF DETECTION

Project: 17-100 ALBANY FMR CHROME PLANT

Pace Project No.: 40147765

Lab Sample ID Method	Client Sample ID Parameters	Result	Units	Report Limit	Analyzed	Qualifiers
40147765004	MW-05					
EPA 6010	Chromium, Dissolved	234	ug/L	10.0	04/13/17 11:22	
SM 3500-Cr B (Online)	Chromium, Hexavalent, Dissolved	0.24	mg/L	0.020	04/05/17 16:00	
40147765008	MW-17A					
EPA 6010	Chromium, Dissolved	44.2	ug/L	10.0	04/13/17 11:38	
40147765010	MW-18A					
EPA 6010	Chromium, Dissolved	14.8	ug/L	10.0	04/13/17 11:44	
40147765011	MW-19					
EPA 6010	Chromium, Dissolved	24700	ug/L	10.0	04/13/17 11:47	
EPA 8260	1,1-Dichloroethane	0.26J	ug/L	1.0	04/07/17 11:50	
EPA 8260	cis-1,2-Dichloroethene	3.1	ug/L	1.0	04/07/17 11:50	
EPA 8260	Tetrachloroethene	8.7	ug/L	1.0	04/07/17 11:50	
EPA 8260	1,1,1-Trichloroethane	2.5	ug/L	1.0	04/07/17 11:50	
EPA 8260	Trichloroethene	3.3	ug/L	1.0	04/07/17 11:50	
SM 3500-Cr B (Online)	Chromium, Hexavalent, Dissolved	25.0	mg/L	5.0	04/05/17 16:00	
40147765012	MW-19A					
EPA 6010	Chromium, Dissolved	4.2J	ug/L	10.0	04/13/17 11:49	
40147765013	MW-20					
EPA 6010	Chromium, Dissolved	262000	ug/L	100	04/13/17 13:42	
EPA 8260	cis-1,2-Dichloroethene	0.31J	ug/L	1.0	04/07/17 12:13	
SM 3500-Cr B (Online)	Chromium, Hexavalent, Dissolved	242	mg/L	10.0	04/05/17 16:00	
40147765014	MW-20A					
EPA 6010	Chromium, Dissolved	23.1	ug/L	10.0	04/13/17 11:55	
40147765017	BLIND DUPLICATE					
EPA 6010	Chromium, Dissolved	254000	ug/L	100	04/13/17 13:44	
SM 3500-Cr B (Online)	Chromium, Hexavalent, Dissolved	248	mg/L	10.0	04/05/17 16:00	
40147765019	MANHOLE					
EPA 6010	Chromium	1720	ug/L	10.0	04/07/17 16:05	
EPA 8260	cis-1,2-Dichloroethene	21.4	ug/L	1.0	04/07/17 14:30	
EPA 8260	trans-1,2-Dichloroethene	0.58J	ug/L	1.0	04/07/17 14:30	
EPA 8260	Tetrachloroethene	0.79J	ug/L	1.0	04/07/17 14:30	
EPA 8260	Trichloroethene	3.3	ug/L	1.0	04/07/17 14:30	
SM 3500-Cr B (Online)	Chromium, Hexavalent	1.9	mg/L	0.17	04/05/17 16:00	
40147765020	SUMP					
EPA 6010	Chromium	11400	ug/L	10.0	04/07/17 16:08	
EPA 8260	cis-1,2-Dichloroethene	1.0	ug/L	1.0	04/07/17 17:33	
SM 3500-Cr B (Online)	Chromium, Hexavalent	12.2	mg/L	4.3	04/05/17 16:00	1q
40147765021	OUTFALL 001					
EPA 6010	Aluminum	91.4J	ug/L	500	04/07/17 15:51	
EPA 6010	Chromium	67.4	ug/L	10.0	04/07/17 15:51	
EPA 6010	Copper	10.6J	ug/L	20.0	04/07/17 15:51	
EPA 6010	Nickel	3.0J	ug/L	10.0	04/07/17 15:51	

REPORT OF LABORATORY ANALYSIS

This report shall not be reproduced, except in full,
without the written consent of Pace Analytical Services, LLC.

SUMMARY OF DETECTION

Project: 17-100 ALBANY FMR CHROME PLANT

Pace Project No.: 40147765

Lab Sample ID Method	Client Sample ID Parameters	Result	Units	Report Limit	Analyzed	Qualifiers
40147765021	OUTFALL 001					
EPA 6010	Zinc	15.2J	ug/L	40.0	04/07/17 15:51	
SM 3500-Cr B (Online)	Chromium, Hexavalent	0.068	mg/L	0.017	04/05/17 16:00	
40147765022	CANISTER A					
EPA 6010	Chromium	890	ug/L	10.0	04/07/17 16:11	

REPORT OF LABORATORY ANALYSIS

This report shall not be reproduced, except in full,
without the written consent of Pace Analytical Services, LLC.

ANALYTICAL RESULTS

Project: 17-100 ALBANY FMR CHROME PLANT

Pace Project No.: 40147765

Sample: MW-01 **Lab ID: 40147765001** Collected: 04/05/17 11:00 Received: 04/05/17 13:15 Matrix: Water

Parameters	Results	Units	LOQ	LOD	DF	Prepared	Analyzed	CAS No.	Qual
6010 MET ICP, Dissolved	Analytical Method: EPA 6010								
Chromium, Dissolved	<2.5	ug/L	10.0	2.5	1		04/13/17 11:09	7440-47-3	
Chromium, Dissolved Hexavalent	Analytical Method: SM 3500-Cr B (Online)								
Chromium, Hexavalent, Dissolved	<0.0039	mg/L	0.020	0.0039	1		04/05/17 16:00		1q

REPORT OF LABORATORY ANALYSIS

This report shall not be reproduced, except in full,
without the written consent of Pace Analytical Services, LLC.

ANALYTICAL RESULTS

Project: 17-100 ALBANY FMR CHROME PLANT

Pace Project No.: 40147765

Sample: MW-02 **Lab ID: 40147765002** Collected: 04/05/17 11:00 Received: 04/05/17 13:15 Matrix: Water

Parameters	Results	Units	LOQ	LOD	DF	Prepared	Analyzed	CAS No.	Qual
6010 MET ICP, Dissolved	Analytical Method: EPA 6010								
Chromium, Dissolved	<2.5	ug/L	10.0	2.5	1		04/13/17 11:17	7440-47-3	
Chromium, Dissolved Hexavalent	Analytical Method: SM 3500-Cr B (Online)								
Chromium, Hexavalent, Dissolved	<0.0039	mg/L	0.020	0.0039	1		04/05/17 16:00		1q

REPORT OF LABORATORY ANALYSIS

This report shall not be reproduced, except in full,
without the written consent of Pace Analytical Services, LLC.

ANALYTICAL RESULTS

Project: 17-100 ALBANY FMR CHROME PLANT
Pace Project No.: 40147765

Sample: MW-02A **Lab ID: 40147765003** Collected: 04/05/17 11:00 Received: 04/05/17 13:15 Matrix: Water

Parameters	Results	Units	LOQ	LOD	DF	Prepared	Analyzed	CAS No.	Qual
6010 MET ICP, Dissolved	Analytical Method: EPA 6010								
Chromium, Dissolved	<2.5	ug/L	10.0	2.5	1		04/13/17 11:19	7440-47-3	
Chromium, Dissolved Hexavalent	Analytical Method: SM 3500-Cr B (Online)								
Chromium, Hexavalent, Dissolved	<0.0039	mg/L	0.020	0.0039	1		04/05/17 16:00		1q

REPORT OF LABORATORY ANALYSIS

This report shall not be reproduced, except in full,
without the written consent of Pace Analytical Services, LLC.

ANALYTICAL RESULTS

Project: 17-100 ALBANY FMR CHROME PLANT

Pace Project No.: 40147765

Sample: MW-05 **Lab ID: 40147765004** Collected: 04/05/17 11:00 Received: 04/05/17 13:15 Matrix: Water

Parameters	Results	Units	LOQ	LOD	DF	Prepared	Analyzed	CAS No.	Qual
6010 MET ICP, Dissolved	Analytical Method: EPA 6010								
Chromium, Dissolved	234	ug/L	10.0	2.5	1		04/13/17 11:22	7440-47-3	
Chromium, Dissolved Hexavalent	Analytical Method: SM 3500-Cr B (Online)								
Chromium, Hexavalent, Dissolved	0.24	mg/L	0.020	0.0039	1		04/05/17 16:00		

REPORT OF LABORATORY ANALYSIS

This report shall not be reproduced, except in full,
without the written consent of Pace Analytical Services, LLC.

ANALYTICAL RESULTS

Project: 17-100 ALBANY FMR CHROME PLANT

Pace Project No.: 40147765

Sample: MW-05A **Lab ID: 40147765005** Collected: 04/05/17 11:00 Received: 04/05/17 13:15 Matrix: Water

Parameters	Results	Units	LOQ	LOD	DF	Prepared	Analyzed	CAS No.	Qual
6010 MET ICP, Dissolved	Analytical Method: EPA 6010								
Chromium, Dissolved	<2.5	ug/L	10.0	2.5	1		04/13/17 11:25	7440-47-3	
Chromium, Dissolved Hexavalent	Analytical Method: SM 3500-Cr B (Online)								
Chromium, Hexavalent, Dissolved	<0.0039	mg/L	0.020	0.0039	1		04/05/17 16:00		1q

REPORT OF LABORATORY ANALYSIS

This report shall not be reproduced, except in full,
without the written consent of Pace Analytical Services, LLC.

ANALYTICAL RESULTS

Project: 17-100 ALBANY FMR CHROME PLANT

Pace Project No.: 40147765

Sample: MW-10R **Lab ID: 40147765006** Collected: 04/05/17 11:00 Received: 04/05/17 13:15 Matrix: Water

Parameters	Results	Units	LOQ	LOD	DF	Prepared	Analyzed	CAS No.	Qual
6010 MET ICP, Dissolved		Analytical Method: EPA 6010							
Chromium, Dissolved	<2.5	ug/L	10.0	2.5	1		04/13/17 11:33	7440-47-3	
8260 MSV		Analytical Method: EPA 8260							
Benzene	<0.50	ug/L	1.0	0.50	1		04/07/17 14:07	71-43-2	
Bromobenzene	<0.23	ug/L	1.0	0.23	1		04/07/17 14:07	108-86-1	
Bromochloromethane	<0.34	ug/L	1.0	0.34	1		04/07/17 14:07	74-97-5	
Bromodichloromethane	<0.50	ug/L	1.0	0.50	1		04/07/17 14:07	75-27-4	
Bromoform	<0.50	ug/L	1.0	0.50	1		04/07/17 14:07	75-25-2	
Bromomethane	<2.4	ug/L	5.0	2.4	1		04/07/17 14:07	74-83-9	
n-Butylbenzene	<0.50	ug/L	1.0	0.50	1		04/07/17 14:07	104-51-8	
sec-Butylbenzene	<2.2	ug/L	5.0	2.2	1		04/07/17 14:07	135-98-8	
tert-Butylbenzene	<0.18	ug/L	1.0	0.18	1		04/07/17 14:07	98-06-6	
Carbon tetrachloride	<0.50	ug/L	1.0	0.50	1		04/07/17 14:07	56-23-5	
Chlorobenzene	<0.50	ug/L	1.0	0.50	1		04/07/17 14:07	108-90-7	
Chloroethane	<0.37	ug/L	1.0	0.37	1		04/07/17 14:07	75-00-3	
Chloroform	<2.5	ug/L	5.0	2.5	1		04/07/17 14:07	67-66-3	
Chloromethane	<0.50	ug/L	1.0	0.50	1		04/07/17 14:07	74-87-3	
2-Chlorotoluene	<0.50	ug/L	1.0	0.50	1		04/07/17 14:07	95-49-8	
4-Chlorotoluene	<0.21	ug/L	1.0	0.21	1		04/07/17 14:07	106-43-4	
1,2-Dibromo-3-chloropropane	<2.2	ug/L	5.0	2.2	1		04/07/17 14:07	96-12-8	
Dibromochloromethane	<0.50	ug/L	1.0	0.50	1		04/07/17 14:07	124-48-1	
1,2-Dibromoethane (EDB)	<0.18	ug/L	1.0	0.18	1		04/07/17 14:07	106-93-4	
Dibromomethane	<0.43	ug/L	1.0	0.43	1		04/07/17 14:07	74-95-3	
1,2-Dichlorobenzene	<0.50	ug/L	1.0	0.50	1		04/07/17 14:07	95-50-1	
1,3-Dichlorobenzene	<0.50	ug/L	1.0	0.50	1		04/07/17 14:07	541-73-1	
1,4-Dichlorobenzene	<0.50	ug/L	1.0	0.50	1		04/07/17 14:07	106-46-7	
Dichlorodifluoromethane	<0.22	ug/L	1.0	0.22	1		04/07/17 14:07	75-71-8	
1,1-Dichloroethane	<0.24	ug/L	1.0	0.24	1		04/07/17 14:07	75-34-3	
1,2-Dichloroethane	<0.17	ug/L	1.0	0.17	1		04/07/17 14:07	107-06-2	
1,1-Dichloroethene	<0.41	ug/L	1.0	0.41	1		04/07/17 14:07	75-35-4	
cis-1,2-Dichloroethene	<0.26	ug/L	1.0	0.26	1		04/07/17 14:07	156-59-2	
trans-1,2-Dichloroethene	<0.26	ug/L	1.0	0.26	1		04/07/17 14:07	156-60-5	
1,2-Dichloropropane	<0.23	ug/L	1.0	0.23	1		04/07/17 14:07	78-87-5	
1,3-Dichloropropane	<0.50	ug/L	1.0	0.50	1		04/07/17 14:07	142-28-9	
2,2-Dichloropropane	<0.48	ug/L	1.0	0.48	1		04/07/17 14:07	594-20-7	
1,1-Dichloropropene	<0.44	ug/L	1.0	0.44	1		04/07/17 14:07	563-58-6	
cis-1,3-Dichloropropene	<0.50	ug/L	1.0	0.50	1		04/07/17 14:07	10061-01-5	
trans-1,3-Dichloropropene	<0.23	ug/L	1.0	0.23	1		04/07/17 14:07	10061-02-6	
Diisopropyl ether	<0.50	ug/L	1.0	0.50	1		04/07/17 14:07	108-20-3	
Ethylbenzene	<0.50	ug/L	1.0	0.50	1		04/07/17 14:07	100-41-4	
Hexachloro-1,3-butadiene	<2.1	ug/L	5.0	2.1	1		04/07/17 14:07	87-68-3	
Isopropylbenzene (Cumene)	<0.14	ug/L	1.0	0.14	1		04/07/17 14:07	98-82-8	
p-Isopropyltoluene	<0.50	ug/L	1.0	0.50	1		04/07/17 14:07	99-87-6	
Methylene Chloride	<0.23	ug/L	1.0	0.23	1		04/07/17 14:07	75-09-2	
Methyl-tert-butyl ether	<0.17	ug/L	1.0	0.17	1		04/07/17 14:07	1634-04-4	
Naphthalene	<2.5	ug/L	5.0	2.5	1		04/07/17 14:07	91-20-3	

REPORT OF LABORATORY ANALYSIS

This report shall not be reproduced, except in full,
without the written consent of Pace Analytical Services, LLC.

ANALYTICAL RESULTS

Project: 17-100 ALBANY FMR CHROME PLANT

Pace Project No.: 40147765

Sample: MW-10R **Lab ID: 40147765006** Collected: 04/05/17 11:00 Received: 04/05/17 13:15 Matrix: Water

Parameters	Results	Units	LOQ	LOD	DF	Prepared	Analyzed	CAS No.	Qual
8260 MSV Analytical Method: EPA 8260									
n-Propylbenzene	<0.50	ug/L	1.0	0.50	1		04/07/17 14:07	103-65-1	
Styrene	<0.50	ug/L	1.0	0.50	1		04/07/17 14:07	100-42-5	
1,1,1,2-Tetrachloroethane	<0.18	ug/L	1.0	0.18	1		04/07/17 14:07	630-20-6	
1,1,2,2-Tetrachloroethane	<0.25	ug/L	1.0	0.25	1		04/07/17 14:07	79-34-5	
Tetrachloroethene	<0.50	ug/L	1.0	0.50	1		04/07/17 14:07	127-18-4	
Toluene	<0.50	ug/L	1.0	0.50	1		04/07/17 14:07	108-88-3	
1,2,3-Trichlorobenzene	<2.1	ug/L	5.0	2.1	1		04/07/17 14:07	87-61-6	
1,2,4-Trichlorobenzene	<2.2	ug/L	5.0	2.2	1		04/07/17 14:07	120-82-1	
1,1,1-Trichloroethane	<0.50	ug/L	1.0	0.50	1		04/07/17 14:07	71-55-6	
1,1,2-Trichloroethane	<0.20	ug/L	1.0	0.20	1		04/07/17 14:07	79-00-5	
Trichloroethene	<0.33	ug/L	1.0	0.33	1		04/07/17 14:07	79-01-6	
Trichlorofluoromethane	<0.18	ug/L	1.0	0.18	1		04/07/17 14:07	75-69-4	
1,2,3-Trichloropropane	<0.50	ug/L	1.0	0.50	1		04/07/17 14:07	96-18-4	
1,2,4-Trimethylbenzene	<0.50	ug/L	1.0	0.50	1		04/07/17 14:07	95-63-6	
1,3,5-Trimethylbenzene	<0.50	ug/L	1.0	0.50	1		04/07/17 14:07	108-67-8	
Vinyl chloride	<0.18	ug/L	1.0	0.18	1		04/07/17 14:07	75-01-4	
m&p-Xylene	<1.0	ug/L	2.0	1.0	1		04/07/17 14:07	179601-23-1	
o-Xylene	<0.50	ug/L	1.0	0.50	1		04/07/17 14:07	95-47-6	
Surrogates									
4-Bromofluorobenzene (S)	88	%	70-130		1		04/07/17 14:07	460-00-4	
Dibromofluoromethane (S)	107	%	70-130		1		04/07/17 14:07	1868-53-7	
Toluene-d8 (S)	88	%	70-130		1		04/07/17 14:07	2037-26-5	
Chromium, Dissolved Hexavalent Analytical Method: SM 3500-Cr B (Online)									
Chromium, Hexavalent, Dissolved	<0.0039	mg/L	0.020	0.0039	1		04/05/17 16:00		1q

REPORT OF LABORATORY ANALYSIS

This report shall not be reproduced, except in full,
without the written consent of Pace Analytical Services, LLC.

ANALYTICAL RESULTS

Project: 17-100 ALBANY FMR CHROME PLANT
Pace Project No.: 40147765

Sample: MW-17 **Lab ID: 40147765007** Collected: 04/05/17 11:00 Received: 04/05/17 13:15 Matrix: Water

Parameters	Results	Units	LOQ	LOD	DF	Prepared	Analyzed	CAS No.	Qual
6010 MET ICP, Dissolved	Analytical Method: EPA 6010								
Chromium, Dissolved	<2.5	ug/L	10.0	2.5	1		04/13/17 11:35	7440-47-3	
Chromium, Dissolved Hexavalent	Analytical Method: SM 3500-Cr B (Online)								
Chromium, Hexavalent, Dissolved	<0.0039	mg/L	0.020	0.0039	1		04/05/17 16:00		1q

REPORT OF LABORATORY ANALYSIS

This report shall not be reproduced, except in full,
without the written consent of Pace Analytical Services, LLC.

ANALYTICAL RESULTS

Project: 17-100 ALBANY FMR CHROME PLANT

Pace Project No.: 40147765

Sample: MW-17A **Lab ID: 40147765008** Collected: 04/05/17 11:00 Received: 04/05/17 13:15 Matrix: Water

Parameters	Results	Units	LOQ	LOD	DF	Prepared	Analyzed	CAS No.	Qual
6010 MET ICP, Dissolved	Analytical Method: EPA 6010								
Chromium, Dissolved	44.2	ug/L	10.0	2.5	1		04/13/17 11:38	7440-47-3	
Chromium, Dissolved Hexavalent	Analytical Method: SM 3500-Cr B (Online)								
Chromium, Hexavalent, Dissolved	<0.0039	mg/L	0.020	0.0039	1		04/05/17 16:00		1q

REPORT OF LABORATORY ANALYSIS

This report shall not be reproduced, except in full,
without the written consent of Pace Analytical Services, LLC.

ANALYTICAL RESULTS

Project: 17-100 ALBANY FMR CHROME PLANT

Pace Project No.: 40147765

Sample: MW-18 **Lab ID: 40147765009** Collected: 04/05/17 11:00 Received: 04/05/17 13:15 Matrix: Water

Parameters	Results	Units	LOQ	LOD	DF	Prepared	Analyzed	CAS No.	Qual
6010 MET ICP, Dissolved	Analytical Method: EPA 6010								
Chromium, Dissolved	<2.5	ug/L	10.0	2.5	1		04/13/17 11:41	7440-47-3	
Chromium, Dissolved Hexavalent	Analytical Method: SM 3500-Cr B (Online)								
Chromium, Hexavalent, Dissolved	<0.0039	mg/L	0.020	0.0039	1		04/05/17 16:00		1q

REPORT OF LABORATORY ANALYSIS

This report shall not be reproduced, except in full,
without the written consent of Pace Analytical Services, LLC.

ANALYTICAL RESULTS

Project: 17-100 ALBANY FMR CHROME PLANT

Pace Project No.: 40147765

Sample: MW-18A **Lab ID: 40147765010** Collected: 04/05/17 11:00 Received: 04/05/17 13:15 Matrix: Water

Parameters	Results	Units	LOQ	LOD	DF	Prepared	Analyzed	CAS No.	Qual
6010 MET ICP, Dissolved	Analytical Method: EPA 6010								
Chromium, Dissolved	14.8	ug/L	10.0	2.5	1		04/13/17 11:44	7440-47-3	
Chromium, Dissolved Hexavalent	Analytical Method: SM 3500-Cr B (Online)								
Chromium, Hexavalent, Dissolved	<0.0039	mg/L	0.020	0.0039	1		04/05/17 16:00		1q

REPORT OF LABORATORY ANALYSIS

This report shall not be reproduced, except in full,
without the written consent of Pace Analytical Services, LLC.

ANALYTICAL RESULTS

Project: 17-100 ALBANY FMR CHROME PLANT

Pace Project No.: 40147765

Sample: **MW-19** Lab ID: **40147765011** Collected: 04/05/17 11:00 Received: 04/05/17 13:15 Matrix: Water

Parameters	Results	Units	LOQ	LOD	DF	Prepared	Analyzed	CAS No.	Qual
6010 MET ICP, Dissolved		Analytical Method: EPA 6010							
Chromium, Dissolved	24700	ug/L	10.0	2.5	1		04/13/17 11:47	7440-47-3	
8260 MSV		Analytical Method: EPA 8260							
Benzene	<0.50	ug/L	1.0	0.50	1		04/07/17 11:50	71-43-2	
Bromobenzene	<0.23	ug/L	1.0	0.23	1		04/07/17 11:50	108-86-1	
Bromochloromethane	<0.34	ug/L	1.0	0.34	1		04/07/17 11:50	74-97-5	
Bromodichloromethane	<0.50	ug/L	1.0	0.50	1		04/07/17 11:50	75-27-4	
Bromoform	<0.50	ug/L	1.0	0.50	1		04/07/17 11:50	75-25-2	
Bromomethane	<2.4	ug/L	5.0	2.4	1		04/07/17 11:50	74-83-9	
n-Butylbenzene	<0.50	ug/L	1.0	0.50	1		04/07/17 11:50	104-51-8	
sec-Butylbenzene	<2.2	ug/L	5.0	2.2	1		04/07/17 11:50	135-98-8	
tert-Butylbenzene	<0.18	ug/L	1.0	0.18	1		04/07/17 11:50	98-06-6	
Carbon tetrachloride	<0.50	ug/L	1.0	0.50	1		04/07/17 11:50	56-23-5	
Chlorobenzene	<0.50	ug/L	1.0	0.50	1		04/07/17 11:50	108-90-7	
Chloroethane	<0.37	ug/L	1.0	0.37	1		04/07/17 11:50	75-00-3	
Chloroform	<2.5	ug/L	5.0	2.5	1		04/07/17 11:50	67-66-3	
Chloromethane	<0.50	ug/L	1.0	0.50	1		04/07/17 11:50	74-87-3	
2-Chlorotoluene	<0.50	ug/L	1.0	0.50	1		04/07/17 11:50	95-49-8	
4-Chlorotoluene	<0.21	ug/L	1.0	0.21	1		04/07/17 11:50	106-43-4	
1,2-Dibromo-3-chloropropane	<2.2	ug/L	5.0	2.2	1		04/07/17 11:50	96-12-8	
Dibromochloromethane	<0.50	ug/L	1.0	0.50	1		04/07/17 11:50	124-48-1	
1,2-Dibromoethane (EDB)	<0.18	ug/L	1.0	0.18	1		04/07/17 11:50	106-93-4	
Dibromomethane	<0.43	ug/L	1.0	0.43	1		04/07/17 11:50	74-95-3	
1,2-Dichlorobenzene	<0.50	ug/L	1.0	0.50	1		04/07/17 11:50	95-50-1	
1,3-Dichlorobenzene	<0.50	ug/L	1.0	0.50	1		04/07/17 11:50	541-73-1	
1,4-Dichlorobenzene	<0.50	ug/L	1.0	0.50	1		04/07/17 11:50	106-46-7	
Dichlorodifluoromethane	<0.22	ug/L	1.0	0.22	1		04/07/17 11:50	75-71-8	
1,1-Dichloroethane	0.26J	ug/L	1.0	0.24	1		04/07/17 11:50	75-34-3	
1,2-Dichloroethane	<0.17	ug/L	1.0	0.17	1		04/07/17 11:50	107-06-2	
1,1-Dichloroethene	<0.41	ug/L	1.0	0.41	1		04/07/17 11:50	75-35-4	
cis-1,2-Dichloroethene	3.1	ug/L	1.0	0.26	1		04/07/17 11:50	156-59-2	
trans-1,2-Dichloroethene	<0.26	ug/L	1.0	0.26	1		04/07/17 11:50	156-60-5	
1,2-Dichloropropane	<0.23	ug/L	1.0	0.23	1		04/07/17 11:50	78-87-5	
1,3-Dichloropropane	<0.50	ug/L	1.0	0.50	1		04/07/17 11:50	142-28-9	
2,2-Dichloropropane	<0.48	ug/L	1.0	0.48	1		04/07/17 11:50	594-20-7	
1,1-Dichloropropene	<0.44	ug/L	1.0	0.44	1		04/07/17 11:50	563-58-6	
cis-1,3-Dichloropropene	<0.50	ug/L	1.0	0.50	1		04/07/17 11:50	10061-01-5	
trans-1,3-Dichloropropene	<0.23	ug/L	1.0	0.23	1		04/07/17 11:50	10061-02-6	
Diisopropyl ether	<0.50	ug/L	1.0	0.50	1		04/07/17 11:50	108-20-3	
Ethylbenzene	<0.50	ug/L	1.0	0.50	1		04/07/17 11:50	100-41-4	
Hexachloro-1,3-butadiene	<2.1	ug/L	5.0	2.1	1		04/07/17 11:50	87-68-3	
Isopropylbenzene (Cumene)	<0.14	ug/L	1.0	0.14	1		04/07/17 11:50	98-82-8	
p-Isopropyltoluene	<0.50	ug/L	1.0	0.50	1		04/07/17 11:50	99-87-6	
Methylene Chloride	<0.23	ug/L	1.0	0.23	1		04/07/17 11:50	75-09-2	
Methyl-tert-butyl ether	<0.17	ug/L	1.0	0.17	1		04/07/17 11:50	1634-04-4	
Naphthalene	<2.5	ug/L	5.0	2.5	1		04/07/17 11:50	91-20-3	

REPORT OF LABORATORY ANALYSIS

This report shall not be reproduced, except in full,
without the written consent of Pace Analytical Services, LLC.

ANALYTICAL RESULTS

Project: 17-100 ALBANY FMR CHROME PLANT

Pace Project No.: 40147765

Sample: MW-19 **Lab ID: 40147765011** Collected: 04/05/17 11:00 Received: 04/05/17 13:15 Matrix: Water

Parameters	Results	Units	LOQ	LOD	DF	Prepared	Analyzed	CAS No.	Qual
8260 MSV		Analytical Method: EPA 8260							
n-Propylbenzene	<0.50	ug/L	1.0	0.50	1		04/07/17 11:50	103-65-1	
Styrene	<0.50	ug/L	1.0	0.50	1		04/07/17 11:50	100-42-5	
1,1,1,2-Tetrachloroethane	<0.18	ug/L	1.0	0.18	1		04/07/17 11:50	630-20-6	
1,1,2,2-Tetrachloroethane	<0.25	ug/L	1.0	0.25	1		04/07/17 11:50	79-34-5	
Tetrachloroethene	8.7	ug/L	1.0	0.50	1		04/07/17 11:50	127-18-4	
Toluene	<0.50	ug/L	1.0	0.50	1		04/07/17 11:50	108-88-3	
1,2,3-Trichlorobenzene	<2.1	ug/L	5.0	2.1	1		04/07/17 11:50	87-61-6	
1,2,4-Trichlorobenzene	<2.2	ug/L	5.0	2.2	1		04/07/17 11:50	120-82-1	
1,1,1-Trichloroethane	2.5	ug/L	1.0	0.50	1		04/07/17 11:50	71-55-6	
1,1,2-Trichloroethane	<0.20	ug/L	1.0	0.20	1		04/07/17 11:50	79-00-5	
Trichloroethene	3.3	ug/L	1.0	0.33	1		04/07/17 11:50	79-01-6	
Trichlorofluoromethane	<0.18	ug/L	1.0	0.18	1		04/07/17 11:50	75-69-4	
1,2,3-Trichloropropane	<0.50	ug/L	1.0	0.50	1		04/07/17 11:50	96-18-4	
1,2,4-Trimethylbenzene	<0.50	ug/L	1.0	0.50	1		04/07/17 11:50	95-63-6	
1,3,5-Trimethylbenzene	<0.50	ug/L	1.0	0.50	1		04/07/17 11:50	108-67-8	
Vinyl chloride	<0.18	ug/L	1.0	0.18	1		04/07/17 11:50	75-01-4	
m&p-Xylene	<1.0	ug/L	2.0	1.0	1		04/07/17 11:50	179601-23-1	
o-Xylene	<0.50	ug/L	1.0	0.50	1		04/07/17 11:50	95-47-6	
Surrogates									
4-Bromofluorobenzene (S)	87	%	70-130		1		04/07/17 11:50	460-00-4	
Dibromofluoromethane (S)	102	%	70-130		1		04/07/17 11:50	1868-53-7	
Toluene-d8 (S)	89	%	70-130		1		04/07/17 11:50	2037-26-5	
Chromium, Dissolved Hexavalent		Analytical Method: SM 3500-Cr B (Online)							
Chromium, Hexavalent, Dissolved	25.0	mg/L	5.0	0.97	250		04/05/17 16:00		

REPORT OF LABORATORY ANALYSIS

This report shall not be reproduced, except in full,
without the written consent of Pace Analytical Services, LLC.

ANALYTICAL RESULTS

Project: 17-100 ALBANY FMR CHROME PLANT

Pace Project No.: 40147765

Sample: MW-19A **Lab ID: 40147765012** Collected: 04/05/17 11:00 Received: 04/05/17 13:15 Matrix: Water

Parameters	Results	Units	LOQ	LOD	DF	Prepared	Analyzed	CAS No.	Qual
6010 MET ICP, Dissolved	Analytical Method: EPA 6010								
Chromium, Dissolved	4.2J	ug/L	10.0	2.5	1		04/13/17 11:49	7440-47-3	
Chromium, Dissolved Hexavalent	Analytical Method: SM 3500-Cr B (Online)								
Chromium, Hexavalent, Dissolved	<0.0039	mg/L	0.020	0.0039	1		04/05/17 16:00		1q

REPORT OF LABORATORY ANALYSIS

This report shall not be reproduced, except in full,
without the written consent of Pace Analytical Services, LLC.

ANALYTICAL RESULTS

Project: 17-100 ALBANY FMR CHROME PLANT

Pace Project No.: 40147765

Sample: **MW-20** Lab ID: **40147765013** Collected: 04/05/17 11:00 Received: 04/05/17 13:15 Matrix: Water

Parameters	Results	Units	LOQ	LOD	DF	Prepared	Analyzed	CAS No.	Qual
6010 MET ICP, Dissolved		Analytical Method: EPA 6010							
Chromium, Dissolved	262000	ug/L	100	25.3	10		04/13/17 13:42	7440-47-3	
8260 MSV		Analytical Method: EPA 8260							
Benzene	<0.50	ug/L	1.0	0.50	1		04/07/17 12:13	71-43-2	
Bromobenzene	<0.23	ug/L	1.0	0.23	1		04/07/17 12:13	108-86-1	
Bromochloromethane	<0.34	ug/L	1.0	0.34	1		04/07/17 12:13	74-97-5	
Bromodichloromethane	<0.50	ug/L	1.0	0.50	1		04/07/17 12:13	75-27-4	
Bromoform	<0.50	ug/L	1.0	0.50	1		04/07/17 12:13	75-25-2	
Bromomethane	<2.4	ug/L	5.0	2.4	1		04/07/17 12:13	74-83-9	
n-Butylbenzene	<0.50	ug/L	1.0	0.50	1		04/07/17 12:13	104-51-8	
sec-Butylbenzene	<2.2	ug/L	5.0	2.2	1		04/07/17 12:13	135-98-8	
tert-Butylbenzene	<0.18	ug/L	1.0	0.18	1		04/07/17 12:13	98-06-6	
Carbon tetrachloride	<0.50	ug/L	1.0	0.50	1		04/07/17 12:13	56-23-5	
Chlorobenzene	<0.50	ug/L	1.0	0.50	1		04/07/17 12:13	108-90-7	
Chloroethane	<0.37	ug/L	1.0	0.37	1		04/07/17 12:13	75-00-3	
Chloroform	<2.5	ug/L	5.0	2.5	1		04/07/17 12:13	67-66-3	
Chloromethane	<0.50	ug/L	1.0	0.50	1		04/07/17 12:13	74-87-3	
2-Chlorotoluene	<0.50	ug/L	1.0	0.50	1		04/07/17 12:13	95-49-8	
4-Chlorotoluene	<0.21	ug/L	1.0	0.21	1		04/07/17 12:13	106-43-4	
1,2-Dibromo-3-chloropropane	<2.2	ug/L	5.0	2.2	1		04/07/17 12:13	96-12-8	
Dibromochloromethane	<0.50	ug/L	1.0	0.50	1		04/07/17 12:13	124-48-1	
1,2-Dibromoethane (EDB)	<0.18	ug/L	1.0	0.18	1		04/07/17 12:13	106-93-4	
Dibromomethane	<0.43	ug/L	1.0	0.43	1		04/07/17 12:13	74-95-3	
1,2-Dichlorobenzene	<0.50	ug/L	1.0	0.50	1		04/07/17 12:13	95-50-1	
1,3-Dichlorobenzene	<0.50	ug/L	1.0	0.50	1		04/07/17 12:13	541-73-1	
1,4-Dichlorobenzene	<0.50	ug/L	1.0	0.50	1		04/07/17 12:13	106-46-7	
Dichlorodifluoromethane	<0.22	ug/L	1.0	0.22	1		04/07/17 12:13	75-71-8	
1,1-Dichloroethane	<0.24	ug/L	1.0	0.24	1		04/07/17 12:13	75-34-3	
1,2-Dichloroethane	<0.17	ug/L	1.0	0.17	1		04/07/17 12:13	107-06-2	
1,1-Dichloroethene	<0.41	ug/L	1.0	0.41	1		04/07/17 12:13	75-35-4	
cis-1,2-Dichloroethene	0.31J	ug/L	1.0	0.26	1		04/07/17 12:13	156-59-2	
trans-1,2-Dichloroethene	<0.26	ug/L	1.0	0.26	1		04/07/17 12:13	156-60-5	
1,2-Dichloropropane	<0.23	ug/L	1.0	0.23	1		04/07/17 12:13	78-87-5	
1,3-Dichloropropane	<0.50	ug/L	1.0	0.50	1		04/07/17 12:13	142-28-9	
2,2-Dichloropropane	<0.48	ug/L	1.0	0.48	1		04/07/17 12:13	594-20-7	
1,1-Dichloropropene	<0.44	ug/L	1.0	0.44	1		04/07/17 12:13	563-58-6	
cis-1,3-Dichloropropene	<0.50	ug/L	1.0	0.50	1		04/07/17 12:13	10061-01-5	
trans-1,3-Dichloropropene	<0.23	ug/L	1.0	0.23	1		04/07/17 12:13	10061-02-6	
Diisopropyl ether	<0.50	ug/L	1.0	0.50	1		04/07/17 12:13	108-20-3	
Ethylbenzene	<0.50	ug/L	1.0	0.50	1		04/07/17 12:13	100-41-4	
Hexachloro-1,3-butadiene	<2.1	ug/L	5.0	2.1	1		04/07/17 12:13	87-68-3	
Isopropylbenzene (Cumene)	<0.14	ug/L	1.0	0.14	1		04/07/17 12:13	98-82-8	
p-Isopropyltoluene	<0.50	ug/L	1.0	0.50	1		04/07/17 12:13	99-87-6	
Methylene Chloride	<0.23	ug/L	1.0	0.23	1		04/07/17 12:13	75-09-2	
Methyl-tert-butyl ether	<0.17	ug/L	1.0	0.17	1		04/07/17 12:13	1634-04-4	
Naphthalene	<2.5	ug/L	5.0	2.5	1		04/07/17 12:13	91-20-3	

REPORT OF LABORATORY ANALYSIS

This report shall not be reproduced, except in full,
without the written consent of Pace Analytical Services, LLC.

ANALYTICAL RESULTS

Project: 17-100 ALBANY FMR CHROME PLANT

Pace Project No.: 40147765

Sample: MW-20 **Lab ID: 40147765013** Collected: 04/05/17 11:00 Received: 04/05/17 13:15 Matrix: Water

Parameters	Results	Units	LOQ	LOD	DF	Prepared	Analyzed	CAS No.	Qual
8260 MSV		Analytical Method: EPA 8260							
n-Propylbenzene	<0.50	ug/L	1.0	0.50	1		04/07/17 12:13	103-65-1	
Styrene	<0.50	ug/L	1.0	0.50	1		04/07/17 12:13	100-42-5	
1,1,1,2-Tetrachloroethane	<0.18	ug/L	1.0	0.18	1		04/07/17 12:13	630-20-6	
1,1,2,2-Tetrachloroethane	<0.25	ug/L	1.0	0.25	1		04/07/17 12:13	79-34-5	
Tetrachloroethene	<0.50	ug/L	1.0	0.50	1		04/07/17 12:13	127-18-4	
Toluene	<0.50	ug/L	1.0	0.50	1		04/07/17 12:13	108-88-3	
1,2,3-Trichlorobenzene	<2.1	ug/L	5.0	2.1	1		04/07/17 12:13	87-61-6	
1,2,4-Trichlorobenzene	<2.2	ug/L	5.0	2.2	1		04/07/17 12:13	120-82-1	
1,1,1-Trichloroethane	<0.50	ug/L	1.0	0.50	1		04/07/17 12:13	71-55-6	
1,1,2-Trichloroethane	<0.20	ug/L	1.0	0.20	1		04/07/17 12:13	79-00-5	
Trichloroethene	<0.33	ug/L	1.0	0.33	1		04/07/17 12:13	79-01-6	
Trichlorofluoromethane	<0.18	ug/L	1.0	0.18	1		04/07/17 12:13	75-69-4	
1,2,3-Trichloropropane	<0.50	ug/L	1.0	0.50	1		04/07/17 12:13	96-18-4	
1,2,4-Trimethylbenzene	<0.50	ug/L	1.0	0.50	1		04/07/17 12:13	95-63-6	
1,3,5-Trimethylbenzene	<0.50	ug/L	1.0	0.50	1		04/07/17 12:13	108-67-8	
Vinyl chloride	<0.18	ug/L	1.0	0.18	1		04/07/17 12:13	75-01-4	
m&p-Xylene	<1.0	ug/L	2.0	1.0	1		04/07/17 12:13	179601-23-1	
o-Xylene	<0.50	ug/L	1.0	0.50	1		04/07/17 12:13	95-47-6	
Surrogates									
4-Bromofluorobenzene (S)	85	%	70-130		1		04/07/17 12:13	460-00-4	
Dibromofluoromethane (S)	102	%	70-130		1		04/07/17 12:13	1868-53-7	
Toluene-d8 (S)	89	%	70-130		1		04/07/17 12:13	2037-26-5	
Chromium, Dissolved Hexavalent		Analytical Method: SM 3500-Cr B (Online)							
Chromium, Hexavalent, Dissolved	242	mg/L	10.0	1.9	500		04/05/17 16:00		

REPORT OF LABORATORY ANALYSIS

This report shall not be reproduced, except in full,
without the written consent of Pace Analytical Services, LLC.

ANALYTICAL RESULTS

Project: 17-100 ALBANY FMR CHROME PLANT

Pace Project No.: 40147765

Sample: MW-20A **Lab ID: 40147765014** Collected: 04/05/17 11:00 Received: 04/05/17 13:15 Matrix: Water

Parameters	Results	Units	LOQ	LOD	DF	Prepared	Analyzed	CAS No.	Qual
6010 MET ICP, Dissolved	Analytical Method: EPA 6010								
Chromium, Dissolved	23.1	ug/L	10.0	2.5	1		04/13/17 11:55	7440-47-3	
Chromium, Dissolved Hexavalent	Analytical Method: SM 3500-Cr B (Online)								
Chromium, Hexavalent, Dissolved	<0.0039	mg/L	0.020	0.0039	1		04/05/17 16:00		1q

REPORT OF LABORATORY ANALYSIS

This report shall not be reproduced, except in full,
without the written consent of Pace Analytical Services, LLC.

ANALYTICAL RESULTS

Project: 17-100 ALBANY FMR CHROME PLANT

Pace Project No.: 40147765

Sample: MW-21 **Lab ID: 40147765015** Collected: 04/05/17 11:00 Received: 04/05/17 13:15 Matrix: Water

Parameters	Results	Units	LOQ	LOD	DF	Prepared	Analyzed	CAS No.	Qual
6010 MET ICP, Dissolved	Analytical Method: EPA 6010								
Chromium, Dissolved	<2.5	ug/L	10.0	2.5	1		04/13/17 11:57	7440-47-3	
Chromium, Dissolved Hexavalent	Analytical Method: SM 3500-Cr B (Online)								
Chromium, Hexavalent, Dissolved	<0.0039	mg/L	0.020	0.0039	1		04/05/17 16:00		1q

REPORT OF LABORATORY ANALYSIS

This report shall not be reproduced, except in full,
without the written consent of Pace Analytical Services, LLC.

ANALYTICAL RESULTS

Project: 17-100 ALBANY FMR CHROME PLANT

Pace Project No.: 40147765

Sample: MW-21A **Lab ID: 40147765016** Collected: 04/05/17 11:00 Received: 04/05/17 13:15 Matrix: Water

Parameters	Results	Units	LOQ	LOD	DF	Prepared	Analyzed	CAS No.	Qual
6010 MET ICP, Dissolved	Analytical Method: EPA 6010								
Chromium, Dissolved	<2.5	ug/L	10.0	2.5	1		04/13/17 12:05	7440-47-3	
Chromium, Dissolved Hexavalent	Analytical Method: SM 3500-Cr B (Online)								
Chromium, Hexavalent, Dissolved	<0.0039	mg/L	0.020	0.0039	1		04/05/17 16:00		1q

REPORT OF LABORATORY ANALYSIS

This report shall not be reproduced, except in full,
without the written consent of Pace Analytical Services, LLC.

ANALYTICAL RESULTS

Project: 17-100 ALBANY FMR CHROME PLANT

Pace Project No.: 40147765

Sample: BLIND DUPLICATE **Lab ID: 40147765017** Collected: 04/05/17 11:00 Received: 04/05/17 13:15 Matrix: Water

Parameters	Results	Units	LOQ	LOD	DF	Prepared	Analyzed	CAS No.	Qual
6010 MET ICP, Dissolved	Analytical Method: EPA 6010								
Chromium, Dissolved	254000	ug/L	100	25.3	10		04/13/17 13:44	7440-47-3	
Chromium, Dissolved Hexavalent	Analytical Method: SM 3500-Cr B (Online)								
Chromium, Hexavalent, Dissolved	248	mg/L	10.0	1.9	500		04/05/17 16:00		

REPORT OF LABORATORY ANALYSIS

This report shall not be reproduced, except in full,
without the written consent of Pace Analytical Services, LLC.

ANALYTICAL RESULTS

Project: 17-100 ALBANY FMR CHROME PLANT

Pace Project No.: 40147765

Sample: TRIP BLANK **Lab ID: 40147765018** Collected: 04/05/17 11:00 Received: 04/05/17 13:15 Matrix: Water

Parameters	Results	Units	LOQ	LOD	DF	Prepared	Analyzed	CAS No.	Qual
8260 MSV Analytical Method: EPA 8260									
Benzene	<0.50	ug/L	1.0	0.50	1		04/07/17 15:39	71-43-2	
Bromobenzene	<0.23	ug/L	1.0	0.23	1		04/07/17 15:39	108-86-1	
Bromochloromethane	<0.34	ug/L	1.0	0.34	1		04/07/17 15:39	74-97-5	
Bromodichloromethane	<0.50	ug/L	1.0	0.50	1		04/07/17 15:39	75-27-4	
Bromoform	<0.50	ug/L	1.0	0.50	1		04/07/17 15:39	75-25-2	
Bromomethane	<2.4	ug/L	5.0	2.4	1		04/07/17 15:39	74-83-9	
n-Butylbenzene	<0.50	ug/L	1.0	0.50	1		04/07/17 15:39	104-51-8	
sec-Butylbenzene	<2.2	ug/L	5.0	2.2	1		04/07/17 15:39	135-98-8	
tert-Butylbenzene	<0.18	ug/L	1.0	0.18	1		04/07/17 15:39	98-06-6	
Carbon tetrachloride	<0.50	ug/L	1.0	0.50	1		04/07/17 15:39	56-23-5	
Chlorobenzene	<0.50	ug/L	1.0	0.50	1		04/07/17 15:39	108-90-7	
Chloroethane	<0.37	ug/L	1.0	0.37	1		04/07/17 15:39	75-00-3	
Chloroform	<2.5	ug/L	5.0	2.5	1		04/07/17 15:39	67-66-3	
Chloromethane	<0.50	ug/L	1.0	0.50	1		04/07/17 15:39	74-87-3	
2-Chlorotoluene	<0.50	ug/L	1.0	0.50	1		04/07/17 15:39	95-49-8	
4-Chlorotoluene	<0.21	ug/L	1.0	0.21	1		04/07/17 15:39	106-43-4	
1,2-Dibromo-3-chloropropane	<2.2	ug/L	5.0	2.2	1		04/07/17 15:39	96-12-8	
Dibromochloromethane	<0.50	ug/L	1.0	0.50	1		04/07/17 15:39	124-48-1	
1,2-Dibromoethane (EDB)	<0.18	ug/L	1.0	0.18	1		04/07/17 15:39	106-93-4	
Dibromomethane	<0.43	ug/L	1.0	0.43	1		04/07/17 15:39	74-95-3	
1,2-Dichlorobenzene	<0.50	ug/L	1.0	0.50	1		04/07/17 15:39	95-50-1	
1,3-Dichlorobenzene	<0.50	ug/L	1.0	0.50	1		04/07/17 15:39	541-73-1	
1,4-Dichlorobenzene	<0.50	ug/L	1.0	0.50	1		04/07/17 15:39	106-46-7	
Dichlorodifluoromethane	<0.22	ug/L	1.0	0.22	1		04/07/17 15:39	75-71-8	
1,1-Dichloroethane	<0.24	ug/L	1.0	0.24	1		04/07/17 15:39	75-34-3	
1,2-Dichloroethane	<0.17	ug/L	1.0	0.17	1		04/07/17 15:39	107-06-2	
1,1-Dichloroethene	<0.41	ug/L	1.0	0.41	1		04/07/17 15:39	75-35-4	
cis-1,2-Dichloroethene	<0.26	ug/L	1.0	0.26	1		04/07/17 15:39	156-59-2	
trans-1,2-Dichloroethene	<0.26	ug/L	1.0	0.26	1		04/07/17 15:39	156-60-5	
1,2-Dichloropropane	<0.23	ug/L	1.0	0.23	1		04/07/17 15:39	78-87-5	
1,3-Dichloropropane	<0.50	ug/L	1.0	0.50	1		04/07/17 15:39	142-28-9	
2,2-Dichloropropane	<0.48	ug/L	1.0	0.48	1		04/07/17 15:39	594-20-7	
1,1-Dichloropropene	<0.44	ug/L	1.0	0.44	1		04/07/17 15:39	563-58-6	
cis-1,3-Dichloropropene	<0.50	ug/L	1.0	0.50	1		04/07/17 15:39	10061-01-5	
trans-1,3-Dichloropropene	<0.23	ug/L	1.0	0.23	1		04/07/17 15:39	10061-02-6	
Diisopropyl ether	<0.50	ug/L	1.0	0.50	1		04/07/17 15:39	108-20-3	
Ethylbenzene	<0.50	ug/L	1.0	0.50	1		04/07/17 15:39	100-41-4	
Hexachloro-1,3-butadiene	<2.1	ug/L	5.0	2.1	1		04/07/17 15:39	87-68-3	
Isopropylbenzene (Cumene)	<0.14	ug/L	1.0	0.14	1		04/07/17 15:39	98-82-8	
p-Isopropyltoluene	<0.50	ug/L	1.0	0.50	1		04/07/17 15:39	99-87-6	
Methylene Chloride	<0.23	ug/L	1.0	0.23	1		04/07/17 15:39	75-09-2	
Methyl-tert-butyl ether	<0.17	ug/L	1.0	0.17	1		04/07/17 15:39	1634-04-4	
Naphthalene	<2.5	ug/L	5.0	2.5	1		04/07/17 15:39	91-20-3	
n-Propylbenzene	<0.50	ug/L	1.0	0.50	1		04/07/17 15:39	103-65-1	
Styrene	<0.50	ug/L	1.0	0.50	1		04/07/17 15:39	100-42-5	
1,1,1,2-Tetrachloroethane	<0.18	ug/L	1.0	0.18	1		04/07/17 15:39	630-20-6	

REPORT OF LABORATORY ANALYSIS

This report shall not be reproduced, except in full,
without the written consent of Pace Analytical Services, LLC.

ANALYTICAL RESULTS

Project: 17-100 ALBANY FMR CHROME PLANT

Pace Project No.: 40147765

Sample: TRIP BLANK **Lab ID: 40147765018** Collected: 04/05/17 11:00 Received: 04/05/17 13:15 Matrix: Water

Parameters	Results	Units	LOQ	LOD	DF	Prepared	Analyzed	CAS No.	Qual
8260 MSV									
Analytical Method: EPA 8260									
1,1,2,2-Tetrachloroethane	<0.25	ug/L	1.0	0.25	1		04/07/17 15:39	79-34-5	
Tetrachloroethene	<0.50	ug/L	1.0	0.50	1		04/07/17 15:39	127-18-4	
Toluene	<0.50	ug/L	1.0	0.50	1		04/07/17 15:39	108-88-3	
1,2,3-Trichlorobenzene	<2.1	ug/L	5.0	2.1	1		04/07/17 15:39	87-61-6	
1,2,4-Trichlorobenzene	<2.2	ug/L	5.0	2.2	1		04/07/17 15:39	120-82-1	
1,1,1-Trichloroethane	<0.50	ug/L	1.0	0.50	1		04/07/17 15:39	71-55-6	
1,1,2-Trichloroethane	<0.20	ug/L	1.0	0.20	1		04/07/17 15:39	79-00-5	
Trichloroethene	<0.33	ug/L	1.0	0.33	1		04/07/17 15:39	79-01-6	
Trichlorofluoromethane	<0.18	ug/L	1.0	0.18	1		04/07/17 15:39	75-69-4	
1,2,3-Trichloropropane	<0.50	ug/L	1.0	0.50	1		04/07/17 15:39	96-18-4	
1,2,4-Trimethylbenzene	<0.50	ug/L	1.0	0.50	1		04/07/17 15:39	95-63-6	
1,3,5-Trimethylbenzene	<0.50	ug/L	1.0	0.50	1		04/07/17 15:39	108-67-8	
Vinyl chloride	<0.18	ug/L	1.0	0.18	1		04/07/17 15:39	75-01-4	
m&p-Xylene	<1.0	ug/L	2.0	1.0	1		04/07/17 15:39	179601-23-1	
o-Xylene	<0.50	ug/L	1.0	0.50	1		04/07/17 15:39	95-47-6	
Surrogates									
4-Bromofluorobenzene (S)	89	%	70-130		1		04/07/17 15:39	460-00-4	
Dibromofluoromethane (S)	108	%	70-130		1		04/07/17 15:39	1868-53-7	
Toluene-d8 (S)	88	%	70-130		1		04/07/17 15:39	2037-26-5	

REPORT OF LABORATORY ANALYSIS

This report shall not be reproduced, except in full,
without the written consent of Pace Analytical Services, LLC.

ANALYTICAL RESULTS

Project: 17-100 ALBANY FMR CHROME PLANT

Pace Project No.: 40147765

Sample: MANHOLE **Lab ID: 40147765019** Collected: 04/05/17 11:00 Received: 04/05/17 13:15 Matrix: Water

Parameters	Results	Units	LOQ	LOD	DF	Prepared	Analyzed	CAS No.	Qual
6010 MET ICP		Analytical Method: EPA 6010 Preparation Method: EPA 3010							
Chromium	1720	ug/L	10.0	2.5	1	04/07/17 08:50	04/07/17 16:05	7440-47-3	
8260 MSV		Analytical Method: EPA 8260							
Benzene	<0.50	ug/L	1.0	0.50	1		04/07/17 14:30	71-43-2	
Bromobenzene	<0.23	ug/L	1.0	0.23	1		04/07/17 14:30	108-86-1	
Bromochloromethane	<0.34	ug/L	1.0	0.34	1		04/07/17 14:30	74-97-5	
Bromodichloromethane	<0.50	ug/L	1.0	0.50	1		04/07/17 14:30	75-27-4	
Bromoform	<0.50	ug/L	1.0	0.50	1		04/07/17 14:30	75-25-2	
Bromomethane	<2.4	ug/L	5.0	2.4	1		04/07/17 14:30	74-83-9	
n-Butylbenzene	<0.50	ug/L	1.0	0.50	1		04/07/17 14:30	104-51-8	
sec-Butylbenzene	<2.2	ug/L	5.0	2.2	1		04/07/17 14:30	135-98-8	
tert-Butylbenzene	<0.18	ug/L	1.0	0.18	1		04/07/17 14:30	98-06-6	
Carbon tetrachloride	<0.50	ug/L	1.0	0.50	1		04/07/17 14:30	56-23-5	
Chlorobenzene	<0.50	ug/L	1.0	0.50	1		04/07/17 14:30	108-90-7	
Chloroethane	<0.37	ug/L	1.0	0.37	1		04/07/17 14:30	75-00-3	
Chloroform	<2.5	ug/L	5.0	2.5	1		04/07/17 14:30	67-66-3	
Chloromethane	<0.50	ug/L	1.0	0.50	1		04/07/17 14:30	74-87-3	
2-Chlorotoluene	<0.50	ug/L	1.0	0.50	1		04/07/17 14:30	95-49-8	
4-Chlorotoluene	<0.21	ug/L	1.0	0.21	1		04/07/17 14:30	106-43-4	
1,2-Dibromo-3-chloropropane	<2.2	ug/L	5.0	2.2	1		04/07/17 14:30	96-12-8	
Dibromochloromethane	<0.50	ug/L	1.0	0.50	1		04/07/17 14:30	124-48-1	
1,2-Dibromoethane (EDB)	<0.18	ug/L	1.0	0.18	1		04/07/17 14:30	106-93-4	
Dibromomethane	<0.43	ug/L	1.0	0.43	1		04/07/17 14:30	74-95-3	
1,2-Dichlorobenzene	<0.50	ug/L	1.0	0.50	1		04/07/17 14:30	95-50-1	
1,3-Dichlorobenzene	<0.50	ug/L	1.0	0.50	1		04/07/17 14:30	541-73-1	
1,4-Dichlorobenzene	<0.50	ug/L	1.0	0.50	1		04/07/17 14:30	106-46-7	
Dichlorodifluoromethane	<0.22	ug/L	1.0	0.22	1		04/07/17 14:30	75-71-8	
1,1-Dichloroethane	<0.24	ug/L	1.0	0.24	1		04/07/17 14:30	75-34-3	
1,2-Dichloroethane	<0.17	ug/L	1.0	0.17	1		04/07/17 14:30	107-06-2	
1,1-Dichloroethene	<0.41	ug/L	1.0	0.41	1		04/07/17 14:30	75-35-4	
cis-1,2-Dichloroethene	21.4	ug/L	1.0	0.26	1		04/07/17 14:30	156-59-2	
trans-1,2-Dichloroethene	0.58J	ug/L	1.0	0.26	1		04/07/17 14:30	156-60-5	
1,2-Dichloropropane	<0.23	ug/L	1.0	0.23	1		04/07/17 14:30	78-87-5	
1,3-Dichloropropane	<0.50	ug/L	1.0	0.50	1		04/07/17 14:30	142-28-9	
2,2-Dichloropropane	<0.48	ug/L	1.0	0.48	1		04/07/17 14:30	594-20-7	
1,1-Dichloropropene	<0.44	ug/L	1.0	0.44	1		04/07/17 14:30	563-58-6	
cis-1,3-Dichloropropene	<0.50	ug/L	1.0	0.50	1		04/07/17 14:30	10061-01-5	
trans-1,3-Dichloropropene	<0.23	ug/L	1.0	0.23	1		04/07/17 14:30	10061-02-6	
Diisopropyl ether	<0.50	ug/L	1.0	0.50	1		04/07/17 14:30	108-20-3	
Ethylbenzene	<0.50	ug/L	1.0	0.50	1		04/07/17 14:30	100-41-4	
Hexachloro-1,3-butadiene	<2.1	ug/L	5.0	2.1	1		04/07/17 14:30	87-68-3	
Isopropylbenzene (Cumene)	<0.14	ug/L	1.0	0.14	1		04/07/17 14:30	98-82-8	
p-Isopropyltoluene	<0.50	ug/L	1.0	0.50	1		04/07/17 14:30	99-87-6	
Methylene Chloride	<0.23	ug/L	1.0	0.23	1		04/07/17 14:30	75-09-2	
Methyl-tert-butyl ether	<0.17	ug/L	1.0	0.17	1		04/07/17 14:30	1634-04-4	
Naphthalene	<2.5	ug/L	5.0	2.5	1		04/07/17 14:30	91-20-3	

REPORT OF LABORATORY ANALYSIS

This report shall not be reproduced, except in full,
without the written consent of Pace Analytical Services, LLC.

ANALYTICAL RESULTS

Project: 17-100 ALBANY FMR CHROME PLANT

Pace Project No.: 40147765

Sample: MANHOLE **Lab ID: 40147765019** Collected: 04/05/17 11:00 Received: 04/05/17 13:15 Matrix: Water

Parameters	Results	Units	LOQ	LOD	DF	Prepared	Analyzed	CAS No.	Qual
8260 MSV		Analytical Method: EPA 8260							
n-Propylbenzene	<0.50	ug/L	1.0	0.50	1		04/07/17 14:30	103-65-1	
Styrene	<0.50	ug/L	1.0	0.50	1		04/07/17 14:30	100-42-5	
1,1,1,2-Tetrachloroethane	<0.18	ug/L	1.0	0.18	1		04/07/17 14:30	630-20-6	
1,1,2,2-Tetrachloroethane	<0.25	ug/L	1.0	0.25	1		04/07/17 14:30	79-34-5	
Tetrachloroethene	0.79J	ug/L	1.0	0.50	1		04/07/17 14:30	127-18-4	
Toluene	<0.50	ug/L	1.0	0.50	1		04/07/17 14:30	108-88-3	
1,2,3-Trichlorobenzene	<2.1	ug/L	5.0	2.1	1		04/07/17 14:30	87-61-6	
1,2,4-Trichlorobenzene	<2.2	ug/L	5.0	2.2	1		04/07/17 14:30	120-82-1	
1,1,1-Trichloroethane	<0.50	ug/L	1.0	0.50	1		04/07/17 14:30	71-55-6	
1,1,2-Trichloroethane	<0.20	ug/L	1.0	0.20	1		04/07/17 14:30	79-00-5	
Trichloroethene	3.3	ug/L	1.0	0.33	1		04/07/17 14:30	79-01-6	
Trichlorofluoromethane	<0.18	ug/L	1.0	0.18	1		04/07/17 14:30	75-69-4	
1,2,3-Trichloropropane	<0.50	ug/L	1.0	0.50	1		04/07/17 14:30	96-18-4	
1,2,4-Trimethylbenzene	<0.50	ug/L	1.0	0.50	1		04/07/17 14:30	95-63-6	
1,3,5-Trimethylbenzene	<0.50	ug/L	1.0	0.50	1		04/07/17 14:30	108-67-8	
Vinyl chloride	<0.18	ug/L	1.0	0.18	1		04/07/17 14:30	75-01-4	
m&p-Xylene	<1.0	ug/L	2.0	1.0	1		04/07/17 14:30	179601-23-1	
o-Xylene	<0.50	ug/L	1.0	0.50	1		04/07/17 14:30	95-47-6	
Surrogates									
4-Bromofluorobenzene (S)	88	%	70-130		1		04/07/17 14:30	460-00-4	
Dibromofluoromethane (S)	107	%	70-130		1		04/07/17 14:30	1868-53-7	
Toluene-d8 (S)	88	%	70-130		1		04/07/17 14:30	2037-26-5	
Chromium, Hexavalent		Analytical Method: SM 3500-Cr B (Online)							
Chromium, Hexavalent	1.9	mg/L	0.17	0.051	10		04/05/17 16:00		

REPORT OF LABORATORY ANALYSIS

This report shall not be reproduced, except in full,
without the written consent of Pace Analytical Services, LLC.

ANALYTICAL RESULTS

Project: 17-100 ALBANY FMR CHROME PLANT

Pace Project No.: 40147765

Sample: SUMP **Lab ID: 40147765020** Collected: 04/05/17 11:00 Received: 04/05/17 13:15 Matrix: Water

Parameters	Results	Units	LOQ	LOD	DF	Prepared	Analyzed	CAS No.	Qual
6010 MET ICP		Analytical Method: EPA 6010 Preparation Method: EPA 3010							
Chromium	11400	ug/L	10.0	2.5	1	04/07/17 08:50	04/07/17 16:08	7440-47-3	
8260 MSV		Analytical Method: EPA 8260							
Benzene	<0.50	ug/L	1.0	0.50	1		04/07/17 17:33	71-43-2	
Bromobenzene	<0.23	ug/L	1.0	0.23	1		04/07/17 17:33	108-86-1	
Bromochloromethane	<0.34	ug/L	1.0	0.34	1		04/07/17 17:33	74-97-5	
Bromodichloromethane	<0.50	ug/L	1.0	0.50	1		04/07/17 17:33	75-27-4	
Bromoform	<0.50	ug/L	1.0	0.50	1		04/07/17 17:33	75-25-2	
Bromomethane	<2.4	ug/L	5.0	2.4	1		04/07/17 17:33	74-83-9	
n-Butylbenzene	<0.50	ug/L	1.0	0.50	1		04/07/17 17:33	104-51-8	
sec-Butylbenzene	<2.2	ug/L	5.0	2.2	1		04/07/17 17:33	135-98-8	
tert-Butylbenzene	<0.18	ug/L	1.0	0.18	1		04/07/17 17:33	98-06-6	
Carbon tetrachloride	<0.50	ug/L	1.0	0.50	1		04/07/17 17:33	56-23-5	
Chlorobenzene	<0.50	ug/L	1.0	0.50	1		04/07/17 17:33	108-90-7	
Chloroethane	<0.37	ug/L	1.0	0.37	1		04/07/17 17:33	75-00-3	
Chloroform	<2.5	ug/L	5.0	2.5	1		04/07/17 17:33	67-66-3	
Chloromethane	<0.50	ug/L	1.0	0.50	1		04/07/17 17:33	74-87-3	
2-Chlorotoluene	<0.50	ug/L	1.0	0.50	1		04/07/17 17:33	95-49-8	
4-Chlorotoluene	<0.21	ug/L	1.0	0.21	1		04/07/17 17:33	106-43-4	
1,2-Dibromo-3-chloropropane	<2.2	ug/L	5.0	2.2	1		04/07/17 17:33	96-12-8	
Dibromochloromethane	<0.50	ug/L	1.0	0.50	1		04/07/17 17:33	124-48-1	
1,2-Dibromoethane (EDB)	<0.18	ug/L	1.0	0.18	1		04/07/17 17:33	106-93-4	
Dibromomethane	<0.43	ug/L	1.0	0.43	1		04/07/17 17:33	74-95-3	
1,2-Dichlorobenzene	<0.50	ug/L	1.0	0.50	1		04/07/17 17:33	95-50-1	
1,3-Dichlorobenzene	<0.50	ug/L	1.0	0.50	1		04/07/17 17:33	541-73-1	
1,4-Dichlorobenzene	<0.50	ug/L	1.0	0.50	1		04/07/17 17:33	106-46-7	
Dichlorodifluoromethane	<0.22	ug/L	1.0	0.22	1		04/07/17 17:33	75-71-8	
1,1-Dichloroethane	<0.24	ug/L	1.0	0.24	1		04/07/17 17:33	75-34-3	
1,2-Dichloroethane	<0.17	ug/L	1.0	0.17	1		04/07/17 17:33	107-06-2	
1,1-Dichloroethene	<0.41	ug/L	1.0	0.41	1		04/07/17 17:33	75-35-4	
cis-1,2-Dichloroethene	1.0	ug/L	1.0	0.26	1		04/07/17 17:33	156-59-2	
trans-1,2-Dichloroethene	<0.26	ug/L	1.0	0.26	1		04/07/17 17:33	156-60-5	
1,2-Dichloropropane	<0.23	ug/L	1.0	0.23	1		04/07/17 17:33	78-87-5	
1,3-Dichloropropane	<0.50	ug/L	1.0	0.50	1		04/07/17 17:33	142-28-9	
2,2-Dichloropropane	<0.48	ug/L	1.0	0.48	1		04/07/17 17:33	594-20-7	
1,1-Dichloropropene	<0.44	ug/L	1.0	0.44	1		04/07/17 17:33	563-58-6	
cis-1,3-Dichloropropene	<0.50	ug/L	1.0	0.50	1		04/07/17 17:33	10061-01-5	
trans-1,3-Dichloropropene	<0.23	ug/L	1.0	0.23	1		04/07/17 17:33	10061-02-6	
Diisopropyl ether	<0.50	ug/L	1.0	0.50	1		04/07/17 17:33	108-20-3	
Ethylbenzene	<0.50	ug/L	1.0	0.50	1		04/07/17 17:33	100-41-4	
Hexachloro-1,3-butadiene	<2.1	ug/L	5.0	2.1	1		04/07/17 17:33	87-68-3	
Isopropylbenzene (Cumene)	<0.14	ug/L	1.0	0.14	1		04/07/17 17:33	98-82-8	
p-Isopropyltoluene	<0.50	ug/L	1.0	0.50	1		04/07/17 17:33	99-87-6	
Methylene Chloride	<0.23	ug/L	1.0	0.23	1		04/07/17 17:33	75-09-2	
Methyl-tert-butyl ether	<0.17	ug/L	1.0	0.17	1		04/07/17 17:33	1634-04-4	
Naphthalene	<2.5	ug/L	5.0	2.5	1		04/07/17 17:33	91-20-3	

REPORT OF LABORATORY ANALYSIS

This report shall not be reproduced, except in full,
without the written consent of Pace Analytical Services, LLC.

ANALYTICAL RESULTS

Project: 17-100 ALBANY FMR CHROME PLANT

Pace Project No.: 40147765

Sample: SUMP **Lab ID: 40147765020** Collected: 04/05/17 11:00 Received: 04/05/17 13:15 Matrix: Water

Parameters	Results	Units	LOQ	LOD	DF	Prepared	Analyzed	CAS No.	Qual
8260 MSV Analytical Method: EPA 8260									
n-Propylbenzene	<0.50	ug/L	1.0	0.50	1		04/07/17 17:33	103-65-1	
Styrene	<0.50	ug/L	1.0	0.50	1		04/07/17 17:33	100-42-5	
1,1,1,2-Tetrachloroethane	<0.18	ug/L	1.0	0.18	1		04/07/17 17:33	630-20-6	
1,1,2,2-Tetrachloroethane	<0.25	ug/L	1.0	0.25	1		04/07/17 17:33	79-34-5	
Tetrachloroethene	<0.50	ug/L	1.0	0.50	1		04/07/17 17:33	127-18-4	
Toluene	<0.50	ug/L	1.0	0.50	1		04/07/17 17:33	108-88-3	
1,2,3-Trichlorobenzene	<2.1	ug/L	5.0	2.1	1		04/07/17 17:33	87-61-6	
1,2,4-Trichlorobenzene	<2.2	ug/L	5.0	2.2	1		04/07/17 17:33	120-82-1	
1,1,1-Trichloroethane	<0.50	ug/L	1.0	0.50	1		04/07/17 17:33	71-55-6	
1,1,2-Trichloroethane	<0.20	ug/L	1.0	0.20	1		04/07/17 17:33	79-00-5	
Trichloroethene	<0.33	ug/L	1.0	0.33	1		04/07/17 17:33	79-01-6	
Trichlorofluoromethane	<0.18	ug/L	1.0	0.18	1		04/07/17 17:33	75-69-4	
1,2,3-Trichloropropane	<0.50	ug/L	1.0	0.50	1		04/07/17 17:33	96-18-4	
1,2,4-Trimethylbenzene	<0.50	ug/L	1.0	0.50	1		04/07/17 17:33	95-63-6	
1,3,5-Trimethylbenzene	<0.50	ug/L	1.0	0.50	1		04/07/17 17:33	108-67-8	
Vinyl chloride	<0.18	ug/L	1.0	0.18	1		04/07/17 17:33	75-01-4	
m&p-Xylene	<1.0	ug/L	2.0	1.0	1		04/07/17 17:33	179601-23-1	
o-Xylene	<0.50	ug/L	1.0	0.50	1		04/07/17 17:33	95-47-6	
Surrogates									
4-Bromofluorobenzene (S)	87	%	70-130		1		04/07/17 17:33	460-00-4	
Dibromofluoromethane (S)	105	%	70-130		1		04/07/17 17:33	1868-53-7	
Toluene-d8 (S)	87	%	70-130		1		04/07/17 17:33	2037-26-5	
Chromium, Hexavalent Analytical Method: SM 3500-Cr B (Online)									
Chromium, Hexavalent	12.2	mg/L	4.3	1.3	250		04/05/17 16:00		1q

REPORT OF LABORATORY ANALYSIS

This report shall not be reproduced, except in full,
without the written consent of Pace Analytical Services, LLC.

ANALYTICAL RESULTS

Project: 17-100 ALBANY FMR CHROME PLANT

Pace Project No.: 40147765

Sample: OUTFALL 001 **Lab ID: 40147765021** Collected: 04/05/17 11:00 Received: 04/05/17 13:15 Matrix: Water

Parameters	Results	Units	LOQ	LOD	DF	Prepared	Analyzed	CAS No.	Qual
6010 MET ICP		Analytical Method: EPA 6010 Preparation Method: EPA 3010							
Aluminum	91.4J	ug/L	500	55.5	1	04/07/17 08:50	04/07/17 15:51	7429-90-5	
Arsenic	<8.3	ug/L	25.0	8.3	1	04/07/17 08:50	04/07/17 15:51	7440-38-2	
Cadmium	<1.3	ug/L	5.0	1.3	1	04/07/17 08:50	04/07/17 15:51	7440-43-9	
Chromium	67.4	ug/L	10.0	2.5	1	04/07/17 08:50	04/07/17 15:51	7440-47-3	
Copper	10.6J	ug/L	20.0	6.3	1	04/07/17 08:50	04/07/17 15:51	7440-50-8	
Lead	<4.3	ug/L	13.0	4.3	1	04/07/17 08:50	04/07/17 15:51	7439-92-1	
Nickel	3.0J	ug/L	10.0	2.6	1	04/07/17 08:50	04/07/17 15:51	7440-02-0	
Zinc	15.2J	ug/L	40.0	9.3	1	04/07/17 08:50	04/07/17 15:51	7440-66-6	
7470 Mercury		Analytical Method: EPA 7470 Preparation Method: EPA 7470							
Mercury	<0.13	ug/L	0.42	0.13	1	04/06/17 13:50	04/07/17 09:29	7439-97-6	
Chromium, Hexavalent		Analytical Method: SM 3500-Cr B (Online)							
Chromium, Hexavalent	0.068	mg/L	0.017	0.0051	1		04/05/17 16:00		
335.4 Cyanide, Total		Analytical Method: EPA 335.4 Preparation Method: EPA 335.4							
Cyanide	<0.0068	mg/L	0.023	0.0068	1	04/12/17 10:20	04/12/17 12:42	57-12-5	

REPORT OF LABORATORY ANALYSIS

This report shall not be reproduced, except in full,
without the written consent of Pace Analytical Services, LLC.

ANALYTICAL RESULTS

Project: 17-100 ALBANY FMR CHROME PLANT

Pace Project No.: 40147765

Sample: CANISTER A **Lab ID: 40147765022** Collected: 04/05/17 11:00 Received: 04/05/17 13:15 Matrix: Water

Parameters	Results	Units	LOQ	LOD	DF	Prepared	Analyzed	CAS No.	Qual
6010 MET ICP									
Analytical Method: EPA 6010 Preparation Method: EPA 3010									
Chromium	890	ug/L	10.0	2.5	1	04/07/17 08:50	04/07/17 16:11	7440-47-3	

REPORT OF LABORATORY ANALYSIS

This report shall not be reproduced, except in full,
without the written consent of Pace Analytical Services, LLC.

QUALITY CONTROL DATA

Project: 17-100 ALBANY FMR CHROME PLANT

Pace Project No.: 40147765

QC Batch: 252501 Analysis Method: EPA 6010
 QC Batch Method: EPA 6010 Analysis Description: ICP Metals, Trace, Dissolved
 Associated Lab Samples: 40147765001, 40147765002, 40147765003, 40147765004, 40147765005, 40147765006, 40147765007,
 40147765008, 40147765009, 40147765010, 40147765011, 40147765012, 40147765013, 40147765014,
 40147765015, 40147765016, 40147765017

METHOD BLANK: 1489711 Matrix: Water
 Associated Lab Samples: 40147765001, 40147765002, 40147765003, 40147765004, 40147765005, 40147765006, 40147765007,
 40147765008, 40147765009, 40147765010, 40147765011, 40147765012, 40147765013, 40147765014,
 40147765015, 40147765016, 40147765017

Parameter	Units	Blank Result	Reporting Limit	Analyzed	Qualifiers
Chromium, Dissolved	ug/L	<2.5	10.0	04/13/17 11:04	

LABORATORY CONTROL SAMPLE: 1489712

Parameter	Units	Spike Conc.	LCS Result	LCS % Rec	% Rec Limits	Qualifiers
Chromium, Dissolved	ug/L	500	530	106	80-120	

MATRIX SPIKE & MATRIX SPIKE DUPLICATE: 1489713 1489714

Parameter	Units	40147765001 Result	MS Spike Conc.	MSD Spike Conc.	MS Result	MSD Result	MS % Rec	MSD % Rec	% Rec Limits	RPD	Max RPD	Qual
Chromium, Dissolved	ug/L	<2.5	500	500	513	512	103	102	75-125	0	20	

Results presented on this page are in the units indicated by the "Units" column except where an alternate unit is presented to the right of the result.

REPORT OF LABORATORY ANALYSIS

This report shall not be reproduced, except in full,
without the written consent of Pace Analytical Services, LLC.

QUALITY CONTROL DATA

Project: 17-100 ALBANY FMR CHROME PLANT

Pace Project No.: 40147765

QC Batch: 252033

Analysis Method: EPA 7470

QC Batch Method: EPA 7470

Analysis Description: 7470 Mercury

Associated Lab Samples: 40147765021

METHOD BLANK: 1487141

Matrix: Water

Associated Lab Samples: 40147765021

Parameter	Units	Blank Result	Reporting Limit	Analyzed	Qualifiers
Mercury	ug/L	<0.13	0.42	04/07/17 08:33	

LABORATORY CONTROL SAMPLE: 1487142

Parameter	Units	Spike Conc.	LCS Result	LCS % Rec	% Rec Limits	Qualifiers
Mercury	ug/L	5	4.4	88	85-115	

MATRIX SPIKE & MATRIX SPIKE DUPLICATE: 1487143 1487144

Parameter	Units	40147559001		MSD		MS		MSD		% Rec Limits	RPD	Max RPD	Qual
		Result	MS Spike Conc.	MSD Spike Conc.	MS Result	MSD Result	% Rec	% Rec					
Mercury	ug/L	<0.13	5	5	4.4	4.3	87	86	85-115	1	20		

Results presented on this page are in the units indicated by the "Units" column except where an alternate unit is presented to the right of the result.

REPORT OF LABORATORY ANALYSIS

This report shall not be reproduced, except in full,
without the written consent of Pace Analytical Services, LLC.

QUALITY CONTROL DATA

Project: 17-100 ALBANY FMR CHROME PLANT
Pace Project No.: 40147765

QC Batch: 252119 Analysis Method: EPA 6010
QC Batch Method: EPA 3010 Analysis Description: 6010 MET
Associated Lab Samples: 40147765019, 40147765020, 40147765021, 40147765022

METHOD BLANK: 1487720 Matrix: Water
Associated Lab Samples: 40147765019, 40147765020, 40147765021, 40147765022

Parameter	Units	Blank Result	Reporting Limit	Analyzed	Qualifiers
Aluminum	ug/L	<55.5	500	04/07/17 15:46	
Arsenic	ug/L	<8.3	25.0	04/07/17 15:46	
Cadmium	ug/L	<1.3	5.0	04/07/17 15:46	
Chromium	ug/L	<2.5	10.0	04/07/17 15:46	
Copper	ug/L	<6.3	20.0	04/07/17 15:46	
Lead	ug/L	<4.3	13.0	04/07/17 15:46	
Nickel	ug/L	<2.6	10.0	04/07/17 15:46	
Zinc	ug/L	<9.3	40.0	04/07/17 15:46	

LABORATORY CONTROL SAMPLE: 1487721

Parameter	Units	Spike Conc.	LCS Result	LCS % Rec	% Rec Limits	Qualifiers
Aluminum	ug/L	5000	5060	101	80-120	
Arsenic	ug/L	500	458	92	80-120	
Cadmium	ug/L	500	473	95	80-120	
Chromium	ug/L	500	513	103	80-120	
Copper	ug/L	500	472	94	80-120	
Lead	ug/L	500	481	96	80-120	
Nickel	ug/L	500	477	95	80-120	
Zinc	ug/L	500	496	99	80-120	

MATRIX SPIKE & MATRIX SPIKE DUPLICATE: 1487722 1487723

Parameter	Units	MS		MSD		MS % Rec	MSD % Rec	% Rec Limits	Max RPD	Qual	
		40147765021 Result	Spike Conc.	Spike Conc.	MS Result						MSD Result
Aluminum	ug/L	91.4J	5000	5000	5070	5090	100	100	75-125	0	20
Arsenic	ug/L	<8.3	500	500	467	464	93	93	75-125	1	20
Cadmium	ug/L	<1.3	500	500	489	476	98	95	75-125	3	20
Chromium	ug/L	67.4	500	500	561	550	99	97	75-125	2	20
Copper	ug/L	10.6J	500	500	497	489	97	96	75-125	2	20
Lead	ug/L	<4.3	500	500	462	451	92	90	75-125	2	20
Nickel	ug/L	3.0J	500	500	463	456	92	91	75-125	2	20
Zinc	ug/L	15.2J	500	500	483	476	94	92	75-125	2	20

Results presented on this page are in the units indicated by the "Units" column except where an alternate unit is presented to the right of the result.

REPORT OF LABORATORY ANALYSIS

This report shall not be reproduced, except in full,
without the written consent of Pace Analytical Services, LLC.

QUALITY CONTROL DATA

Project: 17-100 ALBANY FMR CHROME PLANT

Pace Project No.: 40147765

QC Batch: 251954 Analysis Method: EPA 8260
QC Batch Method: EPA 8260 Analysis Description: 8260 MSV
Associated Lab Samples: 40147765006, 40147765011, 40147765013, 40147765018, 40147765019, 40147765020

METHOD BLANK: 1486760 Matrix: Water
Associated Lab Samples: 40147765006, 40147765011, 40147765013, 40147765018, 40147765019, 40147765020

Parameter	Units	Blank Result	Reporting Limit	Analyzed	Qualifiers
1,1,1,2-Tetrachloroethane	ug/L	<0.18	1.0	04/07/17 06:52	
1,1,1-Trichloroethane	ug/L	<0.50	1.0	04/07/17 06:52	
1,1,2,2-Tetrachloroethane	ug/L	<0.25	1.0	04/07/17 06:52	
1,1,2-Trichloroethane	ug/L	<0.20	1.0	04/07/17 06:52	
1,1-Dichloroethane	ug/L	<0.24	1.0	04/07/17 06:52	
1,1-Dichloroethene	ug/L	<0.41	1.0	04/07/17 06:52	
1,1-Dichloropropene	ug/L	<0.44	1.0	04/07/17 06:52	
1,2,3-Trichlorobenzene	ug/L	<2.1	5.0	04/07/17 06:52	
1,2,3-Trichloropropane	ug/L	<0.50	1.0	04/07/17 06:52	
1,2,4-Trichlorobenzene	ug/L	<2.2	5.0	04/07/17 06:52	
1,2,4-Trimethylbenzene	ug/L	<0.50	1.0	04/07/17 06:52	
1,2-Dibromo-3-chloropropane	ug/L	<2.2	5.0	04/07/17 06:52	
1,2-Dibromoethane (EDB)	ug/L	<0.18	1.0	04/07/17 06:52	
1,2-Dichlorobenzene	ug/L	<0.50	1.0	04/07/17 06:52	
1,2-Dichloroethane	ug/L	<0.17	1.0	04/07/17 06:52	
1,2-Dichloropropane	ug/L	<0.23	1.0	04/07/17 06:52	
1,3,5-Trimethylbenzene	ug/L	<0.50	1.0	04/07/17 06:52	
1,3-Dichlorobenzene	ug/L	<0.50	1.0	04/07/17 06:52	
1,3-Dichloropropane	ug/L	<0.50	1.0	04/07/17 06:52	
1,4-Dichlorobenzene	ug/L	<0.50	1.0	04/07/17 06:52	
2,2-Dichloropropane	ug/L	<0.48	1.0	04/07/17 06:52	
2-Chlorotoluene	ug/L	<0.50	1.0	04/07/17 06:52	
4-Chlorotoluene	ug/L	<0.21	1.0	04/07/17 06:52	
Benzene	ug/L	<0.50	1.0	04/07/17 06:52	
Bromobenzene	ug/L	<0.23	1.0	04/07/17 06:52	
Bromochloromethane	ug/L	<0.34	1.0	04/07/17 06:52	
Bromodichloromethane	ug/L	<0.50	1.0	04/07/17 06:52	
Bromoform	ug/L	<0.50	1.0	04/07/17 06:52	
Bromomethane	ug/L	<2.4	5.0	04/07/17 06:52	
Carbon tetrachloride	ug/L	<0.50	1.0	04/07/17 06:52	
Chlorobenzene	ug/L	<0.50	1.0	04/07/17 06:52	
Chloroethane	ug/L	<0.37	1.0	04/07/17 06:52	
Chloroform	ug/L	<2.5	5.0	04/07/17 06:52	
Chloromethane	ug/L	<0.50	1.0	04/07/17 06:52	
cis-1,2-Dichloroethene	ug/L	<0.26	1.0	04/07/17 06:52	
cis-1,3-Dichloropropene	ug/L	<0.50	1.0	04/07/17 06:52	
Dibromochloromethane	ug/L	<0.50	1.0	04/07/17 06:52	
Dibromomethane	ug/L	<0.43	1.0	04/07/17 06:52	
Dichlorodifluoromethane	ug/L	<0.22	1.0	04/07/17 06:52	
Diisopropyl ether	ug/L	<0.50	1.0	04/07/17 06:52	
Ethylbenzene	ug/L	<0.50	1.0	04/07/17 06:52	

Results presented on this page are in the units indicated by the "Units" column except where an alternate unit is presented to the right of the result.

REPORT OF LABORATORY ANALYSIS

This report shall not be reproduced, except in full,
without the written consent of Pace Analytical Services, LLC.

QUALITY CONTROL DATA

Project: 17-100 ALBANY FMR CHROME PLANT

Pace Project No.: 40147765

METHOD BLANK: 1486760

Matrix: Water

Associated Lab Samples: 40147765006, 40147765011, 40147765013, 40147765018, 40147765019, 40147765020

Parameter	Units	Blank Result	Reporting Limit	Analyzed	Qualifiers
Hexachloro-1,3-butadiene	ug/L	<2.1	5.0	04/07/17 06:52	
Isopropylbenzene (Cumene)	ug/L	<0.14	1.0	04/07/17 06:52	
m&p-Xylene	ug/L	<1.0	2.0	04/07/17 06:52	
Methyl-tert-butyl ether	ug/L	<0.17	1.0	04/07/17 06:52	
Methylene Chloride	ug/L	<0.23	1.0	04/07/17 06:52	
n-Butylbenzene	ug/L	<0.50	1.0	04/07/17 06:52	
n-Propylbenzene	ug/L	<0.50	1.0	04/07/17 06:52	
Naphthalene	ug/L	<2.5	5.0	04/07/17 06:52	
o-Xylene	ug/L	<0.50	1.0	04/07/17 06:52	
p-Isopropyltoluene	ug/L	<0.50	1.0	04/07/17 06:52	
sec-Butylbenzene	ug/L	<2.2	5.0	04/07/17 06:52	
Styrene	ug/L	<0.50	1.0	04/07/17 06:52	
tert-Butylbenzene	ug/L	<0.18	1.0	04/07/17 06:52	
Tetrachloroethene	ug/L	<0.50	1.0	04/07/17 06:52	
Toluene	ug/L	<0.50	1.0	04/07/17 06:52	
trans-1,2-Dichloroethene	ug/L	<0.26	1.0	04/07/17 06:52	
trans-1,3-Dichloropropene	ug/L	<0.23	1.0	04/07/17 06:52	
Trichloroethene	ug/L	<0.33	1.0	04/07/17 06:52	
Trichlorofluoromethane	ug/L	<0.18	1.0	04/07/17 06:52	
Vinyl chloride	ug/L	<0.18	1.0	04/07/17 06:52	
4-Bromofluorobenzene (S)	%	90	70-130	04/07/17 06:52	
Dibromofluoromethane (S)	%	107	70-130	04/07/17 06:52	
Toluene-d8 (S)	%	90	70-130	04/07/17 06:52	

LABORATORY CONTROL SAMPLE: 1486761

Parameter	Units	Spike Conc.	LCS Result	LCS % Rec	% Rec Limits	Qualifiers
1,1,1-Trichloroethane	ug/L	50	51.6	103	70-131	
1,1,2,2-Tetrachloroethane	ug/L	50	40.1	80	67-130	
1,1,2-Trichloroethane	ug/L	50	44.5	89	70-130	
1,1-Dichloroethane	ug/L	50	49.7	99	70-133	
1,1-Dichloroethene	ug/L	50	51.9	104	70-130	
1,2,4-Trichlorobenzene	ug/L	50	46.4	93	70-130	
1,2-Dibromo-3-chloropropane	ug/L	50	36.6	73	50-150	
1,2-Dibromoethane (EDB)	ug/L	50	47.7	95	70-130	
1,2-Dichlorobenzene	ug/L	50	47.7	95	70-130	
1,2-Dichloroethane	ug/L	50	40.6	81	70-130	
1,2-Dichloropropane	ug/L	50	50.3	101	70-130	
1,3-Dichlorobenzene	ug/L	50	47.5	95	70-130	
1,4-Dichlorobenzene	ug/L	50	48.6	97	70-130	
Benzene	ug/L	50	38.5	77	60-135	
Bromodichloromethane	ug/L	50	51.0	102	70-130	
Bromoform	ug/L	50	48.2	96	70-130	
Bromomethane	ug/L	50	38.0	76	33-130	

Results presented on this page are in the units indicated by the "Units" column except where an alternate unit is presented to the right of the result.

REPORT OF LABORATORY ANALYSIS

This report shall not be reproduced, except in full,
without the written consent of Pace Analytical Services, LLC.

QUALITY CONTROL DATA

Project: 17-100 ALBANY FMR CHROME PLANT

Pace Project No.: 40147765

LABORATORY CONTROL SAMPLE: 1486761

Parameter	Units	Spike Conc.	LCS Result	LCS % Rec	% Rec Limits	Qualifiers
Carbon tetrachloride	ug/L	50	50.7	101	70-138	
Chlorobenzene	ug/L	50	49.1	98	70-130	
Chloroethane	ug/L	50	43.0	86	51-130	
Chloroform	ug/L	50	47.2	94	70-130	
Chloromethane	ug/L	50	40.6	81	25-132	
cis-1,2-Dichloroethene	ug/L	50	48.6	97	69-130	
cis-1,3-Dichloropropene	ug/L	50	46.1	92	70-130	
Dibromochloromethane	ug/L	50	47.3	95	70-130	
Dichlorodifluoromethane	ug/L	50	55.5	111	23-130	
Ethylbenzene	ug/L	50	47.5	95	70-136	
Isopropylbenzene (Cumene)	ug/L	50	48.6	97	70-140	
m&p-Xylene	ug/L	100	99.2	99	70-138	
Methyl-tert-butyl ether	ug/L	50	44.9	90	66-138	
Methylene Chloride	ug/L	50	51.2	102	70-130	
o-Xylene	ug/L	50	47.5	95	70-134	
Styrene	ug/L	50	49.3	99	70-133	
Tetrachloroethene	ug/L	50	54.5	109	70-138	
Toluene	ug/L	50	48.5	97	70-130	
trans-1,2-Dichloroethene	ug/L	50	52.9	106	70-131	
trans-1,3-Dichloropropene	ug/L	50	37.5	75	69-130	
Trichloroethene	ug/L	50	56.8	114	70-130	
Trichlorofluoromethane	ug/L	50	60.5	121	50-150	
Vinyl chloride	ug/L	50	51.8	104	49-130	
4-Bromofluorobenzene (S)	%			94	70-130	
Dibromofluoromethane (S)	%			107	70-130	
Toluene-d8 (S)	%			90	70-130	

MATRIX SPIKE & MATRIX SPIKE DUPLICATE: 1487668 1487669

Parameter	Units	40147737003		MSD		MSD		% Rec	% Rec	% Rec	Limits	RPD	Max RPD	Qual
		Result	MS Spike Conc.	MSD Spike Conc.	MS Result	MSD Result								
1,1,1-Trichloroethane	ug/L	<0.50	50	50	52.2	54.4	104	109	70-134	4	20			
1,1,2,2-Tetrachloroethane	ug/L	<0.25	50	50	39.1	41.0	78	82	67-130	5	20			
1,1,2-Trichloroethane	ug/L	<0.20	50	50	43.0	45.7	86	91	70-130	6	20			
1,1-Dichloroethane	ug/L	1.4	50	50	48.8	55.8	95	109	70-134	13	20			
1,1-Dichloroethene	ug/L	<0.41	50	50	57.9	58.6	116	117	68-136	1	20			
1,2,4-Trichlorobenzene	ug/L	<2.2	50	50	46.3	48.6	93	97	62-139	5	20			
1,2-Dibromo-3-chloropropane	ug/L	<2.2	50	50	35.2	36.9	70	74	50-150	5	20			
1,2-Dibromoethane (EDB)	ug/L	<0.18	50	50	45.9	48.7	92	97	70-130	6	20			
1,2-Dichlorobenzene	ug/L	<0.50	50	50	47.1	49.3	94	99	70-130	5	20			
1,2-Dichloroethane	ug/L	<0.17	50	50	41.6	51.3	83	103	70-130	21	20	R1		
1,2-Dichloropropane	ug/L	0.29J	50	50	43.4	46.0	86	91	70-130	6	20			
1,3-Dichlorobenzene	ug/L	<0.50	50	50	47.1	49.3	94	99	70-131	4	20			
1,4-Dichlorobenzene	ug/L	<0.50	50	50	48.6	50.3	97	101	70-130	3	20			

Results presented on this page are in the units indicated by the "Units" column except where an alternate unit is presented to the right of the result.

REPORT OF LABORATORY ANALYSIS

This report shall not be reproduced, except in full,
without the written consent of Pace Analytical Services, LLC.

QUALITY CONTROL DATA

Project: 17-100 ALBANY FMR CHROME PLANT

Pace Project No.: 40147765

Parameter	Units	40147737003		1487668		1487669		% Rec	% Rec	Limits	RPD	Max RPD	Qual
		Result	MS Spike Conc.	MSD Spike Conc.	MS Result	MSD Result	MS % Rec						
Benzene	ug/L	<0.50	50	50	40.4	53.2	80	106	57-138	27	20	R1	
Bromodichloromethane	ug/L	<0.50	50	50	43.2	46.0	86	92	70-130	6	20		
Bromoform	ug/L	<0.50	50	50	46.4	49.5	93	99	70-130	6	20		
Bromomethane	ug/L	<2.4	50	50	41.0	48.9	82	98	33-130	18	27		
Carbon tetrachloride	ug/L	<0.50	50	50	50.8	52.2	102	104	70-138	3	20		
Chlorobenzene	ug/L	<0.50	50	50	47.9	50.2	96	100	70-130	5	20		
Chloroethane	ug/L	<0.37	50	50	43.5	48.6	87	97	51-130	11	20		
Chloroform	ug/L	<2.5	50	50	49.2	49.5	98	99	70-130	1	20		
Chloromethane	ug/L	<0.50	50	50	41.5	47.5	83	95	25-132	13	20		
cis-1,2-Dichloroethene	ug/L	3.1	50	50	54.3	58.0	102	110	61-140	7	20		
cis-1,3-Dichloropropene	ug/L	<0.50	50	50	39.0	41.6	78	83	70-130	6	20		
Dibromochloromethane	ug/L	<0.50	50	50	46.5	49.1	93	98	70-130	5	20		
Dichlorodifluoromethane	ug/L	<0.22	50	50	55.5	61.4	111	123	23-130	10	20		
Ethylbenzene	ug/L	<0.50	50	50	46.2	48.7	92	97	70-138	5	20		
Isopropylbenzene (Cumene)	ug/L	<0.14	50	50	47.5	49.9	95	100	70-152	5	20		
m&p-Xylene	ug/L	<1.0	100	100	96.0	102	96	102	70-140	6	20		
Methyl-tert-butyl ether	ug/L	<0.17	50	50	45.4	50.2	91	100	66-139	10	20		
Methylene Chloride	ug/L	<0.23	50	50	53.3	57.3	107	115	70-130	7	20		
o-Xylene	ug/L	<0.50	50	50	46.7	49.0	93	98	70-134	5	20		
Styrene	ug/L	<0.50	50	50	47.6	50.1	95	100	70-138	5	20		
Tetrachloroethene	ug/L	<0.50	50	50	53.0	55.8	106	111	70-148	5	20		
Toluene	ug/L	<0.50	50	50	47.1	49.4	94	99	70-130	5	20		
trans-1,2-Dichloroethene	ug/L	<0.26	50	50	54.2	59.6	108	119	70-133	10	20		
trans-1,3-Dichloropropene	ug/L	<0.23	50	50	36.5	39.1	73	78	69-130	7	20		
Trichloroethene	ug/L	<0.33	50	50	48.9	51.8	97	103	70-131	6	20		
Trichlorofluoromethane	ug/L	<0.18	50	50	61.1	67.4	122	135	50-150	10	20		
Vinyl chloride	ug/L	0.76J	50	50	53.3	59.1	105	117	49-133	10	20		
4-Bromofluorobenzene (S)	%						93	94	70-130				
Dibromofluoromethane (S)	%						111	106	70-130				
Toluene-d8 (S)	%						90	90	70-130				

Results presented on this page are in the units indicated by the "Units" column except where an alternate unit is presented to the right of the result.

REPORT OF LABORATORY ANALYSIS

This report shall not be reproduced, except in full,
without the written consent of Pace Analytical Services, LLC.

QUALITY CONTROL DATA

Project: 17-100 ALBANY FMR CHROME PLANT
Pace Project No.: 40147765

QC Batch: 251949 Analysis Method: SM 3500-Cr B (Online)
QC Batch Method: SM 3500-Cr B (Online) Analysis Description: Chromium, Hexavalent by 3500
Associated Lab Samples: 40147765001, 40147765002, 40147765003, 40147765004, 40147765005, 40147765006, 40147765007, 40147765008, 40147765009, 40147765010, 40147765011, 40147765012, 40147765013, 40147765014, 40147765015, 40147765016, 40147765017, 40147765019, 40147765020, 40147765021

METHOD BLANK: 1486744 Matrix: Water
Associated Lab Samples: 40147765001, 40147765002, 40147765003, 40147765004, 40147765005, 40147765006, 40147765007, 40147765008, 40147765009, 40147765010, 40147765011, 40147765012, 40147765013, 40147765014, 40147765015, 40147765016, 40147765017, 40147765019, 40147765020, 40147765021

Parameter	Units	Blank Result	Reporting Limit	Analyzed	Qualifiers
Chromium, Hexavalent	mg/L	<0.0051	0.017	04/05/17 16:00	

LABORATORY CONTROL SAMPLE: 1486745

Parameter	Units	Spike Conc.	LCS Result	LCS % Rec	% Rec Limits	Qualifiers
Chromium, Hexavalent	mg/L	.3	0.28	95	90-110	

MATRIX SPIKE & MATRIX SPIKE DUPLICATE: 1486746 1486747

Parameter	Units	40147765001 Result	MS Spike Conc.	MSD Spike Conc.	MS Result	MSD Result	MS % Rec	MSD % Rec	% Rec Limits	RPD	Max RPD	Qual
Chromium, Hexavalent	mg/L	<0.0039	.3	.3	0.29	0.29	97	98	90-110	1	20	

MATRIX SPIKE & MATRIX SPIKE DUPLICATE: 1486748 1486749

Parameter	Units	40147765011 Result	MS Spike Conc.	MSD Spike Conc.	MS Result	MSD Result	MS % Rec	MSD % Rec	% Rec Limits	RPD	Max RPD	Qual
Chromium, Hexavalent	mg/L	25.0	75	75	103	97.8	103	97	90-110	5	20	

Results presented on this page are in the units indicated by the "Units" column except where an alternate unit is presented to the right of the result.

REPORT OF LABORATORY ANALYSIS

This report shall not be reproduced, except in full,
without the written consent of Pace Analytical Services, LLC.

QUALITY CONTROL DATA

Project: 17-100 ALBANY FMR CHROME PLANT

Pace Project No.: 40147765

QC Batch: 252447 Analysis Method: EPA 335.4
QC Batch Method: EPA 335.4 Analysis Description: 335.4 Cyanide, Total
Associated Lab Samples: 40147765021

METHOD BLANK: 1489501 Matrix: Water
Associated Lab Samples: 40147765021

Parameter	Units	Blank Result	Reporting Limit	Analyzed	Qualifiers
Cyanide	mg/L	<0.0068	0.023	04/12/17 12:39	

LABORATORY CONTROL SAMPLE: 1489502

Parameter	Units	Spike Conc.	LCS Result	LCS % Rec	% Rec Limits	Qualifiers
Cyanide	mg/L	.1	0.10	100	90-110	

MATRIX SPIKE & MATRIX SPIKE DUPLICATE: 1489503 1489504

Parameter	Units	40147862001 Result	MS	MSD	MS Result	MSD Result	MS % Rec	MSD % Rec	% Rec Limits	RPD	Max RPD	Qual
			Spike Conc.	Spike Conc.								
Cyanide	mg/L	<0.0068	.1	.1	0.10	0.10	100	103	90-110	2	20	

MATRIX SPIKE & MATRIX SPIKE DUPLICATE: 1489505 1489506

Parameter	Units	40148063001 Result	MS	MSD	MS Result	MSD Result	MS % Rec	MSD % Rec	% Rec Limits	RPD	Max RPD	Qual
			Spike Conc.	Spike Conc.								
Cyanide	mg/L	<0.041	.6	.6	0.60	0.60	100	100	90-110	0	20	

Results presented on this page are in the units indicated by the "Units" column except where an alternate unit is presented to the right of the result.

REPORT OF LABORATORY ANALYSIS

This report shall not be reproduced, except in full,
without the written consent of Pace Analytical Services, LLC.

QUALIFIERS

Project: 17-100 ALBANY FMR CHROME PLANT

Pace Project No.: 40147765

DEFINITIONS

DF - Dilution Factor, if reported, represents the factor applied to the reported data due to dilution of the sample aliquot.

ND - Not Detected at or above LOD.

J - Estimated concentration at or above the LOD and below the LOQ.

LOD - Limit of Detection adjusted for dilution factor and percent moisture.

LOQ - Limit of Quantitation adjusted for dilution factor and percent moisture.

S - Surrogate

1,2-Diphenylhydrazine decomposes to and cannot be separated from Azobenzene using Method 8270. The result for each analyte is a combined concentration.

Consistent with EPA guidelines, unrounded data are displayed and have been used to calculate % recovery and RPD values.

LCS(D) - Laboratory Control Sample (Duplicate)

MS(D) - Matrix Spike (Duplicate)

DUP - Sample Duplicate

RPD - Relative Percent Difference

NC - Not Calculable.

SG - Silica Gel - Clean-Up

U - Indicates the compound was analyzed for, but not detected at or above the adjusted LOD.

N-Nitrosodiphenylamine decomposes and cannot be separated from Diphenylamine using Method 8270. The result reported for each analyte is a combined concentration.

Pace Analytical is TNI accredited. Contact your Pace PM for the current list of accredited analytes.

TNI - The NELAC Institute.

LABORATORIES

PASI-G Pace Analytical Services - Green Bay

ANALYTE QUALIFIERS

1q Analyte was measured in the associated method blank at a concentration of -0.0061 mg/L.

R1 RPD value was outside control limits.

REPORT OF LABORATORY ANALYSIS

This report shall not be reproduced, except in full,
without the written consent of Pace Analytical Services, LLC.

QUALITY CONTROL DATA CROSS REFERENCE TABLE

Project: 17-100 ALBANY FMR CHROME PLANT
Pace Project No.: 40147765

Lab ID	Sample ID	QC Batch Method	QC Batch	Analytical Method	Analytical Batch
40147765019	MANHOLE	EPA 3010	252119	EPA 6010	252173
40147765020	SUMP	EPA 3010	252119	EPA 6010	252173
40147765021	OUTFALL 001	EPA 3010	252119	EPA 6010	252173
40147765022	CANISTER A	EPA 3010	252119	EPA 6010	252173
40147765001	MW-01	EPA 6010	252501		
40147765002	MW-02	EPA 6010	252501		
40147765003	MW-02A	EPA 6010	252501		
40147765004	MW-05	EPA 6010	252501		
40147765005	MW-05A	EPA 6010	252501		
40147765006	MW-10R	EPA 6010	252501		
40147765007	MW-17	EPA 6010	252501		
40147765008	MW-17A	EPA 6010	252501		
40147765009	MW-18	EPA 6010	252501		
40147765010	MW-18A	EPA 6010	252501		
40147765011	MW-19	EPA 6010	252501		
40147765012	MW-19A	EPA 6010	252501		
40147765013	MW-20	EPA 6010	252501		
40147765014	MW-20A	EPA 6010	252501		
40147765015	MW-21	EPA 6010	252501		
40147765016	MW-21A	EPA 6010	252501		
40147765017	BLIND DUPLICATE	EPA 6010	252501		
40147765021	OUTFALL 001	EPA 7470	252033	EPA 7470	252064
40147765006	MW-10R	EPA 8260	251954		
40147765011	MW-19	EPA 8260	251954		
40147765013	MW-20	EPA 8260	251954		
40147765018	TRIP BLANK	EPA 8260	251954		
40147765019	MANHOLE	EPA 8260	251954		
40147765020	SUMP	EPA 8260	251954		
40147765019	MANHOLE	SM 3500-Cr B (Online)	251949		
40147765020	SUMP	SM 3500-Cr B (Online)	251949		
40147765021	OUTFALL 001	SM 3500-Cr B (Online)	251949		
40147765001	MW-01	SM 3500-Cr B (Online)	251949		
40147765002	MW-02	SM 3500-Cr B (Online)	251949		
40147765003	MW-02A	SM 3500-Cr B (Online)	251949		
40147765004	MW-05	SM 3500-Cr B (Online)	251949		
40147765005	MW-05A	SM 3500-Cr B (Online)	251949		
40147765006	MW-10R	SM 3500-Cr B (Online)	251949		
40147765007	MW-17	SM 3500-Cr B (Online)	251949		
40147765008	MW-17A	SM 3500-Cr B (Online)	251949		
40147765009	MW-18	SM 3500-Cr B (Online)	251949		
40147765010	MW-18A	SM 3500-Cr B (Online)	251949		
40147765011	MW-19	SM 3500-Cr B (Online)	251949		
40147765012	MW-19A	SM 3500-Cr B (Online)	251949		
40147765013	MW-20	SM 3500-Cr B (Online)	251949		
40147765014	MW-20A	SM 3500-Cr B (Online)	251949		
40147765015	MW-21	SM 3500-Cr B (Online)	251949		
40147765016	MW-21A	SM 3500-Cr B (Online)	251949		

REPORT OF LABORATORY ANALYSIS

This report shall not be reproduced, except in full,
without the written consent of Pace Analytical Services, LLC.

QUALITY CONTROL DATA CROSS REFERENCE TABLE

Project: 17-100 ALBANY FMR CHROME PLANT
Pace Project No.: 40147765

Lab ID	Sample ID	QC Batch Method	QC Batch	Analytical Method	Analytical Batch
40147765017	BLIND DUPLICATE	SM 3500-Cr B (Online)	251949		
40147765021	OUTFALL 001	EPA 335.4	252447	EPA 335.4	252533

REPORT OF LABORATORY ANALYSIS

This report shall not be reproduced, except in full,
without the written consent of Pace Analytical Services, LLC.

(Please Print Clearly)

UPPER MIDWEST REGION

Company Name: **Stoeger & Associates, LLC**
 Branch/Location: **Appleton, WI**
 Project Contact: **John Stoeger**
 Phone: **920-420-9513**
 Project Number: **17-100**
 Project Name: **Albany Former Chrome Plant**
 Project State: **WI**
 Sampled By (Print): **John Stoeger**
 Sampled By (Sign): **[Signature]**
 PO #:



MN: 612-607-1700 WI: 920-469-2436

40147765

CHAIN OF CUSTODY

Preservation Codes
 A=None B=HCL C=H2SO4 D=HNO3 E=DI Water F=Methanol G=NaOH
 H=Sodium Bisulfate Solution I=Sodium Thiosulfate J=Other

FILTERED?
(YES/NO)
 PRESERVATION
(CODE)*

Y/N	Y	Y	N								
Pick Letter	D	A	B								
Analyses Requested	Total Chromium	Hex Chromium	VOC's								

Quote #: **40147765**

Mail To Contact: **See Attached**

Mail To Company: **Invoicing & Distribution List**

Mail To Address:

Invoice To Contact:

Invoice To Company:

Invoice To Address:

Invoice To Phone:

CLIENT COMMENTS: **Discoloration of VOC Samples due to Chromium in GW. Do not dilute**

LAB COMMENTS (Lab Use Only): **2-250mlp AD**
3-40mlvB
3-40mlvB

Profile #

Data Package Options (billable)
 EPA Level III
 EPA Level IV

MS/MSD
 On your sample (billable)
 NOT needed on your sample

Matrix Codes
 A = Air B = Biota C = Charcoal O = Oil S = Soil SI = Sludge
 W = Water DW = Drinking Water GW = Ground Water SW = Surface Water WW = Waste Water WP = Wipe

PACE LAB #	CLIENT FIELD ID	COLLECTION		MATRIX	Y/N	Total Chromium	Hex Chromium	VOC's							
		DATE	TIME												
001	MW-01	4/5/17	11:40 am	GW	X	X									
002	MW-02			GW	X	X									
003	MW-02A			GW	X	X									
004	MW-05			GW	X	X									
005	MW-05A			GW	X	X									
006	MW-10R			GW	X	X	X								
007	MW-17			GW	X	X									
008	MW-17A			GW	X	X									
009	MW-18			GW	X	X									
010	MW-18A			GW	X	X									
011	MW-19			GW	X	X	X								
012	MW-19A			GW	X	X									

Rush Turnaround Time Requested - Prelims (Rush TAT subject to approval/surcharge) Date Needed:

Relinquished By: **[Signature]** Date/Time: **4-5-17 1:15 pm**

Received By: **[Signature]** Date/Time: **4/5/17 1:35**

Transmit Prelim Rush Results by (complete what you want):

Relinquished By: Date/Time: Received By: Date/Time:

Relinquished By: Date/Time: Received By: Date/Time:

Relinquished By: Date/Time: Received By: Date/Time:

Relinquished By: Date/Time: Received By: Date/Time:

Samples on HOLD are subject to special pricing and release of liability

PACE Project No. **40147765**

Receipt Temp = **ROJ** °C

Sample Receipt pH **OK / Adjusted**

Cooler Custody Seal Present / Not Present **Intact / Not Intact**

(Please Print Clearly)

Company Name: **Stoeger & Associates, LLC**
 Branch/Location: **Appleton, WI**
 Project Contact: **John Stoeger**
 Phone: **920-428-9513**
 Project Number: **17-100**
 Project Name: **Albany Farmer Chrome Plant**
 Project State: **WI**
 Sampled By (Print): **John Stoeger**
 Sampled By (Sign): *JS*
 PO #:



UPPER MIDWEST REGION
 MN: 612-607-1700 WI: 920-469-2436

CHAIN OF CUSTODY

***Preservation Codes**
 A=None B=HCL C=H2SO4 D=HNO3 E=DI Water F=Methanol G=NaOH
 H=Sodium Bisulfate Solution I=Sodium Thiosulfate J=Other

FILTERED?
(YES/NO)
 PRESERVATION
(CODE)*

Y/N	Y	Y	N	N						
Pick Letter	D	A	B	G						
Analyses Requested	Total Chromium	Hex Chromium	VOCs	See Attached #						

Quote #:
 Mail To Contact: **See Attached for**
 Mail To Company: **Invoicing &**
Distribution List
 Mail To Address:
 Invoice To Contact:
 Invoice To Company:
 Invoice To Address:
 Invoice To Phone:
 CLIENT COMMENTS
 LAB COMMENTS (Lab Use Only)
 Profile #

Data Package Options (billable)
 EPA Level III
 EPA Level IV

MS/MSD
 On your sample (billable)
 NOT needed on your sample

Matrix Codes
 A = Air W = Water
 B = Biota DW = Drinking Water
 C = Charcoal GW = Ground Water
 O = Oil SW = Surface Water
 S = Soil WW = Waste Water
 SI = Sludge WP = Wipe

PACE LAB #	CLIENT FIELD ID	COLLECTION		MATRIX
		DATE	TIME	
013	MW-20	4-5-17	11:44a	GW
014	MW-20A			GW
015	MW-21			GW
016	MW-21A			GW
017	Blind Duplicate			GW
018	Trip Blank			
019	Manhole			GW
020	Sump			GW
021	Outfall 001			WW
022	Canister A			WW

* Outfall 001 2-250ml^{AD} 3-40ml^B
 Testing For:
 Aluminum, Arsenic
 Cadmium, Copper
 Cyanide, Lead
 Mercury, Nickel
 Zinc, Total Hex Chrome
 2-40ml^B
 3-40ml^B
 Do not dilute
 VOC Samples
 Discoloration due
 to Chromium in
 GW
 3-250ml^{ADG}
 1-250ml^{AD}

Rush Turnaround Time Requested - Prelims (Rush TAT subject to approval/surcharge)
 Date Needed: *JS* Relinquished By: *JS* Date/Time: 4-5-17 1:15 pm Received By: *John Pace* Date/Time: 4/5/17 1:315 PACE Project No. 40147765

Transmit Prelim Rush Results by (complete what you want):
 Email #1: Relinquished By: Date/Time: Received By: Date/Time: Receipt Temp = 20.1 °C
 Email #2: Relinquished By: Date/Time: Received By: Date/Time: Sample Receipt pH OK / Adjusted
 Telephone: Relinquished By: Date/Time: Received By: Date/Time: Cooler Custody Seal Present / Not Present Intact / Not Intact
 Fax: Relinquished By: Date/Time: Received By: Date/Time:

Samples on HOLD are subject to special pricing and release of liability

40147765

**Albany International, Corp.
Former Chrome Plant Sampling
Invoice and Report Distribution**

Invoice and Report to:

Wayne Fassbender P.G.
EnviroForensics
N16 W23390 Stone Ridge Drive, Suite G
Waukesha, WI 53188

Reports only to:

John Stoeger
Stoeger & Associates, LLC
527 S Story St
Appleton, WI 54914

JP Hammerton
Albany International, Corp.
3601 Electric City Blvd
Kaukauna, WI 54130



Sample Condition Upon Receipt

Pace Analytical Services, Inc.
1241 Bellevue Street, Suite 9
Green Bay, WI 54302

Project #: WO#: 40147765

Client Name: Stoeger & Assoc.

Courier: Fed Ex UPS Client Pace Other:

Tracking #: _____



Custody Seal on Cooler/Box Present: yes no Seals intact: yes no

Custody Seal on Samples Present: yes no Seals intact: yes no

Packing Material: Bubble Wrap Bubble Bags None Other

Thermometer Used: NA Type of Ice: Wet Blue Dry None Samples on ice, cooling process has begun

Cooler Temperature: Uncorr: ROI /Corr: Biological Tissue is Frozen: yes no

Temp Blank Present: yes no

Temp should be above freezing to 6°C for all sample except Biota.
Frozen Biota Samples should be received ≤ 0°C.

Person examining contents:
Date: 4.5.17
Initials: mm

Comments:

Table with 15 rows of inspection items and checkboxes. Includes items like 'Chain of Custody Present', 'Short Hold Time Analysis', 'Rush Turn Around Time Requested', 'Sample Labels match COC', and 'Headspace in VOA Vials'. Includes handwritten notes and dates.

Client Notification/ Resolution: If checked, see attached form for additional comments

Person Contacted: _____ Date/Time: _____

Comments/ Resolution: _____

Project Manager Review: [Signature] Date: 4/5/17