



Wisconsin Public Service Corporation
P.O. Box 19001
Green Bay, WI 54307-9001
www.wisconsinpublicservice.com

July 21, 2022

Ms. Jena Sleboda Braun
Project Manager
United States Environmental Protection Agency
77 W. Jackson Boulevard (SR-6J)
Chicago, Illinois 60604-3590

**RE: June 2022 Monthly Progress Report
Campmarina Former Manufactured Gas Plant
Sheboygan, Wisconsin
Wisconsin Public Services Corporation
CERCLA Docket No. V-W-07-C-862, CERCLIS ID – WIN000510058**

Dear Ms. Sleboda Braun:

Wisconsin Public Services Corporation (WPSC) is providing this monthly progress report for the WPSC Former *Campmarina Manufactured Gas Plant (MGP)* Site.

1) PROGRESS MADE DURING THE PAST MONTH

- Prepared and submitted May 2022 Monthly Progress Report to United States Environmental Protection Agency (USEPA) by June 26, 2022.
- Second quarter field-measured parameter and groundwater sampling event completed June 2, 2022.

2) ANALYTICAL AND OTHER TESTING RESULTS RECEIVED

- Groundwater analytical results summary table from the June 2, 2022 sampling event and a site map have been included with this monthly progress report.

3) PROJECTED WORK

WPSC Actions

- Submit monthly progress report to USEPA by the 26th of the month.
- Support USEPA's Five Year Review, as necessary.

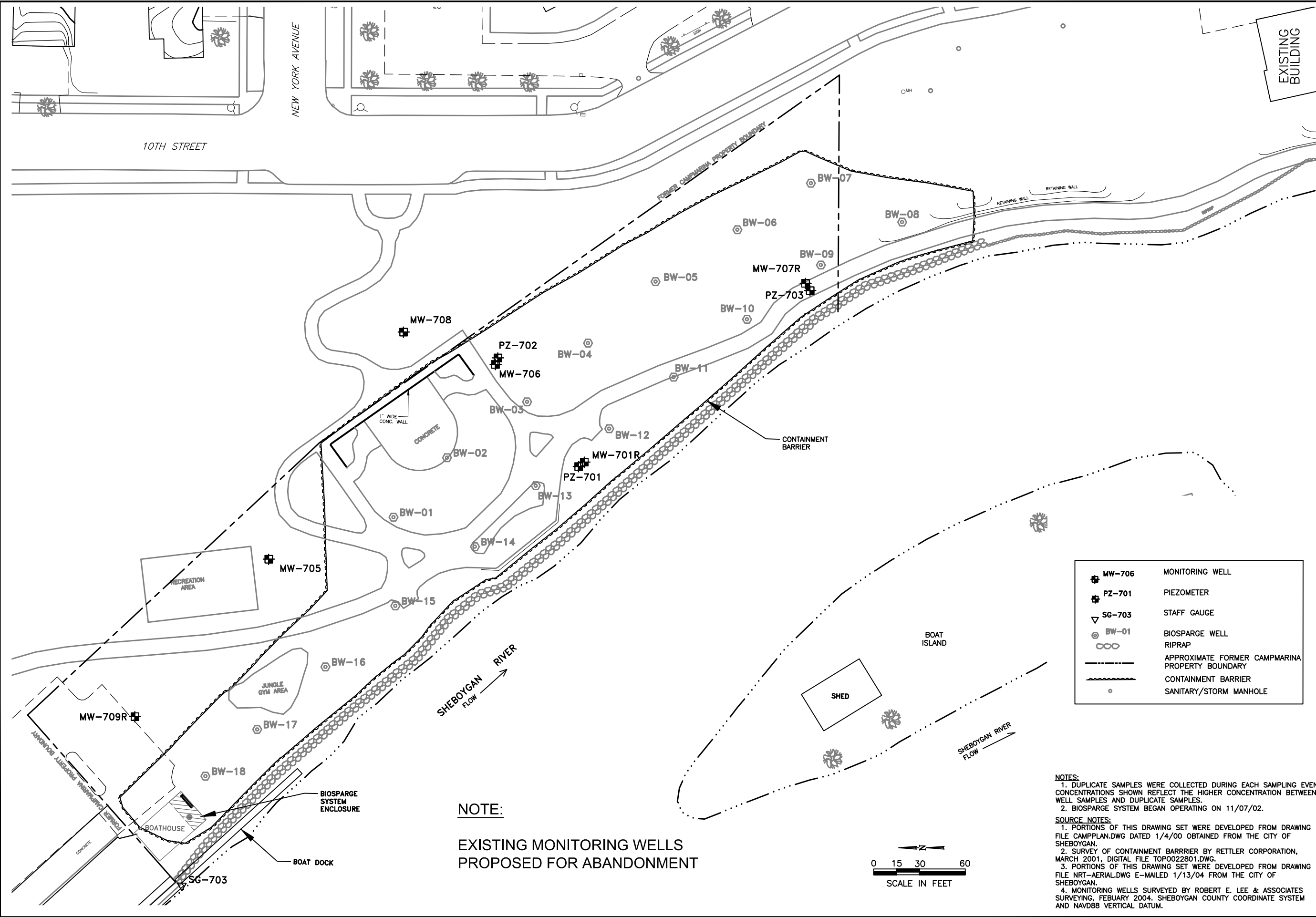
USEPA Actions

- As discussed on the April 30, 2020 conference call, determine a path for deferral of site authority to the State of Wisconsin.
- Prepare Five Year Review.

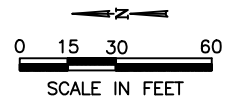
4) PROBLEMS OR POTENTIAL PROBLEMS ENCOUNTERED

- None

Jan 14, 2020 2:17pm PLOTTED BY: CAMRSEAG SAVED BY: ndraskovitch
 Y:\ACADData\Projects\131313\1313-B-3.d-Monitoring Wells.dwg Layout1
 IMAGES: Y:\ACADData\Projects\131313\1313-B-3.d-Monitoring Wells.dwg
 ARCS:



NOTE:
 EXISTING MONITORING WELLS
 PROPOSED FOR ABANDONMENT



	MW-706	MONITORING WELL
	PZ-701	PIEZOMETER
	SG-703	STAFF GAUGE
	BW-01	BIOSPARGE WELL
		RIPRAP
		APPROXIMATE FORMER CAMPMARINA PROPERTY BOUNDARY
		CONTAINMENT BARRIER
		SANITARY/STORM MANHOLE

NOTES:
 1. DUPLICATE SAMPLES WERE COLLECTED DURING EACH SAMPLING EVENT. CONCENTRATIONS SHOWN REFLECT THE HIGHER CONCENTRATION BETWEEN WELL SAMPLES AND DUPLICATE SAMPLES.
 2. BIOSPARGE SYSTEM BEGAN OPERATING ON 11/07/02.

SOURCE NOTES:
 1. PORTIONS OF THIS DRAWING SET WERE DEVELOPED FROM DRAWING FILE CAMPPLAN.DWG DATED 1/4/00 OBTAINED FROM THE CITY OF SHEBOYGAN.
 2. SURVEY OF CONTAINMENT BARRRIER BY RETTLER CORPORATION, MARCH 2001, DIGITAL FILE TOP0022801.DWG.
 3. PORTIONS OF THIS DRAWING SET WERE DEVELOPED FROM DRAWING FILE NRT-AERIAL.DWG E-MAILED 1/13/04 FROM THE CITY OF SHEBOYGAN.
 4. MONITORING WELLS SURVEYED BY ROBERT E. LEE & ASSOCIATES SURVEYING, FEBRUARY 2004. SHEBOYGAN COUNTY COORDINATE SYSTEM AND NAVD88 VERTICAL DATUM.

DRAWN BY:	NWD	DATE:	04/09/13
CHECKED BY:	JJW	DATE:	04/09/13
APPROVED BY:	JMK	DATE:	05/17/13
DRAWING NO:		1313-8-B.3.d-Monitoring Wells	
REFERENCE: SEE INFO BLOCK			

MONITORING WELLS

BRRTS #02-60-000095
 CAMP MARINA MANUFACTURED GAS PLANT
 SHEBOYGAN, WISCONSIN

RAMBOLL

PROJECT NO.
67971

FIGURE NO.
1

Table 1. June 2022 Groundwater Analytical Results

June 2022 Monthly Progress Report
 Wisconsin Public Service Corporation
 Former Manufactured Gas Plant Site - Campmarina
 732 Water Street, Sheboygan, Wisconsin
 BRRTS#: 0260000095 | FID#: 460134950 | USEPA#: WIN000510058

9-digit Code	Sample Location	Sample Date	Inorganic		Organic		Field		Field		Field		Field		Field							
			Nitrogen, NO ₂ + NO ₃ , Total		Sulfate, Total		Methane		Dissolved oxygen		Groundwater, depth to		Oxidation Reduction Potential		pH, Field		Specific Conductance, Field		Temperature, Water		Turbidity, Quantitative	
			µg/L		µg/L		µg/L		mg/l		feet		millivolts		s.u.		µS/cm		Deg C		NTUs	
Reporting Units:			Result	Flag	Result	Flag	Result	Flag	Result	Flag	Result	Flag	Result	Flag	Result	Flag	Result	Flag	Result	Flag	Result	Flag
Tap Water RSL:			NS		NS		NS		NS		NS		NS		NS		NS		NS		NS	
WI Groundwater SL:			NS		NS		NS		NS		NS		NS		NS		NS		NS		NS	
WI Groundwater PAL:			2,000		125,000		NS		NS		NS		NS		NS		NS		NS		NS	
060222005/060222006 (N)	MW-701R	06/02/2022	59	U	2,200	U	5,400		0.06		5.20		-48.6		6.49		2473.2		12.69		60.75	
060222009	MW-706	06/02/2022	900		86,000		59.4		0.09		8.07		-76.8		7.15		1163.4		15.34		25.23	
060222003	MW-707R	06/02/2022	59	U	84,200		7,100		0.18		4.15		-110.5		7.19		1725.7		12.39		0.00	
060222002	MW-708	06/02/2022	410		51,000		0.58	U	2.31		10.03		198.2		7.26		2571.4		24.70		0.00	
060222001	MW-709R	06/02/2022	59	U	32,900		919		0.11		4.47		-129.9		7.10		1715.1		23.29		0.00	
060222007	PZ-701	06/02/2022	900		69,200		2.0	J	0.11		4.97		25.1		7.34		933.12		13.01		0.00	
060222008	PZ-702	06/02/2022	97	J	1,600	J	0.58	U	4.34		6.23		50.7		7.82		216.78		16.84		0.00	
060222004	PZ-703	06/02/2022	59	U	1,000	J	1,080		0.10		4.39		-136.0		8.29		687.61		14.98		0.00	
Total Number of Samples Analyzed:			8		7		8		8		8		8		8		8		8		8	
Number of Detections:			4		7		6		8		8		8		8		8		8		8	
Min:			97		1000		2		0.06		4.15		-136		6.49		216.78		12.39		0	
Max:			900		86,000		7,100		4.34		10.03		198.2		8.29		2,571		24.7		60.75	
Tap Water RSL:			NS		NS		NS		NS		NS		NS		NS		NS		NS		NS	
Number of Samples that Exceed Tap Water RSL:			0		0		0		0		0		0		0		0		0		0	
Groundwater SL:			NS		NS		NS		NS		NS		NS		NS		NS		NS		NS	
Number of Samples that Exceed Groundwater SL:			0		0		0		0		0		0		0		0		0		0	
WI Groundwater PAL:			2,000		125,000		NS		NS		NS		NS		NS		NS		NS		NS	
Number of Samples that Exceed WI Groundwater PAL:			0		0		0		0		0		0		0		0		0		0	

[O:CMD 6/28/22, C:ECB 6/28/22]

Sorted by sample location

Analyte concentration attains or exceeds the standard/screening level for:

<i>Italic</i>	exceeds the Tap Water RSL
Bold	exceeds the Groundwater SL
<u>Underlined</u>	attains or exceeds the WI Groundwater PAL
Pink Highlighting	Groundwater SL exceedance; results only attaining/exceeding the PAL and/or Tap Water criteria are not highlighted.
Yellow Highlighting	analyte exceedance in statistics for one or more samples

Field parameters were analyzed at time of sampling using an InSitu Aquatroll multiparameter sonde. Lab comments, additional data qualifiers and definitions can be found in associated laboratory reports.

Screening Levels and Standards:

Screening Levels used on this table were presented in the Multi-Site Risk Assessment Framework (RAF) Addendum Revision 6, issued in August 2017. Since that time, nine revisions of the RSLs have been published by EPA through November 2021. As a result of these nine revisions, there were no updates to the RSLs necessary for the MGP-related constituents evaluated in this table.

Results & Flags:

J = Estimated Concentration
 U = Concentration was not detected above the reported limit
 NA = Not Applicable

Acronyms:

(N) = Normalized sample locations created from combining parent and field duplicate samples following EPA protocol
 µg/L = micrograms per liter
 µS/cm = microsiemens per centimeter (aka micromhos per centimeter)
 BRRTS = Bureau for Remediation and Redevelopment Tracking System
 BTEX = Benzene, Toluene, Ethylbenzene and Xylene
 Deg C = degrees Celsius
 EPA = Environmental Protection Agency
 MCL = Maximum Contaminant Level
 mg/L = milligrams per liter
 MGP = Manufactured Gas Plant
 NO₂ + NO₃ = nitrite plus nitrate
 NS = No Screening Level/No Standard
 NTU = Nephelometric Turbidity Unit
 PAH = Polycyclic Aromatic Hydrocarbon
 PAL = Preventive Action Limit
 RAF = Risk Assessment Framework
 RSL = Regional Screening Level
 s.u. = standard units
 SL = Screening Level
 USEPA = United States Environmental Protection Agency
 WI = Wisconsin