



Wisconsin Public Service Corporation
P.O. Box 19001
Green Bay, WI 54307-9001
www.wisconsinpublicservice.com

August 22, 2023

Ms. Anna Nguyen
Project Manager
United States Environmental Protection Agency
77 W. Jackson Boulevard (SR-6J)
Chicago, Illinois 60604-3590

**RE: July 2023 Monthly Progress Report
Campmarina Former Manufactured Gas Plant
Sheboygan, Wisconsin
Wisconsin Public Services Corporation
CERCLA Docket No. V-W-07-C-862, CERCLIS ID – WIN000510058**

Dear Ms. Nguyen:

Wisconsin Public Services Corporation (WPSC) is providing this monthly progress report for the WPSC Former *Campmarina Manufactured Gas Plant (MGP)* Site.

1) PROGRESS MADE DURING THE PAST MONTH

- Prepared and submitted June 2023 Monthly Progress Report to United States Environmental Protection Agency (USEPA) by July 26, 2023.

2) ANALYTICAL AND OTHER TESTING RESULTS RECEIVED

- Groundwater analytical results summary table from the June 28, 2022 sampling event and a site map have been included with this monthly progress report.

3) PROJECTED WORK

WPSC Actions

- Submit monthly progress report to USEPA by the 26th of the month.
- Support WDNR's Five Year Review, as necessary.

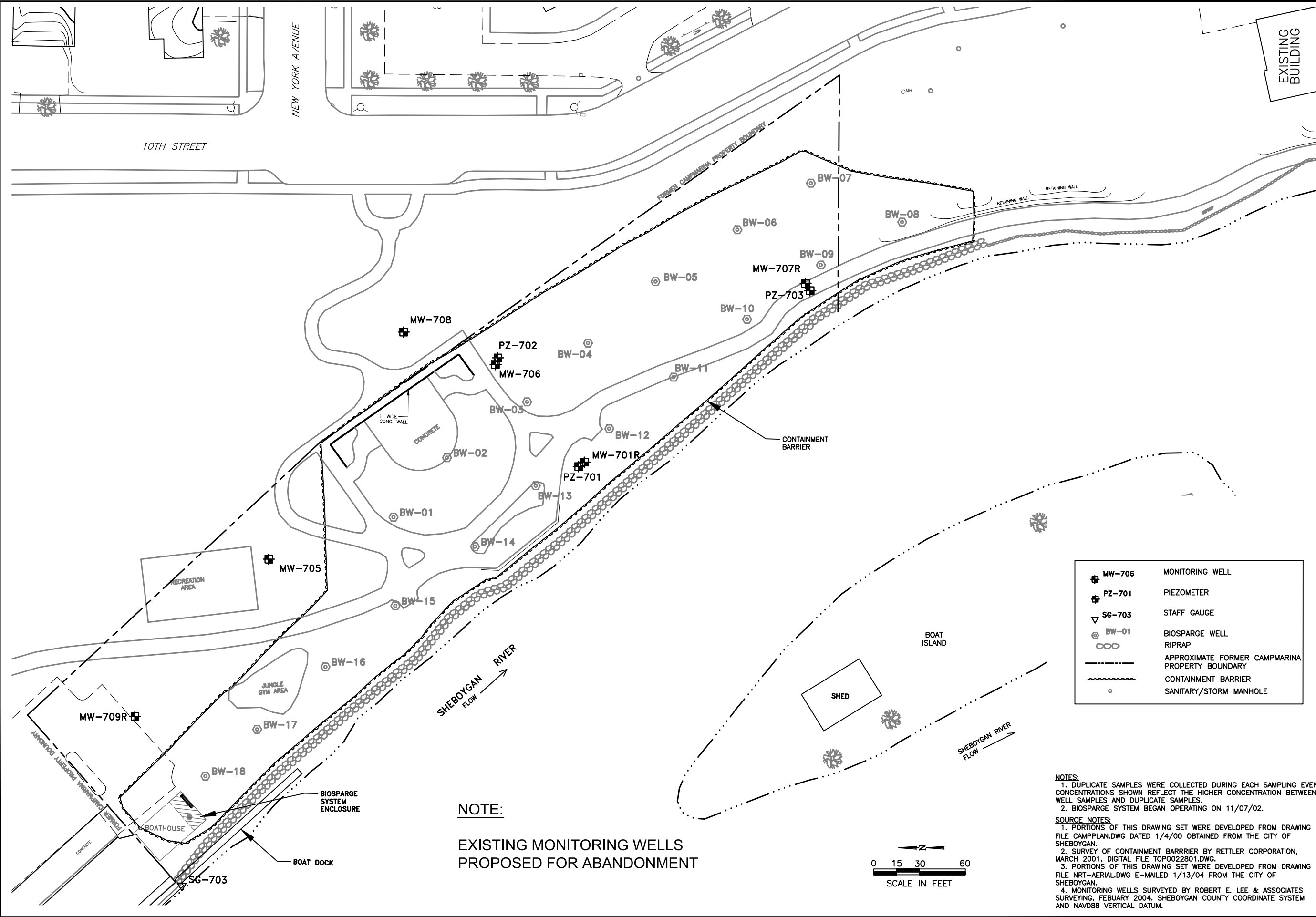
USEPA Actions

- As discussed on the April 30, 2020 conference call, determine a path for deferral of site authority to the State of Wisconsin.

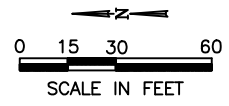
WDNR Actions

Prepare Five Year Review of Upland Operable Unit.

Jan 14, 2020 2:17pm PLOTTED BY: CAMRSEAG SAVED BY: ndraskovitch
 Y: ACADData\Projects\13\1313\B\1313-B-3.d-Monitoring Wells.dwg Layout1
 IMAGES: Y: ACADData\Projects\13\1313\B\1313-B-3.d-Monitoring Wells.dwg
 REFPS:



NOTE:
 EXISTING MONITORING WELLS
 PROPOSED FOR ABANDONMENT



	MW-706	MONITORING WELL
	PZ-701	PIEZOMETER
	SG-703	STAFF GAUGE
	BW-01	BIOSPARGE WELL
		RIPRAP
		APPROXIMATE FORMER CAMPMARINA PROPERTY BOUNDARY
		CONTAINMENT BARRIER
		SANITARY/STORM MANHOLE


NOTES:
 1. DUPLICATE SAMPLES WERE COLLECTED DURING EACH SAMPLING EVENT. CONCENTRATIONS SHOWN REFLECT THE HIGHER CONCENTRATION BETWEEN WELL SAMPLES AND DUPLICATE SAMPLES.
 2. BIOSPARGE SYSTEM BEGAN OPERATING ON 11/07/02.

SOURCE NOTES:
 1. PORTIONS OF THIS DRAWING SET WERE DEVELOPED FROM DRAWING FILE CAMPPLAN.DWG DATED 1/4/00 OBTAINED FROM THE CITY OF SHEBOYGAN.
 2. SURVEY OF CONTAINMENT BARRRIER BY RETTLER CORPORATION, MARCH 2001, DIGITAL FILE TOP0022801.DWG.
 3. PORTIONS OF THIS DRAWING SET WERE DEVELOPED FROM DRAWING FILE NRT-AERIAL.DWG E-MAILED 1/13/04 FROM THE CITY OF SHEBOYGAN.
 4. MONITORING WELLS SURVEYED BY ROBERT E. LEE & ASSOCIATES SURVEYING, FEBRUARY 2004. SHEBOYGAN COUNTY COORDINATE SYSTEM AND NAVD88 VERTICAL DATUM.

DRAWN BY:	NWD	DATE:	04/09/13
CHECKED BY:	JJW	DATE:	04/09/13
APPROVED BY:	JMK	DATE:	05/17/13
DRAWING NO:		1313-B-3.d-Monitoring Wells	
REFERENCE: SEE INFO BLOCK			

MONITORING WELLS

BRRTS #02-60-000095
 CAMP MARINA MANUFACTURED GAS PLANT
 SHEBOYGAN, WISCONSIN



PROJECT NO.
67971

FIGURE NO.
1

Table 1. June 2023 Groundwater Analytical Results

June 2023 Monthly Progress Report
 Wisconsin Public Service Corporation
 Former Manufactured Gas Plant Site - Campmarina
 732 Water Street, Sheboygan, Wisconsin
 BRRTS#: 026000095 | FID#: 460134950 | USEPA#: WIN000510058

9-digit Code	Sample Location	Sample Date	PAH	PAH	PAH	PAH	PAH	PAH	PAH	PAH	PAH	PAH	PAH	PAH	PAH	PAH	PAH	PAH	PAH	BTEX	BTEX	BTEX	BTEX	
			1-Methylnaphthalene	2-Methylnaphthalene	Acenaphthene	Acenaphthylene	Anthracene	Benzo(a)anthracene	Benzo(a)pyrene	Benzo(b)fluoranthene	Benzo(g,h,i)perylene	Benzo(k)fluoranthene	Chrysene	Dibenz(a,h)anthracene	Fluoranthene	Fluorene	Indeno(1,2,3-cd)pyrene	Naphthalene	Phenanthrene	Pyrene	Benzene	Ethylbenzene	Toluene	Xylenes, Total
Reporting Units:			µg/L	µg/L	µg/L	µg/L	µg/L	µg/L	µg/L	µg/L	µg/L	µg/L	µg/L	µg/L	µg/L	µg/L	µg/L	µg/L	µg/L	µg/L	µg/L	µg/L	µg/L	
Tap Water RSL:			1.1	36	530	530	1,800	0.03	0.025	0.25	120	2.5	25	0.025	800	290	0.25	0.12	1,800	120	0.46	1.5	1,100	190
WI Groundwater SL:			NS	NS	NS	NS	3,000	NS	0.2	0.2	NS	NS	0.2	NS	400	400	NS	100	3,000	250	5	700	800	2,000
WI Groundwater PAL:			NS	NS	NS	NS	600	NS	0.02	0.02	NS	NS	0.02	NS	80	80	NS	10	NS	50	0.5	140	160	400
062823005/062823006 (N)	MW-701R	6/28/2023	148	125	103	2.0 J	8.0	1.4 J	0.97 U	0.70 U	1.8 U	1.7 U	1.3 J	1.4 U	4.7	24.1	1.2 U	898	43.2	7.6	3,740	288	13.1 J	146
062823009	MW-706	6/28/2023	188	119	17.1	98.9	4.6 J	1.6 U	1.5 U	1.1 U	2.8 U	2.7 U	1.5 U	2.2 U	3.2 U	27.3	1.9 U	1,730	29.2	3.6 J	2,690	285	962	448
062823003	MW-707R	6/28/2023	89.1	3.7	30.2	1.3	1.4	0.16 U	0.15 U	0.11 U	0.28 U	0.26 U	0.15 U	0.21 U	0.74	10.4	0.18 U	162	8.3	1.0	2,490	1,890	19.2 J	425
062823002	MW-708	6/28/2023	0.018 U	0.014 U	0.014 U	0.013 U	0.019 U	0.014 U	0.013 U	0.0092 U	0.024 U	0.023 U	0.013 U	0.018 U	0.026 U	0.024 U	0.016 U	0.020 U	0.026 U	0.023 U	0.30 U	0.33 U	0.29 U	1.0 U
062823001	MW-709R	6/28/2023	0.018 J	0.018 J	0.017 J	0.013 U	0.019 U	0.014 U	0.013 U	0.0093 U	0.024 U	0.023 U	0.013 U	0.018 U	0.027 U	0.024 U	0.016 U	0.15	0.026 U	0.023 U	0.30 U	0.33 U	0.29 U	1.0 U
062823007	PZ-701	6/28/2023	0.030 J	0.027 J	0.052	0.019 J	0.027 J	0.014 U	0.013 U	0.0091 U	0.023 U	0.022 U	0.013 U	0.018 U	0.026 U	0.024 U	0.016 U	0.078	0.026 U	0.023 U	0.30 U	0.33 U	0.29 U	1.0 U
062823008	PZ-702	6/28/2023	0.018 U	0.023 J	0.014 U	0.013 U	0.019 U	0.014 U	0.013 U	0.0092 U	0.024 U	0.023 U	0.013 U	0.018 U	0.026 U	0.024 U	0.016 U	0.020 U	0.026 U	0.023 U	0.30 U	0.33 U	0.29 U	1.0 U
062823004	PZ-703	6/28/2023	0.022 J	0.014 U	0.058	0.026 J	0.018 U	0.013 U	0.012 U	0.0089 U	0.023 U	0.022 U	0.012 U	0.017 U	0.026 U	0.024 J	0.015 U	0.11	0.025 U	0.022 U	253	113	7.7	43.4
Total Number of Samples Analyzed:			8	8	8	8	8	8	8	8	8	8	8	8	8	8	8	8	8	8	8	8	8	8
Number of Detections:			6	6	6	5	4	1	0	0	0	0	1	0	2	4	0	6	3	3	4	4	4	4
Min:			0.018	0.018	0.017	0.019	0.027	1.4	NA	NA	NA	NA	1.3	NA	0.74	0.024	NA	0.078	8.3	1	253	113	7.7	43.4
Max:			188	125	103	98.9	8	1.4	NA	NA	NA	NA	1.3	NA	4.7	27.3	NA	1,730	43.2	7.6	3,740	1,890	962	448
Tap Water RSL:			1.1	36	530	530	1,800	0.03	0.025	0.25	120	2.5	25	0.025	800	290	0.25	0.12	1,800	120	0.46	1.5	1,100	190
Number of Samples that Exceed Tap Water RSL:			3	2	0	0	0	1	0	0	0	0	0	0	0	0	0	4	0	0	4	4	0	2
Groundwater SL:			NS	NS	NS	NS	3,000	NS	0.2	0.2	NS	NS	0.2	NS	400	400	NS	100	3,000	250	5	700	800	2,000
Number of Samples that Exceed Groundwater SL:			0	0	0	0	0	0	0	0	0	0	1	0	0	0	0	3	0	0	4	1	1	0
WI Groundwater PAL:			NS	NS	NS	NS	600	NS	0.02	0.02	NS	NS	0.02	NS	80	80	NS	10	NS	50	0.5	140	160	400
Number of Samples that Exceed WI Groundwater PAL:			0	0	0	0	0	0	0	0	0	0	1	0	0	0	0	3	0	0	4	3	1	2

Sorted by sample location

Analyte concentration attains or exceeds the standard/screening level for:

<i>Italic</i>	exceeds the Tap Water RSL
Bold	exceeds the Groundwater SL
<u>Underlined</u>	attains or exceeds the WI Groundwater PAL
Pink Highlighting	Groundwater SL exceedance; results only attaining/exceeding the PAL and/or Tap Water criteria are not highlighted.
Yellow Highlighting	analyte exceedance in statistics for one or more samples

Field parameters were analyzed at time of sampling using an InSitu Aquatroll multiparameter sonde.
 Lab comments, additional data qualifiers and definitions can be found in associated laboratory reports.

Screening Levels and Standards:

Screening Levels used on this table were presented in the Multi-Site Risk Assessment Framework (RAF) Addendum Revision 6, issued in August 2017. Since that time, eleven revisions of the RSLs have been published by EPA through November 2022. The RSLs necessary for the MGP-related constituents evaluated in this table are up to date with the most recent revision.

Results & Flags:

- J = Estimated Concentration
- U = Concentration was not detected above the reported limit
- NA = Not Applicable

Acronyms:

- (N) = Normalized sample locations created from combining parent and field duplicate samples following EPA protocol
- µg/L = micrograms per liter
- µS/cm = microsiemens per centimeter (aka micromhos per centimeter)
- BRRTS = Bureau for Remediation and Redevelopment Tracking System
- BTEX = Benzene, Toluene, Ethylbenzene and Xylene
- Deg C = degrees Celsius
- EPA = Environmental Protection Agency
- MCL = Maximum Contaminant Level
- mg/L = milligrams per liter
- MGP = Manufactured Gas Plant
- NO2 + NO3 = nitrite plus nitrate
- NS = No Screening Level/No Standard
- NTU = Nephelometric Turbidity Unit
- PAH = Polycyclic Aromatic Hydrocarbon
- PAL = Preventive Action Limit
- RAF = Risk Assessment Framework
- RSL = Regional Screening Level
- s.u. = standard units
- SL = Screening Level
- USEPA = United States Environmental Protection Agency
- WI = Wisconsin

Table 1. June 2023 Groundwater Analytical Results

June 2023 Monthly Progress Report
 Wisconsin Public Service Corporation
 Former Manufactured Gas Plant Site - Campmarina
 732 Water Street, Sheboygan, Wisconsin
 BRRTS#: 026000095 | FID#: 460134950 | USEPA#: WIN000510058

9-digit Code	Sample Location	Sample Date	Inorganic		Organic		Field		Field		Field		Field		Field	
			Nitrogen, NO ₂ + NO ₃ , Total	Sulfate, Total	Methane	Dissolved oxygen	Groundwater, depth to	Oxidation Reduction Potential	pH, Field	Specific Conductance, Field	Temperature, Water	Turbidity, Quantitative				
Reporting Units:			µg/L	µg/L	µg/L	mg/L	feet	millivolts	s.u.	µS/cm	Deg C	NTUs				
			Result	Flag	Result	Flag	Result	Flag	Result	Flag	Result	Flag	Result	Flag		
Tap Water RSL:			NS	NS	NS	NS	NS	NS	NS	NS	NS	NS				
WI Groundwater SL:			NS	NS	NS	NS	NS	NS	NS	NS	NS	NS				
WI Groundwater PAL:			2,000	125,000	NS	NS	NS	NS	NS	NS	NS	NS				
062823005/062823006 (N)	MW-701R	6/28/2023	59 U	2,200 U	7,760	0.14	5.45	-137.6	7.71	2192.5	15.43	54.36				
062823009	MW-706	6/28/2023	59 U	95,400	18.4	--	6.45	--	--	--	--	--				
062823003	MW-707R	6/28/2023	59 U	27,100	5,210	0.16	4.07	-174.0	8.02	1474.8	14.29	0.00				
062823002	MW-708	6/28/2023	59 U	58,800	0.58 U	0.47	10.44	-127.6	7.69	4,481	14.40	0.00				
062823001	MW-709R	6/28/2023	59 U	3,800 J	1,480	0.17	4.60	-191.5	7.63	1,709	13.62	0.00				
062823007	PZ-701	6/28/2023	59 U	71,700	158	0.27	5.19	-152.0	7.55	859.4	13.44	0.70				
062823008	PZ-702	6/28/2023	85 J	1,800 J	0.58 U	2.97	6.27	-130.1	7.51	189,700	16.36	0.00				
062823004	PZ-703	6/28/2023	59 U	440 U	799	0.24	4.51	-194.0	7.87	509.3	15.27	0.00				

Total Number of Samples Analyzed:	8	8	8	7	8	7	7	7	7	7	7
Number of Detections:	1	6	6	7	8	7	7	7	7	7	7
Min:	85	1,800	18.4	0.14	4.07	-194	7.51	509.3	13.44	0	0
Max:	85	95,400	7,760	2.97	10.44	-130.1	8.02	2,193	16.36	54.36	0
Tap Water RSL:	NS	NS	NS	NS	NS	NS	NS	NS	NS	NS	NS
Number of Samples that Exceed Tap Water RSL:	0	0	0	0	0	0	0	0	0	0	0
Groundwater SL:	NS	NS	NS	NS	NS	NS	NS	NS	NS	NS	NS
Number of Samples that Exceed Groundwater SL:	0	0	0	0	0	0	0	0	0	0	0
WI Groundwater PAL:	2,000	125,000	NS	NS	NS	NS	NS	NS	NS	NS	NS
Number of Samples that Exceed WI Groundwater PAL:	0	0	0	0	0	0	0	0	0	0	0

[O:LDH 7/25/23,C:MGP 7/31/23,U:LDH 8/1/23]

Sorted by sample location

Analyte concentration attains or exceeds the standard/screening level for:

<i>Italic</i>	exceeds the Tap Water RSL
Bold	exceeds the Groundwater SL
<u>Underlined</u>	attains or exceeds the WI Groundwater PAL
Pink Highlighting	Groundwater SL exceedance; results only attaining/exceeding the PAL and/or Tap Water criteria are not highlighted.
Yellow Highlighting	analyte exceedance in statistics for one or more samples

Field parameters were analyzed at time of sampling using an InSitu Aquatroll multiparameter sonde.
 Lab comments, additional data qualifiers and definitions can be found in associated laboratory reports.

Screening Levels and Standards:

Screening Levels used on this table were presented in the Multi-Site Risk Assessment Framework (RAF) Addendum Revision 6, issued in August 2017. Since that time, eleven revisions of the RSLs have been published by EPA through November 2022. The RSLs necessary for the MGP-related constituents evaluated in this table are up to date with the most recent revision.

Results & Flags:

- J = Estimated Concentration
- U = Concentration was not detected above the reported limit
- NA = Not Applicable

Acronyms:

- (N) = Normalized sample locations created from combining parent and field duplicate samples following EPA protocol
- µg/L = micrograms per liter
- µS/cm = microsiemens per centimeter (aka micromhos per centimeter)
- BRRTS = Bureau for Remediation and Redevelopment Tracking System
- BTEX = Benzene, Toluene, Ethylbenzene and Xylene
- Deg C = degrees Celsius
- EPA = Environmental Protection Agency
- MCL = Maximum Contaminant Level
- mg/L = milligrams per liter
- MGP = Manufactured Gas Plant
- NO₂ + NO₃ = nitrite plus nitrate
- NS = No Screening Level/No Standard
- NTU = Nephelometric Turbidity Unit
- PAH = Polycyclic Aromatic Hydrocarbon
- PAL = Preventive Action Limit
- RAF = Risk Assessment Framework
- RSL = Regional Screening Level
- s.u. = standard units
- SL = Screening Level
- USEPA = United States Environmental Protection Agency
- WI = Wisconsin