



Wisconsin Public Service Corporation  
P.O. Box 19001  
Green Bay, WI 54307-9001  
www.wisconsinpublicservice.com

February 19, 2024

Ms. Anna Nguyen  
Project Manager  
United States Environmental Protection Agency  
77 W. Jackson Boulevard (SR-6J)  
Chicago, Illinois 60604-3590

**RE: January 2024 Monthly Progress Report  
Campmarina Former Manufactured Gas Plant  
Sheboygan, Wisconsin  
Wisconsin Public Services Corporation  
CERCLA Docket No. V-W-07-C-862, CERCLIS ID – WIN000510058**

Dear Ms. Nguyen:

Wisconsin Public Services Corporation (WPSC) is providing this monthly progress report for the WPSC Former *Campmarina Manufactured Gas Plant (MGP)* Site.

**1) PROGRESS MADE DURING THE PAST MONTH**

- Prepared and submitted December 2023 Monthly Progress Report to United States Environmental Protection Agency (USEPA) by January 26, 2024.

**2) ANALYTICAL AND OTHER TESTING RESULTS RECEIVED**

- Groundwater analytical results summary table from the December 27, 2023 sampling event and a site map have been included with this monthly progress report.

**3) PROJECTED WORK**

**WPSC Actions**

- Submit monthly progress report to USEPA by the 26th of the month.

**USEPA Actions**

- As discussed on the April 30, 2020 conference call, determine a path for deferral of site authority to the State of Wisconsin.

**WDNR Actions**

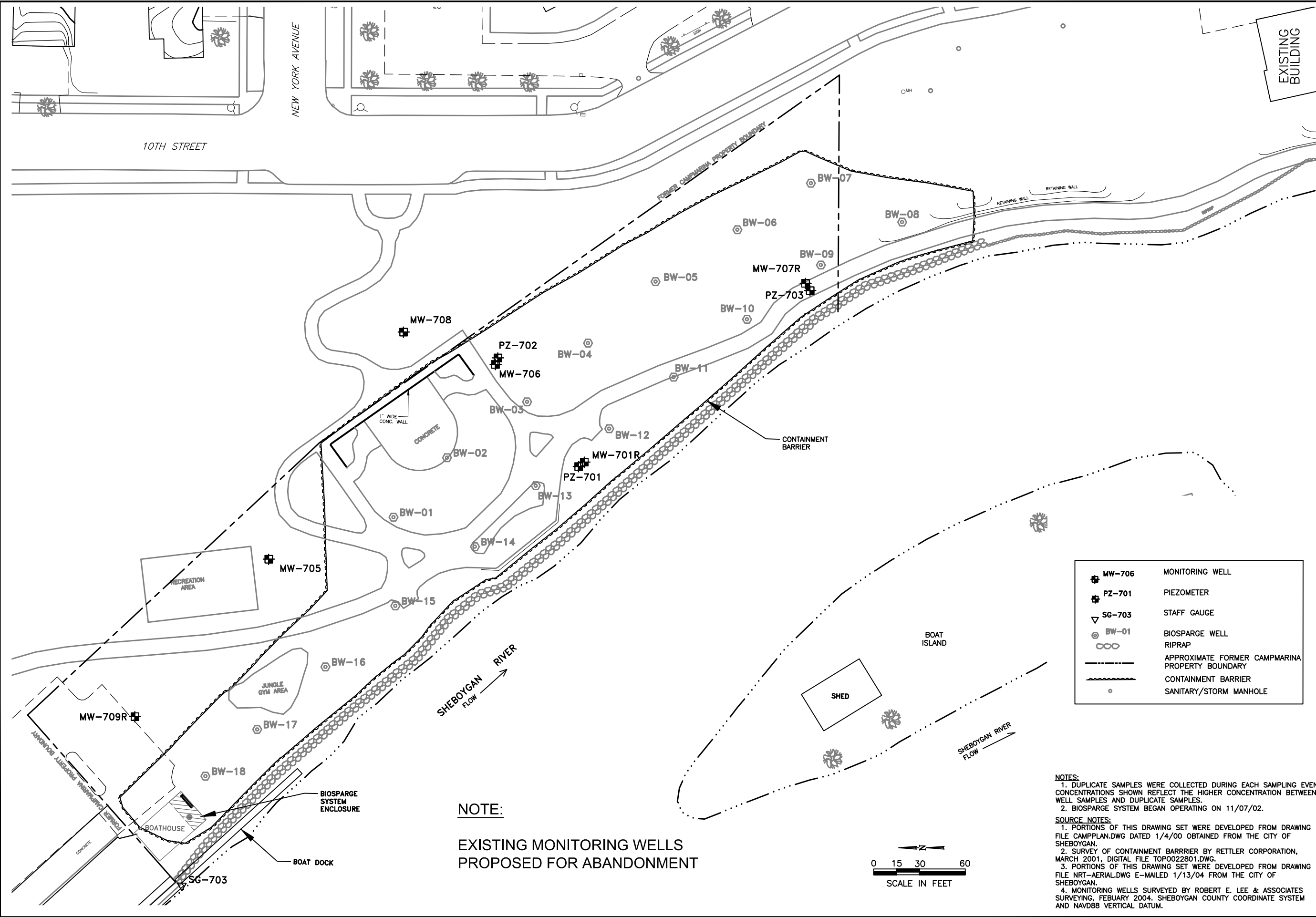
- Work with USEPA to determine a path for deferral of the site back to the State of Wisconsin.

**4) PROBLEMS OR POTENTIAL PROBLEMS ENCOUNTERED**

- None

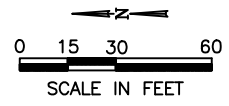


Jan 14, 2020 2:17pm PLOTTED BY: CAMWSEAG SAVED BY: ndraskovitch  
 Y:\ACADData\Projects\131313\1313-B-3.d-Monitoring Wells.dwg Layout1  
 IMAGES: Y:\ACADData\Projects\131313\1313-B-3.d-Monitoring Wells.dwg  
 ARCS:



	MW-706	MONITORING WELL
	PZ-701	PIEZOMETER
	SG-703	STAFF GAUGE
	BW-01	BIOSPARGE WELL
		RIPRAP
		APPROXIMATE FORMER CAMPMARINA PROPERTY BOUNDARY
		CONTAINMENT BARRIER
		SANITARY/STORM MANHOLE

**NOTE:**  
 EXISTING MONITORING WELLS  
 PROPOSED FOR ABANDONMENT



**NOTES:**  
 1. DUPLICATE SAMPLES WERE COLLECTED DURING EACH SAMPLING EVENT. CONCENTRATIONS SHOWN REFLECT THE HIGHER CONCENTRATION BETWEEN WELL SAMPLES AND DUPLICATE SAMPLES.  
 2. BIOSPARGE SYSTEM BEGAN OPERATING ON 11/07/02.  
**SOURCE NOTES:**  
 1. PORTIONS OF THIS DRAWING SET WERE DEVELOPED FROM DRAWING FILE CAMPPLAN.DWG DATED 1/4/00 OBTAINED FROM THE CITY OF SHEBOYGAN.  
 2. SURVEY OF CONTAINMENT BARRRIER BY RETTLER CORPORATION, MARCH 2001, DIGITAL FILE TOP0022801.DWG.  
 3. PORTIONS OF THIS DRAWING SET WERE DEVELOPED FROM DRAWING FILE NRT-AERIAL.DWG E-MAILED 1/13/04 FROM THE CITY OF SHEBOYGAN.  
 4. MONITORING WELLS SURVEYED BY ROBERT E. LEE & ASSOCIATES SURVEYING, FEBRUARY 2004. SHEBOYGAN COUNTY COORDINATE SYSTEM AND NAVD88 VERTICAL DATUM.

DRAWN BY:	NWD	DATE:	04/09/13
CHECKED BY:	JJW	DATE:	04/09/13
APPROVED BY:	JMK	DATE:	05/17/13
DRAWING NO: 1313-8-B.3.d-Monitoring Wells			
REFERENCE: SEE INFO BLOCK			

**MONITORING WELLS**

BRRTS #02-60-000095  
 CAMP MARINA MANUFACTURED GAS PLANT  
 SHEBOYGAN, WISCONSIN

PROJECT NO. 67971
FIGURE NO. 1

**Table 1. December 2023 Groundwater Analytical Results**

December 2023 Monthly Progress Report  
 Wisconsin Public Service Corporation  
 Former Manufactured Gas Plant Site - Campmarina  
 732 Water Street, Sheboygan, Wisconsin  
 BRRTS#: 0260000095 | FID#: 460134950 | USEPA#: WIN000510058

9-digit Code	Sample Location	Sample Date	BTEX	BTEX	BTEX	BTEX	PAH	PAH	PAH	PAH	PAH	PAH	PAH	PAH	PAH	PAH	PAH	PAH	PAH	PAH	PAH	PAH																									
			Benzene	Ethylbenzene	Toluene	Xylenes, Total	1-Methylnaphthalene	2-Methylnaphthalene	Acenaphthene	Acenaphthylene	Anthracene	Benzo(a)anthracene	Benzo(a)pyrene	Benzo(b)fluoranthene	Benzo(g,h,i)perylene	Benzo(k)fluoranthene	Chrysene	Dibenz(a,h)anthracene	Fluoranthene	Fluorene	Indeno(1,2,3-cd)pyrene	Naphthalene	Phenanthrene	Pyrene																							
Reporting Units:			µg/L	µg/L	µg/L	µg/L	µg/L	µg/L	µg/L	µg/L	µg/L	µg/L	µg/L	µg/L	µg/L	µg/L	µg/L	µg/L	µg/L	µg/L	µg/L	µg/L																									
			Result	Flag	Result	Flag	Result	Flag	Result	Flag	Result	Flag	Result	Flag	Result	Flag	Result	Flag	Result	Flag	Result	Flag																									
Tap Water RSL:			0.46	1.5	1,100	190	1.1	36	530	530	1,800	0.03	0.025	0.25	120	2.5	25	0.025	800	290	0.25	0.12	1,800	120																							
WI Groundwater SL:			5	700	800	2,000	NS	NS	NS	NS	3,000	NS	0.2	0.2	NS	NS	0.2	NS	400	400	NS	100	NS	250																							
WI Groundwater PAL:			0.5	140	160	400	NS	NS	NS	NS	600	NS	0.02	0.02	NS	NS	0.02	NS	80	80	NS	10	NS	50																							
122723006/122723007 (N)	MW-701R	12/27/23	<b>3,480</b>	<b>342</b>	13.4	J	164	232	210	139	2.0	J	13.0	1.7	J	1.3	U	0.97	U	2.5	U	2.4	U	<b>1.5</b>	J	1.9	U	7.1		34.8	1.6	U	<b>1,440</b>	66.2	8.4												
122723005	MW-706	12/27/23	<b>5,220</b>	<b>337</b>	<b>774</b>		<b>411</b>	397	143	40.0	169	10.2	J	2.9	U	2.7	U	1.9	U	5.0	U	4.7	U	2.7	U	3.8	U	5.6	U	54.4	3.3	U	<b>2,650</b>	56.3	6.3	J											
122723009	MW-707R	12/27/23	<b>1,980</b>	<b>1,870</b>	21.9		<b>420</b>	144	6.6	46.6	1.6		3.8	0.38	U	0.36	U	0.26	U	0.66	U	0.63	U	0.35	U	0.50	U	1.8		19.8	0.44	U	<b>330</b>	16.2	1.9												
122723003	MW-708	12/27/23	0.30	U	0.33	U	0.29	U	1.0	U	0.020	U	0.015	U	0.015	U	0.014	U	0.020	U	0.015	U	0.014	U	0.010	U	0.026	U	0.025	U	0.014	U	0.020	U	0.029	U	0.026	U	0.017	U	0.031	J	0.028	U	0.025	U	
122723001	MW-709R	12/27/23	0.30	U	0.33	U	0.29	U	1.0	U	0.020	U	0.017	J	0.015	U	0.014	U	0.020	U	0.015	U	0.014	U	0.017	J	0.026	U	0.025	U	0.014	U	0.022	J	0.029	U	0.026	U	0.020	J	0.042	J	0.028	U	0.025	U	
122723008	PZ-701	12/27/23	<b>9.9</b>		0.80	J	0.29	U	1.2	J	0.53		0.45		0.32		0.025	J	0.038	J	0.015	U	0.014	U	0.010	U	0.026	U	0.025	U	0.014	U	0.020	U	0.029	U	0.062		0.017	U	<b>3.1</b>		0.062		0.025	U	
122723004	PZ-702	12/27/23	0.30	U	0.33	U	0.29	U	1.0	U	0.018	U	0.014	U	0.014	U	0.013	U	0.019	U	0.014	U	0.013	U	0.0094	U	0.024	U	0.023	U	0.013	U	0.018	U	0.027	U	0.024	U	0.016	U	0.044	J	0.026	U	0.023	U	
122723010	PZ-703	12/27/23	<b>166</b>		52.2		8.6		50.0		0.78		0.039	J	0.47		0.16		0.031	J	0.014	U	0.013	U	0.0095	U	0.024	U	0.023	U	0.013	U	0.019	U	0.027	U	0.28		0.016	U	<b>0.19</b>		0.17		0.024	U	
Total Number of Samples Analyzed:			9	9	9	9	9	9	9	9	9	9	9	9	9	9	9	9	9	9	9	9	9	9	9	9	9	9	9	9	9	9	9	9	9	9	9	9	9	9	9	9	9	9	9	9	
Number of Detections:			5	5	5	5	5	6	5	5	6	1	0	2	0	0	1	1	2	5	1	8	5	3																							
Min:			9.9	0.8	2.7	1.2	0.53	0.017	0.32	0.025	0.031	1.7	NA	0.013	NA	NA	1.5	0.022	1.8	0.062	0.02	0.031	0.062	1.9																							
Max:			5,220	1,870	774	420	397	210	139	169	13	1.7	NA	0.017	NA	NA	1.5	0.022	7.1	54.4	0.02	2,650	66.2	8.4																							
Tap Water RSL:			0.46	1.5	1100	190	1.1	36	530	530	1800	0.03	0.025	0.25	120	2.5	25	0.025	800	290	0.25	0.12	1800	120																							
Number of Samples that Exceed Tap Water RSL:			5	4	0	2	3	2	0	0	0	1	0	0	0	0	0	0	0	0	0	5	0	0																							
WI Groundwater SL:			5	700	800	2000	NS	NS	NS	NS	3000	NS	0.2	0.2	NS	NS	0.2	NS	400	400	NS	100	NS	250																							
Number of Samples that Exceed Groundwater SL:			5	1	0	0	0	0	0	0	0	0	0	0	0	0	1	0	0	0	0	3	0	0																							
WI Groundwater PAL:			0.5	140	160	400	NS	NS	NS	NS	600	NS	0.02	0.02	NS	NS	0.02	NS	80	80	NS	10	NS	50																							
Number of Samples that Exceed WI Groundwater PAL:			5	3	1	2	0	0	0	0	0	0	0	0	0	0	1	0	0	0	0	3	0	0																							

Sorted by sample location

Analyte concentration attains or exceeds the standard/screening level for:

<i>Italic</i>	exceeds the Tap Water RSL
<b>Bold</b>	exceeds the Groundwater SL
<u>Underlined</u>	attains or exceeds the WI Groundwater PAL
<b>Yellow Highlighting</b>	analyte exceedance in statistics for one or more samples

Field parameters were analyzed at time of sampling using an InSitu Aquatroll multiparameter sonde.  
 Lab comments, additional data qualifiers and definitions can be found in associated laboratory reports.

**Screening Levels and Standards:**

Screening Levels used on this table were presented in the Multi-Site Risk Assessment Framework (RAF) Addendum Revision 6, issued in August 2017. Since that time, eleven revisions of the RSLs have been published by EPA through November 2022. The RSLs necessary for the MGP-related constituents evaluated in this table are up to date with the most recent

**Results & Flags:**

- = Analysis not performed
- J = Estimated Concentration
- U = Concentration was not detected above the reported limit
- NA = Not Applicable

**Acronyms:**

- (N) = Normalized sample locations created from combining parent and field duplicate samples following EPA protocol
- µg/L = micrograms per liter
- µS/cm = microsiemens per centimeter (aka micromhos per centimeter)
- BRRTS = Bureau for Remediation and Redevelopment Tracking System
- BTEX = Benzene, Toluene, Ethylbenzene and Xylene
- Deg C = degrees Celsius
- EPA = Environmental Protection Agency
- FID = facility identification number
- MCL = Maximum Contaminant Level
- mg/L = milligrams per liter
- MGP = Manufactured Gas Plant
- NO2 + NO3 = nitrite plus nitrate
- NS = No Screening Level/No Standard
- NTU = Nephelometric Turbidity Unit
- PAH = Polycyclic Aromatic Hydrocarbon
- PAL = Preventive Action Limit
- RSL = Regional Screening Level
- s.u. = standard units
- SL = Screening Level
- USEPA = United States Environmental Protection Agency
- WI = Wisconsin

**Table 1. December 2023 Groundwater Analytical Results**

December 2023 Monthly Progress Report  
 Wisconsin Public Service Corporation  
 Former Manufactured Gas Plant Site - Campmarina  
 732 Water Street, Sheboygan, Wisconsin  
 BRRTS#: 0260000095 | FID#: 460134950 | USEPA#: WIN000510058

9-digit Code	Sample Location	Sample Date	Inorganic		Organic	Field	Field	Field	Field	Field	Field	Field
			Nitrogen, NO2 + NO3, Total	Sulfate, Total	Methane	Dissolved oxygen	Groundwater, depth to	Oxidation Reduction Potential	pH, Field	Specific Conductance, Field	Temperature, Water	Turbidity, Quantitative
Reporting Units:			µg/L	µg/L	µg/L	mg/L	feet	millivolts	s.u.	µS/cm	Deg C	NTUs
			Result Flag	Result Flag	Result Flag	Result Flag	Result Flag	Result Flag	Result Flag	Result Flag	Result Flag	Result Flag
Tap Water RSL:			NS	NS	NS	NS	NS	NS	NS	NS	NS	NS
WI Groundwater SL:			10,000	250,000	NS	NS	NS	NS	NS	NS	NS	NS
WI Groundwater PAL:			2,000	125,000	NS	NS	NS	NS	NS	NS	NS	NS
122723006/122723007 (N)	MW-701R	12/27/23	59 U	2,200 U	7,520	0.07	5.96	-48.3	6.53	2129.2	11.36	102
122723005	MW-706	12/27/23	88 J	14,900	24.3	--	8.14	--	--	--	--	--
122723009	MW-707R	12/27/23	59 U	4,800 J	9,110	0.1	4.28	-81.1	7.19	1430.9	10.29	2.29
122723003	MW-708	12/27/23	59 U	136,000	60.8	0.25	10.6	-55.3	7.13	3980.4	12.02	16.04
122723001	MW-709R	12/27/23	59 U	9,400 J	2,350	0.11	4.64	-93.6	7.23	1761.9	8.6	0
122723008	PZ-701	12/27/23	59 U	38,400	1,440	0.12	5.26	-93.4	7.24	973.7	11.28	0
122723004	PZ-702	12/27/23	59 U	2,200 U	0.58 U	4.24	6.44	-48	7.69	186.5	10.58	0.49
122723010	PZ-703	12/27/23	59 U	2,200 U	1,650	0.31	5.81	-93.5	7.46	506.47	10.11	4.02

Total Number of Samples Analyzed:	9	9	9	8	9	8	8	8	8	8	8
Number of Detections:	2	6	8	8	9	8	8	8	8	8	8
Min:	88	4,800	24.3	0.07	4.28	-93.6	6.53	186.5	8.6	0	0
Max:	450	136,000	9,110	4.24	10.6	-48	7.69	3,980	12.02	102	102
Tap Water RSL:	NS	NS	NS	NS	NS	NS	NS	NS	NS	NS	NS
Number of Samples that Exceed Tap Water RSL:	0	0	0	0	0	0	0	0	0	0	0
WI Groundwater SL:	10000	250000	NS	NS	NS	NS	NS	NS	NS	NS	NS
Number of Samples that Exceed Groundwater SL:	0	0	0	0	0	0	0	0	0	0	0
WI Groundwater PAL:	2000	125000	NS	NS	NS	NS	NS	NS	NS	NS	NS
Number of Samples that Exceed WI Groundwater PAL:	0	1	0	0	0	0	0	0	0	0	0

[O: GKJ 1/29/24, C: EAG 1/31/24]

Sorted by sample location

Analyte concentration attains or exceeds the standard/screening level for:

<i>Italic</i>	exceeds the Tap Water RSL
<b>Bold</b>	exceeds the Groundwater SL
<u>Underlined</u>	attains or exceeds the WI Groundwater PAL
Yellow Highlighting	analyte exceedance in statistics for one or more samples

Field parameters were analyzed at time of sampling using an InSitu Aquatroll multiparameter sonde.  
 Lab comments, additional data qualifiers and definitions can be found in associated laboratory reports.

**Screening Levels and Standards:**

Screening Levels used on this table were presented in the Multi-Site Risk Assessment Framework (RAF) Addendum Revision 6, issued in August 2017. Since that time, eleven revisions of the RSLs have been published by EPA through November 2022. The RSLs necessary for the MGP-related constituents evaluated in this table are up to date with the most recent revision.

**Results & Flags:**

- = Analysis not performed
- J = Estimated Concentration
- U = Concentration was not detected above the reported limit
- NA = Not Applicable

**Acronyms:**

- (N) = Normalized sample locations created from combining parent and field duplicate samples following EPA protocol
- µg/L = micrograms per liter
- µS/cm = microsiemens per centimeter (aka micromhos per centimeter)
- BRRTS = Bureau for Remediation and Redevelopment Tracking System
- BTEX = Benzene, Toluene, Ethylbenzene and Xylene
- Deg C = degrees Celsius
- EPA = Environmental Protection Agency
- FID = facility identification number
- MCL = Maximum Contaminant Level
- mg/L = milligrams per liter
- MGP = Manufactured Gas Plant
- NO2 + NO3 = nitrite plus nitrate
- NS = No Screening Level/No Standard
- NTU = Nephelometric Turbidity Unit
- PAH = Polycyclic Aromatic Hydrocarbon
- PAL = Preventive Action Limit
- RSL = Regional Screening Level
- s.u. = standard units
- SL = Screening Level
- USEPA = United States Environmental Protection Agency
- WI = Wisconsin