



May 7, 2020

WIC-NO-2020-4-00852, 00857, 00858

Bretting Development Corporation
Attention: Paul Bretting
3401 Lake Park Road
Ashland, WI 54806

RE: Wetland Identification Report for Three 5-Acre Project Review Areas, located in the NE1/4 of Section 23, Township 48 North, Range 05 West, Town of Barksdale, Bayfield County

Dear Mr. Bretting:

Governor Evers' Safer at Home order prohibiting all nonessential travel, with some exceptions as clarified and defined in the order has resulted in Department changes to wetland identification reviews. As a result, the Department has conducted a thorough review of all available resources associated with this wetland identification request as further elaborated below.

From April 27 to May 7, 2020, Travis Holte conducted a wetland identification review at the above-mentioned property through a thorough review of the available desktop materials available, and onsite photographs. According to the request form you sent us, the reason for the wetland identification review area was to identify any wetlands located in the area in which you are hoping to bring in and grade topsoil, and as part of a larger remediation effort on the property. Three separate wetland identification service requests created three separate review areas that will be described as the north review area (00857), the middle shed review area (00852), and the southern review area (00858)

Approximate wetland boundaries were identified following 1987 Wetland Delineation Manual and applicable regional supplement guidelines. Wetlands are defined by the 1987 Wetland Delineation Manual as areas that are inundated or saturated by surface or ground water at a frequency and duration sufficient to support, and that under normal circumstances do support, a prevalence of vegetation typically adapted for life in saturated soil conditions. If any wetland areas were detected, their approximate boundaries were sketched onto an aerial photograph (see attached map).

Methods used to detect the presence of wetlands within the project areas involved off-site techniques, including a review of recent aerial photography (Google Earth), historic aerial photography (Earth Explorer), Wisconsin Wetland Inventory (WWI) mapping, pertinent County Soil Survey mapping, and Bayfield County GIS Web Map.

The following is a summary of the off-site review.

- Recent aerial imagery reviews on Google Earth did note distinct wetness signatures or wetland characteristics in the "north" review area. The aerial photographs reviewed with these clear wetland signatures were 2005, 2006, 2011, and 2015 and can be provided if requested. Similar characteristics or wetness signatures were not noted in the other two project review areas.

- Historic aerial imagery was also reviewed from USGS Earth Explorer. Different imagery was reviewed from as far back as 1943 and as recent as 1999. Noted wetland signatures in the “north” project review area was documented similarly in size and location to the Google Earth images.
- The more recent and historic wetland signatures also corresponded to onsite photographs provided to the Department as part of the review. Onsite photographs indicated what looks like a wet meadow wetland likely dominated by *Carex* species and *Calamagrostis canadensis* (Canada bluejoint).
- The WWI has forested, scrub/shrub wetland mapped nearly throughout the “north” project review area, and just the southwestern part of “middle shed” and “south” project review areas. Enclosed within this report is a WWI figure for reference.
- Soils mapped in the project area include the poorly drained and somewhat poorly drained Lerch-Herbster complex, 0 to 3 percent slopes (479A) and the moderately well drained and somewhat poorly drained Portwing-Herbster complex, 0 to 6 percent slopes (480B). Both mapped soils units contain different soil compositions or components that are hydric and not hydric depending on landscape position. Enclosed within this identification report is the soil survey mapping for additional information on the location of the soil type(s) within the project review areas.

Based on the data analyzed for the off-site review from April 27 to May 7, 2020, **one wet meadow wetland is in the northern portion of the “north” project review area (review area 00857). No wetlands were found in the “middle shed” (00852) and “southern” (00858) project review areas.** An approximate sketched wetland boundary figure is enclosed within this report. This wetland boundary corresponds to noted vegetation changes in recent and historical aerial photographs reviewed, and onsite photographs of the project review areas.

The wetland boundaries depicted on the associated field sketch are approximate only and may not be appropriate for design purposes, such as set-back or permit requirements. If wetlands are located on your property, we may recommend that a wetland delineation be conducted on your property by a qualified wetland delineator. Wetlands are regulated by various state, federal, and local units of government. Prior to conducting any activities in or around wetlands, we recommend you contact the appropriate staff from Wisconsin Department of Natural Resources, U.S. Army Corps of Engineers and Bayfield County.

If you have any questions, please contact me at (715) 415-4916 or email Travis.Holte@wisconsin.gov.

Sincerely,



Travis Holte
Wetland Identification Specialist

Enclosures:

Wetland Identification Field Sketch
4-10-1963 Wetland Sketch

2015 Google Earth Image
Onsite Photo 4 ("north" review area wetland vegetation)
WWI Mapping Figure
Soil Survey Mapping

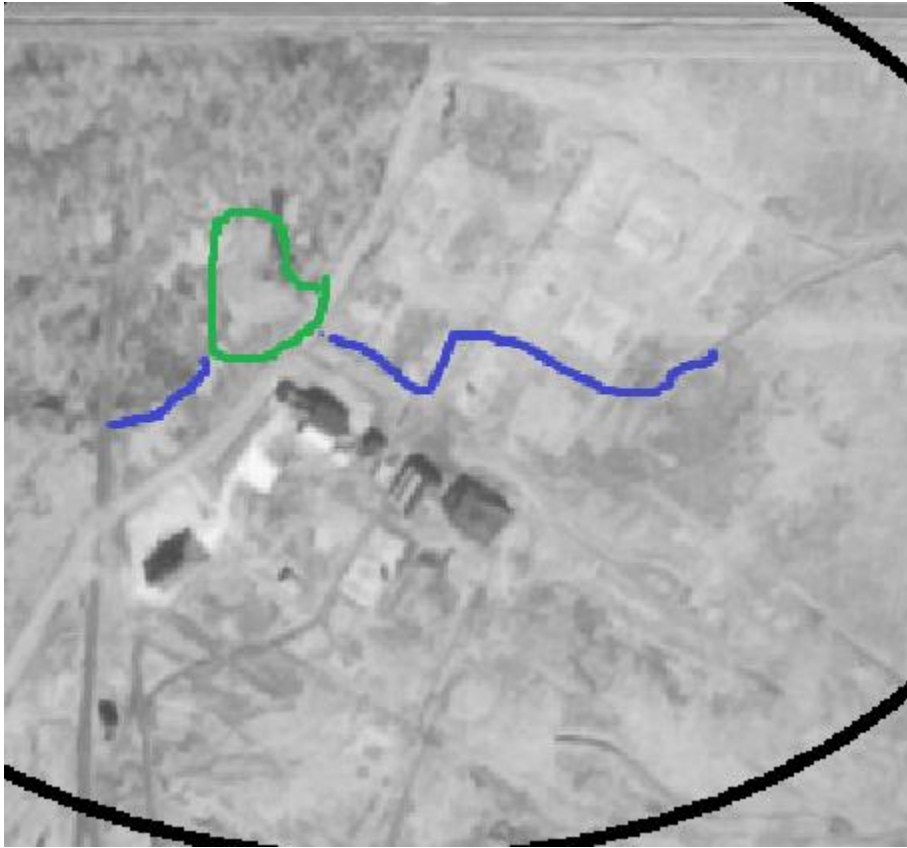
CC (via email):

Bill Sande, Project Manager, U.S. Army Corps of Engineers
Robert Shierman, Bayfield County
Steve LaValley, DNR Water Management Specialist-Wetland Team
Matt Jacobson & Teagan Seneczko, DNR Storm Water Specialists
Philip Richard, DNR Hydrogeologist
Mike Ellenbecker & Doug Coenen, DNR Hazardous Waste Prevention and Management
Chris Saari, Remediation & Redevelopment
Eric Schmidt, AECOM

Field Sketch (Wetland indicated in green and waterway in blue)



4-10-1963 Wetland Sketch



2015 Google Earth Image



Onsite Photo #4 (wetland and waterway)



Soil Survey Mapping



WWI Figure

