

NORTHERN LAKE SERVICE, INC.
 Analytical Laboratory and Environmental Services
 400 North Lake Avenue - Crandon, WI 54520
 Ph: (715)-478-2777 Fax: (715)-478-3060

ANALYTICAL REPORT

W DNR Laboratory ID No. 721026460
 WDATCP Laboratory Certification No. 105-330
 EPA Laboratory ID No. WI00034
 Printed: 12/30/16 Page 1 of 1
 NLS Project: 272401
 NLS Customer: 104168
 Fax: 715 536 1277 Phone: 715 551 9080

Pg 1

Client: Township of Aniwa
 Attn: Warren Hohn
 1201 Lake St
 Merrill, WI 54452

Sampling Done By
 Warren Hohn

Project: Arsenic Cleanup

B-12 NLS ID: 966267

COC: 206600:1 Matrix: GW
 Collected: 10/10/16 17:45 Received: 12/14/16

Parameter	Result	Units	Dilution	LOD	LOQ	Analyzed	Method	Lab
Arsenic, dis. as As by ICP-MS	560	ug/L	1	0.50*	1.0*	12/27/16	EPA 200.8, Rev 5.4	721026460

B-13 D NLS ID: 966268

B-13 R

COC: 206600:2 Matrix: GW
 Collected: 10/10/16 18:01 Received: 12/14/16

Parameter	Result	Units	Dilution	LOD	LOQ	Analyzed	Method	Lab
Arsenic, dis. as As by ICP-MS	2900	ug/L	1	0.50*	1.0*	12/27/16	EPA 200.8, Rev 5.4	721026460

B-21 NLS ID: 966269

COC: 206600:3 Matrix: GW
 Collected: 10/29/16 14:30 Received: 12/14/16

Parameter	Result	Units	Dilution	LOD	LOQ	Analyzed	Method	Lab
Arsenic, dis. as As by ICP-MS	5.2	ug/L	1	0.50*	1.0*	12/27/16	EPA 200.8, Rev 5.4	721026460

B-12 NLS ID: 966270

COC: 206600:4 Matrix: GW
 Collected: 10/29/16 14:45 Received: 12/14/16

Parameter	Result	Units	Dilution	LOD	LOQ	Analyzed	Method	Lab
Arsenic, dis. as As by ICP-MS	1000	ug/L	1	0.50*	1.0*	12/27/16	EPA 200.8, Rev 5.4	721026460

B-13 R NLS ID: 966271

COC: 206600:5 Matrix: GW
 Collected: 10/29/16 15:15 Received: 12/14/16

Parameter	Result	Units	Dilution	LOD	LOQ	Analyzed	Method	Lab
Arsenic, dis. as As by ICP-MS	2700	ug/L	1	0.50*	1.0*	12/27/16	EPA 200.8, Rev 5.4	721026460

Timm NLS ID: 966272

COC: 206600:6 Matrix: DW
 Collected: 10/29/16 14:50 Received: 12/14/16

Parameter	Result	Units	Dilution	LOD	LOQ/MCL	Analyzed	Method	Lab
Arsenic, tot. recoverable as As by ICP-MS	1.4	ug/L	1	0.50*	1.0 / 10*	12/15/16	EPA 200.8, Rev 5.4	721026460

Values in brackets represent results greater than or equal to the LOD but less than the LOQ and are within a region of "Less-Certain Quantitation". Results greater than or equal to the LOQ are considered to be in the region of "Certain Quantitation". LOD and/or LOQ tagged with an asterisk(*) are considered Reporting Limits. All LOD/LOQs adjusted to reflect dilution and/or solids content.

ND = Not Detected (< LOD) LOD = Limit of Detection LOQ = Limit of Quantitation NA = Not Applicable
 DWB = Dry Weight Basis %DWB = (mg/kg DWB) / 10000 1000 ug/L = 1 mg/L
 MCL = Maximum Contaminant Levels for Drinking Water Samples. Shaded results indicate >MCL.

Reviewed by: *[Signature]*
 R. T. Krueger
 President

Date	Well #	Top of Csg	GW Elev.	Depth To Water	Date	GW Elev.	Depth to Water
10/10/16	B-12	97.64'	85.56	12.08	10/29/16	85.03'	12.61'
	B-13R	99.28'	85.93	13.35		85.30	13.98'
	B-21	93.67'	-	-		84.67	9.00'

Town of Anusa Well Monitoring Pg 2

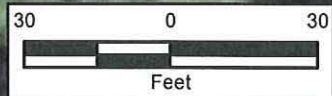
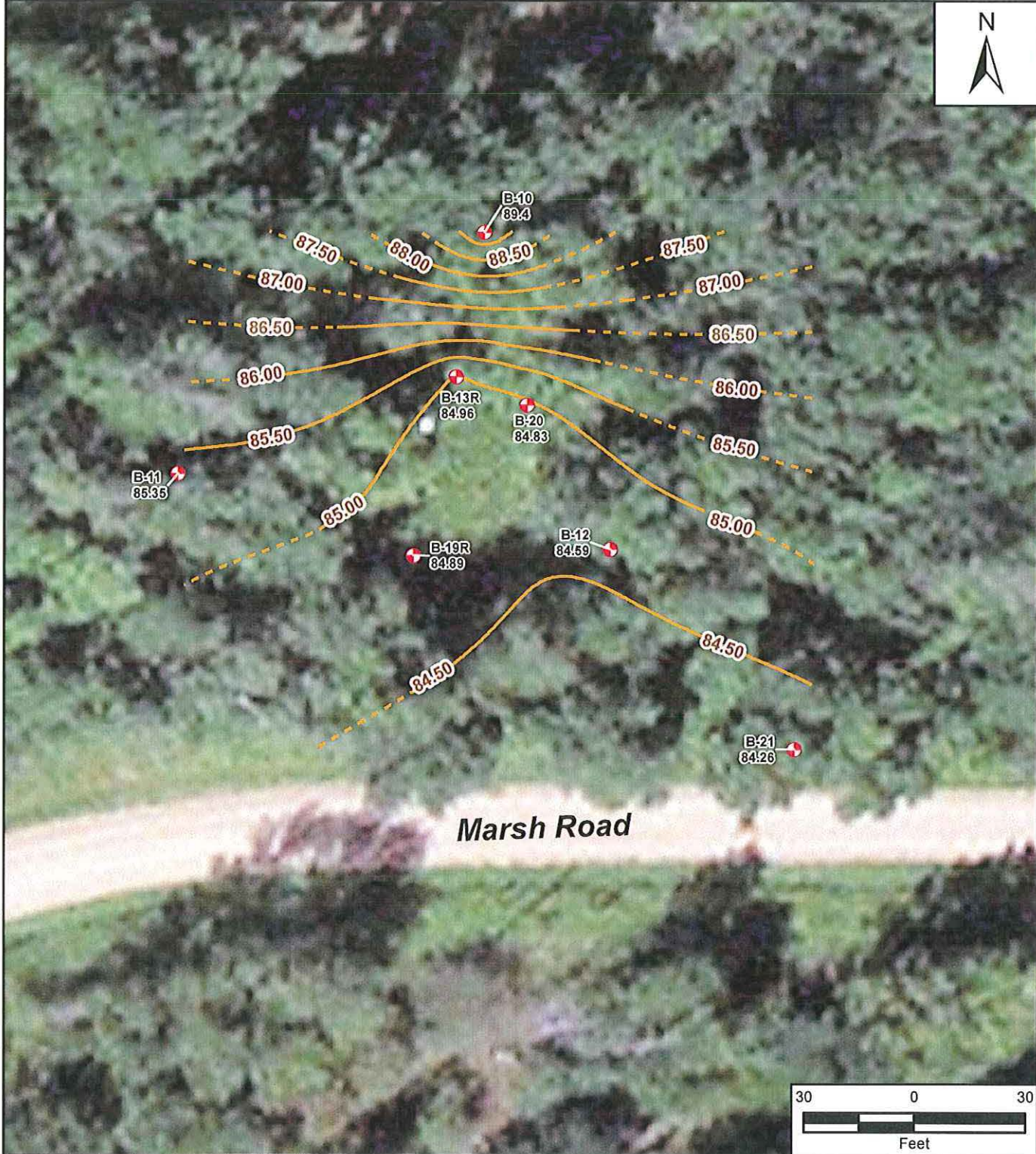
Date 10/10/16

MW	Temp °C	pH	Spec. Cond. (mS/cm)	Gal Purged
B-12	10.6	7.09	0.525	2.5
B-13 R	10.8	7.10	0.491	3.0

Date 10/29/16

MW	Temp °C	pH	Spec Cond (mS/cm)	Gal Purged
B-12	11.4	7.12	0.511	2.5
B-13 R	11.6	7.18	0.549	3
B-21	14.4	6.89	0.399	2

Sampled by Warren Hohn
Warren Hohn



File Path: G:\GIS\026-START\W\Wisconsin\Aniwa Arsenic\mxd\Fig5-PotentiometricSurface_0915.mxd



- Legend**
- + Monitoring Well Location
 - Groundwater Elevation Contour
 - - - Inferred Groundwater Elevation Contour
 - 87.5 Groundwater Elevation

Aniwa Arsenic Site
Aniwa, Shawano County, Wisconsin

Figure 5
Groundwater Potentiometric Surface Map
September 2015



Prepared For: USEPA Region 5

Prepared By: Tetra Tech