



Fx 715-623-6773

Wisconsin Department of Natural Resources

Environmental Cleanup & Brownfields Redevelopment

NR700 Semi-Annual Site Progress Report

Report ID: **1707335107131**

Wisconsin state law requires responsible parties submit site progress reports semi-annually until final case closure is granted by the Department of Natural Resources.

Reporting Period: **1/1/2017 - 6/30/2017**

Report Due By: **08/08/2017**

BRRTS No: **02-59-000198**

Activity Name: **ANIWA ARSENIC SITE**

Address: **MARSH RD NEAR CHICAGO & NW RR, ANIWA**

DNR Project Manager: **TAUREN BEGGS 920-662-5178 tauren.beggs@wisconsin.gov**

1 - Please select the current status of this site/activity:

Site Investigation: Field Sampling/Monitoring

2 - If a report has been submitted during the reporting period, please indicate the type and date of the report. If no activity occurred during the reporting period, please indicate why:

Monitoring Well Sampling and Timm Drinking Water Well

3 - Please select your role in this site/activity: Consultant

Your contact information:

Warren A. Hohn

715-551-9080

whohtesting@gmail.com

Name

Phone

Email

Received Time Aug. 15, 2017 2:22PM No. 0521

NORTHERN LAKE SERVICE, INC.
 Analytical Laboratory and Environmental Services
 400 North Lake Avenue - Crandon, WI 54520
 Ph: (715)-478-2777 Fax: (715)-478-3060

ANALYTICAL REPORT

Page 1

WDNR Laboratory ID No. 721026460
 WDATCP Laboratory Certification No. 105-330
 EPA Laboratory ID No. W100034

Printed: 05/15/17 Page 1 of 2

Client: Township of Aniwa
 Attn: Warren Hohn
 1201 Lake St
 Merrill, WI 54452

NLS Project: 279256

NLS Customer: 104168

Fax: 715 536 1277 **Phone:** 715 551 9080

Project: Aniwa Arsenic Dump

B-13R NLS ID: 987885

COC: 189011:1 Matrix: GW
 Collected: 04/08/17 17:00 Received: 05/11/17

Parameter	Result	Units	Dilution	LOD	LOQ	Analyzed	Method	Lab
Arsenic, dis. as As by ICP-MS	6300	ug/L	1	0.50*	1.0*	05/12/17	EPA 200.8, Rev 5.4	721026460

B-21 NLS ID: 987886

COC: 189011:2 Matrix: GW
 Collected: 04/08/17 16:30 Received: 05/11/17

Parameter	Result	Units	Dilution	LOD	LOQ	Analyzed	Method	Lab
Arsenic, dis. as As by ICP-MS	22	ug/L	1	0.50*	1.0*	05/12/17	EPA 200.8, Rev 5.4	721026460

B-21 NLS ID: 987887

COC: 189011:3 Matrix: GW
 Collected: 04/22/17 14:00 Received: 05/11/17

Parameter	Result	Units	Dilution	LOD	LOQ	Analyzed	Method	Lab
Arsenic, dis. as As by ICP-MS	8.5	ug/L	1	0.50*	1.0*	05/12/17	EPA 200.8, Rev 5.4	721026460

B-12 NLS ID: 987888

COC: 189011:4 Matrix: GW
 Collected: 04/22/17 15:00 Received: 05/11/17

Parameter	Result	Units	Dilution	LOD	LOQ	Analyzed	Method	Lab
Arsenic, dis. as As by ICP-MS	150	ug/L	1	0.50*	1.0*	05/12/17	EPA 200.8, Rev 5.4	721026460

B-13R NLS ID: 987889

COC: 189011:5 Matrix: GW
 Collected: 04/22/17 15:30 Received: 05/11/17

Parameter	Result	Units	Dilution	LOD	LOQ	Analyzed	Method	Lab
Arsenic, dis. as As by ICP-MS	8800	ug/L	1	0.50*	1.0*	05/12/17	EPA 200.8, Rev 5.4	721026460

B-21 NLS ID: 987890

COC: 189011:6 Matrix: GW
 Collected: 04/29/17 11:30 Received: 05/11/17

Parameter	Result	Units	Dilution	LOD	LOQ	Analyzed	Method	Lab
Arsenic, dis. as As by ICP-MS	3.1	ug/L	1	0.50*	1.0*	05/12/17	EPA 200.8, Rev 5.4	721026460

B-12 NLS ID: 987891

COC: 189011:7 Matrix: GW
 Collected: 04/29/17 15:00 Received: 05/11/17

Parameter	Result	Units	Dilution	LOD	LOQ	Analyzed	Method	Lab
Arsenic, dis. as As by ICP-MS	210	ug/L	1	0.50*	1.0*	05/12/17	EPA 200.8, Rev 5.4	721026460

B-13R NLS ID: 987892

COC: 189011:8 Matrix: GW
 Collected: 04/29/17 11:45 Received: 05/11/17

Parameter	Result	Units	Dilution	LOD	LOQ	Analyzed	Method	Lab
Arsenic, dis. as As by ICP-MS	8200	ug/L	1	0.50*	1.0*	05/12/17	EPA 200.8, Rev 5.4	721026460

Timm Well NLS ID: 987893

COC: 189011:9 Matrix: DW
 Collected: 04/29/17 12:30 Received: 05/11/17

Parameter	Result	Units	Dilution	LOD	LOQ/MCL	Analyzed	Method	Lab
Arsenic, dis. as As by ICP-MS	3.5	ug/L	1	0.50*	1.0/10*	05/12/17	EPA 200.8, Rev 5.4	721026460

Received Time Aug 15, 2017 2:22 PM No. 0521

NORTHERN LAKE SERVICE, INC.
Analytical Laboratory and Environmental Services
400 North Lake Avenue - Crandon, WI 54520
Ph: (715)-478-2777 Fax: (715)-478-3060

ANALYTICAL REPORT

Page 2

WDNR Laboratory ID No. 721026460
WDATCP Laboratory Certification No. 105-330
EPA Laboratory ID No. W100034
Printed: 05/15/17 Page 2 of 2
NLS Project: 279256
NLS Customer: 104168
Fax: 715 536 1277 Phone: 715 551 9080

Client: Township of Aniwa
Attn: Warren Hohn
1201 Lake St
Merrill, WI 54452

Project: Aniwa Arsenic Dump

Blank NLS ID: 987894

COC: 189011:10 Matrix: FB
Collected: 04/29/17 15:00 Received: 05/11/17

Parameter	Result	Units	Dilution	LOD	LOQ	Analyzed	Method	Lab
Arsenic, dis., as As by ICP-MS	[0.59]	ug/L	1	0.50*	1.0*	05/12/17	EPA 200.8, Rev 5.4	721026460

Values in brackets represent results greater than or equal to the LOD but less than the LOQ and are within a region of "Less-Certain Quantitation". Results greater than or equal to the LOQ are considered to be in the region of "Certain Quantitation". LOD and/or LOQ tagged with an asterisk(*) are considered Reporting Limits. All LOD/LOQs adjusted to reflect dilution and/or solids content.

ND = Not Detected (< LOD) LOD = Limit of Detection LOQ = Limit of Quantitation NA = Not Applicable
DWB = Dry Weight Basis %DWB = (mg/kg DWB) / 10000 1000 ug/L = 1 mg/L
MCL = Maximum Contaminant Levels for Drinking Water Samples. Shaded results indicate >MCL.

Reviewed by:



Authorized by:
R. T. Krueger
President

Town of Aniwa Results Pg 3

4-8-17

Sample	Well Elev.	Dpth to Water	Groundwater Elev.
B-13R	99.28'	11.18'	88.10'
B-21	93.67'	6.54'	87.13'

4-22-17

B-12	97.64'	8.64'	89.00'
B-13R	99.28'	9.80'	89.48'
B-21	93.67'	5.45'	88.22'

4-29-17

B-12	97.64'	8.88'	88.76'
B-13R	99.28'	10.06'	89.22'
B-21	93.67'	5.56'	88.11'

TMM (Outside Faucet) 3.50 ug/L
 Blank 0.59 ug/L

Sampled By Warren Hohn
 Warren A. Hohn

Town of Aniwa Readings Pg 4

4-8-17

<u>Sample #</u>	<u>Temp °C</u>	<u>pH</u>	<u>Spec Cond mS/cm</u>	<u>Gallons Pumped</u>
B-13 R	8.15	6.98	0.701	5
B-21	10.74	6.51	0.414	4

4-22-17

B-12	8.29	7.25	0.504	3.5
B-13 R	8.55	7.01	0.772	5
B-21	10.98	6.62	0.401	4

4-29-17

B-12	8.34	6.99	0.499	4
B-13 R	8.47	7.02	0.799	5
B-21	9.99	6.54	0.398	4

Sampled By Warren Hohu
Wanaw A. Hohu

Project: Arsenic Dump

B-10 NLS ID: 1005139

COC: 155386:1 Matrix: GW
 Collected: 05/30/17 14:30 Received: 07/20/17

Parameter	Result	Units	Dilution	LOD	LOQ	Analyzed	Method	Lab
Arsenic, dis. as As by ICP-MS	ND	ug/L	1	0.50*	1.0*	07/25/17	EPA 200.8, Rev 5.4	721026460

B-12 NLS ID: 1005140

COC: 155386:2 Matrix: GW
 Collected: 05/30/17 15:15 Received: 07/20/17

Parameter	Result	Units	Dilution	LOD	LOQ	Analyzed	Method	Lab
Arsenic, dis. as As by ICP-MS	120	ug/L	1	1.0*	2.0*	07/25/17	EPA 200.8, Rev 5.4	721026460
Metals digestion - dissolved ICP-MS	yes					07/24/17	EPA 200.8M, Rev 5.4	721026460

B-13R NLS ID: 1005141

COC: 155386:3 Matrix: GW
 Collected: 05/30/17 15:30 Received: 07/20/17

Parameter	Result	Units	Dilution	LOD	LOQ	Analyzed	Method	Lab
Arsenic, dis. as As by ICP-MS	8400	ug/L	1	1.0*	2.0*	07/25/17	EPA 200.8, Rev 5.4	721026460
Metals digestion - dissolved ICP-MS	yes					07/24/17	EPA 200.8M, Rev 5.4	721026460

B-13R (dup) NLS ID: 1005142

COC: 155386:4 Matrix: GW
 Collected: 05/30/17 15:40 Received: 07/20/17

Parameter	Result	Units	Dilution	LOD	LOQ	Analyzed	Method	Lab
Arsenic, dis. as As by ICP-MS	8300	ug/L	1	1.0*	2.0*	07/25/17	EPA 200.8, Rev 5.4	721026460
Metals digestion - dissolved ICP-MS	yes					07/24/17	EPA 200.8M, Rev 5.4	721026460

B-20 NLS ID: 1005143

COC: 155386:5 Matrix: GW
 Collected: 05/30/17 14:45 Received: 07/20/17

Parameter	Result	Units	Dilution	LOD	LOQ	Analyzed	Method	Lab
Arsenic, dis. as As by ICP-MS	[1.9]	ug/L	1	1.0*	2.0*	07/25/17	EPA 200.8, Rev 5.4	721026460
Metals digestion - dissolved ICP-MS	yes					07/24/17	EPA 200.8M, Rev 5.4	721026460

B-21 NLS ID: 1005144

COC: 155386:6 Matrix: GW
 Collected: 05/30/17 14:00 Received: 07/20/17

Parameter	Result	Units	Dilution	LOD	LOQ	Analyzed	Method	Lab
Arsenic, dis. as As by ICP-MS	3.9	ug/L	1	1.0*	2.0*	07/25/17	EPA 200.8, Rev 5.4	721026460
Metals digestion - dissolved ICP-MS	yes					07/24/17	EPA 200.8M, Rev 5.4	721026460

Timm Well NLS ID: 1005145

COC: 155386:7 Matrix: DW
 Collected: 05/30/17 15:50 Received: 07/20/17

Parameter	Result	Units	Dilution	LOD	LOQ/MCL	Analyzed	Method	Lab
Arsenic, tot. recoverable as As by ICP-MS	1.5	ug/L	1	0.50*	1.0 / 10*	07/25/17	EPA 200.8, Rev 5.4	721026460

Blank NLS ID: 1005146

COC: 155386:8 Matrix: GW
 Collected: 05/30/17 15:45 Received: 07/20/17

Parameter	Result	Units	Dilution	LOD	LOQ	Analyzed	Method	Lab
Arsenic, dis. as As by ICP-MS	ND	ug/L	1	0.50*	1.0*	07/25/17	EPA 200.8, Rev 5.4	721026460

NORTHERN LAKE SERVICE, INC.
Analytical Laboratory and Environmental Services
400 North Lake Avenue - Crandon, WI 54520
Ph: (715)-478-2777 Fax: (715)-478-3060

ANALYTICAL REPORT

WDNR Laboratory ID No. 721026460
WDATCP Laboratory Certification No. 105-330
EPA Laboratory ID No. WI00034

Printed: 07/28/17 Page 2 of 2

NLS Project: 283345

NLS Customer: 104168

Fax: 715 536 1277 Phone: 715 551 9080

Client: Township of Aniwa
Attn: Warren Hohn
1201 Lake St
Merrill, WI 54452

Project: Arsenic Dump

B-13R NLS ID: 1005147

COC: 155386:9 Matrix: GW
Collected: 06/24/17 15:45 Received: 07/20/17

Parameter	Result	Units	Dilution	LOD	LOQ	Analyzed	Method	Lab
Arsenic, dis. as As by ICP-MS	7700	ug/L	1	1.0*	2.0*	07/25/17	EPA 200.8, Rev 5.4	721026460
Metals digestion - dissolved ICP-MS	yes					07/24/17	EPA 200.8M, Rev 5.4	721026460

B-21 NLS ID: 1005148

COC: 155386:10 Matrix: GW
Collected: 06/24/17 15:33 Received: 07/20/17

Parameter	Result	Units	Dilution	LOD	LOQ	Analyzed	Method	Lab
Arsenic, dis. as As by ICP-MS	4.0	ug/L	1	1.0*	2.0*	07/25/17	EPA 200.8, Rev 5.4	721026460
Metals digestion - dissolved ICP-MS	yes					07/24/17	EPA 200.8M, Rev 5.4	721026460

Values in brackets represent results greater than or equal to the LOD but less than the LOQ and are within a region of "Less-Certain Quantitation". Results greater than or equal to the LOQ are considered to be in the region of "Certain Quantitation". LOD and/or LOQ tagged with an asterisk(*) are considered Reporting Limits. All LOD/LOQs adjusted to reflect dilution and/or solids content.

ND = Not Detected (< LOD) LOD = Limit of Detection LOQ = Limit of Quantitation NA = Not Applicable
DWB = Dry Weight Basis %DWB = (mg/kg DWB) / 10000 1000 ug/L = 1 mg/L
MCL = Maximum Contaminant Levels for Drinking Water Samples. Shaded results indicate >MCL.

Reviewed by:



Authorized by:
R. T. Krueger
President

Town of Anawa Results

<u>Sample</u>	<u>Well Water Elev.</u>	<u>Dpth. to Water</u>	<u>Groundwater Elev</u>
<u>5-30-17</u>			
B-10	96.64'	6.32'	90.32'
B-12	99.64'	9.40'	88.24'
B-13	99.28'	10.44'	88.84'
B-13 R	99.28'	10.44'	88.84'
B-20	97.70'	9.10'	88.60'
B-21	93.67'	6.08'	87.59'

Turn Well
(Hse)

Sampled by Warren A. Hahn

6-24-17

B-13	99.28'	11.16'	88.12'
B-21	93.67'	6.50'	87.17'

Sampled by Warren A. Hahn
Warren A. Hahn

Town of Aniwa Readings

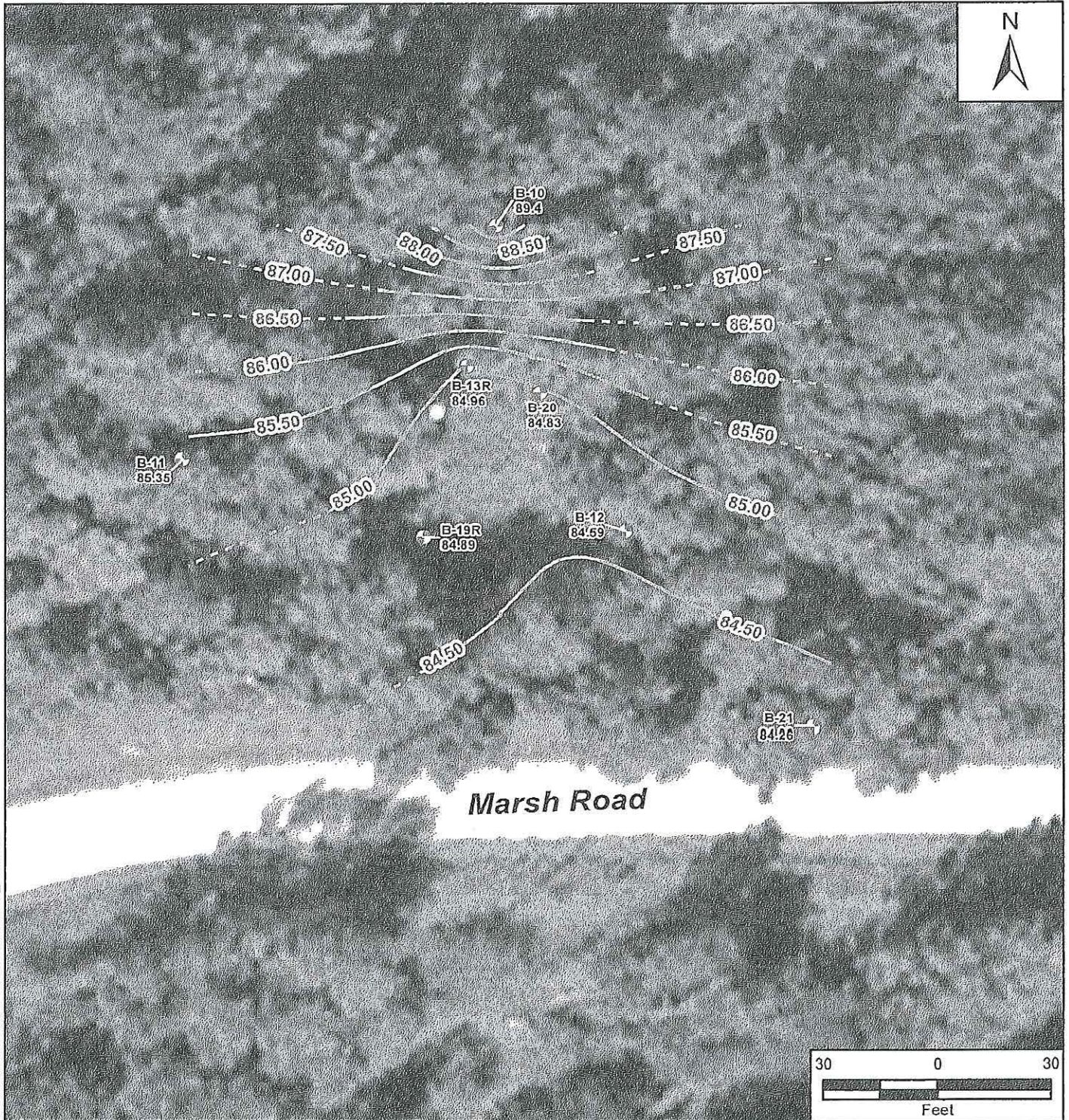
Pg 4

5-30-17

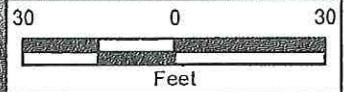
<u>Sample #</u>	<u>Temp °C</u>	<u>pH</u>	<u>Spec Cond mS/cm</u>	<u>Gallons Pumped</u>
B-10	9.71	4.92	0.443	5
B-12	9.05	6.47	0.524	4
B-13	9.25	6.77'	0.762	5.5
B-13 R	9.25	6.77'	0.762	5.5
B-20	9.50	6.94'	0.598	5
B-21	9.74	6.62'	0.404	4

Sampled by Warren Hoh

Warren A. Hoh



File Path: G:\G9025-START\W\Wisconsin\Aniwa Arsenic\c\mxd\Fig 5-PotentiometricSurface_0915.mxd



Legend

- Monitoring Well Location
- Groundwater Elevation Contour
- Inferred Groundwater Elevation Contour
- 87.5 Groundwater Elevation

Source: Bing Maps Hybrid, 2012

Aniwa Arsenic Site
Aniwa, Shawano County, Wisconsin

Figure 5
Groundwater Potentiometric Surface Map
September 2015



Prepared For: USEPA Region 5 Prepared By: Tetra Tech

Coordinate System: GCS WGS 1984
Datum: WGS 1984
Units: Degree