



Wisconsin Public Service Corporation

700 North Adams Street
P.O. Box 19001
Green Bay, WI 54307-9001

www.wisconsinpublicservice.com

March 15, 2017

Ms. Margaret Gielniewski
USEPA Region 5 – SR6J
77 W. Jackson Boulevard
Chicago, Illinois 60604-3590

**SUBJECT: February, 2017 Monthly Progress Report – Former Green Bay MGP
Wisconsin Public Service Corporation
CERCLA Docket No. V-W-06-C-847
Spill Site ID – B5BV**

Dear Ms. Gielniewski:

Please find enclosed the monthly progress report for the Wisconsin Public Service Corporation's former manufactured gas plant site in Green Bay, WI. If you have any questions, please contact me at your convenience at (414) 221-2156 or frank.dombrowski@we-energies.com.

Sincerely,

A handwritten signature in black ink, appearing to read 'Frank Dombrowski', is written over a light blue horizontal line.

Frank Dombrowski
Principal Environmental Consultant
WEC Energy Group - Business Services
Environmental Dept.

Enclosure

cc: Mr. William Fitzpatrick, WDNR (hardcopy and email)
Ms. Cheryl Bougie, WDNR (hardcopy and email)
Ms. Jennifer Knoepfle, CH2M (hardcopy and email)
Ms. Kristin DuFresne, WDNR (hardcopy and email)



ENVIRONMENTAL CONSULTANTS

234 W. FLORIDA STREET, FIFTH FLOOR
MILWAUKEE, WISCONSIN 53204
(P) 414.837.3607
(F) 414.837.3608

Mr. Frank Dombrowski
WEC Business Services, LLC
333 W. Everett St., A231
Milwaukee, WI 53290

March 15, 2017
(1584)
(via email only)

RE: February, 2017 Monthly Progress Report
Green Bay Former MGP, Green Bay, Wisconsin
Wisconsin Public Service Corporation

CERCLA Docket No. V-W-06-C-847
Site Spill ID – B5BV
CERCLIS ID – WIN000509948

Dear Mr. Dombrowski:

Natural Resource Technology, Inc. (NRT) is providing this Monthly Progress Report for the Wisconsin Public Service Corporation (WPSC) Green Bay Former Manufactured Gas Plant (MGP).

1) Progress Made During the Past Month

- Participated in a meeting on February 22, 2017 between USEPA, WPSC, and the Lower Fox River Group to discuss sediment delineation near the former MGP site.

2) Analytical and Other Testing Results Received

- Indoor air and soil vapor sample results from the Annex Building have been attached to this letter. Data validation materials will be posted to the ShareFile site.

3) Projected Work

WPSC Actions

- Prepare for RI data summary discussion and completion of Remedial Investigation Report.
Continued RI data management.

USEPA Actions

- None.

4) Anticipated Schedule

Table with 3 columns: Deliverable or Milestone, Target Date, Actual Date. Rows include Submitted Completion Report, Focused Sediment Investigation Tech Memo, and USEPA comments on Completion Report.



Deliverable or Milestone	Target Date	Actual Date
Receive USEPA comments on Sediment Tech Memo No 1 – Rev 0	--	July 21, 2014
Submit response to comments with Sediment Tech Memo No1 – Rev 1	--	August 1, 2014
Complete sediment sampling described in Tech Memo No1 – Rev 1	August 2014	August 29, 2014
Receive USEPA comments on Completion Report – Rev 0	--	July 21, 2014
Pre-Scoping Site-Specific Work Plan (SSWP) Scoping Meeting	August 19, 2014	August 19, 2014
Submit SSWP – Rev 0 to USEPA	September 2014	September 23, 2014
Receive USEPA comments on SSWP Rev 0	November 2014	November 5, 2014
Respond to USEPA comments on SSWP Rev 0 and issue Revision 1 of the RI Report	December 2014	December 22, 2014
Submit Sediment Sampling Technical Memorandum	December 2014	February 6, 2015
Participate in Lower Fox River stakeholder meeting	January 7, 2015	January 7, 2015
Receive USEPA comments on SSWP Revision 1	February 2015	January 26, 2015
Respond to USEPA comments on SSWP Rev 1	March 12, 2015	March 12, 2015
Receive USEPA comments on Focused Sediment Investigation Report	--	March 20, 2015
Receive USEPA approval of SSWP Revision 2	--	March 20, 2015
Respond to USEPA comments and submit Focused Sediment Report Revision 1	May 4, 2015	May 4, 2015
Receive USEPA comments on Focused Sediment Report Revision 1		May 21, 2015
Respond to USEPA comments on Focused Sediment Report Revision 1 with report Revision 2	July 5, 2015	June 29, 2015
Execute upland SSWP Revision 2 field activities	June 2015, pending site access	October 21, 2015
Receive USEPA comments on Focused Sediment Report Revision 2		July 31, 2015
Submit response to USEPA comments on Focused Sediment Report Revision 2.	September 14, 2015	September 14, 2015
Receive USEPA response to comments regarding additional upland soil borings along shoreline		September 29, 2015
Submit SSWP Rev 2 modified October 2015	October 9, 2015	October 9, 2015
Quarterly RI groundwater monitoring	November 2015, February, May, and August 2016	November 11, 2015, Feb. 16, 2016 May 8, 2016, August 23, 2016
RI Soil Vapor Sampling (SWWP Rev 2)	February 2016 and July 2016	February 3, 2016
Collection of additional soil samples to complete stepout boring process initiated during SSWP Rev 2 field activities	February 8, 2016	February 8, 2016
Submittal of Technical Memorandum regarding VI evaluation of Annex Building.	May 2016	May 31, 2016





Deliverable or Milestone	Target Date	Actual Date
USEPA provided comments to VI Technical Memorandum		July 6, 2016
Submittal of Technical Memorandum (rev 1) incorporating USEPA comments		July 15, 2016
USEPA issued approval of Technical Memorandum (rev 1)		July 28, 2016
Installation of vapor probes and sub-slab monitoring ports in Annex Building		July 30, 2016 (Saturday)
Second round of RI Soil vapor probe monitoring (SWWP Rev 2)		August 5, 2016
Sample first round of air and soil vapor sampling in Annex Building.		August 6, 2016 (Saturday)
Re-sampling of Annex Bldg indoor air monitoring locations		September 22, 2016
Resampling results received.		October 7, 2016
Third party validation report received.		November 2, 2016
Planned sample second/last round of air and soil vapor sampling in Annex Building.	December 2016	December 4, 2016
December 2016 GW sampling event	December 13, 2016	December 13, 2016
Submitted Preliminary RI Data to USEPA for Review		February 10, 2017
Meeting to Discuss Preliminary RI Data with USEPA	February, 2017	TBD
Semi-Annual routine groundwater monitoring	May and November 2017	

5) Problems or Potential Problems Encountered

- None.

6) Actual or Planned Resolution of Problems or Potential Problems

- None.



Mr. Frank Dombrowski
March 15, 2017
Page 4



NATURAL RESOURCE TECHNOLOGY, INC.

Brian Hennings, PG
Senior Hydrogeologist

Jennifer M. Hagen, PE
Principal Engineer

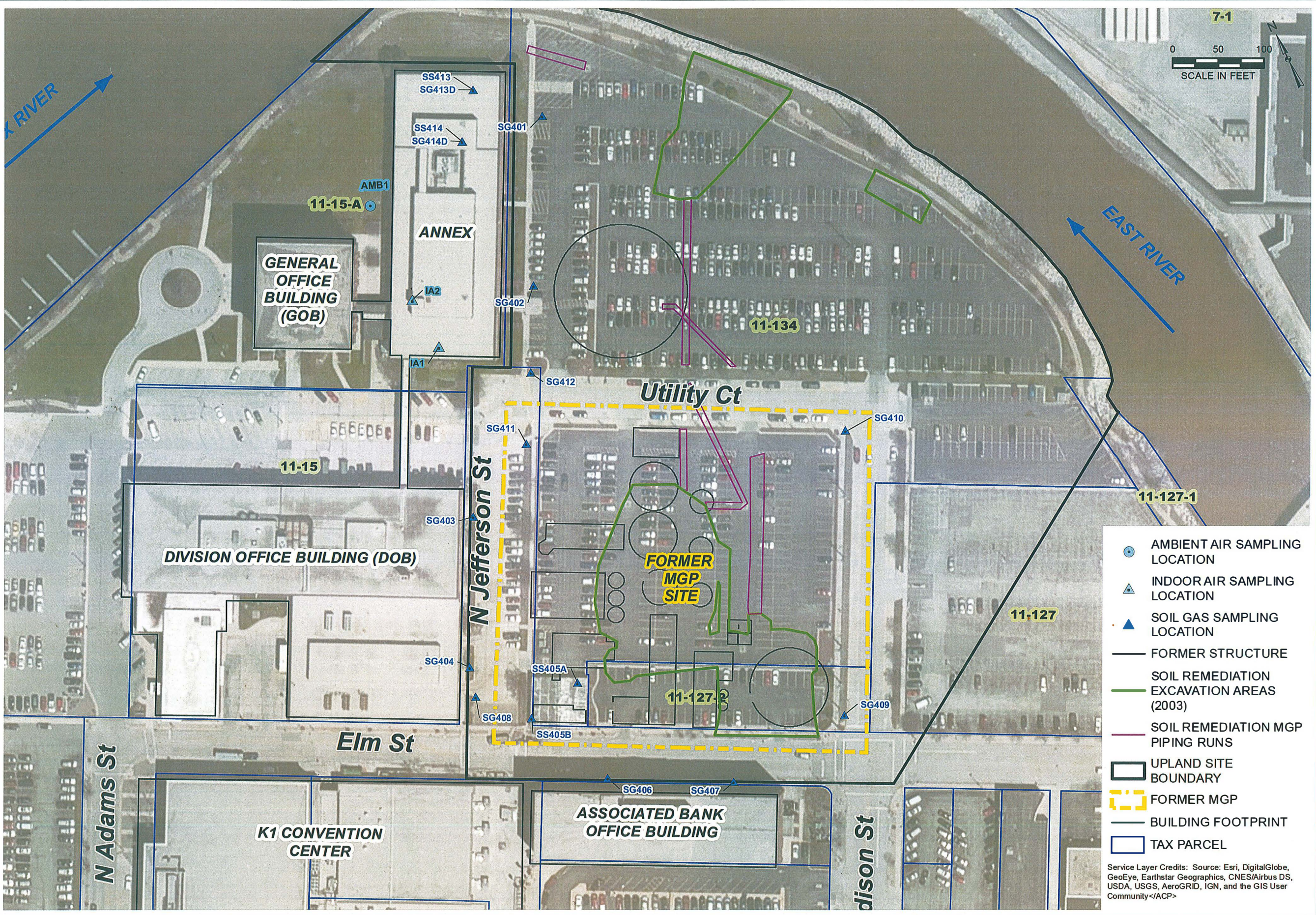
For distribution to:

Ms. Margaret Gielniewski (electronic copy)
Ms. Kristin DuFresne, WDNR (hardcopy and email)
Mr. Bill Fitzpatrick, WDNR (hardcopy and email)
Ms. Cheryl Bougie, WDNR (hardcopy and email)
Ms. Jennifer Knoepfle, CH2M (email only)

encl: Site Map
December 2016 Indoor Air, Ambient, and Soil Gas Tables

[File:\1584 February 2017 WPSC Green Bay 170308.doc]

Y:\GIS\Projects\15158-AMX\Figure 8_Soil Vapor and Indoor Air.mxd Author: sstolz Date/Time: 11/10/2016, 10:21:59 AM



- AMBIENT AIR SAMPLING LOCATION
- ▲ INDOOR AIR SAMPLING LOCATION
- ▲ SOIL GAS SAMPLING LOCATION
- FORMER STRUCTURE
- SOIL REMEDIATION EXCAVATION AREAS (2003)
- SOIL REMEDIATION MGP PIPING RUNS
- ▭ UPLAND SITE BOUNDARY
- ▭ FORMER MGP
- ▭ BUILDING FOOTPRINT
- ▭ TAX PARCEL

Service Layer Credits: Source: Esri, DigitalGlobe, GeoEye, Earthstar Geographics, CNES/Airbus DS, USDA, USGS, AeroGRID, IGN, and the GIS User Community </ACP>

DRAWN BY/DATE:
MMD 10/28/16
REVIEWED BY/DATE:
PRB 10/28/16
APPROVED BY/DATE:
BGH

SOIL VAPOR AND INDOOR AIR SAMPLING LOCATIONS

FORMER GREEN BAY MANUFACTURED GAS PLANT SITE
WISCONSIN PUBLIC SERVICE CORPORATION
CITY OF GREEN BAY, WISCONSIN

PROJECT NO: 1584/18.1

FIGURE NO: 8



Validated December 2016 Ambient Air, Indoor Air and Soil Gas Sample Results

Wisconsin Public Service Corporation
 Green Bay Former Manufactured Gas Plant Site
 700 N Adams St, Green Bay, Wisconsin
 BRRTS#: 02-05-000254 UPSEPA#: WIN000509948

Sample Location	Sample Depth (feet)	Sample Date	VOC						Inorganic			
			1,2,4-Trimethylbenzene	Benzene	Ethylbenzene	Naphthalene	Toluene	Xylenes, Total	Carbon Dioxide	Methane	Oxygen	
			ug/m3	ug/m3	ug/m3	ug/m3	ug/m3	ug/m3	Percent	Percent	Percent	
120416001	AMB2	--	12/04/16	<1.20 U	<0.760 U	<1.00 U	<0.31 U	<0.9 U	<3.10 U	<0.08 U	<0.10 U	17.9
120416002	IA2	--	12/04/16	<1.30 U	<0.84 U	<1.100 U	<0.35 U	1.5	<3.40 U	<0.08 U	<0.10 U	18.3
120416003	IA1	--	12/04/16	<1.20 U	<0.780 U	<1.100 U	<0.32 U	<0.9 U	<3.20 U	<0.08 U	<0.10 U	18.0
120416004	SS413	Subslab	12/04/16	42	1.7 J	8.1	6.6	27	30	0.11	<0.10 U	17.2
120416005	SG413D	3.5 -4.0	12/04/16	20	7.2 J	15 J	5.0	190 J	73	4.19	<0.10 U	13.2
120416006	SG413D QC1	3.5 - 4.0	12/04/16	15	5.5 J	11 J	3.8	130 J	55	4.19	<0.10 U	13.6
120416007	SS414	Subslab	12/04/16	6.8	<1.200 U	2.2	8.4	7.1	9.2	2.28	0.25	15.7
120416008	SG414D	3.5 -4.0	12/04/16	7.0	<1.200 U	5.6	3.3	31	26	3.60	<0.10 U	14.2

[O/C:ECK 03/13/17]

NOTES:
 < = Concentration is less than reported limit
 U = Not detected
 J = Estimated concentration at or above the LOD and below the Limit of Quantification (LOQ)
 NS = No Standard
 QC = Quality Control (Field Duplicate) sample
 ug/m³ = micrograms per cubic meter
 na - not applicable
 Result values/flags may differ from lab report values/flags due to changes applied in third party validation report.

