



# Brennan Daily Report of Operations

Project Code:  
 Start Date: 25-Mar-19  
 Client: WPSC  
 Project: North Focus Area MGP Cleanup

Report Name: 20190603

Date	Cal. Wk. #	Production Week #
Monday 03-Jun-19	23	10

**Operations Overview:**

**Mobilization / Demobilization**

No operations were conducted today.

**Offloading/Amendment Operations**

Amending operations were conducted from 8:00 p.m. to 12:00 a.m. An representative from Allu was onsite training operators in the use of the Allu mixing system during the night shift. After amendment operations were completed equipment and crane mats were rearranged onsite to allow for more efficient amending operations.

**Mechanical Dredging**

Mechanical dredging operations began today, starting on the southern end of the North Focus Area Stage 2 design. Three Ashland hopper barges were loaded, and two were transloaded and then flected in one of the Mississippi hopper barges to the Pulliam offloading facility. Overall the Liebherr 954 Plant covered a total of 2,912 SF of design area, all of which was 1st pass operations.

**Hydraulic Dredging Operations**

No operations were conducted today.

**Turbidity Management**

No operations were conducted today.

**Odor / Sheen Management**

No operations were conducted today.

**Surveying / Sampling**

No operations were conducted today.

**Misc. Notes**

Operations were conducted from 0600 to 2400. No vessels requiring assistance transited through the ERTB today. Vibration monitoring equipment remains installed on the GP Day St Mill property. Mechanical dredging operations were suspended until the NFA dredging design could be sent to J.F. Brennan for construction.



Mechanical Dredging Operations



Transloading Operations

	Day	Week	2019 Season
Estimated Mechanical Volume Removed:	200 CY	200 CY	200 CY
Days of Hydrographic Survey in Containment	0 Days	0 Days	7 Days
Shifts of No Spudding Overburden Dredging	0 Shift	0 Shift	13 Shift
Tons of Portland Cement Delivered to Pulliam Slip	26.3 Tons	26.3 Tons	106.5 Tons
Pairs of Sheet Pile Driven To Grade	0	0	213
		Total Estimated Volume Removed:	200 CY



Daily Mechanical Dredge Report

Liebherr 954

Start Date: 25-Mar-19

Client: WPSC

Project: NFA MGP Cleanup

Report Name

20190603

Summary table with columns: Date, Cal. Wk #, Proj. Prod. Wk #

Main activity log table with columns: Time span (From/To), Minutes (Delay/Operat'l), Activity (Code/Area), Codes (Delay/Activity), Description of activity, delay, production, sediment

Summary table for minutes and hours: Total in min., Total in hrs.

Summary table for Barges: Barges Filled, Barges Transloaded

Summary table for Advance Sq.ft.: Advance, Sq.ft.

Summary table for Advance SF: GOH, NOH, Advance, SF

Summary table for Amending Operations: Tons of Portland Added

Summary table for Day Position: SMU, Code

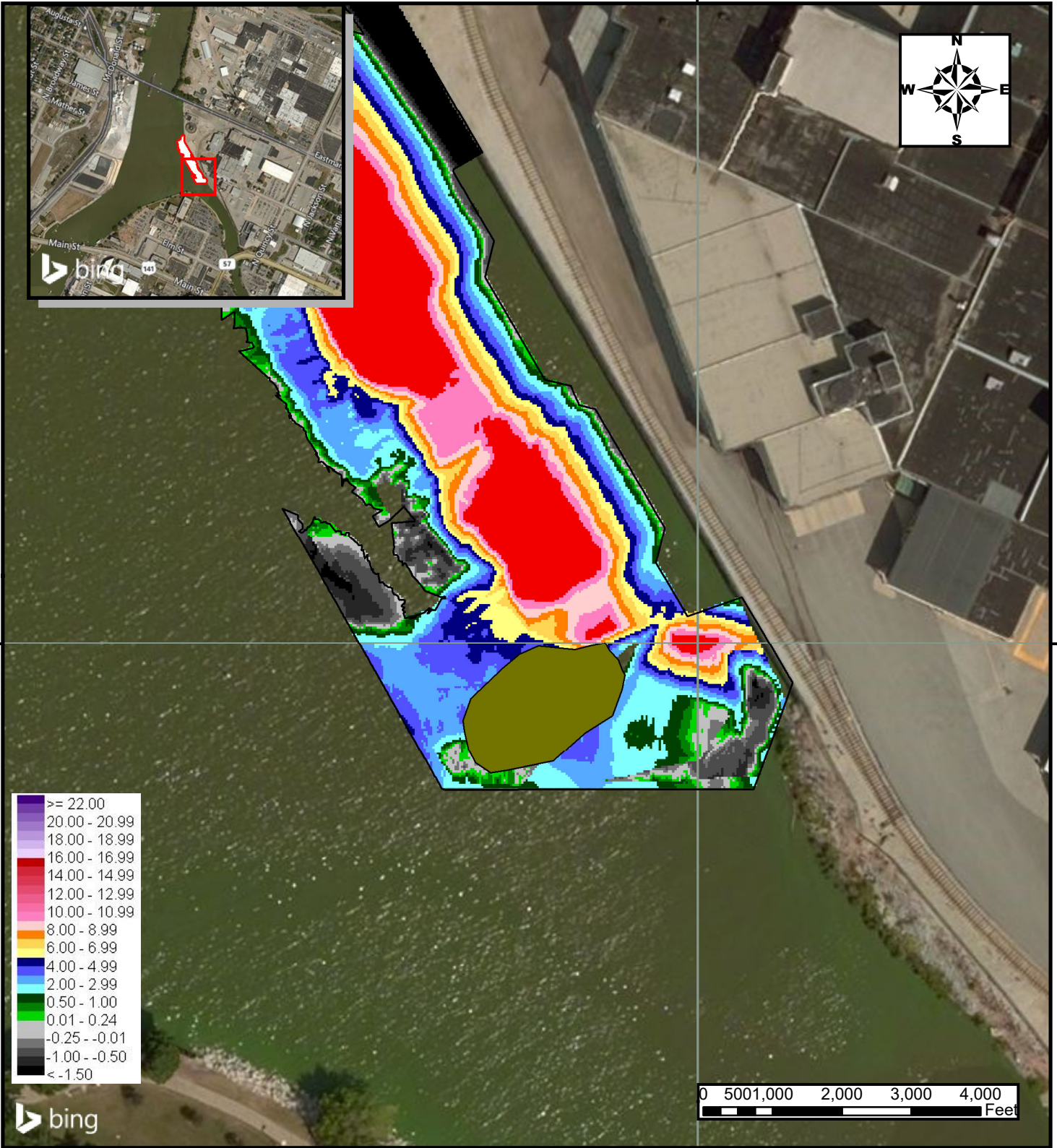
Detailed Delay Code table with columns: Delay Code, Description, Time, Percentage

Summary table for Activity Codes: Stage 2 (1st Pass, 2nd Pass), Stage 3 (1st pass, 2nd pass), Redredge

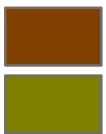
Remarks:

Horizontal lines for handwritten remarks.

2488000



2488000



**First Pass**



**Second Pass**

June 3rd, 2019 Liebherr 954 Daily Progress

**Areas:** MGP NFA

J.F. Brennan Co. Inc.

**DMUs:**

**Notes:** - Difference Matrix represents Top of Sediment vs Design







Project Code:  
 Start Date: 03/25/2019  
 Client: WPSC  
 Project: NFA MGP Cleanup

# Brennan Daily Report of Operations

Report Name: 20190603

Date	Cal. Wk. #	Production Week #
Monday 03-Jun-19	23	10

## Daily Safety Updates

### Tool Box Topic Notes:

HAZARDS OF THE TASKS OF THE DAY

### Daily Safety Topic:

"Pinch Points and Proper Use of Fire Extinguishers"

### Brennan Culture Tenant:

"Keys to our success"

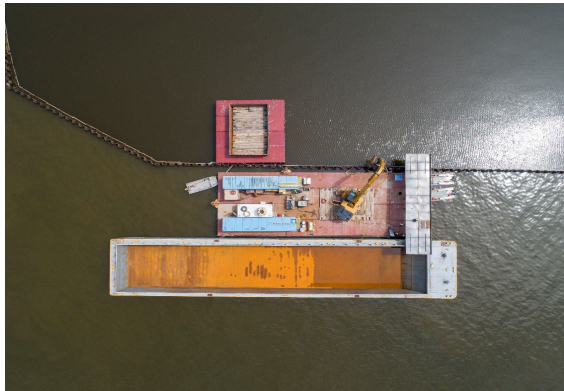
"QUALITY" - High quality work is delivered at all work sites. We analyze our work before starting, finding opportunities to deliver a better product to the client. We realize that the quality of our work is a direct reflection on our organization and good quality will provide opportunities for future work.

### Incidents To Report:

NONE

### Notes:

Mechanical Dredging  
 Amending Operations



Transload Plant



Amending Operations

## J.F. Brennan Staffing

Position	Count	Hours
Management, Safety & Office	2	24
Civil Crew	12	144
Dredge Crew	0	0
Mechanics	1	12
Subcontractors	0	0
<b>TOTAL WORKERS ON-SITE</b>	<b>15</b>	
<b>WORK HOURS ON-SITE THIS DATE</b>		<b>180</b>
<b>CUMULATIVE HOURS FROM PREV.</b>		<b>4,788</b>
<b>TOTAL WORK HOURS FROM PROJECT</b>		<b>4,968</b>

## Climate Summary

Temperature (Degrees F)	High	67°F
	Low	41°F
Wind (mph & dir.)	Highest	16 MPH
	Gusts	MPH
	Average	5 MPH (VAR)
Precipitation	Today	0.00 in.
	MTD	0.23 in.
	YTD	15.76 in.
Conditions	Fair/Cloudy	

## Onsite Equipment

- |                                |                              |
|--------------------------------|------------------------------|
| (1) American 7260 Crane        | (1) Hydraulic Powerpack      |
| (1) Material Barge 120'x30'x7' | (1) Oxygen Acetylene Tanks   |
| (18) Flexi float - 40'x10'x5'  | (1) Rain For Rent Tanks      |
| (10) Flexi Float - 20'x10'x5'  | (1) Komastu 390 LR           |
| (4) Spud wells                 | (1) CAT 345 Material Handler |
| (4) Spuds                      | (3) Rental Light Plants      |
| (2) Storage Connex Boxes       | (1) Rental Scale             |
| (1) Liebherr LH-60             | (1) CAT 336                  |
| (1) Liebherr 954               | (1) Sennebogen 850           |
| (1) Allu Pressure Feeder       |                              |