

From: Dombrowski, Frank J <frank.dombrowski@wecenergygroup.com>
Sent: Monday, September 16, 2019 8:39 AM
To: 'Rolfes.sarah@epa.gov'
Cc: Fitzpatrick, William - DNR; Bougie, Cheryl - DNR; 'Hagen, Jennifer'; 'Brian G. Hennings (bhennings@naturalrt.com)'; 'Staci Goetz (Staci.Goetz@obg.com)'; Krueger, Sarah E - DNR; DNR RR NER; adrienne.korpela@jacobs.com
Subject: WPS Former Green Bay MGP - August 2019 USEPA Monthly Progress Report
Attachments: August 2019 EPA MPR w Attachments.pdf

Sarah,

Please find attached the monthly progress report for the former WPSC Green Bay, WI MGP site.

As always, please feel free to contact me if there are any questions or if additional information may be needed.

Thanks,

Frank Dombrowski
Principal Environmental Consultant
WEC Energy Group - Business Services
Environmental Dept. - Land Quality Group
333 W. Everett St., A231
Milwaukee, WI 53203
Office: (414) 221-2156
Cell: (414) 587-4467
Fax: (414) 221-2022

Serving WEC Energy Group, We Energies, Wisconsin Public Service, Michigan Gas Utilities, Minnesota Energy Resources, Peoples Gas and North Shore Gas



Wisconsin Public Service Corporation

700 North Adams Street
P.O. Box 19001
Green Bay, WI 54307-9001

www.wisconsinpublicservice.com

September 13, 2019

Ms. Sarah Rolfes
Remedial Project Manager
United States Environmental Protection Agency
77 W. Jackson Boulevard
Chicago, Illinois 60604-3590

**RE: August 2019 Monthly Progress Report
Green Bay Former Manufactured Gas Plant
Green Bay, Wisconsin
Wisconsin Public Services Corporation
CERCLA Docket No. V-W-06-C-847, CERCLIS ID – WIN000509948**

Dear Ms. Rolfes:

Wisconsin Public Services Corporation (WPSC) is providing this monthly progress report for the WPSC Former Green Bay Manufactured Gas Plant (MGP) Site.

1) PROGRESS MADE DURING THE PAST MONTH

- Prepared and submitted July 2019 Monthly Progress Report to United States Environmental Protection Agency (USEPA) by August 15, 2019.
- Participated in North Focus Area (NFA) Work Groups.
- Completed Quality Control (QC) visual observation of sediment thickness via 1-inch core collection within completed dredged areas of the NFA on August 6, 2019.
- Completed QC visual observations of dense non-aqueous phase liquid (DNAPL) via bucket sample collection within completed dredged areas of the NFA on August 2, 2019.
- Submitted daily QC visual observations of sediment thickness via One Drive shared folder.
- Submitted daily QC visual observations of DNAPL observations via One Drive shared folder.
- Submitted NFA Containment Wall Residuals Summary Memorandum on August 9, 2019.
- Submitted South Focus Area (SFA) Remedial Action Summary Report, Revision 2 on August 23, 2019.
- Submitted NFA Containment Wall, Revision 1 on August 28, 2019.
- Submitted NFA Post-Construction SAP, Revision 2, to address the expanded placement of residual sand cover to the containment structure. The SAP was incorporated as Appendix N to the August 21, 2019, Addendum to the Final 2019 Update to Phase 2B Remedial Action Work Plan (RAWP) – MGP North Focus Area Report by TetraTech and AnchorQEA. It was resubmitted with the revised RAWP on August 30, 2019.

2) ANALYTICAL AND OTHER TESTING RESULTS RECEIVED

- NFA weekly performance air monitoring.
- NFA post-construction samples.

3) PROJECTED WORK

WPSC Actions

- Submit monthly progress report to USEPA by the 15th of the month.
- Perform NFA QC visual core and visual bucket observations.
- Perform NFA quality assurance (QA) residual sand thickness verification core collection.
- Participate in work group meetings with USEPA to discuss the NFA remedial action (RA) activities.
- Prepare a Site-Specific Work Plan (SSWP) Addendum for replacement of MW402R, and a Pre-Design Investigation for an Upland Early Action Removal.
- Prepare a NFA RA Summary Report.
- Prepare for completion of a Remedial Investigation/Feasibility Study (RI/FS) report.

USEPA Actions

- Participate in work group meetings to discuss NFA RA.
- Participate in NFA QA residual sand thickness core collection activities.
- Prepare for completion of RI/FS report.

4) PROBLEMS OR POTENTIAL PROBLEMS ENCOUNTERED

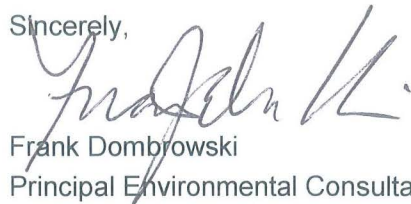
- None

5) ACTUAL OR PLANNED RESOLUTION OF PROBLEMS OR POTENTIAL PROBLEMS

- None

If you have any questions, please don't hesitate to contact me at (414) 221-2156 or via email at frank.dombrowski@wecenergygroup.com.

Sincerely,



Frank Dombrowski
Principal Environmental Consultant
WEC Business Services – Environmental Dept.

Enclosures: Table 1. Performance Air Monitoring Results Summary
 Table 2. August 2019 Sediment Sample Results Summary
 Figure 1. North Focus Area Post-Construction Sample Locations
 Figure 2. South Focus Area Post-Construction Sample Locations

For distribution to: Ms. Sarah Krueger, WDNR (via US Mail and email)
Ms. Cheryl Bougie, WDNR (via email)
Mr. William Fitzpatrick, WDNR (via email)
WDNR Northeast Region (via email to DNRRRNER@wisconsin.gov)
Ms. Adrienne Korpela, Jacobs (via email)
Ms. Staci Goetz, Ramboll (via email)

Table 1. Performance Air Monitoring Results Summary

Monthly Progress Report - Air Monitoring 2019 NFA
 Former Green Bay MGP Sediment
 Green Bay, WI
 BRRTS#: 02-05-000254 USEPA#: WIN000509948

9-digit Code	Sample Location	Orientation	Sample Date	VOC		VOC		VOC		VOC		VOC	
				Benzene	Ethylbenzene	Naphthalene	Toluene	Xylenes, Total					
Reporting Units:				µg/m ³	µg/m ³	µg/m ³	µg/m ³	µg/m ³	µg/m ³				
				Result	Flag	Result	Flag	Result	Flag	Result	Flag	Result	Flag
Baseline Air Average Concentration:				0.33	0	0		2.6		0.69			
Acceptable 24-hour Average Air Concentration:				31.95	998.71	104.85		354.24		99.87			
073119035	AMS-4	Upwind	07/31/2019	1.1	2.2	2.5	J	20		7.4			
080819036	AMS-4	Upwind	08/08/2019	0.31	J	0.32	U	1.6	U	0.90		0.61	U
073119034	AMS-5	Downwind	07/31/2019	0.41	J	0.44	J	1.6	U	3.1		1.5	J
080819037	AMS-5	Downwind	08/08/2019	1.1		1.4		4.7		1.5		1.7	J
073119033	AMS-6	Crosswind	07/31/2019	3.7		5.6		23		4.9		5.4	
080819038	AMS-6	Crosswind	08/08/2019	0.37	J	0.32	U	1.6	U	0.64	J	0.61	U

Total Number of Samples Analyzed:	6	6	6	6	6
Number of Detections:	6	4	3	6	4
Min:	0.31	0.44	2.5	0.64	1.5
Max:	3.7	5.6	23	20	7.4
Baseline Air Average Concentration:	0.33	0	0	2.6	0.69
Number of Samples above Baseline Air Concentration:	5	4	3	3	4
Number of Samples above Upwind Values:	3	2	2	1	1
Acceptable 24-hour Average Air Concentration:	31.95	998.71	104.85	354.24	99.87
Number of Samples that Exceed Acceptable Air Concentration:	0	0	0	0	0

[O:MGP 8/29/19, C:SGW 9/6/2019, QA:SAE 9/5/19]

Average Concentration ³	Sample Location	Acceptable 24-hour Average Concentration (µg/m ³)				
		31.95	998.71	104.85	354.24	99.87
	AMS-4	0.70	1.18	1.6	10.45	3.85
	AMS-5	0.75	0.92	2.7	2.3	1.6
	AMS-6	2.03	2.88	11.9	2.77	2.85

Analyte concentration exceeds the standard for:
BOLD Value exceeds the Baseline Air Average Concentration
 No Values Exceed the Acceptable 24-hour Average Concentration
 Yellow highlighting in Statistics = detected concentrations above Baseline Average Concentration
 Orange highlighting in Statistics = detected concentrations above Upwind Concentrations

(N) = Normalized sample locations created from combining parent and field duplicate samples following EPA protocol
 µg/m³ = micrograms per cubic meter
 J = Estimated concentration
 MGP = manufactured gas plant
 NFA = North Focus Area
 U = Concentration was not detected above the reported limit

1. Baseline Air Average Concentrations derived from the average concentrations in Table 3.
2. Acceptable 24-hour Average Concentrations adopted from the Wisconsin Bureau of Environmental and Occupational Health Department of Health and Family Services "Health-based Guidelines for Air Management, Public Participation, and Risk Communication During the Excavation of Former Manufactured Gas Plants." Naphthalene concentration is DHFS-derived for 14-day acute exposure, and all other parameters are U.S. EPA reference concentrations (RfC) for lifetime exposure.
3. Non-detections were treated as 1/2 the detection limit.

Lab comments and definitions can be found in associated laboratory reports.

Table 2 - August 2019 Sediment Sample Results Summary

Wisconsin Public Service Corporation
 Green Bay Former Manufactured Gas Plant Site 700 N Adams St, Green Bay, Wisconsin
 BRRTS#: 02-05-000254 UPSEPA#: WIN000509948

9-digit Code	Sample Location	Sample Depth (feet)	Sample Date	PAH	PAH	PAH	PAH	PAH	PAH	PAH	PAH	PAH	PAH	PAH	PAH	PAH	PAH	PAH	PAH	PAH																			
				TPAH(13) ¹	2-Methylnaphthalene	Acenaphthene	Acenaphthylene	Anthracene	Benzo(a)anthracene	Benzo(a)pyrene	Benzo(b)fluoranthene	Benzo(g,h,i)perylene	Benzo(k)fluoranthene	Chrysene	Dibenz(a,h)anthracene	Fluoranthene	Fluorene	Indeno(1,2,3-cd)pyrene	Naphthalene	Phenanthrene	Pyrene																		
				mg/kg	mg/kg	mg/kg	mg/kg	mg/kg	mg/kg	mg/kg	mg/kg	mg/kg	mg/kg	mg/kg	mg/kg	mg/kg	mg/kg	mg/kg	mg/kg	mg/kg	mg/kg	mg/kg	mg/kg																
Reporting Units:				Result	Flag	Result	Flag	Result	Flag	Result	Flag	Result	Flag	Result	Flag	Result	Flag	Result	Flag	Result	Flag																		
080919068	GB-NFA-PC-011	0 - 0.5	08/09/2019	0.1975		0.0101	J	0.0111	J	0.0070	J	0.0107	J	0.010	J	0.0081	J	0.0086	J	0.0034	J	0.0052	J	0.0095	J	0.0031	U	0.0168	J	0.0057	J	0.0030	U	0.0705		0.0175	J	0.0168	J
080919069	GB-NFA-PC-011	0.5 - 1.5	08/09/2019	0.1178		0.0066	U	0.0051	U	0.0044	U	0.0075	U	0.0042	U	0.0033	U	0.0037	U	0.0027	U	0.0033	U	0.0045	U	0.0030	U	0.0069	U	0.0055	U	0.0029	U	0.0829		0.0154	U	0.0060	U
080619001	GB-NFA-PC-012	0 - 0.5	08/06/2019	1.4468		0.309		0.240		0.0261		0.128		0.0587		0.0608		0.0555		0.0351		0.0256		0.0585		0.0086	J	0.134		0.114		0.0277		0.0826		0.322		0.141	
080919066	GB-NFA-PC-013	0 - 0.5	08/09/2019	0.1002		0.0068	U	0.0053	U	0.0045	U	0.0078	U	0.0049	J	0.0047	J	0.0041	J	0.0028	U	0.0034	U	0.0046	U	0.0030	U	0.0071	U	0.0056	U	0.0030	U	0.0525		0.0159	U	0.0069	J
080919067	GB-NFA-PC-013	0.5 - 1.5	08/09/2019	1.2558		0.104		0.0386		0.0091	U	0.0157	U	0.0087	U	0.0069	U	0.0078	U	0.0056	U	0.0069	U	0.0093	U	0.0061	U	0.0143	U	0.0114	U	0.0060	U	1.150		0.0320	U	0.0124	U
080619002	GB-NFA-PC-014	0 - 0.5	08/06/2019	7.964		0.828		0.637		0.141		0.403		0.510		0.508		0.585		0.211		0.175		0.508		0.0560		0.947		0.320		0.178		1.030		1.370		0.830	
080619003	GB-NFA-PC-014	0.5 - 1.5	08/06/2019	65.302		1.950		1.260		1.270		3.920		8.150		7.690		13.100		3.720		4.930		8.240		1.360		4.710		3.180		3.700		3.090		4.040		4.120	
080619004	GB-NFA-PC-014	1.5 - 2.5	08/06/2019	64.521		9.750		6.670		0.607		3.940		2.470		1.720		1.890		0.851		0.884		2.870		0.246	J	6.080		3.782		0.639		14.800		13.700		5.710	
080619005	GB-NFA-PC-014	2.5 - 3.5	08/06/2019	454.17		92.300		36.400		3.030	J	19.600		7.390		5.800		4.740		2.790		2.380	J	7.430		0.915	U	14.800		14.800		2.110	J	280.000		40.700		17.100	
080619006	GB-NFA-PC-014 Dup	2.5 - 3.5	08/06/2019	599.36		111.000		47.000		4.760	J	29.400		11.200		9.270		7.440		4.210		3.790		11.300		1.000	U	23.400		20.400		3.220	J	344.000		60.700		26.700	
080619007	GB-NFA-PC-014	3.5 - 4.2	08/06/2019	2311.4		496.000		257.000		24.800		156.000		58.400		44.900		35.900		20.100		17.100	J	56.300		4.820	U	118.000		114.000		15.200	J	975.000		323.000		131.000	
080619008	GB-NFA-PC-014	4.2 - 4.7	08/06/2019	22.723		1.660	J	0.401	U	0.340	U	0.590	U	0.327	U	0.259	U	0.292	U	0.210	U	0.259	U	0.348	U	0.231	U	0.538	U	0.427	U	0.227	U	20.000		1.200	U	0.466	U
080919063	GB-NFA-PC-015	0 - 0.7	08/09/2019	2.8175		0.206		0.283		0.0924		0.202		0.182		0.198		0.187		0.108		0.0921		0.178		0.0257		0.272		0.135		0.0871		0.254		0.467		0.275	
080919064	GB-NFA-PC-015	0.7 - 1.2	08/09/2019	0.192		0.0142	J	0.0297		0.0047	U	0.0113	J	0.0095	J	0.0074	J	0.0080	J	0.0029	U	0.0037	J	0.0083	J	0.0032	U	0.0178	J	0.0110	J	0.0031	U	0.0345	J	0.0298	J	0.0187	J
080919065	GB-NFA-PC-015	1.2 - 2.2	08/09/2019	0.0512		0.0088	J	0.0058	J	0.0043	U	0.0075	U	0.0042	U	0.0033	U	0.0037	U	0.0027	U	0.0033	U	0.0044	U	0.0029	U	0.0069	U	0.0055	U	0.0029	U	0.0132	J	0.0154	U	0.0059	U
080619009	GB-NFA-PC-016	0 - 0.5	08/06/2019	15.2		0.500		0.502		0.324		0.626		1.290		1.460		1.620		0.797		0.670		1.290		0.188		2.460		0.360		0.665		0.748		2.080		1.770	
080619010	GB-NFA-PC-016	0.5 - 1.5	08/06/2019	3.2059		0.246		0.182		0.0807		0.116		0.197		0.234		0.263		0.124		0.0992		0.216		0.0314		0.375		0.107		0.106		0.524		0.477		0.335	
080619011	GB-NFA-PC-016	1.5 - 2.5	08/06/2019	7.082		0.413		0.274		0.160		0.235		0.533		0.653		0.705		0.250		0.312		0.571		0.0679		0.892		0.170		0.243		1.000		0.811		0.766	
080619012	GB-NFA-PC-016	2.5 - 3.5	08/06/2019	9.542		1.100		0.479		0.291		0.424		0.552		0.708		0.681		0.418		0.287		0.593		0.0999		0.949		0.276		0.313		2.160		1.280		0.862	
080619013	GB-NFA-PC-016	3.5 - 4.5	08/06/2019	10.569		1.310		0.682		0.235		0.475		0.601		0.656		0.663		0.415		0.269		0.623		0.0925		1.100		0.365		0.315		2.250		1.640		1.010	
080619014	GB-NFA-PC-016	4.5 - 5.5	08/06/2019	28.455		3.540		1.630		0.526		1.530		1.280		1.280		1.180		0.824		0.568		1.340		0.186	J	2.590		0.911		0.616		8.650		4.450		2.520	
080619015	GB-NFA-PC-016	5.5 - 6.8	08/06/2019	1680.79		371.000		178.000		7.360	J	85.200		20.000		14.400		11.900	J	6.790	J	5.630	J	20.700		3.020	U	51.700		63.300		5.640	J	994.000		168.000		60.600	
080619016	GB-NFA-PC-016 Dup	5.5 - 6.8	08/06/2019	2263		468.000		218.000		19.200	J	110.000		46.000	J	35.000	J	28.400	J	19.100	J	16.300	J	53.200	J	11.600	U	74.700	J	77.400		14.200	J	1,310		188.000	J	86.800	
080619017	GB-NFA-PC-016	6.8 - 7.3	08/06/2019	11.1423		1.810		0.506		0.161	J	0.194	U	0.108	U	0.0854	U	0.0960	U	0.0691	U	0.0853	U	0.115	U	0.0760	U	0.177	U	0.141	U	0.0748	U	9.700		0.396	U	0.153	U
080919061	GB-NFA-PC-017	0 - 0.5	08/09/2019	0.7338		0.0133	J	0.0262		0.0147		0.0340		0.0642		0.0548		0.0676		0.0166		0.0290		0.0523		0.0045	J	0.135		0.0131	J	0.0174		0.0680		0.0679		0.107	
080919062	GB-NFA-PC-017	0.5 - 1.5	08/09/2019	0.1715		0.0086	J	0.0152	J	0.0043	U	0.0127	J	0.0110	J	0.0091	J	0.0104	J	0.0035	J	0.0058	J	0.0097	J	0.0029	U	0.0213	J	0.0065	J	0.0032	J	0.0258	J	0.0245	J	0.0174	J
080619018	GB-NFA-PC-018	0 - 0.5	08/06/2019	1.6553		0.111		0.0831		0.0413		0.0912		0.110		0.140		0.153		0.100		0.0715		0.147		0.0211	J	0.261		0.0474	J	0.0756		0.0908	J	0.220		0.199	
080619019	GB-NFA-PC-018	0.5 - 1.5	08/06/2019	18.064		0.707		0.346		0.774		0.786		1.840		1.720		1.930		0.963		0.601		1.990		0.293		2.630		0.307		0.706		1.000		1.610		2.530	
080619020	GB-NFA-PC-018	1.5 - 2.5	08/06/2019	9.885		0.578		0.251		0.197		0.390		0.709		0.765		0.904		0.486		0.344		0.793		0.120		1.500		0.192		0.407		1.630		1.070		1.140	
080619021	GB-NFA-PC-018	2.5 - 3.5	08/06/2019	29.882		2.780		2.160		0.563		1.540		1.710		1.730		1.840		1.020		0.519		1.680		0.233		3.470		1.110		0.785		5.090		5.240		3.230	
080619022	GB-NFA-PC-018	3.5 - 4.5	08/06/2019	14.468		1.620		1.020		0.239		0.847		0.791		0.800		0.800		0.442		0.307		0.752		0.107		1.640		0.522		0.336		2.700		2.500		1.550	
080619023	GB-NFA-PC-018	4.5 - 5.5	08/06/2019	4.684		0.236		0.202		0.126		0.215		0.343		0.479		0.497		0.256		0.167		0.359		0.0676		0.567		0.129		0.207		0.502		0.587		0.511	
080619024	GB-NFA-PC-018	5.5 - 6.5	08/06/2019	10.513		0.872		0.416		0.230		0.475		0.762		0.808		0.946		0.532		0.347		0.816		0.116		1.450		0.283		0.370		1.600		1.270		1.110	
080619025	GB-NFA-PC-018	6.5 - 7.5	08/06/2019	178.57		22.400		11.600		2.340		12.600		7.510		6.350		5.820		3.620		2.660		6.900		0.737	J	15.300		6.090		2.710		56.300		29.500		15.600	
080619026	GB-NFA-PC-018	7.5 - 8	08/06/2019	168.72		31.400		12.900		1.820	J	7.790		4.750		4.290		3.730		2.320		2.040		5.340		0.533	J	7.440		6.040		1.770	</						

Table 2 - August 2019 Sediment Sample Results Summary

Wisconsin Public Service Corporation
 Green Bay Former Manufactured Gas Plant Site 700 N Adams St, Green Bay, Wisconsin
 BRRTS#: 02-05-000254 UPSEPA#: WIN000509948

9-digit Code	Sample Location	Sample Depth (feet)	Sample Date	PAH	PAH	PAH	PAH	PAH	PAH	PAH	PAH	PAH	PAH	PAH	PAH	PAH	PAH	PAH	PAH	PAH																			
				TPAH(13) ¹	2-Methylnaphthalene	Acenaphthene	Acenaphthylene	Anthracene	Benzo(a)anthracene	Benzo(a)pyrene	Benzo(b)fluoranthene	Benzo(g,h,i)perylene	Benzo(k)fluoranthene	Chrysene	Dibenz(a,h)anthracene	Fluoranthene	Fluorene	Indeno(1,2,3-cd)pyrene	Naphthalene	Phenanthrene	Pyrene																		
				mg/kg	mg/kg	mg/kg	mg/kg	mg/kg	mg/kg	mg/kg	mg/kg	mg/kg	mg/kg	mg/kg	mg/kg	mg/kg	mg/kg	mg/kg	mg/kg	mg/kg	mg/kg	mg/kg																	
Reporting Units:				Result	Flag	Result	Flag	Result	Flag	Result	Flag	Result	Flag	Result	Flag	Result	Flag	Result	Flag	Result	Flag																		
080719029	GB-NFA-PC-020	0 - 0.5	08/07/2019	72.73		8.050		5.240		1.160		4.120		3.090		3.130		3.190		2.030		1.260		2.910		0.416		7.730		2.460		1.450		19.300		12.400		6.740	
080719030	GB-NFA-PC-020	0.5 - 1.5	08/07/2019	208.82		26.600		17.600		2.290		13.600		9.550		8.920		9.170		4.950		4.020		9.970		1.100	J	21.600		8.700		4.060		47.300		35.800		20.300	
080719031	GB-NFA-PC-020	1.5 - 2.5	08/07/2019	153.32		27.100		10.900		1.020	J	6.070		2.890		2.500		2.500		1.530	J	1.430	J	3.550		0.510	U	6.480		4.270		1.140	J	91.600		13.600		6.510	
080719032	GB-NFA-PC-020	2.5 - 3.5	08/07/2019	2596.5		669.000		278.000		20.600		131.000		41.200		29.400		24.200		12.800		14.200	J	47.300		3.810	U	90.600		118.000		9.810	J	1,380		295.000		127.000	
080719033	GB-NFA-PC-020 Dup	2.5 - 3.5	08/07/2019	990.5		238.000		88.500		4.630	J	42.500		9.700	J	5.770	J	5.420	J	2.760	J	3.380	J	12.300	J	2.600	U	25.000		36.700		2.560	U	642.000		85.700		28.900	
080719034	GB-NFA-PC-020	3.5 - 4.5	08/07/2019	4825.2		1,080		472.000		125.000		196.000		80.800		59.500		38.400		16.600	J	41.500		85.000		8.180	U	191.000		264.000		13.200	J	2,440		618.000		214.000	
080719035	GB-NFA-PC-020	4.5 - 5	08/07/2019	156.33		37.800		14.200		3.080		8.230		2.320		1.610	J	1.630	J	0.879	J	1.040	J	3.230		0.474	U	5.710		6.240		0.762	J	87.500		15.000		6.540	
080819056	GB-NFA-PC-021	0 - 0.5	08/08/2019	0.0802		0.0113	J	0.0060	J	0.0044	U	0.0076	U	0.0042	U	0.0033	U	0.0037	U	0.0027	U	0.0033	U	0.0045	U	0.0030	U	0.0069	U	0.0055	U	0.0029	U	0.0418		0.0154	U	0.0060	U
080819057	GB-NFA-PC-021	0.5 - 1.5	08/08/2019	0.0466		0.0065	U	0.0051	U	0.0043	U	0.0075	U	0.0041	U	0.0033	U	0.0037	U	0.0027	U	0.0033	U	0.0044	U	0.0029	U	0.0068	U	0.0054	U	0.0029	U	0.0121	J	0.0152	U	0.0059	U
080819058	GB-NFA-PC-021 Dup	0.5 - 1.5	08/08/2019	0.0154	U	0.0066	U	0.0051	U	0.0044	U	0.0075	U	0.0042	U	0.0033	U	0.0037	U	0.0027	U	0.0033	U	0.0045	U	0.0030	U	0.0069	U	0.0055	U	0.0029	U	0.0111	U	0.0154	U	0.0060	U
080719036	GB-NFA-PC-022	0 - 0.5	08/07/2019	72.62		11.100		7.930		1.260		4.530		2.990		2.630		2.390		1.440		1.130		2.690		0.319		6.120		3.560		1.140		18.800		12.200		6.390	
080719037	GB-NFA-PC-022	0.5 - 1.5	08/07/2019	5033.1		1,080		646.000		53.900		290.000		133.000		106.000		82.700		43.400		36.500		127.000		8.340	J	279.000		284.000		33.400		1,830		828.000		337.000	
080719038	GB-NFA-PC-022	1.5 - 2.5	08/07/2019	6595.9		1,480		745.000		46.500	J	358.000		103.000		68.300		58.700		22.900	J	30.400	J	109.000		10.300	U	261.000		284.000		19.200	J	3,480		763.000		289.000	
080719039	GB-NFA-PC-022	2.5 - 3	08/07/2019	186.46		37.900		18.700		3.070		11.300		3.380		2.310		2.070	J	0.546	U	1.070	J	3.290		0.601	U	7.440		8.140		0.591	U	93.500		23.700		8.490	
080819054	GB-NFA-PC-023	0 - 0.5	08/08/2019	1.2964		0.0532		0.0597		0.0182		0.102		0.0943		0.0932		0.0985		0.0599		0.0407		0.0869		0.0142		0.211		0.0360		0.0500		0.0989		0.202		0.155	
080819055	GB-NFA-PC-023	0.5 - 1.5	08/08/2019	0.0149	U	0.0064	U	0.0050	U	0.0042	U	0.0073	U	0.0041	U	0.0032	U	0.0036	U	0.0026	U	0.0032	U	0.0043	U	0.0029	U	0.0067	U	0.0053	U	0.0028	U	0.0108	U	0.0149	U	0.0058	U
080719040	GB-NFA-PC-024	0 - 0.5	08/07/2019	487.19		102.000		50.300		8.380		27.000		11.700		9.330		8.240		3.360		3.640	J	12.100		1.020	U	23.900		22.000		2.740	J	223.000		60.100		27.500	
080719041	GB-NFA-PC-024	0.5 - 0.9	08/07/2019	2563.2		565.000		259.000		47.800		114.000		48.800		32.500	J	31.300	J	14.200	J	15.400	J	57.400		9.500	U	114.000		138.000		10.300	J	1,250		333.000		122.000	
080719042	GB-NFA-PC-024	0.9 - 1.4	08/07/2019	199.17		40.800		20.300		2.930		11.500		3.520		2.360		2.070	J	0.960	J	1.050	J	4.140		0.568	U	8.500		7.750		0.739	J	103.000		22.600		9.450	
080819052	GB-NFA-PC-025	0 - 0.5	08/08/2019	14.677		0.664		0.814		0.202		0.749		1.150		1.210		1.300		0.763		0.553		1.020		0.157		2.280		0.479		0.634		1.100		2.060		1.760	
080819053	GB-NFA-PC-025	0.5 - 1.5	08/08/2019	0.6388		0.0590		0.0536		0.0080	J	0.0376		0.0368		0.0364		0.0356		0.0266		0.0171		0.0359		0.0046	J	0.0913		0.0260		0.0194		0.0878		0.101		0.0717	
080719043	GB-NFA-PC-026	0 - 0.7	08/07/2019	1109.85		261.000		114.000		10.500		54.900		17.400		12.500		10.500		5.930		5.050	J	18.900		1.800	U	39.200		47.400		4.540	J	615.000		121.000		43.500	
080719044	GB-NFA-PC-026	0.7 - 1.2	08/07/2019	23.67		3.210		1.090		0.222	U	0.629	J	0.248	J	0.170	U	0.191	U	0.137	U	0.169	U	0.228	U	0.151	U	0.385	J	0.367	J	0.148	U	19.000		1.050	J	0.411	J
080819050	GB-NFA-PC-027	0 - 0.5	08/08/2019	6.0738		1.100		0.705		0.0783		0.348		0.211		0.201		0.167		0.120		0.0865		0.194		0.0248		0.433		0.296		0.0934		1.930		0.946		0.478	
080819051	GB-NFA-PC-027	0.5 - 1.5	08/08/2019	1.7221		0.224		0.177		0.0262		0.135		0.0735		0.0779		0.0676		0.0500		0.0299		0.0742		0.0111		0.158		0.0798		0.0406		0.367		0.301		0.155	
080719045	GB-NFA-PC-028	0 - 0.5	08/07/2019	1.8482		0.356		0.118		0.0239	J	0.0603	J	0.0169	U	0.0134	U	0.0151	U	0.0108	U	0.0134	U	0.0180	U	0.0119	U	0.0278	U	0.0430	J	0.0117	U	1.420		0.103	J	0.0277	J
080719046	GB-NFA-PC-028 Dup	0 - 0.5	08/07/2019	7.2992		1.460		0.626		0.0842	J	0.287		0.0806	J	0.0465	J	0.0400	J	0.0268	U	0.0331	U	0.0934	J	0.0295	U	0.170	J	0.246		0.0290	U	4.850		0.550		0.209	
080719047	GB-NFA-PC-029	0 - 0.9	08/07/2019	11.76		1.040		1.260		0.224		0.899		0.671		0.719		0.655		0.385		0.345		0.628		0.0810		1.400		0.584		0.325		0.865		2.190		1.320	
080719048	GB-NFA-PC-029	0.9 - 1.4	08/07/2019	1.1213		0.0916		0.108		0.0142	J	0.0955		0.0619		0.0540		0.0529		0.0299		0.0257		0.0657		0.0076	J	0.140		0.0514		0.0239		0.103		0.209		0.140	
080719049	GB-NFA-PC-029	1.4 - 2.4	08/07/2019	0.1121		0.0145	J	0.0133	J	0.0043	U	0.0093	J	0.0046	J	0.0035	J	0.0038	J	0.0027	U	0.0033	U	0.0044	U	0.0029	U	0.0074	J	0.0054	U	0.0029	U	0.0357	J	0.0191	J	0.0067	J
080919070	GB-SFA-PC-030	0 - 0.5	08/09/2019	11.837		0.714		0.708		0.166		0.980		0.642		0.673		0.695		0.411		0.319		0.652		0.0793		1.570		0.482		0.341		1.640		2.000		1.310	
080919071	GB-SFA-PC-030	0.5 - 1	08/09/2019	13.621		0.136	J	1.180		0.116		0.736		0.771		0.933		0.779		0.618		0.689		0.786		0.156		2.260		0.636		0.516		0.635		2.670		1.430	
080919072	GB-SFA-PC-030	1 - 1.5	08/09/2019	13.354		0.203		0.889		0.113		0.898		0.677		0.778		0.811		0.465		0.425		0.727		0.119		2.030		0.536		0.394		1.810		2.390		1.270	
080919073	GB-SFA-PC-030 Dup	1 - 1.5	08/09/2019	8.8203		0.322		0.687		0.0543	J	0.486		0.326		0.341		0.334		0.210		0.216		0.331		0.0436	J	1.100		0.394		0.173		2.290		1.560		0.701	
081219079	GB-SFA-PC-031B	0 - 0.5	08/12/2019	0.6244		0.0568		0.0324		0.0084	J	0.0359		0.0222		0.0220		0.0212		0.0																			

Table 2 - August 2019 Sediment Sample Results Summary

Wisconsin Public Service Corporation
 Green Bay Former Manufactured Gas Plant Site 700 N Adams St, Green Bay, Wisconsin
 BRRTS#: 02-05-000254 UPSEPA#: WIN000509948

9-digit Code	Sample Location	Sample Depth (feet)	Sample Date	PAH		PAH		PAH		PAH		PAH		PAH		PAH		PAH		PAH		PAH		PAH															
				TPAH(13) ¹		2-Methylnaphthalene		Acenaphthene		Acenaphthylene		Anthracene		Benzo(a)anthracene		Benzo(a)pyrene		Benzo(b)fluoranthene		Benzo(g,h,i)perylene		Benzo(k)fluoranthene		Chrysene		Dibenz(a,h)anthracene		Fluoranthene		Fluorene		Indeno(1,2,3-cd)pyrene		Naphthalene		Phenanthrene		Pyrene	
				mg/kg	Flag	mg/kg	Flag	mg/kg	Flag	mg/kg	Flag	mg/kg	Flag	mg/kg	Flag	mg/kg	Flag	mg/kg	Flag	mg/kg	Flag	mg/kg	Flag	mg/kg	Flag	mg/kg	Flag	mg/kg	Flag	mg/kg	Flag	mg/kg	Flag	mg/kg	Flag	mg/kg	Flag		
081219095	GB-SFA-PC-033	0 - 0.6	08/12/2019	0.0123	U	0.0053	U	0.0041	U	0.0035	U	0.0060	U	0.0034	U	0.0027	U	0.0030	U	0.0021	U	0.0027	U	0.0036	U	0.0024	U	0.0055	U	0.0044	U	0.0023	U	0.0089	U	0.0123	U	0.0048	U
081219096	GB-SFA-PC-033	0.6 - 1.1	08/12/2019	0.0136	U	0.0058	U	0.0045	U	0.0038	U	0.0067	U	0.0037	U	0.0029	U	0.0033	U	0.0030	J	0.0029	U	0.0039	U	0.0026	U	0.0061	U	0.0048	U	0.0026	U	0.0098	U	0.0136	U	0.0053	U
081219094	GB-SFA-PC-034	0 - 0.5	08/12/2019	3.0284		0.0471	U	0.0365	U	0.0310	U	0.0537	U	0.0298	U	0.0236	U	0.0266	U	0.0191	U	0.0236	U	0.0317	U	0.0210	U	0.0490	U	0.0389	U	0.0207	U	2.780		0.110	U	0.0425	U
081219090	GB-SFA-PC-035	0 - 0.5	08/12/2019	6.4981		0.249		0.175		0.0521		0.178		0.367		0.334		0.333		0.260		0.380		0.478		0.0768		1.130		0.178		0.197		0.899		1.190		0.804	
081219091	GB-SFA-PC-035	0.5 - 1.3	08/12/2019	2.0809		0.0385		0.0455		0.0735		0.0823		0.165		0.148		0.126		0.0990		0.187		0.199		0.0335		0.308		0.0570		0.0821		0.0856		0.305		0.299	
081219092	GB-SFA-PC-035 Dup	0.5 - 1.3	08/12/2019	0.6302		0.0190	J	0.0187		0.0161		0.0304		0.0419		0.0256		0.0270		0.0329		0.0405		0.0568		0.0079	J	0.0922		0.0202		0.0182		0.0613		0.108		0.0915	
081219093	GB-SFA-PC-035	1.3 - 1.8	08/12/2019	0.5994		0.0273		0.0225		0.0110	J	0.0226	J	0.0330		0.0233		0.0306		0.0240		0.0311		0.0468		0.0059	J	0.0839		0.0183		0.0145		0.105		0.0966		0.0747	
081219087	GB-SFA-PC-036	0 - 0.5	08/12/2019	2.52		0.0993		0.0556		0.0256	J	0.0487	J	0.0745		0.203		0.127		0.579		0.102		0.146		0.210		0.0316	J	0.146		1.180		0.153		0.172			
081219088	GB-SFA-PC-036	0.5 - 1.2	08/12/2019	40.0609		0.262	J	0.850		0.0818	U	2.050		2.800		2.800		2.690		1.790		2.660		3.170		0.543		8.230		1.080		1.460		1.020		7.680		4.990	
081219089	GB-SFA-PC-036	1.2 - 1.7	08/12/2019	0.0936		0.0074	J	0.0052	J	0.0040	U	0.0070	U	0.0039	U	0.0037	J	0.0042	J	0.0124		0.0031	U	0.0094	J	0.0027	U	0.0094	J	0.0051	U	0.0027	U	0.0213	J	0.0195	J	0.0094	J
081219084	GB-SFA-PC-037	0 - 0.5	08/12/2019	0.6735		0.0119	J	0.0170		0.0073	J	0.0189	J	0.0390		0.0451		0.0525		0.0369		0.0531		0.0614		0.0093		0.131		0.0137	J	0.0271		0.0493		0.0832		0.102	
081219085	GB-SFA-PC-037	0.5 - 1.2	08/12/2019	0.7766		0.0564		0.0676		0.0129	J	0.0508		0.0338		0.0338		0.0303		0.0165		0.0291		0.0410		0.0041	J	0.0807		0.0390		0.0128		0.149		0.137		0.0716	
081219086	GB-SFA-PC-037	1.2 - 1.7	08/12/2019	0.0588		0.0090	J	0.0054	U	0.0046	U	0.0079	U	0.0044	U	0.0035	U	0.0039	U	0.0067	J	0.0035	U	0.0049	J	0.0031	U	0.0072	U	0.0057	U	0.0030	U	0.0197	J	0.0161	U	0.0062	U
081219076	GB-SFA-PC-038B	0 - 0.5	08/12/2019	1.4262		0.0193	U	0.0150	U	0.0127	U	0.0330	J	0.0961		0.117		0.190		0.104		0.102		0.159		0.0172	J	0.342		0.0160	U	0.0807		0.0325	U	0.128	J	0.221	
081219077	GB-SFA-PC-038B	0.5 - 1.5	08/12/2019	0.2792		0.0104	J	0.0129	J	0.0041	U	0.0071	U	0.0157		0.0163		0.0249		0.0138		0.0135		0.0259		0.0028	U	0.0565		0.0094	J	0.0102		0.0171	J	0.0395	J	0.0419	
081219078	GB-SFA-PC-038B	1.5 - 2	08/12/2019	0.039		0.0060	U	0.0047	U	0.0040	U	0.0069	U	0.0038	U	0.0030	U	0.0034	U	0.0045	J	0.0030	U	0.0042	J	0.0027	U	0.0063	U	0.0050	U	0.0026	U	0.0101	U	0.0140	U	0.0054	U
080919074	GB-SFA-PC-039	0 - 0.7	08/09/2019	7.218		0.470		0.488		0.129		0.268		0.537		0.578		0.652		0.340		0.261		0.469		0.0775		1.260		0.245		0.305		0.345		1.080		0.906	
080919075	GB-SFA-PC-039	0.7 - 1.2	08/09/2019	29.821		1.860		1.270		0.172	U	0.490	J	0.323	J	0.230	J	0.229	J	0.127	J	0.249	J	0.378	J	0.117	U	0.838	J	0.611	J	0.115	U	23.100		1.440	J	0.577	J
Total Number of Samples Analyzed:				96		96		96		96		96		96		96		96		96		96		96		96		96		96		96		96		96		96	
Number of Detections:				92		86		83		69		75		78		78		78		74		74		78		48		78		74		67		90		79		80	
Min:				0.039		0.0074		0.0052		0.007		0.0093		0.0046		0.0034		0.0038		0.003		0.0037		0.0042		0.0041		0.0074		0.0057		0.0032		0.0121		0.0175		0.0067	
Max:				6,596		1,480		745		125		358		133		106		82.7		43.4		41.5		127		8.34		279		284		33.4		3,480		828		337	

Notes:

Sorted by 9-digit Code

-- = Analysis not performed

% = percent

Dup = Quality Control Field Duplicate Sample

GEO = Geotechnical Property

J = Estimated concentration

mg/kg = milligrams per kilogram

PAH = Polycyclic Aromatic Hydrocarbon

PVOC = Petroleum Volatile Organic Compound

TPAH = Total PAHs

U = Concentration was not detected above the reported limit

- The following rules apply to the summation of Total PAH (13) calculated by OBG, Part of Ramboll:
 - Where no detections were observed, the maximum individual reported detection limit is presented.
 - Where detections were observed, ½ the reported detection limit for non-detects was used in the summation.
 - The list of Total PAH (13) is as follows: Acenaphthene, Acenaphthylene, Anthracene, Benzo(a)anthracene, Benzo(a)pyrene, Benzo(b)fluoranthene, Benzo(k)fluoranthene, Chrysene, Fluoranthene, Fluorene, Naphthalene, Phenanthrene and Pyrene.

August 2019 data has not been validated.

Lab comments and definitions can be found in associated laboratory reports.

Table 2 - August 2019 Sediment Sample Results Summary

Wisconsin Public Service Corporation
 Green Bay Former Manufactured Gas Plant Site 700 N Adams St, Green Bay, Wisconsin
 BRRTS#: 02-05-000254 UPSEPA#: WIN000509948

9-digit Code	Sample Location	Sample Depth (feet)	Sample Date	PVOC		PVOC		PVOC		PVOC		PVOC		PVOC		Phenol		Phenol		Phenol		Phenol		Inorganic		Inorganic		Inorganic					
				1,2,4-Trimethylbenzene		1,3,5-Trimethylbenzene		Benzene		Ethylbenzene		Toluene		Xylene, o		Xylenes, m + p		Xylenes, Total		2,4-Dimethylphenol		2-Methylphenol		3 & 4-Methylphenol		Phenol		Nitrogen, Ammonia, Total		Nitrogen, Kjeldahl, Total		Phosphorus, Total	
				mg/kg	Flag	mg/kg	Flag	mg/kg	Flag	mg/kg	Flag	mg/kg	Flag	mg/kg	Flag	mg/kg	Flag	mg/kg	Flag	mg/kg	Flag	mg/kg	Flag	mg/kg	Flag	mg/kg	Flag	mg/kg	Flag	mg/kg	Flag	mg/kg	Flag
080919068	GB-NFA-PC-011	0 - 0.5	08/09/2019	0.173		0.0489	J	0.0857		0.927		0.0250	U	0.187		0.143	J	0.330		0.0450	U	0.0413	U	0.0417	U	0.0540	U	--		--		--	
080919069	GB-NFA-PC-011	0.5 - 1.5	08/09/2019	0.0250	U	0.0250	U	0.0250	U	0.0250	U	0.0250	U	0.0250	U	0.0500	U	0.0750	U	0.0436	U	0.0400	U	0.0404	U	0.0523	U	--		--		--	
080619001	GB-NFA-PC-012	0 - 0.5	08/06/2019	1.650		0.0250	U	0.0250	U	0.0250	U	0.0250	U	0.0250	U	0.0500	U	0.0750	U	0.0458	U	0.0421	U	0.0424	U	0.0550	U	--		--		--	
080919066	GB-NFA-PC-013	0 - 0.5	08/09/2019	0.0857		0.0250	U	0.127		0.478		0.0250	U	0.201		0.0827	J	0.284		0.0449	U	0.0413	U	0.0416	U	0.0539	U	--		--		--	
080919067	GB-NFA-PC-013	0.5 - 1.5	08/09/2019	1.240		0.324	J	0.160	J	2.410		0.100	U	0.608		0.200	U	0.781	J	0.0453	U	0.0416	U	0.0420	U	0.0544	U	--		--		--	
080619002	GB-NFA-PC-014	0 - 0.5	08/06/2019	8.910		2.980		0.0532	U	0.0532	U	0.0532	U	0.0532	U	0.231	J	0.322	J	0.317	U	0.291	U	0.294	U	0.380	U	--		--		--	
080619003	GB-NFA-PC-014	0.5 - 1.5	08/06/2019	10.200		2.580		0.0250	U	0.0250	U	0.0250	U	0.121	J	0.128	J	0.249	J	0.744	U	0.683	U	0.689	U	0.893	U	--		--		--	
080619004	GB-NFA-PC-014	1.5 - 2.5	08/06/2019	16.900		5.830		1.810		0.563		0.0510	U	0.435		0.425	J	0.860		0.712	J	0.271	U	0.273	U	0.354	U	--		--		--	
080619005	GB-NFA-PC-014	2.5 - 3.5	08/06/2019	9.510		3.420		15.900		34.700		0.500	U	9.970		19.700		29.700		2.030	U	1.860	U	1.880	U	2.440	U	--		--		--	
080619006	GB-NFA-PC-014 Dup	2.5 - 3.5	08/06/2019	8.570		2.760	J	15.600		32.300		0.526	U	9.550		18.100		27.600		2.210	U	2.030	U	2.050	U	2.650	U	--		--		--	
080619007	GB-NFA-PC-014	3.5 - 4.2	08/06/2019	27.200		8.280	J	11.800	J	55.800		5.000	U	16.100	J	37.300		53.400		3.790	U	3.480	U	3.510	U	4.540	U	--		--		--	
080619008	GB-NFA-PC-014	4.2 - 4.7	08/06/2019	2.790	J	1.000	U	6.420		13.200		1.720	J	3.490		7.200		10.700		0.170	U	0.157	U	0.158	U	0.205	U	--		--		--	
080919063	GB-NFA-PC-015	0 - 0.7	08/09/2019	0.0250	U	0.0250	U	0.0250	U	0.142		0.0885	J	0.0250	U	0.0500	U	0.0750	U	0.0731	U	0.0672	U	0.132	J	0.0877	U	--		--		--	
080919064	GB-NFA-PC-015	0.7 - 1.2	08/09/2019	0.0250	U	0.0250	U	0.0250	U	0.0250	U	0.0250	U	0.0250	U	0.0500	U	0.0750	U	0.0467	U	0.0429	U	0.0433	U	0.0561	U	--		--		--	
080919065	GB-NFA-PC-015	1.2 - 2.2	08/09/2019	0.0250	U	0.0250	U	0.0250	U	0.0250	U	0.0250	U	0.0250	U	0.0500	U	0.0750	U	0.0434	U	0.0399	U	0.0402	U	0.0521	U	--		--		--	
080619009	GB-NFA-PC-016	0 - 0.5	08/06/2019	3.050		0.781		0.0342	U	0.0342	U	0.130	J	0.113	J	0.0685	U	0.103	U	0.0899	U	0.0826	U	0.130	J	0.108	U	--		--		--	
080619010	GB-NFA-PC-016	0.5 - 1.5	08/06/2019	1.330		0.196		0.0250	U	0.0693	J	0.306		0.0772	J	0.0500	U	0.0750	U	0.0779	U	0.0715	U	0.296		0.0935	U	--		--		--	
080619011	GB-NFA-PC-016	1.5 - 2.5	08/06/2019	1.990		0.103	J	0.0301	U	0.0301	U	0.163		0.0301	U	0.0602	U	0.0904	U	0.179	J	0.0603	U	1.000		0.0904	J	--		--		--	
080619012	GB-NFA-PC-016	2.5 - 3.5	08/06/2019	5.750		2.150		0.150	J	0.106	J	0.114	J	0.114	J	0.0568	U	0.242	J	0.462	J	0.219	U	0.541	J	0.287	U	--		--		--	
080619013	GB-NFA-PC-016	3.5 - 4.5	08/06/2019	3.430		1.910		0.537		0.524		0.0722	J	0.223		0.381		0.604		0.226	U	0.207	U	0.256	J	0.271	U	--		--		--	
080619014	GB-NFA-PC-016	4.5 - 5.5	08/06/2019	4.460		1.720		0.594		3.860		0.0844	J	1.340		2.200		3.540		0.231	U	0.212	U	0.247	J	0.277	U	--		--		--	
080619015	GB-NFA-PC-016	5.5 - 6.8	08/06/2019	25.500		8.360	J	21.100		89.100		15.800		23.700		53.100		76.800		5.570	U	5.120	U	5.160	U	6.680	U	--		--		--	
080619016	GB-NFA-PC-016 Dup	5.5 - 6.8	08/06/2019	11.200		3.890	J	12.000		46.500		3.080	J	11.600		27.400		39.100		5.350	U	4.910	U	4.950	U	6.420	U	--		--		--	
080619017	GB-NFA-PC-016	6.8 - 7.3	08/06/2019	1.410	J	0.500	U	3.620		5.510		2.780		1.550	J	3.190	J	4.730	J	0.180	U	0.165	U	0.166	U	0.215	U	--		--		--	
080919061	GB-NFA-PC-017	0 - 0.5	08/09/2019	0.0250	U	0.0250	U	0.0250	U	0.0250	U	0.0250	U	0.0250	U	0.0500	U	0.0750	U	0.0435	U	0.0400	U	0.0403	U	0.0522	U	--		--		--	
080919062	GB-NFA-PC-017	0.5 - 1.5	08/09/2019	0.0250	U	0.0250	U	0.0250	U	0.0250	U	0.0250	U	0.0250	U	0.0500	U	0.0750	U	0.0433	U	0.0398	U	0.0401	U	0.0519	U	--		--		--	
080619018	GB-NFA-PC-018	0 - 0.5	08/06/2019	0.193		0.0291	U	0.0291	U	0.0601	J	0.0760	J	0.0291	U	0.0581	U	0.0872	U	0.0598	U	0.0550	U	0.0554	U	0.0718	U	--		--		--	
080619019	GB-NFA-PC-018	0.5 - 1.5	08/06/2019	0.605		0.0258	U	0.0258	U	0.115	J	0.0565	J	0.0898	J	0.0515	U	0.0773	U	0.0693	U	0.0637	U	0.259		0.0832	U	--		--		--	
080619020	GB-NFA-PC-018	1.5 - 2.5	08/06/2019	0.768		0.0255	U	0.0255	U	0.0547	J	0.125		0.0531	J	0.0510	U	0.0765	U	0.0576	U	0.0530	U	0.183		0.0692	U	--		--		--	
080619021	GB-NFA-PC-018	2.5 - 3.5	08/06/2019	2.100		0.116	J	0.128		0.132		0.0812	J	0.0725	J	0.0500	U	0.0750	U	0.204	U	0.187	U	0.253	J	0.245	U	--		--		--	
080619022	GB-NFA-PC-018	3.5 - 4.5	08/06/2019	1.730		0.765		1.160		0.248		0.0709	J	0.187		0.175	J	0.362	J	0.101	J	0.0614	U	0.297		0.0802	U	--		--		--	
080619023	GB-NFA-PC-018	4.5 - 5.5	08/06/2019	0.579		0.0705	J	0.0250	U	0.0496	J	0.0882	J	0.0250	U	0.0500	U	0.0750	U	0.0614	U	0.0564	U	0.125	J	0.0737	U	--		--		--	
080619024	GB-NFA-PC-018	5.5 - 6.5	08/06/2019	1.010		0.0579	J	0.0250	U	0.0544	J	0.0939	J	0.0250	U	0.0500	U	0.0750	U	0.0673	U	0.0618	U	0.164	J	0.0808	U	--		--		--	
080619025	GB-NFA-PC-018	6.5 - 7.5	08/06/2019	1.630		0.628		7.880		2.280		0.130	U	0.785		1.340		2.120		0.173	U	0.159	U	0.329	J	0.207	U	--		--		--	
080619026	GB-NFA-PC-018	7.5 - 8	08/06/2019	3.280		1.300	J	19.700		9.770		0.250	U	3.060		4.980		8.040		0.224	U	0.205	U	0.207	U	0.268	U	--		--		--	
080619027	GB-NFA-PC-018	8 - 8.5	08/06/2019	7.190		3.640	J	16.700		23.800		17.000		6.170		14.600		20.800		2.230	U	2.050	U	2.060	U	2.670	U	--		--		--	
080619028	GB-NFA-PC-018 Dup	8 - 8.5	08/06/2019	9.180		4.180	J	16.900		28.100		19.000		7.490		17.500		25.000		0.897	U	0.824	U	0.831	U	1.080	U	--		--		--	
080819059	GB-NFA-PC-019	0 - 0.5	08/08/2019	0.0250	U	0.0250	U	0.0250	U	0.0250	U																						

Table 2 - August 2019 Sediment Sample Results Summary

Wisconsin Public Service Corporation
 Green Bay Former Manufactured Gas Plant Site 700 N Adams St, Green Bay, Wisconsin
 BRRTS#: 02-05-000254 UPSEPA#: WIN000509948

9-digit Code	Sample Location	Sample Depth (feet)	Sample Date	PVOC		PVOC		PVOC		PVOC		PVOC		PVOC		Phenol		Phenol		Phenol		Phenol		Inorganic		Inorganic		Inorganic					
				1,2,4-Trimethylbenzene		1,3,5-Trimethylbenzene		Benzene		Ethylbenzene		Toluene		Xylene, o		Xylenes, m + p		Xylenes, Total		2,4-Dimethylphenol		2-Methylphenol		3 & 4-Methylphenol		Phenol		Nitrogen, Ammonia, Total		Nitrogen, Kjeldahl, Total		Phosphorus, Total	
				Result	Flag	Result	Flag	Result	Flag	Result	Flag	Result	Flag	Result	Flag	Result	Flag	Result	Flag	Result	Flag	Result	Flag	Result	Flag	Result	Flag	Result	Flag	Result	Flag	Result	Flag
080719029	GB-NFA-PC-020	0 - 0.5	08/07/2019	2.570		0.0532	J	15.300		3.130		0.0583	J	0.186		0.431		0.617		0.209	U	0.192	U	0.194	U	0.251	U	--		--		--	
080719030	GB-NFA-PC-020	0.5 - 1.5	08/07/2019	2.100		0.200	U	16.000		5.380		0.200	U	0.200	U	0.845	J	0.600	U	0.190	U	0.175	U	0.225	J	0.228	U	--		--		--	
080719031	GB-NFA-PC-020	1.5 - 2.5	08/07/2019	2.830		0.915	J	16.200		10.900		0.312	U	2.620		6.230		8.850		0.753	U	0.692	U	0.698	U	0.904	U	--		--		--	
080719032	GB-NFA-PC-020	2.5 - 3.5	08/07/2019	15.200		5.030		68.600		64.900		8.020		16.900		40.600		57.500		2.640	J	2.070	U	2.080	U	2.700	U	--		--		--	
080719033	GB-NFA-PC-020 Dup	2.5 - 3.5	08/07/2019	11.400		4.100	J	50.900		49.900		3.320	J	13.200		30.200		43.500		4.790	U	4.400	U	4.430	U	5.740	U	--		--		--	
080719034	GB-NFA-PC-020	3.5 - 4.5	08/07/2019	62.300		20.400	J	143.000		242.000		213.000		60.700		149.000		209.000		7.460	J	4.190	U	18.800		5.470	U	--		--		--	
080719035	GB-NFA-PC-020	4.5 - 5	08/07/2019	4.930		1.760	J	15.900		18.700		20.500		4.970		10.700		15.700		0.352		0.136	J	0.963		0.143	J	--		--		--	
080819056	GB-NFA-PC-021	0 - 0.5	08/08/2019	0.0250	U	0.0250	U	0.0250	U	0.0250	U	0.0250	U	0.0250	U	0.0500	U	0.0750	U	0.0437	U	0.0402	U	0.0405	U	0.0525	U	--		--		--	
080819057	GB-NFA-PC-021	0.5 - 1.5	08/08/2019	0.0250	U	0.0250	U	0.0250	U	0.0250	U	0.0250	U	0.0250	U	0.0500	U	0.0750	U	0.0432	U	0.0397	U	0.0400	U	0.0518	U	--		--		--	
080819058	GB-NFA-PC-021 Dup	0.5 - 1.5	08/08/2019	0.0250	U	0.0250	U	0.0250	U	0.0250	U	0.0250	U	0.0250	U	0.0500	U	0.0750	U	0.0435	U	0.0400	U	0.0403	U	0.0522	U	--		--		--	
080719036	GB-NFA-PC-022	0 - 0.5	08/07/2019	2.780		0.351	U	16.000		5.460		0.909	J	0.744	J	1.810	J	2.550	J	0.104	J	0.0624	U	0.249		0.0932	J	--		--		--	
080719037	GB-NFA-PC-022	0.5 - 1.5	08/07/2019	25.700		8.490	J	45.000		78.100		19.300		19.700		44.300		64.000		5.230	U	4.810	U	4.850	U	6.280	U	--		--		--	
080719038	GB-NFA-PC-022	1.5 - 2.5	08/07/2019	53.800		16.300	J	119.000		209.000		153.000		59.800		123.000		183.000		7.620	U	7.010	U	15.700	J	9.150	U	--		--		--	
080719039	GB-NFA-PC-022	2.5 - 3	08/07/2019	7.510		2.300	J	16.800		23.100		21.100		6.300		14.600		20.900		0.887	U	0.815	U	0.985	J	1.060	U	--		--		--	
080819054	GB-NFA-PC-023	0 - 0.5	08/08/2019	0.0250	U	0.0250	U	0.0250	U	0.0250	U	0.0250	U	0.0250	U	0.0500	U	0.0750	U	0.0431	U	0.0396	U	0.0399	U	0.0517	U	--		--		--	
080819055	GB-NFA-PC-023	0.5 - 1.5	08/08/2019	0.0250	U	0.0250	U	0.0250	U	0.0250	U	0.0250	U	0.0250	U	0.0500	U	0.0750	U	0.0422	U	0.0388	U	0.0391	U	0.0506	U	--		--		--	
080719040	GB-NFA-PC-024	0 - 0.5	08/07/2019	3.530		0.625	U	7.690		8.390		6.700		1.770	J	4.410	J	6.180	J	0.379	U	0.349	U	0.352	U	0.455	U	--		--		--	
080719041	GB-NFA-PC-024	0.5 - 0.9	08/07/2019	37.500		6.310	U	79.100		131.000		120.000		35.200		82.700		118.000		4.210	U	3.870	U	3.900	U	5.050	U	--		--		--	
080719042	GB-NFA-PC-024	0.9 - 1.4	08/07/2019	3.840		1.250	U	15.700		14.000		15.900		3.720	J	9.090		12.800		0.350		0.179	J	0.398		0.284	J	--		--		--	
080819052	GB-NFA-PC-025	0 - 0.5	08/08/2019	0.239		0.0250	U	0.0250	U	0.170		0.0462	J	0.0444	J	0.0983	J	0.143	J	0.0464	U	0.0426	U	0.0793	J	0.0557	U	--		--		--	
080819053	GB-NFA-PC-025	0.5 - 1.5	08/08/2019	0.0250	U	0.0250	U	0.0348	J	0.0250	U	0.0250	U	0.0250	U	0.0500	U	0.0750	U	0.0419	U	0.0385	U	0.0389	U	0.0503	U	--		--		--	
080719043	GB-NFA-PC-026	0 - 0.7	08/07/2019	14.500		3.120	U	34.400		49.000		30.900		14.800		30.000		44.800		3.210	U	2.950	U	2.970	U	3.850	U	--		--		--	
080719044	GB-NFA-PC-026	0.7 - 1.2	08/07/2019	5.060		1.830	J	13.500		19.700		9.730		5.620		12.400		18.000		0.133	U	0.123	U	0.124	U	0.201	J	--		--		--	
080819050	GB-NFA-PC-027	0 - 0.5	08/08/2019	0.447		0.122		0.0586	J	0.137		0.0250	U	0.0343	J	0.0500	U	0.0750	U	0.0452	U	0.0415	U	0.0419	U	0.0542	U	--		--		--	
080819051	GB-NFA-PC-027	0.5 - 1.5	08/08/2019	0.107		0.0411	J	0.129		0.275		0.0250	U	0.0536	J	0.0500	U	0.104	J	0.0892	U	0.0820	U	0.0827	U	0.107	U	--		--		--	
080719045	GB-NFA-PC-028	0 - 0.5	08/07/2019	3.370	J	1.250	U	8.260		12.300		7.130		2.720	J	7.900	J	10.600	J	0.0440	U	0.0405	U	0.0408	U	0.0634	J	--		--		--	
080719046	GB-NFA-PC-028 Dup	0 - 0.5	08/07/2019	3.080	J	1.000	U	7.890		11.000		7.120		3.060	J	7.000		10.100		0.0435	U	0.0400	U	0.0404	U	0.0523	J	--		--		--	
080719047	GB-NFA-PC-029	0 - 0.9	08/07/2019	0.303	J	0.125	U	0.125	U	0.125	U	0.125	U	0.125	U	0.250	U	0.375	U	0.176	U	0.162	U	0.163	U	0.212	U	--		--		--	
080719048	GB-NFA-PC-029	0.9 - 1.4	08/07/2019	0.488		0.179	J	1.950		1.980		1.230		0.577		1.300		1.880		0.0444	U	0.0408	U	0.0411	U	0.0533	U	--		--		--	
080719049	GB-NFA-PC-029	1.4 - 2.4	08/07/2019	0.0650	J	0.0250	U	0.141		0.207		0.119		0.0525	J	0.138	J	0.191	J	0.0434	U	0.0399	U	0.0402	U	0.0521	U	--		--		--	
080919070	GB-SFA-PC-030	0 - 0.5	08/09/2019	0.0973	J	0.0536	J	0.0250	U	0.0853	J	0.0818	J	0.0250	U	0.0920	J	0.0750	U	0.0580	U	0.0533	U	0.0537	U	0.0696	U	--		--		--	
080919071	GB-SFA-PC-030	0.5 - 1	08/09/2019	0.0250	U	0.0250	U	0.0250	U	0.0250	U	0.0250	U	0.0250	U	0.0500	U	0.0750	U	0.114	U	0.105	U	0.106	U	0.137	U	--		--		--	
080919072	GB-SFA-PC-030	1 - 1.5	08/09/2019	0.973		0.304	J	0.100	U	2.610		0.100	U	0.510		0.284	J	0.794	J	0.0452	U	0.0415	U	0.0419	U	0.0543	U	--		--		--	
080919073	GB-SFA-PC-030 Dup	1 - 1.5	08/09/2019	0.475		0.139		0.0725	J	1.600		0.0250	U	0.279		0.184		0.462		0.0446	U	0.144		0.0413	U	0.0535	U	--		--		--	
081219079	GB-SFA-PC-031B	0 - 0.5	08/12/2019	0.216		0.113	J	0.475		0.260		0.217		0.140	J	0.340		0.480		0.0432	U	0.0397	U	0.0400	U	0.0519	U	51.4		332		586	
081219080	GB-SFA-PC-032	0 - 0.5	08/12/2019	0.0584	J	0.0354	J	0.0306	J	0.118		0.0250	U	0.0424	J	0.105	J	0.147	J	0.0402	U	0.0369	U	0.0372	U	0.0482	U	8.7	U	126		323	
081219081	GB-SFA-PC-032	0.5 - 1.3	08/12/2019	0.0938		0.0469	J	0.0250	U	0.110		0.0250	U	0.0418	J	0.101	J	0.143	J	0.0390	U	0.0358	U	0.0361	U	0.0468	U						

Table 2 - August 2019 Sediment Sample Results Summary

Wisconsin Public Service Corporation
 Green Bay Former Manufactured Gas Plant Site 700 N Adams St, Green Bay, Wisconsin
 BRRTS#: 02-05-000254 UPSEPA#: WIN000509948

9-digit Code	Sample Location	Sample Depth (feet)	Sample Date	PVOC								Phenol				Inorganic																
				1,2,4-Trimethylbenzene	1,3,5-Trimethylbenzene	Benzene	Ethylbenzene	Toluene	Xylene, o	Xylenes, m + p	Xylenes, Total	2,4-Dimethylphenol	2-Methylphenol	3 & 4-Methylphenol	Phenol	Nitrogen, Ammonia, Total	Nitrogen, Kjeldahl, Total	Phosphorus, Total														
				mg/kg	mg/kg	mg/kg	mg/kg	mg/kg	mg/kg	mg/kg	mg/kg	mg/kg	mg/kg	mg/kg	mg/kg	mg/kg	mg/kg	mg/kg	mg/kg													
Reporting Units:				Result	Flag	Result	Flag	Result	Flag	Result	Flag	Result	Flag	Result	Flag	Result	Flag	Result	Flag	Result	Flag	Result	Flag	Result	Flag							
081219095	GB-SFA-PC-033	0 - 0.6	08/12/2019	0.0250	U	0.0250	U	0.0250	U	0.0250	U	0.0250	U	0.0500	U	0.0750	U	0.0349	U	0.0321	U	0.0324	U	0.0419	U	10.2	J	63.7	J	486		
081219096	GB-SFA-PC-033	0.6 - 1.1	08/12/2019	0.0250	U	0.0250	U	0.0250	U	0.0250	U	0.0250	U	0.0500	U	0.0750	U	0.0385	U	0.0354	U	0.0357	U	0.0462	U	8.6	U	186	U	604		
081219094	GB-SFA-PC-034	0 - 0.5	08/12/2019	0.0794	U	0.0250	U	1.420	U	0.582	U	0.134	U	0.295	U	0.908	U	1.200	U	0.308	U	0.0357	U	0.0360	U	0.0466	U	52.9	U	181	U	509
081219090	GB-SFA-PC-035	0 - 0.5	08/12/2019	0.0250	U	0.0250	U	0.0873	J	0.0651	J	0.139	J	0.0250	U	0.0500	U	0.0750	U	0.0770	U	0.0707	U	0.0714	U	0.0924	U	299	U	2,030	U	1,090
081219091	GB-SFA-PC-035	0.5 - 1.3	08/12/2019	0.0526	J	0.0253	U	0.0969	J	0.108	J	0.171	J	0.0253	U	0.115	J	0.157	J	0.0620	U	0.0570	U	0.153	J	0.0744	U	293	U	2,000	U	889
081219092	GB-SFA-PC-035 Dup	0.5 - 1.3	08/12/2019	0.0815	U	0.0250	U	0.0250	U	0.0523	J	0.0627	J	0.0501	J	0.0500	U	0.102	J	0.0403	U	0.0371	U	0.0374	U	0.0484	U	221	U	540	U	847
081219093	GB-SFA-PC-035	1.3 - 1.8	08/12/2019	0.0738	U	0.0250	U	0.0250	U	0.0397	J	0.0324	J	0.0369	J	0.0500	U	0.0750	U	0.0406	U	0.0373	U	0.0377	U	0.0488	U	216	U	485	U	816
081219087	GB-SFA-PC-036	0 - 0.5	08/12/2019	0.160	U	0.0672	J	0.0601	J	0.449	U	0.0624	J	0.0896	U	0.119	J	0.209	J	0.883	U	0.811	U	0.818	U	1.060	U	97.0	U	433	U	352
081219088	GB-SFA-PC-036	0.5 - 1.2	08/12/2019	0.0260	U	0.0260	U	0.0260	U	0.0260	U	0.0349	J	0.0260	U	0.0521	U	0.0781	U	0.816	U	0.750	U	0.756	U	0.980	U	53.7	U	857	U	474
081219089	GB-SFA-PC-036	1.2 - 1.7	08/12/2019	0.0250	U	0.0250	U	0.116	U	0.0250	U	0.0250	U	0.0250	U	0.0500	U	0.0750	U	0.0404	U	0.0371	U	0.0374	U	0.0485	U	134	U	415	U	730
081219084	GB-SFA-PC-037	0 - 0.5	08/12/2019	0.0410	J	0.0250	U	0.0323	J	0.126	U	0.0250	U	0.0428	J	0.0500	U	0.0952	J	0.0366	U	0.0337	U	0.0339	U	0.0440	U	21.5	U	642	U	175
081219085	GB-SFA-PC-037	0.5 - 1.2	08/12/2019	0.0250	U	0.0250	U	0.0250	U	0.0250	U	0.0250	U	0.0250	U	0.0500	U	0.0750	U	0.0440	U	0.0404	U	0.0407	U	0.0527	U	132	U	831	U	394
081219086	GB-SFA-PC-037	1.2 - 1.7	08/12/2019	0.0250	U	0.0250	U	0.0250	U	0.0250	U	0.0250	U	0.0250	U	0.0500	U	0.0750	U	0.0455	U	0.0418	U	0.0422	U	0.0546	U	111	U	529	U	874
081219076	GB-SFA-PC-038B	0 - 0.5	08/12/2019	0.130	U	0.0250	U	0.0250	U	0.303	U	0.0923	J	0.0688	J	0.0500	U	0.0750	U	0.127	U	0.117	U	0.118	U	0.153	U	193	U	1,590	U	720
081219077	GB-SFA-PC-038B	0.5 - 1.5	08/12/2019	0.0250	U	0.0250	U	0.0250	U	0.0250	U	0.0250	U	0.0250	U	0.0500	U	0.0750	U	0.0412	U	0.0378	U	0.0382	U	0.0494	U	8.6	U	87.8	J	474
081219078	GB-SFA-PC-038B	1.5 - 2	08/12/2019	0.0250	U	0.0250	U	0.0250	U	0.0250	U	0.0250	U	0.0250	U	0.0500	U	0.0750	U	0.0396	U	0.0364	U	0.0367	U	0.0476	U	102	U	333	U	637
080919074	GB-SFA-PC-039	0 - 0.7	08/09/2019	0.316	U	0.132	U	0.198	U	0.311	U	0.101	U	0.131	U	0.272	U	0.402	U	0.0534	U	0.0491	U	0.0495	U	0.0641	U	238	U	1,330	U	908
080919075	GB-SFA-PC-039	0.7 - 1.2	08/09/2019	0.788	U	0.245	U	0.243	U	0.602	U	0.0625	U	0.279	U	0.283	J	0.561	J	0.173	U	0.159	U	0.160	U	0.207	U	257	U	538	U	676
Total Number of Samples Analyzed:				96		96		96		96		96		96		96		96		96		96		96		23		23		23		
Number of Detections:				70		46		56		67		51		60		51		54		10		3		23		7		20		23		
Min:				0.041		0.0354		0.0306		0.0348		0.0324		0.0343		0.0827		0.0952		0.101		0.136		0.0793		0.0523		9.9		63.7		
Max:				62.3		20.4		143		242		213		60.7		149		209		7.46		0.179		18.8		0.284		299		2,030		

Notes:

Sorted by 9-digit Code

-- = Analysis not performed

% = percent

Dup = Quality Control Field Duplicate Sample

GEO = Geotechnical Property

J = Estimated concentration

mg/kg = milligrams per kilogram

PAH = Polycyclic Aromatic Hydrocarbon

PVOC = Petroleum Volatile Organic Compound

TPAH = Total PAHs

U = Concentration was not detected above the reported limit

- The following rules apply to the summation of Total PAH (13) calculated by OBG, Part of Ramboll:
 - Where no detections were observed, the maximum individual reported detection limit is presented.
 - Where detections were observed, ½ the reported detection limit for non-detects was used in the summation.
 - The list of Total PAH (13) is as follows: Acenaphthene, Acenaphthylene, Anthracene, Benzo(a)anthracene, Benzo(a)pyrene, Benzo(b)fluoranthene, Benzo(k)fluoranthene, Chrysene, Fluoranthene, Fluorene, Naphthalene, Phenanthrene and Pyrene.

August 2019 data has not been validated.

Lab comments and definitions can be found in associated laboratory reports.

Table 2 - August 2019 Sediment Sample Results Summary

Wisconsin Public Service Corporation
 Green Bay Former Manufactured Gas Plant Site 700 N Adams St, Green Bay, Wisconsin
 BRRTS#: 02-05-000254 UPSEPA#: WIN000509948

9-digit Code	Sample Location	Sample Depth (feet)	Sample Date	Metal		Metal		Metal		Metal		Metal		Metal		Metal		Metal		Metal		Cyanide		GEO														
				Aluminum, Total	Antimony, Total	Arsenic, Total	Barium, Total	Cadmium, Total	Chromium, Total	Copper, Total	Iron, Total	Lead, Total	Manganese, Total	Mercury, Total	Nickel, Total	Selenium, Total	Silver, Total	Vanadium, Total	Zinc, Total	Cyanide, Total	Percent Moisture																	
				mg/kg	mg/kg	mg/kg	mg/kg	mg/kg	mg/kg	mg/kg	mg/kg	mg/kg	mg/kg	mg/kg	mg/kg	mg/kg	mg/kg	mg/kg	mg/kg	mg/kg	mg/kg	mg/kg	mg/kg	mg/kg	mg/kg	mg/kg	%											
Reporting Units:				Result	Flag	Result	Flag	Result	Flag	Result	Flag	Result	Flag	Result	Flag	Result	Flag	Result	Flag	Result	Flag	Result	Flag	Result	Flag													
081219095	GB-SFA-PC-033	0 - 0.6	08/12/2019	5,490		0.17	U	1.7		20.7		0.10	U	10.5		10.6		10,300		2.4		232		0.011	U	9.6		0.90		0.10	U	19.3		15.2	J	0.099	U	5.4
081219096	GB-SFA-PC-033	0.6 - 1.1	08/12/2019	15,900		0.18	U	4.1		66.9		0.11	U	34.3		27.1		27,100		6.5		425		0.011	U	27.7		2.0		0.10	U	44.3		46.5		0.11	U	14.3
081219094	GB-SFA-PC-034	0 - 0.5	08/12/2019	16,400		0.18	U	3.5		96.1		0.11	U	31.7		28.7		25,800		7.5		495		0.011	U	26.4		2.1		0.11	U	48.3		48.1		0.11	U	15.0
081219090	GB-SFA-PC-035	0 - 0.5	08/12/2019	9,960		0.64	J	4.5		77.3		0.87	J	29.3		57.9		24,700		102		326		9.8		19.4		1.5		1.7		27.5		238		3.9		57.1
081219091	GB-SFA-PC-035	0.5 - 1.3	08/12/2019	10,400		0.56	J	4.7		93.2		0.94	J	35.8		62.3		19,600		295		263		7.2		17.1		1.7		1.4		26.8		226		2.1		46.8
081219092	GB-SFA-PC-035 Dup	0.5 - 1.3	08/12/2019	15,700		0.19	U	4.4		68.3		0.11	U	30.3		26.3		26,700		9.8		580		0.060		26.9		2.1		0.11	U	40.0		383		0.063	U	18.2
081219093	GB-SFA-PC-035	1.3 - 1.8	08/12/2019	16,100		0.19	U	4.6		69.0		0.11	U	30.7		26.2		27,200		6.9		602		0.071		28.0		2.1		0.11	U	41.1		42.3		0.088	U	18.7
081219087	GB-SFA-PC-036	0 - 0.5	08/12/2019	11,500		0.22	U	3.0		73.5		0.13	U	21.5		20.3		19,700		9.5		322		0.019	J	18.4		1.6		0.13	U	30.3		178		0.13	U	25.4
081219088	GB-SFA-PC-036	0.5 - 1.2	08/12/2019	3,650		0.19	U	1.8		63.4		0.11	U	13.9		11.8		9,800		44.0		180		0.027	J	7.6		0.64	J	0.11	U	23.3		51.6		0.084	U	19.3
081219089	GB-SFA-PC-036	1.2 - 1.7	08/12/2019	13,900		0.19	U	4.0		72.5		0.11	U	25.4		21.7		21,300		5.9		374		0.012	U	22.0		1.6		0.11	U	35.7		36.5		0.093	U	18.2
081219084	GB-SFA-PC-037	0 - 0.5	08/12/2019	2,850		0.17	U	1.2		12.4		0.10	U	15.3		7.1		5,590		3.2		134		0.011	U	7.6		0.53	J	0.098	U	8.8		10.4	J	0.061	U	10.0
081219085	GB-SFA-PC-037	0.5 - 1.2	08/12/2019	5,310		0.22	U	1.6		21.5		0.13	U	9.7		6.4		8,770		2.6		170		0.014	U	8.1		1.1		0.13	U	18.6		16.0	J	0.23	J	24.9
081219086	GB-SFA-PC-037	1.2 - 1.7	08/12/2019	17,700		0.21	U	4.5		84.0		0.13	U	32.7		27.9		26,200		7.0		530		0.014	U	30.0		2.3		0.12	U	45.1		42.7		0.13	U	27.6
081219076	GB-SFA-PC-038B	0 - 0.5	08/12/2019	6,090		0.31	U	1.7		31.6		0.18	U	12.5		15.0		9,370		10.5		191		0.042	J	8.6		1.1	J	0.18	U	15.4		52.1		0.21	U	48.0
081219077	GB-SFA-PC-038B	0.5 - 1.5	08/12/2019	4,340		0.20	U	1.3		7.6		0.12	U	14.4		8.3		7,770		1.7		155		0.020	J	12.4		0.61	J	0.12	U	15.8		9.5	J	0.098	U	19.9
081219078	GB-SFA-PC-038B	1.5 - 2	08/12/2019	13,500		0.19	U	3.9		59.4		0.11	U	28.0		23.0		21,000		5.4		376		0.012	U	25.0		1.7		0.11	U	36.2		37.5		0.091	U	16.7
080919074	GB-SFA-PC-039	0 - 0.7	08/09/2019	7,010		0.25	U	2.7		43.6		0.39	J	19.3		26.4		10,800		46.1		161		0.70		10.5		1.2		0.36	J	18.3		165		0.13	J	38.3
080919075	GB-SFA-PC-039	0.7 - 1.2	08/09/2019	17,400		0.20	U	3.7		85.8		0.12	U	34.0		29.2		24,800		8.1		553		0.021	J	29.9		2.7		0.12	U	45.4		111		0.11	U	23.5
Total Number of Samples Analyzed:				96		96		96		96		96		96		96		96		96		96		96		96		96		96		96		96		96		96
Number of Detections:				96		44		96		96		46		96		96		96		96		96		84		96		96		41		96		96		62		96
Min:				2,460		0.3		1.1		7.6		0.18		4.8		4.8		4,770		1.7		59.7		0.015		4.3		0.47		0.14		7.9		9.5		0.11		5.4
Max:				34,100		37.4		38.3		2,880		8		127		2,160		50,900		2,700		749		16.3		52.8		4.7		2.6		80		2,440		3.9		70.7

[Q:MGP 8/29/19, C:CMD 8/30/19, QA:SAE 9/5/19]

Notes:

Sorted by 9-digit Code

-- = Analysis not performed

% = percent

Dup = Quality Control Field Duplicate Sample

GEO = Geotechnical Property

J = Estimated concentration

mg/kg = milligrams per kilogram

PAH = Polycyclic Aromatic Hydrocarbon

PVOC = Petroleum Volatile Organic Compound

TPAH = Total PAHs

U = Concentration was not detected above the reported limit

- The following rules apply to the summation of Total PAH (13) calculated by OBG, Part of Ramboll:
 - Where no detections were observed, the maximum individual reported detection limit is presented.
 - Where detections were observed, ½ the reported detection limit for non-detects was used in the summation.
 - The list of Total PAH (13) is as follows: Acenaphthene, Acenaphthylene, Anthracene, Benzo(a)anthracene, Benzo(a)pyrene, Benzo(b)fluoranthene, Benzo(k)fluoranthene, Chrysene, Fluoranthene, Fluorene, Naphthalene, Phenanthrene and Pyrene.

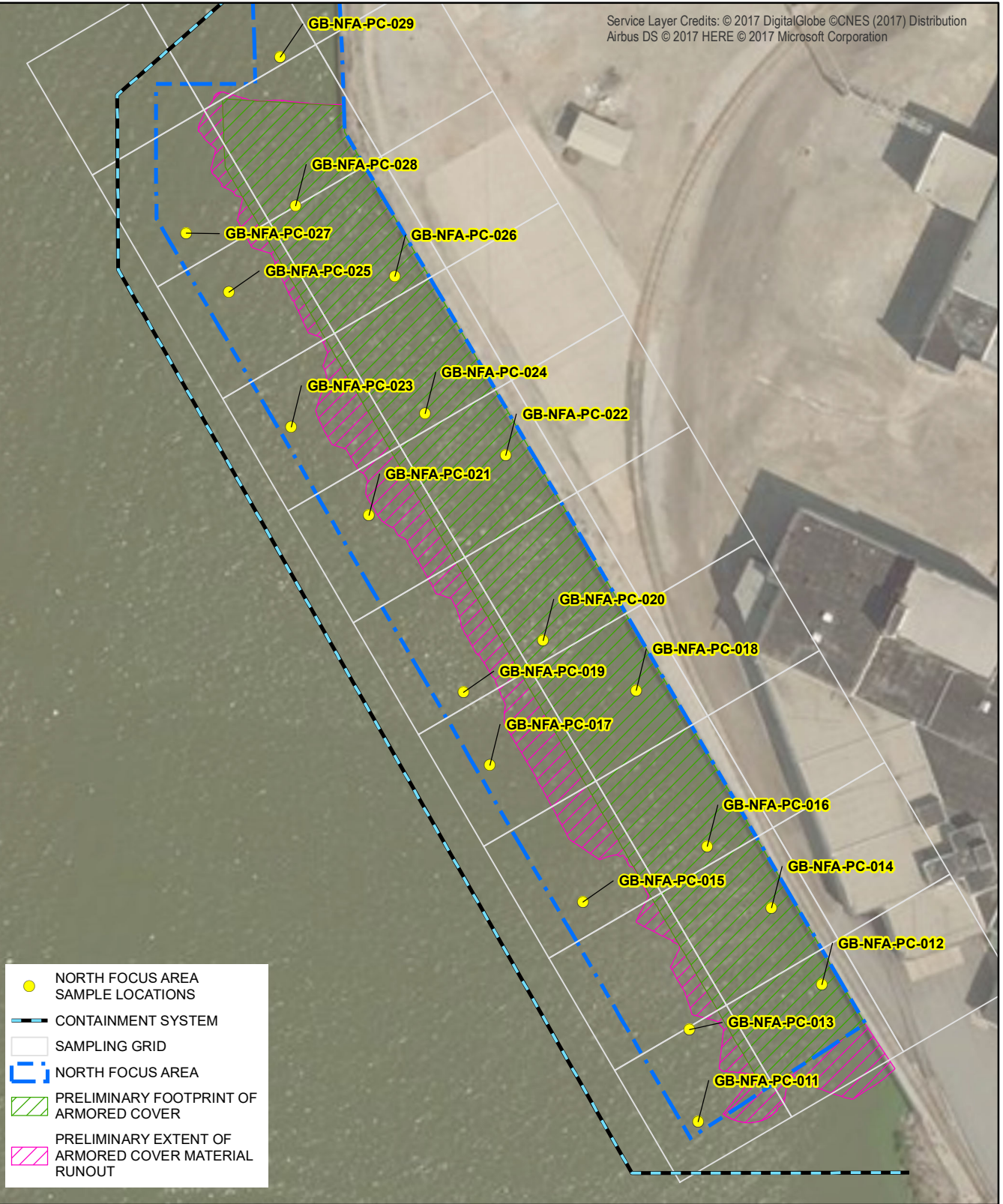
August 2019 data has not been validated.

Lab comments and definitions can be found in associated laboratory reports.

PLOTDATE: 9/9/2019 10:15:39 AM, ENGELHSA

\\server27-011Y Drive\GIS\Projects\1511584\MXD\MPR\2019_08-MPR\F\F 2019_08 MPR-NFA Locs.mxd

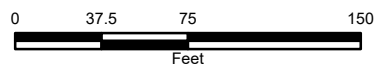
Service Layer Credits: © 2017 DigitalGlobe ©CNES (2017) Distribution Airbus DS © 2017 HERE © 2017 Microsoft Corporation



- NORTH FOCUS AREA SAMPLE LOCATIONS
- CONTAINMENT SYSTEM
- SAMPLING GRID
- NORTH FOCUS AREA
- PRELIMINARY FOOTPRINT OF ARMORED COVER
- PRELIMINARY EXTENT OF ARMORED COVER MATERIAL RUNOUT

FORMER GREEN BAY MANUFACTURED GAS PLANT SITE
 WISCONSIN PUBLIC SERVICE CORPORATION
 CITY OF GREEN BAY, WISCONSIN
 MONTHLY PROGRESS REPORT

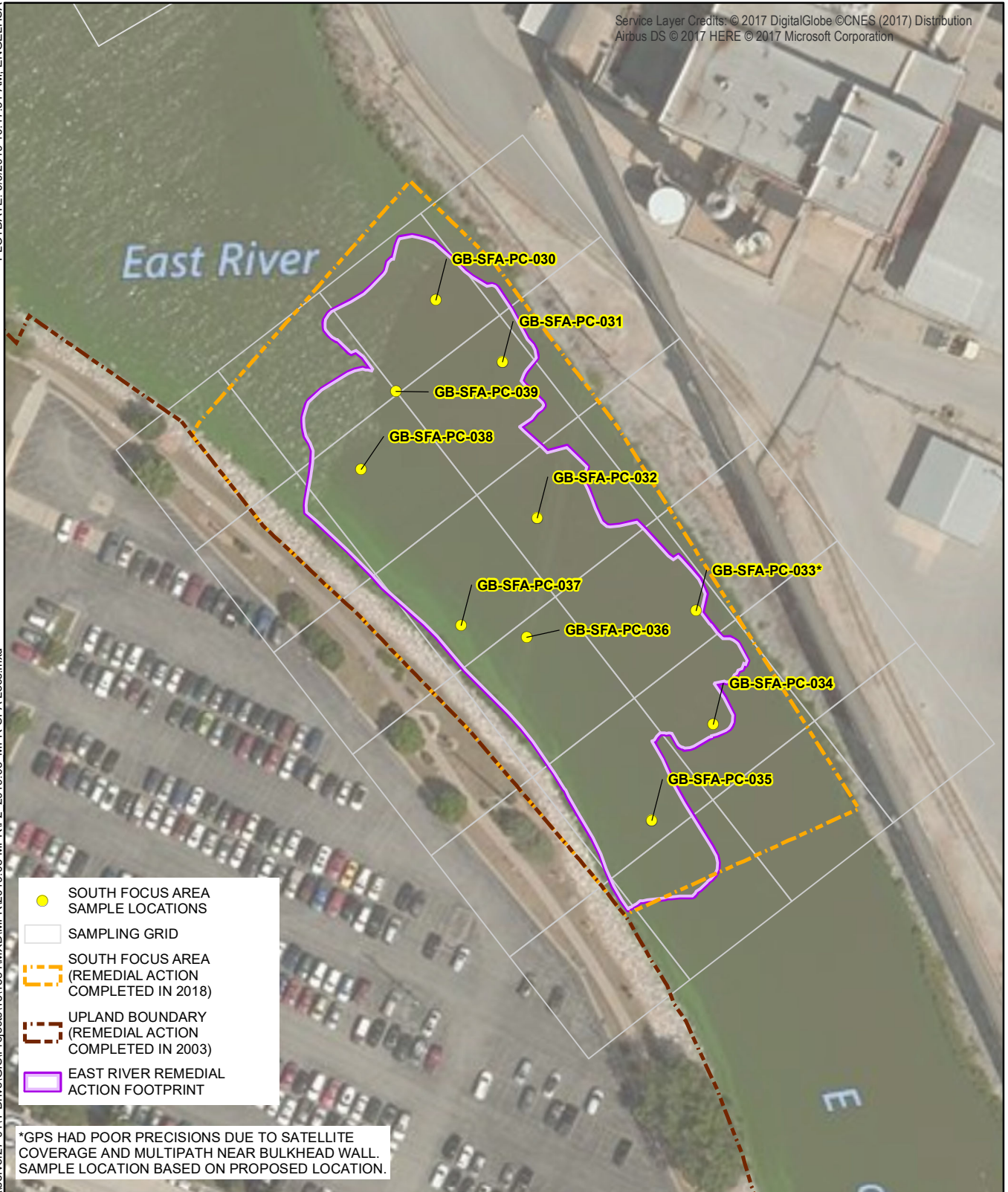
**NORTH FOCUS AREA
 POST-CONSTRUCTION SAMPLE LOCATIONS**



PlotDate: 9/9/2019 10:17:51 AM, ENGELHSA

\\server27-011Y Drive\GIS\Projects\1511584\WXD\MPR\2019.08-MPR\F2_2019.08_MPR-SFA_Locs.mxd

Service Layer Credits: © 2017 DigitalGlobe ©CNES (2017) Distribution Airbus DS © 2017 HERE © 2017 Microsoft Corporation



- SOUTH FOCUS AREA SAMPLE LOCATIONS
- SAMPLING GRID
- SOUTH FOCUS AREA (REMEDIAL ACTION COMPLETED IN 2018)
- UPLAND BOUNDARY (REMEDIAL ACTION COMPLETED IN 2003)
- EAST RIVER REMEDIAL ACTION FOOTPRINT

*GPS HAD POOR PRECISIONS DUE TO SATELLITE COVERAGE AND MULTIPATH NEAR BULKHEAD WALL. SAMPLE LOCATION BASED ON PROPOSED LOCATION.

FORMER GREEN BAY MANUFACTURED GAS PLANT SITE
 WISCONSIN PUBLIC SERVICE CORPORATION
 CITY OF GREEN BAY, WISCONSIN
 MONTHLY PROGRESS REPORT

**SOUTH FOCUS AREA
 POST-CONSTRUCTION SAMPLE LOCATIONS**

