



Gannett Fleming

Excellence Delivered *As Promised*

August 6, 2020

File #34286.009

Mr. Howard Caine – SR-6J
Remedial Project Manager
Waste Management Division
USEPA Region V
77 West Jackson Boulevard
Chicago, Illinois 60604-3590

Ms. Candace Sykora
Wisconsin Department of Natural Resources
890 Spruce Street
Baldwin, Wisconsin 54002

Re: MRDS SVE System Fourth Trial Seasonal Shutdown Assessment Report
National Presto Industries, Inc., Superfund Site, Eau Claire, Wisconsin
USEPA CERCLIS ID WID006196174
WDNR BRRTS 02-09-000267 and FID 609038320

Dear Howard and Candace:

On behalf of National Presto Industries, Inc. (NPI), Gannett Fleming Inc. (GF) is submitting this letter report assessing the fourth trial seasonal shutdown of the Melby Road Disposal Site soil vapor extraction (MRDS SVE) system at NPI's Superfund site in Eau Claire, Wisconsin. The first four trial seasonal shutdowns were conducted from December 2016 through June 2017, December 2017 through June 2018, December 2018 through June 2019, and December 2019 through June 2020, respectively, following protocol presented in GF's April 14, 2016, *Modified Cold Weather Operation Assessment* report, as approved by USEPA. GF's:

- August 2017 *MRDS SVE System Trial Seasonal Shutdown Assessment* report presented results from the first trial shutdown.
- August 2018 *MRDS SVE System Second Trial Seasonal Shutdown Assessment* report provided results from the second trial shutdown.
- October 2019 *MRDS SVE System Third Trial Seasonal Shutdown Assessment* report summarized results from the third trial shutdown.
- July 2020 *NPI Monthly Progress Report for June 2020* stated that GF would submit this fourth assessment report on NPI's behalf.

A completed certification page for this submittal is also attached.

Gannett Fleming, Inc.

8040 Excelsior Drive, Suite 303 • Madison, WI 53717

t 608.327.5050 • f 608.531.2873

www.gannettfleming.com

Mr. Howard Caine – SR-6J
USEPA Region V
Ms. Candace Sykora
Wisconsin Department of Natural Resources
August 6, 2020

-2-

Background Information on the MRDS SVE System

Between 1966 and 1970, waste forge compound was landfilled at the MRDS in trenches up to 20 feet deep. In its pure form, the forge compound consisted of approximately equal parts of graphite, asphalt, and mineral oil and was used to manufacture military ordnance (i.e., shells and projectiles). The waste forge compound that was generated contained metals, volatile organic compounds (VOCs), and semi-volatile organic compounds. The primary chemical of concern associated with the waste forge compound is 1,1,1-trichloroethane (TCA), a solvent that was used to remove the forge compound from the projectile manufacturing equipment. As described in GF's July 14, 1999, status report, a vapor-phase concentration of 12 micrograms per liter ($\mu\text{g}/\ell$) was established as the threshold value corresponding to the 40 $\mu\text{g}/\ell$ NR 140 preventive action limit (PAL) for dissolved-phase TCA in groundwater. Applying the same formula to trichloroethylene (TCE), a vapor-phase threshold value of 0.10 $\mu\text{g}/\ell$, corresponding to the 0.5 $\mu\text{g}/\ell$ PAL for dissolved-phase TCE in groundwater, is calculated. It should be noted that the groundwater clean-up goals for the site are now the NR 140 Enforcement Standard/ federal Maximum Concentration Limit (ES/MCL), which are 10 times the PAL for TCE and 5 times the PAL for TCA. Hence, the corresponding vapor-phase thresholds are 1.0 and 60 $\mu\text{g}/\ell$ for TCE and TCA, respectively. Based on analytical results from long-term monitoring, other VOCs that have contributed ≥ 10 percent of the mass per unit volume of MRDS exhaust gas emissions include 1,1-dichloroethane (DCA) and tetrachloroethylene (PCE).

During the summer of 1998 before the SVE system began operating, about 20,000 cubic yards of waste forge compound/soil from other areas on the NPI site were consolidated at the MRDS, and a multi-layer cap that included a synthetic geomembrane and geosynthetic clay liners was installed over the top of the material to prevent precipitation from infiltrating through it and the underlying waste. The capped area covers approximately 10 acres. The average depth to the water table is approximately 70 feet below the bottom of the multi-layer cap, and the native soil above the water tables consists of sand and gravel. Correspondence describing the details of the placement of the waste forge compound/soil and installation of the multi-layer cap is on file with the United States Environmental Protection Agency (USEPA) and the Wisconsin Department of Natural Resources (WDNR).

Figure 1 shows the layout of the SVE system, which consists of 12 vent wells, VW-1 through VW-12; three vacuum blowers; one condensate knock-out tank; a sump; and associated underground piping. The blowers and the condensate knock-out tank are housed in the SVE equipment building, and the sump is located beneath the SVE equipment building shown on Figure 1. As

Mr. Howard Caine – SR-6J
USEPA Region V
Ms. Candace Sykora
Wisconsin Department of Natural Resources
August 6, 2020

-3-

described in GF's first status report, a start-up test of the SVE system was conducted on October 14, 1998, and the system began operating full time on October 28, 1998. As stipulated in the May 1996 Record of Decision (ROD), the MRDS SVE was designed and installed to reduce the volume of VOCs in on-site soils and create a vapor barrier to prevent future releases of VOCs into the groundwater. To prevent stagnation zones from developing between any pair of wells long term, only 9 of the 12 vent wells operate at a time, and a different set of 3 wells is turned off each month, when the system is operating.

Individual vent well and SVE exhaust samples are collected in Tedlar bags and Summa canisters to measure performance and compliance monitoring criteria. The samples in the Tedlar bags are field-screened for VOCs and methane using a portable flame-ionization detector (FID). These FID readings serve as a screening tool and are used to identify the occasional elevated reading in a well and to determine whether these readings are due primarily to methane or VOCs. The Summa canisters are currently submitted to Pace Analytical (Pace) in Minneapolis, Minnesota, and the air samples are analyzed for 1,1-DCA, PCE, TCA, and TCE, as approved by both agencies. For the purpose of this report, 1,1-DCA, PCE, TCA, and TCE will hereafter be referred to as the NPI VOCs. Pace analyzes for the NPI VOCs by gas chromatography/mass spectrometry (GC/MS) using Method TO-15. Prior to June 2016, exhaust gas samples were analyzed for the 34 VOCs on the USEPA target compound list (TCL).

Field screening of the individual vent wells and SVE exhaust gas has typically resulted in 0.0 parts per million volume (ppmv) readings. When a positive reading has occurred, it has routinely been attributable to the presence of methane. Historically, 10 of the 34 VOCs on USEPA's target compound list (TCL VOCs) have been detected at or above 0.1 µg/l in the exhaust gas samples analyzed in the laboratory. In a November 20, 2014, letter from Howard, the USEPA approved monitoring of the vent wells and SVE exhaust quarterly rather than monthly. However, submittal of one-page monthly reports is still required. Quarterly sampling began in 2015. Cumulative emissions of total VOCs from the SVE system in 2019 were approximately 0.70 pound. Since the SVE system began operation in October 1998, the estimated cumulative emissions have been approximately 170 pounds. See GF's March 2020 *Annual Interim Remedial Action Status Report – 2019* for additional details on emissions.

Between October 28, 1998, and October 11, 1999, all three blowers operated continuously to extract approximately 1,710 actual cubic feet per minute (acfm) of soil gas from nine vent wells at a time. This produced an average soil gas extraction rate of 190 acfm per well. Vacuum readings

Mr. Howard Caine – SR-6J
USEPA Region V
Ms. Candace Sykora
Wisconsin Department of Natural Resources
August 6, 2020

-4-

on the SVE vent well manifold in the equipment building ranged from 18 to 25 inches of water column (inch wc).

Based on the first-year performance of the SVE system, the USEPA and WDNR approved the use of a single blower, and two of the three blowers were shut down on October 11, 1999. The agencies allowed NPI to turn two of the three blowers off because the vapor-phase concentrations of VOCs under the capped area had decreased to the point where their effects on groundwater were negligible. The contingency plan calls for NPI to resume operating all three blowers if vapor-phase VOC concentrations rebound such that impacts to groundwater are likely.

Since October 11, 1999, the system has operated with one blower running at an average flow rate of approximately 570 acfm. With nine vent wells open, this produces an average soil gas extraction rate of 63 acfm per well. Manifold vacuum readings in the equipment building have ranged from 4 to 32 inches wc.

In addition, after operation of the system began in October 1998, NPI periodically field-screened soil gas at 17 monitoring points, comprised of 4 interior locations (MP-1, MP-3, MP-5, and MP-6) and 13 perimeter locations (MP-10, MP-11, MP-12, and MP-14 through MP-23). Field-screening of the soil gas at the interior and perimeter monitoring points was discontinued in January 2000 and July 2001, respectively, because VOC concentrations in the soil gas were low to non-detect and collection of additional data was not necessary.

Because the multi-layer cap prevents precipitation from infiltrating through it and the underlying waste, the primary driving force behind the downward migration of VOCs to the groundwater has been eliminated. Isolated under the cap, the waste now releases previously sorbed VOCs only by diffusion, a relatively slow process. In addition, there is a low-level source of methane under the cap. Since October 1999, the system has continued to operate with just one blower running. It captures the vapor-phase VOCs diffusing from the forge compound before they reach the groundwater and controls the methane being generated.

There are also two groundwater extraction wells (EW-1R and EW-2) and three groups of current/former groundwater monitoring well nests (MW-5A/B, MW-62A/B/C, and MW-63A/B) in the MRDS area, as shown on Figure 1. In April 2020, piezometers MW-5B, MW-62C, and MW-63B were abandoned, as approved by both agencies. Otherwise, monitoring wells MW-5A, MW-62A, and MW-63A and piezometer MW-62B are sampled periodically for five VOCs: TCA, TCE,

Gannett Fleming

Mr. Howard Caine – SR-6J
USEPA Region V
Ms. Candace Sykora
Wisconsin Department of Natural Resources
August 6, 2020

-5-

PCE, 1,1-DCA, and 1,1-dichloroethene (1,1-DCE). When EW-1R and EW-2 are not pumping, groundwater beneath the site flows to the north-northwest.

Extraction wells EW-1R and EW-2 at the MRDS are currently turned off. An 18-month trial shutdown of EW-1R and EW-2 ended in March 2012. A May 23, 2012, report from GF to the agencies documented the analytical results of six rounds of groundwater sampling from the trial shutdown. The report concluded that the trial shutdown of the extraction wells, an interim remedy prior to construction of a cap and SVE system, did not result in any adverse impacts to groundwater quality at and downgradient from the MRDS. It also concluded that continued operation of the extraction wells was no longer necessary to protect groundwater quality at and downgradient from the MRDS. The USEPA and WDNR verbally agreed with these conclusions in a December 13, 2012, meeting at NPI. The USEPA requested that NPI amend the Operating and Maintenance (O&M) Plan for the MRDS to document the shutdown of EW-1R and E-2 and the agencies' approvals of the long-term shutdown of the extraction wells. The amendment was completed and provided to both agencies via e-mail on July 17, 2013.

Historical Exhaust Gas Analytical Results for the MRDS SVE System

Table 1 summarizes the laboratory analytical results for the 10 TCL VOCs identified in the SVE exhaust at or above 0.1 µg/l since January 2004. Based on Table 1, Figures 2 and 3 both show the concentrations of three select VOCs detected in the SVE exhaust gas (i.e., TCA, TCE, and PCE). Figure 2 shows the VOC concentrations plotted on an arithmetic scale. Figure 3 shows the concentrations plotted on a log scale. Both plots show that VOC concentrations decreased rapidly during the first two months of operation of the SVE system and that they have remained below 1.0 µg/l since January 1999. In addition, as summarized in Table 1, since 08/12/09 (i.e., over the past ten-plus years), the maximum measured TCE concentration was 0.0088 µg/l on 02/25/13, more than two orders of magnitude below the 1.0 µg/l vapor-phase threshold value corresponding to the 5.0 µg/l dissolved-phase ES/MCL for TCE in groundwater.

Modified Cold Weather Operation at the MRDS SVE System (December 2015-March 2016)

Since EW-1R and EW-2 were shut down at the MRDS, the constant flow of water to cascade air stripper #1 (CAS-1) was eliminated. Without the constant flow of pumped water from the extraction wells, the 30-gallon batches of condensate generated through operation of the SVE system tend to freeze in the underground pipe running to CAS-1 (located about 250 feet southwest of the MRDS SVE equipment building) during cold weather. To address the issue during the winter of 2014-2015, the SVE system was periodically turned off, the condensate that

Mr. Howard Caine – SR-6J
USEPA Region V
Ms. Candace Sykora
Wisconsin Department of Natural Resources
August 6, 2020

-6-

had accumulated in the sump was pumped into drums, and the drums were emptied into CAS-2R.

Based on the existing multi-layer cap at the MRDS, the extensive unsaturated zone extending 50 feet or more from the bottom of the buried/capped waste forge compound to the top of the water table, consistently low FID readings and laboratory analytical results for VOCs in the MRDS SVE exhaust gas since 2001, and the effective protection of groundwater quality associated with the MW-34/70 area SVE system (without a cap) that is turned off each year during cold weather months, NPI did the following:

1. Installed a variable frequency drive (VFD) in the MRDS SVE equipment building in the fall of 2015 to control the flow from the vacuum blowers.
2. Used the VFD to decrease flow from 570 to 150 acfm starting on December 2, 2015. Operated the system at flows ranging from 150-220 acfm from December 2, 2015, through March 22, 2016. With nine vent wells open, this produced average soil gas extraction rates of 17-24 acfm per well. Manifold vacuum readings in the equipment building decreased to <1 inch wc, and condensate production dropped to zero.
3. Collected SVE exhaust gas samples monthly in December 2015 and January through March 2016 to monitor TCA and TCE concentrations relative to their calculated threshold levels of 60 and 1.0 µg/ℓ, respectively, and submitted them to Pace for routine analysis.
4. Maintained the existing contingency plan, which calls for NPI to resume operation of all three blowers if vapor-phase TCE/TCA concentrations rebound such that impacts to groundwater are likely (i.e., ≥50 percent of a calculated threshold value). Alternatively, in the event vapor-phase VOC concentrations rebounded such that impacts to groundwater may be possible (10-50% of a calculated threshold value), then NPI would resume operation of one blower at 570 acfm.
5. Continued standard O&M of the system and monthly reporting to the agencies, except as described in Items #2 through #4, above.
6. Used the VFD to increase flow from 150 to 570 acfm and resumed normal operation of the SVE system on March 22, 2016.
7. Submitted an assessment report to the agencies documenting the success of the modified cold weather operation and proposing a trial seasonal shutdown of the MRDS SVE system. See GF's April 2016 *Modified Cold Weather Operation* report for details, including a work plan.

Gannett Fleming

Mr. Howard Caine – SR-6J
USEPA Region V
Ms. Candace Sykora
Wisconsin Department of Natural Resources
August 6, 2020

-7-

Fourth Trial Seasonal Shutdown of the MRDS SVE System (December 2019-June 2020)

On December 4, 2019, the MRDS SVE system was shut down for a fourth 6-month trial period, as approved by both agencies. Prior to shutdown, routine quarterly sampling was conducted with a single vacuum blower running in low-flow mode at 240 acfm. In addition, the SVE system operated for 96.5 hours between March 20 and 24, 2020, with one blower running and the VFD dialed down to its low-flow setting (<250 acfm) for quarterly sampling.

On June 1, 2020, low-flow operation of the SVE system resumed. The system was off on June 2nd or 3rd for approximately 5.1 hours while the MRDS remediation equipment building was cleaned. On June 10th, the VFD was adjusted for normal seasonal operation. Data collected between June 1st and 30th show that the blower ran at average flow rates of 220 and 570 acfm and manifold vacuums were <1 inch wc and steady at 6 inch wc under low and normal flow conditions, respectively, when operating. Additional monitoring performed on June 10th, just before the flow rate was increased from 220 to 570 acfm, included:

- Field screening the 12 vent wells (VW-1 through VW-12) and SVE exhaust gas with a portable FID for VOCs and methane.
- Collecting samples of the SVE exhaust gas for laboratory analysis of the NPI VOCs.

Everything was done according to GF's April 2016 work plan, with USEPA's approval. See GF's August 2017, August 2018, and October 2019 assessment report for details of the first, second, and third trial seasonal shutdowns, respectively. Copies of the laboratory analytical results and field data sheets are available upon request.

Assessment of the Trial Seasonal Shutdown Results

The FID readings and lab data collected during the four trial seasonal shutdowns were consistent with historical results when the SVE system was operated at 570 acfm. As anticipated, there was a measureable increase in overall NPI VOC concentrations from December 2016 through June 2017, December 2017 through June 2018, December 2018 through June 2019, and December 2019 through June 2020 due to the gradual accumulation of vapors from the landfilled waste forge compound under the cap. However, vapor-phase TCA and TCE concentrations remained more than two orders of magnitude below calculated threshold levels corresponding to the ES/MCL for both compounds in groundwater, as summarized in GF's April 2016 work plan. No issues related to the trial seasonal shutdowns were observed.

Mr. Howard Caine – SR-6J
USEPA Region V
Ms. Candace Sykora
Wisconsin Department of Natural Resources
August 6, 2020

-8-

Table 2 summarizes the June 2016 through June 2020 NPI VOC concentration data and calculated fractional changes and ratios for comparison. Example computations are provided on Page 2 of Table 2. Based on the overall results, GF believes the trial shutdown data support shutting the MRDS SVE down seasonally, like at the MW-34/70 area. Details are described in the following section.

Record of Decision Considerations and Future Work

As required by the May 1996 ROD, NPI installed an SVE system at the MRDS “to remove VOCs from the soils and to provide a vapor barrier to prevent the migration of VOCs into the groundwater.” Since October 1998, NPI has operated the MRDS SVE system and met both objectives. However, there is no specific requirement for continuous operation of the system in the May 1996 ROD. In addition, monitoring results from the December 2016 through June 2017, December 2017 through June 2018, December 2018 through June 2019, and December 2019 through June 2020 trial seasonal shutdowns document that continuous operation of the system is not necessary. The multi-layer cap at the MRDS has essentially eliminated infiltration of precipitation and vertical migration of contaminants and has proven to provide reliable protection of groundwater quality, provided the gradual buildup of vapor-phase TCE and TCA in the vadose zone between the buried waste and water table is periodically addressed. Consequently, going forward, NPI proposes to:

- Continue to operate the MRDS SVE system with one blower running at 570 acfm through November 2020, conduct standard O&M, and provide monthly progress reports to the agencies.
- In December 2020, turn the blower(s) off and leave the system shut down for six months. In March 2021, the system will operate for about one week with one blower running at 150-240 acfm for quarterly field screening and sampling.
- Resume six-month seasonal operation of the system with one blower running at 570 acfm starting in June 2021.
- Field screen its exhaust gas for VOCs and methane quarterly using a portable FID.
- Collect and analyze exhaust gas samples for TCE; TCA; PCE; and 1,1-DCA quarterly. Analysis for the 34 TCL VOCs will resume if FID readings indicate increasing VOC concentrations.

Gannett Fleming

Mr. Howard Caine – SR-6J
USEPA Region V
Ms. Candace Sykora
Wisconsin Department of Natural Resources
August 6, 2020

-9-

- Continue to use a contingency plan reflective of the current groundwater standards of 5 and 200 $\mu\text{g}/\ell$, respectively, for TCE and TCA. These concentrations correspond to vapor-phase threshold values of 1.0 and 60 $\mu\text{g}/\ell$, respectively.
- Update GF's October 22, 1998, final O&M plan for the MRDS SVE system to include seasonal operation, etc. and submit it for agency review and comment, as Howard suggested during the December 2019 annual meeting at NPI.

This approach will continue to meet ROD requirements (i.e., remove VOCs from soils and protect groundwater quality) and have the added benefit of reducing the project's environmental footprint. Please let me know if you concur with NPI's proposed path forward, and feel free to contact me at 608-327-5047, if you have any questions or need additional information.

Sincerely,

GANNETT FLEMING, INC.



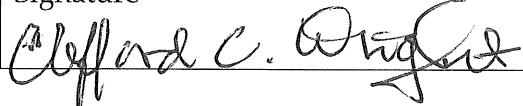
Clifford C. Wright, P.E., P.G.
Project Engineer

CCW/jec/Enc.

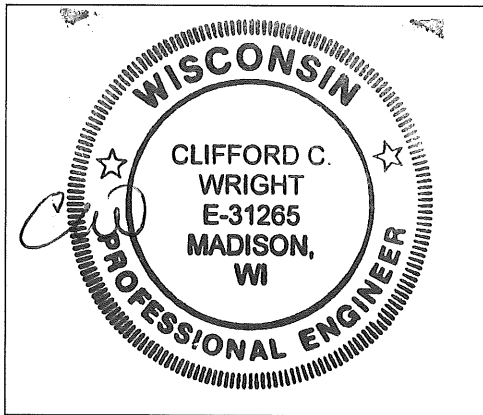
ecc: Derrick Paul (NPI)
Chelsea Payne and Dennis Kugle (GF)

ENGINEERING AND HYDROGEOLOGIST CERTIFICATIONS

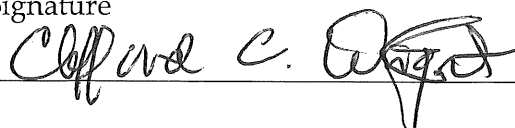
I hereby certify that I am a registered professional engineer in the State of Wisconsin, registered in accordance with the requirements of ch. A-E 4, Wis. Adm. Code; that this document has been prepared in accordance with the rules of Professional Conduct in ch. A-E 8, Wis. Adm. Code; and that, to the best of my knowledge, all information contained in this document is correct and the document was prepared in compliance with all applicable requirements in chs. NR 700 to 726, Wis. Adm. Code.

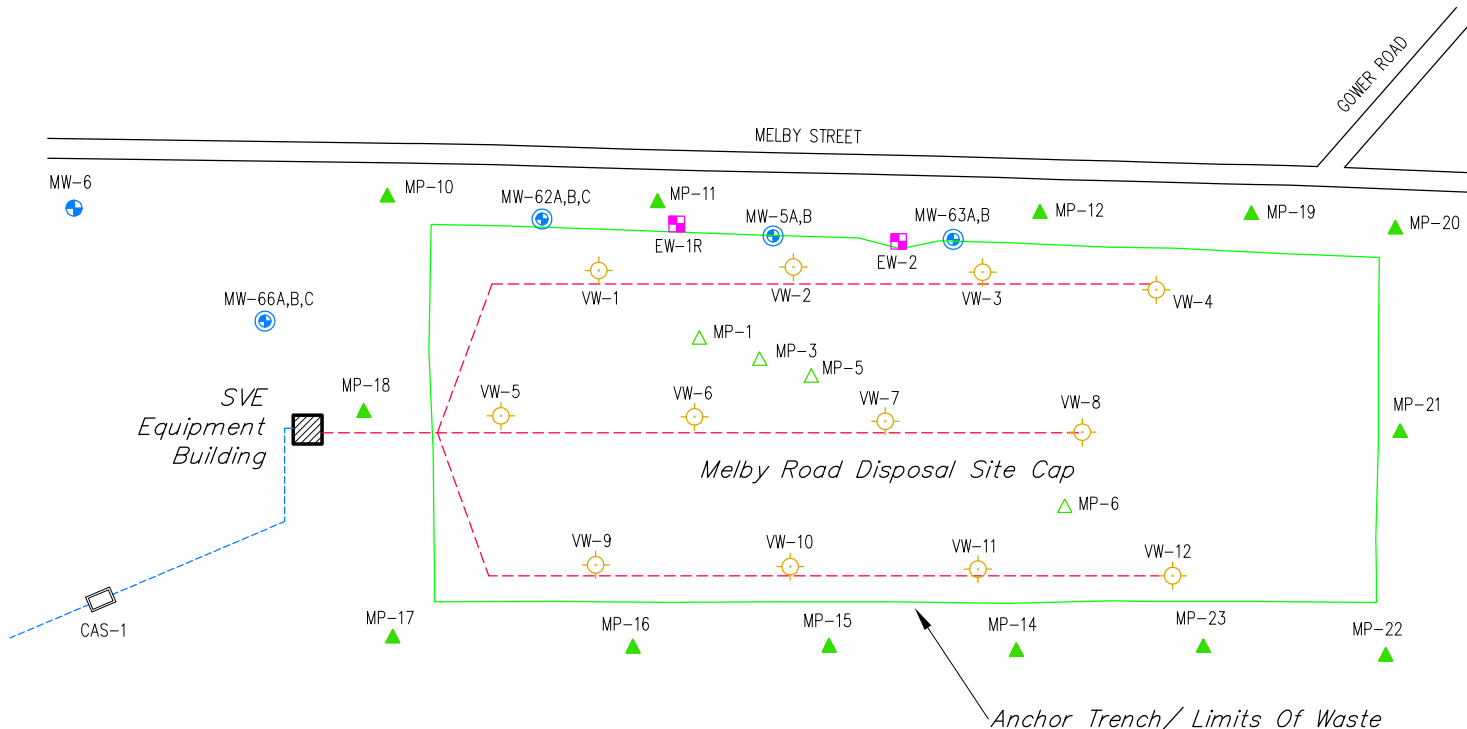
Print Name Clifford C. Wright	Title Project Engineer/Geologist
Signature 	Date 08/5/2020

P.E. Seal for E-31265:



I hereby certify that I am a hydrogeologist as that term is defined in s. NR 712.03(1), Wis. Adm. Code, am registered in accordance with the requirements of ch. GHSS 2, Wis. Adm. Code, or licensed in accordance with the requirements of ch. GHSS 3, Wis. Adm. Code, and that, to the best of my knowledge, all information contained in this document is correct and the document was prepared in compliance with all applicable requirements in chs. NR 700 to 726, Wis. Adm. Code.

Print Name Clifford C. Wright	Title Project Engineer/Geologist
Signature 	Date 08/5/2020



LEGEND

- Soil Vapor Extraction Vent Well
- Perimeter Soil Gas Monitoring Point
- Interior Soil Gas Monitoring Point
- Groundwater Monitoring Well Nest
- Groundwater Monitoring Well
- Groundwater Extraction Well
- Cascade Aerator
- Underground Piping For SVE
- Underground Discharge Line For SVE
- Condensate/Pumped Groundwater (When EW-1R/EW-2 Are Operating)

MELBY ROAD DISPOSAL SITE SOIL VAPOR EXTRACTION SYSTEM

NATIONAL PRESTO INDUSTRIES, INC.
EAU CLAIRE, WISCONSIN

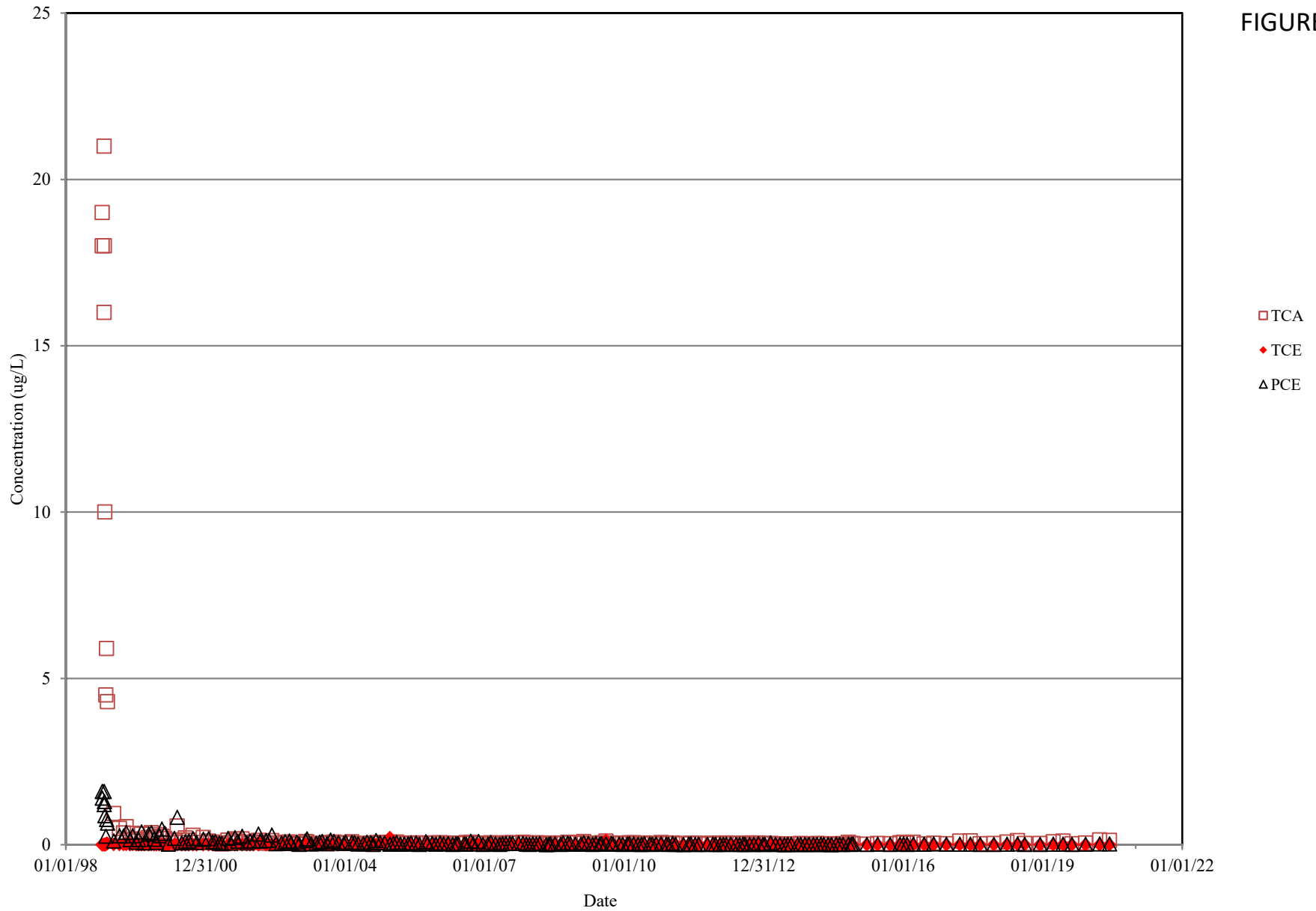
Gannett Fleming

FIGURE 1

L:\DRAFTING\44200\34286\009\mccw_l34286-009_2015_0730\F01.dwg, 7/30/2015 12:38:40 PM, PFP996

073015
ccw_L34286-009_2015_0730_F01

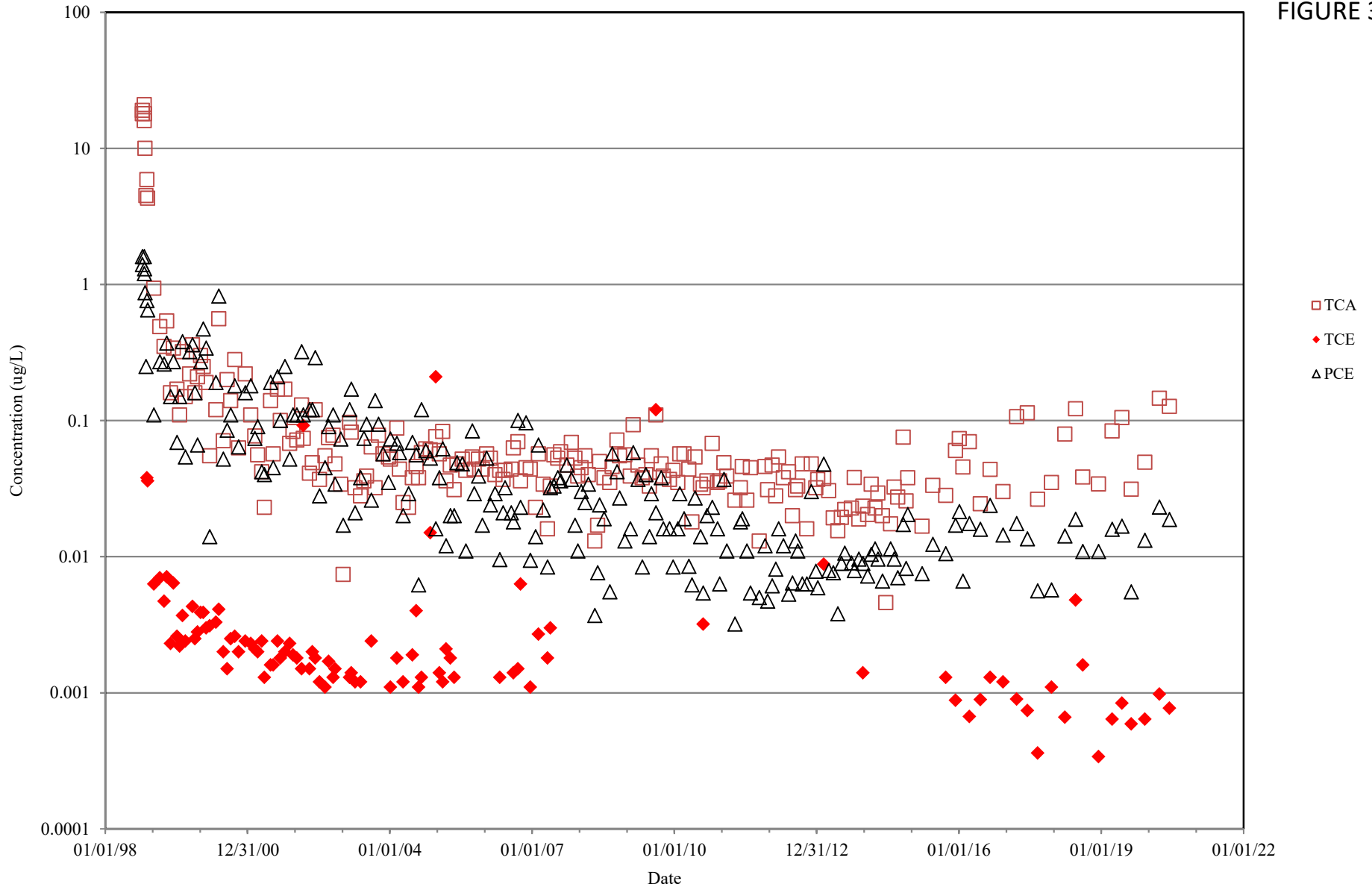
FIGURE 2



PRIMARY CHLORINATED VOCs IN THE MRDS SVE EXHAUST (ARITHMETIC SCALE)

NATIONAL PRESTO INDUSTRIES, INC.
EAU CLAIRE, WISCONSIN

FIGURE 3



PRIMARY CHLORINATED VOCs IN THE MRDS SVE EXHAUST (LOG SCALE)

NATIONAL PRESTO INDUSTRIES, INC.
EAU CLAIRE, WISCONSIN

NATIONAL PRESTO INDUSTRIES, INC.
EAU CLAIRE, WISCONSIN

TABLE 1

SUMMARY OF MRDS SVE SYSTEM EXHAUST GAS ANALYTICAL RESULTS (JANUARY 2004 - JUNE 2020)

Date	Detected Target Compound List Volatile Organic Compound Concentrations ⁽¹⁾											TCL VOCs
	Acetone RQ	2-Butanone RQ	Chloroethane	1,1-DCA	Ethylbenzene	PCE	Toluene RQ	TCA	TCE RQ	Xylenes RQ		
01/07/04	0.019	0.0079	<0.0011	0.010	<0.00087	0.073	0.0018	0.052	0.0011	0.0051		0.1699
02/24/04	0.024	0.011	<0.0012	0.021	0.093	0.068	0.19	0.088	0.0018	0.44		0.9368
03/16/04	0.027	0.015	<0.0011	0.011	0.0058	0.058	0.010	0.044	<0.0011	0.046		0.2168
04/13/04	0.013	0.0067	<0.0011	0.012	0.0011	0.020	0.025	0.025	0.0012	0.0072		0.1112
05/25/04	0.0055	0.0042	<0.0011	0.0063	0.0014	0.029	0.0087	0.023	<0.0011	0.010		0.0881
06/23/04	0.055	0.040	<0.0011	0.011	0.015	0.069	0.29	0.038	0.0019	0.059		0.5789
07/22/04	0.0026	<0.0029	<0.0011	0.014	<0.00087	0.056	<0.0011	0.046	0.0040	<0.0022		0.1226
08/10/04	0.011	0.0078	<0.0011	0.013	0.0095	0.0062	0.10	0.038	0.0011	0.058		0.2446
09/02/04	0.044	0.017	<0.0011	0.013	0.0081	0.12	0.023	0.058	0.0013	0.042		0.3264
10/04/04	0.010	0.0071	<0.0011	0.018	0.0068	0.060	0.013	0.062	<0.0011	0.041		0.2179
11/08/04	0.025	0.0078	<0.0011	0.017	0.0014	0.053	0.0025	0.061	0.015	0.011		0.1937
12/20/04	0.019	0.0066	<0.0011	0.022	0.00094	0.016	0.0015	0.076	0.21	0.0022		0.3542
01/17/05	0.014	0.012	<0.0011	0.011	0.0045	0.038	0.037	0.057	0.0014	0.023		0.1979
02/11/05	0.016	0.02	<0.0011	0.022	0.0076	0.062	0.0087	0.083	0.0012	0.047		0.2675
03/10/05	0.013	0.0045	<0.0011	0.012	<0.00087	0.012	0.002	0.036	0.0021	0.0051		0.0867
04/12/05	0.059	0.14	<0.0011	0.01	0.055	0.02	0.099	0.047	0.0018	0.31		0.7418
05/12/05	0.044	0.062	<0.0011	0.0091	0.0066	0.02	0.0088	0.031	0.0013	0.046		0.2288
06/03/05	<0.0019	<0.0024	<0.00087	0.015	<0.00014	0.049	<0.0012	0.048	<0.0018	0.0098		0.1218
07/12/05	0.010	0.0042	<0.0011	0.015	<0.00087	0.048	0.0025	0.052	<0.0011	<0.0022		0.1317
08/09/05	0.042	0.062	<0.0011	0.015	0.0010	0.011	0.0026	0.043	<0.0011	0.0095		0.1861
09/27/05	0.030	<0.0029	<0.0011	0.013	0.00093	0.084	0.0013	0.054	<0.0011	0.0094		0.1926
10/12/05	0.012	<0.0029	<0.0011	0.01	0.0012	0.029	0.014	0.044	<0.0011	0.0084		0.1186
11/15/05	0.0036	<0.0029	<0.0011	0.015	<0.00087	0.039	0.0052	0.052	<0.0011	<0.0022		0.1148
12/15/05	0.0083	0.0031	<0.0011	0.015	0.0022	0.017	0.0022	0.044	<0.0011	0.017		0.1088
01/17/06	0.022	0.0045	<0.0011	0.0083	0.0017	0.053	0.011	0.057	<0.0011	0.011		0.1685
02/14/06	0.014	<0.0029	<0.0011	0.012	0.011	0.024	0.0093	0.053	<0.0011	0.069		0.1924
03/22/06	0.010	0.0041	<0.0011	0.0086	0.0021	0.029	0.0033	0.04	<0.0011	0.016		0.1131
04/27/06	0.010	0.0036	<0.0011	0.0096	0.0015	0.0095	0.0016	0.043	0.0013	0.010		0.0901
05/23/06	0.018	0.0037	<0.0011	0.015	0.0030	0.021	0.004	0.037	<0.0011	0.025		0.1267
06/07/06	0.018	0.0044	<0.0011	0.011	0.00097	0.032	0.0013	0.043	<0.0011	0.0082		0.1189
07/25/06	0.020	0.014	<0.0011	0.013	<0.00087	0.021	0.0014	0.044	<0.0011	0.0062		0.1196
08/10/06	0.019	0.026	<0.0011	0.018	0.0050	0.018	0.0075	0.063	0.0014	0.043		0.2009
09/14/06	0.036	0.022	<0.0011	0.016	0.0057	0.1	0.0079	0.07	0.0015	0.046		0.3051
10/05/06	0.010	0.0031	<0.0011	0.0078	0.0013	0.023	0.0014	0.036	0.0063	0.0095		0.0984
11/15/06	0.0082	<0.0029	<0.0011	0.013	<0.00087	0.096	<0.0011	0.045	<0.0011	<0.0022		0.1622
12/19/06	0.0044	0.0031	<0.0011	0.013	<0.00087	0.0094	0.0014	0.044	0.0011	0.0055		0.0819
01/29/07	0.0060	<0.0029	<0.0011	0.0037	0.00089	0.014	0.0024	0.023	<0.0011	0.0065		0.0565
02/19/07	0.010	<0.0029	<0.0011	0.012	<0.00087	0.066	<0.0011	0.057	0.0027	0.0046		0.1523
03/28/07	0.015	0.0045	<0.0011	0.0091	0.034	0.022	0.087	0.034	<0.0011	0.18		0.3856
04/30/07	0.010	0.0069	<0.0011	0.0033	0.010	0.0084	0.022	0.016	0.0018	0.054		0.1324
05/23/07	0.0080	<0.0029	<0.0011	0.013	<0.00087	0.032	<0.0011	0.033	0.0030	<0.0022		0.0890
06/18/07	0.010	0.010	0.0021	0.018	0.11	0.033	0.13	0.056	<0.0011	0.57		0.9391
07/18/07	0.0082	0.12	<0.0011	0.014	0.015	0.038	0.0079	0.053	<0.0022	0.11		0.3661
08/10/07	0.024	0.0050	<0.0011	0.018	0.057	0.036	0.042	0.059	<0.0022	0.035		0.2760
09/26/07	0.0065	0.0029	<0.0011	0.011	0.0064	0.047	0.015	0.047	<0.0022	0.043		0.1788
10/30/07	0.013	<0.0029	<0.0011	0.015	0.0018	0.037	0.0014	0.069	<0.0022	0.016		0.1532
11/27/07	0.010	<0.0029	<0.0011	0.012	0.0014	0.017	0.0015	0.053	<0.0022	0.013		0.1079
12/19/07	0.0083	<0.0029	<0.0011	0.011	<0.0013	0.011	0.0013	0.039	<0.0022	0.0061		0.0767
01/15/08	0.0054	<0.0029	<0.0011	0.0049	<0.0013	0.030	0.0012	0.045	<0.0022	<0.0026		0.0865
02/13/08	0.0095	<0.0029	<0.0011	0.013	<0.0013	0.025	0.0054	0.055	<0.0022	<0.0026		0.1079
03/10/08	0.0075	0.0035	<0.0011	0.0099	<0.0013	0.034	<0.0011	0.040	<0.0022	<0.0026		0.0949
04/29/08	0.0059	0.0038	<0.0011	0.0029	<0.0013	0.0037	0.0025	0.013	<0.0022	0.0041		0.0359
05/20/08	0.0036	<0.0030	<0.0011	0.0020	<0.0013	0.0076	<0.0011	0.017	<0.0022	<0.0026		0.0302
06/03/08	0.0092	<0.0029	<0.0011	0.010	<0.0013	0.024	0.0014	0.050	<0.0021	0.0071		0.1017
07/08/08	0.016	0.0068	<0.0011	0.013	<0.0013	0.019	0.0013	0.038	<0.0021	0.0059		0.1000
08/21/08	0.029	0.0058	<0.0011	0.011	<0.0013	0.0055	0.0017	0.035	<0.0021	0.0064		0.0944
09/10/08	0.032	0.023	<0.0011	0.012	<0.0013	0.057	<0.0011	0.046	<0.0021	0.0036		0.1736

TABLE 1

SUMMARY OF MRDS SVE SYSTEM EXHAUST GAS ANALYTICAL RESULTS (JANUARY 2004 - JUNE 2020)

Date	Detected Target Compound List Volatile Organic Compound Concentrations ⁽¹⁾												TCL VOCs
	Acetone RQ	2-Butanone RQ	Chloroethane	1,1-DCA	Ethylbenzene	PCE	Toluene RQ	TCA	TCE RQ	Xylenes RQ			
10/16/08	0.015	<0.0029	<0.0011	0.016	<0.0013	0.042	<0.0011	0.072	<0.0021	0.0063		0.1513	
11/05/08	0.018	0.0042	<0.0011	0.016	<0.0013	0.027	0.0020	0.055	<0.0021	0.0076		0.1298	
12/15/08	0.0035	<0.0029	<0.0011	0.013	<0.0013	0.013	0.0020	0.056	<0.0021	0.0028		0.0903	
01/27/09	0.0097	0.0032	<0.0011	0.0049	<0.0013	0.016	<0.0011	0.039	<0.0021	<0.0013		0.0728	
02/18/09	0.0056	<0.0029	<0.0011	0.018	0.0021	0.058	0.0075	0.093	<0.0021	0.012		0.1962	
03/26/09	0.0043	<0.0029	<0.0011	0.0098	0.0030	0.037	0.011	0.047	<0.0021	0.015		0.1271	
04/29/09	0.016	0.0035	<0.0011	0.0034	<0.0013	0.0084	0.0011	0.038	<0.0021	<0.0013		0.0704	
05/26/09	0.036	0.0047	<0.0011	0.013	<0.0013	0.040	<0.0011	0.040	<0.0021	<0.0013		0.1337	
06/24/09	0.010	<0.0029	<0.0011	0.011	0.0043	0.014	0.018	0.033	<0.0021	0.019		0.1093	
07/07/09	0.012	<0.0029	<0.0011	0.015	<0.0013	0.029	<0.0011	0.055	<0.0021	<0.0013		0.1110	
08/12/09	0.027	0.0076	<0.0011	0.022	0.0028	0.021	0.022	0.11	0.12	0.018		0.3504	
09/22/09	0.026	0.0079	<0.0011	0.012	0.013	0.038	0.028	0.048	<0.0021	0.070		0.2429	
10/07/09	0.0048	<0.0029	<0.0011	0.0089	0.016	0.016	0.015	0.039	<0.0021	0.10		0.1997	
11/24/09	0.012	0.0036	<0.0011	0.012	<0.0013	0.016	0.0023	0.037	<0.0021	0.0077		0.0906	
12/22/09	0.016	0.0033	<0.0011	0.010	0.0016	0.008	0.0039	0.043	<0.0021	0.0084		0.0946	
01/27/10	0.022	<0.0029	<0.0011	0.0059	<0.0013	0.016	0.0039	0.035	<0.0021	0.0056		0.0884	
02/11/10	0.0064	<0.0029	<0.0011	0.012	<0.0013	0.029	0.0014	0.057	<0.0021	<0.0013		0.1058	
03/16/10	0.013	0.0060	<0.0011	0.0078	0.0081	0.019	0.015	0.057	<0.0021	0.063		0.1889	
04/22/10	0.0035	<0.0029	<0.0011	0.0037	<0.0013	0.0085	0.0012	0.044	<0.0021	<0.0013		0.0609	
05/17/10	0.011	<0.0029	<0.0011	0.0061	<0.0013	0.0062	<0.0011	0.018	<0.0021	<0.0013		0.0413	
06/10/10	0.011	0.0030	<0.0011	0.016	<0.0013	0.027	<0.0011	0.054	<0.0021	<0.0013		0.1110	
07/22/10	0.014	0.0097	<0.0011	0.013	<0.0013	0.014	0.0012	0.034	<0.0021	0.0029		0.0888	
08/10/10	0.023	0.0041	<0.0011	0.0090	0.0013	0.0054	0.0015	0.032	0.0032	0.0040		0.0835	
09/09/10	0.0035	<0.0029	<0.0011	0.011	0.016	0.020	0.044	0.036	<0.0021	0.080		0.2105	
10/20/10	0.0048	<0.0029	<0.0011	0.015	<0.0013	0.023	<0.0011	0.068	<0.0021	<0.0013		0.1108	
11/30/10	0.019	0.0036	<0.0011	0.010	<0.0013	0.016	<0.0011	0.035	<0.0021	<0.0013		0.0836	
12/16/10	0.0048	<0.0029	<0.0011	0.0086	<0.0013	0.0063	0.0024	0.036	<0.0021	<0.0013		0.0581	
01/18/11	0.0073	<0.0029	<0.0011	0.0076	<0.0013	0.037	0.0011	0.049	<0.0021	<0.0013		0.1020	
02/09/11	0.0036	<0.0029	<0.0011	0.0073	<0.0013	0.011	0.0013	0.039	<0.0021	<0.0013		0.0622	
04/12/11	0.012	<0.0029	<0.0011	0.0031	<0.0013	0.0032	<0.0011	0.026	<0.0021	<0.0013		0.0443	
05/24/11	0.0052	<0.0024	<0.0021	0.015	<0.0017	0.018	<0.0015	0.032	<0.0021	<0.0017		0.070	
06/09/11	0.011	0.0032	<0.0021	0.012	<0.0017	0.019	0.0044	0.046	<0.0021	<0.0017		0.0956	
07/13/11	0.0094	0.0027	<0.0021	0.0083	<0.0017	0.011	<0.0015	0.026	<0.0021	<0.0017		0.0574	
08/10/11	0.0088	0.0029	<0.0021	0.011	<0.0017	0.0054	0.0015	0.045	<0.0021	<0.0017		0.0746	
10/17/11	0.0095	0.0031	<0.0021	0.0021	<0.0017	0.0050	<0.0015	0.013	<0.0021	<0.0017		0.0327	
11/30/11	0.0051	<0.0024	<0.0021	0.010	<0.0017	0.012	<0.0015	0.046	<0.0021	<0.0017		0.0731	
12/21/11	0.011	0.0028	<0.0021	0.011	<0.0017	0.0047	<0.0015	0.031	<0.0021	<0.0017		0.0605	
01/24/12	0.015	0.0043	<0.0021	0.0053	<0.0017	0.0061	<0.0015	0.047	<0.0021	<0.0017		0.0777	
02/21/12	0.0081	<0.0024	<0.0021	0.0048	<0.0017	0.0081	0.0020	0.028	<0.0021	<0.0017		0.0510	
03/14/12	0.0078	0.0024	<0.0021	0.010	<0.0017	0.016	0.0020	0.054	<0.0021	<0.0017		0.0922	
04/19/12	0.0079	<0.0024	<0.0021	0.012	<0.0017	0.012	0.0023	0.038	<0.0021	<0.0017		0.0722	
05/30/12	0.0084	0.0025	<0.0021	0.0096	<0.0017	0.0053	<0.0015	0.042	<0.0021	<0.0017		0.0678	
06/28/12	0.017	0.0034	<0.0021	0.0035	<0.0017	0.0064	<0.0015	0.020	<0.0021	<0.0017		0.0503	
07/23/12	0.018	0.0055	<0.0021	0.0070	<0.0017	0.013	<0.0015	0.031	<0.0021	0.0030		0.0775	
08/08/12	0.035	0.0039	<0.0021	0.012	<0.0017	0.011	<0.0015	0.033	<0.0021	<0.0017		0.0949	
09/12/12	0.0095	<0.0024	<0.0026	0.010	<0.0017	0.0063	<0.0015	0.048	<0.0021	<0.0017		0.0738	
10/17/12	0.011	<0.0024	<0.0040	0.0024	<0.0017	0.0063	<0.0015	0.016	<0.0021	<0.0017		0.0357	
11/20/12	0.0068	<0.0024	<0.0040	0.011	<0.0017	0.030	<0.0015	0.048	<0.0021	0.0094		0.1052	
12/26/12	0.0071	<0.0024	<0.0040	0.0090	<0.0017	0.0078	<0.0015	0.032	<0.0021	<0.0017		0.0559	
01/10/13	0.0080	0.0033	<0.0040	0.0079	<0.0017	0.0059	<0.0015	0.037	<0.0021	<0.0017		0.0621	
02/25/13	0.782	0.776	<0.00097	0.0143	0.0032	0.0478	0.0097	0.0376	0.0088	0.0124		1.6918	
04/04/13	0.0096	0.0027	<0.00091	0.0072	<0.0015	0.0079	0.0018	0.0306	<0.00092	<0.0045		0.0598	
05/09/13	0.0134	0.0053	<0.00056	0.0061	0.0024	0.0076	0.0052	0.0193	<0.00073	0.0102		0.0695	
06/13/13	0.011	0.0025	<0.001	<0.0015	<0.0016	0.0038	0.0018	0.0155	<0.001	<0.0049		0.0346	
07/11/13	0.0032	0.0020	<0.00075	0.0070	<0.0012	0.0089	0.0020	0.0194	<0.00076	<0.0036		0.0425	
08/06/13	0.0056	0.011	<0.00075	0.0067	0.0047	0.0106	0.0188	0.0222	<0.00076	0.0251		0.1047	
09/26/13	0.0170	0.0057	<0.00091	0.0085	0.0335	0.0090	0.0635	0.0227	<0.00092	0.1562		0.3161	
10/17/13	0.0038	0.0018	<0.00072	0.0112	<0.0012	0.0079	0.0034	0.0381	<0.00074	0.0052		0.0714	
11/21/13	0.0163	0.0056	<0.00094	0.0044	0.0026	0.0096	0.0032	0.0189	<0.00096	0.0064		0.0670	
12/23/13	0.0558	0.0183	<0.00094	0.0063	0.002	0.0089	0.0116	0.0235	0.0014	0.0069		0.1347	

TABLE 1

SUMMARY OF MRDS SVE SYSTEM EXHAUST GAS ANALYTICAL RESULTS (JANUARY 2004 - JUNE 2020)

Date	Detected Target Compound List Volatile Organic Compound Concentrations ⁽¹⁾												TCL VOCs
	Acetone RQ	2-Butanone RQ	Chloroethane	1,1-DCA	Ethylbenzene	PCE	Toluene RQ	TCA	TCE RQ	Xylenes RQ			
01/28/14	0.0142	0.0026	<0.00072	0.0072	<0.0012	0.0072	0.0026	0.0204	<0.00074	<0.0036		0.0542	
02/25/14	0.0095	0.0103	<0.00078	0.0072	<0.0013	0.0104	0.0017	0.0341	<0.00079	<0.0038		0.0732	
03/27/14	0.0093	0.0021	<0.00080	0.0064	<0.0013	0.0114	0.0057	0.0227	<0.00082	0.0056		0.0632	
04/18/14	0.0176	0.0078	<0.00091	0.0087	0.0508	0.0096	0.0014	0.0293	<0.00092	0.423		0.5482	
05/22/14	0.0282	0.0056	<0.00091	0.0064	<0.0015	0.0066	<0.0013	0.0200	<0.00092	<0.0045		0.0668	
06/18/14	<0.0035	<0.00086	<0.00078	0.0012	<0.0013	<0.00099	0.0015	0.0046	<0.00079	<0.0038		0.0073	
07/25/14	0.0051	0.0022	<0.00075	0.0043	<0.0012	0.0114	<0.0011	0.0174	<0.00076	<0.0055		0.0404	
08/20/14	0.0140	0.0022	<0.00072	0.0089	<0.0012	0.0096	0.0026	0.0325	<0.00074	0.0036 U		0.0734	
09/17/14	<0.0032	0.00083	<0.00072	0.0110	<0.0012	0.0070	<0.0010	0.0274	<0.00074	<0.0036		0.0462	
10/30/14	<0.0034	<0.00083	<0.00075	0.0160	<0.0012	0.0172	<0.0011	0.0754	<0.00076	<0.0036		0.1086	
11/21/14	0.0101	0.0023	<0.00072	0.0085	0.0068	0.0082	0.0030	0.0257	<0.00074	0.0542		0.1188	
12/03/14	0.0086	0.0018 J	<0.00024	0.0068	<0.00027	0.0204	0.0020 J	0.0380	<0.00027	<0.00087		0.0776	
03/23/15	<0.0016	0.00057 J	<0.00022	0.0049	<0.00024	0.0075	0.00061 J	0.0167	<0.00024	0.00195 J		0.0322	
06/15/15	0.0022 J	0.0050	<0.00029	0.0119	<0.00063	0.0123	<0.00023	0.0334	<0.00041	<0.00172		0.0648	
09/22/15	0.0032 J	0.0020 J	<0.00027	0.0123	<0.00059	0.0105	0.0065	0.0282	0.0013	0.00219 J,U		0.0662	
12/07/15	0.0065 J	0.0021 J	<0.00026	0.0114	<0.00057	0.0170	0.0022	0.0603	0.00088	0.00187 J,U		0.1023	
01/04/16	0.0042 J	<0.0020	<0.00042	0.0148	<0.00059	0.0214	<0.00051	0.0738	<0.00037	0.00395 J		0.11815	
02/02/16	0.0036	<0.00031	<0.00026	0.0147	<0.00057	0.0066	0.001 J	0.0455	<0.00037	0.00197 J,U		0.07337	
03/22/16	0.005	0.0019 J	<0.00027	0.0126	<0.00059	0.0175	<0.00021	0.0698	0.00067 J	0.00269 J		0.11016	
06/14/16	--	--	--	0.0051	--	0.0159	--	0.0245	0.00089	--		0.04639	
08/29/16	--	--	--	0.0168	--	0.0238	--	0.0437	0.0013	--		0.0856	
12/06/16	--	--	--	0.0081	--	0.0144	--	0.0301	0.00120	--		0.0538	
03/21/17	--	--	--	0.0146	--	0.0175	--	0.107	0.00090	--		0.1400	
06/12/17	--	--	--	0.0188	--	0.0135	--	0.114	0.00074 J	--		0.14704	
08/29/17	--	--	--	0.0116	--	0.0056	--	0.0264	0.00036 U	--		0.04396	
12/14/17	--	--	--	0.00033	--	0.0057	--	0.0350	0.0011 J	--		0.04213	
03/27/18	--	--	--	0.0133	--	0.0142	--	0.0797	0.00066 J	--		0.10786	
06/18/18	--	--	--	0.0192	--	0.0188	--	0.1220	0.0048 J	--		0.16480	
08/13/18	--	--	--	0.0145	--	0.0109	--	0.0384	0.0016	--		0.0654	
12/11/18	--	--	--	0.0100	--	0.0109	--	0.0342	0.00034 U	--		0.05544	
03/26/19	--	--	--	0.0141	--	0.0159	--	0.0839	0.00064 J	--		0.11454	
06/10/19	--	--	--	0.0189	--	0.0167	--	0.1050	0.00084	--		0.14144	
08/20/19	--	--	--	0.0152	--	0.0055	--	0.0313	0.00059 J	--		0.05259	
12/04/19	--	--	--	0.0115	--	0.0132	--	0.0493	0.00064 J	--		0.07464	
03/24/20	--	--	--	0.0221	--	0.0231	--	0.1460	0.00098 J	--		0.19218	
06/10/20	--	--	--	0.0251	--	0.0187	--	0.1270	0.00077	--		0.17157	

NOTES:

Concentrations are in micrograms per liter (µg/ℓ).

Continuous, full-time operation of the SVE began on 10/28/98.

1,1-DCA = 1,1-Dichloroethane.

PCE = Tetrachloroethylene.

TCA = 1,1,1-Trichloroethane.

TCE = Trichloroethylene.

J = Estimated concentration below laboratory quantitation level.

RQ = Results qualifier.

TCL VOC = Target compound list volatile organic compound.

TCL VOCs = Summation of detected TCL VOC concentrations. Includes xylenes, prior to 06/14/16, if one xylene isomer-type was detected and the other was not.

U = Indicates either VOC analyzed for, but not detected, or one of the two xylene isomer-types (i.e., m&p-Xylene or o-Xylene) was analyzed for, but not detected.

-- = Not analyzed.

FOOTNOTE:

(1) Includes only those TCL VOCs detected at concentrations at or above 0.1 µg/ℓ in one or more samples. In addition, starting on 06/14/16, the analytes include 1,1-DCA; PCE; TCA; TCE only, as approved by both agencies.

NATIONAL PRESTO INDUSTRIES, INC.
EAU CLAIRE, WISCONSIN

TABLE 2

EVALUATION OF MRDS SVE SYSTEM EXHAUST GAS ANALYTICAL DATA (JUNE 2016 - JUNE 2020)

Date	NPI VOC Concentration ($\mu\text{g}/\ell$) and Results Qualifier (RQ)				NPI VOCs	Comments				
	1,1-DCA	RQ	PCE	RQ			TCA	RQ	TCE	RQ
06/14/16	0.0051		0.0159		0.0245		0.00089		0.0464	
08/29/16	0.0168		0.0238		0.0437		0.0013		0.0856	
12/06/16	0.0081		0.0144		0.0301		0.00120		0.0538	Start of first trial seasonal shutdown
03/21/17	0.0146		0.0175		0.107		0.00090		0.1400	
06/12/17	0.0188		0.0135		0.114		0.00074	J	0.1470	End of first trial seasonal shutdown
08/29/17	0.0116		0.0056		0.0264		0.00036	U	0.0440	
12/14/17	0.00033	U	0.0057		0.0350		0.0011	J	0.04213	Start of second trial seasonal shutdown
03/27/18	0.0133		0.0142		0.0797		0.00066	J	0.10786	
06/18/18	0.0192		0.0188		0.122		0.0048	J	0.1648	End of second trial seasonal shutdown
08/13/18	0.0145		0.0109		0.0384		0.0016		0.0654	
12/11/18	0.0100		0.0109		0.0342		0.00034	U	0.05544	Third trial shutdown started 12/14/18
03/26/19	0.0141		0.0159		0.0839		0.00064	J	0.11454	
06/10/19	0.0189		0.0167		0.105		0.00084		0.14144	End of third trial seasonal shutdown
08/20/19	0.0152		0.0055		0.0313		0.00059	J	0.05259	
12/04/19	0.0115		0.0132		0.0493		0.00064	J	0.07464	Start of fourth trial seasonal shutdown
03/24/20	0.0221		0.0231		0.146		0.00098	J	0.19218	
06/10/20	0.0251		0.0187		0.127		0.00077		0.17157	End of fourth trial seasonal shutdown
Fractional Change Compared to 12/06/16 Concentration for 03/21/17 and 06/12/17 Concentrations										
03/21/17	1.80		1.22		3.6		0.75		2.6	
06/12/17	2.32		0.94		3.8		0.62		2.7	
Fractional Change Compared to 12/14/17 Concentration for 03/27/18 and 06/18/18 Concentrations										
03/27/18	40.3		2.5		2.3		0.60		2.6	
06/18/18	58.2		3.3		3.5		4.4		3.9	
Fractional Change Compared to 12/11/18 Concentration for 03/26/19 and 06/10/19 Concentrations										
03/26/19	1.41		1.46		2.5		1.88		2.1	
06/10/19	1.89		1.53		3.1		2.5		2.6	
Fractional Change Compared to 12/04/19 Concentration for 03/24/20 and 06/10/20 Concentrations										
03/24/20	1.92		1.75		3.0		1.53		2.6	
06/10/20	2.2		1.42		2.6		1.20		2.3	
Ratio of 1/10 th Threshold Concentration for TCA (threshold = 60 $\mu\text{g}/\ell$) and TCE (threshold = 1.0 $\mu\text{g}/\ell$) to measured concentration										
03/21/17	na		na		56		111		na	
06/12/17	na		na		53		135		na	
03/27/18	na		na		75		152		na	
06/18/18	na		na		49		21		na	
03/26/19	na		na		72		156		na	
06/10/19	na		na		57		119		na	
03/24/20	na		na		41		102		na	
06/10/20	na		na		47		130		na	

NOTES:

NPI VOC concentrations are in micrograms per liter ($\mu\text{g}/\ell$).

See Page 2 for example calculations.

1,1-DCA = 1,1-Dichloroethane.

PCE = Tetrachloroethylene.

TCA = 1,1,1-Trichloroethane.

TCE = Trichloroethylene.

RQ = Results qualifier.

J = Estimated concentration below laboratory quantitation level.

na = Not applicable for ratio comparisons.

NPI VOCs = Summation of the detected NPI VOC concentrations.

U = Indicates compound was analyzed for, but not detected.

TABLE 2

EVALUATION OF MRDS SVE SYSTEM EXHAUST GAS ANALYTICAL DATA (JUNE 2016 - JUNE 2020)

EXAMPLE CALCULATIONS:

Fractional change in TCA concentrations, 03/21/17 compared to 12/06/16:

$$\frac{\text{TCA on 03/21/17}}{\text{TCA on 12/06/16}} = \frac{0.107}{0.0301} = 3.6$$

Ratio of one-tenth threshold concentration (60 µg/ℓ) to measured concentration for TCA on 03/21/17:

$$\frac{0.1 \times \text{TCA threshold}}{\text{TCA on 03/21/17}} = \frac{6.0}{0.107} = 56$$

Ratio of one-tenth threshold concentration (1.0 µg/ℓ) to measured concentration for TCE on 03/21/17:

$$\frac{0.1 \times \text{TCE threshold}}{\text{TCE on 03/21/17}} = \frac{0.10}{0.00090} = 111$$