

FID# 241469250

BRIS 410# 0241000269

DEPARTMENT OF  
NATURAL RESOURCES  
SED

March 27, 1998

1998 MAR 30 PM 2:00

Ms. Nancy Ryan  
Hydrogeologist  
Wisconsin Department of Natural Resources  
2300 N. Dr. Martin Luther King Jr. Drive  
P.O. Box 12436  
Milwaukee, WI 53212

Subject: Remediation Documentation Report for the DOT-Autowrecker's Property

Dear Nancy:

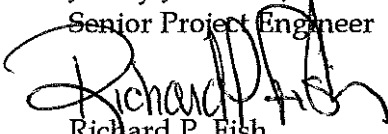
Enclosed is a copy of the Remediation Documentation Report for the WisDOT-Autowrecker's Property. This report summarizes the activities that were performed to in accordance with the previously submitted Remedial Action plan. The remediation activities included the excavation and off-site disposal of fill materials containing PCB concentrations greater than 50 ppm at a licensed Toxic Substance Control Act (TSCA) disposal facility, the disposal of fill materials with high levels of petroleum-impacts at a licensed bio-pile facility, and the constructive reuse of the remaining fill materials beneath the Lake Parkway.

If you have any questions regarding this information, please call us at 608-831-4444.

Sincerely,



Jeffrey J. Bremer, P.E.  
Senior Project Engineer



Richard P. Fish  
Vice President  
Government and Infrastructure

cc: Ken Wade, WisDOT  
Karl Pierce, WisDOT  
Kevin Gehrman, WisDOT



RESIDUALS MANAGEMENT TECHNOLOGY, INC., OHIO

5890 SAWMILL ROAD, SUITE 100

DUBLIN, OH = 43017-1591

614/793-0026 = 614/793-0151 FAX

1998 MAR 30 PM 2:00

REMEDICATION DOCUMENTATION  
REPORT FOR THE  
WisDOT -AUTOWRECKER'S PROPERTY  
ST. FRANCIS, WISCONSIN

PREPARED BY  
RMT, INC.  
MADISON, WISCONSIN

LAKE PARKWAY PROJECT  
1300-05-79

March 1998



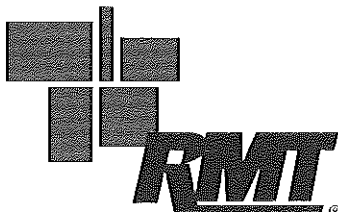
Jeffrey J. Bremer, P.E.  
Senior Project Engineer

A handwritten signature of James A. Madden in cursive script.

James A. Madden  
Senior Project Coordinator

A handwritten signature of Richard P. Fish in cursive script.

Richard P. Fish  
Vice President  
Government and Infrastructure





# Table of Contents

---

Executive Summary .....	ii
1. Introduction .....	1
1.1 Background.....	1
1.2 Purpose and Scope .....	1
2. Remedial Action Objectives .....	3
3. Remedial Approach.....	4
4. Remediation Activities .....	5
4.1 Site Preparation.....	5
4.2 PCB-Impacted Fill Remediation .....	5
4.3 VOC-Impacted Fill Remediation.....	6
4.4 Site Regrading.....	6
4.5 Drums and Debris .....	7
4.5.1 Management of Drums.....	7
4.5.2 Debris Disposal.....	8
4.6 Planned Highway Construction.....	8

## List of Figures

Figure 1	Site Location Map
Figure 2	Remediation Plan

## List of Tables

Table 1	Autowrecker's Schedule of Required Management Methods for Fill Materials
Table 2	Summary of PCB-Impacted Fill Removal
Table 3	Summary of PVOC-Impacted Fill Removal

## List of Appendices

Appendix A	WDNR Approval Letter
Appendix B	Photographic Documentation
Appendix C	Monitoring Well Abandonment Forms
Appendix D	PCB Disposal Manifests
Appendix E	PVOC Disposal Summary
Appendix F	Drum Characterization Data
Appendix G	Drum Disposal Manifests



## Executive Summary

---

In preparation for the Lake Parkway highway construction project, the WisDOT easement across the Autowrecker's Property was successfully remediated in accordance with the WDNR-approved Workplan for the Management of Impacted Fill Materials. The remediation included the removal and off-site disposal of the most heavily-impacted soils and on-site beneficial reuse of the remaining impacted soils as part of the highway construction. The remediation activities were performed from September through October 1997.

Approximately 280 cubic yards (420 tons) of fill that contained PCB concentrations greater than the Toxic Substances Control Act (TSCA) limit of 50 mg/kg were excavated, manifested, and transported to a licensed TSCA landfill for disposal.

Approximately 3,500 cubic yards (5,305 tons) of fill that contained elevated petroleum volatile organic compound (PVOC) concentrations above the site-specific action level established for this project were excavated, manifested, and transported to a biopile facility for treatment. In order to lower the grade on-site to the extent necessary to accommodate the future highway, approximately 1,000 additional cubic yards (1,426 tons) of material was also removed from the site. This material was also manifested and transported to a biopile facility.

During the excavation activities, several drums were encountered. These drums were partially crushed and contained unknown contents. When encountered, these drums were temporarily staged on-site and were characterized based on visual observations and laboratory analysis. Based on the laboratory characterization results, 19 tons of drums and associated waste materials were disposed as a hazardous waste for lead and 6 tons were disposed as nonhazardous wastes.

The remaining impacted fill was regraded on-site to provide constructive reuse of the material as part of the Lake Parkway Project. In order to prevent direct contact with the impacted fill material during the planned highway construction activities, a 6-inch protective gravel barrier was placed over the fill.



# Section 1

## Introduction

---

### 1.1 Background

The Wisconsin Department of Transportation (WisDOT) is constructing a four-lane divided highway (Lake Parkway) that will extend I-794 from the city of Milwaukee into the city of Cudahy. The Lake Parkway will be located along the former Chicago and Northwestern Railroad right-of-way, part of which was acquired by the WisDOT for this project. The WisDOT also acquired property rights adjacent to the railroad for the construction of the Lake Parkway. One such property, from which the WisDOT acquired easements for highway construction is located immediately south of Norwich Avenue in the city of St. Francis and is referred to as the WisDOT-Autowrecker's Property. The site is located in the NE 1/4 of the NW 1/4 of Section 22, Township 6 north, Range 22 east (Figure 1).

Previous investigations of the site have identified the presence of fill that is impacted with volatile organic compounds (VOCs) and Polychlorinated Biphenyls (PCBs). This impacted fill appears to be the result of miscellaneous filling/dumping that has occurred at the site and likely is not a result of a spill or release at the site.

In April 1997, a Workplan for the Management of Impacted Fill Materials (Workplan) was prepared by RMT, Inc. (RMT), and was submitted to Ms. Nancy Ryan of the Wisconsin Department of Natural Resources (WDNR) for review. This Workplan was subsequently modified by the WisDOT in a letter to Ms. Nancy Ryan dated June 25, 1997. Ms. Ryan approved the modified Workplan in a letter dated June 26, 1997. Copies of these approval letters are presented in Appendix A.

RMT was retained by the WisDOT to manage the impacted fill material at the site in accordance with the modified Workplan and to regrade the site for future highway grades. RMT retained Superior Special Services, Inc. (Superior), to perform the construction activities associated with this work.

### 1.2 Purpose and Scope

The purpose of this report is to provide documentation of the soil/fill construction activities at the site. The management of impacted fill and site regrading was performed in substantial conformance with the WDNR-approved Workplan.

The scope of this report was prepared based on the following:

- Observation and documentation of the removal and disposal of PCB-impacted fill
- Observation and documentation of the removal and disposal of PVOC-impacted fill
- Observation and documentation of the beneficial reuse of the remaining fill materials and site regrading activities



## Section 2

# Remedial Action Objectives

---

To address the environmental concerns at the site, remedial objectives addressing the protection of human health and the environment were developed. These objectives were developed in conjunction with the proposed highway construction plans.

As part of highway construction, approximately 4 to 5 feet of fill must be excavated and removed from the site. The site will then be developed to include paved traffic lanes for the Lake Parkway, including on-/off-ramps. Therefore, the remedial action objectives for the project can be summarized as follows:

- To excavate fill from select areas that contain PCBs at concentrations greater than 50 mg/kg and to dispose of this material off-site at a TSCA landfill
- To excavate fill from select areas that contain elevated PVOC concentrations above site-specific action levels established for this project and transport this material off-site for treatment in a biopile. The fill materials requiring off-site disposal due to elevated PVOC concentrations were identified in the WDNR approval of the Workplan (see Appendix A).
- To regrade and constructively reuse fill that contains low-level PVOC and/or PCB concentrations beneath engineered structures as part of highway construction.

Following regrading, a protective gravel barrier was placed over the remaining impacted fill material to prevent direct human contact with these materials during future highway construction activities.



## Section 3

# Remedial Approach

---

In January 1997, RMT used a systematic approach to characterize the fill materials within the WisDOT easement. The results of earlier investigations indicated that PCBs and PVOCs were the constituents of primary concern. Therefore, the investigation focused on locating fill materials which contained PCB and/or PVOC concentrations that were not acceptable for beneficial reuse on-site. The investigation was performed by establishing a grid system across the site. This grid system resulted in 38 cells, as shown on Figure 2. The cells were approximately 25 feet wide by 30-37 feet long. One soil boring was then performed in each cell and soil samples were continuously collected to the estimated depth of groundwater. Each soil sample collected (190 samples) was laboratory-analyzed for PCBs. In addition, 123 samples were also selected for laboratory analysis for PVOCs based on visual, olfactory, and PID indications of possible impacts. The results of these analysis were summarized in the Workplan for Management of Impacted Fill Materials (RMT, 1997). Results of these analyses were used to determine how the soil/fill present within each 2-foot-thick cell would be managed. Soil samples which resulted in a PCB concentration greater than 50 mg/kg required that the soil/fill material from the corresponding 2-foot-thick cell be managed, transported, and disposed as a TSCA waste. In addition, through discussions between the WisDOT and the WDNR, the cells which contained PVOC concentrations determined to be unacceptable for on-site beneficial reuse were also identified (see Appendix A). Each 2-foot-thick cell which resulted in PCB concentrations less than 50 mg/kg and PVOC concentrations less than site-specific action levels established for this project, were acceptable for beneficial reuse on-site. However, the WDNR did specify that fill material from certain cell locations could not be reused at the soil/groundwater interface. Therefore, in order to simplify construction activities, RMT required that some of these cells, the cells with the potential to be reused near the groundwater table, be disposed off-site at a biopile. Table 1 is a summary of how each 2-foot-thick cell within the project limits was to be managed based on these criteria.





## Section 4

# Remediation Activities

---

Remediation activities began on September 15, 1997, and were substantially complete by October 31, 1997. Photographs of the remediation activities are included in Appendix B.

### 4.1 Site Preparation

Site preparation activities were performed in advance of the remedial activities. The site preparation activities consisted of the clearing and grubbing of vegetation, the installation of an access road, and the installation of a silt fence, construction fencing, and the placement of a temporary security fence along the temporary limited easement. The vegetation and debris were transported to Emerald Park Landfill in Muskego, Wisconsin, for disposal.

Upon completion of the clearing and grubbing, washed stone was placed, leveled, and compacted to construct the access road. The access road provided a stable base for truck access to the site and prevented tracking of impacted fill off-site. Trucks hauling material off-site for disposal remained on the access road.

Construction fencing was installed around the perimeter of the site to restrict public access, and a silt fence was installed to prevent soil erosion.

A temporary security fence was placed along the temporary limited easement at the active auto salvage yard. The temporary security fence is a 6-foot-high cyclone fence with approximately 2 feet of barbed wire across the top. In addition, a visual barrier was added with the placement of plastic slats into the fencing.

Four existing monitoring wells were abandoned by RMT and Superior during the remediation project. These wells were abandoned because they were located in construction areas. Copies of the well abandonment forms are presented in Appendix C.

### 4.2 PCB-Impacted Fill Remediation

The results of the laboratory analysis for PCBs from the soil borings showed that four sample intervals contained PCB concentrations in excess of 50 mg/kg. The sample intervals designated for excavation and disposal as a TSCA waste were Cell E (0 feet to 2 feet) and Cell M (2 feet to 4 feet, 6 feet to 8 feet, and 8 feet to 10 feet).

In cell M, groundwater was observed at a depth of approximately 8-10 feet below ground surface (bgs). In order to remove as much of the PCB-impacted fill as possible, the impacted material was excavated below the saturated elevation. The saturated material was excavated and placed immediately adjacent to cell M and allowed to de-water before loading and transporting for disposal.

On September 23, 24, and 30, 1997, approximately 280 cubic yards (420 tons) of fill was excavated from these locations and transported to a licensed TSCA landfill for disposal. The PCB-impacted fill was manifested and transported by Advanced Environmental Technical Services (AETS) to the CWM Chemical Services, Inc., Landfill in Model City, New York. Copies of the PCB disposal manifests are presented in Appendix D.

The removal of the PCB-impacted fill material from the cells was documented by RMT based on visual observations, taped field measurements, and survey data. A summary of the PCB-impacted soil removal is presented in Table 2.

### **4.3 VOC-Impacted Fill Remediation**

The results of the laboratory analysis for PVOCs from the soil borings identified 52 sample intervals containing elevated PVOC concentrations, which were designated for removal based on the WDNR approval of the Workplan. From October 1 through October 10, 1997, approximately 3,500 cubic yards (5,305 tons) of PVOC-impacted fill were removed and transported to biopile for remediation. The PVOC-impacted fill was excavated from the gridded cells at the designated intervals, as identified from the laboratory analysis, and as shown in Table 1 and on Figure 2. The PVOC-impacted fill was manifested and transported to the Superior Emerald Park (Emerald Park) Biopile, in Muskego, Wisconsin. A summary of the PVOC-impacted fill removal is presented in Table 3. Copies of the daily tonnage summaries for the PVOC-impacted fill transported to the biopile are presented in Appendix E. Copies of the manifests are on file and are available upon request.

### **4.4 Site Regrading**

When the removal of fill containing elevated PCB and PVOC concentrations was complete, the remaining fill was regraded to provide constructive reuse of the material as part of the Lake Parkway project. The fill material was leveled and compacted beneath the subgrade of the highway. Due to an excess of material, approximately 1,000 additional cubic yards (1,426 tons) of fill material were taken to the biopile. On October 20, 21, and 28, 1997, the additional fill material was manifested and transported to Emerald Park. Copies of the daily tonnage summaries are included in Appendix E, and copies of the manifests are on file.

In order to provide a protective barrier during the installation of a future storm sewer, clean clay material was placed and compacted along the alignment of the future storm sewer in cells M and MM (see Figure 2).

Upon completion of the regrading, the remaining fill material was covered with a protective barrier to prevent direct contact with the impacted fill during future highway construction activities. Approximately 6 inches of gravel were placed over the surface of the fill, leveled and compacted. The sideslopes of the fill material were reshaped and covered with clean soil.

## 4.5 Drums and Debris

### 4.5.1 Management of Drums

During the excavation of impacted fill, several drums were encountered beneath the surface of the existing fill material. The drums were discovered along the eastern side of the gridded cells on the northern end (cells MM through RR). Some of the drums were crushed and empty, some contained fill material, and some contained unknown solids and semi-solids. Because of the unknown nature of the contents, the drums were temporarily staged on-site for further visual and laboratory characterization. Several additional drums were visible in the remaining easterly sidewall of the excavation; however, because the sidewall was outside of the temporary easement, the drums were left in-place.

Based on visual observations, the drums (and associated waste materials) were segregated into the following waste streams:

- Paint, resin, or adhesive solids (Waste Stream A)
- Foundry sand and slag (Waste Stream B)
- Asphaltic tar solids (Waste Stream C)
- Metal parts/plated debris (Waste Stream D)
- Soil with traces of the co-mingled products (Waste Stream E)
- Firebrick (Waste Stream F)

The visual characterization and segregation of the drums and associated waste materials was performed by Mr. Lindor Schmidt, Chemist of Superior Special Services, Inc.

Based on discussions between Superior Special Services and the WDNR Solid Waste Management staff, it was agreed that the waste would be combined into two waste

types: (1) drums which appeared to contain organic waste materials (Waste Streams A and C), and (2) drums which appeared to contain inorganic wastes (Waste Streams B, D, E, and F). A composite sample of each of these waste types was collected for a complete laboratory characterization to determine if the wastes were hazardous or nonhazardous. Results of this laboratory analysis indicated that the organic waste stream was nonhazardous and that the inorganic waste stream was hazardous for the characteristic of toxicity for lead. The laboratory analysis was performed by Specialized Assays, Inc. on composite samples provided by Superior Special Services, Inc. Notes from the visual observations and copies of the laboratory data sheets are contained in Appendix F.

On November 25, 1997, both the hazardous and nonhazardous drums (and associated waste materials) were transported off-site for disposal by Advanced Environmental Technical Services (AETS): 5.61 tons of nonhazardous wastes were transported to Orchard Ridge Landfill, Menomonee Falls, Wisconsin, for direct landfill disposal; 19.42 tons of hazardous waste were transported to AETS Controlled Waste Division, Menomonee Falls, Wisconsin, for stabilization treatment and subsequent landfill disposal. Copies of the disposal tickets are included in Appendix G.

#### **4.5.2 Debris Disposal**

Other debris that was encountered during the remediation that was not compatible with the characterization profile of the biopile was segregated and temporarily stockpiled. The debris included mostly old tires, along with some metal storage containers and empty drums, and a few other miscellaneous objects. Upon completion of the remediation, approximately 22 tons of debris were transported to Emerald Park for disposal as a solid waste.

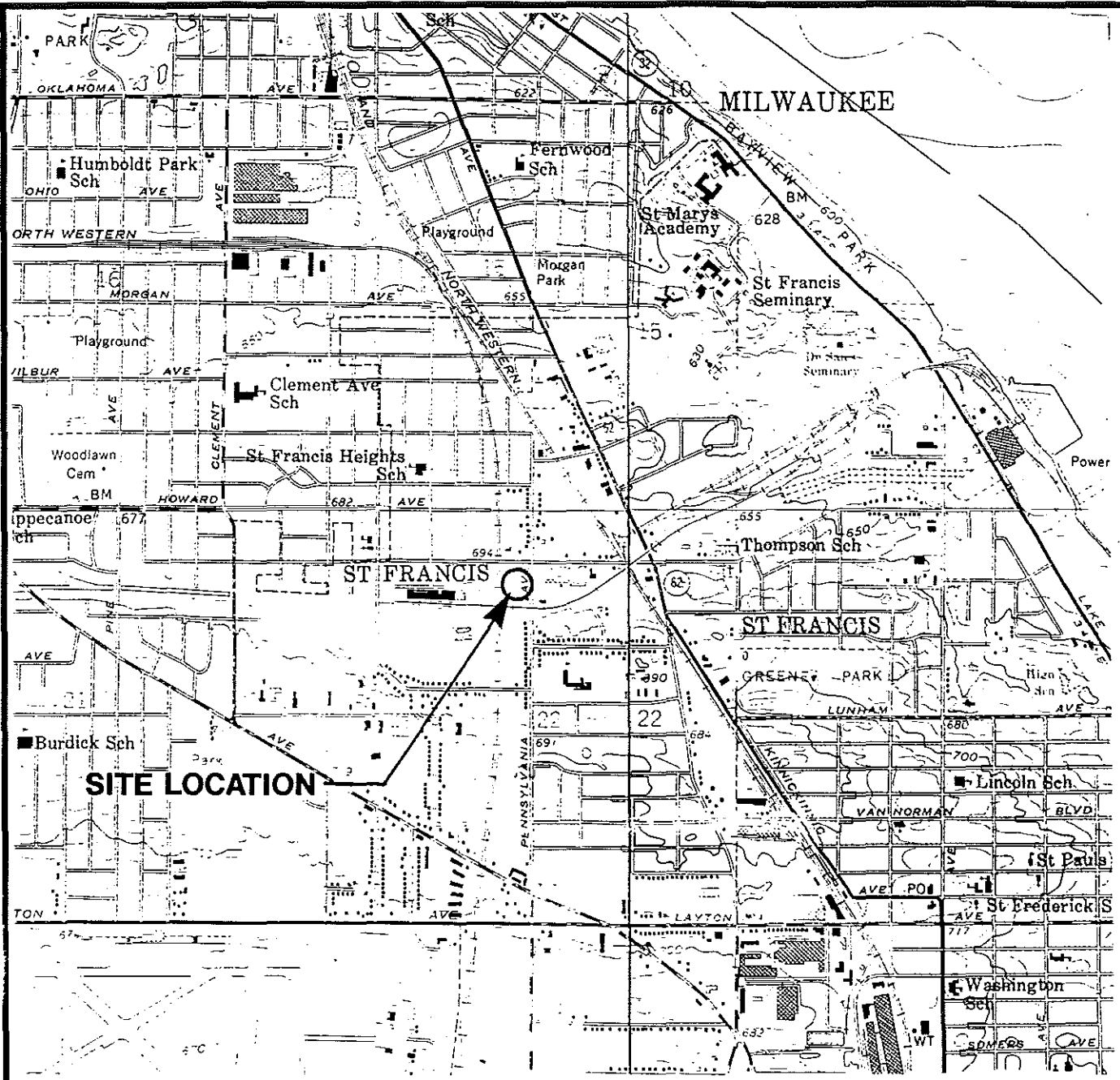
### **4.6 Planned Highway Construction**

The planned highway construction in this area will consist of two travel lanes in each direction with a median. In order to protect the existing Autowrecker's property, a 2-foot-high concrete retaining wall will be constructed along east line of the permanent highway easement. In order to provide a visual barrier along the entire east side of the Autowrecker's property, an 8-foot high permanent screening fence will be installed to replace the existing temporary security fence. The highway construction will result in the beneficial reuse area being capped with concrete pavement.

RMT COMPUTER AIDED DESIGN & DRAFTING

Plot Time: 2:36:16:11 PM  
Attached Xref's: No xref's Attached.

Operator Name: ben  
Scale: 1"=1'



STATE LOCATION



SCALE: 1"=2000'



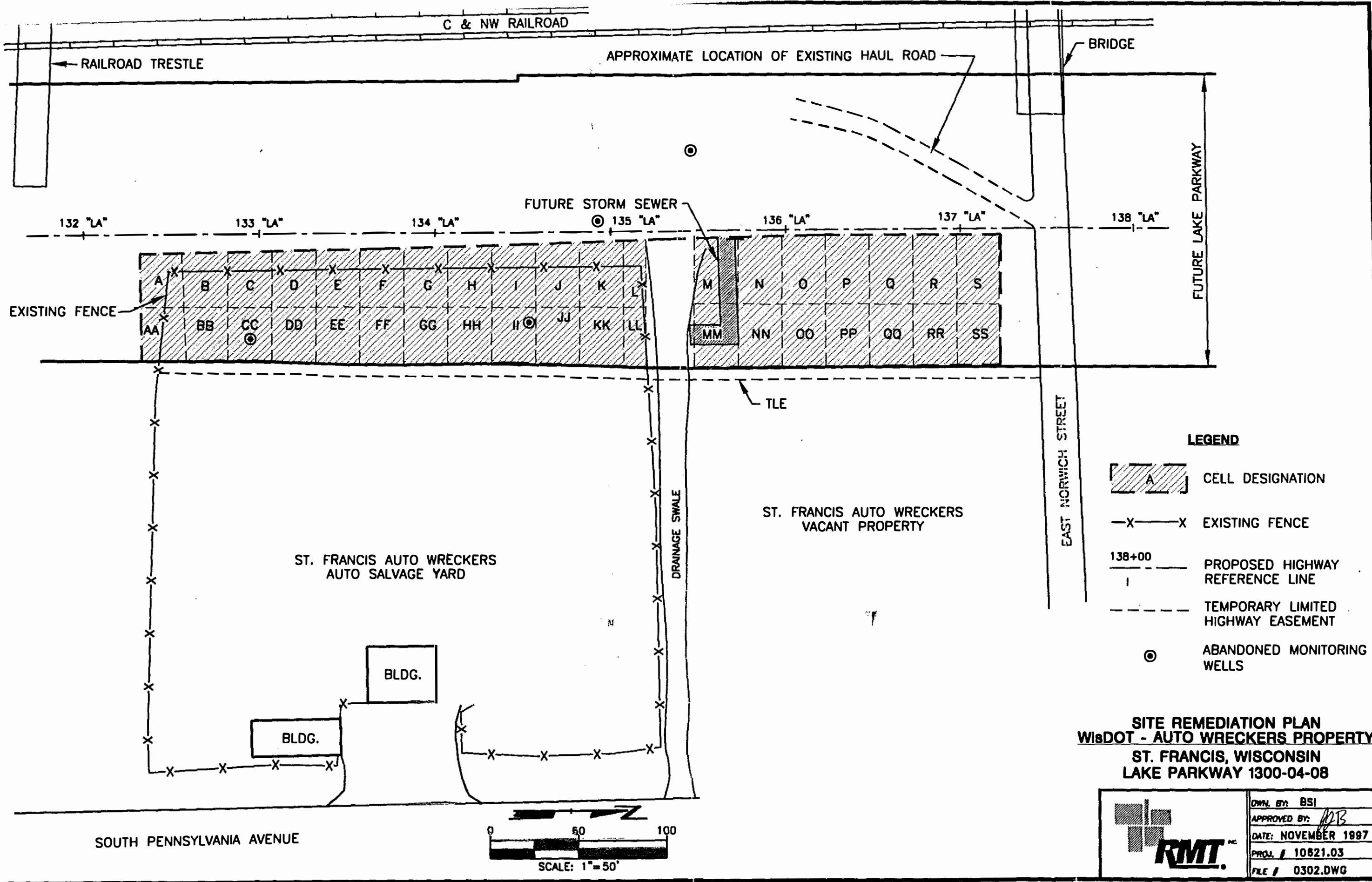
**SITE LOCATION MAP**  
**WisDOT - AUTO WRECKERS PROPERTY**



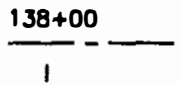


SOURCE: BASE MAP FROM GREENDALE AND SOUTH MILWAUKEE, WISCONSIN 7.5 MIN. USGS QUADRANGLE.

	DWN. BY: BSI
	APPROVED BY: <i>MB</i>
	DATE: NOVEMBER 1997
	PROJ. / 10621.03
	FILE / 0301.DWG

FIGURE 1

Drawing Name: J:\10621\03\0302.DWG  
 Operator Name: BSI  
 Scale: 1"=50'  
 Plot Date: Friday, November 14, 1997  
 Plot Time: 3:32:21 PM  
 Attached Xref's: No xref's Attached.



- LEGEND**
-  CELL DESIGNATION
  -  EXISTING FENCE
  -  PROPOSED HIGHWAY REFERENCE LINE
  -  TEMPORARY LIMITED HIGHWAY EASEMENT
  -  ABANDONED MONITORING WELLS

**SITE REMEDIATION PLAN**  
**WisDOT - AUTO WRECKERS PROPERTY**  
**ST. FRANCIS, WISCONSIN**  
**LAKE PARKWAY 1300-04-08**


	OWN. BY: BSI
	APPROVED BY: <i>[Signature]</i>
	DATE: NOVEMBER 1997
	PROJ. # 10621.03
FILE # 0302.DWG	

FIGURE 2

**Table 1**  
**Autowrecker's**  
**Schedule of Required Management Methods for Fill Materials**

Cell	Depth Below Existing Grade (feet)	Required Management Method for Fill Materials
		<b>NOTE: If material that is acceptable for regrading within the "Limits of Impacted Fill Requiring Management" is removed from these limits, this fill material must be disposed at a biopile in accordance with the specifications.</b>
A	0-2	May be regraded within the "Limits of Impacted Fill Requiring Management"
	2-4	May be regraded within the "Limits of Impacted Fill Requiring Management"
	4-6	May be regraded within the "Limits of Impacted Fill Requiring Management"
	6-8	May be regraded within the "Limits of Impacted Fill Requiring Management"
	8-10*	May be regraded within the "Limits of Impacted Fill Requiring Management"
AA	0-2	May be regraded within the "Limits of Impacted Fill Requiring Management"
	2-4	May be regraded within the "Limits of Impacted Fill Requiring Management"
	4-6	May be regraded within the "Limits of Impacted Fill Requiring Management"
	6-8	May be regraded within the "Limits of Impacted Fill Requiring Management"
	8-10*	May be regraded within the "Limits of Impacted Fill Requiring Management"
B	0-2	May be regraded within the "Limits of Impacted Fill Requiring Management"
	2-4	<b>Disposal at a biopile.</b>
	4-6	May be regraded within the "Limits of Impacted Fill Requiring Management"
	6-8	<b>Disposal at a biopile</b>
	8-10*	<b>Disposal at a biopile</b>
BB	0-2	May be regraded within the "Limits of Impacted Fill Requiring Management"
	2-4	May be regraded within the "Limits of Impacted Fill Requiring Management"
	4-6	May be regraded within the "Limits of Impacted Fill Requiring Management"
	6-8	May be regraded within the "Limits of Impacted Fill Requiring Management"
	8-10*	May be regraded within the "Limits of Impacted Fill Requiring Management"
C	0-2	May be regraded within the "Limits of Impacted Fill Requiring Management"
	2-4	May be regraded within the "Limits of Impacted Fill Requiring Management"
	4-6	May be regraded within the "Limits of Impacted Fill Requiring Management"
	6-8	May be regraded within the "Limits of Impacted Fill Requiring Management"
	8-10*	May be regraded within the "Limits of Impacted Fill Requiring Management"
CC	0-2	<b>Disposal at a biopile</b>
	2-4	<b>Disposal at a biopile</b>
	4-6	May be regraded within the "Limits of Impacted Fill Requiring Management"
	6-8	May be regraded within the "Limits of Impacted Fill Requiring Management"
	8-10*	May be regraded within the "Limits of Impacted Fill Requiring Management"

**Table 1 (continued)  
Autowrecker's  
Schedule of Required Management Methods for Fill Materials**

Cell	Depth Below Existing Grade (feet)	Required Management Method for Fill Materials
		<b>NOTE: If material that is acceptable for regrading within the "Limits of Impacted Fill Requiring Management" is removed from these limits, this fill material must be disposed at a biopile in accordance with the specifications.</b>
D	0-2	Disposal at a biopile
	2-4	Disposal at a biopile
	4-6	Disposal at a biopile
	6-8	May be regraded within the "Limits of Impacted Fill Requiring Management"
	8-10*	May be regraded within the "Limits of Impacted Fill Requiring Management"
DD	0-2	Disposal at a biopile
	2-4	Disposal at a biopile
	4-6	May be regraded within the "Limits of Impacted Fill Requiring Management"
	6-8	May be regraded within the "Limits of Impacted Fill Requiring Management"
	8-10*	May be regraded within the "Limits of Impacted Fill Requiring Management"
E	0-2	Disposal as a TSCA waste
	2-4	Disposal at a biopile
	4-6	Disposal at a biopile
	6-8	Disposal at a biopile
	8-10*	May be regraded within the "Limits of Impacted Fill Requiring Management"
EE	0-2	May be regraded within the "Limits of Impacted Fill Requiring Management"
	2-4	Disposal at a biopile
	4-6	Disposal at a biopile
	6-8	Disposal at a biopile
	8-10*	May be regraded within the "Limits of Impacted Fill Requiring Management"
F	0-2	May be regraded within the "Limits of Impacted Fill Requiring Management"
	2-4	May be regraded within the "Limits of Impacted Fill Requiring Management"
	4-6	May be regraded within the "Limits of Impacted Fill Requiring Management"
	6-8	May be regraded within the "Limits of Impacted Fill Requiring Management"
	8-10*	May be regraded within the "Limits of Impacted Fill Requiring Management"
FF	0-2	May be regraded within the "Limits of Impacted Fill Requiring Management"
	2-4	May be regraded within the "Limits of Impacted Fill Requiring Management"
	4-6	May be regraded within the "Limits of Impacted Fill Requiring Management"
	6-8	May be regraded within the "Limits of Impacted Fill Requiring Management"
	8-10*	May be regraded within the "Limits of Impacted Fill Requiring Management"



**Table 1 (continued)  
Autowrecker's  
Schedule of Required Management Methods for Fill Materials**

Cell	Depth Below Existing Grade (feet)	Required Management Method for Fill Materials
		<b>NOTE: If material that is acceptable for regrading within the "Limits of Impacted Fill Requiring Management" is removed from these limits, this fill material must be disposed at a biopile in accordance with the specifications.</b>
<b>G</b>	0-2	<b>Disposal at a biopile</b>
	2-4	May be regraded within the "Limits of Impacted Fill Requiring Management"
	4-6	May be regraded within the "Limits of Impacted Fill Requiring Management"
	6-8	May be regraded within the "Limits of Impacted Fill Requiring Management"
	8-10*	May be regraded within the "Limits of Impacted Fill Requiring Management"
<b>GG</b>	0-2	May be regraded within the "Limits of Impacted Fill Requiring Management"
	2-4	May be regraded within the "Limits of Impacted Fill Requiring Management"
	4-6	May be regraded within the "Limits of Impacted Fill Requiring Management"
	6-8	May be regraded within the "Limits of Impacted Fill Requiring Management"
	8-10*	May be regraded within the "Limits of Impacted Fill Requiring Management"
<b>H</b>	0-2	May be regraded within the "Limits of Impacted Fill Requiring Management"
	2-4	May be regraded within the "Limits of Impacted Fill Requiring Management"
	4-6	May be regraded within the "Limits of Impacted Fill Requiring Management"
	6-8	May be regraded within the "Limits of Impacted Fill Requiring Management"
	8-10*	May be regraded within the "Limits of Impacted Fill Requiring Management"
<b>HH</b>	0-2	May be regraded within the "Limits of Impacted Fill Requiring Management"
	2-4	<b>Disposal at a biopile</b>
	4-6	<b>Disposal at a biopile</b>
	6-8	<b>Disposal at a biopile</b>
	8-10*	<b>Disposal at a biopile</b>
<b>I</b>	0-2	May be regraded within the "Limits of Impacted Fill Requiring Management"
	2-4	<b>Disposal at a biopile</b>
	4-6	<b>Disposal at a biopile</b>
	6-8	May be regraded within the "Limits of Impacted Fill Requiring Management"
	8-10*	May be regraded within the "Limits of Impacted Fill Requiring Management"
<b>II</b>	0-2	May be regraded within the "Limits of Impacted Fill Requiring Management"
	2-4	<b>Disposal at a biopile</b>
	4-6	<b>Disposal at a biopile</b>
	6-8	<b>Disposal at a biopile</b>
	8-10*	<b>Disposal at a biopile</b>

**Table 1 (continued)**  
**Autowrecker's**  
**Schedule of Required Management Methods for Fill Materials**

Cell	Depth Below Existing Grade (feet)	Required Management Method for Fill Materials
		<b>NOTE: If material that is acceptable for regrading within the "Limits of Impacted Fill Requiring Management" is removed from these limits, this fill material must be disposed at a biopile in accordance with the specifications.</b>
J	0-2	May be regraded within the "Limits of Impacted Fill Requiring Management"
	2-4	May be regraded within the "Limits of Impacted Fill Requiring Management"
	4-6	May be regraded within the "Limits of Impacted Fill Requiring Management"
	6-8	May be regraded within the "Limits of Impacted Fill Requiring Management"
	8-10*	May be regraded within the "Limits of Impacted Fill Requiring Management"
JJ	0-2	May be regraded within the "Limits of Impacted Fill Requiring Management"
	2-4	May be regraded within the "Limits of Impacted Fill Requiring Management"
	4-6	May be regraded within the "Limits of Impacted Fill Requiring Management"
	6-8	May be regraded within the "Limits of Impacted Fill Requiring Management"
	8-10*	May be regraded within the "Limits of Impacted Fill Requiring Management"
K	0-2	May be regraded within the "Limits of Impacted Fill Requiring Management"
	2-4	May be regraded within the "Limits of Impacted Fill Requiring Management"
	4-6	<b>Disposal at a biopile</b>
	6-8	<b>Disposal at a biopile</b>
	8-10*	May be regraded within the "Limits of Impacted Fill Requiring Management"
KK	0-2	May be regraded within the "Limits of Impacted Fill Requiring Management"
	2-4	May be regraded within the "Limits of Impacted Fill Requiring Management"
	4-6	May be regraded within the "Limits of Impacted Fill Requiring Management"
	6-8	May be regraded within the "Limits of Impacted Fill Requiring Management"
	8-10*	May be regraded within the "Limits of Impacted Fill Requiring Management"
L	0-2	May be regraded within the "Limits of Impacted Fill Requiring Management"
	2-4	May be regraded within the "Limits of Impacted Fill Requiring Management"
	4-6	May be regraded within the "Limits of Impacted Fill Requiring Management"
	6-8	May be regraded within the "Limits of Impacted Fill Requiring Management"
	8-10*	May be regraded within the "Limits of Impacted Fill Requiring Management"
LL	0-2	May be regraded within the "Limits of Impacted Fill Requiring Management"
	2-4	May be regraded within the "Limits of Impacted Fill Requiring Management"
	4-6	May be regraded within the "Limits of Impacted Fill Requiring Management"
	6-8	May be regraded within the "Limits of Impacted Fill Requiring Management"
	8-10*	May be regraded within the "Limits of Impacted Fill Requiring Management"

**Table 1 (continued)**  
**Autowrecker's**  
**Schedule of Required Management Methods for Fill Materials**

Cell	Depth Below Existing Grade (feet)	Required Management Method for Fill Materials
		<b>NOTE: If material that is acceptable for regrading within the "Limits of Impacted Fill Requiring Management" is removed from these limits, this fill material must be disposed at a biopile in accordance with the specifications.</b>
M	0-2	May be regraded within the "Limits of Impacted Fill Requiring Management"
	2-4	<b>Disposal as a TSCA waste</b>
	4-6	<b>Disposal at a biopile</b>
	6-8	<b>Disposal as a TSCA waste</b>
	8-10*	<b>Disposal as a TSCA waste</b>
MM	0-2	May be regraded within the "Limits of Impacted Fill Requiring Management"
	2-4	<b>Disposal at a biopile</b>
	4-6	<b>Disposal at a biopile</b>
	6-8	<b>Disposal at a biopile</b>
	8-10*	<b>Disposal at a biopile</b>
N	0-2	May be regraded within the "Limits of Impacted Fill Requiring Management"
	2-4	May be regraded within the "Limits of Impacted Fill Requiring Management"
	4-6	<b>Disposal at a biopile</b>
	6-8	<b>Disposal at a biopile</b>
	8-10*	<b>Disposal at a biopile</b>
NN	0-2	May be regraded within the "Limits of Impacted Fill Requiring Management"
	2-4	<b>Disposal at a biopile</b>
	4-6	<b>Disposal at a biopile</b>
	6-8	<b>Disposal at a biopile</b>
	8-10*	<b>Disposal at a biopile</b>
O	0-2	<b>Disposal at a biopile</b>
	2-4	<b>Disposal at a biopile</b>
	4-6	<b>Disposal at a biopile</b>
	6-8	<b>Disposal at a biopile</b>
	8-10*	<b>Disposal at a biopile</b>
OO	0-2	May be regraded within the "Limits of Impacted Fill Requiring Management"
	2-4	May be regraded within the "Limits of Impacted Fill Requiring Management"
	4-6	<b>Disposal at a biopile</b>
	6-8	<b>Disposal at a biopile</b>
	8-10*	<b>Disposal at a biopile</b>

**Table 1 (continued)**  
**Autowrecker's**  
**Schedule of Required Management Methods for Fill Materials**

Cell	Depth Below Existing Grade (feet)	Required Management Method for Fill Materials
		<b>NOTE: If material that is acceptable for regrading within the "Limits of Impacted Fill Requiring Management" is removed from these limits, this fill material must be disposed at a biopile in accordance with the specifications.</b>
P	0-2	May be regraded within the "Limits of Impacted Fill Requiring Management"
	2-4	May be regraded within the "Limits of Impacted Fill Requiring Management"
	4-6	May be regraded within the "Limits of Impacted Fill Requiring Management"
	6-8	May be regraded within the "Limits of Impacted Fill Requiring Management"
	8-10*	May be regraded within the "Limits of Impacted Fill Requiring Management"
PP	0-2	May be regraded within the "Limits of Impacted Fill Requiring Management"
	2-4	May be regraded within the "Limits of Impacted Fill Requiring Management"
	4-6	May be regraded within the "Limits of Impacted Fill Requiring Management"
	6-8	May be regraded within the "Limits of Impacted Fill Requiring Management"
	8-10*	May be regraded within the "Limits of Impacted Fill Requiring Management"
Q	0-2	May be regraded within the "Limits of Impacted Fill Requiring Management"
	2-4	May be regraded within the "Limits of Impacted Fill Requiring Management"
	4-6	May be regraded within the "Limits of Impacted Fill Requiring Management"
	6-8	May be regraded within the "Limits of Impacted Fill Requiring Management"
	8-10*	May be regraded within the "Limits of Impacted Fill Requiring Management"
QQ	0-2	May be regraded within the "Limits of Impacted Fill Requiring Management"
	2-4	May be regraded within the "Limits of Impacted Fill Requiring Management"
	4-6	<b>Disposal at a biopile</b>
	6-8	<b>Disposal at a biopile</b>
	8-10*	<b>Disposal at a biopile</b>
R	0-2	May be regraded within the "Limits of Impacted Fill Requiring Management"
	2-4	May be regraded within the "Limits of Impacted Fill Requiring Management"
	4-6	May be regraded within the "Limits of Impacted Fill Requiring Management"
	6-8	May be regraded within the "Limits of Impacted Fill Requiring Management"
	8-10*	May be regraded within the "Limits of Impacted Fill Requiring Management"
RR	0-2	May be regraded within the "Limits of Impacted Fill Requiring Management"
	2-4	May be regraded within the "Limits of Impacted Fill Requiring Management"
	4-6	May be regraded within the "Limits of Impacted Fill Requiring Management"
	6-8	May be regraded within the "Limits of Impacted Fill Requiring Management"
	8-10*	May be regraded within the "Limits of Impacted Fill Requiring Management"

**Table 1 (continued)**  
**Autowrecker's**  
**Schedule of Required Management Methods for Fill Materials**

Cell	Depth Below Existing Grade (feet)	Required Management Method for Fill Materials
		<b>NOTE: If material that is acceptable for regrading within the "Limits of Impacted Fill Requiring Management" is removed from these limits, this fill material must be disposed at a biopile in accordance with the specifications.</b>
S	0-2	May be regraded within the "Limits of Impacted Fill Requiring Management"
	2-4	May be regraded within the "Limits of Impacted Fill Requiring Management"
	4-6	May be regraded within the "Limits of Impacted Fill Requiring Management"
	6-8	May be regraded within the "Limits of Impacted Fill Requiring Management"
	8-10*	May be regraded within the "Limits of Impacted Fill Requiring Management"
SS	0-2	May be regraded within the "Limits of Impacted Fill Requiring Management"
	2-4	May be regraded within the "Limits of Impacted Fill Requiring Management"
	4-6	<b>Disposal at a biopile</b>
	6-8	<b>Disposal at a biopile</b>
	8-10*	<b>Disposal at a biopile</b>

NOTE:

\* Actual depth of excavation in these cells was to the depth of groundwater as determined by the ENGINEER in the field. Groundwater is estimated at a depth of approximately 9 to 11 feet below existing grade.

**Table 2**  
**Summary of PCB-Impacted Fill Removal**  
**WisDOT - Autowrecker's Remediation**  
**St. Francis, Wisconsin**

AFFECTED CELL DESIGNATION	PROPOSED SOIL REMOVAL INTERVAL (feet)	ORIGINAL SURFACE ELEVATION	SOIL REMOVAL ELEVATIONS <sup>(1)</sup>	
			SURFACE INTERVAL	BASE ELEVATION
E	(0-2)	675.0	675.0	673.0
M	(2-4)	673.1	671.1	669.1
	(6-10)	673.1	667.1	663.1

**Table 3**  
**Summary of PVOC-Impacted Fill Removal**  
**WisDOT - Autowrecker's Remediation**  
**St. Francis, Wisconsin**

AFFECTED CELL DESIGNATION	REQUIRED SOIL REMOVAL INTERVAL (feet)	ORIGINAL SURFACE ELEVATION	SOIL REMOVAL ELEVATIONS <sup>(1)</sup>	
			SURFACE ELEVATION	BASE ELEVATION
B	(2-4)	675.5	673.5	671.5
	(6-10)	675.5	669.5	665.5
CC	(0-4)	674.0	674.0	670.0
D	(0-6)	675.0	675.0	669.0
DD	(0-4)	673.8	673.8	669.8
E	(2-8)	675.0	673.0	667.0
EE	(2-8)	673.9	671.9	665.9
G	(0-2)	673.7	673.7	671.7
HH	(2-10)	673.5	671.5	663.5
I	(2-6)	674.0	672.0	668.0
II	(2-10)	673.3	671.3	663.3
K	(4-8)	673.3	669.3	665.3
M	(4-6)	673.1	669.1	667.1
MM	(2-10)	672.6	670.6	662.6
N	(4-10)	673.5	669.5	663.5
NN	(2-10)	673.4	671.4	663.4
O	(0-10)	674.0	674.0	664.0
OO	(4-10)	673.2	669.2	663.2
QQ	(4-10)	672.3	668.3	662.3
SS	(4-10)	672.0	668.0	662.0

Note:

(1) Elevations were surveyed at/near the center of each cell. These surveyed elevations, along with visual observations, were used to document that the soil had been excavated to the extent required.



# Appendix A

## WDNR Approval Letter

---



**State of Wisconsin | DEPARTMENT OF NATURAL RESOURCES**

Tommy G. Thompson, Governor  
George E. Meyer, Secretary  
Gloria L. McCutcheon, Regional Director

Southeast Region Annex  
4041 N. Richards Street, Box 12436  
Milwaukee, WI 53212-0436  
TELEPHONE 414-229-0800  
FAX 414-229-0810

June 26, 1997

Mr. Ken Wade  
Wisconsin Department of Transportation  
141 NW Barstow St.  
P.O. Box 798  
Waukesha, WI 53187-0798

RE: WDOT Auto Wrecker's Site Waste Management Plan - Lake Parkway WDOT ID# 1300-04-08, DNR FID# 241469250

Dear Mr. Wade:

I have received a copy of your letter dated June 25, 1997 which outlines a proposed waste handling plan for the St. Francis Auto Wrecker's Site in St. Francis, Wisconsin. The Wisconsin Department of Natural Resources approves of the proposed work plan as submitted in that letter. It is understood that excavation and disposal of PVOC and PCB contaminated soil will be removed according to the table presented and that beneficial reuse of fill materials at the site will be managed according to plans previously submitted in RMT's report (Workplan for the Management of Impacted Fill Material, St. Francis Auto Wrecker's Easement, Lake Parkway Project) dated April 1997.

It is agreed that remediation of remaining saturated contaminated fill and groundwater will be addressed on a site-wide basis at the Auto Wrecker's property and the Department would not require further action by the WDOT at this time.

If you have any questions regarding this correspondence, please contact me at (414) 229-0874.

Sincerely,

A handwritten signature in cursive script that reads 'Nancy D. Ryan'.

Nancy D. Ryan  
Hydrogeologist

cc: SER case file







## Wisconsin Department of Transportation

---

TRANSPORTATION DISTRICT 2  
141 N.W. Barstow Street  
PO Box 798  
Waukesha, WI 53187-0798

June 25, 1997

Nancy Ryan  
WDNR SE Region  
P.O. Box 12436  
Milwaukee, WI 53212

Dear Ms. Ryan:

**SUBJECT: WDOT Auto Wrecker's Site Waste Management Plan - Lake Parkway WDOT  
ID 1300-04-08, DNR FID 241489250**

The District has reviewed your May 29, 1997 response to our workplan (RMT, April 1997) for management of fill materials at the Auto Wrecker's site and provide the following modifications for your review and response:

1. We recognize the construction of highway improvements within the Auto Wrecker's easement area may limit potential remediation options. To insure that contaminated soils under the roadway will not pose a threat to groundwater contamination, the waste handling plan will include removal of those soils with PVOC concentrations significantly greater than the NR 720 RCL.

The cells and depths of the fill materials requiring offsite treatment and disposal are identified on the attached table. If field observations indicate that significant contamination may extend into a cell not requiring offsite removal, that contaminated fill material will also be included for offsite removal. Note that according to the waste handling plan cells with > 50 ppm PCB (Cells E, 0-2 ft; and M, 2-4, 6-10 ft) will be removed for off-site disposal at a TSCA-approved facility.

Note that Cells BB(0-2, 8-10ft), C(2-4 ft), FF(0-2ft), G(2-6), GG(0-2ft), I(2-4, 4-6 ft), K(0-2), and PP(6-8) which may have the potential to slightly exceed the RCL, have not been targeted for offsite removal due to the uncertainty of the actual benzene value(Q qualifier), the isolated occurrence of the cell location, and the low PID values recorded. If repositioned, these materials will be placed to avoid saturation. In addition, the placement of a low permeability cover over the wastes remaining will insure significant leaching of this material will not occur.

2. It is our understanding that the remediation of remaining saturated contaminated fill and groundwater will need to be addressed on a site-wide basis at the Auto Wrecker's property and that any such work will be outside of the scope of the DOT highway waste handling plan. It also our understanding that according to the current understanding of site conditions that additional DOT remedial action is not anticipated at the Auto Wrecker's site.
3. The District believes the issue of the DOT's responsibility as an easement-holder under the requirements of the state spill law, Section 292.11(3), is a statewide concern that would be best addressed through the ongoing DOT/DNR Memorandum of Agreement negotiations.

Due to the Lake Parkway project schedule I ask for your response to our plan revision at the earliest possible time. Please call me at 414-548-8733 if you have any questions.

Sincerely,



Ken Wade, P.E., P.G.

- c. Jeff Bremer - RMT
- Tom Longtin - WDOT-D2, Barstow
- Kevin Gehrmann - Hill Farms, Risk & Safety Mgt.
- Russ Rasmussen/John Lewis - BoE

**Fill Materials Requiring Offsite Treatment and Disposal**

<u>Cell</u>	<u>Depth Interval(feet)</u>
B	2-4, 6 to top of saturated zone.
CC	0-4
D	0-6
DD	0-4
E	0-8
EE	2-8
G	0-2
HH	2 to top of saturated zone
II	2 to top of saturated zone
K	4-8
M	2 to top of saturated zone
MM	2 to top of saturated zone
N	4 to top of saturated zone
NN	2 to top of saturated zone
O	0 to top of saturated zone
OO	4 to top of saturated zone
QQ	4 to top of saturated zone
SS	4 to top of saturated zone



# Appendix B

## Photographic Documentation

---



#1 - Auto Wreckers Property (Start)



#2 - Auto Wreckers Property (complete)



#3 - Site Preparation Work



#4 - Loading Vegetation



#5 - Excavating TSCA Waste



#6- Loading TSCA Waste



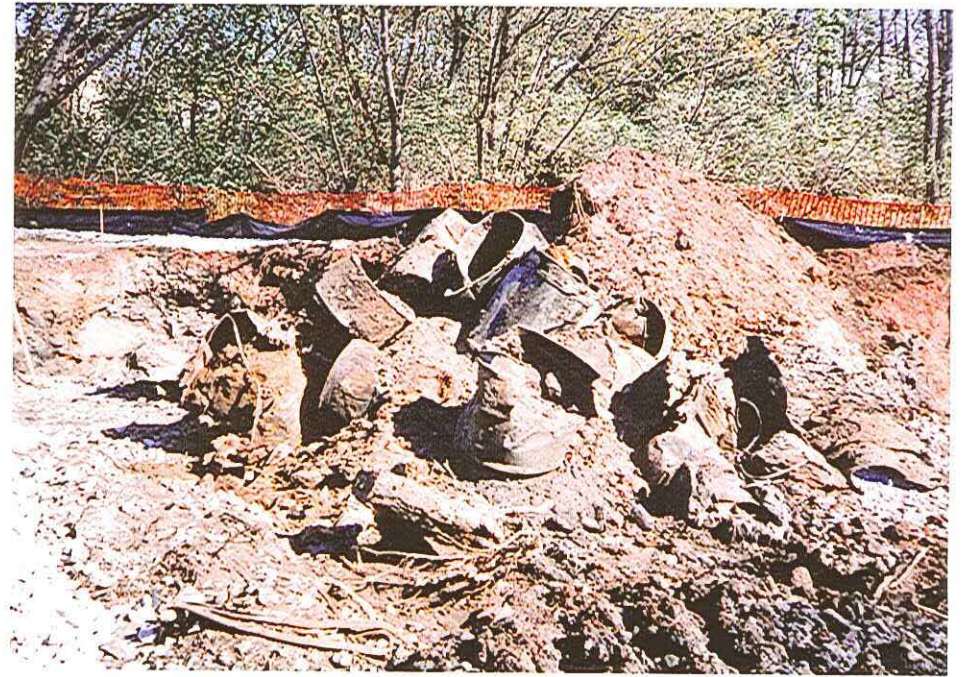
#7 - Biopile Excavation Cells



#8 - Loading Biopile Material



#9 - Discovered drums



#10- Drums and wastes prior to segregation



#11 - Drum segregation and characterization



#12 - Drum segregation and characterization



#13 - Remaining East Sidewall



#14- Material Regrading



#15 - Grading and Compacting



#16 - Covering Sideslopes





#17- Characterized Drums



#18 - Loading Drums for Disposal



#19 - Placing Gravel Barrier



#20 - Barrier Placement Complete



# Appendix C

## Monitoring Well Abandonment Forms

---

All abandonment work shall be performed in accordance with the provisions of Chapters NR 111, NR 112 or NR 141, Wis. Admin. Code, whichever is applicable. Also, see instructions on back.

(1) GENERAL INFORMATION		(2) FACILITY NAME	
Well/Drillhole/Borehole Location	County <b>MILWAUKEE</b>	Original Well Owner (if known) <b>ST. FRANCIS AUTO WRECKERS</b>	
<b>NE 1/4 of NW 1/4 of Sec. 22 : T. 6 N. R. 22</b> <input checked="" type="checkbox"/> E <input type="checkbox"/> W (If applicable)		Present Well Owner <b>WISCONSIN DEPARTMENT OF TRANSPORTATION</b>	
Gov't Lot	Grid Number	Street or Route	
Grid Location ft. <input type="checkbox"/> N. <input type="checkbox"/> S. ft. <input type="checkbox"/> E. <input type="checkbox"/> W.		City, State, Zip Code	
Civil Town Name <b>ST. FRANCIS</b>		Facility Well No. and/or Name (if applicable) <b>UNKNOWN</b>	WI Unique Well No. _____
Street Address of Well		Reason For Abandonment <b>IN CONSTRUCTION AREA</b>	
City, Village <b>ST. FRANCIS</b>		Date of Abandonment <b>(UNKNOWN - BY OTHER) DISCOVERED ABOVE ON 10/6*</b>	

WELL/DRILLHOLE/BOREHOLE INFORMATION

(3) Original Well/Drillhole/Borehole Construction Completed On (Date) <b>UNKNOWN</b>	(4) Depth to Water (Feet) <b>UNK.</b>
<input checked="" type="checkbox"/> Monitoring Well <input type="checkbox"/> Water Well <input type="checkbox"/> Drillhole <input type="checkbox"/> Borehole  Construction Type: <input type="checkbox"/> Drilled <input type="checkbox"/> Driven (Sandpoint) <input type="checkbox"/> Dug <input type="checkbox"/> Other (Specify) _____  Formation Type: <input checked="" type="checkbox"/> Unconsolidated Formation <input type="checkbox"/> Bedrock  Total Well Depth (ft.) _____ Casing Diameter (ins.) _____ (From ground surface)  Casing Depth (ft.) _____  Was Well Annular Space Grouted? <input type="checkbox"/> Yes <input type="checkbox"/> No <input type="checkbox"/> Unknown If Yes, To What Depth? _____ Feet	Pump & Piping Removed? <input type="checkbox"/> Yes <input checked="" type="checkbox"/> No <input type="checkbox"/> Not Applicable Liner(s) Removed? <input type="checkbox"/> Yes <input checked="" type="checkbox"/> No <input type="checkbox"/> Not Applicable Screen Removed? <input type="checkbox"/> Yes <input checked="" type="checkbox"/> No <input type="checkbox"/> Not Applicable Casing Left in Place? <input checked="" type="checkbox"/> Yes <input type="checkbox"/> No If No, Explain _____  Was Casing Cut Off Below Surface? <input checked="" type="checkbox"/> Yes <input type="checkbox"/> No Did Sealing Material Rise to Surface? <input type="checkbox"/> Yes <input checked="" type="checkbox"/> N/A Did Material Settle After 24 Hours? <input type="checkbox"/> Yes <input type="checkbox"/> No If Yes, Was Hole Retopped? <input type="checkbox"/> Yes <input type="checkbox"/> No
	(5) Required Method of Placing Sealing Material
	<input type="checkbox"/> Conductor Pipe-Gravity <input type="checkbox"/> Conductor Pipe-Pumped <input type="checkbox"/> Dump Bailer <input type="checkbox"/> Other (Explain) _____
	(6) Sealing Materials
	<input type="checkbox"/> Neat Cement Grout <input type="checkbox"/> Sand-Cement (Concrete) Grout <input type="checkbox"/> Concrete <input type="checkbox"/> Clay-Sand Slurry <input type="checkbox"/> Bentonite-Sand Slurry <input type="checkbox"/> Chipped Bentonite  For monitoring wells and monitoring well boreholes only: <input type="checkbox"/> Bentonite Pellets <input type="checkbox"/> Granular Bentonite <input type="checkbox"/> Bentonite - Cement Grout

(7) Sealing Material Used	From (Ft.)	To (Ft.)	No. 1 yds. Sacks Sealant or Volume	Mix Ratio or Mud Weight
<b>(UNKNOWN)</b>	Surface			

(8) Comments:

(9) Name of Person or Firm Doing Sealing Work <b>RMT/SUPERIOR - JIM MADDEN</b>	
Signature of Person Doing Work <i>Jim Madden</i>	Date Signed
Street or Route <b>744 HEARLAND</b>	Telephone Number <b>(608) 831-4444</b>
City, State, Zip Code <b>MADISON, WI 53717</b>	

(10) FOR DNR OR COUNTY USE ONLY	
Date Received/Inspected	District/County
Reviewer/Inspector	
Follow-up Necessary	



All a abandonment work shall be performed in accordance with the provisions of Chapters NR 111, NR 112 or NR 141, Wis. Admin. Code, whichever is applicable. Also, see instructions on back.

(1) GENERAL INFORMATION		(2) FACILITY NAME	
Well/Drillhole/Borehole Location	County <b>MILWAUKEE</b>	Original Well Owner (If Known) <b>UNKNOWN</b>	
<b>NE 1/4 of NW 1/4 of Sec. 22; T. 6 N. R. 22</b> <input checked="" type="checkbox"/> E <input type="checkbox"/> W (If applicable)		Present Well Owner <b>WISCONSIN DEPT. OF TRANSPORTATION</b>	
Gov't Lot	Grid Number	Street or Route	
Grid Location	ft. <input type="checkbox"/> N. <input type="checkbox"/> S. ft. <input type="checkbox"/> E. <input type="checkbox"/> W.	City, State, Zip Code	
Civil Town Name <b>ST. FRANCIS</b>	Facility Well No. and/or Name (If Applicable) <b>UNKNOWN</b>		WI Unique Well No.
Street Address of Well	Reason For Abandonment <b>IN CONSTRUCTION AREA</b>		
City, Village <b>ST. FRANCIS</b>	Date of Abandonment <b>10/7/97</b>		

WELL/DRILLHOLE/BOREHOLE INFORMATION	
(3) Original Well/Drillhole/Borehole Construction Completed On (Date) <b>UNKNOWN</b>	(4) Depth to Water (Feet) <b>1'</b>
<input checked="" type="checkbox"/> Monitoring Well <input type="checkbox"/> Water Well <input type="checkbox"/> Drillhole <input type="checkbox"/> Borehole	Pump & Piping Removed? <input type="checkbox"/> Yes <input checked="" type="checkbox"/> No <input type="checkbox"/> Not Applicable Liner(s) Removed? <input type="checkbox"/> Yes <input checked="" type="checkbox"/> No <input type="checkbox"/> Not Applicable Screen Removed? <input type="checkbox"/> Yes <input checked="" type="checkbox"/> No <input type="checkbox"/> Not Applicable Casing Left in Place? <input checked="" type="checkbox"/> Yes <input type="checkbox"/> No If No, Explain _____
Construction Report Available? <input type="checkbox"/> Yes <input type="checkbox"/> No	Was Casing Cut Off Below Surface? <input checked="" type="checkbox"/> Yes <input type="checkbox"/> No Did Sealing Material Rise to Surface? <input checked="" type="checkbox"/> Yes <input type="checkbox"/> No Did Material Settle After 24 Hours? <input type="checkbox"/> Yes <input checked="" type="checkbox"/> No If Yes, Was Hole Relopped? <input type="checkbox"/> Yes <input type="checkbox"/> No
Construction Type: <input type="checkbox"/> Drilled <input type="checkbox"/> Driven (Sandpoint) <input type="checkbox"/> Dug <input type="checkbox"/> Other (Specify) _____	(5) Required Method of Placing Sealing Material
Formation Type: <input checked="" type="checkbox"/> Unconsolidated Formation <input type="checkbox"/> Bedrock	<input checked="" type="checkbox"/> Conductor Pipe-Gravity <input type="checkbox"/> Conductor Pipe-Pumped <input type="checkbox"/> Dump Bailer <input type="checkbox"/> Other (Explain) _____
Total Well Depth (ft.) _____ Casing Diameter (ins.) _____ (From ground surface) Casing Depth (ft.) _____	(6) Sealing Materials For monitoring wells and monitoring well boreholes only
Was Well Annular Space Grouted? <input type="checkbox"/> Yes <input type="checkbox"/> No <input type="checkbox"/> Unknown If Yes, To What Depth? _____ Feet	<input type="checkbox"/> Neat Cement Grout <input type="checkbox"/> Sand-Cement (Concrete) Grout <input type="checkbox"/> Concrete <input type="checkbox"/> Clay-Sand Slurry <input type="checkbox"/> Bentonite-Sand Slurry <input type="checkbox"/> Chipped Bentonite
	<input type="checkbox"/> Bentonite Pellets <input checked="" type="checkbox"/> Granular Bentonite <input type="checkbox"/> Bentonite - Cement Grout

(7) Sealing Material Used	From (Ft.)	To (Ft.)	No. 1 yds. Sacks Sealant or Volume	Mix Ratio or Mud Weight
<b>BENTONITE GRANULES</b>	<b>Surface</b>	<b>5'</b>	<b>4466</b>	

(8) Comments:

(9) Name of Person or Firm Doing Sealing Work <b>RMT/SUPERIOR - JIM MADDEN</b>	
Signature of Person Doing Work <i>[Signature]</i>	Date Signed
Street or Route <b>744 HEALTLAND</b>	Telephone Number <b>(608) 831-4444</b>
City, State, Zip Code <b>MADISON, WI 53717</b>	

(10) FOR DNR OR COUNTY USE ONLY	
Date Received/Inspected	District/County
Reviewer/Inspector	
Follow-up Necessary	

All abandonment work shall be performed in accordance with the provisions of Chapters NR 111, NR 112 or NR 141, Wis. Admin. Code, whichever is applicable. Also, see instructions on back.

<b>(1) GENERAL INFORMATION</b>		<b>(2) FACILITY NAME</b>	
Well/Drillhole/Borehole Location	County <b>MILWAUKEE</b>	Original Well Owner (If Known) <b>WIS-DOT</b>	
NE 1/4 of NW 1/4 of Sec. <b>22</b> ; T. <b>6</b> N. R. <b>22</b> <input checked="" type="checkbox"/> E <input type="checkbox"/> W (If applicable)		Present Well Owner <b>WISCONSIN DEPARTMENT OF TRANSPORTATION</b>	
Gov't Lot	Grid Number	Street or Route	
Grid Location _____ ft. <input type="checkbox"/> N. <input type="checkbox"/> S. _____ ft. <input type="checkbox"/> E. <input type="checkbox"/> W.		City, State, Zip Code	
Civil Town Name <b>ST. FRANCIS</b>		Facility Well No. and/or Name (If Applicable) <b>BW-13A</b>	WI Unique Well No. _____
Street Address of Well		Reason For Abandonment <b>IN CONSTRUCTION AREA</b>	
City, Village <b>ST. FRANCIS</b>		Date of Abandonment <b>10/7/97</b>	

<b>WELL/DRILLHOLE/BOREHOLE INFORMATION</b>			
<b>(3) Original Well/Drillhole/Borehole Construction Completed On</b> (Date) <b>06/26/90</b>		<b>(4) Depth to Water (Feet)</b> <u>12'</u>	
<input checked="" type="checkbox"/> Monitoring Well <input type="checkbox"/> Water Well <input type="checkbox"/> Drillhole <input type="checkbox"/> Borehole		Pump & Piping Removed? <input type="checkbox"/> Yes <input checked="" type="checkbox"/> No <input type="checkbox"/> Not Applicable Liner(s) Removed? <input type="checkbox"/> Yes <input checked="" type="checkbox"/> No <input type="checkbox"/> Not Applicable Screen Removed? <input type="checkbox"/> Yes <input checked="" type="checkbox"/> No <input type="checkbox"/> Not Applicable Casing Left in Place? <input checked="" type="checkbox"/> Yes <input type="checkbox"/> No If No, Explain _____	
Construction Report Available? <input type="checkbox"/> Yes <input type="checkbox"/> No		Was Casing Cut Off Below Surface? <input checked="" type="checkbox"/> Yes <input type="checkbox"/> No Did Sealing Material Rise to Surface? <input checked="" type="checkbox"/> Yes <input type="checkbox"/> No Did Material Settle After 24 Hours? <input type="checkbox"/> Yes <input checked="" type="checkbox"/> No If Yes, Was Hole Retopped? <input type="checkbox"/> Yes <input type="checkbox"/> No	
Construction Type: <input type="checkbox"/> Drilled <input type="checkbox"/> Driven (Sandpoint) <input type="checkbox"/> Dug <input type="checkbox"/> Other (Specify) _____		<b>(5) Required Method of Placing Sealing Material</b>	
Formation Type: <input checked="" type="checkbox"/> Unconsolidated Formation <input type="checkbox"/> Bedrock		<input checked="" type="checkbox"/> Conductor Pipe-Gravity <input type="checkbox"/> Conductor Pipe-Pumped <input type="checkbox"/> Dump Bailer <input type="checkbox"/> Other (Explain) _____	
Total Well Depth (ft.) _____ Casing Diameter (ins.) _____ (From ground surface)  Casing Depth (ft.) _____		<b>(6) Sealing Materials</b>	
Was Well Annular Space Grouted? <input type="checkbox"/> Yes <input type="checkbox"/> No <input type="checkbox"/> Unknown If Yes, To What Depth? _____ Feet		For monitoring wells and monitoring well boreholes only: <input type="checkbox"/> Neat Cement Grout <input type="checkbox"/> Sand-Cement (Concrete) Grout <input type="checkbox"/> Concrete <input type="checkbox"/> Clay-Sand Slurry <input type="checkbox"/> Bentonite-Sand Slurry <input type="checkbox"/> Chipped Bentonite <input type="checkbox"/> Bentonite Pellets <input checked="" type="checkbox"/> Granular Bentonite <input type="checkbox"/> Bentonite - Cement Grout	

(7) Sealing Material Used	From (Ft.)	To (Ft.)	No. 1 gal. Sacks Sealant or Volume	Mix Ratio or Mud Weight
<b>BENTONITE GRANULES</b>	Surface	15'	1/2 BG	

(8) Comments: \_\_\_\_\_

<b>(9) Name of Person or Firm Doing Sealing Work</b> <b>RMT/SUPERIOR - JIM MADON</b>	
Signature of Person Doing Work <i>[Signature]</i>	Date Signed
Street or Route <b>744 HENRIANO</b>	Telephone Number <b>(608) 831-4444</b>
City, State, Zip Code <b>MADISON, WI 53717</b>	

<b>(10) FOR DNR OR COUNTY USE ONLY</b>	
Date Received/Inspected	District/County
Reviewer/Inspector	
Follow-up Necessary	



# Appendix D

## PCB Disposal Manifests

---

## **Autowreckers site**

<b>Manifest #</b>	<b>Weight in lbs.</b>
NYB6662574	45600
NYB6662556	46600
NYB6662565	44930
NYB6662529	46490
NYB6662538	45140
NYB6662547	49490
NYB6662493	46860
NYB6662484	44600
NYB6662502	47480
NYB8891964	46400
NYB8891973	48910
NYB8891982	46700
NYB8891991	51290
NYB8891865	45350
NYB8891901	47550
NYB8891892	46040
NYB8891874	46490
NYB8891883	43410
	839330 lbs - 419.7 tons





STATE OF NEW YORK  
DEPARTMENT OF ENVIRONMENTAL CONSERVATION  
DIVISION OF HAZARDOUS SUBSTANCES REGULATION

**HAZARDOUS WASTE MANIFEST**

P.O. Box 10320, Albany, New York 12212

Form Approved 10/81 by 350-0039 Expires 9-30-94

ECTW

Please print or type. Do not staple.

**UNIFORM HAZARDOUS  
WASTE MANIFEST**

Generator's US EPA No. **410990039804**

Manifest Document No. **11**

Page 01 Information in the shaded areas is not required by Federal Law.

3. Generator's Name and Mailing Address  
**WISCONSIN DOT  
141 N.W. DARSTON  
WALKESHA WI 53107**

Site address:  
**4043 S. Pennsylvania Ave  
St. Louis MO 63105**

A. State Manifest Document No.  
**NY B 666257 4**

5. Transporter 1 (Company Name)  
**JACK GRAY TRANSPORTATION, INC.**

6. US EPA ID Number  
**IND042534875**

C. State Transporter's ID **1297**  
D. Transporter's Phone (**219**) **938-7020**

7. Transporter 2 (Company Name)

8. US EPA ID Number

E. State Transporter's ID

F. Transporter's Phone

9. Designated Facility Name and Site Address  
**CJM Chemical Services Inc.  
1550 Balmer Rd  
Model City, NY 14107**

10. US EPA ID Number  
**NYD1049836679**

G. State Facility's ID

H. Facility's Phone  
**(716) 754-8231**

11. US DOT Description (including Proper Shipping Name, Hazard Class and ID Number)

12. Containers No. Type  
13. Total Quantity  
14. Unit (Vol/WT)  
Waste No.

a. **99 ENVIRONMENTALLY HAZARDOUS SUBSTANCES, SOLID,  
N.O.S., UN3077, III. (POLYCHLORINATED BIPHENYLS)**

**20727**  
**36** **KE**  
EPA **PCB1**  
STATE **6007**

J. Additional Descriptions for Materials listed Above  
**BH8648**

K. Handling Codes for Wastes Listed Above

Grid for handling codes with checkboxes for a, b, c, d, e, f, g, h, i, j, k, l, m, n, o, p, q, r, s, t, u, v, w, x, y, z.

L. Additional Handling Instructions and Additional Information

a. **PCB Out of Service Date: 09-22-97, Weight: 20727 Lbs**  
**CHEMTREC Emergency Response Number (888)353-2387**  
**Manifest Copies ATTN: Mr. Ken Wade**

16. **GENERATOR'S CERTIFICATION:** I hereby declare that the contents of this consignment are fully and accurately described above by proper shipping name and are classified, packed, marked and labeled, and are in all respects in proper condition for transport by highway according to applicable international and national government regulations and state laws and regulations.

If I am a large quantity generator, I certify that I have program in place to reduce the volume and toxicity of waste generated to the degree I have determined to be economically practicable and that I have selected the practicable method treatment, storage, or disposal currently available to me which minimizes the present and future threat to human health and the environment. OR if I am a small generator, I have made a good faith effort to minimize my waste and select the best waste management method that is available to me and that I can afford.

Printed/Typed Name: **Chris A. Amatore AT&T** Signature: **Chris A. Amatore** Mo. Day Year: **09/23/97**

17. Transporter 1 Acknowledgement or Receipt of Materials:  
Printed/Typed Name: **Mike** Signature: **Mike** Mo. Day Year: **10/19/97**

18. Transporter 2 Acknowledgement or Receipt of Materials:  
Printed/Typed Name: Signature: Mo. Day Year:

19. Discrepancy Indication Space

20. Facility Owner or Operator: Certification of receipt of hazardous materials covered by this manifest except as noted in Item 19.

Printed/Typed Name: Signature: Mo. Day Year:

In case of emergency or spill immediately call the National Response Center at (800) 424-8802 and the N.Y. Dept. of Environmental Conservation at (518) 457-7362.

STATE OF NEW YORK  
 DEPARTMENT OF ENVIRONMENTAL CONSERVATION  
 DIVISION OF HAZARDOUS SUBSTANCES REGULATION  
**HAZARDOUS WASTE MANIFEST**  
 P.O. Box 10200 Albany, New York 12210

DOTM

**UNIFORM HAZARDOUS WASTE MANIFEST**

1. Generator's US EPA No. **W10700036604** Manifest Document No.

2. Page 1 of 1 Information in the shaded areas is not required by Federal Law.

3. Generator's Name and Mailing Address

**WISCONSIN DOT  
 241 NEW BOSTON  
 WAUKEGON WI 53187  
 Generator's Phone: **608 266-0705****

A. State Manifest Document No. **NY B 666255 6**

B. Generator's ID

5. Transporter 1 (Company Name)

**JACK SPAY TRANSPORTATION, INC.**

6. US EPA ID Number

**IHD042534073**

C. State Transporter's ID **1297**

D. Transporter's Phone ( **219 938-7020**

7. Transporter 2 (Company Name)

8. US EPA ID Number

E. State Transporter's ID

F. Transporter's Phone (

9. Designated Facility Name and Site Address

**CUMMINS INC  
 250 Eastman Blvd  
 New York NY 11107**

10. US EPA ID Number

**IHD049836679**

G. State Facility's ID

H. Facility's Phone **716 754-0211**

11. US DOT Description (Including Proper Shipping Name, Hazard Class and ID Number)

**20 ENVIRONMENTALLY HAZARDOUS SUBSTANCES, SOLID,  
 N.O.C., S, UN3077, III, (POLYCHLORINATED BIPHENYLS)**

12. Containers	13. Total Quantity	14. Unit (L/Vol)	Waste No.
No. Type			
0010	1211311		

EPA **DCB1**

STATE **6607**

EPA

STATE

EPA

STATE

EPA

STATE

Additional Descriptions for Materials listed Above

**040646**

K. Handling Codes for Wastes Listed Above

a	<input type="checkbox"/>	c	<input type="checkbox"/>
b	<input type="checkbox"/>	d	<input type="checkbox"/>

Additional Instructions and Additional Information

**A. PCB Out of Service Date: 09-22-97, Weight: 211.31, Type: 1  
 CHEMTREC Emergency Response Number: (888)353-2387  
 Manifest Copies ATTN: Mr. Ken Wade**

13. GENERATOR'S CERTIFICATION: I hereby declare that the contents of this consignment are fully and accurately described above by proper shipping name and are classified, packed, marked and labeled, and are in all respects in proper condition for transport by highway according to applicable international and national Government regulations and state laws and regulations.

If I am a large quantity generator, I certify that I have programmed in place to reduce the volume and toxicity of waste generated to the degree I have determined to be economically practicable and that I have selected the practicable method of treatment, storage, or disposal currently available to me which minimizes the present and future threat to human health and the environment. If I am a small generator, I have made a good faith effort to minimize my waste and select the best waste management method that is available to me and that I can afford.

Printed/Typed Name: **John R Morgan** Signature: *John R Morgan* Mo. Day Year: **09/23/97**

Transporter 1 (Acknowledgement or Receipt of Materials):  
 Printed/Typed Name: **John R MORGAN** Signature: *John R Morgan* Mo. Day Year: **09/23/97**

Transporter 2 (Acknowledgement or Receipt of Materials):  
 Printed/Typed Name: Signature: Mo. Day Year:

19. Discrepancy Indication Space

20. Facility Owner or Operator: Certification of receipt of hazardous materials covered by this manifest except as noted in Item 19.

Printed/Typed Name: Signature: Mo. Day Year:



STATE OF NEW YORK  
DEPARTMENT OF ENVIRONMENTAL CONSERVATION  
DIVISION OF HAZARDOUS SUBSTANCES REGULATION

4  
EPA

HAZARDOUS WASTE MANIFEST

P.O. Box 12220, Albany, New York 12212

UNIFORM HAZARDOUS WASTE MANIFEST

1. Generator's US EPA No. **410988634684**  
Manifest Document No. **666252**

2. Page 1 of 1  
Information in the shaded areas is not required by Federal Law.

3. Generator's Name and Mailing Address

**WILSONS DOT**  
**141 N.W. BARSTON**  
**WAUKESHA WI 53187**  
Generator's Phone ( **608 266-8785** )

Site Address:  
**4043 S. Pennsylvania Ave**  
**St. Francis, WI 53235**

A. State Manifest Document No.  
**NY B 666252 9**

B. Generator's ID

5. Transporter 1 (Company Name)  
**BLACK GRAY TRANSPORTATION, INC.**

6. US EPA ID Number  
**IND 042334875**

C. State Transporter's ID **1897**

D. Transporter's Phone ( **219 938-7020** )

7. Transporter 2 (Company Name)

8. US EPA ID Number

E. State Transporter's ID

F. Transporter's Phone ( )

9. Designated Facility Name and Site Address

**CWM Hazard City**  
**1570 Colmer Rd.**  
**Macedon City NY 14107**

10. US EPA ID Number  
**IND 049334679**

G. State Facility's ID

H. Facility's Phone ( **716 754-0211** )

11. US DOT Description (Including Proper Shipping Name, Hazard Class and ID Number)

**5. SOLID, ENVIRONMENTALLY HAZARDOUS SUBSTANCES, POLYCHLORINATED BIPHENYLS**

12. Containers No. Type  
**0810 1211311**

13. Total Quantity  
**KG 887**

14. Unit (Lb/Vol) Waste No.  
**EPA 6081**  
**STATE 887**

EPA  
STATE

EPA  
STATE

EPA  
STATE

Additional Descriptions for Materials listed Above  
**DHSG48**

K. Handling Codes for Wastes Listed Above

Special Handling Instructions and Additional Information

**a. PCB Out of Service Date: 09-22-97, Weight: 71131 Type: 1**  
**CHENTREC Emergency Response Number: 8881353-2387**  
**Manifest Copies ATTN: Mr. Ken Wade**

16. GENERATOR'S CERTIFICATION: I hereby declare that the contents of this consignment are fully and accurately described above by proper shipping name and are classified, packed, marked and labeled, and are in all respects in proper condition for transport by highway according to applicable international and national government regulations and state laws and regulations.

If I am a large quantity generator, I certify that I have a program in place to reduce the volume and toxicity of waste generated to the degree I have determined to be economically practicable and that I have selected the practicable method of treatment, storage, or disposal currently available to me which minimizes the present and future threat to human health and the environment. OR If I am a small generator, I have made a good faith effort to minimize my waste and select the best waste management method that is available to me and that I can afford.

Printed/Typed Name **Ken Wade** Signature **[Signature]** Mo. Day Year **0912397**

17. Transporter 1 (Acknowledgement or Receipt of Materials)  
Printed/Typed Name **Scott M. Louz** Signature **[Signature]** Mo. Day Year **0912397**

18. Transporter 2 (Acknowledgement or Receipt of Materials)  
Printed/Typed Name \_\_\_\_\_ Signature \_\_\_\_\_ Mo. Day Year \_\_\_\_\_

19. Discrepancy Indication Space

20. Facility Owner or Operator: Certification of receipt of hazardous materials covered by this manifest except as noted in Item 19.  
Printed/Typed Name \_\_\_\_\_ Signature \_\_\_\_\_ Mo. Day Year \_\_\_\_\_

STATE OF NEW YORK  
DEPARTMENT OF ENVIRONMENTAL CONSERVATION  
DIVISION OF HAZARDOUS SUBSTANCES REGULATION

CCTW

HAZARDOUS WASTE MANIFEST

Page 1 of 1 (Please Do Not Staple)

P.O. Box 10220, Albany, New York 12212

Form HWM-87 (1-1-89) Expires 9-30-94

UNIFORM HAZARDOUS  
WASTE MANIFEST

1. Generator's US EPA No. **410900636604661213**  
Manifest Document No.

2. Page 1 of 1 information in the shaded areas is not required by Federal Law.

3. Generator's Name and Mailing Address

**WISCONSIN DOT  
141 N.W. BARSTOW  
NAUKESHA WI 53187**

Site Address:  
**4043 S. Pennsylvania Ave  
St Francis WI 53235**

A. State Manifest Document No. **NY B 868253 8**

B. Generator's ID

5. Transporter 1 (Company Name)  
**JACK GRAY TRANSPORTATION, INC.**

6. US EPA ID Number  
**1400425747**

C. State Transporter's ID **1287**

D. Transporter's Phone (**219 538-7828**)

7. Transporter 2 (Company Name)

8. US EPA ID Number

E. State Transporter's ID

F. Transporter's Phone

9. Designated Facility Name and Site Address

**Chem Metal City  
1500 Palmer Rd  
Metal City, NY 14107**

10. US EPA ID Number

**WV101049836679**

G. State Facility's ID

H. Facility's Phone (**716 754-0211**)

11. US DOT Description (Including Proper Shipping Name, Hazard Class and ID Number)

**NO ENVIRONMENTALLY HAZARDOUS SUBSTANCES, SOLID,  
N.O.S., 3, UN3077, III. (POLYCHLORINATED BIPHENYLS)**

12. Containers	13. Total Quantity	14. Unit	15. Waste No.
No.	Type	(W/Vol)	
1	DRUM	205.18 KG	EPA <b>PCB1</b> STATE <b>5887</b>
			EPA STATE
			EPA STATE
			EPA STATE

Additional Descriptions for Materials listed Above  
**DM8648**

K. Handling Codes for Wastes Listed Above

Special handling instructions and Additional information

**a. PCB Out of Service Date: 09-22-97, Weight 205.18 Type: 1  
CHEMTREC Emergency Response Number (888)353-2387  
Manifest Copies ATTN: Mr. Ken Wade**

16. GENERATOR'S CERTIFICATION: I hereby declare that the contents of this consignment are fully and accurately described above by proper shipping name and are classified, packed, marked and labeled, and are in all respects in proper condition for transport by highway according to applicable international and national Government regulations and state laws and regulations.

If I am a large quantity generator, I certify that I have a program in place to reduce the volume and toxicity of waste generated to the degree I have determined to be economically practicable and that I have selected the practicable method of treatment, storage or disposal currently available to me which minimizes the present and future threat to human health and the environment. OR if I am a small generator, I have made a good faith effort to minimize my waste and select the best waste management method that is available to me and that I can afford.

Printed/Typed Name: **Chris A. Akgulina** Signature: *Chris A. Akgulina* Mo. Day Year: **09 23 97**

17. Transporter 1 (Acknowledgement of Receipt of Materials)  
Printed/Typed Name: **ROBERT HANKE** Signature: *Robert Hanke* Mo. Day Year: **09 23 97**

18. Transporter 2 (Acknowledgement or Receipt of Materials)  
Printed/Typed Name: Signature: Mo. Day Year:

19. Discrepancy Indication Space

20. Facility Owner or Operator: Certification of receipt of hazardous materials covered by this manifest except as noted in Item 19.

Printed/Typed Name: Signature: Mo. Day Year:

In case of emergency or spill, immediately call the National Response Center (toll free) 1-800-424-8802 and the N.Y. Dept. of Environmental Conservation (516) 457-7362.

STATE OF NEW YORK  
DEPARTMENT OF ENVIRONMENTAL CONSERVATION  
DIVISION OF HAZARDOUS SUBSTANCES REGULATION

**HAZARDOUS WASTE MANIFEST**

P.O. Box 10320 Albany, New York 12210

ECTW

**UNIFORM HAZARDOUS WASTE MANIFEST**

Generator's US EPA No.

Manifest Document No. **122495T**

2. Page information in the shaded areas is not required by Federal Law.

3. Generator's Name and Mailing Address  
**WISCONSIN DOT  
41 N.W. BARSTOW  
MILWAUKEE WI 53187**

Site Address:  
**4043 S. Pennsylvania Ave.  
St. Francis NY 53235**

A. State Manifest Document No.  
**NY B 666254 7**

B. Generator's ID

5. Transporter 1 (Company Name)  
**JACK GRAY TRANSPORTATION, INC.**

6. US EPA ID Number  
**IND0425BA07**

C. State Transporter's ID **1297**

D. Transporter's Phone (**219 936-7020**)

Transporter 2 (Company Name)

8. US EPA ID Number

E. State Transporter's ID

F. Transporter's Phone ( )

9. Designated Facility Name and Site Address  
**WJM Metal Co.  
500 Balmer Rd.  
Maced City, NY 11107**

10. US EPA ID Number  
**NYD0498136079**

G. State Facility's ID

H. Facility's Phone (**716 754-0211**)

12. Containers (Including Proper Shipping Name, Hazard Class and ID Number)

No.	Type	13. Total Quantity	14. Unit (Lit/Vol)	15. Waste No.
1				

**NO ENVIRONMENTALLY HAZARDOUS SUBSTANCES, SOLID,  
H.O.S., D, UN3077, III, (POLYCHLORINATED BIPHENYLS)**

**1 001 D 122495T KB 1007**

Additional Descriptions for Materials listed Above  
**BH8648**

K. Handling Codes for Wastes Listed Above

Additional Instructions and Additional Information  
**A. PCB Out of Service Date: 09-22-97, Weight: 7745 lbs Type: 1  
CHEMTREC Emergency Response Number (888) 353-2387  
Manifest Copies ATTN: Mr. Ken Wade**

11. GENERATOR'S CERTIFICATION: I hereby declare that the contents of this consignment are fully and accurately described above by proper shipping name and are classified, packed, marked and labeled, and are in all respects in proper condition for transport by highway according to applicable international and national government regulations and state laws and regulations.  
I am a large quantity generator, I certify that I have a program in place to reduce the volume and toxicity of waste generated to the degree I have determined to be economically practicable and that I have selected the practicable method treatment, storage, or disposal currently available to me which minimizes the present and future threat to human health and the environment. OR if I am a small generator, I have made a good faith effort to minimize my waste and select the best waste management method that is available to me and that I can afford.

Printed/Typed Name: **Chris A. Hegler** Signature: *Chris A. Hegler* Mo. Day Year: **09/23/97**

12. Transporter 1 (Acknowledgement or Receipt of Materials)  
Printed/Typed Name: **GARY K VICK** Signature: *Gary K Vick* Mo. Day Year: **09/23/97**

13. Transporter 2 (Acknowledgement or Receipt of Materials)  
Printed/Typed Name: Signature: Mo. Day Year:

19. Discrepancy Indication Space

20. Facility Owner or Operator: Certification of receipt of hazardous materials covered by this manifest except as noted in Item 19.

Printed/Typed Name: Signature: Mo. Day Year:

In case of emergency or spill immediately call the toll-free number 1-800-424-8802 and the New York Dept. of Environmental Conservation at (518) 455-1441.

STATE OF NEW YORK  
 DEPARTMENT OF ENVIRONMENTAL CONSERVATION  
 DIVISION OF HAZARDOUS SUBSTANCES REGULATION  
**HAZARDOUS WASTE MANIFEST**  
 P.O. Box 48220 Albany, New York 12240

7  
 80714

Use this form only for hazardous waste.

Information in the shaded areas is not required by Federal Law.

**UNIFORM HAZARDOUS WASTE MANIFEST**

1. Generator's US EPA No. **140076863600**  
 Manifest Document No. **6102491**

2. Page 1 of 1 information in the shaded areas is not required by Federal Law.

3. Generator's Name and Mailing Address  
**WISCONSIN DOT**  
**141 N.W. BARSTOW**  
**WAUKESHA WI 53187**

Site Address  
**40 E. ...**  
**WAUKESHA WI 53187**

A. State Manifest Document No.  
**NY B 666249 3**

4. Generator's Phone ( **608 266-0705** )

5. Transporter 1 (Company Name)  
**JACK GRAY TRANSPORTATION, INC.**

6. US EPA ID Number  
**140004253487**

C. State Transporter's ID **1297**  
 D. Transporter's Phone ( **219 938-7020** )

7. Transporter 2 (Company Name)

8. US EPA ID Number

E. State Transporter's ID  
 F. Transporter's Phone ( )

9. Designated Facility Name and Site Address  
**WJM ...**  
**100 ...**  
**NY 11107**

10. US EPA ID Number  
**1401049836079**

G. State Facility's ID  
 H. Facility's Phone **716 754-0211**

11. US DOT Description (Including Proper Shipping Name, Hazard Class and ID Number)

12. Containers No. Type  
 13. Total Quantity  
 14. Unit (Lb./Gall.) Waste No.

**PQ ENVIRONMENTALLY HAZARDOUS SUBSTANCES, SOLID,  
 N. O. S., 3, UN3077, III, (POLYCHLORINATED BIPHENYLS)**

**210001** **KG** **STATE**

Additional Descriptions for Materials listed Above  
**840640**

K. Handling Codes for Wastes Listed Above

Special handling instructions and additional information  
**a. PCB Out of Service Dates 09-22-97, Weight: 21300 Type: 1**  
**CHEMTREC Emergency Response Number (888)353-2367**  
**Manifest Copies ATTN: Mr. Ken Wade**

16. **GENERATOR'S CERTIFICATION:** I hereby declare that the contents of this consignment are truly and accurately described above by proper shipping name and are classified, packed, marked and labeled, and are in all respects in proper condition for transport by highway according to applicable international and national government regulations and state laws and regulations.

I am a large quantity generator, I certify that I have a program in place to reduce the volume and toxicity of waste generated to the degree I have determined to be economically practicable and that I have selected the practicable method of treatment, storage, or disposal currently available to me which minimizes the present and future threat to human health and the environment. If I am a small generator, I have made a good faith effort to minimize my waste and selected the best waste management method that is available to me and that I can afford.

Printed/Typed Name **Chris A. ...** Signature **Chris A. ...** Mo. Day Year **092397**

17. Transporter 1 (Acknowledgement of Receipt of Materials)  
 Printed/Typed Name **Wayne ...** Signature **Wayne ...** Mo. Day Year **092397**

18. Transporter 2 (Acknowledgement of Receipt of Materials)  
 Printed/Typed Name Signature Mo. Day Year

19. Discrepancy Indication Space

20. Facility Owner or Operator: Certification or receipt of hazardous materials covered by this manifest except as noted in Item 19.

Printed/Typed Name Signature Mo. Day Year

STATE OF NEW YORK  
DEPARTMENT OF ENVIRONMENTAL CONSERVATION  
DIVISION OF HAZARDOUS SUBSTANCES REGULATION

**HAZARDOUS WASTE MANIFEST**

P.O. Box 12320 Albany, New York 12212

CTW

Form Approved 10/13/11 4110-1020 Expires 9-30-14

**UNIFORM HAZARDOUS WASTE MANIFEST**

1. Generator's US EPA No. **140098883888460248**

Manifest Document No. **666248**

2. Page 1 of 1 information in the shaded areas is not required by Federal Law.

3. Generator's Name and Mailing Address  
**WISCONSIN DOT  
141 N. W. BARSTON  
WAUKEESHA WI 53187**

4. Generator's Phone ( **608 266-8705** )

Site Address:  
**1013 S. Franklin Ave  
St. Francis WI 53185**

A. State Manifest Document No.  
**NY B 666248 4**

~~WISCONSIN DEPARTMENT OF TRANSPORTATION  
EMERGENCY RESPONSE UNIT 53078-4637~~

5. Transporter 1 (Company Name) **JACK GRAY TRANSPORTATION, INC.**

6. US EPA ID Number **IND042534875**

C. State Transporter's ID - **1297**

D. Transporter's Phone ( **219 938-7828** )

7. Transporter 2 (Company Name)

8. US EPA ID Number

E. State Transporter's ID

F. Transporter's Phone ( )

9. Designated Facility Name and Site Address  
**WJM Metal City  
1000 Palmer Rd  
Metal City, NY 14107**

10. US EPA ID Number **NYD049836079**

G. State Facility's ID

H. Facility's Phone **716 754-0211**

11. US DOT Description (Including Proper Shipping Name, Hazard Class and ID Number)	12. Containers		13. Total Quantity	14. Unit (W/Vol)	15. Waste No.
	No.	Type			
a. <b>NO ENVIRONMENTALLY HAZARDOUS SUBSTANCES, SOLID. H. Q. D., B, UN3077, III. (POLYCHLORINATED BIPHENYLS)</b>	<b>0010</b>	<b>#20272</b>	<b>KG</b>		<b>EPA PCB1 STATE</b>
b.					<b>EPA STATE</b>
c.					<b>EPA STATE</b>
d.					<b>EPA STATE</b>

Additional Descriptions for Materials listed Above  
**BH8648**

K. Handling Codes for Wastes Listed Above

1  a  c

2  d  j

Additional Instructions and Additional Information  
a. **PCB Out of Service Date: 09-22-97, Weight: 20272, Type: 1  
CHEMTREC Emergency Response Number (888)353-2387  
Manifest Copies ATTN: Mr. Ken Wade**

10. GENERATOR'S CERTIFICATION: I hereby declare that the contents of this consignment are fully and accurately described above by proper shipping name and are classified, packed, marked and labeled, and are in all respects in proper condition for transport by highway according to applicable international and national government regulations and state laws and regulations.

I am a large quantity generator. I certify that I have program in place to reduce the volume and toxicity of waste generated to the degree I have determined to be economically practicable and that I have selected the practicable method treatment, storage, or disposal currently available to me which minimizes the present and future threat to human health and the environment. OR I am a small generator. I have made a good faith effort to minimize my waste and select the best waste management method that is available to me and that I can afford.

Printed/Typed Name **Chris A. Haskins** Signature **Chris A. Haskins** Mo. Day Year **09/23/97**

Printed/Typed Name **John Barbour** Signature **John Barbour** Mo. Day Year **10/23/97**

Printed/Typed Name \_\_\_\_\_ Signature \_\_\_\_\_ Mo. Day Year \_\_\_\_\_

19. Discrepancy Indication Space

20. Facility Owner or Operator: Certification of receipt of hazardous materials covered by this manifest except as noted in item 19.

Printed/Typed Name \_\_\_\_\_ Signature \_\_\_\_\_ Mo. Day Year \_\_\_\_\_



STATE OF NEW YORK  
 DEPARTMENT OF ENVIRONMENTAL CONSERVATION  
 DIVISION OF HAZARDOUS SUBSTANCES REGULATION  
**HAZARDOUS WASTE MANIFEST**  
 P.O. Box 10220, Albany, New York 12242

9  
 12TH

**UNIFORM HAZARDOUS WASTE MANIFEST**

Generator's US EPA No. **141038663868** Manifest Document No. **466-70**

Page 1 of 1 Information in the shaded areas is not required by Federal Law.

3. Generator's Name and Mailing Address  
**WTECONSIN DOT**  
**121 N.W. BARGTON**  
**WAKESHA WI 53187**  
 4. Generator's Phone ( **509 266-0703** )

A. State Manifest Document No.  
**NY B 666250 2**

B. Generator's ID

5. Transporter 1 (Company Name) **JACK GRAY TRANSPORTATION, INC.** 6. US EPA ID Number **1410046534879**

C. State Transporter's ID **1297**

D. Transporter's Phone ( **219 938-7828** )

7. Transporter 2 (Company Name) 8. US EPA ID Number

E. State Transporter's ID

F. Transporter's Phone ( )

9. Designated Facility Name and Site Address  
**OWM Hazard Corp**  
**150 Palmer Exp**  
**Ward City NY 14107** 10. US EPA ID Number **141004981346679**

G. State Facility's ID

H. Facility's Phone **716 754-0211**

11. US DOT Description (including Proper Shipping Name, Hazard Class and ID Number)

12. Containers No. Type

13. Total Quantity

14. Unit (L/Vol)

15. Waste No.

a. **NO ENVIRONMENTALLY HAZARDOUS SUBSTANCES. SOLID, UNCLASIFIED, UN007, III, (POLYCHLORINATED BIPHENYLS)**

**00107** **21381** **KG**

EPA **PCB1**

STATE

EPA

STATE

EPA

STATE

EPA

STATE

16. Additional Descriptions for Materials listed Above  
**BH8640**

17. Handling Codes for Wastes Listed Above

18. Special Handling Instructions and Additional Information  
**PCB Out of Service Date: 09-22-97, Weight: 21381, Type: 1**  
**CHEMTREC Emergency Response Number (888)353-2387**  
**Manifest Copies ATTN: Mr. Ken Wade**

19. GENERATOR'S CERTIFICATION: I hereby declare that the contents of this consignment are fully and accurately described above by proper shipping name and are classified, packed, marked and labeled, and are in all respects in proper condition for transport by highway according to applicable international and national Government regulations and state laws and regulations.  
 I am a large quantity generator. I certify that I have program in place to reduce the volume and toxicity of waste generated to the degree I have determined to be economically practicable and that I have selected the practicable method treatment, storage, or disposal currently available to me which minimizes the present and future threat to human health and the environment; OR if I am a small generator, I have made a good faith effort to minimize my waste and to select the best waste management method that is available to me and that I can afford.

Printed/Typed Name **Chris A. Aguila** Signature **Chris A. Aguila** Mo. Day Year **09/23/97**

14. Transporter 1 Acknowledgement of Receipt of Materials:  
 Printed/Typed Name **MERLE E. HAINES JR** Signature **Merle E. Haines Jr** Mo. Day Year **09/23/97**

15. Transporter 2 Acknowledgement of Receipt of Materials:  
 Printed/Typed Name Signature Mo. Day Year

19. Discrepancy Indication Source

20. Facility Owner or Operator: Certification of receipt of hazardous materials covered by this manifest except as noted in item 19.  
 Printed/Typed Name Signature Mo. Day Year

In case of emergency, call Spill Response Unit at 1-800-457-6049 and the nearest spill response team at 424-8602 and the nearest spill response team at 424-8602 and the nearest spill response team at 424-8602

IYB8891964

STATE OF NEW YORK  
DEPARTMENT OF ENVIRONMENTAL CONSERVATION  
DIVISION OF SOLID & HAZARDOUS MATERIALS



10

**HAZARDOUS WASTE MANIFEST**  
P.O. Box 12820, Albany, New York 12212

CCTM

Please type or print. Do not staple.

(Hazardous Waste Manifest 497)

<b>UNIFORM HAZARDOUS WASTE MANIFEST</b>		1. Generator's US EPA No. W 1 0 9 8 8 8 3 0 0 0 0 9 1 1 9 6 4	Manifest Doc. No. 9 1 1 9 6 4	2. Page 1 of 1	Information within heavy bold line is not required by Federal Law.	
3. Generator's Name and Mailing Address <b>WISCONSIN DEPT TRANSPORTATION 141 N.W. BARSTOW WALKESHA WI 53187</b>			Site Address: <b>4043 S. Pennsylvania Ave. St. Francis WI 53235</b>		A. <b>NYB8891964</b>	
4. Generator's Telephone No. <b>800 266-0705</b>			6. US EPA ID Number I N D 0 4 2 5 3 4 A 7 5		B. Generator's ID <b>SAME</b>	
5. Transporter 1 (Company Name) <b>JACK GRAY TRANSPORTATION, INC.</b>			8. US EPA ID Number 		C. State Transporter's ID <b>4097</b>	
7. Transporter 2 (Company Name)			10. US EPA ID Number N Y D 0 4 9 6 3 8 6 7 9		D. Transporter's Telephone <b>219 938-7020</b>	
9. Designated Facility Name and Site Address <b>CWM CHEMICAL SERVICES, INC. 1550 GALVER RD. MODEL CITY NY 14107</b>			10. US EPA ID Number N Y D 0 4 9 6 3 8 6 7 9		E. State Transporter's ID	
					F. Transporter's Telephone ( )	
					G. State Facility ID	
					H. Facility Telephone ( ) <b>716 754-8231</b>	
11. US DOT Description (Including Proper Shipping Name, Hazard Class and ID Number)		12. Containers Number	Type	13. Total Quantity	14. Unit W/Vol	I. Waste No.
a. <b>NO ENVIRONMENTALLY HAZARDOUS SUBSTANCES. SOLID, N.O.S., 9, UN3077, III, (POLYCHLORINATED BIPHENYLS)</b>		1	D	211090	K	EPA DCB1 STATE 8887 EPA STATE
b.						EPA STATE
c.						EPA STATE
d.						EPA STATE
J. Additional Descriptions for Materials listed Above				K. Handling Codes for Wastes Listed Above		
a. <b>8H0640</b>				a. <input type="checkbox"/> c. <input type="checkbox"/>		
b.				b. <input type="checkbox"/> d. <input type="checkbox"/>		
15. Special Handling Instructions and Additional Information a. <b>PCB Out of Service Date: 09-24-97, Weight 21090K Type: I CHEMTREC Emergency Response Number (888)353-2387 Manifest Copies Attn: Mr. Ken Wade Certificate of Disposal Requested</b>						
16. <b>GENERATOR'S CERTIFICATION:</b> I hereby declare that the contents of this consignment are fully and accurately described above by proper shipping name and are classified, packed, marked and labeled, and are in all respects in proper condition for transport by highway according to applicable international and national government regulations and state laws and regulations. If I am a large quantity generator, I certify that I have a program in place to reduce the volume and toxicity of waste generated to the degree I have determined to be economically practicable and that I have selected the practicable method of treatment, storage, or disposal currently available to me which minimizes the present and future threat to human health and the environment; OR if I am a small generator, I have made a good faith effort to minimize my waste and select the best waste management method that is available to me and that I can afford.						
Printed/Typed Name <b>Eric A. Manton</b>		Signature <i>Eric A. Manton</i>		Mo. Day Year <b>09/24/97</b>		
17. Transporter 1 Acknowledgement of Receipt of Materials						
Printed/Typed Name <b>MICHAEL J. VICK</b>		Signature <i>Michael J. Vick</i>		Mo. Day Year <b>09/24/97</b>		
18. Transporter 2 Acknowledgement of Receipt of Materials						
Printed/Typed Name		Signature		Mo. Day Year		
19. Discrepancy Indication Space						
20. Facility Owner or Operator: Certification of receipt of hazardous materials covered by this manifest except as noted in Item 19.						
Printed/Typed Name		Signature		Mo. Day Year		

COPY 3-Disposer State-mailed by generator

al Cor...tion (5...457-7362  
Enviro  
the N...harmf...  
24-88f  
inter  
Respr  
he Na  
date  
or spt  
emer  
In c





NYB8891991

STATE OF NEW YORK  
DEPARTMENT OF ENVIRONMENTAL CONSERVATION  
DIVISION OF SOLID & HAZARDOUS MATERIALS



13

CCTW

**HAZARDOUS WASTE MANIFEST**  
P.O. Box 12820, Albany, New York 12212

Please type or print. Do not staple.

Hazardous Waste Manifest 4/97

<b>UNIFORM HAZARDOUS WASTE MANIFEST</b>		1. Generator's US EPA No. NY0908003000	Manifest Doc. No. 91991	2. Page 1 of 1	Information within heavy bold line is not required by Federal Law.	
3. Generator's Name and Mailing Address <b>WISCONSIN DEPT TRANSPORTATION 141 N.W. BARSTOW WAUKESHA WI 53187</b>		Site Address: <b>4045 S. Pennsylvania Ave St. Francis WJ. 53235</b>		A. Generator's ID <b>NYB8891991</b>		
4. Generator's Telephone No. <b>608 266-0705</b>		6. US EPA ID Number NY0908003000		B. Generator's ID <b>SOME</b>		
5. Transporter 1 (Company Name) <b>JACK GRAY TRANSPORTATION, INC.</b>		6. US EPA ID Number NY0908003000		C. State Transporter's ID <b>1297</b>		
7. Transporter 2 (Company Name)		8. US EPA ID Number		D. Transporter's Telephone <b>219 938-7020</b>		
9. Designated Facility Name and Site Address <b>CWM CHEMICAL SERVICES, INC. 1550 BALMER RD. MODEL CITY NY 14107</b>		10. US EPA ID Number NY0908003000		E. State Transporter's ID		
				F. Transporter's Telephone ( )		
				G. State Facility ID		
				H. Facility Telephone ( ) <b>716 754-8231</b>		
11. US DOT Description (Including Proper Shipping Name, Hazard Class and ID Number)		12. Containers Number	13. Total Quantity	14. Unit Wt/Vol	15. Waste No.	
a. <b>RD ENVIRONMENTALLY HAZARDOUS SUBSTANCES, SOLID. N. O. S., 9. UN3077, III. (POLYCHLORINATED BIPHENYLS)</b>		1	23313	kg	EPA <b>PCB1</b> STATE <b>8007</b> EPA STATE	
b.					STATE	
c.					EPA STATE	
d.					EPA STATE	
J. Additional Descriptions for Materials listed Above		K. Handling Codes for Wastes Listed Above				
a. <b>BH8648</b>		c		a <input type="checkbox"/> c <input type="checkbox"/>		
b		d		b <input type="checkbox"/> d <input type="checkbox"/>		
15. Special Handling Instructions and Additional Information a. <b>PCB Out of Service Dates 09-24-97, Weight: 23313 Types: 1 CHEMTREC Emergency Response Number (888)353-2387 Manifest Copies Attn: Mr. Ken Wade Certificate of Disposal Requested</b>						
16. <b>GENERATOR'S CERTIFICATION:</b> I hereby declare that the contents of this consignment are fully and accurately described above by proper shipping name and are classified, packed, marked and labeled, and are in all respects in proper condition for transport by highway according to applicable international and national government regulations and state laws and regulations. If I am a large quantity generator, I certify that I have a program in place to reduce the volume and toxicity of waste generated to the degree I have determined to be economically practicable and that I have selected the practicable method of treatment, storage, or disposal currently available to me which minimizes the present and future threat to human health and the environment; OR if I am a small generator, I have made a good faith effort to minimize my waste and select the best waste management method that is available to me and that I can afford.						
Printed/Typed Name <b>John A. Ikegami AETS (R)</b>		Signature <i>John A. Ikegami</i>			Mo. Day Year <b>09/24/97</b>	
17. Transporter 1 Acknowledgement of Receipt of Materials						
Printed/Typed Name <b>JAY FAUZY</b>		Signature <i>Jay Fauzy</i>			Mo. Day Year <b>09/24/97</b>	
18. Transporter 2 Acknowledgement of Receipt of Materials						
Printed/Typed Name		Signature			Mo. Day Year	
19. Discrepancy Indication Space						
20. Facility Owner or Operator: Certification of receipt of hazardous materials covered by this manifest except as noted in Item 19.						
Printed/Typed Name		Signature			Mo. Day Year	

COPY 3-Disposer State-mailed by generator

YB8891883

STATE OF NEW YORK  
DEPARTMENT OF ENVIRONMENTAL CONSERVATION  
DIVISION OF SOLID & HAZARDOUS MATERIALS



CCTN

HAZARDOUS WASTE MANIFEST  
P.O. Box 12820, Albany, New York 12212

(Hazardous Waste Manifest 4/97)

Please type or print. Do not staple.

<b>UNIFORM HAZARDOUS WASTE MANIFEST</b>		1. Generator's US EPA No. W I D 9 A 8 E 3 6 6 8 4 9 1 8 8 3		Manifest Doc. No. 91883		2. Page 1 of 1		Information within heavy bold line is not required by Federal Law.	
3. Generator's Name and Mailing Address WISCONSIN DEPT TRANSPORTATION 4043 S PENNSYLVANIA AVE SAINT FRANCIS WI 53235-4648		4. Generator's Telephone 608-257-6994		Mailing Address 141 N. W. Burstead Waukegan WI 53187		A. NYB8891883		B. Generator's ID	
5. Transporter 1 (Company Name) JACK GRAY TRANSPORTATION, INC.		6. US EPA ID Number I N D 0 4 2 5 3 4 8 7 5		C. State Transporter's ID TU004		D. Transporter's Telephone 419 938-7820		E. State Transporter's ID	
7. Transporter 2 (Company Name)		8. US EPA ID Number		F. Transporter's Telephone ( )		G. State Facility ID		H. Facility Telephone ( )	
9. Designated Facility Name and Site Address CUM CHEMICAL SERVICES, INC. 1550 BALMER RD. MODEL CITY NY 14187		10. US EPA ID Number N Y D 0 4 9 0 3 6 6 7 9		716 754-8231					
11. US DOT Description (Including Proper Shipping Name, Hazard Class and ID Number)		12. Containers Number   Type		13. Total Quantity		14. Unit Wt/Vol		1. Waste No.	
a. <b>NO ENVIRONMENTALLY HAZARDOUS SUBSTANCES, SOLID, N. O. S., (POLYCHLORINATED BIPHENYLS), 9, NA3077, III</b>		0   0   1   D   T   1   9   7   B   1				K		EPA PCB STATE 8807 EPA STATE	
b.								EPA STATE	
c.								EPA STATE	
d.								EPA STATE	
J. Additional Descriptions for Materials listed Above		K. Handling Codes for Wastes Listed Above		a <input type="checkbox"/>		c <input type="checkbox"/>			
a. <del>PCB</del> BHD/48		b <input type="checkbox"/>		d <input type="checkbox"/>					
15. Special Handling instructions and Additional Information		a. PCB Out of Service Date: 09-29-97, Weight: (923) Type: 1		CHEMTREC Emergency Response Number (888)353-2387		SR# 359176-5			
16. GENERATOR'S CERTIFICATION: I hereby declare that the contents of this consignment are fully and accurately described above by proper shipping name and are classified, packed, marked and labeled, and are in all respects in proper condition for transport by highway according to applicable international and national government regulations and state laws and regulations.		Signature Chris Akgulian		Mo. Day Year 10/13/97					
17. Transporter 1 Acknowledgement of Receipt of Materials		Signature [Signature]		Mo. Day Year 1-11-97					
18. Transporter 2 Acknowledgement of Receipt of Materials		Signature		Mo. Day Year					
19. Discrepancy Indication Space									
20. Facility Owner or Operator: Certification of receipt of hazardous materials covered by this manifest except as noted in Item 19.		Signature		Mo. Day Year					

GENERATOR

TRANSPORTER

FACILITY

COPY 3-Disposer State-mailed by generator



NYB8891892

STATE OF NEW YORK  
DEPARTMENT OF ENVIRONMENTAL CONSERVATION  
DIVISION OF SOLID & HAZARDOUS MATERIALS



CCTW

HAZARDOUS WASTE MANIFEST  
P.O. Box 12820, Albany, New York 12212

(Hazardous Waste Manifest 4/97)

Please type or print. Do not staple.

<b>UNIFORM HAZARDOUS WASTE MANIFEST</b>		1. Generator's US EPA No. N Y D 9 8 8 6 3 5 5 8 A	Manifest Doc. No. A111892	2. Page 1 of 1	Information within heavy bold line is not required by Federal Law.	
3. Generator's Name and Mailing Address <b>WISCONSIN DEPT TRANSPORTATION 4843 S PENNSYLVANIA AVE SAINT FRANCIS WI 53233-4648</b>				A. <b>NYB8891892</b>		
4. Generator's Telephone 608-267-8994				B. Generator's ID <del>500</del>		
5. Transporter 1 (Company Name) <b>JACK GRAY TRANSPORTATION, INC.</b>		6. US EPA ID Number D N 0 9 4 2 9 3 4 8 7 9		C. State Transporter's ID D W 004 255		
7. Transporter 2 (Company Name)		8. US EPA ID Number		D. Transporter's Telephone 419 938-7020		
9. Designated Facility Name and Site Address <b>CMN CHEMICAL SERVICES, INC. 1550 BALMER RD. MODEL CITY NY 14107</b>		10. US EPA ID Number N Y D 0 4 9 8 3 5 6 7 9		E. State Transporter's ID		
				F. Transporter's Telephone ( )		
				G. State Facility ID		
				H. Facility Telephone ( ) 716 754-4231		
11. US DOT Description (Including Proper Shipping Name, Hazard Class and ID Number)		12. Containers Number Type	13. Total Quantity	14. Unit WVVol	I. Waste No.	
a. <b>RD ENVIRONMENTALLY HAZARDOUS SUBSTANCES. SOLID, N. O. S., (POLYCHLORINATED BIPHENYLS), 9. NA3077, III</b>		0 1 D T	2092	K	EPA PCB STATE 8807 EPA STATE EPA STATE EPA STATE	
b.						
c.						
d.						
J. Additional Descriptions for Materials listed Above				K. Handling Codes for Wastes Listed Above		
a. <b>F4B64B</b>				a <input type="checkbox"/> c <input type="checkbox"/>		
b.				b <input type="checkbox"/> d <input type="checkbox"/>		
15. Special Handling Instructions and Additional Information a. <b>PCB Out of Service Date: 09-29-97, Weight: 20921 types: 1 CHEMTREC Emergency Response Number (888)353-2367</b>						
<b>22# 395776-3</b>						
16. <b>GENERATOR'S CERTIFICATION:</b> I hereby declare that the contents of this consignment are fully and accurately described above by proper shipping name and are classified, packed, marked and labeled, and are in all respects in proper condition for transport by highway according to applicable international and national government regulations and state laws and regulations. If I am a large quantity generator, I certify that I have a program in place to reduce the volume and toxicity of waste generated to the degree I have determined to be economically practicable and that I have selected the practicable method of treatment, storage or disposal currently available to me which minimizes the present and future threat to human health and the environment; OR if I am a small generator, I have made a good faith effort to minimize my waste and select the best waste management method that is available to me and that I can afford.						
Printed/Typed Name <b>CHRIS AKGULIAN/OBH/WI, DOT/ES I</b>		Signature <i>Chris Akgulian</i>			Mo. Day Year <b>09/30/97</b>	
7. Transporter 1 Acknowledgement of Receipt of Materials		Printed/Typed Name <b>Wayne Holden</b>			Signature <i>Wayne Holden</i>	
8. Transporter 2 Acknowledgement of Receipt of Materials		Printed/Typed Name			Signature	
19. Discrepancy Indication Space						
20. Facility Owner or Operator: Certification of receipt of hazardous materials covered by this manifest except as noted in Item 19.						
Printed/Typed Name		Signature			Mo. Day Year	

COPY 3-Disposer State-mailed by generator

124-61  
partn  
the N  
Resy  
Center  
the I  
1 the I  
Envir  
at C  
ation  
-37-736

GENERATOR

TRANSPORTER

FACILITY





NYB8891865

STATE OF NEW YORK  
DEPARTMENT OF ENVIRONMENTAL CONSERVATION  
DIVISION OF SOLID & HAZARDOUS MATERIALS



CCT

HAZARDOUS WASTE MANIFEST  
P.O. Box 12820, Albany, New York 12212

Please type or print. Do not staple.

(Hazardous Waste Manifest 497)

In case of emergency or spill immediately call the National Response Center (800) 424-8802 and the NYS Department of Environmental Conservation (518) 457-7362

<b>UNIFORM HAZARDOUS WASTE MANIFEST</b>		1. Generator's US EPA No. <b>WI 1098863668</b>		Manifest Doc. No. 2. Page 1 of <b>911865</b>		Information within heavy bold line is not required by Federal Law.	
3. Generator's Name and Address <b>WISCONSIN DEPT TRANSPORTATION 4843 S PENNSYLVANIA AVE SAINT FRANCIS WI 53235-4648</b>		Mailing Address: <b>141 U.W. Barstow Waukesha WI, 53187</b>		A. <b>NYB8891865</b>		B. Generator's ID <b>3000</b>	
4. Generator's Telephone <b>608 267-8734</b>		6. US EPA ID Number <b>IND 042534875</b>		C. State Transporter's ID <b>WI 0004297</b>		D. Transporter's Telephone <b>919 935-7020</b>	
5. Transporter 1 (Company Name) <b>JACK GRAY TRANSPORTATION, INC.</b>		7. Transporter 2 (Company Name)		E. State Transporter's ID		F. Transporter's Telephone ( )	
9. Designated Facility Name and Site Address <b>CWM CHEMICAL SERVICES, INC. 1530 BALMER RD. MODEL CITY NY 14107</b>		10. US EPA ID Number <b>NY D 049836679</b>		G. State Facility ID		H. Facility Telephone ( ) <b>716 754-8231</b>	
11. US DOT Description (Including Proper Shipping Name, Hazard Class and ID Number)		12. Containers Number   Type		13. Total Quantity		14. Unit Wt/Vol	
a. <b>NO ENVIRONMENTALLY HAZARDOUS SUBSTANCES. SOLID, N.O.S., (POLYCHLORINATED BIPHENYLS), 9. NA3077, III</b>		0   0   1   D   T		206   13		K	
b.						EPA PCBA STATE 8807 EPA STATE EPA STATE EPA STATE	
c.							
d.							
J. Additional Descriptions for Materials listed Above		K. Handling Codes for Wastes Listed Above		a <input type="checkbox"/>		c <input type="checkbox"/>	
a <input type="checkbox"/>		b <input type="checkbox"/>		d <input type="checkbox"/>		e <input type="checkbox"/>	
15. Special Handling Instructions and Additional Information a. <b>PCB Out of Service Date: 09-29-97, Weight: 20613 Type: 1 CHEMTRAC Emergency Response Number (888)353-2387</b>						<b>SR# 395776-1</b>	
16. GENERATOR'S CERTIFICATION: I hereby declare that the contents of this consignment are fully and accurately described above by proper shipping name and are classified, packed, marked and labeled, and are in all respects in proper condition for transport by highway according to applicable international and national government regulations and state laws and regulations. If I am a large quantity generator, I certify that I have a program in place to reduce the volume and toxicity of waste generated to the degree I have determined to be economically practicable and that I have selected the practicable method of treatment, storage, or disposal currently available to me which minimizes the present and future threat to human health and the environment; OR if I am a small generator, I have made a good faith effort to minimize my waste and select the best waste management method that is available to me and that I can afford.		Printed/Typed Name <b>CHRIS AKGULIAN/OBH/WI.DOT/ES I</b>		Signature <i>Chris Akgulian</i>		Mo. Day Year <b>10/9/97</b>	
17. Transporter 1 Acknowledgement of Receipt of Materials		Printed/Typed Name <b>John R MORGAN</b>		Signature <i>John R Morgan</i>		Mo. Day Year <b>10/9/97</b>	
18. Transporter 2 Acknowledgement of Receipt of Materials		Printed/Typed Name		Signature		Mo. Day Year	
19. Discrepancy Indication Space							
20. Facility Owner or Operator: Certification of receipt of hazardous materials covered by this manifest except as noted in Item 19.		Printed/Typed Name		Signature		Mo. Day Year	

COPY 3-Disposer State-mailed by generator



# Appendix E

## PVOC Disposal Summary

---

**DETAILED TICKET LISTING**

Emerald Park Landfill

FOR THE DATE RANGE 10/01/97 — 10/01/97

MATERIAL&lt;ALL MATERIALS&gt; CUSTOMER&lt;AUTO WRECKERS WDOT C/O

CUSTOMER	TICKET #	CUSTOMER	TRUCK NUM	MATERIAL	NT TONS	YDS
F100371	000149157	AUTO WRECKERS WDOT 28		III-03	15.02	
F100371	000149159	AUTO WRECKERS WDOT 32		III-03	16.70	
F100371	000149165	AUTO WRECKERS WDOT 26		III-03	15.24	
F100371	000149167	AUTO WRECKERS WDOT JD1		III-03	13.11	
F100371	000149176	AUTO WRECKERS WDOT PMF14		III-03	14.76	
F100371	000149184	AUTO WRECKERS WDOT T6		III-03	20.60	
F100371	000149206	AUTO WRECKERS WDOT 28		III-03	18.22	
F100371	000149211	AUTO WRECKERS WDOT JD1		III-03	12.58	
F100371	000149215	AUTO WRECKERS WDOT 32		III-03	19.00	
F100371	000149219	AUTO WRECKERS WDOT 26		III-03	16.11	
F100371	000149222	AUTO WRECKERS WDOT PMF14		III-03	16.08	
F100371	000149225	AUTO WRECKERS WDOT T6		III-03	24.73	
F100371	000149243	AUTO WRECKERS WDOT 28		III-03	16.83	
F100371	000149260	AUTO WRECKERS WDOT JD1		III-03	8.95	
F100371	000149266	AUTO WRECKERS WDOT 32		III-03	18.39	
F100371	000149267	AUTO WRECKERS WDOT 26		III-03	16.88	
F100371	000149268	AUTO WRECKERS WDOT T6		III-03	22.76	
F100371	000149274	AUTO WRECKERS WDOT PMF14		III-03	16.44	
F100371	000149283	AUTO WRECKERS WDOT 28		III-03	17.98	
F100371	000149303	AUTO WRECKERS WDOT JD1		III-03	10.10	
F100371	000149306	AUTO WRECKERS WDOT 32		III-03	18.84	
F100371	000149308	AUTO WRECKERS WDOT 26		III-03	13.29	
F100371	000149311	AUTO WRECKERS WDOT T6		III-03	22.99	
F100371	000149328	AUTO WRECKERS WDOT 28		III-03	17.62	
F100371	000149335	AUTO WRECKERS WDOT PMF14		III-03	12.57	
F100371	000149340	AUTO WRECKERS WDOT JD1		III-03	12.95	
F100371	000149352	AUTO WRECKERS WDOT 32		III-03	15.54	
F100371	000149356	AUTO WRECKERS WDOT T6		III-03	23.47	
F100371	000149358	AUTO WRECKERS WDOT 26		III-03	16.00	
F100371	000149370	AUTO WRECKERS WDOT PMF14		III-03	15.51	
F100371	000149374	AUTO WRECKERS WDOT 28		III-03	19.18	
F100371	000149388	AUTO WRECKERS WDOT JD1		III-03	16.49	
F100371	000149396	AUTO WRECKERS WDOT 32		III-03	20.97	

555.90

Date: 10/02/97

RUNNING TOTAL: 555.90

Time: 11:01:53

# DETAILED TICKET LISTING

Emerald Park Landfill

FOR THE DATE RANGE 10/02/97 — 10/02/97

MATERIAL <ALL MATERIALS> CUSTOMER <AUTO WRECKERS WDOT C/O

CUSTOMER	TICKET #	CUSTOMER	TRUCK NUM	MATERIAL	NT TONS	YDS
F100371	000149449	AUTO WRECKERS	WDOT T6	III-03	22.35	
F100371	000149452	AUTO WRECKERS	WDOT 28	III-03	16.92	
F100371	000149458	AUTO WRECKERS	WDOT 32	III-03	17.46	
F100371	000149461	AUTO WRECKERS	WDOT 26	III-03	14.57	
F100371	000149467	AUTO WRECKERS	WDOT PMF14	III-03	16.56	
F100371	000149471	AUTO WRECKERS	WDOT 9	III-03	17.72	
F100371	000149490	AUTO WRECKERS	WDOT T6	III-03	18.23	
F100371	000149495	AUTO WRECKERS	WDOT 28	III-03	17.04	
F100371	000149506	AUTO WRECKERS	WDOT 32	III-03	16.22	
F100371	000149509	AUTO WRECKERS	WDOT 26	III-03	15.14	
F100371	000149517	AUTO WRECKERS	WDOT PMF14	III-03	15.59	
F100371	000149520	AUTO WRECKERS	WDOT 9	III-03	12.42	
F100371	000149528	AUTO WRECKERS	WDOT T6	III-03	17.62	
F100371	000149543	AUTO WRECKERS	WDOT 28	III-03	14.88	
F100371	000149556	AUTO WRECKERS	WDOT 32	III-03	13.39	
F100371	000149561	AUTO WRECKERS	WDOT 26	III-03	16.30	
F100371	000149564	AUTO WRECKERS	WDOT PMF14	III-03	14.28	
F100371	000149567	AUTO WRECKERS	WDOT 9	III-03	14.47	
F100371	000149575	AUTO WRECKERS	WDOT T6	III-03	14.93	
F100371	000149593	AUTO WRECKERS	WDOT 28	III-03	17.05	
F100371	000149604	AUTO WRECKERS	WDOT 32	III-03	14.01	
F100371	000149606	AUTO WRECKERS	WDOT 26	III-03	13.01	
F100371	000149613	AUTO WRECKERS	WDOT PMF14	III-03	14.28	
F100371	000149619	AUTO WRECKERS	WDOT 9	III-03	12.01	
F100371	000149631	AUTO WRECKERS	WDOT T6	III-03	20.41	
F100371	000149660	AUTO WRECKERS	WDOT 28	III-03	16.63	
F100371	000149666	AUTO WRECKERS	WDOT 32	III-03	15.49	
F100371	000149669	AUTO WRECKERS	WDOT 26	III-03	15.68	
F100371	000149671	AUTO WRECKERS	WDOT PMF14	III-03	14.32	
F100371	000149675	AUTO WRECKERS	WDOT 9	III-03	13.82	
F100371	000149679	AUTO WRECKERS	WDOT T6	III-03	19.62	
F100371	000149702	AUTO WRECKERS	WDOT 28	III-03	19.11	
F100371	000149716	AUTO WRECKERS	WDOT 32	III-03	17.19	
F100371	000149720	AUTO WRECKERS	WDOT 26	III-03	15.24	
F100371	000149725	AUTO WRECKERS	WDOT PMF14	III-03	14.88	
F100371	000149731	AUTO WRECKERS	WDOT 9	III-03	16.28	
F100371	000149736	AUTO WRECKERS	WDOT T6	III-03	20.98	

1152.0

Date: 10/03/97

**RUNNING TOTAL: 596.10**

Time: 06:57:22

# DETAILED TICKET LISTING

Emerald Park Landfill

FOR THE DATE RANGE 10/03/97 — 10/03/97

MATERIAL:<ALL MATERIALS>

CUSTOMER: AUTO WRECKERS WDOT C/O

CUSTOMER	TICKET #	CUSTOMER	TRUCK NUM	MATERIAL	NT TONS	YDS
F100371	000149784	AUTO WRECKERS	WDOT T6	III-03	21.72	
F100371	000149789	AUTO WRECKERS	WDOT 28	III-03	18.74	
F100371	000149795	AUTO WRECKERS	WDOT 32	III-03	18.77	
F100371	000149807	AUTO WRECKERS	WDOT PMF14	III-03	14.01	
F100371	000149809	AUTO WRECKERS	WDOT 14	III-03	19.04	
F100371	000149812	AUTO WRECKERS	WDOT 26	III-03	11.13	
F100371	000149820	AUTO WRECKERS	WDOT REDWH130	III-03	11.37	
F100371	000149823	AUTO WRECKERS	WDOT 8	III-03	11.40	
F100371	000149824	AUTO WRECKERS	WDOT 9	III-03	12.92	
F100371	000149834	AUTO WRECKERS	WDOT T6	III-03	23.05	
F100371	000149841	AUTO WRECKERS	WDOT 28	III-03	17.28	
F100371	000149849	AUTO WRECKERS	WDOT 32	III-03	16.54	
F100371	000149857	AUTO WRECKERS	WDOT 14	III-03	18.39	
F100371	000149858	AUTO WRECKERS	WDOT PMF14	III-03	15.72	
F100371	000149863	AUTO WRECKERS	WDOT 26	III-03	16.86	
F100371	000149870	AUTO WRECKERS	WDOT REDWH130	III-03	17.63	
F100371	000149872	AUTO WRECKERS	WDOT 9	III-03	17.09	
F100371	000149880	AUTO WRECKERS	WDOT T6	III-03	27.62	
F100371	000149890	AUTO WRECKERS	WDOT 8	III-03	15.15	
F100371	000149898	AUTO WRECKERS	WDOT 28	III-03	18.55	
F100371	000149903	AUTO WRECKERS	WDOT 32	III-03	17.31	
F100371	000149913	AUTO WRECKERS	WDOT 14	III-03	18.00	
F100371	000149914	AUTO WRECKERS	WDOT 26	III-03	17.30	
F100371	000149915	AUTO WRECKERS	WDOT PMF14	III-03	16.59	
F100371	000149921	AUTO WRECKERS	WDOT REDWH130	III-03	17.52	
F100371	000149930	AUTO WRECKERS	WDOT 9	III-03	18.30	
F100371	000149935	AUTO WRECKERS	WDOT T6	III-03	27.07	
F100371	000149942	AUTO WRECKERS	WDOT 28	III-03	16.62	
F100371	000149955	AUTO WRECKERS	WDOT 32	III-03	19.66	
F100371	000149960	AUTO WRECKERS	WDOT 8	III-03	17.85	
F100371	000149967	AUTO WRECKERS	WDOT 26	III-03	16.35	
F100371	000149972	AUTO WRECKERS	WDOT 14	III-03	19.04	
F100371	000149973	AUTO WRECKERS	WDOT PMF14	III-03	16.17	
F100371	000149976	AUTO WRECKERS	WDOT REDWH130	III-03	16.03	
F100371	000149981	AUTO WRECKERS	WDOT 9	III-03	16.54	
F100371	000149985	AUTO WRECKERS	WDOT T6	III-03	20.86	
F100371	000149990	AUTO WRECKERS	WDOT 28	III-03	19.30	
F100371	000150003	AUTO WRECKERS	WDOT 32	III-03	18.08	
F100371	000150009	AUTO WRECKERS	WDOT 8	III-03	15.51	
F100371	000150017	AUTO WRECKERS	WDOT 26	III-03	16.72	
F100371	000150020	AUTO WRECKERS	WDOT 14	III-03	15.16	
F100371	000150021	AUTO WRECKERS	WDOT PMF14	III-03	14.64	
F100371	000150022	AUTO WRECKERS	WDOT REDWH130	III-03	12.74	
F100371	000150024	AUTO WRECKERS	WDOT 9	III-03	14.27	
F100371	000150034	AUTO WRECKERS	WDOT T6	III-03	18.63	

Date: 10/04/97

**RUNNING TOTAL:** 779.24

Time: 09:55:36

2028.88

**DETAILED TICKET LISTING**

*Emerald Park Landfill*

FOR THE DATE RANGE 10/03/97 — 10/03/97

MATERIAL<ALL MATERIALS> CUSTOMER<AUTO WRECKERS WDOT C/O

CUSTOMER	TICKET #	CUSTOMER	TRUCK NUM	MATERIAL	NT TONS	YDS
F100371	000150036	AUTO WRECKERS	WDOT 28	III-03	10.67	
F100371	000150063	AUTO WRECKERS	WDOT 8	III-03	10.89	
F100371	000150072	AUTO WRECKERS	WDOT 26	III-03	15.37	
F100371	000150074	AUTO WRECKERS	WDOT 32	III-03	13.95	
F100371	000150080	AUTO WRECKERS	WDOT REDWH130	III-03	14.60	
F100371	000150083	AUTO WRECKERS	WDOT PMF14	III-03	16.96	
F100371	000150084	AUTO WRECKERS	WDOT 14	III-03	15.20	

Date: 10/04/97

**RUNNING TOTAL: 876.88**

Time: 09:55:36

**DETAILED TICKET LISTING**

Emerald Park Landfill

FOR THE DATE RANGE 10/06/97 — 10/06/97

MATERIAL:&lt;ALL MATERIALS&gt;

CUSTOMER:AUTO WRECKERS WDOT C/O

CUSTOMER	TICKET #	CUSTOMER	TRUCK NUM	MATERIAL	NT TONS	YDS
F100371	000150184	AUTO WRECKERS WDOT 14		III-03	18.54	
F100371	000150187	AUTO WRECKERS WDOT T6		III-03	22.44	
F100371	000150191	AUTO WRECKERS WDOT 66		III-03	21.73	
F100371	000150192	AUTO WRECKERS WDOT 28		III-03	20.30	
F100371	000150196	AUTO WRECKERS WDOT JD1		III-03	14.67	
F100371	000150198	AUTO WRECKERS WDOT 32		III-03	20.49	
F100371	000150200	AUTO WRECKERS WDOT PMF14		III-03	17.51	
F100371	000150203	AUTO WRECKERS WDOT 26		III-03	17.80	
F100371	000150207	AUTO WRECKERS WDOT 9		III-03	16.66	
F100371	000150223	AUTO WRECKERS WDOT 14		III-03	20.92	
F100371	000150229	AUTO WRECKERS WDOT 66		III-03	21.46	
F100371	000150231	AUTO WRECKERS WDOT T6		III-03	24.47	
F100371	000150234	AUTO WRECKERS WDOT 28		III-03	18.72	
F100371	000150238	AUTO WRECKERS WDOT JD1		III-03	14.12	
F100371	000150241	AUTO WRECKERS WDOT 32		III-03	18.53	
F100371	000150248	AUTO WRECKERS WDOT PMF14		III-03	15.48	
F100371	000150251	AUTO WRECKERS WDOT 26		III-03	18.96	
F100371	000150255	AUTO WRECKERS WDOT 9		III-03	14.60	
F100371	000150264	AUTO WRECKERS WDOT 14		III-03	19.25	
F100371	000150274	AUTO WRECKERS WDOT T6		III-03	19.26	
F100371	000150283	AUTO WRECKERS WDOT 66		III-03	14.77	
F100371	000150287	AUTO WRECKERS WDOT 28		III-03	13.10	
F100371	000150289	AUTO WRECKERS WDOT JD1		III-03	12.97	
F100371	000150292	AUTO WRECKERS WDOT 32		III-03	15.05	
F100371	000150298	AUTO WRECKERS WDOT PMF14		III-03	13.67	
F100371	000150300	AUTO WRECKERS WDOT 26		III-03	13.85	
F100371	000150305	AUTO WRECKERS WDOT 9		III-03	12.22	
F100371	000150315	AUTO WRECKERS WDOT 14		III-03	14.70	
F100371	000150326	AUTO WRECKERS WDOT T6		III-03	17.65	
F100371	000150328	AUTO WRECKERS WDOT 66		III-03	15.52	
F100371	000150329	AUTO WRECKERS WDOT JD1		III-03	9.42	
F100371	000150337	AUTO WRECKERS WDOT 32		III-03	12.19	
F100371	000150342	AUTO WRECKERS WDOT PMF14		III-03	11.61	
F100371	000150349	AUTO WRECKERS WDOT 26		III-03	12.59	
F100371	000150352	AUTO WRECKERS WDOT 9		III-03	12.59	
F100371	000150355	AUTO WRECKERS WDOT 14		III-03	13.21	
F100371	000150360	AUTO WRECKERS WDOT T6		III-03	19.52	
F100371	000150378	AUTO WRECKERS WDOT JD1		III-03	10.41	
F100371	000150382	AUTO WRECKERS WDOT 66		III-03	13.29	
F100371	000150385	AUTO WRECKERS WDOT 32		III-03	14.64	
F100371	000150392	AUTO WRECKERS WDOT PMF14		III-03	13.45	
F100371	000150397	AUTO WRECKERS WDOT 26		III-03	12.83	
F100371	000150401	AUTO WRECKERS WDOT 9		III-03	10.62	
F100371	000150407	AUTO WRECKERS WDOT 14		III-03	14.64	
F100371	000150414	AUTO WRECKERS WDOT T6		III-03	18.67	

Date: 10/07/97

**RUNNING TOTAL: 719.09**

Time: 09:39:53

2009.0



**DETAILED TICKET LISTING**

Emerald Park Landfill

FOR THE DATE RANGE 10/06/97 — 10/06/97

MATERIAL&lt;ALL MATERIALS&gt; CUSTOMER: AUTO WRECKERS WDOT C/O

CUSTOMER TICKET #	CUSTOMER	TRUCK NUM	MATERIAL	NT TONS	YDS
F100371	000150436	AUTO WRECKERS WDOT 66	III-03	16.89	
F100371	000150443	AUTO WRECKERS WDOT 32	III-03	16.31	
F100371	000150447	AUTO WRECKERS WDOT 26	III-03	13.61	
F100371	000150455	AUTO WRECKERS WDOT 9	III-03	14.22	

Date: 10/07/97

**RUNNING TOTAL: 780.12**

Time: 09:39:53

**DETAILED TICKET LISTING**

Emerald Park Landfill

FOR THE DATE RANGE 10/07/97 — 10/07/97

MATERIAL &lt;ALL MATERIALS&gt; CUSTOMER &lt;AUTO WRECKERS WDOT C/O

CUSTOMER	TICKET #	CUSTOMER	TRUCK NUM	MATERIAL	NT TONS	YDS
F100371	000150509	AUTO WRECKERS WDOT 63		III-03	17.34	
F100371	000150510	AUTO WRECKERS WDOT 66		III-03	14.44	
F100371	000150511	AUTO WRECKERS WDOT 28		III-03	14.31	
F100371	000150518	AUTO WRECKERS WDOT T6		III-03	19.08	
F100371	000150519	AUTO WRECKERS WDOT 14		III-03	11.17	
F100371	000150521	AUTO WRECKERS WDOT PMF14		III-03	11.42	
F100371	000150527	AUTO WRECKERS WDOT JD1		III-03	10.06	
F100371	000150530	AUTO WRECKERS WDOT 26		III-03	11.78	
F100371	000150547	AUTO WRECKERS WDOT 63		III-03	14.94	
F100371	000150549	AUTO WRECKERS WDOT 66		III-03	11.90	
F100371	000150550	AUTO WRECKERS WDOT 28		III-03	11.90	
F100371	000150555	AUTO WRECKERS WDOT T6		III-03	16.64	
F100371	000150560	AUTO WRECKERS WDOT 14		III-03	14.04	
F100371	000150563	AUTO WRECKERS WDOT PMF14		III-03	14.08	
F100371	000150564	AUTO WRECKERS WDOT JD1		III-03	11.05	
F100371	000150567	AUTO WRECKERS WDOT 26		III-03	11.50	
F100371	000150568	AUTO WRECKERS WDOT 00TEAL		III-03	15.53	
F100371	000150569	AUTO WRECKERS WDOT 97		III-03	17.70	
F100371	000150588	AUTO WRECKERS WDOT 63		III-03	15.76	
F100371	000150591	AUTO WRECKERS WDOT T6		III-03	16.91	
F100371	000150598	AUTO WRECKERS WDOT 66		III-03	13.96	
F100371	000150599	AUTO WRECKERS WDOT 28		III-03	13.39	
F100371	000150606	AUTO WRECKERS WDOT 14		III-03	14.32	
F100371	000150608	AUTO WRECKERS WDOT PMF14		III-03	13.80	
F100371	000150612	AUTO WRECKERS WDOT JD1		III-03	11.66	
F100371	000150616	AUTO WRECKERS WDOT 26		III-03	13.07	
F100371	000150619	AUTO WRECKERS WDOT 00TEAL		III-03	19.15	
F100371	000150623	AUTO WRECKERS WDOT 97		III-03	21.03	
F100371	000150631	AUTO WRECKERS WDOT 63		III-03	18.26	
F100371	000150635	AUTO WRECKERS WDOT T6		III-03	19.67	
F100371	000150645	AUTO WRECKERS WDOT 66		III-03	16.63	
F100371	000150646	AUTO WRECKERS WDOT 28		III-03	14.89	
F100371	000150653	AUTO WRECKERS WDOT 14		III-03	16.64	
F100371	000150655	AUTO WRECKERS WDOT PMF14		III-03	14.70	
F100371	000150657	AUTO WRECKERS WDOT JD1		III-03	11.34	
F100371	000150661	AUTO WRECKERS WDOT 00TEAL		III-03	22.77	
F100371	000150663	AUTO WRECKERS WDOT 26		III-03	11.33	
F100371	000150664	AUTO WRECKERS WDOT 97		III-03	23.66	
F100371	000150672	AUTO WRECKERS WDOT T6		III-03	20.37	
F100371	000150675	AUTO WRECKERS WDOT 63		III-03	17.95	
F100371	000150699	AUTO WRECKERS WDOT 28		III-03	15.81	
F1 08 71	000150701	AUTO WRECKERS WDOT 66		III-03	22.71	
F100371	000150705	AUTO WRECKERS WDOT PMF14		III-03	15.31	
F100371	000150706	AUTO WRECKERS WDOT 14		III-03	15.12	
F100371	000150710	AUTO WRECKERS WDOT 00TEAL		III-03	21.75	

Date: 10/08/97

**RUNNING TOTAL: 700.84**

Time: 08:31:43

3764.98

**DETAILED TICKET LISTING**

Emerald Park Landfill

FOR THE DATE RANGE 10/07/97 — 10/07/97

MATERIAL:&lt;ALL MATERIALS&gt; CUSTOMER:AUTO WRECKERS WDOT C/O

CUSTOMER	TICKET #	CUSTOMER	TRUCK NUM	MATERIAL	NT TONS	YDS
F100371	000150711	AUTO WRECKERS WDOT JD1		III-03	14.16	
F100371	000150712	AUTO WRECKERS WDOT 97		III-03	17.94	
F100371	000150718	AUTO WRECKERS WDOT 26		III-03	13.36	
F100371	000150720	AUTO WRECKERS WDOT T6		III-03	18.04	
F100371	000150727	AUTO WRECKERS WDOT 63		III-03	19.02	
F100371	000150738	AUTO WRECKERS WDOT 28		III-03	13.25	
F100371	000150747	AUTO WRECKERS WDOT 66		III-03	15.15	
F100371	000150758	AUTO WRECKERS WDOT JD1		III-03	12.92	
F100371	000150762	AUTO WRECKERS WDOT 26		III-03	14.56	
F100371	000150766	AUTO WRECKERS WDOT 14		III-03	16.04	
F100371	000150768	AUTO WRECKERS WDOT PMF14		III-03	13.00	
F100371	000150772	AUTO WRECKERS WDOT 00TEAL		III-03	19.83	
F100371	000150773	AUTO WRECKERS WDOT 97		III-03	19.37	
F100371	000150778	AUTO WRECKERS WDOT T6		III-03	20.13	
F100371	000150781	AUTO WRECKERS WDOT 63		III-03	13.67	
F100371	000150782	AUTO WRECKERS WDOT 28		III-03	14.70	

Date: 10/08/97

**RUNNING TOTAL: 955.98**

Time: 08:31:43

**DETAILED TICKET LISTING**

Emerald Park Landfill

FOR THE DATE RANGE 10/08/97 — 10/08/97

MATERIAL&lt;ALL MATERIALS&gt;

CUSTOMER:AUTO WRECKERS WDOT C/O

CUSTOMER	TICKET #	CUSTOMER	TRUCK NUM	MATERIAL	NT TONS	YDS
F100371	000150829	AUTO WRECKERS	WDOT RED52	III-03	11.60	
F100371	000150832	AUTO WRECKERS	WDOT 63	III-03	16.26	
F100371	000150835	AUTO WRECKERS	WDOT 66	III-03	9.91	
F100371	000150839	AUTO WRECKERS	WDOT JD1	III-03	12.39	
F100371	000150843	AUTO WRECKERS	WDOT REDWH130	III-03	11.29	
F100371	000150850	AUTO WRECKERS	WDOT 14	III-03	13.95	
F100371	000150851	AUTO WRECKERS	WDOT PMF14	III-03	11.85	
F100371	000150852	AUTO WRECKERS	WDOT 26	III-03	14.21	
F100371	000150870	AUTO WRECKERS	WDOT RED52	III-03	10.66	
F100371	000150874	AUTO WRECKERS	WDOT 63	III-03	17.72	
F100371	000150879	AUTO WRECKERS	WDOT 66	III-03	15.15	
F100371	000150884	AUTO WRECKERS	WDOT REDWH130	III-03	12.70	
F100371	000150890	AUTO WRECKERS	WDOT JD1	III-03	13.98	
F100371	000150892	AUTO WRECKERS	WDOT 14	III-03	13.73	
F100371	000150893	AUTO WRECKERS	WDOT 26	III-03	14.59	
F100371	000150895	AUTO WRECKERS	WDOT PMF14	III-03	13.40	
F100371	000150913	AUTO WRECKERS	WDOT RED52	III-03	14.39	
F100371	000150919	AUTO WRECKERS	WDOT 63	III-03	16.95	
F100371	000150923	AUTO WRECKERS	WDOT 66	III-03	16.15	
F100371	000150932	AUTO WRECKERS	WDOT JD1	III-03	12.56	
F100371	000150933	AUTO WRECKERS	WDOT REDWH130	III-03	11.84	
F100371	000150936	AUTO WRECKERS	WDOT 14	III-03	14.88	
F100371	000150943	AUTO WRECKERS	WDOT 26	III-03	13.40	
F100371	000150945	AUTO WRECKERS	WDOT PMF14	III-03	12.74	
F100371	000150962	AUTO WRECKERS	WDOT RED52	III-03	13.54	
F100371	000150970	AUTO WRECKERS	WDOT 63	III-03	16.25	
F100371	000150977	AUTO WRECKERS	WDOT 66	III-03	15.41	
F100371	000150980	AUTO WRECKERS	WDOT JD1	III-03	12.36	
F100371	000150984	AUTO WRECKERS	WDOT REDWH130	III-03	8.86	
F100371	000150990	AUTO WRECKERS	WDOT 14	III-03	15.21	
F100371	000150994	AUTO WRECKERS	WDOT 26	III-03	11.98	
F100371	000150996	AUTO WRECKERS	WDOT PMF14	III-03	13.07	
F100371	000151008	AUTO WRECKERS	WDOT RED52	III-03	14.60	
F100371	000151012	AUTO WRECKERS	WDOT 63	III-03	15.34	
F100371	000151024	AUTO WRECKERS	WDOT 66	III-03	16.43	
F100371	000151028	AUTO WRECKERS	WDOT JD1	III-03	13.01	
F100371	000151035	AUTO WRECKERS	WDOT REDWH130	III-03	17.08	
F100371	000151041	AUTO WRECKERS	WDOT 14	III-03	14.22	
F100371	000151043	AUTO WRECKERS	WDOT 26	III-03	15.23	
F100371	000151046	AUTO WRECKERS	WDOT PMF14	III-03	14.91	
F100371	000151052	AUTO WRECKERS	WDOT 28	III-03	15.65	
F100371	000151059	AUTO WRECKERS	WDOT RED52	III-03	15.91	
F100371	000151062	AUTO WRECKERS	WDOT 63	III-03	15.50	
F100371	000151075	AUTO WRECKERS	WDOT 66	III-03	18.35	
F100371	000151082	AUTO WRECKERS	WDOT JD1	III-03	12.33	

Date: 10/09/97

**RUNNING TOTAL: 631.54**

Time: 07:37:33

4531.94

**DETAILED TICKET LISTING**

Emerald Park Landfill

FOR THE DATE RANGE 10/08/97 — 10/08/97

MATERIAL&lt;ALL MATERIALS&gt; CUSTOMER:AUTO WRECKERS WDOT C/O

CUSTOMER	TICKET #	CUSTOMER	TRUCK NUM	MATERIAL	NT TONS	YDS
F100371	000151095	AUTO WRECKERS	WDOT REDWH130	III-03	13.98	
F100371	000151103	AUTO WRECKERS	WDOT 14	III-03	16.23	
F100371	000151105	AUTO WRECKERS	WDOT 26	III-03	15.62	
F100371	000151106	AUTO WRECKERS	WDOT PMF14	III-03	13.75	
F100371	000151109	AUTO WRECKERS	WDOT 28	III-03	16.20	
F100371	000151112	AUTO WRECKERS	WDOT RED52	III-03	17.93	
F100371	000151121	AUTO WRECKERS	WDOT 63	III-03	21.58	
F100371	000151124	AUTO WRECKERS	WDOT 66	III-03	20.13	

Date: 10/09/97

**RUNNING TOTAL: 766.96**

Time: 07:37:33

**DETAILED TICKET LISTING**

Emerald Park Landfill

FOR THE DATE RANGE 10/09/97 — 10/09/97

MATERIAL&lt;ALL MATERIALS&gt;

CUSTOMER AUTO WRECKERS WDOT C/O

CUSTOMER	TICKET #	CUSTOMER	TRUCK NUM	MATERIAL	NT TONS	YDS
F100371	000151182	AUTO WRECKERS WDOT T6		III-03	17.31	
F100371	000151187	AUTO WRECKERS WDOT 63		III-03	17.86	
F100371	000151193	AUTO WRECKERS WDOT 66		III-03	17.08	
F100371	000151195	AUTO WRECKERS WDOT JD1		III-03	10.05	
F100371	000151196	AUTO WRECKERS WDOT PMF14		III-03	12.09	
F100371	000151199	AUTO WRECKERS WDOT 14		III-03	14.76	
F100371	000151205	AUTO WRECKERS WDOT 15		III-03	15.25	
F100371	000151206	AUTO WRECKERS WDOT 6		III-03	13.23	
F100371	000151212	AUTO WRECKERS WDOT 26		III-03	12.82	
F100371	000151224	AUTO WRECKERS WDOT T6		III-03	20.20	
F100371	000151233	AUTO WRECKERS WDOT 63		III-03	14.57	
F100371	000151239	AUTO WRECKERS WDOT 66		III-03	18.33	
F100371	000151241	AUTO WRECKERS WDOT JD1		III-03	10.40	
F100371	000151246	AUTO WRECKERS WDOT PMF14		III-03	12.41	
F100371	000151247	AUTO WRECKERS WDOT 14		III-03	14.59	
F100371	000151248	AUTO WRECKERS WDOT 6		III-03	10.11	
F100371	000151254	AUTO WRECKERS WDOT 15		III-03	12.86	
F100371	000151259	AUTO WRECKERS WDOT 26		III-03	13.30	
F100371	000151263	AUTO WRECKERS WDOT T6		III-03	19.15	
F100371	000151278	AUTO WRECKERS WDOT 63		III-03	17.85	
F100371	000151288	AUTO WRECKERS WDOT 66		III-03	16.76	
F100371	000151289	AUTO WRECKERS WDOT JD1		III-03	12.13	
F100371	000151294	AUTO WRECKERS WDOT PMF14		III-03	14.41	
F100371	000151296	AUTO WRECKERS WDOT 6		III-03	14.59	
F100371	000151298	AUTO WRECKERS WDOT 14		III-03	14.97	
F100371	000151301	AUTO WRECKERS WDOT 15		III-03	12.85	
F100371	000151306	AUTO WRECKERS WDOT T6		III-03	19.07	
F100371	000151307	AUTO WRECKERS WDOT 26		III-03	14.20	
F100371	000151315	AUTO WRECKERS WDOT 63		III-03	17.60	
F100371	000151327	AUTO WRECKERS WDOT JD1		III-03	12.93	
F100371	000151334	AUTO WRECKERS WDOT 66		III-03	15.48	
F100371	000151337	AUTO WRECKERS WDOT PMF14		III-03	15.07	
F100371	000151339	AUTO WRECKERS WDOT 14		III-03	13.99	
F100371	000151342	AUTO WRECKERS WDOT 15		III-03	15.19	
F100371	000151344	AUTO WRECKERS WDOT 6		III-03	14.90	
F100371	000151346	AUTO WRECKERS WDOT T6		III-03	21.50	
F100371	000151347	AUTO WRECKERS WDOT 26		III-03	15.61	
F100371	000151357	AUTO WRECKERS WDOT 63		III-03	22.33	
F100371	000151378	AUTO WRECKERS WDOT JD1		III-03	12.36	
F100371	000151387	AUTO WRECKERS WDOT 15		III-03	13.26	
F100371	000151388	AUTO WRECKERS WDOT 66		III-03	16.02	
F100371	000151392	AUTO WRECKERS WDOT PMF14		III-03	15.24	
F100371	000151395	AUTO WRECKERS WDOT 6		III-03	12.01	
F100371	000151396	AUTO WRECKERS WDOT 14		III-03	14.39	
F100371	000151399	AUTO WRECKERS WDOT 26		III-03	14.79	

Date: 10/09/97

**RUNNING TOTAL: 675.87**

Time: 16:54:43

5304.49

**DETAILED TICKET LISTING**

Emerald Park Landfill

FOR THE DATE RANGE 10/09/97 — 10/09/97

MATERIAL:&lt;ALL MATERIALS&gt; CUSTOMER: AUTO WRECKERS WDOT C/O

CUSTOMER TICKET #	CUSTOMER	TRUCK NUM	MATERIAL	NT TONS	YDS
F100371	000151409	AUTO WRECKERS WDOT T6	III-03	15.74	
F100371	000151427	AUTO WRECKERS WDOT 63	III-03	21.10	
F100371	000151435	AUTO WRECKERS WDOT JD1	III-03	15.91	
F100371	000151446	AUTO WRECKERS WDOT 15	III-03	14.24	
F100371	000151460	AUTO WRECKERS WDOT 14	III-03	15.49	
F100371	000151461	AUTO WRECKERS WDOT PMF14	III-03	14.20	

Date: 10/09/97

**RUNNING TOTAL:** 772.55

Time: 16:54:43

**DETAILED TICKET LISTING**

Emerald Park Landfill

FOR THE DATE RANGE 10/20/97 — 10/20/97

MATERIAL:&lt;ALL MATERIALS&gt;

CUSTOMER:AUTO WRECKERS WDOT C/O

CUSTOMER	TICKET #	CUSTOMER	TRUCK NUM	MATERIAL	NT TONS	YDS
F100371	000153212	AUTO WRECKERS	WDOT 14	III-03	14.00	
F100371	000153213	AUTO WRECKERS	WDOT PMF14	III-03	17.66	
F100371	000153216	AUTO WRECKERS	WDOT RED52	III-03	14.42	
F100371	000153222	AUTO WRECKERS	WDOT 63	III-03	21.73	
F100371	000153224	AUTO WRECKERS	WDOT 66	III-03	18.45	
F100371	000153253	AUTO WRECKERS	WDOT 14	III-03	16.25	
F100371	000153260	AUTO WRECKERS	WDOT PMF14	III-03	15.88	
F100371	000153262	AUTO WRECKERS	WDOT RED52	III-03	16.52	
F100371	000153265	AUTO WRECKERS	WDOT 63	III-03	18.63	
F100371	000153269	AUTO WRECKERS	WDOT 66	III-03	20.45	
F100371	000153296	AUTO WRECKERS	WDOT 14	III-03	15.98	
F100371	000153297	AUTO WRECKERS	WDOT PMF14	III-03	15.39	
F100371	000153298	AUTO WRECKERS	WDOT RED52	III-03	14.95	
F100371	000153300	AUTO WRECKERS	WDOT 63	III-03	20.39	
F100371	000153307	AUTO WRECKERS	WDOT 66	III-03	20.40	
F100371	000153329	AUTO WRECKERS	WDOT 14	III-03	15.83	
F100371	000153330	AUTO WRECKERS	WDOT PMF14	III-03	15.04	
F100371	000153333	AUTO WRECKERS	WDOT 63	III-03	19.17	
F100371	000153336	AUTO WRECKERS	WDOT RED52	III-03	13.96	
F100371	000153341	AUTO WRECKERS	WDOT 66	III-03	17.21	
F100371	000153372	AUTO WRECKERS	WDOT 14	III-03	13.94	
F100371	000153376	AUTO WRECKERS	WDOT PMF14	III-03	12.79	
F100371	000153378	AUTO WRECKERS	WDOT 63	III-03	15.27	
F100371	000153381	AUTO WRECKERS	WDOT RED52	III-03	13.46	
F100371	000153386	AUTO WRECKERS	WDOT 66	III-03	15.53	
F100371	000153417	AUTO WRECKERS	WDOT 14	III-03	11.48	
F100371	000153418	AUTO WRECKERS	WDOT PMF14	III-03	12.28	
F100371	000153420	AUTO WRECKERS	WDOT 63	III-03	18.37	
F100371	000153428	AUTO WRECKERS	WDOT 66	III-03	15.14	
F100371	000153430	AUTO WRECKERS	WDOT RED52	III-03	11.87	

5786.93

Date: 10/21/97

RUNNING TOTAL: 482.44

Time: 07:45:09



# DETAILED TICKET LISTING

Emerald Park Landfill

FOR THE DATE RANGE 10/21/97 — 10/21/97

MATERIAL<ALL MATERIALS> CUSTOMER<AUTO WRECKERS WDOT C/O

CUSTOMER	TICKET #	CUSTOMER	TRUCK NUM	MATERIAL	NT TONS	YDS
F100371	000153493	AUTO WRECKERS	WDOT RED52	III-03	11.51	
F100371	000153494	AUTO WRECKERS	WDOT 14	III-03	14.29	
F100371	000153531	AUTO WRECKERS	WDOT RED52	III-03	15.87	
F100371	000153572	AUTO WRECKERS	WDOT RED52	III-03	15.70	
F100371	000153618	AUTO WRECKERS	WDOT RED52	III-03	17.82	
F100371	000153674	AUTO WRECKERS	WDOT RED52	III-03	15.75	
F100371	000153717	AUTO WRECKERS	WDOT RED52	III-03	14.28	
F100371	000153734	AUTO WRECKERS	WDOT 14	III-03	17.89	

5910.04

Date: 10/22/97

**RUNNING TOTAL: 123.11**

Time: 07:58:13

**DETAILED TICKET LISTING**

Emerald Park Landfill

FOR THE DATE RANGE 10/28/97 — 10/28/97

MATERIAL&lt;ALL MATERIALS&gt; CUSTOMER: AUTO WRECKERS WDOT C/O

CUSTOMER	TICKET #	CUSTOMER	TRUCK NUM	MATERIAL	NT TONS	YDS
F100371	000154917	AUTO WRECKERS	WDOT WHITE08	III-03	17.14	
F100371	000154919	AUTO WRECKERS	WDOT 9	III-03	16.72	
F100371	000154921	AUTO WRECKERS	WDOT 63	III-03	18.12	
F100371	000154923	AUTO WRECKERS	WDOT 28	III-03	17.14	
F100371	000154930	AUTO WRECKERS	WDOT 32	III-03	17.87	
F100371	000154933	AUTO WRECKERS	WDOT 14	III-03	15.24	
F100371	000154934	AUTO WRECKERS	WDOT PMF14	III-03	16.92	
F100371	000154935	AUTO WRECKERS	WDOT 8	III-03	14.41	
F100371	000154955	AUTO WRECKERS	WDOT 9	III-03	15.22	
F100371	000154958	AUTO WRECKERS	WDOT 63	III-03	16.91	
F100371	000154960	AUTO WRECKERS	WDOT 28	III-03	16.04	
F100371	000154962	AUTO WRECKERS	WDOT 32	III-03	16.53	
F100371	000154965	AUTO WRECKERS	WDOT 14	III-03	19.41	
F100371	000154967	AUTO WRECKERS	WDOT PMF14	III-03	16.24	
F100371	000154971	AUTO WRECKERS	WDOT 8	III-03	13.99	
F100371	000154972	AUTO WRECKERS	WDOT WHITE08	III-03	14.53	
F100371	000154998	AUTO WRECKERS	WDOT 9	III-03	18.09	
F100371	000155007	AUTO WRECKERS	WDOT 63	III-03	16.57	
F100371	000155012	AUTO WRECKERS	WDOT 28	III-03	16.76	
F100371	000155015	AUTO WRECKERS	WDOT 32	III-03	18.01	
F100371	000155017	AUTO WRECKERS	WDOT 14	III-03	17.59	
F100371	000155018	AUTO WRECKERS	WDOT PMF14	III-03	18.16	
F100371	000155019	AUTO WRECKERS	WDOT 8	III-03	15.79	
F100371	000155024	AUTO WRECKERS	WDOT WHITE08	III-03	16.38	
F100371	000155035	AUTO WRECKERS	WDOT 9	III-03	16.75	
F100371	000155052	AUTO WRECKERS	WDOT 63	III-03	22.40	
F100371	000155054	AUTO WRECKERS	WDOT 28	III-03	16.23	
F100371	000155057	AUTO WRECKERS	WDOT 32	III-03	18.35	
F100371	000155058	AUTO WRECKERS	WDOT 8	III-03	15.65	
F100371	000155062	AUTO WRECKERS	WDOT 14	III-03	17.12	
F100371	000155067	AUTO WRECKERS	WDOT PMF14	III-03	18.34	
F100371	000155072	AUTO WRECKERS	WDOT WHITE08	III-03	15.79	
F100371	000155077	AUTO WRECKERS	WDOT 9	III-03	14.82	
F100371	000155100	AUTO WRECKERS	WDOT 63	III-03	20.94	
F100371	000155102	AUTO WRECKERS	WDOT 28	III-03	19.30	
F100371	000155109	AUTO WRECKERS	WDOT 8	III-03	15.84	
F100371	000155111	AUTO WRECKERS	WDOT 32	III-03	18.18	
F100371	000155114	AUTO WRECKERS	WDOT 14	III-03	17.08	
F100371	000155117	AUTO WRECKERS	WDOT PMF14	III-03	16.56	
F100371	000155124	AUTO WRECKERS	WDOT WHITE08	III-03	13.03	
F100371	000155133	AUTO WRECKERS	WDOT 9	III-03	13.42	
F100371	000155143	AUTO WRECKERS	WDOT 63	III-03	16.59	
F100371	000155144	AUTO WRECKERS	WDOT 28	III-03	14.54	
F100371	000155156	AUTO WRECKERS	WDOT 32	III-03	14.71	
F100371	000155166	AUTO WRECKERS	WDOT 8	III-03	16.32	

Date: 10/29/97

**RUNNING TOTAL: 751.74**

Time: 07:31:23

Final  
6731.16 tons

**DETAILED TICKET LISTING**

*Emerald Park Landfill*

FOR THE DATE RANGE 10/28/97 — 10/28/97

MATERIAL<ALL MATERIALS> CUSTOMER: AUTO WRECKERS WDOT C/O

CUSTOMER TICKET #	CUSTOMER	TRUCK NUM	MATERIAL	NT TONS	YDS
F100371	000155169	AUTO WRECKERS WDOT	WHITE08	III-03	18.95
F100371	000155171	AUTO WRECKERS WDOT	14	III-03	14.63
F100371	000155172	AUTO WRECKERS WDOT	PMF14	III-03	18.08
F100371	000155181	AUTO WRECKERS WDOT	28	III-03	17.72

Date: 10/29/97

**RUNNING TOTAL:** 821.12

Time: 07:31:23



# Appendix F

## Drum Characterization Data

---

**SAMPLING OF ABANDONED CONTAINERS - PROJECT # JEA - 1067  
10-23-97 PENNSYLVANIA AVENUE SITE ST. FRANCIS, WI**

When the field crew arrived on site, the weather was overcast with moderate variable winds, and temperatures in the mid 40's. Level 'C' personal protective equipment was donned and the material was visually inspected.

This material to be disposed of had been segregated from the main excavation and placed on plastic. It was comprised of a large pile of dirt, partial drums and product. No free liquids were evident. All drums were decomposing with loose, crumbling solid product partially spilling out and comingling with the soil. Drums still bearing product were separated from the pile and staged apart from each other. Each was found to be visually consistent with one of the following product types:

- paint, resin, or adhesive solids (Waste Stream A)
- foundry sand and slag (Waste Stream B)
- asphaltic tar solids (Waste Stream C)
- metal parts/plated debris (Waste Stream D)
- firebrick (Waste Stream F)

Waste Stream affiliation as described above was recorded on each container. The remainder of material was soil with traces of the comingled products. (Waste Stream E).

Two one quart samples of each waste stream were taken, with the exception of Waste Stream C, of which one quart was taken. All samples taken were representative grabs, with every partial drum represented.

All material was tarped and the area was secured.

Since comprehensive analysis was planned, bulk disposal was necessary, and the products had already extensively comingled, it was decided that the samples and waste streams would be further coalesced into two:

- organic type waste - former Waste Streams 'A' and 'C'
- inorganic type waste - former Waste Streams 'B', 'D', 'E', and 'F'



**SUPERIOR SPECIAL SERVICES, INC.**  
 1275 Mineral Springs Drive  
 Port Washington, WI 53074  
 Phone (414) 284-6855  
 Fax (414) 284-3775

# CHAIN OF CUSTODY RECORD

No 7851

P.02

94%



Client: RMT Pennsylvania Ave ANALYTICAL REQUESTED  
 Project No.: JEFT 1067  
 Sampling Site: \_\_\_\_\_  
 Sampler: Linda Schmidt

DATE	TIME	SAMPLE ID.	DESCRIPTION	BOTTLE TOTAL & TYPE	SAMPLE SOURCE	SAMPLE PROCEDURE	COMPOSITE OR GRAB	PRESERVATION METHOD
10-23-97	4:00 P.M.	①	Waste Stream A Paint/Resin Solids (Non-Pro.)	1 Ligt amber glass	See Field notes	multi-point grab	C	ice
		②	Waste Stream B Foundry Sand/ Slag					
		③	Waste Stream Asphalt/ Asbestos	1 Ligt amber glass				
		④	Waste Stream D Painting Debris	2 Ligt amber glass				
		⑤	Waste Stream E Firebrick - Asbestos					
		⑥	Waste Stream F Soil w/ trace Solids, Foundry Debris					

Steve make composite samples of the following

- ① Possible organic wastes
- ② Possible inorganic wastes

SEND TO NET FOR Protocol 2 (Risk analysis) - Results to Dave Johnson

### CUSTODY TRANSFERS

Relinquished by: Linda Schmidt Date: 10-23-97 Time: 4:00 PM

Received by: \_\_\_\_\_

1. \_\_\_\_\_  
 2. \_\_\_\_\_  
 3. \_\_\_\_\_  
 4. \_\_\_\_\_

I certify that: \_\_\_\_\_

Witness: \_\_\_\_\_

Signature: \_\_\_\_\_

NOV-19-1997 10:23

414 568 2537 P.03

SUPERIOR SPECIAL SERVICES

NOV-19-1997 10:29



**SUPERIOR SPECIAL SERVICES, INC.**  
 1275 Mineral Springs Drive  
 Port Washington, WI 53074  
 Phone (414) 284-6855  
 Fax (414) 284-3775

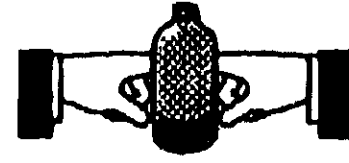
# CHAIN OF CUSTODY RECORD

No 7856

P. 03

7608  
829116

For Results To:  
 Dave Johnson  
 414-780-1085



974

Client: RMT  
 Project No.: JEA 1067  
 Sampling Site: \_\_\_\_\_  
 Sampler: LS

ANALYTICAL REQUESTED

Asbestos									
Asbestos									

DATE	TIME	SAMPLE I.D.	DESCRIPTION	BOTTLE TOTAL & TYPE	SAMPLE SOURCE	SAMPLE PROCEDURE	COMPOSITE OR GRAB	PRESERVATION METHOD
10/23/97	4:00 PM	970573	Comp. of WS A, B, C	2 x 1 qt	1 qt jars	Scoop	C	JCI 97-A096723
1	1	970574	Comp. of WS B, D, E, F	1				97-A096724

**CUSTODY TRANSFERS**

Emergency Contact #: 1-800-688-4005

Relinquished by: Steve Breun Date: 11-29-97 Time: 5:00 PM  
 Received by: Bl. R. [Signature]  
10/3/97 4:00

I certify that this is a representative sample of:

Witness: \_\_\_\_\_

Signature: \_\_\_\_\_

414 568 2537 P.04

SUPERIOR SPECIAL SERVICES

NOV-19-1997 10:29

NOV-19-1997 10:24







**SPECIALIZED ASSAYS, INC.**

2960 Foster Creighton Dr.  
 P.O. Box 40566  
 Nashville, TN 37204-0566  
 Phone 1-615-726-0177

**ANALYTICAL REPORT**

SUPERIOR SPECIAL SERVICES, INC 760B  
 STEVEN J. BIERMANN  
 1275 MINERAL SPRINGS DRIVE  
 PORT WASHINGTON, WI 53074

Lab Number: 97-A096724  
 Sample ID: 970879  
 Sample Type: Solid waste  
 Site ID:

Project: JEA 1067  
 Project Name: RMT  
 Sampler: L. S.

Date Collected: 10/23/97  
 Time Collected: 16:00  
 Date Received: 10/31/97  
 Time Received: 9:00

Analyte	Result	Units	LDD	LDD	Dil		Date	Time	Analyst	Method	Batch
					Factor						
Arsenic	15300	ug/kg	1110	1110	1		11/ 4/97	15:32	C. Holmes	60100	1784
Barium	195000	ug/kg	1110	1110	1		11/ 4/97	15:32	C. Holmes	60100	1784
Cadmium	111000	ug/kg	1110	1110	1		11/ 4/97	15:32	C. Holmes	60100	1784
Chromium	1470000	ug/kg	1110	1110	1		11/ 4/97	15:32	C. Holmes	60100	1784
Copper	6080000	ug/kg	1110	1110	1		11/ 4/97	15:32	C. Holmes	60100	1784
Lead	3420000	ug/kg	1110	1110	1		11/ 4/97	15:32	C. Holmes	60100	1784
Mercury	4330	ug/kg	116	116	1		11/ 5/97	14:53	C. Holmes	7471	1785
Nickel	859000	ug/kg	1110	1110	1		11/ 4/97	15:32	C. Holmes	60100	1784
Selenium	ND	ug/kg	1110	1110	1		11/ 4/97	15:32	C. Holmes	60100	1784
Silver	2440	ug/kg	1110	1110	1		11/ 4/97	15:32	C. Holmes	60100	1784
Zinc	8920000	ug/kg	11100	11100	1		11/ 4/97	15:32	C. Holmes	60100	1784
pH	8.30	units					11/ 1/97	15:49	F. Frye	9045	1923

Analyte	Result	Units	Report Limit	Scan Limit	Dil		Date	Time	Analyst	Method	Batch
					Factor						
<b>*PESTICIDE/PCP's/HERBICIDES*</b>											
Aroclor 1016	ND	ng/kg	0.2326	0.0333	1		11/ 4/97	14:10	M. Klepper	9081A	2556
Aroclor 1221	ND	ng/kg	0.4651	0.0667	1		11/ 4/97	14:10	M. Klepper	9081A	2556
Aroclor 1232	ND	ng/kg	0.2326	0.0333	1		11/ 4/97	14:10	M. Klepper	9081A	2556
Aroclor 1242	4.744	ng/kg	0.2326	0.0333	1		11/ 4/97	14:10	M. Klepper	9081A	2556
Aroclor 1243	ND	ng/kg	0.2326	0.0333	1		11/ 4/97	14:10	M. Klepper	9081A	2556
Aroclor 1254	6.116	ng/kg	0.2326	0.0333	1		11/ 4/97	14:10	M. Klepper	9081A	2556
Aroclor 1260	ND	ng/kg	0.2326	0.0333	1		11/ 4/97	14:10	M. Klepper	9081A	2556

<b>*GENERAL CHEMISTRY PARAMETERS*</b>											
% Dry Weight	86.	%			1		11/ 4/97	17:11	C. Gerenser	CLP	1768
Reactive Cyanide	ND	ng/kg	2.0	2.0	1		11/ 3/97	16:49	A. Hardison	SM-846	2178
Reactive Sulfide	ND	ng/kg	20.0	20.0	1		11/ 3/97	16:49	A. Hardison	SM-846	2178
Fluorides	2.11	ng/kg	0.500	0.500	1		11/ 4/97	16:18	CHollingsw	9065	2701
Paint Filter Test	No Free Liquids						11/ 4/97	13:30	D. Hoover	9095	1769
Color, 5 liter	2060	ng/kg	5.0	1.0	1		11/ 4/97	14:36	CHollingsw	9056	1778
Flash Point, Open Cup	NO FLASH TO 200F						11/ 5/97	16:02	D. Hoover	ASTM D-92	1788



**SPECIALIZED ASSAYS, INC.**

2960 Foster Creighton Dr.  
 P.O. Box 40566  
 Nashville, TN 37204-0566  
 Phone 1-615-726-0177

**ANALYTICAL REPORT**

Laboratory Number 97-A096724  
 Sample ID: 970879

Page 2

**ICLP Results**

Analyte	Result	Units	Matrix Spike		Date	Method
			Reg Limit	Recovery (%)		
Arsenic	< 0.10	ng/l	5.0	101	11/11/97	60100
Barium	< 1.00	ng/l	100	84	11/11/97	60100
Cadmium	1.30	ng/l	1.0	94	11/11/97	60100
Chromium	< 0.50	ng/l	5.0	91	11/11/97	60100
Copper	27.3	ng/l	N/A	92	11/11/97	60100
Lead	7.90	ng/l	5.0	94	11/11/97	60100
Mercury	< 0.010	ng/l	0.20	131	11/11/97	7471
Nickel	2.70	ng/l	N/A	94	11/11/97	60100
Selenium	< 0.10	ng/l	1.0	104	11/11/97	60100
Silver	< 0.10	ng/l	5.0	93	11/11/97	60100
Zinc	109.	ng/l	N/A	90	11/11/97	60100
Benzene	< 0.10	ng/l	0.5	106	11/ 3/97	8260
Carbon tetrachloride	< 0.1	ng/l	0.5	86	11/ 3/97	8260
Chlorobenzene	< 0.10	ng/l	100	102	11/ 3/97	8260
Chloroform	< 0.100	ng/l	6.0	116	11/ 3/97	8260
1,2-Dichloroethane	< 0.10	ng/l	0.5	100	11/ 3/97	8260
1,1-Dichloroethene	< 0.1	ng/l	0.7	112	11/ 3/97	8260
Methylglyketone	< 1.0	ng/l	200	124	11/ 3/97	8260
Tetrachloroethene	< 0.1	ng/l	0.7	134	11/ 3/97	8260
Trichloroethene	< 0.10	ng/l	0.5	104	11/ 3/97	8260
Vinyl Chloride	< 0.1	ng/l	0.2	127	11/ 3/97	8260
Bresole	< 0.1	ng/l	200	40	11/ 5/97	8270
1,4-Dichlorobenzene	< 0.1	ng/l	7.5	45	11/ 5/97	8270
2,4-Dinitrotoluene	< 0.10	ng/l	0.13	40	11/ 5/97	8270
Hexachlorobenzene	< 0.10	ng/l	0.13	30	11/ 5/97	8270
Hexchlor-1,3-butadien	< 0.1	ng/l	0.5	45	11/ 5/97	8270
Hexachloroethane	< 0.1	ng/l	3.0	35	11/ 5/97	8270
Nitrobenzene	< 0.1	ng/l	2.0	50	11/ 5/97	8270
Pentachlorophenol	< 0.1	ng/l	100	25	11/ 5/97	8270
Pyridine	< 0.1	ng/l	5.0	20	11/ 5/97	8270
2,4,5-Trichlorophenol	< 0.1	ng/l	400	20	11/ 5/97	8270
2,4,6-Trichlorophenol	< 0.1	ng/l	2.0	20	11/ 5/97	8270
ICLP Extraction	Completed				11/ 1/97	1311
Zero Headspace Extraction	Completed				11/ 1/97	1311

ND = Not detected at the report limit

Flash point/ignitability reported to the nearest 10 deg F

Sample Extraction Data

PCMs Extracted 11/ 3/97 Wt extracted: 5.00 gr Extract Volume: 10.0 ml C Kardwell



SPECIALIZED ASSAYS, INC.

2960 Foster Creighton Dr.  
P.O. Box 40566  
Nashville, TN 37204-0566  
Phone 1-615-726-0177

ANALYTICAL REPORT

Laboratory Number: 97-A096724

Sample ID: 970879

Page 3

---

<u>Surrogate</u>	<u>% Recovery</u>	<u>Target Range</u>
UDA Surrogate, 1,2-Dichloroethane, d4	105.	88. - 124.
UDA Surrogate, Toluene d8	107.	86. - 108.
UDA Surrogate, 4-Fluorofluorobenzene	99.0	77. - 118.
UDA Surr., Nitrobenzene-d5	48.0	15. - 115.
UDA Surrogate, 2-Fluorobiphenyl	35.0	93. - 114.
UDA Surrogate, Terphenyl d14	58.6	40 - 130.
UDA Surrogate, Phenol d5	15.0	16. - 118.
UDA Surrogate, 2-Fluorophenol	15.0	20. - 118.
UDA Surrogate, 1,4,5-Tribromophenol	30.0	10. - 123.
Rest/PCB Surrogate, TCXX	93.0	40. - 150.

All samples have been corrected for dry weight.

Alkalinity and Acidity cannot be performed on a solid matrix

Report Approved By: Michael H. Dunn Report Date: 11/11/97

Theodore J. Duello, Ph.D., Q.A. Officer  
Michael H. Dunn, M.S., Technical Director  
Danny R. Hale, M.S., Laboratory Director

Laboratory Certification Number: 998010430



SPECIALIZED ASSAYS, INC.

2960 Foster Creighton Dr.  
P.O. Box 40566  
Nashville, TN 37204-0566  
Phone 1-615-726-0177

ANALYTICAL REPORT

SUPERIOR SPECIAL SERVICES, INC 7608  
STEVEN J. BIERMANN  
1275 MINERAL SPRINGS DRIVE  
PORT WASHINGTON, WI 53074

Lab Number: 97-A096723  
Sample ID: 970878  
Sample Type: Solid waste  
Site ID:

Project: JEA 1067  
Project Name: RMT  
Sampler: L. S.

Date Collected: 10/23/97  
Time Collected: 16:00  
Date Received: 10/31/97  
Time Received: 9:00

Analyte	Result	Unit	LDD	LDR	Dil		Date	Time	Analyst	Method	Batch
					Factor						
Arsenic	6510	ug/kg	1120	1120	1		11/ 4/97	15:32	C. Holmes	6010B	1784
Barium	572000	ug/kg	1120	1120	1		11/ 4/97	15:32	C. Holmes	6010B	1784
Cadmium	6960	ug/kg	1120	1120	1		11/ 4/97	15:32	C. Holmes	6010B	1784
Chromium	396000	ug/kg	1120	1120	1		11/ 4/97	15:32	C. Holmes	6010B	1784
Copper	264000	ug/kg	1120	1120	1		11/ 4/97	15:32	C. Holmes	6010B	1784
Lead	2110000	ug/kg	1120	1120	1		11/ 4/97	15:32	C. Holmes	6010B	1784
Mercury	690	ug/kg	111	111	1		11/ 5/97	14:53	C. Holmes	7471	1785
Nickel	35200	ug/kg	1120	1120	1		11/ 4/97	15:32	C. Holmes	6010B	1784
Selenium	ND	ug/kg	1120	1120	1		11/ 4/97	15:32	C. Holmes	6010B	1784
Silver	1800	ug/kg	1120	1120	1		11/ 4/97	15:32	C. Holmes	6010B	1784
Zinc	1980000	ug/kg	11200	11200	1		11/ 4/97	15:32	C. Holmes	6010B	1784
pH	7.60	units					11/ 1/97	15:49	F. Frye	9045	1923

Analyte	Result	Units	Report Limit	Quan Limit	Dil		Date	Time	Analyst	Method	Batch
					Factor						

\*PESTICIDE/PCB'S/HERBICIDES\*

Aroclor 1016	ND	ng/kg	2.222	0.0333	10		11/ 4/97	13:42	H. Klepper	8081A	2556
Aroclor 1221	ND	ng/kg	4.444	0.0667	10		11/ 4/97	13:42	H. Klepper	8081A	2556
Aroclor 1232	ND	ng/kg	2.222	0.0333	10		11/ 4/97	13:42	H. Klepper	8081A	2556
Aroclor 1242	ND	ng/kg	2.222	0.0333	10		11/ 4/97	13:42	H. Klepper	8081A	2556
Aroclor 1248	ND	ng/kg	2.222	0.0333	10		11/ 4/97	13:42	H. Klepper	8081A	2556
Aroclor 1254	18.56	ng/kg	2.222	0.0333	10		11/ 4/97	13:42	H. Klepper	8081A	2556
Aroclor 1260	ND	ng/kg	2.222	0.0333	10		11/ 4/97	13:42	H. Klepper	8081A	2556

\*GENERAL CHEMISTRY PARAMETERS\*

% Dry Weight	90	%			1		11/ 4/97	17:11	C. Gerenser	CLP	1768
Reactive Cyanide	ND	ng/kg	2.0	2.0	1		11/ 3/97	16:49	A. Hardison	SU-841	2178
Reactive Sulfide	60.0	ng/kg	20.0	20.0	1		11/ 3/97	16:49	A. Hardison	SU-841	2178
Phenolics	2.25	ng/kg	0.500	0.500	1		11/ 4/97	16:18	CHollingsw	9035	2761
Paint Filter Test	No Free liquids						11/ 4/97	13:30	D. Hoover	9995	1789
Chloride, s	96.1	ng/kg	5.0	1.0	1		11/ 4/97	14:34	CHollingsw	9036	1770
Flash Point, Open cup	NO FLASH TO 200F						11/ 5/97	16:02	D. Hoover	AS 12 5-5	1786
Asbestos	See attached sheet.						11/ 5/97	14:11	P. Lane		



SPECIALIZED ASSAYS, INC.

2960 Foster Creighton Dr.  
P.O. Box 40566  
Nashville, TN 37204-0566  
Phone 1-615-726-0177

ANALYTICAL REPORT

Laboratory Number: 97-A096723  
Sample ID: 970878

Page 2

ICLP Results

Analyte	Result	Units	Reg Limit	Matrix Spike		Date	Method
				Recovery (%)			
Arsenic	< 0.10	ng/l	5.0	101		11/11/97	6010E
Barium	1.80	ng/l	100	84		11/11/97	6010E
Cadmium	< 0.10	ng/l	1.0	94		11/11/97	6010E
Chromium	< 0.50	ng/l	5.0	91		11/11/97	6010E
Copper	< 0.50	ng/l	N/A	92		11/11/97	6010E
Lead	3.40	ng/l	5.0	94		11/11/97	6010E
Mercury	< 0.010	ng/l	0.20	101		11/11/97	7471
Nickel	< 0.50	ng/l	N/A	94		11/11/97	6010E
Selenium	< 0.10	ng/l	1.0	104		11/11/97	6010E
Silver	< 0.10	ng/l	5.0	93		11/11/97	6010E
Zinc	7.60	ng/l	N/A	90		11/11/97	6010E
Benzene	< 0.10	ng/l	0.5	112		11/ 3/97	8260
Carbon tetrachloride	< 0.1	ng/l	0.5	86		11/ 3/97	8260
Chlorobenzene	< 0.10	ng/l	100	106		11/ 3/97	8260
Chloroform	< 0.100	ng/l	6.0	114		11/ 3/97	8260
1,2-Dichloroethane	< 0.10	ng/l	0.5	106		11/ 3/97	8260
1,1-Dichloroethene	< 0.1	ng/l	0.7	110		11/ 3/97	8260
Methylethylketone	< 1.0	ng/l	200	118		11/ 3/97	8260
Tetrachloroethene	< 0.1	ng/l	0.7	100		11/ 3/97	8260
Trichloroethene	< 0.10	ng/l	0.5	126		11/ 3/97	8260
Vinyl Chloride	< 0.1	ng/l	0.2	122		11/ 3/97	8260
Cresols	< 0.1	ng/l	200	45		11/ 5/97	8270
1,4-Dichlorobenzene	< 0.1	ng/l	7.5	50		11/ 5/97	8270
2,4-Dinitrotoluene	< 0.10	ng/l	0.13	50		11/ 5/97	8270
Hexachlorobenzene	< 0.10	ng/l	0.13	40		11/ 5/97	8270
Hexachlor-1,3-butadien	< 0.1	ng/l	0.5	50		11/ 5/97	8270
Hexachlorocyclopentadiene	< 0.1	ng/l	3.0	65		11/ 5/97	8270
Nitrobenzene	< 0.1	ng/l	2.0	60		11/ 5/97	8270
Pentachlorophenol	< 0.1	ng/l	100	48		11/ 5/97	8270
Pyridine	< 0.1	ng/l	5.0	25		11/ 5/97	8270
2,4,5-Trichlorophenol	< 0.1	ng/l	400	25		11/ 5/97	8270
2,4,6-Trichlorophenol	< 0.1	ng/l	2.0	25		11/ 5/97	8270
ICLP Extraction	Completed					11/ 1/97	1311
Zero Headspace Extraction	Completed					11/ 1/97	1311

ND = Not detected at the report limit

Flash point/volatility reported to the nearest 10 deg F

Sample Extraction Data

PCB's Extracted 11/ 3/97 Wt extracted: 5.00 gm Extract Volume: 10.0 ml C.Gardwell



SPECIALIZED ASSAYS, INC.

2960 Foster Creighton Dr.  
P.O. Box 40566  
Nashville, TN 37204-0566  
Phone 1-615-726-0177

ANALYTICAL REPORT

Laboratory Number: 97-A096723  
Sample ID: 970878

Page 3

Surrogate	% Recovery	Target Range
VQA Surrogate, 1,2-Dichloroethane, d4	102	80. - 124.
VQA Surrogate, Toluene d8	102	86. - 108.
VQA Surrogate, 4-Bromofluorobenzene	99.0	77. - 118.
ONA Surrogate, Nitrobenzene-d5	50.0	35. - 115.
ONA Surrogate, 2-Fluorobiphenyl	45.0	43. - 116.
ONA Surrogate, Terphenyl d14	60.0	29. - 130.
ONA Surrogate, Phenol d5	40.0	10. - 110.
ONA Surrogate, 2-Fluorophenol	20.0	20. - 110.
ONA Surrogate, 2,4,6-Tribromophenol	30.0	10. - 123.
Pest/PCB Surrogate, TCMS	71.0	40. - 150.

All samples have been corrected for dry weight.

Acidity and Alkalinity cannot be performed on a solid matrix

Report Approved By: Michael H. Dunn Report Date: 11/11/97

Theodore J. Duella, Ph.D., O.A. Officer  
Michael H. Dunn, M.S., Technical Director  
Danny R. Hale, M.S., Laboratory Director

Laboratory Identification Number: 998020430



# Appendix G

## Drum Disposal Manifests

---



STATE OF WISCONSIN  
Chapter 144, Wis. Stats.  
Form 4400-86P

Rev. 3-97

State of Wisconsin  
Department of Natural Resources  
Bureau of Solid and Hazardous Waste Mgt.  
Box 8094  
Madison, Wisconsin 53708

FOR DNR USE ONLY

ALL COPIES MUST BE LEGIBLE,  
PLEASE TYPE

Form designed for use on elite (12-pitch) typewriter.

Form Approved. OMB No. 2050-0089. Expires 9-30

<b>UNIFORM HAZARDOUS WASTE MANIFEST</b>		1. Generator's US EPA ID No. WID 9 818 16 3 6 6 8 4	Manifest Document No. 0 7 0 0	2. Page 1 of 1	Information in the shaded area is not required by Federal law		
3. Generator's Name and Mailing Address WISC D.O.T.-AUTOWRECKER		WISC DOT/501, Airport Blvd P.O. BOX 7985 MADISON WI 53707		A. State Manifest Document Number WI J800668			
4. Generator's Phone (608) 581-4444				B. State Generator's ID			
5. Transporter 1 Company Name MID-WEST TRANSPORT INC		6. US EPA ID Number WIR 0 0 0 0 0 6 7 0 0		C. State Transporter's ID 390E			
7. Transporter 2 Company Name		8. US EPA ID Number		D. Transporter's Phone 14 253-8446			
9. Designated Facility Name and Site Address AETS CONTROLLED WASTE DIVISION W124 N9451 BOUNDARY RD. MENOMONEE FALLS, WI 53051		10. US EPA ID Number WID 0 0 3 9 6 7 1 4 8		E. State Transporter's ID			
				F. Transporter's Phone			
				G. State Facility's ID			
				H. Facility's Phone 03135			
				414 255-8655			
11. US DOT Description (Including Proper Shipping Name, Hazard Class, and ID Number)		12. Containers No.	Type	13. Total Quantity	14. Unit Wt/Vol	1. Waste No.	
HAZARDOUS WASTE, SOLID, n.o.s., (SOIL W/LEAD) 9, NA3077, III		001	CM	000.20		D008	
b.							
c.							
d.							
J. Additional Descriptions for Materials Listed Above A)001, 310785, CWDORDHAZ006 PC165 COD REQUIRED STATE WASTE		Weight: 66,620 Tare: 41,460		K. Handling Codes for Wastes Listed Above			
15. Special Handling Instructions and Additional Information  EMERGENCY PHONE 888 353-2387							
16. GENERATOR'S CERTIFICATION: I hereby declare that the contents of this consignment are fully and accurately described above by proper shipping name and are classified, packed, marked, and labeled, and are in all respects in proper condition for transport by highway according to applicable international and national governmental regulations and according to the requirements of the Wisconsin Department of Natural Resources. If I am a large quantity generator, I also certify that I have a program in place to reduce the volume and toxicity of waste generated to the degree I have determined to be economically practicable and I have selected the practicable method of treatment, storage, or disposal currently available to me which minimizes the present and future threat to human health and the environment;  OR, if I am a small quantity generator, I have made a good faith effort to minimize my waste generation and select the best waste management method that is available to me and that I can afford.							
Printed/Typed Name & Position Title CHRIS A. AKGULIAN ORO		Signature <i>Chris A. Akgulian</i>		Date 11/21/97			
17. TRANSPORTER 1 Acknowledgement of Receipt of Materials							
Printed/Typed Name & Position Title HOLLY J. LEWIS DRIVER		Signature <i>Holly J. Lewis</i>		Date 11/21/97			
18. TRANSPORTER 2 Acknowledgement of Receipt of Materials							
Printed/Typed Name & Position Title		Signature		Date			
19. Discrepancy Indication Space							
20. FACILITY OWNER OR OPERATOR: Certification of receipt of hazardous materials covered by this manifest except as noted in Item 19.							
Printed/Typed Name & Position Title		Signature		Date			

EPA Form 8700-22 (Rev. 9-88) Previous editions are obsolete.

Copy Distribution:

- 1 - Generator send to Wis. DNR
- 2 - Generator retain
- 3 - Facility send to Wis. DNR
- 4 - Facility retain
- 5 - Facility send to Gene
- 6 - Transporter retain

Emergency 24 Hour Assistance Telephone Number  
In Wisconsin (608) 266-8232  
Outside Wisconsin (800) 424-8802

COPY 1-

GENERATOR SEND TO WIS. DNR

Copies 1 & 3 mail to Wis. DNR at above address.





**STATE OF WISCONSIN**  
Chapter 144, Wis. Stats.  
Form 4400-66P Rev. 3-97

State of Wisconsin  
Department of Natural Resources  
Bureau of Solid and Hazardous Waste Mgt.  
Box 8094  
Madison, Wisconsin 53708

**FOR DNR USE ONLY**

**ALL COPIES MUST BE LEGIBLE,  
PLEASE TYPE**

Form designed for use on elite (12-pitch) typewriter.

Form Approved. OMB No. 2050-0089. Expires 9-3.

<b>UNIFORM HAZARDOUS WASTE MANIFEST</b>		1. Generator's US EPA ID No. W I D 9 8 8 6 3 6 6 8 4	Manifest Document No. 2,814,811	2. Page 1 of 1	Information in the shaded area is not required by Federal law	
3. Generator's Name and Mailing Address WISC D.O.T.-AUTOWRECKER		WISC.DOT/SOLID WASTE DIVISION P.O.BOX 7965 MADISON WI 53707		A. State Manifest Document Number WI J800667		
4. Generator's Phone (808) 581-4444				B. State Generator's ID		
5. Transporter 1 Company Name MID-WEST TRANSPORT INC		6. USEPA ID Number W I R 0 0 0 0 0 6 7 0 0		C. State Transporter's ID 390		
7. Transporter 2 Company Name		8. USEPA ID Number		D. Transporter's Phone 253-844		
9. Designated Facility Name and Site Address AETS CONTROLLED WASTE DIVISION W124 N9451 BOUNDARY RD. MENOMONEE FALLS, WI 53051		10. US EPA ID Number W I D 0 0 3 9 6 7 1 4 8		E. State Transporter's ID		
				F. Transporter's Phone		
				G. State Facility's ID 03135		
				H. Facility's Phone 414 255-8655		
11. US DOT Description (Including Proper Shipping Name, Hazard Class, and ID Number)		12. Containers No.	Type	13. Total Quantity	14. Unit w/vol	15. Waste No.
a. HAZARDOUS WASTE, SOLID, n.o.s., (SOIL W/LEAD) Q NA3077 III		001	CM	900204		D008
b.						
c.						
d.						
J. Additional Descriptions for Materials Listed Above A)001, 310785, CWDORDHAZ006 PC165 COD REQUIRED STATE WASTE		Weight: 57,160 TARS: 43,280		K. Handling Codes for Wastes Listed Above		
15. Special Handling Instructions and Additional Information  EMERGENCY PHONE 888 353-2387						
16. GENERATOR'S CERTIFICATION: I hereby declare that the contents of this consignment are fully and accurately described above by proper shipping name and are classified, packed, marked, and labeled, and are in all respects in proper condition for transport by highway according to applicable international and national governmental regulations and according to the requirements of the Wisconsin Department of Natural Resources. If I am a large quantity generator, I also certify that I have a program in place to reduce the volume and toxicity of waste generated to the degree I have determined to be economically practicable and I have selected the practicable method of treatment, storage, or disposal currently available to me which minimizes the present and future threat to human health and the environment;  OR, if I am a small quantity generator, I have made a good faith effort to minimize my waste generation and select the best waste management method that is available to me and that I can afford.						
Printed/Typed Name & Position Title CHRIS A AKGULIAN ORO		Signature <i>Chris A. Akgulian</i>		Date 11/21/97		
17. TRANSPORTER 1 Acknowledgement of Receipt of Materials						
Printed/Typed Name & Position Title SEAN PHILLIPS DRIVER		Signature <i>Sean Phillips</i>		Date 11/21/97		
18. TRANSPORTER 2 Acknowledgement of Receipt of Materials						
Printed/Typed Name & Position Title		Signature		Date		
19. Discrepancy Indication Space						
20. FACILITY OWNER OR OPERATOR: Certification of receipt of hazardous materials covered by this manifest except as noted in Item 19.						
Printed/Typed Name & Position Title		Signature		Date		

EPA Form 8700-22 (Rev. 9-88) Previous editions are obsolete.

Copy Distribution: 1 - Generator send to Wis. DNR  
2 - Generator retain  
3 - Facility send to Wis. DNR  
4 - Facility retain  
5 - Facility send to Gen  
6 - Transporter retain

Emergency 24 Hour Assistance Telephone Number  
In Wisconsin (808) 266-3232  
Outside Wisconsin (800) 424-8802  
COPY 1 - GENERATOR SEND TO WIS. DNR

Copies 1 & 3 mail to Wis. DNR at above address.



Please type or print in block letters. (Form designed for use on elite (12-pitch) typewriter.)

<b>SPECIAL WASTE MANIFEST TICKET</b>		1. Generator's US EPA ID No. W I D 9 8 0 6 3 6 6 8 4 2 8 4 8 3		Manifest Document No. 2 8 4 8 3		2. Page 1 of 1	
3. Generator's Name and Mailing Address WISC D.O.T. -AUTOWRECKER				WISC.DOT/BOE ATT. CHAR TEBEEST P.O. BOX 7985 MADISON WI 53707		A. Manifest Document Number Y 0009912	
4. Generator's Phone ( 608 )581-4444				6. US EPA ID Number		B. State Generator's ID	
5. Transporter 1 Company Name MID-WEST TRANSPORT INC.				6. US EPA ID Number W I R 0 0 0 0 0 6 7 0 0		C. State Trans. ID 3906	
7. Transporter 2 Company Name				8. US EPA ID Number		D. Transporter's Phone (414) 253-8446	
9. Designated Facility Name and Site Address <del>WISCONSIN CONTROLLED WASTE DIVISION</del> <del>W124 N9451 BOUNDARY RD.</del> <del>MENOMONEE FALLS, WI 53051</del>				10. US EPA ID Number <del>W I D 9 8 0 6 3 6 6 8 4 2 8 4 8 3</del>		E. State Trans. ID	
11. US DOT Description (Including Proper Shipping Name, Hazard Class, and ID Number) HM a. NON-REGULATED BY DOT, NOS (SOIL) DOT NON-REGULATED, NONE				12. Containers No. Type		13. Total Quantity	
				001 CM		00020 Y	
						14. Unit Wt/Vol	
						L Waste No. NONE	
J. Additional Descriptions for Materials Listed Above 001, 316786, CWDORC310786 PC185 COD REQUIRED STATE WASTE				K. Handling Codes for Wastes Listed Above Weight - 43020 Gross			
15. Special Handling Instructions and Additional Information EMERGENCY PHONE 888 353-2387 Box # 9206332							
16. GENERATOR'S CERTIFICATION: I hereby declare that the contents of this consignment are fully and accurately described above by proper shipping name and are classified, packed, marked, and labeled, and are in all respects in proper condition for transport by highway according to applicable international and national government regulations.							
CHRIS A. AKGULIAN OBO				Signature <i>Chris A. Akgulian</i>		1 1 2 5 9	
Printed/Typed Name Chris A. Akgulian OBO				Signature <i>Chris A. Akgulian</i>		Month Day 11/25/97	
17. Transporter 1 Acknowledgement of Receipt of Materials				Signature <i>Gene Phillips</i>		1 1 2 5 9	
Printed/Typed Name GENE PHILLIPS				Signature <i>Gene Phillips</i>		Month Day 11/25/97	
18. Transporter 2 Acknowledgement of Receipt of Materials				Signature		Month Day	
Printed/Typed Name				Signature		Month Day	
19. Discrepancy Indication Space							
20. Facility Owner or Operator: Certification of receipt of materials covered by this manifest except as noted in item 19.							
Printed/Typed Name				Signature		Month Day	

1-GENERATOR COPY

SIGNATURE AND INFORMATION MUST BE LEGIBLE ON ALL COPIES