

Gutknecht, Lisa A - DNR

From: Robbennolt, Rebecca <Rebecca.Robbennolt@arcadis-us.com>
Sent: Wednesday, September 19, 2012 2:47 PM
To: Gutknecht, Lisa A - DNR
Cc: jjpettinelli@mmm.com; mdupey@mmm.com; Trask (Cota), Jennine
Subject: 3M Parking Lot Inspection Summary
Attachments: 2012 Parking Lot CMP Submittal Documents.pdf

Lisa, good afternoon. Please find the attached cap maintenance documentation for the 3M Downtown Parking Lot. Per your letter received 7/26/2012, we are submitting the cap inspection documentation form, the parking lot repair documentation, and a revised Cap Maintenance Plan to reflect the railroad expansion in accordance with the continuing obligations required with site closure.

Please advise with any questions or concerns.

Have a great afternoon,
Rebecca

Rebecca Robbennolt | Remediation Specialist | rebecca.robbennolt@arcadis-us.com
ARCADIS U.S., Inc. | 126 N. Jefferson St., Suite 400 | Milwaukee, WI 53202
T. 414.277-6208 | F. 414.276.7603
ARCADIS, Imagine the result
Please consider the environment before printing this email.

NOTICE: This e-mail and any files transmitted with it are the property of ARCADIS U.S., Inc. and its affiliates. All rights, including without limitation copyright, are reserved. The proprietary information contained in this e-mail message, and any files transmitted with it, is intended for the use of the recipient(s) named above. If the reader of this e-mail is not the intended recipient, you are hereby notified that you have received this e-mail in error and that any review, distribution or copying of this e-mail or any files transmitted with it is strictly prohibited. If you have received this e-mail in error, please notify the sender immediately and delete the original message and any files transmitted. The unauthorized use of this e-mail or any files transmitted with it is prohibited and disclaimed by ARCADIS U.S., Inc. and its affiliates. Nothing herein is intended to constitute the offering or performance of services where otherwise restricted by law.



Infrastructure, environment, buildings

ARCADIS G&M, Inc.
126 N. Jefferson Street
Suite 400
Milwaukee
Wisconsin 53202
Tel 414 276 7742
Fax 414 276 7603

TRANSMITTAL LETTER

To:
Lisa Gutknecht
Wisconsin Department of Natural Resources
5301 Rib Mountain Drive
Wausau, WI 54401

Copies:

ENVIRONMENT

From:
Jennine Cota Trask

Date:
18 September 2012

Subject:
3M Wausau Parking Lot Cap Maintenance

ARCADIS Project No.:
WI001136.0004

We are sending you:

[X] Attached

[] Under Separate Cover Via _____ the Following Items:

[] Shop Drawings

[] Plans

[] Specifications

[] Change Order

[] Prints

[] Samples

[] Copy of Letter

[] Reports

[X] Other: Annual Cap Inspection Form; Repair Documentation; and Deed Restriction and Cap Maintenance Plan with Revised Exhibit 2 (Site Layout)

Table with 6 columns: Copies, Date, Drawing No., Rev., Description, Action*. Contains 3 rows of document details.

Action*

[] A Approved

[] CR Correct and Resubmit

[] Resubmit _____ Copies

[] AN Approved As Noted

[X] F File

[] Return _____ Copies

[] AS As Requested

[] FA For Approval

[] Review and Comment

[] Other:

Mailing Method

[X] U.S. Postal Service 1st Class

[] Courier/Hand Delivery

[] FedEx Priority Overnight

[] FedEx 2-Day Delivery

[] Certified/Registered Mail

[] United Parcel Service (UPS)

[] FedEx Standard Overnight

[] FedEx Economy

[] Other:

Comments: Lisa, please find the enclosed cap inspection documentation referenced in the Continuing Obligations Audit, 3M Downtown Parking Lot, letter dated July 26, 2012. A revised figure has been added to the deed restriction and cap maintenance plan for the 3M Parking Lot to incorporate the railroad track expansion completed in 2008. 3M will continue annual inspections with photo documentation of the Parking Lot cap moving forward. Please call with any questions or concerns, 414.277.6203. Thank you, Jennine Trask

Attachment 1. Barrier Inspection and Maintenance Log, 3M Parking Lot, Wausau, Wisconsin.

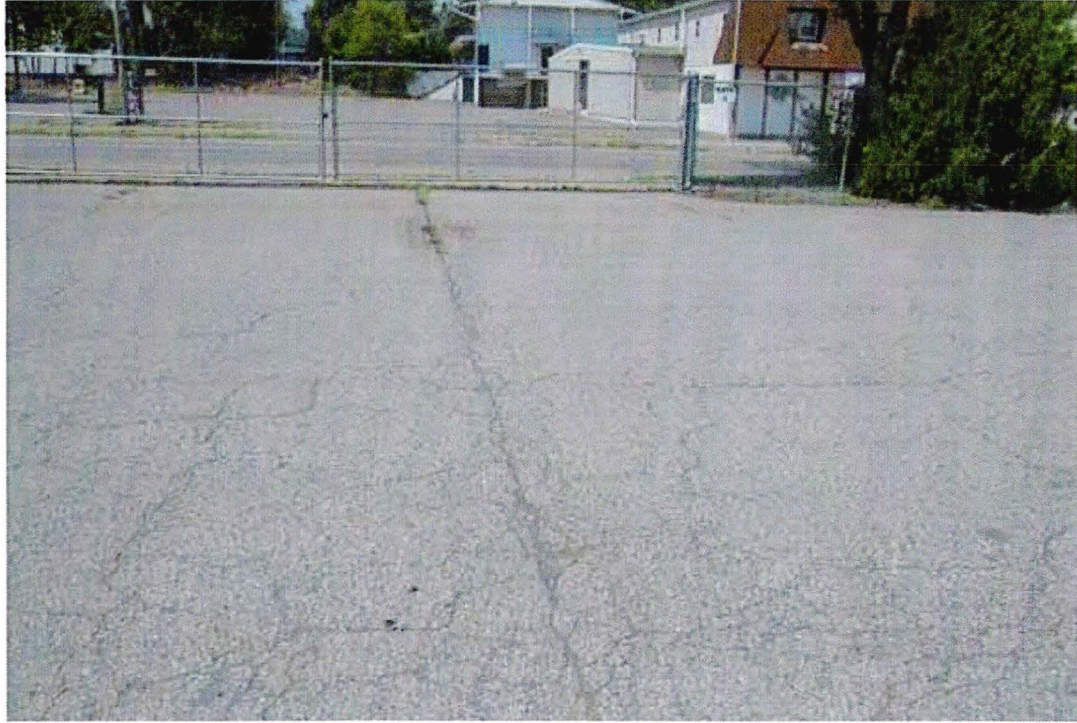
Date	Inspector	Condition of Cap (Excellent, Good, Fair, Poor)	Recommendations	Required Repairs	Has recommended maintenance from the previous inspection been implemented?
7/24/12	Michelle Dupuy	Poor - North Good/Excellent - South	Northern portion need repairs either crack filling or resphalt	Many cracks - large need to be filled or area to be resphalted	N/A
	Pictures Taken		① IMG_1552.JPG - South End		
			② IMG_1553.JPG - South End		
			③ IMG_1554.JPG - Central/Southern Area		
			④ IMG_1555.JPG - Central/Northern area		
			⑤ IMG_1560.JPG - North End		



PHOTOGRAPH 1: July 24, 2012 - IMG-1552.



PHOTOGRAPH 2: July 24, 2012 - IMG-1553.



PHOTOGRAPH 3: July 24, 2012 - IMG-1554.



PHOTOGRAPH 4: July 24, 2012 - IMG-1555.



PHOTOGRAPH 5: July 24, 2012 - IMG-1560.

Attachment 1. Barrier Inspection and Maintenance Log, 3M Parking Lot, Wausau, Wisconsin.

Date	Inspector	Condition of Cap (Excellent, Good, Fair, Poor)	Recommendations	Required Repairs	Has recommended maintenance from the previous inspection been implemented?
9/14	Michelle Dupey	Excellent	None	None	Y Reasphalting Yes - on the cap was complete 9/13/12
	Pictures taken	①	IMG_1632	New asphalt cap	
		②	IMG_1633		



PHOTOGRAPH 1: September 14, 2012 - IMG-1632.



PHOTOGRAPH 2: September 14, 2012 - IMG-1633.