



March 17, 2014

Project LC-07-04279A

Ms. Melissa Erdman, Town Clerk  
Town of Onalaska  
Town Hall  
7052 Second Street  
Onalaska, WI 54650

**RECEIVED**  
**MAR 19 2014**  
**DNR-WCR**

Re: March 2014 Onalaska Landfill Gas Monitoring  
Onalaska Municipal Landfill Site  
Onalaska, Wisconsin

Dear Ms. Erdman:

Braun Intertec Corporation (Braun Intertec) is presenting gas-monitoring data for the referenced site. The landfill gas monitoring is based on requirements of item number 18 of the Consent Decree with the United States Environmental Protection Agency (USEPA). Item number 18 states that the "settling Defendant shall take explosimeter and oxygen readings at all landfill gas monitoring wells on a quarterly basis according to procedures to be established by USEPA and Wisconsin Department of Natural Resources (WDNR), unless approval is obtained from the USEPA in consultation with WDNR to perform such readings on a less frequent basis." Mr. Larry Lester of the WDNR—South Central Region Headquarters, provided the Consent Decree information to Braun Intertec.

On March 14, 2014, Braun Intertec personnel collected oxygen and explosimeter (LEL) readings at seven landfill gas monitoring wells, identified on the landfill gas piping map, for the Onalaska municipal landfill site as LG-1 through LG-7. March oxygen level reading at gas monitoring points LG-3 and LG-6 were lower than the previous gas monitoring. The oxygen level readings at gas monitoring points LG-1, LG-2, LG-4, LG-5 and LG-7 were higher than the previous gas monitoring. Figure 1 depicts the oxygen level readings versus time. The March LEL readings at gas monitoring points LG-1 through LG-7 remained the same as the previous gas monitoring. Figure 2 depicts the LEL readings versus time. Tables 1A and 1B provide a historical summary of oxygen and LEL readings. The LEL and oxygen field readings, along with site observations, are provided on Table 2.

If you have any questions or comments regarding this project, please call David Bradshaw at 608.781.7277.

Sincerely,

BRAUN INTERTEC CORPORATION

A handwritten signature in cursive script that reads "David M. Bradshaw".

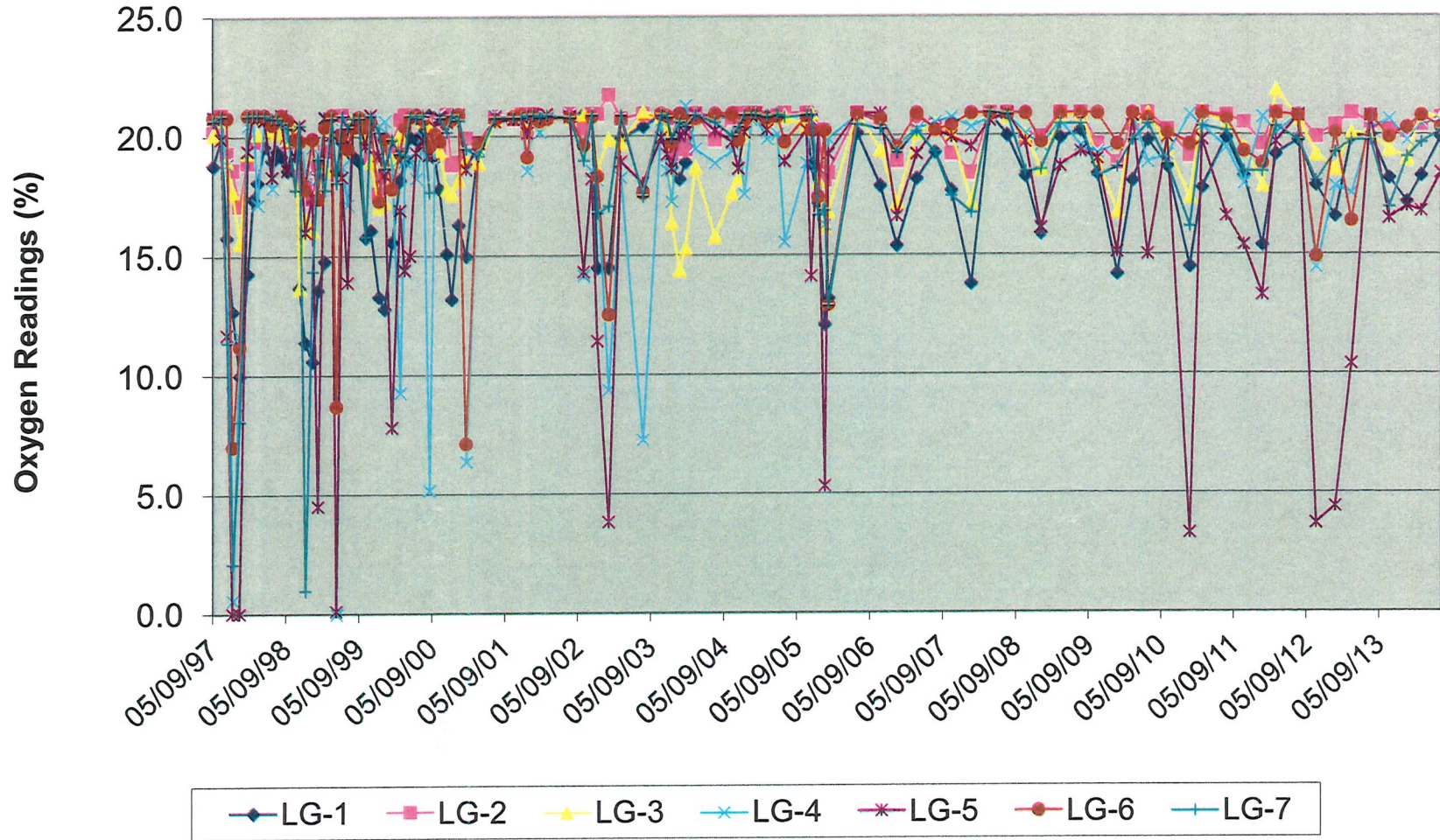
David M. Bradshaw  
Environmental Field Technician

**Attachments:**

- Figure 1 - Oxygen Level Trends
- Figure 2 - LEL Concentration Trends
- Table 1A - Landfill Oxygen Monitoring Results
- Table 1B - Landfill LEL Monitoring Results
- Table 2 - Site Visit Sheet

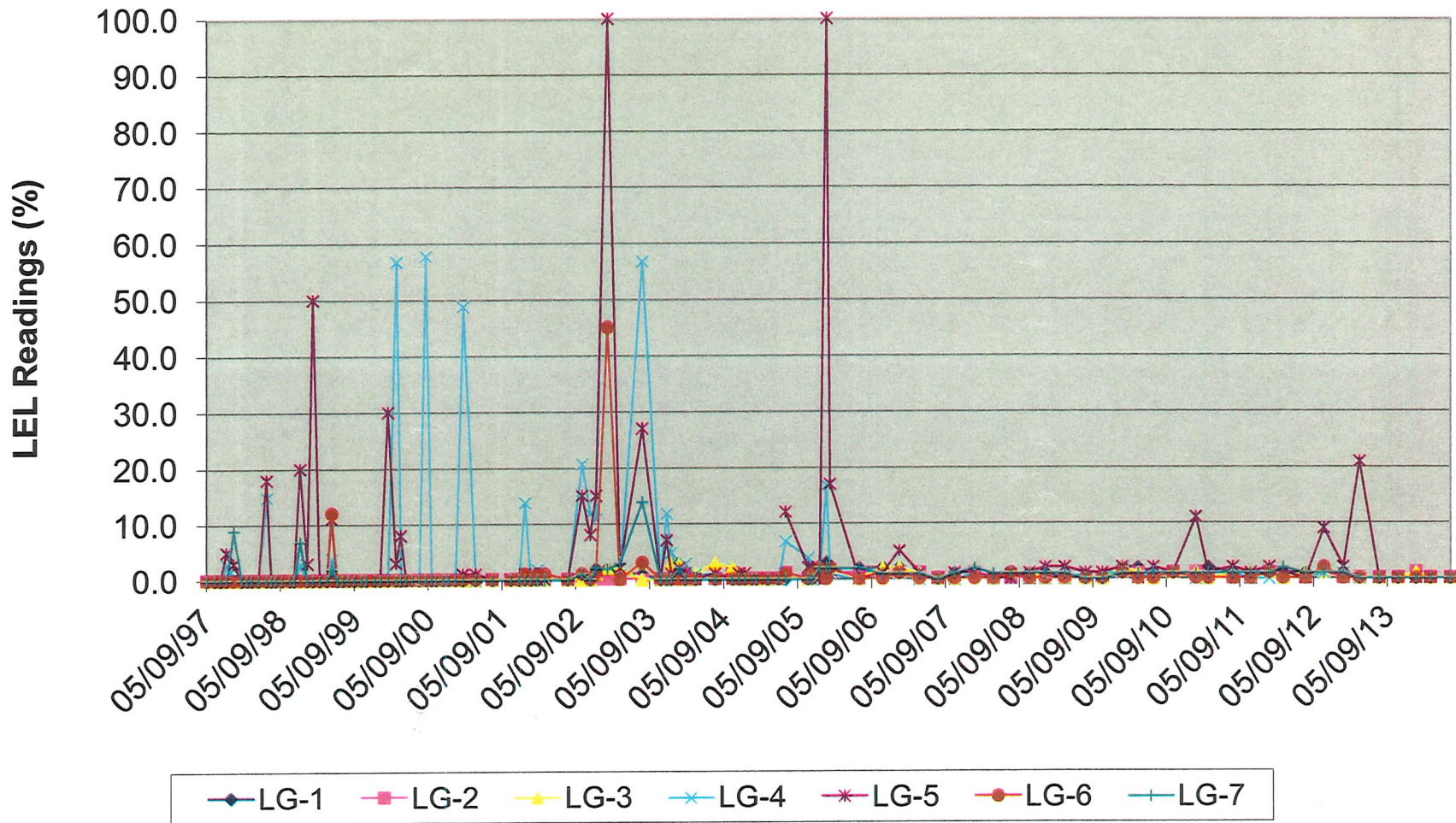


# Oxygen Levels





### LEL Levels



**Onalaska Municipal Landfill  
LC-07-04279**

**TABLE 1A  
Landfill Gas Monitoring**

Site Visit Date	Oxygen Readings (%) Gas Monitoring Points						
	LG-1	LG-2	LG-3	LG-4	LG-5	LG-6	LG-7
05/09/97	18.8	20.2	20.1	20.9	20.8	20.8	20.7
06/18/97	19.9	20.9	20.7	20.7	19.9	20.9	20.9
07/16/97	15.8	19.3	19.0	18.9	11.7	20.8	11.4
08/14/97	12.7	18.6	17.7	0.6	0.0	7.0	2.1
09/18/97	10.0	17.1	15.6	11.7	0.0	11.2	8.1
10/28/97	14.3	18.9	19.3	20.5	19.4	20.9	20.9
11/24/97	17.4			20.9	20.9	20.9	20.9
12/16/97	18.1	19.8	20.1	17.2	20.8	20.9	20.9
01/19/98	19.6			20.8	20.7	20.9	20.9
02/27/98	19.0	20.6	20.3	17.9	18.3	20.5	20.8
03/23/98	19.4	20.5	20.2	20.6	20.7	20.7	20.8
04/14/98	19.2	20.3	20.5	20.9	20.9	20.9	20.6
05/15/98	18.6	19.8	19.9	19.9	18.6	20.7	20.4
06/23/98	20.2	20.3	20.4	19.9	19.2	19.9	17.8
07/14/98	13.7	18.4	13.7	20.5	20.5	19.8	20.5
08/12/98	11.4	18.0	16.6	18.4	16.0	17.8	1.0
09/17/98	10.6	17.4	16.1	19.6	17.5	19.9	14.4
10/14/98	13.6	18.7	17.7	18.3	4.5	17.4	19.1
11/17/98	14.8	19.4	18.7	20.9	20.8	20.4	17.8
12/23/98				20.8	20.1	20.9	20.8
01/15/99	18.6			0.0	0.1	8.7	18.1
02/12/99	19.8	20.9		18.8	18.3	20.1	20.9
03/12/99	19.6	20.5		17.2	13.9	19.5	20.4
04/09/99	19.2	20.5	20.8	20.7	20.7	20.4	20.8
05/07/99	19.0	20.4	20.5	20.8	20.7	20.8	20.8
06/10/99	15.8	19.8	20.1	20.2	19.6	20.4	15.8
07/06/99	16.1	19.1	19.0	20.9	20.9	20.6	20.9
08/16/99	13.3	17.6	17.1	20.5	19.2	17.3	20.2
09/13/99	12.8	18.3	17.3	20.7	18.4	19.9	18.7
10/20/99	15.6	19.6	19.0	18.8	7.8	17.8	19.9
11/30/99	18.2	20.7	20.1	9.3	16.9	19.3	19.3
12/23/99	19.0	20.9		19.0	14.4	20.4	19.2
01/18/00	20.0			19.2	15.0	20.8	20.9
02/18/00	19.9			18.3	19.3	20.9	20.8
03/24/00	20.2	20.7	20.7	20.0	19.8	20.7	20.9
04/24/00	20.9	20.7	20.5	5.2	19.2	19.6	17.7
05/23/00	19.1	20.7	20.3	20.4	20.4	20.1	
06/15/00	17.8	19.5	19.4	20.9	20.8	19.8	20.8
07/21/00	15.1	20.9	17.8	20.8	20.6	20.7	20.2
08/15/00	13.2	18.8	17.6	20.7	20.8	20.7	20.9
09/19/00	16.3	18.9	18.2	20.9	20.9	20.9	20.7
10/26/00	15.0	19.9	19.0	6.4	18.6	7.1	19.5
12/28/00	19.7	19.7	18.9	19.5	19.7	19.7	19.2
03/20/01	20.8	20.8	20.7	20.9	20.6	20.7	20.8
06/20/01	20.7	20.7	20.9	20.8	20.7	20.8	20.8
07/30/01	20.8	20.9	20.9	20.8	20.8	20.9	20.8
08/28/01	20.9	20.2	20.5	18.6	20.1	19.1	20.9
09/26/01	20.8	20.9	20.8	20.8	20.9	20.9	20.9
10/29/01	20.9	20.7	20.7	20.2	20.7	20.6	20.8
12/04/01	20.8	20.8	20.9	20.8	20.9	20.7	20.9
03/29/02	20.9	20.9	20.8	20.9	20.8	20.8	20.8

**Onalaska Municipal Landfill  
LC-07-04279**

**TABLE 1A  
Landfill Gas Monitoring**

Site Visit Date	Oxygen Readings (%) Gas Monitoring Points						
	LG-1	LG-2	LG-3	LG-4	LG-5	LG-6	LG-7
06/07/02	20.9	20.3	20.9	14.2	14.3	19.6	19.0
07/18/02	20.9	20.9	20.9	18.6	18.2	20.8	20.9
08/15/02	14.5	20.9	18.6	18.2	11.4	18.3	16.8
10/10/02	14.5	21.7	19.9	9.4	3.8	12.5	17.1
12/11/02	19.9	20.7	19.7	18.3	18.9	20.7	20.9
03/31/03	20.4	20.9	21.0	7.3	18.0	17.6	17.5
06/30/03	20.9	20.8	20.8	20.7	19.9	20.9	20.9
07/30/03	20.8	20.7	20.3	18.6	19.2	20.8	20.8
08/21/03	18.7	19.2	16.4	17.3	18.6	19.7	19.9
09/30/03	18.2	19.6	14.4	20.9	20.0	20.9	20.6
10/30/03	18.9	19.4	15.3	21.3	20.1	20.6	20.4
12/18/03	20.9	20.9	18.7	19.5	20.9	20.7	20.9
03/25/04	20.8	19.8	15.8	18.9	20.2	20.9	20.6
06/18/04	20.8	20.7	17.6	19.4	19.7	20.9	20.0
07/20/04	20.9	20.9	18.2	20.1	18.6	19.8	20.4
08/19/04	20.9	20.8	20.1	17.6	20.1	20.6	20.9
09/23/04	20.9	20.9	20.8	20.7	20.8	20.9	20.9
10/15/04	20.9	20.9	20.9	20.8	20.9	20.9	20.9
12/10/04	20.8	20.7	20.6	19.9	20.2	20.7	20.8
01/31/05	20.9	20.8		20.1		20.8	20.9
03/08/05	20.9	20.9	20.8	15.6	18.9	19.7	20.8
06/27/05	20.9	20.9	20.4	18.9	20.2	20.8	20.9
07/19/05	18.8	20.7	20.9	20.7	14.1	20.2	20.9
08/23/05	17.2	20.2	18.1	18.7	20.1	17.4	16.7
09/26/05	12.1	18.1	16.2	16.3	5.3	20.2	16.9
10/13/05	13.2	18.4	16.8	19.9	19.2	12.9	12.9
03/06/06	20.1	20.9	20.9	20.9	20.9	20.9	20.5
06/30/06	17.9	20.5	19.4	20.9	20.9	20.7	20.3
09/21/06	15.4	18.9	17.2	19.6	16.6	19.5	19.3
12/29/06	18.2	20.6	20.1	20.3	19.2	20.9	20.2
03/31/07	19.3	20.4	20.5	20.6	20.2	20.2	19.3
06/21/07	17.7	19.2	20.1	20.8	19.9	20.4	17.5
09/28/07	13.8	18.4	17.2	20.4	19.5	20.9	16.8
12/31/07	20.9	20.9	21.0	20.8	20.6	20.9	21.0
03/26/08	20.0	20.9	20.8	20.9	20.9	20.9	20.9
06/26/08	18.3	19.8	20.0	20.1	19.7	20.9	18.5
09/12/08	15.9	19.9	18.6	19.6	16.1	19.7	18.6
12/18/08	19.9	20.9	20.8	20.6	18.7	20.9	20.5
03/31/09	20.2	20.9	20.9	19.6	19.3	20.9	20.5
06/23/09	18.4	19.6	19.0	19.3	19.0	20.9	18.3
09/30/09	14.2	18.8	16.8	19.6	15.1	19.6	18.7
12/17/09	18.1	20.4	20.7	20.9	20.8	20.9	19.8
03/03/10	19.8	20.9	20.9	18.9	15	20.7	20.5
06/09/10	18.7	20.2	19.5	19.2	19.9	20.1	18.8
09/30/10	14.5	19.1	17.4	20.9	3.3	19.6	16.2
12/01/10	17.8	20.9	21.0	20.4	19.8	20.9	20.4
04/02/11	19.9	20.8	20.5	19.5	16.6	20.7	20.2



**Onalaska Municipal Landfill  
LC-07-04279**

**TABLE 1B  
Landfill Gas Monitoring**

Site Visit Date	LEL Readings (%) Gas Monitoring Points						
	LG-1	LG-2	LG-3	LG-4	LG-5	LG-6	LG-7
05/09/97	0.0	0.0	0.0	0.0	0.0	0.0	0.0
06/18/97	0.0	0.0	0.0	0.0	0.0	0.0	0.0
07/16/97	0.0	0.0	0.0	0.0	0.0	0.0	0.0
08/14/97	0.0	0.0	0.0	3.0	5.0	0.0	0.0
09/18/97	0.0	0.0	0.0	1.0	3.0	0.0	9.0
10/28/97	0.0	0.0	0.0	0.0	0.0	0.0	0.0
11/24/97	0.0			0.0	0.0	0.0	0.0
12/16/97	0.0	0.0	0.0	0.0	0.0	0.0	0.0
01/19/98	0.0			0.0	0.0	0.0	0.0
02/27/98	0.0	0.0	0.0	15.0	18.0	0.0	0.0
03/23/98	0.0	0.0	0.0	0.0	0.0	0.0	0.0
04/14/98	0.0	0.0	0.0	0.0	0.0	0.0	0.0
05/15/98	0.0	0.0	0.0	0.0	0.0	0.0	0.0
06/23/98	0.0	0.0	0.0	0.0	0.0	0.0	0.0
07/14/98	0.0	0.0	0.0	0.0	0.0	0.0	0.0
08/12/98	0.0	0.0	0.0	3.0	20.0	0.0	7.0
09/17/98	0.0	0.0	0.0	0.0	3.0	0.0	0.0
10/14/98	0.0	0.0	0.0	0.0	50.0	0.0	0.0
11/17/98	0.0	0.0	0.0	0.0	0.0	0.0	0.0
12/23/98				0.0	0.0	0.0	0.0
01/15/99	0.0			4.0	11.0	12.0	2.0
02/12/99	0.0	0.0		0.0	0.0	0.0	0.0
03/12/99	0.0	0.0		0.0	0.0	0.0	0.0
04/09/99	0.0	0.0	0.0	0.0	0.0	0.0	0.0
05/07/99	0.0	0.0	0.0	0.0	0.0	0.0	0.0
06/10/99	0.0	0.0	0.0	0.0	0.0	0.0	0.0
07/06/99	0.0	0.0	0.0	0.0	0.0	0.0	0.0
08/16/99	0.0	0.0	0.0	0.0	0.0	0.0	0.0
09/13/99	0.0	0.0	0.0	0.0	0.0	0.0	0.0
10/20/99	0.0	0.0	0.0	0.0	30.0	0.0	0.0
11/30/99	0.0	0.0	0.0	57.0	3.0	0.0	0.0
12/23/99	0.0	0.0		0.0	8.0	0.0	0.0
01/18/00	0.0			0.0	0.0	0.0	0.0
02/18/00	0.0			0.0	0.0	0.0	0.0
03/24/00	0.0	0.0	0.0	0.0	0.0	0.0	0.0
04/24/00	0.0	0.0	0.0	58.0	0.0	0.0	0.0
05/23/00	0.0	0.0	0.0	0.0	0.0	0.0	0.0
06/15/00	0.0	0.0	0.0	0.0	0.0	0.0	0.0
07/21/00	0.0	0.0	0.0	0.0	0.0	0.0	0.0
08/15/00	0.0	0.0	0.0	0.0	0.0	0.0	0.0
09/19/00	0.0	0.0	0.0	0.0	0.0	0.0	0.0
10/26/00	0.0	0.0	0.0	49	1.0	0.0	0.0
12/28/00	0.0	0.0	0.0	0.0	1.0	0.0	0.0
03/20/01	0.0	0.0	0.0	0.0	0.0	0.0	0.0
06/20/01	0.0	0.0	0.0	0.0	0.0	0.0	0.0
07/30/01	0.0	0.0	0.0	0.0	0.0	0.0	0.0
08/28/01	0.0	0.0	0.0	14.0	1.0	1.0	0.0
09/26/01	0.0	0.0	0.0	0.0	0.0	0.0	0.0
10/29/01	0.0	0.0	0.0	2.0	0.0	1.0	0.0
12/04/01	0.0	0.0	0.0	0.0	0.0	1.0	0.0
03/29/02	0.0	0.0	0.0	0.0	0.0	0.0	0.0



**Onalaska Municipal Landfill  
LC-07-04279**

**TABLE 1B  
Landfill Gas Monitoring**

Site Visit Date	LEL Readings (%) Gas Monitoring Points						
	LG-1	LG-2	LG-3	LG-4	LG-5	LG-6	LG-7
06/07/02	0.0	0.0	0.0	21.0	15.0	1.0	1.0
07/18/02	0.0	0.0	0.0	12.0	8.0	0.0	0.0
08/15/02	2.0	0.0	1.0	11.0	15.0	1.0	2.0
10/10/02	2.0	0.0	2.0	100.0	100.0	45.0	2.0
12/11/02	1.0	0.0	2.0	1.0	2.0	0.0	3.0
03/31/03	1.0	0.0	0.0	57.0	27.0	3.0	14.0
06/30/03	0.0	0.0	0.0	0.0	0.1	0.0	0.0
07/30/03	0.0	0.0	0.0	12.0	7.0	0.0	0.0
08/21/03	0.0	0.0	3.0	5.0	1.0	0.0	0.0
09/30/03	3.0	2.0	3.0	0.0	2.0	0.0	2.0
10/30/03	0.0	1.0	0.0	3.0	1.0	0.0	0.0
12/18/03	0.0	0.0	1.0	1.0	0.0	0.0	0.0
03/25/04	0.0	0.0	3.0	1.0	1.0	0.0	0.0
06/18/04	0.0	1.0	2.0	0.0	0.0	0.0	0.0
07/20/04	0.0	0.0	1.0	1.0	1.0	0.0	0.0
08/19/04	0.0	0.0	1.0	0.0	1.0	0.0	0.0
09/23/04	0.0	0.0	0.0	0.0	0.0	0.0	0.0
10/15/04	0.0	0.0	0.0	0.0	0.0	0.0	0.0
12/10/04	0.0	0.0	0.0	0.0	0.0	0.0	0.0
01/31/05	0.0	0.0		0.0		0.0	0.0
03/08/05	0.0	1.0	1.0	7.0	12.0	1.0	0.0
06/27/05	0.0	0.0	0.0	4.0	2.0	0.0	0.0
07/19/05	2.0	0.0	0.0	0.0	2.0	1.0	0.0
08/23/05	2.0	0.0	1.0	1.0	0.0	2.0	2.0
09/26/05	3.0	1.0	2.0	17.0	100.0	0.0	2.0
10/13/05	2.0	1.0	2.0	1.0	17.0	2.0	2.0
03/06/06	2.0	1.0	0.0	0.0	0.0	0.0	2.0
06/30/06	2.0	1.0	2.0	1.0	1.0	0.0	1.0
09/21/06	2.0	1.0	2.0	1.0	5.0	1.0	1.0
12/29/06	1.0	1.0	1.0	0.0	1.0	0.0	1.0
03/31/07	0.0	0.0	0.0	0.0	0.0	0.0	0.0
06/21/07	1.0	0.0	0.0	0.0	1.0	0.0	1.0
09/28/07	1.0	1.0	1.0	1.0	1.0	0.0	2.0
12/31/07	0.0	0.0	0.0	0.0	0.0	0.0	1.0
03/26/08	1.0	0.0	1.0	1.0	0.0	1.0	1.0
06/26/08	1.0	0.0	1.0	0.0	1.0	0.0	1.0
09/12/08	1.0	0.0	0.0	0.0	2.0	0.0	1.0
12/18/08	0.0	0.0	0.0	0.0	2.0	0.0	1.0
03/31/09	0.0	0.0	0.0	1.0	1.0	0.0	0.0
06/23/09	0.0	0.0	0.0	1.0	1.0	0.0	0.0
09/30/09	2.0	1.0	2.0	1.0	2.0	1.0	1.0
12/17/09	2.0	1.0	1.0	0.0	0.0	0.0	1.0
03/03/10	1.0	0.0	0.0	1.0	2.0	0.0	1.0
06/09/10	1.0	1.0	1.0	1.0	1.0	1.0	1.0
09/30/10	1.0	1.0	1.0	0.0	11.0	0.0	1.0
12/01/10	2.0	0.0	0.0	1.0	1.0	0.0	1.0
4/2/2011	1.0	0.0	1.0	1.0	2.0	0.0	1.0

**Onalaska Municipal Landfill  
LC-07-04279**

**TABLE 1B  
Landfill Gas Monitoring**

LEL Readings (%)

Site Visit Date	Gas Monitoring Points						
	LG-1	LG-2	LG-3	LG-4	LG-5	LG-6	LG-7
06/29/11	0.0	0.0	1.0	0.0	1.0	0.0	1.0
09/30/11	1.0	1.0	1.0	0.0	2.0	1.0	1.0
12/07/11	1.0	0.0	0.0	1.0	1.0	0.0	2.0
03/28/12	1.0	0.0	1.0	0.0	0.0	0.0	1.0
06/26/12	1.0	1.0	1.0	1.0	9.0	2.0	1.0
09/30/12	1.0	0.0	1.0	1.0	2.0	0.0	1.0
12/20/12	0.0	0.0	0.0	0.0	21.0	0.0	0.0
03/27/13	0.0	0.0	0.0	0.0	0.0	0.0	0.0
06/28/13	0.0	0.0	0.0	0.0	0.0	0.0	0.0
09/25/13	1.0	1.0	1.0	0.0	0.0	0.0	0.0
12/05/13	0.0	0.0	0.0	0.0	0.0	0.0	0.0
03/14/14	0.0	0.0	0.0	0.0	0.0	0.0	0.0

Landfill Gas Monitoring  
LC-07-04279A  
Town of Onalaska

Date: 3-14-14  
Technician: David Bradshaw  
Weather: Sunny, windy, 30

Well Number	Time Monitored	Oxygen Readings	LEL Readings	Coments
LG-1	10:50	19.9	0.0	
LG-2	11:03	20.7	0.0	
LG-3	11:10	20.7	0.0	
LG-4	11:22	20.6	0.0	
LG-5	11:34	18.4	0.0	
LG-6	11:45	20.3	0.0	
LG-7	11:55	20.2	0.0	

Additional Notes

---

---

---

---

---