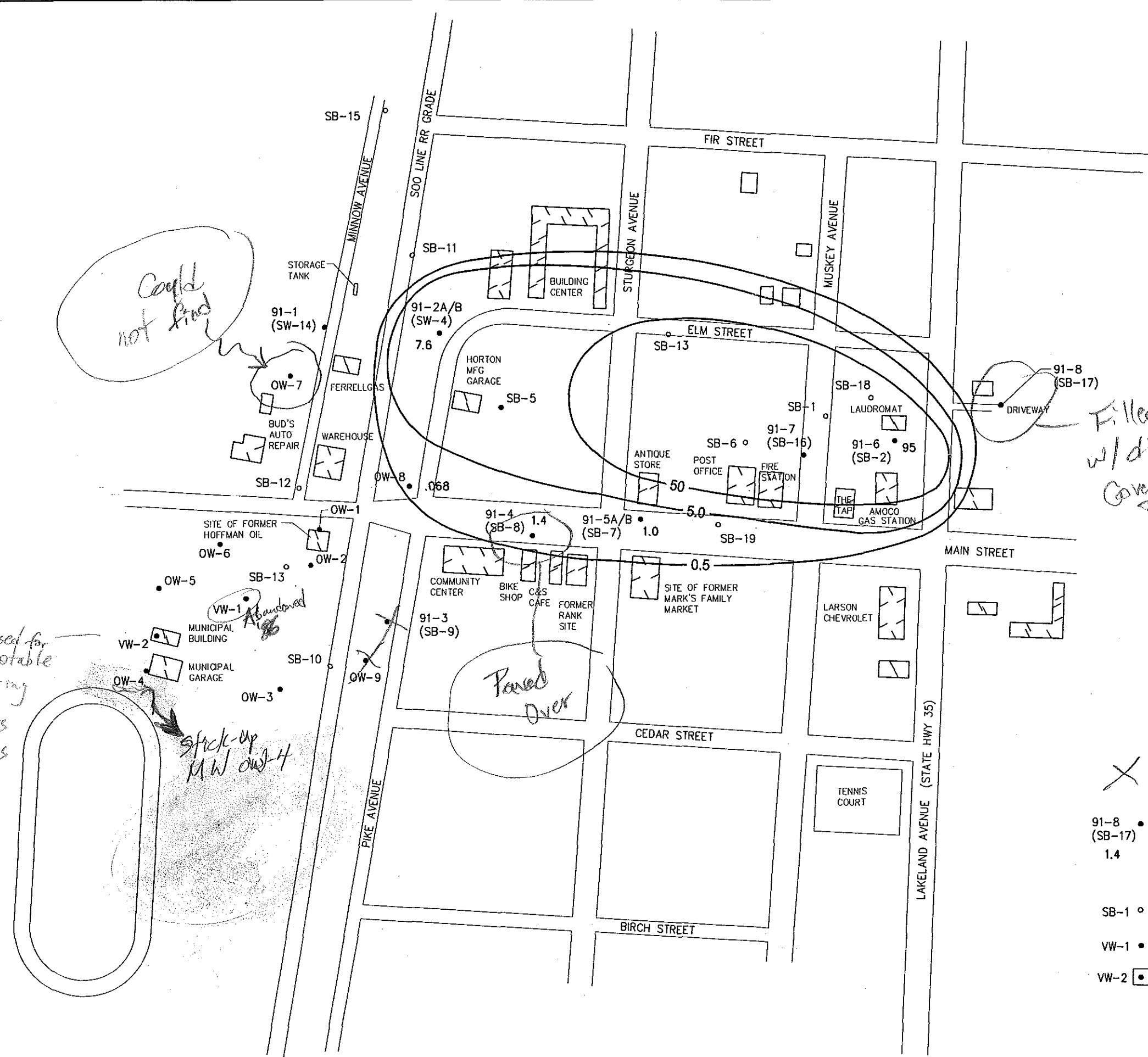


i:\Clients\W0950\W0950 WDNR\21 Webster GW Monitoring\dwg\W021base.dwg 9/16/2004 11:54:35 AM CDT



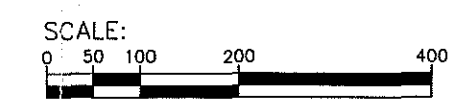
*Filled-in w/ dirt/gravel
Cover missing
PVC changed*

Paved Over

used for non-potable watering of Sports Fields

stick-up M.W. OW-4

Abandoned



- X - abandoned MW*
- LEGEND**
- 91-8 • LOCATION OF MONITORING WELL AND SOIL BORING WITH TETRACHLOROETHYLENE ISOCONCENTRATION IN ppb
 - 1.4
 - SB-1 ◦ LOCATION OF SOIL BORING ONLY
 - VW-1 • LOCATION OF VILLAGE WELL 1
 - VW-2 ◻ LOCATION OF VILLAGE WELL 2

JOB NO.	W0950-021
BOOK NO.	-
DRAWN BY	KAT
CHECKED BY	RJY
DATE	SEP 2004
REVISIONS	
REFERENCE FILE	W019base.dwg
DRAWING FILE	W019base.dwg

604 Wilson Avenue
Menomonie, Wisconsin 54751

Cedar
corporation

engineers • architects • planners • environmental specialists
land surveyors • landscape architects • interior designers

715-235-9081
800-472-7272
FAX 715-235-2727
www.cedarcorp.com

Wis. Dept of Natural Resources
WEBSTER GROUNDWATER MONITORING
WEBSTER, WISCONSIN
TETRACHLOROETHYLENE ISOCONCENTRATION MAP

FIGURE
1

ORIGINAL DRAWING COURTESY OF
RREM, INC - ENGINEERING AND
ENVIRONMENTAL CONSULTANTS