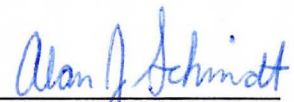


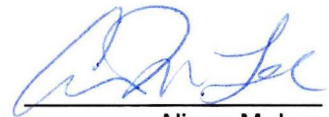
FID 246 077260
ERR / ERP

12/94

SOIL SAMPLING AND EXCAVATION REPORT
FORMER ECOLAB FACILITY
MEQUON, WISCONSIN



Alan Schmidt, C.P.G.
Senior Hydrogeologist



Alison M. Lee
Project Manager



RESIDUALS MANAGEMENT TECHNOLOGY, INC. — CHICAGO

999 PLAZA DRIVE — SUITE 100

SCHAUMBURG, IL — 60173-5407

708/995-1500 — 708/995-1900 FAX

TABLE OF CONTENTS

<u>Section</u>	<u>Page</u>
1. INTRODUCTION	1
2. FIELD INVESTIGATION	4
2.1 Excavation Activities	4
2.2 Soil Sampling Locations and Procedures	4
2.3 Soil Disposal	6
3. RESULTS OF EXCAVATION ACTIVITIES	7
3.1 Analytical Results	7
3.2 Plan for Further Action	9

List of Tables

Table 1	Summary of Analytical Data	8
---------	----------------------------------	---

List of Figures

Figure 1	Site Location Map	2
Figure 2	Soil Sampling Locations and Limits of Excavation	5

List of Appendices

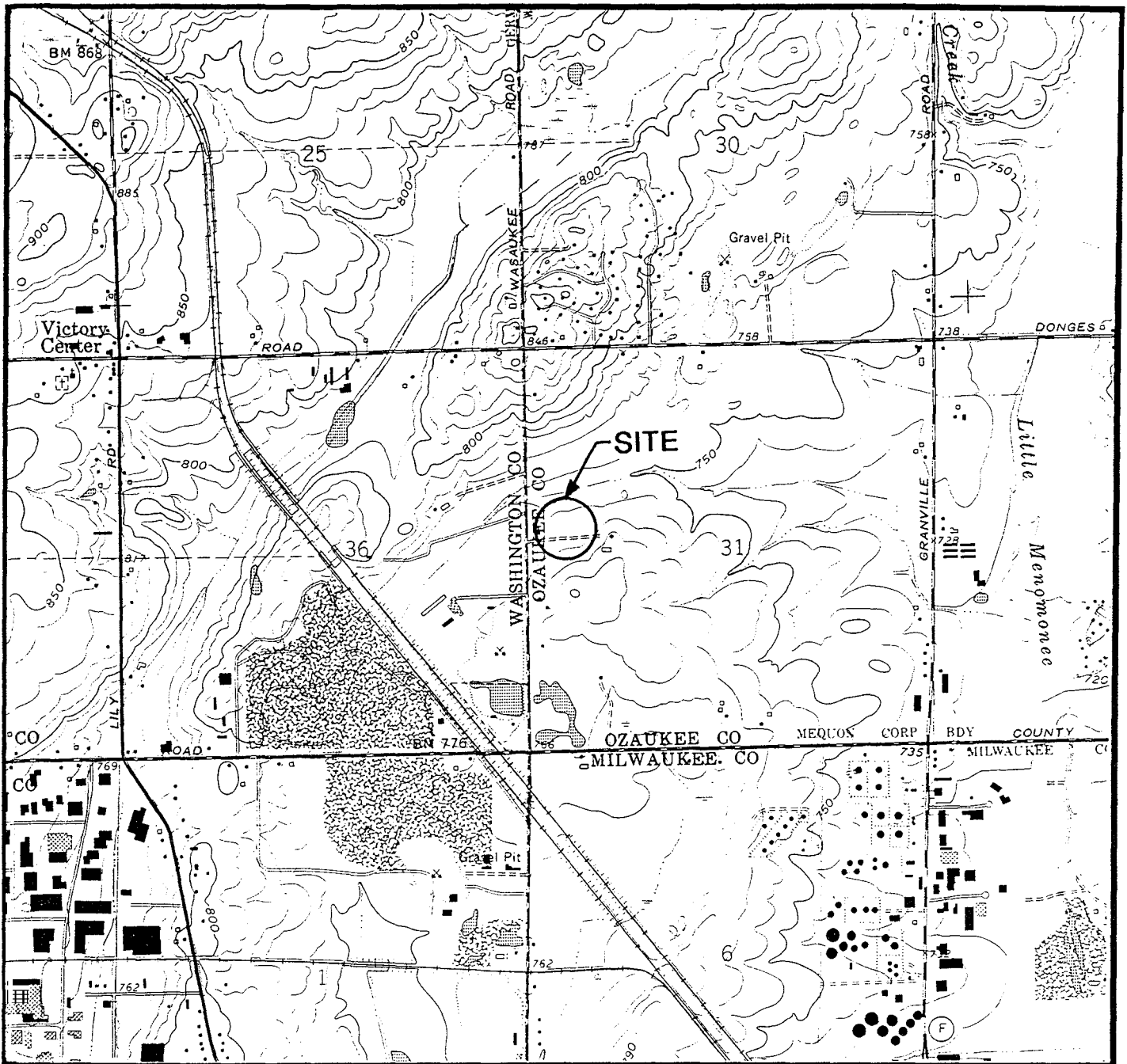
Appendix A	Ecolab PRP Committee Letter to WDNR
Appendix B	Photographs
Appendix C	Chain of Custody Form and Analytical Data Sheets
Appendix D	Manifests

Section 1
INTRODUCTION

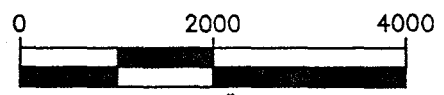
The former Ecolab Facility (Site), shown on Figure 1, is located in Mequon, Wisconsin at 10014 N Wausaukee Road. The facility was operated as a wax recycling facility in the 1970s until portions of the operation were sold or transferred in the 1980s. Wax recycling operations are no longer conducted at the site. The site is currently operated by Cermatics, Inc. which operates a permitted hazardous waste storage and solvent recycling facility.

Although portions of the business were transferred, residual materials found to contain PCBs were not transferred and remained on the property. The material existed in large blocks or in containers in an area approximately 30' x 35' referred to as the wax storage area. Wax chips were also evident in the soils below the containers in this area. A potentially responsible parties (PRP) committee was assembled in 1987 to address the proper disposal of wax materials containing PCBs. Following agreements reached with the Wisconsin Department of Natural Resources (WDNR), the PRP group retained CBC Environmental (CBC) to sample the wax materials and to arrange for proper disposal and cleanup of the materials. Materials and soils containing wax chips were excavated and disposed in June 1989. Soil samples collected at the base of the excavation indicated that aroclor PCBs were present at very low levels and decachlorobiphenyl (DCB), a PCB, was present at concentrations ranging from 2.7 to 460 ppm. Two subsequent sampling events conducted in 1989 and 1990 indicated that aroclor PCBs were not present at levels requiring additional excavation, but elevated levels of DCB in soils were still present. In order to receive written acceptance of the cleanup and a release from future enforcement actions by the WDNR, the PRP committee elected to excavate additional soils in the wax storage area.

The PRP group submitted a workplan to WDNR in July 1994 (Workplan) which proposed further excavation and sampling activities at the Site. WDNR verbally approved the plan but had several questions concerning potential contamination in the original trailer area adjacent to the wax storage area. In response, the PRPs prepared a letter which presented information on locations of the trailers and previous samples collected. Three soil samples, collected by WDNR near the original locations of the trailers, did not detect aroclor PCBs or DCB. A copy of this September 1994 letter is included in Appendix A.



STATE LOCATION



SCALE: 1"=2000'



SITE LOCATION MAP
ECOLAB
MEQUON, WISCONSIN

SOURCE: BASE MAP FROM MENOMONEE FALLS, WISCONSIN 7.5 MINUTE USGS QUADRANGLE DATED 1958 AND REVISED 1994.



DWN. BY:	DKJ
APPROVED BY:	AMC
DATE:	DECEMBER 1994
PROJ. #	3268.02
FILE #	32680202

FIGURE 1

The PRP group conducted further excavation and sampling activities in October 1994. Approximately 75,000 pounds of soils were excavated from the wax storage area and the original trailer area, and 16 samples plus one duplicate sample were collected from the base of the excavations for analysis of aroclor PCBs and DCB. This report contains the results of these activities.

A three foot square area was defined around each sampling point. This square was divided into equal quadrants from which soil was collected with clean stainless steel spoons and composited in clean stainless steel bowls. Following compositing, soils were collected in 60 ml. wide mouth glass jars with Teflon[®] septa lids. These samples were packed in ice for overnight shipment to NET Midwest Laboratory in Rockford, Illinois for analysis of aroclor PCBs and DCB by EPA method 8080. The chain of custody form for sample shipment and laboratory reports are included in Appendix C.

2.3 Soil Disposal

Excavated soils and surface vegetation were deposited in three open top roll off boxes supplied by Chemical Waste Management. A total of 75,135 pounds (approximately 25 cubic yards) of soils were removed. Soils were hauled in roll off boxes by Chemical Waste Management to its landfill in Emelle, Alabama. Appendix D contains copies of hazardous waste shipping manifests.

LEGEND

- 1
5.1ppm SOIL SAMPLE LOCATION AND NUMBER WITH DCB CONCENTRATION IN PARTS PER MILLION
- APPROXIMATE LIMITS OF EXCAVATION

NOTE

1. BASE MAP TAKEN FROM STS CONSULTANTS LTD. CONSULTING ENGINEERS DRAWING TITLED LOCATION OF SWMUS, FIGURE NUMBER 2-3, DATED 8/15/94, CADFILE NUMBER 84475002.

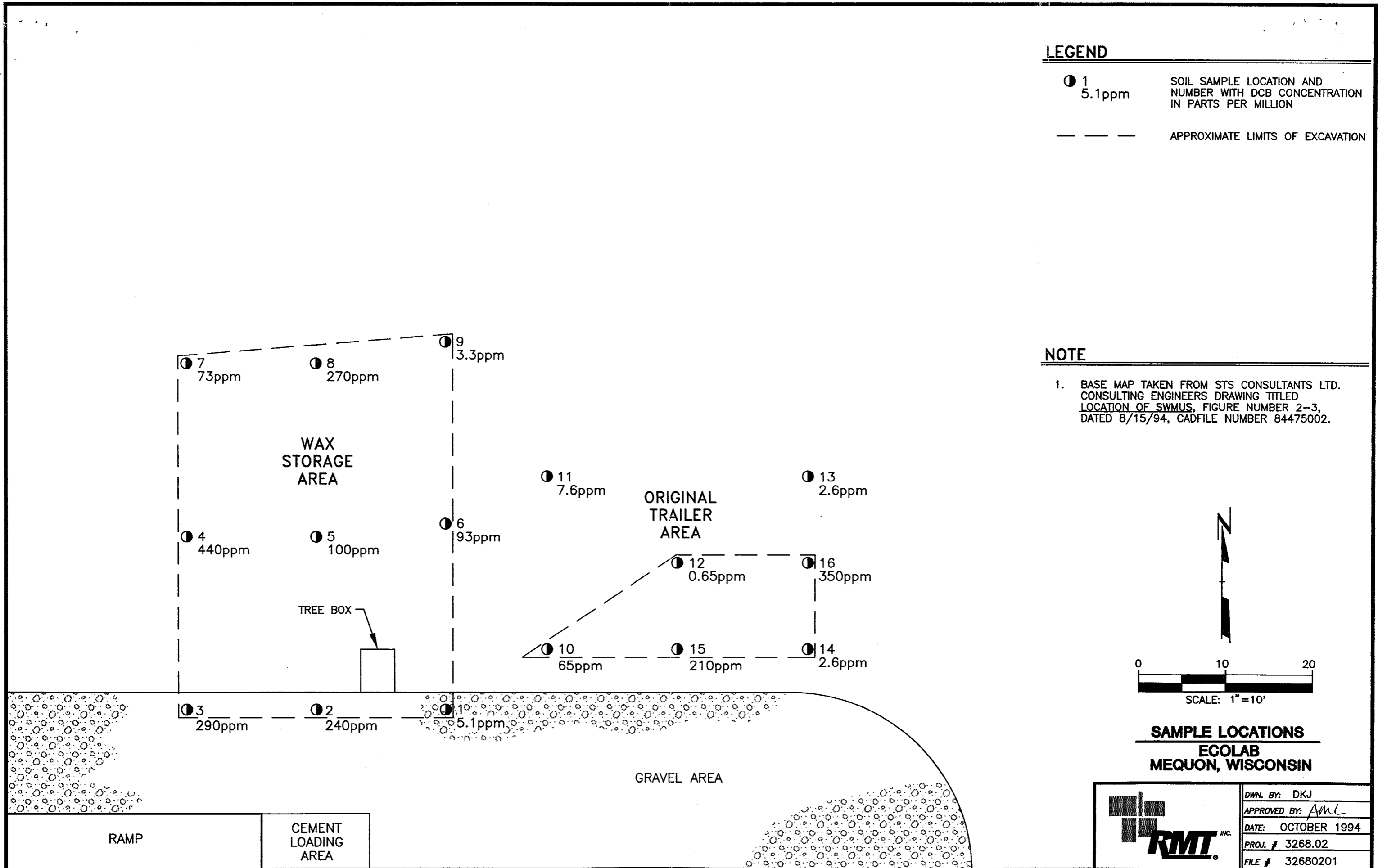


FIGURE 2

Section 2 FIELD INVESTIGATION

2.1 Excavation Activities

The approved July 1994 Workplan described the scope of work for activities and procedures necessary to complete soil removal from the wax storage area at the former Ecolab site. Figure 2 of the Workplan outlined the proposed area for excavation and the locations of samples to be collected. Prior to mobilizing, the decision was made by the PRPs to collect additional samples in the original trailer area to address WDNR questions concerning previous activities conducted in this area. Following removal of the grass surface, wax chips were evident in the soils at a few locations and it was decided in the field that additional soils should be removed in this area. Soil excavation limits for both areas are shown on Figure 2.

Soils were excavated by RTE, Inc., a subcontractor to RMT, Inc., using a combination backhoe/end loader to an average depth of 3 inches in both areas. In the south end of the wax storage area north of the tree box, wax chips were evident below the 3 inch excavation. Additional soils were excavated in this area to an average depth of 6 inches. Soils across the site were generally very stiff, moist, plastic, brown lean clays with gravel. The soils appeared to be fill or reworked clays. Selected photographs of site activities are included in Appendix B. The photographs show the approximate areas of excavation.

2.2 Soil Sampling Activities

Following excavation activities, surface soils were sampled on a grid pattern at the base of the excavation in the wax storage area. Sample locations 1 through 9 were laid out in the pattern approved in the Workplan. Samples were also collected in the original trailer area at locations closely approximating the front and back of the trailers. Sample locations 13 and 14 were collected at locations believed to be the front of the trailers. Likewise, locations 10 and 11 approximated the end of the trailers. Sample location 12 was collected between the two trailers. These samples were collected to determine if there were any residual wax chips in soils associated with loading or unloading of the trailers. Sample locations 10, 12, 14, 15, and 16 were collected at the base of the excavation to evaluate soil conditions along the edges of the excavation. See Figure 2 for soil sampling locations.

Section 3
RESULTS OF EXCAVATION ACTIVITIES

3.1 Analytical Results

Soil samples were analyzed by NET laboratory by EPA method 8080 for aroclor PCBs and DCB. Table 1 contains a summary of soil analyses. Analytical data are included in Appendix C.

Analytical data are compared to cleanup levels established in the State of Wisconsin for materials containing PCBs (internal WDNR memo dated February 17, 1987). In establishing cleanup objectives for PCB spills, the memo states that the range for residual PCB in soil should be between 5 and 25 ppm. Table 1 of the memo lists factors for consideration in determining site specific cleanup objectives and the influence each factor should have on the cleanup objective. Higher PCB levels should be allowed to remain at industrial facilities where there is limited potential for human exposure or environmental impact. The former Ecolab Facility site meets the majority of the criteria for establishing higher cleanup goals in the 25 ppm range for residual PCBs in soil.

Of the 16 locations sampled and analyzed, there was only one detection of an aroclor above estimated quantitation limits. PCB-1260 was detected at Location 2 at 2.1 ppm which is well below the WDNR generic action level of 5 ppm for PCBs.

DCB was detected at 12 of the 16 sample locations above the 5 ppm action level. Of the 9 samples collected from the wax storage area, DCB was detected at locations 1 and 9 at 5.1 and 3.3 ppm, respectively. Analytical results from all other samples (locations 2 through 8) indicated the presence of DCB at concentrations ranging from 73 to 440 ppm.

Seven samples, locations 10 through 16, were collected in the original trailer area. Of these 7, only 4 locations exceed the 5 ppm action level and one of these is below 25 ppm. DCB was detected at locations 7, 10, 15, and 16 at 7.6, 65, 210, and 350 ppm respectively.

**TABLE 1
SUMMARY OF SOIL ANALYTICAL RESULTS**

SAMPLE NUMBER LIFT #1	SAMPLE DEPTH INCHES	CONSTITUENT CONCENTRATION in mg/kg							
		PCB-1016	PCB-1221	PCB-1232	PCB-1242	PCB-1248	PCB-1254	PCB-1260	DCB
LOCATION 1	3	<3.6	<3.6	<3.6	<3.6	<3.6	<3.6	<3.6	5.1
LOCATION 2	3	<1.7	<1.7	<1.7	<1.7	<1.7	<1.7	2.1	240
LOCATION 3	3	<160	<160	<160	<160	<160	<160	<160	290
LOCATION 4	3	<18	<18	<18	<18	<18	<18	<18	440
LOCATION 5	6	<78	<78	<78	<78	<78	<78	<78	100
LOCATION 6	3	<82	<82	<82	<82	<82	<82	<82	93
LOCATION 7	3	<78	<78	<78	<78	<78	<78	<78	73
LOCATION 8	3	<190	<190	<190	<190	<190	<190	<190	270
LOCATION 8 DUP	3	<200	<200	<200	<200	<200	<200	<200	450
LOCATION 9	3	<1.6	<1.6	<1.6	<1.6	<1.6	<1.6	<1.6	3.3
LOCATION 10	3	<39	<39	<39	<39	<39	<39	<39	65
LOCATION 11	3	<3.6	<3.6	<3.6	<3.6	<3.6	<3.6	<3.6	7.6
LOCATION 12	3	<1.1	<1.1	<1.1	<1.1	<1.1	<1.1	<1.1	0.65
LOCATION 13	3	<2.0	<2.0	<2.0	<2.0	<2.0	<2.0	<2.0	2.6
LOCATION 14	3	<2.0	<2.0	<2.0	<2.0	<2.0	<2.0	<2.0	2.6
LOCATION 15	3	<85	<85	<85	<85	<85	<85	<85	210
LOCATION 16	3	<220	<220	<220	<220	<220	<220	<220	350

3.2 Plan for Further Action

The Ecolab PRP committee plans to conduct additional activities at the site in the spring/summer of 1995. The committee is currently evaluating alternatives for cleanup and will submit a plan to WDNR for the former Ecolab site prior to conducting additional work.

APPENDIX A

Ecolab PRP Committee Letter to WDNR



OUTBOARD MARINE CORPORATION

100 Sea-Horse Drive
Waukegan, Illinois 60085-2195
Phone 708/689-6200

20 September 1994

Pamela Mylotta
State of Wisconsin
Department of Natural Resources (DNR)
Environmental Repair Program
4041 N. Richards Street; P.O. Box 12436
Milwaukee, WI 53212

RE: *Previous Locations of Trailers and Site Cleanup Activities
Former Ecolab Facility Remediation Project
Mequon, WI*

VIA OVERNIGHT DELIVERY

Dear Ms. Mylotta:

On behalf of the Ecolab PRP Committee, I am responding to your questions related to the former Ecolab remediation which were raised in our telephone conversation last month, including areas being addressed by the committee, original locations of wax materials, and soil samples taken. Note that the PRP committee has concluded that the area where the trailers were originally located in Mequon had been fully addressed once the trailers and wax materials were removed from the Ecolab facility in 1989. The PRP Committee has focussed further assessment on the area where spilled wax materials were present at the time wax materials were removed in 1989.

I have reviewed OMC and DNR files, reviewed an aerial photograph from 1985 of the site, and spoken with Mr. Rasmussen and several current and former Outboard Marine Corporation (OMC) employees who were involved in the early phases of the project. Based on this effort, I am able to provide you the following information in response to your questions.

PRP COMMITTEE ACTIVITIES

The PRP Committee formed voluntarily during 1988 in response to contacts from the owner of Ecolab (Mr. Peter Rasmussen) and the Wisconsin Department of Natural Resources (DNR) to selected former customers of Ecolab, Inc. regarding potential responsibility for materials present at two facilities associated with the defunct business. Ecolab had operated a wax reclamation operation, had sold off portions of the equipment/operations to another business who operated at Ecolab's former Mequon location, and had residual processed and unprocessed materials in two locations. Some of the material contained polychlorinated biphenyls (PCB), including decachlorobiphenyl (DCB), a less common non-Aroclor PCB which is wax-like and solid at normal temperatures. Specifically, there were wax materials outside and in two trailers at the last operating location of the Ecolab business in Mequon, Wisconsin (10014 North Wausaukee

Road) and wax materials contained in one trailer at another property owned by Mr. Rasmussen in Menomonee Falls, Wisconsin (N56 W16997 Silver Spring Road, at 186th Street and Silver Spring; sometimes called the 'Valley View' site in file records).

The PRP Committee agreed to stabilize and/or remediate the sites in accordance with a work plan presented to DNR at a December 12, 1988 meeting and approved by DNR in a letter dated December 22, 1988. The work plan included:

- Waste material disposal, specifically:
 - (1) the wax stored inside two trailers at the Mequon site, including drummed material in the first (more northern) trailer and the boxes of reportedly reprocessed wax in the second (southern) trailer,
 - (2) the wax stored in one trailer at the Menomonee Falls site, (note that at this site, all material was contained within the trailer), and
 - (3) other wax debris stored outside at the Mequon site (the loose drums and the blocks of wax material outside of the trailers, mainly on pallets).
- Soil assessment/remediation at the Mequon site, specifically the soil area stained with loose chips of wax (in a gravel covered area where drums and blocks had been staged).

In May to June 1989, a contractor hired by the PRP Committee packaged, removed, transported, and disposed of the wax materials listed above. In addition, the contractor decontaminated the three trailers and excavated soil from an approximate 30 foot by 35 foot area north and west of a tree at the Mequon site. Soil samples were collected in the area of the excavation in 1989 and residual levels of PCB/DCB were detected. The area was resampled twice in 1990 to verify the results. After resampling and further discussions with DNR, it was determined that additional soil remediation was needed to meet cleanup objectives.

There were approximately 300 drums of wax associated with Northern Precision which were reported as PCB-free which were not handled by the committee. These drums were generally labelled with 'FRE' or 'S' codes. Mr. Rasmussen submitted a notarized affidavit regarding these drums dated December 7, 1988, a copy of which is present in DNR files. These drums were removed from the site by others.

ORIGINAL LOCATION OF MEQUON TRAILERS

DNR questioned where the trailers were originally located before work began at the Mequon site. An April 1985 aerial photograph from the Southeastern Wisconsin Regional Planning Commission shows two trailers located side by side, across the driveway to the north of what appears to be currently called the 'regulated hazardous waste container storage unit'. I can not

make out the tree on the aerial photograph, but the location of the trailers relative to the buildings appears to confirm that they were east of the tree. Attachment 1 is a copy of the portion of the aerial photograph showing the site and trailers.

OMC representatives (including Mr. Steve Otto, a former employee) first went to the sites in March 1987. At that time, the trailers were reportedly in their original locations. Attachment 2 is a sketch showing a side by side orientation of the two trailers at Mequon, with about 9 feet of distance and drums between them. According to Steve Otto in a recent telephone conversation, the trailers were next to each other in the orientation shown on the sketch and were located just north of the driveway. He did not recall their location relative to the tree but recalled that the trailers were across (north) from a building on-site. Although photographs were noted as being taken at that time, I have not been able to locate them in the files. The trailer to the south contained 'reclaimed' wax (which was in boxes). The trailer to the north was locked during the 1987 visit. Later in 1988, the north trailer was shown to contain drums of wax (some of which were reported in OMC notes from the time to have been the uncontained wax outside which was placed in drums and put in the north trailer).

I spoke with Mr. Peter Rasmussen on the telephone about the Mequon site. He indicated that originally the trailers were side by side near where the edge of the driveway is now located, just to east and possibly slightly south of the tree box (because drive/roadway was extended/widened later). The trailers were moved prior to September 1988, apparently to facilitate consolidation and removal of materials. His recollection confirms what others have said about the trailer locations.

Other OMC employees were on-site in 1988 and again in 1989 after the trailers had been moved and photos show their locations to the west of the tree box, including during removal/cleanup (June 1989). Refer to Attachments 3 and 4 for copies of trailer photos from 1988 and 1989. (Note that at that time, the drums attributed to Northern Precision were stacked along the gravel drive across from the current hazardous waste storage unit.)

LOCATION OF BLOCK WAX & DRUMS OUTSIDE OF TRAILERS

DNR wanted to verify where wax materials and drums of wax had been located outside of trailers (uncontained). Photos in DNR files from June 1987 show some drums at the west end of the trailers and a group of drums to the north of what appears to be a portion of the tree (in the upper right corner of the photo at the bottom left of the page; Attachment 5). OMC file notes from 1987 indicate approximately 72 drums were present between the trailers at that time. Steve Otto recalled that most of the material outside was within 20 feet of the trailers.

Attachment 6 includes photos showing the location of loose drums and bulk wax outside during the 1988 site visit, including the area where uncontained wax had previously been located (top photo). This location appears to be north and a bit west of the tree, in the same general area as shown in the DNR photos and within the 30 foot by 35 foot area where soil removal work has been conducted. According to OMC notes from the 1988 site visit, the uncontained wax had

been placed in drums and put into the trailer to the north.

In 1989 at the time of removal/disposal, a group of drums and block wax were located in the area near the tree, basically in the same area as in 1988 and 1987. Attachment 7 shows photos of block wax and drums to the north and west of the tree in 1989. This group of material is also somewhat visible relative to the trailers and the tree in Attachments 3 and 4.

Overall, it appears that the drums and bulk wax materials which were not contained in the trailers were located just northwest of the tree (in the area which was excavated later due to spilled wax on the ground). Wax was spilled or evident on the ground during removal only adjacent to the bulk wax/drums shown on Attachments 6 and 7. Some miscellaneous drums were initially between and adjacent to the trailers but were later consolidated and put inside one of the trailers.

SOIL REMOVAL AND SAMPLING

DNR collected samples in 1987 at three soil sites (SS-1, SS-2, SS-3) near the original locations of the trailers on the Mequon site with no PCB/DCB detected. Attachment 8 shows the approximate locations of the samples on a site sketch.

Based on the December 1988 letter from DNR approving the PRP Committee's removal/cleanup work plan, sampling was to be done where there was evidence of spilled wax. As stated above, this was the area where loose drums and bulk wax were stored to north of the tree at the Mequon site. Soil was excavated from this area in 1989 after the wax material was removed. Attachment 9 includes photos showing the area of soil excavation to north of the tree. This area is approximately 30 feet wide by 35 feet long, as shown on Attachments 10 and 11. Samples were collected in a 3 by 3 grid pattern across the excavation area and included locations near the doors of the trailers at that time in 1989 (Attachment 10). The sampling was felt to cover all areas of concern to DNR in its December 1988 letter. The area was resampled in November 1989 and no PCB was detected, however, review of the chromatograms revealed that the tests were not run for a sufficient time to assure that DCB would have eluted. The area was resampled again for PCB/DCB in September 1990 and Attachment 11 shows the sample locations. This last sampling confirmed that residual levels of PCB/DCB were present in the soil.

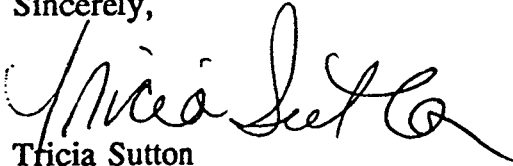
UPCOMING SOIL EXCAVATION AND SAMPLING

Based on the non-detect DNR sample results in 1987 in the area where the trailers were originally located at Mequon, the PRP committee had understood that area had been fully addressed to DNR's satisfaction once the trailers and wax material had been removed. Based on visual evidence of spilled wax in 1988-1989, the PRP committee has focussed sampling in the area of the tree box and the excavation at Mequon.

As you are aware, the PRP Committee submitted a work plan to remove additional soil from the 30 foot by 35 foot area and resample. The committee has selected Residuals Management Technology, Inc. (RMT) to conduct the work. Contract work on-site will be done by RTE, Inc. of Lombard, IL. I expect work may begin in early October. I will contact you with a more exact date when I have the contractor's schedule.

The PRP Committee understood that once this work was complete, DNR would issue a final cleanup acceptance letter to indicate that it will not initiate future enforcement actions or other cost recovery actions against the PRPs related to the wax previously stored on the sites. I would appreciate your input if DNR has concerns other than those addressed in the soil removal/sampling work plan which you recently approved verbally. Please contact me at 708/689-5228 if you have any comments or questions.

Sincerely,



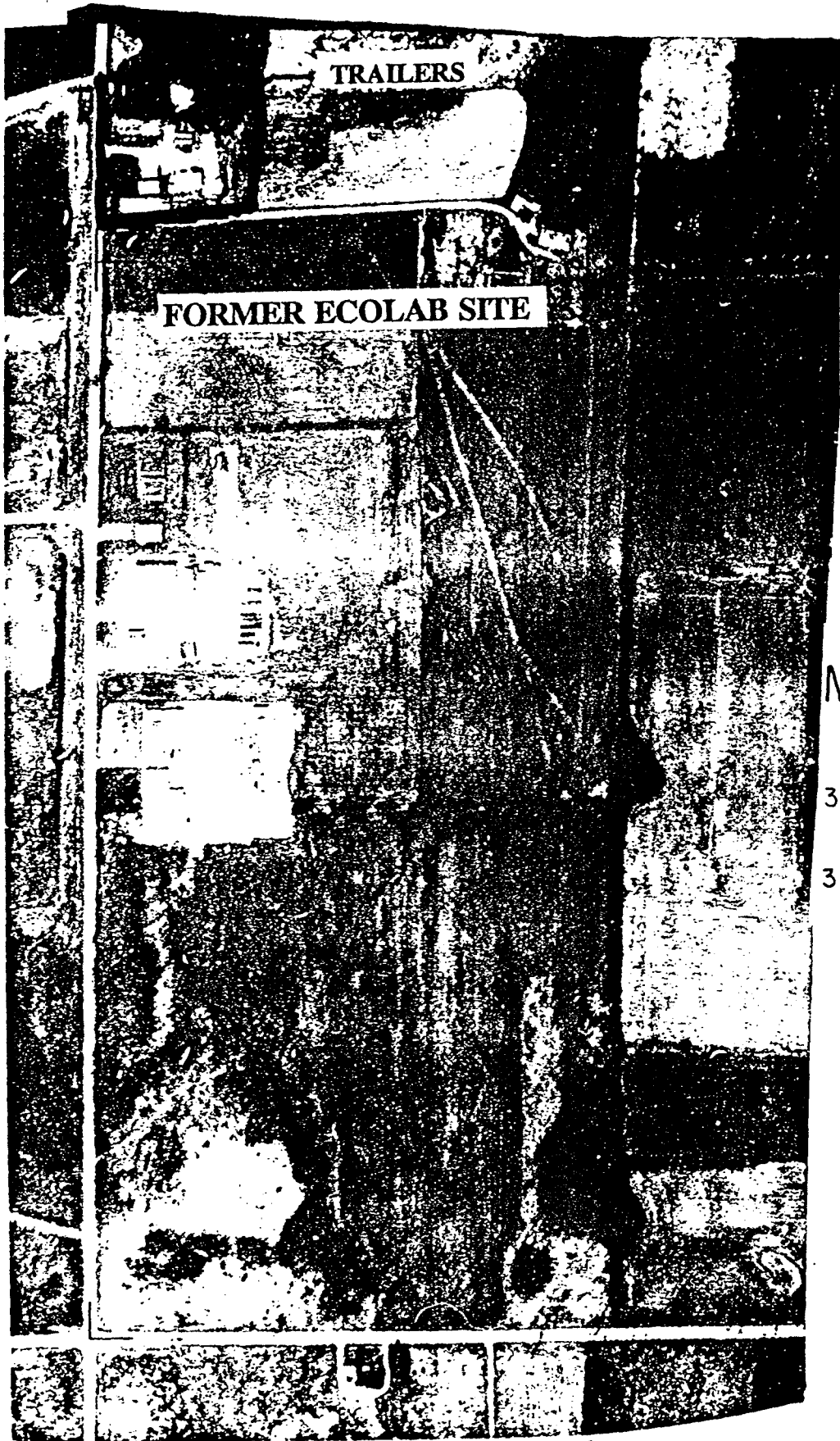
Tricia Sutton
Environmental Affairs Specialist

enclosures

c: Tim Mulholland - WI DNR, SW/3
Madhukar S. Shirke, Cermatics, Inc.

ts/ft:\wpdoc\donodoc\ecolab\ecodnr2.let

ATTACHMENT 1 - AERIAL PHOTOGRAPH



1" = 400'

MEQUON

30	2	1	2	1	29
	3	4	3	4	
31	2	1	2	1	32
	4	3	4		

T 9 N

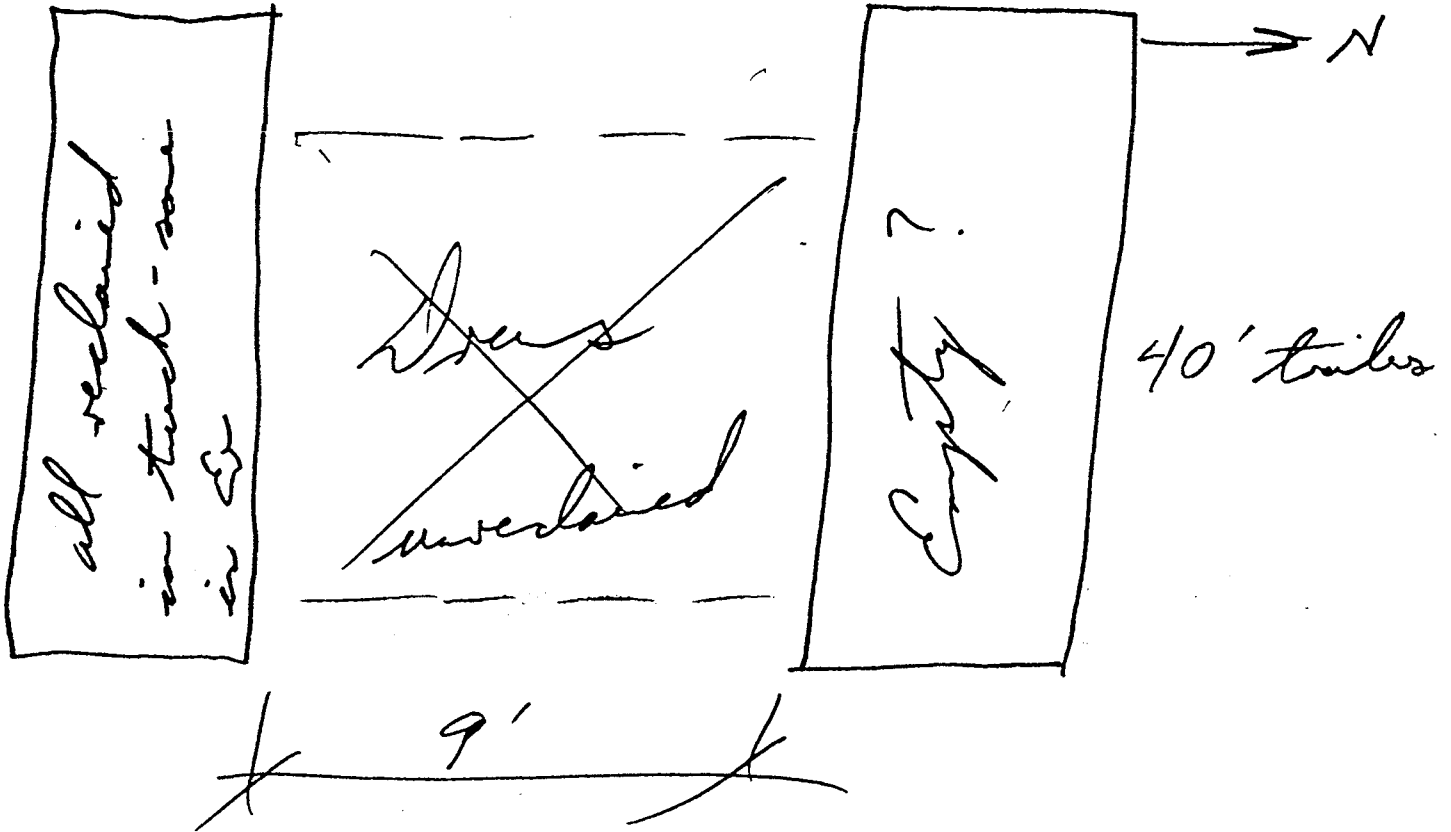
R 21 E

FROM: Southeastern Wisconsin Regional Planning Commission
April 1985

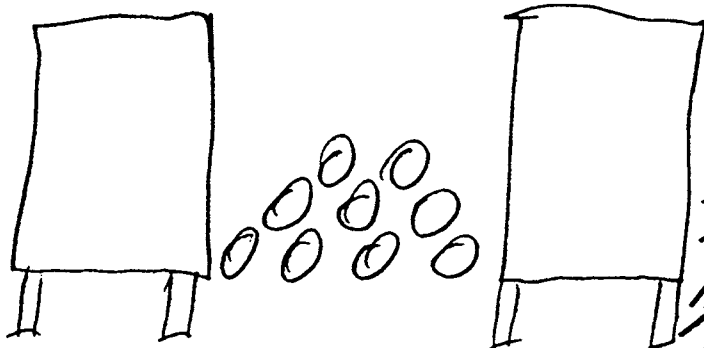
ATTACHMENT 2 - TRAILER LOCATIONS 1987

Site visit @ Coabab 3-6-87
Ray took pictures

Approx 72 hrs between trailers

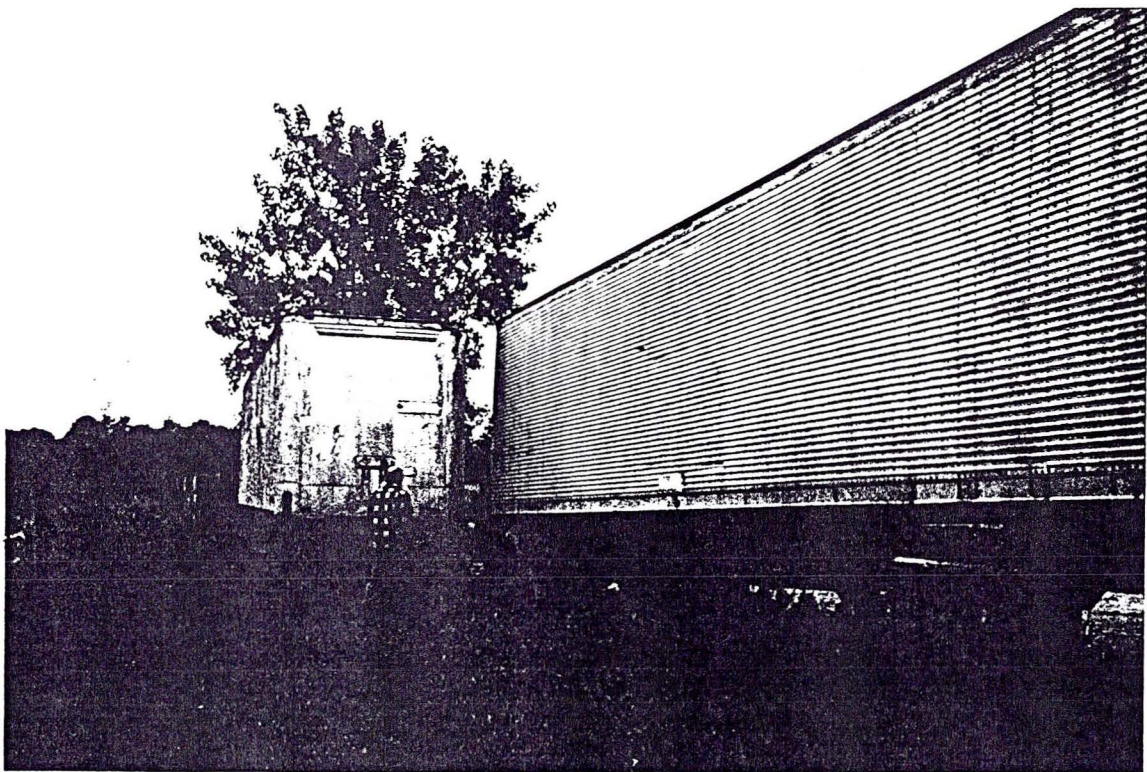
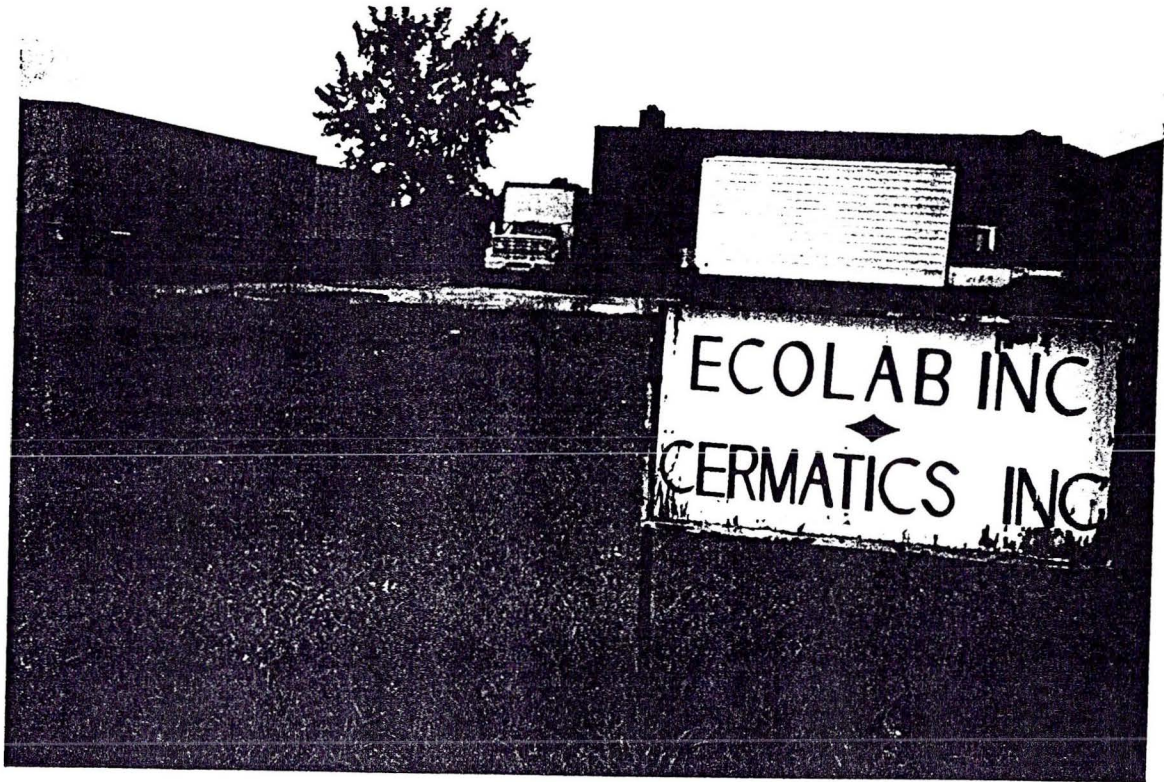


Ken Wallace - ITAP notify when
a perishes

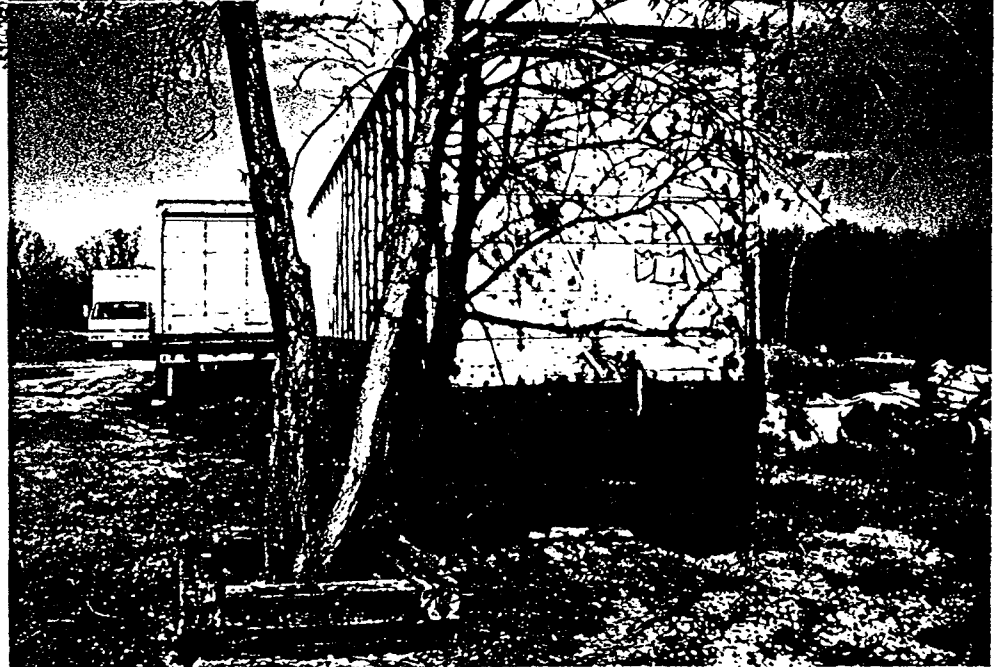
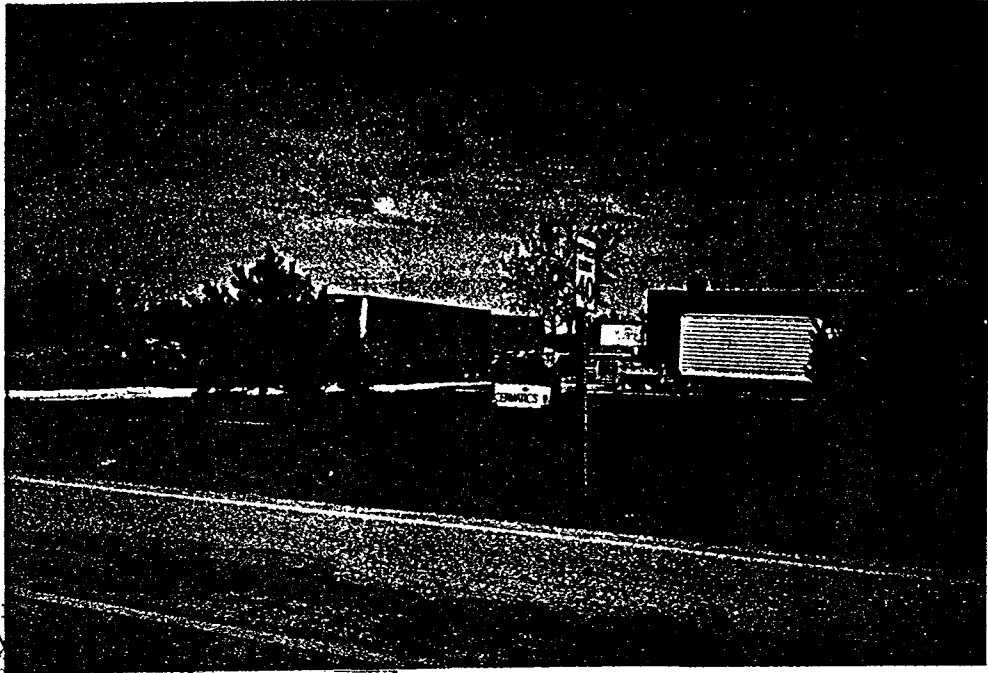


Impression of P.T.
Sierra to clean up
problem without threat of
legal interference. Sierra in
his belief the work belonged
to G - not trying to pin
problem on an innocent party.
Wished to work in a cooperative
effort to solve problem.

Attachment 3 - Photos of Trailers from 1988



Attachment 4 - Photos of Trailers from 1989



Attachment 5 - DNR File Photos of Drum Locations from 1987



E, F, G



Drum A E →



Drum C

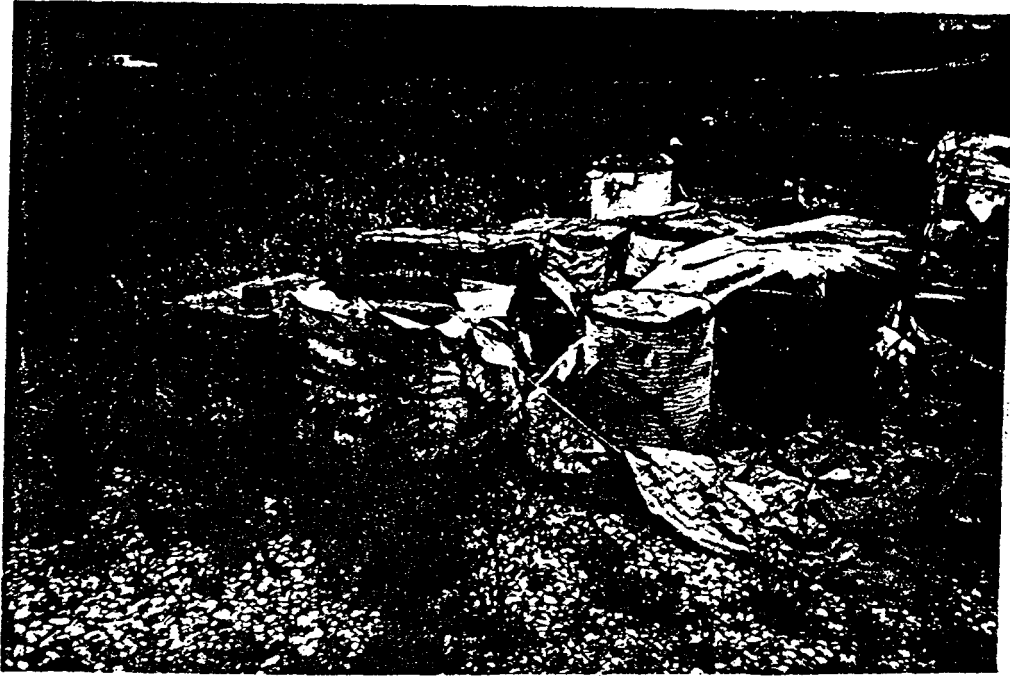


Drum D

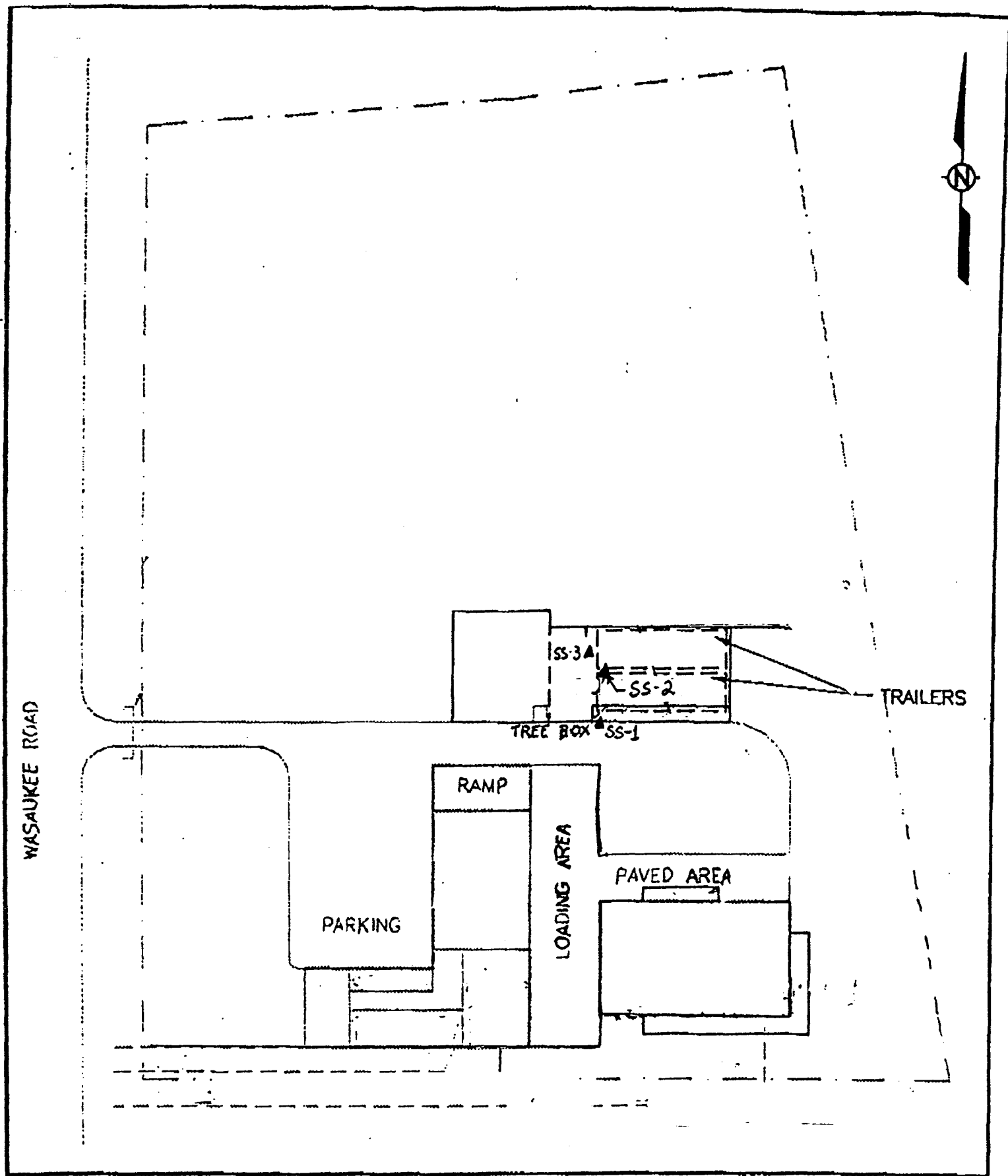
Attachment 6 - Photos of Drums and Wax from 1988



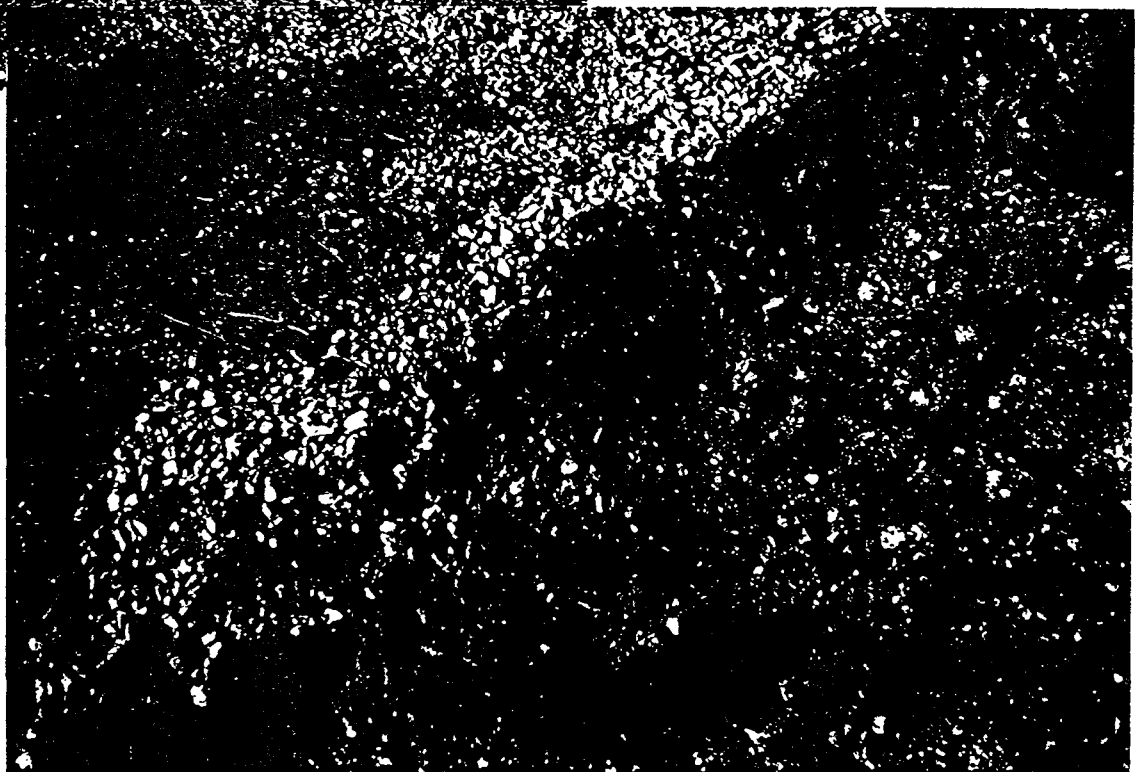
Attachment 7 - Photos of Wax and Drums in 1989



Attachment 8 - Approximate Locations of the DNR Soil Samples in 1987



Attachment 9 - Photos of Soil Excavation Area (1989)



Attachment 10 - Soil Sample Locations (1989)

Mequon, WI

S. DelPizzo, B. Renort -
 G. Lenzi -
 P. Mulotha -

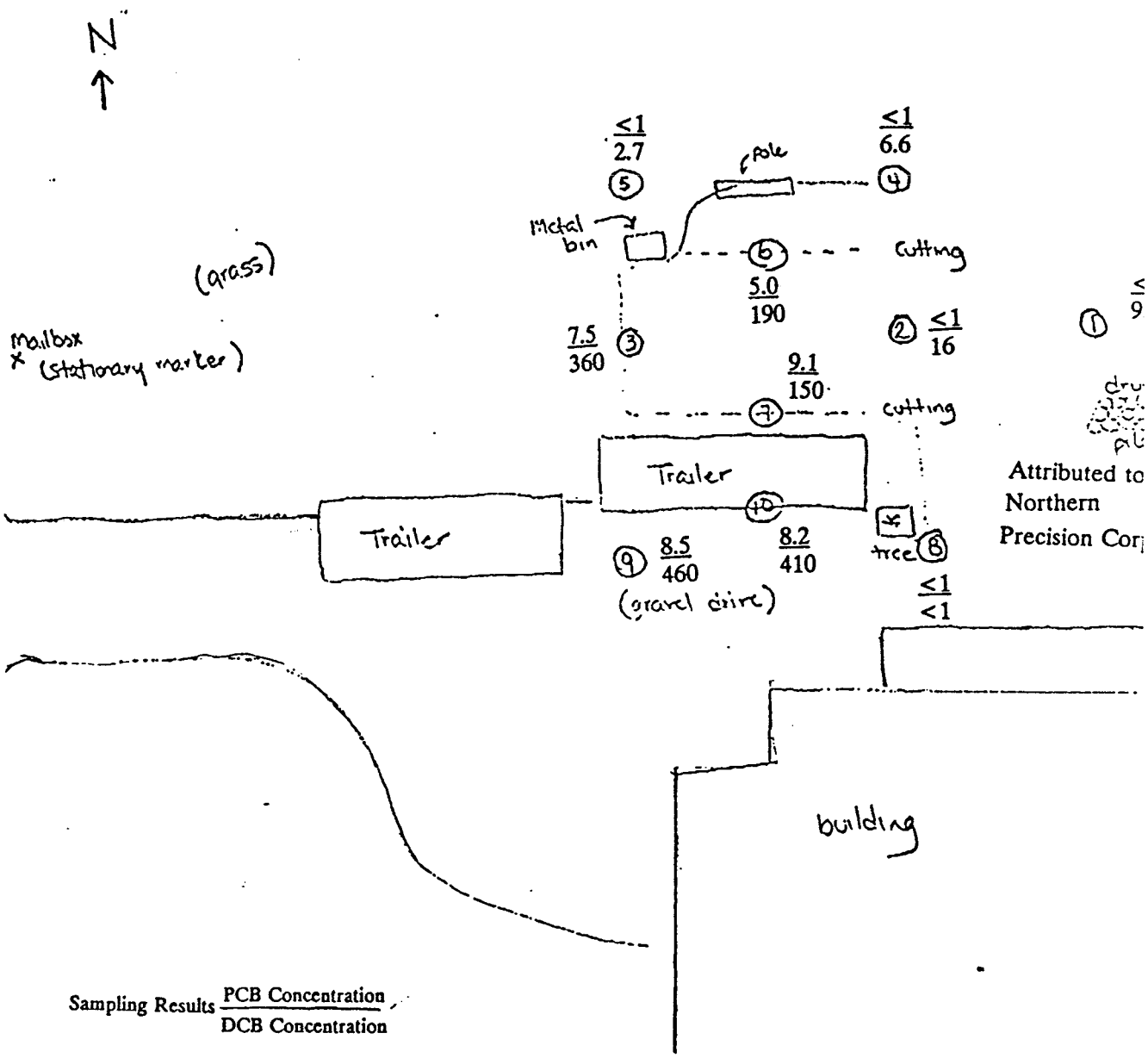


Figure 9.

Sketch of Facility with Approximate Sampling Locations and Results - June 9, 1989

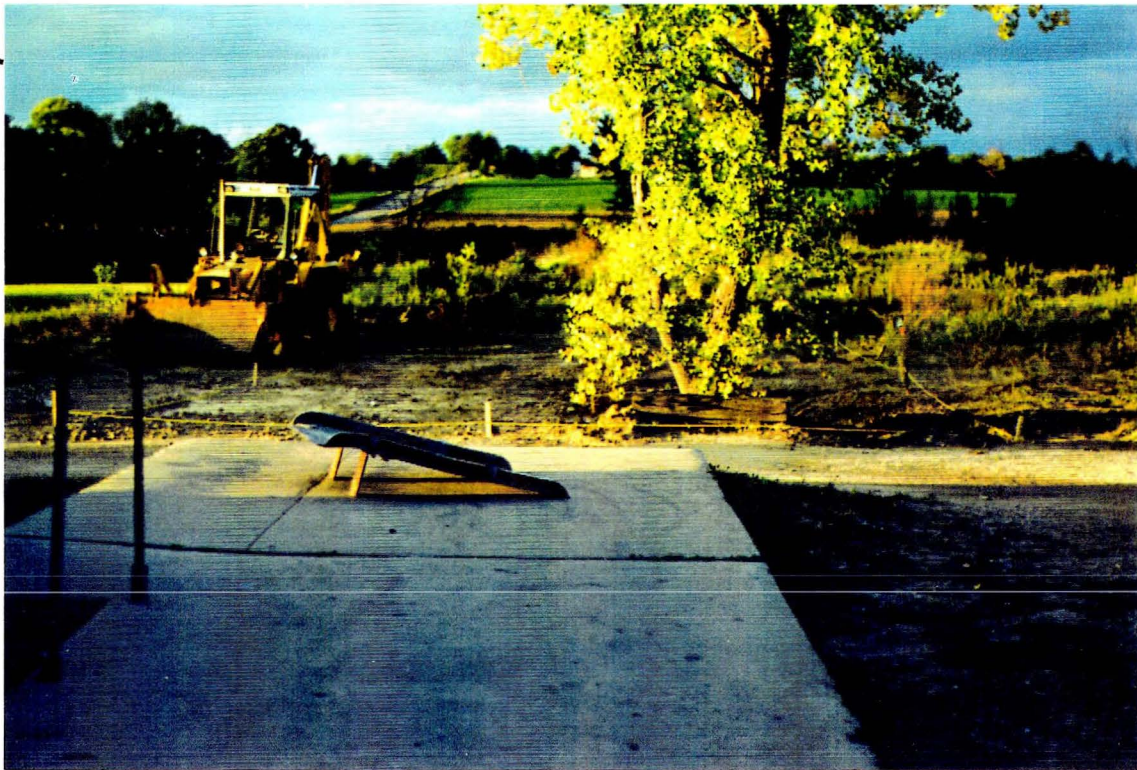
APPENDIX B
Photographs



PHOTOGRAPH #1: LOOKING SOUTHEAST AT EXCAVATION IN WAX STORAGE AREA ORIGINAL TRAILER AREA EXCAVATION IS BETWEEN TREE BOX AND BLUE TRUCK



PHOTOGRAPH #2: EXCAVATED SOILS LOADED INTO ROLL-OFF CONTAINERS



PHOTOGRAPH #3: LOOKING NORTH FROM LOADING DOCK AT WAX STORAGE AREA EXCAVATION



PHOTOGRAPH #4: LOOKING SOUTHWEST AT SAMPLE LOCATIONS 10 - 16 IN ORIGINAL TRAILER AREA EXCAVATION



PHOTOGRAPH #5: LOOKING WEST AT SOUTHERN END OF WAX STORAGE AREA WHERE EXCAVATION EXTENDED TO 6" DEEP



PHOTOGRAPH #6: SAMPLE LOCATION #5 IN AREA OF 6" EXCAVATION

APPENDIX C

Chain of Custody Form and Analytical Data Sheets



NATIONAL ENVIRONMENTAL TESTING, INC.

Rockford Division
3548 35th Street
Rockford, IL 61109
Tel: (815) 874-2171
Fax: (815) 874-5622
(800) 807-2877

ANALYTICAL AND QUALITY CONTROL REPORT

Ms. Tricia Sutton
OUTBOARD MARINE CORP.
190 Seahorse Drive
Waukegan, IL 60085

10/18/1994

NET Job Number: 94.03956

IEPA Cert. No. 100220
WDNR Cert. No. 999447240

Enclosed is the Analytical and Quality Control reports for the following samples submitted to the Rockford Division of NET, Inc. for analysis:

<u>Sample Number</u>	<u>Sample Description</u>	<u>Date Taken</u>	<u>Date Received</u>
143876	Lift 1 Location #1, Comp. Soil	10/04/1994	10/05/1994
143877	Lift 1 Location #2, Comp. Soil	10/04/1994	10/05/1994
143878	Lift 1 Location #3, Comp. Soil	10/04/1994	10/05/1994
143879	Lift 1 Location #4, Comp. Soil	10/04/1994	10/05/1994
143880	Lift 1 Location #5, Comp. Soil	10/04/1994	10/05/1994
143881	Lift 1 Location #6, Comp. Soil	10/04/1994	10/05/1994
143882	Lift 1 Location #7, Comp. Soil	10/04/1994	10/05/1994
143883	Lift 1 Location #8, Comp. Soil	10/04/1994	10/05/1994
143884	Lift 1 Location #8 DUP, C. Soil	10/04/1994	10/05/1994
143885	Lift 1 Location #9, Comp. Soil	10/04/1994	10/05/1994
143886	Lift 1 Location #10, Grab Soil	10/04/1994	10/05/1994
143887	Lift 1 Location #11, Grab Soil	10/04/1994	10/05/1994
143888	Lift 1 Location #12, Grab Soil	10/04/1994	10/05/1994
143889	Lift 1 Location #13, Grab Soil	10/04/1994	10/05/1994
143890	Lift 1 Location #14, Grab Soil	10/04/1994	10/05/1994
143891	Lift 1 Location #15, Grab Soil	10/04/1994	10/05/1994
143892	Lift 1 Location #16, Grab Soil	10/04/1994	10/05/1994

The Quality Control report is generated on a batch basis. All information contained in this report is for the analytical batch(es) in which your sample(s) were analyzed.

National Environmental Testing, Inc. certifies that the analytical results contained herein apply only to the specific samples analyzed.

Reproduction of this analytical report is permitted only in its entirety.

Diane Lohr, Project Manager
Rockford Division





NATIONAL ENVIRONMENTAL TESTING, INC.

Rockford Division
3548 35th Street
Rockford, IL 61109
Tel: (815) 874-2171
Fax: (815) 874-5622
(800) 807-2877

ANALYTICAL REPORT

Ms. Tricia Sutton
OUTBOARD MARINE CORP.
190 Seahorse Drive
Waukegan, IL 60085

10/18/1994

NET Job Number: 94.03956

Client Project ID: Ecolab PRP

<u>Analyte</u>	<u>Result</u>	<u>Flag</u>	<u>Units</u>	<u>Reporting Limit</u>	<u>Date Analyzed</u>	<u>Analyst Initials</u>	<u>Prep Batch No.</u>	<u>Run Batch No.</u>	<u>Method Reference</u>
SAMPLE NO. 143876	SAMPLE DESCRIPTION Lift 1 Location #1, Composite Soil							DATE-TIME TAKEN 10/04/1994 16:30	
Solids, Total	94.0		%		10/14/1994	tch		661	160.3 (3)
PCB Non-Aqueous Extraction	complete			COMPLETE	10/05/1994	jgr	46		





NATIONAL ENVIRONMENTAL TESTING, INC.

Rockford Division
3548 35th Street
Rockford, IL 61109
Tel: (815) 874-2171
Fax: (815) 874-5622
(800) 807-2877

ANALYTICAL REPORT

Ms. Tricia Sutton
OUTBOARD MARINE CORP.
190 Seahorse Drive
Waukegan, IL 60085

10/18/1994

NET Job Number: 94.03956

Client Project ID: Ecolab PRP

Analyte	Result	Flag	Units	Reporting	Date	Analyst	Prep	Run	Method Reference
				Limit	Analyzed	Initials	Batch	Batch	
SAMPLE NO. 143876	SAMPLE DESCRIPTION Lift 1 Location #1, Composite Soil					DATE-TIME TAKEN 10/04/1994 16:30			
PCB'S NON-AQUEOUS - 8080									
PCB-1016	<3.6	ELV	mg/kg	<0.04	10/07/1994	tmm	46	103	8080 (1)
PCB-1221	<3.6	ELV	mg/kg	<0.04	10/07/1994	tmm	46	103	8080 (1)
PCB-1232	<3.6	ELV	mg/kg	<0.04	10/07/1994	tmm	46	103	8080 (1)
PCB-1242	<3.6	ELV	mg/kg	<0.04	10/07/1994	tmm	46	103	8080 (1)
PCB-1248	<3.6	ELV	mg/kg	<0.04	10/07/1994	tmm	46	103	8080 (1)
PCB-1254	<3.6	ELV	mg/kg	<0.04	10/07/1994	tmm	46	103	8080 (1)
PCB-1260	<3.6	ELV	mg/kg	<0.04	10/07/1994	tmm	46	103	8080 (1)
Decachlorobiphenyl	5.1		mg/kg	<0.04	10/07/1994	tmm	46	103	8080 (1)
2,4,5,6-TCMX (Surr)	diluted	%		NA	10/07/1994	tmm	46	103	8080 (1)

ELV: Elevated RL due to matrix interference for all parameter(s) for test.





NATIONAL ENVIRONMENTAL TESTING, INC.

Rockford Division
3548 35th Street
Rockford, IL 61109
Tel: (815) 874-2171
Fax: (815) 874-5622
(800) 807-2877

ANALYTICAL REPORT

Ms. Tricia Sutton
OUTBOARD MARINE CORP.
190 Seahorse Drive
Waukegan, IL 60085

10/18/1994

NET Job Number: 94.03956

Client Project ID: Ecolab PRP

<u>Analyte</u>	<u>Result</u>	<u>Flaq</u>	<u>Units</u>	<u>Reporting Limit</u>	<u>Date Analyzed</u>	<u>Analyst Initials</u>	<u>Prep Batch No.</u>	<u>Run Batch No.</u>	<u>Method Reference</u>
SAMPLE NO. 143877	SAMPLE DESCRIPTION Lift 1 Location #2, Composite Soil							DATE-TIME TAKEN 10/04/1994 16:40	
Solids, Total	96.5		%		10/14/1994	tch		661	160.3 (3)
PCB Non-Aqueous Extraction	complete			COMPLETE	10/05/1994	jgr	46		





NATIONAL ENVIRONMENTAL TESTING, INC.

Rockford Division
3548 35th Street
Rockford, IL 61109
Tel: (815) 874-2171
Fax: (815) 874-5622
(800) 807-2877

ANALYTICAL REPORT

Ms. Tricia Sutton
OUTBOARD MARINE CORP.
190 Seahorse Drive
Waukegan, IL 60085

10/18/1994

NET Job Number: 94.03956

Client Project ID: Ecolab PRP

<u>Analyte</u>	<u>Result</u>	<u>Flag</u>	<u>Units</u>	<u>Reporting Limit</u>	<u>Date Analyzed</u>	<u>Analyst Initials</u>	<u>Prep Batch No.</u>	<u>Run Batch No.</u>	<u>Method Reference</u>
SAMPLE NO. 143877	SAMPLE DESCRIPTION Lift 1 Location #2, Composite Soil				DATE-TIME TAKEN 10/04/1994 16:40				
PCB'S NON-AQUEOUS - 8080									
PCB-1016	<1.7	ELV	mg/kg	<0.04	10/06/1994	tmm	46	103	8080 (1)
PCB-1221	<1.7	ELV	mg/kg	<0.04	10/06/1994	tmm	46	103	8080 (1)
PCB-1232	<1.7	ELV	mg/kg	<0.04	10/06/1994	tmm	46	103	8080 (1)
PCB-1242	<1.7	ELV	mg/kg	<0.04	10/06/1994	tmm	46	103	8080 (1)
PCB-1248	<1.7	ELV	mg/kg	<0.04	10/06/1994	tmm	46	103	8080 (1)
PCB-1254	<1.7	ELV	mg/kg	<0.04	10/06/1994	tmm	46	103	8080 (1)
PCB-1260	2.1		mg/kg	<0.04	10/06/1994	tmm	46	103	8080 (1)
Decachlorobiphenyl	240		mg/kg	<0.04	10/07/1994	tmm	46	103	8080 (1)
2,4,5,6-TCMX (Surr)	76		%	NA	10/06/1994	tmm	46	103	8080 (1)

ELV: Elevated RL due to matrix interference for all parameter(s) for test.





NATIONAL ENVIRONMENTAL TESTING, INC.

Rockford Division
3548 35th Street
Rockford, IL 61109
Tel: (815) 874-2171
Fax: (815) 874-5622
(800) 807-2877

ANALYTICAL REPORT

Ms. Tricia Sutton
OUTBOARD MARINE CORP.
190 Seahorse Drive
Waukegan, IL 60085

10/18/1994

NET Job Number: 94.03956

Client Project ID: Ecolab PRP

<u>Analyte</u>	<u>Result</u>	<u>Flag</u>	<u>Units</u>	<u>Reporting Date</u>		<u>Analyst</u>		<u>Prep Run</u>		<u>Method Reference</u>
				<u>Limit</u>	<u>Analyzed</u>	<u>Initials</u>	<u>Batch No.</u>	<u>Batch No.</u>	<u>Batch No.</u>	
SAMPLE NO. 143878	SAMPLE DESCRIPTION Lift 1 Location #3, Composite Soil			DATE-TIME TAKEN 10/04/1994 16:50						
Solids, Total	96.2		%		10/14/1994	tch		661		160.3 (3)
PCB Non-Aqueous Extraction	complete			COMPLETE	10/05/1994	jgr	46			





NATIONAL ENVIRONMENTAL TESTING, INC.

Rockford Division
3548 35th Street
Rockford, IL 61109
Tel: (815) 874-2171
Fax: (815) 874-5622
(800) 807-2877

ANALYTICAL REPORT

Ms. Tricia Sutton
OUTBOARD MARINE CORP.
190 Seahorse Drive
Waukegan, IL 60085

10/18/1994

NET Job Number: 94.03956

Client Project ID: Ecolab PRP

Analyte	Result	Flag	Units	Reporting	Date	Analyst	Prep	Run	Method Reference
				Limit	Analyzed	Initials	Batch	Batch	
SAMPLE NO. 143878	SAMPLE DESCRIPTION Lift 1 Location #3, Composite Soil					DATE-TIME TAKEN 10/04/1994 16:50			
PCB'S NON-AQUEOUS - 8080									
PCB-1016	<160	ELV	mg/kg	<0.04	10/07/1994	tmm	46	103	8080 (1)
PCB-1221	<160	ELV	mg/kg	<0.04	10/07/1994	tmm	46	103	8080 (1)
PCB-1232	<160	ELV	mg/kg	<0.04	10/07/1994	tmm	46	103	8080 (1)
PCB-1242	<160	ELV	mg/kg	<0.04	10/07/1994	tmm	46	103	8080 (1)
PCB-1248	<160	ELV	mg/kg	<0.04	10/07/1994	tmm	46	103	8080 (1)
PCB-1254	<160	ELV	mg/kg	<0.04	10/07/1994	tmm	46	103	8080 (1)
PCB-1260	<160	ELV	mg/kg	<0.04	10/07/1994	tmm	46	103	8080 (1)
Decachlorobiphenyl	290		mg/kg	<0.04	10/07/1994	tmm	46	103	8080 (1)
2,4,5,6-TCMX (Surr)	diluted		%	NA	10/07/1994	tmm	46	103	8080 (1)

ELV: Elevated RL due to matrix interference for all parameter(s) for test.





NATIONAL ENVIRONMENTAL TESTING, INC.

Rockford Division
3548 35th Street
Rockford, IL 61109
Tel: (815) 874-2171
Fax: (815) 874-5622
(800) 807-2877

ANALYTICAL REPORT

Ms. Tricia Sutton
OUTBOARD MARINE CORP.
190 Seahorse Drive
Waukegan, IL 60085

10/18/1994

NET Job Number: 94.03956

Client Project ID: Ecolab PRP

<u>Analyte</u>	<u>Result</u>	<u>Flag</u>	<u>Units</u>	<u>Reporting Limit</u>	<u>Date Analyzed</u>	<u>Analyst Initials</u>	<u>Prep Batch No.</u>	<u>Run Batch No.</u>	<u>Method Reference</u>
SAMPLE NO. 143879	SAMPLE DESCRIPTION Lift 1 Location #4, Composite Soil			DATE-TIME TAKEN 10/04/1994 16:55					
Solids, Total	94.1		%		10/14/1994	tch		661	160.3 (3)
PCB Non-Aqueous Extraction	complete			COMPLETE	10/05/1994	jgr	46		





NATIONAL ENVIRONMENTAL TESTING, INC.

Rockford Division
3548 35th Street
Rockford, IL 61109
Tel: (815) 874-2171
Fax: (815) 874-5622
(800) 807-2877

ANALYTICAL REPORT

Ms. Tricia Sutton
OUTBOARD MARINE CORP.
190 Seahorse Drive
Waukegan, IL 60085

10/18/1994

NET Job Number: 94.03956

Client Project ID: Ecolab PRP

<u>Analyte</u>	<u>Result</u>	<u>Flag</u>	<u>Units</u>	<u>Reporting Limit</u>	<u>Date Analyzed</u>	<u>Analyst Initials</u>	<u>Prep Batch No.</u>	<u>Run Batch No.</u>	<u>Method Reference</u>
SAMPLE NO. 143879	SAMPLE DESCRIPTION Lift 1 Location #4, Composite Soil							DATE-TIME TAKEN 10/04/1994 16:55	
PCB'S NON-AQUEOUS - 8080									
PCB-1016	<18	ELV	mg/kg	<0.04	10/07/1994	tmm	46	100	8080 (1)
PCB-1221	<18	ELV	mg/kg	<0.04	10/07/1994	tmm	46	100	8080 (1)
PCB-1232	<18	ELV	mg/kg	<0.04	10/07/1994	tmm	46	100	8080 (1)
PCB-1242	<18	ELV	mg/kg	<0.04	10/07/1994	tmm	46	100	8080 (1)
PCB-1248	<18	ELV	mg/kg	<0.04	10/07/1994	tmm	46	100	8080 (1)
PCB-1254	<18	ELV	mg/kg	<0.04	10/07/1994	tmm	46	100	8080 (1)
PCB-1260	<18	ELV	mg/kg	<0.04	10/07/1994	tmm	46	100	8080 (1)
Decachlorobiphenyl	440		mg/kg	<0.04	10/12/1994	tmm	46	100	8080 (1)
2,4,5,6-TCMX (Surr)	diluted		%	NA	10/07/1994	tmm	46	100	8080 (1)

IV: Elevated RL due to matrix interference for all parameter(s) for test.





NATIONAL ENVIRONMENTAL TESTING, INC.

Rockford Division
3548 35th Street
Rockford, IL 61109
Tel: (815) 874-2171
Fax: (815) 874-5622
(800) 807-2877

ANALYTICAL REPORT

Ms. Tricia Sutton
OUTBOARD MARINE CORP.
190 Seahorse Drive
Waukegan, IL 60085

10/18/1994

NET Job Number: 94.03956

Client Project ID: Ecolab PRP

<u>Analyte</u>	<u>Result</u>	<u>Flag</u>	<u>Units</u>	<u>Reporting Limit</u>	<u>Date Analyzed</u>	<u>Analyst Initials</u>	<u>Prep Batch No.</u>	<u>Run Batch No.</u>	<u>Method Reference</u>
SAMPLE NO. 143880	SAMPLE DESCRIPTION Lift 1 Location #5, Composite Soil			DATE-TIME TAKEN 10/04/1994 17:10					
Solids, Total	81.2		%		10/14/1994	tch		661	160.3 (3)
PCB Non-Aqueous Extraction	complete			COMPLETE	10/05/1994	jgr	46		





NATIONAL ENVIRONMENTAL TESTING, INC.

Rockford Division
3548 35th Street
Rockford, IL 61109
Tel: (815) 874-2171
Fax: (815) 874-5622
(800) 807-2877

ANALYTICAL REPORT

Ms. Tricia Sutton
OUTBOARD MARINE CORP.
190 Seahorse Drive
Waukegan, IL 60085

10/18/1994

NET Job Number: 94.03956

Client Project ID: Ecolab PRP

<u>Analyte</u>	<u>Result</u>	<u>Flag</u>	<u>Units</u>	<u>Reporting</u>	<u>Date</u>	<u>Analyst</u>	<u>Prep</u>	<u>Run</u>	<u>Method Reference</u>
				<u>Limit</u>	<u>Analyzed</u>	<u>Initials</u>	<u>Batch</u>	<u>Batch</u>	
SAMPLE NO. 143880	SAMPLE DESCRIPTION Lift 1 Location #5, Composite Soil								DATE-TIME TAKEN 10/04/1994 17:10
PCB'S NON-AQUEOUS - 8080									
PCB-1016	<78	ELV	mg/kg	<0.04	10/08/1994	tmm	46	104	8080 (1)
PCB-1221	<78	ELV	mg/kg	<0.04	10/08/1994	tmm	46	104	8080 (1)
PCB-1232	<78	ELV	mg/kg	<0.04	10/08/1994	tmm	46	104	8080 (1)
PCB-1242	<78	ELV	mg/kg	<0.04	10/08/1994	tmm	46	104	8080 (1)
PCB-1248	<78	ELV	mg/kg	<0.04	10/08/1994	tmm	46	104	8080 (1)
PCB-1254	<78	ELV	mg/kg	<0.04	10/08/1994	tmm	46	104	8080 (1)
PCB-1260	<78	ELV	mg/kg	<0.04	10/08/1994	tmm	46	104	8080 (1)
Decachlorobiphenyl	100		mg/kg	<0.04	10/08/1994	tmm	46	104	8080 (1)
2,4,5,6-TCMX (Surr)	diluted		%	NA	10/08/1994	tmm	46	104	8080 (1)

ELV: Elevated RL due to matrix interference for all parameter(s) for test.





NATIONAL ENVIRONMENTAL TESTING, INC.

Rockford Division
3548 35th Street
Rockford, IL 61109
Tel: (815) 874-2171
Fax: (815) 874-5622
(800) 807-2877

ANALYTICAL REPORT

Ms. Tricia Sutton
OUTBOARD MARINE CORP.
190 Seahorse Drive
Waukegan, IL 60085

10/18/1994

NET Job Number: 94.03956

Client Project ID: Ecolab PRP

<u>Analyte</u>	<u>Result</u>	<u>Flag</u>	<u>Units</u>	<u>Reporting Limit</u>	<u>Date Analyzed</u>	<u>Analyst Initials</u>	<u>Prep Batch No.</u>	<u>Run Batch No.</u>	<u>Method Reference</u>
SAMPLE NO. 143881	SAMPLE DESCRIPTION Lift-1 Location #6, Composite Soil			DATE-TIME TAKEN 10/04/1994 17:25					
Solids, Total	80.4		%		10/14/1994	tch		661	160.3 (3)
PCB Non-Aqueous Extraction	complete			COMPLETE	10/05/1994	jgr	46		





NATIONAL ENVIRONMENTAL TESTING, INC.

Rockford Division
3548 35th Street
Rockford, IL 61109
Tel: (815) 874-2171
Fax: (815) 874-5622
(800) 807-2877

ANALYTICAL REPORT

Ms. Tricia Sutton
OUTBOARD MARINE CORP.
190 Seahorse Drive
Waukegan, IL 60085

10/18/1994

NET Job Number: 94.03956

Client Project ID: Ecolab PRP

<u>Analyte</u>	<u>Result</u>	<u>Flag</u>	<u>Units</u>	<u>Reporting Limit</u>	<u>Date Analyzed</u>	<u>Analyst Initials</u>	<u>Prep Batch No.</u>	<u>Run Batch No.</u>	<u>Method Reference</u>
SAMPLE NO. 143881	SAMPLE DESCRIPTION Lift 1 Location #6, Composite Soil				DATE-TIME TAKEN 10/04/1994 17:25				
PCB'S NON-AQUEOUS - 8080									
PCB-1016	<82	ELV	mg/kg	<0.04	10/08/1994	tmm	46	104	8080 (1)
PCB-1221	<82	ELV	mg/kg	<0.04	10/08/1994	tmm	46	104	8080 (1)
PCB-1232	<82	ELV	mg/kg	<0.04	10/08/1994	tmm	46	104	8080 (1)
PCB-1242	<82	ELV	mg/kg	<0.04	10/08/1994	tmm	46	104	8080 (1)
PCB-1248	<82	ELV	mg/kg	<0.04	10/08/1994	tmm	46	104	8080 (1)
PCB-1254	<82	ELV	mg/kg	<0.04	10/08/1994	tmm	46	104	8080 (1)
PCB-1260	<82	ELV	mg/kg	<0.04	10/08/1994	tmm	46	104	8080 (1)
Decachlorobiphenyl	93		mg/kg	<0.04	10/08/1994	tmm	46	104	8080 (1)
2,4,5,6-TCMX (Surr)	diluted		%	NA	10/08/1994	tmm	46	104	8080 (1)

ELV: Elevated RL due to matrix interference for all parameter(s) for test.





NATIONAL
ENVIRONMENTAL
TESTING, INC.

Rockford Division
3548 35th Street
Rockford, IL 61109
Tel: (815) 874-2171
Fax: (815) 874-5622
(800) 807-2877

ANALYTICAL REPORT

Ms. Tricia Sutton
OUTBOARD MARINE CORP.
190 Seahorse Drive
Waukegan, IL 60085

10/18/1994

NET Job Number: 94.03956

Client Project ID: Ecolab PRP

<u>Analyte</u>	<u>Result</u>	<u>Flag</u>	<u>Units</u>	<u>Reporting</u>	<u>Date</u>	<u>Analyst</u>	<u>Prep</u>	<u>Run</u>	<u>Batch</u>	<u>Batch</u>	<u>Method Reference</u>
	<u>Limit</u>	<u>Analyzed</u>	<u>Initials</u>	<u>No.</u>	<u>No.</u>						
SAMPLE NO.	SAMPLE DESCRIPTION					DATE-TIME TAKEN					
143882	Lift 1 Location #7, Composite Soil					10/04/1994 17:28					
Solids, Total	85.2		%		10/14/1994	tch			661		160.3 (3)
PCB Non-Aqueous Extraction	complete			COMPLETE	10/05/1994	jgr			46		





NATIONAL ENVIRONMENTAL TESTING, INC.

Rockford Division
3548 35th Street
Rockford, IL 61109
Tel: (815) 874-2171
Fax: (815) 874-5622
(800) 807-2877

ANALYTICAL REPORT

Ms. Tricia Sutton
OUTBOARD MARINE CORP.
190 Seahorse Drive
Waukegan, IL 60085

10/18/1994

NET Job Number: 94.03956

Client Project ID: Ecolab PRP

<u>Analyte</u>	<u>Result</u>	<u>Flag</u>	<u>Units</u>	<u>Reporting Date</u>		<u>Analyst</u>	<u>Prep Run</u>		<u>Method Reference</u>	
				<u>Limit</u>	<u>Analyzed</u>		<u>Batch</u>	<u>Batch</u>		
<u>SAMPLE NO.</u>	<u>SAMPLE DESCRIPTION</u>						<u>DATE-TIME TAKEN</u>			
143882	Lift 1 Location #7, Composite Soil						10/04/1994 17:28			
PCB'S NON-AQUEOUS - 8080										
PCB-1016	<78	ELV	mg/kg	<0.04	10/08/1994	tmm	46	104	8080 (1)	
PCB-1221	<78	ELV	mg/kg	<0.04	10/08/1994	tmm	46	104	8080 (1)	
PCB-1232	<78	ELV	mg/kg	<0.04	10/08/1994	tmm	46	104	8080 (1)	
PCB-1242	<78	ELV	mg/kg	<0.04	10/08/1994	tmm	46	104	8080 (1)	
PCB-1248	<78	ELV	mg/kg	<0.04	10/08/1994	tmm	46	104	8080 (1)	
PCB-1254	<78	ELV	mg/kg	<0.04	10/08/1994	tmm	46	104	8080 (1)	
PCB-1260	<78	ELV	mg/kg	<0.04	10/08/1994	tmm	46	104	8080 (1)	
Decachlorobiphenyl	73		mg/kg	<0.04	10/08/1994	tmm	46	104	8080 (1)	
2,4,5,6-TCMX (Surr)	diluted		%	NA	10/08/1994	tmm	46	104	8080 (1)	

ELV: Elevated RL due to matrix interference for all parameter(s) for test.





NATIONAL ENVIRONMENTAL TESTING, INC.

Rockford Division
3548 35th Street
Rockford, IL 61109
Tel: (815) 874-2171
Fax: (815) 874-5622
(800) 807-2877

ANALYTICAL REPORT

Ms. Tricia Sutton
OUTBOARD MARINE CORP.
190 Seahorse Drive
Waukegan, IL 60085

10/18/1994

NET Job Number: 94.03956

Client Project ID: Ecolab PRP

<u>Analyte</u>	<u>Result</u>	<u>Flag</u>	<u>Units</u>	<u>Reporting Limit</u>	<u>Date Analyzed</u>	<u>Analyst Initials</u>	<u>Prep Batch No.</u>	<u>Run Batch No.</u>	<u>Method Reference</u>
SAMPLE NO. 143883	SAMPLE DESCRIPTION Lift 1 Location #8, Composite Soil							DATE-TIME TAKEN 10/04/1994 17:43	
Solids, Total	86.6		%		10/14/1994	tch		661	160.3 (3)
PCB Non-Aqueous Extraction	complete			COMPLETE	10/05/1994	jgr	46		





NATIONAL
ENVIRONMENTAL
TESTING, INC.

Rockford Division
3548 35th Street
Rockford, IL 61109
Tel: (815) 874-2171
Fax: (815) 874-5622
(800) 807-2877

ANALYTICAL REPORT

Ms. Tricia Sutton
OUTBOARD MARINE CORP.
190 Seahorse Drive
Waukegan, IL 60085

10/18/1994

NET Job Number: 94.03956

Client Project ID: Ecolab PRP

<u>Analyte</u>	<u>Result</u>	<u>Flag</u>	<u>Units</u>	<u>Reporting Limit</u>	<u>Date Analyzed</u>	<u>Analyst Initials</u>	<u>Prep Batch No.</u>	<u>Run Batch No.</u>	<u>Method Reference</u>
SAMPLE NO. 143883	SAMPLE DESCRIPTION Lift 1 Location #8, Composite Soil							DATE-TIME TAKEN 10/04/1994 17:43	
PCB'S NON-AQUEOUS - 8080									
PCB-1016	<190	ELV	mg/kg	<0.04	10/08/1994	tmm	46	104	8080 (1)
PCB-1221	<190	ELV	mg/kg	<0.04	10/08/1994	tmm	46	104	8080 (1)
PCB-1232	<190	ELV	mg/kg	<0.04	10/08/1994	tmm	46	104	8080 (1)
PCB-1242	<190	ELV	mg/kg	<0.04	10/08/1994	tmm	46	104	8080 (1)
PCB-1248	<190	ELV	mg/kg	<0.04	10/08/1994	tmm	46	104	8080 (1)
PCB-1254	<190	ELV	mg/kg	<0.04	10/08/1994	tmm	46	104	8080 (1)
PCB-1260	<190	ELV	mg/kg	<0.04	10/08/1994	tmm	46	104	8080 (1)
Decachlorobiphenyl	270		mg/kg	<0.04	10/08/1994	tmm	46	104	8080 (1)
2,4,5,6-TCMX (Surr)	diluted		%	NA	10/08/1994	tmm	46	104	8080 (1)

LV: Elevated RL due to matrix interference for all parameter(s) for test.





NATIONAL ENVIRONMENTAL TESTING, INC.

Rockford Division
3548 35th Street
Rockford, IL 61109
Tel: (815) 874-2171
Fax: (815) 874-5622
(800) 807-2877

ANALYTICAL REPORT

Ms. Tricia Sutton
OUTBOARD MARINE CORP.
190 Seahorse Drive
Waukegan, IL 60085

10/18/1994

NET Job Number: 94.03956

Client Project ID: Ecolab PRP

<u>Analyte</u>	<u>Result</u>	<u>Flag</u>	<u>Units</u>	<u>Reporting</u>	<u>Date</u>	<u>Analyst</u>	<u>Prep</u>	<u>Run</u>	<u>Method Reference</u>
				<u>Limit</u>	<u>Analyzed</u>	<u>Initials</u>	<u>Batch</u>	<u>Batch</u>	
SAMPLE NO. 143884	SAMPLE DESCRIPTION Lift 1 Location #8 DUP, Comp. Soil			DATE-TIME TAKEN 10/04/1994 17:43					
Solids, Total	84.7		%		10/14/1994	tch		661	160.3 (3)
PCB Non-Aqueous Extraction	complete			COMPLETE	10/05/1994	jgr		46	





NATIONAL ENVIRONMENTAL TESTING, INC.

Rockford Division
3548 35th Street
Rockford, IL 61109
Tel: (815) 874-2171
Fax: (815) 874-5622
(800) 807-2877

ANALYTICAL REPORT

Ms. Tricia Sutton
OUTBOARD MARINE CORP.
190 Seahorse Drive
Waukegan, IL 60085

10/18/1994

NET Job Number: 94.03956

Client Project ID: Ecolab PRP

<u>Analyte</u>	<u>Result</u>	<u>Flag</u>	<u>Units</u>	<u>Reporting</u>	<u>Date</u>	<u>Analyst</u>	<u>Prep</u>	<u>Run</u>	<u>Method Reference</u>	
				<u>Limit</u>	<u>Analyzed</u>	<u>Initials</u>	<u>Batch</u>	<u>Batch</u>		
SAMPLE NO.	SAMPLE DESCRIPTION						DATE-TIME TAKEN			
143884	Lift 1 Location #8 DUP, Comp. Soil						10/04/1994 17:43			
PCB'S NON-AQUEOUS - 8080										
PCB-1016	<200	ELV	mg/kg	<0.04	10/07/1994	tmm	46	100	8080 (1)	
PCB-1221	<200	ELV	mg/kg	<0.04	10/07/1994	tmm	46	100	8080 (1)	
PCB-1232	<200	ELV	mg/kg	<0.04	10/07/1994	tmm	46	100	8080 (1)	
PCB-1242	<200	ELV	mg/kg	<0.04	10/07/1994	tmm	46	100	8080 (1)	
PCB-1248	<200	ELV	mg/kg	<0.04	10/07/1994	tmm	46	100	8080 (1)	
PCB-1254	<200	ELV	mg/kg	<0.04	10/07/1994	tmm	46	100	8080 (1)	
PCB-1260	<200	ELV	mg/kg	<0.04	10/07/1994	tmm	46	100	8080 (1)	
Decachlorobiphenyl	450		mg/kg	<0.04	10/12/1994	tmm	46	100	8080 (1)	
2,4,5,6-TCMX (Surr)	diluted		%	NA	10/07/1994	tmm	46	100	8080 (1)	

ELV: Elevated RL due to matrix interference for all parameter(s) for test.





NATIONAL ENVIRONMENTAL TESTING, INC.

Rockford Division
3548 35th Street
Rockford, IL 61109
Tel: (815) 874-2171
Fax: (815) 874-5622
(800) 807-2877

ANALYTICAL REPORT

Ms. Tricia Sutton
OUTBOARD MARINE CORP.
190 Seahorse Drive
Waukegan, IL 60085

10/18/1994

NET Job Number: 94.03956

Client Project ID: Ecolab PRP

<u>Analyte</u>	<u>Result</u>	<u>Flag</u>	<u>Units</u>	<u>Reporting</u>	<u>Date</u>	<u>Analyst</u>	<u>Prep</u>	<u>Run</u>	<u>Method Reference</u>
				<u>Limit</u>	<u>Analyzed</u>	<u>Initials</u>	<u>Batch</u>	<u>Batch</u>	
SAMPLE NO. 143885	SAMPLE DESCRIPTION Lift 1 Location #9, Composite Soil				DATE-TIME TAKEN 10/04/1994 17:55				
Solids, Total	81.9		%		10/14/1994	tch		661	160.3 (3)
PCB Non-Aqueous Extraction	complete			COMPLETE	10/05/1994	jgr	46		





NATIONAL ENVIRONMENTAL TESTING, INC.

Rockford Division
3548 35th Street
Rockford, IL 61109
Tel: (815) 874-2171
Fax: (815) 874-5622
(800) 807-2877

ANALYTICAL REPORT

Ms. Tricia Sutton
OUTBOARD MARINE CORP.
190 Seahorse Drive
Waukegan, IL 60085

10/18/1994

NET Job Number: 94.03956

Client Project ID: Ecolab PRP

Analyte	Result	Flag	Units	Reporting	Date	Analyst	Prep	Run	Method Reference
				Limit	Analyzed	Initials	Batch	Batch	
SAMPLE NO. 143885	SAMPLE DESCRIPTION Lift 1 Location #9, Composite Soil								DATE-TIME TAKEN 10/04/1994 17:55
PCB'S NON-AQUEOUS - 8080									
PCB-1016	<1.6	ELV	mg/kg	<0.04	10/07/1994	tmm	46	100	8080 (1)
PCB-1221	<1.6	ELV	mg/kg	<0.04	10/07/1994	tmm	46	100	8080 (1)
PCB-1232	<1.6	ELV	mg/kg	<0.04	10/07/1994	tmm	46	100	8080 (1)
PCB-1242	<1.6	ELV	mg/kg	<0.04	10/07/1994	tmm	46	100	8080 (1)
PCB-1248	<1.6	ELV	mg/kg	<0.04	10/07/1994	tmm	46	100	8080 (1)
PCB-1254	<1.6	ELV	mg/kg	<0.04	10/07/1994	tmm	46	100	8080 (1)
PCB-1260	<1.6	ELV	mg/kg	<0.04	10/07/1994	tmm	46	100	8080 (1)
Decachlorobiphenyl	3.3		mg/kg	<0.04	10/12/1994	tmm	46	100	8080 (1)
2,4,5,6-TCMX (Surr)	65		%	NA	10/07/1994	tmm	46	100	8080 (1)

ELV: Elevated RL due to matrix interference for all parameter(s) for test.





NATIONAL ENVIRONMENTAL TESTING, INC.

Rockford Division
3548 35th Street
Rockford, IL 61109
Tel: (815) 874-2171
Fax: (815) 874-5622
(800) 807-2877

ANALYTICAL REPORT

Ms. Tricia Sutton
OUTBOARD MARINE CORP.
190 Seahorse Drive
Waukegan, IL 60085

10/18/1994

NET Job Number: 94.03956

Client Project ID: Ecolab PRP

<u>Analyte</u>	<u>Result</u>	<u>Flag</u>	<u>Units</u>	<u>Reporting</u>	<u>Date</u>	<u>Analyst</u>	<u>Prep</u>	<u>Run</u>	<u>Method Reference</u>
				<u>Limit</u>	<u>Analyzed</u>	<u>Initials</u>	<u>Batch</u>	<u>Batch</u>	
SAMPLE NO. 143886	SAMPLE DESCRIPTION Lift 1 Location #10, Grab Soil				DATE-TIME TAKEN 10/04/1994 16:03				
Solids, Total	84.4		%		10/14/1994	tch		661	160.3 (3)
PCB Non-Aqueous Extraction	complete			COMPLETE	10/05/1994	jgr		46	





NATIONAL ENVIRONMENTAL TESTING, INC.

Rockford Division
3548 35th Street
Rockford, IL 61109
Tel: (815) 874-2171
Fax: (815) 874-5622
(800) 807-2877

ANALYTICAL REPORT

Ms. Tricia Sutton
OUTBOARD MARINE CORP.
190 Seahorse Drive
Waukegan, IL 60085

10/18/1994

NET Job Number: 94.03956

Client Project ID: Ecolab PRP

Analyte	Result	Flag	Units	Reporting	Date	Analyst	Prep	Run	Method Reference
				Limit	Analyzed	Initials	Batch	Batch	
SAMPLE NO. 143886	SAMPLE DESCRIPTION Lift 1 Location #10, Grab Soil				DATE-TIME TAKEN 10/04/1994 16:03				
PCB'S NON-AQUEOUS - 8080									
PCB-1016	<39	ELV	mg/kg	<0.04	10/07/1994	tmm	46	103	8080 (1)
PCB-1221	<39	ELV	mg/kg	<0.04	10/07/1994	tmm	46	103	8080 (1)
PCB-1232	<39	ELV	mg/kg	<0.04	10/07/1994	tmm	46	103	8080 (1)
PCB-1242	<39	ELV	mg/kg	<0.04	10/07/1994	tmm	46	103	8080 (1)
PCB-1248	<39	ELV	mg/kg	<0.04	10/07/1994	tmm	46	103	8080 (1)
PCB-1254	<39	ELV	mg/kg	<0.04	10/07/1994	tmm	46	103	8080 (1)
PCB-1260	<39	ELV	mg/kg	<0.04	10/07/1994	tmm	46	103	8080 (1)
Decachlorobiphenyl	65		mg/kg	<0.04	10/07/1994	tmm	46	103	8080 (1)
2,4,5,6-TCMX (Surr)	diluted		%	NA	10/07/1994	tmm	46	103	8080 (1)

ELV: Elevated RL due to matrix interference for all parameter(s) for test.





NATIONAL
ENVIRONMENTAL
TESTING, INC.

Rockford Division
3548 35th Street
Rockford, IL 61109
Tel: (815) 874-2171
Fax: (815) 874-5622
(800) 807-2877

ANALYTICAL REPORT

Ms. Tricia Sutton
OUTBOARD MARINE CORP.
190 Seahorse Drive
Waukegan, IL 60085

10/18/1994

NET Job Number: 94.03956

Client Project ID: Ecolab PRP

<u>Analyte</u>	<u>Result</u>	<u>Flag</u>	<u>Units</u>	<u>Reporting Limit</u>	<u>Date Analyzed</u>	<u>Analyst Initials</u>	<u>Prep Batch No.</u>	<u>Run Batch No.</u>	<u>Method Reference</u>
SAMPLE NO. 143887	SAMPLE DESCRIPTION Lift 1 Location #11, Grab Soil			DATE-TIME TAKEN 10/04/1994 15:00					
Solids, Total	84.5		%		10/14/1994	tch		661	160.3 (3)
PCB Non-Aqueous Extraction	complete			COMPLETE	10/06/1994	jgr	46		





NATIONAL ENVIRONMENTAL TESTING, INC.

Rockford Division
3548 35th Street
Rockford, IL 61109
Tel: (815) 874-2171
Fax: (815) 874-5622
(800) 807-2877

ANALYTICAL REPORT

Ms. Tricia Sutton
OUTBOARD MARINE CORP.
190 Seahorse Drive
Waukegan, IL 60085

10/18/1994

NET Job Number: 94.03956

Client Project ID: Ecolab PRP

<u>Analyte</u>	<u>Result</u>	<u>Flag</u>	<u>Units</u>	<u>Reporting</u>	<u>Date</u>	<u>Analyst</u>	<u>Prep</u>	<u>Run</u>	<u>Method Reference</u>
				<u>Limit</u>	<u>Analyzed</u>	<u>Initials</u>	<u>Batch</u>	<u>Batch</u>	
SAMPLE NO. 143887	SAMPLE DESCRIPTION Lift 1 Location #11, Grab Soil				DATE-TIME TAKEN 10/04/1994 15:00				
PCB'S NON-AQUEOUS - 8080									
PCB-1016	<3.6	ELV	mg/kg	<0.04	10/07/1994	tmm	46	105	8080 (1)
PCB-1221	<3.6	ELV	mg/kg	<0.04	10/07/1994	tmm	46	105	8080 (1)
PCB-1232	<3.6	ELV	mg/kg	<0.04	10/07/1994	tmm	46	105	8080 (1)
PCB-1242	<3.6	ELV	mg/kg	<0.04	10/07/1994	tmm	46	105	8080 (1)
PCB-1248	<3.6	ELV	mg/kg	<0.04	10/07/1994	tmm	46	105	8080 (1)
PCB-1254	<3.6	ELV	mg/kg	<0.04	10/07/1994	tmm	46	105	8080 (1)
PCB-1260	<3.6	ELV	mg/kg	<0.04	10/07/1994	tmm	46	105	8080 (1)
Decachlorobiphenyl	7.6		mg/kg	<0.04	10/14/1994	tmm	46	105	8080 (1)
Σ,4,5,6-TCMX (Surr)	70		%	NA	10/07/1994	tmm	46	105	8080 (1)

ELV: Elevated RL due to matrix interference for all parameter(s) for test.





NATIONAL
ENVIRONMENTAL
TESTING, INC.

Rockford Division
3548 35th Street
Rockford, IL 61109
Tel: (815) 874-2171
Fax: (815) 874-5622
(800) 807-2877

ANALYTICAL REPORT

Ms. Tricia Sutton
OUTBOARD MARINE CORP.
190 Seahorse Drive
Waukegan, IL 60085

10/18/1994

NET Job Number: 94.03956

Client Project ID: Ecolab PRP

<u>Analyte</u>	<u>Result</u>	<u>Flag</u>	<u>Units</u>	<u>Reporting Date</u>		<u>Analyst</u>	<u>Prep Run</u>		<u>Method Reference</u>
				<u>Limit</u>	<u>Analyzed</u>		<u>Batch</u>	<u>Batch</u>	
<u>SAMPLE NO.</u>	<u>SAMPLE DESCRIPTION</u>			<u>DATE-TIME TAKEN</u>					
143888	Lift 1 Location #12, Grab Soil			10/04/1994 15:07					
Solids, Total	80.0		%		10/14/1994	tch		661	160.3 (3)
CB Non-Aqueous Extraction	complete			COMPLETE	10/06/1994	jgr	46		





NATIONAL ENVIRONMENTAL TESTING, INC.

Rockford Division
3548 35th Street
Rockford, IL 61109
Tel: (815) 874-2171
Fax: (815) 874-5622
(800) 807-2877

ANALYTICAL REPORT

Ms. Tricia Sutton
OUTBOARD MARINE CORP.
190 Seahorse Drive
Waukegan, IL 60085

10/18/1994

NET Job Number: 94.03956

Client Project ID: Ecolab PRP

Analyte	Result	Flag	Units	Reporting	Date	Analyst	Prep	Run	Method Reference
				Limit	Analyzed	Initials	Batch	Batch	
SAMPLE NO.	SAMPLE DESCRIPTION								DATE-TIME TAKEN
143888	Lift 1 Location #12, Grab Soil								10/04/1994 15:07
PCB'S NON-AQUEOUS - 8080									
DB-1016	<1.1	ELV	mg/kg	<0.04	10/12/1994	tmm	46	100	8080 (1)
DB-1221	<1.1	ELV	mg/kg	<0.04	10/12/1994	tmm	46	100	8080 (1)
PCB-1232	<1.1	ELV	mg/kg	<0.04	10/12/1994	tmm	46	100	8080 (1)
DB-1242	<1.1	ELV	mg/kg	<0.04	10/12/1994	tmm	46	100	8080 (1)
DB-1248	<1.1	ELV	mg/kg	<0.04	10/12/1994	tmm	46	100	8080 (1)
PCB-1254	<1.1	ELV	mg/kg	<0.04	10/12/1994	tmm	46	100	8080 (1)
PCB-1260	<1.1	ELV	mg/kg	<0.04	10/12/1994	tmm	46	100	8080 (1)
2,3,4,5-tetrachlorobiphenyl	0.65		mg/kg	<0.04	10/12/1994	tmm	46	100	8080 (1)
4,5,6-TCMX (Surr)	57		%	NA	10/12/1994	tmm	46	100	8080 (1)

W: Elevated RL due to matrix interference for all parameter(s) for test.





NATIONAL
ENVIRONMENTAL
TESTING, INC.

Rockford Division
3548 35th Street
Rockford, IL 61109
Tel: (815) 874-2171
Fax: (815) 874-5622
(800) 807-2877

ANALYTICAL REPORT

Ms. Tricia Sutton
OUTBOARD MARINE CORP.
190 Seahorse Drive
Waukegan, IL 60085

10/18/1994

NET Job Number: 94.03956

Client Project ID: Ecolab PRP

<u>Analyte</u>	<u>Result</u>	<u>Flag</u>	<u>Units</u>	<u>Reporting Limit</u>	<u>Date Analyzed</u>	<u>Analyst Initials</u>	<u>Prep Batch No.</u>	<u>Run Batch No.</u>	<u>Method Reference</u>
SAMPLE NO. 143889	SAMPLE DESCRIPTION Lift 1 Location #13, Grab Soil			DATE-TIME TAKEN 10/04/1994 15:08					
Solids, Total	84.4	%			10/14/1994	tch		661	160.3 (3)
PCB Non-Aqueous Extraction	complete			COMPLETE	10/06/1994	jgr	46		





NATIONAL ENVIRONMENTAL TESTING, INC.

Rockford Division
3548 35th Street
Rockford, IL 61109
Tel: (815) 874-2171
Fax: (815) 874-5622
(800) 807-2877

ANALYTICAL REPORT

Ms. Tricia Sutton
OUTBOARD MARINE CORP.
190 Seahorse Drive
Waukegan, IL 60085

10/18/1994

NET Job Number: 94.03956

Client Project ID: Ecolab PRP

Analyte	Result	Flag	Units	Reporting	Date	Analyst	Prep	Run	Method Reference
				Limit	Analyzed	Initials	Batch	Batch	
SAMPLE NO. 143889	SAMPLE DESCRIPTION Lift 1 Location #13, Grab Soil				DATE-TIME TAKEN 10/04/1994 15:08				
=CB'S NON-AQUEOUS - 8080									
PCB-1016	<2.0	ELV	mg/kg	<0.04	10/12/1994	tmm	46	100	8080 (1)
PCB-1221	<2.0	ELV	mg/kg	<0.04	10/12/1994	tmm	46	100	8080 (1)
PCB-1232	<2.0	ELV	mg/kg	<0.04	10/12/1994	tmm	46	100	8080 (1)
PCB-1242	<2.0	ELV	mg/kg	<0.04	10/12/1994	tmm	46	100	8080 (1)
PCB-1248	<2.0	ELV	mg/kg	<0.04	10/12/1994	tmm	46	100	8080 (1)
PCB-1254	<2.0	ELV	mg/kg	<0.04	10/12/1994	tmm	46	100	8080 (1)
PCB-1260	<2.0	ELV	mg/kg	<0.04	10/12/1994	tmm	46	100	8080 (1)
Decachlorobiphenyl	2.6		mg/kg	<0.04	10/12/1994	tmm	46	100	8080 (1)
2,4,5,6-TCMX (Surr)	64		%	NA	10/12/1994	tmm	46	100	8080 (1)

ELV: Elevated RL due to matrix interference for all parameter(s) for test.





NATIONAL
ENVIRONMENTAL
TESTING, INC.

Rockford Division
3548 35th Street
Rockford, IL 61109
Tel: (815) 874-2171
Fax: (815) 874-5622
(800) 807-2877

ANALYTICAL REPORT

Ms. Tricia Sutton
OUTBOARD MARINE CORP.
190 Seahorse Drive
Waukegan, IL 60085

10/18/1994

NET Job Number: 94.03956

Client Project ID: Ecolab PRP

<u>Analyte</u>	<u>Result</u>	<u>Flag</u>	<u>Units</u>	<u>Reporting Limit</u>	<u>Date Analyzed</u>	<u>Analyst Initials</u>	<u>Prep Batch No.</u>	<u>Run Batch No.</u>	<u>Method Reference</u>
SAMPLE NO. 143890	SAMPLE DESCRIPTION Lift 1 Location #14, Grab Soil			DATE-TIME TAKEN 10/04/1994 15:15					
Solids, Total	80.9		%		10/14/1994	tch		661	160.3 (3)
PCB Non-Aqueous Extraction	complete			COMPLETE	10/05/1994	jgr	46		





NATIONAL ENVIRONMENTAL TESTING, INC.

Rockford Division
3548 35th Street
Rockford, IL 61109
Tel: (815) 874-2171
Fax: (815) 874-5622
(800) 807-2877

ANALYTICAL REPORT

Ms. Tricia Sutton
OUTBOARD MARINE CORP.
190 Seahorse Drive
Waukegan, IL 60085

10/18/1994

NET Job Number: 94.03956

Client Project ID: Ecolab PRP

<u>Analyte</u>	<u>Result</u>	<u>Flag</u>	<u>Units</u>	<u>Reporting Date</u>		<u>Analyst</u>	<u>Prep Run</u>		<u>Method Reference</u>
				<u>Limit</u>	<u>Analyzed</u>		<u>Batch</u>	<u>Batch</u>	
				<u>Initials</u>	<u>No.</u>	<u>No.</u>			
SAMPLE NO. 143890	SAMPLE DESCRIPTION Lift 1 Location #14, Grab Soil						DATE-TIME TAKEN 10/04/1994 15:15		
PCB'S NON-AQUEOUS - 8080									
PCB-1016	<2.0	ELV	mg/kg	<0.04	10/07/1994	tmm	46	103	8080 (1)
PCB-1221	<2.0	ELV	mg/kg	<0.04	10/07/1994	tmm	46	103	8080 (1)
PCB-1232	<2.0	ELV	mg/kg	<0.04	10/07/1994	tmm	46	103	8080 (1)
PCB-1242	<2.0	ELV	mg/kg	<0.04	10/07/1994	tmm	46	103	8080 (1)
PCB-1248	<2.0	ELV	mg/kg	<0.04	10/07/1994	tmm	46	103	8080 (1)
PCB-1254	<2.0	ELV	mg/kg	<0.04	10/07/1994	tmm	46	103	8080 (1)
PCB-1260	<2.0	ELV	mg/kg	<0.04	10/07/1994	tmm	46	103	8080 (1)
Decachlorobiphenyl	2.6		mg/kg	<0.04	10/07/1994	tmm	46	103	8080 (1)
2,4,5,6-TCMX (Surr)	77		%	NA	10/07/1994	tmm	46	103	8080 (1)

ELV: Elevated RL due to matrix interference for all parameter(s) for test.





NATIONAL ENVIRONMENTAL TESTING, INC.

Rockford Division
3548 35th Street
Rockford, IL 61109
Tel: (815) 874-2171
Fax: (815) 874-5622
(800) 807-2877

ANALYTICAL REPORT

Ms. Tricia Sutton
OUTBOARD MARINE CORP.
190 Seahorse Drive
Waukegan, IL 60085

10/18/1994

NET Job Number: 94.03956

Client Project ID: Ecolab PRP

<u>Analyte</u>	<u>Result</u>	<u>Flag</u>	<u>Units</u>	<u>Reporting</u>	<u>Date</u>	<u>Analyst</u>	<u>Prep</u>	<u>Run</u>	<u>Method Reference</u>
				<u>Limit</u>	<u>Analyzed</u>	<u>Initials</u>	<u>Batch</u>	<u>Batch</u>	
SAMPLE NO. 143891	SAMPLE DESCRIPTION Lift 1 Location #15, Grab Soil			DATE-TIME TAKEN 10/04/1994 15:20					
Solids, Total	78.0		%		10/14/1994	tch			
PCB Non-Aqueous Extraction	complete			COMPLETE	10/06/1994	jgr	661	160.3 (3)	





NATIONAL ENVIRONMENTAL TESTING, INC.

Rockford Division
3548 35th Street
Rockford, IL 61109
Tel: (815) 874-2171
Fax: (815) 874-5622
(800) 807-2877

ANALYTICAL REPORT

Ms. Tricia Sutton
OUTBOARD MARINE CORP.
190 Seahorse Drive
Waukegan, IL 60085

10/18/1994

NET Job Number: 94.03956

Client Project ID: Ecolab PRP

<u>Analyte</u>	<u>Result</u>	<u>Flag</u>	<u>Units</u>	<u>Reporting Limit</u>	<u>Date Analyzed</u>	<u>Analyst Initials</u>	<u>Prep Batch No.</u>	<u>Run Batch No.</u>	<u>Method Reference</u>
- SAMPLE NO. 143891	SAMPLE DESCRIPTION Lift 1 Location #15, Grab Soil		DATE-TIME TAKEN 10/04/1994 15:20						
PCB'S NON-AQUEOUS - 8080									
PCB-1016	<85	ELV	mg/kg	<0.04	10/12/1994	tmm	46	105	8080 (1)
PCB-1221	<85	ELV	mg/kg	<0.04	10/12/1994	tmm	46	105	8080 (1)
PCB-1232	<85	ELV	mg/kg	<0.04	10/12/1994	tmm	46	105	8080 (1)
PCB-1242	<85	ELV	mg/kg	<0.04	10/12/1994	tmm	46	105	8080 (1)
PCB-1248	<85	ELV	mg/kg	<0.04	10/12/1994	tmm	46	105	8080 (1)
PCB-1254	<85	ELV	mg/kg	<0.04	10/12/1994	tmm	46	105	8080 (1)
PCB-1260	<85	ELV	mg/kg	<0.04	10/12/1994	tmm	46	105	8080 (1)
Decachlorobiphenyl	210		mg/kg	<0.04	10/14/1994	tmm	46	105	8080 (1)
2,4,5,6-TCMX (Surr)	diluted	%		NA	10/12/1994	tmm	46	105	8080 (1)

ELV: Elevated RL due to matrix interference for all parameter(s) for test.





NATIONAL ENVIRONMENTAL TESTING, INC.

Rockford Division
3548 35th Street
Rockford, IL 61109
Tel: (815) 874-2171
Fax: (815) 874-5622
(800) 807-2877

ANALYTICAL REPORT

Ms. Tricia Sutton
OUTBOARD MARINE CORP.
190 Seahorse Drive
Waukegan, IL 60085

10/18/1994

NET Job Number: 94.03956

Client Project ID: Ecolab PRP

<u>Analyte</u>	<u>Result</u>	<u>Flag</u>	<u>Units</u>	<u>Reporting Limit</u>	<u>Date Analyzed</u>	<u>Analyst Initials</u>	<u>Prep Batch No.</u>	<u>Run Batch No.</u>	<u>Method Reference</u>
SAMPLE NO. 143892	SAMPLE DESCRIPTION Lift 1 Location #16, Grab Soil			DATE-TIME TAKEN 10/04/1994 15:50					
Solids, Total	77.2		%		10/14/1994	tch		661	160.3 (3)
PCB Non-Aqueous Extraction	complete			COMPLETE	10/05/1994	jgr	46		





NATIONAL ENVIRONMENTAL TESTING, INC.

Rockford Division
3548 35th Street
Rockford, IL 61109
Tel: (815) 874-2171
Fax: (815) 874-5622
(800) 807-2877

ANALYTICAL REPORT

Ms. Tricia Sutton
OUTBOARD MARINE CORP.
190 Seahorse Drive
Waukegan, IL 60085

10/18/1994

NET Job Number: 94.03956

Client Project ID: Ecolab PRP

analyte	Result	Flag	Units	Reporting	Date	Analyst	Prep	Run	Method	Reference
				Limit	Analyzed	Initials	Batch	Batch		
SAMPLE NO. 143892	SAMPLE DESCRIPTION Lift 1 Location #16, Grab Soil				DATE-TIME TAKEN 10/04/1994 15:50					
PCB'S NON-AQUEOUS - 8080										
PCB-1016	<220	ELV	mg/kg	<0.04	10/07/1994	tmm	46	103	8080	(1)
PCB-1221	<220	ELV	mg/kg	<0.04	10/07/1994	tmm	46	103	8080	(1)
PCB-1232	<220	ELV	mg/kg	<0.04	10/07/1994	tmm	46	103	8080	(1)
PCB-1242	<220	ELV	mg/kg	<0.04	10/07/1994	tmm	46	103	8080	(1)
PCB-1248	<220	ELV	mg/kg	<0.04	10/07/1994	tmm	46	103	8080	(1)
PCB-1254	<220	ELV	mg/kg	<0.04	10/07/1994	tmm	46	103	8080	(1)
PCB-1260	<220	ELV	mg/kg	<0.04	10/07/1994	tmm	46	103	8080	(1)
Decachlorobiphenyl ,4,5,6-TCMX (Surr)	350		mg/kg	<0.04	10/07/1994	tmm	46	103	8080	(1)
	diluted		%	NA	10/07/1994	tmm	46	103	8080	(1)

ELV: Elevated RL due to matrix interference for all parameter(s) for test.





NATIONAL
ENVIRONMENTAL
TESTING, INC.

Rockford Division
3548 35th Street
Rockford, IL 61109
Tel: (815) 874-2171
Fax: (815) 874-5622
(800) 807-2877

METHOD REFERENCES

The abbreviations and references listed below have been adopted by NET as standard conventions and are used throughout this report:

- (1) Method reference from EPA SW-846 "Test Methods for Evaluating Solid Waste, Physical/Chemical Methods."
- (2) Method reference from ASTM, "American Society for Testing Materials."
- (3) Method reference from EPA "Methods for Chemical Analysis of Waters and Wastes."
- (4) Method reference from "Standard Methods for the Examination of Water and Wastewater."
- (5) Method reference from EPA "Methods for the Determination of Organic Compounds in Drinking Water."
- (6) EPA 40 CFR, Part 763 Appendix A to Subpart F - PLM
- (7) "Orion Guide to Water and Wastewater Analysis." Form WeWWG/5880
- (8) Internal Method
- (9) SIM = Selective Ion Monitoring





NATIONAL
ENVIRONMENTAL
TESTING, INC.

Rockford Division
3548 35th Street
Rockford, IL 61109
Tel: (815) 874-2171
Fax: (815) 874-5622
(800) 807-2877

QUALITY CONTROL REPORT
CONTINUING CALIBRATION VERIFICATION

Ms. Tricia Sutton
OUTBOARD MARINE CORP.
190 Seahorse Drive
Waukegan, IL 60085

10/18/1994

NET Job Number: 94.03956

<u>Analyte</u>	<u>Prep</u> <u>Batch</u> <u>No.</u>	<u>Run</u> <u>Batch</u> <u>No.</u>	<u>CCV</u> <u>True</u> <u>Value</u>	<u>Units</u>	<u>CCV</u> <u>Conc</u> <u>Found</u>	<u>CCV</u> <u>%</u> <u>Rec</u>	<u>Flag</u>	<u>Date</u> <u>Analyzed</u>
PCB'S NON-AQUEOUS - 8080								
PCB-1242		103	500	ug/L	481	96		10/07/1994
PCB-1260		103	500	ug/L	478	96		10/07/1994
Decachlorobiphenyl		103	100	ug/L	98	98		10/07/1994
2,4,5,6-TCMX (Surr)		103	100	%	101	101		10/07/1994





NATIONAL
ENVIRONMENTAL
TESTING, INC.

Rockford Division
3548 35th Street
Rockford, IL 61109
Tel: (815) 874-2171
Fax: (815) 874-5622
(800) 807-2877

QUALITY CONTROL REPORT
CONTINUING CALIBRATION VERIFICATION

Ms. Tricia Sutton
OUTBOARD MARINE CORP.
190 Seahorse Drive
Waukegan, IL 60085

10/18/1994

NET Job Number: 94.03956

<u>Analyte</u>	<u>Prep Batch No.</u>	<u>Run Batch No.</u>	<u>CCV True Value</u>	<u>Units</u>	<u>CCV Conc Found</u>	<u>CCV %</u>	<u>Flag</u>	<u>Date Analyzed</u>
PCB'S NON-AQUEOUS - 8080								
PCB-1242		104	500	ug/L	508	102		10/08/1994
PCB-1260		104	500	ug/L	483	97		10/08/1994
Decachlorobiphenyl		104	100	ug/L	102	102		10/08/1994
2,4,5,6-TCMX (Surr)		104	100	%	106	106		10/08/1994





NATIONAL
ENVIRONMENTAL
TESTING, INC.

Rockford Division
3548 35th Street
Rockford, IL 61109
Tel: (815) 874-2171
Fax: (815) 874-5622
(800) 807-2877

QUALITY CONTROL REPORT BLANKS

Ms. Tricia Sutton
OUTBOARD MARINE CORP.
190 Seahorse Drive
Waukegan, IL 60085

10/18/1994

NET Job Number: 94.03956

<u>Analyte</u>	<u>Prep Batch No.</u>	<u>Run Batch No.</u>	<u>Blank Value</u>	<u>Flag</u>	<u>Units</u>	<u>Reporting Limit</u>	<u>Date Analyzed</u>
PCB'S NON-AQUEOUS - 8080							
PCB-1016	46	103	<40		ug/kg	<40	10/07/1994
PCB-1221	46	103	<40		ug/kg	<40	10/07/1994
PCB-1232	46	103	<40		ug/kg	<40	10/07/1994
PCB-1242	46	103	<40		ug/kg	<40	10/07/1994
PCB-1248	46	103	<40		ug/kg	<40	10/07/1994
PCB-1254	46	103	<40		ug/kg	<40	10/07/1994
PCB-1260	46	103	<40		ug/kg	<40	10/07/1994
Decachlorobiphenyl	46	103	<40		ug/kg	<40	10/07/1994
2,4,5,6-TCMX (Surr)	46	103	90		%	NA	10/07/1994





NATIONAL ENVIRONMENTAL TESTING, INC.

Rockford Division
3548 35th Street
Rockford, IL 61109
Tel: (815) 874-2171
Fax: (815) 874-5622
(800) 807-2877

QUALITY CONTROL REPORT BLANKS

Ms. Tricia Sutton
OUTBOARD MARINE CORP.
190 Seahorse Drive
Waukegan, IL 60085

10/18/1994

NET Job Number: 94.03956

<u>Analyte</u>	<u>Prep Batch No.</u>	<u>Run Batch No.</u>	<u>Blank Value</u>	<u>Flag</u>	<u>Units</u>	<u>Reporting Limit</u>	<u>Date Analyzed</u>
PCB'S NON-AQUEOUS - 8080							
PCB-1016	46	103	<40		ug/kg	<40	10/07/1994
PCB-1221	46	103	<40		ug/kg	<40	10/07/1994
PCB-1232	46	103	<40		ug/kg	<40	10/07/1994
PCB-1242	46	103	<40		ug/kg	<40	10/07/1994
PCB-1248	46	103	<40		ug/kg	<40	10/07/1994
PCB-1254	46	103	<40		ug/kg	<40	10/07/1994
PCB-1260	46	103	<40		ug/kg	<40	10/07/1994
Decachlorobiphenyl	46	103	<40		ug/kg	<40	10/07/1994
2,4,5,6-TCMX (Surr)	46	103	71		%	NA	10/07/1994





NATIONAL
ENVIRONMENTAL
TESTING, INC.

Rockford Division
3548 35th Street
Rockford, IL 61109
Tel: (815) 874-2171
Fax: (815) 874-5622
(800) 807-2877

**QUALITY CONTROL REPORT
LABORATORY CONTROL STANDARD**

Ms. Tricia Sutton
OUTBOARD MARINE CORP.
190 Seahorse Drive
Waukegan, IL 60085

10/18/1994

NET Job Number: 94.03956

<u>Analyte</u>	<u>Prep Batch No.</u>	<u>Run Batch No.</u>	<u>LCS True Conc</u>	<u>Units</u>	<u>LCS Conc Found</u>	<u>LCS % Rec.</u>	<u>Flag</u>	<u>Date Analyzed</u>
PCB'S NON-AQUEOUS - 8080								
PCB-1016	46	103	0.0	ug/L	na	0		10/12/1994
PCB-1221	46	103	0.0	ug/L	na	0		10/12/1994
PCB-1232	46	103	0.0	ug/L	na	0		10/12/1994
PCB-1242	46	103	500	ug/L	469	94		10/12/1994
PCB-1248	46	103	0.0	ug/L	na	0		10/12/1994
PCB-1254	46	103	0.0	ug/L	na	0		10/12/1994
PCB-1260	46	103	500	ug/L	427	85		10/12/1994
Decachlorobiphenyl	46	103	500	ug/L	438	88		10/12/1994
2,4,5,6-TCMX (Surr)	46	103	100	%	70	70		10/12/1994





NATIONAL
ENVIRONMENTAL
TESTING, INC.

Rockford Division
3548 35th Street
Rockford, IL 61109
Tel: (815) 874-2171
Fax: (815) 874-5622
(800) 807-2877

**QUALITY CONTROL REPORT
LABORATORY CONTROL STANDARD**

Ms. Tricia Sutton
OUTBOARD MARINE CORP.
190 Seahorse Drive
Waukegan, IL 60085

10/18/1994

NET Job Number: 94.03956

<u>Analyte</u>	<u>Prep</u> <u>Batch</u> <u>No.</u>	<u>Run</u> <u>Batch</u> <u>No.</u>	<u>LCS</u> <u>True</u> <u>Conc</u>	<u>Units</u>	<u>LCS</u> <u>Conc</u> <u>Found</u>	<u>LCS</u> <u>%</u> <u>Rec.</u>	<u>Flag</u>	<u>Date</u> <u>Analyzed</u>
----------------	---	--	--	--------------	---	---------------------------------------	-------------	--------------------------------

PCB'S NON-AQUEOUS - 8080





NATIONAL
ENVIRONMENTAL
TESTING, INC.

Rockford Division
3548 35th Street
Rockford, IL 61109
Tel: (815) 874-2171
Fax: (815) 874-5622
(800) 807-2877

**QUALITY CONTROL REPORT
MATRIX SPIKE/MATRIX SPIKE DUPLICATE**

Ms. Tricia Sutton
OUTBOARD MARINE CORP.
190 Seahorse Drive
Waukegan, IL 60085

10/18/1994

NET Job Number: 94.03956

<u>Analyte</u>	<u>Prep Batch No.</u>	<u>Run Batch No.</u>	<u>Conc. Spike Added</u>	<u>Units</u>	<u>Sample Result</u>	<u>Conc. MS Result</u>	<u>MS %</u>	<u>Conc. MSD Result</u>	<u>MSD %</u>	<u>RPD</u>	<u>Flag</u>	<u>Date Analyzed</u>
PCB'S NON-AQUEOUS - 8080												
PCB-1016	46	103	0	ug/kg d	<1,760	0	0	0	0	0	ELV	10/06/1994
PCB-1221	46	103	0	ug/kg d	<1,760	0	0	0	0	0	ELV	10/06/1994
PCB-1232	46	103	0	ug/kg d	<1,760	0	0	0	0	0	ELV	10/06/1994
PCB-1242	46	103	518	ug/kg d	<1,760	do		do			ELV	10/06/1994
PCB-1248	46	103	0	ug/kg d	<1,760	0	0	0	0	0	ELV	10/06/1994
PCB-1254	46	103	0	ug/kg d	<1,760	0	0	0	0	0	ELV	10/06/1994
PCB-1260	46	103	518	ug/kg d	2,180	do		do				10/06/1994





NATIONAL ENVIRONMENTAL TESTING, INC.

Rockford Division
3548 35th Street
Rockford, IL 61109
Tel: (815) 874-2171
Fax: (815) 874-5622
(800) 807-2877

QUALITY CONTROL REPORT
DUPLICATES

Ms. Tricia Sutton
OUTBOARD MARINE CORP.
190 Seahorse Drive
Waukegan, IL 60085

10/18/1994

NET Job Number: 94.03956

<u>Analyte</u>	<u>Prep Batch No.</u>	<u>Run Batch No.</u>	<u>Sample Result</u>	<u>Duplicate Sample Result</u>	<u>Units</u>	<u>RPD</u>	<u>Flag</u>	<u>Date Analyzed</u>
Solids, Total		661	84.5	84.3	%	0.2		10/14/1994
Solids, Total		661	96.5	97.3	%	0.8		10/14/1994



APPENDIX D

Manifests

Chemical Waste Management, Inc.
Emelle Facility
P.O. Box 55
Emelle, Alabama 35459

EPA ID Number: ALD000622464
(205) 652-9721 - Recordkeeping & Reporting

ECOLAB PRP COMMITTEE
10014 N WASAUKEE
MEQUON, WI 53097-3507

ACKNOWLEDGEMENT OF RECEIPT OF WASTE SHIPMENT

Generators Name.....: ECOLAB PRP COMMITTEE
Generators US EPA ID: WID988569562

Enclosed is/are your Generator Number Two copy/copies for
Alabama manifest number(s): CWMA - 603061.

This copy is to acknowledge that Chemical Waste Management, Inc., of Emelle, Alabama has received your shipment. As a requirement of 40 CFR 264.12 (b). This letter serves to inform you that this facility has the proper permits and will accept your shipment upon completion of waste analysis procedures specified in the facility's Waste Analysis Plan and as determined in the approved waste profile submitted for this/these waste(s).

As of July 11, 1988, Chemical Waste Management, Inc., Emelle Alabama (ALD000622464) is operating under an RCRA permit issued by U.S. E.P.A, Region IV and also interim status from the Alabama Department of Environmental Management, (ADEM).

DOROTHY OLIVER
RECORDKEEPING/REPORTING SUPERVISOR

10/21/94

RECEIVED
NOV 06 1994
OMC ENVIRONMENTAL
AFFAIRS DEPT



HAZARDOUS WASTE MANIFEST

(As Required By The Alabama Department of Environmental Management)

CCTW

Please print or type. (Form designed for use on elite (12-pitch) typewriter.)

Form Approved. OMB No. 2050-0039. Expires 9-30-91

UNIFORM HAZARDOUS WASTE MANIFEST		1. Generator's US EPA ID No. W I D 9 8 8 5 6 9 5 6 2 0 0 0 2 A		Manifest Document No. 00002		2. Page 1 of 1		Information in the shaded areas is not required by Federal law.			
3. Generator's Name and Mailing Address ECOLAB PRP COMMITTEE 10014 N WASAUKEE RD MEQUON WI 53097-3507						A. State Manifest Document Number CWMA 603061					
4. Generator's Phone (708) 689-5228						B. State Generator's ID					
5. Transporter 1 Company Name CHEMICAL WASTE MANAGEMENT, INC.						6. US EPA ID Number I L D 0 9 9 2 0 2 6 8 1		C. State Transporter's ID			
7. Transporter 2 Company Name Jack Gray Transport Inc.						8. US EPA ID Number I M P 0 4 2 5 3 4 8 7 5		D. Transporter's Phone (414) 255-6655			
9. Designated Facility Name and Site Address CHEMICAL WASTE MANAGEMENT, INC. Emelle Facility Alabama Highway 17 at Mile Marker 163 Emelle, Alabama 35459						10. US EPA ID Number A L D 0 0 0 6 2 2 4 6 4		E. State Transporter's ID			
								F. Transporter's Phone 219-938-7020			
								G. State Facility's ID			
								H. Facility's Phone 205/652-9721			
11. US DOT Description (Including Proper Shipping Name, Hazard Class, and ID Number)						12. Containers		13. Total Quantity		14. Unit	15. Waste No.
a. ENVIRONMENTALLY HAZARDOUS SUBSTANCE, SOLID, N.O.S. 9, UN3077, III, RQ(POLYCHLORINATED BIPHENYLS) 082395-0005 CWM Profile Number AD0133						No. Type 0 0 1 C M		10968 16000		K	PEB
b. CWM Profile Number											
c. CWM Profile Number											
d. CWM Profile Number											
J. Additional Descriptions for Materials Listed Above OUT OF SERVICE DATE: 10/4/94 BOX 249489 STATE OF GENERATION: WISCONSIN						K. Handling Codes for Wastes Listed Above a. b. c. d.					
15. Special Handling Instructions and Additional Information IN THE EVENT OF AN EMERGENCY CONTACT CHEMICAL WASTE MANAGEMENT, INC. AT 1-800-765-8713 Work Order #: Purchase Order #:											
16. GENERATOR'S CERTIFICATION: I hereby declare that the contents of this consignment are fully and accurately described above by proper shipping name and are classified, packed, marked, and labeled, and are in all respects in proper condition for transport by highway according to applicable international and national government regulations. If I am a large quantity generator, I certify that I have a program in place to reduce the volume and toxicity of waste generated to the degree I have determined to be economically practicable and that I have selected the practicable method of treatment, storage, or disposal currently available to me which minimizes the present and future threat to human health and the environment, OR, if I am a small quantity generator, I have made a good faith effort to minimize my waste generation and select the best waste management method that is available to me and that I can afford.											
Printed/Typed Name P.A. SUTTON ASST CHAIR						Signature P. Sutton			Month Day Year 11/04/94		
17. Transporter 1 Acknowledgement of Receipt of Materials											
Printed/Typed Name CLIFFORD MARFORD ORVILLE						Signature Clifford Marford			Month Day Year 11/04/94		
18. Transporter 2 Acknowledgement of Receipt of Materials											
Printed/Typed Name Randy S. Clendenning						Signature Randy S. Clendenning			Month Day Year 11/01/94		
19. Discrepancy Indication Space Corrected WT per P. Sutton, ASL 10/20/94											
20. Facility Owner or Operator: Certification of receipt of hazardous materials covered by this manifest except as noted in Item 19.											
Printed/Typed Name Cinna Gains						Signature Cinna Gains			Month Day Year 10/17/94		



Chemical Waste Management, Inc.

Emelle Facility
P.O. Box 55
Emelle, Alabama 35459-0055
205/652-9721

FEDERAL EPA ID NUMBER: ALD000622464
MANIFEST DOCUMENT NUMBER: 00002

ECOLAB PRP COMMITTEE
10014 N WASAUKEE

MEQUON, WI 53097-3507

CERTIFICATE OF DISPOSAL

Chemical Waste Management, Inc. has received PCB material from ECOLAB PRP COMMITTEE described on Alabama Hazardous Waste Manifest number CWMA 603061. Chemical Waste Management, Inc. hereby certifies that the above described material {excluding PCB liquids, if applicable} was landfilled on the 17th day of October, 1994 in compliance with State and Federal Regulations.

Under civil and criminal penalties of law for the making or submission of false or fraudulent statements or representations {18U.S.C. 1001 and 15U.S.C 2615}, I certify that the information contained in or accompanying this document is true, accurate and complete. As to the identified section{s} of this document for which I cannot personally verify truth and accuracy, I certify as the company official having supervisory responsibility for the persons who, acting under my direct instructions, made the verification that this information is true, accurate and complete.

Dorothy Oliver

Dorothy Oliver, Recordkeeping & Reporting Supervisor

10/21/94

PROFILE	QUANT.	TREATMENT CODE	DESCRIPTION
AD0133	1	S01 D80	PCB contaminated equipment or ma

Chemical Waste Management, Inc.
Emelle Facility
P.O. Box 55
Emelle, Alabama 35459

EPA ID Number: ALD000622464
(205) 652-9721 - Recordkeeping & Reporting

ECOLAB PRP COMMITTEE
10014 N WASAUKEE RD
MEQUON, WI 53097-3507

ACKNOWLEDGEMENT OF RECEIPT OF WASTE SHIPMENT

Generators Name.....: ECOLAB PRP COMMITTEE
Generators US EPA ID: WID988569562

Enclosed is/are your Generator Number Two copy/copies for
Alabama manifest number(s): CWMA - 603060.

This copy is to acknowledge that Chemical Waste Management, Inc., of Emelle, Alabama has received your shipment. As a requirement of 40 CFR 264.12 (b). This letter serves to inform you that this facility has the proper permits and will accept your shipment upon completion of waste analysis procedures specified in the facility's Waste Analysis Plan and as determined in the approved waste profile submitted for this/these waste(s).

As of July 11, 1988, Chemical Waste Management, Inc., Emelle Alabama (ALD000622464) is operating under an RCRA permit issued by U.S. E.P.A, Region IV and also interim status from the Alabama Department of Environmental Management, (ADEM).

DOROTHY OLIVER
RECORDKEEPING/REPORTING SUPERVISOR

10/21/94



HAZARDOUS WASTE MANIFEST

(As Required By The Alabama Department of Environmental Management)

CCTW

Please print or type. (Form designed for use on elite (12-pitch) typewriter.)

Form Approved. OMB No. 2050-0039. Expires 9-30-91

UNIFORM HAZARDOUS WASTE MANIFEST		1. Generator's US EPA ID No. W I D 9 8 8 5 6 9 5 6 2 0 0 0 0 3	Manifest Document No. 0 0 0 0 3	2. Page 1 of 1	Information in the shaded areas is not required by Federal law.	
3. Generator's Name and Mailing Address ECOLAB PRP COMMITTEE 10014 N WASAUKEE RD MEQUON WI 53097-3507				A. State Manifest Document Number CWMA 603060		
4. Generator's Phone (708) 689-5228				B. State Generator's ID		
5. Transporter 1 Company Name CHEMICAL WASTE MANAGEMENT, INC.		8. US EPA ID Number I L D 0 9 9 2 0 2 6 8 1		C. State Transporter's ID		
7. Transporter 2 Company Name Jack Gray Transport, Inc.		8. US EPA ID Number I N D 0 4 2 5 3 9 8 7 5		D. Transporter's Phone (414) 255-6655		
9. Designated Facility Name and Site Address CHEMICAL WASTE MANAGEMENT, INC. Emelle Facility Alabama Highway 17 at Mile Marker 163 Emelle, Alabama 35459				10. US EPA ID Number A L D 0 0 0 6 2 2 4 6 4		E. State Transporter's ID
				F. Transporter's Phone (210) 938-7020		
				G. State Facility's ID		
				H. Facility's Phone 205/652-9721		
11. US DOT Description (Including Proper Shipping Name, Hazard Class, and ID Number)		12. Containers	13. Total Quantity	14. Unit Wt/Vo	1. Waste No.	
a. ENVIRONMENTALLY HAZARDOUS SUBSTANCE, SOLID, N.O.S. 9, UN3077, III, RQ(POLYCHLORINATED BIPHENYLS) 082395-0005 CWM Profile Number AD0133		0 0 1 C M	12 7 9 3 16 0 0 0	K	PCB	
b.						
c.						
d.						
J. Additional Descriptions for Materials Listed Above OUT OF SERVICE DATE: 10/4/94 Box 249469 STATE OF GENERATION: WISCONSIN				K. Handling Codes for Wastes Listed Above a. L b. c. d.		
15. Special Handling Instructions and Additional Information IN THE EVENT OF AN EMERGENCY CONTACT CHEMICAL WASTE MANAGEMENT, INC. AT 1-800-765-8713 Work Order #: Purchase Order #:						
16. GENERATOR'S CERTIFICATION: I hereby declare that the contents of this consignment are fully and accurately described above by proper shipping name and are classified, packed, marked, and labeled, and are in all respects in proper condition for transport by highway according to applicable international and national government regulations. If I am a large quantity generator, I certify that I have a program in place to reduce the volume and toxicity of waste generated to the degree I have determined to be economically practicable and that I have selected the practicable method of treatment, storage, or disposal currently available to me which minimizes the present and future threat to human health and the environment. OR, if I am a small quantity generator, I have made a good faith effort to minimize my waste generation and select the best waste management method that is available to me and that I can afford.						
Printed/Typed Name P.A. SUTTON, ECOLAB PRP COMMITTEE		Signature P.A. Sutton		Month Day Year 11/00/99/4		
17. Transporter 1 Acknowledgement of Receipt of Materials		Signature Clifford Marford		Month Day Year 10/04/94		
18. Transporter 2 Acknowledgement of Receipt of Materials		Signature Michael J. Vick		Month Day Year 11/01/1994		
19. Discrepancy Indication Space Corrected WT per P. Sutton, ASL 10-20-94						
20. Facility Owner or Operator: Certification of receipt of hazardous materials covered by this manifest except as noted in Item 19.		Signature Anna Gains		Month Day Year 10/19/94		



Chemical Waste Management, Inc.

Emelle Facility
P.O. Box 55
Emelle, Alabama 35459-0055
205/652-9721

FEDERAL EPA ID NUMBER: ALD000622464
MANIFEST DOCUMENT NUMBER: 00003

ECOLAB PRP COMMITTEE
10014 N WASAUKEE RD

MEQUON, WI 53097-3507

CERTIFICATE OF DISPOSAL

Chemical Waste Management, Inc. has received PCB material from ECOLAB PRP COMMITTEE described on Alabama Hazardous Waste Manifest number CWMA 603060. Chemical Waste Management, Inc. hereby certifies that the above described material {excluding PCB liquids, if applicable} was landfilled on the 17th day of October, 1994 in compliance with State and Federal Regulations.

Under civil and criminal penalties of law for the making or submission of false or fraudulent statements or representations {18U.S.C. 1001 and 15U.S.C 2615}, I certify that the information contained in or accompanying this document is true, accurate and complete. As to the identified section{s} of this document for which I cannot personally verify truth and accuracy, I certify as the company official having supervisory responsibility for the persons who, acting under my direct instructions, made the verification that this information is true, accurate and complete.

Dorothy Oliver

Dorothy Oliver, Recordkeeping & Reporting Supervisor

10/21/94

PROFILE	QUANT.	TREATMENT CODE	DESCRIPTION
AD0133	1	S01 D80	PCB contaminated equipment or ma



HAZARDOUS WASTE MANIFEST

(As Required By The Alabama Department of Environmental Management)

ECTW

Please print or type. (Form designed for use on elite (12-pitch) typewriter.)

Form Approved. OMB No. 2050-0039. Expires 9-30-91

UNIFORM HAZARDOUS WASTE MANIFEST		1. Generator's US EPA ID No. W11D09181815161915161200001		Manifest Document No. 00001		2. Page 1 of 1		Information in the shaded areas is not required by Federal law.			
3. Generator's Name and Mailing Address ECOLAB PRP COMMITTEE 10014 N WASAUKEE RD MEQUON WI 53097-3507						A. State Manifest Document Number CWMA 603062					
4. Generator's Phone (708) 689-5228						B. State Generator's ID					
5. Transporter 1 Company Name CHEMICAL WASTE MANAGEMENT, INC.			6. US EPA ID Number I1L1D099202E81			C. State Transporter's ID					
7. Transporter 2 Company Name JACK BRAY TRANSPORT INC						D. Transporter's Phone (414) 255-6655					
8. US EPA ID Number JACK BRAY TRANSPORT INC WISCONSIN						E. State Transporter's ID					
9. Designated Facility Name and Site Address CHEMICAL WASTE MANAGEMENT, INC. Emelle Facility Alabama Highway 17 at Mile Marker 163 Emelle, Alabama 35459						10. US EPA ID Number ALD000622464					
						F. Transporter's Phone (205) 652-922					
						G. State Facility's ID					
						H. Facility's Phone 205/652-9721					
11. US DOT Description (Including Proper Shipping Name, Hazard Class, and ID Number)						12. Containers		13. Total Quantity		14. Unit Wt/Vol	15. Waste No.
a. ENVIRONMENTALLY HAZARDOUS SUBSTANCE, SOLID, N.O.S. 9, LA3077, 111, PD(POLYCHLORINATED BIPHENYLS) 092395-0005 CWM Profile Number AD0133						No. Type		11 514		K	PCB
b. CWM Profile Number											
c. CWM Profile Number											
d. CWM Profile Number											
J. Additional Descriptions for Materials Listed Above OUT OF SERVICE DATE: <u>10/4/94</u> Box 249125 STATE OF GENERATION: WISCONSIN						K. Handling Codes for Wastes Listed Above a. L c. b. d.					
15. Special Handling Instructions and Additional Information IN THE EVENT OF AN EMERGENCY CONTACT CHEMICAL WASTE MANAGEMENT, INC. AT 1-800-765-8713 Work Order #: Purchase Order #:											
16. GENERATOR'S CERTIFICATION: I hereby declare that the contents of this consignment are fully and accurately described above by proper shipping name and are classified, packed, marked, and labeled, and are in all respects in proper condition for transport by highway according to applicable international and national government regulations. If I am a large quantity generator, I certify that I have a program in place to reduce the volume and toxicity of waste generated to the degree I have determined to be economically practicable and that I have selected the practicable method of treatment, storage, or disposal currently available to me which minimizes the present and future threat to human health and the environment. OR, if I am a small quantity generator, I have made a good faith effort to minimize my waste generation and select the best waste management method that is available to me and that I can afford.											
Printed/Typed Name T. H. Sutton Ecolab PRP Committee				Signature [Signature]				Month Day Year 11/01/94			
17. Transporter 1 Acknowledgement of Receipt of Materials						Printed/Typed Name CLIFFORD MORFORS		Signature [Signature]		Month Day Year 10/04/94	
18. Transporter 2 Acknowledgement of Receipt of Materials						Printed/Typed Name Gary K. Vick		Signature [Signature]		Month Day Year 10/11/94	
19. Discrepancy Indication Space											
20. Facility Owner or Operator: Certification of receipt of hazardous materials covered by this manifest except as noted in Item 19.											
Printed/Typed Name Anna L...				Signature [Signature]				Month Day Year 10/11/94			

CM, DC, SHELF

***** Receipt # 325198 *****

13 10/17/94

Date/Time In 10/17/94 6:29
Load Type Rolloff
Transporter Name JACK GRAY TRANSPORT
SKAMANIA

Federal EPA ID WA2000001039
CMH Controlled Transporter
11.27 10/17/94

35140

** WEIGHT SUMMARY **
Gross 57848.00
Tare .00
Net .00
Adj. .90
Adj. Net .00

Truck Number 648-3 Trailer/Contnr #1 249125 #2 #3

Rept Doc Ln# Ln#	Document Number	Profile Sales	Profile Invoicing	Generator Customer	Cnt #	Cnt Code	Total Quan.	W DCS V Units	Sched PCB	Federal Cat	EPA Waste Status
------------------	-----------------	---------------	-------------------	--------------------	-------	----------	-------------	---------------	-----------	-------------	------------------

22 720 Gal

1	1	0000603062	AD0133	EDCLAB PRP COMMITTEE	1	CM	16000.00	K Kilogram	Y	PLFB	Undeterminable	002395-0005
				OUTBOARD MARINE CORP				P.O. Num				
				Scheduled Date 10/17/94				Time 17:00				

W. J. D. S.
BULK SOLID MATERIAL ONLY:
SAMPLED/INSPECTED
SELECT MATERIAL/NON-SELECT MATERIAL

FREE LIQUIDS DETECTED? YES / NO
WIND DISPERSAL MATERIAL? YES / NO

PHYSICAL DESCRIPTION OF WASTE: _____ SAMPLER: _____

REQUIRES TCLP PROCESSING YES / NO REQUIRES STABILIZATION YES / NO

EPA WASTE CODES: _____ LAB # _____
WATER _____ X

NET WEIGHT _____ LBS. MIX RATIO ckd _____ /WASTE _____

PORTLAND CEMENT _____ LBS. WASTE VOLUME _____ GAL. /VAT

SLURRY MATERIAL _____ MIN. WATER VOLUME _____ GAL. /VAT

MIX RATIO _____

APPROVALS: _____ DATE: _____ TIME: _____

DISPOSAL METHOD: D00 / T45-D00 (circle one) DISPOSAL METHOD (OTHER): _____

WASH PAD RELEASE: (bulk only) (signature) DENSITY: _____

SPECIAL HANDLING CHARGE YES / NO RELEASE FOR DISPOSAL BY: _____ signature