

Sager, John E - DNR

From: Rob Smith <rsmith@kuresources.com>
Sent: Monday, January 6, 2020 9:37 AM
To: Sager, John E - DNR
Subject: Koppers Superior
Attachments: sketch - fig 1 - on-property pdi soil sampling locations - Superior - 2009 Revised HHRA Addendum.pdf; FIG 1 - Soil Sampling Locations 16261B001.pdf

Follow Up Flag: Follow up
Flag Status: Flagged

John: As we discussed, attached is the figure you had asked me to develop that illustrated the nearby sample locations that were part of the site-wide RFI.

The first attachment is the original from the Beazer document that was the basis for the remediation and was in their Post Remediation Human Health Risk Assessment Report. The second is a blowup of the first attachment showing the drip pad area with our drip pad sample locations marked. As we discussed, our drip pad locations are approximate....not surveyed.

Without having gone through the iterative full database statistical evaluation that gave rise to identifying the area that required risk-based corrective action, I am not sure these adjacent sample locations will be of much help. Call or e-mail if you have any questions or concerns.

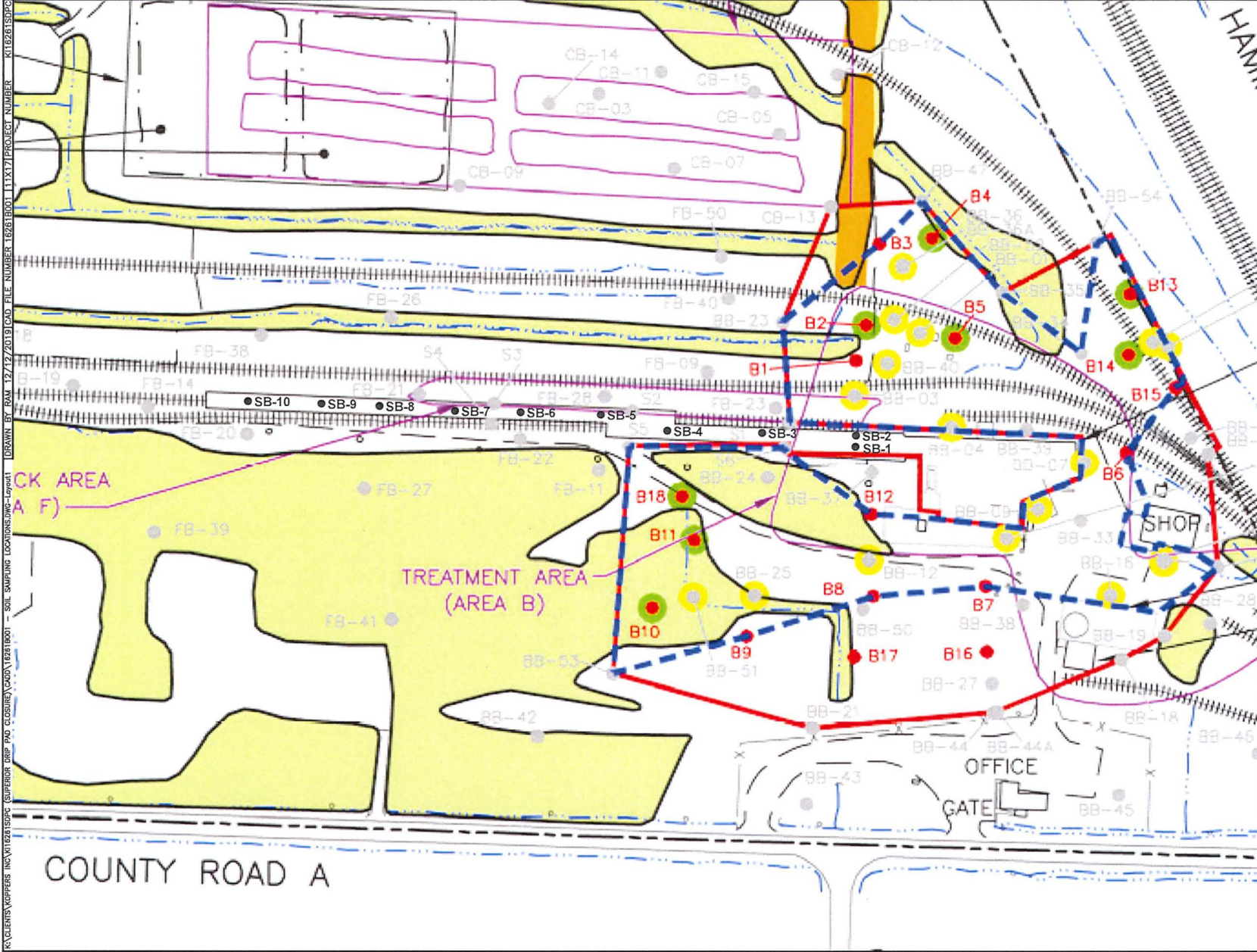
You said when last we talked that you were going to have a meeting with others regarding the approach to close the drip pad within the context of the full site...did that occur? If so, can you tell me anything about the outcome of that meeting?

Best regards.

Robert T. Smith, LRS
Vice President
Senior Environmental Scientist
KU Resources, Inc.
22 South Linden Street, Duquesne, PA 15110
412-469-9331 ext. 11
724-575-3300 - cell
rsmith@kuresources.com
www.kuresources.com



CENTRAL PENN BUSINESS JOURNAL
BEST PLACES
to work in **PA** 2019



K:\CLIENTS\KOPPERS INC\012615SDPC (SUPERIOR DRIP PAD CLOSURE)\CAD\102615ROOT - SOIL SAMPLING LOCATIONS.dwg - Layout1
 DRAWN BY: BAW 12/12/2019
 CAD FILE NUMBER: 102615ROOT
 PROJECT NUMBER: K1162615SDPC

NO.	REVISION DESCRIPTION	DATE APPROVED
	CHECKED BY: RJS 01/06/2020	APPROVED BY: RJS 01/06/2020

REFERENCE:
 IMAGE: REVISED ADDENDUM TO THE POST-REMEDIATION HUMAN HEALTH RISK ASSESSMENT REPORT DATED OCTOBER, 2009 - FIG 1 ON-PROPERTY PDI SOIL SAMPLING LOCATIONS, BY ARCADIS, SYRACUSE, NEW YORK, DATED 9/12/2008.

LEGEND
 ● DRIP PAD/SOIL BORING



PREPARED BY:

KU Resources, Inc.
 22 South Linden Street
 Duquesne, PA 15110
 412.469.9331
 412.469.9336 fax
www.kuresources.com

PREPARED FOR:
 KOPPERS INC
 SUPERIOR, WISCONSIN

PROJECT:
 SUPERIOR DRIP PAD
 TOWN OF SUPERIOR
 DOUGLAS COUNTY, WISCONSIN

DRAWING TITLE:
 SOIL SAMPLING LOCATIONS

FIGURE NO.
 1

CITY OF DULUTH, MINNESOTA, 315 W. 10TH ST., DULUTH, MN 55812
 PROJECT: SUPERIOR, WISCONSIN, KOPPERS INC. FACILITY
 DATE: 12/28/01
 DRAWN BY: J. B. BROWN
 CHECKED BY: J. B. BROWN
 PROJECT NAME: SUPERIOR, WISCONSIN, KOPPERS INC. FACILITY

