

CORRESPONDENCE/MEMORANDUM

State of Wisconsin

Date: February 8, 1994
To: File
From: Karl Roovers, GRB
Subject: Sampling, Kewaunee Marsh Spill, SW 1/4 of Sec. 7, Tn.23N.-R.25E., Town of Pierce, Kewaunee County

RECEIVED

FEB 09 1994

SOLID WASTE

File Ref:

On February 3, 1994, 8:00 a.m., I met with: Jeff Pritzl -Wildlife Mgr- Manitowoc; Tom Bahti - Wildlife Mgr - GRB; Jeff Nokes - Wisconsin Central Ltd; Mark Bergoen - STS.

I collected two samples from the area of the spill. The samples were collected from the same hole at 0-3" and from 18-24". The sample point is located 10 feet outside of the measured railroad right of way.

Sample F# 003

2-3-94, 9:00 a.m.

Location: Approx. 250 Feet East of Switch/60 Feet North of Rail Center Line

Sample Collected Below 1/2 of Ice

Description: Frozen Black Organic Soil

0-3" BGS

Sample F# 004

2-3-94, 9:16 a.m.

Location: At F# 003 Above But at 18-24" BGS

Description: Wet Black Organic Soil

18-24" BGS

The sample area was opened up with an ice spud and sample F# 003 was excavated using a clean rock pick and sample placed into the sample bottle using a clean stainless steel scoop.

Sample F# 004 was collected using a clean stainless steel auger and scooped from the auger into the sample bottle using a clean stainless steel scoop.

Disposable lab gloves were worn during sampling and were changed between samples. Chain of Custody was maintained and the samples were shipped to the SLOH on 2-3-94.

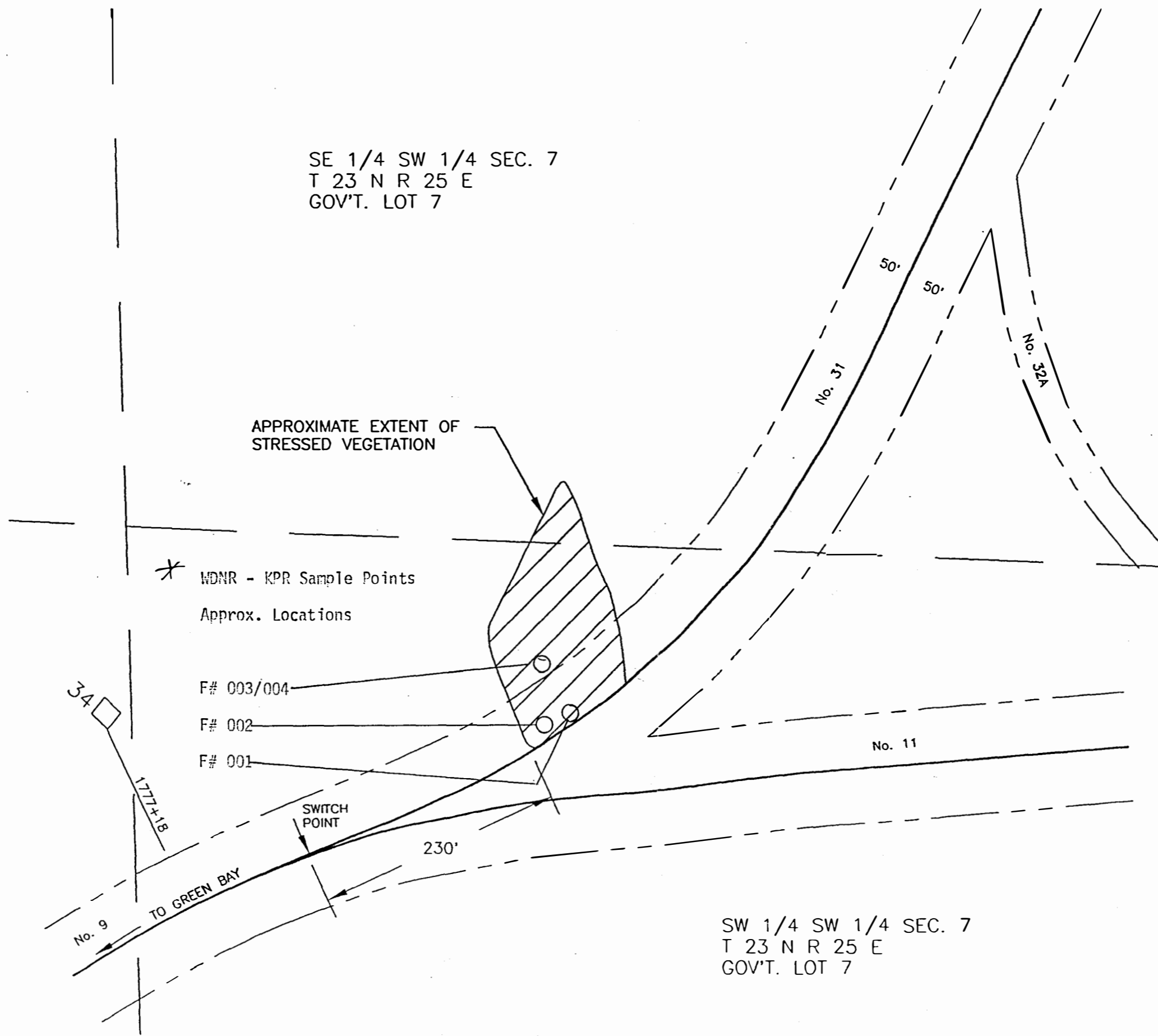
On 2-7-94, Roovers received a map of the stressed area from STS. Roovers generally agrees with the area diagramed. Department sample points are indicated on a copy of the STS map as revised by Roovers.

During the site visit Nokes advised: derailments usually occur near a switch, looked like two cars came off of the tracks (judging by area along tracks at spill area without trees), cut ties indicative of derailment, have notified Fox River Valley RR of spill.


After sampling, Bahti, Pritzl and Roovers set "No Public Entry" signs around the area. Two signs were also posted on trees in the rail right of way at Nokes' suggestion. Photos were taken of the samples and the signs.

kpr

cc: Len Polczinski, LMD
Bruce Urben, LMD
Doug Rossberg, LMD
Jeff Pritzl, Manitowoc
Tom Bahti, GRB
Day File, LMD
SW/3



* ADDED 2-7-94 ABR

DRAWN BY	D.J.M.	DATE	2-3-94
CHECKED BY		DATE	
APPROVED BY		DATE	
CAD FILE	C:\DJM\20716XF\SITE.DWG		
KEWAUNEE MARSH ARSENIC SITE LOCATION DIAGRAM			
 STS Consultants Ltd. Consulting Engineers			
STS PROJECT NO. 20716XF			
STS PROJECT FILE			
SCALE 1" = 100'			
FIGURE NO. 1			