

The following site is being submitted for inclusion into the GIS registry:

- For DNR County and Region list go to:
g:\pf\pecfa\site\gis\BRRTS County and Region Codes.xls
- To begin, click on cell to the right of; *This is a:*
- Use Tab, ↓ or Pg Down to navigate form. Print & include with file when completed.

This is a:	New Submittal
BRRTS ID (no dashes):	0268000820
Comm # (no dashes):	53146170330
County:	Waukesha
Region:	Southeast
Site name:	Krahn Brothers Oil Company
Street Address:	18930 W Lincoln Ave
City:	New Berlin
Final Closure Date	2001-01-08
Closure Conditions:	met
Off-source property contamination?	No
(If yes, attach locational data and deed information on pg. 2)	
Right-of-way contamination?	No
Contaminated media:	Groundwater
GPS Coordinates (meters in the WTM91 projection)	
Easting (X):	670781.000000000
Northing (Y):	282800.000000000
Collection Method:	Direct Location
Scale or Resolution:	1:13,837
(1:24,000 scale or finer)	("1:" and comma is default)
Prepared by:	Cheryl Nelson
Submitted by:	Cheryl Nelson

Source Property Checklist

- Final Closure Letter
- Copy of the most recent deed, which includes legal description for all properties w/ GW > NR 140 ES
- Where the legal description in the deed(s) refers to a certified survey map or recorded plat map, include those documents
- Parcel ID for all properties w/ GW > NR 140 ES
- General Location Map
- Detailed Location Map showing property boundaries, buildings, MW(s) and/or potable wells etc for properties with GW > NR 140 ES
- Latest Map(s) showing extent or outline of current GW plume (isoconcentrations)
- Map showing GW flow direction
- Latest Table of GW results
- Geologic cross section (if generated as part of the site investigation)
- Statement signed by RP certifying correctness of legal descriptions
- Updated Database

January 8, 2001

Mstrs. Herman and Mathius Krahn
Krahn Brothers Oil Co.
18385 W. Lincoln Ave.
New Berlin, WI 53146

Subject: **Case Closure** – Krahn Brothers Oil Company
18930 West Lincoln Avenue, New Berlin


COMMERCE #53146-1703-30
BRRTS # 02-68-000820

Dear Mstrs. Herman and Mathius Krahn:

As of November 7, 2000, the department has received all of the required information that was requested in the July 12, 2000 conditional closure letter. No further action is required at the above-referenced site. The case will be listed as closed in our tracking system.

Thank you for your efforts in the protection of the environment. If you have any additional questions, please do not hesitate to contact me. I can be reached at 414-220-5373 or jskinner@commerce.state.wi.us.

Sincerely,

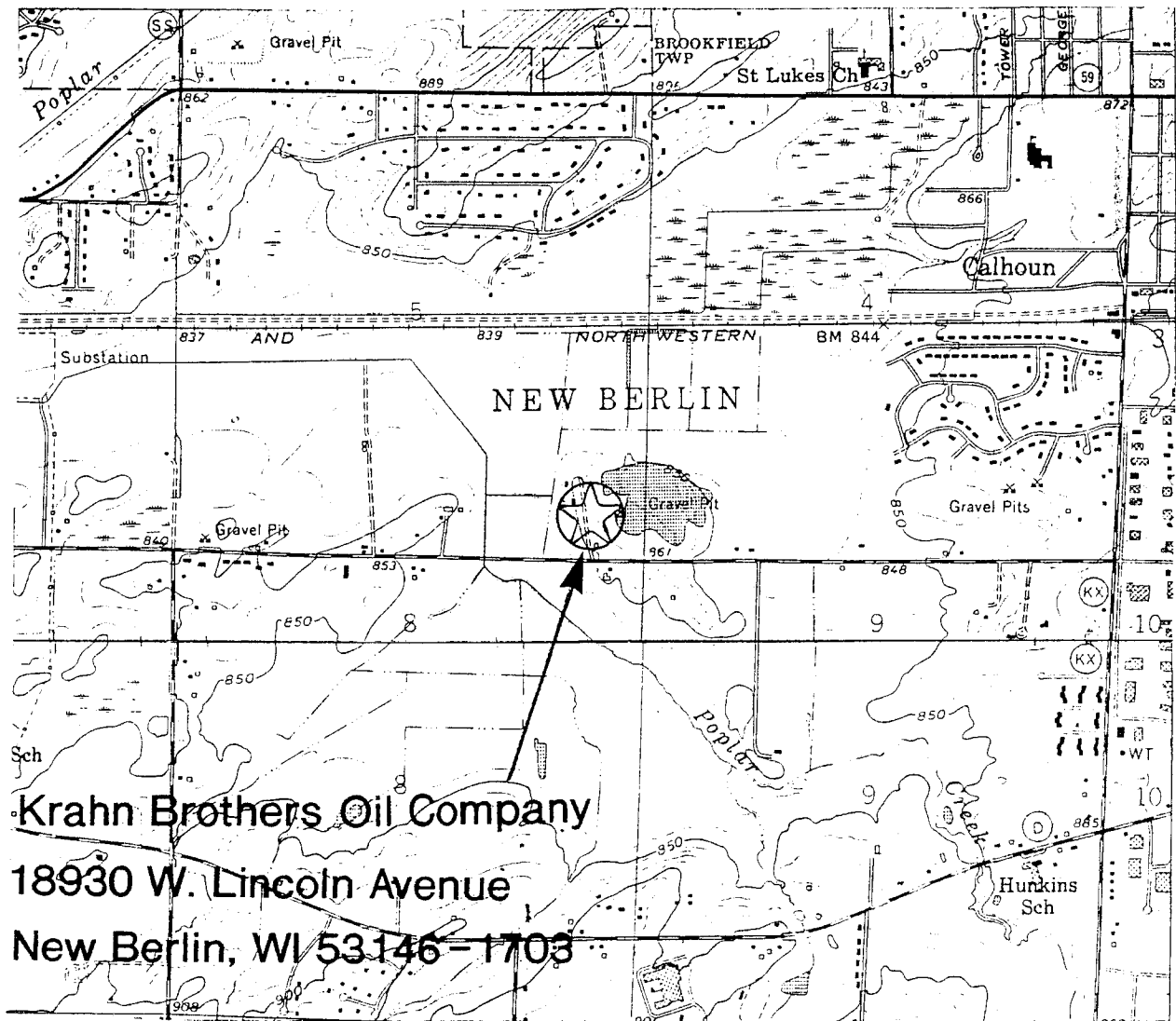

Jennifer Skinner
Hydrogeologist
PECFA Site Review Section

cc: Scott Prill, Reinhart, Boerner, Van Deuren, Norris & Rieselbach, S.C.
Case file

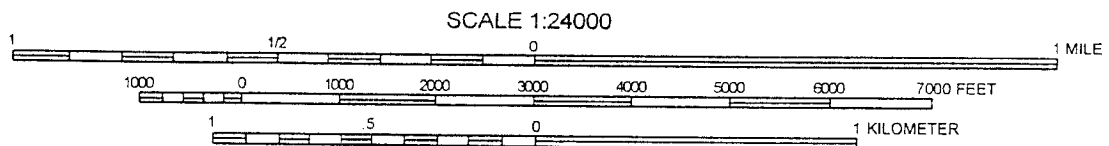
ATTACHMENT ALegal Description For
Tax Parcel No. 1172995

Part of the Southeast Quarter of Section 5, Township 6 North, Range 20 East, Town of New Berlin, Waukesha County, Wisconsin, located and bounded as follows: Commencing at a point in the South line of the Quarter-section 1552.7 feet easterly from the Southwest Corner of the Quarter-section; thence North $00^{\circ} 21' 33''$ West 280.00 feet; thence North $07^{\circ} 09' 40''$ East 534.70 feet; thence South $76^{\circ} 17'$ East 10.07 feet to the place of beginning of the boundaries of the subject land; thence North $07^{\circ} 09' 40''$ East 670.27 feet; thence North $89^{\circ} 41' 20''$ East 159.51 feet; thence South $00^{\circ} 21' 33''$ East 388.66 feet; thence South $07^{\circ} 19'$ East 351.01 feet; thence North $76^{\circ} 17'$ West 298.73 feet to the place of beginning of the boundaries, containing approximately 3.443 acres.

Ref: Warranty Deed dated August 31, 1961; Vol. 899, Page 474,
Document No. 555167.



Krahn Brothers Oil Company
18930 W. Lincoln Avenue
New Berlin, WI 53146-1703



National Geodetic Vertical Datum of 1929
 Contour Interval of 10 Feet

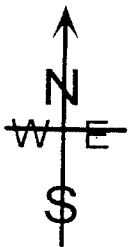


FIGURE 1
Site Location Map
and
Local Topography

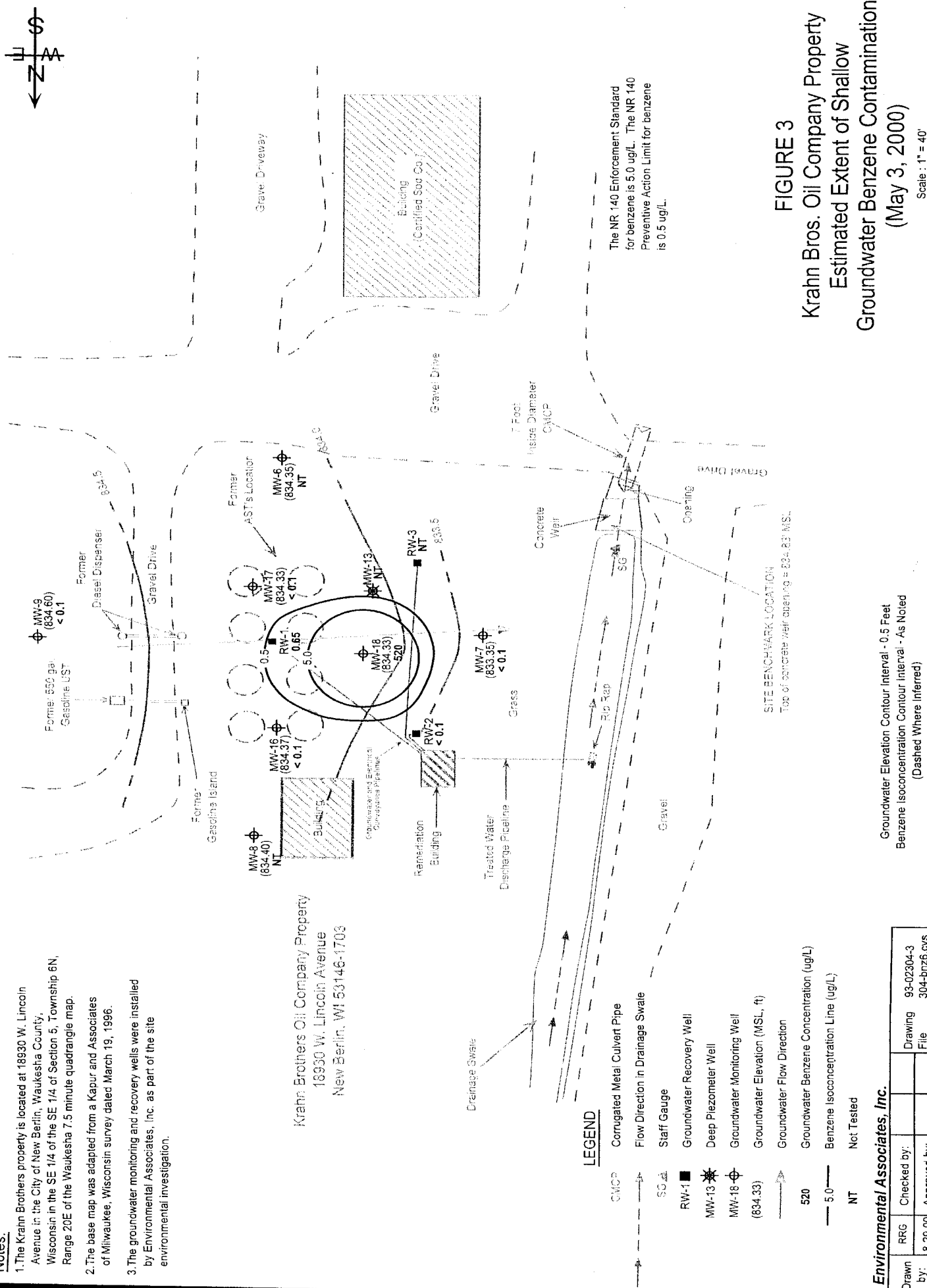
Environmental Associates, Inc.

Drawn by:	RRG	Checked by:		Drawing File	93-02304-1
	4-25-96	Approved by:			

Notes:

1. The Krahn Brothers property is located at 18930 W. Lincoln Avenue in the City of New Berlin, Waukesha County, Wisconsin in the SE 1/4 of the SE 1/4 of Section 5, Township 6N, Range 20E of the Waukesha 7.5 minute quadrangle map.
2. The base map was adapted from a Kapur and Associates of Milwaukee, Wisconsin survey dated March 19, 1996.
3. The groundwater monitoring and recovery wells were installed by Environmental Associates, Inc. as part of the site environmental investigation.

Krahn Brothers Oil Company Property
 18930 W. Lincoln Avenue
 New Berlin, WI 53146-1703



LEGEND

- CMCP
- SG
- RW-1
- MW-13
- MW-18 (834.33)
- 520
- 5.0
- NT
- Corrugated Metal Culvert Pipe
- Flow Direction in Drainage Swale
- Staff Gauge
- Groundwater Recovery Well
- Deep Piezometer Well
- Groundwater Monitoring Well
- Groundwater Elevation (MSL, ft)
- Groundwater Flow Direction
- Groundwater Benzene Concentration (ug/L)
- Benzene Isoconcentration Line (ug/L)
- Not Tested

Environmental Associates, Inc.

Drawn by:	RRG	Checked by:		Drawing File	93-02304-3
Approved by:	8-29-00	Approved by:		File	304-bnz6.cvs

Groundwater Elevation Contour Interval - 0.5 Feet
 Benzene Isoconcentration Contour Interval - As Noted (Dashed Where Inferred)

FIGURE 3
 Krahn Bros. Oil Company Property
 Estimated Extent of Shallow
 Groundwater Benzene Contamination
 (May 3, 2000)
 Scale: 1" = 40'

The NR 140 Enforcement Standard for benzene is 5.0 ug/L. The NR 140 Preventive Action Limit for benzene is 0.5 ug/L.

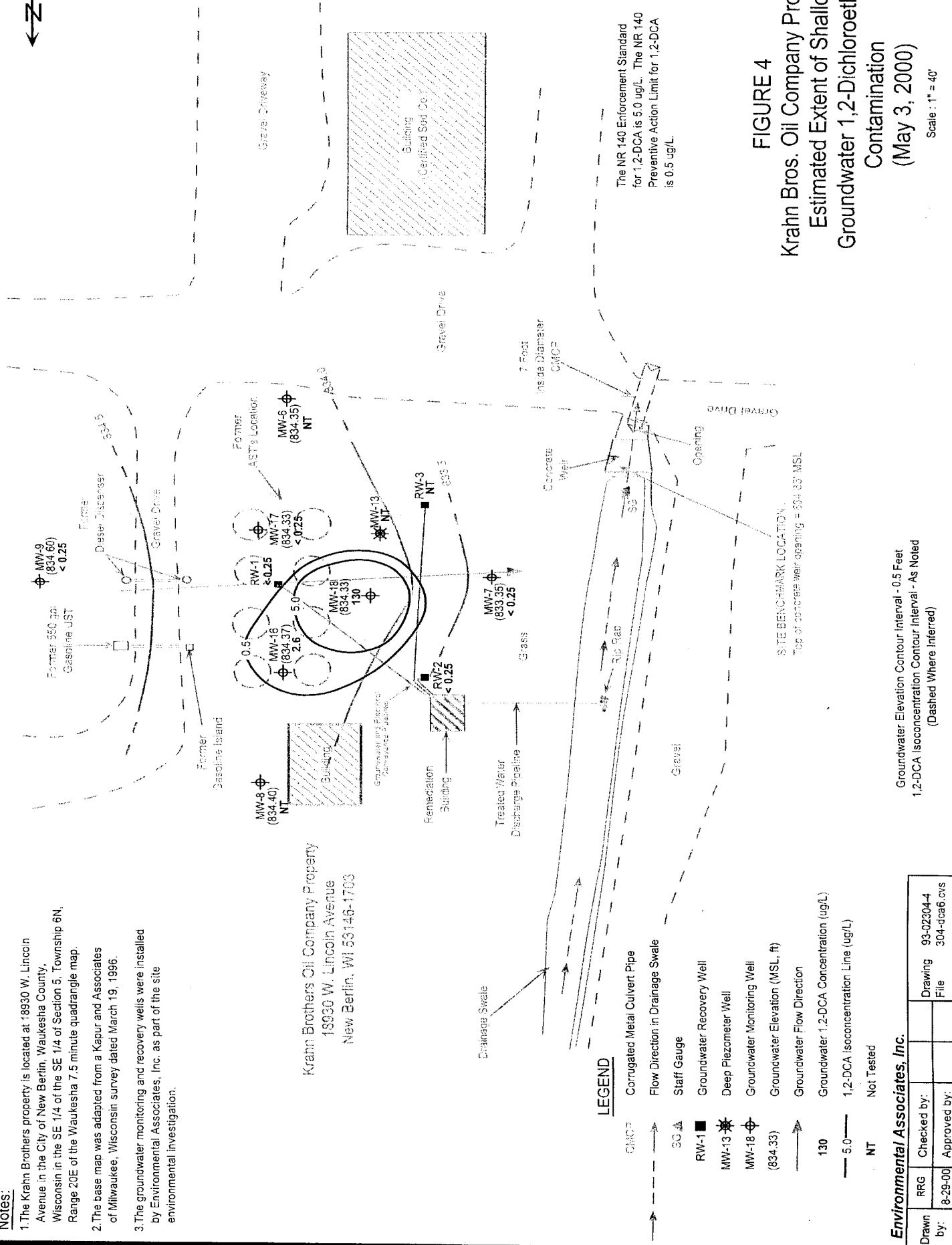
SITE BENCHMARK LOCATION
 Top of concrete well opening = 834.83 MSL



Notes:

1. The Krahn Brothers property is located at 18930 W. Lincoln Avenue in the City of New Berlin, Waukesha County, Wisconsin in the SE 1/4 of the SE 1/4 of Section 5, Township 6N, Range 20E of the Waukesha 7.5 minute quadrangle map.
2. The base map was adapted from a Kapur and Associates of Milwaukee, Wisconsin survey dated March 19, 1996.
3. The groundwater monitoring and recovery wells were installed by Environmental Associates, Inc. as part of the site environmental investigation.

Krahn Brothers Oil Company Property
 18930 W. Lincoln Avenue
 New Berlin, WI 53146-1703



The NR 140 Enforcement Standard for 1,2-DCA is 5.0 ug/L. The NR 140 Preventive Action Limit for 1,2-DCA is 0.5 ug/L.

FIGURE 4
Krahn Bros. Oil Company Property
Estimated Extent of Shallow
Groundwater 1,2-Dichloroethane
Contamination
(May 3, 2000)

Scale: 1" = 40'

LEGEND

- CMCP
- Corrugated Metal Culvert Pipe
- Flow Direction in Drainage Swale
- Staff Gauge
- RW-1 Groundwater Recovery Well
- MW-13 Deep Piezometer Well
- MW-18 Groundwater Monitoring Well
- (834.33) Groundwater Elevation (MSL, ft)
- Groundwater Flow Direction
- 130 Groundwater 1,2-DCA Concentration (ug/L)
- 5.0 1,2-DCA Isoconcentration Line (ug/L)
- NT Not Tested

Environmental Associates, Inc.

Drawn by:	RRG	Checked by:		Drawing File:	93-02304-4
by:	8-29-00	Approved by:		File:	304-dca6.cvs

Groundwater Elevation Contour Interval - 0.5 Feet
 1,2-DCA Isoconcentration Contour Interval - As Noted
 (Dashed Where Inferred)

Table 1: Summary of Groundwater Analytical Data, Krahn Brothers Oil Company, 18930 West Lincoln Avenue, New Berlin, Wisconsin

Parameter	Units	ES	PAL	Date	MW5	MW6	MW7	MW8	MW9	PZ13	MW14	MW15	MW16	MW17	MW18	RW1	RW2	RW3						
Benzene	ug/L	5	0.5	4/15/94	2200	< 0.6	< 0.6	< 0.6	< 0.6	NI	NI	NI	NI	NI	NI	NI	NI	NI						
				6/20/94	1110	< 0.6	< 0.6	< 0.6	< 0.6	< 0.6	< 0.6	< 0.6	NI	NI	NI	NI	NI	NI	NI	NI				
				2/21/95	400	< 0.6	< 0.6	< 0.6	< 0.6	< 0.6	< 0.6	< 0.6	14,000	24,000	1.6	NI	NI	NI	NI	NI	NI			
				12/19/96	AW	< 0.6	< 0.6	< 0.6	< 0.6	< 0.6	< 0.6	< 0.6	AW	AW	< 0.6	19	5000	NT	NT	NT	NT			
				3/18/97	AW	< 0.21	< 0.21	< 0.21	< 0.21	< 0.21	< 0.21	< 0.21	AW	AW	< 0.21	0.85	6000	NT	NT	NT	NT			
				6/13/97	AW	< 0.21	< 0.21	< 0.21	< 0.21	< 0.21	< 0.21	< 0.21	AW	AW	< 0.21	< 0.21	4600	NT	NT	NT	NT			
				9/10/97	AW	< 0.21	< 0.21	< 0.21	< 0.21	< 0.21	< 0.21	2.5	AW	AW	< 0.21	0.51	1000	NT	NT	NT	NT			
				1/7/98	AW	< 0.21	< 0.21	< 0.21	< 0.21	< 0.21	< 0.21	< 0.21	AW	AW	< 0.21	< 0.21	2400	NT	NT	NT	NT			
				5/26/98	AW	< 0.32	< 0.32	< 0.32	< 0.32	< 0.32	< 0.32	< 0.32	AW	AW	< 0.32	< 0.32	1400	160	0.84^	< 0.32	< 0.32			
				8/19/98	AW	< 0.32	< 0.32	< 0.32	< 0.32	< 0.32	< 0.32	< 0.32	AW	AW	< 0.32	< 0.32	1100	170	140	< 0.32	< 0.32			
				12/9/98	AW	NT	< 0.32	NT	< 0.32	NT	< 0.32	NT	AW	AW	< 0.32	< 0.32	1200	3.1	49	NT	NT			
				5/3/00	AW	NT	< 0.1	NT	< 0.1	NT	< 0.1	NT	AW	AW	< 0.1	< 0.1	520	0.65	< 0.1	NT	NT			
				Ethylbenzene	ug/L	700	140	4/15/94	< 50	< 1.0	< 1.0	< 1.0	< 1.0	NI	NI	NI	NI	NI	NI	NI	NI	NI		
								6/20/94	< 10	< 1.0	< 1.0	< 1.0	< 1.0	< 1.0	< 1.0	NI	NI	NI	NI	NI	NI	NI	NI	NI
								2/21/95	10	< 1.0	< 1.0	< 1.0	< 1.0	< 1.0	< 1.0	1400	1900	6.4	NI	NI	NI	NI	NI	NI
12/19/96	AW	< 1.0	< 1.0					< 1.0	< 1.0	< 1.0	< 1.0	AW	AW	< 1.0	1.3	< 50	NT	NT	NT	NT				
3/18/97	AW	< 0.68	< 0.68					< 0.68	< 0.68	< 0.68	< 0.68	AW	AW	< 0.68	< 0.68	< 34	NT	NT	NT	NT				
6/13/97	AW	< 0.68	< 0.68					< 0.68	< 0.68	< 0.68	< 0.68	AW	AW	< 0.68	< 0.68	12	NT	NT	NT	NT				
9/10/97	AW	< 0.68	< 0.68					< 0.68	< 0.68	< 0.68	< 0.68	AW	AW	< 0.68	< 0.68	< 14	NT	NT	NT	NT				
1/7/98	AW	< 0.68	< 0.68					< 0.68	< 0.68	< 0.68	< 0.68	AW	AW	< 0.68	< 0.68	< 6.8	NT	NT	NT	NT				
5/26/98	AW	< 0.34	< 0.34					< 0.34	< 0.34	< 0.34	< 0.34	AW	AW	< 0.34	< 0.34	< 34	16	< 0.34	< 0.34	< 0.34				
8/19/98	AW	< 0.34	< 0.34					< 0.34	< 0.34	< 0.34	< 0.34	AW	AW	< 0.34	< 0.34	< 3.4	44	6	< 0.34	< 0.34				
12/9/98	AW	NT	< 0.34					NT	< 0.34	NT	< 0.34	NT	AW	AW	< 0.34	< 0.34	6.9^	1.2	< 0.34	NT	NT			
5/3/00	AW	NT	< 0.25					NT	< 0.25	NT	< 0.25	NT	AW	AW	< 0.25	< 0.25	< 2.5	< 0.25	< 0.25	NT	NT			
Toluene	ug/L	1,000	200					4/15/94	< 50	1.1	4.6	1.9	2.7	NI	NI	NI	NI	NI	NI	NI	NI	NI		
								6/20/94	67	< 1.0	4.7	< 1.0	8.6	< 1.0	< 1.0	< 1.0	NI	NI	NI	NI	NI	NI	NI	NI
								2/21/95	57	< 1.0	< 1.0	< 1.0	< 1.0	< 1.0	< 1.0	< 1.0	16,000	27,000	2.7	NI	NI	NI	NI	NI
				12/19/96	AW	< 1.0	< 1.0	< 1.0	< 1.0	< 1.0	< 1.0	< 1.0	AW	AW	< 1.0	< 1.0	< 50	NT	NT	NT				
				3/18/97	AW	< 1.5	< 1.5	< 1.5	< 1.5	< 1.5	< 1.5	< 1.5	AW	AW	< 1.5	< 1.5	< 75	NT	NT	NT				
				6/13/97	AW	< 1.5	< 1.5	< 1.5	< 1.5	< 1.5	< 1.5	< 1.5	AW	AW	< 1.5	< 1.5	< 1.5	NT	NT	NT	NT			
				9/10/97	AW	< 1.5	< 1.5	< 1.5	< 1.5	< 1.5	< 1.5	< 1.5	AW	AW	< 1.5	< 1.5	< 2.6	NT	NT	NT				
				1/7/98	AW	< 1.5	< 1.5	< 1.5	< 1.5	< 1.5	< 1.5	< 1.5	AW	AW	< 1.5	< 1.5	< 1.5	NT	NT	NT				
				5/26/98	AW	< 0.35	< 0.35	< 0.35	< 0.35	< 0.35	< 0.35	< 0.35	AW	AW	< 0.35	< 0.35	< 0.35	< 0.35	< 0.35	< 0.35	< 0.35			
				8/19/98	AW	< 0.35	< 0.35	< 0.35	< 0.35	< 0.35	< 0.35	< 0.35	AW	AW	< 0.35	< 0.35	< 0.35	< 1.8	6.5	< 0.35	< 0.35			
				12/9/98	AW	NT	< 0.35	NT	< 0.35	NT	< 0.35	NT	AW	AW	< 0.35	< 0.35	21	< 0.35	< 0.35	NT	NT			
				5/3/00	AW	NT	< 0.1	NT	< 0.1	NT	< 0.1	NT	AW	AW	< 0.1	< 0.1	< 0.1	< 0.1	< 0.1	< 0.1	NT			

See Attached Footnotes:

Table 1: Summary of Groundwater Analytical Data, Krahn Brothers Oil Company, 18930 West Lincoln Avenue, New Berlin, Wisconsin

Parameter	Units	ES	PAL	Date	MW5	MW6	MW7	MW8	MW9	PZ13	MW14	MW15	MW16	MW17	MW18	RW1	RW2	RW3	
Total Xylenes (m/p-Xylenes + o-Xylene)																			
	ug/L	10,000	1,000	4/15/94	<50	<1.0	<1.0	<1.0	<1.0	NI	NI	NI	NI	NI	NI	NI	NI	NI	NI
				6/20/94	11	<1.0	<1.0	<1.0	<1.0	<1.0	NI	NI	NI	NI	NI	NI	NI	NI	NI
				2/21/95	19	<1.0	<1.0	<1.0	<1.0	<1.0	5600	7900	3.2	NI	NI	NI	NI	NI	NI
				12/19/96	AW	<2.0	<2.0	<2.0	<2.0	<2.0	AW	AW	<2.0	<2.0	<100	NT	NT	NT	NT
				3/18/97	AW	<1.78	<1.78	<1.78	<1.78	<1.78	AW	AW	<1.78	<1.78	<79	NT	NT	NT	NT
				6/13/97	AW	<1.78	<1.78	<1.78	<1.78	<1.78	AW	AW	<1.78	<1.78	6.4	NT	NT	NT	NT
				9/10/97	AW	<1.78	<1.78	<1.78	<1.78	<1.78	AW	AW	<1.78	<1.78	<36	NT	NT	NT	NT
				1/7/98	AW	<1.78	<1.78	<1.78	<1.78	<1.78	AW	AW	<1.78	<1.78	<17.8	NT	NT	NT	NT
				5/26/98	AW	<0.98	<0.98	<0.98	<0.98	<0.98	AW	AW	<0.98	<0.98	<0.98	<9.8	<0.98	<0.98	<0.98
				8/19/98	AW	<0.98	<0.98	<0.98	<0.98	<0.98	AW	AW	<0.98	<0.98	<0.98	20	1.1^	<0.98	<0.98
				12/9/98	AW	NT	<0.98	NT	<0.98	NT	AW	AW	<0.98	<0.98	26.1^	<0.98	<0.98	NT	NT
				5/3/00	AW	NT	<0.25	NT	<0.25	NT	AW	AW	<0.25	<0.25	<2.5	<0.25	<0.25	<0.25	NT
MTBE																			
	ug/L	60	12	4/15/94	<50	<1.0	5.9	<1.0	<1.0	NI	NI	NI	NI	NI	NI	NI	NI	NI	NI
				6/20/94	<10.0	<1.0	<1.0	1.4	<1.0	<1.0	NI	NI	NI	NI	NI	NI	NI	NI	NI
				2/21/95	<10.0	<1.0	5.7	<1.0	<1.0	<1.0	<100	<200	4.6	NI	NI	NI	NI	NI	NI
				12/19/96	AW	<1.0	<1.0	<1.0	<1.0	<1.0	AW	AW	<1.0	<1.0	<50	NT	NT	NT	NT
				3/18/97	AW	<0.21	<0.21	<0.21	<0.21	<0.21	AW	AW	2.6	<0.21	16	NT	NT	NT	NT
				6/13/97	AW	<0.21	2.2	<0.21	<0.21	<0.21	AW	AW	0.64	<0.21	56	NT	NT	NT	NT
				9/10/97	AW	<0.21	1.6	<0.21	<0.21	<0.21	AW	AW	<0.21	<0.21	8.6	NT	NT	NT	NT
				1/7/98	AW	<0.21	0.47	<0.21	<0.21	<0.21	AW	AW	<0.21	<0.21	36	NT	NT	NT	NT
				5/26/98	AW	<0.31	0.55^	<0.31	<0.31	<0.31	AW	AW	0.66^	<0.31	22	<3.1	0.43^	<0.31	
				8/19/98	AW	<0.31	0.46^	<0.31	<0.31	<0.31	AW	AW	0.33^	<0.31	28	6.9	0.89^	<0.31	
				12/9/98	AW	NT	<0.31	NT	<0.31	NT	AW	AW	0.38^	<0.31	22	0.52^	1.1	NT	
				5/3/00	AW	NT	<0.25	NT	<0.25	NT	AW	AW	<0.25	<0.25	<2.5	<0.25	<0.25	<0.25	
Total Trimethylbenzenes (1,2,4-TMB + 1,3,5-TMB)																			
	ug/L	480	96	4/15/94	<50	<1.0	<1.0	<1.0	<1.0	NI	NI	NI	NI	NI	NI	NI	NI	NI	NI
				6/20/94	19	<1.0	<1.0	<1.0	<1.0	<1.0	NI	NI	NI	NI	NI	NI	NI	NI	NI
				2/21/95	10	<1.0	<1.0	<1.0	<1.0	<1.0	920	1220	<1.0	NI	NI	NI	NI	NI	NI
				12/19/96	AW	<1.0	<1.0	<1.0	<1.0	<1.0	AW	AW	<1.0	4.3	<50	NT	NT	NT	NT
				3/18/97	AW	<1.0	<1.0	<1.0	<1.0	<1.0	AW	AW	<1.0	<1.0	120	NT	NT	NT	NT
				6/13/97	AW	<1.0	<1.0	<1.0	<1.0	<1.0	AW	AW	<1.0	<1.0	56	NT	NT	NT	NT
				9/10/97	AW	<1.0	<1.0	<1.0	<1.0	<1.0	AW	AW	<1.0	<1.0	<20	NT	NT	NT	NT
				1/7/98	AW	<1.0	<1.0	<1.0	<1.0	<1.0	AW	AW	<1.0	<1.0	<10	NT	NT	NT	NT
				5/26/98	AW	<0.64	<0.64	<0.64	<0.64	<0.64	AW	AW	<0.64	<0.64	18	<6.4	<0.64	<0.64	
				8/19/98	AW	<0.64	<0.64	<0.64	<0.64	<0.64	AW	AW	<0.64	<0.64	4.5^	7.5	<3.5	<0.64	
				12/9/98	AW	NT	<0.64	NT	<0.64	NT	AW	AW	<0.64	<0.64	16	<0.64	<0.64	<0.64	
				5/3/00	AW	NT	<0.20	NT	<0.20	NT	AW	AW	<0.20	<0.20	4.6	<0.20	<0.20	<0.20	

See Attached Footnotes:

Table 1: Summary of Groundwater Analytical Data, Krahn Brothers Oil Company, 18930 West Lincoln Avenue, New Berlin, Wisconsin

Parameter	Units	ES	PAL	Date	MW5	MW6	MW7	MW8	MW9	PZ13	MW14	MW15	MW16	MW17	MW18	RW1	RW2	RW3					
Naphthalene	ug/L	40	8	4/15/94	<100	<2.0	<2.0	<2.0	<2.0	NI	NI	NI	NI	NI	NI	NI	NI	NI					
				6/20/94	NT	NT	NT	NT	NT	<2.0	<2.0	NI	NI	NI	NI	NI	NI	NI	NI	NI			
				2/21/95	NT	NT	NT	NT	NT	NT	NT	NT	NT	NT	NT	NT	NT	NT	NT	NT	NT		
				12/19/96	AW	<1.0	<1.0	<1.0	<1.0	<1.0	<1.0	<1.0	<1.0	AW	1.3	2.6	2.6	<50	NT	NT	NT		
				3/18/97	AW	<1.0	<1.0	<1.0	<1.0	<1.0	<1.0	<1.0	<1.0	AW	<1.0	<1.0	1.3	210	NT	NT	NT		
				6/13/97	AW	<1.0	<1.0	<1.0	<1.0	<1.0	<1.0	<1.0	<1.0	AW	<1.0	<1.0	<1.0	54	NT	NT	NT		
				9/10/97	AW	<1.0	<1.0	<1.0	<1.0	<1.0	<1.0	<1.0	1.6	AW	<1.0	<1.0	<1.0	<20	NT	NT	NT		
				1/7/98	AW	<1.0	<1.0	<1.0	<1.0	<1.0	<1.0	<1.0	<1.0	AW	<1.0	<1.0	<1.0	<10	NT	NT	NT		
				5/26/98	AW	<0.88	<0.88	<0.88	<0.88	<0.88	<0.88	<0.88	<0.88	AW	<0.88	<0.88	<0.88	22^	<8.8	<0.88	<0.88		
				8/19/98	AW	<0.88	<0.88	<0.88	<0.88	<0.88	<0.88	<0.88	<0.88	AW	<0.88	<0.88	<0.88	<8.8	<4.4	<0.88	<0.88		
				12/9/98	AW	NT	<0.88	NT	<0.88	NT	<0.88	NT	<0.88	AW	<0.88	<0.88	<0.88	16^	<0.88	<0.88	NT		
				5/3/00	AW	NT	<0.25	NT	<0.25	NT	<0.25	NT	<0.25	AW	<0.25	<0.25	<0.25	2.6	<0.25	<0.25	NT		
				1,2-Dichloroethane (1,2-DCA)	ug/L	5.0	0.5	4/15/94	100	<1.0	<1.0	<1.0	<1.0	NI	NI	NI	NI	NI	NI	NI	NI	NI	
								6/20/94	NT	NT	NT	NT	NT	<1.0	<1.0	NI	NI	NI	NI	NI	NI	NI	NI
								2/21/95	NT	NT	NT	NT	NT	NT	NT	NT	NT	NT	NT	NT	NT	NT	NT
12/19/96	AW	<1.0	<1.0					<1.0	<1.0	<1.0	<1.0	<1.0	<1.0	AW	6.8	1.0	330	NT	NT	NT			
3/18/97	AW	<0.14	<0.14					<0.14	<0.14	<0.14	<0.14	<0.14	<0.14	AW	18	2.4	360	NT	NT	NT			
6/13/97	AW	<0.14	4.7					<0.14	<0.14	<0.14	<0.14	<0.14	<0.14	AW	9.5	0.182	370	NT	NT	NT			
9/10/97	AW	<0.14	2.3					<0.14	<0.14	<0.14	<0.14	<0.14	<0.14	AW	2.3	<0.14	64	NT	NT	NT			
1/7/98	AW	<0.14	0.21					<0.14	<0.14	<0.14	<0.14	<0.14	<0.14	AW	5	<0.14	240	NT	NT	NT			
5/26/98	AW	<0.36	0.51^					<0.36	<0.36	<0.36	<0.36	<0.36	<0.36	AW	14	<0.36	220	12^	1^	<0.36			
8/19/98	AW	<0.36	<0.36					<0.36	<0.36	<0.36	<0.36	<0.36	<0.36	AW	7.8	<0.36	170	10	2.2	<0.36			
12/9/98	AW	NT	<0.36					NT	<0.36	NT	<0.36	NT	<0.36	AW	6.2	<0.36	210	3.7	1.5	NT			
5/3/00	AW	NT	<0.25					NT	<0.25	NT	<0.25	NT	<0.25	AW	2.6	<0.25	130	<0.25	<0.25	<0.25			
GRO (Gasoline Range Organics)	mg/L	--	--					4/15/94	4.6	<0.05	<0.05	<0.05	<0.05	NI	NI	NI	NI	NI	NI	NI	NI	NI	
								6/20/94	2.1	<0.05	<0.05	<0.05	<0.05	<0.05	<0.05	NI	NI	NI	NI	NI	NI	NI	NI
								2/21/95	1.2	<0.05	<0.05	<0.05	<0.05	<0.05	<0.05	<0.05	49	84	0.13	NI	NI	NI	NI
				12/19/96	AW	<0.05	<0.05	<0.05	<0.05	<0.05	<0.05	<0.05	AW	<0.05	<0.05	<0.05	0.32	7	NT	NT			
				3/18/97	AW	<0.1	<0.1	1.0	<0.1	<0.1	<0.1	<0.1	AW	<0.1	0.1	<0.1	0.1	8	NT	NT			
				6/13/97	AW	NT	NT	NT	NT	NT	NT	NT	NT	AW	AW	AW	NT	NT	NT	NT			
				9/10/97	AW	<0.1	<0.1	<0.1	<0.1	<0.1	<0.1	<0.1	<0.1	AW	<0.1	<0.1	<0.1	1.7	NT	NT			
				1/7/98	AW	NT	NT	NT	NT	NT	NT	NT	NT	AW	AW	AW	NT	NT	NT	NT			
				5/26/98	AW	NT	NT	NT	NT	NT	NT	NT	NT	AW	AW	AW	NT	NT	NT	NT			
				8/19/98	AW	NT	NT	NT	NT	NT	NT	NT	NT	AW	AW	AW	NT	NT	NT	NT			
				12/9/98	AW	NT	NT	NT	NT	NT	NT	NT	NT	AW	AW	AW	NT	NT	NT	NT			
				5/3/00	AW	NT	NT	NT	NT	NT	NT	NT	NT	AW	AW	AW	NT	NT	NT	NT			

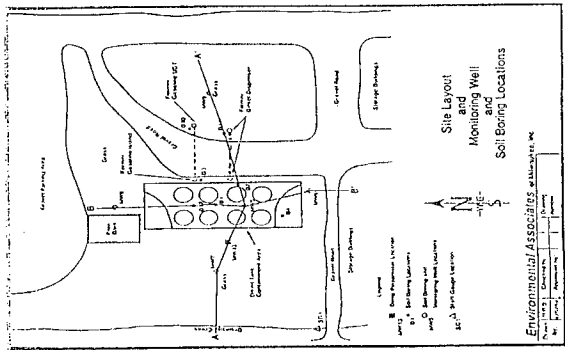
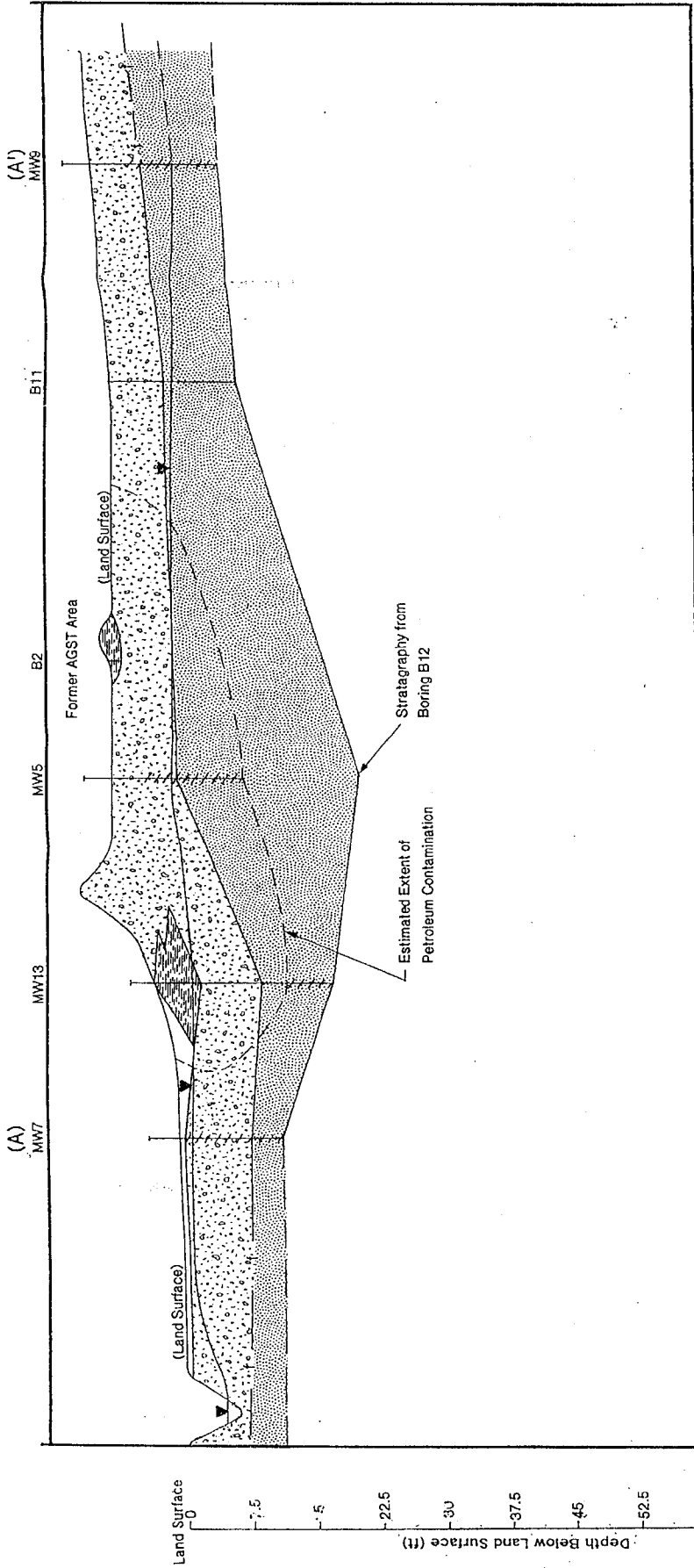
See Attached Footnotes.

Table 1: Summary of Groundwater Analytical Data, Krahn Brothers Oil Company, 18930 West Lincoln Avenue, New Berlin, Wisconsin

Parameter	Units	ES	PAL	Date	MW5	MW6	MW7	MW8	MW9	PZ13	MW14	MW15	MW16	MW17	MW18	RW1	RW2	RW3
DRO (Diesel Range Organics)	mg/L	--	--	4/15/94	13.0	0.21	0.63	<0.10	0.70	NI	NI	NI	NI	NI	NI	NI	NI	NI
		6/20/94	14.0	0.22	1.8	<0.10	0.73	<0.10	0.10	NI	NI	NI	NI	NI	NI	NI	NI	NI
		2/21/95	7.3	<0.10	0.70	<0.10	0.72	2.60	8.30	5.10	0.28	NI	NI	NI	NI	NI	NI	NI
		12/19/96	AW	<0.10	1.8	0.22	1.3	1.3	AW	0.4	1.5	12	NT	NT	NT	NT	NT	NT
		3/18/97	AW	<0.1	0.42	<0.1	<0.1	0.45	AW	<0.1	2	110	NT	NT	NT	NT	NT	NT
		6/13/97	AW	NT	NT	NT	NT	NT	NT	NT	NT	NT	NT	NT	NT	NT	NT	NT
		9/10/97	AW	<0.1	0.29	<0.1	<0.1	0.49	AW	<0.1	0.19	16	NT	NT	NT	NT	NT	NT
		1/7/98	AW	NT	NT	NT	NT	NT	NT	NT	NT	NT	NT	NT	NT	NT	NT	NT
		5/26/98	AW	NT	NT	NT	NT	NT	NT	NT	NT	NT	NT	NT	NT	NT	NT	NT
		8/19/98	AW	NT	NT	NT	NT	NT	NT	NT	NT	NT	NT	NT	NT	NT	NT	NT
Lead (Pb)	ug/L	15	1.5	4/15/94	<1.0	<1.0	<1.0	<1.0	<1.0	NI	NI	NI	NI	NI	NI	NI	NI	NI
		6/20/94	<1.0	<1.0	<1.0	<1.0	<1.0	<1.0	<1.0	<1.0	NI	NI	NI	NI	NI	NI	NI	
		2/21/95	<2.0	<2.0	<2.0	<2.0	<2.0	<2.0	3.8	6.6	<2.0	NI	NI	NI	NI	NI	NI	
		12/19/96	AW	<2.0	<2.0	<2.0	<2.0	<2.0	AW	<2.0	<2.0	<2.0	<2.0	<2.0	<2.0	<2.0	<2.0	<2.0
		3/18/97	AW	<1.0	<1.0	<1.0	<1.0	<1.0	<1.0	<1.0	1	NT	NT	NT	NT	NT	NT	NT
		6/13/97	AW	NT	NT	NT	NT	NT	NT	NT	NT	NT	NT	NT	NT	NT	NT	NT
		1/7/98	AW	NT	NT	NT	NT	NT	NT	NT	NT	NT	NT	NT	NT	NT	NT	NT
		5/26/98	AW	NT	NT	NT	NT	NT	NT	NT	NT	NT	NT	NT	NT	NT	NT	NT
		8/19/98	AW	NT	NT	NT	NT	NT	NT	NT	NT	NT	NT	NT	NT	NT	NT	NT
		12/9/98	AW	NT	NT	NT	NT	NT	NT	NT	NT	NT	NT	NT	NT	NT	NT	NT
5/3/00	AW	NT	NT	NT	NT	NT	NT	NT	NT	NT	NT	NT	NT	NT	NT	NT		

Footnotes:

- ES = Enforcement Standard
- PAL = Preventive Action Limit
- < = Below Laboratory Method Detection Limit
- ^ = Detected between Limit of Detection and Limit of Quantitation
- mg/L = Milligrams per Liter
- ug/L = Micrograms per Liter
- Bold Value** = ES Exceedence
- NT = Not Tested
- AW = Abandoned Well
- NI = Not Installed



▼ Water Table Elevation June 20, 1984

LEGEND

	Silty Sand		Topsoil
	Silty Clay w/ Trace of Sand		Fine to Medium Grained Sand

FIGURE 5
Cross-Section A-A'
(East to West)
 Horizontal Scale 1" = 23'
 Vertical Scale 1" = 15'

Environmental Associates of Milwaukee, Inc.

Drawn by:	Checked by:	Drawing number:
7/15		93-02304-5
Approved by:		
64		

(B')
MW6

MW5

B1

B12

(B)
MW6

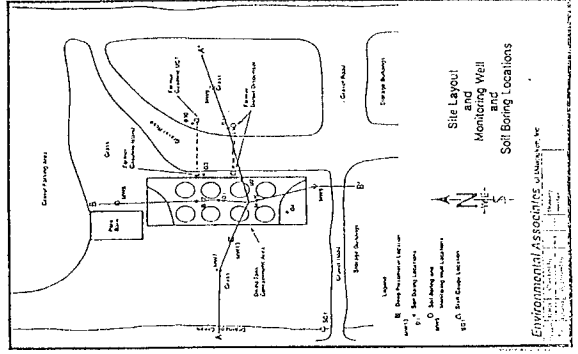
Former AGST Area

Estimated Extent of
Petroleum Contamination

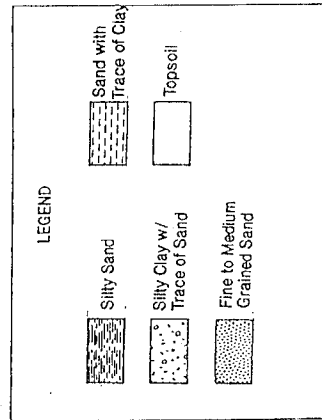
Land Surface
0
-5
-10
-15
-20
-25
-30
-35
-40
Depth Below Land Surface (ft)

FIGURE 6
Cross-Section B-B'
(North to South)

Horizontal Scale 1" = 18'
Vertical Scale 1" = 10'



▼ Water Table Elevation June 20, 1994



Environmental Associates of Milwaukee, Inc.

Drawn by:	Checked by:	Drawing number:
7/74		93-02304-6
Approved by:		
94		