

Kuehling, Harlan H.

From: Mejac, Mark [MEJAC@stsconsultants.com]
Sent: Tuesday, December 06, 2005 3:38 PM
To: Kuehling, Harlan H.
Subject: RE: Reedsburg Cleaners

Thank you Hank; I'll contact the City to obtain access approval. Have a good evening.
Regards, Mark

Mark M. Mejac
STS Consultants, Ltd.
11425 West Lake Park Drive
Milwaukee, WI 53224-3025
Phone: 414-359-3030
Fax: 414-359-0822
Direct: 414-577-1364

-----Original Message-----

From: Kuehling, Harlan H. [mailto:Harlan.Kuehling@dnr.state.wi.us]
Sent: Tuesday, December 06, 2005 3:21 PM
To: Mejac, Mark
Subject: RE: Reedsburg Cleaners

The location you have chosen looks like a reasonable one to intersect the contaminant plume. Thanks, Mark.

Hank

-----Original Message-----

From: Mejac, Mark [mailto:MEJAC@stsconsultants.com]
Sent: Wednesday, November 30, 2005 11:37 AM
To: Kuehling, Harlan H.
Subject: Reedsburg Cleaners

Hank,

At your convenience, please let me know if the proposed location for new monitoring well MW-10 is acceptable. The monitoring well and hydraulic probes are scheduled to be installed on January 4, followed by the groundwater monitoring event on January 5. In the meantime, please let me know if you have any questions.
Thank you, Mark

Mark M. Mejac
STS Consultants, Ltd.
11425 West Lake Park Drive
Milwaukee, WI 53224-3025
Phone: 414-359-3030
Fax: 414-359-0822
Direct: 414-577-1364

This e-mail and any attachments may contain confidential and privileged material for the sole use of the intended recipient(s). Any review or distribution by anyone other than the intended recipient(s) is strictly prohibited. If you are not the intended recipient(s), please contact the sender and delete all copies of this e-mail immediately.

Kuehling, Harlan H.

From: Mejac, Mark [MEJAC@stsconsultants.com]
Sent: Wednesday, November 30, 2005 11:37 AM
To: Kuehling, Harlan H.
Subject: Reedsburg Cleaners

Attachments: 3232.pdf



3232.pdf (382 KB)

Hank,

At your convenience, please let me know if the proposed location for new monitoring well MW-10 is acceptable. The monitoring well and hydraulic probes are scheduled to be installed on January 4, followed by the groundwater monitoring event on January 5. In the meantime, please let me know if you have any questions.
Thank you, Mark

Mark M. Mejac
STS Consultants, Ltd.
11425 West Lake Park Drive
Milwaukee, WI 53224-3025
Phone: 414-359-3030
Fax: 414-359-0822
Direct: 414-577-1364

This e-mail and any attachments may contain confidential and privileged material for the sole use of the intended recipient(s). Any review or distribution by anyone other than the intended recipient(s) is strictly prohibited. If you are not the intended recipient(s), please contact the sender and delete all copies of this e-mail immediately.



STS CONSULTANTS
 11425 W. Lake Park Drive
 Milwaukee, WI 53224
 414-359-3030
 www.stsconsultants.com
 Copyright ©2005, By: STS Consultants, Ltd.

LEGEND

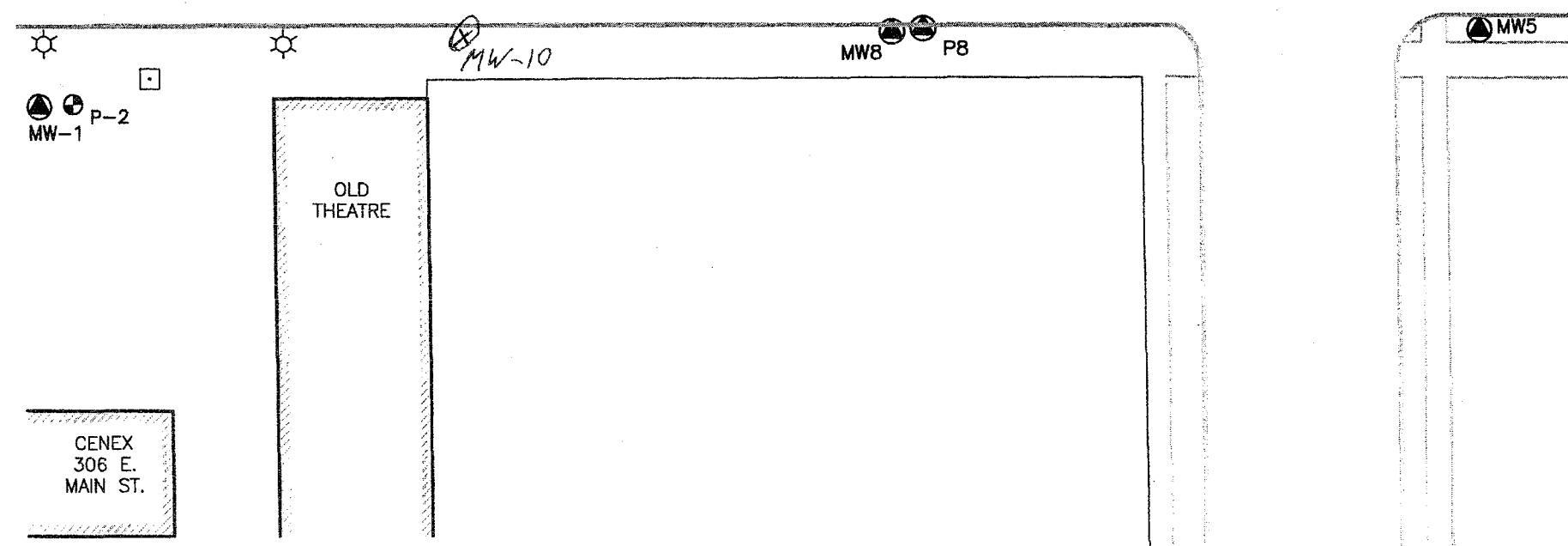
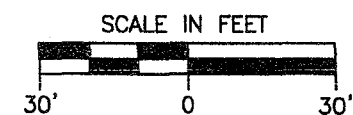
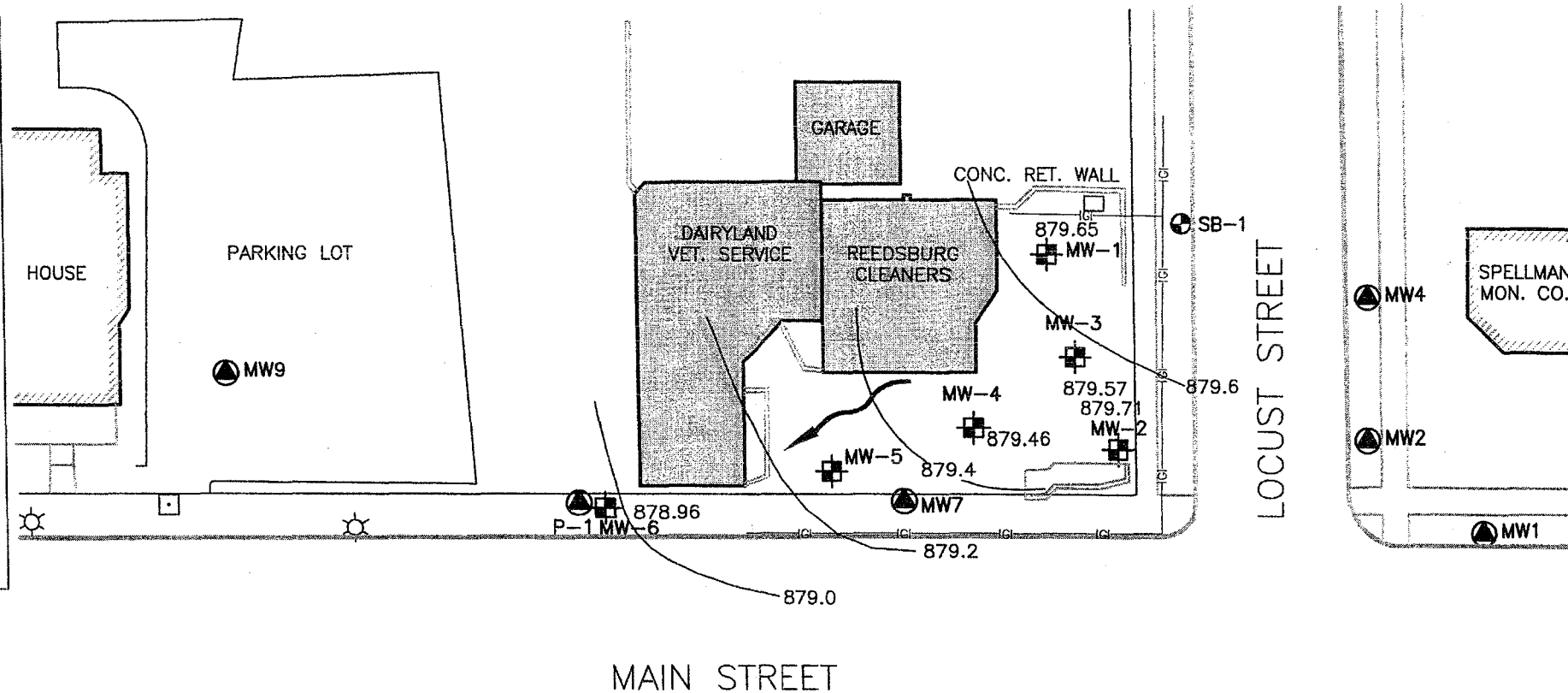
- ⊕ = ELEC. MANHOLE
- ⊙ = TRAFFIC LIGHT
- ⊙ = LIGHT POLE
- ⊠ = ELEC. BOX
- TR = ELEC. TRANSFORMER
- = STM MANHOLE
- ⊙ = SAN MANHOLE
- ⊙ = FIRE HYDRANT
- ⊙ P-2 = MONITORING WELL (BUTZ)
- ⊙ MW7 = MONITORING WELLS (OTHERS)

878.96 ELEVATION IN FEET ABOVE MEAN SEA LEVEL

—|—|— UNDERGROUND GAS LINE

879 WATER TABLE CONTOUR

→ INFERRED GROUNDWATER FLOW DIRECTION



WATER TABLE CONTOURS
 (NOVEMBER 18, 2005)
 REEDSBURG CLEANERS
 349 E. MAIN STREET
 REEDSBURG, WISCONSIN

Drawn :	GG	11/23/05
Checked:	DEF	XX/XX/2004
Approved:	GHI	XX/XX/2004
PROJECT NUMBER	588027XA	
FIGURE NUMBER	1	

X:\Projects\588027XA\dwg\88027XA.dwg, 11/28/2005 3:55:03 PM, guetta