



*Excellence through experience™*

---

709 Gillette St., Ste 3, La Crosse, WI 54603 ♦ 1-800-552-2932 ♦ Fax (608) 781-8893 Email: [rona@metcohq.com](mailto:rona@metcohq.com) ♦ [www.metcohq.com](http://www.metcohq.com)

March 18, 2020

BRRTS #: 03-41-402801  
PECFA #: 53209-6623-35

Tim Zeichert  
Wisconsin Department of Natural Resources  
101 South Webster Street  
Madison, WI 53707

Subject: Ellis Hand Car Wash – Semi-Annual Groundwater Monitoring Report

Dear Mr. Zeichert,

Enclosed is the report (2<sup>nd</sup> of 2) for the Ellis Hand Car Wash and Service site located in Milwaukee, Wisconsin. **This completes the workscope approved by the WDNR on February 22, 2019.**

### **Post Excavation Groundwater Monitoring**

On December 4, 2019, METCO personnel collected groundwater samples from the six monitoring wells (MW-1R, MW-2R, MW-3, MW-4, MW-5 and MW-6) for field and laboratory analysis. The monitoring wells were analyzed for PVOC, Naphthalene, with MW-1R also being sampled for Dissolved Lead. Water level, dissolved oxygen, pH, ORP, specific conductance, and temperature measurements were collected from all sampled monitoring wells.

On February 25, 2020, METCO personnel collected groundwater samples from the six monitoring wells (MW-1R, MW-2R, MW-3, MW-4, MW-5 and MW-6) for field and laboratory analysis. The monitoring wells were analyzed for PVOC, Naphthalene, with MW-1R also being sampled for Dissolved Lead. Water level, dissolved oxygen, pH, ORP, specific conductance, and temperature measurements were collected from all sampled monitoring wells.

### **Discussion of Groundwater Results**

Monitoring Well MW-1R: Currently shows a NR140 Enforcement Standard (ES) exceedances for Benzene (207 ppb), and Preventative Action Limit (PAL) exceedances for Ethylbenzene (320 ppb), and Naphthalene (29.7 ppb). Contaminant levels have decreased significantly after the June 2019 excavation project.

Monitoring Well MW-2R: Currently shows detects but no exceedances for PVOC and Naphthalene. Contaminant levels have decreased after the June 2019 excavation project.

Monitoring Well MW-3: Currently shows no detects for PVOC and Naphthalene.

Monitoring Well MW-4: Currently shows no detects for PVOC and Naphthalene.

Monitoring Well MW-5: Currently shows no detects for PVOC and Naphthalene.

Monitoring Well MW-6: Currently shows no detects for PVOC and Naphthalene.

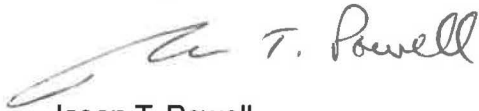
**Conclusion/Recommendation**

It is the recommendation of METCO that this site be reviewed for the possibility of "closure" for the following reasons: 1) The extent and degree of soil and groundwater contamination has been defined to a practical extent. 2) The majority of accessible unsaturated soil contamination was removed (1,292.31 tons) during an excavation project in June 2019. 3) No free product was encountered at this site. 4) Post excavation groundwater sampling results show a significant decrease in contamination levels. 5) Risk of vapor intrusion appears unlikely as no PVOC contaminated soil existed within 5 feet of the building, no NR140 ES exceedances in the groundwater existed beneath the building, and Benzene levels are now well below 1,000 ppb. 6) No municipal wells exist in the area as the City of Milwaukee draws its potable water from Lake Michigan. There are no known private wells that exist in this area.

An Updated Detailed Site Map, Groundwater Flow Direction Maps (2), Groundwater Isoconcentration Map, Data Tables, and Laboratory Documents have been attached.

If you have any questions or comments please feel free to call (608-781-8879) or email at [jasonp@metcohq.com](mailto:jasonp@metcohq.com).

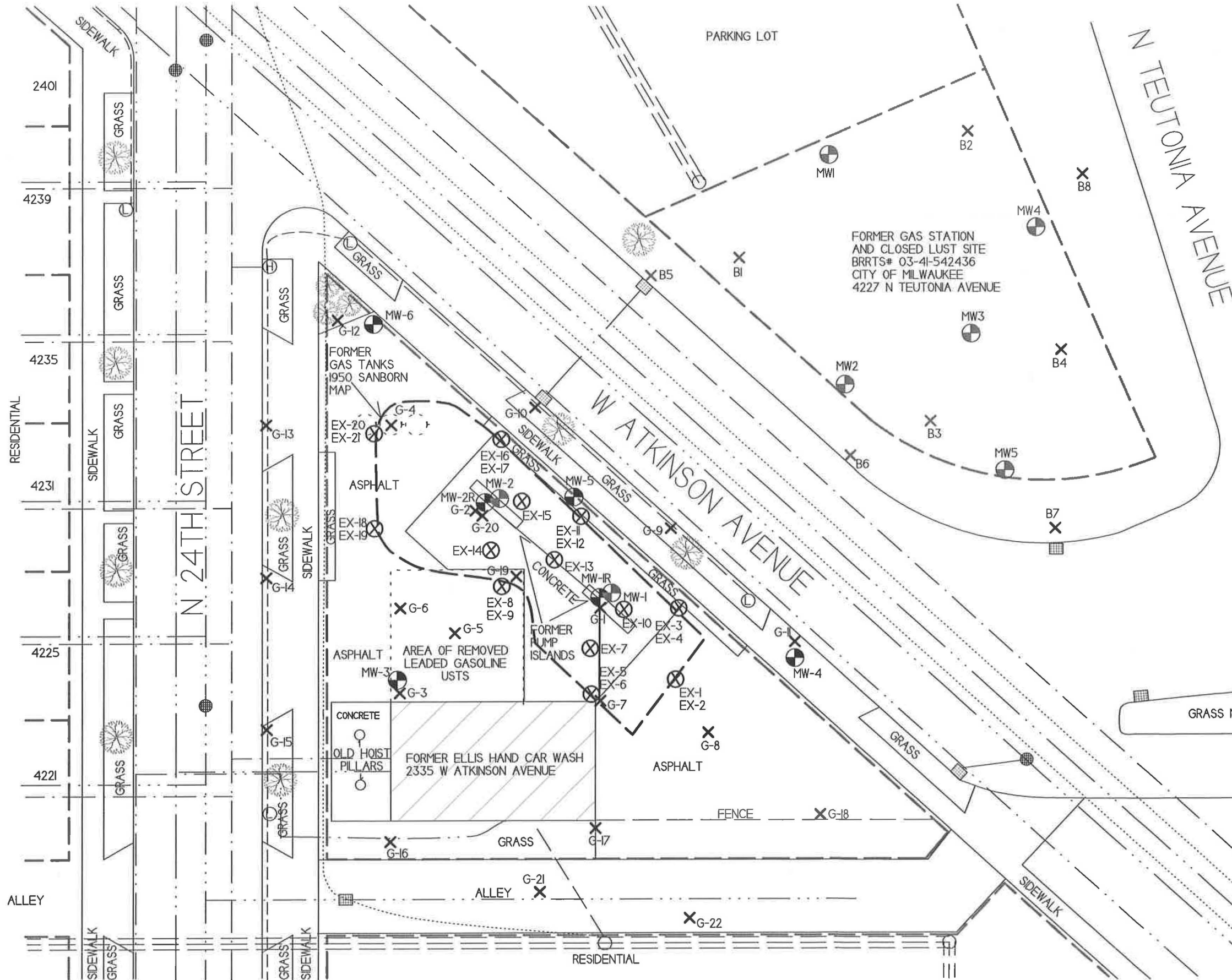
Sincerely,



Jason T. Powell  
Staff Scientist


Attachments

c: Donald Miller – New Hope Missionary Baptist Church of Milwaukee Inc.



**DETAILED SITE MAP**

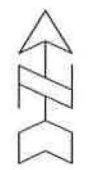
**ELLIS HAND CAR WASH**













799 Gillette St. Suite 3  
La Crosse, WI 54603  
Tel: (608) 781-8879  
Fax: (608) 781-8893

MILWAUKEE,  
WISCONSIN

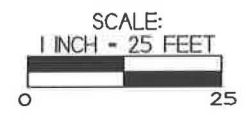
DRAWN BY: ED  
DATE: 12/15/16

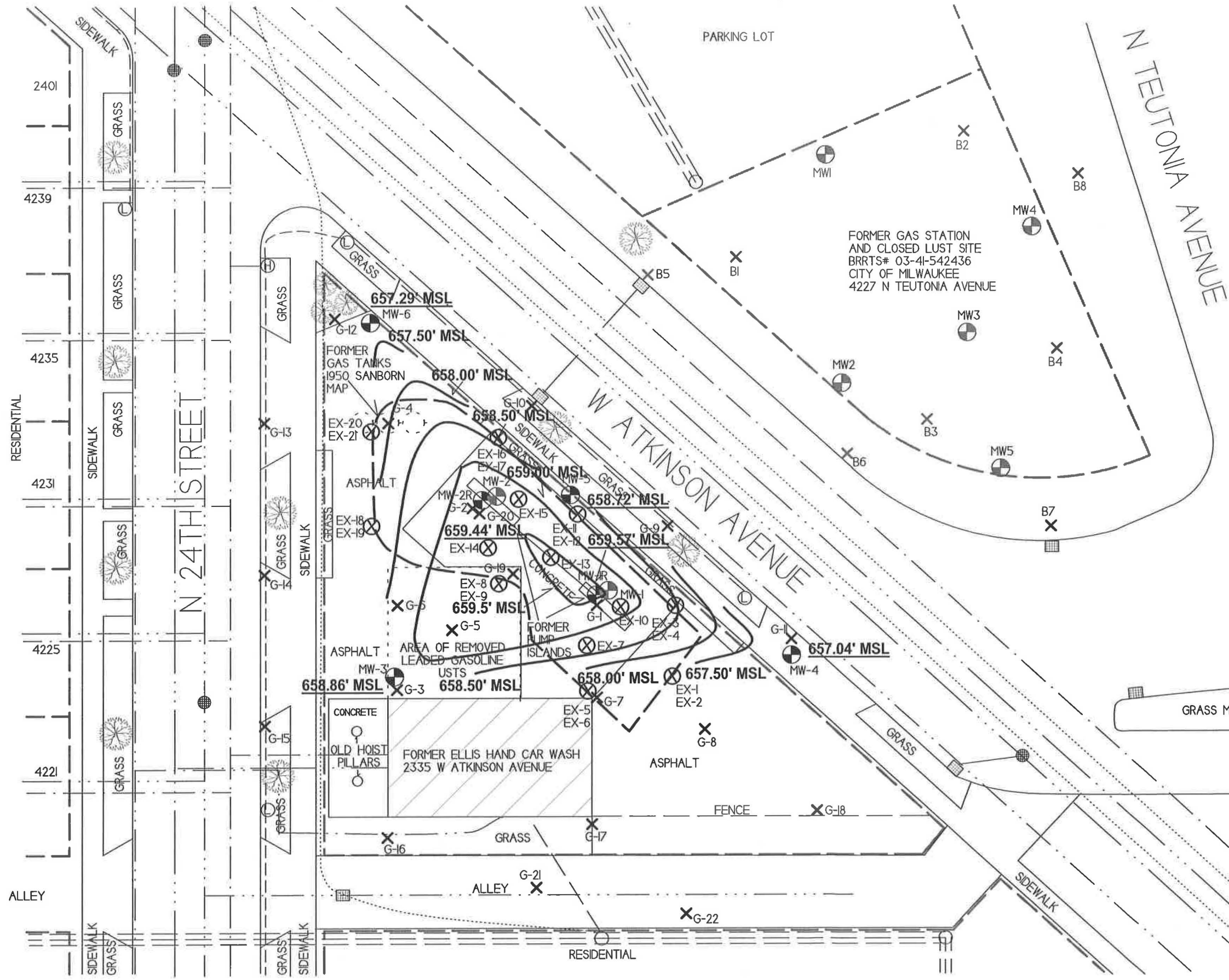


- NOTE: INFORMATION BASED ON AVAILABLE DATA ACTUAL CONDITIONS MAY DIFFER
-  - SOIL BORING LOCATION - CITY OF MILWAUKEE LUST SITE
  -  - FORMER MONITORING WELL LOCATION - CITY OF MILWAUKEE LUST SITE
  -  - SOIL BORING LOCATION
  -  - PROPERTY BOUNDARY
  -  - WATER LINE
  -  - SEWER LINE
  -  - NATURAL GAS LINE
  -  - BURIED ELECTRIC LINE
  -  - OVERHEAD UTILITIES
  -  - TELEPHONE/CABLE LINE

 AREA OF EXCAVATION TO 10 FEET BGS (JUNE 2019)

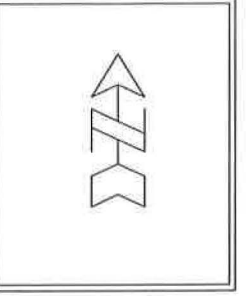
-  - UTILITY POLE
-  - STREET LIGHT
-  - FIRE HYDRANT
-  - SEWER MAN HOLE
-  - STORM DRAIN





**GROUNDWATER FLOW DIRECTION (12/4/19)**  
**ELLIS HAND CAR WASH**

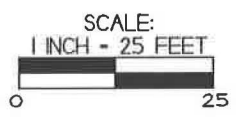
	709 Gillette St, Suite 3 La Crosse, WI 54603 Tel: (608) 781-8879 Fax: (608) 781-8893	MILWAUKEE, WISCONSIN
		DRAWN BY: ED DATE: 12/5/16



- NOTE: INFORMATION BASED ON AVAILABLE DATA ACTUAL CONDITIONS MAY DIFFER
- X** - SOIL BORING LOCATION - CITY OF MILWAUKEE LUST SITE
  - FORMER MONITORING WELL LOCATION - CITY OF MILWAUKEE LUST SITE
  - X** - SOIL BORING LOCATION
  - - PROPERTY BOUNDARY
  - - WATER LINE
  - - SEWER LINE
  - - NATURAL GAS LINE
  - - BURIED ELECTRIC LINE
  - - OVERHEAD UTILITIES
  - - TELEPHONE/CABLE LINE

**[ ]** AREA OF EXCAVATION TO 10 FEET BGS (JUNE 2019)

- UTILITY POLE
- STREET LIGHT
- FIRE HYDRANT
- SEWER MAN HOLE
- STORM DRAIN



RESIDENTIAL  
4240  
4239  
4235  
4231  
4225  
4221  
ALLEY

N 24TH STREET

W ATKINSON AVENUE

N TEUTONIA AVENUE

FORMER GAS STATION AND CLOSED LUST SITE  
 BRRTS# 03-41-542436  
 CITY OF MILWAUKEE  
 4227 N TEUTONIA AVENUE

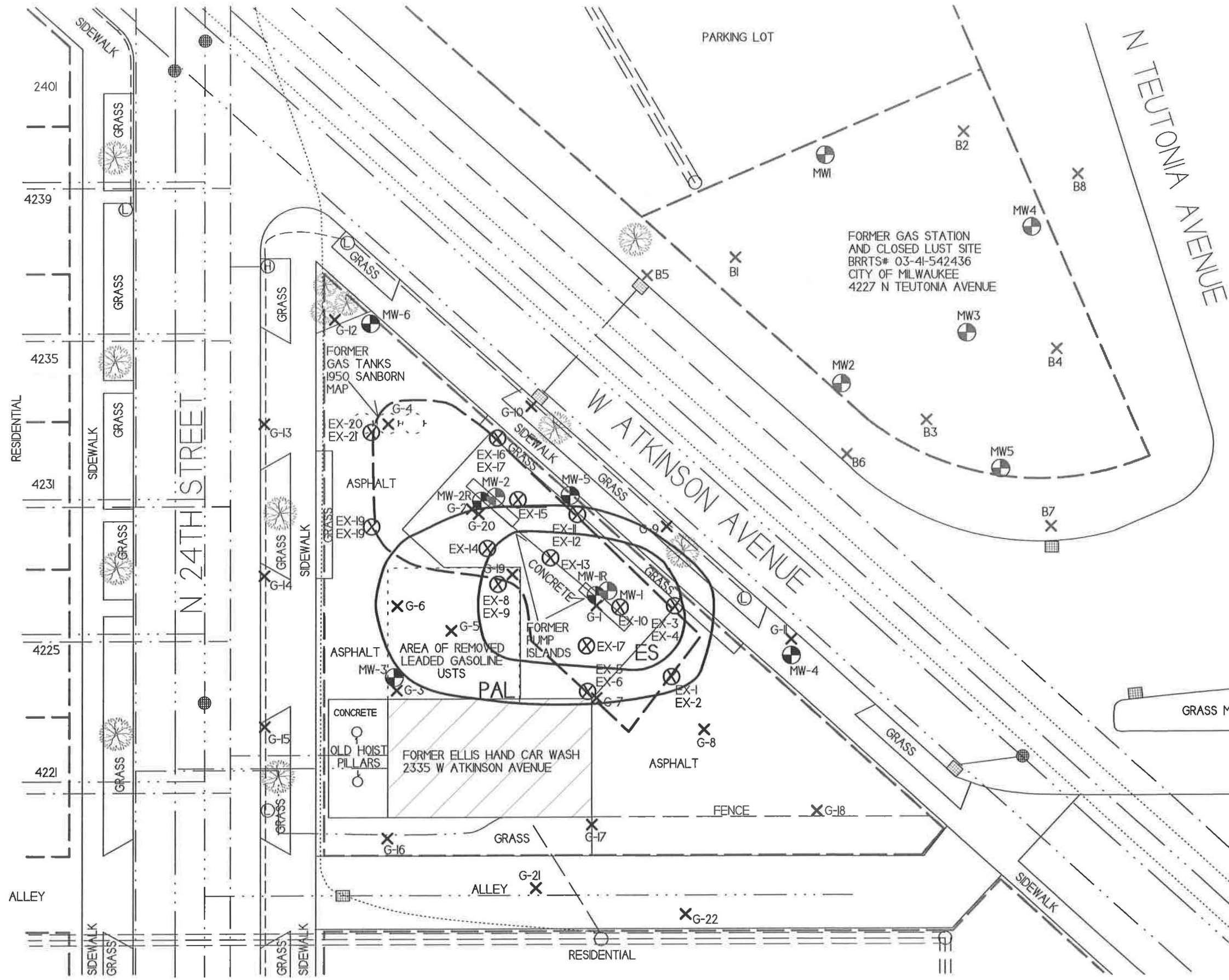
FORMER GAS TANKS  
 1950 SANBORN MAP

AREA OF REMOVED LEADED GASOLINE USTS

OLD HOIST PILLARS  
 FORMER ELLIS HAND CAR WASH  
 2335 W ATKINSON AVENUE

GRASS MEDIAN





GROUNDWATER ISOCONCENTRATION MAP (2/25/20)

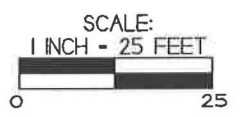
ELLIS HAND CAR WASH

	709 Gillette St, Suite 3 La Crosse, WI 54603 Tel: (608) 781-8879 Fax: (608) 781-8893	MILWAUKEE, WISCONSIN DRAWN BY: ED DATE: 2/25/20
	Existence through experience	

- NOTE: INFORMATION BASED ON AVAILABLE DATA ACTUAL CONDITIONS MAY DIFFER
- X - SOIL BORING LOCATION - CITY OF MILWAUKEE LUST SITE
  - ⊕ - FORMER MONITORING WELL LOCATION - CITY OF MILWAUKEE LUST SITE
  - X - SOIL BORING LOCATION
  - - PROPERTY BOUNDARY
  - - - - - WATER LINE
  - - - - - SEWER LINE
  - - - - - NATURAL GAS LINE
  - - - - - BURIED ELECTRIC LINE
  - - - - - OVERHEAD UTILITIES
  - - - - - TELEPHONE/CABLE LINE

[---] AREA OF EXCAVATION TO 10 FEET BGS (JUNE 2019)

- - UTILITY POLE
- ⊙ - STREET LIGHT
- ⊕ - FIRE HYDRANT
- ⊗ - SEWER MAN HOLE
- ⊠ - STORM DRAIN



RESIDENTIAL

42401

4239

4235

4231

4225

4221

ALLEY

N 24TH STREET

W ATKINSON AVENUE

N TEUTONIA AVENUE

PARKING LOT

FORMER GAS STATION AND CLOSED LUST SITE  
 BRRTS# 03-41-542436  
 CITY OF MILWAUKEE  
 4227 N TEUTONIA AVENUE

FORMER GAS TANKS  
 1950 SANBORN MAP

AREA OF REMOVED LEADED GASOLINE USTS  
 PAL

FORMER ELLIS HAND CAR WASH  
 2335 W ATKINSON AVENUE

GRASS MEDIAN

RESIDENTIAL

**A.1 Groundwater Analytical Table**  
**Ellis Hand Car Wash BRRTS #03-41-402801**

**Well MW-1/1R** MW-1R 662.38  
**PVC Elevation =** 662.44 (feet) (MSL)

Date	Water Elevation (in feet msl)	Depth to water from top of PVC (in feet)	Lead (ppb)	Benzene (ppb)	Ethyl-benzene (ppb)	MTBE (ppb)	Naphthalene (ppb)	Toluene (ppb)	Trimethyl-benzenes (ppb)	Xylene (Total) (ppb)
05/07/18	659.20	3.24	6.6	2970	820	<2.8	110	330	1065	3204
07/31/18	659.07	3.37	8.8	2680	600	<28.5	95	162	469	870-899
06/11/19	WELL ABANDONED DURING EXCAVATION PROJECT									
08/13/19	MW-1 REPLACED WITH MW-1R									
09/11/19	656.58	5.80	3.0	138	189	<0.24	61	25.8	279	295.8
12/04/19	659.57	2.81	1.3	302	390	<2.4	84	36	186.1	199.8
02/25/20	658.13	4.25	<1.1	207	320	<2.35	29.7	14.9	45-46.6	44.3
<b>ENFORCEMENT STANDARD ES = Bold</b>			<b>15</b>	<b>5</b>	<b>700</b>	<b>60</b>	<b>100</b>	<b>800</b>	<b>480</b>	<b>2000</b>
<b>PREVENTIVE ACTION LIMIT PAL = Italics</b>			<i>1.5</i>	<i>0.5</i>	<i>140</i>	<i>12</i>	<i>10</i>	<i>160</i>	<i>96</i>	<i>400</i>

(ppb) = parts per billion (ppm) = parts per million  
 NS = not sampled NM = not measured  
 Note: Elevations are presented in feet mean sea level (msl).

**Well MW-2/2R** MW-2R 662.19  
**PVC Elevation =** 662.35 (feet) (MSL)

Date	Water Elevation (in feet msl)	Depth to water from top of PVC (in feet)	Lead (ppb)	Benzene (ppb)	Ethyl-benzene (ppb)	MTBE (ppb)	Naphthalene (ppb)	Toluene (ppb)	Trimethyl-benzenes (ppb)	Xylene (Total) (ppb)
05/07/18	657.99	4.36	<0.9	7.8	1.31	<0.28	<2.1	1.26	<1.43	1.62-1.91
07/31/18	657.71	4.64	<0.8	29.3	4.8	<0.57	<1.7	5.3	2.67	4.03
06/11/19	WELL ABANDONED DURING EXCAVATION PROJECT									
08/13/19	MW-1 REPLACED WITH MW-1R									
09/11/19	656.58	5.61	NS	0.45	<0.29	<0.24	<1.3	<0.29	<1.13	<1.12
12/04/19	659.44	2.75	NS	<0.32	<0.29	<0.24	<1.3	<0.29	<1.13	<1.22
02/25/20	658.07	4.12	NS	<0.33	<0.32	<0.47	<1.1	<0.26	<0.62	<1.49
<b>ENFORCEMENT STANDARD ES = Bold</b>			<b>15</b>	<b>5</b>	<b>700</b>	<b>60</b>	<b>100</b>	<b>800</b>	<b>480</b>	<b>2000</b>
<b>PREVENTIVE ACTION LIMIT PAL = Italics</b>			<i>1.5</i>	<i>0.5</i>	<i>140</i>	<i>12</i>	<i>10</i>	<i>160</i>	<i>96</i>	<i>400</i>

(ppb) = parts per billion (ppm) = parts per million  
 NS = not sampled NM = not measured  
 Note: Elevations are presented in feet mean sea level (msl).

**Well MW-3**  
**PVC Elevation =** 662.06 (feet) (MSL)

Date	Water Elevation (in feet msl)	Depth to water from top of PVC (in feet)	Lead (ppb)	Benzene (ppb)	Ethyl-benzene (ppb)	MTBE (ppb)	Naphthalene (ppb)	Toluene (ppb)	Trimethyl-benzenes (ppb)	Xylene (Total) (ppb)
05/07/18	658.87	3.19	<0.9	<0.22	<0.26	<0.28	<2.1	<0.19	<1.43	<0.72
07/31/18	658.61	3.45	<0.8	3.4	1.42	<0.57	<1.7	0.56	<1.48	<1.58
09/11/19	657.13	4.93	NS	2.03	0.33	<0.24	<1.3	0.33	<1.13	0.53-1.23
12/04/19	658.86	3.20	NS	1.19	<0.29	<0.24	<1.3	<0.29	<1.13	<1.22
02/25/20	657.68	4.38	NS	<0.33	<0.32	<0.47	<1.1	<0.26	<0.62	<1.49
<b>ENFORCEMENT STANDARD ES = Bold</b>			<b>15</b>	<b>5</b>	<b>700</b>	<b>60</b>	<b>100</b>	<b>800</b>	<b>480</b>	<b>2000</b>
<b>PREVENTIVE ACTION LIMIT PAL = Italics</b>			<i>1.5</i>	<i>0.5</i>	<i>140</i>	<i>12</i>	<i>10</i>	<i>160</i>	<i>96</i>	<i>400</i>

(ppb) = parts per billion (ppm) = parts per million  
 NS = not sampled NM = not measured  
 Note: Elevations are presented in feet mean sea level (msl).

**A.1 Groundwater Analytical Table**  
**Ellis Hand Car Wash BRRTS #03-41-402801**

**Well MW-4**

**PVC Elevation = 662.47 (feet) (MSL)**

Date	Water Elevation (in feet msl)	Depth to water from top of PVC (in feet)	Lead (ppb)	Benzene (ppb)	Ethyl-benzene (ppb)	MTBE (ppb)	Naphthalene (ppb)	Toluene (ppb)	Trimethyl-benzenes (ppb)	Xylene (Total) (ppb)
05/07/18	656.90	5.57	<0.9	<0.22	<0.26	<0.28	<2.1	<0.19	<1.43	<0.72
07/31/18	656.99	5.48	<0.8	<0.22	<0.53	<0.57	<1.7	<0.45	<1.48	<1.58
09/11/19	656.00	6.47	NS	<0.32	<0.29	<0.24	<1.3	<0.29	<1.13	<1.22
12/04/19	658.04	4.43	NS	<0.32	<0.29	<0.24	<1.3	<0.29	<1.13	<1.22
02/25/20	657.01	5.46	NS	<0.33	<0.32	<0.47	<1.1	<0.26	<0.62	<1.49
<b>ENFORCEMENT STANDARD ES = Bold</b>			<b>15</b>	<b>5</b>	<b>700</b>	<b>60</b>	<b>100</b>	<b>800</b>	<b>480</b>	<b>2000</b>
<b>PREVENTIVE ACTION LIMIT PAL = Italics</b>			<i>1.5</i>	<i>0.5</i>	<i>140</i>	<i>12</i>	<i>10</i>	<i>160</i>	<i>96</i>	<i>400</i>

(ppb) = parts per billion (ppm) = parts per million  
 NS = not sampled NM = not measured  
 Note: Elevations are presented in feet mean sea level (msl).

**Well MW-5**

**PVC Elevation = 662.83 (feet) (MSL)**

Date	Water Elevation (in feet msl)	Depth to water from top of PVC (in feet)	Lead (ppb)	Benzene (ppb)	Ethyl-benzene (ppb)	MTBE (ppb)	Naphthalene (ppb)	Toluene (ppb)	Trimethyl-benzenes (ppb)	Xylene (Total) (ppb)
05/07/18	657.64	5.19	<0.9	0.35	<0.26	<0.28	<2.1	<0.19	<1.43	<0.72
07/31/18	657.40	5.43	<0.8	9.9	<0.53	<0.57	<1.7	0.47	<1.48	<1.58
09/11/19	655.82	7.01	NS	<0.32	<0.29	<0.24	<1.3	<0.29	<1.13	<1.22
12/04/19	658.72	4.11	NS	<0.32	<0.29	<0.24	<1.3	<0.29	<1.13	<1.22
02/25/20	658.02	4.81	NS	<0.33	<0.32	<0.47	<1.1	<0.26	<0.62	<1.49
<b>ENFORCEMENT STANDARD ES = Bold</b>			<b>15</b>	<b>5</b>	<b>700</b>	<b>60</b>	<b>100</b>	<b>800</b>	<b>480</b>	<b>2000</b>
<b>PREVENTIVE ACTION LIMIT PAL = Italics</b>			<i>1.5</i>	<i>0.5</i>	<i>140</i>	<i>12</i>	<i>10</i>	<i>160</i>	<i>96</i>	<i>400</i>

(ppb) = parts per billion (ppm) = parts per million  
 NS = not sampled NM = not measured  
 Note: Elevations are presented in feet mean sea level (msl).

**Well MW-6**

**PVC Elevation = 662.40 (feet) (MSL)**

Date	Water Elevation (in feet msl)	Depth to water from top of PVC (in feet)	Lead (ppb)	Benzene (ppb)	Ethyl-benzene (ppb)	MTBE (ppb)	Naphthalene (ppb)	Toluene (ppb)	Trimethyl-benzenes (ppb)	Xylene (Total) (ppb)
05/07/18	655.95	6.45	<0.9	<0.22	<0.26	<0.28	<2.1	<0.19	<1.43	<0.72
07/31/18	657.37	5.03	<0.8	<0.22	<0.53	<0.57	<1.7	<0.45	<1.48	<1.58
09/11/19	656.44	5.96	NS	<0.32	<0.29	<0.24	<1.3	<0.29	<1.13	<1.22
12/04/19	657.29	5.11	NS	<0.32	<0.29	<0.24	<1.3	<0.29	<1.13	<1.22
02/25/20	656.87	5.53	NS	<0.33	<0.32	<0.47	<1.1	<0.26	<0.62	<1.49
<b>ENFORCEMENT STANDARD ES = Bold</b>			<b>15</b>	<b>5</b>	<b>700</b>	<b>60</b>	<b>100</b>	<b>800</b>	<b>480</b>	<b>2000</b>
<b>PREVENTIVE ACTION LIMIT PAL = Italics</b>			<i>1.5</i>	<i>0.5</i>	<i>140</i>	<i>12</i>	<i>10</i>	<i>160</i>	<i>96</i>	<i>400</i>

(ppb) = parts per billion (ppm) = parts per million  
 NS = not sampled NM = not measured  
 Note: Elevations are presented in feet mean sea level (msl).



**A.7 Other**

**Groundwater NA Indicator Results**

Ellis Hand Car Wash BRRTS #03-41-402801

**Well MW-1/1R**

Date	Dissolved Oxygen (ppm)	pH	ORP	Temp ( C)	Specific Conductance	Nitrate + Nitrite (ppm)	Total Sulfate (ppm)	Dissolved Iron (ppm)	Manganese (ppb)
05/07/18	0.35	7.20	186.0	10.2	664	<0.36	34.0	0.04	1800
07/31/18	2.56	7.12	55.1	23.2	1288	NS	NS	NS	NS
06/11/19	WELL ABANDONED DURING EXCAVATION PROJECT								
08/13/19	MW-1 REPLACED WITH MW-1R								
09/11/19	0.90	7.63	5.1	18.81	2718	NS	NS	NS	NS
12/04/19	2.42	7.41	-85.2	8.48	2709	NS	NS	NS	NS
02/25/20	3.30	7.43	-70.0	4.07	2637	NS	NS	NS	NS
ENFORCEMENT STANDARD = ES – Bold						10	-	-	300
PREVENTIVE ACTION LIMIT = PAL - <i>Italics</i>						2	-	-	60

(ppb) = parts per billion (ppm) = parts per million

NS = not sampled

NM = not measured

ORP = Oxidation Reduction Potential

Note: Elevations are presented in feet mean sea level (msl).

**Well MW-2/2R**

Date	Dissolved Oxygen (ppm)	pH	ORP	Temp ( C)	Specific Conductance	Nitrate + Nitrite (ppm)	Total Sulfate (ppm)	Dissolved Iron (ppm)	Manganese (ppb)
05/07/18	0.60	7.29	202.0	10.6	0.80	<0.036	106	0.04	1120
07/31/18	2.75	7.02	59.1	20.1	1228	NS	NS	NS	NS
06/11/19	WELL ABANDONED DURING EXCAVATION PROJECT								
08/13/19	MW-2 REPLACED WITH MW-2R								
09/11/19	1.31	7.16	138.3	19.36	3798	NS	NS	NS	NS
12/04/19	2.87	7.08	93.6	7.72	4834	NS	NS	NS	NS
02/25/20	3.35	7.23	104.2	3.13	5296	NS	NS	NS	NS
ENFORCEMENT STANDARD = ES – Bold						10	-	-	300
PREVENTIVE ACTION LIMIT = PAL - <i>Italics</i>						2	-	-	60

(ppb) = parts per billion (ppm) = parts per million

NS = not sampled

NM = not measured

ORP = Oxidation Reduction Potential

Note: Elevations are presented in feet mean sea level (msl).

**Well MW-3**

Date	Dissolved Oxygen (ppm)	pH	ORP	Temp ( C)	Specific Conductance	Nitrate + Nitrite (ppm)	Total Sulfate (ppm)	Dissolved Iron (ppm)	Manganese (ppb)
05/07/18	4.01	7.36	211.0	8.4	0.80	<0.36	52.6	<0.03	1310
07/31/18	2.73	7.07	58.0	22.5	1350	NS	NS	NS	NS
09/11/19	0.88	7.35	-110.1	19.66	1856	NS	NS	NS	NS
12/04/19	3.00	7.07	62.1	9.48	1860	NS	NS	NS	NS
02/25/20	2.97	7.15	88.8	6.72	1737	NS	NS	NS	NS
ENFORCEMENT STANDARD = ES – Bold						10	-	-	300
PREVENTIVE ACTION LIMIT = PAL - <i>Italics</i>						2	-	-	60

(ppb) = parts per billion (ppm) = parts per million

NS = not sampled

NM = not measured

ORP = Oxidation Reduction Potential

Note: Elevations are presented in feet mean sea level (msl).

**A.7 Other**  
**Groundwater NA Indicator Results**  
**Ellis Hand Car Wash BRRTS #03-41-402801**

**Well MW-4**

Date	Dissolved Oxygen (ppm)	pH	ORP	Temp (C)	Specific Conductance	Nitrate + Nitrite (ppm)	Total Sulfate (ppm)	Dissolved Iron (ppm)	Manganese (ppb)
05/07/18	16.60	7.42	195.0	9.9	994	<0.36	132	0.15	876
07/31/18	2.62	6.79	57.7	20.80	2331	NS	NS	NS	NS
09/11/19	0.91	7.37	214.5	20.00	2662	NS	NS	NS	NS
12/04/19	3.01	7.01	83.1	11.97	2461	NS	NS	NS	NS
02/25/20	5.64	7.21	78.3	7.86	2412	NS	NS	NS	NS
<b>ENFORCEMENT STANDARD = ES – Bold</b>						<b>10</b>	-	-	<b>300</b>
<b>PREVENTIVE ACTION LIMIT = PAL - Italics</b>						<b>2</b>	-	-	<b>60</b>

(ppb) = parts per billion (ppm) = parts per million  
 NS = not sampled NM = not measured ORP = Oxidation Reduction Potential  
 Note: Elevations are presented in feet mean sea level (msl).

**Well MW-5**

Date	Dissolved Oxygen (ppm)	pH	ORP	Temp (C)	Specific Conductance	Nitrate + Nitrite (ppm)	Total Sulfate (ppm)	Dissolved Iron (ppm)	Manganese (ppb)
05/07/18	2.04	7.27	239.0	8.9	0.70	0.59	69.9	<0.03	1590
07/31/18	2.88	7.01	58.3	18.00	1529	NS	NS	NS	NS
09/11/19	0.93	7.21	-60.8	18.77	1521	NS	NS	NS	NS
12/04/19	2.23	6.80	73.4	11.13	2821	NS	NS	NS	NS
02/25/20	3.05	6.85	63.2	6.50	2623	NS	NS	NS	NS
<b>ENFORCEMENT STANDARD = ES – Bold</b>						<b>10</b>	-	-	<b>300</b>
<b>PREVENTIVE ACTION LIMIT = PAL - Italics</b>						<b>2</b>	-	-	<b>60</b>

(ppb) = parts per billion (ppm) = parts per million  
 NS = not sampled NM = not measured ORP = Oxidation Reduction Potential  
 Note: Elevations are presented in feet mean sea level (msl).

**Well MW-6**

Date	Dissolved Oxygen (ppm)	pH	ORP	Temp (C)	Specific Conductance	Nitrate + Nitrite (ppm)	Total Sulfate (ppm)	Dissolved Iron (ppm)	Manganese (ppb)
05/07/18	6.20	7.38	224.0	9.3	0.90	<0.36	124	<0.03	1270
07/31/18	2.70	6.70	58.1	20.23	1628	NS	NS	NS	NS
09/11/19	1.46	7.32	257.4	20.40	1736	NS	NS	NS	NS
12/04/19	4.71	7.00	69.2	12.40	1907	NS	NS	NS	NS
02/25/20	5.89	7.13	62.9	7.61	1983	NS	NS	NS	NS
<b>ENFORCEMENT STANDARD = ES – Bold</b>						<b>10</b>	-	-	<b>300</b>
<b>PREVENTIVE ACTION LIMIT = PAL - Italics</b>						<b>2</b>	-	-	<b>60</b>

(ppb) = parts per billion (ppm) = parts per million  
 NS = not sampled NM = not measured ORP = Oxidation Reduction Potential  
 Note: Elevations are presented in feet mean sea level (msl).

**A.6 Water Level Elevations**  
**Ellis Hand Car Wash BRRTS #03-41-402801**  
**West Allis, Wisconsin**

	MW-1	MW-1R	MW-2	MW-2R	MW-3	MW-4	MW-5	MW-6
<b>Ground Surface (feet msl)</b>	662.87	662.80	662.83	662.55	662.43	662.76	663.12	662.78
<b>PVC top (feet msl)</b>	662.44	662.38	662.35	662.19	662.06	662.47	662.83	662.40
<b>Well Depth (feet)</b>	14.00	13.00	14.00	13.00	14.00	14.00	14.00	14.00
<b>Top of screen (feet msl)</b>	658.87	659.80	658.83	659.55	658.43	658.76	659.12	658.78
<b>Bottom of screen (feet msl)</b>	648.87	649.80	648.83	649.55	648.43	648.76	649.12	648.78
<b>Depth to Water From Top of PVC (feet)</b>								
<b>05/07/18</b>	3.24	NI	4.36	NI	3.19	5.57	5.19	6.45
<b>07/31/18</b>	3.37	NI	4.64	NI	3.45	5.48	5.43	5.03
<b>09/11/19</b>	A	5.80	A	5.61	4.93	6.47	7.01	5.96
<b>12/04/19</b>	A	2.81	A	2.75	3.20	4.43	4.11	5.11
<b>02/25/19</b>	A	4.25	A	4.12	4.38	5.46	4.81	5.53
<b>Depth to Water From Ground Surface (feet)</b>								
<b>05/07/18</b>	3.67	NI	4.84	NI	3.56	5.86	5.48	6.83
<b>07/31/18</b>	3.80	NI	5.12	NI	3.82	5.77	5.72	5.41
<b>09/11/19</b>	A	6.22	A	5.97	5.30	6.76	7.30	6.34
<b>12/04/19</b>	A	3.23	A	3.11	3.57	4.72	4.40	5.49
<b>02/25/19</b>	A	4.67	A	4.48	4.75	5.75	5.10	5.91
<b>Groundwater Elevation (feet msl)</b>								
<b>05/07/18</b>	659.20	NI	657.99	NI	658.87	656.90	657.64	655.95
<b>07/31/18</b>	659.07	NI	657.71	NI	658.61	656.99	657.40	657.37
<b>09/11/19</b>	A	656.58	A	656.58	657.13	656.00	655.82	656.44
<b>12/04/19</b>	A	659.57	A	659.44	658.86	658.04	658.72	657.29
<b>02/25/19</b>	A	658.13	A	658.07	657.68	657.01	658.02	656.87

Note: Elevations are presented in feet mean sea level (msl).  
 CNL = Could Not Locate  
 A = Abandoned and removed during soil excavation project  
 NI = Not Installed  
 NM = Not Measured

# Synergy Environmental Lab,

1990 Prospect Ct., Appleton, WI 54914 \*P 920-830-2455 \* F 920-733-0631

DONALD MILLER  
NEW HOPE BAPTIST CHURCH  
2433 W. ROOSEVELT DRIVE  
MILWAUKEE, WI 53209

Report Date 13-Dec-19

Project Name ELLIS HAND CAR WASH  
Project #

Invoice # E37257

Lab Code 5037257A  
Sample ID MW-6  
Sample Matrix Water  
Sample Date 12/4/2019

	Result	Unit	LOD	LOQ	Dil	Method	Ext Date	Run Date	Analyst	Code
Organic										
PVOC + Naphthalene										
Benzene	< 0.32	ug/l	0.32	1.02	1	GRO95/8021		12/10/2019	CJR	1
Ethylbenzene	< 0.29	ug/l	0.29	0.94	1	GRO95/8021		12/10/2019	CJR	1
Methyl tert-butyl ether (MTBE)	< 0.24	ug/l	0.24	0.78	1	GRO95/8021		12/10/2019	CJR	1
Naphthalene	< 1.3	ug/l	1.3	4.1	1	GRO95/8021		12/10/2019	CJR	1
Toluene	< 0.29	ug/l	0.29	0.93	1	GRO95/8021		12/10/2019	CJR	1
1,2,4-Trimethylbenzene	< 0.46	ug/l	0.46	1.46	1	GRO95/8021		12/10/2019	CJR	1
1,3,5-Trimethylbenzene	< 0.67	ug/l	0.67	2.15	1	GRO95/8021		12/10/2019	CJR	1
m&p-Xylene	< 0.52	ug/l	0.52	1.67	1	GRO95/8021		12/10/2019	CJR	1
o-Xylene	< 0.7	ug/l	0.7	2.24	1	GRO95/8021		12/10/2019	CJR	1

Project Name ELLIS HAND CAR WASH  
 Project #

Invoice # E37257

Lab Code 5037257B  
 Sample ID MW-4  
 Sample Matrix Water  
 Sample Date 12/4/2019

	Result	Unit	LOD	LOQ	Dil	Method	Ext Date	Run Date	Analyst	Code
Organic										
PVOC + Naphthalene										
Benzene	< 0.32	ug/l	0.32	1.02	1	GRO95/8021		12/12/2019	CJR	1
Ethylbenzene	< 0.29	ug/l	0.29	0.94	1	GRO95/8021		12/12/2019	CJR	1
Methyl tert-butyl ether (MTBE)	< 0.24	ug/l	0.24	0.78	1	GRO95/8021		12/12/2019	CJR	1
Naphthalene	< 1.3	ug/l	1.3	4.1	1	GRO95/8021		12/12/2019	CJR	1
Toluene	< 0.29	ug/l	0.29	0.93	1	GRO95/8021		12/12/2019	CJR	1
1,2,4-Trimethylbenzene	< 0.46	ug/l	0.46	1.46	1	GRO95/8021		12/12/2019	CJR	1
1,3,5-Trimethylbenzene	< 0.67	ug/l	0.67	2.15	1	GRO95/8021		12/12/2019	CJR	1
m&p-Xylene	< 0.52	ug/l	0.52	1.67	1	GRO95/8021		12/12/2019	CJR	1
o-Xylene	< 0.7	ug/l	0.7	2.24	1	GRO95/8021		12/12/2019	CJR	1

Lab Code 5037257C  
 Sample ID MW-5  
 Sample Matrix Water  
 Sample Date 12/4/2019

	Result	Unit	LOD	LOQ	Dil	Method	Ext Date	Run Date	Analyst	Code
Organic										
PVOC + Naphthalene										
Benzene	< 0.32	ug/l	0.32	1.02	1	GRO95/8021		12/12/2019	CJR	1
Ethylbenzene	< 0.29	ug/l	0.29	0.94	1	GRO95/8021		12/12/2019	CJR	1
Methyl tert-butyl ether (MTBE)	< 0.24	ug/l	0.24	0.78	1	GRO95/8021		12/12/2019	CJR	1
Naphthalene	< 1.3	ug/l	1.3	4.1	1	GRO95/8021		12/12/2019	CJR	1
Toluene	< 0.29	ug/l	0.29	0.93	1	GRO95/8021		12/12/2019	CJR	1
1,2,4-Trimethylbenzene	< 0.46	ug/l	0.46	1.46	1	GRO95/8021		12/12/2019	CJR	1
1,3,5-Trimethylbenzene	< 0.67	ug/l	0.67	2.15	1	GRO95/8021		12/12/2019	CJR	1
m&p-Xylene	< 0.52	ug/l	0.52	1.67	1	GRO95/8021		12/12/2019	CJR	1
o-Xylene	< 0.7	ug/l	0.7	2.24	1	GRO95/8021		12/12/2019	CJR	1

Lab Code 5037257D  
 Sample ID MW-3  
 Sample Matrix Water  
 Sample Date 12/4/2019

	Result	Unit	LOD	LOQ	Dil	Method	Ext Date	Run Date	Analyst	Code
Organic										
PVOC + Naphthalene										
Benzene	1.19	ug/l	0.32	1.02	1	GRO95/8021		12/12/2019	CJR	1
Ethylbenzene	< 0.29	ug/l	0.29	0.94	1	GRO95/8021		12/12/2019	CJR	1
Methyl tert-butyl ether (MTBE)	< 0.24	ug/l	0.24	0.78	1	GRO95/8021		12/12/2019	CJR	1
Naphthalene	< 1.3	ug/l	1.3	4.1	1	GRO95/8021		12/12/2019	CJR	1
Toluene	< 0.29	ug/l	0.29	0.93	1	GRO95/8021		12/12/2019	CJR	1
1,2,4-Trimethylbenzene	< 0.46	ug/l	0.46	1.46	1	GRO95/8021		12/12/2019	CJR	1
1,3,5-Trimethylbenzene	< 0.67	ug/l	0.67	2.15	1	GRO95/8021		12/12/2019	CJR	1
m&p-Xylene	< 0.52	ug/l	0.52	1.67	1	GRO95/8021		12/12/2019	CJR	1
o-Xylene	< 0.7	ug/l	0.7	2.24	1	GRO95/8021		12/12/2019	CJR	1

Project Name ELLIS HAND CAR WASH

Invoice # E37257

Project #

Lab Code 5037257E  
 Sample ID MW-2R  
 Sample Matrix Water  
 Sample Date 12/4/2019

	Result	Unit	LOD	LOQ	Dil	Method	Ext Date	Run Date	Analyst	Code
Organic										
PVOC + Naphthalene										
Benzene	< 0.32	ug/l	0.32	1.02	1	GRO95/8021		12/12/2019	CJR	1
Ethylbenzene	< 0.29	ug/l	0.29	0.94	1	GRO95/8021		12/12/2019	CJR	1
Methyl tert-butyl ether (MTBE)	< 0.24	ug/l	0.24	0.78	1	GRO95/8021		12/12/2019	CJR	1
Naphthalene	< 1.3	ug/l	1.3	4.1	1	GRO95/8021		12/12/2019	CJR	1
Toluene	< 0.29	ug/l	0.29	0.93	1	GRO95/8021		12/12/2019	CJR	1
1,2,4-Trimethylbenzene	< 0.46	ug/l	0.46	1.46	1	GRO95/8021		12/12/2019	CJR	1
1,3,5-Trimethylbenzene	< 0.67	ug/l	0.67	2.15	1	GRO95/8021		12/12/2019	CJR	1
m&p-Xylene	< 0.52	ug/l	0.52	1.67	1	GRO95/8021		12/12/2019	CJR	1
o-Xylene	< 0.7	ug/l	0.7	2.24	1	GRO95/8021		12/12/2019	CJR	1

Lab Code 5037257F  
 Sample ID MW-1R  
 Sample Matrix Water  
 Sample Date 12/4/2019

	Result	Unit	LOD	LOQ	Dil	Method	Ext Date	Run Date	Analyst	Code
Inorganic										
Metals										
Lead, Dissolved	1.3 "J"	ug/L	1.1	3.7	1	7421		12/10/2019	CWT	1

Organic										
PVOC + Naphthalene										
Benzene	302	ug/l	3.2	10.2	10	GRO95/8021		12/13/2019	CJR	1
Ethylbenzene	390	ug/l	2.9	9.4	10	GRO95/8021		12/13/2019	CJR	1
Methyl tert-butyl ether (MTBE)	< 2.4	ug/l	2.4	7.8	10	GRO95/8021		12/13/2019	CJR	1
Naphthalene	84	ug/l	13	41	10	GRO95/8021		12/13/2019	CJR	1
Toluene	36	ug/l	2.9	9.3	10	GRO95/8021		12/13/2019	CJR	1
1,2,4-Trimethylbenzene	179	ug/l	4.6	14.6	10	GRO95/8021		12/13/2019	CJR	1
1,3,5-Trimethylbenzene	7.1 "J"	ug/l	6.7	21.5	10	GRO95/8021		12/13/2019	CJR	1
m&p-Xylene	181	ug/l	5.2	16.7	10	GRO95/8021		12/13/2019	CJR	1
o-Xylene	18.8 "J"	ug/l	7	22.4	10	GRO95/8021		12/13/2019	CJR	1

Project Name ELLIS HAND CAR WASH  
 Project #

Invoice # E37257

Lab Code 5037257G  
 Sample ID TB  
 Sample Matrix Water  
 Sample Date 12/4/2019

	Result	Unit	LOD	LOQ	Dil	Method	Ext Date	Run Date	Analyst	Code
Organic										
PVOC + Naphthalene										
Benzene	< 0.32	ug/l	0.32	1.02	1	GRO95/8021		12/12/2019	CJR	1
Ethylbenzene	< 0.29	ug/l	0.29	0.94	1	GRO95/8021		12/12/2019	CJR	1
Methyl tert-butyl ether (MTBE)	< 0.24	ug/l	0.24	0.78	1	GRO95/8021		12/12/2019	CJR	1
Naphthalene	< 1.3	ug/l	1.3	4.1	1	GRO95/8021		12/12/2019	CJR	1
Toluene	< 0.29	ug/l	0.29	0.93	1	GRO95/8021		12/12/2019	CJR	1
1,2,4-Trimethylbenzene	< 0.46	ug/l	0.46	1.46	1	GRO95/8021		12/12/2019	CJR	1
1,3,5-Trimethylbenzene	< 0.67	ug/l	0.67	2.15	1	GRO95/8021		12/12/2019	CJR	1
m&p-Xylene	< 0.52	ug/l	0.52	1.67	1	GRO95/8021		12/12/2019	CJR	1
o-Xylene	< 0.7	ug/l	0.7	2.24	1	GRO95/8021		12/12/2019	CJR	1

"J" Flag: Analyte detected between LOD and LOQ

LOD Limit of Detection

LOQ Limit of Quantitation

**Code** **Comment**

1 Laboratory QC within limits.

CWT denotes sub contract lab - Certification #445126660

All solid sample results reported on a dry weight basis unless otherwise indicated. All LOD's and LOQ's are adjusted for dilutions but not dry weight. Subcontracted results are denoted by SUB in the analyst field.

Authorized Signature

*Michael Ricker*

# Synergy

## Environmental Lab, Inc.

1990 Prospect Ct. • Appleton, WI 54914  
920-830-2455 • FAX 920-733-0631

**Sample Handling Request**

Rush Analysis Date Required \_\_\_\_\_  
(Rushes accepted only with prior authorization)

Normal Turn Around

Lab I.D. # \_\_\_\_\_  
Account No. : \_\_\_\_\_ Quote No.: \_\_\_\_\_  
Project #: \_\_\_\_\_  
Sampler: (signature) *RK ZLD*

Project (Name / Location): *Ellis Land Co Wast / Milwaukee, WI*

Reports To: *Donald Miller* Invoice To: *Donald Miller*

Company: *New Hope Missionary Baptist Church of Milwaukee* Company: *SO METCO*

Address: *2433 W. Roosevelt Dr.* Address: *709 Gillette St., Ste #3*

City State Zip: *Milwaukee, WI 53209* City State Zip: *La Crosse, WI 54603*

Phone: \_\_\_\_\_ Phone: *608 781 8879*

FAX: \_\_\_\_\_ FAX: \_\_\_\_\_

Analysis Requested										Other Analysis									
<input type="checkbox"/>	<input type="checkbox"/>	<input type="checkbox"/>	<input type="checkbox"/>	<input type="checkbox"/>	<input type="checkbox"/>	<input type="checkbox"/>	<input type="checkbox"/>	<input type="checkbox"/>	<input type="checkbox"/>	<input type="checkbox"/>	<input type="checkbox"/>	<input type="checkbox"/>	<input type="checkbox"/>	<input type="checkbox"/>	<input type="checkbox"/>	<input type="checkbox"/>	<input type="checkbox"/>	<input type="checkbox"/>	<input type="checkbox"/>
DRO (Mod DRO Sep 95)	GRO (Mod GRO Sep 95)	LEAD (Dissolved)	NITRATE/NITRITE	OIL & GREASE	PAH (EPA 8270)	PCB	PVOC (EPA 8021)	PVOC + NAPHTHALENE	SULFATE	TOTAL SUSPENDED SOLIDS	VOC DW (EPA 524.2)	VOC (EPA 8260)	8-RCRA METALS						

Lab I.D.	Sample I.D.	Collection Date	Time	Comp	Grab	Filtered Y/N	No. of Containers	Sample Type (Matrix)*	Preservation	DRO (Mod DRO Sep 95)	GRO (Mod GRO Sep 95)	LEAD (Dissolved)	NITRATE/NITRITE	OIL & GREASE	PAH (EPA 8270)	PCB	PVOC (EPA 8021)	PVOC + NAPHTHALENE	SULFATE	TOTAL SUSPENDED SOLIDS	VOC DW (EPA 524.2)	VOC (EPA 8260)	8-RCRA METALS	PID/ FID
<i>5057257A</i>	<i>MU-6</i>	<i>12-4-11</i>	<i>1:08</i>		<i>X</i>	<i>N</i>	<i>3</i>	<i>GW</i>	<i>HCL</i>									<i>X</i>						
<i>B</i>	<i>MU-4</i>		<i>1:30</i>		<i>X</i>													<i>X</i>						
<i>C</i>	<i>MU-5</i>		<i>1:40</i>		<i>X</i>													<i>X</i>						
<i>D</i>	<i>MU-3</i>		<i>2:02</i>		<i>X</i>													<i>X</i>						
<i>E</i>	<i>MU-2R</i>		<i>2:20</i>		<i>X</i>	<i>N</i>												<i>X</i>						
<i>F</i>	<i>MU-1R</i>		<i>2:40</i>		<i>X</i>	<i>N</i>	<i>4</i>		<i>HCL/Haw</i>			<i>X</i>						<i>X</i>						
<i>G</i>	<i>TB</i>					<i>N</i>	<i>1</i>		<i>HCL</i>									<i>X</i>						

Comments/Special Instructions (\*Specify groundwater "GW", Drinking Water "DW", Waste Water "WW", Soil "S", Air "A", Oil, Sludge etc.)

*\* Lab to send copy of report to METCO/Jason P. (Invoice to METCO)*

*\* Volc Rates APPLY*

*\* Agent Status*

Sample Integrity - To be completed by receiving lab

Method of Shipment: *GC*

Temp. of Temp. Blank: \_\_\_\_\_ °C On Ice:

Cooler seal intact upon receipt:  Yes  No

Relinquished By: (sign) *RK ZLD* Time: *7:35* Date: *12-5-19*

Received By: (sign) \_\_\_\_\_ Time: \_\_\_\_\_ Date: \_\_\_\_\_

Received in Laboratory By: *Christina* Time: *8:00* Date: *12/10/19*



# Synergy Environmental Lab,

1990 Prospect Ct., Appleton, WI 54914 \*P 920-830-2455 \* F 920-733-0631

DONALD MILLER  
DONALD MILLER  
2433 W ROOSEVELT DRIVE  
MILWAUKEE, WI 53209

Report Date 10-Mar-20

Project Name ELLIS HAND CAR WASH  
Project #

Invoice # E37552

Lab Code 5037552A  
Sample ID MW-6  
Sample Matrix Water  
Sample Date 2/25/2020

	Result	Unit	LOD	LOQ	Dil	Method	Ext Date	Run Date	Analyst	Code
Organic										
PVOC + Naphthalene										
Benzene	< 0.33	ug/l	0.33		1	8260B		3/3/2020	CJR	1
Ethylbenzene	< 0.32	ug/l	0.32		1	8260B		3/3/2020	CJR	1
Methyl tert-butyl ether (MTBE)	< 0.47	ug/l	0.47		1.5	8260B		3/3/2020	CJR	1
Naphthalene	< 1.1	ug/l	1.1		3.6	8260B		3/3/2020	CJR	1
Toluene	< 0.26	ug/l	0.26		0.83	8260B		3/3/2020	CJR	1
1,2,4-Trimethylbenzene	< 0.3	ug/l	0.3		0.96	8260B		3/3/2020	CJR	1
1,3,5-Trimethylbenzene	< 0.32	ug/l	0.32		1	8260B		3/3/2020	CJR	1
m&p-Xylene	< 1.1	ug/l	1.1		3.3	8260B		3/3/2020	CJR	1
o-Xylene	< 0.38	ug/l	0.38		1.2	8260B		3/3/2020	CJR	1

Project #

Lab Code 5037552B  
 Sample ID MW-4  
 Sample Matrix Water  
 Sample Date 2/25/2020

	Result	Unit	LOD	LOQ	Dil	Method	Ext Date	Run Date	Analyst	Code
Organic										
PVOC + Naphthalene										
Benzene	< 0.33	ug/l	0.33		1	1	8260B	3/3/2020	CJR	1
Ethylbenzene	< 0.32	ug/l	0.32		1	1	8260B	3/3/2020	CJR	1
Methyl tert-butyl ether (MTBE)	< 0.47	ug/l	0.47		1.5	1	8260B	3/3/2020	CJR	1
Naphthalene	< 1.1	ug/l	1.1		3.6	1	8260B	3/3/2020	CJR	1
Toluene	< 0.26	ug/l	0.26		0.83	1	8260B	3/3/2020	CJR	1
1,2,4-Trimethylbenzene	< 0.3	ug/l	0.3		0.96	1	8260B	3/3/2020	CJR	1
1,3,5-Trimethylbenzene	< 0.32	ug/l	0.32		1	1	8260B	3/3/2020	CJR	1
m&p-Xylene	< 1.1	ug/l	1.1		3.3	1	8260B	3/3/2020	CJR	1
o-Xylene	< 0.38	ug/l	0.38		1.2	1	8260B	3/3/2020	CJR	1

Lab Code 5037552C  
 Sample ID MW-5  
 Sample Matrix Water  
 Sample Date 2/25/2020

	Result	Unit	LOD	LOQ	Dil	Method	Ext Date	Run Date	Analyst	Code
Organic										
PVOC + Naphthalene										
Benzene	< 0.33	ug/l	0.33		1	1	8260B	3/3/2020	CJR	1
Ethylbenzene	< 0.32	ug/l	0.32		1	1	8260B	3/3/2020	CJR	1
Methyl tert-butyl ether (MTBE)	< 0.47	ug/l	0.47		1.5	1	8260B	3/3/2020	CJR	1
Naphthalene	< 1.1	ug/l	1.1		3.6	1	8260B	3/3/2020	CJR	1
Toluene	< 0.26	ug/l	0.26		0.83	1	8260B	3/3/2020	CJR	1
1,2,4-Trimethylbenzene	< 0.3	ug/l	0.3		0.96	1	8260B	3/3/2020	CJR	1
1,3,5-Trimethylbenzene	< 0.32	ug/l	0.32		1	1	8260B	3/3/2020	CJR	1
m&p-Xylene	< 1.1	ug/l	1.1		3.3	1	8260B	3/3/2020	CJR	1
o-Xylene	< 0.38	ug/l	0.38		1.2	1	8260B	3/3/2020	CJR	1

Lab Code 5037552D  
 Sample ID MW-2R  
 Sample Matrix Water  
 Sample Date 2/25/2020

	Result	Unit	LOD	LOQ	Dil	Method	Ext Date	Run Date	Analyst	Code
Organic										
PVOC + Naphthalene										
Benzene	< 0.33	ug/l	0.33		1	1	8260B	3/3/2020	CJR	1
Ethylbenzene	< 0.32	ug/l	0.32		1	1	8260B	3/3/2020	CJR	1
Methyl tert-butyl ether (MTBE)	< 0.47	ug/l	0.47		1.5	1	8260B	3/3/2020	CJR	1
Naphthalene	< 1.1	ug/l	1.1		3.6	1	8260B	3/3/2020	CJR	1
Toluene	< 0.26	ug/l	0.26		0.83	1	8260B	3/3/2020	CJR	1
1,2,4-Trimethylbenzene	< 0.3	ug/l	0.3		0.96	1	8260B	3/3/2020	CJR	1
1,3,5-Trimethylbenzene	< 0.32	ug/l	0.32		1	1	8260B	3/3/2020	CJR	1
m&p-Xylene	< 1.1	ug/l	1.1		3.3	1	8260B	3/3/2020	CJR	1
o-Xylene	< 0.38	ug/l	0.38		1.2	1	8260B	3/3/2020	CJR	1

Project Name ELLIS HAND CAR WASH

Invoice # E37552

Project #

Lab Code 5037552E

Sample ID MW-3

Sample Matrix Water

Sample Date 2/25/2020

	Result	Unit	LOD	LOQ	Dil	Method	Ext Date	Run Date	Analyst	Code
Organic										
PVOC + Naphthalene										
Benzene	< 0.33	ug/l	0.33		1	8260B		3/3/2020	CJR	1
Ethylbenzene	< 0.32	ug/l	0.32		1	8260B		3/3/2020	CJR	1
Methyl tert-butyl ether (MTBE)	< 0.47	ug/l	0.47	1.5	1	8260B		3/3/2020	CJR	1
Naphthalene	< 1.1	ug/l	1.1	3.6	1	8260B		3/3/2020	CJR	1
Toluene	< 0.26	ug/l	0.26	0.83	1	8260B		3/3/2020	CJR	1
1,2,4-Trimethylbenzene	< 0.3	ug/l	0.3	0.96	1	8260B		3/3/2020	CJR	1
1,3,5-Trimethylbenzene	< 0.32	ug/l	0.32		1	8260B		3/3/2020	CJR	1
m&p-Xylene	< 1.1	ug/l	1.1	3.3	1	8260B		3/3/2020	CJR	1
o-Xylene	< 0.38	ug/l	0.38	1.2	1	8260B		3/3/2020	CJR	1

Lab Code 5037552F

Sample ID MW-1R

Sample Matrix Water

Sample Date 2/25/2020

	Result	Unit	LOD	LOQ	Dil	Method	Ext Date	Run Date	Analyst	Code
Inorganic										
Metals										
Lead, Dissolved	< 1.1	ug/L	1.1	3.7	1	7421		3/10/2020	CWT	1

Organic										
PVOC + Naphthalene										
Benzene	207	ug/l	1.65	5	5	8260B		3/4/2020	CJR	1
Ethylbenzene	320	ug/l	1.6	5	5	8260B		3/4/2020	CJR	1
Methyl tert-butyl ether (MTBE)	< 2.35	ug/l	2.35	7.5	5	8260B		3/4/2020	CJR	1
Naphthalene	29.7	ug/l	5.5	18	5	8260B		3/4/2020	CJR	1
Toluene	14.9	ug/l	1.3	4.15	5	8260B		3/4/2020	CJR	1
1,2,4-Trimethylbenzene	45	ug/l	1.5	4.8	5	8260B		3/4/2020	CJR	1
1,3,5-Trimethylbenzene	< 1.6	ug/l	1.6	5	5	8260B		3/4/2020	CJR	1
m&p-Xylene	42	ug/l	5.5	16.5	5	8260B		3/4/2020	CJR	1
o-Xylene	2.3 "J"	ug/l	1.9	6	5	8260B		3/4/2020	CJR	1

Project Name ELLIS HAND CAR WASH

Invoice # E37552

Project #

Lab Code 5037552G

Sample ID TB

Sample Matrix Water

Sample Date 2/25/2020

	Result	Unit	LOD	LOQ	Dil	Method	Ext Date	Run Date	Analyst	Code
Organic										
PVOC + Naphthalene										
Benzene	< 0.33	ug/l	0.33		1	1	8260B	3/3/2020	CJR	1
Ethylbenzene	< 0.32	ug/l	0.32		1	1	8260B	3/3/2020	CJR	1
Methyl tert-butyl ether (MTBE)	< 0.47	ug/l	0.47		1.5	1	8260B	3/3/2020	CJR	1
Naphthalene	< 1.1	ug/l	1.1		3.6	1	8260B	3/3/2020	CJR	1
Toluene	< 0.26	ug/l	0.26		0.83	1	8260B	3/3/2020	CJR	1
1,2,4-Trimethylbenzene	< 0.3	ug/l	0.3		0.96	1	8260B	3/3/2020	CJR	1
1,3,5-Trimethylbenzene	< 0.32	ug/l	0.32		1	1	8260B	3/3/2020	CJR	1
m&p-Xylene	< 1.1	ug/l	1.1		3.3	1	8260B	3/3/2020	CJR	1
o-Xylene	< 0.38	ug/l	0.38		1.2	1	8260B	3/3/2020	CJR	1

"J" Flag: Analyte detected between LOD and LOQ

LOD Limit of Detection

LOQ Limit of Quantitation

Code	Comment
------	---------

1	Laboratory QC within limits.
---	------------------------------

CWT denotes sub contract lab - Certification #445126660

All solid sample results reported on a dry weight basis unless otherwise indicated. All LOD's and LOQ's are adjusted for dilutions but not dry weight. Subcontracted results are denoted by SUB in the analyst field.

Authorized Signature

*Michael Ricker*

## Environmental Lab, Inc.

1990 Prospect Ct. • Appleton, WI 54914  
920-830-2455 • FAX 920-733-0631

### Sample Handling Request

Rush Analysis Date Required \_\_\_\_\_  
(Rushes accepted only with prior authorization)  
 Normal Turn Around

Lab I.D. #	
Account No.:	Quote No.:
Project #:	
Sampler: (signature) <i>fd ZM</i>	

Project (Name / Location): <i>Ellis hand car wash / Milwaukee, WI</i>	
Reports To: <i>Donald Miller</i>	Invoice To: <i>Donald Miller</i>
Company <i>New Hope Missionary Baptist Church of Milwaukee</i>	Company <i>Go METCO</i>
Address <i>2433 W. Roosevelt Dr.</i>	Address <i>709 Gillette St. Ste #3</i>
City State Zip <i>Milwaukee, WI 53209</i>	City State Zip <i>L. Crosse, WI 54603</i>
Phone	Phone <i>608 781 8879</i>
FAX	FAX

Analysis Requested		Other Analysis													
DRO (Mod DRO Sep 95)	GRO (Mod GRO Sep 96)	LEAD (Disolved)	NITRATE/NITRITE	OIL & GREASE	PAH (EPA 8270)	PCB	PVOC (EPA 8021)	PVOC + NAPHTHALENE	SULFATE	TOTAL SUSPENDED SOLIDS	VOC DW (EPA 524.2)	VOC (EPA 8260)	8-PCPA METALS	PID/FID	

Lab I.D.	Sample I.D.	Collection Date	Time	Comp	Grab	Filtered Y/N	No. of Containers	Sample Type (Matrix)*	Preservation
<i>50375521</i>	<i>MW-6</i>	<i>2-25</i>	<i>12:15</i>		<i>X</i>	<i>N</i>	<i>3</i>	<i>GW</i>	<i>HCL</i>
	<i>MW-4</i>		<i>17:30</i>						
	<i>MW-5</i>		<i>1:40</i>						
	<i>MW-2R</i>		<i>1:30</i>						
	<i>MW-3</i>		<i>1:45</i>						
	<i>MW-1R</i>		<i>2:00</i>			<i>Y/N</i>	<i>4</i>	<i>GW</i>	<i>HNO3/HCL</i>
	<i>TB</i>		<i>-</i>			<i>N</i>	<i>1</i>	<i>-</i>	<i>HCL</i>

Comments/Special Instructions ("Specify groundwater "GW", Drinking Water "DW", Waste Water "WW", Soil "S", Air "A", Oil, Sludge etc.)  
 \* Lab to send copy of Report to METCO / Jason P. (Invoice to METCO)  
 \* UTC Rate Apply  
 \* Agent status

Sample Integrity - To be completed by receiving lab. Method of Shipment: <i>GDPA</i> Temp. of Temp. Blank: <i>G On Ice</i> Cooler seal intact upon receipt: <i>Yes</i> No	Relinquished By: (sign) <i>[Signature]</i>	Time <i>9:00</i>	Date <i>2-27-20</i>	Received By: (sign) _____	Time _____	Date _____
	Received in Laboratory By: <i>[Signature]</i>					
					Time: <i>8:00 AM</i>	Date: <i>2-28-20</i>