

Received 08-12-14

LETTER OF TRANSMITTAL



12075 N. Corporate Parkway Phone: 262-241-3133
Suite 200 Direct Line: 262-643-9171
Mequon, Wisconsin 53092 FAX: 262-241-4901

DATE 8/7/14 PROJECT : 193700646
ATTENTION: Kristin DuFresne
RE: BRRS #02-05-521419 NEW INFORMATION

TO: Kristin DuFresne
WDNR
2984 Shawano Ave.
Green Bay, WI 54313-6727

WE ARE SENDING YOU:

- Attached
- Shop drawings
- Copy of letter
- Change order
-
- Under separate cover
- Specifications
- Samples

1	Site Figure
1	Water level table
1	Groundwater VOC concentrations table
1	Inorganic groundwater quality table

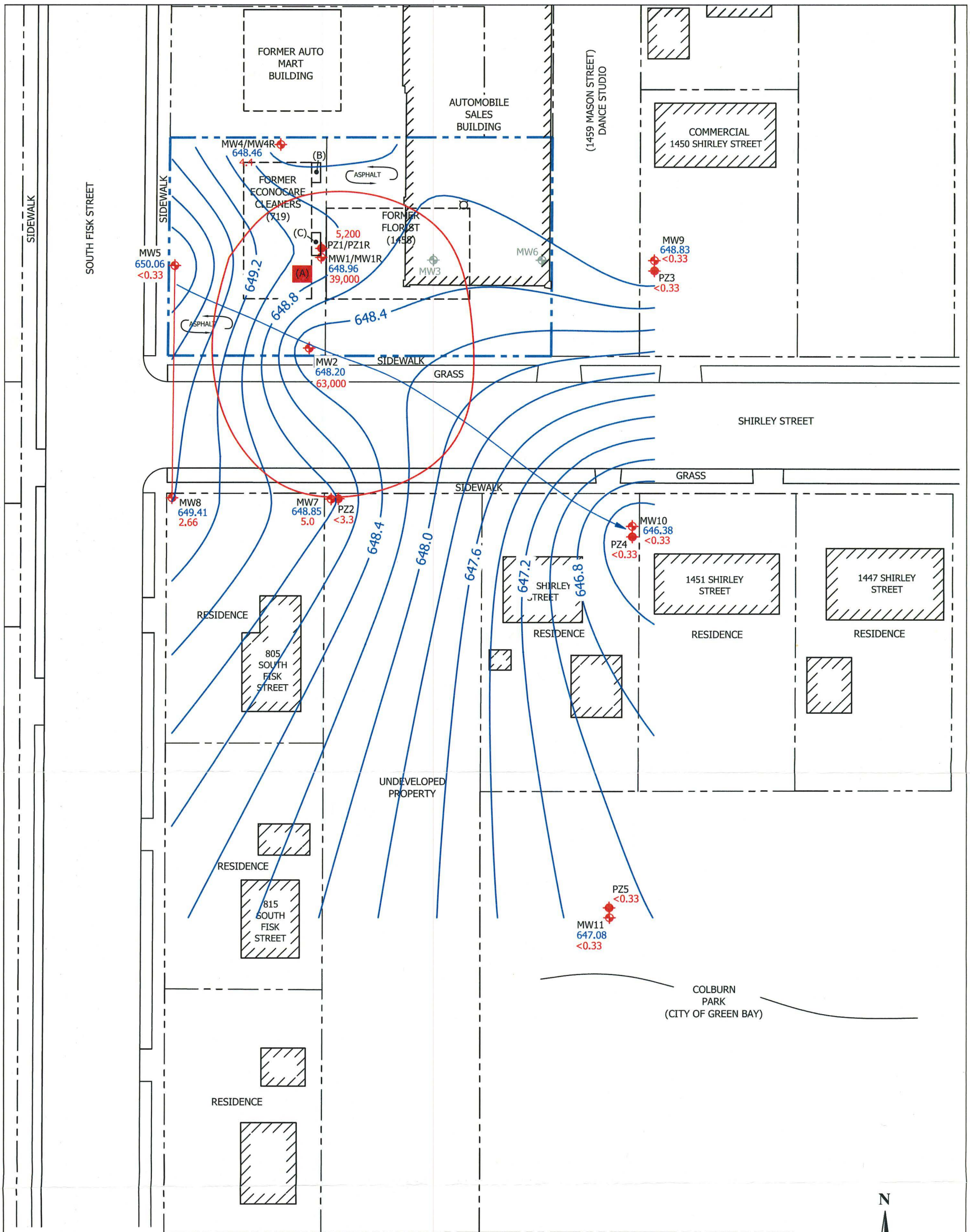
Kristin,

As requested I have enclosed the update summary of groundwater data collected at the former Econocare Cleaners site located at 719 Fisk Street, Green Bay, WI (BRRS #02-05-521419). Please contact me to discuss options moving forward.

Thanks.

COPY TO: file

SIGNED: 
Christopher C. Hatfield



LEGEND

- SUBJECT PROPERTY LINE
- PROPERTY LINE
- GROUNDWATER CONTOUR LINE WITH GROUNDWATER ELEVATION (FT)
- GROUNDWATER FLOW DIRECTION
- GROUNDWATER CONTAINING PCE CONCENTRATIONS EXCEEDING NR140 S

ND = NOT HISTORICALLY DETECTED

- MW1 648.96 39,000 GROUNDWATER MONITORING WELL LOCATION & GROUNDWATER ELEVATION (FT) & PCE CONCENTRATION IN GROUNDWATER (MICROGRAMS PER LITER)
- MW3 FORMER GROUNDWATER MONITORING WELL LOCATION
- PZ5 <0.33 PIEZOMETER LOCATION PCE CONCENTRATION IN GROUNDWATER (MICROGRAMS PER LITER)

FORMER OBJECTS

- (A) FORMER DRYCLEANING MACHINE LOCATION
- (B) FORMER VACUUM
- (C) FORMER SHED

NOTE:
MAP BASED ON ALPHA TERRA "BORING LOCATIONS AND SOIL CHEMISTRY RESULTS"
(DATED 12/23/03) AND PLAN VIEW OBTAINED THROUGH DIGGERS HOTLINE



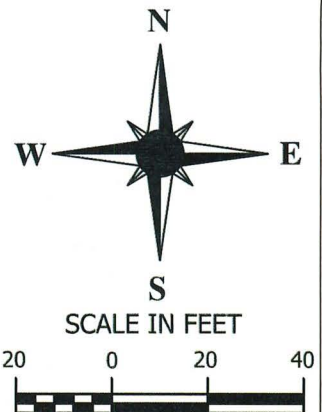
12075 CORPORATE PKWY, STE 200
MEQUON, Wisconsin 53092
P: 262-241-4466 F: 262-241-4901

This drawing and all information contained thereon is the property of Stantec. Stantec will not be held liable for improper or incorrect usage. Professional seals and signatures do not apply to electronic drawing files. The user assumes all responsibility and risk for the accuracy and verification of all information contained in electronic files.

DATE: 07/21/14 DRAWN BY: JRB REVISED:

**GROUNDWATER ELEVATION CONTOUR MAP
& EXTENT OF PCE IN GROUNDWATER
JUNE 19, 2014**

FORMER ECONOCARE CLEANERS
719 SOUTH FISK STREET
GREEN BAY, WISCONSIN



PROJECT NUMBER: 193700646 FIGURE 3

Table 2 Groundwater Analytical Results, Former EconoCare Cleaners, Green Bay, Wisconsin

Well ID	Date Sampled	Water Table Elevation (feet below grade)	Relevant and Significant Volatile Organic Compounds Analytical Results (micrograms per liter)													
			Benzene	Chloromethane	1,2-Dichlorobenzene	1,1-Dichloroethene	cis-1,2-Dichloroethene	trans-1,2-Dichloroethene	Ethylbenzene	Methyl-Tert-Butyl-Ether	Tetrachloroethene (PCE)	Toluene	Trichloroethene (TCE)	Trimethylbenzene	Vinyl Chloride	Xylenes
Chapter NR 140, Wisconsin Administrative Code PAL			0.5	0.3	60	0.7	7	20	140	12	0.5	200	0.5	96	0.02	1000
Chapter NR 140, Wisconsin Administrative Code ES			5	3	600	7	70	100	700	60	5	1000	5	480	0.2	10,000
MW1	07/09/04	---	< 291	< 358	880	---	< 252	< 288	---	---	44,200	< 271	< 232	< 783	---	---
	10/19/05	---	< 200	< 200	< 200	---	< 500	< 500	---	---	57,000	< 200	< 200	< 400	---	---
	06/15/06	---	< 4.0	< 4.0	< 4.0	---	< 10	< 10	---	---	1200	< 4.0	< 4.0	< 8.0	---	---
	12/5&6/06	---	< 5.0	< 5.0	< 5.0	---	< 12	< 12	---	---	50,000	< 5.0	23	< 10.0	---	---
	03/27/09	653.73	< 12	< 25	< 44	< 25	< 22	< 30.5	< 17.5	< 35	2950	< 19.5	< 23.5	< 37	< 10	< 83.5
	06/26/09	650.52	< 20.5	< 25	< 33	< 23.5	< 34	< 30.5	< 43.5	< 25	1470	< 25.5	< 19.5	< 130	< 10	< 106.5
	* 06/26/09	650.52	< 20.5	< 25	< 33	< 23.5	< 34	< 30.5	< 43.5	< 25	1010	< 25.5	< 19.5	< 130	< 10	< 106.5
	09/29/09	647.81	<205	<250	<330	<235	<340	<305	<435	<250	20,300	<255	<195	<1300	<100	<1065
	12/08/09	649.78	<82	<100	<132	<94	<136	<122	<174	<100	6000	<102	<78	<520	<40	<426
	03/30/10	649.77	<41	<50	<66	<47	<68	<61	<87	<50	420	<51	<39	<260	<20	<213
07/13/10	651.98	<76	<240	<168	<140	<156	<260	<110	<50	420	<144	<78	<240	<38	<324	
MW1R	06/19/14	648.96	<240	<810	<360	<400	<380	<350	<550	<230	39,000	<690	<330	<3600	<180	<1320
	6/19/2014*	648.96	<240	<810	<360	<400	<380	<350	<550	<230	39,000	<690	<330	<3600	<180	<1320
MW2	07/08/04	---	< 291	< 356	< 741	---	< 252	< 288	---	---	122,000	< 271	< 232	< 783	---	---
	10/19/05	---	< 400	< 400	< 400	---	< 1000	< 1000	---	---	120,000	< 400	< 400	< 800	---	---
	06/16/06	---	< 400	< 400	< 400	---	< 1000	< 1000	---	---	80,000	< 400	< 400	< 800	---	---
	12/5&6/06	---	< 320	< 320	< 320	---	< 800	< 800	---	---	80,000	< 320	< 320	< 640	---	---
	03/27/09	651.65	< 0.24	< 50	< 88	< 50	< 44	< 61	< 35	< 70	7800	< 39	< 47	< 74	< 20	< 167
	06/26/09	649.44	< 41	< 50	< 66	< 47	< 68	< 61	< 87	< 50	131,000	< 51	63 "J"	< 260	< 20	< 213
	09/29/09	647.41	<410	<500	<660	<470	<680	<610	<870	<500	92,000	<510	<390	<2600	<200	<2130
	12/08/09	649.07	<410	<500	<660	<470	<680	<610	<870	<500	108,000	<510	<390	<2600	<200	<2130
	03/30/10	649.67	<410	<500	<660	<470	<680	<610	<870	<500	101,000	<510	<390	<2600	<200	<2130
	07/13/10	650.58	<380	<1200	<840	<700	<780	<1300	<550	<250	177,000	<720	<390	<1200	<190	<1620
	07/07/11	649.24	<500	<1900	<760	<600	<740	<790	<780	<800	108,000	<530	<470	<1540	<180	<1900
	7/7/2011*	649.24	<2500	<9500	<4350	<3000	<3700	<3950	<3900	<4000	81,000	<2650	<2350	<7700	<900	<9500
06/19/14	648.20	<240	<810	<360	<400	<380	<350	<550	<230	63,000	<690	<330	<3600	<180	<1320	
MW3	07/08/04	---	5.3	< 3.56	< 7.41	---	< 2.52	< 2.88	---	---	80.2	< 2.71	< 2.32	5.0 "J"	---	---
	10/19/05	---	< 0.80	< 0.80	< 0.80	---	< 2.0	< 2.0	---	---	170	< 0.80	< 0.80	< 1.6	---	---
	06/15/06	---	< 0.40	< 1.0	< 0.40	---	< 1.0	< 1.0	---	---	94	< 0.40	< 0.40	< 0.80	---	---

Table 2 Groundwater Analytical Results, Former EconoCare Cleaners, Green Bay, Wisconsin

Well ID	Date Sampled	Water Table Elevation (feet below grade)	Relevant and Significant Volatile Organic Compounds Analytical Results (micrograms per liter)													
			Benzene	Chloromethane	1,2-Dichlorobenzene	1,1-Dichloroethene	cis-1,2-Dichloroethene	trans-1,2-Dichloroethene	Ethylbenzene	Methyl-Tert-Butyl-Ether	Tetrachloroethene (PCE)	Toluene	Trichloroethene (TCE)	Trimethylbenzene	Vinyl Chloride	Xylenes
Chapter NR 140, Wisconsin Administrative Code PAL			0.5	0.3	60	0.7	7	20	140	12	0.5	200	0.5	96	0.02	1000
Chapter NR 140, Wisconsin Administrative Code ES			5	3	600	7	70	100	700	60	5	1000	5	480	0.2	10,000
	12/5&6/06	---	< 0.40	< 0.40	< 0.40	---	< 1.0	< 1.0	---	---	200	< 0.40	< 0.40	< 0.80	---	---
	03/27/09	653.43	< 0.24	< 0.5	< 0.88	< 0.5	< 0.44	< 0.61	< 0.35	< 0.7	55	< 0.39	< 0.47	< 0.74	< 0.2	< 1.67
	06/26/09	649.75	< 0.41	< 0.5	< 0.66	< 0.47	< 0.68	< 0.61	< 0.87	< 0.5	45	< 0.51	< 0.39	< 2.6	< 0.2	< 2.13
	09/29/09	647.33	< 0.41	< 0.5	< 0.66	< 0.47	< 0.68	< 0.61	< 0.87	< 0.5	196	< 0.51	< 0.39	< 2.6	< 0.2	< 2.13
	12/08/09	648.92	< 2.05	< 2.5	< 3.3	< 2.35	< 3.4	< 3.05	< 4.35	< 2.5	82	< 2.55	< 1.95	< 13	< 1	< 10.65
	03/30/10	650.19	< 0.41	< 0.5	< 0.66	< 0.47	< 0.68	< 0.61	< 0.87	< 0.5	64	< 0.51	< 0.39	< 2.6	< 0.2	< 2.13
	07/13/10	651.25	< 0.38	< 1.2	< 0.84	< 0.70	< 0.78	< 1.3	< 0.55	< 0.25	38	< 0.72	< 0.39	< 1.20	< 0.19	< 1.62
MW4	07/08/04	---	< 0.291	< 0.356	< 0.741	---	< 0.252	< 0.288	---	---	3.42	0.670 "J"	< 0.232	< 0.783	---	---
	10/19/05	---	< 0.20	< 0.20	< 0.20	---	< 0.50	< 0.50	---	---	4.6	< 0.20	< 0.20	< 0.40	---	---
	06/15/06	---	< 0.20	0.61 "J"	< 0.20	---	< 0.50	< 0.50	---	---	2.5	< 0.20	< 0.20	< 0.40	---	---
	12/5&6/06	---	< 0.20	< 0.20	< 0.20	---	< 0.50	< 0.50	---	---	3.5	< 0.20	< 0.20	< 0.40	---	---
	03/27/09	652.36	< 0.24	< 0.5	< 0.88	< 0.5	< 0.44	< 0.61	< 0.35	< 0.7	1.61	< 0.39	< 0.47	< 0.74	< 0.2	< 1.67
	06/26/09	650.66	< 0.41	< 0.5	< 0.66	< 0.47	< 0.68	< 0.61	< 0.87	< 0.5	2.57	< 0.51	< 0.39	< 2.6	< 0.2	< 2.13
	09/29/09	647.73	< 0.41	< 0.5	< 0.66	< 0.47	< 0.68	< 0.61	< 0.87	< 0.5	5.4	< 0.51	< 0.39	< 2.6	< 0.2	< 2.13
	12/08/09	649.81	< 0.41	< 0.5	< 0.66	< 0.47	< 0.68	< 0.61	< 0.87	< 0.5	2.31	< 0.51	< 0.39	< 2.6	< 0.2	< 2.13
	03/30/10	650.89	< 0.41	< 0.5	< 0.66	< 0.47	< 0.68	< 0.61	< 0.87	< 0.5	1.69	< 0.51	< 0.39	< 2.6	< 0.2	< 2.13
	07/13/10	651.92	< 0.38	< 1.2	< 0.84	< 0.7	< 0.78	< 1.3	< 0.55	< 0.25	2.85	< 0.72	< 0.39	< 1.20	< 0.19	< 1.62
MW4R	06/19/14	648.46	< 0.24	< 0.81	< 0.36	< 0.40	< 0.38	< 0.35	< 0.55	< 0.23	4.4	< 0.69	< 0.33	< 3.6	< 0.18	< 1.32
MW5	07/08/04	---	< 0.291	< 0.356	< 0.741	---	< 0.252	< 0.288	---	---	< 0.364	< 0.271	< 0.232	< 0.783	---	---
	10/19/05	---	< 0.20	< 0.20	< 0.20	---	< 0.50	< 0.50	---	---	< 0.50	< 0.20	< 0.20	< 0.40	---	---
	06/15/06	---	< 0.20	< 0.50	< 0.20	---	< 0.50	< 0.50	---	---	< 0.50	< 0.20	< 0.20	< 0.40	---	---
	12/5&6/06	---	< 0.20	< 0.20	< 0.20	---	< 0.50	< 0.50	---	---	< 0.50	0.48 "J"	< 0.20	< 0.40	---	---
	03/27/09	651.76	< 0.24	< 0.5	< 0.88	< 0.5	< 0.44	< 0.61	< 0.35	< 0.7	< 0.5	< 0.39	< 0.47	< 0.74	< 0.2	< 1.67
	06/26/09	650.31	< 0.41	< 0.5	< 0.66	< 0.47	< 0.68	< 0.61	< 0.87	< 0.5	< 0.42	< 0.51	< 0.39	< 2.6	< 0.2	< 2.13
	07/07/11	650.66	< 0.5	< 1.9	< 0.76	< 0.6	< 0.74	< 0.79	< 0.78	< 0.8	< 0.44	< 0.53	< 0.47	< 1.54	< 0.18	< 1.9
	06/19/14	650.06	< 0.24	< 0.81	< 0.36	< 0.40	< 0.38	< 0.35	< 0.55	< 0.23	< 0.33	< 0.69	< 0.33	< 3.6	< 0.18	< 1.32
MW6	10/19/05	---	< 0.20	< 0.20	< 0.20	---	< 0.50	< 0.50	---	---	34	< 0.20	0.65	< 0.40	---	---
	06/15/06	---	< 0.20	0.52 "J"	< 0.20	---	< 0.50	< 0.50	---	---	20	< 0.20	0.53	< 0.40	---	---
	12/5&6/06	---	< 0.20	< 0.20	< 0.20	---	0.66 "J"	< 0.50	---	---	47	< 0.20	1.0	< 0.40	---	---

Table 2 Groundwater Analytical Results, Former EconoCare Cleaners, Green Bay, Wisconsin

Well ID	Date Sampled	Water Table Elevation (feet below grade)	Relevant and Significant Volatile Organic Compounds Analytical Results (micrograms per liter)													
			Benzene	Chloromethane	1,2-Dichlorobenzene	1,1-Dichloroethene	cis-1,2-Dichloroethene	trans-1,2-Dichloroethene	Ethylbenzene	Methyl-Tert-Butyl-Ether	Tetrachloroethene (PCE)	Toluene	Trichloroethene (TCE)	Trimethylbenzene	Vinyl Chloride	Xylenes
Chapter NR 140, Wisconsin Administrative Code PAL			0.5	0.3	60	0.7	7	20	140	12	0.5	200	0.5	96	0.02	1000
Chapter NR 140, Wisconsin Administrative Code ES			5	3	600	7	70	100	700	60	5	1000	5	480	0.2	10,000
	03/27/09	650.64	< 0.24	< 0.5	< 0.88	< 0.5	< 0.44	< 0.61	< 0.35	< 0.7	23.7	< 0.39	0.70 "J"	< 0.74	< 0.2	< 1.67
	06/26/09	648.39	< 0.41	< 0.5	< 0.66	< 0.47	< 0.68	< 0.61	< 0.87	< 0.5	80	< 0.51	1.1 "J"	< 2.6	< 0.2	< 2.13
	09/29/09	647.02	< 0.41	< 0.5	< 0.66	< 0.47	< 0.68	< 0.61	< 0.87	< 0.5	37	< 0.51	1.24	< 2.6	< 0.2	< 2.13
	12/08/09	647.56	< 0.41	< 0.5	< 0.66	< 0.47	< 0.68	< 0.61	< 0.87	< 0.5	25.8	< 0.51	0.81 "J"	< 2.6	< 0.2	< 2.13
	03/30/10	648.69	< 0.41	< 0.5	< 0.66	< 0.47	< 0.68	< 0.61	< 0.87	< 0.5	18.3	< 0.51	0.73 "J"	< 2.6	< 0.2	< 2.13
	07/13/10	649.64	<0.38	<1.2	<0.84	<0.7	<0.78	<1.3	<0.55	<0.25	47	<0.72	1.24	<1.20	<0.19	<1.62
MW7	10/19/05	---	< 8.0	< 1.6	< 8.0	---	< 20	< 20	---	---	5900	< 8.0	130	< 1.6	---	---
	06/16/06	---	< 0.80	< 1.6	< 0.80	---	2.2 "J"	< 2.0	---	---	200	< 0.80	18	< 1.6	---	---
	12/5&6/06	---	< 0.80	< 1.6	< 0.80	---	49	< 2.0	---	---	3300	< 0.80	290	< 1.6	---	---
	03/27/09	649.98	< 0.24	< 0.5	< 0.88	< 0.5	1.82	< 0.61	< 0.35	< 0.7	75	< 0.39	4.5	< 0.74	< 0.2	< 1.67
	06/26/09	648.25	< 0.41	< 0.5	< 0.66	< 0.47	21.1	< 0.61	< 0.87	< 0.5	938	< 0.51	74	< 2.6	< 0.2	< 2.13
	09/29/09	646.71	< 41	< 50	< 66	< 47	< 68	< 61	< 87	< 50	8900	< 51	350	< 260	< 20	< 213
*	09/29/09	646.71	<410	<500	<660	<470	<680	<610	<870	<500	12,200	<510	440 "J"	<2600	<200	<2130
	12/08/09	648.25	< 41	< 50	< 66	< 47	86 "J"	< 61	< 87	< 50	5600	< 51	400	< 260	< 20	< 213
*	12/08/09	648.25	<410	<500	<660	<470	<680	<610	<870	<500	5900	<510	400 "J"	<2600	<200	<2130
	03/30/10	648.59	< 41	< 50	< 66	< 47	< 68	< 61	< 87	< 50	1170	< 51	133	< 260	< 20	< 213
*	03/30/10	648.59	<20.5	<25	<33	<23.5	49 "J"	<30.5	<43.5	<25	1070	<25.5	112	<130	<10	<106.5
	07/13/10	649.89	<0.38	<1.2	<0.84	<0.7	5.5	<1.3	<0.55	<0.25	59	<0.72	14.4	<1.20	<0.19	<1.62
*	07/13/10	649.89	<0.38	<1.2	<0.84	<0.7	5.6	<1.3	<0.55	<0.25	57	<0.72	14.9	<1.20	<0.19	<1.62
	07/07/11	648.64	<0.5	<1.9	<0.76	<0.6	15.3	<0.79	<0.78	<0.8	7.3	<0.53	10.7	<1.54	<0.18	<1.9
	06/19/14	648.85	<0.24	<0.81	<0.36	<0.40	7.8	<0.35	<0.55	<0.23	5.0	<0.69	13.5	<3.6	<0.18	<1.32
MW8	10/19/05	---	< 0.20	< 0.20	< 0.20	---	< 0.50	< 0.50	---	---	6.4	< 0.20	0.23 "J"	< 0.40	---	---
	06/16/06	---	< 0.20	0.61 "J"	< 0.20	---	< 0.50	< 0.50	---	---	4.9	< 0.20	0.38 "J"	< 0.40	---	---
	12/5&6/06	---	< 0.20	< 0.20	< 0.20	---	< 0.20	< 0.20	---	---	3.4	< 0.20	0.53 "J"	< 0.40	---	---
	03/27/09	650.31	< 0.24	< 0.5	< 0.88	< 0.5	< 0.44	< 0.61	< 0.35	< 0.7	0.75 "J"	< 0.39	< 0.47	< 0.74	< 0.2	< 1.67
	06/26/09	648.98	< 0.41	< 0.5	< 0.66	< 0.47	< 0.68	< 0.61	< 0.87	< 0.5	4.4	< 0.51	0.48 "J"	< 2.6	< 0.2	< 2.13
	09/29/09	647.53	< 0.41	< 0.5	< 0.66	< 0.47	< 0.68	< 0.61	< 0.87	< 0.5	4.7	< 0.51	0.45 "J"	< 2.6	< 0.2	< 2.13
	12/08/09	648.74	< 0.41	< 0.5	< 0.66	< 0.47	< 0.68	< 0.61	< 0.87	< 0.5	6.0	< 0.51	0.89 "J"	< 2.6	< 0.2	< 2.13
	03/30/10	649.11	< 0.41	< 0.5	< 0.66	< 0.47	< 0.68	< 0.61	< 0.87	< 0.5	3.7	< 0.51	0.47 "J"	< 2.6	< 0.2	< 2.13

Table 2 Groundwater Analytical Results, Former EconoCare Cleaners, Green Bay, Wisconsin

Well ID	Date Sampled	Water Table Elevation (feet below grade)	Relevant and Significant Volatile Organic Compounds Analytical Results (micrograms per liter)													
			Benzene	Chloromethane	1,2-Dichlorobenzene	1,1-Dichloroethene	cis-1,2-Dichloroethene	trans-1,2-Dichloroethene	Ethylbenzene	Methyl-Tert-Butyl-Ether	Tetrachloroethene (PCE)	Toluene	Trichloroethene (TCE)	Trimethylbenzene	Vinyl Chloride	Xylenes
Chapter NR 140, Wisconsin Administrative Code PAL			0.5	0.3	60	0.7	7	20	140	12	0.5	200	0.5	96	0.02	1000
Chapter NR 140, Wisconsin Administrative Code ES			5	3	600	7	70	100	700	60	5	1000	5	480	0.2	10,000
	07/13/10	650.19	<0.38	<1.2	<0.84	<0.7	<0.78	<1.3	<0.55	<0.25	1.53	<0.72	<0.39	<1.20	<0.19	<1.62
	07/07/11	649.23	<0.5	<1.9	<0.76	<0.6	<0.74	<0.79	<0.78	<0.8	3.5	<0.53	<0.47	<1.54	<0.18	<1.9
	06/19/14	649.41	<0.24	<0.81	<0.36	<0.40	<0.38	<0.35	<0.55	<0.23	2.66	<0.69	<0.33	<3.6	<0.18	<1.32
MW9	06/17/06	---	< 0.20	0.61 "J"	< 0.20	---	1.1 "J"	< 0.50	---	---	4.7	< 0.20	0.98	< 0.40	---	---
	12/5&6/06	---	< 0.20	< 0.20	< 0.20	---	< 0.50	< 0.50	---	---	2.8	< 0.20	0.33 J	< 0.40	---	---
	03/27/09	649.37	< 0.24	< 0.5	< 0.88	< 0.5	< 0.44	< 0.61	< 0.35	< 0.7	3.09	< 0.39	< 0.47	< 0.74	< 0.2	< 1.67
	06/26/09	647.15	< 0.41	< 0.5	< 0.66	< 0.47	< 0.68	< 0.61	< 0.87	< 0.5	5.4	< 0.51	< 0.39	< 2.6	< 0.2	< 2.13
	09/29/09	646.54	< 0.41	< 0.5	< 0.66	< 0.47	< 0.68	< 0.61	< 0.87	< 0.5	4.0	< 0.51	< 0.39	< 2.6	< 0.2	< 2.13
	12/08/09	646.98	< 0.41	< 0.5	< 0.66	< 0.47	< 0.68	< 0.61	< 0.87	< 0.5	2.6	< 0.51	< 0.39	< 2.6	< 0.2	< 2.13
	03/30/10	647.69	< 0.41	< 0.5	< 0.66	< 0.47	< 0.68	< 0.61	< 0.87	< 0.5	2.26	< 0.51	< 0.39	< 2.6	< 0.2	< 2.13
	07/13/10	648.83	<0.38	<1.2	<0.84	<0.7	<0.78	<1.3	<0.55	<0.25	4.3	<0.72	<0.39	<1.20	<0.19	<1.62
	07/07/11	647.93	<0.5	<1.9	<0.76	<0.6	<0.74	<0.79	<0.78	<0.8	6.4	<0.53	0.66 J	<1.54	<0.18	<1.9
	06/19/14	648.83	<0.24	<0.81	<0.36	<0.40	<0.38	<0.35	<0.55	<0.23	<0.33	<0.69	<0.33	<3.6	<0.18	<1.32
MW10	06/29/06	---	< 0.20	< 0.20	< 0.20	---	< 0.50	< 0.50	---	---	< 0.50	< 0.20	< 0.20	< 0.40	---	---
	12/5&6/06	---	< 0.20	< 0.20	< 0.20	---	< 0.50	< 0.50	---	---	< 0.50	< 0.20	< 0.20	< 0.40	---	---
	03/27/09	647.29	< 0.24	< 0.5	< 0.88	< 0.5	< 0.44	< 0.61	< 0.35	< 0.7	< 0.5	< 0.39	< 0.47	< 0.74	< 0.2	< 1.67
	06/26/09	645.66	< 0.41	< 0.5	< 0.66	< 0.47	< 0.68	< 0.61	< 0.87	< 0.5	< 0.42	< 0.51	< 0.39	< 2.6	< 0.2	< 2.13
	07/07/11	645.83	<0.5	<1.9	<0.76	<0.6	<0.74	<0.79	<0.78	<0.8	<0.44	<0.53	<0.47	<1.54	<0.18	<1.9
	06/19/14	646.38	<0.24	<0.81	<0.36	<0.40	<0.38	<0.35	<0.55	<0.23	<0.33	<0.69	<0.33	<3.6	<0.18	<1.32
MW11	06/16/06	---	< 0.20	< 1.0	< 0.20	---	< 0.50	< 0.50	---	---	< 0.50	< 0.20	< 0.20	< 0.40	---	---
	12/5&6/06	---	< 0.20	< 0.20	< 0.20	---	< 0.50	< 0.50	---	---	< 0.50	< 0.20	< 0.20	< 0.40	---	---
	03/27/09	647.33	< 0.24	< 0.5	< 0.88	< 0.5	< 0.44	< 0.61	< 0.35	< 0.7	< 0.5	< 0.39	< 0.47	< 0.74	< 0.2	< 1.67
	06/26/09	644.42	< 0.41	< 0.5	< 0.66	< 0.47	< 0.68	< 0.61	< 0.87	< 0.5	< 0.42	< 0.51	< 0.39	< 2.6	< 0.2	< 2.13
	07/07/11	645.88	<0.5	<1.9	<0.76	<0.6	<0.74	<0.79	<0.78	<0.8	<0.44	<0.53	<0.47	<1.54	<0.18	<1.9
	06/19/14	647.08	<0.24	<0.81	<0.36	<0.40	<0.38	<0.35	<0.55	<0.23	<0.33	<0.69	<0.33	<3.6	<0.18	<1.32
PZ1	07/09/04	---	< 2.91	< 3.56	< 7.41	---	6.4 "J"	< 2.86	---	---	1470	9.20 "J"	11.6	< 7.83	---	---
	10/19/05	---	< 0.20	---	< 0.20	---	1.6 "J"	---	---	---	86	< 0.20	10	< 0.40	---	---
	06/15/06	---	< 0.20	< 1.0	< 0.20	---	7.1	1.2 "J"	---	---	58	< 0.20	23	< 0.40	---	---
	12/5&6/06	---	< 0.20	< 0.20	< 0.20	---	3.4	< 0.50	---	---	30	< 0.20	14	< 0.40	---	---

Table 2 Groundwater Analytical Results, Former EconoCare Cleaners, Green Bay, Wisconsin

Well ID	Date Sampled	Water Table Elevation (feet below grade)	Relevant and Significant Volatile Organic Compounds Analytical Results (micrograms per liter)													
			Benzene	Chloromethane	1,2-Dichlorobenzene	1,1-Dichloroethene	cis-1,2-Dichloroethene	trans-1,2-Dichloroethene	Ethylbenzene	Methyl-Tert-Butyl-Ether	Tetrachloroethene (PCE)	Toluene	Trichloroethene (TCE)	Trimethylbenzene	Vinyl Chloride	Xylenes
Chapter NR 140, Wisconsin Administrative Code PAL			0.5	0.3	60	0.7	7	20	140	12	0.5	200	0.5	96	0.02	1000
Chapter NR 140, Wisconsin Administrative Code ES			5	3	600	7	70	100	700	60	5	1000	5	480	0.2	10,000
PZ1R	03/27/09	653.20	< 0.24	< 0.5	< 0.88	< 0.5	8.2	1.93 "J"	< 0.35	< 0.7	6.8	< 0.39	45	< 0.74	< 0.2	< 1.67
	06/26/09	650.42	< 0.41	< 0.5	< 0.66	< 0.47	7.4	1.89 "J"	< 0.87	< 0.5	14.2	< 0.51	70	< 2.6	< 0.2	< 2.13
	09/29/09	647.91	< 0.41	< 0.5	< 0.66	< 0.47	6.0	2.91	< 0.87	< 0.5	11.7	< 0.51	55	< 2.6	< 0.2	< 2.13
	12/08/09	649.62	< 0.41	< 0.5	< 0.66	< 0.47	8.2	2.51	< 0.87	< 0.5	12.6	< 0.51	62	< 2.6	< 0.2	< 2.13
	03/30/10	650.78	< 0.41	< 0.5	< 0.66	< 0.47	8.4	3.12	< 0.87	< 0.5	61	< 0.51	67	< 2.6	< 0.2	< 2.13
	07/13/10	651.84	< 0.38	< 1.2	< 0.84	< 0.7	7.1	2.07 J	< 0.55	< 0.25	1080	< 0.72	67	< 1.20	< 0.19	< 1.62
	06/19/14	649.10	< 240	< 810	< 360	< 400	< 380	< 350	< 550	< 230	5,200	< 690	< 330	< 3600	< 180	< 1320
PZ2	10/19/05	---	< 1.0	< 0.20	< 1.0	---	< 2.5	< 0.50	---	---	280	< 1.0	30	< 2.0	---	---
	06/16/06	---	< 1.0	< 1.0	< 1.0	---	< 2.5	< 2.5	---	---	360	< 1.0	35	< 2.0	---	---
	12/5&6/06	---	< 1.0	< 1.0	< 1.0	---	9.2	< 2.5	---	---	690	< 1.0	110	< 2.0	---	---
	03/27/09	649.40	< 0.24	< 0.5	< 0.88	0.92 "J"	68	1.87 "J"	< 0.35	0.74 "J"	1970	< 0.39	360	< 0.74	0.41 "J"	< 1.67
	06/26/09	647.94	< 4.1	< 5	< 6.6	< 4.7	191	< 6.1	< 8.7	< 5	1690	< 5.1	380	< 26	< 2	< 21.3
	09/29/09	646.53	< 8.2	< 10	< 13.2	< 9.4	320	< 12.2	< 17.4	< 10	600	< 10.2	420	< 52	< 4	< 42.6
	12/08/09	647.90	< 20.5	< 25	< 33	< 23.5	240	< 30.5	< 43.5	< 25	3700	< 25.5	880	< 130	< 10	< 106.5
	03/30/10	648.26	< 20.5	< 25	< 33	< 23.5	690	< 30.5	< 43.5	< 25	1480	< 25.5	1000	< 130	< 10	< 106.5
	07/13/10	649.07	< 3.8	< 12	< 8.4	< 7	1310	45	< 5.5	< 2.5	340	< 7.2	790	< 12.0	< 1.9	< 16.2
	07/07/11	648.44	< 5	< 19	< 7.6	< 6	1160	12.8 "J"	< 7.8	< 8	44	< 5.3	45	< 15.4	< 1.8	< 19
06/19/14	648.43	< 2.4	< 8.1	< 3.6	< 4.0	340	5.4 "J"	< 5.5	< 2.3	< 3.3	< 6.9	9.8 "J"	< 36	< 1.8	< 13.2	
PZ3	06/29/06	---	< 0.20	< 0.20	< 0.20	---	< 0.50	< 0.50	---	---	< 0.50	< 0.20	< 0.20	< 0.40	---	---
	12/5&6/06	---	< 0.20	< 0.20	< 0.20	---	< 0.20	< 0.20	---	---	< 0.50	< 0.20	< 0.20	< 0.40	---	---
	03/27/09	642.69	< 0.24	< 0.5	< 0.88	< 0.5	< 0.44	< 0.61	< 0.35	< 0.7	< 0.5	< 0.39	< 0.47	< 0.74	< 0.2	< 1.67
	06/26/09	642.54	< 0.41	< 0.5	< 0.66	< 0.47	< 0.68	< 0.61	< 0.87	< 0.5	< 0.42	< 0.51	< 0.39	< 2.6	< 0.2	< 2.13
	07/07/11	645.15	< 0.5	< 1.9	< 0.76	< 0.6	< 0.74	< 0.79	< 0.78	< 0.8	< 0.44	< 0.53	< 0.47	< 1.54	< 0.18	< 1.9
	06/19/14	649.61	< 0.24	< 0.81	< 0.36	< 0.40	< 0.38	< 0.35	< 0.55	< 0.23	< 0.33	< 0.69	< 0.33	< 3.6	< 0.18	< 1.32
PZ4	06/17/06	---	< 0.20	1.2	< 0.20	---	< 0.50	< 0.50	---	---	< 0.50	< 0.20	< 0.20	< 0.40	---	---
	12/5&6/06	---	< 0.20	< 0.20	< 0.20	---	< 0.50	< 0.50	---	---	< 0.50	0.23 "J"	< 0.20	< 0.40	---	---
	03/27/09	646.09	< 0.24	< 0.5	< 0.88	< 0.5	< 0.44	< 0.61	< 0.35	< 0.7	< 0.5	< 0.39	< 0.47	< 0.74	< 0.2	< 1.67
	06/26/09	645.19	< 0.41	< 0.5	< 0.66	< 0.47	< 0.68	< 0.61	< 0.87	< 0.5	< 0.42	< 0.51	< 0.39	< 2.6	< 0.2	< 2.13
	07/07/11	646.06	< 0.5	< 1.9	< 0.76	< 0.6	< 0.74	< 0.79	< 0.78	< 0.8	< 0.44	< 0.53	< 0.47	< 1.54	< 0.18	< 1.9

Table 2 Groundwater Analytical Results, Former EconoCare Cleaners, Green Bay, Wisconsin

Well ID	Date Sampled	Water Table Elevation (feet below grade)	Relevant and Significant Volatile Organic Compounds Analytical Results (micrograms per liter)													
			Benzene	Chloromethane	1,2-Dichlorobenzene	1,1-Dichloroethene	cis-1,2-Dichloroethene	trans-1,2-Dichloroethene	Ethylbenzene	Methyl-Tert-Butyl-Ether	Tetrachloroethene (PCE)	Toluene	Trichloroethene (TCE)	Trimethylbenzene	Vinyl Chloride	Xylenes
Chapter NR 140, Wisconsin Administrative Code PAL			0.5	0.3	60	0.7	7	20	140	12	0.5	200	0.5	96	0.02	1000
Chapter NR 140, Wisconsin Administrative Code ES			5	3	600	7	70	100	700	60	5	1000	5	480	0.2	10,000
	06/19/14	645.60	<0.24	<0.81	<0.36	<0.40	<0.38	<0.35	<0.55	<0.23	<0.33	<0.69	<0.33	<3.6	<0.18	<1.32
PZ5	06/16/06	---	< 0.20	0.51 "J"	< 0.20	---	< 0.50	< 0.50	---	---	< 0.50	< 0.20	< 0.20	< 0.40	---	---
	12/5&6/06	---	< 0.20	< 0.20	< 0.20	---	< 0.50	< 0.50	---	---	< 0.50	< 0.20	< 0.20	< 0.40	---	---
	03/27/09	647.17	< 0.24	< 0.5	< 0.88	0.92 "J"	< 0.44	< 0.61	< 0.35	< 0.7	< 0.5	< 0.39	< 0.47	< 0.74	< 0.2	< 1.67
	06/26/09	644.24	< 0.41	< 0.5	< 0.66	< 0.47	< 0.68	< 0.61	< 0.87	< 0.5	< 0.42	< 0.51	< 0.39	< 2.6	< 0.2	< 2.13
	7/7/2011**	645.84	<2500	<9500	<3800	<3000	<3700	<3950	<3900	<4000	68,000	<2650	<2350	<7700	<900	<9500
	08/02/11	---	<0.5	<1.9	<0.76	<0.6	<0.74	<0.79	<0.78	<0.8	<0.44	<0.53	<0.47	<1.54	<0.18	<1.9
	8/2/2011*	---	<0.5	<1.9	<0.76	<0.6	<0.74	<0.79	<0.78	<0.8	<0.44	<0.53	<0.47	<1.54	<0.18	<1.9
	06/19/14	646.92	<0.24	<0.81	<0.36	<0.40	<0.38	<0.35	<0.55	<0.23	<0.33	<0.69	<0.33	<3.6	<0.18	<1.32

Note:

- "J" = Analyte detected between Limit of Detection and Limit of Quantitation
- = Not Analyzed
- * = Duplicate Sample
- ** = erroneous sample results due to field collection or laboratory error

- XXX = exceeds Chapter NR 140, Wisconsin Administrative Code Preventive Action Limit (PAL)
- XXX = exceeds Chapter NR 140, Wisconsin Administrative Code Enforcement Standard (ES)

Table 3 Inorganic Groundwater Quality Data, Former EconoCare Cleaners, Green Bay, Wisconsin

Well Number	Sample Date	Temperature (°F)	pH (su)	Conductivity (µS/cm)	O.R.P. (mV)	Dissolved Oxygen (mg/l)	Carbon Dioxide (mg/l)	Nitrate +Nitrite (mg/l)	Kjeldahl Nitrogen (µg/l)	Iron (mg/l)	Manganese (mg/l)	Sulfate (mg/l)	Alkalinity (mg/l)	Total Organic Carbon (µg/l)	Ethane (µg/l)	Ethene (µg/l)	Methane (µg/l)	Phosphorus (µg/l)	Total Chloride (mg/l)
MW1	03/27/09	35.74	8.37	166	17.6	19.34	< 10	0.1 J	760	140 J	< 4.8	7.02	60	2200	< 1	< 1	< 2	380	7
	06/26/09	51.49	7.8	372	8.7	4.5	10	0.33	1500	>10	0.35	14.8	220	4600	<1	<1	<1	2200	5.26 "J"
	09/29/09	57.74	6.63	727	47	1.25	35	---	---	---	---	104	---	3200	<1	<1	<1	---	55
	12/08/09	48.02	6.89	157	4	3.97	25	---	---	---	---	18.8	---	---	<1	<1	<1	---	6.47 "J"
	03/30/10	44.03	6.22	513	-116.9	11.16	---	---	---	---	---	44.2	---	---	---	---	---	---	140
	07/13/10	57.95	6.77	323	-64.2	8.03	25	0.39	---	---	---	17.3	---	---	<1	<1	<1	---	<3.4
MW1R	06/19/14	50.05	7.26	1283	146.4	3.20	---	6.44	---	<0.06	---	655	---	1700	<0.5	<0.5	1.7 "J"	---	80.9
MW2	03/27/09	40.35	6.94	667	44.7	26.04	16	1.61	1200	< 60	< 4.8	96.6	340	5700	< 1	< 1	< 2	< 19	158
	09/29/09	60.77	6.59	1670	15.6	0.85	50	---	---	---	---	769	---	5600	<1	<1	2.9 "J"	---	83
	12/08/09	50.48	6.59	1187	15.2	0.93	60	---	---	---	---	858	---	---	<1	<1	3.1	---	90.5
	03/30/10	44.83	5.92	1444	17.4	5.44	---	---	---	---	---	934	---	---	---	---	---	---	99.5
	07/13/10	55.20	6.73	2228	-109.4	4.24	35	15.80	---	---	---	1360	---	---	<1	<1	<1	---	78.5
	07/07/11	51.57	6.73	1563	-20.2	1.78	60	3.20	---	---	---	784	---	---	<1	<1	<1	---	76
	06/19/14	49.50	6.88	1101	214.5	3.43	---	<15.4	---	<0.06	---	162	---	3600	<0.5	<0.5	1.7 "J"	---	154
MW3	03/27/09	38.02	6.9	23.5	23.5	8.17	19	2.84	1100	< 60	< 4.8	305	380	4000	< 1	< 1	< 2	< 19	118
	06/26/09	50.92	6.84	1270	17.3	2.26	90	2.62	190	0	0.1	159	400	3600	< 1	< 1	1.1 "J"	<19	80.4
	09/29/09	59.87	6.6	812	23.9	2.21	30	---	---	---	---	135	---	---	<1	<1	<1	---	69
	12/08/09	47.77	6.49	470	26.4	2.73	25	---	---	---	---	116	---	---	---	---	---	---	77.8
	03/30/10	44.78	5.95	925	15.7	7.89	---	---	---	---	---	289	---	---	---	---	---	---	118
	07/13/10	56.18	6.75	1040	-116.3	2.80	65	1.14	---	---	---	164	---	---	<1	<1	<1	---	67.3
MW4	03/27/09	41.36	6.78	688	50.7	16.97	13	2.04	610	< 60	< 4.8	226	230	2200	< 1	< 1	< 2	< 19	290
	06/26/09	53.99	7.14	807	37.8	6.32	50	1.85	1000	0	0.1	42.1	280	1600	<1	<1	<1	77 "J"	92.1
	09/29/09	60.99	6.72	611	58.6	4.03	35	---	---	---	---	29	---	---	<1	<1	<1	---	79
	12/08/09	49.53	6.58	395	30	3.75	45	---	---	---	---	36.1	---	---	---	---	---	---	83.0
	03/30/10	44.72	5.94	575	-116.7	8.86	---	---	---	---	---	53.7	---	---	---	---	---	---	74.0
	07/13/10	63.40	6.06	834	-4.9	12.10	45	3.47	---	---	---	66	---	---	<1	<1	<1	---	73.3
MW4R	06/19/14	52.00	6.64	971	191.2	1.67	---	6.07	---	<0.06	---	214	---	2900	<0.5	<0.5	<1	---	90.7
MW5	07/07/11	50.92	6.82	668	-13.2	7.00	40	1.2	---	---	---	12.7	---	---	<1	<1	<1	---	47.8
MW6	03/27/09	39.81	6.91	624	-26.7	1.48	15	0.42	400	< 60	10.3	81.9	190	18,000	< 1	< 1	4.8	110	83
	06/26/09	53.66	7.05	839	-12.9	1.46	90	2.19	800	0	0.1	34.8	390	5400	<1	<1	<1	< 19	37.9
	09/29/09	64.26	6.05	441	17.5	0.62	65	---	---	---	---	39	---	---	<1	<1	<1	---	22
	12/08/09	48.55	6.49	366	1.3	1.38	50	---	---	---	---	84.7	---	---	---	---	---	---	30.0
	03/30/10	45.99	6.02	730	-22.7	1.34	---	---	---	---	---	130	---	---	---	---	---	---	38.3
	07/13/10	60.63	6.89	731	-130.4	1.88	60	1.92	---	---	---	39.9	---	---	<1	<1	1.0 J	---	33.3
MW7	03/27/09	42.96	6.84	1116	16.4	5.71	15	< 0.1	310	< 60	24.4	212	700	8500	< 1	< 1	2.6 "J"	< 19	297
	06/26/09	49.2	6.8	2117	-39.1	1.39	>100	< 0.1	590	2	0.3	87.3	600	8800	< 1	< 1	2.8 "J"	110	311
	09/29/09	56.75	6.51	1152	-33.9	0.49	45	---	---	---	---	93	---	2700	<1	<1	<1	---	276
	12/08/09	50.09	6.56	1168	-13.2	0.55	35	---	---	---	---	119	---	---	<1	<1	16.8	---	443
	03/30/10	44.89	6.13	1506	-8.7	1.98	---	---	---	---	---	112	---	---	---	---	---	---	376
	07/13/10	53.16	6.65	1203	-140.5	1.88	>100	0.11 J	---	---	---	69.1	---	---	<1	<1	1.3 J	---	122
	07/07/11	50.82	6.79	1535	-24.2	1.95	60	0.1 J	---	---	---	82.8	---	---	<1	<1	3.7	---	201
	06/19/14	48.09	6.71	859	-64.6	0.06	---	<0.15	---	5.9	---	56.8	---	13000	<0.5	<0.5	28	---	145
MW8	09/29/09	59.07	6.61	6035	-26.6	0.43	50	---	---	---	---	97	---	---	<1	<1	<1	---	233 "J"

Well Number	Sample Date	Temperature (°F)	pH (su)	Conductivity (µS/cm)	O.R.P. (mV)	Dissolved Oxygen (mg/l)	Carbon Dioxide (mg/l)	Nitrate + Nitrite (mg/l)	Kjeldahl Nitrogen (µg/l)	Iron (mg/l)	Manganese (mg/l)	Sulfate (mg/l)	Alkalinity (mg/l)	Total Organic Carbon (µg/l)	Ethane (µg/l)	Ethene (µg/l)	Methane (µg/l)	Phosphorus (µg/l)	Total Chloride (mg/l)	
	12/08/09	50.19	6.69	4795	-104.4	0.77	65	---	---	---	---	88.6	---	---	---	---	---	---	---	173
	03/30/10	43.90	6.34	5892	-59.5	3.09	---	---	---	---	---	81.5	---	---	---	---	---	---	---	2070
	07/13/10	53.56	6.76	6696	-138.2	1.15	65	0.10 J	---	---	---	27.1	---	---	<1	<1	<1	---	---	465
	07/07/11	53.59	6.95	3874	-19.5	2.15	45	<0.1	---	---	---	23.8	---	---	<1	<1	<1	---	---	321
MW9	09/29/09	62.49	6.57	879	-3.5	0.41	50	---	---	---	---	27	---	---	<1	<1	<1	---	---	150
	12/08/09	45.97	6.58	385	-39.1	0.76	60	---	---	---	---	29.1	---	---	---	---	---	---	---	94.3
	03/30/10	41.72	6.04	710	34.7	3.9	---	---	---	---	---	32.2	---	---	---	---	---	---	---	157
	07/13/10	54.65	6.78	927	-137.4	1.34	35	1.14	---	---	---	22.7	---	---	<1	<1	<1	---	---	115
	07/07/11	52.58	6.31	917	-11	1.78	50	2.92	---	---	---	19.0	---	---	<1	<1	<1	---	---	168
MW10	07/07/11	51.29	6.12	1050	-6.7	2.76	---	---	---	---	---	---	---	---	---	---	---	---	---	---
MW11	03/27/09	41.56	7.19	881	11.9	5.34	10	< 0.1	360	150 J	67.3	66	280	8400	< 1	< 1	2.8 J	< 19	---	171
	06/26/09	50.02	6.93	1399	-45.2	1.66	60	< 0.1	390	0.4	0.1	77.6	420	720	<1	<1	<1	53 "J"	---	252
	07/07/11	50.27	5.95	932	3.8	2.13	---	---	---	---	---	---	---	---	---	---	---	---	---	---
PZ1	03/27/09	47.64	7.66	585	41.9	2.97	< 10	< 0.1	180	< 60	7.2	269	270	3500	< 1	< 1	3.8	< 19	---	92.6
	06/26/09	51.85	7.43	624	-23.8	1.51	20	< 0.1	1100	0	0.1	104	240	1300	< 1	< 1	1.4 "J"	31 "J"	---	24.6
	09/29/09	56.59	6.92	495	23.5	1.47	20	---	---	---	---	97	---	---	<1	<1	<1	---	---	30
	12/08/09	48.81	6.90	305	3.4	4.87	20	---	---	---	---	97.1	---	---	---	---	---	---	---	41.6
	03/30/10	47.05	6.37	541	-160.4	1.56	---	---	---	---	---	103	---	---	---	---	---	---	---	73.1
	07/13/10	56.42	6.46	622	-66.6	9.02	25	0.20 J	---	---	---	106	---	---	<1	<1	<1	---	---	52.1
PZ1R	06/19/14	48.13	7.27	1025	157.2	0.08	---	<0.15	---	<0.06	---	626	---	2200	<0.5	<0.5	3.0	---	---	152
PZ2	03/27/09	49.47	7.33	1440	-61.7	1.04	13	< 0.1	65 J	< 60	156	163	350	3900	< 1	< 1	37.9	< 19	---	351
	06/26/09	49.65	6.9	1405	32.7	1.4	55	< 0.1	530	0	0.15	53.4	320	4700	< 1	< 1	1.3 "J"	< 19	---	325
	09/29/09	54.57	6.7	1164	-20.5	1.47	35	---	---	---	---	63	---	2300	<1	<1	<1	---	---	273
	12/08/09	51.38	6.84	657	-41.4	2.31	25	---	---	---	---	89.7	---	---	<1	<1	5.1	---	---	212
	03/30/10	47.65	6.42	1024	-22.0	3.74	---	---	---	---	---	77.6	---	---	---	---	---	---	---	225
	07/13/10	49.35	6.78	1351	-146.2	1.24	35	0.18 J	---	---	---	68.1	---	---	<1	<1	<1	---	---	294
	07/07/11	49.6	6.84	1390	-30.6	1.79	---	---	---	---	---	---	---	---	---	---	---	---	---	---
	06/19/14	47.91	7.49	1151	-86.6	0.04	---	<0.15	---	1.51	---	29.9	---	2400	<0.5	<0.5	420	---	---	359
PZ5	03/27/09	48.05	7.64	718	-11.6	1.72	10	< 0.1	500	< 60	129	186	220	9600	< 1	< 1	4.1	< 19	---	141
	06/26/09	47.33	7.33	535	-169.6	1.8	20	< 0.1	360	0.6	0.1	45.6	210	4200	<1	<1	<1	23 "J"	---	65.4

Key:

D.O. = dissolved oxygen
O.R.P. = oxygen-reduction potential
T.O.C. = Total Organic Carbon
mg/l = milligrams per liter
µg/l = micrograms per liter
mV = millivolts
µS/cm = microsiemens per centimeter
su = standard units
NR = Not reported
J = Estimated concentration below laboratory quantitation level.

Table 1 Water Level Data, Former EconoCare Cleaners, Green Bay, Wisconsin

Well I.D.	Ground Surface Elevation (msl)	Reference Point Elevation (msl)	Top/Bottom Well Screen Elevation (msl/fbg)	Date	Depth to Water (feet)		Water Table Elevation (feet)
					Below Riser	Below Grade	
MW1	654.87	654.47	651.77 / 641.77	03/25/09	0.74	1.14	653.73
				06/26/09	3.95	4.35	650.52
				09/29/09	6.66	7.06	647.81
				12/08/09	4.69	5.09	649.78
				03/30/09	4.70	5.10	649.77
				07/13/10	2.49	2.89	651.98
				06/19/14	4.50	4.87	648.96
MW1R	653.83	653.46	651.09 / 641.09	03/25/09	2.37	2.88	651.65
				06/26/09	4.58	5.09	649.44
				09/29/09	6.61	7.12	647.41
				12/08/09	4.95	5.46	649.07
				03/30/09	4.35	4.86	649.67
				07/13/10	3.44	3.95	650.58
				06/19/14	5.82	6.56	648.20
MW2	654.53	654.02	651.52 / 641.52	03/25/09	2.37	2.88	651.65
				06/26/09	4.58	5.09	649.44
				09/29/09	6.61	7.12	647.41
				12/08/09	4.95	5.46	649.07
				03/30/09	4.35	4.86	649.67
				07/13/10	3.44	3.95	650.58
				06/19/14	5.82	6.56	648.20
MW2	654.76	654.02	651.52 / 641.52	03/25/09	2.37	2.88	651.65
				06/26/09	4.58	5.09	649.44
				09/29/09	6.61	7.12	647.41
				12/08/09	4.95	5.46	649.07
				03/30/09	4.35	4.86	649.67
				07/13/10	3.44	3.95	650.58
				06/19/14	5.82	6.56	648.20
MW3	654.28	653.85	651.35 / 641.35	03/25/09	0.42	0.85	653.43
				06/26/09	4.10	4.53	649.75
				09/29/09	6.52	6.95	647.33
				12/08/09	4.93	5.36	648.92
				03/30/09	3.66	4.09	650.19
				07/13/10	2.60	3.03	651.25
				06/19/14	5.34	5.72	648.46
MW4	656.07	655.56	652.86 / 642.86	03/25/09	3.20	3.71	652.36
				06/26/09	4.90	5.41	650.66
				09/29/09	7.83	8.34	647.73
				12/08/09	5.75	6.26	649.81
				03/30/09	4.70	5.21	650.86
				07/13/10	3.64	4.15	651.92
				06/19/14	5.34	5.72	648.46
MW4R	654.18	653.80	651.41 / 641.41	03/25/09	3.20	3.71	652.36
				06/26/09	4.90	5.41	650.66
				09/29/09	7.83	8.34	647.73
				12/08/09	5.75	6.26	649.81
				03/30/09	4.70	5.21	650.86
				07/13/10	3.64	4.15	651.92
				06/19/14	5.34	5.72	648.46
MW5	655.85	655.46	652.96 / 642.96	03/25/09	3.70	4.09	651.76
				06/26/09	5.15	5.54	650.31
				09/29/09	7.30	7.69	648.16
				12/08/09	5.69	6.08	649.77
				03/30/09	4.87	5.26	650.59
				07/13/10	3.60	3.99	651.86
				06/19/14	5.40	5.79	650.06
MW6	652.02	651.54	648.04 / 638.04	03/25/09	0.90	1.38	650.64
				06/26/09	3.15	3.63	648.39
				09/29/09	4.52	5.00	647.02
				12/08/09	3.98	4.46	647.56
				03/30/09	2.85	3.33	648.69
				07/13/10	1.90	2.38	649.64
				06/19/14	1.90	2.38	649.64
MW7	653.83	653.27	649.77 / 639.77	03/25/09	3.29	3.85	649.98
				06/26/09	5.02	5.58	648.25
				09/29/09	6.56	7.12	646.71
				12/08/09	5.02	5.58	648.25
				03/30/09	4.68	5.24	648.59
				07/13/10	3.38	3.94	649.89
				06/19/14	4.42	4.98	648.85
MW8	655.45	654.89	651.39 / 641.39	03/25/09	4.58	5.14	650.31
				06/26/09	5.91	6.47	648.98
				09/29/09	7.36	7.92	647.53
				12/08/09	6.15	6.71	648.74
				03/30/09	5.78	6.34	649.11
				07/13/10	4.70	5.26	650.19
				06/19/14	5.48	6.04	649.41
MW9	650.67	650.29	646.79 / 636.79	03/25/09	0.92	1.30	649.37
				06/26/09	3.14	3.52	647.15
				09/29/09	3.75	4.13	646.54
				12/08/09	3.31	3.69	646.98
				03/30/09	2.60	2.98	647.69
				07/13/10	1.46	1.84	648.83
				06/19/14	2.36	2.74	647.93

Table 1 Water Level Data, Former EconoCare Cleaners, Green Bay, Wisconsin

Well I.D.	Ground Surface Elevation (msl)	Reference Point Elevation (msl)	Top/Bottom Well Screen Elevation (msl/fbg)	Date	Depth to Water (feet)		Water Table Elevation (feet)
					Below Riser	Below Grade	
				06/19/14	1.46	1.84	648.83

Table 1 Water Level Data, Former EconoCare Cleaners, Green Bay, Wisconsin

Well I.D.	Ground Surface Elevation (msl)	Reference Point Elevation (msl)	Top/Bottom Well Screen Elevation (msl/fbg)	Date	Depth to Water (feet)		Water Table Elevation (feet)
					Below Riser	Below Grade	
MW10	651.88	651.51	648.01 / 638.01	03/25/09	4.22	4.59	647.29
				06/26/09	5.85	6.22	645.66
				09/29/09	8.35	8.72	643.16
				12/08/09	6.23	6.60	645.28
				03/30/09	5.50	5.87	646.01
				07/13/10	4.57	4.94	646.94
				07/07/11	5.68	6.05	645.83
				06/19/14	5.13	5.50	646.38
MW11	648.01	647.63	644.13 / 634.13	03/25/09	0.30	0.68	647.33
				06/26/09	3.21	3.59	644.42
				09/29/09	8.07	8.45	639.56
				12/08/09	5.37	5.75	642.26
				03/30/09	1.54	1.92	646.09
				07/13/10	0.56	0.94	647.07
				07/07/11	1.75	2.13	645.88
				06/19/14	0.55	0.93	647.08
PZ1	654.85	654.55	635.35 / 630.35	03/25/09	1.35	1.65	653.20
				06/26/09	4.13	4.43	650.42
				09/29/09	6.64	6.94	647.91
				12/08/09	4.93	5.23	649.62
				03/30/09	3.77	4.07	650.78
				07/13/10	2.71	3.01	651.84
PZ1R	653.83	653.13	634.23 / 629.23	06/19/14	4.03	4.73	649.10
PZ2	653.73	653.23	633.23 / 628.23	03/25/09	3.83	4.33	649.40
				06/26/09	5.29	5.79	647.94
				09/29/09	6.70	7.20	646.53
				12/08/09	5.33	5.83	647.90
				03/30/09	4.97	5.47	648.26
				07/13/10	4.16	4.66	649.07
				07/07/11	4.79	5.29	648.44
				06/19/14	4.80	5.30	648.43
PZ3	650.65	650.11	630.11 / 625.11	03/25/09	7.42	7.96	642.69
				06/26/09	7.57	8.11	642.54
				09/29/09	8.80	9.34	641.31
				12/08/09	7.06	7.60	643.05
				03/30/09	6.89	7.43	643.22
				07/13/10	5.86	6.40	644.25
				07/07/11	4.96	5.50	645.15
				06/19/14	0.50	1.04	649.61
PZ4	652.46	652.01	632.01 / 627.01	03/25/09	5.92	6.37	646.09
				06/26/09	6.82	7.27	645.19
				09/29/09	9.62	10.07	642.39
				12/08/09	8.51	8.96	643.50
				03/30/09	7.56	8.01	644.45
				07/13/10	5.41	5.86	646.60
				07/07/11	5.95	6.40	646.06
				06/19/14	6.41	6.86	645.60
PZ5	647.99	647.67	627.67 / 622.67	03/25/09	0.50	0.82	647.17
				06/26/09	3.43	3.75	644.24
				09/29/09	8.10	8.42	639.57
				12/08/09	5.46	5.78	642.21
				03/30/09	1.88	2.20	645.79
				07/13/10	1.80	2.12	645.87
				07/07/11	1.83	2.15	645.84
				06/19/14	0.75	1.07	646.92

Notes

- * = Well Screen Submerged
- msl = Mean Sea Level
- fbg = Feet Below Grade
- = Not Collected

- Note: 1) Benchmark is XXX
- 2) Reference Point is XXX