



Roy F. Weston, Inc.
Suite 400
3 Hawthorn Parkway
Vernon Hills, Illinois 60061-1450
708-918-4000 • Fax 708-918-4055

*File - Moss Amer SF
FID # 4137828*

office copy

14 July 1994



Mr. Russell D. Hart
Remedial Project Manager
U.S. Environmental Protection Agency
Region V
77 West Jackson Boulevard
Chicago, Illinois 60604

Work Order No. 02687-007-002

Re: Proposed Phase II Background Sediment Sampling Locations
Moss-American Site, Milwaukee, Wisconsin

Dear Mr. Hart:

Roy F. Weston, Inc. (WESTON®), on behalf of Kerr-McGee Chemical Corporation (KMCC) is hereby transmitting proposed sediment sampling locations for Phase II of Predesign Task 2b (Determine Background Concentration of CPAHs in Soils and Sediments). Phase II background soil sampling is not required, as identified in the March 1993 Technical Memorandum for Predesign Task 2. Phase II background sediment sampling will address CPAH levels in non-site-related tributaries adjacent to Reaches 2, 3, 4, and 5 of the Little Menomonee River (Figure 1). Reach 1 (i.e., the reach adjacent to the former wood preserving plant property) will not be sampled because of the scarcity of non-site-related tributaries.

All non-site-related tributaries and drainage features are identified in Figures 2, 3, and 4. Predesign Task 10 (Study River and Floodplain Hydraulics) identified the 2-year floodplain of the Little Menomonee River, and all reaches of tributaries within the 2-year floodplain are excluded as potential sediment background locations. This exclusion is proposed to eliminate areas of potential historic deposition of site-related sediments. Tributaries that lie entirely within the 2-year floodplain are therefore excluded as potential sediment sampling locations. Additional reasons for exclusion of a tributary in the preliminary screening include:

- No manhole/catch basin access.
- Lack of sediment.
- No direct overland discharge to the Little Menomonee River.

The proposed tributaries for sediment background sampling are listed below.

Reach 2 (Figures 2 and 3)

Tributaries 1 and 2.





Mr. Russell D. Hart
U.S. EPA

-2-

14 July 1994

Reach 3 (Figure 3)

Tributaries 5 and 8.

Reach 4 (Figures 3 and 4)

Tributary 3

Reach 5 (Figure 4)

Tributaries 1, 4, 5, and 6.

Five samples will be collected at randomly selected locations within each tributary. This will apply to all non-site-related tributaries except underground storm sewers, where appropriately located manholes/catch basins will limit the number and location of collected samples. Sediment samples will be collected with a hand corer down to hard pan, or alternatively, with a hand auger to a depth of 12 inches. All sampling will be conducted in accordance with the October 1992 Quality Assurance Project Plan for Predesign Task 2 and is currently scheduled to begin on 22 August 1994.

In an effort to expedite this review and obtain U.S. EPA's concurrence with these sampling locations in advance of the start date, we suggest that U.S. EPA's oversight representatives and WESTON's Task Manager conduct a field review of the planned sampling locations. Please contact us at (708) 918-4000 to schedule this field review.

Very truly yours,

ROY F. WESTON, INC.

Gary J. Deigan
Principal Project Manager

Kurt S. Stimpson
Project Director

GJD:KSS/slr

cc: A. Keith Watson, KMCC
Gary Edelstein, WDNR
Rich Schultz, WESTON

BK-06/23/94-14-26-CAD93\SYMBOL\B

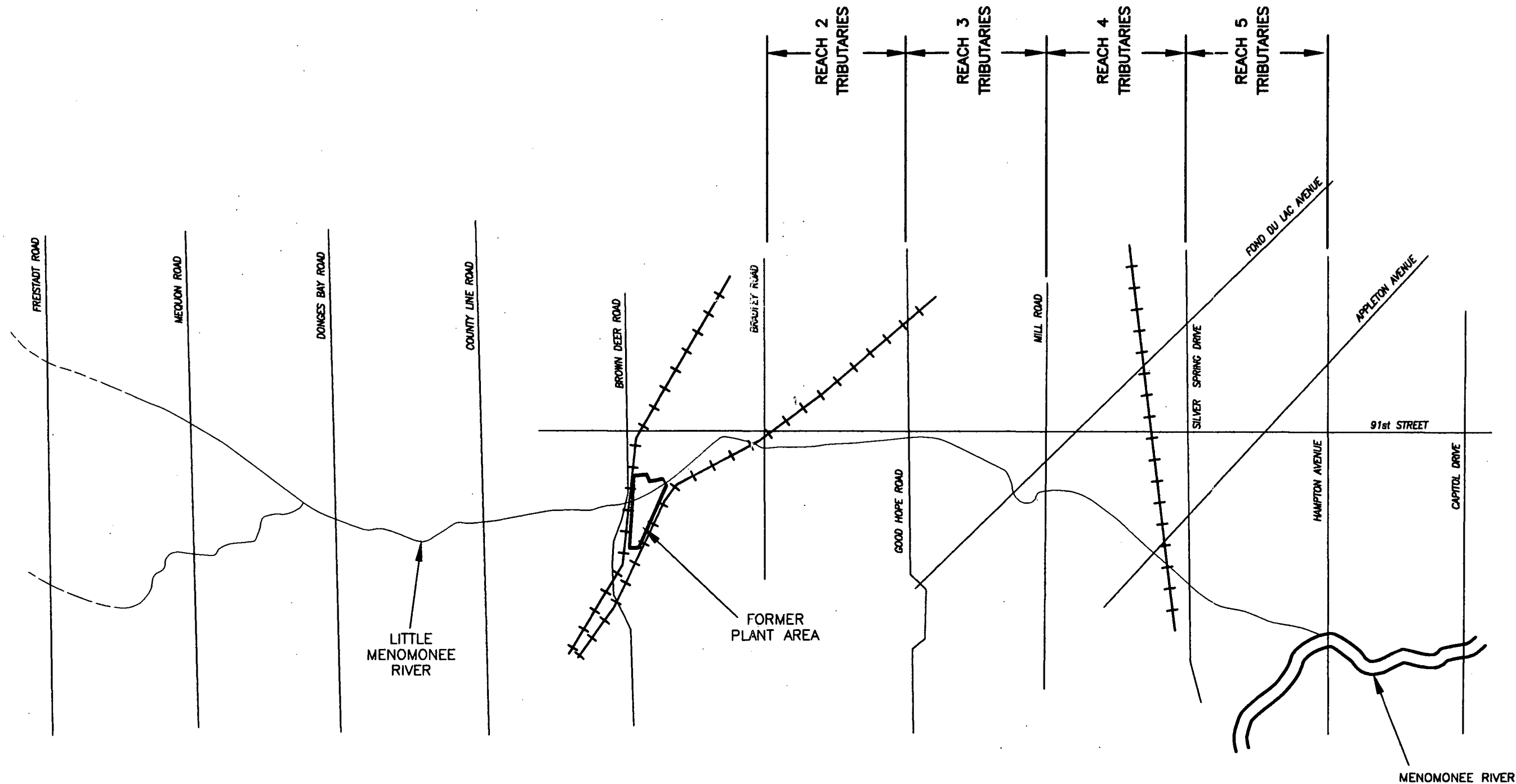
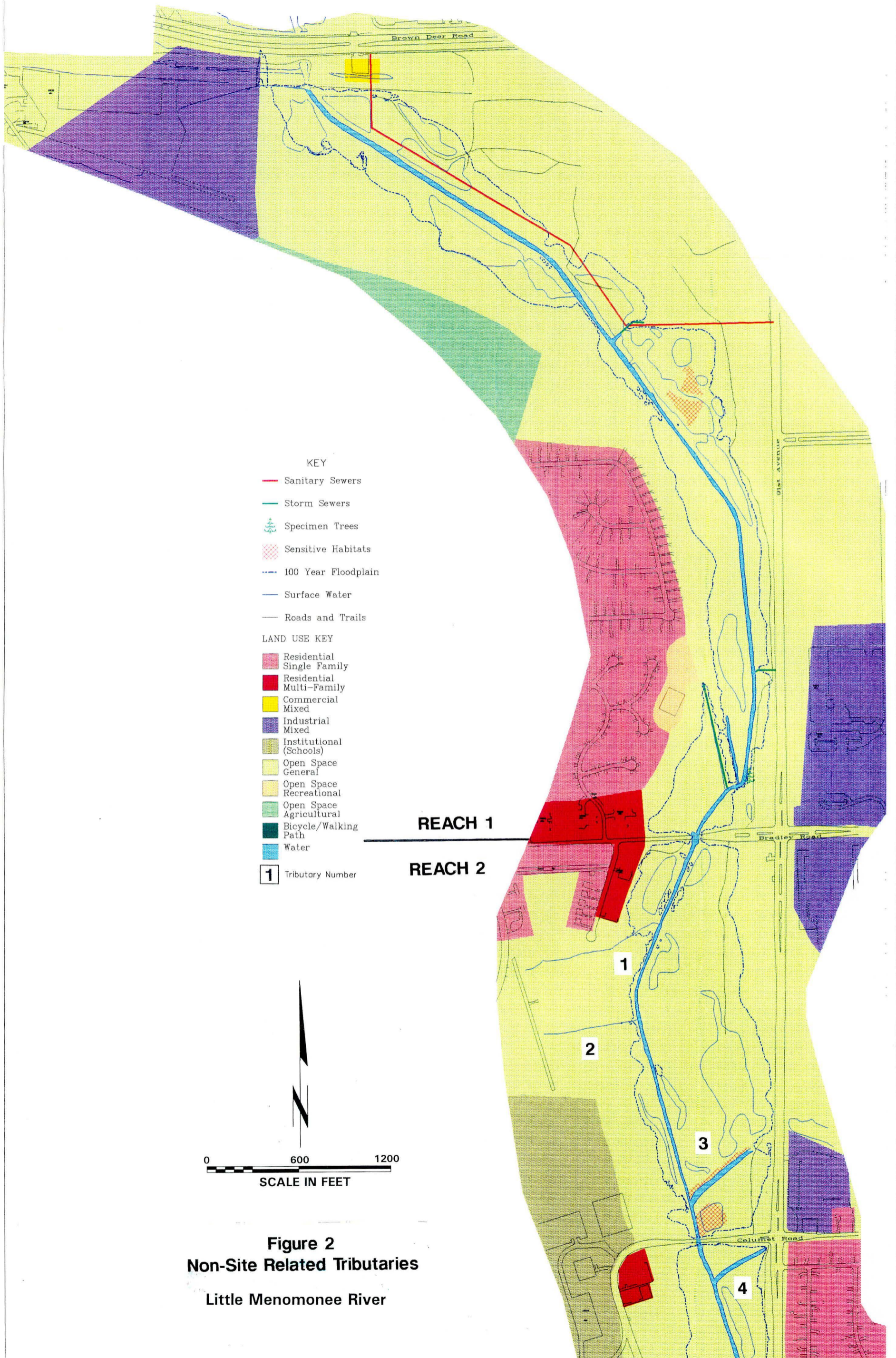


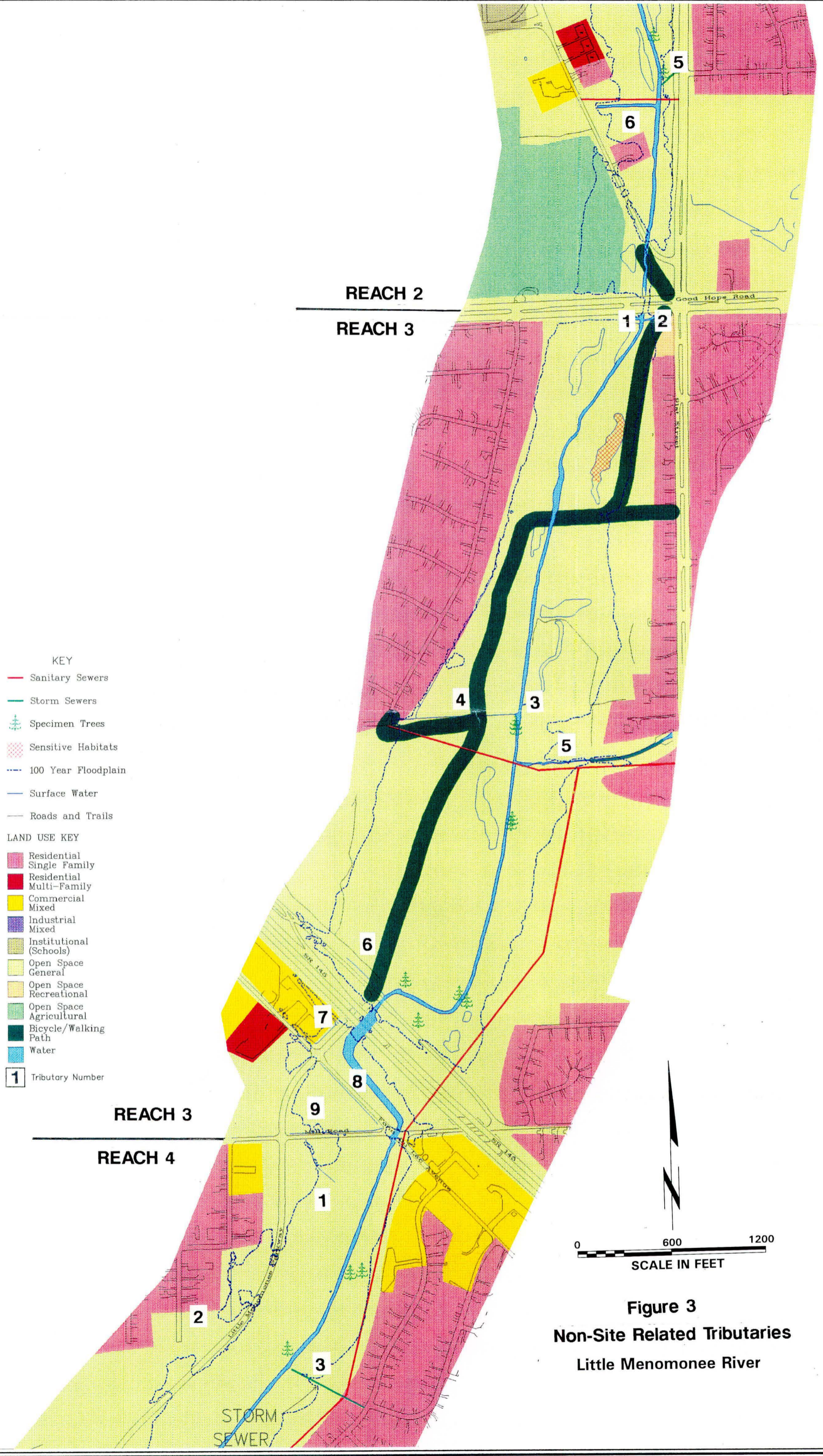
FIGURE 1

WESTON
MANAGERS DESIGNERS/CONSULTANTS

Three Hawthorn Parkway
Vernon Hills, Illinois
60061

**PROPOSED SAMPLING AREAS
FOR SEDIMENT - PHASE II**
MOSS-AMERICAN SITE
Milwaukee, Wisconsin





- KEY**
- Sanitary Sewers
 - Storm Sewers
 - 🌳 Specimen Trees
 - ▨ Sensitive Habitats
 - 100 Year Floodplain
 - Surface Water
 - Roads and Trails
- LAND USE KEY**
- ▨ Residential Single Family
 - ▨ Residential Multi-Family
 - ▨ Commercial Mixed
 - ▨ Industrial Mixed
 - ▨ Institutional (Schools)
 - ▨ Open Space General
 - ▨ Open Space Recreational
 - ▨ Open Space Agricultural
 - ▨ Bicycle/Walking Path
 - ▨ Water
- 1** Tributary Number

REACH 3

REACH 4

REACH 2

REACH 3

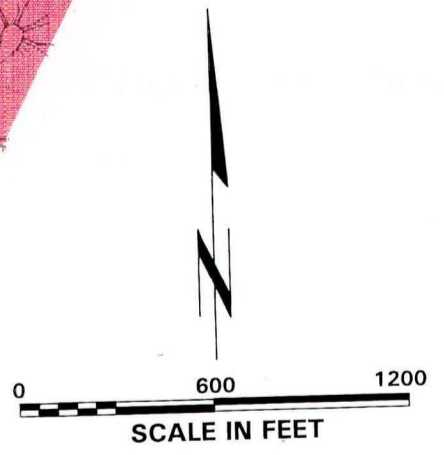
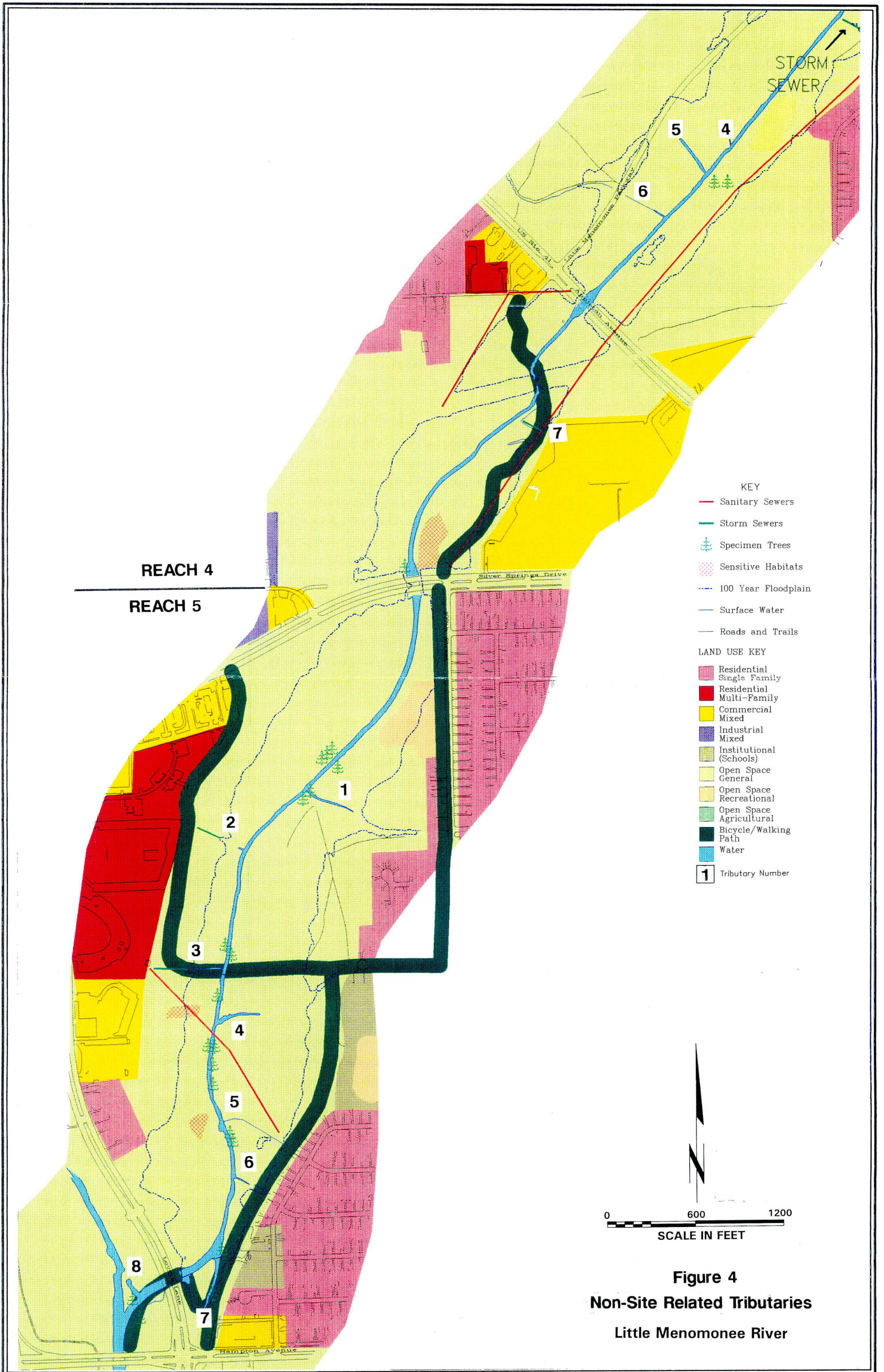


Figure 3
Non-Site Related Tributaries
Little Menomonee River



- KEY**
- Sanitary Sewers
 - Storm Sewers
 - 🌲 Specimen Trees
 - ▨ Sensitive Habitats
 - - - 100 Year Floodplain
 - Surface Water
 - Roads and Trails
- LAND USE KEY**
- ▨ Residential Single Family
 - ▨ Residential Multi-Family
 - ▨ Commercial Mixed
 - ▨ Industrial Mixed
 - ▨ Institutional (Schools)
 - ▨ Open Space General
 - ▨ Open Space Recreational
 - ▨ Open Space Agricultural
 - ▨ Bicycle/Walking Path
 - ▨ Water
- 1** Tributary Number

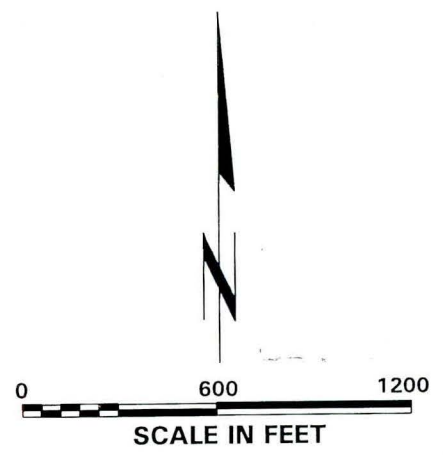


Figure 4
Non-Site Related Tributaries
Little Menomonee River