

GROUNDWATER REMEDIAL SYSTEM

MOSS-AMERICAN SITE
Milwaukee, Wisconsin

MARCH 1998

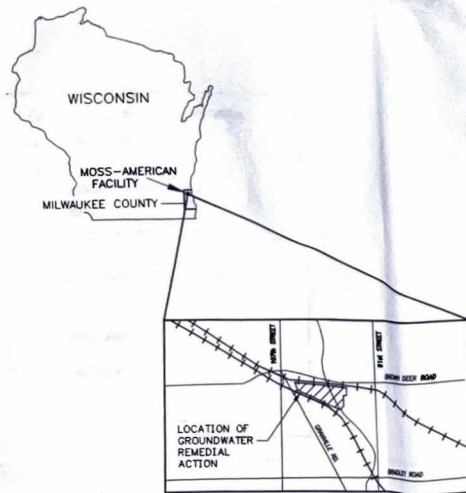
LIST OF DRAWINGS

FUNNEL AND GATE TREATMENT SYSTEM

- TITLE SHEET
1. EXISTING SITE CONDITIONS
2. EXCAVATION PLAN
3. SITE PLAN
4. PROCESS FLOW SCHEMATICS
5. TREATMENT BUILDING DETAILS
6. DETAILS
7. ELECTRICAL DIAGRAMS
8. ELECTRICAL PLAN AND SCHEDULE

CONTINGENT GROUNDWATER TREATMENT SYSTEM

- CS-1 CONTINGENT SYSTEM SITE PLAN
CS-2 CONTINGENT SYSTEM SCHEMATICS AND DETAILS
CS-3 CONTINGENT SYSTEM ELECTRICAL PLAN AND SCHEDULE



FINAL (100%) DESIGN SUBMITTAL



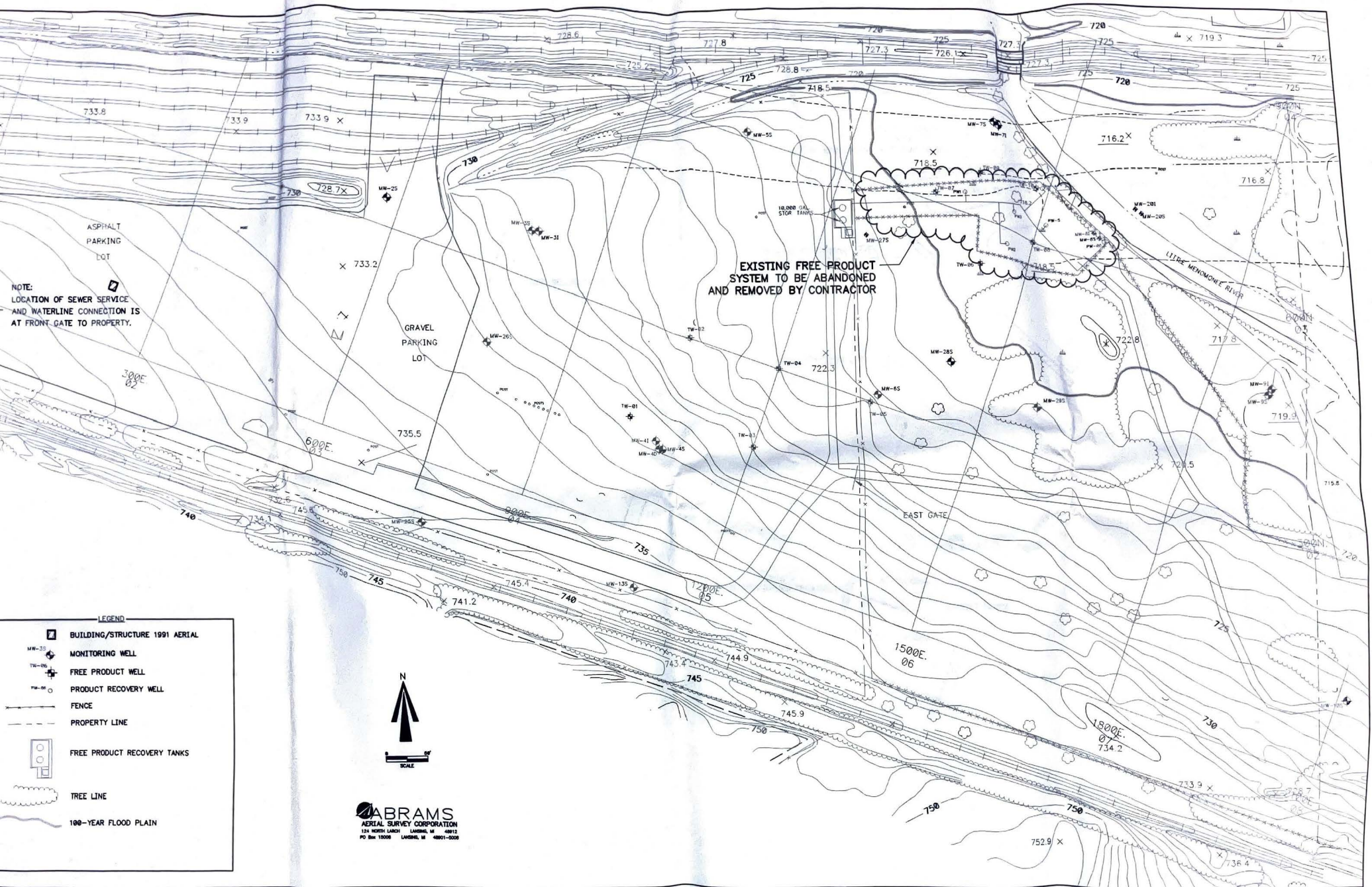
NOTE:
LOCATION OF SEWER SERVICE
AND WATERLINE CONNECTION IS
AT FRONT GATE TO PROPERTY.

EXISTING FREE PRODUCT
SYSTEM TO BE ABANDONED
AND REMOVED BY CONTRACTOR

LEGEND

- BUILDING/STRUCTURE 1991 AERIAL
- MONITORING WELL
- FREE PRODUCT WELL
- PRODUCT RECOVERY WELL
- FENCE
- PROPERTY LINE
- FREE PRODUCT RECOVERY TANKS
- TREE LINE
- 100-YEAR FLOOD PLAIN

ABRAMS
AERIAL SURVEY CORPORATION
124 NORTH LARCH LAMONA, WI 48012
PO Box 15006 LAMONA, WI 48001-0006



NO.	DATE	APPR.	REVISION

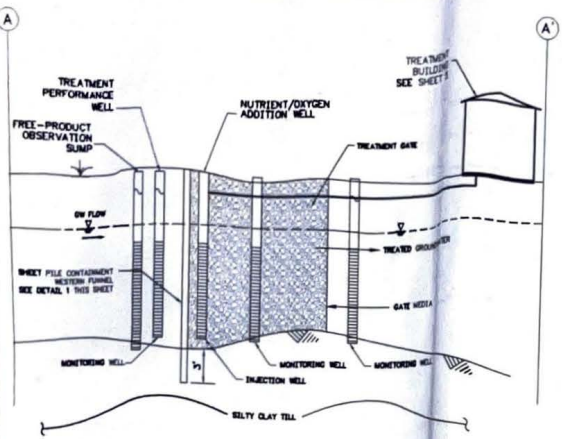
MOSS - AMERICAN SITE
Milwaukee, Wisconsin



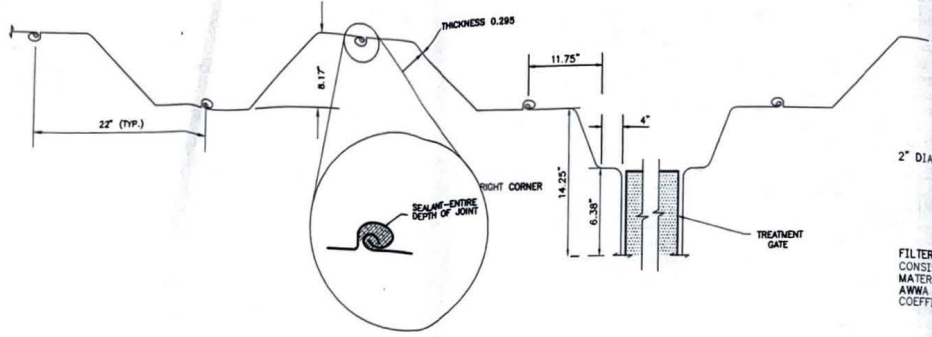
CHECKED	DATE	CLIENT APPROVALS	DATE

EXISTING SITE CONDITIONS
FUNNEL AND GATE TREATMENT SYSTEM

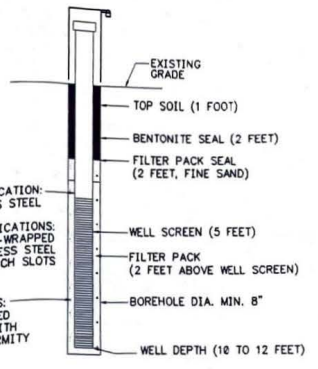
OWNER	DATE	FIGURE	REV. NO.
R.J.B.	FEB 98	1	
SCALE	1" = 60'	PROJECT NO.	02687007002002200
		SHEET	1 OF 11



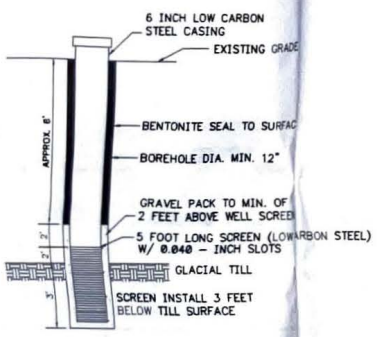
SCHEMATIC CROSS SECTION (A) 6
N.T.S.



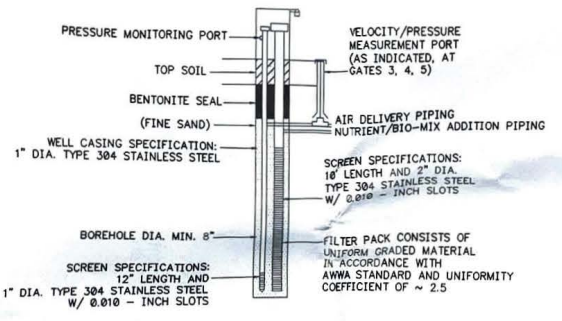
INTERNAL CAVITY SEALABLE JOINT SHEET PILE 1 6
N.T.S.



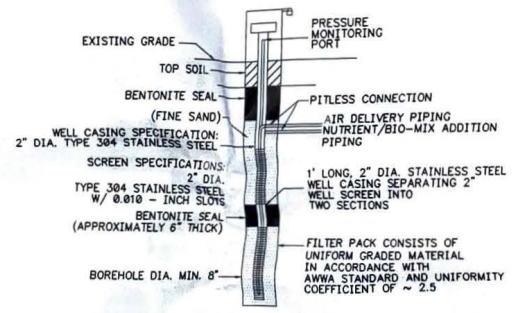
TREATMENT PERFORMANCE MONITORING WELL (TYPICAL) 2 6
N.T.S.



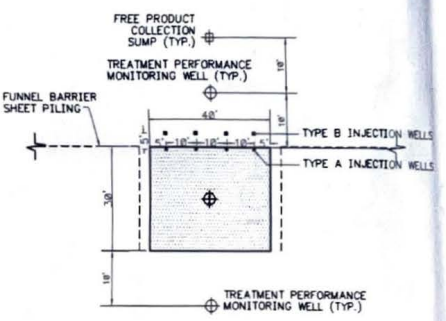
FREE PRODUCT COLLECTION SUMP 3 6
N.T.S.



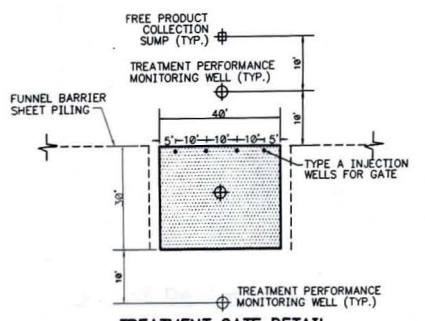
INJECTION WELL (TYPE A) 4 6
N.T.S.



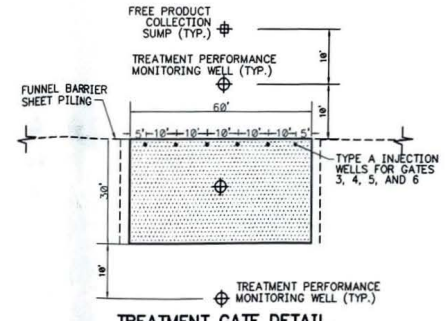
INJECTION WELL (TYPE B) 5 6
N.T.S.



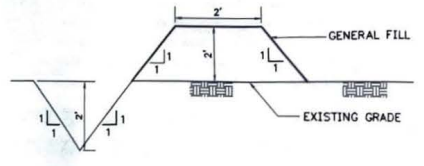
TREATMENT GATE 1 DETAIL 7 6
N.T.S.



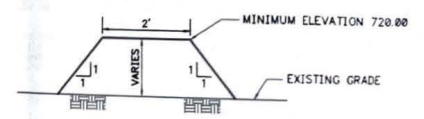
TREATMENT GATE DETAIL FOR GATE 2 8 6
N.T.S.



TREATMENT GATE DETAIL FOR GATES 3 THRU 6 9 6
N.T.S.

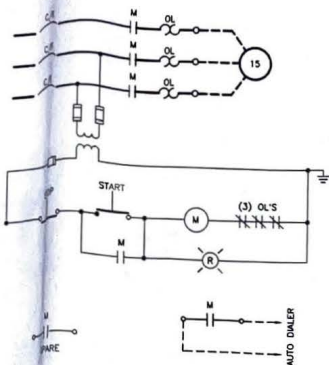


RUN-ON DIVERSION BERM/CHANNEL 10 6
N.T.S.

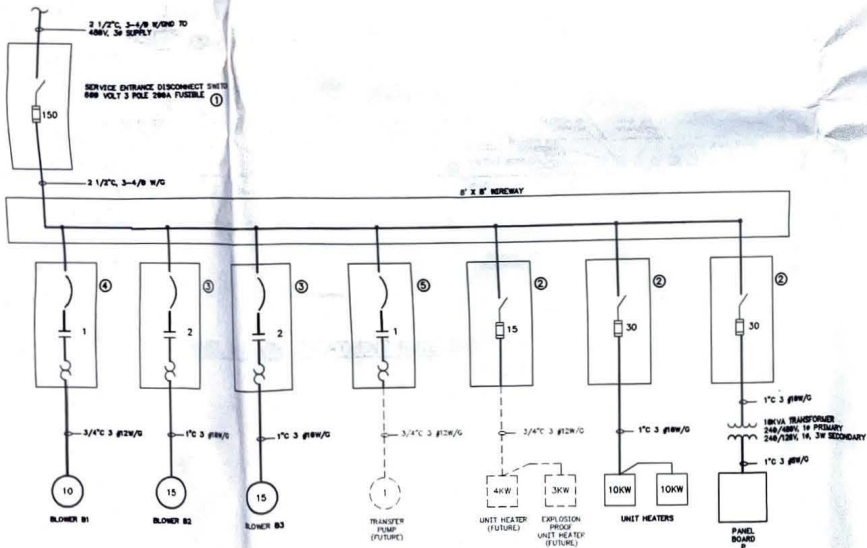


FLOOD CONTROL BERM 11 6
N.T.S.

FINAL DESIGN SUBMITTAL		MOSS - AMERICAN SITE Milwaukee, Wisconsin		DESIGNED	DATE	CHECK APPROVAL	DATE	DETAILS FUNNEL AND GATE TREATMENT SYSTEM	
		WESTON ENGINEERS AND ARCHITECTS		DRG. ENG.				DRAWN R.J.B.	
				PROJ. ENG.				DATE FEB 98	SHEET NO. 6
				PROJ. MGR.				SCALE AS NOTED	
				APPROVED				SHEET NO. 6 OF 11	
				APPROVED				DATE 02/28/98	



BLOWER SCHEMATIC



SINGLE LINE DIAGRAM

SINGLE PHASE PANELBOARD CIRCUIT SCHEDULE P											
CHARACTERISTICS:		240/120V, 1Ø, 3W		50 AMP MAIN BREAKER							
LOCATION:											
CKT NO	DESCRIPTION	BKR AMP	LOAD VA L1	L2	LEG L1	L2	LOAD VA L1	L2	BKR AMP	DESCRIPTION	CKT NO
1	INTERIOR LTG.	15			L1				15	FUTURE EXTRACTION WELL PUMP	2
3	EXTERIOR LTG.	15			L1				15	FUTURE EXTRACTION WELL PUMP	6
5	GENERAL PURPOSE RECEPT.	15			L1				15	FUTURE EXTRACTION WELL PUMP	10
7	GENERAL PURPOSE RECEPT.	15			L1				15	FUTURE EXTRACTION WELL PUMP	14
9	EXHAUST FAN	15			L1				15	CHEMICAL PUMP RECEPT.	16
11	EXHAUST FAN	15			L1				15	CHEMICAL PUMP RECEPT.	18
13	TELEPHONE DIALER	15			L1				15	FUTURE CHEMICAL PUMP RECEPT.	20
15	SPARE	15			L1				15	FUTURE CHEMICAL PUMP RECEPT.	22
17	SPARE	15			L1				15	FUTURE CHEMICAL PUMP RECEPT.	24
19	SPARE	15			L1				15	FUTURE CHEMICAL PUMP RECEPT.	26
21	SPARE	15			L1				15	MIXER RECEPT.	28
23	SPARE	15			L1				15	MIXER RECEPT.	30
25	SPARE	15			L1				15	MIXER RECEPT.	32
27	SPARE	15			L1				15	MIXER RECEPT.	34
29	SPARE	15			L1				15	MIXER RECEPT.	36
31	SPARE	15			L1				15	MIXER RECEPT.	38
33	SPARE	15			L1				15	MIXER RECEPT.	40
35	FLOW METER	15			L1				15	CONTROL PANEL (FUTURE)	42
37					L1						
39					L1						
41					L1						

GENERAL NOTES

- ELECTRICAL INSTALLATION SHALL BE IN ACCORDANCE WITH SPECIFICATIONS AS PREPARED BY R.F. WESTON, INC AND WITH THE LATEST REVISIONS OF NATIONAL ELECTRICAL CODE, AND WITH ALL THE LOCAL CODES WHICH HAVE PRECEDENCE.
- RACEWAY RUNS ARE SHOWN GRAMMATICALLY ON THE DRAWINGS. EXACT LOCATIONS AND ROUTING IS TO BE DETERMINED IN THE FIELD. ELECTRICAL CONTRACTOR SHALL COORDINATE ALL ELECTRICAL WORK WITH ALL OTHER TRADES.
- MINIMUM CONDUIT SIZE SHALL BE 3/4" ABOVE GRADE & 1" BELOW GRADE UNLESS OTHERWISE NOTED.
- ALL MOUNTING HARDWARE (PIPE STRAPS, V-BOLTS, ETC.) MUST BE HOT DIPPEED GALVANIZED.
- ALL ELECTRICAL WIRES AND CABLES FOR POWER, CONTROL AND INSTRUMENTATION SHALL BE TAGGED AT BOTH ENDS.
- INSTRUMENT SIGNAL, CONTROL, AND POWER WIRES SHALL NOT BE SPliced.
- ALL CONDUITS AND FITTINGS ARE TO BE RUN EXPOSED, WHERE POSSIBLE, AND TO BE SECURELY SUPPORTED AND EFFECTIVELY GROUNDED.
- CONDUIT SHALL BE RUN ABOVE PROCESS LINES, WHERE POSSIBLE.
- FINAL CONNECTIONS TO EQUIPMENT SHALL BE MADE BY FLEXIBLE METALLIC CONDUIT.
- DISCRETE INSTRUMENT SIGNALS AND ANALOG (4-20 MA) SIGNALS SHALL BE RUN IN SEPARATE RACEWAY SYSTEMS.
- MULTIPLE "HOME RUN" CIRCUITS MAY BE COMBINED BY THE CONTRACTOR INTO A SINGLE CONDUIT/CABLE USING THE FOLLOWING OUTLINES:
 - NO MORE THAN (6) SINGLE PHASE OR (3) THREE PHASE CIRCUITS MAY BE COMBINED.
 - WIRE SIZES MUST BE INCREASED PER N.E.C. ARTICLE 310 NOTE #8 (AS REQUIRED).
 - CONDUIT SIZES MUST BE ADJUSTED TO MAINTAIN A MAXIMUM OF AIR FILL.
 - ONLY CIRCUITS ORIGINATING AT A COMMON PANEL, MCC, ETC. MAY BE COMBINED.
 - LOW LEVEL SIGNAL CIRCUITS SHALL NOT BE COMBINED WITH ALTERNATING CURRENT CIRCUITS.
- THE CONTRACTOR SHALL PROVIDE ALL NECESSARY RACEWAY SUPPORTS. SUPPORTS SHALL BE FABRICATED FROM GALVANIZED STEEL STRUCTURAL SHAPES OR "UNISTRUT" OR EQUAL.
- NEUTRAL AND GROUND CONDUCTORS SHALL BE OF THE SAME AWG AS CURRENT CARRYING CONDUCTORS EXCEPT AS NOTED OTHERWISE.
- GROUNDING AND BONDING OF ELECTRICAL EQUIPMENT AND PIPING SHALL BE IN ACCORDANCE WITH NEC SECTION 250 AND 501, NFPA 54-1988, AND ANSI Z223.1-1988.
- ABBREVIATIONS NOT SHOWN ARE DERIVED FROM ASME Y11.1989 ABBREVIATIONS FOR USE ON DRAWINGS AND IN TEXT.
- ALL CONTROL STATIONS DISCONNECT SWITCHES, JUNCTION BOXES AND OTHER ELECTRICAL DEVICES MOUNTED OUTDOORS OR IN PROCESS AREAS SHALL BE NEMA 4 UNLESS OTHERWISE NOTED.
- ELECTRICAL EQUIPMENT MOUNTING HEIGHT:
 - PANELBOARDS - 6'-8" TO TOP
 - DISCONNECTS - 2'-8" TO TOP
 - CONTROL STATION - 6'-8" TO TOP
- SEAL ALL CONDUIT PENETRATIONS AND PROVIDE CONDUIT SEAL FITTINGS FOR CLASSIFIED AREA WALLS. ALL WORK SHALL BE DONE IN ACCORDANCE WITH NEC ARTICLE 508.

DESIGN	REVISION	NO.	DATE	APPROVED

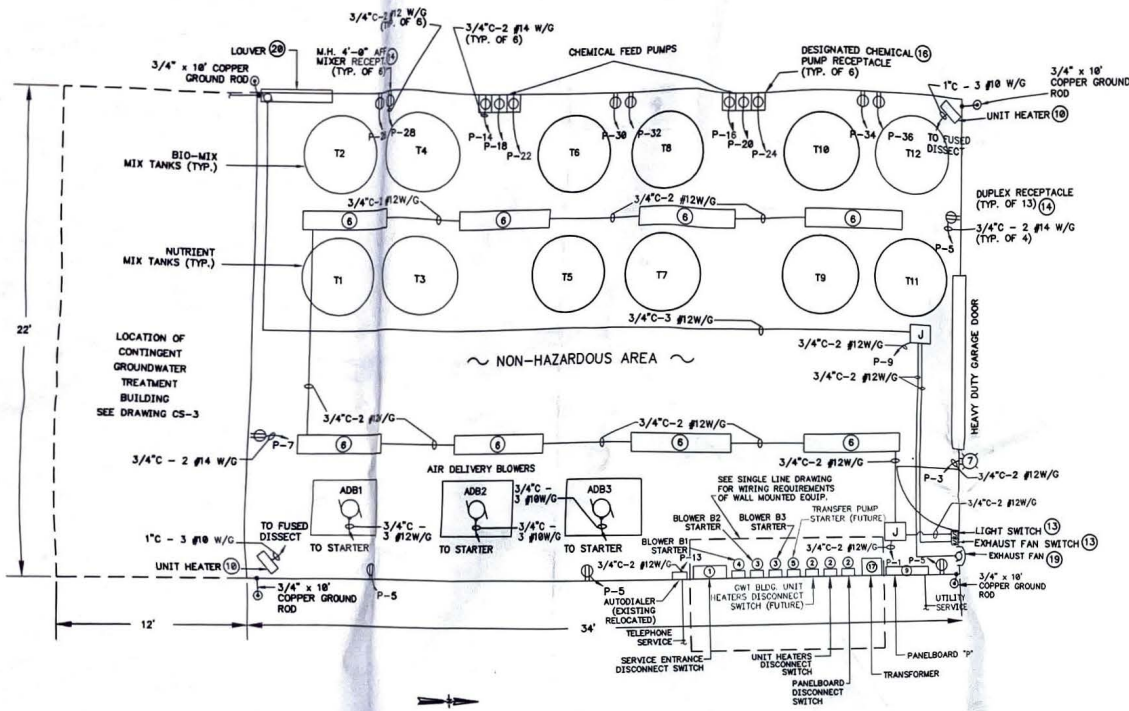
MOSS - AMERICAN SITE
Milwaukee, Wisconsin



CHECKED	DATE	CLIENT APPROVAL	DATE

ELECTRICAL DIAGRAMS FUNNEL AND GATE TREATMENT SYSTEM			
DESIGNER	DATE	SCALE	REV. NO.
R.J.B.	MARCH 98	AS NOTED	7
SCALE	REV. NO.	DATE	

FUNNEL AND GATE TREATMENT BUILDING
BILL OF MATERIALS



FUNNEL & GATE TREATMENT BUILDING 1/5
N.T.S.

ITEM	QTY	DESCRIPTION
1	1	DISCONNECT SWITCH, 600V, 3 PHASE, 3 WIRE, 200A, HEAVY DUTY, FUSIBLE, NEMA 1 LOCKABLE ENCLOSURE, EQUIPMENT GROUND BAR. SQUARE-D CAT. NO. H364 OR EQUAL. PROVIDE 150A CLASS J FUSES.
2	2	DISCONNECT SWITCH, 600V, 3 PHASE, 3 WIRE, 30A, HEAVY DUTY, FUSIBLE, NEMA 1 LOCKABLE ENCLOSURE, EQUIPMENT GROUND BAR. SQUARE-D CAT. NO. H361 OR EQUAL. PROVIDE CLASS J FUSES SIZED PER SINGLE LINE DIAGRAM.
3	2	18HP BLOWER COMBINATION STARTER, INSTANTANEOUS TRIP MAGNETIC ONLY CIRCUIT BREAKER, 460V, 3 PHASE, NEMA SIZE 2, IN NEMA 1 LOCKABLE ENCLOSURE WITH EQUIPMENT GROUND BAR, MOMENTARY START-STOP PUSHBUTTONS, RED RUN PILOT LIGHT, EXTERNAL OVERLOAD RESET, 2 N.O. AUXILIARY CONTACTS, 120V CONTROL TRANSFORMER WITH 2 PRIMARY FUSES, 1 SECONDARY FUSE AND CONTROL CIRCUIT. SQUARE-D CAT. NO. S064V96 OR EQUAL.
4	1	18HP BLOWER COMBINATION STARTER, INSTANTANEOUS TRIP MAGNETIC ONLY CIRCUIT BREAKER, 460V, 3 PHASE, NEMA SIZE 1, IN NEMA 1 LOCKABLE ENCLOSURE WITH EQUIPMENT GROUND BAR, MOMENTARY START-STOP PUSHBUTTONS, RED RUN PILOT LIGHT, EXTERNAL OVERLOAD RESET, 2 N.O. AUXILIARY CONTACTS, 120V CONTROL TRANSFORMER WITH 2 PRIMARY FUSES, 1 SECONDARY FUSE AND CONTROL CIRCUIT. SQUARE-D CAT. NO. S064V96 OR EQUAL.
5	0	TRANSFER PUMP COMBINATION STARTER, INSTANTANEOUS TRIP MAGNETIC ONLY CIRCUIT BREAKER, 460V, 3 PHASE, NEMA SIZE 1, IN NEMA 1 LOCKABLE ENCLOSURE WITH EQUIPMENT GROUND BAR, HAND-OFF-AUTO SWITCH, RED RUN PILOT LIGHT, EXTERNAL OVERLOAD RESET, 2 N.O. AUXILIARY CONTACTS, 120V CONTROL TRANSFORMER WITH 2 PRIMARY FUSES, 1 SECONDARY FUSE AND CONTROL CIRCUIT. SQUARE-D CAT. NO. S064V96 OR EQUAL.
6	8	INDOOR LIGHT FIXTURE, FLUORESCENT, INDUSTRIAL, PENDANT MOUNT, 2 X 40 WATTS IN 1' X 4' STEEL HOUSING WITH WIRE GUARD AND 10% UPLIGHT.
7	1	OUTDOOR LIGHT FIXTURE, ENCLOSED, GASKETED, WALL MOUNT, WITH 70 WATT HIGH PRESSURE SODIUM LAMP, GLOBE AND PHOTOCELL.
8	0	INDOOR LIGHT FIXTURE, INCANDESCENT, FACTORY SEALED, EXPLOSION PROOF, CLASS I, DIV. I, PENDANT MOUNT, WITH 150 WATT LAMP AND GUARD. CROUSE-HINDS CAT. NO. EV210 OR EQUAL.
9	1	PANELBOARD, 120/240VAC, 1 PHASE, 3 WIRE, 50A MAIN, 42 POLE, WITH LIGHTNING ARRESTOR, IN NEMA 1 ENCLOSURE. PROVIDE BREAKERS IN ACCORDANCE WITH PANEL SCHEDULE.
10	2	UNIT HEATER, 10KW, 480VAC, 3 PHASE WITH INTEGRAL THERMOSTAT AND WALL MOUNTING BRACKET. CHROMALOX CAT. NO. LH18-43 OR EQUAL.
11	0	UNIT HEATER, 4KW, 480VAC, 3 PHASE, WITH INTEGRAL THERMOSTAT AND WALL MOUNTING BRACKET. CHROMALOX CAT. NO. LH18-43 OR EQUAL.
12	0	UNIT HEATER, 3KW, 480VAC, 3 PHASE, EXPLOSION PROOF WITH INTEGRAL THERMOSTAT AND WALL MOUNTING BRACKET. MARKEL CAT. NO. HL12-486368-3.0-24-T OR EQUAL.
13	2	TOGGLE SWITCH, 120VAC, 20A, SINGLE POLE, SPECIFICATION GRADE, STANDARD TOGGLE, SURFACE MOUNTED WITH CAST BOX.
14	11	DUPLEX RECEPTACLE, 120VAC, 20A, 91 TYPE, SPECIFICATION GRADE, SURFACE MOUNTED WITH CAST BOX & WATERPROOF COVER.
15	0	TOGGLE SWITCH, GENERAL USE SNAP SWITCH, 1 POLE, 120VAC, FRONT OPERATED, EXPLOSION PROOF, SINGLE GANG, DEAD END ENCLOSURE WITH 3/4" HUB. CROUSE-HINDS CAT. NO. ESF2129 OR EQUAL.
16	6	SINGLE RECEPTACLE, 120VAC, 20A, GFI TYPE, SPECIFICATION GRADE, SURFACE MOUNTED WITH CAST BOX & WATERPROOF COVER.
17	1	TRANSFORMER, DRY TYPE, 10KVA, 240/480V, 1 PHASE PRIMARY, AND 240/120V, 3 WIRE, 1 PHASE SECONDARY.
18	0	DISCONNECT SWITCH, 600V, 3 PHASE, 3 WIRE, 30A, HEAVY DUTY, NON-FUSIBLE, NEMA 1 LOCKABLE ENCLOSURE. SQUARE-D CAT. NO. HJ361 OR EQUAL.
19	1	WALL EXHAUST FAN, DIRECT DRIVE, CENTRIFUGAL WALL FAN, PENN VENTILATOR FUMEX CAT. NO. WFK135 RATED 735CFM AT .125" SP. UNIT TO INCLUDE 115V, 1/8HP, 1300 RPM MOTOR.
20	1	WALL LOUVER, 36" X 36", OPERABLE LOUVER, PENN VENTILATOR MODEL AFT WITH 45 DEGREE STORM BLADE, 6063-T5 ALLOY EXTRUDED ALUMINUM COMPLETE WITH 115V ELECTRIC ACTUATOR FOR POWER OPEN-SPRING RETURN WITH AUXILIARY END SWITCH.
21	0	WALL EXHAUST FAN, DIRECT DRIVE, CENTRIFUGAL WALL FAN, PENN VENTILATOR FUMEX CAT. NO. WFK105 RATED 309CFM AT .125" SP. UNIT TO INCLUDE 115V, 1/12HP, 1300 RPM MOTOR.
22	0	WALL LOUVER, 24" X 24", OPERABLE LOUVER, PENN VENTILATOR MODEL AFT WITH 45 DEGREE STORM BLADE, 6063-T5 ALLOY EXTRUDED ALUMINUM COMPLETE WITH 115V ELECTRIC ACTUATOR FOR POWER OPEN-SPRING RETURN WITH AUXILIARY END SWITCH.

REVISION	NO.	DATE	APPL.	REASON
FINAL DESIGN SUBMITTAL				

MOSS - AMERICAN SITE
Milwaukee, Wisconsin



CHECKED	DATE	CLIENT APPROVAL	DATE
DES. ENG.			
PROJ. ENG.			
PROJ. MGR.			
APPROVED			
APPROVED			

ELECTRICAL PLAN AND SCHEDULE

DRAWN	R.J.B.	DATE	FEB 98	SHEET NO.	8	TOTAL SHEETS	11
SCALE	AS NOTED	DATE	02/28/98	REV. NO.	0	OF	11

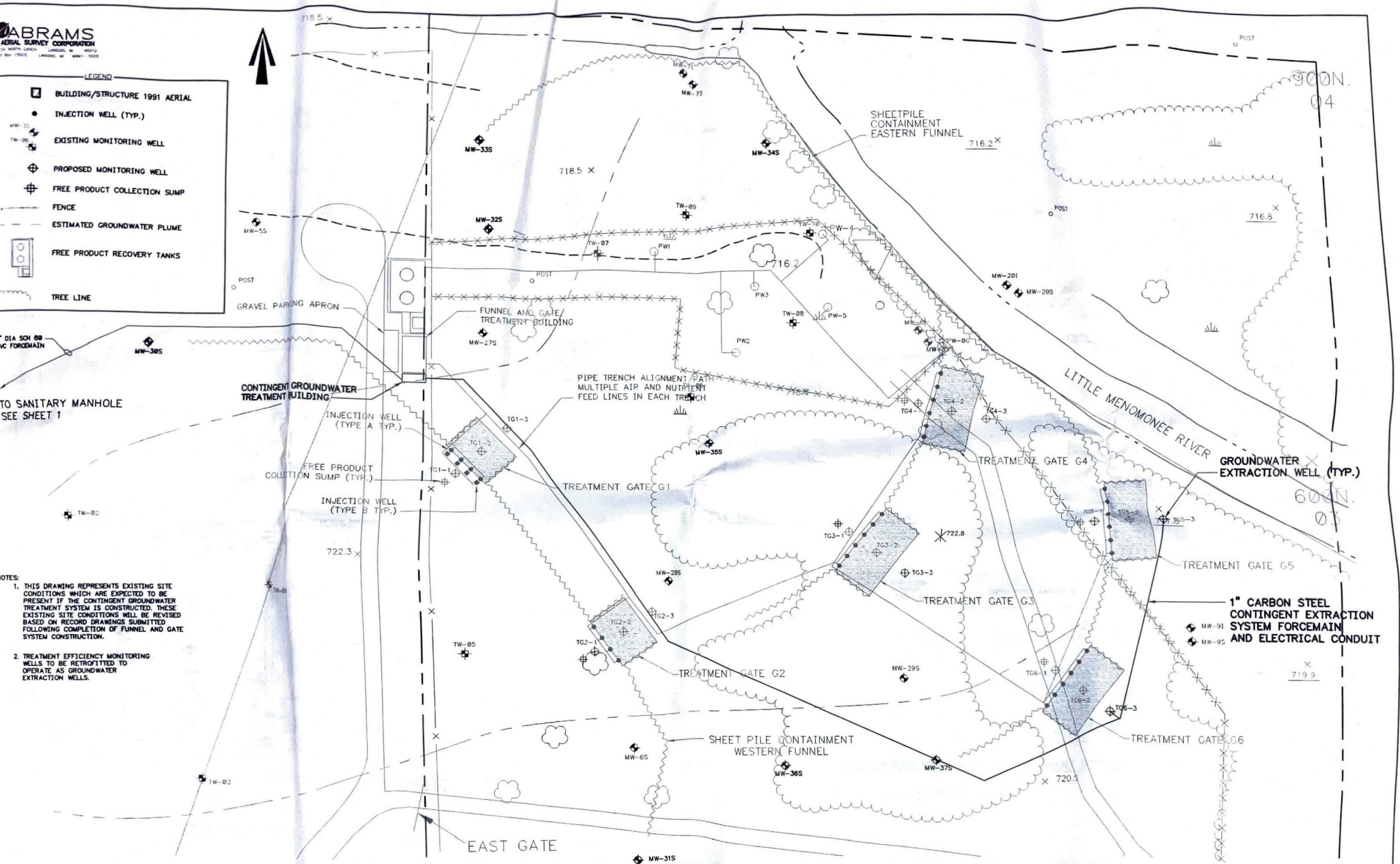


LEGEND

- BUILDING/STRUCTURE 1991 AERIAL
- INJECTION WELL (TYP.)
- EXISTING MONITORING WELL
- PROPOSED MONITORING WELL
- FREE PRODUCT COLLECTION SUMP
- FENCE
- ESTIMATED GROUNDWATER PLUME
- FREE PRODUCT RECOVERY TANKS
- TREE LINE

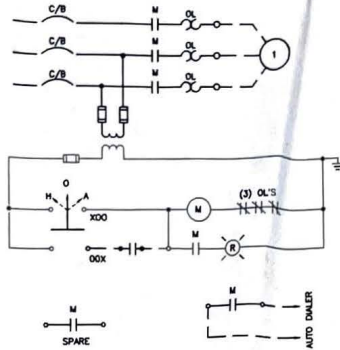
TO SANITARY MANHOLE
SEE SHEET 1

- NOTES:**
1. THIS DRAWING REPRESENTS EXISTING SITE CONDITIONS WHICH ARE EXPECTED TO BE PRESENT IF THE CONTINGENT GROUNDWATER TREATMENT SYSTEM IS CONSTRUCTED. THESE EXISTING SITE CONDITIONS WILL BE REVISED BASED ON RECORD DRAWINGS SUBMITTED FOLLOWING COMPLETION OF FUNNEL AND GATE SYSTEM CONSTRUCTION.
 2. TREATMENT EFFICIENCY MONITORING WELLS TO BE RETROFITTED TO OPERATE AS GROUNDWATER EXTRACTION WELLS.

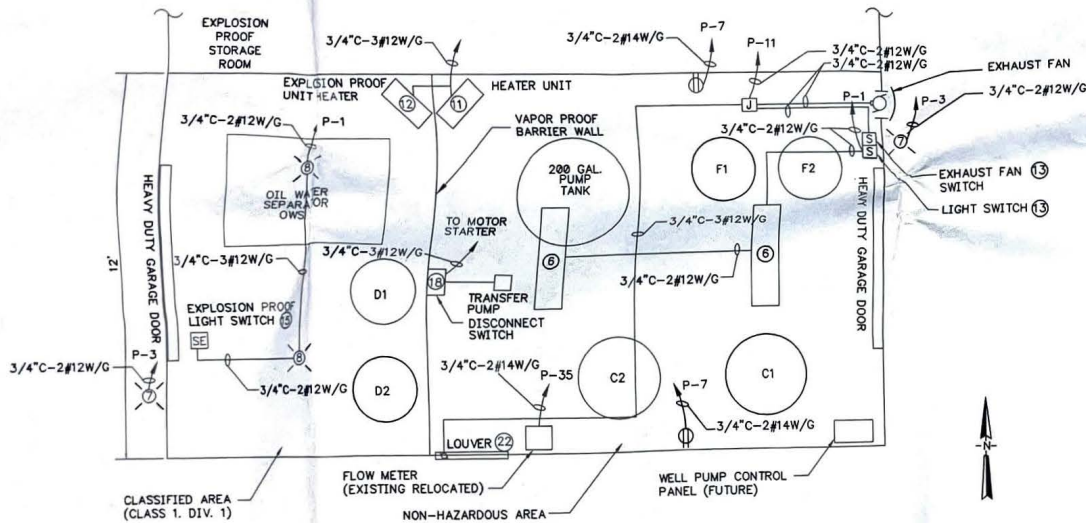


1" CARBON STEEL
CONTINGENT EXTRACTION
SYSTEM FORCEMAIN
AND ELECTRICAL CONDUIT

FINAL DESIGN SUBMITTAL		MOSSE - AMERICAN SITE Milwaukee, Wisconsin		DESIGNED	DATE	CLIENT APPROVALS	DATE	CONTINGENT SYSTEM SITE PLAN CONTINGENT GROUNDWATER TREATMENT SYSTEM	
				DRG. ENG.				DESIGNER	R.J.B.
				PROJ. ENG.				DATE	FEB 98
				PROJ. MGR.				DWG. NO.	CS-1
				APPROVED				SCALE	1" = 30'
				APPROVED				DATE	92857987982982200
								REV. NO.	9 OF 11



FUTURE TRANSFER PUMP



CONTINGENT GROUNDWATER TREATMENT BUILDING
N.T.S.

NOTE: FLOWMETER TO BE BADGER METER, MODEL M35, OR APPROVED EQUAL.

**CONTINGENT GROUNDWATER TREATMENT BUILDING
BILL OF MATERIALS**

ITEM	QTY	DESCRIPTION
1	0	DISCONNECT SWITCH, 600V, 3 PHASE, 3 WIRE, 200A, HEAVY DUTY, FUSIBLE, NEMA 1 LOCKABLE ENCLOSURE, EQUIPMENT GROUND BAR. SQUARE-D CAT. NO. H364 OR EQUAL. PROVIDE 150A CLASS J FUSES.
2	1	DISCONNECT SWITCH, 600V, 3 PHASE, 3 WIRE, 30A, HEAVY DUTY, FUSIBLE, NEMA 1 LOCKABLE ENCLOSURE, EQUIPMENT GROUND BAR. SQUARE-D CAT. NO. H361 OR EQUAL. PROVIDE CLASS J FUSES SIZED PER SINGLELINE DIAGRAM.
3	0	15HP BLOWER COMBINATION STARTER, INSTANTANEOUS TRIP MAGNETIC ONLY CIRCUIT BREAKER, 480V, 3 PHASE, NEMA SIZE 2, IN NEMA 1 LOCKABLE ENCLOSURE WITH EQUIPMENT GROUND BAR, MOMENTARY START-STOP PUSHBUTTONS, RED RUN PILOT LIGHT, EXTERNAL OVERLOAD RESET, 2 N.O. AUXILIARY CONTACTS, 120V CONTROL TRANSFORMER WITH 2 PRIMARY FUSES, 1 SECONDARY FUSE AND CONTROL CIRCUIT. SQUARE-D CAT. NO. SDG42V86 OR EQUAL.
4	0	10HP BLOWER COMBINATION STARTER, INSTANTANEOUS TRIP MAGNETIC ONLY CIRCUIT BREAKER, 480V, 3 PHASE, NEMA SIZE 1, IN NEMA 1 LOCKABLE ENCLOSURE WITH EQUIPMENT GROUND BAR, MOMENTARY START-STOP PUSHBUTTONS, RED RUN PILOT LIGHT, EXTERNAL OVERLOAD RESET, 2 N.O. AUXILIARY CONTACTS, 120V CONTROL TRANSFORMER WITH 2 PRIMARY FUSES, 1 SECONDARY FUSE AND CONTROL CIRCUIT. SQUARE-D CAT. NO. SCG44V86 OR EQUAL.
5	1	TRANSFER PUMP COMBINATION STARTER, INSTANTANEOUS TRIP MAGNETIC ONLY CIRCUIT BREAKER, 480V, 3 PHASE, NEMA SIZE 1, IN NEMA 1 LOCKABLE ENCLOSURE WITH EQUIPMENT GROUND BAR, HAND-OFF-AUTO SWITCH, RED RUN PILOT LIGHT, EXTERNAL OVERLOAD RESET, 2 N.O. AUXILIARY CONTACTS, 120V CONTROL TRANSFORMER WITH 2 PRIMARY FUSES, 1 SECONDARY FUSE AND CONTROL CIRCUIT. SQUARE-D CAT. NO. SCG41V86 OR EQUAL.
6	2	INDOOR LIGHT FIXTURE, FLUORESCENT, INDUSTRIAL, PENDANT MOUNT, 2 X 40 WATTS IN 1' X 4' STEEL HOUSING WITH WIRE GUARD AND 10% UPLIGHT.
7	2	OUTDOOR LIGHT FIXTURE, ENCLOSED, GASKETED, WALL MOUNT, WITH 70 WATT HIGH PRESSURE SODIUM LAMP, GLOBE AND PHOTOCELL.
8	2	INDOOR LIGHT FIXTURE, INCANDESCENT, FACTORY SEALED, EXPLOSION PROOF, CLASS 1, DIV. 1, PENDANT MOUNT, WITH 150 WATT LAMP AND GUARD. CROUSE-HINDS CAT. NO. EV4218 OR EQUAL.
9	0	PANELBOARD, 120/240VAC, 1 PHASE, 3 WIRE, 50A MAIN, 42 POLE, WITH LIGHTNING ARRESTOR, IN NEMA 1 ENCLOSURE. PROVIDE BREAKERS IN ACCORDANCE WITH PANEL SCHEDULE.
10	0	UNIT HEATER, 10KW, 480VAC, 3 PHASE, WITH INTEGRAL THERMOSTAT AND WALL MOUNTING BRACKET. CHROMALOX CAT. NO. LUH-10-43 OR EQUAL.
11	1	UNIT HEATER, 4KW, 480VAC, 3 PHASE, WITH INTEGRAL THERMOSTAT AND WALL MOUNTING BRACKET. CHROMALOX CAT. NO. LUH-04-43 OR EQUAL.
12	1	UNIT HEATER, 3KW, 480VAC, 3 PHASE, EXPLOSION PROOF, WITH INTEGRAL THERMOSTAT AND WALL MOUNTING BRACKET. MARKET CAT. NO. HLA12-480360-3-0-24-T OR EQUAL.
13	2	TOGGLE SWITCH, 120VAC, 20A, SINGLE POLE, SPECIFICATION GRADE, STANDARD TOGGLE, SURFACE MOUNTED WITH CAST BOX.
14	2	DUPLEX RECEPTACLE, 120VAC, 20A, GFI TYPE, SPECIFICATION GRADE, SURFACE MOUNTED WITH CAST BOX & WATERPROOF COVER.
15	1	TOGGLE SWITCH, GENERAL USE SNAP SWITCH, 1 POLE, 120VAC, FRONT OPERATED, EXPLOSION PROOF, SINGLE GANG, DEAD END ENCLOSURE, WITH 3/4\"/>
16	0	SINGLE RECEPTACLE, 120VAC, 20A, GFI TYPE, SPECIFICATION GRADE, SURFACE MOUNTED WITH CAST BOX & WATERPROOF COVER.
17	0	TRANSFORMER, DRY TYPE, 10KVA, 240/480V, 1 PHASE PRIMARY, AND 240/120V, 3 WIRE, 1 PHASE SECONDARY.
18	1	DISCONNECT SWITCH, 600V, 3 PHASE, 3 WIRE, 30A, HEAVY DUTY, NON-FUSIBLE, NEMA 1 LOCKABLE ENCLOSURE. SQUARE-D CAT. NO. H361 OR EQUAL.
19	0	WALL EXHAUST FAN, DIRECT DRIVE, CENTRIFUGAL WALL FAN, PENN VENTILATOR FUMEX CAT. NO. WFK13S RATED 735CFM AT .125\"/>
20	0	WALL LOUVER, 36\"/>
21	1	WALL EXHAUST FAN, DIRECT DRIVE, CENTRIFUGAL WALL FAN, PENN VENTILATOR FUMEX CAT. NO. WFK10S RATED 309CFM AT .125\"/>
22	1	WALL LOUVER, 24\"/>

REVISION	NO.	DATE	BY	REVISION

MOSS - AMERICAN SITE
Milwaukee, Wisconsin

WESTON
ENGINEERS, ARCHITECTS, PLANNERS

CHECKED	DATE	CLIENT APPROVALS	DATE

**CONTINGENT SYSTEM ELECTRICAL PLAN
AND SCHEDULES**

CONTINGENT GROUNDWATER TREATMENT SYSTEM

DRAWN	R.J.B.	DATE	MARCH 98	DWG. NO.	CS-3	REV. NO.	
SCALE	N.T.S.	DWG. NO.	02687007002002200	SHEET	11	OF	11