



State of Wisconsin
Jim Doyle, Governor

~~02-60-001042~~

Department of Agriculture, Trade and Consumer Protection
Rod Nilsestuen, Secretary

BRTS# 02-60-546106

December 17, 2004

Norbert Schleicher
General Manager
Kettle Lakes Cooperative
PO Box 285
Cedar Grove WI 53013

JAN 10 2005
By VS

DATCP Case 94519052001
DNR BRTS #02-60-001042

FID# 460121640

RE: Final notice--closure of agrichemical cleanup action at Kettle Lakes Cooperative, 430 First Street, Random Lake: DATCP Case 94519052001.

Dear Mr. Schleicher:

Thank you for submitting your well abandonment forms and updated GIS Registry information for your agrichemical cleanup case referenced above. Our receipt of this information satisfies all remaining conditions for closure pursuant to ch. NR 726, Wis. Adm. Code.

We have updated our database to show your case as "closed" as of the date of this letter. We have also forwarded the GIS Registry information about your case to the DNR and you will soon be able to view the information about your case on the web at the following location: <http://gomapout.dnr.state.wi.us/org/at/et/geo/gwur/index.htm>.

As with any closed cleanup case, this case may be reopened if additional information indicates that contamination from the site poses a threat to public health, safety or welfare, or the environment. If the case is reopened and additional work is required, funding under the Agricultural Chemical Cleanup Program (ACCP) may still be available for the work. Therefore, it is in your best interest to keep all documentation related to the cleanup project and ACCP reimbursement claims. We also remind you that, since your last ACCP claim was submitted more than one year ago, you may submit your final claim at this time.

Once again, we thank you for your efforts to restore the soil and groundwater at your facility. Please feel free to call me at (608) 224-4514 if you have any additional questions about your case or your final ACCP reimbursement claim.

Sincerely,

Stanley A. Senger
Hydrogeologist

c: Chris Hatfield, Northern | Art Fonk, DATCP EES | Pat Chung, WDNR SE Region (w/GIS Info.)

Agriculture generates \$51.5 billion for Wisconsin

2811 Agriculture Drive • PO Box 8911 • Madison, WI 53708-8911 • 608-224-5012 • Wisconsin.gov

WARRANTY DEED—To Corporation

STATE OF WISCONSIN 509782
FORM No. 4

Wisconsin Legal Blank Company
Milwaukee, Wisconsin 1906

This indenture, Made this 7th day of July, A. D., 1948,
between Raymond Zimmermann and Elsie Zimmermann, his wife

of the first part, and
Random Lake Co-operative Association
a ~~co-operative association~~ co-operative association
organized and existing under and by virtue of the laws of the State of Wisconsin, located
at Random Lake, Wisconsin, party of the second part.

Witnesseth, That the said parties of the first part, for and in consideration of the sum of
one dollar and other good and valuable consideration

to them in hand paid by the said party of the second part, the receipt whereof is hereby confessed and
acknowledged, have given, granted, bargained, sold, remised, released, aliened, conveyed and confirmed, and
by these presents do give, grant, bargain, sell, remise, release, alien, convey and confirm unto the said party
of the second part, its successors and assigns forever, the following described real estate, situated in the County
of Sherburn and State of Wisconsin, to-wit:

Lot One (1) and that part of Lot three (3), described
as follows: Commencing at the northwest corner of
Lot 3, thence East 43-1/3 feet, thence South to Lot
4, thence West 43-1/3 feet, thence north to place
of beginning, all in Block Twelve (12) First Addition
to the Village of Random Lake, as per the recorded
plat thereof.



Together with all and singular the hereunto and thereto appertaining or in any wise
concerning said real estate, right, title, interest, claim or demand whatsoever, of the said parties of the
first part, either in law or equity, either in possession or expectancy of the land to the above bargained premises
and their hereunto and thereto appertinances.

To have and to hold the said premises as above described with the hereunto and thereto appertinances, unto
the said party of the second part, and to its successors and assigns FOREVER.

And the said Raymond Zimmermann and Elsie Zimmermann, his wife

for themselves, their heirs, executors and administrators, do covenant, grant, bargain and agree
to and with the said party of the second part, its successors and assigns, that at the time of the executing and
delivery of these presents they are well seized of the premises above described, as of a good, sure,
perfect, absolute and indefeasible estate of inheritance in the law, in fee simple, and that the same are free and
clear from all incumbrances whatever.

and that the above bargained premises in the quiet and peaceable possession of the said party of the second

part, its successors and assigns, against all and every person or persons lawfully claiming the whole or any part thereof, they will forever WARRANT and DEFEND.
In Witness Whereof, the said parties of the first part have hereunto set their hands and seals this 7th day of July, A. D., 1948.

SIGNED AND SEALED IN PRESENCE OF

Philip G. Anderson
Philip G. Anderson
Doris Stephan
Doris Stephan

Raymond Zimmermann (SEAL)
Raymond Zimmermann
Elsie Zimmermann (SEAL)
Elsie Zimmermann (SEAL)

State of Wisconsin,
SHEBOYGAN County

Personally appeared to me, this 7th day of July, A. D., 1948, the above named Raymond Zimmermann and Elsie Zimmermann, his wife

Philip G. Anderson
Philip G. Anderson
Notary Public, Sheboygan County, Wis.
March 6, A. D., 1949



No. 509782

Raymond Zimmermann and Elsie Zimmermann, his wife

Random Lake Co-operative Association

Warranty Deed

REGISTER'S OFFICE,
State of Wisconsin,
SHEBOYGAN County

Recorded for Recording 12 21 48
150 of Public 4 21 48
Vol. 312 of Deeds on page 5097
Philip G. Anderson

509800

WARRANTY DEED

This Warranty Deed, made this _____ day of _____, 1948, between Katherine LaFudde, widow of the village of Elbert Lake, Sheboygan County, Wisconsin, Oscar LaFudde and Agnes LaFudde, his wife of Rockford, Illinois, Arno LaFudde and Gair LaFudde, his wife of Sheboygan Falls, Sheboygan County, Wisconsin and Ervin LaFudde and Elizabeth LaFudde, his wife of Appleton, Wisconsin, parties of the first part, and Donald Paul Gross and Hildegard Gross, his wife jointly or to the survivor of either of them, parties of the second part,

433592
STATUTORY DEED

W.E. Hoelz, William F. Wilk and Ewald Doegnitz, Trustees of the Segregated Trust of the State Bank of Random Lake, Wisconsin, grantors, of Random Lake, Wisconsin, hereby convey and warrant to Badger Tag Company, a Wisconsin Corporation, grantee, of Random Lake, Wisconsin, for the sum of one dollar and other good and valuable consideration, the following tract of land together with the buildings thereon situated in Sheboygan County, Wisconsin, to-wit:

Lots numbered five (5) six (6) seven (7) eight (8) nine (9) ten (10) eleven (11) in block number eleven (11) all in the First Addition to the Village of Random Lake, Sheboygan County, Wisconsin.

In Witness Whereof said trustees have caused these presents to be signed by W.E. Hoelz, William F. Wilk and Ewald Doegnitz, trustees of the Segregated Trust of the State Bank of Random Lake, this 24th day of December, 1942.

In Presence of:

Mavis A. Rash
Bernice M. Heine

William F. Wilk
Trustee

Ewald Doegnitz
Trustee

W.E. Hoelz
Trustee

State of Wisconsin)
Sheboygan County) ss

Personally came before me, this 24th day of December, 1942, the above named W.E. Hoelz, William F. Wilk and Ewald Doegnitz, to me known to be the persons who executed the foregoing instrument, and to me known to be such Trustees of the Segregated Trust of the State Bank of Random Lake, and acknowledged that they executed the foregoing instrument as such Trustees as the deed of said Segregated Trust of the State Bank of Random Lake.

L. L. Krueger
Notary Public, Sheboygan County, Wis.
My Commission Expires June 24, 1943.



Rec. 550 (3d)
133582
W. E. Hoebig, et al "Tr."

to
Carriage Tag Company

Carriage Tag Co.

REGISTRAR'S OFFICE,
JEFFERSON COUNTY, WISCONSIN.
Record the 12th day of
April A. D. 1912 at 4:06
P. M., and recorded in Vol. 263
of this book on page 213
Alice M. Colman

FORM 139--WARRANTY DEED - TO JOINT TENANTS. (Section 239.15 Wisconsin Statutes) 133690

This Indenture, Made this 20th day of April, A. D. 1912,
between [Name], of the first part,
and [Name], with [Name], husband of [Name],
of the second part,

Witnesseth, That the said party of the first part, for and in consideration of the sum of
[Amount] Dollars (\$[Amount]), to [Name] of the second part,

in hand paid by the said parties of the second part, the receipt whereof is hereby acknowledged and
acknowledged, he [Name] of the first part, given, granted, bargained, sold, remised, released, aliened, conveyed, confirmed, and by
the covenants do hereby give, grant, bargain, sell, remise, release, alien, convey and ratify unto the said parties of
the second part, in joint tenancy, then heirs, and assigns forever, the following described real estate, situated in the
County of [Name] and State of Wisconsin, to-wit:

[Description of real estate]

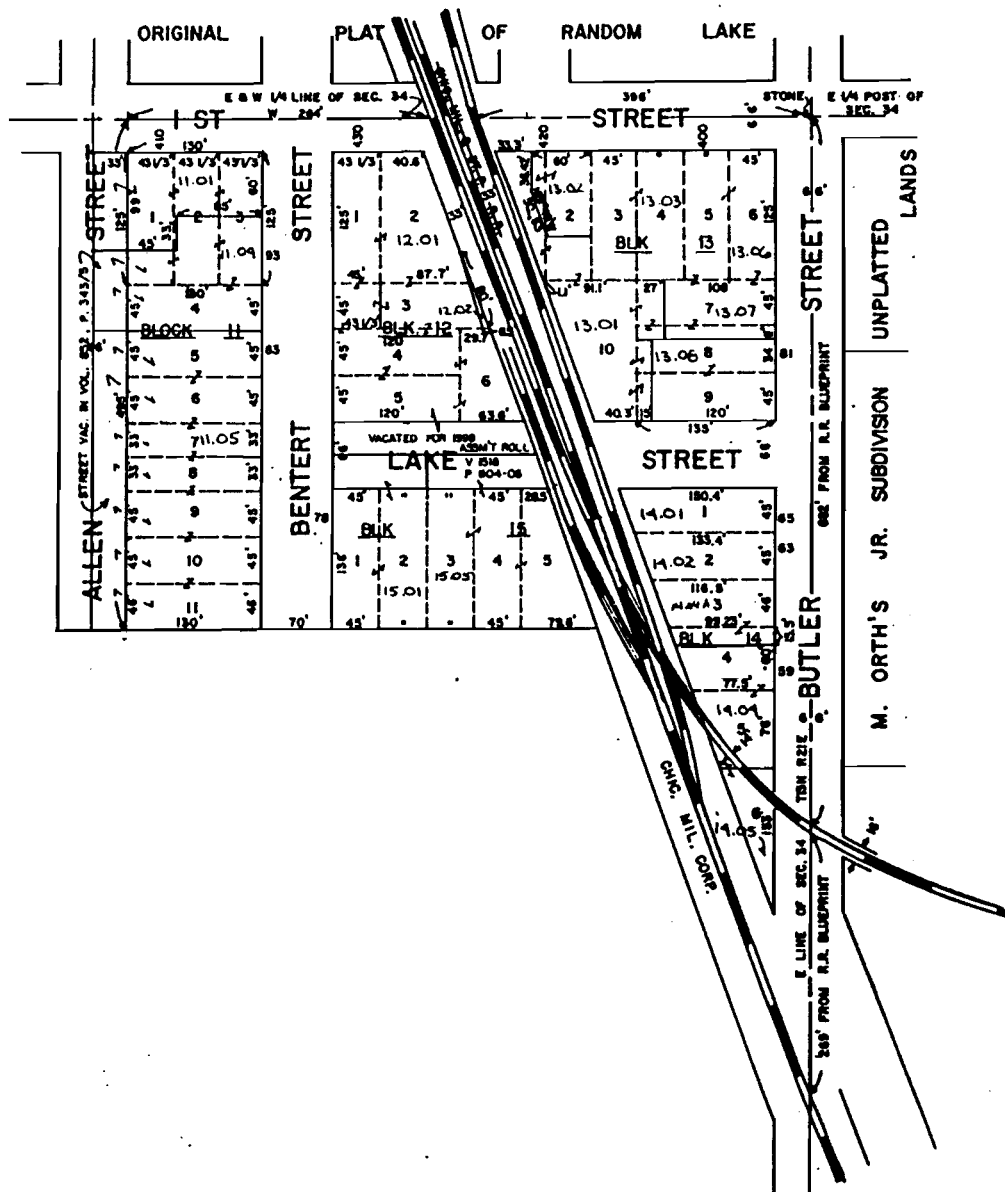


Together, with all and singular the hereditaments and appurtenances thereto in anywise
appertaining; and all the estate, right, title, interest, claim or demand whatsoever, of the said party of the first
part, (either in law or equity, either in possession or expectancy of, in and to the above bargained premises, and their
hereditaments and appurtenances.

To have and to hold the said premises as above described with the hereditaments and appurtenances, unto
the said parties of the second part, in joint tenancy, and not as tenants in common, and to their respective heirs and
assigns FOREVER.

MAP OF THE
 FIRST ADDITION
 TO THE
 VILLAGE OF RANDOM LAKE
 VILLAGE OF RANDOM LAKE
 PRT OF THE NE 1/4 OF THE SE 1/4—SECTION 34
 T13N R 21E TOWN OF SHERMAN

SCALE: 1"=100'-0"



Scale 1 : 3,839



This is a test version of the application.

This version intended for evaluation only. Documentation...

△ WTM coordinates: 684531, 343829

BADGER TAG : LABEL

Scale 1 : 3,839

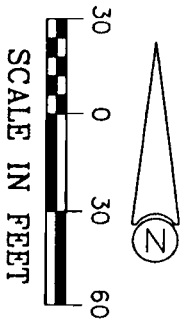
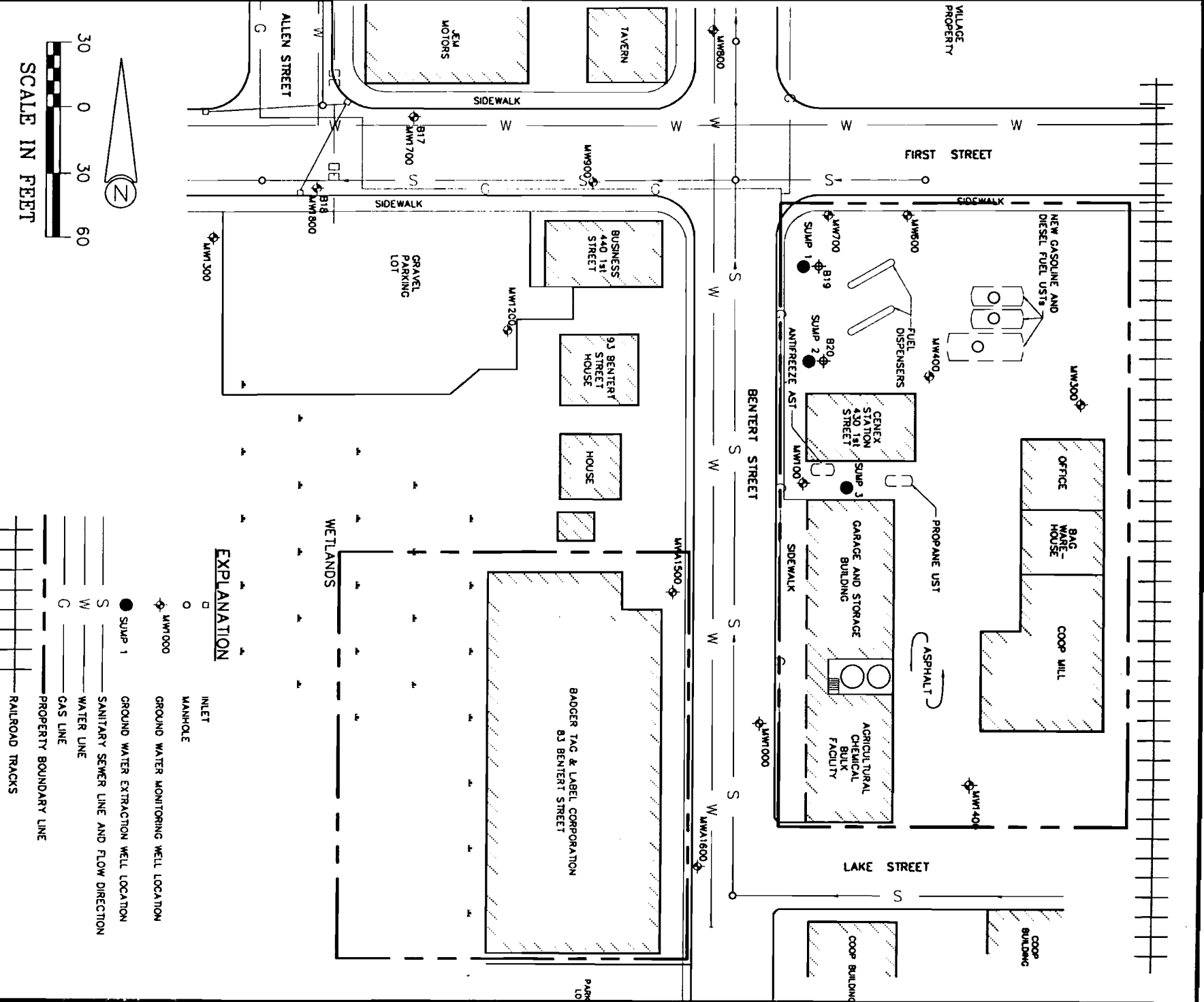


This is a test version of the application.

This version intended for evaluation only. Documentation...

△WTM coordinates: 684590, 343868

KETTLE LAKES COOP



DRAWN BY: VLG PROJECT: 01-1408-1487 DATE: 8/26/02

REV. DATE THIS DRAWING AND ALL INFORMATION CONTAINED THEREON IS THE PROPERTY OF NORTHERN ENVIRONMENTAL INCORPORATED AND SHALL NOT BE COPIED OR USED EXCEPT FOR THE PURPOSE FOR WHICH IT IS EXPRESSLY FURNISHED.

Northern EnvironmentalTM
Hydrologists · Engineers · Geologists

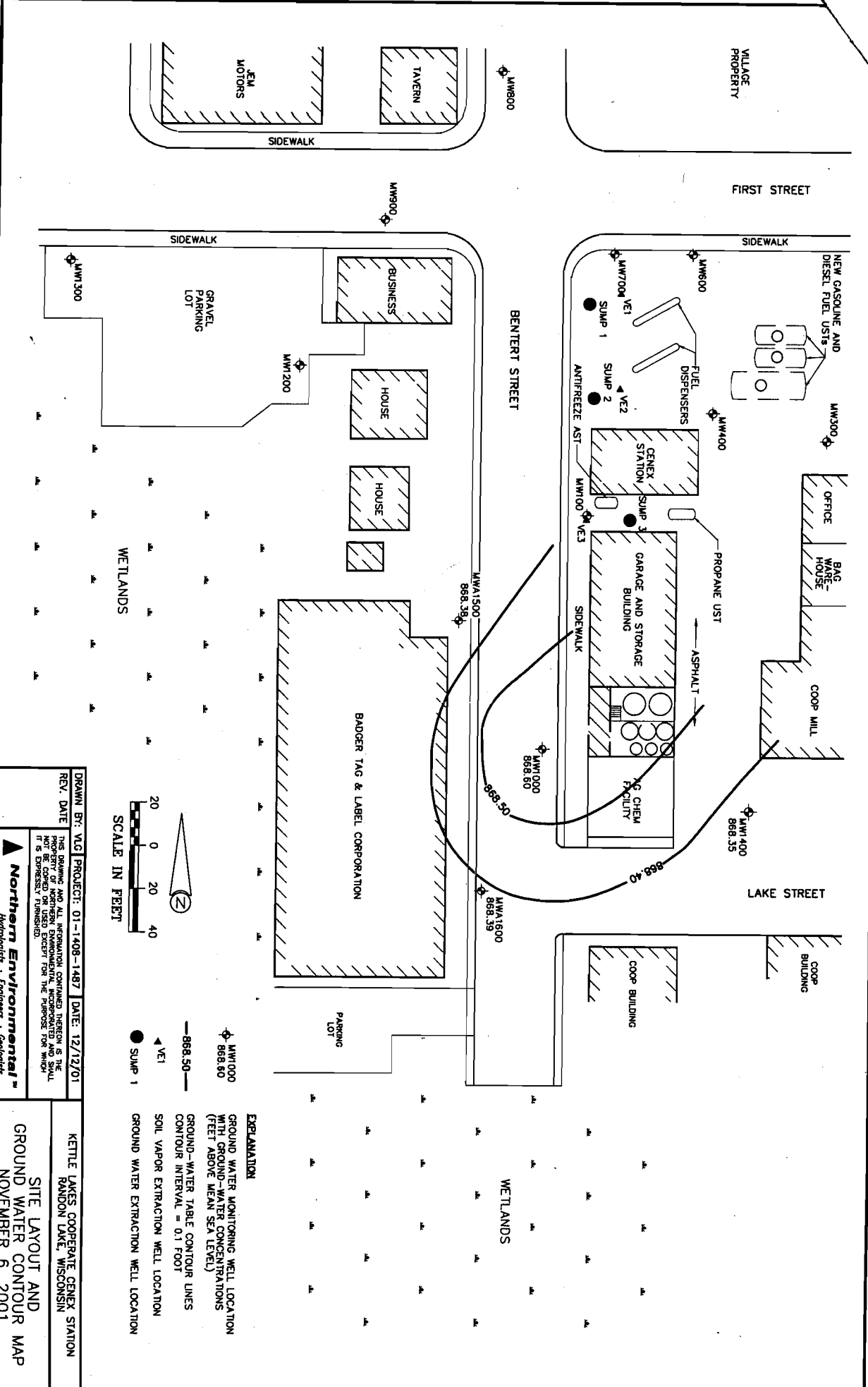
EXPLANATION

◻	INLET
○	MANHOLE
◊	GROUND WATER MONITORING WELL LOCATION
●	GROUND WATER EXTRACTION WELL LOCATION
S	SANITARY SEWER LINE AND FLOW DIRECTION
W	WATER LINE
G	GAS LINE
—	PROPERTY BOUNDARY LINE
—	RAILROAD TRACKS

KETTLE LAKES COOPERATIVE CENEX STATION
RANDOM LAKE, WISCONSIN

SITE LAYOUT

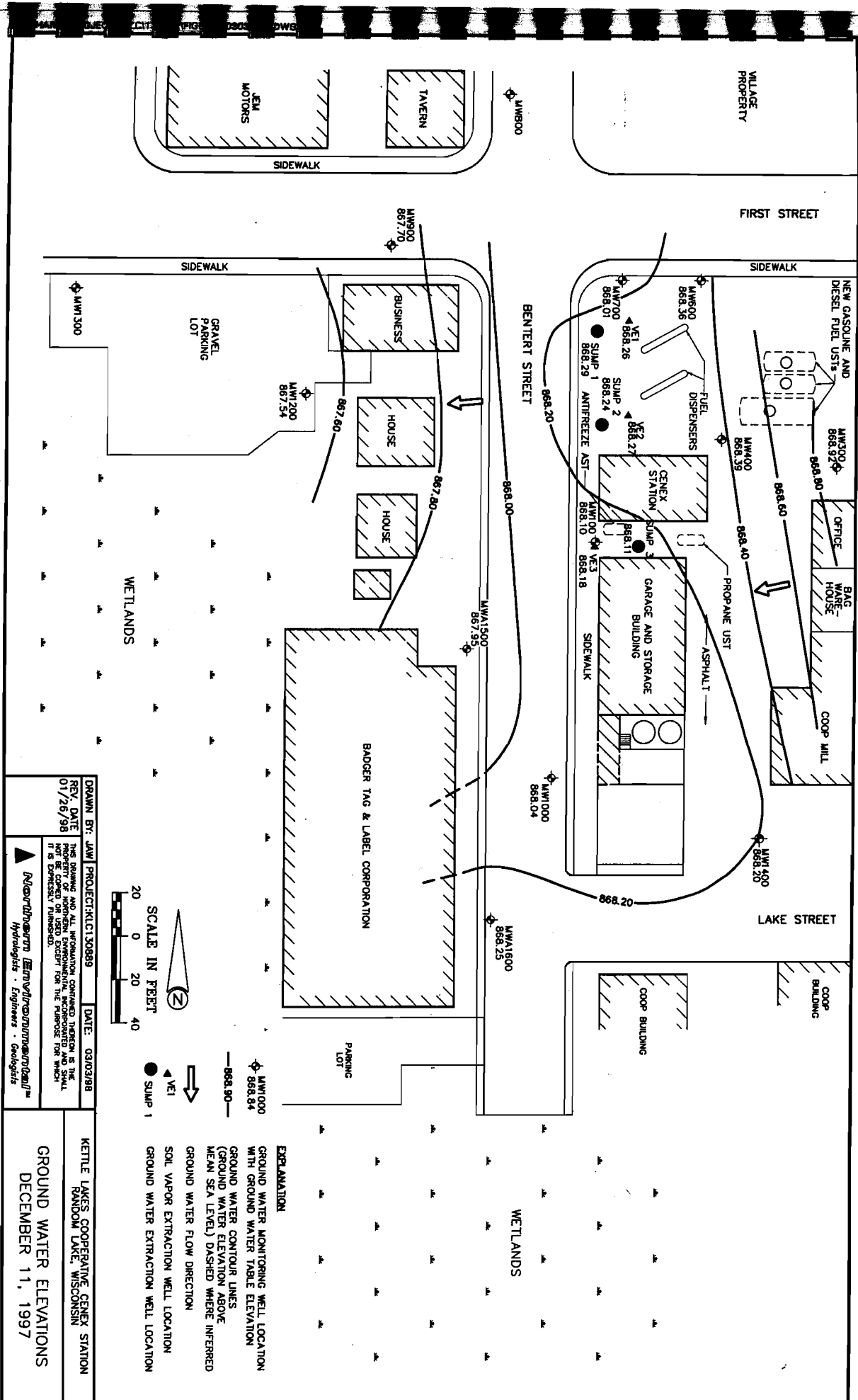
FIGURE:



DRAWN BY: VAG | PROJECT: 01-1408-1487 | DATE: 12/12/01
 REV. DATE: _____
 THIS DRAWING AND ALL INFORMATION CONTAINED THEREON IS THE SOLE PROPERTY OF AND NOT TO BE COPIED OR USED EXCEPT FOR THE PURPOSES FOR WHICH IT IS EXPRESSLY FURNISHED.
Northern Environmental™
 Hydrologists · Engineers · Geologists

KETTLE LAKES COOPERATE GENEX STATION
 RANDON LAKE, WISCONSIN
**SITE LAYOUT AND
 GROUND WATER CONTOUR MAP**
 NOVEMBER 6, 2001

FIGURE 2



EXPLANATION

- ◊ MW1000 868.84 GROUND WATER MONITORING WELL LOCATION WITH GROUND WATER TABLE ELEVATION
- 868.90— GROUND WATER CONTOUR LINES (GROUND WATER ELEVATION ABOVE MEAN SEA LEVEL) DASHED WHERE INFERRED
- ⇨ GROUND WATER FLOW DIRECTION
- ◊ SOIL VAPOR EXTRACTION WELL LOCATION
- SUMP 1 GROUND WATER EXTRACTION WELL LOCATION

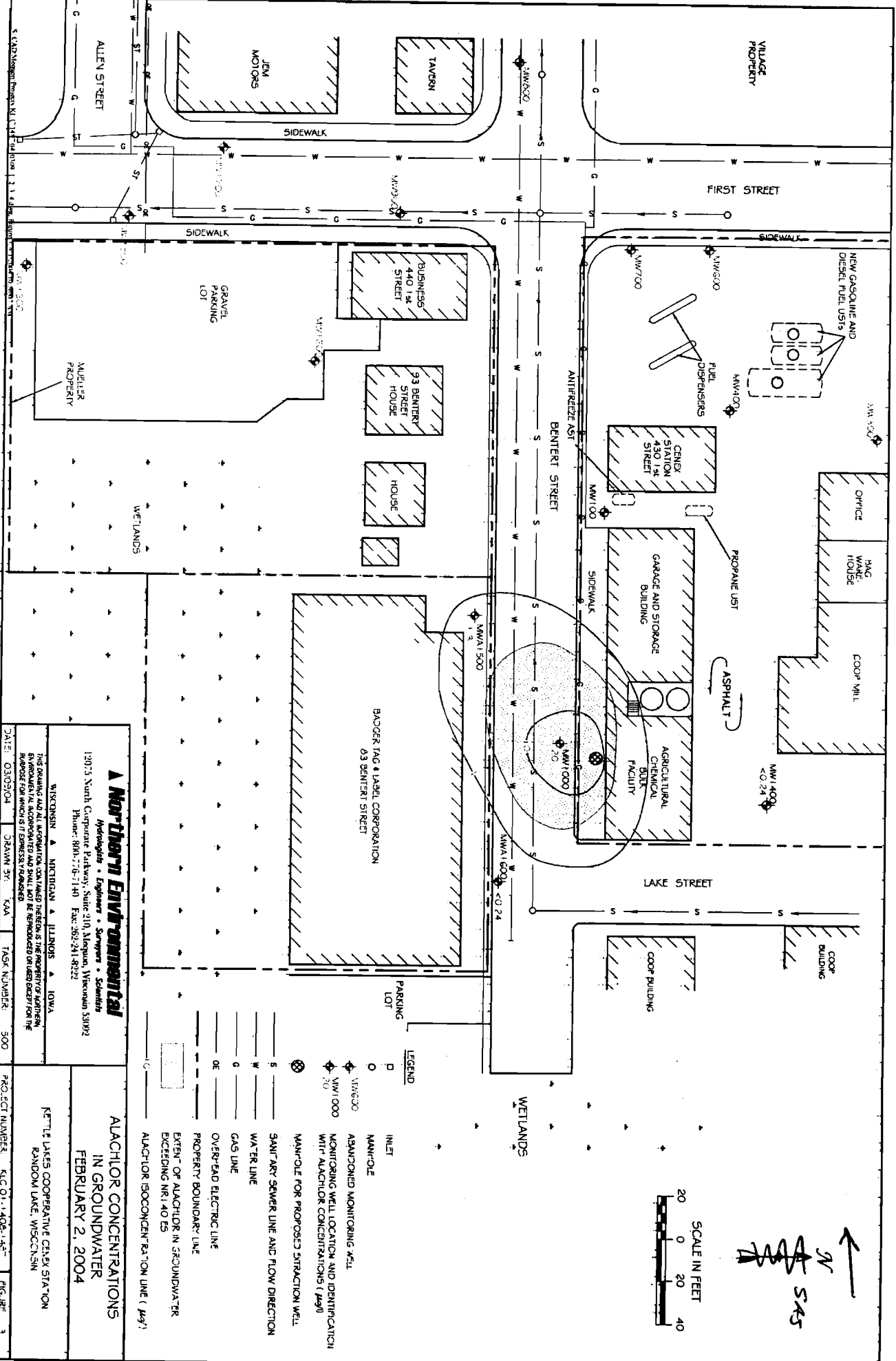
DRAWN BY: JAM PROJECT NO: 130889 DATE: 03/03/98

REV. DATE: 01/26/98 THIS DRAWING AND ALL INFORMATION CONTAINED THEREIN IS THE PROPERTY OF THE ENGINEER AND SHALL NOT BE COPIED OR USED EXCEPT FOR THE PURPOSE FOR WHICH IT IS EXPRESSLY FURNISHED.

**KETTLE LAKES COOPERATIVE GENEX STATION
RANDOM LAKE, WISCONSIN**

**GROUND WATER ELEVATIONS
DECEMBER 11, 1997**

FIGURE 3



ALLEN STREET

FIRST STREET

LAKE STREET

BENTER STREET

ANTIREZE AVE

WETLANDS

WETLANDS

WETLANDS

TAYLOR

JEN MOTORS

BUSINESS 440 1/2 B STREET

93 BENTER STREET HOUSE

HOUSE

HOUSE

BAJOCER TAG & LABEL CORPORATION 83 BENTER STREET

AGRICULTURAL CHEMICAL BOTTLE FACILITY

GARAGE AND STORAGE BUILDING

STATION 430 1/2 B STREET

FUEL DISPENSERS

NEW GASOLINE AND DIESEL FUEL USTs

OFFICE

MAG. WAREHOUSE

COOP MILL

GAVEL PARKING LOT

MUELLER PROPERTY

WETLANDS

WETLANDS

WETLANDS

WETLANDS

WETLANDS

WETLANDS

WETLANDS

WETLANDS

WETLANDS

WETLANDS

WETLANDS

WETLANDS

WETLANDS

WETLANDS

WETLANDS

WETLANDS

WETLANDS

WETLANDS

WETLANDS

WETLANDS

WETLANDS

WETLANDS

WETLANDS

WETLANDS

WETLANDS

WETLANDS

WETLANDS

WETLANDS

WETLANDS

WETLANDS

WETLANDS

WETLANDS

WETLANDS

WETLANDS

WETLANDS

WETLANDS

WETLANDS

WETLANDS

WETLANDS

WETLANDS

WETLANDS

WETLANDS

WETLANDS

WETLANDS

WETLANDS

WETLANDS

WETLANDS

WETLANDS

WETLANDS

WETLANDS

WETLANDS

WETLANDS

WETLANDS

WETLANDS

WETLANDS

WETLANDS

WETLANDS

WETLANDS

WETLANDS

WETLANDS

WETLANDS

WETLANDS

WETLANDS

WETLANDS

WETLANDS

WETLANDS

WETLANDS

WETLANDS

WETLANDS

WETLANDS

WETLANDS

WETLANDS

WETLANDS

WETLANDS

WETLANDS

WETLANDS

WETLANDS

WETLANDS

WETLANDS

WETLANDS

WETLANDS

WETLANDS

WETLANDS

WETLANDS

WETLANDS

WETLANDS

WETLANDS

WETLANDS

WETLANDS

WETLANDS

WETLANDS

WETLANDS

WETLANDS

WETLANDS

WETLANDS

WETLANDS

WETLANDS

WETLANDS

WETLANDS

WETLANDS

WETLANDS

WETLANDS

WETLANDS

WETLANDS

WETLANDS

WETLANDS

WETLANDS

WETLANDS

WETLANDS

WETLANDS

WETLANDS

WETLANDS

WETLANDS

WETLANDS

WETLANDS

WETLANDS

WETLANDS

WETLANDS

WETLANDS

WETLANDS

WETLANDS

WETLANDS

WETLANDS

WETLANDS

WETLANDS

WETLANDS

WETLANDS

WETLANDS

WETLANDS

WETLANDS

WETLANDS

WETLANDS

WETLANDS

WETLANDS

WETLANDS

WETLANDS

WETLANDS

WETLANDS

WETLANDS

WETLANDS

WETLANDS

WETLANDS

WETLANDS

WETLANDS

WETLANDS

WETLANDS

WETLANDS

WETLANDS

WETLANDS

WETLANDS

WETLANDS

WETLANDS

WETLANDS

WETLANDS

WETLANDS

WETLANDS

WETLANDS

WETLANDS

WETLANDS

WETLANDS

WETLANDS

WETLANDS

WETLANDS

WETLANDS

WETLANDS

WETLANDS

WETLANDS

WETLANDS

WETLANDS

WETLANDS

WETLANDS

WETLANDS

WETLANDS

WETLANDS

WETLANDS

WETLANDS

WETLANDS

WETLANDS

WETLANDS

WETLANDS

WETLANDS

WETLANDS

WETLANDS

WETLANDS

WETLANDS

WETLANDS

WETLANDS

WETLANDS

WETLANDS

WETLANDS

WETLANDS

WETLANDS

WETLANDS

WETLANDS

WETLANDS

WETLANDS

WETLANDS

WETLANDS

WETLANDS

WETLANDS

WETLANDS

WETLANDS

WETLANDS

WETLANDS

WETLANDS

WETLANDS

WETLANDS

WETLANDS

WETLANDS

WETLANDS

WETLANDS

WETLANDS

WETLANDS

WETLANDS

WETLANDS

WETLANDS

WETLANDS

WETLANDS

WETLANDS

WETLANDS

WETLANDS

WETLANDS

WETLANDS

WETLANDS

WETLANDS

WETLANDS

WETLANDS

WETLANDS

WETLANDS

WETLANDS

WETLANDS

WETLANDS

WETLANDS

WETLANDS

WETLANDS

WETLANDS

WETLANDS

WETLANDS

WETLANDS

WETLANDS

WETLANDS

WETLANDS

WETLANDS

WETLANDS

WETLANDS

WETLANDS

WETLANDS

WETLANDS

WETLANDS

WETLANDS

WETLANDS

WETLANDS

WETLANDS

WETLANDS

WETLANDS

WETLANDS

WETLANDS

WETLANDS

WETLANDS

WETLANDS

WETLANDS

WETLANDS

WETLANDS

WETLANDS

WETLANDS

WETLANDS

WETLANDS

WETLANDS

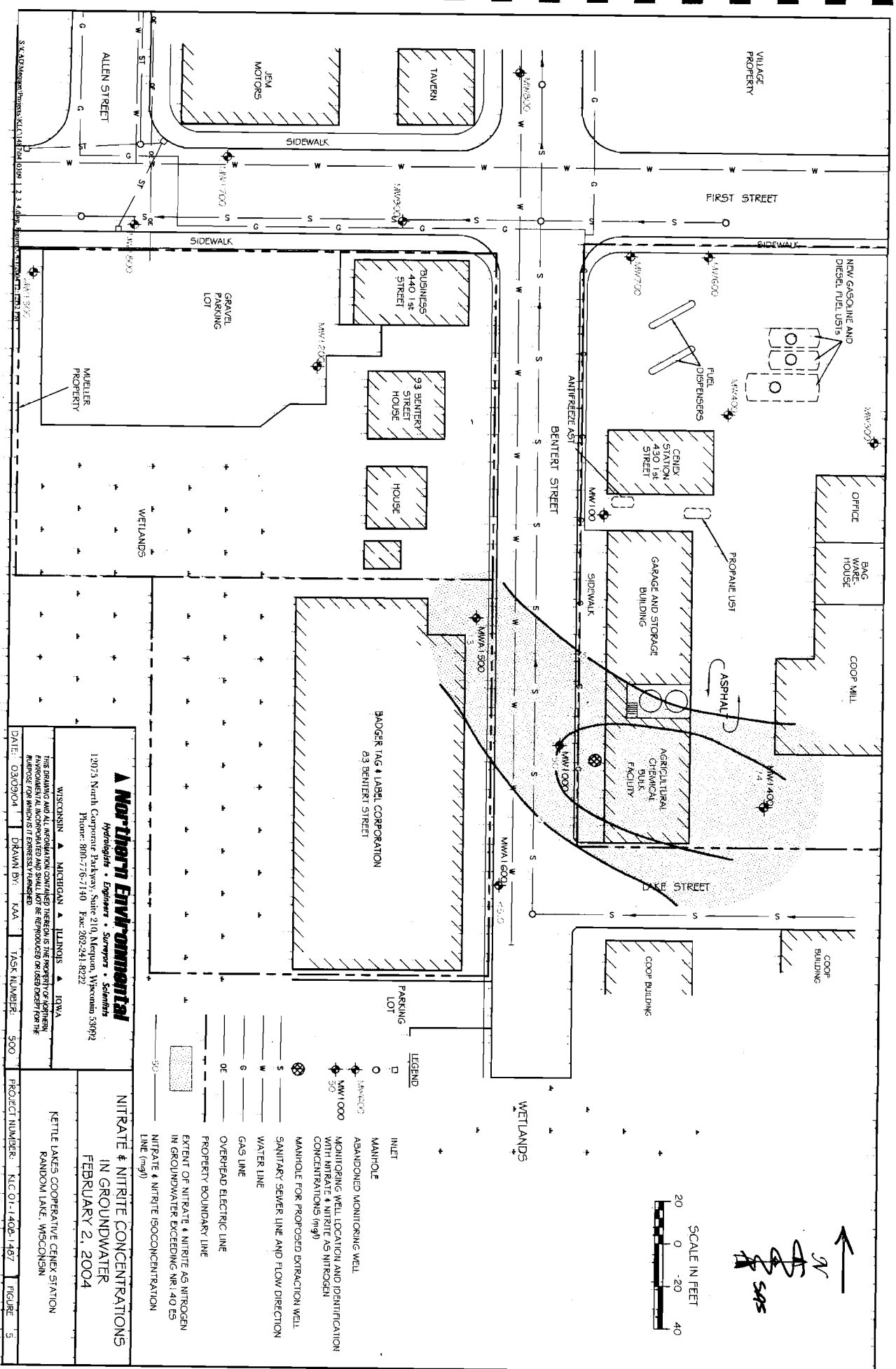
WETLANDS

WETLANDS

WETLANDS

WETLANDS

WETLANDS



▲ Northern Environmental
 Hydrologists • Engineers • Surveyors • Scientists
 13075 North Corporate Parkway, Suite 210, Mequon, Wisconsin 53092
 Phone: 800-776-7140 Fax: 262-241-8222

WISCONSIN ▲ MICHIGAN ▲ ILLINOIS ▲ IOWA

This drawing and all information contained therein are the property of Northern Environmental, Incorporated and shall not be reproduced or used in whole or in part for any purpose for which it was not prepared without the written consent of Northern Environmental, Incorporated.

DATE: 03/03/04 DRAWN BY: KAA TASK NUMBER: 500 PROJECT NUMBER: N.E.C. 1408-1487 FIGURE: 5

NITRATE & NITRITE CONCENTRATIONS IN GROUNDWATER
 FEBRUARY 2, 2004

KETTLE LAKES COOPERATIVE GENEX STATION
 RANDOM LAKE, WISCONSIN

ALLEEN STREET
 FIRST STREET
 BENTERT STREET
 DUFF STREET

JPM MOTORS
 TAVERN
 BUSINESS 4401 ST
 93 BENTERT STREET HOUSE
 HOUSE
 GARAGE AND STORAGE BUILDING
 AGRICULTURAL CHEMICAL BULK FACILITY
 COOP MILL
 COOP BUILDING

NEW GASOLINE AND DIESEL FUEL US15
 FUEL DISPENSERS
 GENEX STATION 1ST STREET
 PROPRANE US1
 ASPHALT
 BAG HOME HOUSE
 OFFICE

GRAVEL PARKING LOT
 WETLANDS
 BADGER TAG & LABEL CORPORATION
 83 BENTERT STREET
 PARKING LOT

MW1000
 MW1001
 MW1002
 MW1003
 MW1004
 MW1005
 MW1006
 MW1007
 MW1008
 MW1009
 MW1010

Table 2 Groundwater Sample Laboratory Results, Kettle Lakes Cooperative, Agricultural Chemical Release, Random Lake, Wisconsin

Sample Point	Sample Date	Detected Herbicide (micrograms per liter)															Detected Herbicides (milligrams per liter)		Laboratory	
		Desisopropyl-atrazine	Desethyl-atrazine	Atrazine	Total Chlorinated Atrazine**	Alachlor	Acetochlor	Metolachlor	Simazine	Prometon	Propazine	Cyanazine	Pendi-methalin	Eptam	Butylate	Trifluralin	Nitrate + Nitrite	Ammonia		
MW900	07/27/94	-	-	<1.59	<1.59	<2.11	-	<2.01	-	-	-	<4.22	<1.97	<1.29	<2.08	<2.38	0.10	0.22	B.E.S.T	
MW1000	07/27/94	-	-	<636	<636	47,600	-	1032.0	-	-	-	<1688	<788	<516	<832	<952	41.1	0.16	B.E.S.T	
	07/27/94	-	-	-	-	-	-	-	-	-	-	-	-	-	-	-	41.5	0.30	B.E.S.T	
	08/15/94	-	-	<159.00	<159.00	10,200	-	216.0	-	-	-	-	-	-	-	-	42.5	0.74	B.E.S.T	
	08/15/94	-	-	<159.00	<159.00	10,800	-	225.0	-	-	-	-	-	-	-	-	-	-	B.E.S.T	
	12/27/95	1.5	1.4	23	25.9	1700	-	13	3.1	3.2	5.6	99	8.5	4.6	-	-	-	-	Northern Lakes	
	08/19/96	1.4	1.2	5	7.6	18,000	-	1800	0.47	4.3	2.9	7.6	6	0.52	-	-	-	-	Northern Lakes	
	06/05/97	-	-	16	16	49,800	-	7000	-	-	-	39	-	-	-	-	-	-	Northern Lakes	
	12/11/97	-	-	-	41	900	-	560	-	-	-	37	-	-	-	-	-	-	-	Northern Lakes
	11/23/98	-	-	-	14	270	-	170	-	-	-	18	-	-	-	-	-	40	<0.5	ECCS
	06/09/99	-	-	-	33	11,900	<3.0	1400	-	-	-	<0.62	-	-	-	-	-	65	0.73	ECCS
	11/30/99	-	-	-	10	600	-	200	-	-	-	16	-	-	-	-	-	23	<0.5	ECCS
	05/25/00	-	-	-	11	200	-	230	-	-	-	32	-	-	-	-	-	40	<0.5	ECCS
	04/05/01	0.48	0.90	3.0	4.38	3000	6.4	420	0.44	0.63	0.67	6	1.1	0.92	2.7	<0.025	18	<2.0	ECCS	
	11/06/01	0.67	0.47	2.7	3.84	200	480	110	<0.28	<0.11	0.34	5.3	0.98	1.4	2.3	<0.12	18	0.17	ECCS	
	05/14/02	<17	<7.3	<6.5	<30.8	6900	6400	460	<10	<33	<33	<5.3	<4.5	<17	<18	<15	<18	20	<1.0	ECCS
	04/09/03	0.48	<0.039	0.3	8.7	17	27	43	<0.020	0.22	0.3	5.1	0.21	0.35	0.61	0.13	43	<1.0	ECCS	
	07/17/03	0.36	0.53	1.6	2.49	10	100	46	<0.0201	<0.034	0.49	3.1	<0.010	0.35	0.90	<0.031	64	<1.0	ECCS	
10/20/03	0.4	0.47	3.2	4.07	25	45	49	<0.023	0.42	1.0	5.4	<0.011	0.56	1.4	<0.034	82	<1.0	ECCS		
02/02/04	0.43	0.58	2.1	3.11	20	35	45	<0.030	<0.012	0.83	3.5	<0.011	1.1	3.2	<0.022	50	<5.0	ECCS		
MW1200	12/28/95	ND	0.16	0.28	0.44	ND	-	ND	ND	0.22	ND	0.18	ND	ND	-	-	-	-	Northern Lakes	
MWA1400	08/19/96	ND	0.30	2.1	2.4	ND	-	ND	ND	1.8	0.10	0.16	ND	0.11	-	-	-	-	Northern Lakes	
	06/05/97	-	-	1.7	1.7	ND	-	ND	-	-	-	2.1	-	-	-	-	-	-	Northern Lakes	
	12/11/97	-	-	-	1.7	ND	-	0.34	-	-	-	0.39	-	-	-	-	58	-	Northern Lakes	
	11/23/98	-	-	-	1.3	<0.054	-	<0.12	-	-	-	0.33	-	-	-	-	19	0.55	ECCS	
	05/27/99	-	-	-	4.88	<0.12	<0.12	<0.12	-	-	-	<0.025	-	-	-	-	130	16	ECCS	
	11/30/99	-	-	-	1.1	0.16 "J"	-	0.24 "J"	-	-	-	1.3	-	-	-	-	24	<0.5	ECCS	
	05/25/00	-	-	-	1.6	<0.054	-	0.96	-	-	-	3.3	-	-	-	-	35	19	ECCS	
	04/05/01	0.19	0.25	0.66	1.1	<0.035	2.2	<0.020	0.078	1.6	0.041	0.11	<0.013	<0.012	<0.022	<0.026	26	<2.0	ECCS	
	11/06/01	<0.048	0.16	1.0	1.16	<0.23	<0.47	<0.43	<0.28	1.0	<0.010	0.26	<0.26	<0.096	<0.10	<0.12	22	0.35	ECCS	
	05/14/02	0.33	0.47	0.5	1.3	<0.026	<0.029	0.12	<0.039	0.76	0.13	0.18	<0.018	<0.068	<0.072	<0.060	42	<1.0	ECCS	
	10/20/03	0.26	0.31	0.6	1.14	<0.029	<0.026	0.19	<0.023	0.68	<0.033	0.21	<0.0097	0.083	<0.04	<0.03	49	1.0	ECCS	
	02/02/04	0.27	0.38	0.3	1.07	<0.024	<0.023	<0.024	<0.030	0.56	0.019	0.21	<0.011	<0.012	<0.011	<0.022	74	<5	ECCS	
MWA1500	08/19/96	0.19	0.75	3.4	4.34	1.2	-	0.28	ND	4.4	0.24	0.1	ND	0.080	-	-	-	-	Northern Lakes	
	06/05/97	-	-	2.3	2.3	0.6	-	0.69	-	-	-	0.33	-	-	-	-	-	-	Northern Lakes	
	12/11/97	-	-	-	4.8	3.2	-	0.37	-	-	-	0.34	-	-	-	-	22	-	Northern Lakes	
	11/23/98	-	-	-	7.5	6.4	-	3.6	-	-	-	1.1	-	-	-	-	1.4	<0.5	ECCS	
	05/27/99	-	-	-	1.9	0.54	<0.12	<0.12	-	-	-	0.13	-	-	-	-	6.9	<0.5	ECCS	
	11/30/99	-	-	-	13	23	-	7.0	-	-	-	1.5	-	-	-	-	14	<0.5	ECCS	
	05/25/00	-	-	-	2.7	3.3	-	1.3	-	-	-	0.34	-	-	-	-	26	<0.5	ECCS	
	04/05/01	0.23	0.55	0.55	1.33	0.24	<0.031	<0.020	0.019	0.82	0.031	0.045	<0.013	<0.012	<0.022	<0.026	13	<2.0	ECCS	
	11/06/01	<0.048	0.3	1.7	2.0	1.3	<0.47	<0.43	<0.28	1.4	<0.10	0.29	<0.26	<0.096	<0.10	<0.12	9.7	0.039	ECCS	
	05/14/02	0.18	0.42	0.48	1.08	0.2	<0.039	0.066	<0.039	0.57	<0.13	<0.021	<0.018	<0.070	<0.074	<0.062	4.7	<1.0	ECCS	
10/20/03	0.24	0.41	1.2	1.85	0.85	<0.026	0.23	<0.021	0.76	0.15	0.18	<0.0098	<0.056	<0.040	<0.030	9.3	<1.0	ECCS		
02/02/04	0.19	0.40	1.4	1.99	1.3	<0.024	0.33	0.056	1	0.052	0.15	<0.011	0.056	0.043	<0.022	13	<5.0	ECCS		
MWA1600	08/19/96	ND	ND	ND	ND	ND	-	ND	ND	ND	ND	ND	ND	ND	-	-	-	-	Northern Lakes	
	08/19/96	ND	ND	ND	ND	ND	-	ND	ND	ND	ND	ND	ND	ND	-	-	-	-	Northern Lakes	
	06/05/97	-	-	ND	ND	ND	-	ND	ND	ND	ND	ND	ND	ND	-	-	-	-	Northern Lakes	
	12/11/97	-	-	-	0.12	ND	-	ND	-	-	-	0.13	-	-	-	-	-	-	-	Northern Lakes
	11/23/98	-	-	-	0.8	<0.054	-	<0.12	-	-	-	8.0	-	-	-	-	72	<0.50	ECCS	
	05/27/99	-	-	-	0.41	0.84	<0.12	0.12	-	-	-	0.13	-	-	-	-	<1.0	13	ECCS	
	11/30/99	-	-	-	0.10	<0.054	-	<0.094	-	-	-	0.20	-	-	-	-	<1.0	7.9	ECCS	
	05/25/00	-	-	-	0.08	<0.054	-	<0.094	-	-	-	0.08	-	-	-	-	<1.0	9.5	ECCS	
	04/05/01	0.024	0.055	0.055	0.134	0.34	<0.030	<0.019	<0.0061	<0.019	<0.0068	0.016	<0.012	<0.011	<0.021	<0.25	<1.0	6.9	ECCS	
	11/06/01	<0.048	<0.099	<0.12	<0.27	<0.23	<0.47	<0.43	<0.28	<0.11	<0.10	<0.18	<0.26	<0.096	<0.10	<0.12	0.36	9.3	ECCS	
04/15/02	<0.064	0.093	<0.025	0.093	<0.025	<0.028	<0.015	<0.038	<0.13	<0.13	<0.020	<0.017	<0.067	<0.071	<0.059	<1.0	<1.0	ECCS		
10/20/03	0.15	0.21	1.2	1.56	<0.029	0.16	0.12	<0.020	<0.033	<0.033	2	<0.0096	0.35	<0.039	<0.03	20	3.8	ECCS		

Table 2 Groundwater Sample Laboratory Results, Kettle Lakes Cooperative, Agricultural Chemical Release, Random Lake, Wisconsin

Sample Point	Sample Date	Detected Herbicide (micrograms per liter)															Detected Herbicides (milligrams per liter)		Laboratory
		Desisopropyl-atrazine	Desethyl-atrazine	Atrazine	Total Chlorinated Atrazine**	Alachlor	Acetochlor	Metolachlor	Simazine	Prometon	Propazine	Cyanazine	Pendi-methalin	Eptam	Butylate	Trifluralin	Nitrate + Nitrite	Ammonia	
	02/02/04	0.12	0.18	1.0	1.28	<0.024	<0.023	<0.024	0.03	<0.012	<0.044	<0.0048	<0.011	0.31	0.068	<0.022	<5.0	<5.0	ECCS
B19	04/15/02	0.64	1.6	5.6	7.84	18	160	150	0.28	0.34**	0.38**	<11	<0.018	1.7	0.73	<0.062	4.5	2.7	ECCS
B20	04/15/02	<0.067	0.46	0.80	1.26	1.1	1.2	0.76	<0.04	<0.13	<0.13	0.34	<0.018	<0.070	<0.074	<0.062	5.5	7.8	ECCS
B21	04/15/02	<0.069	0.15	0.11	0.26	<0.027	0.40	0.34	<0.041	0.44	<0.14	<0.22	<0.019	<0.072	<0.076	<0.064	<1.0	1.2	ECCS
B22	04/15/02	0.35	0.72	1.1	2.17	9.0	0.1	9.0	<0.040	0.27**	0.27**	2.3	<0.018	<0.070	0.51	<0.064	19	<1.0	ECCS
Field Blank	08/19/96	ND	ND	ND	ND	2.9	-	0.34	ND	ND	ND	ND	ND	ND	-	-	-	-	Northern Lakes
Trip Blank	08/15/94	ND	ND	<1.59	<1.59	<2.11	-	<2.01	-	-	-	<4.22	<1.97	<1.29	<2.08	<2.38	-	-	B.E.S.T
NR 140, Wis. Adm. Code PAL		NR	NR	NR	0.3	0.2	NR	1.5	0.4	18	NR	0.1	NR	50	6.7	0.75	2	NR	
NR 140, Wis. Adm. Code ES		NR	NR	NR	3	2	NR	15	4	90	NR	1	NR	250	67	7.5	10	NR	

NOTE:

- <x = compound not detected to a detection limit of x
- = not analyzed
- ** = total chlorinated atrazine concentration includes parent compound, desisopropylatrazine, and desethylatrazine.
- NR = not regulated
- B.E.S.T = Bay Environmental Services and Testing
- ECCS = Environmental Chemistry Consulting Services, Incorporated
- XXX = exceeds Chapter NR 140, Wisconsin Administrative Code (NR 140, Wis. Adm. Code) preventive action limit (PAL)
- XXX = exceeds NR 140, Wis. Adm. Code enforcement standards (ES)

Table 1 Ground-Water Elevation Data, Kettle Lakes Cooperative, Random Lake, Wisconsin

Well Number	Ground Surface Elevation	Reference Point* Elevation	Date	Depth to Water Below Reference Point*	Water Table Elevation	
MW100	876.98	876.57	06/04/91	10.29	866.28	
			06/05/91	10.32	866.25	
			06/17/91	10.12	866.45	
			09/26/91	10.72	865.85	
			11/19/91	10.42	866.15	
			12/27/91	10.19	866.38	
			12/09/93	7.91	868.66	
			02/11/94	8.60	867.97	
			05/24/94	7.71	868.86	
			07/26/94	7.91	868.66	
			08/15/94	7.80	868.77	
			10/25/94	8.24	868.33	
			11/16/95	7.32	869.25	
			12/05/95	8.06	868.51	
			10/04/96	7.80	868.77	
			06/05/97	7.60	868.97	
			12/11/97	8.47	868.10	
			11/23/98	8.50	868.07	
			05/26/99	7.09	869.48	
			11/30/99	8.67	867.90	
05/23/00	7.64	868.93				
MW1000	874.90	874.43	11/19/91	5.33	869.10	
			11/27/91	5.12	869.31	
			12/27/91	6.25	868.18	
			12/09/93	5.81	868.62	
			02/11/94	6.42	868.01	
			05/24/94	5.60	868.83	
			07/26/94	5.82	868.61	
			08/15/94	5.72	868.71	
			10/25/94	6.25	868.18	
			11/16/95	6.03	868.40	
			12/05/95	6.05	868.38	
			10/04/96	5.85	868.58	
			06/05/97	5.59	868.84	
			12/11/97	6.39	868.04	
			11/23/98	6.48	867.95	
			05/26/99	5.13	869.30	
			11/30/99	6.57	867.86	
	05/23/00	5.66	868.77			
	11/16/01	5.83	868.60			
	05/14/02	4.97	868.94			
	05/31/02	5.23	868.68			
	04/09/03	6.45	867.46			
	07/17/03	6.04	867.87			
	10/20/03	7.05	866.86			
	02/02/04	6.74	867.17			
		847.20	873.91			

Table 1 Ground-Water Elevation Data, Kettle Lakes Cooperative, Random Lake, Wisconsin

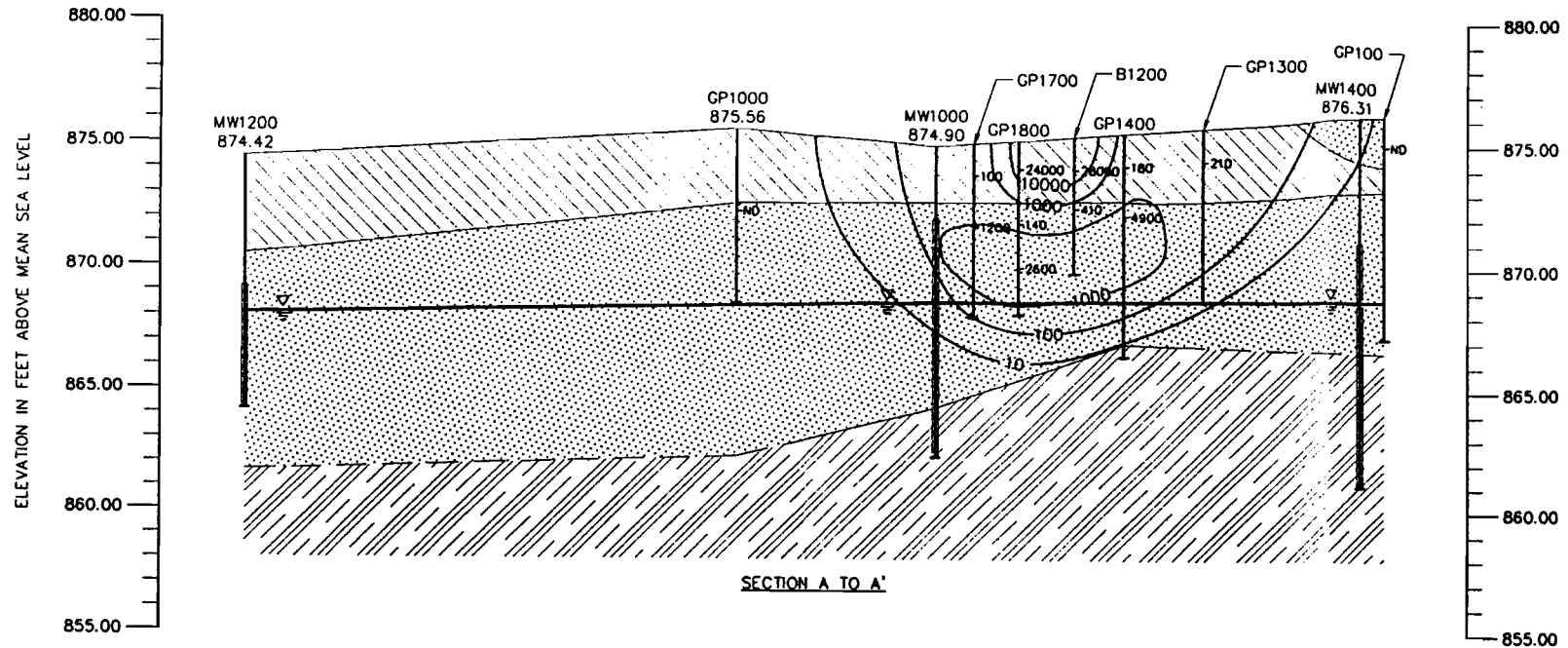
Well Number	Ground Surface Elevation	Reference Point* Elevation	Date	Depth to Water Below Reference Point*	Water Table Elevation
MWA1400	876.31	875.74	10/04/96	7.00	868.74
			06/05/97	6.83	868.91
			12/11/97	7.54	868.20
			11/23/98	7.67	868.07
			05/26/99	6.68	869.06
			11/30/99	7.93	867.81
			05/23/00	7.10	868.64
			11/06/01	7.39	868.35
			05/14/02	6.70	869.04
			05/31/02	6.90	868.84
			04/09/03	8.02	867.72
			07/17/03	7.66	868.08
			10/20/03	8.58	867.16
02/02/04	8.32	867.42			
MWA1500	875.56	875.20	10/04/96	6.66	868.54
			06/05/97	6.40	868.80
			12/11/97	7.25	867.95
			11/23/98	7.27	867.93
			05/26/99	6.00	869.20
			11/30/99	7.57	867.63
			05/23/00	6.51	868.69
			11/06/01	6.82	868.38
			05/14/02	6.02	869.18
			05/31/02	6.29	868.91
			04/09/03	7.49	867.71
			07/17/03	7.19	868.01
			10/20/03	8.07	867.13
02/02/04	7.81	867.39			
MWA1600	873.68	873.33	10/04/96	4.73	868.60
			06/05/97	4.61	868.72
			12/11/97	5.08	868.25
			11/23/98	5.22	868.11
			05/26/99	4.47	868.86
			11/30/99	5.46	867.87
			05/23/00	4.73	868.60
			11/06/01	4.94	868.39
			05/14/02	4.39	868.94
			04/09/03	6.03	867.30
			07/17/03	5.15	868.18
			10/20/03	6.14	867.19
			02/02/04	5.85	867.48

Note:

* = top of monitoring well casing
 Elevations referenced to mean sea level.

A
NORTHWEST

A'
SOUTHEAST



EXPLANATION

MW1200
874.42
|
MONITORING WELL LOCATION AND IDENTIFICATION WITH
GROUND SURFACE ELEVATION IN FEET AND WELL SCREEN

GP1000
|
ND
SOIL BOREHOLE LOCATION AND IDENTIFICATION WITH ALACHLOR
CONCENTRATION (BOLD) IN MICROGRAMS PER KILOGRAM
(ND = ALACHLOR NOT DETECTED ABOVE LABORATORY
REPORTING LIMITS)

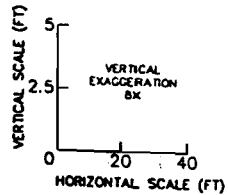
— 10 —
ISOCONCENTRATION LINE WITH ALACHLOR
CONCENTRATION IN MICROGRAMS PER KILOGRAM

— ▽ —
WATER TABLE

▨
FILL, TOPSOIL, CLAYEY SILT, AND SILTY CLAY

▤
SAND, GRAVEL, AND SILT

▧
SILTY CLAY



DRAWN BY: BCD	PROJECT: KLC131487	DATE: 12/31/96	KETTLE LAKES COOPERATIVE CENEX STATION RANDOM LAKE, WISCONSIN
REV. DATE 12/12/96	THIS DRAWING AND ALL INFORMATION CONTAINED THEREON IS THE PROPERTY OF NORTHERN ENVIRONMENTAL INCORPORATED AND SHALL NOT BE COPIED OR USED EXCEPT FOR THE PURPOSE FOR WHICH IT IS EXPRESSLY FURNISHED.		GEOLOGIC CROSS SECTION SHOWING VERTICAL EXTENT OF ALACHLOR-CONTAMINATED SOIL
 Northern Environmental Incorporated Hydrologists • Engineers • Geologists			

FIGURE 6

NOV-01-2002 01:15PM FROM-Kettle Lakes Co-op
NOV-01-2002 12:08 FROM-NORTHERN ENVIRONMENTAL

920 668 6154

T-143 P.002/005 F-207

288-241-8222

T-143 P.002/005 F-277

August 22, 2002

Mr. Christopher Hatfield
Northern Environmental Technologies, Incorporated
1214 West Venture Court
Mequon, Wisconsin 53092

RE: Signed Statement, Kettle Lakes Cooperative, 430 1st Street, Random Lake,
Wisconsin; WDATCP #94519052001, WDNR FID #460121640

Dear Mr. Hatfield:

The most recent deed and portion of the plat map for the above-referenced property are enclosed. I, Norbert Schleicher, am providing this signed statement that the legal descriptions and attachments to this statement are, to the best of my knowledge, complete and accurate.

Sincerely,

Norbert Schleicher

Norbert Schleicher
Kettle Lakes Cooperative

Enclosures

September 3, 2002

Mr. Christopher C. Hatfield
Northern Environmental Technologies, Incorporated
1214 West Venture Court
Mequon, Wisconsin 53092

RE: Signed Statement, 83 Bentert Street, Random Lake, Wisconsin

Dear Mr. Hatfield:

The most recent deed and portion of the plat map for the above-referenced property are enclosed. I ROBERT THIEL, am providing this signed statement that the legal descriptions and attachments to this statement are, to be best of my knowledge, complete and accurate.

Sincerely,

A handwritten signature in black ink, appearing to read "Robert Thiel", with a large, sweeping flourish extending to the right.

Badger Tag and Label Corporation

Enclosures

October 25, 2004
(KLC 01-1408-1487)

Mr. Thomas Ginski
Badger Tag & Label Corporation
83 Bentert Street
Random Lake, Wisconsin 53075

RE: Kettle Lakes Cooperative, 430 First Street, Random Lake, Wisconsin; DATCP #94519052001

Dear Mr. Ginski:

Groundwater contamination that originated on the Kettle Lakes Cooperative property at 430 First Street, Random Lake, Wisconsin has migrated onto a portion of your property at 83 Bentert Street, Random Lake, Wisconsin. The levels of alachlor, metalachlor, cyanazine, (herbicides) and nitrates (fertilizer) in groundwater on a portion of your property are above the state groundwater enforcement standards (ES) found in Chapter NR 140, Wisconsin Administrative Code (NR 140, Wis. Adm. Code). However, Northern Environmental Technologies, Incorporation (Northern Environmental) investigated this contamination and has determined that the groundwater contaminant plume is stable or receding and should naturally attenuate over time. Northern Environmental believes that allowing natural attenuation to complete the cleanup at the site will meet the requirements for case closure that are found in the NR 700 series, Wis. Adm. Code, and Northern Environmental has requested that the Wisconsin Department of Agriculture, Trade, and Consumer Protection (WDATCP) accept natural attenuation as the final remedy for this site and grant case closure. Closure means that the WDATCP will not be requiring any further investigation or cleanup action to be taken, other than the reliance on natural attenuation.

Since the source of the groundwater contamination is not on your property, neither you nor any subsequent owner of the property will be held responsible for investigation or cleanup of this groundwater contamination, as long as you and any subsequent owners comply with the requirements of section 292.13, Wisconsin Statutes (s. 292.13, Wis. Stats), including allowing access to your property for environmental investigation or cleanup if access is required. For further information on the requirements of s. 292.13, Wis. Stats., or to obtain a copy of the Wisconsin Department of Natural Resources (WDNR) publication #RR-589, Fact Sheet 10: Guidance for Dealing with Properties Affected by Off-Site Contamination, you may call (800) 367-6076 for calls originating in Wisconsin or (608) 264-6020 if you are calling from out of state or within the Madison area.

The WDATCP will not review this closure request for at least 30 days after the date of this letter. As an affected property owner, you have a right to contact the WDATCP to provide any technical information that you may have that indicates that closure should not be granted for this site. If you would like to submit any information to the WDATCP that is relevant to this closure request, you should call or mail:

Mr. Stanley Senger
Wisconsin Department of Agriculture, Trade, and Consumer Protection
2811 Agricultural Drive
Madison, Wisconsin 53718-6777
(608) 224-4515



If this case is closed, all properties within the site boundaries where groundwater contamination exceeds NR 140, Wis. Adm. Code ground-water ES will be listed on the WDNR's Geographic Information System (GIS) Registry of Closed Remedial Sites. The information on the GIS Registry includes maps showing the location of properties in Wisconsin where groundwater contamination above NR 140, Wis. Adm. Code ES was found at the time that the case was closed. This GIS Registry will be available to the general public on the WDNR's internet web site.

Should you or any subsequent property owner wish to construct or reconstruct a water supply well on your property, special well construction standards may be necessary to protect the well from the residual groundwater contamination. Any well driller who proposes to construct a well on your property in the future will first need to call the Diggers Hotline ([800] 242-8511) if your property is located outside of the service area of a municipally owned water system, or contact the Drinking Water program within the WDNR if your property is located within the designated service area of a municipally owned water system, to determine if there is a need for special well construction standards.

Once the WDATCP makes a decision on this closure request, it will be documented in a letter. If the WDATCP grants closure, you may obtain a copy of this letter by requesting a copy from Northern Environmental, by writing to the agency address given above or by accessing the WDNR GIS Registry of Closed Remediation Sites on the internet at www.dnr.state.wi.us/org/at/et/geo/gwur. A copy of the closure letter is included as part of the site file on the GIS Registry of Closed Remediation Sites.

If you need more information, you may contact me or Gary R. Henningsen at (262) 241-3133.

Sincerely
**Northern Environmental
Technologies, Incorporated**

Christopher C. Hatfield
Hydrogeologist

CCH/lmh
Enclosures

c: Norbert Schleicher, Kettle Lakes Cooperative
Stanley Senger, WDATCP (w/o enclosures)

October 25, 2004
(KLC 01-1408-1487)

Village of Random Lake
Department of Public Works
96 Russell Drive
Random Lake, Wisconsin 53075

RE: Groundwater Contamination, Kettle Lakes Cooperative, 430 1st Street, Random Lake, Wisconsin

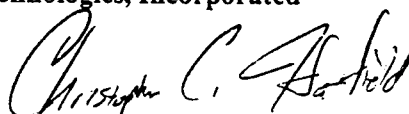
To Whom It May Concern:

Kettle Lakes Cooperative is the responsible party for agricultural chemical and petroleum contamination at 430 1st Street, Random Lake, Wisconsin (the Site). Northern Environmental Technologies, Incorporated (Northern Environmental) was retained to provide consulting services to investigate the petroleum release and obtain closure. Northern Environmental completed the site investigation and monitored groundwater quality at the Site, and is now asking the Wisconsin Department of Agriculture, Trade, and Consumer Protection (WDATCP) and the Wisconsin Department of Natural Resources (WDNR) to close the Site.

As a condition for closure, the WDATCP and WDNR will require that the Village of Random Lake be notified of potential off-site agricultural chemical and/or petroleum contamination. Based on the investigation results, it appears that agricultural chemical and petroleum contamination may be present in groundwater in the Bentert Street right-of-way. Petroleum contamination may also be present west of the Site beneath 1st Street. A figure showing the estimated extent of contamination is enclosed.

We trust this information meets your needs. Please contact us if you have any questions or comments.

Sincerely,
**Northern Environmental
Technologies, Incorporated**



Christopher C. Hatfield
Hydrogeologist

CCH lmh
Enclosure

c: Mr. Norbert Schleicher