



October 1, 2019

Carrie Stoltz
Department of Natural Resources
Rhineland Regional Office
107 Sutliff Avenue
Rhineland, WI 54501

Re: Village of Luck Main Street Reconstruction Status

Dear Carrie:

In response to your email request, no environmental sampling was conducted during reconstruction of Main Street in Luck. No soil was removed from the project area, and all soils were used to backfill the areas that they came out of. The site work on the project is completed.

The MSA construction observer, Lori Raven, indicated that the contractor did not encounter anything that appeared contaminated. No obvious odors or staining were observed. The contractor accelerated the project schedule and completed much of the work before our environmental staff was scheduled to be onsite to screen the soils.

Attached is a copy of the record drawings for the project.

Please contact MSA with any questions.

Sincerely,

MSA Professional Services, Inc.

A handwritten signature in black ink that reads "Jayne A. Englebert". The signature is written in a cursive, flowing style.

Jayne Englebert, P.G.
Senior Hydrogeologist

Cc: Teresa Anderson, MSA Team Leader

Att: Village of Luck – Main Street Record Drawings 2019

1230 South Boulevard
Baraboo, WI 53913

P (608) 356-2771
TF (800) 362-4505
F (608) 356-2770

www.msa-ps.com

MAIN STREET IMPROVEMENTS

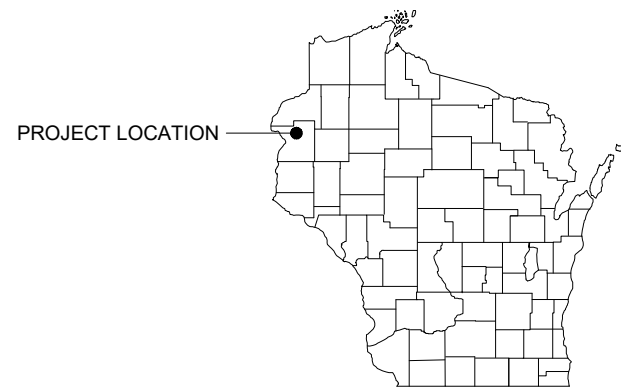
VILLAGE OF LUCK POLK COUNTY, WISCONSIN

RECORD DRAWINGS

REVISED TO CONFORM TO
CONSTRUCTION RECORDS
PROVIDED BY ENGINEER



*RECORD DRAWING
The Engineer will not be responsible for any errors or omissions
incorporated into this document as a result of information
compiled and furnished by others.*



SHEET INDEX

G - GENERAL PLANS

- G 1 TITLE SHEET
- G 2 OVERALL PLAN
- G 3 TYPICAL ROADWAY SECTIONS
- G 4 EROSION CONTROL DETAILS
- G 5-7 ROADWAY DETAILS
- G 8 WATER DETAILS
- G 9 STORM DETAILS
- G 10-11 MISCELLANEOUS DETAILS
- G 12 TRAFFIC CONTROL PLAN
- G 13 TRAFFIC CONTROL FOR LANE CLOSURE
- G 14 INTERSECTION DETAILS

ST - SITE PLANS

- ST 1-2 DEMOLITION AND REMOVALS PLANS
- ST 3-4 EROSION CONTROL PLANS
- ST 5-6 PAVEMENT MARKING PLANS
- SF 1 SITE FURNISHING

SL - STREET LIGHTING PLANS

- SL 1 STREET LIGHTING DEMOLITION PLAN
- SL 2 STREET LIGHTING PLAN
- SL 3-6 STREET LIGHTING DETAILS

R - ROAD CONSTRUCTION AND UTILITY PLANS

- R 1-3 PLAN & PROFILE - MAIN STREET
- R 4 PLAN & PROFILE - THIRD AVENUE
- R 5 PLAN & PROFILE - SECOND AVENUE

CS - CROSS SECTION SHEETS

- CS 1-10 CROSS SECTIONS - MAIN STREET
- CS 11-12 CROSS SECTIONS - THIRD AVENUE
- CS 13-14 CROSS SECTIONS - SECOND AVENUE

LEGEND

- W — EXISTING WATER MAIN
- +—+— EXISTING WATER MAIN, VALVE & HYDRANT
- EXISTING WATER SERVICE & CURB STOP
- +—+— PROPOSED WATER MAIN, VALVE, & HYDRANT
- PROPOSED WATER SERVICE & CURB STOP
- SAN—○— EXISTING SANITARY SEWER & MANHOLE
- PROPOSED SANITARY SEWER & MANHOLE
- FM— EXISTING FORCEMAIN
- SS— EXISTING STORM SEWER & INLET
- +—+— PROPOSED STORM SEWER & INLET
- PROPOSED STORM SEWER & MANHOLE
- E— BURIED ELECTRIC
- G— BURIED GAS & VALVE
- TV— BURIED CABLE TELEVISION
- T— BURIED TELEPHONE
- FO— BURIED FIBER OPTICS
- OH— OVERHEAD UTILITY
- +—+— RAILROAD TRACKS
- +—+— EXISTING CURB & GUTTER
- +—+— PROPOSED CURB & GUTTER
- +—+— EXISTING SIDEWALK
- +—+— PROPOSED SIDEWALK
- CP— EXISTING CULVERT PIPE
- +—+— PROPOSED CULVERT PIPE
- *—*— FENCE LINE
- +—+— DRAINAGE ARROW
- +—+— SILT FENCE
- +—+— RIGHT-OF-WAY
- +—+— BASELINE
- +—+— PROPERTY LINE
- +—+— TREE LINE
- BENCHMARK
- IRON PIPE
- IRON ROD
- ▲ CONTROL POINT
- UTILITY POLE & GUY
- SOIL BORING
- LIGHT POLE
- PEDESTAL
- STREET SIGN
- MAILBOX
- FLAGPOLE
- ☆ TREE - DECIDUOUS
- ☆ TREE - CONIFEROUS
- ✗ TREE TO BE REMOVED

UTILITIES

GAS:

WE ENERGIES
LEWIS KNAPP, LEAD DESIGNER
WORK: 715-234-9604
CELL: 715-416-4269
EMAIL: lknapp@kapurinc.com

ELECTRIC:

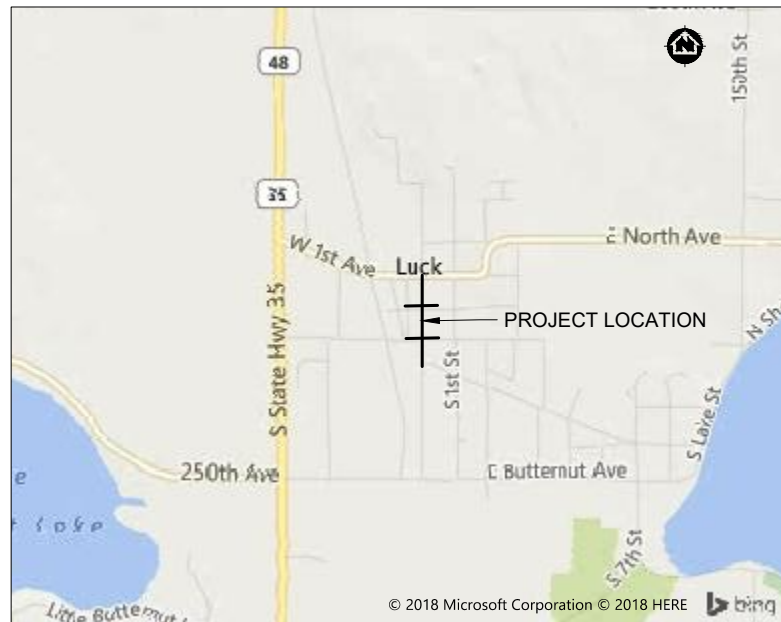
XCEL ENERGY, INC.
ASHLEY CHAPMAN
801 KELLER AVENUE SOUTH
AMERY, WI 54001
CELL: 715-268-3218
EMAIL: ashley.d.chapman@excelenergy.com

TELEPHONE - CATV - INTERNET (FIBER OPTICS):

LAKELAND COMMUNICATIONS
TODD ROEHM, PLANT MANAGER
825 INNOVATION AVENUE
MILLTOWN, WI 54858
WORK: 715-825-2171, Ext. 109

SEWER & WATER:

VILLAGE OF LUCK
SETH PETERSON DPW
401 S MAIN STREET
LUCK, WI 54853
MOBILE: 715-491-3424



LOCATION MAP
NOT TO SCALE



STREETS & UTILITIES



STREET LIGHTING
SHEETS SL 1 THRU SL 6

DIGGERS HOTLINE
Dial 811 or (800) 242-8511
www.DiggersHotline.com

NOTE:
UTILITY LOCATIONS SHOWN ON PLANS ARE APPROXIMATE AND CONTRACTOR
SHALL HAVE APPROPRIATE UTILITY MARK EXACT LOCATIONS PRIOR TO
CONSTRUCTION.

PROJECT NO.	SCALE	AS SHOWN	NO.	DATE	REVISION	BY
00524035	AS SHOWN					
PROJECT DATE:	5/04/2018	DRAWN BY:	JAS	1	0/27/18	JAS
F.B.:		CHECKED BY:	TKA			
PLOT DATE: 7/15/19, P:\5204\524\00524035\CADD\Record Drawings\Drew's Workspace\00524035 Title Sheet Record Drawings.dwg						



ARCHITECTURE | ENGINEERING | ENVIRONMENTAL
FUNDING | PLANNING | SURVEYING
11 E Marshall St Rice Lake, WI 54868
(715) 234-1009 (888) 869-1215
www.msa-ps.com
© MSA Professional Services, Inc.

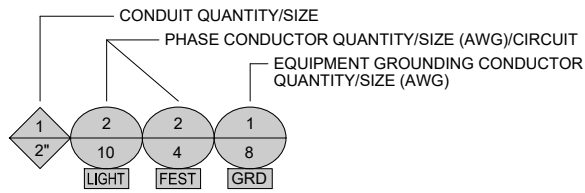
MAIN STREET IMPROVEMENTS
VILLAGE OF LUCK
POLK COUNTY, WISCONSIN

G1 TITLE SHEET

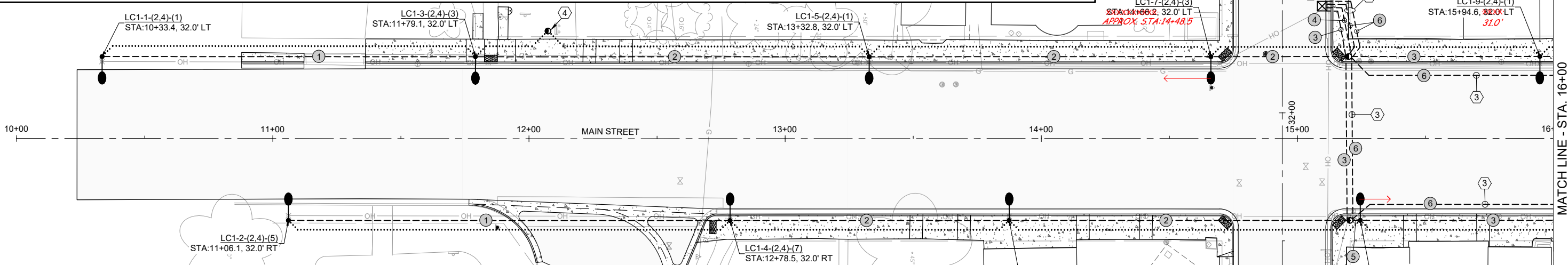
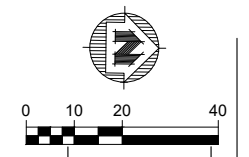
FILE NO.
00524035
SHEET
G1

LEGEND

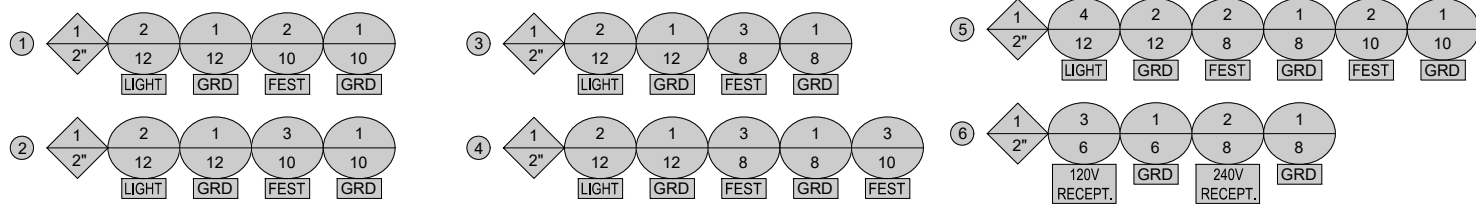
- LIGHT POLE ASSEMBLY (REF. PLANS AND SPECIFICATIONS)
- ☒ LIGHTING CONTROL CABINET AND ELECTRICAL SERVICE METER POLE MOUNTED 7'-6" TO BOTTOM
- CONDUIT RIGID NONMETALLIC SCHEDULE 40 2-INCH UNLESS OTHERWISE NOTED (SCHEDULE 80 BELOW ROADWAY) (RGS ABOVE GRADE)
- CONDUIT RIGID NONMETALLIC SCHEDULE 40 1-INCH UNLESS OTHERWISE NOTED (FOR FUTURE SOUND BY OTHERS)
- PULL BOXES STEEL 24X42-INCH



- LIGHTING CONTROL CABINET DESIGNATION
- POLE NUMBER
- LIGHTING CIRCUIT(S)
- FESTOON RECEPTACLE (ALTERNATING CIRCUITS SHARING A NEUTRAL)
- X-X-(X,X)-(X)
STA. XXX+XX.X, XX.X' RT/LT - LOCATION (TO CENTER OF POLE)
- X-X(T)-XX
LUMINAIRE ARM LENGTH (FEET)
- POLE TYPE ('T' INCLUDES TRANSFORMER BASE)
- LUMINAIRE DESIGNATION (LED TYPE)



WIRING LEGEND



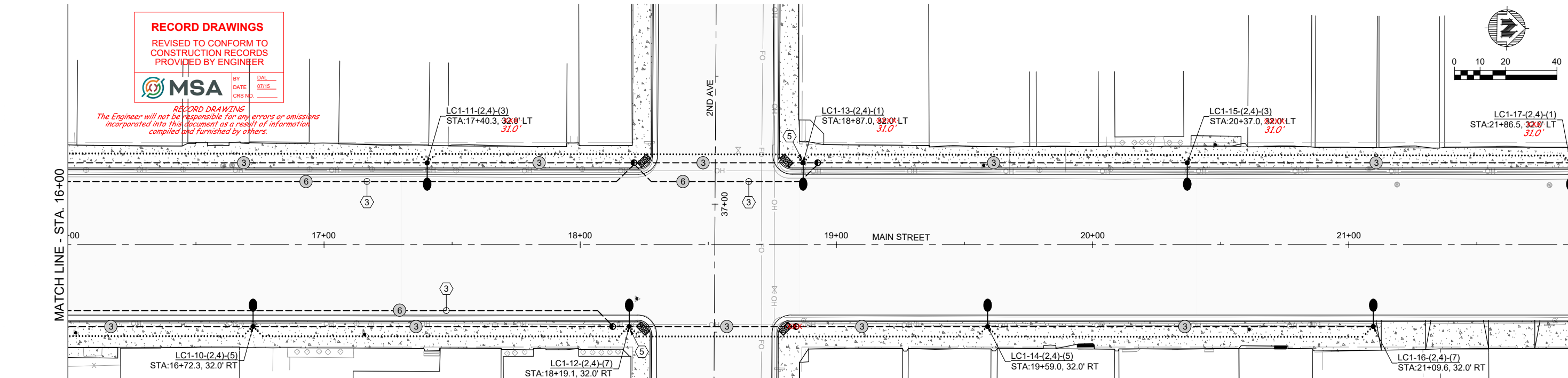
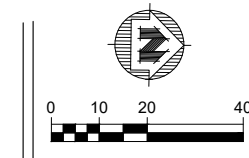
RECORD DRAWINGS

REVISED TO CONFORM TO CONSTRUCTION RECORDS PROVIDED BY ENGINEER



BY DATE
DAL 07/15
CRS NO.

RECORD DRAWING
The Engineer will not be responsible for any errors or omissions incorporated into this document as a result of information compiled and furnished by others.



STREET LIGHTING KEY NOTES:

1. PROVIDE A NEW 200 AMP, 120/240 VOLT, SINGLE PHASE METERED ELECTRICAL SERVICE ON THIS UTILITY POLE TO SERVE NEW POLE MOUNTED LIGHTING CONTROL CABINET ASSEMBLY. PROVIDE A NEW POLE MOUNTED METER SOCKET PER UTILITY COMPANY REQUIREMENTS. PROVIDE SERVICE CONDUIT MAST WITH WEATHER-HEAD AND CONDUCTORS PER UTILITY COMPANY REQUIREMENTS. PROVIDE A STAINLESS STEEL NEMA 4X HINGED, GASKETED AND LOCKABLE CABINET ASSEMBLY WITH ALL INTERNAL ELECTRICAL EQUIPMENT (PER SPECIFICATIONS) TO SERVE THE PROJECT'S POWER, LIGHTING AND CONTROLS REQUIREMENTS. LOWEST MOUNTED POINT OF ANY EQUIPMENT SHALL NOT EXTEND BELOW 7'-6" ABOVE FINISHED GRADE.
2. PROVIDE (2) SEPARATE 2" RIGID GALVANIZED STEEL PVC CONDUITS (CONVERTED TO NON-METALLIC SCHEDULE 40 UNDERGROUND) BETWEEN LIGHTING CONTROLS CABINET AND IN-GROUND PULL BOX. REFERENCE NOTE 5 FOR CIRCUITING INDEPENDENT OF THE LIGHTING AND FESTOON RECEPTACLES.
3. PROVIDE (1) SEPARATE 2" NON-METALLIC PVC CONDUIT (SCHEDULED PER LEGEND'S LOCATION). REFERENCE NOTE 5 FOR CIRCUITING INDEPENDENT OF THE LIGHTING AND FESTOON RECEPTACLES.
4. PROVIDE (2) 1" NON-METALLIC PVC EMPTY CONDUITS UNDERGROUND BETWEEN 18"-30" ROUTED BETWEEN THIS PULL BOX AND THE NORTH SIDE OF THE MUNICIPAL BUILDING TOWARDS THE BACK GARAGE AREA'S NORTH WALL. COORDINATE WITH OWNER TO BRING CONDUITS INTO THE BUILDING NEAR THE BACK AT A LOCATION ON THE NORTH WALL AGREED TO BY THE OWNER. EXPOSED CONDUIT ABOVE GRADE SHALL BE NON-METALLIC SCHEDULE 80 PVC. PROVIDE BUILDING PENETRATION AND FIRE SEAL FOR BOTH CONDUITS AND TERMINATE WITH BUSHINGS JUST INSIDE EXPOSED WALL WHERE OWNER CAN GAIN ACCESS FOR FUTURE SOUND SYSTEM USE. PENETRATION SHALL BE 10' ABOVE FINISHED GRADE UNLESS OTHERWISE ADVISED BY THE OWNER.
5. PROVIDE THE FOLLOWING: AT APPROXIMATELY 10' A.F.G., PROVIDE 3 SEPARATE SINGLE GANG INTEGRALLY MOUNTED BOXES FACING SIDEWALK SIDE (MOUNTED VERTICAL OF EACH OTHER). (2) BOXES SHALL EACH CONTAIN ONE DUPLEX GFCI RECEPTACLE WITH HEAVY DUTY METAL "WHILE-IN-USE" COVERS FED WITH 2 SEPARATE CIRCUITS (6 AND 8 EAST SIDE; 9 AND 11 WEST SIDE). PROVIDE A 240 VOLT SIMPLEX SINGLE TWIST LOCK RECEPTACLE WITH HEAVY DUTY METAL "WHILE-IN-USE" COVER FED WITH CIRCUITS (10 AND 12 EAST SIDE; 13, AND 15 WEST SIDE).

PROJECT NO.:	00524035	SCALE:	AS SHOWN	NO.	DATE	REVISION	BY
PROJECT DATE:	5/04/2018	DRAWN BY:	JAS				
F.B.:		CHECKED BY:	MTP				
PLOT DATE: 7/15/19, P:\520\52400524035\CADD\Record Drawings\Drew's Workspace\00524035 Lighting Plans Record Drawings.dwg							

MSA ARCHITECTURE | ENGINEERING | ENVIRONMENTAL FUNDING | PLANNING | SURVEYING
11 E Marshall St Rice Lake, WI 54868
(715) 234-1009 (888) 869-1215
www.msa-ps.com
© MSA Professional Services, Inc.

MAIN STREET IMPROVEMENTS
VILLAGE OF LUCK
POLK COUNTY, WISCONSIN

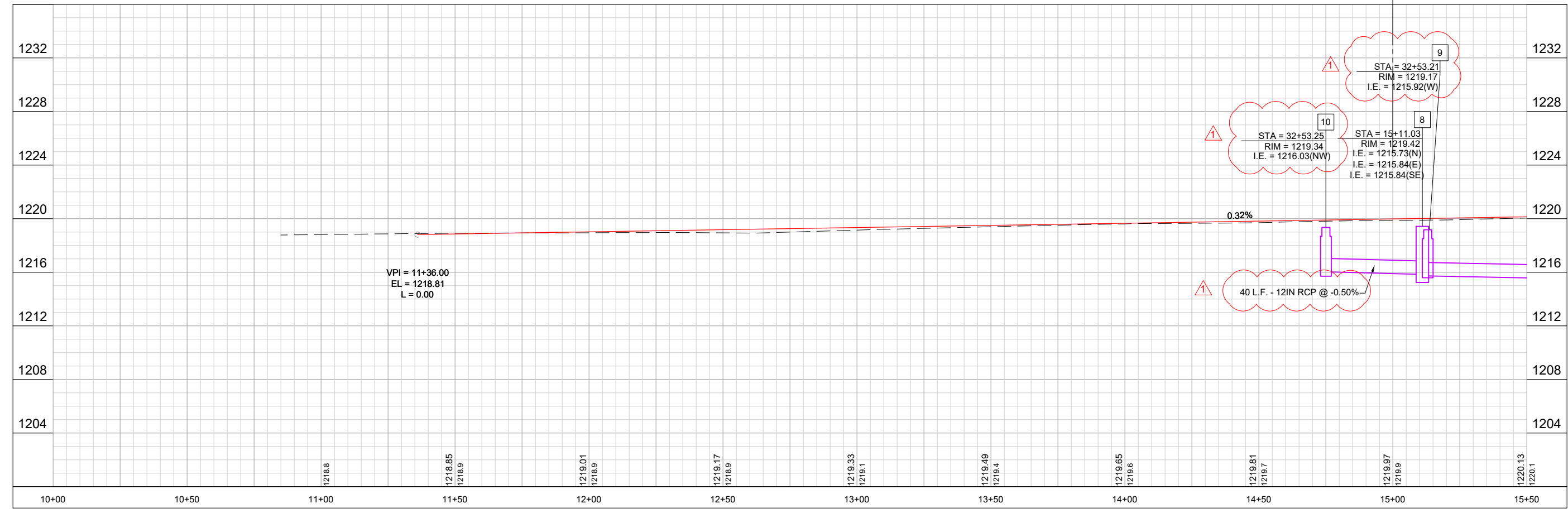
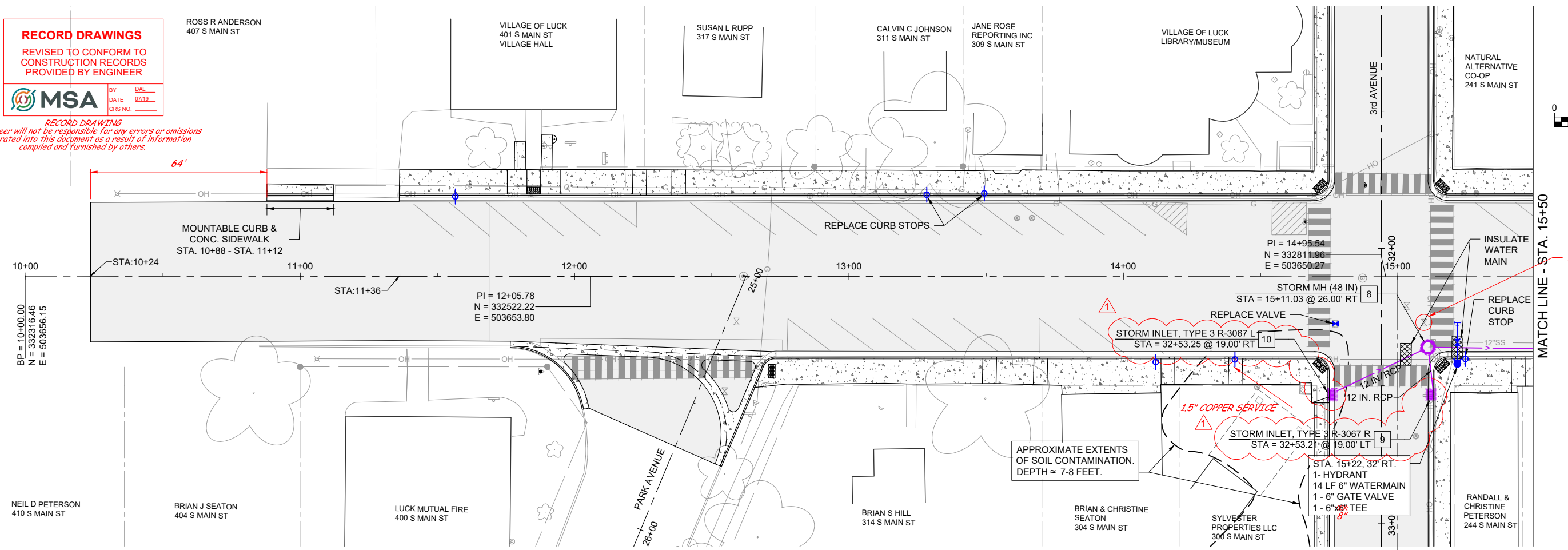
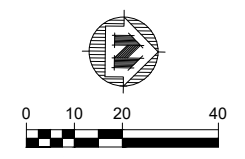
SL2 STREET LIGHTING PLAN

FILE NO. 00524035
SHEET SL2

RECORD DRAWINGS
 REVISED TO CONFORM TO
 CONSTRUCTION RECORDS
 PROVIDED BY ENGINEER

MSA
 BY: DAL
 DATE: 07/19
 CRS NO.:

RECORD DRAWING
 The Engineer will not be responsible for any errors or omissions
 incorporated into this document as a result of information
 compiled and furnished by others.



PROJECT NO.:	00524035	SCALE:	AS SHOWN	NO.:	1	DATE:	0/27/18	REVISION:	STORM INLETS RELOCATED	BY:	JAS
PROJECT DATE:	5/04/2018	DRAWN BY:	JAS	CHECKED BY:	TKA						
F.B.:											
PLOT DATE: 7/15/19, P:\520\52400524035\CADD\Record Drawings\Drew's Workspace\00524035 Plan Profile Main Street Record Drawings.dwg											

MSA
 ARCHITECTURE | ENGINEERING | ENVIRONMENTAL
 FUNDING | PLANNING | SURVEYING
 11 E Marshall St Rice Lake, WI 54868
 (715) 234-1009 (888) 869-1215
 www.msa-ps.com
 © MSA Professional Services, Inc.

MAIN STREET IMPROVEMENTS
 VILLAGE OF LUCK
 POLK COUNTY, WISCONSIN

R1 PLAN & PROFILE - MAIN STREET

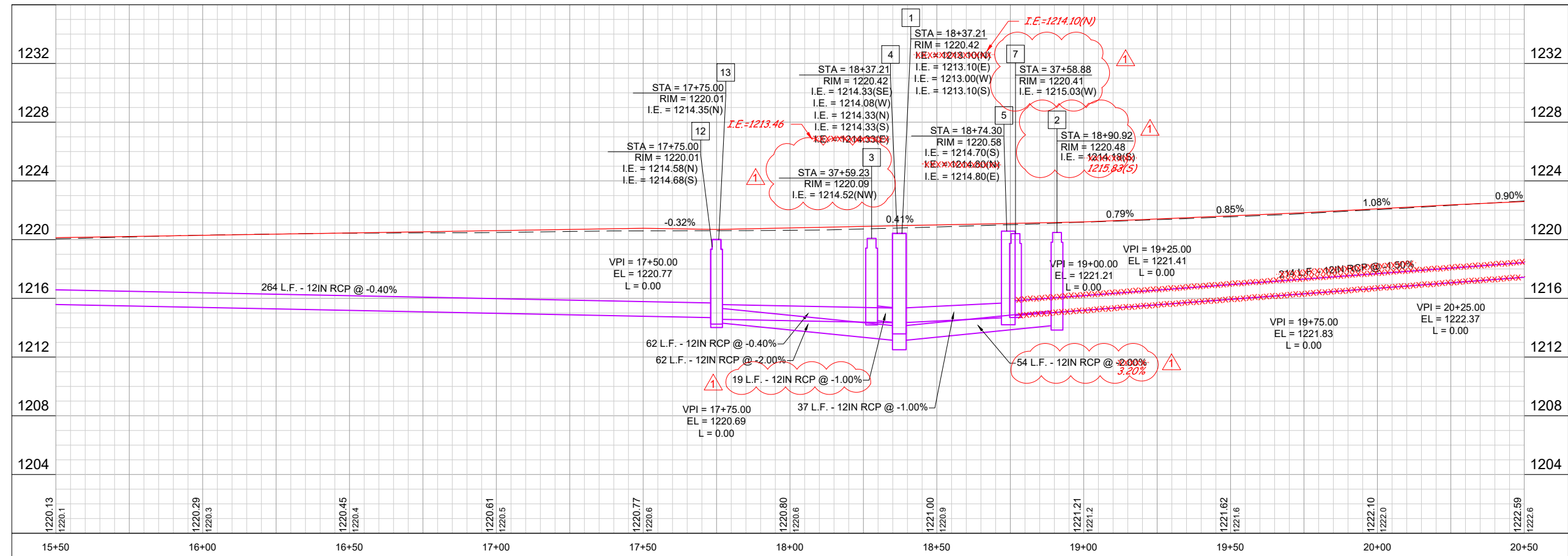
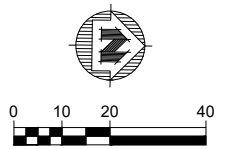
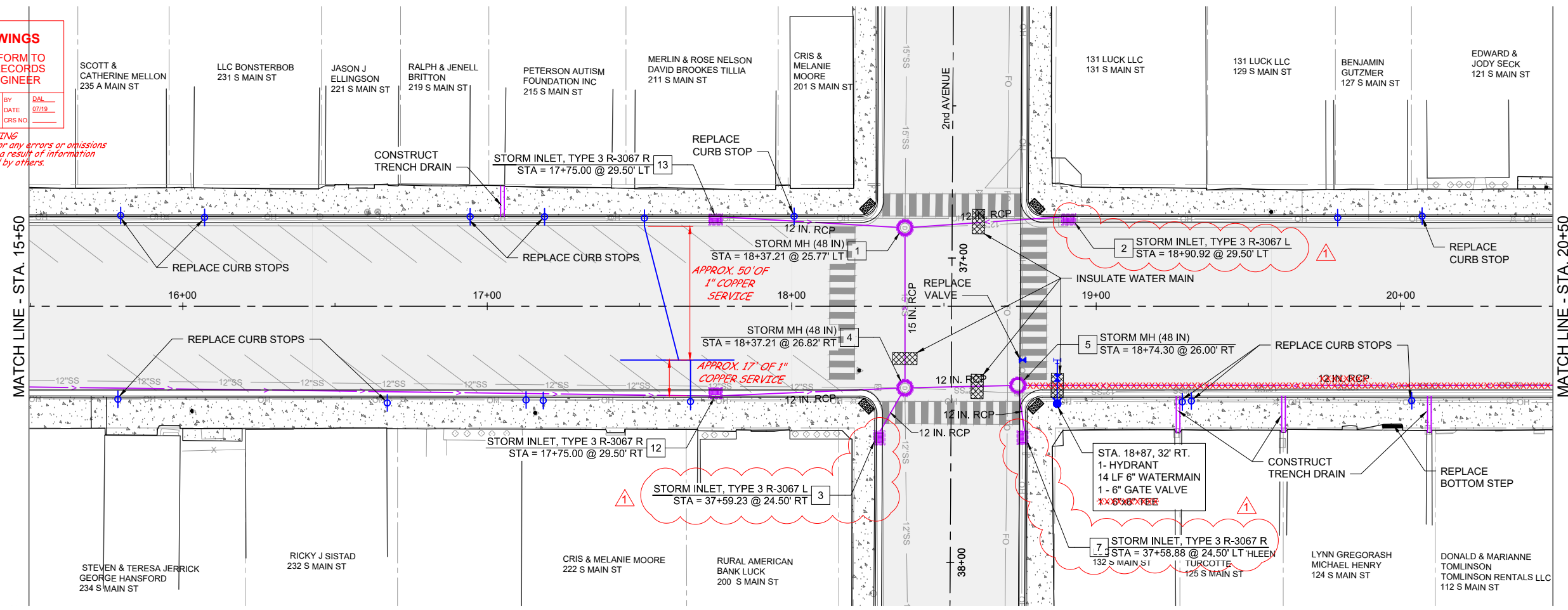
FILE NO.
 00524035
 SHEET
 R1

RECORD DRAWINGS

REVISED TO CONFORM TO CONSTRUCTION RECORDS PROVIDED BY ENGINEER



RECORD DRAWING
The Engineer will not be responsible for any errors or omissions incorporated into this document as a result of information compiled and furnished by others.



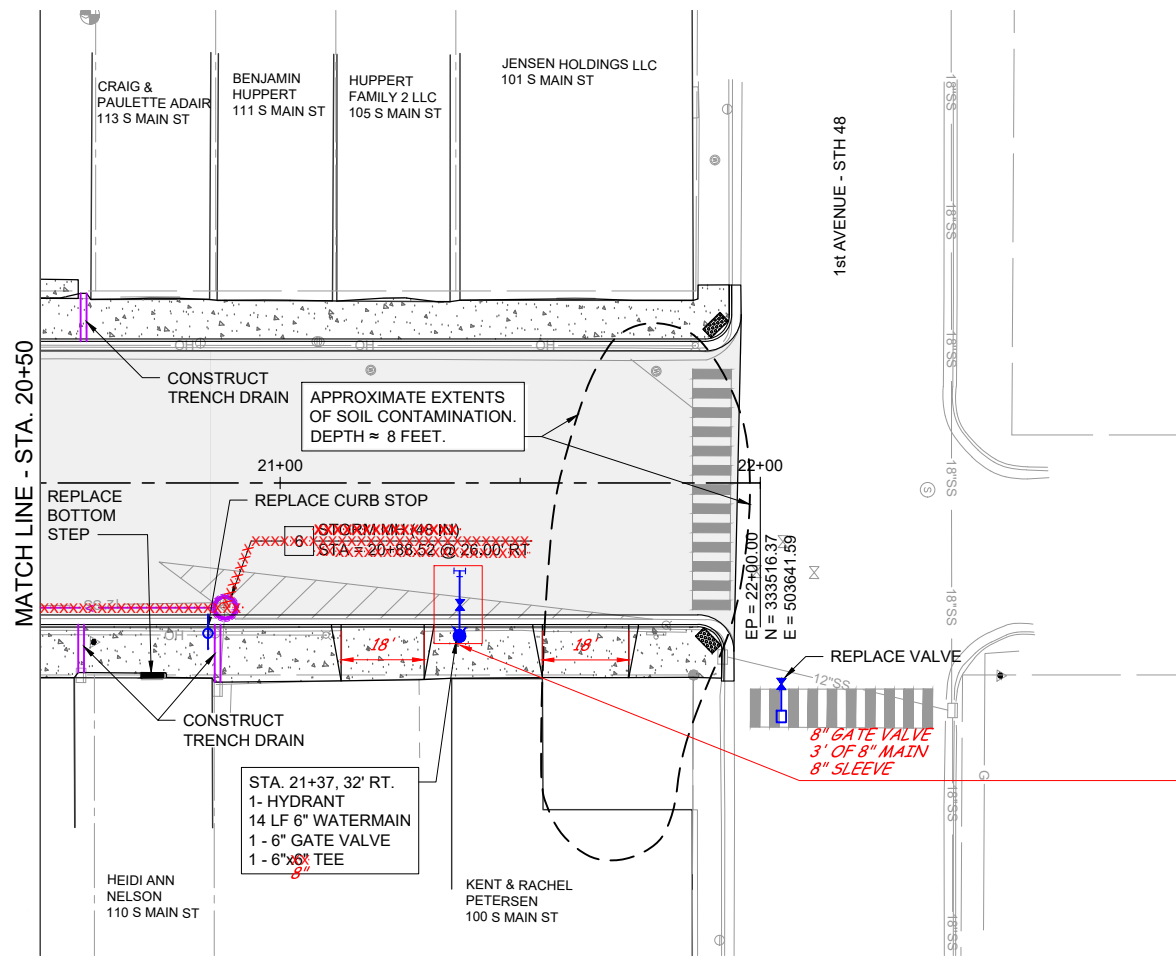
PROJECT NO.:	00524035	SCALE:	AS SHOWN	NO.:	1	DATE:	0/27/18	REVISION:	STORM INLETS RELOCATED	BY:	JAS
PROJECT DATE:	5/04/2018	DRAWN BY:	JAS	CHECKED BY:	TKA						
F.B.:											

MSA
ARCHITECTURE | ENGINEERING | ENVIRONMENTAL
FUNDING | PLANNING | SURVEYING
11 E Marshall St Rice Lake, WI 54868
(715) 234-1009 (888) 869-1215
www.msa-ps.com
© MSA Professional Services, Inc.

MAIN STREET IMPROVEMENTS
VILLAGE OF LUCK
POLK COUNTY, WISCONSIN

R2 PLAN & PROFILE - MAIN STREET

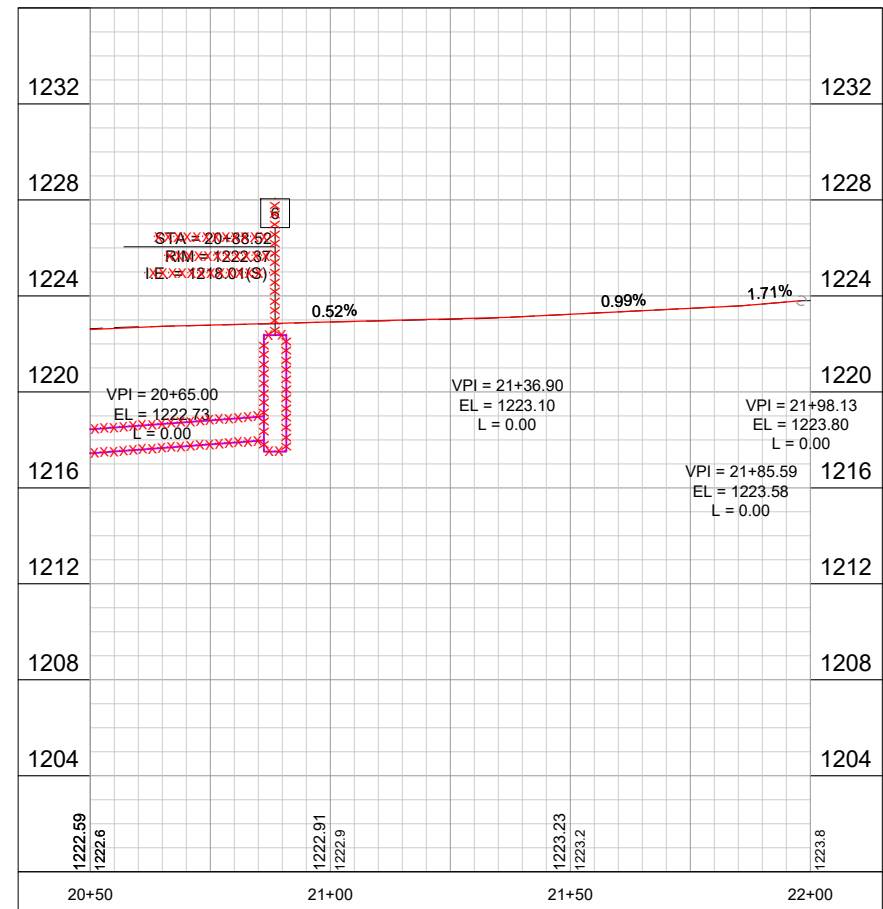
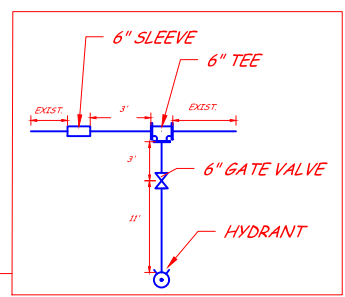
FILE NO.:	00524035
SHEET	R2



RECORD DRAWINGS
 REVISED TO CONFORM TO
 CONSTRUCTION RECORDS
 PROVIDED BY ENGINEER

MSA BY: DAL
 DATE: 07/19
 CRS NO.:

*RECORD DRAWING
 The Engineer will not be responsible for any errors or omissions
 incorporated into this document as a result of information
 compiled and furnished by others.*



PROJECT NO.:	00524035	SCALE:	AS SHOWN	NO.:	1	DATE:	07/19	REVISION:	STORM INLETS RELOCATED	BY:	JAS
PROJECT DATE:	5/04/2018	DRAWN BY:	JAS	CHECKED BY:	TKA						
PLOT DATE: 7/15/19, P:\520\524\00524035\CADD\Record Drawings\Drew's Workspace\00524035 Plan Profile Main Street Record Drawings.dwg											

MSA ARCHITECTURE | ENGINEERING | ENVIRONMENTAL
 FUNDING | PLANNING | SURVEYING
 11 E Marshall St Rice Lake, WI 54868
 (715) 234-1009 (888) 869-1215
 www.msa-ps.com
 © MSA Professional Services, Inc.

MAIN STREET IMPROVEMENTS
 VILLAGE OF LUCK
 POLK COUNTY, WISCONSIN

R3 PLAN & PROFILE - MAIN STREET

FILE NO.
00524035
 SHEET
R3

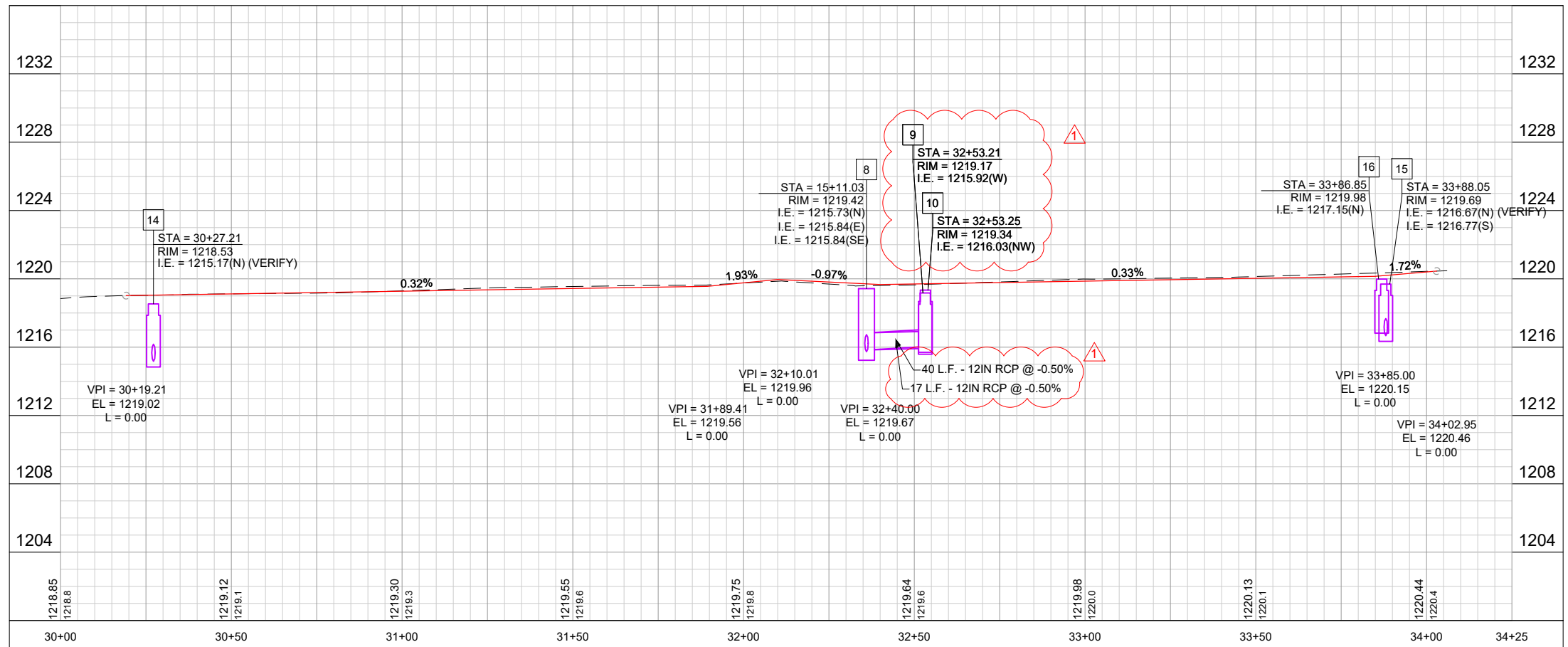
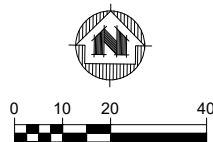
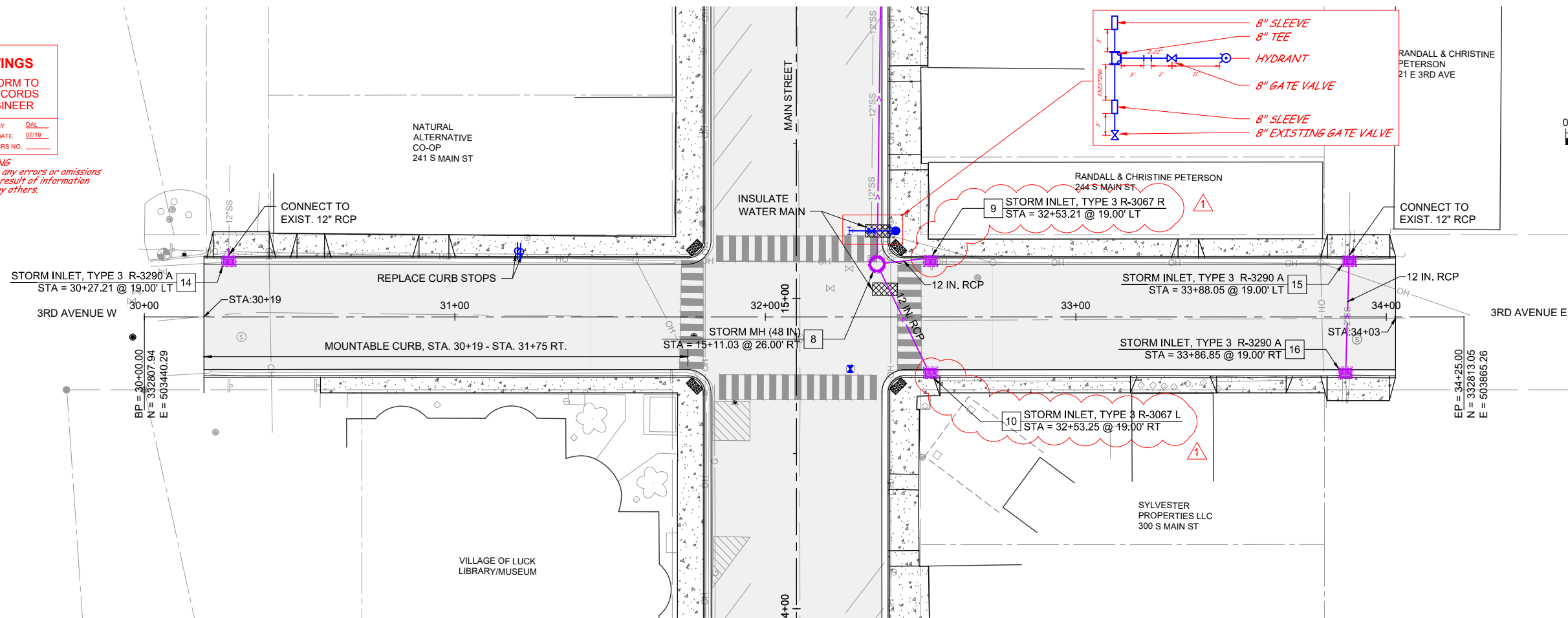
RECORD DRAWINGS

REVISED TO CONFORM TO
CONSTRUCTION RECORDS
PROVIDED BY ENGINEER



BY: DATE: 07/19
CRS NO.

*RECORD DRAWING
The Engineer will not be responsible for any errors or omissions
incorporated into this document as a result of information
compiled and furnished by others.*



PROJECT NO.:	00524035	SCALE:	AS SHOWN	NO.:		DATE:		REVISION:		BY:	
PROJECT DATE:	5/04/2018	DRAWN BY:	JAS	1		0/27/18		STORM INLETS RELOCATED		JAS	
F.B.:		CHECKED BY:	TKA								

MSA ARCHITECTURE | ENGINEERING | ENVIRONMENTAL
FUNDING | PLANNING | SURVEYING
11 E Marshall St Rice Lake, WI 54868
(715) 234-1009 (888) 869-1215
www.msa-ps.com
© MSA Professional Services, Inc.

MAIN STREET IMPROVEMENTS
VILLAGE OF LUCK
POLK COUNTY, WISCONSIN

R4 PLAN & PROFILE - THIRD AVENUE

FILE NO. 00524035
SHEET R4

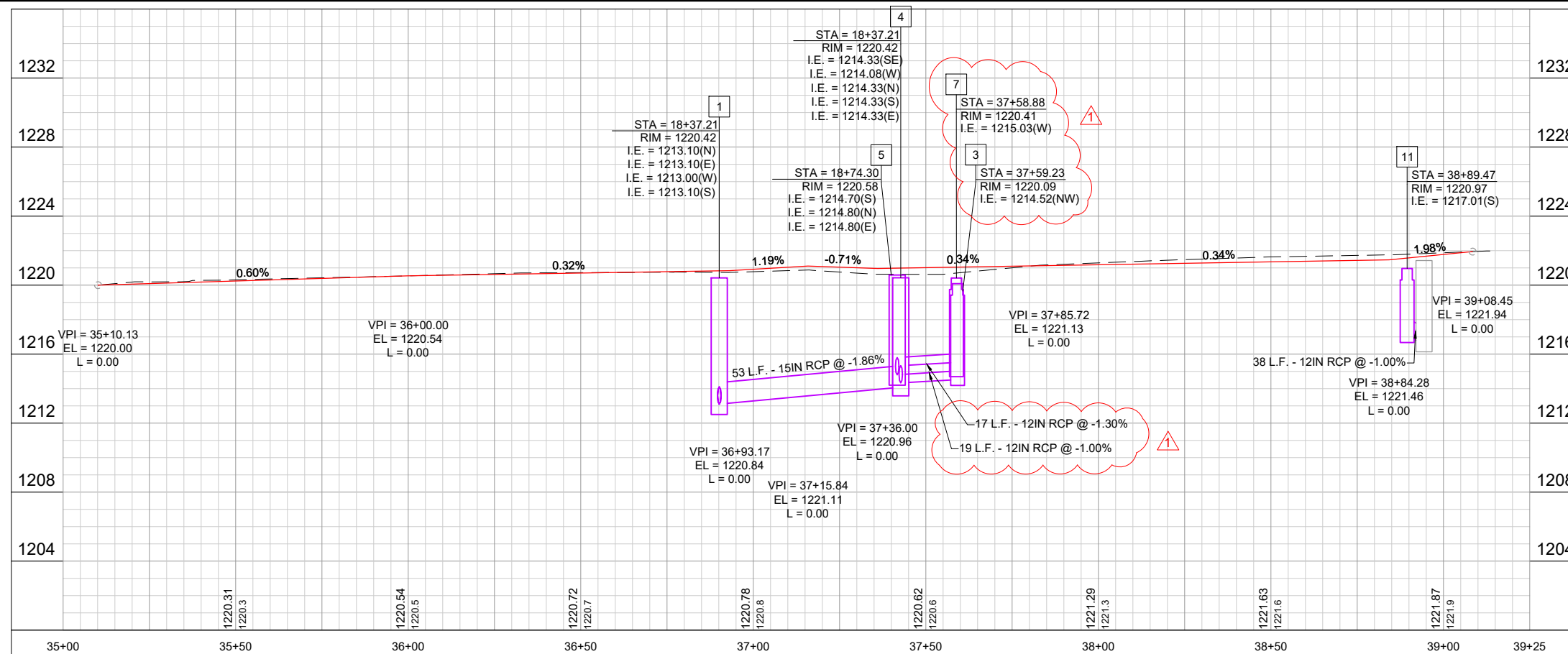
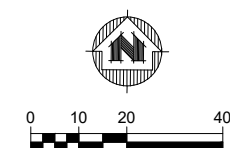
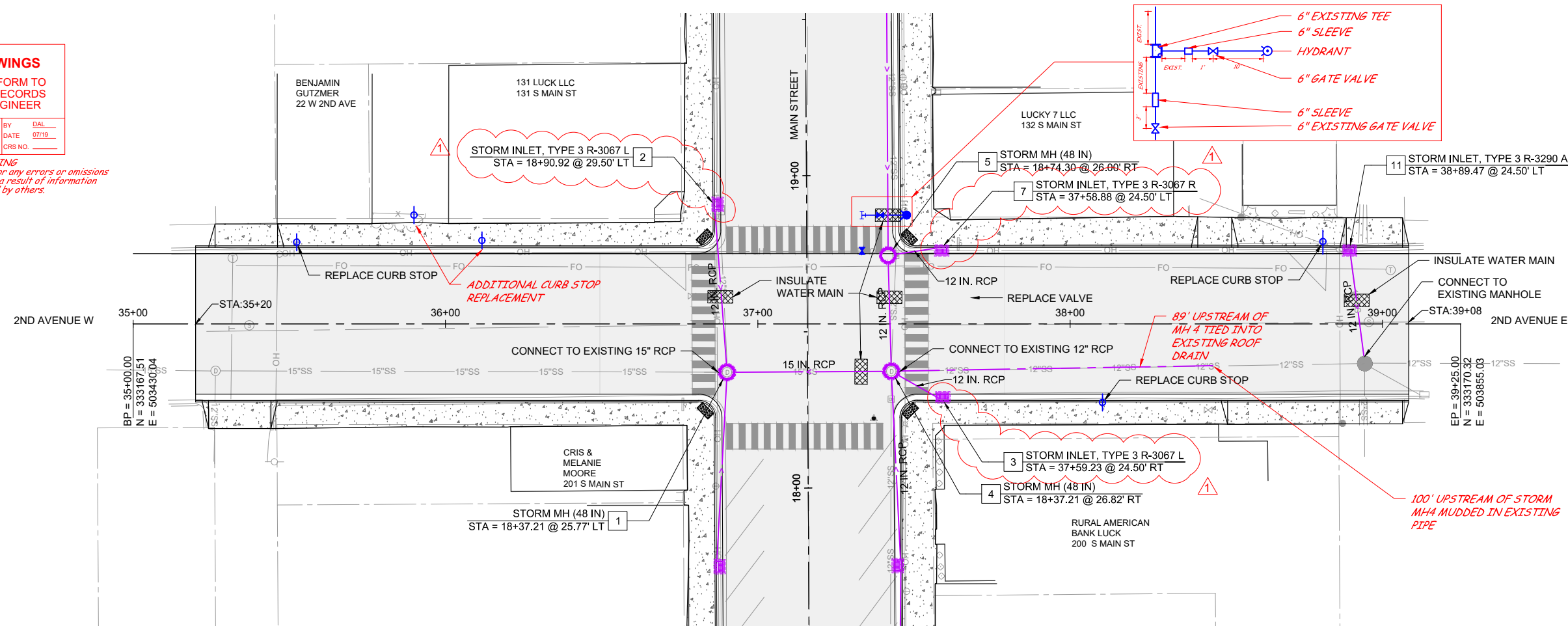
RECORD DRAWINGS

REVISED TO CONFORM TO
CONSTRUCTION RECORDS
PROVIDED BY ENGINEER



BY: DAL
DATE: 07/19
CRS NO.:

*RECORD DRAWING
The Engineer will not be responsible for any errors or omissions
incorporated into this document as a result of information
compiled and furnished by others.*



PROJECT NO.:	00524035	SCALE:	AS SHOWN	NO.:		DATE:		REVISION:		BY:	
PROJECT DATE:	5/04/2018	DRAWN BY:	JAS	1		0/27/18		STORM INLETS RELOCATED		JAS	
F.B.:		CHECKED BY:	TKA								
PLOT DATE: 7/15/19, P:1520\52400524035\CADD\Record Drawings\Drew's Workspace\00524035 Plan Profile Second Ave R5 Record Drawings.dwg											

MSA ARCHITECTURE | ENGINEERING | ENVIRONMENTAL
FUNDING | PLANNING | SURVEYING
11 E Marshall St Rice Lake, WI 54868
(715) 234-1009 (888) 869-1215
www.msa-ps.com
© MSA Professional Services, Inc.

MAIN STREET IMPROVEMENTS
VILLAGE OF LUCK
POLK COUNTY, WISCONSIN

R5 PLAN & PROFILE - SECOND AVENUE

FILE NO. 00524035
SHEET R5

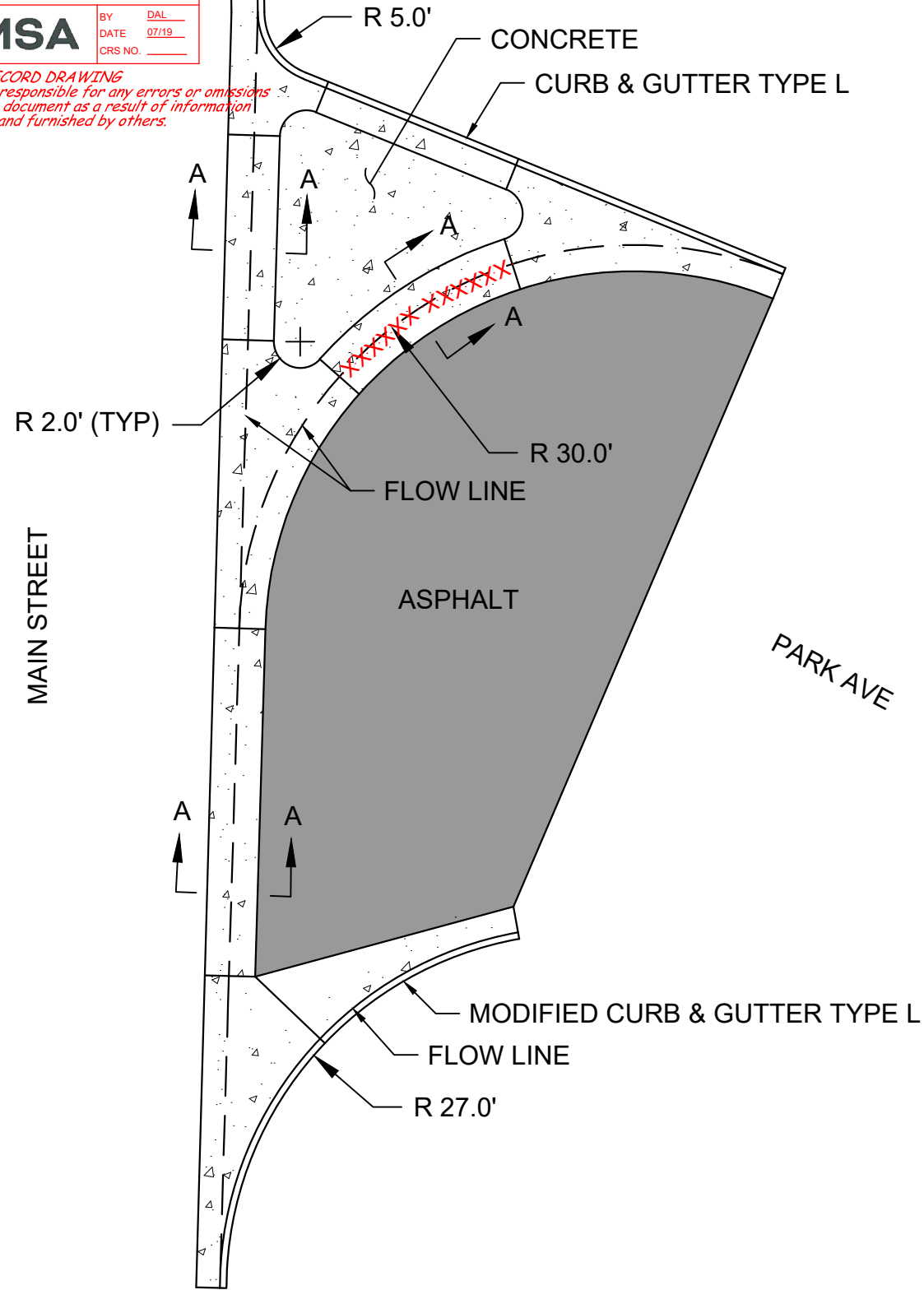
RECORD DRAWINGS

REVISED TO CONFORM TO
CONSTRUCTION RECORDS
PROVIDED BY ENGINEER



BY DAL
DATE 07/19
CRS NO. _____

*RECORD DRAWING
The Engineer will not be responsible for any errors or omissions
incorporated into this document as a result of information
compiled and furnished by others.*



PLAN



MAIN STREET IMPROVEMENTS
VILLAGE OF LUCK
POLK COUNTY, WISCONSIN

SPECIAL WATERWAY DETAIL
ADDENDUM 1 - 05/15/2018

FILE NO.
00524035
SHEET
1 OF 1

P:\10230\104\020\020103\020103\020103\Special Waterway Detail\Addendum1 Record Drawings.dwg