

# PEP ENVIRONMENTAL SERVICES, LLC

September 29, 2010

Mr. John Feeney  
c/o: Victoria Stovall  
WDNR  
2300 N. Dr. Martin Luther King, Jr., Drive  
Milwaukee, WI 53212



Re: Groundwater Monitoring Update – Twin Lakes Laundry, 111 S. Lake Avenue, Twin Lakes, WI. WDNR BRRTS # 02-13-545024. PEP Project No. 26010.02.

30

Dear John:

This brief report presents the results of four rounds of groundwater monitoring we completed following the completion of the site investigation report dated May 2008. These groundwater sampling events occurred on a bi-annual basis between October 2008 and April 2010. We also installed a sub-slab venting system within the source area.

### Groundwater Sampling

In October 2008, April 2009, October 2009, and April 2010, we completed groundwater sampling of the seven (7) monitoring wells, one (1) piezometer, and usually seven or eight potable wells, depending on accessibility. We purged the monitoring wells and piezometer with an electric pump, allowed them to recharge, and collected samples with disposable bailers. Potable well samples were collected by flushing the tap for approximately three minutes before lowering the flow rate and collecting the sample. We collected all samples in laboratory approved vials preserved with HCL and placed them on ice in a cooler for delivery to Pace Analytical in Green Bay, Wisconsin. All of the samples were analyzed for volatile organic compounds (VOCs) by method EPA 8260.

For the most part, VOC concentrations have generally remained stable over the last four years. One notable exception to this is the PCE concentration in MW-3, which has shown an upward trend since 2006. MW-3 is immediately downgradient of the source area beneath the southeast corner of the Twin Lakes Laundry building. The former dry cleaning equipment was located in the southeast corner of the building. VOC levels in the potable wells have remained steady, with no NR 140 ES exceedances.

The sample results are summarized in the attached tables. A Figure showing the well locations and other site features is attached. Groundwater flow direction has remained consistent and flows to the south-southeast.

### Sub-Slab Venting System

In December 2008, PEP arranged for the installation of a sub-slab depressurization system, or venting system. The system was installed by coring two 3-inch diameter holes through the concrete floor slab in the southeast corner of the Twin Lakes Laundry building; the suction points are about 15 feet apart. The suction is provided by a RadonAway brand HS2000 series intake suction fan, which is attached to the outside of the building and runs continuously. The suction discharge is vented through the roof of the building. The purpose of this system is twofold: first, it eliminates the potential for vapor intrusion into the building; second, the suction should help to extract VOC contamination from the soil below the slab by volatilization. In September 2010, we installed a third suction point just outside the south wall of the building, in an attempt to affect a suction on a larger area of soil contamination just downgradient of the source area.

7147 Cedar Sauk Road, Saukville, WI 53080-2452  
Phone: 414-801-1730 Fax: 262-675-2062 Email: pepenviro@core.com

The work we completed since October 2008 was outlined in our Change Order #2 request, dated June 8, 2008, and subsequently approved by you on October 17, 2008. Because we have completed the work outlined in that Change Order, we intend to submit a DERF claim shortly. In the meantime, we are investigating additional remedial options to address the source area of contamination below the southeast corner of the building.

If you have any questions about the work we have completed, please contact me at 414-801-1730.

Sincerely,

A handwritten signature in black ink, appearing to read "Pete Pavalko", written in a cursive style.

Pete Pavalko, CHMM  
President

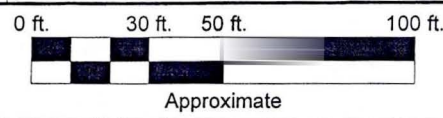
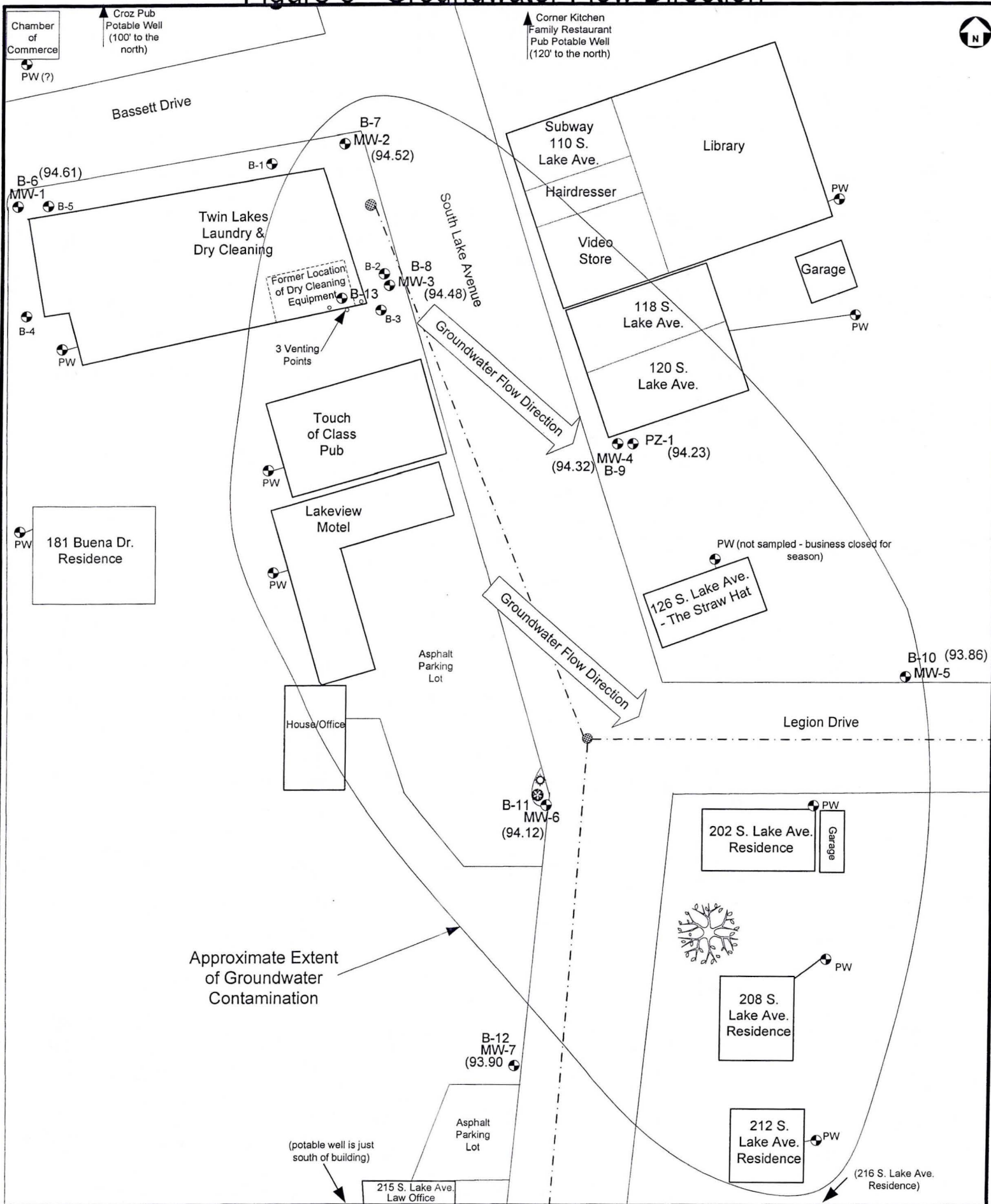
Cc: Mr. Tom Olsen, P.O. Box 1012, Twin Lakes, WI 53181

**Site Figure**

**And**

**Analytical Results**

# Figure 5 - Groundwater Flow Direction



- Soil Boring Location and Number (93.80) - Relative Groundwater Elevation (4/16/2010)
- Manhole
- SS Storm Sewer
- SAN Sanitary Sewer

<b>PEP Environmental Services, LLC</b>	
Twin Lakes Laundry Twin Lakes, WI	26010.01



**TABLE 2  
ANALYTICAL RESULTS - POTABLE WATER SAMPLES FROM DRINKING WATER WELLS  
TWIN LAKES LAUNDRY & DRY CLEANING (TLLDC) (BRRTS #: 02-30-545024)  
111 SOUTH LAKE AVENUE, TWIN LAKES, KENOSHA COUNTY, WISCONSIN**

Sample Name	MW-1							NR 140 Remedial Action Limits	
	MW-1								
Sample Location	On-Site, Upgradient								
Direction from TLLDC (estimated gradient from TLLDC)	On-Site, Upgradient								
Date Sampled	10/20/2006	3/21/2007	9/14/2007	10/30/2008	4/30/2009	10/23/2009	4/16/2010		
VOCs (ppb)								ES	PAL
Benzene	< 0.20	< 0.20	< 0.20	< 0.41	< 0.41	< 0.41	< 0.41	5	0.5
Bromodichloromethane	< 0.20	< 0.20	< 0.20	< 0.56	< 0.56	< 0.56	< 0.56	0.6	0.06
Chlorobenzene	< 0.20	< 0.20	< 0.20	< 0.41	< 0.41	< 0.41	< 0.41	NS	NS
Chloroform	< 0.20	< 0.20	< 0.20	< 1.3	< 1.3	< 1.3	< 1.3	6	0.6
Chloromethane	< 0.20	< 0.20	<u>1.1</u>	< 0.24	< 0.29	< 0.29	< 0.29	3	0.3
1,1-Dichloroethane	< 0.50	< 0.50	< 0.50	< 0.75	< 0.75	< 0.75	< 0.75	850	85
1,1-Dichloroethene	< 0.50	< 0.50	< 0.50	< 0.57	< 0.57	< 0.57	< 0.57	7	0.7
cis-1,2-Dichloroethene	1.1	< 0.50	< 0.50	< 0.83	< 0.83	< 0.83	< 0.83	70	7
trans-1,2-dichloroethene	< 0.50	< 0.50	< 0.50	< 0.89	< 0.89	< 0.89	< 0.89	100	20
Ethylbenzene	< 0.50	< 0.50	< 0.50	< 0.54	< 0.54	< 0.54	< 0.54	700	140
MTBE	< 0.50	< 0.50	< 0.50	< 0.61	< 0.61	< 0.61	< 0.61	60	12
Naphthalene	< 0.25	< 0.25	< 0.25	< 0.89	< 0.89	< 0.89	< 0.89	40	8
Styrene	< 0.20	< 0.20	< 0.20	< 0.86	< 0.86	< 0.86	< 0.86	100	10
Tetrachloroethene (PCE)	< 0.50	< 0.50	< 0.50	< 0.45	< 0.45	< 0.45	< 0.45	5	0.5
Toluene	0.26	< 0.20	< 0.20	< 0.67	< 0.67	< 0.67	< 0.67	1,000	200
1,1,1-Trichloroethane	< 0.50	< 0.50	< 0.50	< 0.90	< 0.90	< 0.90	< 0.90	200	40
Trichloroethene (TCE)	0.26	< 0.20	< 0.20	< 0.48	< 0.48	< 0.48	< 0.48	5	0.5
1,2,4-Trimethylbenzene	< 0.20	< 0.20	< 0.20	< 0.97	< 0.97	< 0.97	< 0.97	480	96
1,3,5-Trimethylbenzene	< 0.20	< 0.20	< 0.20	< 0.83	< 0.83	< 0.83	< 0.83		
Vinyl Chloride	< 0.20	< 0.20	< 0.20	< 0.18	< 0.18	< 0.18	< 0.18	0.2	0.02
Xylene (total)	< 0.50	< 0.50	< 0.50	< 1.8	< 1.8	< 1.8	< 1.8	10,000	1,000
DO (ppm)		1.50	0.40	0.60	0.85	0.90	1.55		
Temperature (C)		6.1	15.6	14.3	8	13.2	6.5		
Top of Casing Elevation	100.49	100.49	100.49	100.49	100.49	100.49	100.49		
Groundwater to Top of Casing	7.87	6.97	6.69	6.05	4.8	5.85	5.88		
Relative Groundwater Elevation	92.62	93.52	93.8	94.44	95.69	94.64	94.61		

NS = no standards

MTBE = methyl-tert-butyl-ether

Bolded values indicate concentrations above ES.

Underlined values indicate concentrations above PAL.

For a complete list of VOCs and detection limits, see the laboratory report.

NA = Not Analyzed

**TABLE 2  
ANALYTICAL RESULTS - POTABLE WATER SAMPLES FROM DRINKING WATER WELLS  
TWIN LAKES LAUNDRY & DRY CLEANING (TLLDC) (BRRTS #: 02-30-545024)  
111 SOUTH LAKE AVENUE, TWIN LAKES, KENOSHA COUNTY, WISCONSIN**

Sample Name	MW-2							NR 140 Remedial Action Limits	
	MW-2								
Sample Location	MW-2								
Direction from TLLDC (estimated gradient from TLLDC)	On-Site, Cross-gradient								
Date Sampled	10/20/2006	3/21/2007	9/14/2007	10/30/2008	4/30/2009	10/23/2009	4/16/2010		
<b>VOCs (ppb)</b>								<b>ES</b>	<b>PAL</b>
Benzene	< 0.20	< 0.20	< 0.20	< 0.41	< 0.41	< 0.41	< 0.41	5	0.5
Bromodichloromethane	< 0.20	< 0.20	< 0.20	< 0.56	< 0.56	< 0.56	< 0.56	0.6	0.06
Chlorobenzene	< 0.20	< 0.20	< 0.20	< 0.41	< 0.41	< 0.41	< 0.41	NS	NS
Chloroform	< 0.20	< 0.20	< 0.20	< 1.3	< 1.3	< 1.3	< 1.3	6	0.6
Chloromethane	< 0.20	< 0.20	<u>1.4</u>	< 0.24	<b>14.3</b>	< 0.24	< 0.24	3	0.3
1,1-Dichloroethane	< 0.50	< 0.50	< 0.50	< 0.75	< 0.75	< 0.75	< 0.75	850	85
1,1-Dichloroethene	< 0.50	< 0.50	< 0.50	< 0.57	< 0.57	< 0.57	< 0.57	7	0.7
cis-1,2-Dichloroethene	<u>8.7</u>	<u>7.5</u>	<u>7.6</u>	3.0	1.7	2.2	1.8	70	7
trans-1,2-dichloroethene	2.8	2.5	2.5	0.93	< 0.89	1	< 0.89	100	20
Ethylbenzene	< 0.50	< 0.50	< 0.50	< 0.54	< 0.54	< 0.54	< 0.54	700	140
MTBE	4	1.9	< 0.50	< 0.61	< 0.61	< 0.61	< 0.61	60	12
Naphthalene	< 0.25	< 0.25	< 0.25	< 0.89	< 0.89	< 0.89	< 0.89	40	8
Styrene	< 0.20	< 0.20	< 0.20	< 0.86	< 0.86	< 0.86	< 0.86	100	10
Tetrachloroethene (PCE)	<b>73</b>	<b>70</b>	<b>94</b>	<b>153</b>	<b>124</b>	<b>149</b>	<b>54.1</b>	5	0.5
Toluene	0.41	0.3	0.22	< 0.67	< 0.67	< 0.67	< 0.67	1,000	200
1,1,1-Trichloroethane	< 0.50	< 0.50	< 0.50	< 0.90	< 0.90	< 0.90	< 0.90	200	40
Trichloroethene (TCE)	20	17	19	<b>16.9</b>	<b>11.9</b>	15	<b>6.2</b>	5	0.5
1,2,4-Trimethylbenzene	< 0.20	< 0.20	< 0.20	< 0.97	< 0.97	< 0.97	< 0.97	480	96
1,3,5-Trimethylbenzene	< 0.20	< 0.20	< 0.20	< 0.83	< 0.83	< 0.83	< 0.83		
Vinyl Chloride	< 0.20	< 0.20	< 0.20	< 0.18	< 0.18	< 0.18	< 0.18	0.2	0.02
Xylene (total)	< 0.50	< 0.50	< 0.50	< 1.8	< 1.8	< 1.8	< 1.8	10,000	1,000
DO (ppm)		4.08	1.60	2.80	2.35	1.45	2.35		
Temperature (C)		6.6	18.0	16.0	8.1	15.0	9.0		
Top of Casing Elevation	99.81	99.81	99.81	99.81	99.81	99.81	99.81		
Groundwater to Top of Casing	7.22	6.35	6.09	5.43	4.2	5.2	5.29		
Relative Groundwater Elevation	92.59	93.46	93.72	94.38	95.61	94.61	94.52		

NS = no standards

MTBE = methyl-tert-butyl-ether

Bolded values indicate concentrations above ES.

Underlined values indicate concentrations above PAL.

For a complete list of VOCs and detection limits, see the laboratory report.

NA = Not Analyzed

**TABLE 2  
ANALYTICAL RESULTS - POTABLE WATER SAMPLES FROM DRINKING WATER WELLS  
TWIN LAKES LAUNDRY & DRY CLEANING (TLLDC) (BRRTS #: 02-30-545024)  
111 SOUTH LAKE AVENUE, TWIN LAKES, KENOSHA COUNTY, WISCONSIN**

Sample Name	MW-3							NR 140 Remedial Action Limits	
	MW-3								
Sample Location	MW-3								
Direction from TLLDC (estimated gradient from TLLDC)	On-Site, Down-gradient								
Date Sampled	10/20/2006	3/21/2007	9/14/2007	10/30/2008	4/30/2009	10/23/2009	4/16/2010		
VOCs (ppb)								ES	PAL
Benzene	0.34	< 8	< 6.4	< 16.4	< 8.2	< 10.2	< 10.2	5	0.5
Bromodichloromethane	< 0.20	< 8	< 6.4	< 22.4	< 11.2	< 14	< 14	0.6	0.06
Chlorobenzene	0.31	< 8	< 6.4	< 16.4	< 8.2	< 10.2	< 10.2	NS	NS
Chloroform	< 0.20	< 8	< 6.4	< 52	< 26	< 32.5	< 32.5	6	0.6
Chloromethane	< 0.20	< 8	< 6.4	< 9.6	< 4.8	< 6	< 6	3	0.3
1,1-Dichloroethane	< 0.50	< 20	< 16	< 30	< 15	< 18.8	< 18.8	850	85
1,1-Dichloroethene	<u>2.5</u>	< 20	< 16	< 22.8	< 11.4	< 14.2	< 14.2	7	0.7
cis-1,2-Dichloroethene	<b>5,100</b>	<b>1,200</b>	<b>1,800</b>	<b>808</b>	<b>533</b>	<b>468</b>	<b>495</b>	70	7
trans-1,2-dichloroethene	48	< 20	19	< 35.6	<u>40.2</u>	< 22.2	< 22.2	100	20
Ethylbenzene	< 0.50	< 20	< 16	< 21.6	< 10.8	< 13.5	< 13.5	700	140
MTBE	7.9	< 20	< 16	< 24.4	< 12.2	< 15.2	< 15.2	60	12
Naphthalene	< 0.25	< 10	< 8	< 35.6	< 17.8	< 22.2	< 22.2	40	8
Styrene	< 0.20	< 8	< 6.4	< 34.4	< 17.2	< 21.5	< 21.5	100	10
Tetrachloroethene (PCE)	<b>1,900</b>	<b>1,600</b>	<b>2,500</b>	<b>2,650</b>	<b>3,350</b>	<b>3,640</b>	<b>3,050</b>	5	0.5
Toluene	0.93	< 8	< 6.4	< 26.8	< 13.4	< 16.8	< 16.8	1,000	200
1,1,1-Trichloroethane	< 0.50	< 20	< 16	< 36	< 18	< 22.5	< 22.5	200	40
Trichloroethene (TCE)	<b>350</b>	<b>470</b>	<b>1,100</b>	<b>1,090</b>	<b>1,240</b>	<b>991</b>	<b>1,070</b>	5	0.5
1,2,4-Trimethylbenzene	< 0.20	< 8	< 6.4	< 38.8	19.4	< 24.2	< 24.2	480	96
1,3,5-Trimethylbenzene	< 0.20	< 8	< 6.4	< 33.2	16.6	< 20.8	< 20.8		
Vinyl Chloride	1.7	< 8	< 6.4	< 7.2	< 3.6	< 4.5	< 4.5	0.2	0.02
Xylene (total)	< 0.50	< 20	< 16	< 72	< 36	< 45	< 45	10,000	1,000
DO (ppm)		2.24	0.30	0.61	1.88	1.10	1.50		
Temperature (C)		8.1	18.4	15.2	8.6	14.8	9.5		
Top of Casing Elevation	99.62	99.62	99.62	99.62	99.62	99.62	99.62		
Groundwater to Top of Casing	7.08	6.20	5.95	5.31	4.13	5.03	5.14		
Relative Groundwater Elevation	92.54	93.42	93.67	94.31	95.49	94.59	94.48		

NS = no standards

MTBE = methyl-tert-butyl-ether

Bolded values indicate concentrations above ES.

Underlined values indicate concentrations above PAL.

For a complete list of VOCs and detection limits, see the laboratory report.

NA = Not Analyzed

**TABLE 2  
ANALYTICAL RESULTS - POTABLE WATER SAMPLES FROM DRINKING WATER WELLS  
TWIN LAKES LAUNDRY & DRY CLEANING (TLLDC) (BRRTS #: 02-30-545024)  
111 SOUTH LAKE AVENUE, TWIN LAKES, KENOSHA COUNTY, WISCONSIN**

Sample Name	MW-4							NR 140 Remedial Action Limits	
	MW-4								
Sample Location	MW-4								
Direction from TLLDC (estimated gradient from TLLDC)	Southeast, Downgradient								
Date Sampled	10/20/2006	3/21/2007	9/14/2007	10/30/2008	4/30/2009	10/23/2009	4/16/2010		
VOCs (ppb)								ES	PAL
Benzene	0.20	< 0.20	< 0.20	< 0.41	< 0.41	< 0.41	< 0.41	5	0.5
Bromodichloromethane	< 0.20	< 0.20	< 0.20	< 0.56	< 0.56	< 0.56	< 0.56	0.6	0.06
Chlorobenzene	< 0.20	< 0.20	< 0.20	< 0.41	< 0.41	< 0.41	< 0.41	NS	NS
Chloroform	< 0.20	< 0.20	< 0.20	< 1.3	< 1.3	< 1.3	< 1.3	6	0.6
Chloromethane	< 0.20	< 0.20	<u>0.87</u>	< 0.24	< 0.24	< 0.24	< 0.24	3	0.3
1,1-Dichloroethane	< 0.50	< 0.50	< 0.50	< 0.75	< 0.75	< 0.75	< 0.75	850	85
1,1-Dichloroethene	< 0.50	< 0.50	< 0.50	< 0.57	< 0.57	< 0.57	< 0.57	7	0.7
cis-1,2-Dichloroethene	0.84	< 0.50	< 0.50	< 0.83	< 0.83	< 0.83	< 0.83	70	7
trans-1,2-dichloroethene	< 0.50	< 0.50	< 0.50	< 0.89	< 0.89	< 0.89	< 0.89	100	20
Ethylbenzene	< 0.50	< 0.50	< 0.50	< 0.54	< 0.54	< 0.54	< 0.54	700	140
MTBE	< 0.50	< 0.50	< 0.50	< 0.61	< 0.61	< 0.61	< 0.61	60	12
Naphthalene	< 0.25	< 0.25	< 0.25	< 0.89	< 0.89	< 0.89	< 0.89	40	8
Styrene	< 0.20	< 0.20	< 0.20	< 0.86	< 0.86	< 0.86	< 0.86	100	10
Tetrachloroethene (PCE)	<u>1.4</u>	< 0.50	< 0.50	< 0.45	< 0.45	< 0.45	< 0.45	5	0.5
Toluene	0.59	0.74	0.41	< 0.67	< 0.67	< 0.67	< 0.67	1,000	200
1,1,1-Trichloroethane	< 0.50	< 0.50	< 0.50	< 0.90	< 0.90	< 0.90	< 0.90	200	40
Trichloroethene (TCE)	<u>0.51</u>	< 0.20	< 0.20	< 0.48	< 0.48	< 0.48	< 0.48	5	0.5
1,2,4-Trimethylbenzene	< 0.20	0.33	0.33	< 0.97	< 0.97	< 0.97	< 0.97	480	96
1,3,5-Trimethylbenzene	< 0.20	< 0.20	< 0.20	< 0.83	< 0.83	< 0.83	< 0.83		
Vinyl Chloride	< 0.20	< 0.20	< 0.20	< 0.18	< 0.18	< 0.18	< 0.18	0.2	0.02
Xylene (total)	< 0.50	0.51	0.51	< 1.8	< 1.8	< 1.8	< 1.8	10,000	1,000
DO (ppm)		0.40	0.65	0.55	0.60	0.58	2.53		
Temperature (C)		7.5	17.6	15.7	8.4	13.9	10		
Top of Casing Elevation	98.86	98.86	98.86	98.86	98.86	98.86	98.86		
Groundwater to Top of Casing	6.47	5.60	5.42	4.78	3.63	4.50	4.54		
Relative Groundwater Elevation	92.39	93.26	93.44	94.08	95.23	94.36	94.32		

NS = no standards

MTBE = methyl-tert-butyl-ether

Bolded values indicate concentrations above ES.

Underlined values indicate concentrations above PAL.

For a complete list of VOCs and detection limits, see the laboratory report.

NA = Not Analyzed



**TABLE 2  
ANALYTICAL RESULTS - POTABLE WATER SAMPLES FROM DRINKING WATER WELLS  
TWIN LAKES LAUNDRY & DRY CLEANING (TLLDC) (BRRTS #: 02-30-545024)  
111 SOUTH LAKE AVENUE, TWIN LAKES, KENOSHA COUNTY, WISCONSIN**

Sample Name	MW-5							NR 140 Remedial Action Limits	
	MW-5								
Sample Location	MW-5								
Direction from TLLDC (estimated gradient from TLLDC)	Southeast, Downgradient								
Date Sampled	10/20/2006	3/21/2007	9/14/2007	10/30/2008	4/30/2009	10/23/2009	4/16/2010		
VOCs (ppb)								ES	PAL
Benzene	< 0.20	< 0.20	< 0.20	< 0.41	< 0.41	< 0.41	< 0.41	5	0.5
Bromodichloromethane	< 0.20	< 0.20	< 0.20	< 0.56	< 0.56	< 0.56	< 0.56	0.6	0.06
Chlorobenzene	< 0.20	< 0.20	< 0.20	< 0.41	< 0.41	< 0.41	< 0.41	NS	NS
Chloroform	< 0.20	< 0.20	0.56	< 1.3	< 1.3	< 1.3	< 1.3	6	0.6
Chloromethane	< 0.20	< 0.20	<u>1.3</u>	< 0.24	< 0.24	< 0.24	< 0.24	3	0.3
1,1-Dichloroethane	< 0.50	< 0.50	< 0.50	< 0.75	< 0.75	< 0.75	< 0.75	850	85
1,1-Dichloroethene	< 0.50	< 0.50	< 0.50	< 0.57	< 0.57	< 0.57	< 0.57	7	0.7
cis-1,2-Dichloroethene	< 0.50	< 0.50	1.4	< 0.83	< 0.83	< 0.83	< 0.83	70	7
trans-1,2-dichloroethene	< 0.50	< 0.50	< 0.50	< 0.89	< 0.89	< 0.89	< 0.89	100	20
Ethylbenzene	< 0.50	< 0.50	< 0.50	< 0.54	< 0.54	< 0.54	< 0.54	700	140
MTBE	< 0.50	< 0.50	< 0.50	< 0.61	< 0.61	< 0.61	< 0.61	60	12
Naphthalene	< 0.25	< 0.25	< 0.25	< 0.89	< 0.89	< 0.89	< 0.89	40	8
Styrene	< 0.20	< 0.20	< 0.20	< 0.86	< 0.86	< 0.86	< 0.86	100	10
Tetrachloroethene (PCE)	<u>1.0</u>	< 0.50	< 0.50	< 0.45	< 0.45	< 0.45	< 0.45	5	0.5
Toluene	0.35	< 0.20	0.75	< 0.67	< 0.67	< 0.67	< 0.67	1,000	200
1,1,1-Trichloroethane	< 0.50	< 0.50	< 0.50	< 0.90	< 0.90	< 0.90	< 0.90	200	40
Trichloroethene (TCE)	0.21	< 0.20	< 0.20	< 0.48	< 0.48	< 0.48	< 0.48	5	0.5
1,2,4-Trimethylbenzene	< 0.20	< 0.20	< 0.20	< 0.97	< 0.97	< 0.97	< 0.97	480	96
1,3,5-Trimethylbenzene	< 0.20	< 0.20	< 0.20	< 0.83	< 0.83	< 0.83	< 0.83		
Vinyl Chloride	< 0.20	< 0.20	< 0.20	< 0.18	< 0.18	< 0.18	< 0.18	0.2	0.02
Xylene (total)	< 0.50	< 0.50	< 0.50	< 1.8	< 1.8	< 1.8	< 1.8	10,000	1,000
DO (ppm)		1.05	0.50	0.86	0.85	0.77	1.35		
Temperature (C)		5.1	18.3	14.5	7.9	14.1	8.8		
Top of Casing Elevation	97.76	97.76	97.76	97.76	97.76	97.76	97.76		
Groundwater to Top of Casing	5.54	4.81	4.68	4.08	2.95	3.71	3.9		
Relative Groundwater Elevation	92.22	92.95	93.08	93.68	94.81	94.05	93.86		

NS = no standards

MTBE = methyl-tert-butyl-ether

Bolded values indicate concentrations above ES.

Underlined values indicate concentrations above PAL.

For a complete list of VOCs and detection limits, see the laboratory report.

NA = Not Analyzed

**TABLE 2  
ANALYTICAL RESULTS - POTABLE WATER SAMPLES FROM DRINKING WATER WELLS  
TWIN LAKES LAUNDRY & DRY CLEANING (TLLDC) (BRRTS #: 02-30-545024)  
111 SOUTH LAKE AVENUE, TWIN LAKES, KENOSHA COUNTY, WISCONSIN**

Sample Name	MW-6							NR 140 Remedial Action Limits	
	MW-6								
Sample Location	MW-6								
Direction from TLLDC (estimated gradient from TLLDC)	South, Downgradient								
Date Sampled	10/20/2006	3/21/2007	9/14/2007	10/30/2008	4/30/2009	10/23/2009	4/16/2010		
VOCs (ppb)								ES	PAL
Benzene	< 0.20	< 0.20	< 0.20	< 0.41	< 0.41	< 0.41	< 0.41	5	0.5
Bromodichloromethane	< 0.20	< 0.20	< 0.20	< 0.56	< 0.56	< 0.56	< 0.56	0.6	0.06
Chlorobenzene	< 0.20	< 0.20	< 0.20	< 0.41	< 0.41	< 0.41	< 0.41	NS	NS
Chloroform	< 0.20	< 0.20	< 0.20	< 1.3	< 1.3	< 1.3	< 1.3	6	0.6
Chloromethane	< 0.20	< 0.20	< 0.20	< 0.24	< 0.24	< 0.24	< 0.24	3	0.3
1,1-Dichloroethane	< 0.50	< 0.50	< 0.50	< 0.75	< 0.75	< 0.75	< 0.75	850	85
1,1-Dichloroethene	< 0.50	< 0.50	< 0.50	< 0.57	< 0.57	< 0.57	< 0.57	7	0.7
cis-1,2-Dichloroethene	<u>11</u>	0.87	0.98	< 0.83	3.1	< 0.83	2.6	70	7
trans-1,2-dichloroethene	< 0.50	< 0.50	< 0.50	< 0.89	< 0.89	< 0.89	< 0.89	100	20
Ethylbenzene	< 0.50	< 0.50	< 0.50	< 0.54	< 0.54	< 0.54	< 0.54	700	140
MTBE	< 0.50	< 0.50	< 0.50	< 0.61	< 0.61	< 0.61	< 0.61	60	12
Naphthalene	< 0.25	< 0.25	< 0.25	< 0.89	< 0.89	< 0.89	< 0.89	40	8
Styrene	< 0.20	< 0.20	< 0.20	< 0.86	< 0.86	< 0.86	< 0.86	100	10
Tetrachloroethene (PCE)	<u>1.8</u>	< 0.50	< 0.50	< 0.45	< 0.45	< 0.45	< 0.45	5	0.5
Toluene	0.45	0.27	0.23	< 0.67	< 0.67	< 0.67	< 0.67	1,000	200
1,1,1-Trichloroethane	< 0.50	< 0.50	< 0.50	< 0.90	< 0.90	< 0.90	< 0.90	200	40
Trichloroethene (TCE)	<b>6.0</b>	<u>0.93</u>	<u>0.87</u>	< 0.48	< 0.48	< 0.48	< 0.48	5	0.5
1,2,4-Trimethylbenzene	< 0.20	< 0.20	< 0.20	< 0.97	< 0.97	< 0.97	< 0.97	480	96
1,3,5-Trimethylbenzene	< 0.20	< 0.20	< 0.20	< 0.83	< 0.83	< 0.83	< 0.83		
Vinyl Chloride	< 0.20	< 0.20	< 0.20	< 0.18	< 0.18	< 0.18	< 0.18	0.2	0.02
Xylene (total)	< 0.50	< 0.50	< 0.50	< 1.8	< 1.8	< 1.8	< 1.8	10,000	1,000
DO (ppm)		0.85	0.37	1.70	1.05	1.10	2.80		
Temperature (C)		7.4	17.6	15.3	8.1	14.4	9.1		
Top of Casing Elevation	98.76	98.76	98.76	98.76	98.76	98.76	98.76		
Groundwater to Top of Casing	6.27	5.59	5.40	4.50	4.13	4.48	4.64		
Relative Groundwater Elevation	92.49	93.17	93.36	94.26	94.63	94.28	94.12		

NS = no standards

MTBE = methyl-tert-butyl-ether

Bolded values indicate concentrations above ES.

Underlined values indicate concentrations above PAL.

For a complete list of VOCs and detection limits, see the laboratory report.

NA = Not Analyzed

**TABLE 2  
ANALYTICAL RESULTS - POTABLE WATER SAMPLES FROM DRINKING WATER WELLS  
TWIN LAKES LAUNDRY & DRY CLEANING (TLLDC) (BRRTS #: 02-30-545024)  
111 SOUTH LAKE AVENUE, TWIN LAKES, KENOSHA COUNTY, WISCONSIN**

Sample Name	MW-7							NR 140 Remedial Action Limits	
	MW-7								
Sample Location	MW-7								
Direction from TLLDC (estimated gradient from TLLDC)	South, Downgradient								
Date Sampled	10/20/2006	3/21/2007	9/14/2007	10/30/2008	4/30/2009	10/23/2009	4/16/2010		
<b>VOCs (ppb)</b>								<i>ES</i>	<i>PAL</i>
Benzene	< 0.20	< 0.20	< 0.20	< 0.41	< 0.41	< 0.41	< 0.41	5	0.5
Bromodichloromethane	< 0.20	< 0.20	< 0.20	< 0.56	< 0.56	< 0.56	< 0.56	0.6	0.06
Chlorobenzene	< 0.20	< 0.20	< 0.20	< 0.41	< 0.41	< 0.41	< 0.41	NS	NS
Chloroform	< 0.20	< 0.20	< 0.20	< 1.3	< 1.3	< 1.3	< 1.3	6	0.6
Chloromethane	< 0.20	< 0.20	<u>0.98</u>	< 0.24	< 0.24	< 0.24	< 0.24	3	0.3
1,1-Dichloroethane	< 0.50	< 0.50	< 0.50	< 0.75	< 0.75	< 0.75	< 0.75	<b>850</b>	<b>85</b>
1,1-Dichloroethene	< 0.50	< 0.50	< 0.50	< 0.57	< 0.57	< 0.57	< 0.57	7	0.7
cis-1,2-Dichloroethene	< 0.50	< 0.50	< 0.50	< 0.83	< 0.83	< 0.83	< 0.83	70	7
trans-1,2-dichloroethene	< 0.50	< 0.50	< 0.50	< 0.89	< 0.89	< 0.89	< 0.89	100	20
Ethylbenzene	< 0.50	< 0.50	< 0.50	< 0.54	< 0.54	< 0.54	< 0.54	700	140
MTBE	< 0.50	< 0.50	< 0.50	< 0.61	< 0.61	< 0.61	< 0.61	60	12
Naphthalene	< 0.25	< 0.25	< 0.25	< 0.89	< 0.89	< 0.89	< 0.89	40	8
Styrene	< 0.20	< 0.20	< 0.20	< 0.86	< 0.86	< 0.86	< 0.86	100	10
Tetrachloroethene (PCE)	<u>1.7</u>	< 0.50	< 0.50	< 0.45	< 0.45	< 0.45	< 0.45	5	0.5
Toluene	0.40	< 0.20	< 0.20	< 0.67	< 0.67	< 0.67	< 0.67	1,000	200
1,1,1-Trichloroethane	< 0.50	< 0.50	< 0.50	< 0.90	< 0.90	< 0.90	< 0.90	200	40
Trichloroethene (TCE)	0.42	< 0.20	< 0.20	< 0.48	< 0.48	< 0.48	< 0.48	5	0.5
1,2,4-Trimethylbenzene	< 0.20	< 0.20	< 0.20	< 0.97	< 0.97	< 0.97	< 0.97	480	96
1,3,5-Trimethylbenzene	< 0.20	< 0.20	< 0.20	< 0.83	< 0.83	< 0.83	< 0.83		
Vinyl Chloride	< 0.20	< 0.20	< 0.20	< 0.18	< 0.18	< 0.18	< 0.18	0.2	0.02
Xylene (total)	< 0.50	< 0.50	< 0.50	< 1.8	< 1.8	< 1.8	< 1.8	10,000	1,000
DO (ppm)		1.08	0.60	0.65	0.95	0.88	0.95		
Temperature (C)		5.2	15.7	14.0	7.8	13.6	7.5		
Top of Casing Elevation	96.51	96.51	96.51	96.51	96.51	96.51	96.51		
Groundwater to Top of Casing	4.19	3.47	3.30	2.70	1.70	2.48	2.61		
Relative Groundwater Elevation	92.32	93.04	93.21	93.81	94.81	94.03	93.9		

NS = no standards

MTBE = methyl-tert-butyl-ether

Bolded values indicate concentrations above ES.

Underlined values indicate concentrations above PAL.

For a complete list of VOCs and detection limits, see the laboratory report.

NA = Not Analyzed

**TABLE 2  
ANALYTICAL RESULTS - POTABLE WATER SAMPLES FROM DRINKING WATER WELLS  
TWIN LAKES LAUNDRY & DRY CLEANING (TLLDC) (BRRTS #: 02-30-545024)  
111 SOUTH LAKE AVENUE, TWIN LAKES, KENOSHA COUNTY, WISCONSIN**

Sample Name	PZ-1							NR 140 Remedial Action Limits	
	PZ-1								
Sample Location									
Direction from TLLDC (estimated gradient from TLLDC)	Southeast, Downgradient (nested with MW-4)								
Date Sampled	10/20/2006	3/21/2007	9/14/2007	10/30/2008	4/30/2009	10/23/2009	4/16/2010		
VOCs (ppb)								ES	PAL
Benzene	< 2	< 0.20	< 2	< 2	< 4.1	< 4.1	< 4.1	5	0.5
Bromodichloromethane	< 2	< 0.20	< 2	< 2.8	< 5.6	< 5.6	< 5.6	0.6	0.06
Chlorobenzene	< 2	< 0.20	< 2	< 2	< 4.1	< 4.1	< 4.1	NS	NS
Chloroform	< 2	< 0.20	< 2	< 6.5	< 13	< 13	< 13	6	0.6
Chloromethane	< 2	< 0.20	< 2	< 1.2	< 2.4	< 2.4	< 2.4	3	0.3
1,1-Dichloroethane	< 5	< 0.50	< 5	< 3.8	< 7.5	< 7.5	< 7.5	850	85
1,1-Dichloroethene	< 5	< 0.50	< 5	< 2.8	< 5.7	< 5.7	< 5.7	7	0.7
cis-1,2-Dichloroethene	<b>510</b>	<b>710</b>	<b>540</b>	<b>469</b>	<b>722</b>	<b>968</b>	<b>742</b>	70	7
trans-1,2-dichloroethene	6.4	17	17	<u>29.4</u>	<u>73.7</u>	<u>50</u>	<u>38.5</u>	100	20
Ethylbenzene	< 5	< 0.50	< 5	< 2.7	< 5.4	< 5.4	< 5.4	700	140
MTBE	< 5	8.3	< 5	7.4	< 6.1	< 6.1	< 6.1	60	12
Naphthalene	< 2.5	< 0.25	< 2.5	< 4.4	< 8.9	< 8.9	< 8.9	40	8
Styrene	< 2	< 0.20	< 2	< 4.3	< 8.6	< 8.6	< 8.6	100	10
Tetrachloroethene (PCE)	< 5	< 0.50	< 5	< 2.2	< 4.5	< 4.5	< 4.5	5	0.5
Toluene	< 2	< 0.20	< 2	< 3.4	< 6.7	< 6.7	< 6.7	1,000	200
1,1,1-Trichloroethane	< 5	< 0.50	< 5	< 4.5	< 9.0	< 9.0	< 9.0	200	40
Trichloroethene (TCE)	<b>20</b>	<b>28</b>	<b>17</b>	<b>15.2</b>	<b>10.3</b>	<b>9.4</b>	<b>5.7</b>	5	0.5
1,2,4-Trimethylbenzene	< 2	< 0.20	< 2	< 4.8	< 9.7	< 9.7	< 9.7	480	96
1,3,5-Trimethylbenzene	< 2	< 0.20	< 2	< 4.2	< 8.3	< 8.3	< 8.3		
Vinyl Chloride	< 2	1.1	< 2	1.8	< 1.8	5.6	4.5	0.2	0.02
Xylene (total)	< 5	< 0.50	< 5	< 9	< 18	< 18	< 18	10,000	1,000
DO (ppm)		4.92	1.72	0.50	1.25	1.20	2.40		
Temperature (C)		8.3	17.2	16.5	8.7	15.6	10.5		
Top of Casing Elevation	98.74	98.74	98.74	98.74	98.74	98.74	98.74		
Groundwater to Top of Casing	6.34	5.60	5.28	4.65	3.50	4.35	4.51		
Relative Groundwater Elevation	92.4	93.14	93.46	94.09	95.24	94.39	94.23		

NS = no standards

MTBE = methyl-tert-butyl-ether

Bolded values indicate concentrations above ES.

Underlined values indicate concentrations above PAL.

For a complete list of VOCs and detection limits, see the laboratory report.

NA = Not Analyzed

*Screen =*



**TABLE 3  
ANALYTICAL RESULTS - POTABLE WATER SAMPLES FROM DRINKING WATER WELLS  
TWIN LAKES LAUNDRY & DRY CLEANING (TLLDC) (BRRTS #: 02-30-545024)  
111 SOUTH LAKE AVENUE, TWIN LAKES, KENOSHA COUNTY, WISCONSIN**

Sample Name	TLLDC								NR 140 Remedial Action Limits	
Sample Location	Twin Lakes Laundry & Dry Cleaning, 111 S. Lake Ave.									
Direction from TLLDC (estimated gradient from TLLDC)	The Site/Source (well is west of building)									
Date Sampled	8/30/2006	5/25/2007	12/27/2007	4/18/2008	10/30/2008	4/30/2009	10/23/2009	4/16/2010		
VOCs (ppb)									ES	PAL
Benzene	< 0.20	< 0.20	< 0.20	< 0.20	< 0.41	< 0.41	< 0.41	< 0.41	5	0.5
Bromodichloromethane	< 0.20	< 0.20	< 0.20	< 0.20	< 0.56	< 0.56	< 0.56	< 0.56	0.6	0.06
Chloroform	< 0.20	< 0.20	< 0.20	< 0.20	< 1.3	< 1.3	< 1.3	< 1.3	6	0.6
Chloromethane	< 0.20	< 0.20	< 0.20	< 0.20	< 0.24	< 0.24	< 0.24	< 0.24	3	0.3
1,1-Dichloroethane	< 0.50	< 0.50	< 0.50	< 0.50	< 0.75	< 0.75	< 0.75	< 0.75	850	85
1,1-Dichloroethene	< 0.50	< 0.50	< 0.50	< 0.50	< 0.57	< 0.57	< 0.57	< 0.57	7	0.7
cis-1,2-Dichloroethene	< 0.50	< 0.50	< 0.50	< 0.50	< 0.83	< 0.83	< 0.83	< 0.83	70	7
trans-1,2-dichloroethene	< 0.50	< 0.50	< 0.50	< 0.50	< 0.89	< 0.89	< 0.89	< 0.89	100	20
Ethylbenzene	< 0.50	< 0.50	< 0.50	< 0.50	< 0.54	< 0.54	< 0.54	< 0.54	700	140
MTBE	< 0.50	< 0.50	< 0.50	< 0.50	< 0.61	< 0.61	< 0.61	< 0.61	60	12
Naphthalene	< 0.25	< 0.25	< 0.25	< 0.25	< 0.89	< 0.89	< 0.89	< 0.89	40	8
Styrene	< 0.20	< 0.20	< 0.20	< 0.20	< 0.86	< 0.86	< 0.86	< 0.86	100	10
Tetrachloroethene (PCE)	< 0.50	< 0.50	< 0.50	< 0.50	< 0.45	< 0.45	< 0.45	< 0.45	5	0.5
Toluene	< 0.20	< 0.20	< 0.20	< 0.20	< 0.67	< 0.67	< 0.67	< 0.67	1,000	200
1,1,1-Trichloroethane	< 0.50	< 0.50	< 0.50	< 0.50	< 0.90	< 0.90	< 0.90	< 0.90	200	40
Trichloroethene (TCE)	< 0.20	< 0.20	< 0.20	< 0.20	< 0.48	< 0.48	< 0.48	< 0.48	5	0.5
1,2,4-Trimethylbenzene	< 0.20	< 0.20	< 0.20	< 0.20	< 0.97	< 0.97	< 0.97	< 0.97	480	96
1,3,5-Trimethylbenzene	< 0.20	< 0.20	< 0.20	< 0.20	< 0.83	< 0.83	< 0.83	< 0.83		
Xylene (total)	< 0.50	< 0.50	< 0.50	< 0.50	< 1.8	< 1.8	< 1.8	< 1.8	10,000	1,000

NS = no standards

MTBE = methyl-tert-butyl-ether

Bolded values indicate concentrations above ES.

Underlined values indicate concentrations above PAL.

For a complete list of VOCs and detection limits, see the laboratory report.

NA = Not Analyzed

**TABLE 3  
ANALYTICAL RESULTS - POTABLE WATER SAMPLES FROM DRINKING WATER WELLS  
TWIN LAKES LAUNDRY & DRY CLEANING (TLLDC) (BRRTS #: 02-30-545024)  
111 SOUTH LAKE AVENUE, TWIN LAKES, KENOSHA COUNTY, WISCONSIN**

Sample Name	Lake View Motel					202 S. Lake Ave. Res.							NR 140 Remedial Action Limits	
	Lake View Motel, 131 S. Lake Ave.					Residence at 202 S. Lake Ave.								
Sample Location	Lake View Motel, 131 S. Lake Ave.					Residence at 202 S. Lake Ave.								
Direction from TLLDC (estimated gradient from TLLDC)	South (downgradient)					Southeast (downgradient)								
Date Sampled	8/30/2006	5/25/2007	12/27/2007	4/18/2008	10/30/2008	8/30/2006	5/25/2007	4/18/2008	10/30/2008	4/30/2009	10/23/2009	4/16/2010		
<b>VOCs (ppb)</b>													ES	PAL
Benzene	< 0.20	< 0.20	< 0.20	< 0.20	NO	< 0.20	< 0.20	< 0.20	< 0.41	< 0.41	< 0.41	< 0.41	5	0.5
Bromodichloromethane	< 0.20	< 0.20	< 0.20	< 0.20	SAMPLE -	1	< 0.20	< 0.20	< 0.56	< 0.56	< 0.56	< 0.56	0.6	0.06
Chloroform	< 0.20	< 0.20	< 0.20	< 0.20	MOTEL IS	100	25	< 0.20	< 1.3	< 1.3	< 1.3	< 1.3	6	0.6
Chloromethane	< 0.20	< 0.20	< 0.20	< 0.20	CLOSED	< 0.20	< 0.20	< 0.20	< 0.24	< 0.24	< 0.24	< 0.24	3	0.3
1,1-Dichloroethane	< 0.50	< 0.50	< 0.50	< 0.50	PERMANETLY	< 0.50	< 0.50	< 0.50	< 0.75	< 0.75	< 0.75	< 0.75	850	85
1,1-Dichloroethene	< 0.50	< 0.50	< 0.50	< 0.50		< 0.50	< 0.50	< 0.50	< 0.57	< 0.57	< 0.57	< 0.57	7	0.7
cis-1,2-Dichloroethene	2.2	2.2	1.0	1.0		12	17	20	10.8	22.4	7.2	6.6	70	7
trans-1,2-dichloroethene	< 0.50	< 0.50	< 0.50	< 0.50		< 0.50	< 0.50	< 0.50	< 0.89	< 0.89	< 0.89	< 0.89	100	20
Ethylbenzene	< 0.50	< 0.50	< 0.50	< 0.50		< 0.50	< 0.50	< 0.50	< 0.54	< 0.54	< 0.54	< 0.54	700	140
MTBE	27	33	35	24		9.6	9.9	9.6	10.3	6.3	6.4	4.7	60	12
Naphthalene	< 0.25	< 0.25	< 0.25	< 0.25		< 0.25	< 0.25	< 0.25	< 0.89	< 0.89	< 0.89	< 0.89	40	8
Styrene	< 0.20	< 0.20	< 0.20	< 0.20		< 0.20	< 0.20	< 0.20	< 0.86	< 0.86	< 0.86	< 0.86	100	10
Tetrachloroethene (PCE)	< 0.50	< 0.50	< 0.50	< 0.50		< 0.50	< 0.50	< 0.50	< 0.45	< 0.45	< 0.45	< 0.45	5	0.5
Toluene	< 0.20	< 0.20	< 0.20	< 0.20		< 0.20	< 0.20	< 0.20	< 0.67	< 0.67	< 0.67	< 0.67	1,000	200
1,1,1-Trichloroethane	< 0.50	< 0.50	< 0.50	< 0.50		< 0.50	< 0.50	< 0.50	< 0.90	< 0.90	< 0.90	< 0.90	200	40
Trichloroethene (TCE)	< 0.20	< 0.20	< 0.20	< 0.20		< 0.20	< 0.20	< 0.20	< 0.48	< 0.48	< 0.48	< 0.48	5	0.5
1,2,4-Trimethylbenzene	< 0.20	< 0.20	< 0.20	< 0.20		< 0.20	< 0.20	< 0.20	< 0.97	< 0.97	< 0.97	< 0.97	480	96
1,3,5-Trimethylbenzene	< 0.20	< 0.20	< 0.20	< 0.20		< 0.20	< 0.20	< 0.20	< 0.83	< 0.83	< 0.83	< 0.83		
Xylene (total)	< 0.50	< 0.50	< 0.50	< 0.50		< 0.50	< 0.50	< 0.50	< 1.8	< 1.8	< 1.8	< 1.8	10,000	1,000

NS = no standards

MTBE = methyl-tert-butyl-ether

Bolded values indicate concentrations above ES.

Underlined values indicate concentrations above PAL.

For a complete list of VOCs and detection limits, see the laboratory report.

NA = Not Analyzed

**TABLE 3  
ANALYTICAL RESULTS - POTABLE WATER SAMPLES FROM DRINKING WATER WELLS  
TWIN LAKES LAUNDRY & DRY CLEANING (TLLDC) (BRRTS #: 02-30-545024)  
111 SOUTH LAKE AVENUE, TWIN LAKES, KENOSHA COUNTY, WISCONSIN**

Sample Name	Touch of Class Pub								NR 140 Remedial Action Limits	
Sample Location	Touch of Class Pub, 121 S. Lake Ave.									
Direction from TLLDC (estimated gradient from TLLDC)	South (downgradient)									
Date Sampled	8/30/2006	5/25/2007	12/27/2007	4/18/2008	10/30/2008	4/30/2009	10/23/2009	4/16/2010		
<b>VOCs (ppb)</b>									<i>ES</i>	<i>PAL</i>
Benzene	< 0.20	< 0.20	< 0.20	< 0.20	< 0.41	< 0.41	< 0.41	< 0.41	5	0.5
Bromodichloromethane	< 0.20	< 0.20	< 0.20	< 0.20	< 0.56	< 0.56	< 0.56	< 0.56	0.6	0.06
Chloroform	< 0.20	< 0.20	< 0.20	< 0.20	< 1.3	< 1.3	< 1.3	< 1.3	6	0.6
Chloromethane	0.34	< 0.20	< 0.20	< 0.20	< 0.24	< 0.24	< 0.24	< 0.24	3	0.3
1,1-Dichloroethane	< 0.50	< 0.50	< 0.50	< 0.50	< 0.75	< 0.75	< 0.75	< 0.75	850	85
1,1-Dichloroethene	< 0.50	< 0.50	< 0.50	< 0.50	< 0.57	< 0.57	< 0.57	< 0.57	7	0.7
cis-1,2-Dichloroethene	4.5	5.4	4.0	5.6	5.1	<u>7.2</u>	6.3	4.4	70	7
trans-1,2-dichloroethene	1.6	2.1	1.4	2.7	2.6	4.6	4.2	2.3	100	20
Ethylbenzene	< 0.50	< 0.50	< 0.50	< 0.50	< 0.54	< 0.54	< 0.54	< 0.54	700	140
MTBE	<u>23</u>	<u>20</u>	<u>18</u>	<u>14</u>	<u>12.1</u>	9.2	8.1	4.3	60	12
Naphthalene	< 0.25	< 0.25	< 0.25	< 0.25	< 0.89	< 0.89	< 0.89	< 0.89	40	8
Styrene	< 0.20	< 0.20	< 0.20	< 0.20	< 0.86	< 0.86	< 0.86	< 0.86	100	10
Tetrachloroethene (PCE)	< 0.50	< 0.50	< 0.50	< 0.50	< 0.45	< 0.45	< 0.45	< 0.45	5	0.5
Toluene	< 0.20	< 0.20	< 0.20	< 0.20	< 0.67	< 0.67	< 0.67	< 0.67	1,000	200
1,1,1-Trichloroethane	< 0.50	< 0.50	< 0.50	< 0.50	< 0.90	< 0.90	< 0.90	< 0.90	200	40
Trichloroethene (TCE)	0.83	0.68	0.34	0.38	< 0.48	< 0.48	0.49	0.49	5	0.5
1,2,4-Trimethylbenzene	< 0.20	< 0.20	< 0.20	< 0.20	< 0.97	< 0.97	< 0.97	< 0.97	480	96
1,3,5-Trimethylbenzene	< 0.20	< 0.20	< 0.20	< 0.20	< 0.83	< 0.83	< 0.83	< 0.83		
Xylene (total)	< 0.50	< 0.50	< 0.50	< 0.50	< 1.8	< 1.8	< 1.8	< 1.8	10,000	1,000

NS = no standards

MTBE = methyl-tert-butyl-ether

Bolded values indicate concentrations above ES.

Underlined values indicate concentrations above PAL.

For a complete list of VOCs and detection limits, see the laboratory report.

NA = Not Analyzed

**TABLE 3  
ANALYTICAL RESULTS - POTABLE WATER SAMPLES FROM DRINKING WATER WELLS  
TWIN LAKES LAUNDRY & DRY CLEANING (TLLDC) (BRRTS #: 02-30-545024)  
111 SOUTH LAKE AVENUE, TWIN LAKES, KENOSHA COUNTY, WISCONSIN**

Sample Name	120 S. Lake Ave.								NR 140 Remedial Action Limits	
Sample Location	Business at 120 S. Lake Ave.									
Direction from TLLDC (estimated gradient from TLLDC)	Southeast (downgradient)									
Date Sampled	10/19/2006	5/25/2007	12/27/2007	4/18/2008	10/30/2008	4/30/2009	10/23/2009	4/16/2010		
<b>VOCs (ppb)</b>									<i>ES</i>	<i>PAL</i>
Benzene	< 0.20	< 0.20	< 0.20	< 0.20	< 0.41	No Sample	< 0.41	< 0.41	<u>5</u>	<u>0.5</u>
Bromodichloromethane	< 0.20	< 0.20	< 0.20	< 0.20	< 0.56	Business	< 0.56	< 0.56	<u>0.6</u>	<u>0.06</u>
Chloroform	< 0.20	< 0.20	< 0.20	< 0.20	< 1.3	Was	< 1.3	< 1.3	<u>6</u>	<u>0.6</u>
Chloromethane	< 0.20	< 0.20	< 0.20	< 0.20	< 0.24	Closed	< 0.24	< 0.24	<u>3</u>	<u>0.3</u>
1,1-Dichloroethane	< 0.50	< 0.50	< 0.50	< 0.50	< 0.75	on	< 0.75	< 0.75	<u>850</u>	<u>85</u>
1,1-Dichloroethene	< 0.50	< 0.50	< 0.50	< 0.50	< 0.57	4/30/2009	< 0.57	< 0.57	<u>7</u>	<u>0.7</u>
cis-1,2-Dichloroethene	< 0.50	< 0.50	< 0.50	< 0.50	< 0.83		< 0.83	< 0.83	<u>70</u>	<u>7</u>
trans-1,2-dichloroethene	< 0.50	< 0.50	< 0.50	< 0.50	< 0.89		< 0.89	< 0.89	<u>100</u>	<u>20</u>
Ethylbenzene	< 0.50	< 0.50	< 0.50	< 0.50	< 0.54		< 0.54	< 0.54	<u>700</u>	<u>140</u>
MTBE	1.7	3.1	2.6	2.2	1.9		1.7	1.4	<u>60</u>	<u>12</u>
Naphthalene	< 0.25	< 0.25	< 0.25	< 0.25	< 0.89		< 0.89	< 0.89	<u>40</u>	<u>8</u>
Styrene	< 0.20	< 0.20	< 0.20	< 0.20	< 0.86		< 0.86	< 0.86	<u>100</u>	<u>10</u>
Tetrachloroethene (PCE)	< 0.50	< 0.50	< 0.50	< 0.50	< 0.45		< 0.45	< 0.45	<u>5</u>	<u>0.5</u>
Toluene	< 0.20	< 0.20	< 0.20	< 0.20	< 0.67		< 0.67	< 0.67	<u>1,000</u>	<u>200</u>
1,1,1-Trichloroethane	< 0.50	< 0.50	< 0.50	< 0.50	< 0.90		< 0.90	< 0.90	<u>200</u>	<u>40</u>
Trichloroethene (TCE)	< 0.20	< 0.20	< 0.20	< 0.20	< 0.48		< 0.48	< 0.48	<u>5</u>	<u>0.5</u>
1,2,4-Trimethylbenzene	< 0.20	< 0.20	< 0.20	< 0.20	< 0.97		< 0.97	< 0.97	<u>480</u>	<u>96</u>
1,3,5-Trimethylbenzene	< 0.20	< 0.20	< 0.20	< 0.20	< 0.83		< 0.83	< 0.83		
Xylene (total)	< 0.50	< 0.50	< 0.50	< 0.50	< 1.8		< 1.8	< 1.8	<u>10,000</u>	<u>1,000</u>

NS = no standards

MTBE = methyl-tert-butyl-ether

Bolded values indicate concentrations above ES.

Underlined values indicate concentrations above PAL.

For a complete list of VOCs and detection limits, see the laboratory report.

NA = Not Analyzed



**TABLE 3  
ANALYTICAL RESULTS - POTABLE WATER SAMPLES FROM DRINKING WATER WELLS  
TWIN LAKES LAUNDRY & DRY CLEANING (TLLDC) (BRRTS #: 02-30-545024)  
111 SOUTH LAKE AVENUE, TWIN LAKES, KENOSHA COUNTY, WISCONSIN**

Sample Name	208 S. Lake Ave.						NR 140 Remedial Action Limits	
Sample Location	Residence, 208 S. Lake Ave.							
Direction from TLLDC (estimated gradient from TLLDC)	Southeast (downgradient)							
Date Sampled	5/25/2007	4/18/2008	10/30/2008	4/30/2009	10/23/2009	4/16/2010		
VOCs (ppb)							ES	PAL
Benzene	< 0.20	< 0.20	< 0.41	< 0.41	< 0.41	< 0.41	5	0.5
Bromodichloromethane	< 0.20	< 0.20	< 0.56	< 0.56	< 0.56	< 0.56	0.6	0.06
Chloroform	< 0.20	< 0.20	< 1.3	< 1.3	< 1.3	< 1.3	6	0.6
Chloromethane	< 0.20	< 0.20	< 0.24	< 0.24	< 0.24	< 0.24	3	0.3
1,1-Dichloroethane	< 0.50	< 0.50	< 0.75	< 0.75	< 0.75	< 0.75	850	85
1,1-Dichloroethene	< 0.50	< 0.50	< 0.57	< 0.57	< 0.57	< 0.57	7	0.7
cis-1,2-Dichloroethene	<u>14</u>	<u>14</u>	< 0.83	<u>14.5</u>	<u>17.5</u>	<u>23.4</u>	70	7
trans-1,2-dichloroethene	< 0.50	< 0.50	< 0.89	< 0.89	< 0.89	< 0.89	100	20
Ethylbenzene	< 0.50	< 0.50	< 0.54	< 0.54	< 0.54	< 0.54	700	140
MTBE	1.8	2.8	4.8	6.5	6.3	5.9	60	12
Naphthalene	< 0.25	< 0.25	< 0.89	< 0.89	< 0.89	< 0.89	40	8
Styrene	< 0.20	< 0.20	< 0.86	< 0.86	< 0.86	< 0.86	100	10
Tetrachloroethene (PCE)	< 0.50	< 0.50	< 0.45	< 0.45	< 0.45	< 0.45	5	0.5
Toluene	< 0.20	< 0.20	< 0.67	< 0.67	< 0.67	< 0.67	1,000	200
1,1,1-Trichloroethane	< 0.50	< 0.50	< 0.90	< 0.90	< 0.90	< 0.90	200	40
Trichloroethene (TCE)	< 0.20	< 0.20	< 0.48	< 0.48	< 0.48	< 0.48	5	0.5
1,2,4-Trimethylbenzene	< 0.20	< 0.20	< 0.97	< 0.97	< 0.97	< 0.97	480	96
1,3,5-Trimethylbenzene	< 0.20	< 0.20	< 0.83	< 0.83	< 0.83	< 0.83		
Xylene (total)	< 0.50	< 0.50	< 1.8	< 1.8	< 1.8	< 1.8	10,000	1,000

NS = no standards

MTBE = methyl-tert-butyl-ether

Bolded values indicate concentrations above ES.

Underlined values indicate concentrations above PAL.

For a complete list of VOCs and detection limits, see the laboratory report.

NA = Not Analyzed

**TABLE 3  
ANALYTICAL RESULTS - POTABLE WATER SAMPLES FROM DRINKING WATER WELLS  
TWIN LAKES LAUNDRY & DRY CLEANING (TLLDC) (BRRTS #: 02-30-545024)  
111 SOUTH LAKE AVENUE, TWIN LAKES, KENOSHA COUNTY, WISCONSIN**

Sample Name	212 S. Lake Ave.						NR 140 Remedial Action Limits	
Sample Location	Residence, 212 S. Lake Ave.							
Direction from TLLDC (estimated gradient from TLLDC)	Southeast (downgradient)							
Date Sampled	12/27/2007	4/18/2008	10/30/2008	4/30/2009	10/23/2009	4/16/2010		
VOCs (ppb)							ES	PAL
Benzene	< 0.20	< 0.20	< 0.41	< 0.41	< 0.41	< 0.41	5	0.5
Bromodichloromethane	< 0.20	< 0.20	< 0.56	< 0.56	< 0.56	< 0.56	0.6	0.06
Chloroform	< 0.20	< 0.20	< 1.3	< 1.3	< 1.3	< 1.3	6	0.6
Chloromethane	< 0.20	< 0.20	< 0.24	< 0.24	< 0.24	< 0.24	3	0.3
1,1-Dichloroethane	< 0.50	< 0.50	< 0.75	< 0.75	< 0.75	< 0.75	850	85
1,1-Dichloroethene	< 0.50	< 0.50	< 0.57	< 0.57	< 0.57	< 0.57	7	0.7
cis-1,2-Dichloroethene	2	2.8	2.9	3.2	3.6	3.9	70	7
trans-1,2-dichloroethene	< 0.50	< 0.50	< 0.89	< 0.89	< 0.89	< 0.89	100	20
Ethylbenzene	< 0.50	< 0.50	< 0.54	< 0.54	< 0.54	< 0.54	700	140
MTBE	< 0.50	0.58	1.5	4.3	6	6.4	60	12
Naphthalene	< 0.25	< 0.25	< 0.89	< 0.89	< 0.89	< 0.89	40	8
Styrene	< 0.20	< 0.20	< 0.86	< 0.86	< 0.86	< 0.86	100	10
Tetrachloroethene (PCE)	< 0.50	< 0.50	< 0.45	< 0.45	< 0.45	< 0.45	5	0.5
Toluene	< 0.20	< 0.20	< 0.67	< 0.67	< 0.67	< 0.67	1,000	200
1,1,1-Trichloroethane	< 0.50	< 0.50	< 0.90	< 0.90	< 0.90	< 0.90	200	40
Trichloroethene (TCE)	< 0.20	< 0.20	< 0.48	< 0.48	< 0.48	< 0.48	5	0.5
1,2,4-Trimethylbenzene	< 0.20	< 0.20	< 0.97	< 0.97	< 0.97	< 0.97	480	96
1,3,5-Trimethylbenzene	< 0.20	< 0.20	< 0.83	< 0.83	< 0.83	< 0.83		
Xylene (total)	< 0.50	< 0.50	< 1.8	< 1.8	< 1.8	< 1.8	10,000	1,000

NS = no standards

MTBE = methyl-tert-butyl-ether

Bolded values indicate concentrations above ES.

Underlined values indicate concentrations above PAL.

For a complete list of VOCs and detection limits, see the laboratory report.

NA = Not Analyzed

**TABLE 3  
ANALYTICAL RESULTS - POTABLE WATER SAMPLES FROM DRINKING WATER WELLS  
TWIN LAKES LAUNDRY & DRY CLEANING (TLLDC) (BRRTS #: 02-30-545024)  
111 SOUTH LAKE AVENUE, TWIN LAKES, KENOSHA COUNTY, WISCONSIN**

Sample Name	216 S. Lake Ave.					Straw Hat	215 S. Lake Ave.	NR 140 Remedial Action Limits	
	Residence, 216 S. Lake Ave.					The Straw Hat, 126 S. Lake Ave.	Law Office, 215 S. Lake Ave.		
Direction from TLLDC (estimated gradient from TLLDC)	Southeast (downgradient)					Southeast (downgradient)	Southeast (downgradient)		
Date Sampled	4/18/2008	10/30/2008	4/30/2009	10/23/2009	4/16/2010	4/30/2009	5/25/2007		
<b>VOCs (ppb)</b>								<i>ES</i>	<i>PAL</i>
Benzene	< 0.20	< 0.41	< 0.41	< 0.41	< 0.41	< 0.41	< 0.20	5	0.5
Bromodichloromethane	< 0.20	< 0.56	< 0.56	< 0.56	< 0.56	< 0.56	< 0.20	0.6	0.06
Chloroform	< 0.20	< 1.3	< 1.3	< 1.3	< 1.3	< 1.3	< 0.20	6	0.6
Chloromethane	< 0.20	< 0.24	< 0.24	< 0.24	< 0.24	< 0.24	< 0.20	3	0.3
1,1-Dichloroethane	< 0.50	< 0.75	< 0.75	< 0.75	< 0.75	< 0.75	< 0.50	850	85
1,1-Dichloroethene	< 0.50	< 0.57	< 0.57	< 0.57	< 0.57	<u>&lt; 0.57</u>	< 0.50	7	<u>0.7</u>
cis-1,2-Dichloroethene	1.4	1.8	2.8	3.5	4.0	<u>24.6</u>	< 0.50	70	<u>7</u>
trans-1,2-dichloroethene	< 0.50	< 0.89	< 0.89	< 0.89	< 0.89	<u>&lt; 0.89</u>	< 0.50	100	20
Ethylbenzene	< 0.50	< 0.54	< 0.54	< 0.54	< 0.54	<u>&lt; 0.54</u>	< 0.50	700	140
MTBE	< 0.50	0.92	2.5	4.6	4.4	<u>1.8</u>	< 0.50	60	12
Naphthalene	< 0.25	< 0.89	< 0.89	< 0.89	< 0.89	<u>&lt; 0.89</u>	< 0.25	40	8
Styrene	< 0.20	< 0.86	< 0.86	< 0.86	< 0.86	< 0.86	< 0.20	100	10
Tetrachloroethene (PCE)	< 0.50	< 0.45	< 0.45	< 0.45	< 0.45	< 0.45	< 0.50	5	0.5
Toluene	< 0.20	< 0.67	< 0.67	< 0.67	< 0.67	< 0.67	< 0.20	1,000	200
1,1,1-Trichloroethane	< 0.50	< 0.90	< 0.90	< 0.90	< 0.90	< 0.90	< 0.50	200	40
Trichloroethene (TCE)	< 0.20	< 0.48	< 0.48	< 0.48	< 0.48	< 0.48	< 0.20	5	0.5
1,2,4-Trimethylbenzene	< 0.20	< 0.97	< 0.97	< 0.97	< 0.97	< 0.97	< 0.20	480	96
1,3,5-Trimethylbenzene	< 0.20	< 0.83	< 0.83	< 0.83	< 0.83	< 0.83	< 0.20		
Xylene (total)	< 0.50	< 1.8	< 1.8	< 1.8	< 1.8	< 1.8	< 0.50	10,000	1,000

NS = no standards

MTBE = methyl-tert-butyl-ether

Bolded values indicate concentrations above ES.

Underlined values indicate concentrations above PAL.

For a complete list of VOCs and detection limits, see the laboratory report.

NA = Not Analyzed