

Hnat, John J - DNR

From: Ken Ebbott <ken.ebbott@sand-creek.com>
Sent: Thursday, November 14, 2019 11:23 AM
To: Hnat, John J - DNR
Subject: FW: Weekly Update Report
Attachments: Fact Sheet Update Nov 13 2019.pdf

John,

Forgot to send you this yesterday.

We will begin digging tomorrow-

Ken

Regards,

Ken Ebbott, PG, CGWP

Senior Project Manager/Senior Geologist

Sand Creek Consultants, Inc. | W5877 Pheasant Lane | Plymouth, WI 53073

main 920.918.9024 | fax 866.608.6473

www.sand-creek.com | ken.ebbott@sand-creek.com

From: Ken Ebbott

Sent: Wednesday, November 13, 2019 7:29 AM

To: Bart Griepentrog (bgriepentrog@villageofshorewood.org) <bgriepentrog@villageofshorewood.org>

Cc: Ken Ebbott (ken.ebbott@sand-creek.com) <ken.ebbott@sand-creek.com>

Subject: Weekly Update Report

Bart,

Attached is the weekly update – I attached my air monitoring readings which show nothing of note. We didn't actually have to do these readings during the demo, but I decided it would be good to establish some baseline values.

We should wrap up the demo of aboveground structures today.

Digging to follow.

Ken

Regards,

Ken Ebbott, PG, CGWP

Senior Project Manager/Senior Geologist

Sand Creek Consultants, Inc. | W5877 Pheasant Lane | Plymouth, WI 53073

main 920.918.9024 | fax 866.608.6473

www.sand-creek.com | ken.ebbott@sand-creek.com

Sand Creek Consultants, Inc. | Environmental and Geological Scientists and Engineers

Solutions in Green Site Remediation, Sustainability, and Phytoremediation since 1995

UPDATED FACT SHEET: Environmental Remediation at the Former Shorewood Queensway Cleaners **Nov 13 2019**

What: Demolition, power line relocation, soil excavation, landfill disposal, backfill, grading, revegetation

Where: 4300 N. Oakland and adjacent 1808 E. Marion Street Parcels – **See Attached Map**

Why: Removal of soil containing dry-cleaning solvent from historic operation of dry cleaner 1960 to 2017

When: Demolition and soil excavation Nov 4 to Dec 6 Estimated. Groundwater monitoring thru 2020

Permits and Approvals

1. WDNR Approved Remedial Action Plan and Use of Soil Mixing Process
2. Shorewood Planning Review and Demolition Permit
3. Landfill Approval to Accept Soil, Concrete

Description

- Power pole relocations (two) - **COMPLETE**
- Temporary 6' high Chain Link Fence - **COMPLETE**
- Demolition of the two structures (4300 Oakland, 1808 E. Marion) – **NEARLY COMPLETE**
- Concrete and asphalt breaking and removal
- Contaminated soil excavation and removal
- Dump truck traffic – removal of concrete and soil, placement of clean backfill. Roughly 100 loads
- Addition of liquid and solid amendments to the soil (Fenton's Reagent and BAM™)
- Temporary placement of treated soil in estimated eight 30 cubic yard drop boxes for short-term storage. Boxes to be covered and labeled with warning signs, then emptied when laboratory results indicate soil can be landfilled (estimated two to three weeks).
- Clean backfill replacement, compaction in lifts, using vibrating rolling compactor
- Clean topsoil at surface
- Grade site to gently slope site to south / west toward streets
- Establish grass vegetation across entire lot

Health and Safety

- Limit site access with fencing
- No Parking North side of Marion Street along Property
- Standard worker safety equipment (steel toe shoes, hard hat, reflective vest, plus protective gloves). Short term use of full face respirator and Tyvek suits when applying chemicals to soil.
- When Excavating / Mixing Soils: Twice daily evaluations of breathing space vapors at four perimeter work zone locations using field meters, with comparison to workplace exposure standards for chemicals of concern
- Contingency Action Plans – if elevated vapor readings at perimeter of work zone, temporarily cease operations. Re-assess readings. Take mitigating actions, (blower / adjust storage box covers) and evaluate if need to delay operations until wind changes to minimize issues.

Communication

- Weekly updates on progress, monitoring data provided to Village – **see attached perimeter air monitoring form – no elevated readings noted during demolition activities**
- 11/5/19 perimeter fence installed
- 11/7/19 Utility disconnect
- 11/12/19 All Utilities relocated
- 11/7 to 11/13 – demolition aboveground structures

Key Contacts and Further Questions?

- A. Ken Ebbott – Project Manager, Sand Creek Consultants – ken.ebbott@sand-creek.com, 920.918.9024
- B. John Hnat – WDNR Environmental Project Manager, John.Hnat@wisconsin.gov 414.263.8644
- C. Bart Griepentrog: Village Shorewood Redevelopment, bgriepentrog@villageofshorewood.org, 414.847.2647

Shorewood Queensway Cleaners Field Measurements as Dig and Treat Soil
4300 N Oakland, 1808 E. Marion Street, Shorewood, WI

11-7 DEMO 1808 BLDG

Date	Time	Location	Rdg Type, Intake Height	Wind Direction, Approx Speed	Air Readings					PCE (Draeger Tube) ppm	Comments
					PID (ppm)	O2 (%)	CO2 %	H2S %	LEL %		
11-7-19	14:40	TURBO BLDG	5.0'	NE 5 MPH	0.0	21.2	0.0	0.0	0.0	NA	PRE DEMO HEAR AND END DAY CLEARANCE BLDG
	14:42	E FACE CENTER	"	"	0.0	21.2	0.0	0.0	0.0	NA	AT SE CORNER 1808 BLDG
	14:44	S CORNER	5.0'	NW 5 MPH	0.0	21.5	0.0	0.0	0.0	NA	
	14:46	WEST SIDE SHED CAN 5'	5'	NW 5 MPH	0.0	21.8	0.0	0.0	0.0	NA	V LIGHT TRAFFIC
	14:48	4 LANE W MAIN	5'	NW 5 MPH	0.0	22.1	0.0	0.0	0.0	NA	
	14:50	INSIDE CLEANERS	4'	0	0.0	22.1	0.0	0.0	0.0	NA	INSIDE CLEANERS AT 0CM
11-8	- DEMO	1808 BLDG	BUILDING								
11-8-19	11:05	SE CORNER	5'	W 5-10 MPH	0.0	21.0	0.0	0.0	0	NA	on sidewalk
	11:10	SW CORNER	5'	"	0.0	21.2	0.0	0.0	0	NA	Sidewalk mod. traffic
	11:12	NW CORNER	5'	"	0.0	21.5	0.0	0.0	0	NA	Sidewalk light traffic
	11:15	NE CORNER	5'	"	0.0	21.8	0.0	0.0	0	NA	
	11:17	By Drycleaner	both days 2'	NW	0.4	21.8	0.0	0.0	0	NA	Small generator Exhaust 2' from
	14:00	SE	5'	SW 5 MPH	0.0	21.2	0.0	0.0	0	NA	LOADING 1808 BLDG
		SW	2'	"	0.0	21.5	0.0	0.0	0	NA	LOADING
		NW	5'	"	0.0	21.5	0.0	0.0	0	NA	
		By Drycleaner	5'	"	0.0	21.6	0.0	0.0	0	NA	Exhaust of
	14:15	NE CORNER	5'	"	0.0	21.6	0.0	0.0	0	NA	LOADING 1808 BLDG
11-9	WEEKEND - NO ACTIVITY										
11-10	WEEKEND - NO ACTIVITY										
11-11	SNOW - NO ACTIVITY EXCEPT SAMPLE WELLS MW-1,2,3,6										
11-12	DEMO 4300 OAKLAND										
11-12	10:00	NW CORNER	5'	10 MPH NW	0.0	21.2	0.0	0.0	0	NA	on sidewalk
	10:03	SW CORNER	5'	"	0.0	21.2	0.0	0.0	0	NA	Sidewalk
	10:05	E CENTER	5'	"	0.0	21.5	0.0	0.0	0	NA	1814 NW SE SW CORNER
	10:07	N CENTER	5'	"	0.0	21.8	0.0	0.0	0	NA	E FACE LINE
	13:45	NW	5'	"	0.0	20.9	0.0	0.0	0	NA	
	13:47	SW	5'	"	0.0	21.0	0.0	0.0	0	NA	
	13:49	FRONT DOOR DRYCLEANER	5'	"	0.0	21.0	0.0	0.0	0	NA	
	13:51	E CENTER	5'	"	0.0	21.2	0.0	0.0	0	NA	

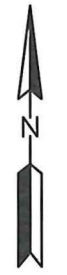
- 1: PID 10.6 eV Lamp,
- 2: Four Gas Meter

3: If PID Elevated above 10 ppm over background, Test with Draeger Tube

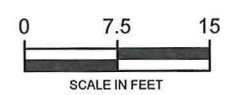
13:55 NW CORNER 5' " 0.0 21.5 0.0 0.0 0 NA



Environmental and Geological
Scientists and Engineers



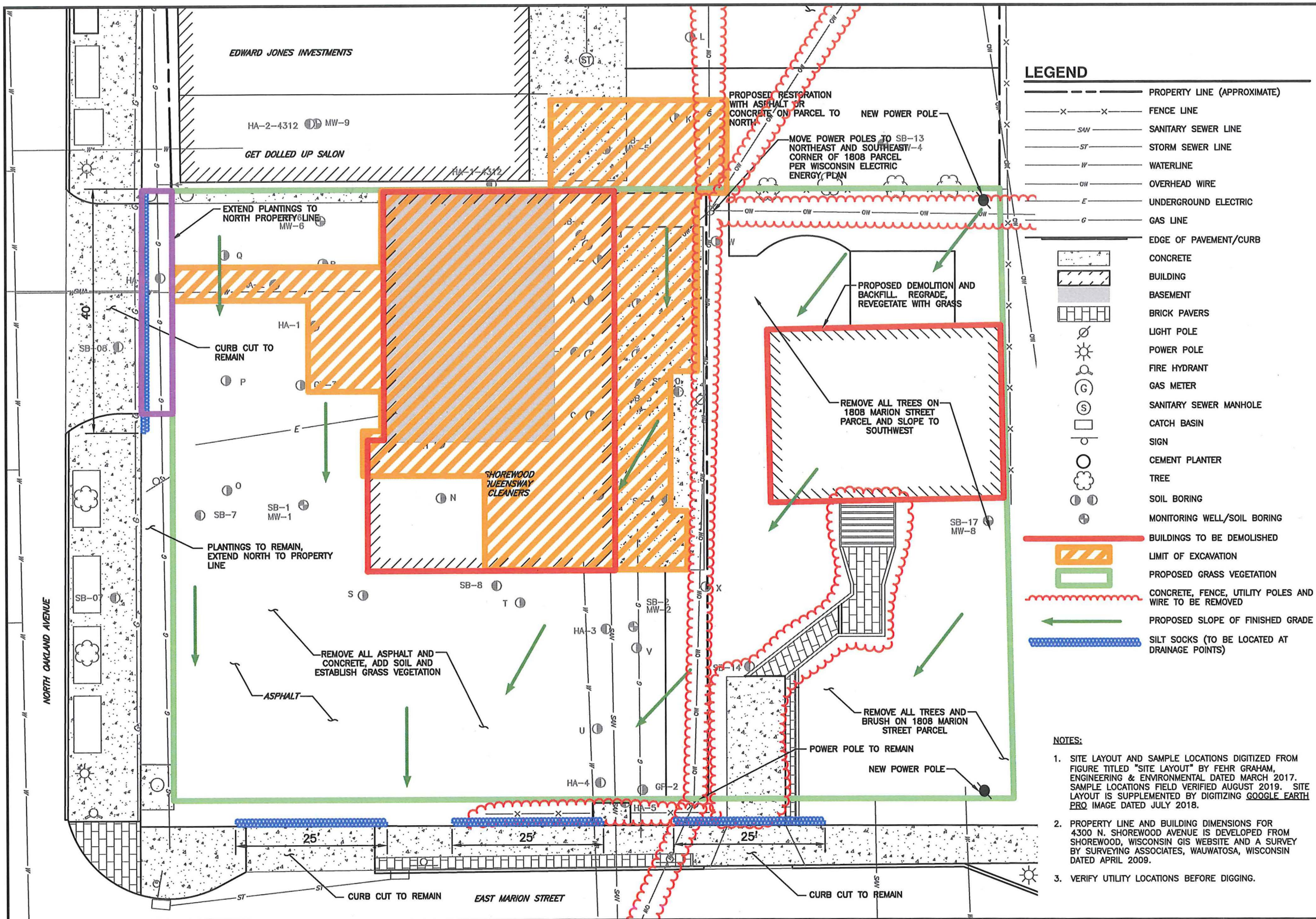
DEMOLITION PLAN AND EROSION CONTROL PLAN



**SHOREWOOD
QUEENSWAY CLEANERS
4300 N. OAKLAND AVE.
SHOREWOOD, WI**

DATE: SEPTEMBER 2019
SCALE: 1"=15'
DRAWN BY: KAP
APPROVED: KE

FIGURE A



LEGEND

- PROPERTY LINE (APPROXIMATE)
- X-X- FENCE LINE
- SAW- SANITARY SEWER LINE
- ST- STORM SEWER LINE
- W- WATERLINE
- OW- OVERHEAD WIRE
- E- UNDERGROUND ELECTRIC
- G- GAS LINE
- EDGE OF PAVEMENT/CURB
- CONCRETE
- BUILDING
- BASEMENT
- BRICK PAVERS
- LIGHT POLE
- POWER POLE
- FIRE HYDRANT
- GAS METER
- SANITARY SEWER MANHOLE
- CATCH BASIN
- SIGN
- CEMENT PLANTER
- TREE
- SOIL BORING
- MONITORING WELL/SOIL BORING
- BUILDINGS TO BE DEMOLISHED
- LIMIT OF EXCAVATION
- PROPOSED GRASS VEGETATION
- CONCRETE, FENCE, UTILITY POLES AND WIRE TO BE REMOVED
- PROPOSED SLOPE OF FINISHED GRADE
- SILT SOCKS (TO BE LOCATED AT DRAINAGE POINTS)

NOTES:

1. SITE LAYOUT AND SAMPLE LOCATIONS DIGITIZED FROM FIGURE TITLED "SITE LAYOUT" BY FEHR GRAHAM, ENGINEERING & ENVIRONMENTAL DATED MARCH 2017. SAMPLE LOCATIONS FIELD VERIFIED AUGUST 2019. SITE LAYOUT IS SUPPLEMENTED BY DIGITIZING GOOGLE EARTH PRO IMAGE DATED JULY 2018.
2. PROPERTY LINE AND BUILDING DIMENSIONS FOR 4300 N. SHOREWOOD AVENUE IS DEVELOPED FROM SHOREWOOD, WISCONSIN GIS WEBSITE AND A SURVEY BY SURVEYING ASSOCIATES, WAUWATOSA, WISCONSIN DATED APRIL 2009.
3. VERIFY UTILITY LOCATIONS BEFORE DIGGING.