



RECEIVED

MAY 27 2014

BY: JZ

May 20, 2014

Richard Paul, Jr., Public Works Director
Village of Elm Grove
13600 Juneau Boulevard
Elm Grove, Wisconsin 53122-1679

Subject: Environmental Investigation Sampling Results
BRRTS#: 02-68-552102

Dear Mr. Paul:

In accordance with the executed Agreement to Provide Access for Sampling Activities, and in accordance with Wisconsin Department of Natural Resources (WDNR) regulation NR 716.14, Environmental Forensic Investigations, Inc. (EnviroForensics) is providing the results of groundwater samples collected from Village of Elm Grove property (monitoring wells (MW-8 and MW-9), that were collected May 8, 2014. The attached Site Layout Map shows the locations of the wells.

The sampling activities are part of an environmental investigation being performed for the One Hour Martinizing facility located at 13405 Watertown Plank Road, Elm Grove, Wisconsin as required by the WDNR pursuant to the authority granted to it under State and Federal law. The chemicals of concern for the investigation are the chlorinated dry cleaning solvent tetrachloroethylene (PCE) and associated chlorinated compounds resulting from the natural breakdown in the subsurface of PCE including trichloroethylene (TCE), dichloroethylene (DCE), and vinyl chloride.

The Responsible Party is:

Mr. Brian Cass
OHM Holdings, Inc.
W229 N2494 Hwy F
Waukesha, WI 53186
Telephone: 262-521-9710

Document: 6142-0308
Environmental Forensic Investigations, Inc.
N16 W23390 Stone Ridge Dr, Suite G, Waukesha, WI 53188
Phone: 414-982-3988 • Fax 317-972-7875



Sampling Results

Copies of the pertinent analytical results sheets and summary tables comparing detected concentrations of chlorinated solvents to their associated regulatory standards have been attached. The groundwater samples collected from wells MW-8 and MW-9 did not contain concentrations of chlorinated compounds above laboratory detection limits.

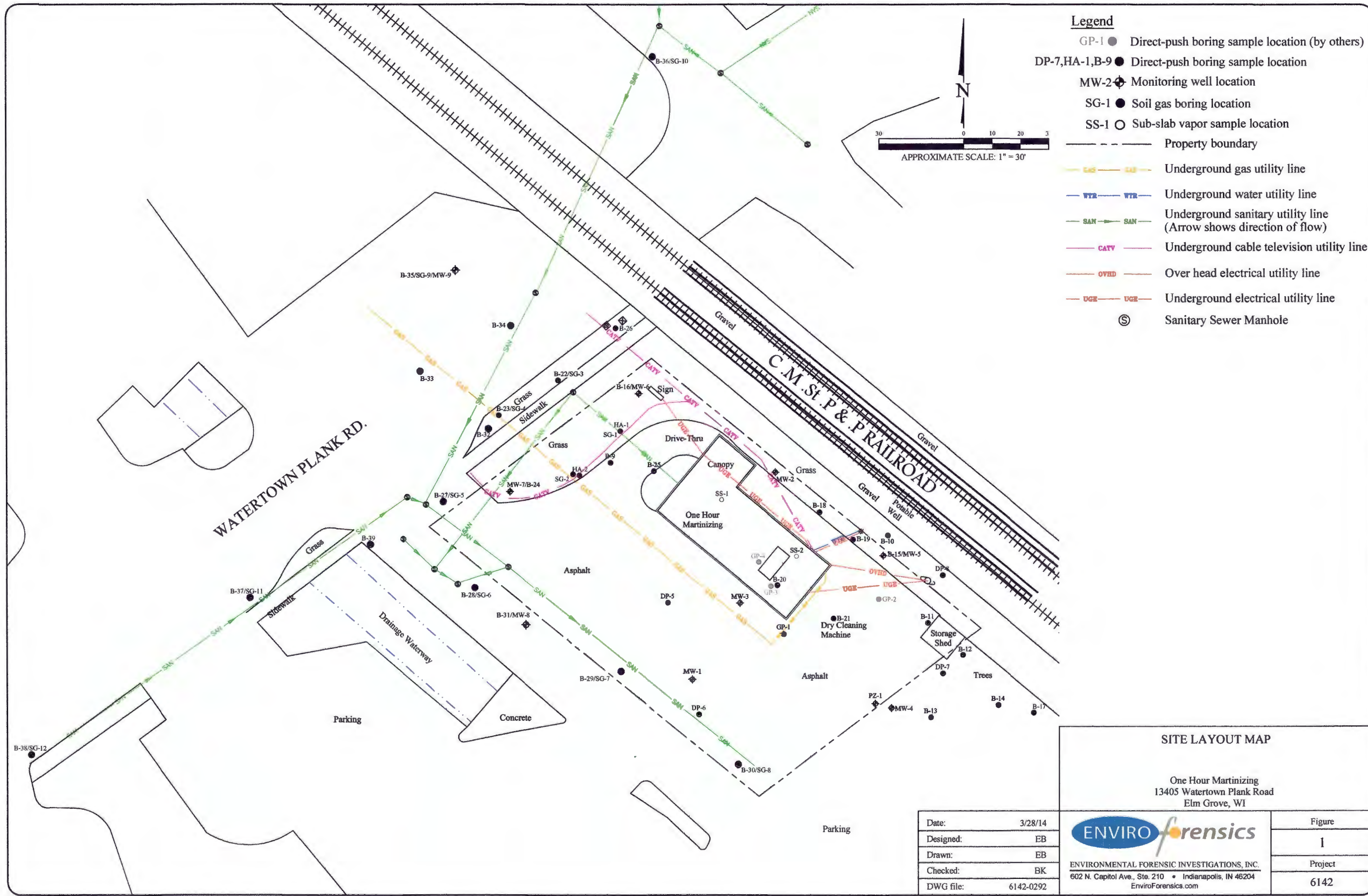
We will contact you to discuss additional investigation work, if any. If you have any questions or concerns, please contact me at 414-982-3988 or by email at wfassbender@enviroforensics.com. The WDNR project manager, Mr. Jim Delwiche, can be reached at 262-574-4125. We greatly appreciate your help and patience with this matter.

Sincerely,
Environmental Forensic Investigations, Inc.

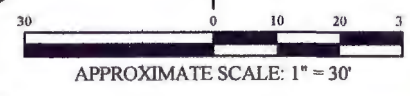
Wayne P. Fassbender, PG, PMP
Sr. Project Manager

Attachments: Figure showing locations of monitoring wells
Groundwater Results Summary Table
Analytical Laboratory Report

Copy: Ted Warpinski, Friebert, Finerty & St. John, S.C. (via email)
Jim Delwiche, Wisconsin Department of Natural Resources
Brian Cass, OHM Holdings, LLC (via email)



- Legend**
- GP-1 ● Direct-push boring sample location (by others)
 - DP-7,HA-1,B-9 ● Direct-push boring sample location
 - MW-2 ⊕ Monitoring well location
 - SG-1 ● Soil gas boring location
 - SS-1 ○ Sub-slab vapor sample location
 - Property boundary
 - Gas --- Gas --- Underground gas utility line
 - WTR --- WTR --- Underground water utility line
 - SAN --- SAN --- Underground sanitary utility line (Arrow shows direction of flow)
 - CATV --- CATV --- Underground cable television utility line
 - OVED --- OVED --- Over head electrical utility line
 - UGE --- UGE --- Underground electrical utility line
 - Ⓢ Sanitary Sewer Manhole



SITE LAYOUT MAP

One Hour Martinizing
13405 Watertown Plank Road
Elm Grove, WI

Date:	3/28/14
Designed:	EB
Drawn:	EB
Checked:	BK
DWG file:	6142-0292

ENVIRONMENTAL FORENSIC INVESTIGATIONS, INC.
602 N. Capitol Ave., Ste. 210 • Indianapolis, IN 46204
EnviroForensics.com

Figure	1
Project	6142

TABLE 6
SUMMARY OF GROUNDWATER MONITORING WELL SAMPLE ANALYTICAL RESULTS
(detected compounds, only)
 One Hour Martinizing
 Elm Grove, Wisconsin

Boring Identification	Date Sampled	Tetrachloroethene	Trichloroethene	cis-1,2-Dichloroethene	trans-1,2-Dichloroethene	Vinyl Chloride	Benzene	Naphthalene	1,2,4-Trimethylbenzene
Enforcement Standard		5	5	70	100	0.2	5	100	480
Preventive Action Limit		0.5	0.5	7	20	0.02	0.5	10	96
MW-8	12/6/2013	<0.33	<0.33	<0.38	<0.35	<0.18	<0.24	<1.7	<2.2
	2/28/2014	<0.33	<0.33	<0.38	<0.35	<0.18	<0.24	<1.7	<2.2
	5/8/2014	<0.33	<0.33	<0.38	<0.35	<0.18	<0.24	<1.7	<2.2
MW-9	12/6/2013	<0.33	<0.33	<0.38	<0.35	<0.18	<0.24	<1.7	<2.2
	2/28/2014	<0.33	<0.33	<0.38	<0.35	<0.18	<0.24	<1.7	<2.2
	5/8/2014	<0.33	<0.33	<0.38	<0.35	<0.18	<0.24	<1.7	<2.2

Notes:

All concentrations reported in units of micrograms per liter (ug/l)

Samples analyzed using EPA SW-846 Method 8260

Bolded and Shaded values exceed the Public Health Enforcement Standard

Bolded values exceed the Public Health Preventive Action Limit

NS--Could not sample well due to winter snow and ice conditions

J = Analyte concentration detected between the laboratory Reporting Limit and the laboratory Method Detection Limit

Project Name OHM ELM GROVE
 Project # 6142

Invoice # E26966

Lab Code 5026966H
 Sample ID 6142 MW-8
 Sample Matrix Water
 Sample Date 5/8/2014

	Result	Unit	LOD	LOQ	Dil	Method	Ext Date	Run Date	Analyst	Code
Organic										
VOC's										
Benzene	< 0.24	ug/l	0.24	0.77	1	8260B		5/15/2014	CJR	1
Bromobenzene	< 0.32	ug/l	0.32	1	1	8260B		5/15/2014	CJR	1
Bromodichloromethane	< 0.37	ug/l	0.37	1.2	1	8260B		5/15/2014	CJR	1
Bromoform	< 0.35	ug/l	0.35	1.1	1	8260B		5/15/2014	CJR	1
tert-Butylbenzene	< 0.36	ug/l	0.36	1.2	1	8260B		5/15/2014	CJR	1
sec-Butylbenzene	< 0.33	ug/l	0.33	1	1	8260B		5/15/2014	CJR	1
n-Butylbenzene	< 0.35	ug/l	0.35	1.1	1	8260B		5/15/2014	CJR	1
Carbon Tetrachloride	< 0.33	ug/l	0.33	1.1	1	8260B		5/15/2014	CJR	1
Chlorobenzene	< 0.24	ug/l	0.24	0.77	1	8260B		5/15/2014	CJR	1
Chloroethane	< 0.63	ug/l	0.63	2	1	8260B		5/15/2014	CJR	1
Chloroform	< 0.28	ug/l	0.28	0.88	1	8260B		5/15/2014	CJR	1
Chloromethane	< 0.81	ug/l	0.81	2.6	1	8260B		5/15/2014	CJR	1
2-Chlorotoluene	< 0.21	ug/l	0.21	0.66	1	8260B		5/15/2014	CJR	1
4-Chlorotoluene	< 0.21	ug/l	0.21	0.68	1	8260B		5/15/2014	CJR	1
1,2-Dibromo-3-chloropropane	< 0.88	ug/l	0.88	2.8	1	8260B		5/15/2014	CJR	1
Dibromochloromethane	< 0.22	ug/l	0.22	0.7	1	8260B		5/15/2014	CJR	1
1,4-Dichlorobenzene	< 0.3	ug/l	0.3	0.96	1	8260B		5/15/2014	CJR	1
1,3-Dichlorobenzene	< 0.28	ug/l	0.28	0.89	1	8260B		5/15/2014	CJR	1
1,2-Dichlorobenzene	< 0.36	ug/l	0.36	1.2	1	8260B		5/15/2014	CJR	1
Dichlorodifluoromethane	< 0.44	ug/l	0.44	1.4	1	8260B		5/15/2014	CJR	1
1,2-Dichloroethane	< 0.41	ug/l	0.41	1.3	1	8260B		5/15/2014	CJR	1
1,1-Dichloroethane	< 0.3	ug/l	0.3	0.97	1	8260B		5/15/2014	CJR	1
1,1-Dichloroethene	< 0.4	ug/l	0.4	1.3	1	8260B		5/15/2014	CJR	1
cis-1,2-Dichloroethene	< 0.38	ug/l	0.38	1.2	1	8260B		5/15/2014	CJR	1
trans-1,2-Dichloroethene	< 0.35	ug/l	0.35	1.1	1	8260B		5/15/2014	CJR	1
1,2-Dichloropropane	< 0.32	ug/l	0.32	1	1	8260B		5/15/2014	CJR	1
2,2-Dichloropropane	< 0.36	ug/l	0.36	1.2	1	8260B		5/15/2014	CJR	4
1,3-Dichloropropane	< 0.33	ug/l	0.33	1	1	8260B		5/15/2014	CJR	1
Di-isopropyl ether	< 0.23	ug/l	0.23	0.73	1	8260B		5/15/2014	CJR	1
EDB (1,2-Dibromoethane)	< 0.44	ug/l	0.44	1.4	1	8260B		5/15/2014	CJR	1
Ethylbenzene	< 0.55	ug/l	0.55	1.7	1	8260B		5/15/2014	CJR	1
Hexachlorobutadiene	< 1.5	ug/l	1.5	4.8	1	8260B		5/15/2014	CJR	1
Isopropylbenzene	< 0.3	ug/l	0.3	0.96	1	8260B		5/15/2014	CJR	1
p-Isopropyltoluene	< 0.31	ug/l	0.31	0.98	1	8260B		5/15/2014	CJR	1
Methylene chloride	< 0.5	ug/l	0.5	1.6	1	8260B		5/15/2014	CJR	1
Methyl tert-butyl ether (MTBE)	< 0.23	ug/l	0.23	0.74	1	8260B		5/15/2014	CJR	1
Naphthalene	< 1.7	ug/l	1.7	5.5	1	8260B		5/15/2014	CJR	1
n-Propylbenzene	< 0.25	ug/l	0.25	0.81	1	8260B		5/15/2014	CJR	1
1,1,2,2-Tetrachloroethane	< 0.45	ug/l	0.45	1.4	1	8260B		5/15/2014	CJR	1
1,1,1,2-Tetrachloroethane	< 0.33	ug/l	0.33	1.1	1	8260B		5/15/2014	CJR	1
Tetrachloroethene	< 0.33	ug/l	0.33	1.1	1	8260B		5/15/2014	CJR	1
Toluene	< 0.69	ug/l	0.69	2.2	1	8260B		5/15/2014	CJR	1
1,2,4-Trichlorobenzene	< 0.98	ug/l	0.98	3.1	1	8260B		5/15/2014	CJR	1
1,2,3-Trichlorobenzene	< 1.8	ug/l	1.8	5.8	1	8260B		5/15/2014	CJR	1
1,1,1-Trichloroethane	< 0.33	ug/l	0.33	1	1	8260B		5/15/2014	CJR	1
1,1,2-Trichloroethane	< 0.34	ug/l	0.34	1.1	1	8260B		5/15/2014	CJR	1
Trichloroethene (TCE)	< 0.33	ug/l	0.33	1	1	8260B		5/15/2014	CJR	1
Trichlorofluoromethane	< 0.71	ug/l	0.71	2.3	1	8260B		5/15/2014	CJR	1
1,2,4-Trimethylbenzene	< 2.2	ug/l	2.2	6.9	1	8260B		5/15/2014	CJR	1
1,3,5-Trimethylbenzene	< 1.4	ug/l	1.4	4.5	1	8260B		5/15/2014	CJR	1
Vinyl Chloride	< 0.18	ug/l	0.18	0.57	1	8260B		5/15/2014	CJR	1
m&p-Xylene	< 0.69	ug/l	0.69	2.2	1	8260B		5/15/2014	CJR	1
o-Xylene	< 0.63	ug/l	0.63	2	1	8260B		5/15/2014	CJR	1
SUR - 1,2-Dichloroethane-d4	109	REC %			1	8260B		5/15/2014	CJR	1
SUR - 4-Bromofluorobenzene	100	REC %			1	8260B		5/15/2014	CJR	1
SUR - Dibromofluoromethane	95	REC %			1	8260B		5/15/2014	CJR	1
SUR - Toluene-d8	93	REC %			1	8260B		5/15/2014	CJR	1

Project Name OHM ELM GROVE
 Project # 6142

Invoice # E26966

Lab Code 50269661
 Sample ID 6142 MW-9
 Sample Matrix Water
 Sample Date 5/8/2014

	Result	Unit	LOD	LOQ	Dil	Method	Ext Date	Run Date	Analyst	Code
Organic										
VOC's										
Benzene	< 0.24	ug/l	0.24	0.77	1	8260B		5/15/2014	CJR	1
Bromobenzene	< 0.32	ug/l	0.32	1	1	8260B		5/15/2014	CJR	1
Bromodichloromethane	< 0.37	ug/l	0.37	1.2	1	8260B		5/15/2014	CJR	1
Bromoform	< 0.35	ug/l	0.35	1.1	1	8260B		5/15/2014	CJR	1
tert-Butylbenzene	< 0.36	ug/l	0.36	1.2	1	8260B		5/15/2014	CJR	1
sec-Butylbenzene	< 0.33	ug/l	0.33	1	1	8260B		5/15/2014	CJR	1
n-Butylbenzene	< 0.35	ug/l	0.35	1.1	1	8260B		5/15/2014	CJR	1
Carbon Tetrachloride	< 0.33	ug/l	0.33	1.1	1	8260B		5/15/2014	CJR	1
Chlorobenzene	< 0.24	ug/l	0.24	0.77	1	8260B		5/15/2014	CJR	1
Chloroethane	< 0.63	ug/l	0.63	2	1	8260B		5/15/2014	CJR	1
Chloroform	< 0.28	ug/l	0.28	0.88	1	8260B		5/15/2014	CJR	1
Chloromethane	< 0.81	ug/l	0.81	2.6	1	8260B		5/15/2014	CJR	1
2-Chlorotoluene	< 0.21	ug/l	0.21	0.66	1	8260B		5/15/2014	CJR	1
4-Chlorotoluene	< 0.21	ug/l	0.21	0.68	1	8260B		5/15/2014	CJR	1
1,2-Dibromo-3-chloropropane	< 0.88	ug/l	0.88	2.8	1	8260B		5/15/2014	CJR	1
Dibromochloromethane	< 0.22	ug/l	0.22	0.7	1	8260B		5/15/2014	CJR	1
1,4-Dichlorobenzene	< 0.3	ug/l	0.3	0.96	1	8260B		5/15/2014	CJR	1
1,3-Dichlorobenzene	< 0.28	ug/l	0.28	0.89	1	8260B		5/15/2014	CJR	1
1,2-Dichlorobenzene	< 0.36	ug/l	0.36	1.2	1	8260B		5/15/2014	CJR	1
Dichlorodifluoromethane	< 0.44	ug/l	0.44	1.4	1	8260B		5/15/2014	CJR	1
1,2-Dichloroethane	< 0.41	ug/l	0.41	1.3	1	8260B		5/15/2014	CJR	1
1,1-Dichloroethane	< 0.3	ug/l	0.3	0.97	1	8260B		5/15/2014	CJR	1
1,1-Dichloroethene	< 0.4	ug/l	0.4	1.3	1	8260B		5/15/2014	CJR	1
cis-1,2-Dichloroethene	< 0.38	ug/l	0.38	1.2	1	8260B		5/15/2014	CJR	1
trans-1,2-Dichloroethene	< 0.35	ug/l	0.35	1.1	1	8260B		5/15/2014	CJR	1
1,2-Dichloropropane	< 0.32	ug/l	0.32	1	1	8260B		5/15/2014	CJR	1
2,2-Dichloropropane	< 0.36	ug/l	0.36	1.2	1	8260B		5/15/2014	CJR	4
1,3-Dichloropropane	< 0.33	ug/l	0.33	1	1	8260B		5/15/2014	CJR	1
Di-isopropyl ether	< 0.23	ug/l	0.23	0.73	1	8260B		5/15/2014	CJR	1
EDB (1,2-Dibromoethane)	< 0.44	ug/l	0.44	1.4	1	8260B		5/15/2014	CJR	1
Ethylbenzene	< 0.55	ug/l	0.55	1.7	1	8260B		5/15/2014	CJR	1
Hexachlorobutadiene	< 1.5	ug/l	1.5	4.8	1	8260B		5/15/2014	CJR	1
Isopropylbenzene	< 0.3	ug/l	0.3	0.96	1	8260B		5/15/2014	CJR	1
p-Isopropyltoluene	< 0.31	ug/l	0.31	0.98	1	8260B		5/15/2014	CJR	1
Methylene chloride	< 0.5	ug/l	0.5	1.6	1	8260B		5/15/2014	CJR	1
Methyl tert-butyl ether (MTBE)	< 0.23	ug/l	0.23	0.74	1	8260B		5/15/2014	CJR	1
Naphthalene	< 1.7	ug/l	1.7	5.5	1	8260B		5/15/2014	CJR	1
n-Propylbenzene	< 0.25	ug/l	0.25	0.81	1	8260B		5/15/2014	CJR	1
1,1,2,2-Tetrachloroethane	< 0.45	ug/l	0.45	1.4	1	8260B		5/15/2014	CJR	1
1,1,1,2-Tetrachloroethane	< 0.33	ug/l	0.33	1.1	1	8260B		5/15/2014	CJR	1
Tetrachloroethene	< 0.33	ug/l	0.33	1.1	1	8260B		5/15/2014	CJR	1
Toluene	< 0.69	ug/l	0.69	2.2	1	8260B		5/15/2014	CJR	1
1,2,4-Trichlorobenzene	< 0.98	ug/l	0.98	3.1	1	8260B		5/15/2014	CJR	1
1,2,3-Trichlorobenzene	< 1.8	ug/l	1.8	5.8	1	8260B		5/15/2014	CJR	1
1,1,1-Trichloroethane	< 0.33	ug/l	0.33	1	1	8260B		5/15/2014	CJR	1
1,1,2-Trichloroethane	< 0.34	ug/l	0.34	1.1	1	8260B		5/15/2014	CJR	1
Trichloroethene (TCE)	< 0.33	ug/l	0.33	1	1	8260B		5/15/2014	CJR	1
Trichlorofluoromethane	< 0.71	ug/l	0.71	2.3	1	8260B		5/15/2014	CJR	1
1,2,4-Trimethylbenzene	< 2.2	ug/l	2.2	6.9	1	8260B		5/15/2014	CJR	1
1,3,5-Trimethylbenzene	< 1.4	ug/l	1.4	4.5	1	8260B		5/15/2014	CJR	1
Vinyl Chloride	< 0.18	ug/l	0.18	0.57	1	8260B		5/15/2014	CJR	1
m&p-Xylene	< 0.69	ug/l	0.69	2.2	1	8260B		5/15/2014	CJR	1
o-Xylene	< 0.63	ug/l	0.63	2	1	8260B		5/15/2014	CJR	1
SUR - 1,2-Dichloroethane-d4	95	REC %			1	8260B		5/15/2014	CJR	1
SUR - 4-Bromofluorobenzene	97	REC %			1	8260B		5/15/2014	CJR	1
SUR - Dibromofluoromethane	91	REC %			1	8260B		5/15/2014	CJR	1
SUR - Toluene-d8	93	REC %			1	8260B		5/15/2014	CJR	1

