

From: Dave Lennon <dlennon@keyengineering.com>
Sent: Wednesday, December 7, 2016 4:54 PM
To: Ryan, Nancy D - DNR
Subject: Sub-slab Locations at Giovanni's
Attachments: 20161207_163330.pdf; Vapor Data Table.pdf

Nancy,

The attached figure represents sub-slab sample locations VS-1,2,3 collected in Giovanni's. As I recall the vapor results decreased with distance from VS-1 through VS-3.

-----Original Message-----

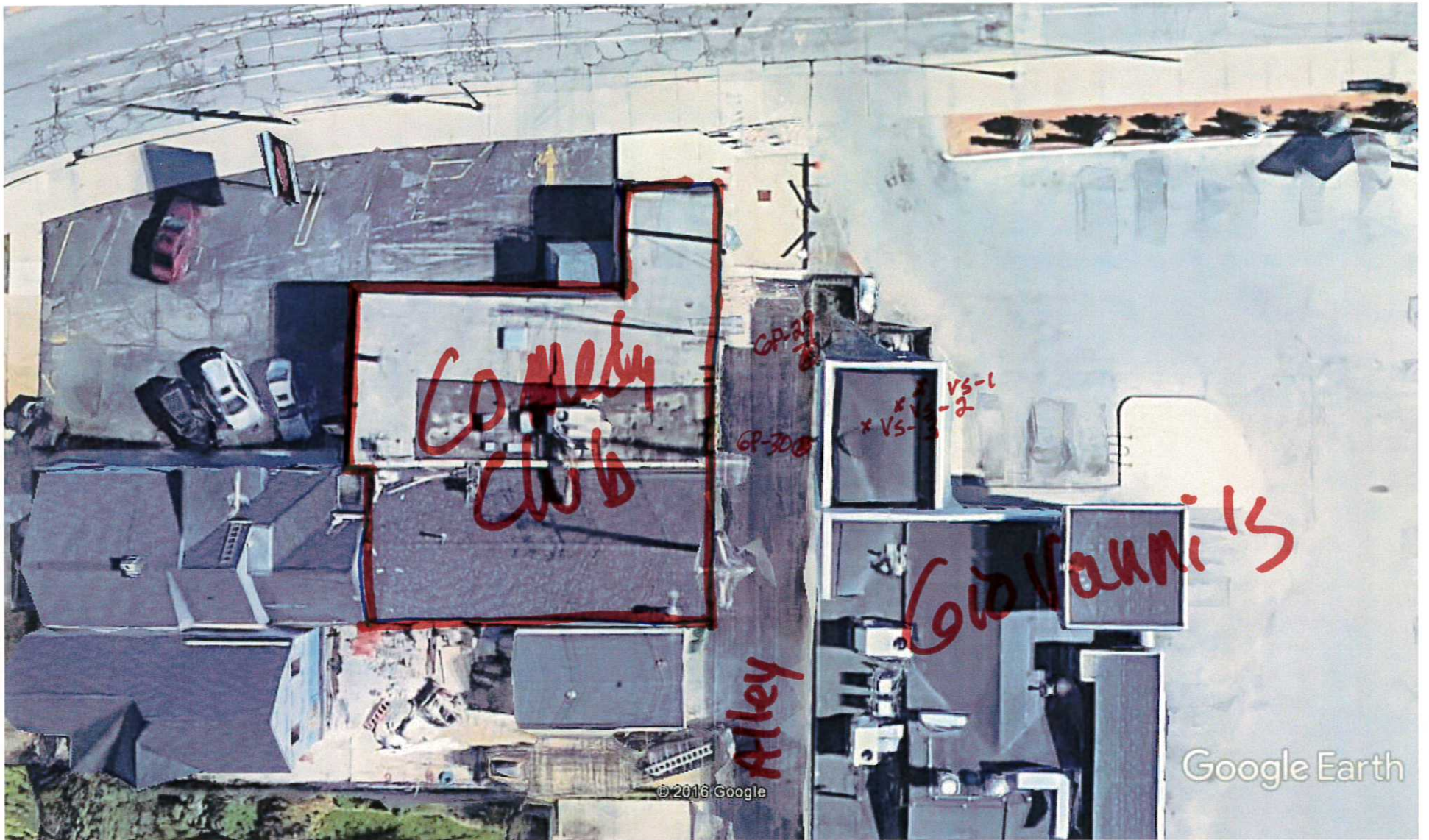
From: scanner On Behalf Of scan@
Sent: Wednesday, December 07, 2016 3:34 PM
To: Dave Lennon <dlennon@keyengineering.com>
Subject: Scanned image from MX5141N

Reply to: scan@keyengineering.com <scan@keyengineering.com> Device Name: MX5141N Device
Model: MX-5141N
Location: Key Engineering

File Format: PDF (High)
Resolution: 200dpi x 200dpi

Attached file is scanned image in PDF format.
Use Acrobat(R)Reader(R) or Adobe(R)Reader(R) of Adobe Systems Incorporated to view the document.
Adobe(R)Reader(R) can be downloaded from the following URL:
Adobe, the Adobe logo, Acrobat, the Adobe PDF logo, and Reader are registered trademarks or
trademarks of Adobe Systems Incorporated in the United States and other countries.

<http://www.adobe.com/>



Google Earth

feet
meters



Representation of sub-slab Vapor Samples VS-1, 2, 3 @ Gioianni's relative to location in building and alley sample locations GP-29 & GP-30

Table 1

**Vapor Analytical Data
Small Commercial Building Non-Residential Land Use
Former Giovanni's Restaurant
1681-1683 N. Van Buren Street
Milwaukee, WI**

Sample Type - Ambient Air (AA)/Sub-Slab (SS)	AA	SS	SS	SS	Target Sub-Slab Vapor Risk Screening Levels	Target Indoor Air Vapor Action Levels
Sample I.D.	AS-1	VS-1	VS-2	VS-3		
Location in Building/Property	North end	North end	North end	North end		
Tracer Gas - Present (P) Not Present (NP)	NP	NP	NP	NP		
Laboratory	Pace	Pace	Pace	Pace		
Duration of Sample Collection (hrs)	24	0.5	0.5	0.5		
Date Collected	11/19/14	10/20/14	11/17/15	11/17/15		
VOCs (ug/m³) by EPA Method TO-15						
Acetone	23,100	---	---	---	---	---
cis-1,2-Dichloroethene	<0.72	17.2	4.3	<0.43	---	---
trans-1,2-Dichloroethene	<0.60	9.0	1.9	<0.67	---	---
Dichlorodifluoromethane	3.2 J	---	---	---	4,400	440
Ethanol	1,510	---	---	---	---	---
Ethyl acetate	1,980	---	---	---	---	---
n-Heptane	6.5 J	---	---	---	---	---
n-Hexane	8.1	---	---	---	---	---
Methylene Chloride	23.2	---	---	---	26,000	2,600
4-Methyl-2-pentanone	75.4	---	---	---	---	---
Tetrachloroethylene	15.8	322	347	147	1,800	180
Toluene	7.9	---	---	---	220,000	22,000
Trichloroethylene	<0.65	117	44	1.4	88	8.8
Vinyl chloride	<0.34	<0.34	<0.34	<0.34	280	28

Bold values exceed target levels

Vapor Action Levels based on USEPA Regional Screening Levels (RSLs), May 2014

ug/m³ = micrograms per cubic meter

--- Not analyzed or No Target Indoor Concentration Listed

Sub-Slab samples collected using the helium shroud and shut-in test method

Helium meter used to detect tracer gas during sub-slab sample collection procedure

All vapor samples collected into 6 liter Summa canisters