



September 15, 2016

Mr. Doug Cieslak
Wisconsin Department of Natural Resources
9531 Rayne Rd, Suite 4
Madison, WI 53707-7921

**Re: Groundwater Elevation Contour Maps
Martino's Master Dry Cleaners
7513 41st Avenue
Kenosha, Wisconsin 53142
BRRTS# 02-30-552188**

Dear Mr. Cieslak:

During our telephone conversation and review of previous documentation on August 3, 2016, errors were discovered on several groundwater contour maps for the subject site. We subsequently reviewed the elevation data and identified the source of the errors. Revised contour maps are enclosed. The indicated direction of groundwater flow at the site has not changed.

Sincerely,
Environmental Forensic Investigations, Inc.

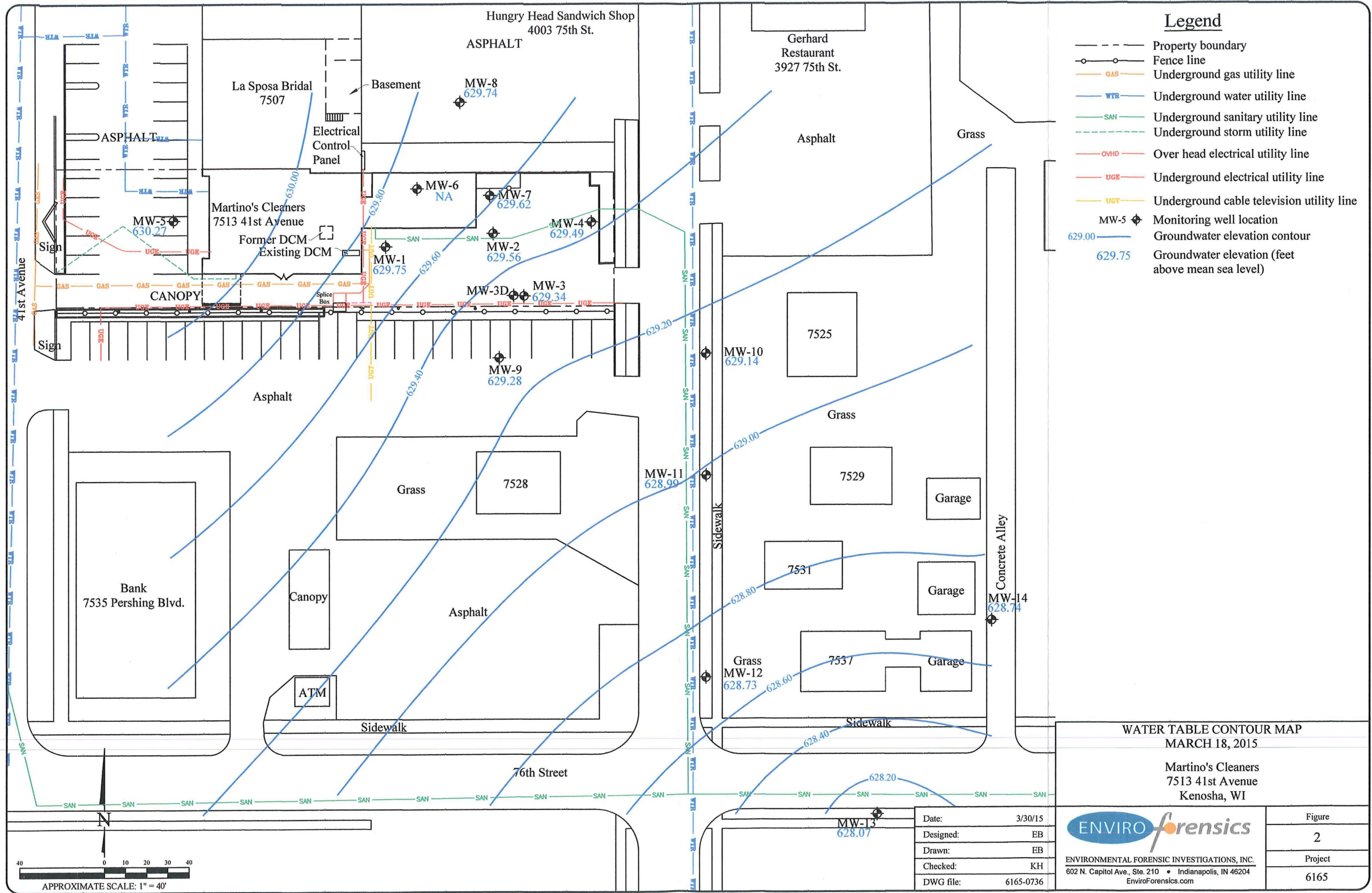
Handwritten signature of Wayne Fassbender in cursive.

Wayne Fassbender, PG, PMP
Senior Project Manager

Handwritten signature of Brian Kappen in cursive.

Brian Kappen, PG
Project Manager

enclosures



Legend

- Property boundary
- o-o- Fence line
- GAS- Underground gas utility line
- WTR- Underground water utility line
- SAN- Underground sanitary utility line
- - - - - Underground storm utility line
- OVHD- Over head electrical utility line
- UGE- Underground electrical utility line
- UCT- Underground cable television utility line
- MW-5 Monitoring well location
- 629.00 Groundwater elevation contour
- 629.75 Groundwater elevation (feet above mean sea level)

**WATER TABLE CONTOUR MAP
MARCH 18, 2015**

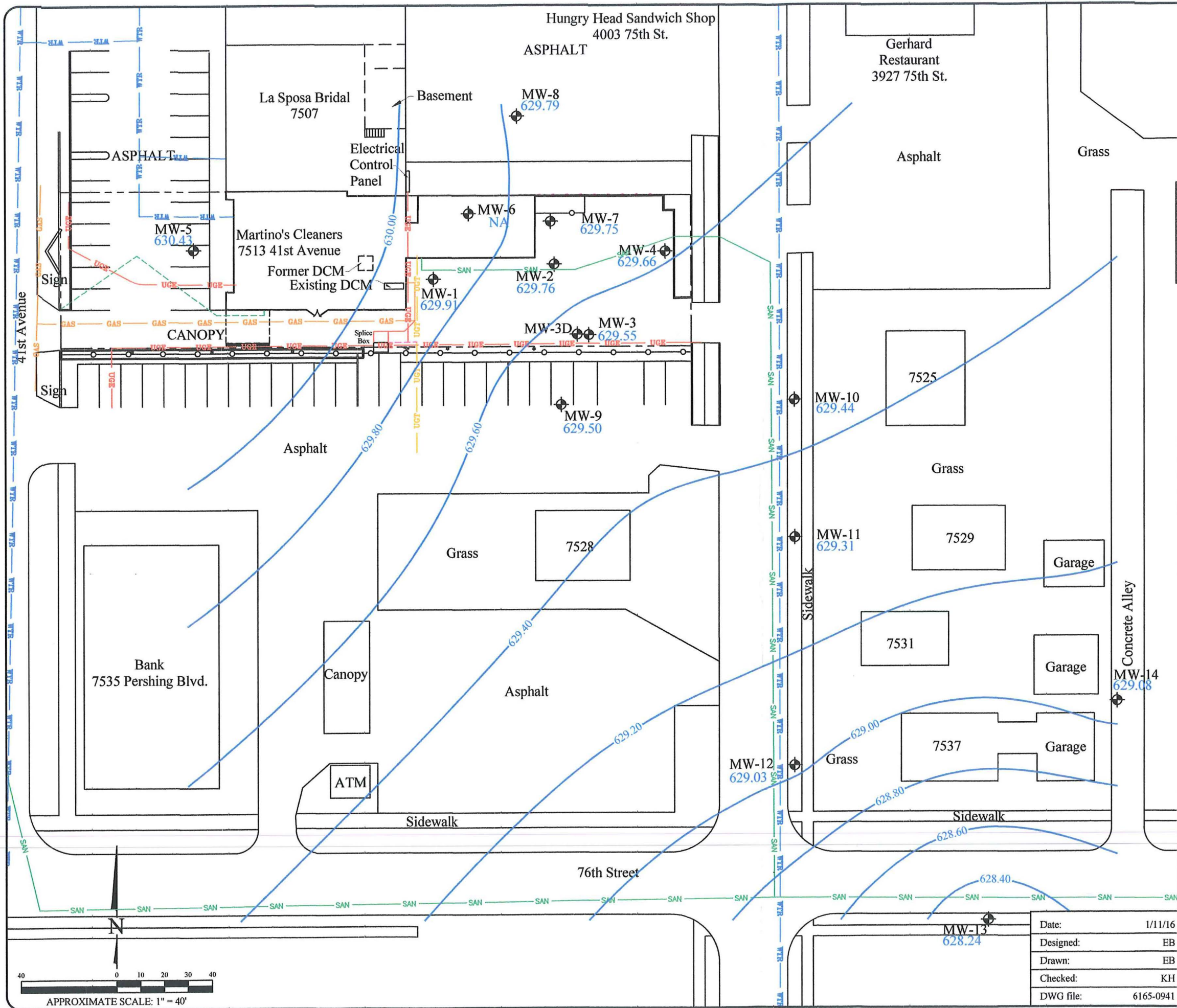
Martino's Cleaners
7513 41st Avenue
Kenosha, WI

Date:	3/30/15
Designed:	EB
Drawn:	EB
Checked:	KH
DWG file:	6165-0736

ENVIROforensics
 ENVIRONMENTAL FORENSIC INVESTIGATIONS, INC.
 602 N. Capitol Ave., Ste. 210 • Indianapolis, IN 46204
 EnviroForensics.com

Figure	2
Project	6165

APPROXIMATE SCALE: 1" = 40'



- ### Legend
- Property boundary
 - Fence line
 - GAS - Underground gas utility line
 - WTR - Underground water utility line
 - SAN - Underground sanitary utility line
 - - - - - Underground storm utility line
 - OVD - Over head electrical utility line
 - UGE - Underground electrical utility line
 - UGT - Underground cable television utility line
 - MW-5 - Monitoring well location
 - 629.2 - Groundwater elevation contour
 - 629.91 - Groundwater elevation (feet above mean sea level)
 - * - Value not used for contouring

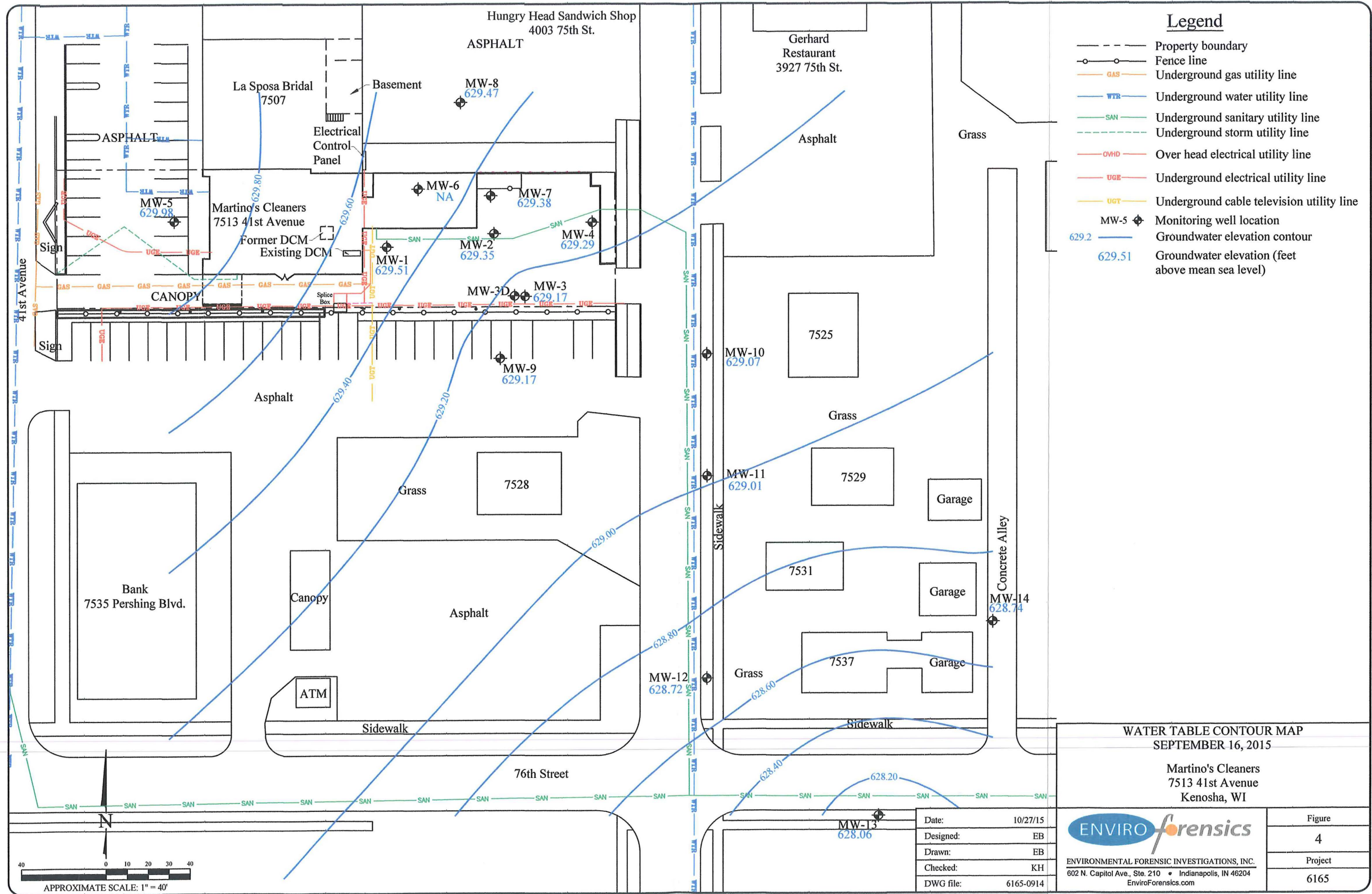
WATER TABLE CONTOUR MAP
JUNE 22, 2015

Martino's Cleaners
7513 41st Avenue
Kenosha, WI

Date:	1/11/16
Designed:	EB
Drawn:	EB
Checked:	KH
DWG file:	6165-0941

ENVIRONMENTAL FORENSIC INVESTIGATIONS, INC.
602 N. Capitol Ave., Ste. 210 • Indianapolis, IN 46204
EnviroForensics.com

Figure	3
Project	6165

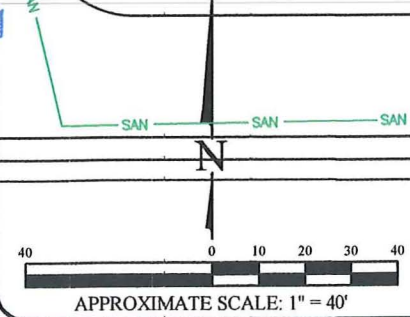


Legend

- Property boundary
- o-o- Fence line
- GAS- Underground gas utility line
- WTR- Underground water utility line
- SAN- Underground sanitary utility line
- - - - - Underground storm utility line
- OVHD- Over head electrical utility line
- UGE- Underground electrical utility line
- UGT- Underground cable television utility line
- MW-5 Monitoring well location
- 629.2 Groundwater elevation contour
- 629.51 Groundwater elevation (feet above mean sea level)

WATER TABLE CONTOUR MAP
SEPTEMBER 16, 2015

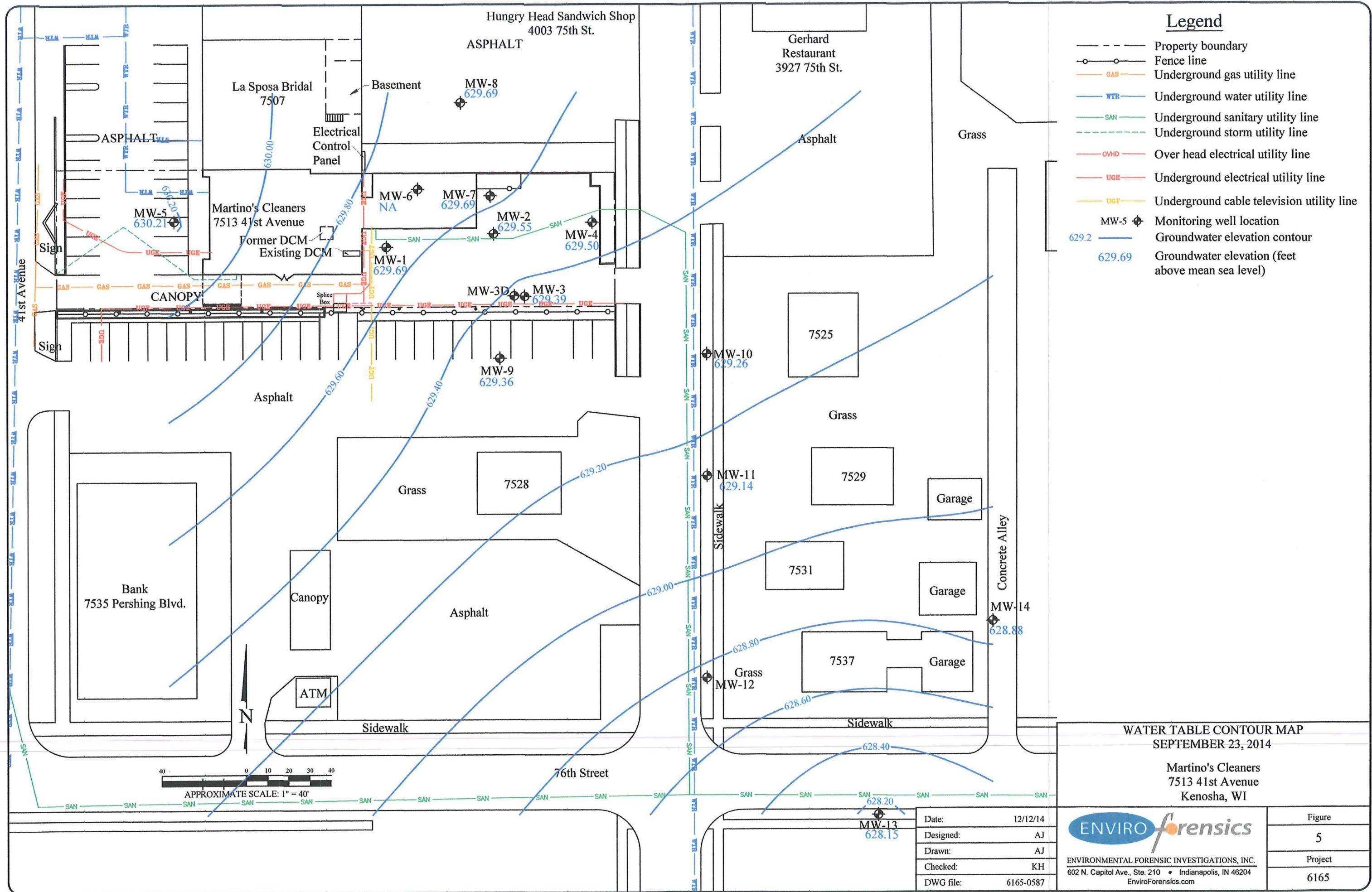
Martino's Cleaners
7513 41st Avenue
Kenosha, WI



Date:	10/27/15
Designed:	EB
Drawn:	EB
Checked:	KH
DWG file:	6165-0914

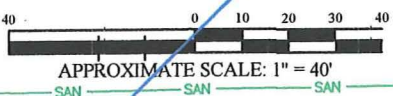
ENVIROforensics
ENVIRONMENTAL FORENSIC INVESTIGATIONS, INC.
602 N. Capitol Ave., Ste. 210 • Indianapolis, IN 46204
EnviroForensics.com

Figure	4
Project	6165



Legend

- Property boundary
- Fence line
- GAS - Underground gas utility line
- WTR - Underground water utility line
- SAN - Underground sanitary utility line
- - - - - Underground storm utility line
- OVHD - Over head electrical utility line
- UGE - Underground electrical utility line
- UCT - Underground cable television utility line
- MW-5 - Monitoring well location
- 629.2 - Groundwater elevation contour
- 629.69 - Groundwater elevation (feet above mean sea level)



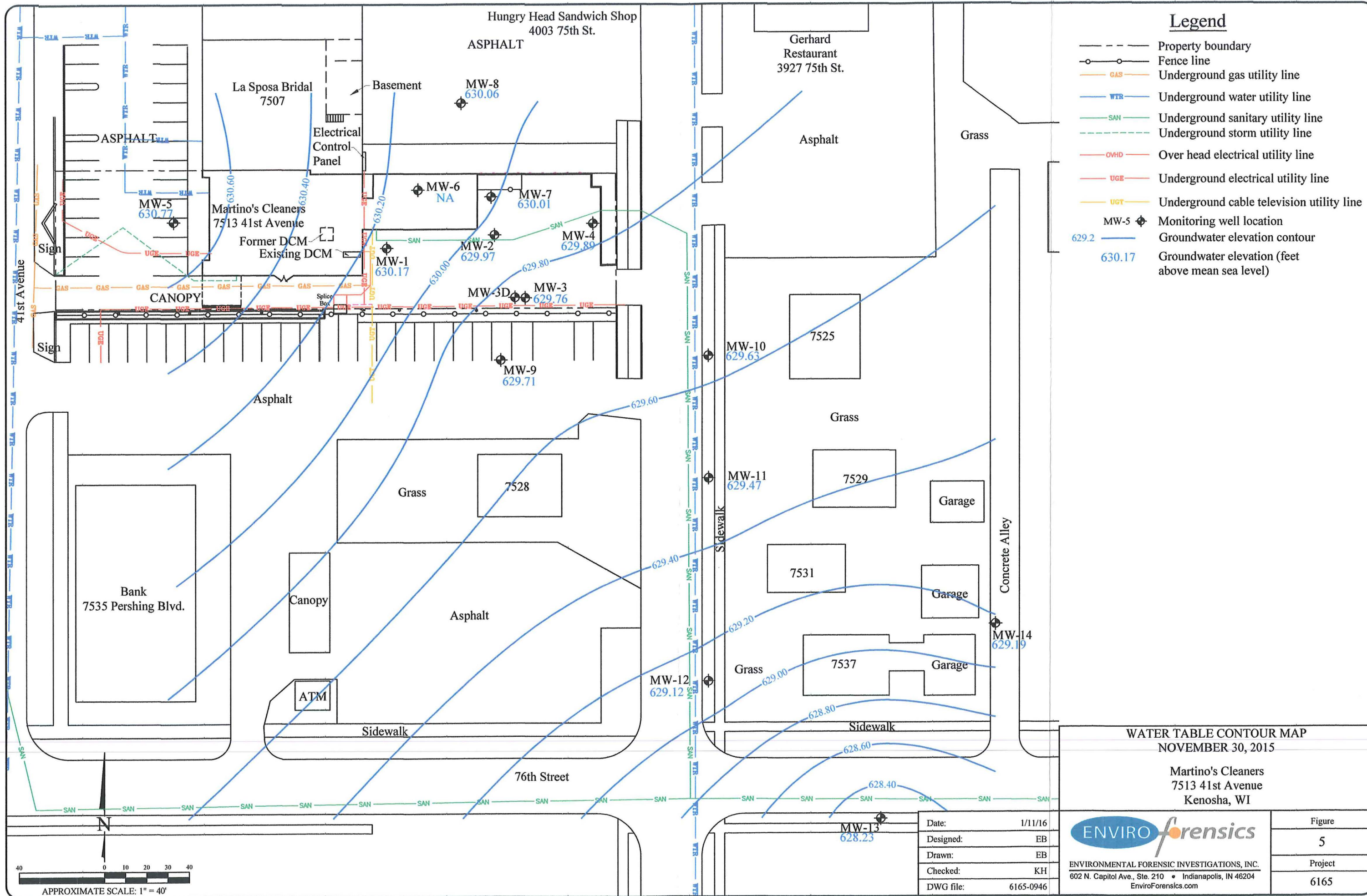
WATER TABLE CONTOUR MAP
SEPTEMBER 23, 2014

Martino's Cleaners
7513 41st Avenue
Kenosha, WI

Date:	12/12/14
Designed:	AJ
Drawn:	AJ
Checked:	KH
DWG file:	6165-0587

ENVIRONMENTAL FORENSIC INVESTIGATIONS, INC.
602 N. Capitol Ave., Ste. 210 • Indianapolis, IN 46204
EnviroForensics.com

Figure	5
Project	6165



Legend

- Property boundary
- Fence line
- GAS - Underground gas utility line
- WTR - Underground water utility line
- SAN - Underground sanitary utility line
- - - - - Underground storm utility line
- OVHD - Over head electrical utility line
- UGE - Underground electrical utility line
- UGT - Underground cable television utility line
- MW-5 - Monitoring well location
- 629.2 - Groundwater elevation contour
- 630.17 - Groundwater elevation (feet above mean sea level)

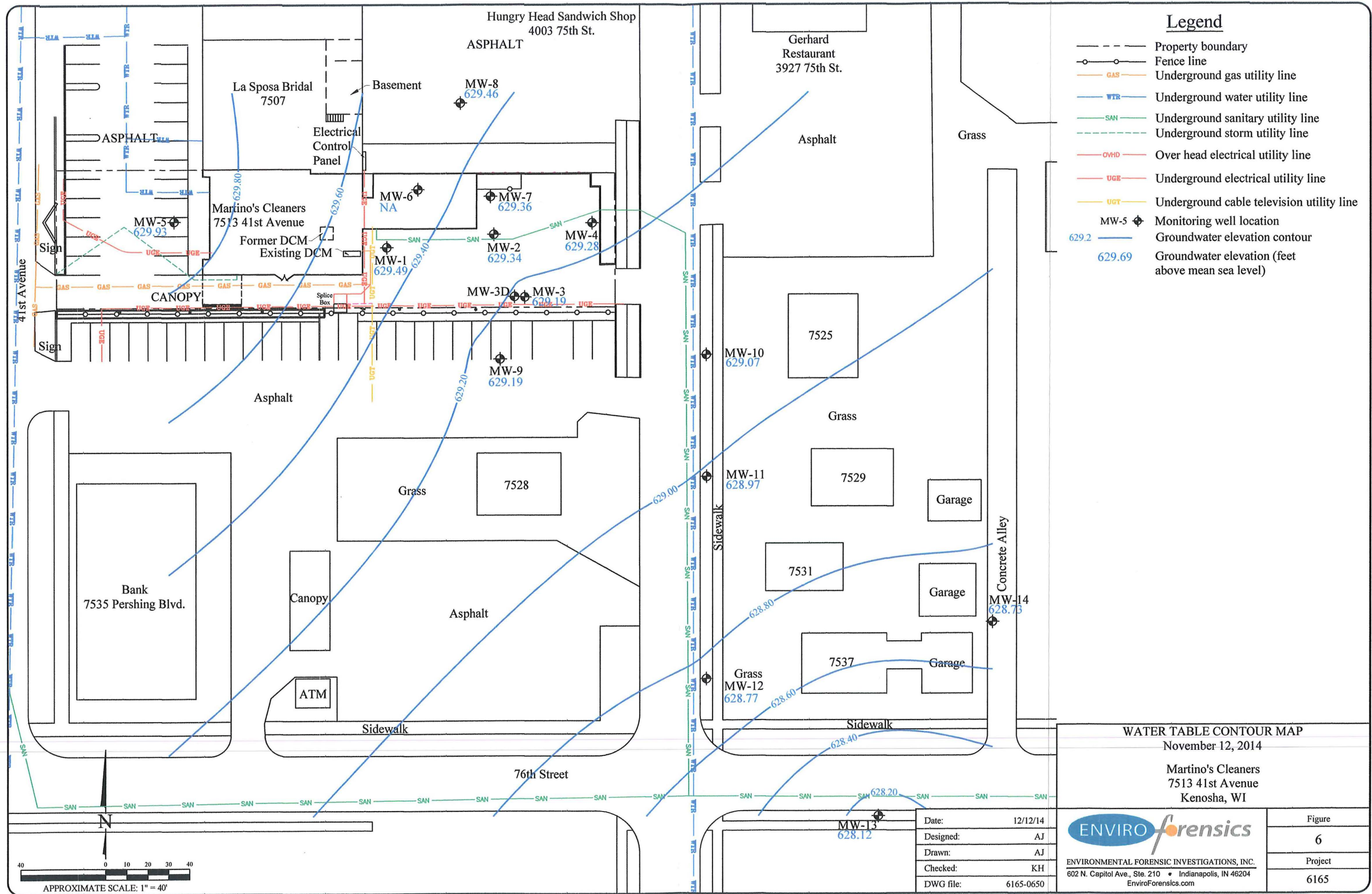
WATER TABLE CONTOUR MAP
NOVEMBER 30, 2015

Martino's Cleaners
7513 41st Avenue
Kenosha, WI

Date:	1/11/16
Designed:	EB
Drawn:	EB
Checked:	KH
DWG file:	6165-0946

ENVIROforensics
ENVIRONMENTAL FORENSIC INVESTIGATIONS, INC.
602 N. Capitol Ave., Ste. 210 • Indianapolis, IN 46204
EnviroForensics.com

Figure	5
Project	6165



Legend

- Property boundary
- Fence line
- GAS - Underground gas utility line
- WTR - Underground water utility line
- SAN - Underground sanitary utility line
- - - - - Underground storm utility line
- OVHD - Over head electrical utility line
- UGE - Underground electrical utility line
- UGT - Underground cable television utility line
- MW-5 - Monitoring well location
- 629.2 - Groundwater elevation contour
- 629.69 - Groundwater elevation (feet above mean sea level)

WATER TABLE CONTOUR MAP
November 12, 2014

Martino's Cleaners
7513 41st Avenue
Kenosha, WI

Date:	12/12/14
Designed:	AJ
Drawn:	AJ
Checked:	KH
DWG file:	6165-0650

ENVIROforensics
ENVIRONMENTAL FORENSIC INVESTIGATIONS, INC.
602 N. Capitol Ave., Ste. 210 • Indianapolis, IN 46204
EnviroForensics.com

Figure	6
Project	6165

